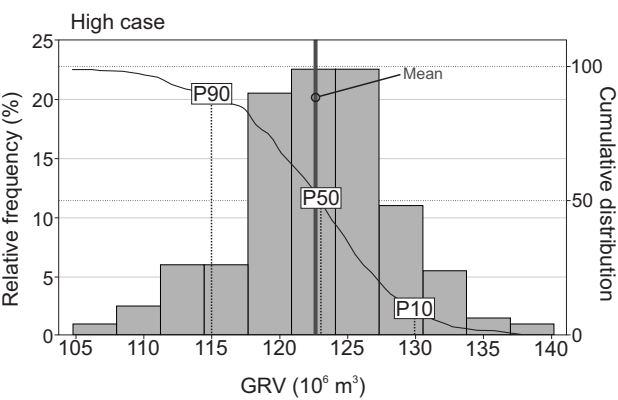
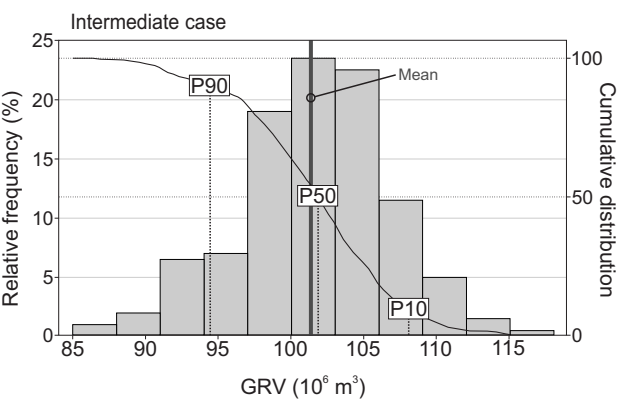
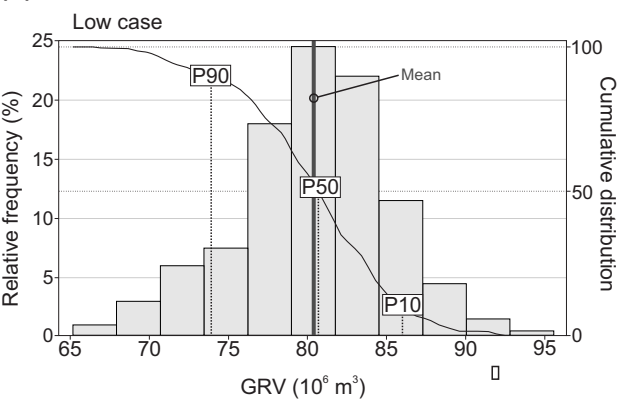


| | Low case GRV (10^6 m^3) | | Intermediate case GRV (10^6 m^3) | | | | High case GRV (10^6 m^3) | |
|------------|-------------------------------------|---------------------------|--|---------------------------|---------|-------------------------|--------------------------------------|--|
| | Base case model | 80.5 | Base case model | 101.6 | | Base case model | 122.6 | |
| | Manual uncertainty case | Constant uncertainty case | Manual uncertainty case | Constant uncertainty case | | Manual uncertainty case | Constant uncertainty case | |
| PREDICTION | 81.8 | 81.7 | 103.2 | P90 | 102.7 | 124.5 | 123.9 | |
| SIMULATION | P90 | P90 | P90 | P90 | P90 | P90 | P90 | |
| | 73.7 | 69.8 | 94.3 | 89.4 | 114.9 | 108.6 | | |
| | P50 | P50 | P50 | P50 | P50 | P50 | P50 | |
| | 80.8 | 77.5 | 102.1 | 98.6 | 123.1 | 119.4 | | |
| | P10 | P10 | P10 | P10 | P10 | P10 | P10 | |
| | 86.3 | 85.1 | 108.3 | 107.0 | 129.9 | 123.7 | | |
| | Minimum | Minimum | Minimum | Minimum | Minimum | Minimum | Minimum | |
| | 65.2 | 60.4 | 85.0 | 79.6 | 104.8 | 98.9 | | |
| Maximum | Maximum | Maximum | Maximum | Maximum | Maximum | Maximum | | |
| 95.6 | 93.8 | 118.1 | 115.8 | 140.2 | 138.0 | | | |
| Mean | Mean | Mean | Mean | Mean | Mean | Mean | | |
| 80.4 | 77.7 | 101.6 | 98.4 | 122.7 | 118.9 | | | |
| Median | Median | Median | Median | Median | Median | Median | | |
| 80.8 | 77.4 | 102.1 | 98.6 | 123.1 | 119.4 | | | |

(b) MANUAL UNCERTAINTY CASE



(c) CONSTANT UNCERTAINTY CASE

