

Supplement of Solid Earth, 10, 425–446, 2019
<https://doi.org/10.5194/se-10-425-2019-supplement>
© Author(s) 2019. This work is distributed under
the Creative Commons Attribution 4.0 License.



Supplement of

Linked thick- to thin-skinned inversion in the central Kirthar Fold Belt of Pakistan

Ralph Hinsch et al.

Correspondence to: Ralph Hinsch (ralph.hinsch@omv.com)

The copyright of individual parts of the supplement might differ from the CC BY 4.0 License.

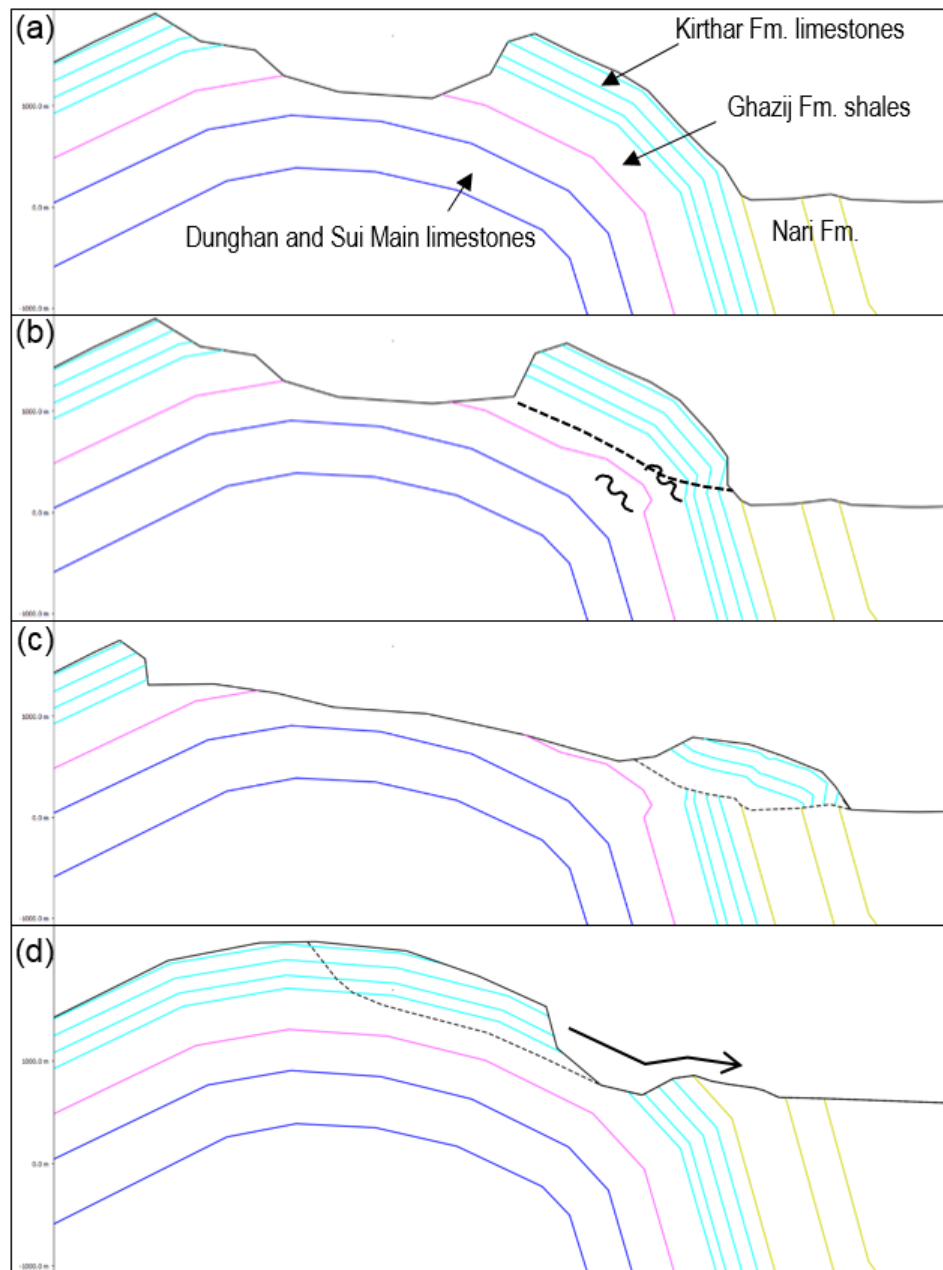


Figure S1: Schematic evolution showing land-slide interpretation of Fig. 6b. (a) Erosion affects roof of anticline. (b) Gravitational induced ductile deformation of soft shales leading to formation of “roof and wall” structure (knee), as suggested by Harrison and Falcon (1934, 1936) for several anticlines in Iran. (c) Anticipated present day situation after the structure has collapsed into a “slip sheet” (Harrison and Falcon 1934, 1936). (d) Alternative starting geometry with could lead to similar solution

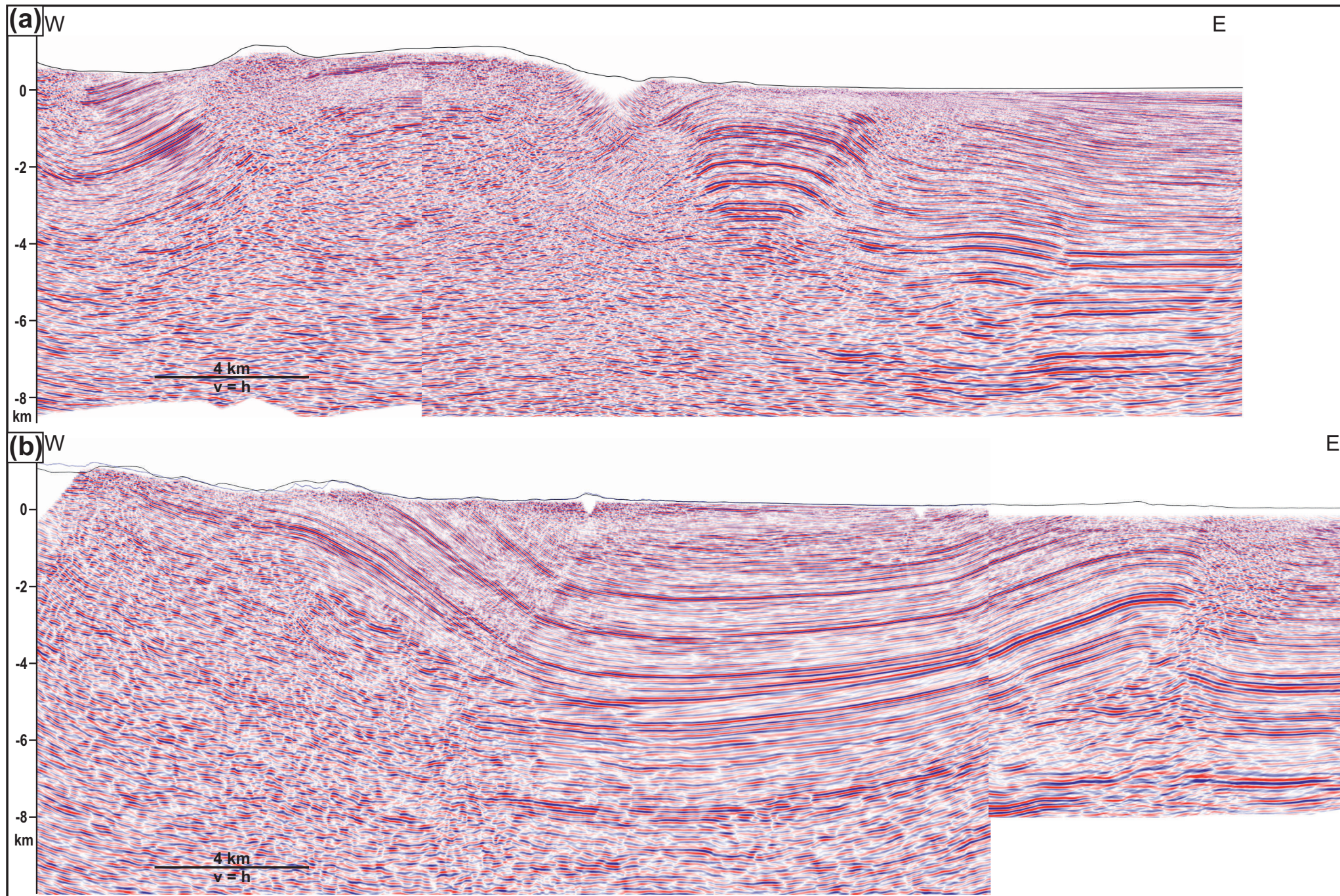


Figure S2: Uninterpreted Fig. 9

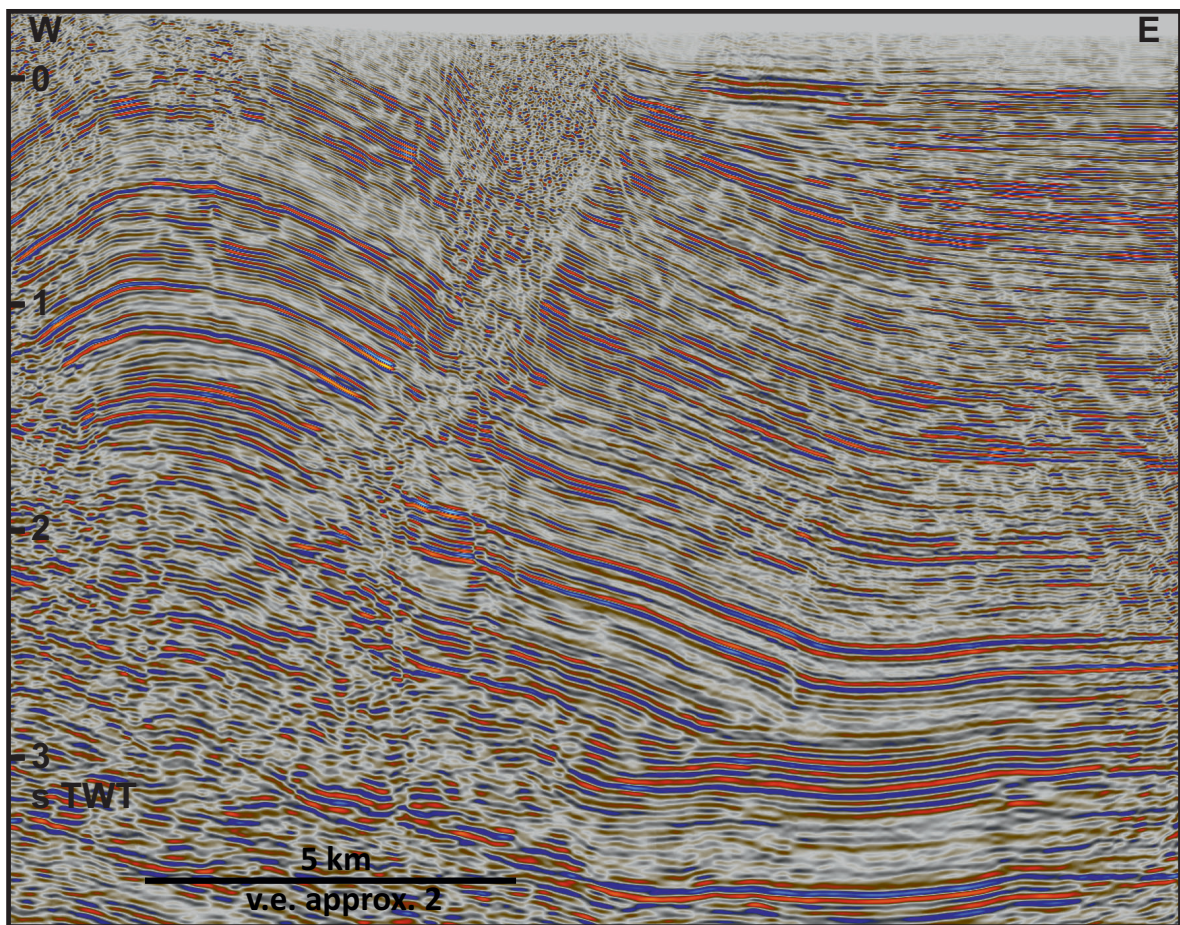


Figure S3: Uninterpreted Fig. 10a