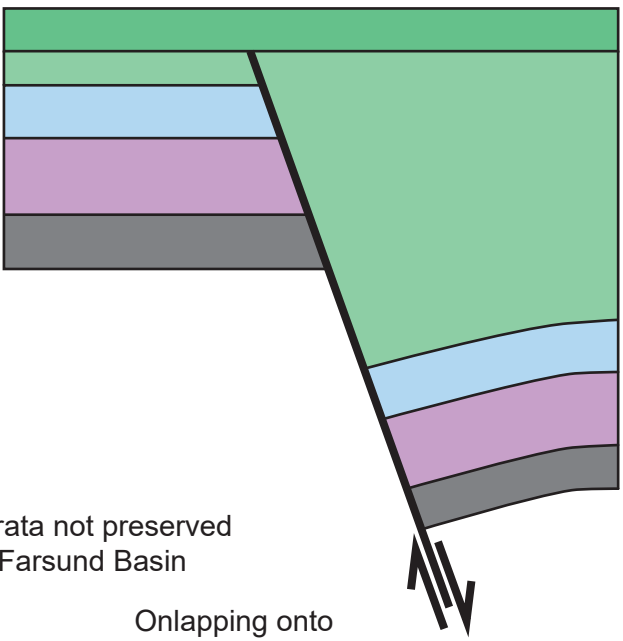


Normal faulting

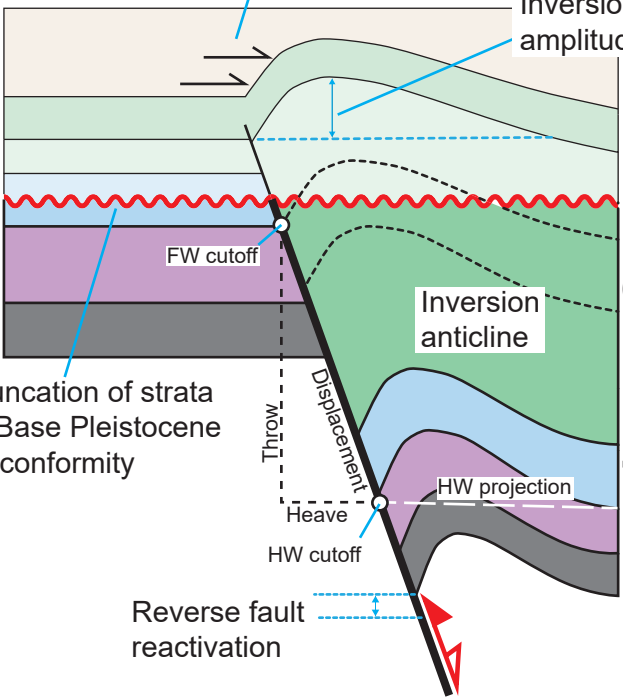


Strata not preserved in Farsund Basin

Onlapping onto inversion anticline

Inversion fold amplitude

Reverse reactivation and regional uplift



Truncation of strata at Base Pleistocene Unconformity

FW cutoff

Inversion anticline

HW projection

Throw

Displacement

Heave

HW cutoff

Reverse fault reactivation

