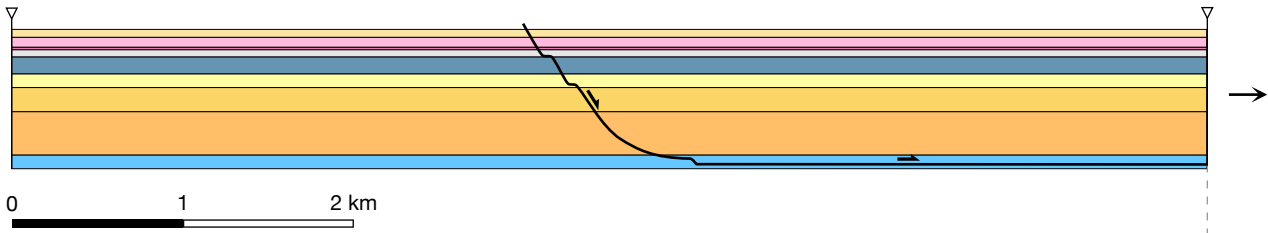
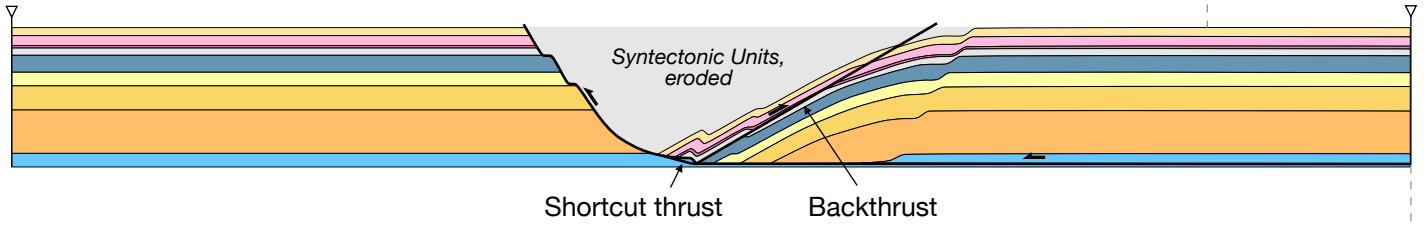


→ 035° NE

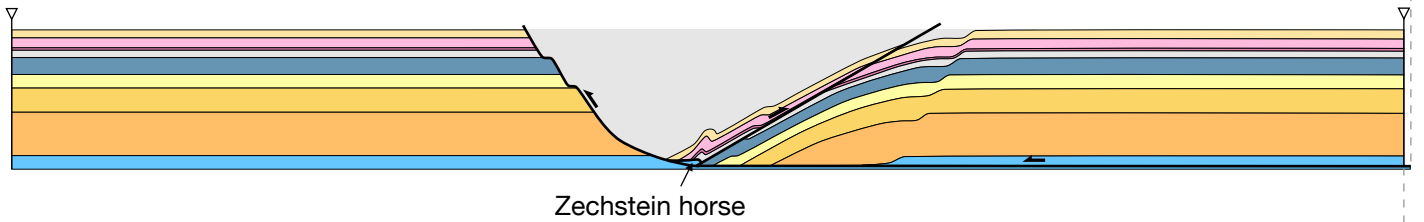
(a) Initial layer cake model at a constant thickness



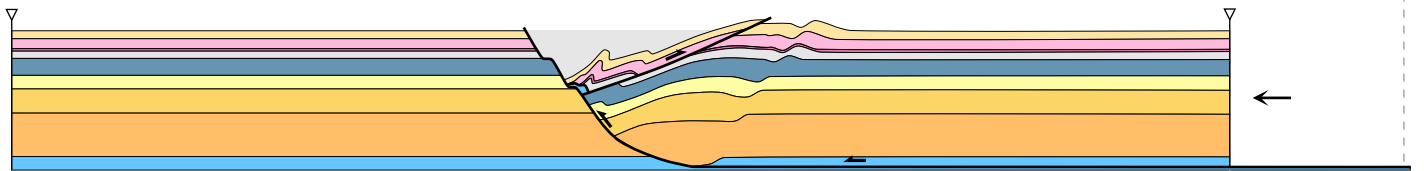
(b) Extensional phase and introduction of backthrust and shortcut thrust (E = 1.2 km, S = 0 km)



(c) Shortening phase with formation of Zechstein horse (E = 1.2 km, S = 0.05 km)



(d) Zechstein sliver is elevated to Upper Buntsandstein levels (E = 1.2 km, S = 1.1 km)



(e) Long-wavelength folding (E = 1.2 km, S = 1.2 km)

