



## ***Corrigendum to*** **“Orogenic lithosphere and slabs in the greater Alpine area – interpretations based on teleseismic P-wave tomography” published in Solid Earth, 12, 2633–2669, 2021**

**Mark R. Handy<sup>1</sup>, Stefan M. Schmid<sup>2</sup>, Marcel Paffrath<sup>3</sup>, Wolfgang Friederich<sup>3</sup>, and the AlpArray Working Group<sup>+</sup>**

<sup>1</sup>Institut für Geologische Wissenschaften, Freie Universität Berlin, Malteserstr. 74–100, 12249 Berlin, Germany

<sup>2</sup>Institut für Geophysik, ETH-Zürich, Sonneggstr. 5, 8092 Zurich, Switzerland

<sup>3</sup>Institut für Geologie, Mineralogie, Geophysik, Ruhr-Universität Bochum, 44780 Bochum, Germany

<sup>+</sup>For further information regarding the team, please visit the link which appears at the end of the paper.

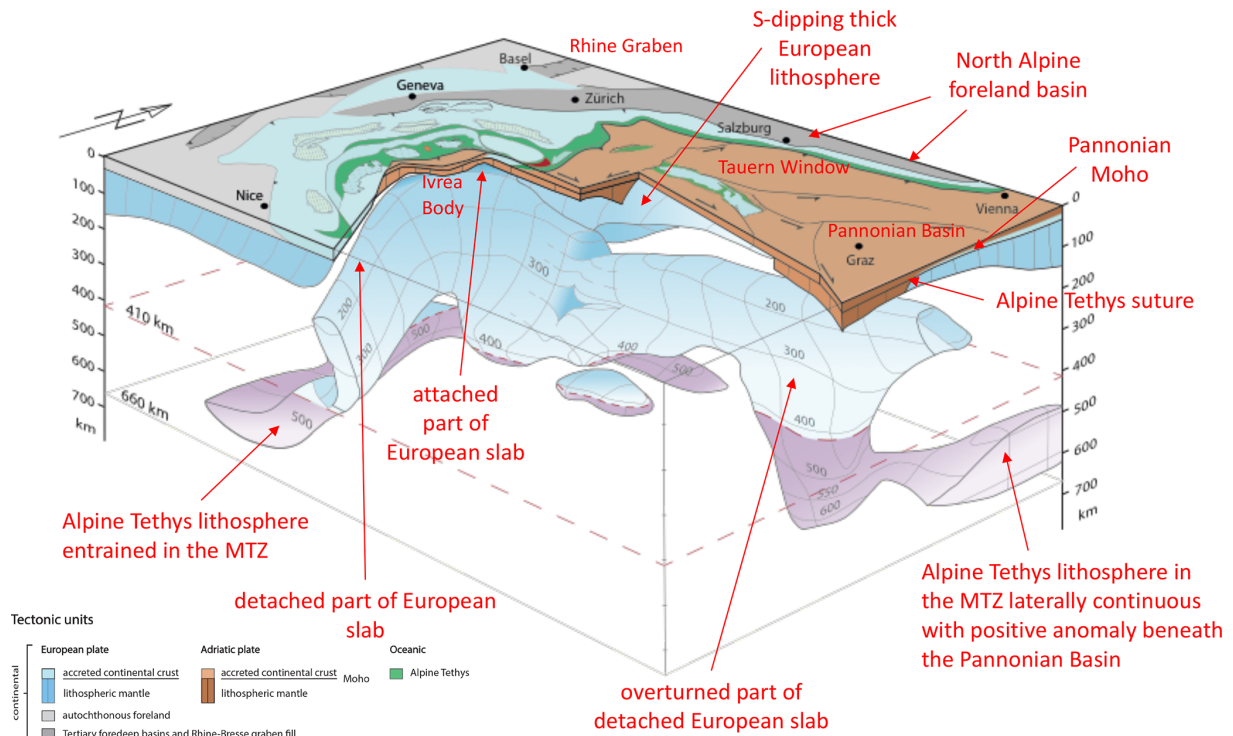
**Correspondence:** Mark R. Handy (mark.handy@fu-berlin.de)

Published: 14 January 2022

In Fig. 11, we mistakenly used a legend taken from another figure in the same paper. The corrected figure now includes the following minor changes to the legend and map:

- distinction in the legend between crust and lithospheric mantle, as well as the Moho
- dark green represents Alpine Tethyan oceanic crust (no Neotethyan crust)
- light blue in the Tauern Window represents accreted European crust.

Please find here the correct figure.



**Figure 11.** Three-dimensional diagram of the slab beneath the Alps as viewed from the southeast. Slab geometry based on projections of all vertical tomographic profiles in Appendix B and horizontal sections from the model of Paffrath et al. (2021b). Tectonic map of the surface is simplified from maps of Schmid et al. (2004) and Schmid et al. (2008).