

Reference zircon age populations (source-area fingerprint)

Source B

Accretionary complex (GTMZ):
UA, LA, MA

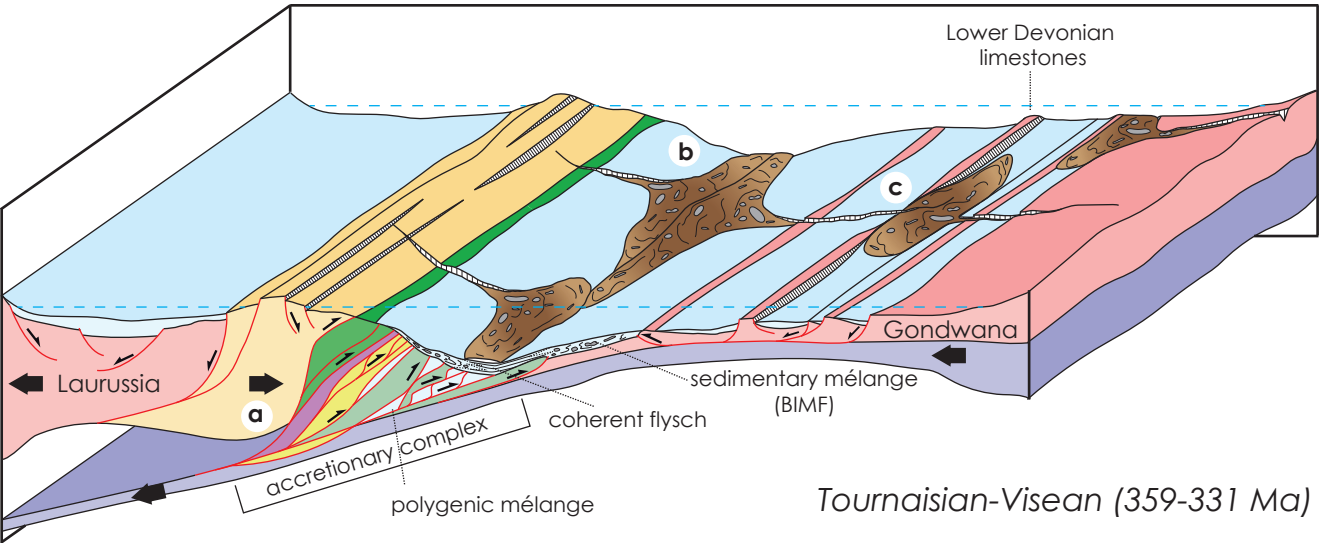
Source A

N-Gondwana passive margin
(UPa, CIZ, WALZ, CZ, OMZ)

Variscan zircon proximal sources (YZ, MDA)

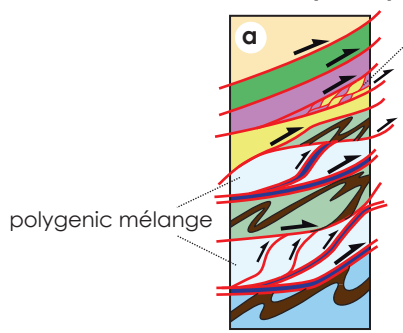
GTMZ
HP/HT Metamorphic zircons
390-355 Ma

Autochthon (CIZ, WALZ, CZ)
Metamorphic and magmatic zircons
340-325 Ma

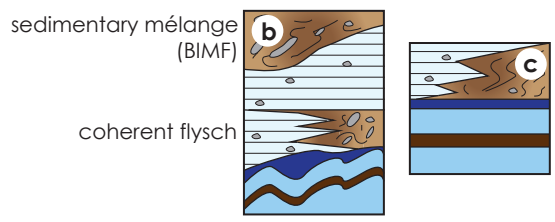


Tournaisian-Visean (359-331 Ma)

accretionary complex



**Foreland basins
Gondwana margin**



- Accretionary complex (GTMZ)**
- Upper Allochthon (UA) (IP/HP-HT)
 - Middle Allochthon (MA)
 - Lower Allochthon (LA)
 - Upper Parautochthon (UPa) (early Cambrian-Silurian)
 - Armorican Quartzite (UPa)
 - Lower Parautochthon (Synorogenic flysch)

- Olistoliths
- Olistostromes/Mass wasting (BIMF)
- Synorogenic flysch
- Silurian carbonaceous-siliceous slates (SCSS)
- Armorican Quartzite
- Cambrian-Ordovician

- Faults and kinematics
- Tectonic plate motion
- Sea level
- Continental basement
- Lithospheric mantle