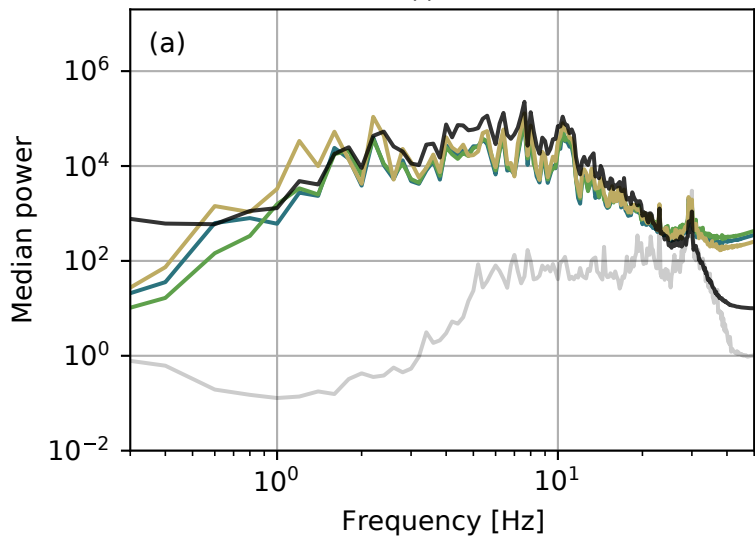
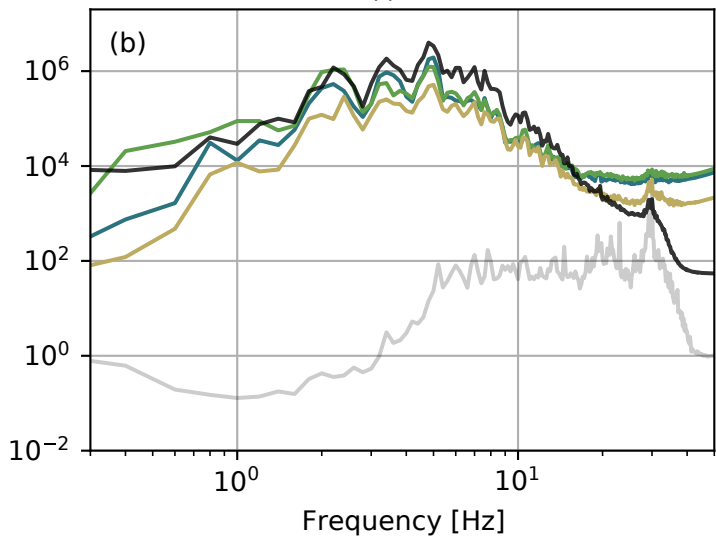


— Nodal (N) — Nodal (E) — Nodal (Z) — DAS

P wave ($v_{app} = 0.2$ km/s)

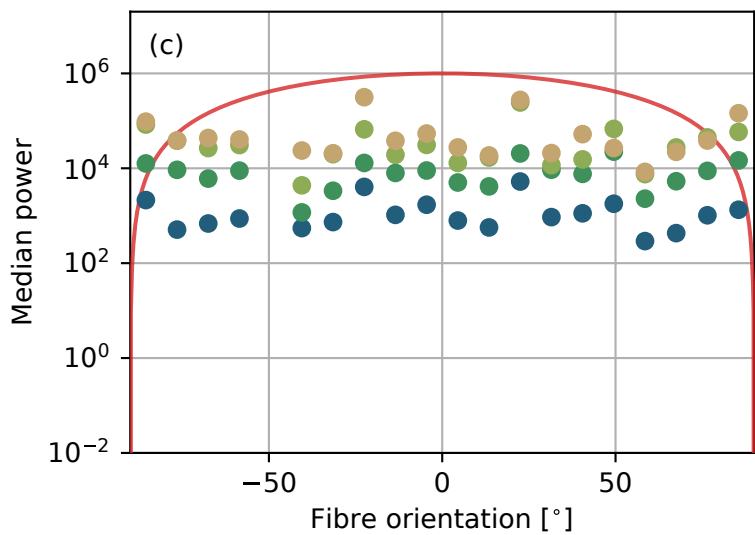


S wave ($v_{app} = 0.2$ km/s)



— $\cos^2\theta$ model ● 0.5-1.0 Hz ● 2.0-3.0 Hz
 — $\sin 2\theta$ model ● 1.0-2.0 Hz ● 3.0-5.0 Hz

P wave



S wave

