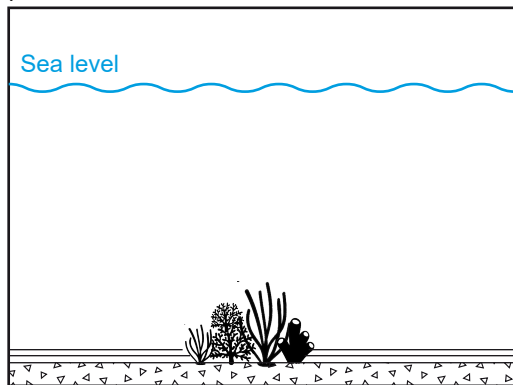
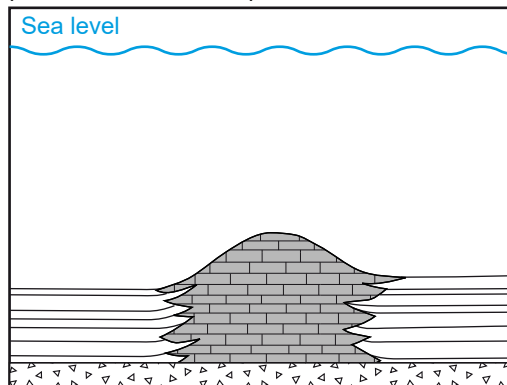


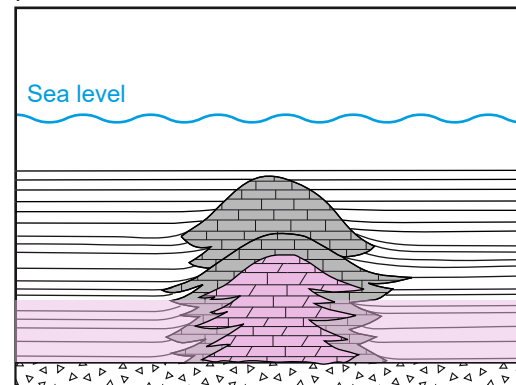
phase 1a - sedimentation



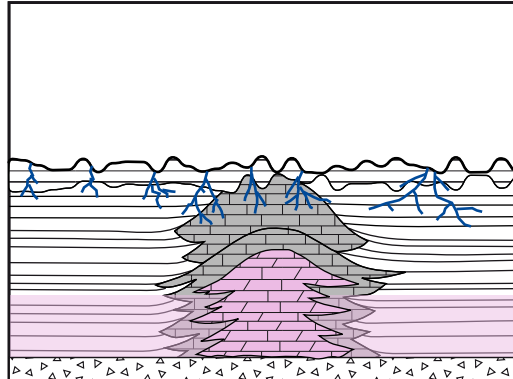
phase 1b - reef development



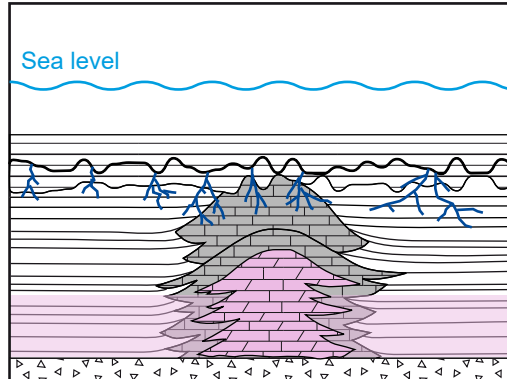
phases 2 & 3 - 1<sup>st</sup> / 2<sup>nd</sup> dolomitization



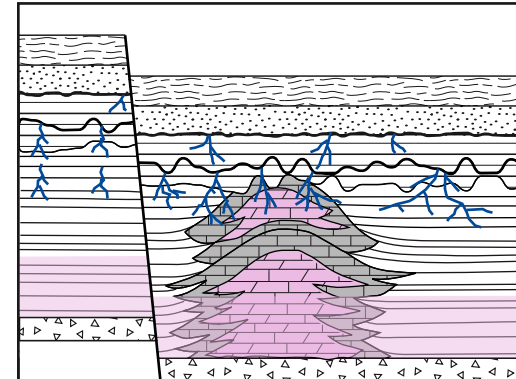
phase 4 - subaerial exposure / 1<sup>st</sup> karstification



phases 5 / 6 - faulting / 3<sup>rd</sup> dolomitization



phases 5 / 6 - faulting / 3<sup>rd</sup> dolomitization



phase 7 - 2<sup>nd</sup> karstification

