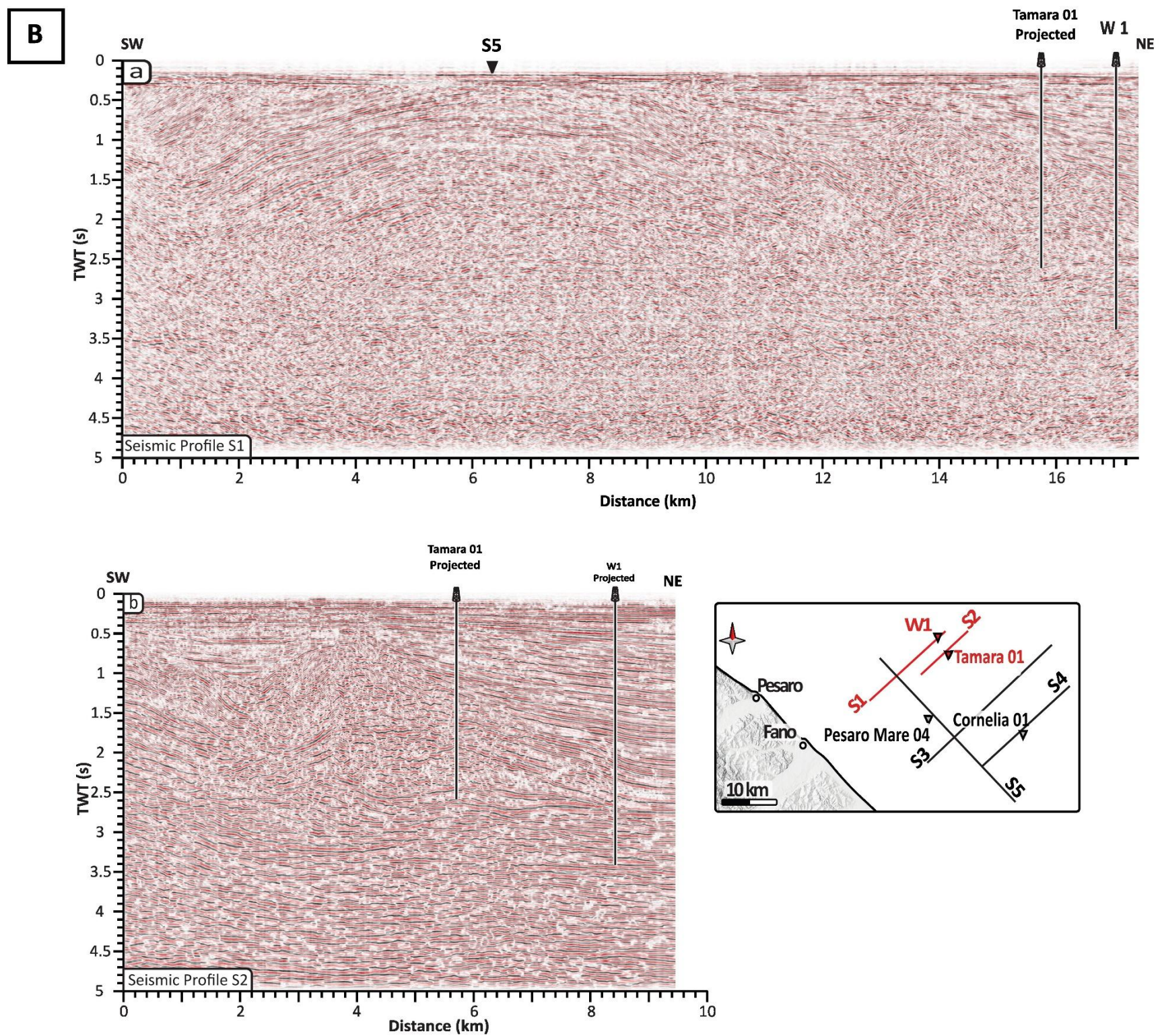


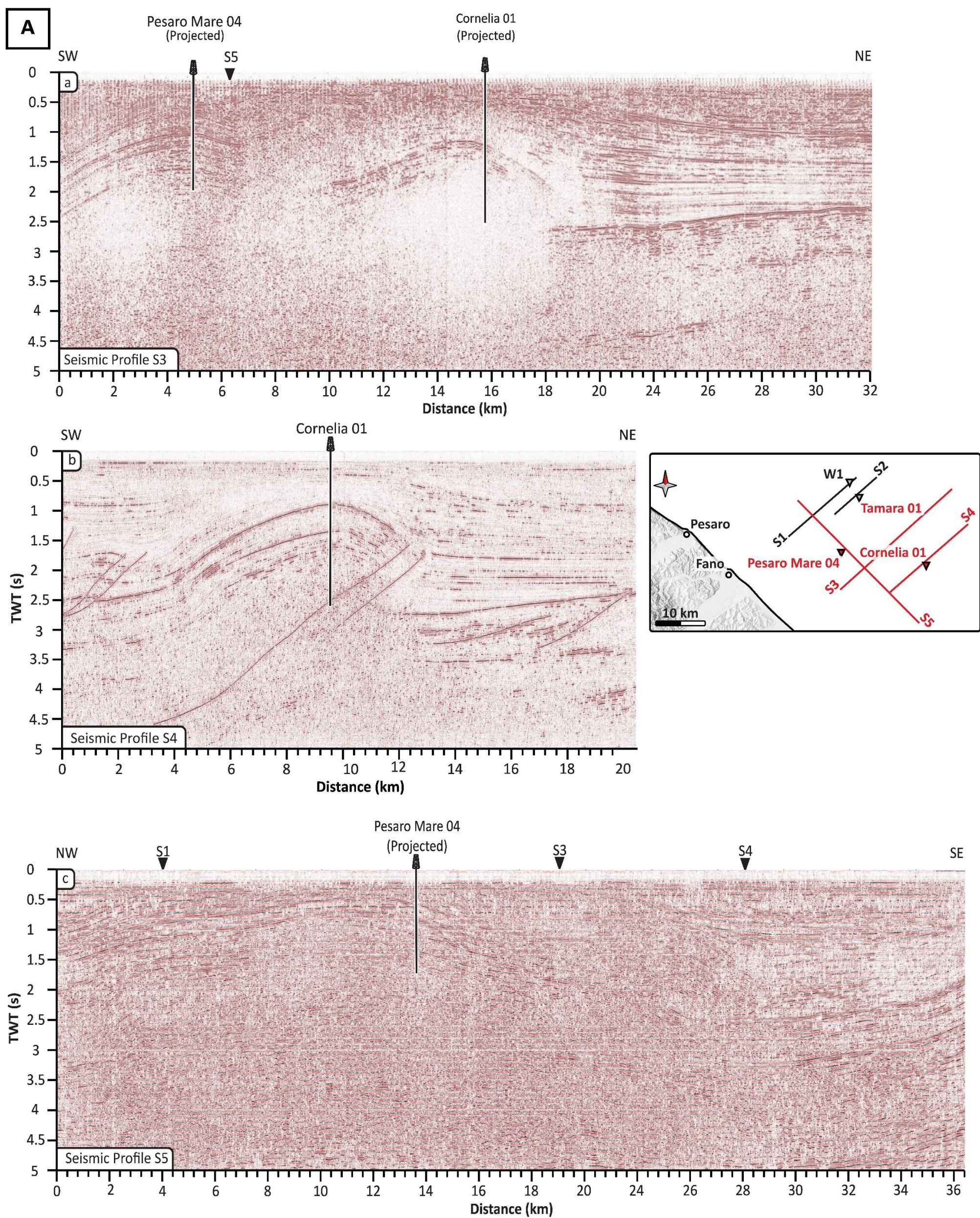
**Fig. S1:** A) Raw seismic sections converted from raster to SEG-Y using Wiggly2SEGy (Sopher, 2018). a) Section S1. b) Section S2





**Fig. S1 (continued):** B) seismic sections (1 and 2) after the application of Automatic Gain Control (AGC; 1000 ms), a bandpass filter, and dip-steering techniques to enhance amplitude balance, suppress random noise, and improve structural continuity (e.g., Barchi et al., 2021; Ercoli et al., 2023; Carboni et al., 2024).





**Fig. S2:** A) Raw seismic sections converted from raster to SEG-Y using Wiggle2SEGy (Sopher, 2018). a) Section S3. b) Section S4. c) Section S5.



