

Supplement of Solid Earth, 6, 1277–1293, 2015
<http://www.solid-earth.net/6/1277/2015/>
doi:10.5194/se-6-1277-2015-supplement
© Author(s) 2015. CC Attribution 3.0 License.



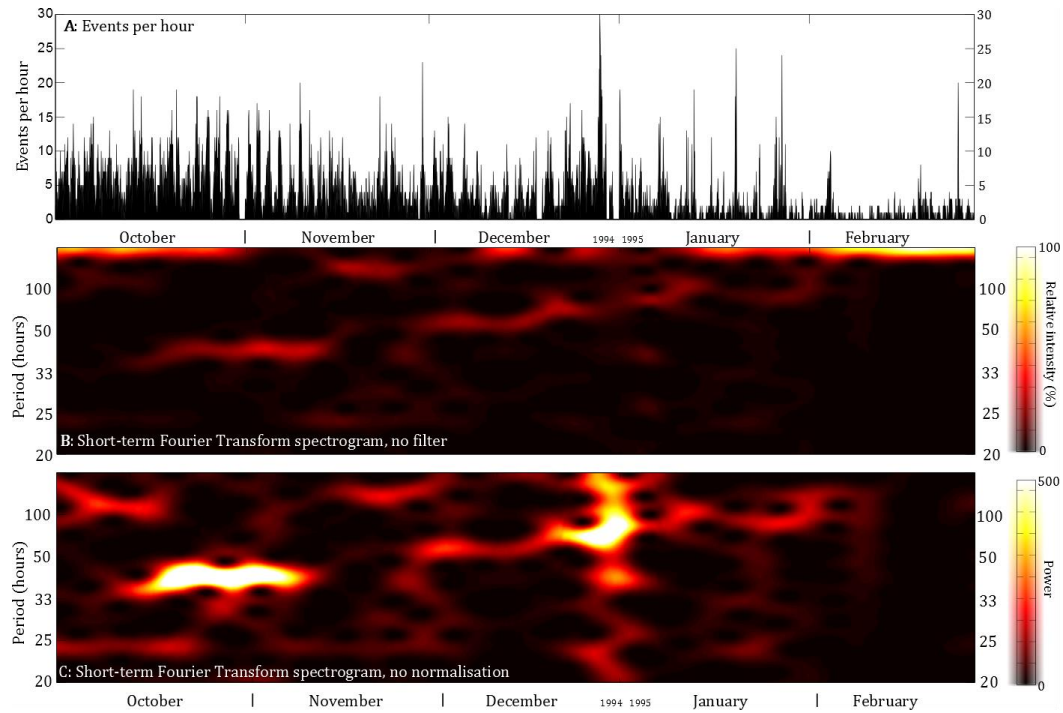
Supplement of

Repetitive fracturing during spine extrusion at Unzen volcano, Japan

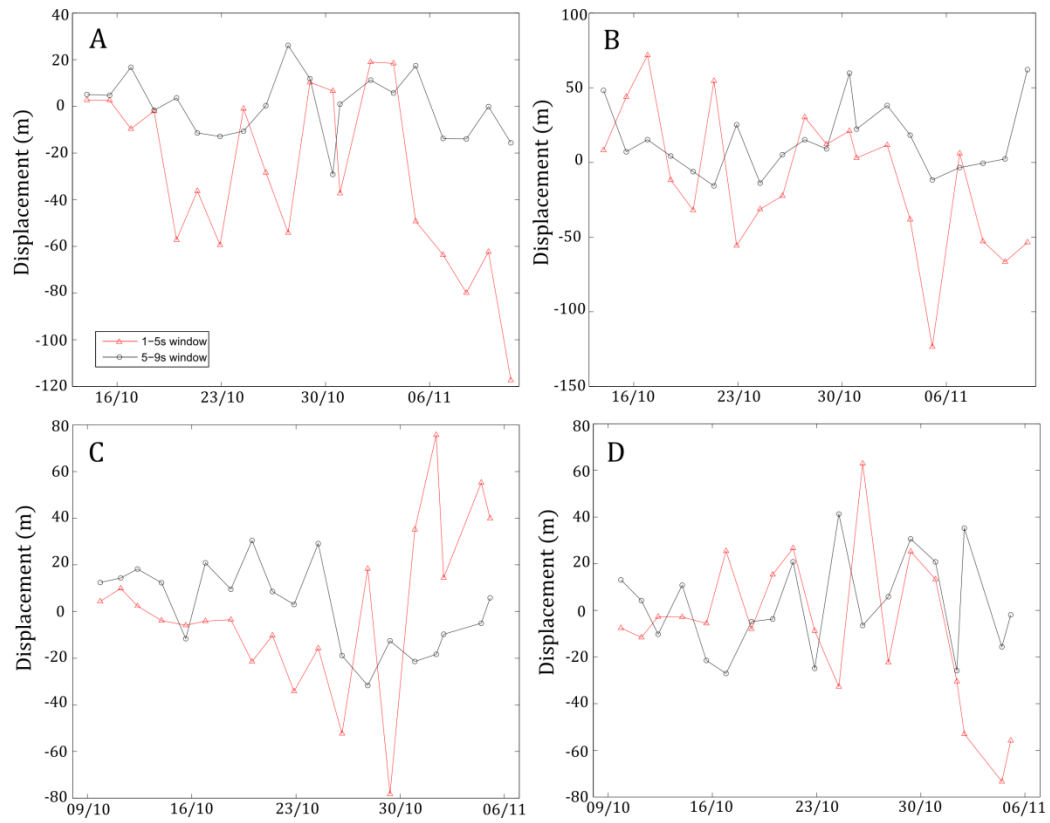
O. D. Lamb et al.

Correspondence to: O. D. Lamb (o.lamb@liv.ac.uk)

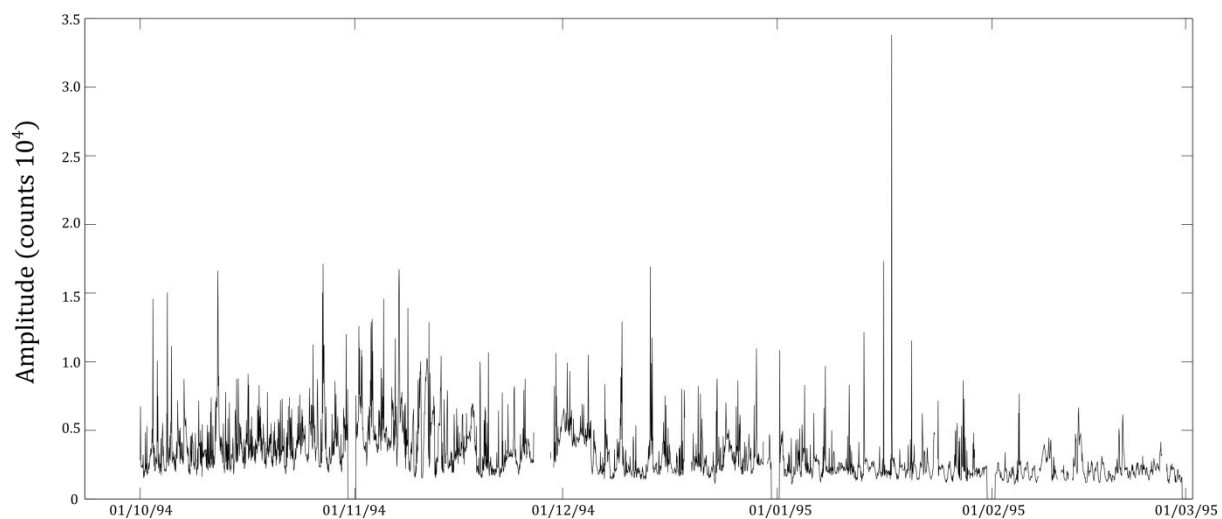
The copyright of individual parts of the supplement might differ from the CC-BY 3.0 licence.



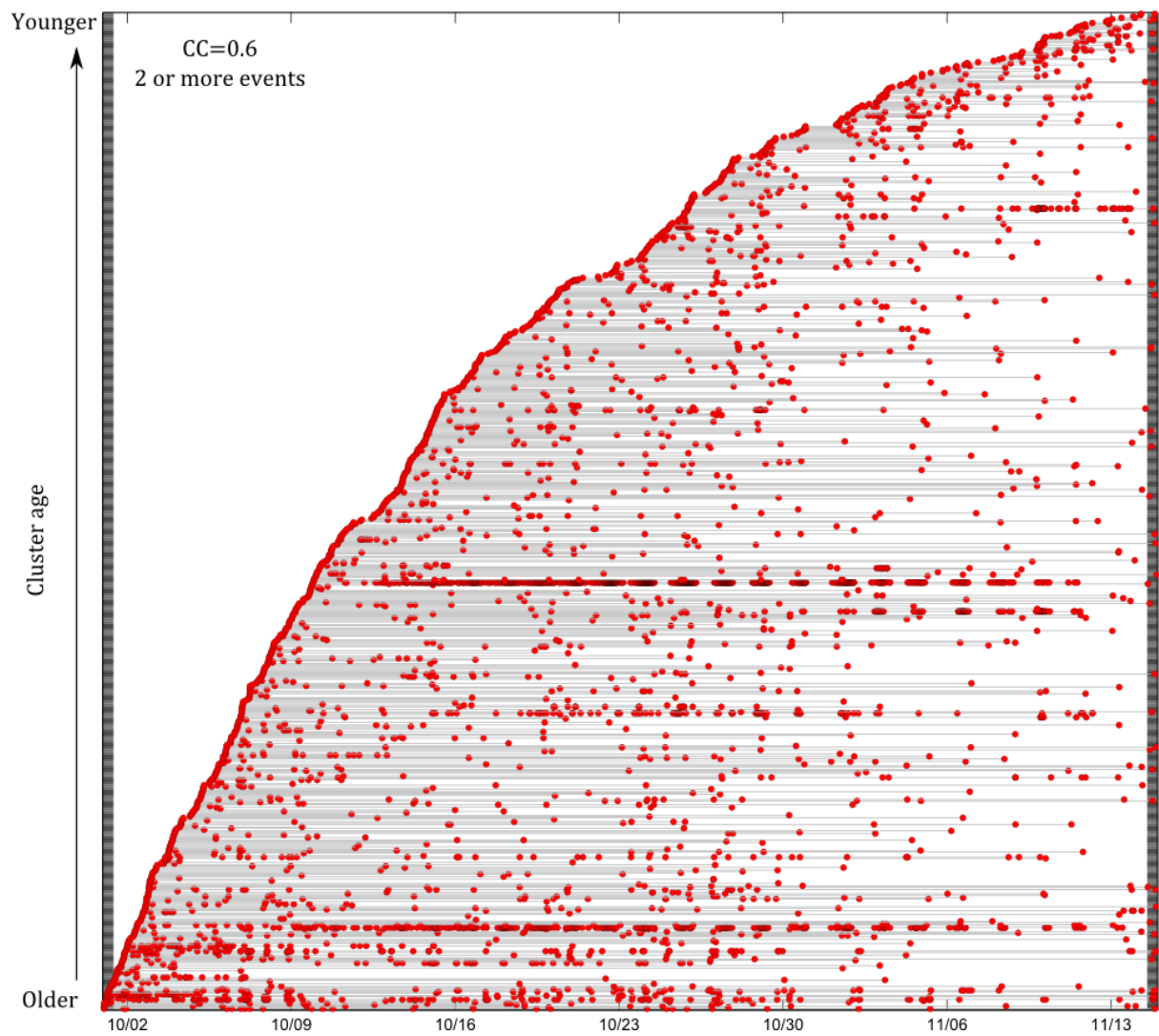
Supplementary Figure 1: (A) The hourly event record of events detected from continuous data recorded at station FG1 at Unzen from 1st October 1994 to 28th February 1995. (B) The STFT spectrogram for the hourly event count time-series plotted in (A), without any Butterworth filter applied to the time-series. (C) The STFT spectrogram of the hourly event count time-series plotted in (A), without any normalisation applied to each window.



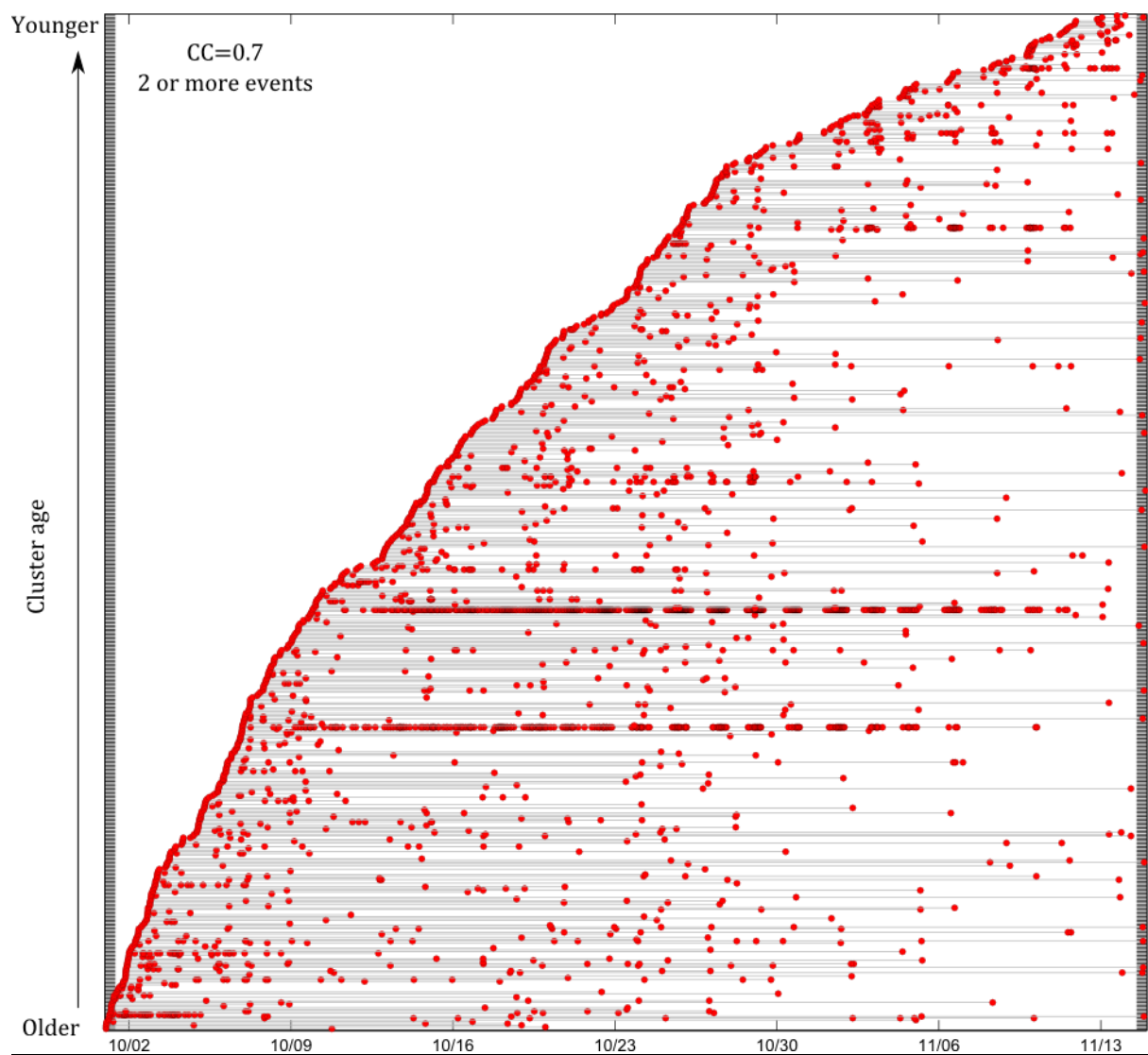
Supplementary Figure 2: Source displacements between the first stack and all other stacks for data bandpassed between 1-5 Hz (A and C) and 5-10 Hz (B and D) for cluster 1 (A and B) and cluster 2 (C and D).



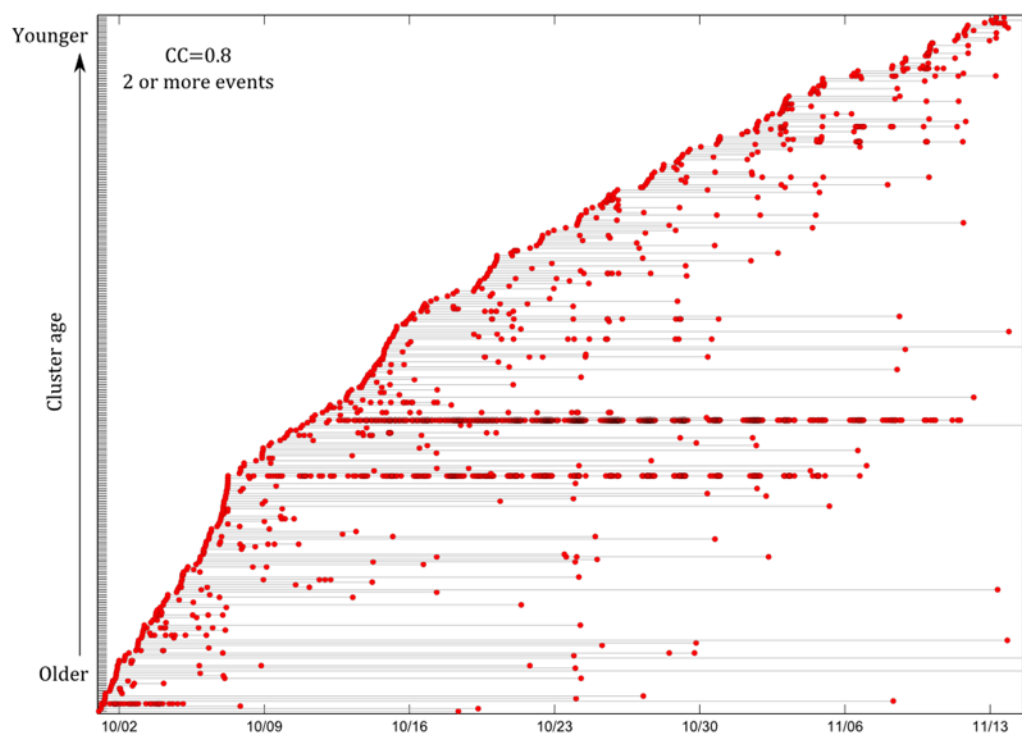
Supplementary Figure 3: 10-minute averaged Real-time Seismic Amplitude Measurements of the continuous data from station FG1.



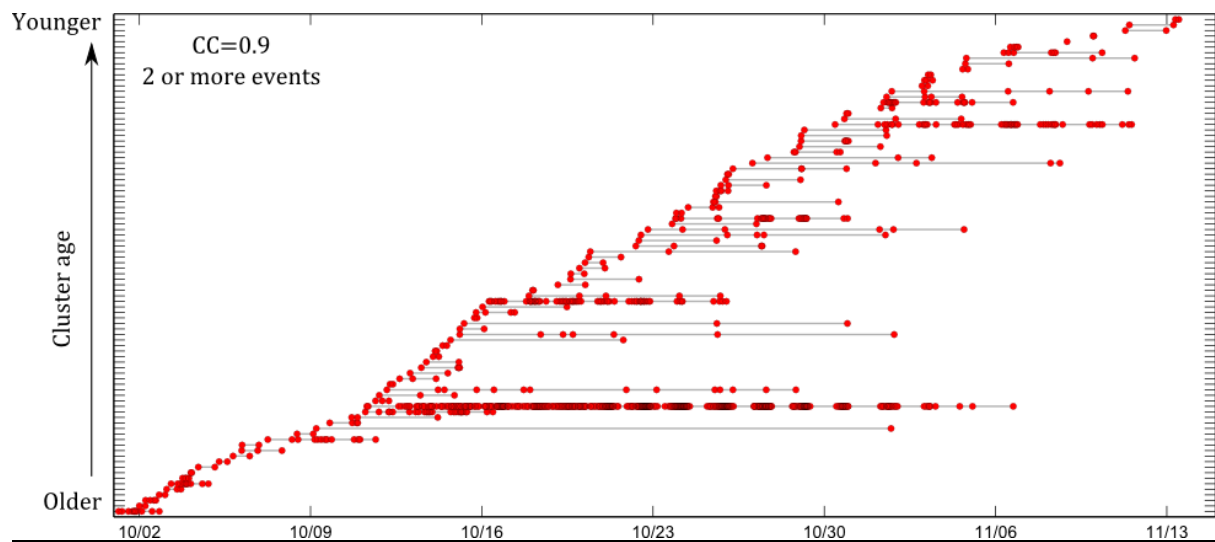
Supplementary Figure 4: Cluster lifespan plot for CC threshold of 0.6 and 2 or more events. Each line connects events within a single cluster. Clusters are plotted by age in ascending order.



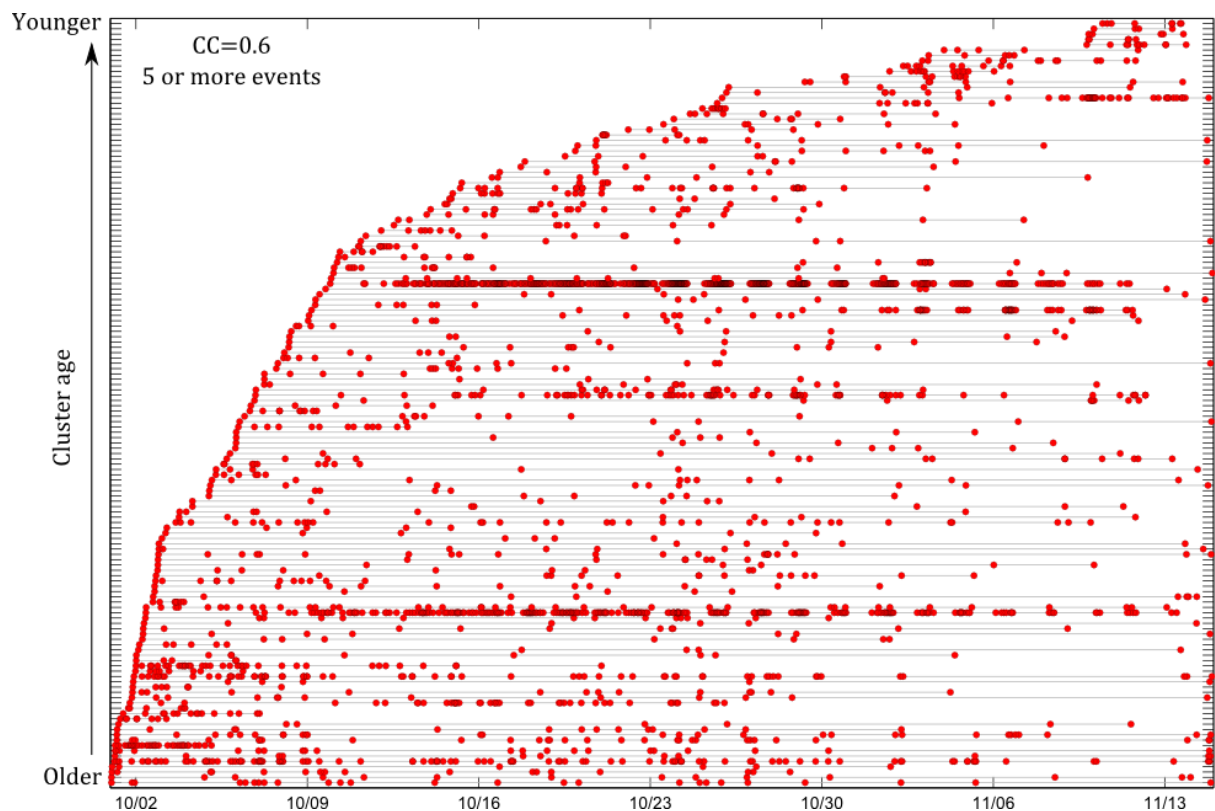
Supplementary Figure 5: Cluster lifespan plot for CC threshold of 0.7 and 2 or more events. Each line connects events within a single cluster. Clusters are plotted by age in ascending order.



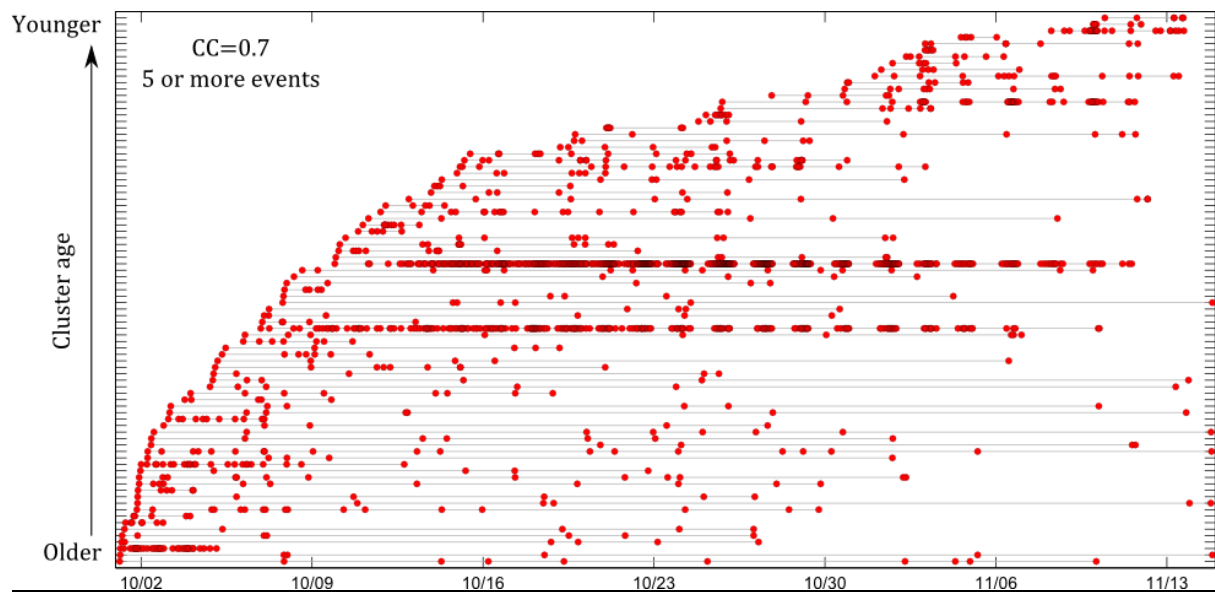
Supplementary Figure 6: Cluster lifespan plot for CC threshold of 0.8 and 2 or more events. Each line connects events within a single cluster. Clusters are plotted by age in ascending order.



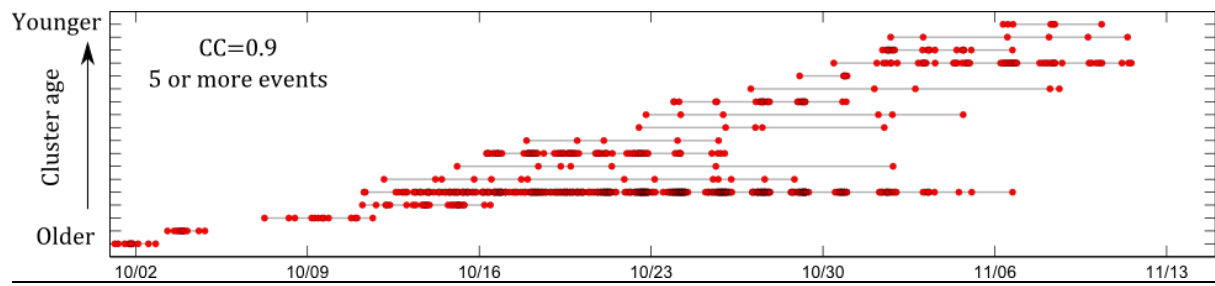
Supplementary Figure 7: Cluster lifespan plot for CC threshold of 0.9 and 2 or more events. Each line connects events within a single cluster. Clusters are plotted by age in ascending order.



Supplementary Figure 8: Cluster lifespan plot for CC threshold of 0.6 and 5 or more events. Each line connects events within a single cluster. Clusters are plotted by age in ascending order.



Supplementary Figure 9: Cluster lifespan plot for CC threshold of 0.7 and 5 or more events. Each line connects events within a single cluster. Clusters are plotted by age in ascending order.



Supplementary Figure 10: Cluster lifespan plot for CC threshold of 0.9 and 5 or more events. Each line connects events within a single cluster. Clusters are plotted by age in ascending order.