

## ***Interactive comment on “Reflection seismic studies over the end-glacial Burträsk fault, Skellefteå, Sweden” by C. Juhlin and B. Lund***

**C. Juhlin and B. Lund**

christopher.juhlin@geo.uu.se

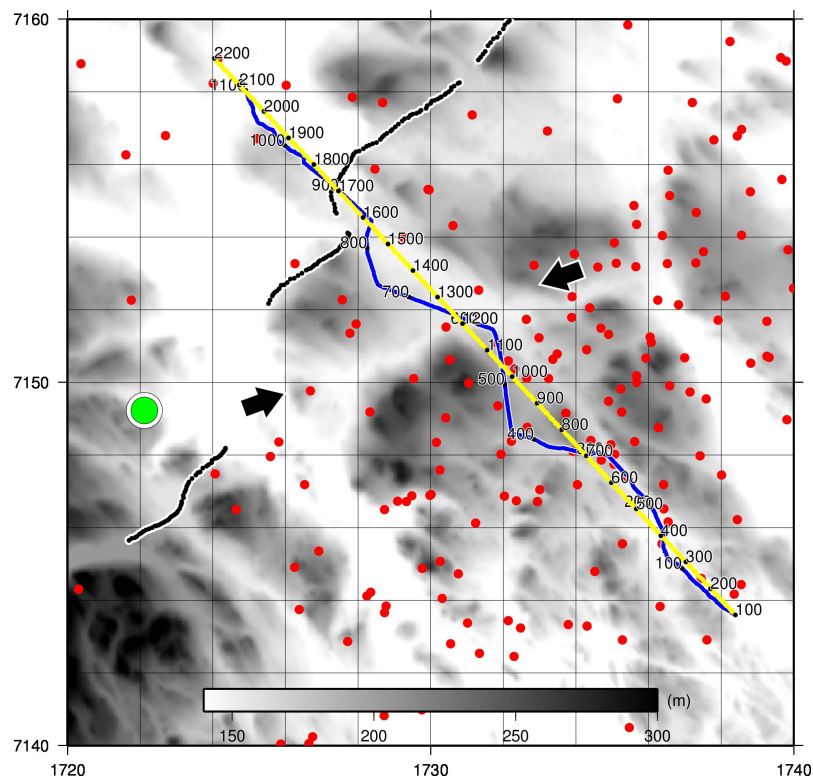
Received and published: 10 December 2010

The Nisca (1995) reference has now been incorporated.

Figure 6 has been revised to make it more clear where the nickel deposit is located.

Interactive comment on Solid Earth Discuss., 2, 307, 2010.

C146



**Fig. 1.** Figure 6

C147