



Interactive
Comment

Interactive comment on “Reflection seismic studies over the end-glacial Burträsk fault, Skellefteå, Sweden” by C. Juhlin and B. Lund

C. Juhlin and B. Lund

christopher.juhlin@geo.uu.se

Received and published: 10 December 2010

The Nisca (1995) reference has now been incorporated.

Figure 6 has been revised to make it more clear where the nickel deposit is located.

Interactive comment on Solid Earth Discuss., 2, 307, 2010.

Full Screen / Esc

Printer-friendly Version

Interactive Discussion

Discussion Paper



Interactive
Comment

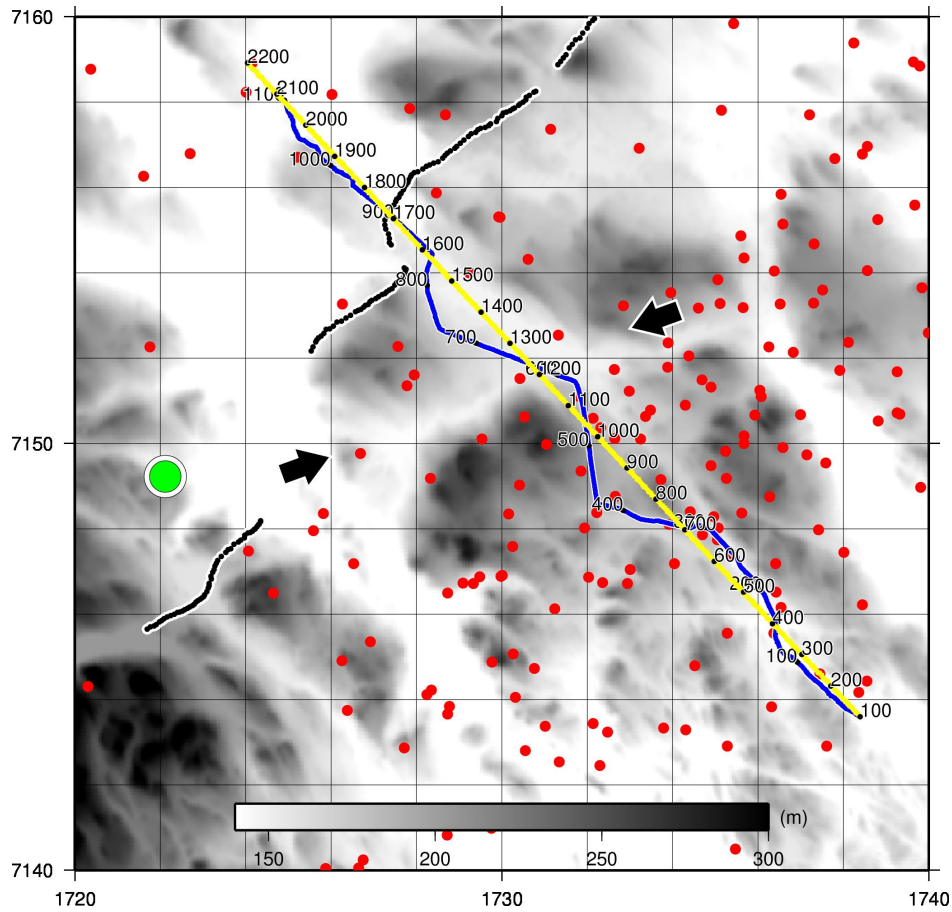


Fig. 1. Figure 6

Full Screen / Esc

Printer-friendly Version

Interactive Discussion

Discussion Paper

