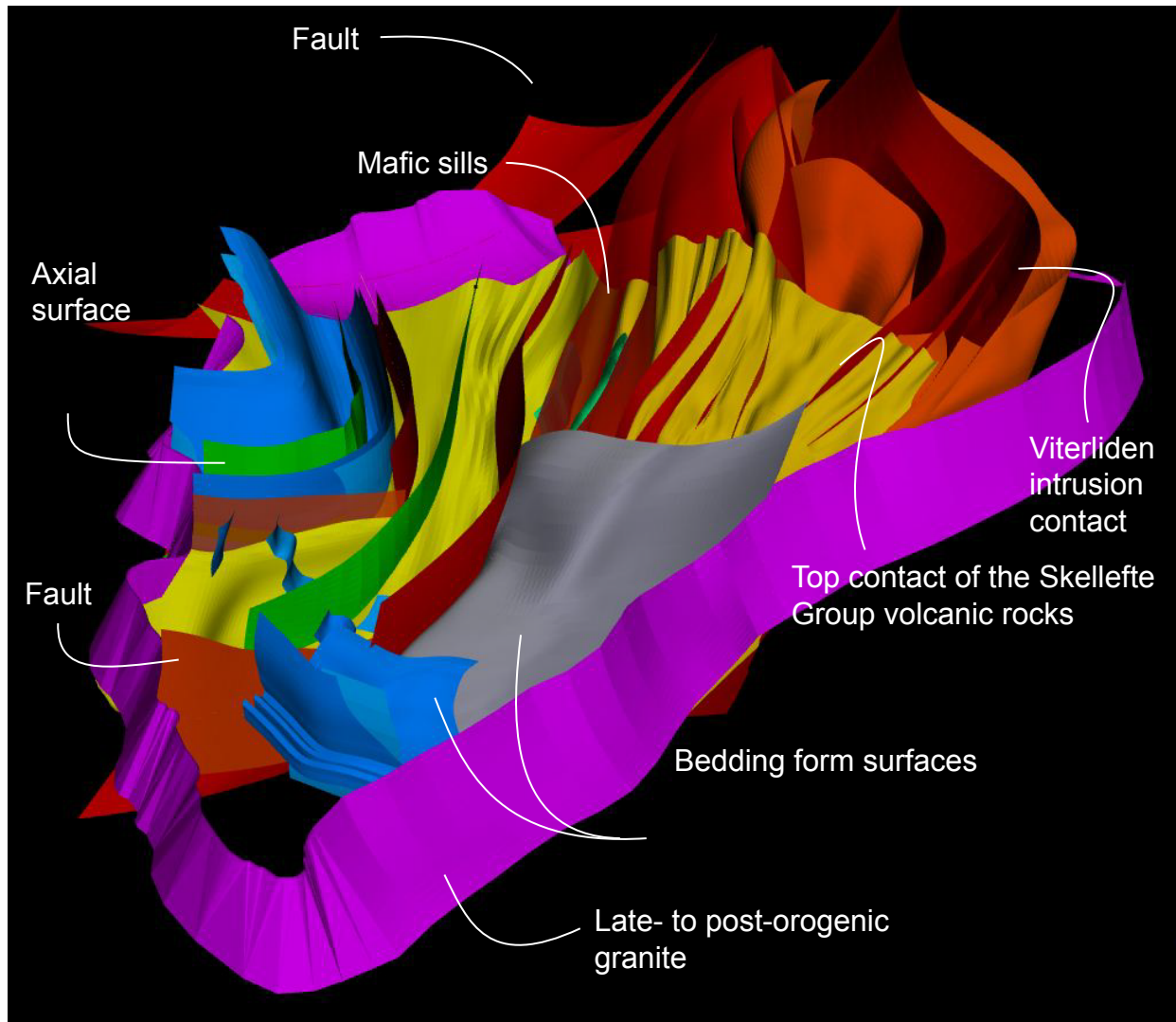


3-D-PDF model of the Kristineberg area



The figure shows the geological features included in the 3-D model which may be found on the next page of this document. Brief instructions to navigate through the model are found below.

Instructions

Use the "Model Tree" to toggle on and off the desired geological features. The Model Tree may be found by clicking the right mouse button when the cursor is located on the model. By right-clicking you may also use the navigation controls (spin, zoom etc), change between predefined views, change the model rendering mode (solid, wireframe etc) and lightning conditions. Default settings for the mouse buttons are (keep pressed down and move the mouse for effects): Left: Rotate; Right: Zoom; Both: Pan.

The model comprises two "Slices" which may be toggled on and off separately to get a cross-sectional view through the model. The other components include ore deposits, lination arrows and geological map draped on the topographic surface. The "Slices", lination arrows and the ores are found under "Groups" and the geological map under "Surfaces" in the model tree.

