

This discussion paper is/has been under review for the journal Solid Earth (SE).
Please refer to the corresponding final paper in SE if available.

3-D reflection seismic imaging of the Hontomín structure in the Basque-Cantabrian Basin (Spain)

J. Alcalde^{1,2}, D. Martí¹, C. Juhlin³, A. Malehmir³, D. Sopher³, E. Saura¹,
I. Marzán¹, P. Ayarza⁴, A. Calahorrano⁵, A. Pérez-Estaún^{1,2}, and R. Carbonell¹

¹Institute of Earth Sciences Jaume Almera CSIC, Barcelona, Spain

²CIUDEN Foundation, Ponferrada, Spain

³Department of Earth sciences, Uppsala University, Uppsala, Sweden

⁴University of Salamanca, Geology Department, Salamanca, Spain

⁵Barcelona Center for Subsurface Imaging, Barcelona, Spain

Received: 26 August 2013 – Accepted: 29 August 2013 – Published: 13 September 2013

Correspondence to: J. Alcalde (juan.alcalde.martin@gmail.com)

Published by Copernicus Publications on behalf of the European Geosciences Union.

3-D reflection seismic imaging of the Hontomín structure

J. Alcalde et al.

Title Page

Abstract

Introduction

Conclusions

References

Tables

Figures

◀

▶

◀

▶

Back

Close

Full Screen / Esc

Printer-friendly Version

Interactive Discussion



Abstract

The Basque-Cantabrian Basin of the Northern Iberia peninsula constitutes a unique example of a major deformation system, featuring a dome structure developed by extensional tectonics followed by compressional reactivation. The occurrence of natural resources in the area and the possibility of establishing a geological storage site for carbon dioxide motivated the acquisition of a 3-D seismic reflection survey in 2010, centered on the Jurassic Hontomín dome. The objectives of this survey were to obtain a geological model of the overall structure and to establish a baseline model for a possible geological CO₂ storage site. The 36 km² survey included approximately 5000 mixed (Vibroseis and explosives) source points recorded with a 25 m inline source and receiver spacing. The target reservoir is a saline aquifer, at approximately 1450 m depth, encased and sealed by carbonate formations. Acquisition and processing parameters were influenced by the rough topography and relatively complex geology. A strong near surface velocity inversion is evident in the data, affecting the quality of the data. The resulting 3-D image provides constraints on the key features of the geologic model. The Hontomín structure is interpreted to consist of an approximately 10⁷ m² large elongated dome with two major W–E and NW–SE striking faults bounding it.

1 Introduction

The Hontomín structure has been classified as an example of a forced fold-related dome structure (Tavani et al., 2013). This type of folding is generally closely related to the development of extensional fault systems (Schlische, 1995; Cosgrove and Ameen, 2000; Tavani et al., 2011, 2013). They can develop under varying conditions (Braun et al., 1993, Jin et al., 2006) and their presence has been proposed in the Mesozoic Basque-Cantabrian Basin of Northern Iberia (Soto et al., 2011; Tavani et al., 2011, 2013). The formation prerequisite for these structures involves the existence of a ductile layer which acts as a major decoupling zone that is able to separate the deformation

SED

5, 1575–1614, 2013

3-D reflection seismic imaging of the Hontomín structure

J. Alcalde et al.

Title Page

Abstract

Introduction

Conclusions

References

Tables

Figures

⏪

⏩

◀

▶

Back

Close

Full Screen / Esc

Printer-friendly Version

Interactive Discussion



3-D reflection seismic imaging of the Hontomín structure

J. Alcalde et al.

Title Page

Abstract

Introduction

Conclusions

References

Tables

Figures

⏪

⏩

◀

▶

Back

Close

Full Screen / Esc

Printer-friendly Version

Interactive Discussion

of the sedimentary cover from the deformation and faulting occurring at the basement. The decoupling level in this area is formed by Triassic evaporites, which separate the pre-rift Upper Triassic to Middle Jurassic folded sediments from the Paleozoic to Lower Triassic faulted rocks of the basement. The structure appears to have been generated by reactivation of the pre-existing extensional basin architecture during a compressional phase associated with Cenozoic Tectonics affecting the Pyrenees. During this compressive stage the overlying Mesozoic sequence overrid the Cenozic Ebro Foreland Basin (Martínez-Torres, 1993). Thus, the area constitutes a unique case study of a major deformation system within the Basque-Cantabrian Basin in the Northern Iberian peninsula.

The Hontomín structure, along with the Ayoluengo structure, has been targeted for hydrocarbon exploration in the Northern Iberian peninsula (Alvarez, 1994; Merten, 2006; Beroiz and Permanyer, 2011). Thus, the area has been extensively studied since the early 1970's. A number of 2D seismic reflection transects were acquired with the aim to unravel the regional structure (Beroiz and Permanyer, 2011). The subsurface stratigraphy includes a carbonate Jurassic sequence that hosts a deep saline aquifer and a high quality seal formation. This stratigraphy motivated new interest in the area as the structure could be considered feasible for geological storage of CO₂ (Orr, 2004; Baines and Worden, 2004; Alcalde et al., 2013).

Geophysical methods have been broadly used for the characterization of geological structures (Martí et al., 2002; Preston et al., 2005; Förster et al., 2006). Amongst these, seismic methods provide high-resolution images and baseline models of hydrocarbon producing and/or storage reservoirs (Juhlin et al., 2007; White, 2009). The interest in the Hontomín structure motivated the acquisition of a number of geophysical data sets intended to characterize the Hontomín subsurface (e.g. Alcalde et al., 2013; Ogaya et al., 2013; Ugalde et al., 2013). The active seismic experiments carried out in the area were initially discussed in Alcalde et al. (2013). These included a 3-D seismic reflection data set, acquired with the aim of obtaining a 3-D image of the Hontomín

structure. Constraining the tectonic framework of the area and providing a geological and seismic baseline model were the main aims of the survey.

The study area is geologically complex and, at the surface, topographically irregular. One of the difficulties encountered during processing is the existence of velocity inversions at relatively shallow depths which complicate the determination of optimum static corrections. In general terms, the Hontomín area is a very heterogeneous folded structure, composed of mixed sedimentary marine carbonate and continental siliciclastic sediments. According to well-log data, the reservoir-seal system within the Hontomín structure is a carbonate sequence located at approximately 1500 m depth. Reflection seismic methods often encounter difficulties when attempting to image carbonate reservoirs. Suggested reasons behind this are the absence of distinct layering during the deposition and diagenetic alterations of the carbonate sediments (Masferro et al., 2003; Braaksma et al., 2006; Von Hartmann et al., 2012), abrupt impedance and velocity changes (Rudolph et al., 1989; Janson et al., 2007), and more generally, high structural complexity (Phipps, 1989; Rudolph et al., 1989; Erlich et al., 1990; Kenter et al., 2001). This was an important issue during velocity analysis. Other problems encountered related to acquisition and processing are presented and discussed in this work.

The revised processing scheme used in the present study was adapted to the characteristics of the Hontomín subsurface. The resulting final image features higher coherency than that presented in Alcalde et al. (2013) throughout the entire seismic volume. This enables a better analysis and identification of the subsurface structures, providing a definitive seismic reference model of the study area. Although the focus of this paper is the acquisition and processing of the 3-D dataset, the final 3-D seismic reflection image obtained for the Hontomín structure, as well as a preliminary interpretation, are presented.

SED

5, 1575–1614, 2013

3-D reflection seismic imaging of the Hontomín structure

J. Alcalde et al.

Title Page

Abstract

Introduction

Conclusions

References

Tables

Figures



Back

Close

Full Screen / Esc

Printer-friendly Version

Interactive Discussion



2 Geological setting

The Hontomín structure (Fig. 1) is bordered by the NW-SE Ubierna fault to the South-West (Tavani et al., 2011), the Poza de la Sal diapir to the north (Quintà et al., 2012) and the Ebro and Duero basins to the East and South-West, respectively. The study area is located within in the North-Castilian Platform, a Mesozoic sub-unit on the western part of the Basque-Cantabrian basin (Serrano and Martinez del Olmo, 1990) that developed during the opening of the Atlantic Ocean and the Bay of Biscay (Ziegler, 1989). This Mesozoic extensional regime generated a synformal domain in the region (Pujalte et al., 2004; Quintà and Tavani, 2012), characterized by a thick sedimentary sequence (Quesada et al., 2005). Due to the subsequent Alpine compressional regime, small-scale inversion structures were produced, leading to reverse, right-lateral and left-lateral reactivation of the pre-existing faults (Tavani et al., 2011, 2013; Quintà and Tavani, 2012).

The extensive exploration for natural resources within the area (Alvarez, 1994; Merten, 2006; Beroiz and Permanyer, 2011) produced a relatively large amount of geophysical and geological data. This includes vintage 2-D seismic reflection data, well-logs, borehole core samples, etc. The existing data indicate that the reservoir and seal formations are Jurassic in age, and form a slightly elongated dome-like structure with an overall aerial extent of $5 \times 3 \text{ km}^2$. From a stratigraphic perspective, the lowest Mesozoic succession (Fig. 1b) is the Keuper Facies, which forms the core of the target dome. The “Carniolas” unit is composed of evaporites, dolomites and marls (sebkha facies) and lies over the Keuper Facies, representing the boundary between the Triassic and Lower Jurassic (Quesada et al., 2005; Pujalte et al., 2004). The Lower Jurassic sediments can be described with four units: Limestone Lias and Marly Lias, and Pelletic Dogger and Limestone Dogger. They are characterized by shallow marine carbonate ramp sediments and hemipelagic ramp sediments. The Upper Jurassic-Lower Cretaceous transition is constituted by the Purbeck Facies, formed by clays, sandstone and carbonate rocks. The remainder of the Lower Cretaceous succession consists of sili-

SED

5, 1575–1614, 2013

3-D reflection seismic imaging of the Hontomín structure

J. Alcalde et al.

Title Page

Abstract

Introduction

Conclusions

References

Tables

Figures

◀

▶

◀

▶

Back

Close

Full Screen / Esc

Printer-friendly Version

Interactive Discussion



ciclastic sediments from Weald, Escucha and Utrillas Facies, mainly composed of a series of sandstones and shales, and occasionally microconglomerates. The uppermost rocks (outcropping in the Hontomín area) are Upper Cretaceous carbonates and Cenozoic rocks (lacustrine and detritic) lying uncomformably over the Mesozoic successions. The structure is bounded to the south by a strike-slip fault associated to the Ubierna Fault (Tavani et al., 2011).

Four pre-existing boreholes (H1, H2, H3 and H4 in Fig. 2), reaching depths between 900 and 1832 m, sampled the Mesozoic succession. These boreholes were drilled between the 1970s and the 1990s for oil exploration purposes and some were still producing in 2009. Beneath the producing level a saline aquifer formation is present. It is located at approximately 1500 m depth, within Early Jurassic (Raethian-Sinemurian) shallow marine carbonate ramp sediments. This potential CO₂ storage formation is composed of a dolostone unit (upper part of the Carniolas unit), overlain by an oolitic limestone formation (Limestone Lias), with an average thickness of approximately 80 m. This reservoir level is fairly porous (over 12 % in average, Ogaya et al., 2013) and contains saline water with more than 20 g L⁻¹ of NaCl. The porosity of the Carniolas is believed to be the result of secondary dolomitization and different fracturing events. There is no available information on its permeability. The potential upper seal unit is comprised of marlstones and black shales from the hemipelagic ramp, corresponding to the Marly Lias unit (Pliensbachian and Toarcian in age).

3 Seismic data acquisition

The acquisition parameters (Table 1) were selected based on the knowledge derived from previous studies in the area (Gemodels/UB 2011, internal report). The survey size was designed to cover the entire Hontomín structure. These previous studies included surface geological mapping, reprocessing of vintage 2-D seismic exploration surveys and correlation with the exploration boreholes, which provided overall information of the subsurface structures.

SED

5, 1575–1614, 2013

3-D reflection seismic imaging of the Hontomín structure

J. Alcalde et al.

Title Page

Abstract

Introduction

Conclusions

References

Tables

Figures

◀

▶

◀

▶

Back

Close

Full Screen / Esc

Printer-friendly Version

Interactive Discussion



3-D reflection seismic imaging of the Hontomín structure

J. Alcalde et al.

Title Page

Abstract

Introduction

Conclusions

References

Tables

Figures

⏪

⏩

◀

▶

Back

Close

Full Screen / Esc

Printer-friendly Version

Interactive Discussion



The 3-D seismic survey geometry included 22 source lines perpendicular to 22 receiver lines, with intervals of 25 m between sources and receivers (Fig. 2). The distance between receiver lines was 250 m, and source lines 275 m. The survey was acquired in 5 stages corresponding to different patches (swaths), with patches at the edge of the survey consisting of 6 active receiver lines, and the inner patches consisting of 10 receiver lines. A maximum of 120 channels were active per receiver line, resulting in a maximum of 1200 traces per shot gather.

The survey was originally designed to be fully acquired with a Vibroseis source (M22 vibrators). However, logistical issues (mainly due to the rough topography in the eastern part) forced the use of explosives in about 24 % of the acquired data. The selected parameters for the Vibroseis source were two 16 s sweeps, with an 8–80 Hz bandwidth. The explosive source consisted of 450 g of explosives, deployed in three 1.5 m deep holes for each shot point. The total number of source points was 4818, resulting in 4 333 605 traces.

The use of two different sources during the acquisition resulted in different seismic signatures in the shot gathers depending upon what type of source was used (Fig. 3). The explosive shot records are more strongly contaminated with ground roll and low frequency guided waves than the Vibroseis shot records. The frequency content of the Vibroseis shots was determined by the sweep bandwidth of the source (i.e. 8–80 Hz), whereas the explosive data, which feature lower amplitude, resulted in a broader bandwidth, up to 100 Hz (Fig. 4).

4 Seismic data processing

The relatively regular pattern of the acquisition geometry (Fig. 2) gives a natural bin size of 12.5×12.5 m for the CDP bins, resulting in a maximum CDP fold of 36 traces/CDP (Fig. 5a). This fold value is relatively conventional in land surveys and for reservoir characterization (Ashton et al., 1994; Roche, 1997) and affordable from the academic point of view. According to previous information of the study area (Geomodels/UB 2011,

3-D reflection seismic imaging of the Hontomín structure

J. Alcalde et al.

Title Page

Abstract

Introduction

Conclusions

References

Tables

Figures



Back

Close

Full Screen / Esc

Printer-friendly Version

Interactive Discussion



internal report; Ogaya et al., 2013), dipping events steeper than 16° are rather unexpected, and therefore, quasi-horizontal dips were assumed in the processing. Source-receiver offsets of up to 2500 m (Fig. 5b) were enough to constrain reflections from a depth of 1500 m (1150 ms, assuming an average velocity of 3500 m s^{-1}). Furthermore, at travel times corresponding to this target depth, surface-wave energy is considerably decreased. The swath acquisition provided a well-sampled azimuthal coverage (Fig. 5c), which assures the three-dimensionality of the data. The available well-log data indicate that the lithologies with higher impedance contrast are located above 1400 ms two-way traveltime (twt) in most cases. Taking this into account the data were processed down to 1500 ms. The processing flow (Table 2) was designed and implemented in order to enhance the S/N ratio and image the target structures.

4.1 Source matching

The use of multiple sources in seismic data acquisition introduces additional complexity to the processing, due to the need to homogenize their phase characteristics (Steer et al., 1996; Feroci et al., 2000). Since both Vibroseis and dynamite sources were utilized in the survey (Fig. 2), efforts were made to match source wavelets and bulk time shifts between the dynamite and Vibroseis traces, in order to improve the lateral continuity of the final stacked volume. Although the conventional approach is to convert the Vibroseis source data to minimum phase, given that most of the survey consisted of Vibroseis shots, with the dynamite shots confined to the survey edges, the minimum phase dynamite wavelet was converted to zero-phase to match the Vibroseis wavelet. In order to do this, two wavelet matching processes were tested: (1) applying trace wide time and phase shifts and (2) a convolutional match filter and time shift. The match filter used to convert the dynamite wavelets to zero-phase was based on a wavelet extracted from 10 dynamite shots from different parts of the survey.

In order to assess the best parameters for each different wavelet matching method, co-located dynamite and Vibroseis trace pairs were selected. For the time and phase shift wavelet matching method, a range of different values of both were applied to the

dynamite trace. Thus, the correlation co-efficient between the two traces in a given time window was assessed. This analysis was also performed in the same time window after applying the match filter and variable time shift. The optimum parameters were selected based on those which gave the highest correlation coefficient. It was observed that, based on tests performed with synthetic data, the effects of noise could be overcome by stacking the correlation coefficients across many dynamite-Vibro seis trace pairs.

Figure 6 shows the stacked correlation coefficients for 1080 pairs of dynamite and Vibroseis traces, located within 25 m of each other, taken from 10 different shots. The best match between the dynamite and the Vibroseis traces is obtained at time and phase shifts of 12 ms and -150 degrees, respectively. For the match filter method, the optimum time shift to use in addition to the match filter was 24 ms.

Certain corrections were performed in order to diminish the disparity in the amplitudes and frequency content of the shot-gathers (Fig. 4). The frequency contents were equalized by the use of combined bandpass filtering and spectral equalization in the pre- and post-stack stages. The high amplitude contrast forced the use of AGC and trace balancing (250 and 300–1300 ms time windows, respectively), since the spherical divergence correction did not completely equalize the amplitudes.

4.2 Static corrections

Elevation and refraction statics are key processes for obtaining a high quality final seismic image (Juhlin et al., 2007; Malehmir and Bellefleur, 2009; Malehmir and Juhlin, 2010). In our case, they were essential for improving the final image due to the large topographic changes (up to 200 m) and heterogeneous geology present in the study area. The entire data set was referenced to a datum of 1070 m above mean sea level (m.s.l.), just above the highest altitude of the survey. The replacement velocity, based upon apparent velocities in the shot-records, was 3500 m s^{-1} . The resultant elevation static model adjusted the data by 67 ms on average, with maximum corrections of 107 ms.

SED

5, 1575–1614, 2013

3-D reflection seismic imaging of the Hontomín structure

J. Alcalde et al.

Title Page

Abstract

Introduction

Conclusions

References

Tables

Figures

◀

▶

◀

▶

Back

Close

Full Screen / Esc

Printer-friendly Version

Interactive Discussion



3-D reflection seismic imaging of the Hontomín structure

J. Alcalde et al.

Title Page

Abstract

Introduction

Conclusions

References

Tables

Figures

◀

▶

◀

▶

Back

Close

Full Screen / Esc

Printer-friendly Version

Interactive Discussion



The refraction static modeling was an arduous process due to the heterogeneous characteristics of the subsurface. One of the most interesting features observed is the lack of clear first arrivals in the data at offsets greater than 300 m (black arrows in Fig. 3c and d). This signal disappearance is observed as a sharp (black arrows in Fig. 3c) or as gradual loss of amplitude (black arrows in Fig. 3d) with increasing offset. This phenomenon is observed in the whole survey for both source types. At far offsets, this results in a lack of signal in the upper 500 ms (Fig. 3e), i.e., a “shadow zone”. The existence of this shadow zone added difficulty to the picking of first arrivals in the near offset traces, and impossible at offsets larger than about 700 m. In spite of this difficulty, more than 670,000 first breaks, ranging from 0–500 m offsets, were manually picked. The refraction statics were calculated using a two-layer model, with an input fixed upper layer velocity (at 1070 m m.s.l.) of 1900 m s^{-1} , and a lower half space velocity (at a starting depth of 40 m below the surface) of 3500 m s^{-1} . The resulting model refraction statics ranged from 0 to 40 ms (RMS of approximately 8 ms), whereas the residual refraction statics were always below 4 ms. Static corrections, particularly the refraction static corrections, increased the quality of the final image and improved the coherency of the reflections in the data (Figs. 7c and 8c).

4.3 Stack, post-stack processing and migration

New velocity analysis was performed after every major processing step; this was used to monitor the improvement in the stacked image. Velocity analysis after static corrections provided further support for the existence of a velocity inversion between 200 to 500 ms. The CDP gathers show disrupted reflections before and after NMO corrections (Fig. 9). An example of a stacked section (up to step 14 in Table 2) is shown in Fig. 10a. After a satisfactory NMO model had been obtained, a 3-D Kirchhoff DMO code (based on Hale and Artley, 1993) was applied to the pre-stack data, using the NMO velocities as initial input (Fig. 10b). Although the Hontomín structures are not steeply dipping, the 3-D DMO processed volume shows increased coherency and improved definition of the flanks of the dome, as well as improvement in the continuity of reflections, as

compared to the stacked data without DMO applied (black arrows in Fig. 10a and b). Post-stack F-XY-deconvolution in the inline and crossline directions was implemented to remove random noise and further increase coherency. Different finite-difference and phase shift time migration codes were tested. We chose a 45° finite-difference post-stack algorithm, due to the spatial variation of the velocities present in the study area.

5 Processing results and interpretation

5.1 Analysis of the seismic image

A section comparing the preliminary image obtained by Alcalde et al. (2013), and the same section obtained in this work can be found in Fig. 11. In the revised work flow, the subsurface is well imaged in the migrated volume from approximately 75 ms down to 1350 ms, completely covering the target structure. Significant differences between the two volumes can be observed. In general, the revised work flow exhibits less low-frequency background noise and an overall increase of the signal to noise ratio. The northern part shows clearer reflections and improved definition of the defining structures. The revised work flow also has lower migration-related artifacts, especially in the edges of the section.

The lateral continuity of the reflections is limited in the whole seismic volume, due to the influence of the shallow velocity inversion, as well as to the existence of heterogeneities associated with small scale fracture zones. However, the quality of the processed data is enough to allow us to perform a detailed analysis of key seismic events/facies and their distribution within the migrated seismic volume (Fig. 12a and Fig. 13). Line $\alpha-\alpha'$ (location in Fig. 2) crossing boreholes H4, H2 and H1 is used in this section to analyze the seismic image and correlate it with the main geological units (Fig. 12). This characterization is applicable to the whole seismic volume.

Three domains were identified by the analysis of the seismic facies in the seismic dataset. The first domain contains low amplitude, discontinuous reflections (A). It is

SED

5, 1575–1614, 2013

3-D reflection seismic imaging of the Hontomín structure

J. Alcalde et al.

Title Page

Abstract

Introduction

Conclusions

References

Tables

Figures

◀

▶

◀

▶

Back

Close

Full Screen / Esc

Printer-friendly Version

Interactive Discussion



3-D reflection seismic imaging of the Hontomín structure

J. Alcalde et al.

Title Page

Abstract

Introduction

Conclusions

References

Tables

Figures

◀

▶

◀

▶

Back

Close

Full Screen / Esc

Printer-friendly Version

Interactive Discussion



located at the bottom of the seismic volume, below approximately 1100 ms. It shows a reduction in amplitudes compared to the interval immediately above, and less continuity in the reflections. Within this domain, a brighter set of parallel reflections (B) is found between inlines 1305 and 1340. Overlying the A and B facies sets, the second domain is composed of a sequence of more continuous, high amplitude reflections (C). They show an asymmetric dome-shaped geometry with an average thickness of 300 ms (Fig. 12). The boundary between the A and C reflection packages is chaotic across most of the seismic volume. The C set is characterized by higher amplitudes compared to the surrounding seismic facies, with dominant frequencies around 30 to 40 Hz. Its amplitudes decrease towards the end of the second domain, which is 300 ms thick on average.

Over the dome flanks, the third domain begins with a set of reflections (D) overlying the C set. Set D is characterized by very high amplitudes and 80–120 ms thickness. However, the D package is only observed in the Northern portion of the study area. The overlying E set is characterized by variable amplitude and non-planar reflections. A high amplitude reflection at approximately 575 ms bounds the E set. Above this, a set of higher amplitudes and more continuous parallel reflections appear (F). This package has an approximately constant thickness of 400 ms. In Fig. 12, Fig. 12a, set F shows an important lateral change of the seismic properties (at inline 1260, approximately), where a more continuous character to the North becomes less continuous to the South. At the top of the seismic volume, another set of discontinuous reflections (G), nearly 200 ms thick, covers the whole area and generally extends to the surface. In the southern part, a set of south-dipping reflections (H) with high coherency overlies set G near the surface.

5.2 Correlation between seismic data and geology

The subsurface structure of the Hontomín CO₂ storage site described below is based on the seismic data, information from borehole data and previously presented information of the underground and surface geology. The available well-log data lack velocity

3-D reflection seismic imaging of the Hontomín structure

J. Alcalde et al.

[Title Page](#)[Abstract](#)[Introduction](#)[Conclusions](#)[References](#)[Tables](#)[Figures](#)[⏪](#)[⏩](#)[◀](#)[▶](#)[Back](#)[Close](#)[Full Screen / Esc](#)[Printer-friendly Version](#)[Interactive Discussion](#)

and/or density information in approximately the first 400 m, and totally lack check-shot information. This makes it extremely difficult to obtain a precise seismic to well tie. An example of the calculation of a synthetic trace for the H3 well using the available well-log information is shown in Fig. 14. The time-depth relationship of the synthetic was set manually, thus featuring a limited accuracy.

The seismic domains previously described represent the three main subsurface geometries found in Hontomín. Within them, five different units have been interpreted within the study area (from bottom to top): (1) Triassic, (2) Jurassic, (3) Lower Cretaceous, (4) Upper Cretaceous, and (5) Cenozoic (Fig. 12b).

The Triassic package (Fig. 12b) generally has an inhomogeneous seismic pattern. It includes reflection sets A and B. The presence of a variable quantity of anhydrite layers, together with the associated increase in velocity of these layers, could explain the lack of clear seismic events. Only in specific locations, such as B (Fig. 12a), can clear sub-horizontal layering be defined by high amplitude reflections. Surface and borehole data show a non-uniform, gradual change from anhydrite to carbonate, interpreted as resulting in a diffuse seismic response. The overlying Jurassic unit (Fig. 12b) is characterized by a high amplitude reflective body observed from 750 to 1200 ms, corresponding to seismic set C. It includes the target aquifer and an overlying seal layer. The Jurassic unit is overlain by the Lower Cretaceous unit, which includes seismic sets D, E and F. Set D probably corresponds to a transitional sedimentary package, which could explain why it only appears in the Northern portion of the seismic volume. The upper part of the Lower Cretaceous is formed by the Weald, Utrillas and Escucha Fm sediments (Fig. 1). Their boundaries are unclear, but they all feature high amplitudes and gently dipping plane-parallel layering. The shadow zone is probably contained within the boundary between sets F and G (150 ms TWT, approximately). This boundary divides the Lower and Upper Cretaceous. It is especially visible in the areas where the shadow zone is more noticeable (e.g. inline 1200 to 1250 in Fig. 12a). The Upper Cretaceous carbonates outcrop across the entire study area except on its southern and eastern ends, where the Upper Cretaceous beds drop and are overlain by the Cenozoic unit

and the signals do not sum constructively in the stacking process (Fig. 9). This feature could be a product of the interaction of the backscattered shear-wave energy with the deep reflections, although further studies should be performed to elucidate this aspect.

Additional difficulties arose during the data processing due to physical property changes related to the carbonate composition of the subsurface. In this sense, the carbonate sediments behave similarly to crystalline media, containing sharp velocity variations which produce a blurred seismic signature. As observed in similarly difficult reservoir imaging experiments, the most relevant processing steps for reaching a good final image were the elevation and refraction static corrections (e.g. Juhlin 1995; Malehmir et al., 2012). Although first break picking was hindered by the "shadow zone" (Fig. 3), the resultant static model was very successful in improving the seismic image (Fig. 8), which is in accordance with the heterogeneous surface geology.

For the source wavelet matching, the two wavelet matching methods (match filtering and phase and time shift) were applied to a subset of the data which was then stacked and qualitatively assessed. Both methods improved the data and when compared to each other both were very similar in overall performance. As the phase and time shift method was simpler to apply, this method was chosen and applied to the data in the final workflow. This resulted in enhanced reflector continuity and strength in areas of the stacked section, which contained both dynamite, and Vibroseis traces in the pre-stack gathers (Fig. 8). Due to the unequal distribution of the explosive source points throughout the Hontomín survey (Fig. 2), the source matching effects are only observed at the edges of the survey, where the explosive source concentration is higher.

6.2 Geometry of the deep structures

In general, the work flow outlined in Table 2 provides an improved image compared to the previous preliminary image presented in Alcalde et al. (2013) (Fig. 11). Our final fully-processed seismic volume allows an interpretation of the main five main geological units present in the study area (Fig. 12). The target Jurassic dome structure has been mapped from 650 ms to 1200 ms twt (Fig. 15a). The horizons corresponding to the top

SED

5, 1575–1614, 2013

3-D reflection seismic imaging of the Hontomín structure

J. Alcalde et al.

Title Page

Abstract

Introduction

Conclusions

References

Tables

Figures

◀

▶

◀

▶

Back

Close

Full Screen / Esc

Printer-friendly Version

Interactive Discussion



and the base of this structure have been mapped throughout the volume (Fig. 13). The top surface appears first just below 1050 ms and reaches its crest above 650 ms. The base surface appears at 1350 ms in the Northern part of the dataset, and peaks at 880 ms TWT. They define an elongated dome like structure. The geometry of the dome is almost symmetric up to 850 ms. From this point, the dome develops into an elongated shape in the NW–SE direction. It maintains this geometry until ~725 ms. The crest of the dome (at 650 ms) is found at the Eastern side of the H2 well, in an area between inlines 1270–1300 and crosslines 1130–1160 (Fig. 15). The calculated area of the dome is $9.38 \times 10^6 \text{ m}^2$.

The Hontomín structure is faulted at different scales. The Southern and Eastern fault mark the Southern and Eastern limit of the dome, respectively. The Southern fault crosses the entire processed volume, separating the southern third of the study area from the remainder (Figs. 12 and 13). It has been related to the Ubierna fault (Tavani et al., 2013) and described as a dextral strike-slip fault that outcrops within the study area. It is easily recognizable because it coincides with a change in the dip of the reflections, i.e. increased dips to the south side of the fault coupled with a loss of lateral continuity of the events. It is difficult to assess whether a vertical offset across it is present or not, since the fault cuts through dome-shape structures and different sections give varying interpretations of the offset. The fault also contains branches, only observable in certain sections of the seismic cube (Fig. 13). The Eastern fault presents the largest vertical offset of the study area (up to 380 m, Fig. 15b). It is nearly vertical near the surface and slightly dipping at depth. It has been mapped up to the Lower-Upper Cretaceous boundary. It marks a sharp seismic facies contrast. Other minor faults (e.g. the Central fault, Fig. 12b) with small offsets (less than ~20 ms) have been identified, but not included in this preliminary interpretation.

SED

5, 1575–1614, 2013

3-D reflection seismic imaging of the Hontomín structure

J. Alcalde et al.

Title Page

Abstract

Introduction

Conclusions

References

Tables

Figures

◀

▶

◀

▶

Back

Close

Full Screen / Esc

Printer-friendly Version

Interactive Discussion



7 Internal architecture

The frequency range at the target time (700–1200 ms) is from 30 to 70 Hz. This frequency range is wide enough to ensure a reasonable resolution at the aquifer level. The dominant frequency of the data ranges from 20 to 75 Hz. Thus, assuming an average velocity of 3900 m s^{-1} , the vertical resolution ranges between 13 to 50 m, based on the 1/4 wavelength criterion (Widess, 1973; Sheriff and Geldart, 1995). Based on the Fresnel zone criterion (Sheriff and Geldart, 1995; Yilmaz 2001), the lateral resolution for the deepest structures at depths of 1200 and 1500 m (approximately) range between 182 and 295 m, and 205 and 318 m, respectively. Migration tends to collapse the Fresnel zone (and therefore increase the spatial resolution) to approximately the dominant wavelength (Yilmaz, 2001). However, the presence of noise and migration-velocity related errors could degrade the lateral resolution significantly.

A limited definition of the internal architecture was achieved in the interpretation stage. First, the carbonate units show subtle acoustic impedance changes (determined from the existing logs) and significant scattering. This makes the identification of the internal structures very difficult. Second, to date, the available velocity information from well logs is incomplete for the first 400 m. The latter issue does not allow us to tie the seismic data to the available boreholes. In this respect, new boreholes geared to hydrogeological modeling should cover this lack of information; nevertheless, these are not currently available. New processing steps should be performed in order to carry out the detailed geological interpretation of the 3-D volume, including a time to depth conversion of the data with the velocity information derived from logging tools, and, if possible, pre-stack depth migration.

Besides this lack of internal definition, we have calculated a theoretical CO_2 capacity of the reservoir unit within the Jurassic structure. The surface geology indicates that Jurassic units are relatively homogeneous and their thickness are relatively constant. The calculation takes into account the characteristics of the top of the interpreted dome, and extrapolates it downwards. Assuming an average thickness and porosity of the

SED

5, 1575–1614, 2013

3-D reflection seismic imaging of the Hontomín structure

J. Alcalde et al.

Title Page

Abstract

Introduction

Conclusions

References

Tables

Figures



Back

Close

Full Screen / Esc

Printer-friendly Version

Interactive Discussion



steps to be carried out. The processed data set represents the 3-D seismic model that could be used as a baseline model within a CO₂ storage scenario.

Acknowledgements. Funding for this Project has been partially provided by the Spanish Ministry of Industry, Tourism and Trade, through the CIUDEN-CSIC-Inst. Jaime Almera agreement (Characterization, Development and Validation of Seismic Techniques applied to CO₂ Geological Storage Sites) and by the European Union through the Technology Demonstration Plant of Compostilla OXYCFB300 Project (European Energy Programme for 534 Recovery). Additional support has been provided by Spanish Ministry of Education Science (CSD2006-00041), Generalitat de Catalunya (2009SGR006) and CSIC JAE-Doc postdoctoral research contract (E. S.). The sole responsibility of this publication lies with the authors. The European Union is not responsible for any use that may be made of the information contained herein. Juan Alcalde is being currently supported by the Fundación Ciudad de la Energía (CIUDEN) Research training program. We sincerely thank CGGVeritas for their assistance during the acquisition. Processing has been carried out using GLOBE ClaritasTM, under license from the Institute of Geological and Nuclear Sciences Limited, Lowre Hutt, New Zealand and SeismicUnix from CWP (Center for the Wave phenomena, Colorado School of Mines). We thank all the people involved directly or indirectly in the elaboration of this work.

References

- Alcalde, J., Martí, D., Calahorrano, A., Marzán, I., Ayarza, P., Carbonell, R., Juhlin, C., and Pérez-Estaún, A.: Active seismic characterization experiments of the Hontomín research facility for geological storage of CO₂, Spain, *Int. J. Greenh. Gas Con.*, in press, doi:10.1016/j.ijggc.2013.01.039, 2013.
- Alvarez, C.: Hydrocarbons in Spain – exploration and production, *First Break*, 12, 1994.
- Arts, R., Eiken, O., Chadwick, A., Zweigel, P., van der Meer, L., and Zinszner, B.: Monitoring of CO₂ injected at Sleipner using time-lapse seismic data, *Energy*, 29, 1383–1392, 2004.
- Ashton, P., Bacon, B., Deplante, C., Sinclair, D. T., and Redekop, G.: 3-D seismic survey design, *Oilfield Review*, 19–32, 1994.
- Baines, S. J. and Worden, R. H. (Eds.): *Geological Storage of Carbon Dioxide*, *Geol. Soc. Lond. SP*, 233, 1–6, 2004.

SED

5, 1575–1614, 2013

3-D reflection seismic imaging of the Hontomín structure

J. Alcalde et al.

Title Page

Abstract

Introduction

Conclusions

References

Tables

Figures

◀

▶

◀

▶

Back

Close

Full Screen / Esc

Printer-friendly Version

Interactive Discussion



3-D reflection seismic imaging of the Hontomín structure

J. Alcalde et al.

Title Page

Abstract

Introduction

Conclusions

References

Tables

Figures

◀

▶

◀

▶

Back

Close

Full Screen / Esc

Printer-friendly Version

Interactive Discussion



Braaksma, H., Proust, J. N., Kenter, J. A. M., Drijkoningen, G. G., and Filippidou, N.: Sedimentological, Petrophysical, and Seismic Characterization of an Upper Jurassic Shoreface-Dominated Shelf Margin (the Boulonnais, Northern France), *J. Sediment. Res.*, 76, 175–199, 2006.

5 Braun, J., Batt, G. E., Scott, D. J., McQueen, H., and Beaseley, R.: A simple kinematic model for crustal deformation along two- and three- dimensional listric normal faults derived from scaled laboratory experiments, *J. Struct. Geol.*, 16, 1477–1490, 1994.

Cosgrove, J. W. and Ameen, M. S. (Eds.): *Forced Folds and Fractures*, Geological Society, London, Special Publications, 169, The Geological Society of London, 2000.

10 Elío, J., Nisi, B., Ortega, M. F., Mazadiego, L. F., Vaselli, O., and Grandia, F.: CO₂ soil flux baseline at the Technological Development Plant for CO₂ Injection at Hontomin (Burgos, Spain), *Int. J. Greenh. Gas Con.*, 18, 224–236, 2013.

Erlich, R. N., Barrett, S. F., and Bai Ju Guo: Seismic and geologic characteristics of drowning events on carbonate platforms, *AAPG Bulletin*, 74 1523–1537, 1990.

15 Feroci, F., Orlando, L., Balia, R., Bosman, C., Cardarelli, E., and Deidda, G.: Some considerations on shallow seismic reflection surveys, *J. Appl. Geophys.*, 45, 127–139, 2000.

Förster, A., Norden, B., Zinck-Jørgensen, K., Frykman, P., Kulenkampss, J., Spangerberg, E., Erzinger, J., Zimmer, M., Kopp, J., Borm, G., Julin, C., Cosma, C., and Hurter, S.: Baseline characterization of the CO₂SINK geological storage site at Ketzin, Germany, *Environ. Geosci.*, 13, 145–161, 2006.

20 Hale, D. and Artley, C.: Squeezing dip moveout for depth-variable velocity, *Geophysics*, 58, 257–264, 1993.

Ivanova, A., Kashubin, A., Juhojuntti, N., Kummerow, J., Henningses, J., Juhlin, C., Lüth, S., and Ivandic, M.: Monitoring and volumetric estimation of injected CO₂ using 4D seismic, petrophysical data, core measurements and well logging: a case study at Ketzin, Germany, *Geophys. Prospect.*, 60, 957–973, doi:10.1111/j.1365-2478.2012.01045.x, 2012.

25 Janson, X., Eberli, G. P., Bonnafte, F., Gaumet, F., and de Casanove, V.: Seismic expressions of a Miocene prograding carbonate margin, Mut Basin, Turkey, *AAPG Bulletin*, 91, 685–713, 2007.

30 Jin, G. and Groshong, R. H.: Trishear kinematic modeling of extensional fault-propagation folding, *J. Struct. Geol.*, 28 170–183, 2006.

Juhlin, C.: Imaging of fracture zones in the Finnsjön area, central Sweden, using the seismic reflection method, *Geophysics*, 60, 66–75, 1995.

3-D reflection seismic imaging of the Hontomín structure

J. Alcalde et al.

Title Page

Abstract

Introduction

Conclusions

References

Tables

Figures

◀

▶

◀

▶

Back

Close

Full Screen / Esc

Printer-friendly Version

Interactive Discussion



Juhlin, C., Giese, R., Zinck-Jørgensen, K., Cosma, C., Kazemeini, H., Juhojuntti, N., Lüth, S., Norden, B., and Förster, A.: 3-D baseline seismics at Ketzin, Germany: The CO₂SINK project, *Geophysics*, 72, B121–B132, 2007.

Kenter, J. A. M., Bracco Gartner, G. L., and Schlager, W.: Seismic models of a mixed carbonate-siliciclastic shelf margin: Permian upper San Andres Formation, Last Chance Canyon, New Mexico, *Geophysics*, 66, 1744–1748, 2001.

Koperna, G. J., Kuuskraa, V. A., Riestenberg, D. E., Rhudy, R., Trautz, R., Hill, G., Esposito, R. A.: The SECARB anthropogenic test: The first U.S. integrated CO₂ capture, transportation, and storage test, Carbon Management Technology Conference [CMTC] (Orlando, FL, 2/7–9/2012) Proceedings, p. 15, 2012.

Lumley, D.: 4D seismic monitoring of CO₂ sequestration, *Leading Edge* (Tulsa, OK), 29, 150–155, 2010.

Malehmir, A. and Bellefleur, B.: 3-D seismic reflection imaging of volcanic-hosted massive sulfide deposits: Insights from reprocessing Halfmile Lake data, New Brunswick, Canada, *Geophysics*, 74, 209–213, 2009.

Malehmir, A. and Juhlin, C.: An investigation of the effects of the choice of stacking velocities on residual statics for hardrock reflection seismic processing, *J. Appl. Geophys.*, 72, 28–38, doi:10.1016/j.jappgeo.2010.06.008, 2010.

Malehmir, A., Juhlin, C., Wijns, C., Urosevic, M., Valasti, P., and Koivisto, E.: 3-D reflection seismic investigation for open-pit mine planning and exploration in the Kevitsa Ni-Cu-PGE deposit, Northern Finland, *Geophysics*, 77, WC95–WC108, 2012.

Martens, S., Kempka, T., Liebscher, A., Lüth, S., Möller, F., Myrntinen, A., Norden, B., Schmidt-Hattenberger, C., Zimmer, M., and Kühn, M.: Europe's longest-operating on-shore CO₂ storage site at Ketzin, Germany: a progress report after three years of injection, *Environ. Earth Sci.*, 67, 323–334, 2012.

Martí, D., Carbonell, R., Tryggvason, Escuder-Viruete, J., and Pérez-Estaún, A.: Mapping brittle fracture zones in three dimensions: high resolution travelttime seismic tomography in a granitic pluton, *Geophys. J. Int.*, 149, 95–105, 2002.

Masaferro, J., Bourne, R., and Jauffred, J.: 3-D visualization of carbonate reservoirs, *The Leading Edge*, 22, 18–25, doi:10.1190/1.1542751, 2003.

Merten, R.: Petroleum exploration and production in Spain, *Z. Dtsch. Ges. Geowiss.*, 157, 717–732, 2006.

3-D reflection seismic imaging of the Hontomín structure

J. Alcalde et al.

Title Page

Abstract

Introduction

Conclusions

References

Tables

Figures

◀

▶

◀

▶

Back

Close

Full Screen / Esc

Printer-friendly Version

Interactive Discussion



Ogaya, X., Ledo, J., Queralt, P., Marcuello, A., and Quintà, A.: First geoelectrical image of the subsurface of the Hontomín site (Spain) for CO₂ geological storage: A magnetotelluric 2D characterization, *Int. J. Greenh. Gas Con.*, 13, 168–179, 2013.

Orr, F.: Storage of Carbon Dioxide in geologic Formations, *J. Petrol. Technol.*, 56, 90–97, 2004.

5 Pérez-Estaún, A., Gómez, M., and Carrera, J.: El almacenamiento geológico de CO₂, una de las soluciones al efecto invernadero (Geological storage of CO₂, one of the solutions to the greenhouse effect), *Enseñanza de Ciencias de la Tierra*, 17, 179–189, 2009.

Phipps, G. G.: Exploring for dolomitized Slave Point carbonates in northeastern British Columbia, *Geophysics*, 54, 806–814, 1989.

10 Preston, C., Monea, M., Jazrawi, W., Brown, K., Whittaker, S., White, D., Law, D., Chalaturnyk, R., and Rostron, B.: IEA GHG Weyburn CO₂ monitoring and storage project, *Fuel Process. Technol.*, 86, 1547–1568, 2005.

Pruess, K. and García, J.: Multiphase flow dynamics during CO₂ disposal into saline aquifers, *Environ. Geol.*, 42, 282–295, 2002.

15 Pujalte, V., Robles, S., García-Ramos, J. C., and Hernández, J. M.: El Malm-Barremiense no marinos de la Cordillera Cantábrica, in: *Geología de España*, edited by: Vera, J. A., SGE-IGME, Madrid, 288–291, 2004.

Quesada, S., Robles, S., and Rosales, I.: Depositional architecture and transgressive-regressive cycles within Liassic backstepping carbonate ramps in the Basque-Cantabrian basin, northern Spain, *J. Geol. Soc.*, 162, 531–538, 2005.

Quintà, A. and Tavani, S.: The foreland deformation in the south-western Basque-Cantabrian Belt (Spain), *Tectonophysics*, 576–577, 4–19, 2012.

25 Quintà, A., Tavani, S., and Roca, E.: Fracture pattern analysis as a tool for constraining the interaction between regional and diapir-related stress fields: Poza de la Sal Diapir (Basque Pyrenees, Spain), *Geol. Soc. Lond. SP*, 363, 521–532, doi:10.1144/SP363.25, 2012.

Roche, S. L.: Time-lapse, multicomponent, three-dimensional seismic characterization of San Andres shallow shelf carbonate reservoir, vacuum field, Lea county, New Mexico, Ph.D. Thesis, Colorado School of Mines, 1997.

30 Rudolph, K. W., Schlager, W., and Biddle, K. T.: Seismic models of a carbonate foreslope-to-basin transition, Picco di Vallandro, Dolomite Alps, northern Italy, *Geology*, 17, 453–456, 1989.

Schlische, R. W.: Geometry and Origin of Fault-related Folds in Extensional Settings, *AAPG Bulletin*, 79, 11-1661-1678, Ph.D. Thesis, Colorado School of Mines, 1995.

3-D reflection seismic imaging of the Hontomín structure

J. Alcalde et al.

Title Page

Abstract

Introduction

Conclusions

References

Tables

Figures

◀

▶

◀

▶

Back

Close

Full Screen / Esc

Printer-friendly Version

Interactive Discussion



- Serrano, A. and Martínez del Olmo, W.: Tectónica salina en el Dominio Cántabro-Navarro: evolución, edad y origen de las estructuras salinas, in: Formaciones Evaporíticas de la Cuenca del Ebro y Cadenas Periféricas, y de la Zona de Levante, edited by: Federico Ortí, C. and Salvany, M., Universidad de Barcelona – ENRESA, 39–53, 1990.
- 5 Sheriff, R. E. and Geldart, L. P.: Exploration seismology. History, Theory, and Data Acquisition, vol. 1., Cambridge University Press, New York, 1985.
- Steer, D., Brow, L., Knapp, J., and Baird, D.: Comparison of explosive and Vibroseis source energy penetration during COCORP deep seismic reflection profiling in the Williston Basin, Geophysics, 61, 211–221, 1996.
- 10 Tavani, S., Quintà, A., and Granado, P.: Cenozoic right-lateral wrench tectonics in the Western Pyrenees (Spain): The Ubierna Fault System, Tectonophysics, 509, 238–253, doi:10.1016/j.tecto.2011.06.013, 2011.
- Tavani, S., Carola, C., Granado, P., Quintà, A., and Muñoz, J. A.: Transpressive inversion of a Mesozoic extensional forced fold system with an intermediate décollement level in the Basque-Cantabrian Basin (Spain), Tectonics, 32, doi:10.1002/tect.20019, 2013.
- 15 Von Hartmann, H., Buess, H., Krawczyk, C. M., and Schulz, R.: 3-D seismic analysis of a carbonate platform in the Molasse Basin – reef distribution and internal separation with seismic attributes, Tectonophysics, 572–573, 16–25, 2012.
- White, D.: Monitoring CO₂ storage during EOR at the Weyburn-Midale Field, SEG, The leading Edge, 28, 838–842, doi:10.1190/1.3167786, 2009.
- 20 White, D. J., Burrowes, G., Davis, T., Hajnal, Z., Hirsche, K., Hutcheon, I., Majer, E., Rostron, B., and Whittaker, S.: Greenhouse gas sequestration in abandoned oil reservoirs: The International Energy Agency Weyburn pilot project, GSA Today, 14, 4–10, 2004.
- Widess, M. B.: How thin is a thin bed?, Geophysics, 38, 1176–1180, 1973.
- 25 Yilmaz, O.: Seismic Data Analysis – Processing, Inversion, and Interpretation of Seismic Data, Soc. of Expl. Geophys., Tulsa, OK, 2001.
- Ziegler, P. A.: Evolution of the North Atlantic: An Overview, AAPG Memoir, 46, in: Extensional Tectonics and Stratigraphy of the North Atlantic Margins, edited by: Tankard, A. J. and Balkwill, H. R., 111–129, 1989.

SED

5, 1575–1614, 2013

3-D reflection seismic imaging of the Hontomín structure

J. Alcalde et al.

Title Page

Abstract

Introduction

Conclusions

References

Tables

Figures

◀

▶

◀

▶

Back

Close

Full Screen / Esc

Printer-friendly Version

Interactive Discussion

**Table 1.** Aquisition parameters of the Hontomín 3-D survey.

Number of shotpoints	4936 (69-5005)
Shotpoint spacing	25 m
Source type	Vibroseis & Explosives
Sweep length	16 s
Sweeps per source point	2
Frequency range (Vibroseis)	8–80 Hz
Explosive charge per source point	450 g (3 boreholes)
Number of receiver points (traces)	4 333 605
Sample rate	1 ms
Receiver spacing	25 m
Maximum channels per shot	1200
Number of Inlines	463 (1000 : 1462)
Inline spacing	275 m (11 shots)
Number of Crosslines	431 (1000 : 1430)
Crossline spacing	250 m (10 receivers)
Number of CDPs	199 559
Bin size	12.5 × 12.5 m = 156.25 m ²
Maximum CDP fold (max traces/CDP)	36

Table 2. Processing steps applied to the seismic dataset.

Step	Parameters
1	Read 1.5 s SEG-Y data Trace edition: 140 000 traces First break picking (manual): 500 m offset range, 670 000 times picked
2	Spherical divergence correction
3	Source matching: -150° phase shift, 20 ms time shift applied to the explosive data
4	Surface consistent deconvolution: filter 100 ms, gap 14 ms, white noise 0.1 %
5	Elevation statics: datum 1070 m, replacement velocity 3500 m s^{-1}
5	Refraction static corrections
8	Air wave mute
9	Spectral equalization: 20 Hz window length, 20–30–90–120 Hz bandpass filter
10	Time-variant bandpass Filter: 35–50–100–140 Hz at 0–300 ms 27–40–85–120 Hz at 500–800 ms 20–30–70–100 Hz at 900–1500 ms
11	Residual statics (iterative)
12	Velocity Analysis
13	AGC: 250 ms
14	NMO: 50 % stretch mute
15	3-D DMO correction
16	Stack
17	Trace balance: window 300–1300 ms
18	Butterworth bandpass filter: 20–30–100–135 Hz (0.5–0.95–0.95–0.5)
19	Post-stack deconvolution: gap = 20 ms
20	Spectral equalization: 20 Hz window length, BP = 20–30–80–100 Hz
21	F_{XY} -deconvolution: inline and crossline directions
22	2.5 Finite-difference time migration, 45° algorithm
23	Top mute

SED

5, 1575–1614, 2013

3-D reflection seismic imaging of the Hontomín structure

J. Alcalde et al.

Title Page

Abstract

Introduction

Conclusions

References

Tables

Figures

◀

▶

◀

▶

Back

Close

Full Screen / Esc

Printer-friendly Version

Interactive Discussion



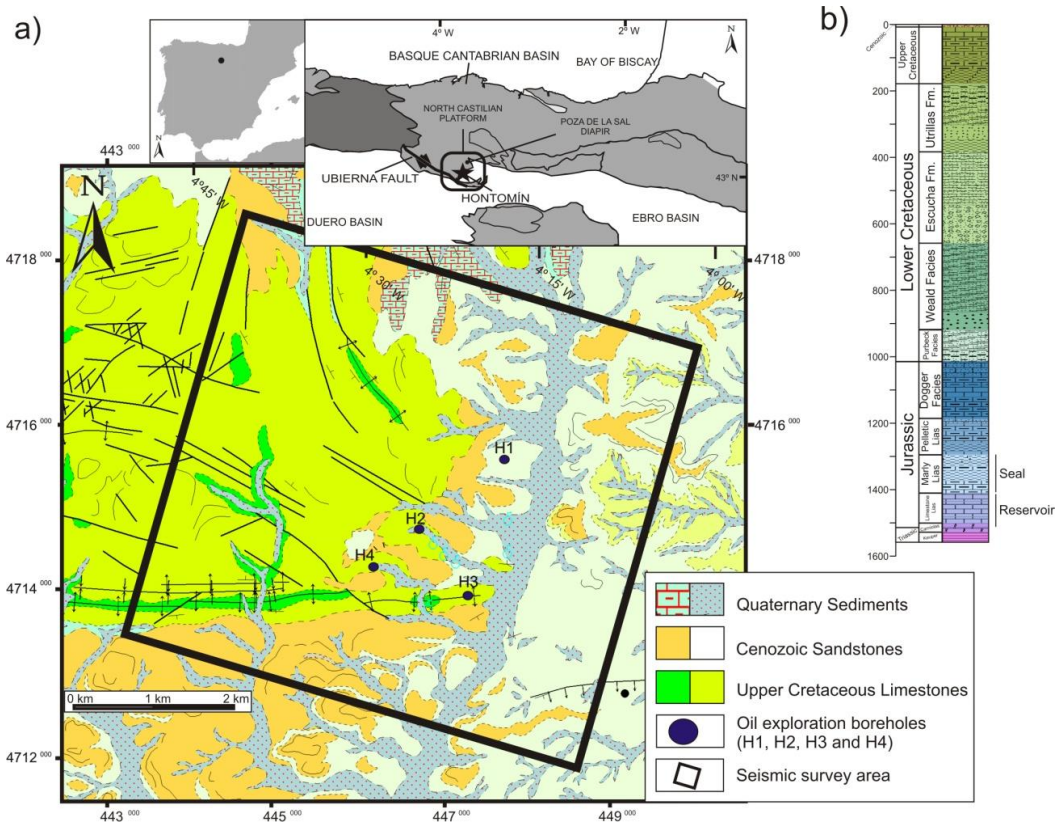


Fig. 1. (a) Location of the study area within the Iberian Peninsula and detail of the main geological features and **(b)** expected stratigraphy in the injection zone based on available seismic and borehole data.

3-D reflection seismic imaging of the Hontomín structure

J. Alcalde et al.

Title Page	
Abstract	Introduction
Conclusions	References
Tables	Figures
◀	▶
◀	▶
Back	Close
Full Screen / Esc	
Printer-friendly Version	
Interactive Discussion	



3-D reflection seismic imaging of the Hontomín structure

J. Alcalde et al.

Title Page

Abstract

Introduction

Conclusions

References

Tables

Figures



Back

Close

Full Screen / Esc

Printer-friendly Version

Interactive Discussion

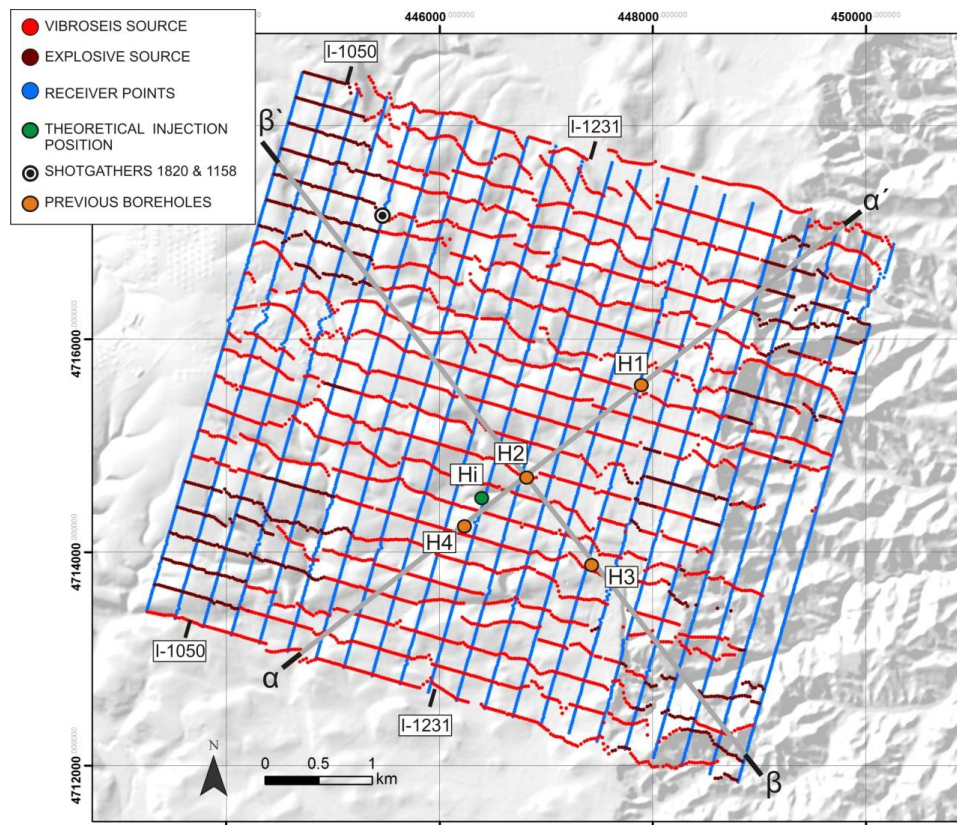


Fig. 2. Map with the position of the elements of the 3-D seismic reflection experiment acquired in Hontomín. Light red points mark the position of Vibroseis source shot points. Deep red points mark the position of the explosive source shot points. Blue points mark the receiver positions. The green circle marks the proposed position for the CO₂ injection borehole. The orange circles mark the position of previous boreholes (drilled for oil exploration).

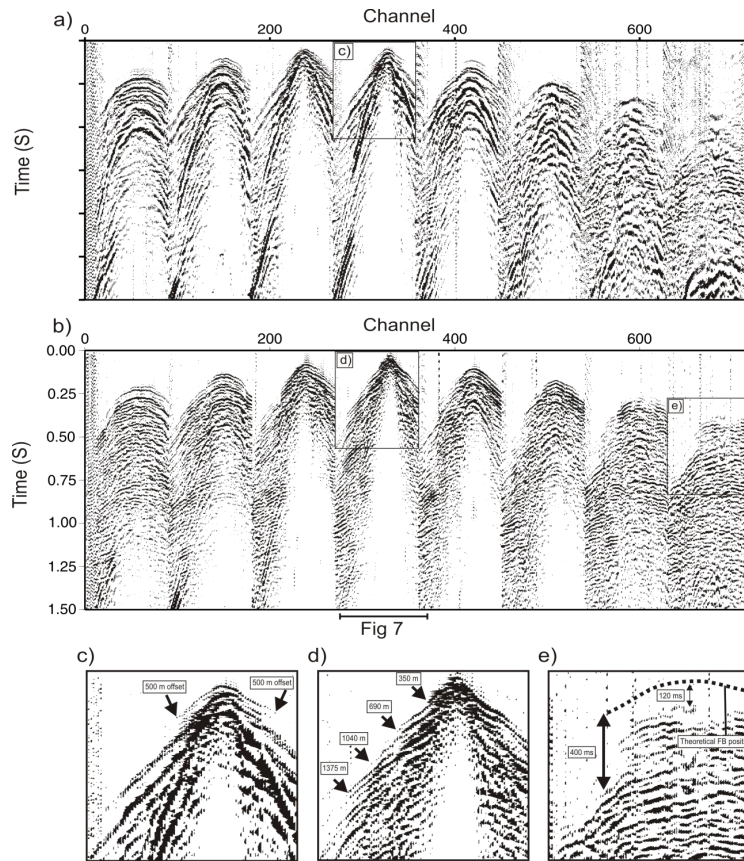


Fig. 3. Raw shot gather 1158, acquired with explosive source **(a)**, and the co-located shot gather 1820, acquired with Vibroseis source **(b)**. Three zooms from different zones of the two shots are shown in **(c)**, **(d)** and **(e)**, with black arrows indicating the observed loss of first arrivals and the resultant shadow zone. The location of shot gathers 1158 and 1820 is marked in Fig. 2.

3-D reflection seismic imaging of the Hontomín structure

J. Alcalde et al.

Title Page	
Abstract	Introduction
Conclusions	References
Tables	Figures
◀	▶
◀	▶
Back	Close
Full Screen / Esc	
Printer-friendly Version	
Interactive Discussion	



3-D reflection seismic imaging of the Hontomín structure

J. Alcalde et al.

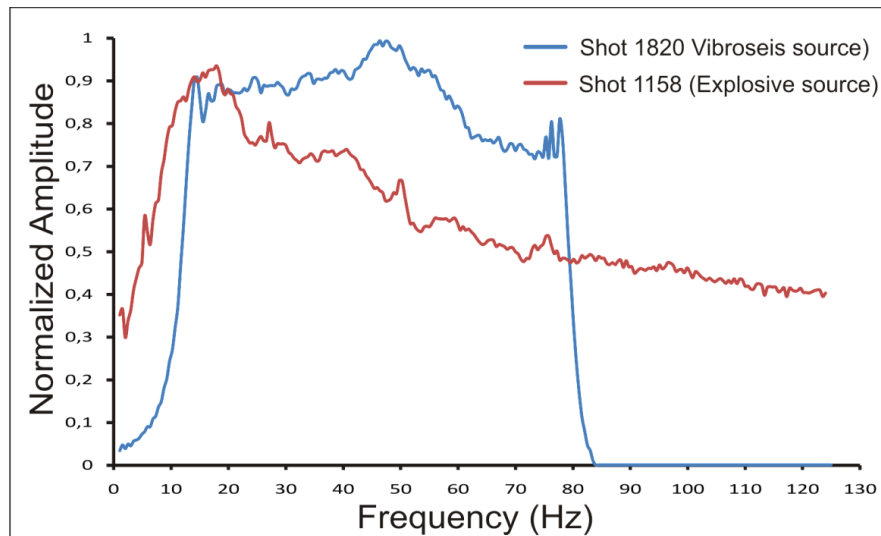


Fig. 4. Frequency spectra of the shot gathers shown in Fig. 3: shot gather 1820, acquired with Vibroseis source (dark grey) and shot gather 1158, acquired with explosive source (light grey).

[Title Page](#)[Abstract](#)[Introduction](#)[Conclusions](#)[References](#)[Tables](#)[Figures](#)[◀](#)[▶](#)[◀](#)[▶](#)[Back](#)[Close](#)[Full Screen / Esc](#)[Printer-friendly Version](#)[Interactive Discussion](#)

**3-D reflection seismic
imaging of the
Hontomín structure**

J. Alcalde et al.

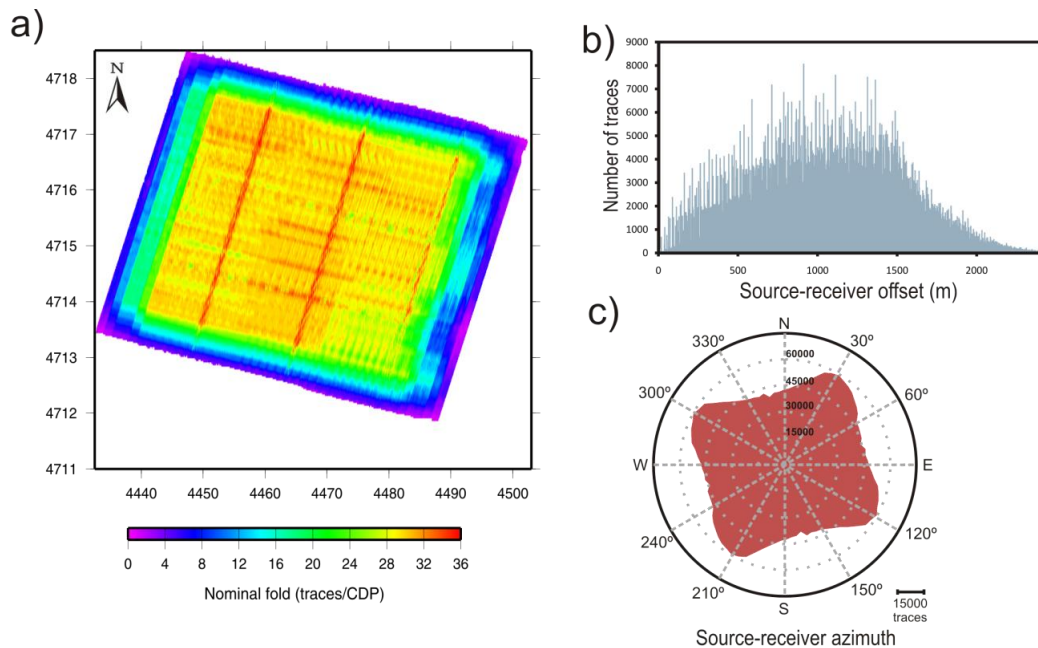


Fig. 5. (a) CDP fold coverage calculated from a CDP bin size of 13 m. (b) Source-receiver offset distribution. (c) Azimuthal coverage of the survey.

[Title Page](#)[Abstract](#)[Introduction](#)[Conclusions](#)[References](#)[Tables](#)[Figures](#)[◀](#)[▶](#)[◀](#)[▶](#)[Back](#)[Close](#)[Full Screen / Esc](#)[Printer-friendly Version](#)[Interactive Discussion](#)

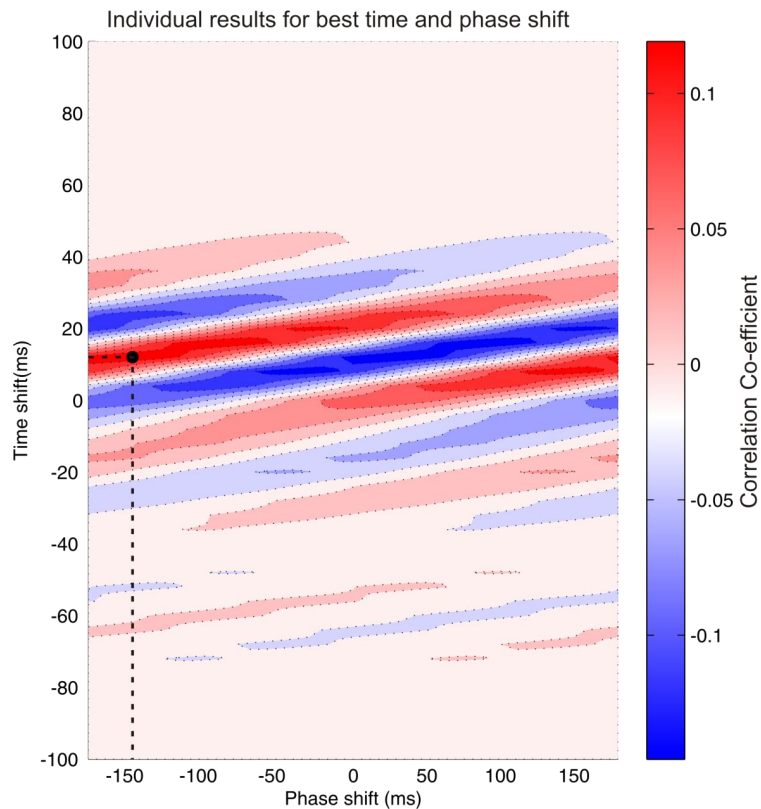


Fig. 6. Plot of the correlation co-efficient vs. time and phase shift applied to the dynamite traces. The color scale shows the stacked correlation co-efficient values for 1080 trace pairs, with red colors indicating strong positive values and blue indicating strong negative values. The optimum parameters of -150° phase shift and 12ms time shift were chosen based on the stacked correlation co-efficients.

3-D reflection seismic imaging of the Hontomín structure

J. Alcalde et al.

Title Page

Abstract

Introduction

Conclusions

References

Tables

Figures

◀

▶

◀

▶

Back

Close

Full Screen / Esc

Printer-friendly Version

Interactive Discussion



3-D reflection seismic
imaging of the
Hontomín structure

J. Alcalde et al.

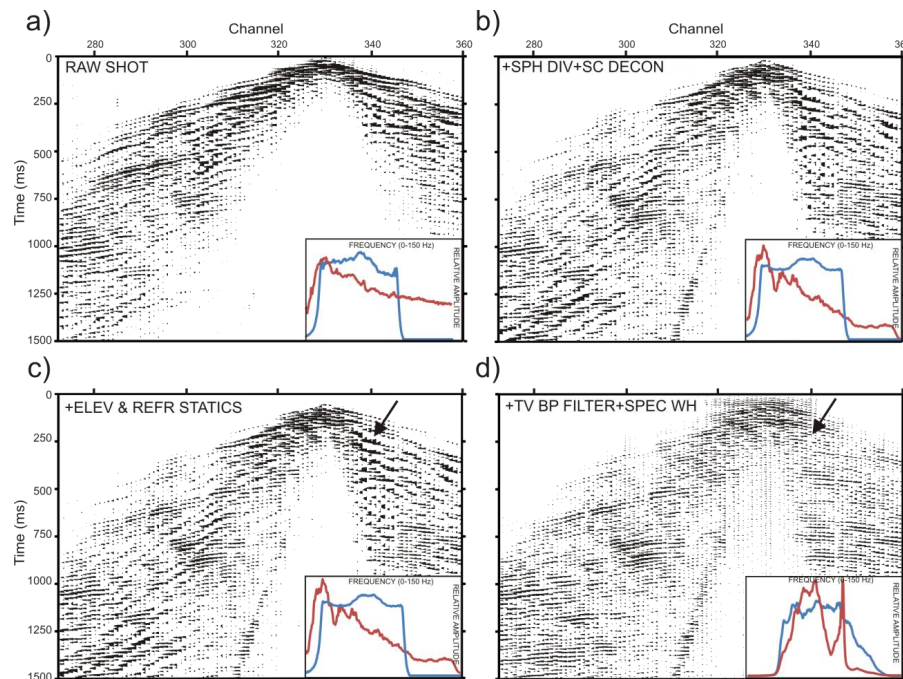


Fig. 7. Closeup of the shot gather 1820 (see also Fig. 3) after different steps in the data processing: **(a)** raw shot; **(b)** same as **(a)** plus spherical divergence and surface consistent deconvolution; **(c)** same as **(b)** plus elevation and refraction statics; and **(d)** same as **(c)** plus time-variant frequency filter and spectral whitening. Each plot also contains a frequency spectrum graph (similar to that of Fig. 4) comparing the amplitudes and frequencies of the shot 1820 (Vibroseis source, dark grey) and 1158 (explosive source, light grey). Note that frequency graphs are shown only for qualitative comparison (values of the frequency graphs are the same as in Fig. 4, not shown here for display purposes).

3-D reflection seismic imaging of the Hontomín structure

J. Alcalde et al.

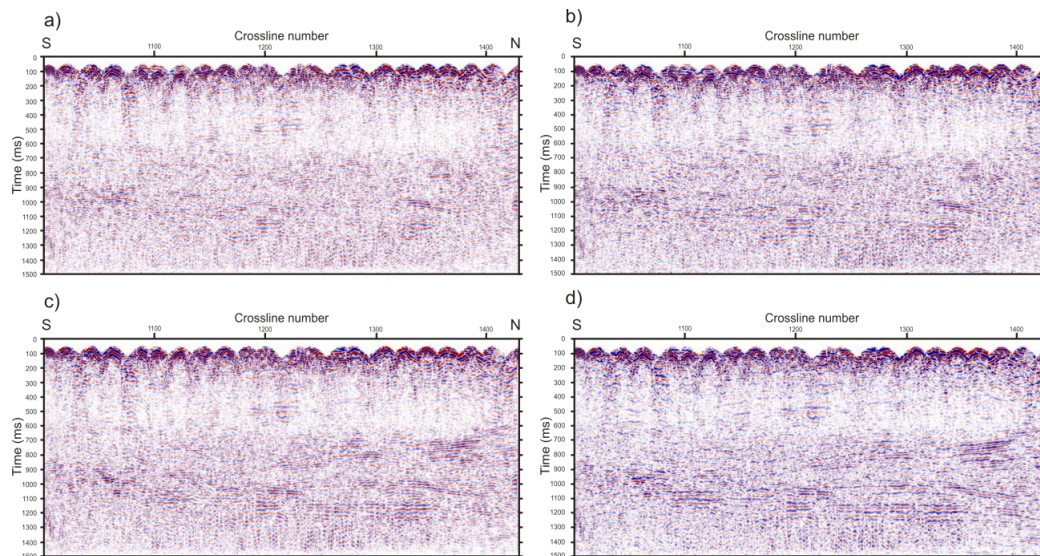


Fig. 8. (a) Raw inline 1050; (b) same as (a) with the source wavelet matching based on time and phase shifting applied; (c) same as (a) with elevation and refraction statics applied; (d) same as (a) with source wavelet matching, elevation and refraction statics applied. The location of inline 1050 is marked in Fig. 2.

3-D reflection seismic imaging of the Hontomín structure

J. Alcalde et al.

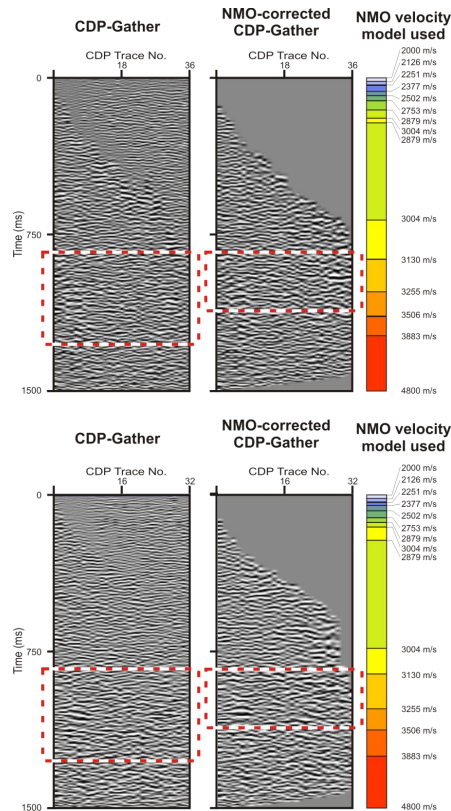


Fig. 9. Example of two CDP-gathers from different areas before and after NMO-correction, and the two NMO velocity models applied in each case. The highlighted boxes mark a reflectivity area whose reflections are not continuous even after a correct NMO correction.

[Title Page](#)
[Abstract](#)
[Introduction](#)
[Conclusions](#)
[References](#)
[Tables](#)
[Figures](#)
[Back](#)
[Close](#)
[Full Screen / Esc](#)
[Printer-friendly Version](#)
[Interactive Discussion](#)

3-D reflection seismic imaging of the Hontomín structure

J. Alcalde et al.

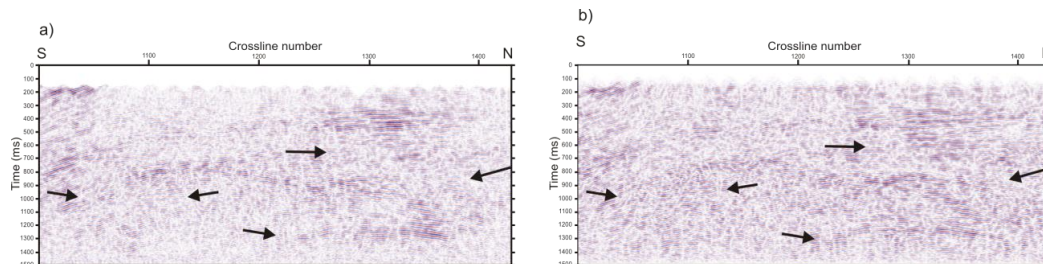


Fig. 10. Unmigrated seismic section from inline 1231 with **(a)** up to processing step 14 (Table 2) applied, and **(b)** same as **(a)** with DMO corrections applied. Note the enhancement of coherence after the application of the DMO (black arrows). The location of inline 1231 is marked in Fig. 2.

Title Page

Abstract

Introduction

Conclusions

References

Tables

Figures

◀

▶

◀

▶

Back

Close

Full Screen / Esc

Printer-friendly Version

Interactive Discussion



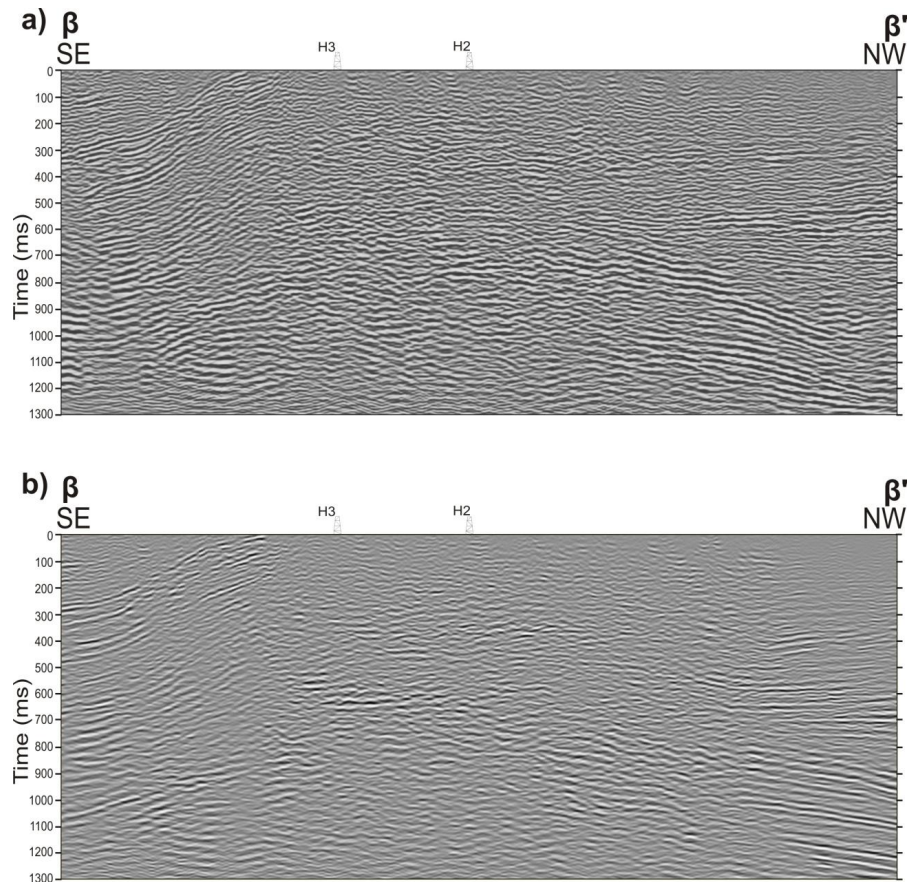


Fig. 11. Section β – β' of the Hontomin dataset, **(a)** processed with Alcalde et al. (2013) processing flow, and **(b)** with the processing flow outlined in Table 2. Location of the β – β' section in Fig. 2.

SED

5, 1575–1614, 2013

3-D reflection seismic imaging of the Hontomín structure

J. Alcalde et al.

Title Page

Abstract

Introduction

Conclusions

References

Tables

Figures

⏪

⏩

◀

▶

Back

Close

Full Screen / Esc

Printer-friendly Version

Interactive Discussion



3-D reflection seismic imaging of the Hontomín structure

J. Alcalde et al.

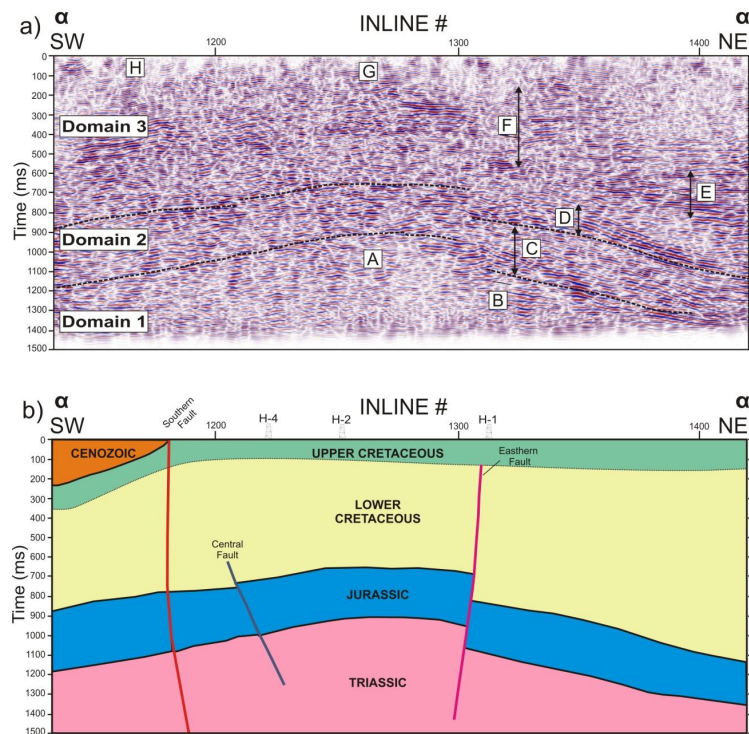


Fig. 12. (a) Migrated section (up to processing step 25 in Table 2) from α - α' section (location in Fig. 2) showing the main seismic facies (A to H) identified, arranged in three domains; and (b) interpretation of section (a), in which five main units have been recognized: Triassic, Jurassic, Lower Cretaceous, Upper Cretaceous and Cenozoic units. Three faults affecting the Jurassic structure have also been interpreted in this section: the Southern fault (red line), the Central fault (dark blue line) and the Eastern fault (magenta line), at inlines 1180, 1225 and 1305, respectively.

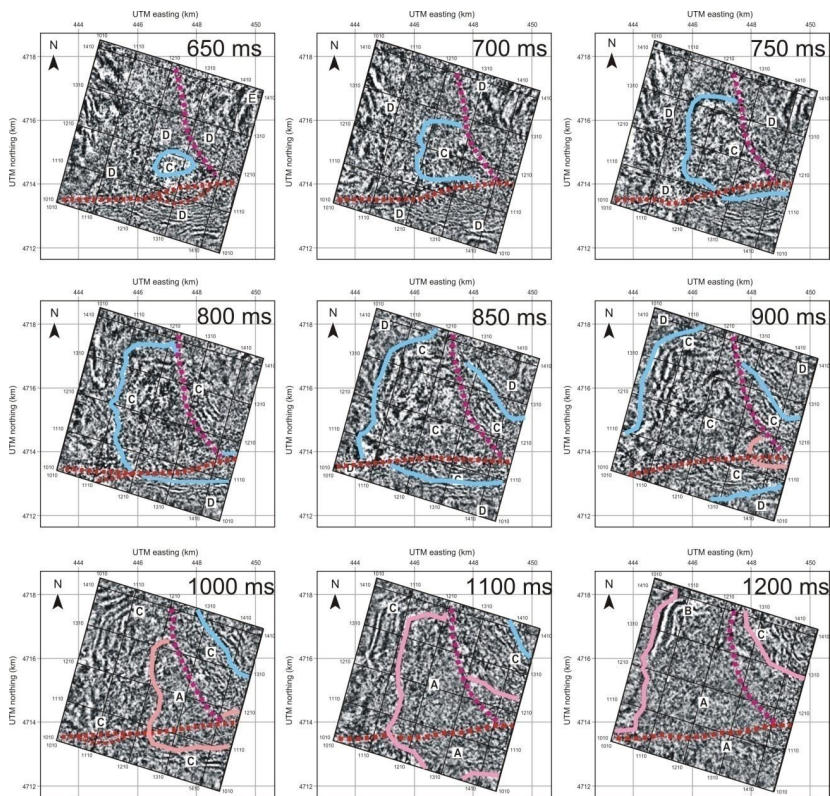


Fig. 13. Time slices from the migrated seismic volume with the different seismic reflection sets (A to H) recognized. The blue line (observed from time slice 900 to 650 ms) represents the top of the Jurassic dome structure (probably the top of the Purbeck Fm.). The pink line represents the base of the Jurassic dome (observed from time slice 1200 to 900 ms). Two faults have been interpreted: the Southern fault (red dashed line) and the Eastern fault (magenta dashed line). Note that certain splits of the Eastern fault have been marked in time slices 1000 and 650 ms.

3-D reflection seismic imaging of the Hontomín structure

J. Alcalde et al.

Title Page	
Abstract	Introduction
Conclusions	References
Tables	Figures
◀	▶
◀	▶
Back	Close
Full Screen / Esc	
Printer-friendly Version	
Interactive Discussion	



3-D reflection seismic imaging of the Hontomín structure

J. Alcalde et al.

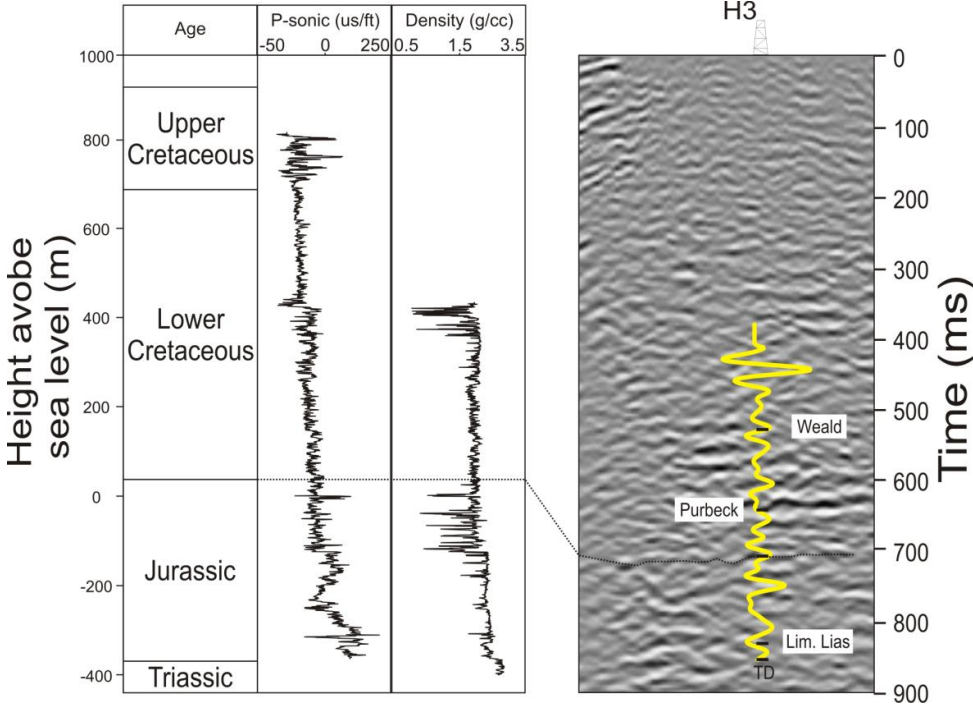


Fig. 14. Sonic and density logs of the H3 well in depth, with their interpreted age. A zero offset synthetic trace, calculated assuming a Ricker wavelet with a peak frequency of 30 Hz is shown (yellow). The time-depth relationship for the synthetic was set manually, due to the lack of check shot data and velocity information of the shallow subsurface. The synthetic is overlain on a portion of the α - α' section (location in Fig. 2). The Jurassic-Lower Cretaceous boundary is correlated with a dotted line. Main seismic events are also labeled in the seismic section.

Discussion Paper | Discussion Paper | Discussion Paper | Discussion Paper | Discussion Paper

Title Page

Abstract

Introduction

Conclusions

References

Tables

Figures

◀

▶

◀

▶

Back

Close

Full Screen / Esc

Printer-friendly Version

Interactive Discussion



3-D reflection seismic imaging of the Hontomín structure

J. Alcalde et al.

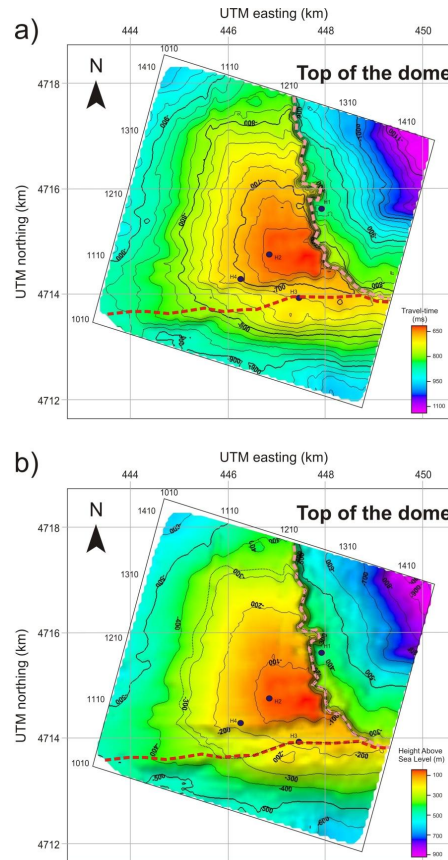


Fig. 15. (a) Time and (b) depth surface (replacement velocity of 3500 m s^{-1}) of the top of the Jurassic featuring the target dome structure, with the approximate position of Southern (red dashed line) and Eastern (pink dashed line) faults.

Title Page

Abstract

Introduction

Conclusions

References

Tables

Figures

⏪

⏩

◀

▶

Back

Close

Full Screen / Esc

Printer-friendly Version

Interactive Discussion

