

This discussion paper is/has been under review for the journal Solid Earth (SE).  
Please refer to the corresponding final paper in SE if available.

# Magnetic signature of large exhumed mantle domains of the Southwest Indian Ridge: results from a deep-tow geophysical survey over 0 to 11 Ma old seafloor

A. Bronner<sup>1</sup>, D. Sauter<sup>1</sup>, M. Munsch<sup>1</sup>, J. Carlut<sup>2</sup>, R. Searle<sup>3</sup>, M. Cannat<sup>2</sup>, and G. Manatschal<sup>1</sup>

<sup>1</sup>Université de Strasbourg, Institut de Physique du Globe de Strasbourg (IPGS) UMR CNRS, Strasbourg, France

<sup>2</sup>Sorbonne Paris Cité Université Paris Diderot, Institut de Physique du Globe de Paris (IPGP) UMR CNRS, Paris, France

<sup>3</sup>Durham University, Department of Earth Sciences, Durham, UK

Received: 2 December 2013 – Accepted: 7 December 2013 – Published: 23 December 2013

Correspondence to: A. Bronner (a.bronner@unistra.fr)

Published by Copernicus Publications on behalf of the European Geosciences Union.

## Magnetic signature of large exhumed mantle domains

A. Bronner et al.

Title Page

Abstract

Introduction

Conclusions

References

Tables

Figures

◀

▶

◀

▶

Back

Close

Full Screen / Esc

Printer-friendly Version

Interactive Discussion



## Abstract

We investigate the magnetic signature of an ultramafic seafloor in the eastern part of the Southwest Indian Ridge (SWIR). There, detachment faulting, continuous over 11 Myrs, exhumed large areas of mantle derived rocks. These exhumed mantle domains occur in the form of a smooth rounded topography with broad ridges locally covered by a thin highly discontinuous volcanic carapace. We present high-resolution data combining deep-tow magnetics, side-scan sonar images and dredged samples collected within two exhumed mantle domains between 62° E and 65° E. We show that, despite an ultraslow spreading rate, volcanic areas within robust magmatic segments are characterized by well defined seafloor spreading anomalies. By contrast, the exhumed mantle domains, including a few thin volcanic patches, reveal a weak and highly variable magnetic pattern. The analysis of the magnetic properties of the dredged samples and careful comparison between the nature of the seafloor, the deep-tow magnetic anomalies and the seafloor equivalent magnetization suggest that the serpentinized peridotites do not carry a sufficiently stable remanent magnetization to produce seafloor spreading magnetic anomalies in exhumed mantle domains.

## 1 Introduction

The eastern part of the ultraslow-spreading Southwest Indian Ridge (SWIR) is among the deepest parts of the oceanic ridge system and represents a melt-poor end-member for this system (Karson et al., 1987; Cannat et al., 1999, 2008). In this region, crustal accretion differs from the conventional seafloor spreading scheme as it occurs at about a  $14 \text{ mm a}^{-1}$  full spreading rate (Patriat et al., 1997) in the form of magmatic but also non-magmatic processes (Cannat et al., 2006). In the past two decades, numerous papers have revealed the presence of exhumed mantle-derived rocks in the oceanic domain (Cannat et al., 1992, 1995) but mechanisms leading to the formation of such a peculiar seafloor remain poorly understood. Although it has been proposed that long-

## SED

5, 2449–2482, 2013

### Magnetic signature of large exhumed mantle domains

A. Bronner et al.

Title Page

Abstract

Introduction

Conclusions

References

Tables

Figures

◀

▶

◀

▶

Back

Close

Full Screen / Esc

Printer-friendly Version

Interactive Discussion



**Magnetic signature of large exhumed mantle domains**

A. Bronner et al.

[Title Page](#)[Abstract](#)[Introduction](#)[Conclusions](#)[References](#)[Tables](#)[Figures](#)[⏪](#)[⏩](#)[◀](#)[▶](#)[Back](#)[Close](#)[Full Screen / Esc](#)[Printer-friendly Version](#)[Interactive Discussion](#)

lived detachment faults could often accommodate 50 % to 70 % (Buck et al., 2005) of the plate separation over  $\sim 3$  Myr, the eastern part of the SWIR is currently the only known oceanic area where continuous mantle exhumation over 11 Myr has been observed (Sauter et al., 2013). There, detachment faulting associated with no or very little volcanic activity seems to be the only process producing the oceanic lithosphere. The resulting seafloor, called “smooth seafloor” (Cannat et al., 2006), is thought to be formed by alternating “flip flop” exhumation faulting (Sauter et al., 2013), a mechanism that has also been proposed to explain the formation of the “zone of exhumed continental mantle” (Reston and McDermott, 2011) observed along the ocean continent transition (OCT) in the Western Iberia margin.

The conventional understanding of seafloor magnetic anomalies is that their source mainly resides in an upper crustal layer of effusive volcanics (e.g. Harrison, 1987). However, studies at slow spreading ridges have also suggested a contribution from other lithologies, such as gabbros and serpentinized peridotites (Pariso and Johnson, 1993; Nazarova, 1994; Oufi et al., 2002). A better understanding of the variability of the amplitude of the magnetic anomalies over exhumed mantle domains is required to assess the validity of kinematic reconstructions at both ultra slow-spreading mid oceanic ridges and magma poor passive margin systems. In this paper, we investigate the magnetic signal over large exhumed mantle domains in the easternmost part of the SWIR. We present results from a deep-tow geological-geophysical survey over two areas between 62 and 65° E combining magnetic data, geological mapping from sidescan sonar images (from Sauter et al., 2013) and dredge sampling. We examine the magnetic signature over a 0 to 11 Ma old smooth seafloor. The aim is to better understand the complexity of the marine magnetic anomalies observed above the serpentinized mantle rocks exhumed at mid oceanic ridges (Sauter et al., 2008). Finally we discuss the implications of our findings for the understanding of exhumed mantle domains at OCTs of magma-poor rifted margins where the origin and significance of broad zones of chaotic magnetic patterns are discussed (Russell and Whitmarsh, 2003; Sibuet et al., 2007; Bronner et al., 2011).

## 2 Geological background

A significant change in the Africa-Antarctica relative plate motion occurred between magnetic anomaly C8 and C6 ( $\sim 24$  Ma ago) resulting in a 50 % decrease in full spreading rate at the SWIR, from slow ( $24 \text{ mma}^{-1}$ ) to ultra-slow ( $14 \text{ mma}^{-1}$ ; Patriat et al., 2008). This ultra slow spreading rate varies only slightly along the 7700 km ridge axis. By contrast, compilations of geophysical and geochemical data along the SWIR reveal large-scale variations of the density and thermal structure of the axial region (e.g. Cannat et al., 1999, 2008; Georgen et al., 2001). Unusually cold mantle temperatures and relatively thin crust at the eastern SWIR, in particular, east of the Melville transform fault ( $60^{\circ}45' \text{ E}$ ), are supported by evidence on axis (Cannat et al., 2008) as well as off-axis (Sauter et al., 2011). An eastward decreasing crustal thickness and/or mantle temperature is inferred from gravity data along the SWIR axis (Cannat et al., 1999). It is further supported by geochemical proxies for the degree of partial melting in the mantle (e.g. average of the composition of the sodium content of axial basalts derived from the axial zone) suggesting a progressive eastward decrease of the ridge melt supply (Meyzen et al., 2003; Seyler et al., 2003; Cannat et al., 2008). Thin crust in the easternmost part of the SWIR (3.7 km average crustal thickness) is also confirmed by seismic data (Minshull et al., 2006).

The easternmost part of the SWIR axial valley displays a ridge segmentation that significantly differs from what is observed at faster spreading ridges such as the Mid-Atlantic Ridge (MAR). High-relief ridge segments ( $> 3000$  m high) are linked by  $> 100$  km long, deep axial sections with almost no volcanic activity (Sauter et al., 2004). The ridge flanks display the widest known areas of seafloor with no evidence of a volcanic upper crustal layer (Cannat et al., 2006). This non-volcanic ocean floor has no equivalent at faster spreading ridges. Cannat et al. (2006) called this seafloor “smooth seafloor” because it occurs in the form of broad ridges with a smooth, rounded topography and lacks the telltale hummocky morphologies of submarine volcanism. This non-volcanic seafloor also lacks the corrugations identified on oceanic core complexes

SED

5, 2449–2482, 2013

### Magnetic signature of large exhumed mantle domains

A. Bronner et al.

Title Page

Abstract

Introduction

Conclusions

References

Tables

Figures

◀

▶

◀

▶

Back

Close

Full Screen / Esc

Printer-friendly Version

Interactive Discussion





---

**Magnetic signature of large exhumed mantle domains**A. Bronner et al.

---

[Title Page](#)[Abstract](#)[Introduction](#)[Conclusions](#)[References](#)[Tables](#)[Figures](#)[Back](#)[Close](#)[Full Screen / Esc](#)[Printer-friendly Version](#)[Interactive Discussion](#)

variable possible attitude of the vehicle. Variations of pitch and roll were obtained by successively hauling in and paying out the wire. The magnetic signal of the vehicle was found to be about 3500 nT and reduced to less than 10 nT after calibration. Magnetic data presented in this paper were only corrected via these calibration parameters; no filtering was applied and the quality of the processing was confirmed through a comparison between upward continued data and sea-surface proton magnetometer profiles (Bronner et al., 2013).

As magnetic data were acquired along uneven altitudes, we used an equivalent source approach (Dampney, 1969) to invert the magnetic profiles and to perform an upward continuation to a constant observation level. We assume that the measured magnetic anomalies are due to uniformly magnetized dipoles that extend infinitely perpendicular to the spreading and profile direction. The so-called “equivalent layer” is draped on the bathymetry 500 m below the seafloor and magnetization directions are assumed to be parallel to the Earth magnetic field ( $-60^\circ$  inclination and  $-30^\circ$  declination in this area of the SWIR). Magnetization of the dipoles is then computed in the spatial domain as a single linear inversion to the distances between dipoles and observation points (Bronner et al., 2013). Once the magnetization is obtained, upward continuation is performed by computing the magnetic field due to the equivalent sources at the desired observation level (Fig. 2). Over the volcanic seafloor we assume that a standard homogeneous 500 m layer accounts for the observed magnetic anomalies (e.g. Gee and Kent, 2007). The inferred magnetization values are thus divided by the assumed dipole spacing and layer thickness to yield units of ampere per meter. Magnetizations above exhumed mantle areas are calculated in the same way, although we have little knowledge about the source layer thickness there. These magnetizations have thus to be taken with care and are only presented as a comparison to the volcanic seafloor. Variations of inverted magnetizations over exhumed mantle domains could either result from changes of intrinsic magnetization or from variability in the source thickness.

---

**Magnetic signature of large exhumed mantle domains**A. Bronner et al.

---

[Title Page](#)[Abstract](#)[Introduction](#)[Conclusions](#)[References](#)[Tables](#)[Figures](#)[⏪](#)[⏩](#)[◀](#)[▶](#)[Back](#)[Close](#)[Full Screen / Esc](#)[Printer-friendly Version](#)[Interactive Discussion](#)

To be consistent, all deep-tow magnetic anomaly profiles displayed in Fig. 2 are upward continued to a constant level of 1200 m below sea level (shallowest depth of the TOBI during the whole survey). 2-D magnetic anomaly profiles are represented above seafloor topography in which geological interpretations from side scan images (from Sauter et al., 2013) are superimposed (Fig. 2). As the profiles are about 6 km apart (width of the TOBI side-scan swath) we do not perform 3-D inversion or magnetic mapping; instead, we calculate magnetizations along profiles and display them as colored strips of arbitrary width superimposed on the bathymetry (Fig. 3). Identification of magnetic anomalies are based on Sauter et al. (2008).

The TOBI 30 kHz side-scan sonar provides 3 m resolution acoustic images of the seafloor. Interpretation of the reflectivity combined with results from dredges leads to the distinction between three types of seafloor (see Sauter et al., 2013): (1) volcanic seafloor, corresponding to highly reflective surfaces composed of volcanic cones (< 200 m across) and sinuous scarps characteristic of the presence of pillow lava flows, (2) smooth seafloor, corresponding to smooth and homogeneous topography associated with low and uniform reflectivity and, (3) corrugated seafloor (Cannat et al., 2006) associated with striations comparable to the slip surfaces that are commonly observed at oceanic core complexes of the MAR (Cann et al., 1997). As the sedimentary cover is limited to small patches in this region, the nature of the seafloor below is extrapolated from the surrounding exposed rocks.

#### 4 Magnetic signal over volcanic seafloor: a seafloor spreading model

Profile 2–5 was acquired between magnetic anomaly C3A on each flank (see Fig. 1) above exclusively volcanic seafloor associated with relatively thick crust suggested by low Residual Mantle Bouguer Anomalies (RMBA < 20 mGal; Cannat et al., 2006). We use it as a reference to calibrate the spreading rate and identify the main polarity reversals. The inverted magnetization values reach around  $10 \text{ A m}^{-1}$  at the axis (resulting in a  $\sim 500 \text{ nT}$  amplitude for the central anomaly, Fig. 2) and  $5 \text{ A m}^{-1}$  off-axis. These

values are in agreement with previous observations in this area (Searle and Bralee, 2007) and in another section of the SWIR near 58° E (Hosford et al., 2003). Despite the ultra-slow spreading rate, the main magnetic blocks are well resolved (Figs. 2 and 3) and associated with relatively strong magnetic contacts.

5 Seafloor spreading anomalies are modeled using MODMAG (Mendel et al., 2005). A  $14 \text{ mma}^{-1}$  uniform full spreading rate associated with a 500 m thick source layer draped over the topography and a  $10 \text{ Am}^{-1}$  magnetization on-axis decreasing to  $5 \text{ Am}^{-1}$  off-axis enables to reproduce the main magnetic anomalies observed over the volcanic crust at profile 2–5 (Fig. 2). At such ultra-slow spreading rate the identification of the seafloor spreading anomalies is more difficult than for faster spreading ridges because reverse and normal polarity blocks may overlap. Therefore, a 0.7 contamination coefficient (Tisseau and Patriat, 1981) is used as a good compromise to both account for contamination between adjacent magnetic blocks with different polarity and preserve the small wavelength anomalies such as anomaly C2 (Fig. 2; profile 15 2–5). There is a reasonable fit between the observed magnetic anomaly profile and this forward model regarding the central Brunhes anomaly while southern anomaly C2A and northern anomaly C3A are in agreement with previous identifications on sea surface magnetic anomaly profiles (Sauter et al., 2008). Anomaly C2A is not clearly identified on the northern flank. This is consistent with observations from Searle and 20 Bralee (2007) who showed that this polarity reversal was either smaller than predicted or missing in the northern flank in this area. We also suggest that anomaly C2 could account for the two small wavelength events observed on both sides of the central anomaly.

SED

5, 2449–2482, 2013

## Magnetic signature of large exhumed mantle domains

A. Bronner et al.

Title Page

Abstract

Introduction

Conclusions

References

Tables

Figures

⏪

⏩

◀

▶

Back

Close

Full Screen / Esc

Printer-friendly Version

Interactive Discussion





## 5 Magnetic signal over exhumed serpentinized mantle

### 5.1 The western corridor

The western corridor extends between magnetic anomalies C3A (Cannat et al., 2006), and includes two  $\sim 100$  km long north-south magnetic profiles 6 km apart (Profiles 1–6 and 1–7; Fig. 1) and one short ( $\sim 30$  km) profile that does not cross the axis (Profile 1–5; Fig. 1). The magnetic data of the east-west profiles are not presented in this paper because the 2-D assumption used for the upward continuation and the computation of the magnetization is unreliable in that case. Therefore, we only use the side scan images from these east-west lines to constrain the nature of the seafloor. Careful analysis of bathymetry, side scan images and dredge samples suggests that the seafloor in this corridor is exclusively made of wide serpentinized peridotite ridges topped by thin ( $< 100$ – $200$  m thick) volcanic patches (Sauter et al., 2013; Figs. 2 and 3). The axial valley is marked by an unconventional morphology comprising a 2000 m high peridotite ridge, called “Cannibal Ridge” that emerges from the axial domain (Fig. 2).

The axial magnetic anomaly is hardly visible on profile 1–6 (Fig. 2) whereas a higher ( $\sim 300$  nT) amplitude anomaly is observed on profile 1–7 at the top of the Cannibal Ridge. Similarly, few kilometers north of the ridge axis, a  $\sim 150$  nT amplitude magnetic anomaly that is recorded on profile 1–6 is absent from profile 1–7. Only one anomaly previously picked as anomaly C2A (Sauter et al., 2008) and located on top of the first ridge south of the axis is continuous between the two profiles (Fig. 2). On the inverted magnetization profiles (Figs. 3 and 4), an area of high magnetization (up to  $10 \text{ A m}^{-1}$ ) is located on the north flank of the Cannibal Ridge and is identified as the axial magnetic high (profile 1–7). To the east, on profile 1–6, the same feature is shifted northward to the deeper part of the axial valley. Off-axis, the magnetization is weak and associated with smooth magnetic contacts.

SED

5, 2449–2482, 2013

## Magnetic signature of large exhumed mantle domains

A. Bronner et al.

Title Page

Abstract

Introduction

Conclusions

References

Tables

Figures

◀

▶

◀

▶

Back

Close

Full Screen / Esc

Printer-friendly Version

Interactive Discussion



## 5.2 The eastern corridor

The eastern corridor (profiles 2–1, 2–2 and 2–3) shows a more complex morphological structure. It is at the transition from an exclusively volcanic seafloor in the west to a wide exhumed mantle domain in the East. It is characterized by a series of broad rounded serpentinitized peridotite ridges south of the axial valley, whereas a shallower and flatter topography prevails to the north. The northern end of the survey (near anomaly 5, north of 27.37° S, Figs. 2–4) shows 2 corrugated surfaces where the recovery of more frequent gabbroic rocks (Sauter et al., 2013) associated with a low RMBA (< 20mGal, Sauter et al., 2008) suggest more robust magmatic activity. Apart from this particular area and some thin (less than 300 m thick), small, volcanic patches observed within the axial domain and at the top of some serpentinitized peridotite ridges, the eastern corridor is formed almost exclusively of smooth exhumed mantle surfaces associated with very little magmatic supply. Moreover, evidence was found that the ~ 2400 m high, 25° south dipping northern axial valley wall corresponds to the footwall of a recent large detachment fault cutting the earlier sedimented smooth inner floor and accommodating the plate separation (Sauter et al., 2013).

What has been interpreted as the central magnetic anomaly (Sauter et al., 2008) goes from a very low magnetic anomaly (< 100 nT amplitude) above the detachment footwall in the west (profiles 2–3 and 2–2) to a slightly stronger anomaly ~ 250 nT in the deeper part of the axial valley to the east (profile 2–1; Figs. 2 and 3). Similarly, on the south flank, the anomaly picked as C2A on profile 2–1 is shifted 10 km north on profile 2–3 and is almost missing from the profile 2–2. On the conjugate plate to the north, in between the ridge axis and anomaly 5, the magnetic signal is also flat with no clear seafloor spreading anomalies and no lateral continuity; only anomaly C5 seems resolvable and quite continuous. The inverted magnetization profiles (Fig. 3) show a similar pattern to those from the eastern corridor: a very flat magnetization associated with smooth magnetic contacts over the exhumed mantle areas. Only anomaly C5 and very local magnetization highs, such as north of the ridge axis on profile 2–3, are observed.

## SED

5, 2449–2482, 2013

### Magnetic signature of large exhumed mantle domains

A. Bronner et al.

Title Page

Abstract

Introduction

Conclusions

References

Tables

Figures

◀

▶

◀

▶

Back

Close

Full Screen / Esc

Printer-friendly Version

Interactive Discussion



### 5.3 Magnetic structure of the different types of seafloor

At the ridge axis, the magnetization of the exhumed mantle is generally low ( $< 5 \text{ A m}^{-1}$ ), but it can be locally significant (e.g. up to  $10 \text{ A m}^{-1}$  on profile 1–7) and shows ill-defined magnetic contrasts compared to the volcanic areas. No clear wide central block is observed in the western corridor as large magnetized blocks are alternatively observed above the Cannibal Ridge (profile 1–7; Fig. 4) or in the deeper part of the axial valley (profile 1–6; Fig. 4). Similarly, the central block is virtually absent within the eastern corridor; a small anomaly with slightly larger magnetizations (up to  $8 \text{ A m}^{-1}$ ) is shifting from the southern (profile 2–1; Fig. 4) to the northern axial valley wall (profile 2–3; Fig. 4). Off-axis, the exhumed mantle surfaces show no evidence for volcanic material (e.g. north side of the profile 2–2; Fig. 4) and are characterized by low magnetizations (mostly  $< 2 \text{ A m}^{-1}$ ) without any clear continuous magnetic anomaly from one profile to the other.

Apart from profile 2–5 showing large amplitude magnetizations, locally higher magnetization cannot be associated with volcanic seafloor both at the axis and on the flanks. The presence of extrusive rocks may, in some places, account for a higher magnetization but there is no unequivocal link. For instance, although a lava flow is identified just north of the Cannibal Ridge on both profiles 1–7 and 1–6 (Fig. 2), larger magnetization values are only observed on the eastern profile (profile 1–6; Figs. 3 and 4). Similarly, although relatively higher magnetizations (up to  $10 \text{ A m}^{-1}$ ) may be related to the proximity of the small volcanic patch north of the axial valley wall (profile 2–3), the few volcanic patches observed south of the axis of the western corridor do not produce any significant magnetization ( $< \pm 2 \text{ A m}^{-1}$  from profile 2–2 and 2–3, Fig. 4)

The corrugated surfaces observed at the northern end of the profiles 2–2 and 2–3 are associated with stronger magnetizations (up to  $10 \text{ A m}^{-1}$ ) and a slightly continuous magnetic anomaly identified as the anomaly C5.

SED

5, 2449–2482, 2013

## Magnetic signature of large exhumed mantle domains

A. Bronner et al.

Title Page

Abstract

Introduction

Conclusions

References

Tables

Figures

◀

▶

◀

▶

Back

Close

Full Screen / Esc

Printer-friendly Version

Interactive Discussion



## 6 Magnetic properties of the dredged samples

In order to have a better understanding of the magnetic behavior of the different rock bodies in the area natural remanent magnetization (NRM) and magnetic susceptibility ( $K$ ) were measured on 12 basalt, 29 peridotite and 10 gabbro samples dredged in the two survey areas (Fig. 1 and Table 1). The magnetic susceptibility is an indication of the ability of a rock sample to acquired an induce magnetization whereas NRM is a direct measurement of thermoremanence. The susceptibility is plotted vs the remanence for all measured samples (Fig. 5a). Two distinct trends are observed, a basalt trend with samples having low susceptibilities even when they exhibits high NRMs and a peridotite trend regrouping samples having susceptibilities increasing significantly with increasing NRMs (Fig. 5a). Indeed some dredged peridotites have a NRM comparable to basaltic rocks (up to  $8 \text{ A m}^{-1}$ ), but for peridotites these high values are always associated with high susceptibility ( $K$  up to  $0.07 \text{ SI}$ ). Gabbros tend to fall in the peridotite trend with some exception. The Koenigsberger ratio is expressed as  $Q = \text{NRM}/K \cdot H$  (with  $H$  the magnetic field strength at the site) and is indicative of the balance between induced vs remanent magnetization for each samples. Results are plotted on Fig. 5b, lower Koenigsberger ratios are observed for peridotites and gabbros, half of these samples have a Koenigsberger ratio below 1 indicating their magnetization is dominantly induced, this result is in agreement with previous results at the MAR (Oufi et al., 2002). Basalt show ratio always above 1, with a mean of  $\sim 40$ , indicating the strong dominance of remanent over induced magnetization for these samples. Beyond these sharp, lithological based, magnetic differences it is difficult to draw any finer scale magnetic behavior which could be linked to the magnetic profile. First, both NRMs and susceptibilities are highly variable even for a set of samples with the same lithology collected within the same dredge (see Table 1). Features in the magnetic profile are thus not easily related to rock magnetic measurements. As an example the strongest magnetized peridotite samples (i.e. with the higher total magnetization) were recovered within a short lateral distance of each other in the middle of the north side of profiles

### Magnetic signature of large exhumed mantle domains

A. Bronner et al.

Title Page

Abstract

Introduction

Conclusions

References

Tables

Figures



Back

Close

Full Screen / Esc

Printer-friendly Version

Interactive Discussion



2–2 and 2–3 (Fig. 3) However, such a high magnetization is not recorded by the deep-tow magnetic data (Fig. 3), suggesting that either the magnetized source layer is thin or that high magnetizations occur only punctually, suggesting that such magnetization are limited to small areas that cannot be detected by the deep-tow magnetometer.

## 7 Forward modeling

Seafloor spreading magnetic anomalies were identified along sea surface profiles over domains that lack a volcanic upper crustal layer in the easternmost part of the SWIR (Sauter et al., 2008) suggesting that other sources may play a significant role in preserving the Earth magnetic field polarity. Along both the MAR and the SWIR serpentinized peridotites have been suspected to carry “more positive” magnetization amplitudes in areas of thin crust (Hosford et al., 2003; Tucholke et al., 2008). This observation is supported by the Koenigsberger ratios of the SWIR serpentinized peridotites which is often less than 1. This shows that, unlike basaltic rocks, induced magnetization may be significant for these rocks. We therefore perform two different forward modeling, one based on a 500 m thick basaltic layer with a dominantly remanent magnetization thus preserving the Earth magnetic field polarity and another based on an induced magnetized layer, in order to test the contribution of volcanic rocks vs. serpentinized peridotites. We disregard the contribution of a lower crustal layer made of gabbroic rocks that is volumetrically scarce in the samples dredged within the exhumed mantle domains.

### 7.1 Seafloor spreading model

The seafloor spreading model calibrated on the volcanic seafloor (line 2–5) was compared to the magnetic profiles acquired above the exhumed mantle domains of both eastern and western corridors. In the absence of a high amplitude central anomaly, the axial Brunhes block was centered either at the bathymetric axis or underneath the

SED

5, 2449–2482, 2013

## Magnetic signature of large exhumed mantle domains

A. Bronner et al.

Title Page

Abstract

Introduction

Conclusions

References

Tables

Figures

◀

▶

◀

▶

Back

Close

Full Screen / Esc

Printer-friendly Version

Interactive Discussion





et al. (2008) is well marked on both profiles. In the eastern corridors, where the areas of flat topography correspond to a flat observed magnetic field, the data are slightly comparable to the model except in the axial domain. Over the volcanic seafloor, the synthetic magnetic anomaly fits poorly the observed magnetic anomaly profile 2–5 in both axis and off-axis regions.

## 8 Depth of the magnetic sources

Usually, sources for marine magnetic anomalies are considered to be located in the extrusive upper part of the oceanic crust within a layer of constant thickness. Following Bronner et al. (2013), we use the equivalent layer method for the estimation of the thickness of this layer. Dampney (1969) has shown that the equivalent layer should be located within a certain range of depth below the measurement surface for avoiding both the aliasing effect in the computed field and an ill-conditioned inversion matrix. In our case, we use the top seafloor as an upper bound because the altitude of the TOBI largely exceeds the data spacing ( $\sim 10$  m) and we iteratively increase the depth of the equivalent layer until (1) the loss of short wavelength in both computed field and magnetization, and/or (2) the appearance of oscillations in the solutions. Indeed, an equivalent source layer located too far below the measurement surface makes the matrix representing the distance between the equivalent sources and the observation points ill conditioned and the associated solution unreliable (Dampney, 1969). Therefore, we assume that this lower bound provides a first indication relative to the maximum depth of the “true” causative sources (i.e. the source layer thickness).

Applying this method to our survey, in the case of the “volcanic” profile (line 2–5), the whole frequency content of the measured field was well retrieved for dipoles located around 500 m below the seafloor (Fig. 6). Shallower and deeper solutions lead respectively to the appearance of high frequency oscillations in the computed field and loss of resolution in the computed field and magnetization solution. At the opposite, for the profiles acquired above the exhumed mantle domains (e.g. profile 2–2; Fig. 6), the

## Magnetic signature of large exhumed mantle domains

A. Bronner et al.

Title Page

Abstract

Introduction

Conclusions

References

Tables

Figures

◀

▶

◀

▶

Back

Close

Full Screen / Esc

Printer-friendly Version

Interactive Discussion







**Magnetic signature of large exhumed mantle domains**

A. Bronner et al.

Title Page

Abstract

Introduction

Conclusions

References

Tables

Figures

◀

▶

◀

▶

Back

Close

Full Screen / Esc

Printer-friendly Version

Interactive Discussion



these accretion modes are responsible for the complexity of the magnetic signal in this area. Short reversals such as C3 or C2A ( $\sim 0.5$  My) are detectable only above thick volcanic crust associated with minor tectonic activity. Therefore, the identification of magnetic anomalies from sea surface magnetic profiles above smooth seafloor was mainly extrapolated from the surrounding volcanic areas (Sauter et al., 2008). However, the comparison of mapping of exhumed mantle domains from multibeam bathymetric data at 150 m resolution and from TOBI images at  $< 10$  m resolution reveals that sources of some of these magnetic anomalies identified along sea surface profiles were erroneously attributed to volcanic seafloor by Sauter et al. (2008) and may thus not be related to polarity changes of the Earth magnetic field.

We are now able, with the high-resolution deep-tow data, to provide a precise analysis of the magnetic signal with the respect to the geological nature of the seafloor. We confirm, as observed by Searle and Bralee (2007) in this region, that despite an ultra-slow spreading rate, marine magnetic anomalies are still well identifiable above volcanic seafloor. However, these identifications are much more difficult above the exhumed mantle domains where the magnetic pattern is highly variable from one profile to another. This is well illustrated in our studied corridors where closely spaced magnetic profiles show a very heterogeneous magnetic signal. Except for anomaly 5, a simple seafloor-spreading model (calibrated on line 2–5) does not fit the magnetic anomaly pattern, even for the central anomaly (Fig. 2). Moreover, although the exhumed mantle domains are expected to be formed by asymmetrical detachment faulting, there is no evidence for lateral discontinuity between exhumed mantle areas and symmetrically accreted volcanic crust for which ages of accretion are quite well constrained (e.g. Chrons younger than C5; Searle and Bralee, 2007). We thus suggest that both mantle exhumation and volcanic accretion are almost contemporary leading to a reasonable lateral continuity (in terms of age) between different types of seafloor.

## 9.2 Contribution of mantle derived rocks

The ferromagnetic behavior of serpentinized peridotites has been shown to be directly linked to the serpentinization process (Dunlop and Prévot, 1982). Magnetite is formed during serpentinization from the interaction between fluids and ferromagnesian minerals such as olivine and pyroxene. It has been suggested that a high degree of serpentinization (above  $\sim 75\%$ ) is necessary for the acquisition of both significant susceptibility and NRM (Oufi et al., 2002). However, highly variable NRMs are observed from one ODP site to another and also between samples drilled in a single ODP Hole (Oufi et al., 2002). In our study, a similar magnetic behavior is observed for the dredged peridotites. Values of NRM and susceptibility can be significant but are highly heterogeneous. The susceptibilities and NRM values in our dredged samples fall in the lower range of values reported for drilled abyssal peridotites (Oufi et al., 2002). Nevertheless, our samples show similar Koenigsberger ratios to these of drilled peridotites and are strictly inferior to those expected for the extrusive upper layer of the oceanic crust (e.g.  $\sim 50$  to 300; Marshall and Cox, 1971). Although peridotites outcropping at the seafloor are subject to low-temperature alteration, we consider that the magnetic properties of the dredged peridotites are representative of a magnetic source layer in the exhumed mantle domains. We suggest that the high variability in NRM intensity combined with the large range of susceptibility and low Koenigsberger ratio make this layer of serpentinized peridotite magnetically weak and variable.

The presence of such layer is confirmed by the high-resolution deep-tow profiles, which display highly variable magnetic pattern from one profile to another, even where they are closely spaced. The magnetic anomalies observed above exhumed mantle are weak ( $< 100$  nT), and lack short wavelength anomalies, suggesting deeper magnetic sources than in the volcanic seafloor. Although it is possible to reproduce some magnetic pattern using a induced magnetic layer, the whole magnetic signal is not retrieved, especially within the axial domain. Similarly, the spreading model does not fit

SED

5, 2449–2482, 2013

### Magnetic signature of large exhumed mantle domains

A. Bronner et al.

Title Page

Abstract

Introduction

Conclusions

References

Tables

Figures

◀

▶

◀

▶

Back

Close

Full Screen / Esc

Printer-friendly Version

Interactive Discussion



the observed data. It is thus likely that the source combine both induced and remanent magnetization and vary from one local area to another.

Furthermore, in the western and more magmatic part of the SWIR (54–56° E), a significant along-axis decrease in magnetization produces the disappearance of the magnetic reversal patterns in the deepest parts of ridge discontinuities (Sauter et al., 2004). This observation was linked to the thinning of the upper part of the oceanic crust due to a decreasing magmatic budget toward the segment ends. It has also been shown, at the MAR (13–15° N), within a highly complex accretion context combining detachment faulting and freshly erupted seafloor, that the magnetic pattern could be significant in amplitude but highly heterogeneous on a scale of  $\sim 5$  km (Mallows and Searle, 2012) leading to difficulties in the identification of the spreading anomalies, even for the large Brunhes central block. This further suggests that a sufficiently homogeneous upper crust is required to produce well marked marine magnetic anomalies, and that in the absence of this main magnetic source made of extrusive (and perhaps intrusive material), exhumed serpentized peridotites are not sufficiently uniform magnetic sources to produce undisputable seafloor spreading magnetic anomalies.

### 9.3 Corrugated seafloor and the magnetic signal

A corrugated surface is observed below the identified anomaly C5 toward the north end of profiles 2–2 and 2–3 in the eastern corridor. This area is strongly magnetized (up to  $10 \text{ Am}^{-1}$ ; Figs. 2 and 3) and displays high amplitude magnetic anomaly up to 450 nT. This corrugated surface is surrounded by lineated volcanic terrains and the conjugate anomaly C5, on the opposite flank, was identified over well established volcanic crust. This observation, together with a frequent recovery of gabbro in this area (Sauter et al., 2013), suggests that the anomaly C5 was emplaced in a more robust magmatic accretion context, before or just at the onset of continuous mantle exhumation. We thus speculate that in this particular area the magnetization is carried by extrusive or intrusive material rather than peridotites.

## Magnetic signature of large exhumed mantle domains

A. Bronner et al.

Title Page

Abstract

Introduction

Conclusions

References

Tables

Figures



Back

Close

Full Screen / Esc

Printer-friendly Version

Interactive Discussion



## 9.4 Volcanic seafloor and the magnetic signal

Some small volcanic patches have been identified respectively just north of the axial valley of the western corridor and within the axial region of the eastern corridor (Fig. 4). It is not clear whether this extrusive material always accounts for higher magnetization than over the smooth, exhumed mantle seafloor. The magnetic data rather confirm the interpretation of Sauter et al. (2013) based on deep-tow sonar images that these volcanics are very thin and discontinuous flows, not exceeding a hundred meters of thickness, and thus do not correspond to large enough sources to be identified by the deep-tow magnetometer.

## 9.5 Marine magnetic anomalies at oct

Mantle exhumation is one of the proposed mechanisms responsible for the formation of the transitional domains at magma poor rifted continental margins where serpentinized mantle-derived rocks have been drilled (Tucholke and Sibuet, 2007). Sibuet et al. (2007) proposed that a strong magnetization (up to  $9 \text{ A m}^{-1}$ ) can be produced by the serpentinization of a 2 to 3 km thick fractured layer, within the root of an active detachment fault at an embryonic spreading center. Based on NRM intensity measured in ODP holes at the Iberia margin, these authors argued that this first serpentinization phase is sufficient to preserve the polarity of the ambient magnetic field. They suggest that only the upper ten meters below the seafloor is affected by cold-water alteration that produces incoherent magnetic properties. Like on the SWIR, the exhumed mantle domains of the Iberia-Newfoundland margins are characterized by a weak and ill-defined magnetic signal. At these margins, only the seaward termination of the exhumed mantle domain is associated with a slightly linear and high amplitude (up to 1000 nT) magnetic anomaly (“J anomaly”). This anomaly was interpreted as the end of the *M* sequence of spreading anomalies and its amplitude was explained by a strongly serpentinized crust (Srivastava et al., 2000).

SED

5, 2449–2482, 2013

## Magnetic signature of large exhumed mantle domains

A. Bronner et al.

Title Page

Abstract

Introduction

Conclusions

References

Tables

Figures

◀

▶

◀

▶

Back

Close

Full Screen / Esc

Printer-friendly Version

Interactive Discussion



## Magnetic signature of large exhumed mantle domains

A. Bronner et al.

Title Page

Abstract

Introduction

Conclusions

References

Tables

Figures

◀

▶

◀

▶

Back

Close

Full Screen / Esc

Printer-friendly Version

Interactive Discussion



No clear seafloor spreading anomaly is observed over the exhumed mantle areas of the SWIR, neither where active detachment faulting is identified nor on the flanks. This leads to the conclusion that the serpentinization process is not sufficiently homogeneous to produce stable large remanent magnetization. We suggest that the heterogeneous magnetization of the serpentinized peridotites is strongly depending on the fluid-rock interactions, the temperature, the mineral composition and the tectonic context. Therefore, in view of the low magnetization of the young ( $< 11$  Ma) serpentinized rock at the SWIR, it is unlikely that strong magnetic anomalies could be related solely to serpentinization; this would be even more true at  $> 100$  Ma old OCTs. This instead supports the hypotheses that (1) intrusive or extrusive material is required (Bronner et al., 2011; Russell and Whitmarsh, 2003) to account for a significant magnetic signal in the exhumed mantle domains of OCTs and that (2) the interpretation of this signal as resulting from seafloor spreading is precluded in the absence of a homogeneous and well established upper oceanic crust. Consequently, the kinematic reconstructions of magma poor passive margins using weak anomalies identified over exhumed mantle domains need to be taken with caution.

## 10 Conclusions

We have investigated the magnetic structure of newly discovered large exhumed mantle domains of the SWIR (Sauter et al., 2013) combining high resolution side scan sonar images, deep-tow magnetic data and results from dredge sampling. We show that the seafloor spreading magnetic pattern disappears from the volcanic seafloor toward the exhumed mantle domains. Forward modeling allows a reasonable fit to the observed magnetic anomalies over the volcanic seafloor. However, the lack of a central magnetic anomaly and the highly heterogeneous and weak magnetic pattern observed above exhumed mantle-derived rocks prevents any identification of polarity reversals. Moreover, analysis of the magnetic properties of the dredge samples shows that serpentinized peridotites as well as gabbros are highly variable magnetic sources. We conclude that

the serpentinization process is not sufficiently homogeneous to produce a significant stable magnetization at the scale of the exhumed mantle domains of the SWIR. We further suggest that a homogenous volcanic upper crust associated with minor tectonic activity is required to record well-defined seafloor spreading magnetic lineations.

## 5 References

- Bronner, A., Sauter, D., Manatschal, G., Peron-Pinvidic, G., and Munschy, M.: Magmatic breakup as an explanation for magnetic anomalies at magma-poor rifted margins, *Nat. Geosci.*, 4, 549–553, doi:10.1038/ngeo1201, 2011.
- Bronner, A., Munschy, M., Sauter, D., Carlut, J., Searle, R., and Maineuil, A.: Deep-tow 3c magnetic measurement: solutions for calibration and interpretation, *Geophysics*, 78, J15–J23, doi:10.1190/geo2012-0214.1, 2013.
- Buck, W. R., Lavier, L. L., and Poliakov, A. N. B.: Modes of faulting at mid-ocean ridges, *Nature*, 434, 719–723, 2005.
- Cann, J. R., Blackman, D. K., Smith, D. K., McAllister, E., Janssen, B., Mello, S., Avgerinos, E., Pascoe, A. R., and Escartin, J.: Corrugated slip surfaces formed at ridge-transform intersections on the mid-atlantic ridge, *Nature*, 385, 329–332, 1997.
- Cannat, M., Bideau, D., and Bougault, H.: Serpentinized peridotites and gabbros in the mid-atlantic ridge axial valley at 15°37' N and 16°52' N, *Earth Planet. Sc. Lett.*, 109, 87–106, 1992.
- Cannat, M., Mevel, C., Maia, M., Deplus, C., Durand, C., Gente, P., Agrinier, P., Belarouchi, A., Dubuisson, G., Humler, E., and Reynolds, J.: Thin crust, ultramafic exposures, and rugged faulting patterns at the mid-atlantic ridge (22–24° N), *Geology*, 23, 49–52, 1995.
- Cannat, M., Rommevaux-Jestin, C., Sauter, D., Deplus, C., and Mendel, V.: Formation of the axial relief at the very slow spreading southwest indian ridge (49–69° E), *J. Geophys. Res.*, 104, 22825–22843, 1999.
- Cannat, M., Sauter, D., Mendel, V., Ruellan, E., Okino, K., Escartin, J., Combiér, V., and Baala, M.: Modes of seafloor generation at a melt-poor ultraslow-spreading ridge, *Geology*, 34, 605–608, doi:10.1130/G22486.1, 2006.

## Magnetic signature of large exhumed mantle domains

A. Bronner et al.

Title Page

Abstract

Introduction

Conclusions

References

Tables

Figures

◀

▶

◀

▶

Back

Close

Full Screen / Esc

Printer-friendly Version

Interactive Discussion



## Magnetic signature of large exhumed mantle domains

A. Bronner et al.

Title Page

Abstract

Introduction

Conclusions

References

Tables

Figures

◀

▶

◀

▶

Back

Close

Full Screen / Esc

Printer-friendly Version

Interactive Discussion



- Cannat, M., Sauter, D., Bezos, A., Meyzen, C., Humler, E., and Le Rigoleur, M.: Spreading rate, spreading obliquity, and melt supply at the ultraslow spreading southwest indian ridge, *Geochem. Geophys. Geos.*, 9, Q04002, doi:10.1029/2007gc001676, 2008.
- Chian, D., Louden, K. E., Minshull, T. A., and Whitmarsh, R. B.: Deep structure of the ocean-continent transition in the southern Iberia Abyssal Plain from seismic refraction profiles: Ocean Drilling Program (Legs 149 and 173) transect, *J. Geophys. Res.-Sol. Ea.*, 104, 7443–7462, 1999.
- Dampney, C.: The equivalent source technique, *Geophysics*, 34, 39–53, doi:10.1190/1.1439996, 1969.
- Dean, S. M., Minshull, T. A., and Whitmarsh, R. B.: Seismic constraints on the three-dimensional geometry of low-angle intracrustal reflectors in the southern Iberia abyssal plain, *Geophys. J. Int.*, 175, 571–586, 2008.
- Dunlop, D. J. and Prévot, M.: Magnetic properties and opaque mineralogy of drilled submarine intrusive rocks, *Geophys. J. Roy. Astr. S.*, 69, 763–802, doi:10.1111/j.1365-246X.1982.tb02774.x, 1982.
- Flewellen, C., Millard, N., and Rouse, I.: Tobi, a vehicle for deep ocean survey, *Electron. Commun. Eng.*, 5, 85–93, 1993.
- Gee, J. S. and Kent, D. V.: Source of oceanic magnetic anomalies and the geomagnetic polarity timescale, in: *Treatise on Geophysics*, edited by: Schubert, G., Elsevier, 455–507, 2007.
- Georgen, J. E., Lin, J., and Dick, H. J. B.: Evidence from gravity anomalies for interactions of the Marion and Bouvet hotspots with the southwest Indian ridge: effects of transform offsets, *Earth Planet. Sc. Lett.*, 187, 283–300, 2001.
- Harrison, C.: Marine magnetic anomalies—the origin of the stripes, *Annu. Rev. Earth Pl. Sc.*, 15, 505–543, 1987.
- Hosford, A., Tivey, M., Matsumoto, T., Dick, H., Schouten, H., and Kinoshita, H.: Crustal magnetization and accretion at the southwest Indian ridge near the Atlantis II fracture zone, 0–25 Ma, *J. Geophys. Res.-Sol. Ea.*, 108, 2169, doi:10.1029/2001jb000604, 2003.
- Isezaki, N.: A new shipboard three-component magnetometer, *Geophysics*, 51, 1992–1998, 1986.
- Karson, J. A., Thompson, G., Humphris, S. E., Edmon, J. M., Bryan, W. B., Brown, J. B., Winters, A. T., Pockalny, R. A., Casey, J. F., Campbell, A. C., Klinkhammer, G. P., Palmer, M. R., Kinzler, R. J., and Sulanowska, M. M.: Along-axis variations in seafloor spreading in the Mark area, *Nature*, 328, 681–685, 1987.

## Magnetic signature of large exhumed mantle domains

A. Bronner et al.

Title Page

Abstract

Introduction

Conclusions

References

Tables

Figures

◀

▶

◀

▶

Back

Close

Full Screen / Esc

Printer-friendly Version

Interactive Discussion



- Korenaga, J.: Comprehensive analysis of marine magnetic vector anomalies, *J. Geophys. Res.*, 100, 365–378, doi:10.1029/94jb02596, 1995.
- Mallows, C. and Searle, R. C.: A geophysical study of oceanic core complexes and surrounding terrain, mid-atlantic ridge 13°n–14°n, *Geochem. Geophys. Geosy.*, 13, Q0AG08, doi:10.1029/2012gc004075, 2012.
- 5 Marshall, M. and Cox, A.: Magnetism of pillow basalts and their petrology, *Geol. Soc. Am. Bull.*, 82, 537–552, 1971.
- Mendel, V., Munsch, M., and Sauter, D.: Modmag, a matlab program to model marine magnetic anomalies, *Comput. Geosci.*, 31, 589–597, 2005.
- 10 Meyzen, C. M., Toplis, M. J., Humler, E., Ludden, J. N., and Mevel, C.: A discontinuity in mantle composition beneath the southwest indian ridge, *Nature*, 421, 731–733, doi:10.1038/nature01424, 2003.
- Minshull, T. A., Muller, M. R., Robinson, C. J., White, R. S., and Bickle, M. J.: Is the oceanic moho a serpentinization front?, *Geological Society, London, Special Publications*, 148, 71–80, doi:10.1144/gsl.sp.1998.148.01.05, 1998.
- 15 Minshull, T. A., Muller, M. R., and White, R. S.: Crustal structure of the southwest indian ridge at 66° E: Seismic constraints, *Geophys. J. Int.*, 166, 135–147, 2006.
- Nazarova, K. A.: Serpentinized peridotites as a possible source for oceanic magnetic anomalies, *Mar. Geophys. Res.*, 16, 455–462, 1994.
- 20 Oufi, O., Cannat, M., and Horen, H.: Magnetic properties of variably serpentinized abyssal peridotites, *J. Geophys. Res.*, 107, 2095, doi:10.1029/2001JB000549, 2002.
- Pariso, J. E. and Johnson, H. P.: Do layer 3 rocks make a significant contribution to marine magnetic anomalies? In situ magnetization of gabbros at ocean drilling program hole 735 b, *J. Geophys. Res.*, 98, 16033–16052, 1993.
- 25 Patriat, P., Sauter, D., Munsch, M., and Parson, L.: A survey of the southwest indian ridge axis between atlantis ii fracture zone and the indian ocean triple junction: regional setting and large scale segmentation, *Mar. Geophys. Res.*, 19, 457–480, doi:10.1023/a:1004312623534, 1997.
- Patriat, P., Sloan, H., and Sauter, D.: From slow to ultraslow: a previously undetected event at the southwest indian ridge at ca. 24 Ma, *Geology*, 36, 207–210, doi:10.1130/G24270a.1, 2008.
- 30 Reston, T. J. and McDermott, K. G.: Successive detachment faults and mantle unroofing at magma-poor rifted margins, *Geology*, 39, 1071–1074, doi:10.1130/g32428.1, 2011.



## Magnetic signature of large exhumed mantle domains

A. Bronner et al.

Title Page

Abstract

Introduction

Conclusions

References

Tables

Figures

◀

▶

◀

▶

Back

Close

Full Screen / Esc

Printer-friendly Version

Interactive Discussion



Russell, S. M. and Whitmarsh, R. B.: Magmatism at the west iberia non-volcanic rifted continental margin: evidence from analyses of magnetic anomalies, *Geophys. J. Int.*, 154, 706–730, doi:10.1046/j.1365-246X.2003.01999.x, 2003.

Sauter, D., Carton, H., Mendel, V., Munschy, M., Rommevaux-Jestin, C., Schott, J.-J., and Whitechurch, H.: Ridge segmentation and the magnetic structure of the southwest indian ridge (at 55°30'e, 55°30'e and 66°20'e): Implications for magmatic processes at ultraslow-spreading centers, *Geochem. Geophys. Geosy.*, 5, Q05K08, doi:10.1029/2003GC000581, 2004.

Sauter, D., Cannat, M., and Mendel, V.: Magnetization of 0–26.5 ma seafloor at the ultra-slow spreading southwest indian ridge 61–67° E, *Geochem. Geophys. Geosy.*, 9, Q04023, doi:10.1029/2007GC001764, 2008.

Sauter, D., Cannat, M., Roumejon, S., Andreani, M., Birot, D., Bronner, A., Brunelli, D., Carlut, J., Delacour, A., Guyader, V., MacLeod, C. J., Manatschal, G., Mendel, V., Menez, B., Pasini, V., Ruellan, E., and Searle, R.: Continuous exhumation of mantle-derived rocks at the southwest indian ridge for 11 million years, *Nat. Geosci.*, 6, 314–320, 2013.

Searle, R. C. and Bralee, A.: Asymmetric generation of oceanic crust at the ultra-slow spreading southwest indian ridge, 64° E, *Geochem. Geophys. Geosy.*, 8, Q05015, doi:10.1029/2006GC001529, 2007.

Seyler, M., Cannat, M., and Mevel, C.: Evidence for major-element heterogeneity in the mantle source of abyssal peridotites from the southwest indian ridge (52° to 68° E), *Geochem. Geophys. Geosy.*, 4, 9101, doi:10.1029/2002gc000305, 2003.

Sibuet, J. C., Srivastava, S., and Manatschal, G.: Exhumed mantle-forming transitional crust in the newfoundland-iberia rift and associated magnetic anomalies, *J. Geophys. Res.-Sol. Ea.*, 112, B06105, doi:10.1029/2005jb003856, 2007.

Srivastava, S. P., Sibuet, J. C., Cande, S., Roest, W. R., and Reid, I. D.: Magnetic evidence for slow seafloor spreading during the formation of the newfoundland and iberian margins, *Earth Planet. Sc. Lett.*, 182, 61–76, doi:10.1016/s0012-821x(00)00231-4, 2000.

Tisseau, J. and Patriat, P.: Identification des anomalies magnétiques sur les dorsales à faible taux d'expansion: Méthode des taux fictifs, *Earth Planet. Sc. Lett.*, 52, 381–396, doi:10.1016/0012-821X(81)90191-6, 1981.

Tucholke, B. E. and Sibuet, J.-C.: Leg 210 synthesis: tectonic, magmatic, and sedimentary evolution of the newfoundland-iberia rift, in: *Proceedings of the ocean drilling program, scientific*

results, edited by: Tucholke, B. E., Sibuet, J.-C., and Klaus, A., Ocean Drilling Program, College Station, TX, 1–56, 2007.

Tucholke, B. E., Behn, M. D., Buck, W. R., and Lin, J.: Role of melt supply in oceanic detachment faulting and formation of megamullions, *Geology*, 36, 455–458, doi:10.1130/g24639a.1, 2008.

Zhao, X., Turrin, B. D., Jackson, M., and Solheid, P.: Data report: Paleomagnetic and rock magnetic characterization of rocks recovered from leg 173 sites., in: Proc. Odp, sci. Results., edited by: Beslier, M.-O., Whitmarsh, R. B., Wallace, P. J., and Girardeau, J. (Ocean Drilling Program), College Station, TX, 1–34, 2001.

## SED

5, 2449–2482, 2013

### Magnetic signature of large exhumed mantle domains

A. Bronner et al.

Title Page

Abstract

Introduction

Conclusions

References

Tables

Figures

⏪

⏩

◀

▶

Back

Close

Full Screen / Esc

Printer-friendly Version

Interactive Discussion



**Table 1.** Magnetic properties of the dredge samples. Highly serpentinized peridotites are more than 90 % serpentinized and midly serpentinized peridotites are 75 to 90 % serpentinized. Natural remanent magnetization (NRM), magnetic susceptibility and Koenigsberger ratio ( $Q$ ) are plotted on Fig. 5.

Dredge #	Observations	Susceptibility (SI)	NRM ( $A m^{-1}$ )	Koenigsberger ratio ( $Q$ )	Total magnetization ( $A m^{-1}$ )
DR6	Midly Serpentinized Peridotite	0.016	0.70	1.29	1.25
DR6	Midly Serpentinized Peridotite	0.018	0.66	1.09	1.26
DR7	Midly Serpentinized Peridotite	0.016	0.79	1.47	1.32
DR7	Highly Serpentinized Peridotite	0.045	3.47	2.31	4.98
DR7	Highly Serpentinized Peridotite	0.031	1.25	1.20	2.29
DR7	Midly Serpentinized Peridotite	0.014	0.09	0.19	0.55
DR8	Highly Serpentinized Peridotite	0.002	0.08	1.56	0.13
DR8	Highly Serpentinized Peridotite	0.052	0.52	0.30	2.25
DR8	Highly Serpentinized Peridotite	0.037	0.70	0.57	1.92
DR8	Highly Serpentinized Peridotite	0.054	1.84	1.03	3.62
DR10	Midly Serpentinized Peridotite	0.028	2.12	2.29	3.04
DR10	Midly Serpentinized Peridotite	0.005	0.28	1.56	0.46
DR10	Midly Serpentinized Peridotite	0.028	0.97	1.03	1.91
DR10	Midly Serpentinized Peridotite	0.015	1.24	2.47	1.74
DR16	Highly Serpentinized Peridotite	0.058	0.92	0.48	2.86
DR16	Highly Serpentinized Peridotite	0.050	2.28	1.37	3.94
DR16	Highly Serpentinized Peridotite	0.070	1.88	0.81	4.19
DR21	Highly Serpentinized Peridotite	0.007	0.30	1.25	0.54
DR28	Highly Serpentinized Peridotite	0.020	0.64	0.95	1.31
DR28	Highly Serpentinized Peridotite	0.016	0.35	0.63	0.91
DR28	Highly Serpentinized Peridotite	0.028	0.52	0.54	1.49
DR28	Highly Serpentinized Peridotite	0.037	2.47	1.98	3.71
DR30	Highly Serpentinized Peridotite	0.013	1.94	4.52	2.36
DR30	Highly Serpentinized Peridotite	0.014	0.43	0.88	0.92
DR33	Highly Serpentinized Peridotite	0.005	0.09	0.50	0.26
DR34	Highly Serpentinized Peridotite	0.026	0.25	0.29	1.14
DR34	Highly Serpentinized Peridotite	0.020	0.17	0.25	0.84
DR34	Highly Serpentinized Peridotite	0.041	2.44	1.77	3.82
DR34	Highly Serpentinized Peridotite	0.043	7.98	5.42	9.45
DR16	Basalt	0.002	4.60	67.94	4.67
DR16	Basalt	0.001	4.18	96.31	4.22
DR16	Basalt	0.002	4.39	82.96	4.44
DR31	Phe Basalt	0.001	2.26	49.80	2.31
DR31	Phe Basalt	0.001	1.88	39.03	1.93
DR31	Aph Basalt	0.002	0.09	1.50	0.15
DR31	Aph Basalt	0.002	0.11	2.08	0.16
DR23	Aph Basalt	0.001	1.38	41.34	1.41
DR23	Aph Basalt	0.001	2.04	67.45	2.07
DR23	Aph Basalt	0.001	0.83	16.81	0.88
DR24	Aph Basalt	0.003	5.18	60.46	5.27
DR24	Aph Basalt	0.002	0.17	2.58	0.24
DR22	Ferro-Gabbro	0.009	0.26	0.82	0.58
DR22	Ferro-Gabbro	0.015	0.16	0.31	0.67
DR33	Altered Ferro-Gabbro	0.003	1.00	10.05	1.10
DR33	Altered Ferro-Gabbro	0.000	1.75	164.81	1.76
DR34	Gabbro	0.002	0.04	0.55	0.12
DR34	Gabbro	0.004	0.25	1.71	0.39
DR34	Ferro-Gabbro	0.052	2.64	1.48	4.42
DR34	Ferro-Gabbro	0.052	2.88	1.64	4.64
DR34	Altered Ferro-Gabbro	0.025	0.37	0.44	1.21
DR34	Altered-Ferro-Gabbro	0.077	4.63	1.78	7.24

**Magnetic signature of large exhumed mantle domains**

A. Bronner et al.

Title Page

Abstract Introduction

Conclusions References

Tables Figures

◀ ▶

◀ ▶

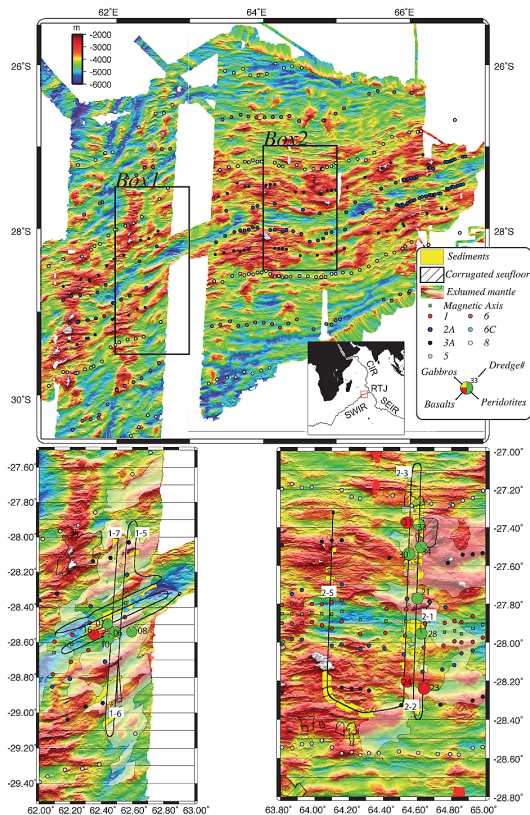
Back Close

Full Screen / Esc

Printer-friendly Version

Interactive Discussion





**Fig. 1.** Location of the two survey areas. Magnetic anomaly picks are from Sauter et al. (2008). The nature of the seafloor was deduced either from the side-scan images when available (Sauter et al., 2013) or from the multibeam bathymetric data (Cannat et al., 2006). The dredges numbers and the proportion of rocks by weight shown as pie charts are from Sauter et al. (2013). We have only shown the dredges for which we have measured the magnetic properties (see Table 1 and Figs. 3 and 5)

**Magnetic signature of large exhumed mantle domains**

A. Bronner et al.

Title Page

Abstract Introduction

Conclusions References

Tables Figures

◀ ▶

◀ ▶

Back Close

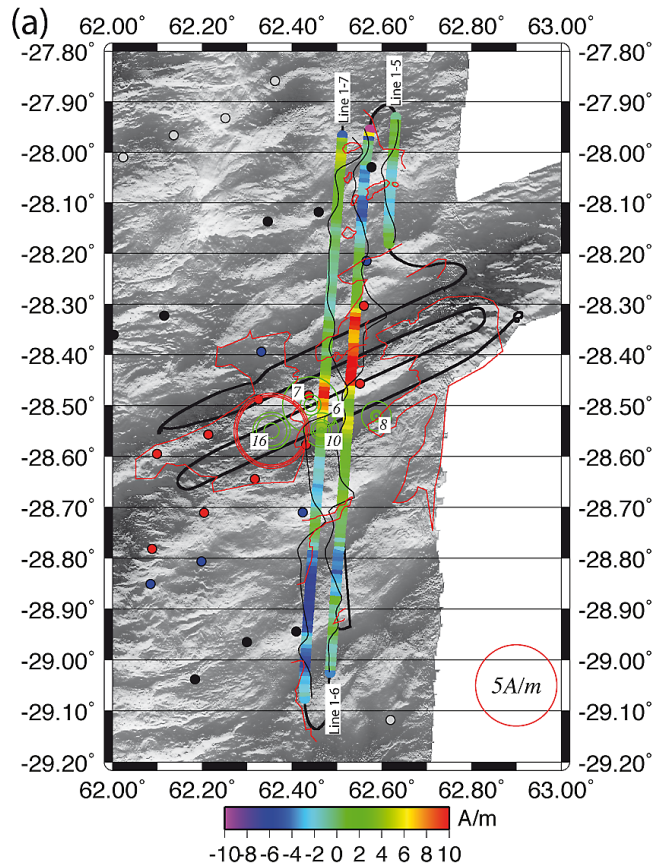
Full Screen / Esc

Printer-friendly Version

Interactive Discussion







**Fig. 3.** Inverted magnetization for the western (a) and eastern survey area (b). Colored strips show the calculated magnetization values along the magnetic anomaly profiles (black lines). Shaded relief images are shown in background. Red circles are sized relatively to the NRM values of dredged basalts whereas green circles correspond to NRM values measured on dredged peridotites (see Table 1). The thin black lines indicate the magnetic anomaly. The red lines corresponding to the edges of the volcanic seafloor are from Sauter et al. (2013). Picking of magnetic anomalies is the same as Fig. 1. As a comparison a  $14 \text{ mm a}^{-1}$  reversal pattern is superimposed on the bathymetry.

**Magnetic signature of large exhumed mantle domains**

A. Bronner et al.

Title Page

Abstract Introduction

Conclusions References

Tables Figures

◀ ▶

◀ ▶

Back Close

Full Screen / Esc

Printer-friendly Version

Interactive Discussion



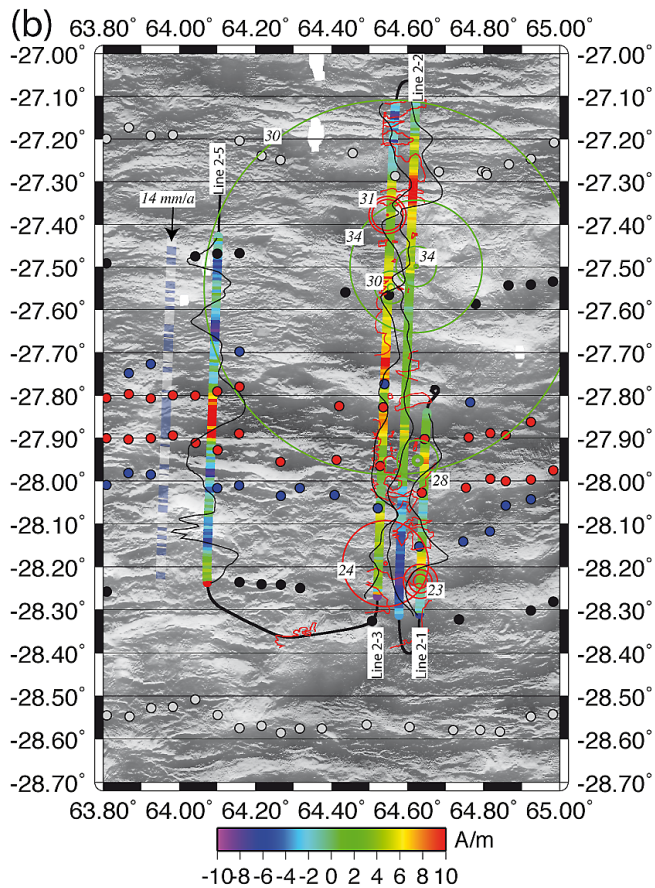


Fig. 3. Continued.

# SED

5, 2449–2482, 2013

## Magnetic signature of large exhumed mantle domains

A. Bronner et al.

Title Page

Abstract

Introduction

Conclusions

References

Tables

Figures

◀

▶

◀

▶

Back

Close

Full Screen / Esc

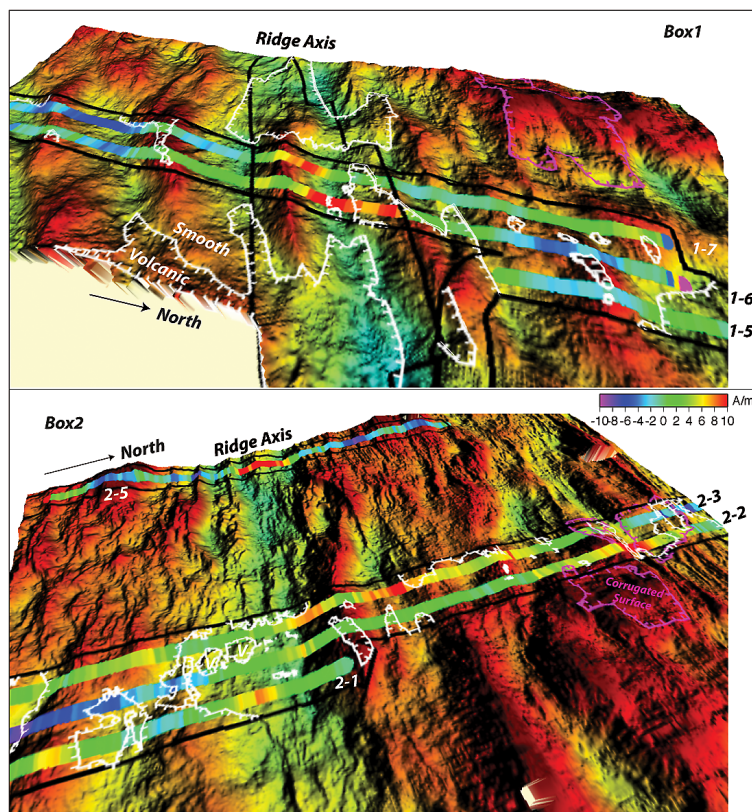
Printer-friendly Version

Interactive Discussion



## Magnetic signature of large exhumed mantle domains

A. Bronner et al.

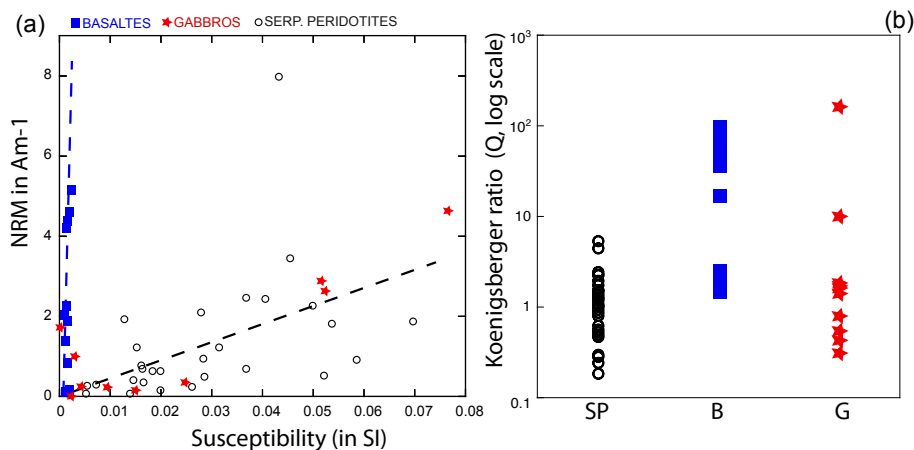


**Fig. 4.** 3-D bathymetric view of the two survey areas. The inverted magnetization (colored strips) and the edges (from Sauter et al., 2013) of both the corrugated surfaces (purple lines) and the volcanic seafloor (white lines) are draped on the multibeam bathymetry map. The black lines indicate the edges of the TOBI side-scan swath.



## Magnetic signature of large exhumed mantle domains

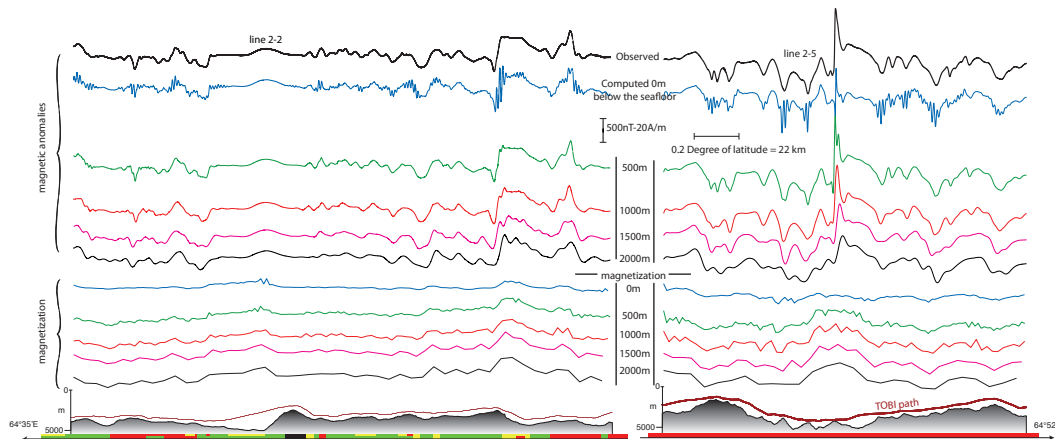
A. Bronner et al.



**Fig. 5.** (a) Natural remanent magnetization (NRM) in samples from dredged peridotites, basalts and gabbros as a function of the magnetic susceptibility ( $K$ ). (b) Koenigsberger ratio ( $Q$ ) for serpentinized peridotites (SP), basalts (B) and gabbros (G). Note that  $Q$  has a logarithmic scale.

## Magnetic signature of large exhumed mantle domains

A. Bronner et al.



**Fig. 6.** Comparison between the deep-tow measured field and the computed field along the TOBI path for different depths of inferred magnetized dipoles from 0 to 2000 m below the seafloor. The shallowest and deepest dipoles lead respectively to the appearance of high frequency oscillations in the computed field and loss of resolution in both the computed field and the magnetization solution. The best compromise is found for dipoles located around 500 m below the seafloor for the profile acquired above the volcanic crust and 1000 m for the profile collected above the exhumed mantle derived rocks. A significant loss in resolution is observed for dipoles located below 1000 m in the case of the volcanic crust whereas both the computed field and the magnetization solution are quite well preserved up to 2000 m for the case of exhumed mantle seafloor.