

Interactive comment on “Can vesicle size distributions predict eruption intensity during volcanic activity?” by A. LaRue et al.

A. LaRue et al.

don.baker@mcgill.ca

Received and published: 19 August 2013

I apologize to all readers for the figures that did not appear in the response to Shea. They are both from Shea’s comment on the paper. I have tried to include them in this response.

Interactive comment on Solid Earth Discuss., 5, 789, 2013.

Full Screen / Esc

Printer-friendly Version

Interactive Discussion

Discussion Paper

left with little confidence on the textural comparison. To illustrate this, below I plot the range in exponent values found in a few studies involving the products of explosive mafic magma eruptions as well as the experiments from Bai et al. 2008 and from the present paper:

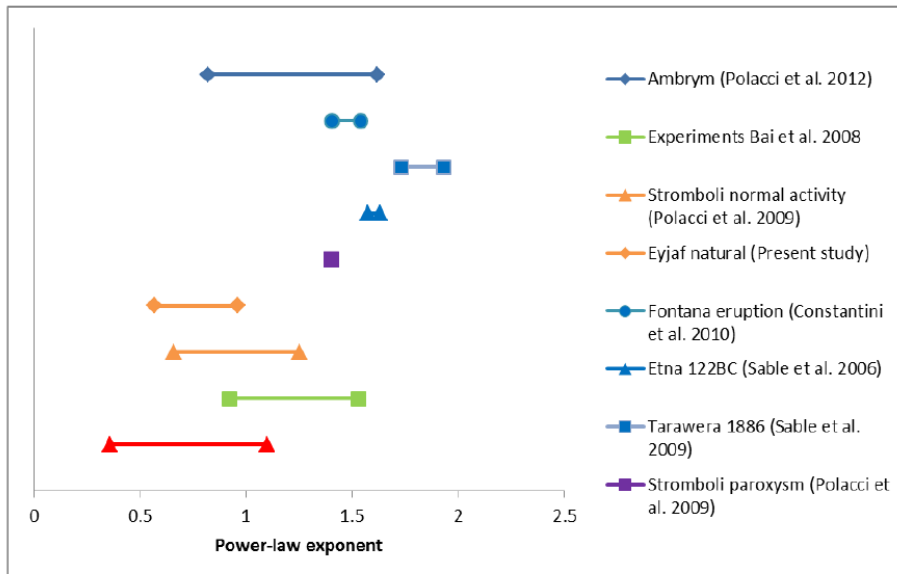


Fig. 1. Figure 1 from Shea comments

Full Screen / Esc

Printer-friendly Version

Interactive Discussion

Discussion Paper



Interactive Comment

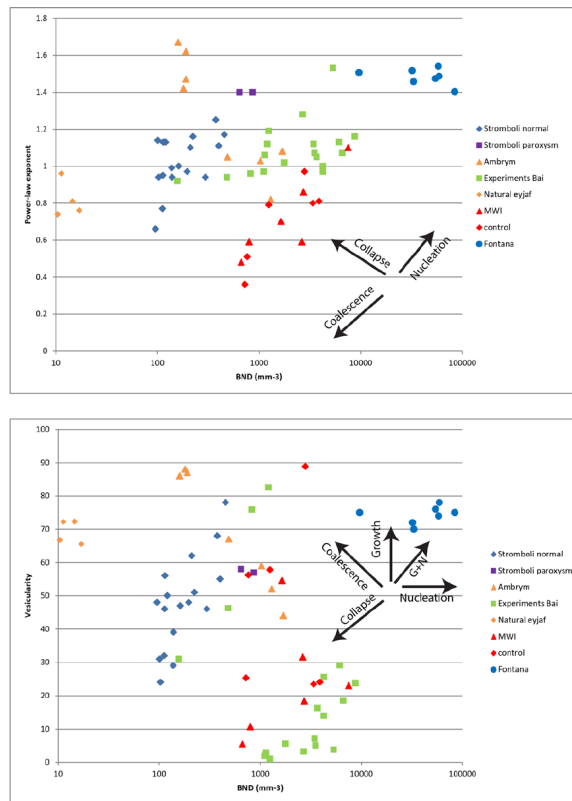


Fig. 2. Figure 2 from Shea comments

Full Screen / Esc

Printer-friendly Version

Interactive Discussion

Discussion Paper

