

**A database of
plagioclase CPO and
microstructures**

T. Satsukawa et al.

A database of plagioclase crystal preferred orientations (CPO) and microstructures – implications for CPO origin, strength, symmetry and seismic anisotropy

T. Satsukawa^{1,2,*}, **B. Ildefonse**², **D. Mainprice**², **L. F. G. Morales**³,
K. Michibayashi^{1,4}, and **F. Barou**^{2,*}

¹Graduate School of Science and Technology, Shizuoka University, Ohya 836, Shizuoka 422-8529, Japan

²Géosciences Montpellier, Université Montpellier 2 and CNRS, CC 060, 34095 Montpellier cedex 5, France

³Helmholtz Zentrum Potsdam, Deutsches GeoForschungsZentrum (GFZ), Telegrafenberg, 14473 Potsdam, Germany

⁴Institute of Geosciences, Shizuoka University, Ohya 836, Shizuoka 422-8529, Japan

* now at: ARC Center of Excellence for Core to Crust Fluid Systems (CCFS) and GEMOC National Key Centre, Department of Earth and Planetary Sciences, Macquarie University, Sydney, NSW 2109, Australia

Title Page

Abstract

Introduction

Conclusions

References

Tables

Figures

◀

▶

◀

▶

Back

Close

Full Screen / Esc

Printer-friendly Version

Interactive Discussion



Received: 3 August 2013 – Accepted: 6 August 2013 – Published: 14 August 2013

Correspondence to: T. Satsukawa (takako.satsukawa@mq.edu.au)

Published by Copernicus Publications on behalf of the European Geosciences Union.

SED

5, 1191–1257, 2013

**A database of
plagioclase CPO and
microstructures**

T. Satsukawa et al.

Title Page

Abstract

Introduction

Conclusions

References

Tables

Figures



Back

Close

Full Screen / Esc

Printer-friendly Version

Interactive Discussion



Abstract

This study presents a unique database of 170 plagioclase Crystallographic Preferred Orientations (CPO) of variously deformed gabbroic rocks. The CPO characteristics as a function of the deformation regime (magmatic or crystal-plastic) are outlined and discussed. The studied samples are dominantly from slow- and fast-spread present-day ocean crust, as well as from the Oman ophiolite. Plagioclase is the dominant mineral phase in the studied samples. Plagioclase CPOs are grouped in three main categories: Axial-B, a strong point alignment of (010) with a girdle distribution of [100]; Axial-A, a strong point maximum concentration of [100] with parallel girdle distributions of (010) and (001); and P-type, point maxima of [100], (010), and (001). A majority of CPO patterns are Axial-B and P-type, in samples showing either magmatic or crystal-plastic deformation textures. Axial-A CPOs are less common; they represent 21% of the samples deformed by crystal-plastic flow. Although fabric strength (ODF J-index) does not show any consistent variation as a function of the CPO patterns, there is a significant difference in the relationship between the ODF and pole figures J-indices; the magmatic type microstructures have high (010) pole figures J-indices, which increase linearly with ODF J-index, whereas the high [100] pole figures J-indices of plastically deformed samples vary in a more scattered manner with ODF J-index. The multistage nature of plastic deformation superposed on a magmatic structure compared with magmatic flow, and the large number of possible slip-systems in plagioclase probably account for these differences. Calculated seismic properties (P wave and S wave velocities and anisotropies) of plagioclase aggregates show that anisotropy (up to 12% for P wave and 14% for S wave) tends to increase as a function of ODF J-index. In comparison with the olivine 1998 CPO database, the magnitude of P wave anisotropy for a given J-index is much less than olivine, whereas it is similar for S wave anisotropy. Despite a large variation of fabric patterns and geodynamic setting, seismic properties of plagioclase-rich rocks have similar magnitudes of anisotropy. There is a small difference in the aggregate elastic symmetry, with magmatic microstructures

SED

5, 1191–1257, 2013

A database of plagioclase CPO and microstructures

T. Satsukawa et al.

Title Page

Abstract

Introduction

Conclusions

References

Tables

Figures



Back

Close

Full Screen / Esc

Printer-friendly Version

Interactive Discussion



having higher orthorhombic and hexagonal components, whereas plastic deformation microstructures have a slightly higher monoclinic component, possibly correlated with predominant monoclinic simple shear flow in plastically-deformed samples. Overall, plots for CPO strength (ODF J-index), pole figure strength, CPO symmetry and seismic anisotropy show significant scattering. This could be related to sampling statistics, although our database is a factor of ten higher than the olivine database of 1998, or it could be related to the low symmetry (triclinic) structure of plagioclase resulting in the addition of degrees of freedom in the processes creating the CPOs.

1 Introduction

The study of the crystallographic preferred orientations (CPO) of naturally and experimentally deformed materials provides crucial insight into geodynamic processes (e.g., Nicolas and Christensen, 1987; Karato, 2008). They are a key component of our understanding of the material processes, mechanical behavior and deformation strain history, from the crustal levels to the deep mantle. The intrinsic organization resulting from CPOs also induces anisotropic behavior of certain physical properties commonly measured in rocks, such as seismic velocity (e.g., Ben Ismaïl and Mainprice, 1998; Jung and Karato, 2001; Tommasi et al., 2008; Lloyd et al., 2009) thermal diffusivity (e.g., Tommasi et al., 2001; Gibert and Mainprice, 2009) and chemical diffusivity (e.g., Mackwell and Kohlstedt, 1990).

Plagioclase CPO is a common feature in both oceanic and continental crust (e.g., Kruhl, 1987; Mainprice and Nicolas, 1989; Benn and Allard, 1989; Ji and Mainprice, 1988; Boudier and Nicolas, 1995; Lamoureux et al., 1999; Yaouancq and Macleod, 2000; Harigane et al., 2008, 2011; Mehl and Hirth, 2008; Svahnberg and Piazzolo, 2010; Díaz-Azpiroz et al., 2011; Morales et al., 2011; Pearce et al., 2011; Jousset et al., 2012; Higgin and Tommasi, 2012), in which it primarily controls the rheology of the lower crust. Similar to a number of typically “crustal” phases (e.g. quartz, K-feldspars, phyllosilicates), the CPOs in plagioclase may have multiple origins, from mineral fab-

SED

5, 1191–1257, 2013

A database of plagioclase CPO and microstructures

T. Satsukawa et al.

Title Page

Abstract

Introduction

Conclusions

References

Tables

Figures

◀

▶

◀

▶

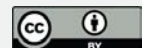
Back

Close

Full Screen / Esc

Printer-friendly Version

Interactive Discussion



A database of plagioclase CPO and microstructures

T. Satsukawa et al.

Title Page

Abstract

Introduction

Conclusions

References

Tables

Figures

◀

▶

◀

▶

Back

Close

Full Screen / Esc

Printer-friendly Version

Interactive Discussion



rics typically formed by magmatic processes, to crystallographic orientations resulting from crystal-plastic processes. These two processes are commonly superposed in the same aggregate, with crystal-plastic deformation overprinting magmatic fabrics, leading to complex fabrics that cannot be easily attributed to a dominant process. Although not yet quantified, dissolution processes during metamorphic reactions can be attributed to plagioclase deformation (e.g. Imon et al., 2002), and might also result in the development of crystallographic preferred orientations.

One of the main difficulties when dealing with crystallographic preferred orientation of plagioclase is that the CPOs resulting from magmatic flow and dislocation creep are generally similar to each other. In dislocation creep, the main slip systems in plagioclase are $\langle 100 \rangle (010)$, $\langle 100 \rangle (001)$ and $\langle 110 \rangle (001)$ (Montali and Mainprice, 1987; Stünitz et al., 2007). On the other hand, the crystallographic planes (010), and less commonly (001) tend to align and form a foliation in magmatic flow. The [100] axes (or less commonly [001]) are usually parallel to the magma flow direction. Therefore, the coupling between optical and electron-optical microstructures with CPO data is necessary for a complete understanding of the origin of plagioclase crystallographic orientation.

The effect of plagioclase on the seismic properties is also not yet well documented when compared to olivine. Seront et al. (1993) demonstrated that maximum V_p (7.8 km s^{-1}) is normal to the foliation (with the direction normal to (010) being the fast direction for plagioclase), and S waves polarized parallel to the foliation or parallel to the lineation in foliated anorthosites.

A database that jointly document plagioclase microstructures, crystallographic orientations and CPO-derived seismic properties is described and discussed herein, with the aim to provide an overview of plagioclase CPO characteristics as a function of the deformation regime (magmatic flow or crystal-plastic flow), and of the implications on seismic properties of plagioclase-bearing rocks. This is the first attempt to develop such a database because in contrast with olivine CPOs in peridotites (e.g., Ben Ismaïl and Mainprice, 1998; Tommasi et al., 2000), the plagioclase preferred orientation is much more complex to measure by optical methods due to its low crystallographic symme-

try (e.g. Benn and Mainprice, 1989). However, the growing use of the EBSD (Electron Back-Scattered Diffraction) technique over the last ~ 15 yr allowed the complete fabric characterization of virtually any type of mineral, regardless of its crystal symmetry. Here we present a large (170 samples) database of plagioclase CPOs that documents various geodynamic settings and deformation conditions. The samples have been measured using the EBSD facilities at Géosciences Montpellier.

2 Sample locations and geological background

Table 1 lists the 170 gabbro samples compiled in this study, which represent various geodynamic settings. References to published data are also given in Table 1. A majority of samples comes from present-day ocean crust (54%), or former ocean crust in the Oman ophiolite (25%).

2.1 Fast-spread ocean crust samples

Most of the samples presented here (54%) are from gabbroic rocks formed in fast-spreading environments, collected in the Oman ophiolite, and in present-day ocean crust in the Hess Deep rift valley and in ODP Hole 1256D. Although the precise initial geodynamic setting of the Oman ophiolite is still a matter of debate, the nearly continuous ocean crust present in this ophiolite makes it a classical analogue for present-day fast-spreading systems (e.g., Nicolas et al., 2000; MacLeod and Yaouancq, 2000). Hess Deep (2°14' N, 101°33' W; Hey et al., 1972; Francheteau et al., 1990) is the deepest part of a westward-propagating rift valley that is opening up in the eastern flank of the equatorial East Pacific Rise (EPR), in advance of the westward-propagating Cocos-Nazca spreading center (e.g., Schouten et al., 2008; Smith et al., 2011). The samples used here were collected on the intra-rift ridge during ODP Leg 147 (Gillis et al., 1993), and with the UK ROV ISIS during the RSS James Cook JC21 Cruise in January–February 2008 (MacLeod et al., 2011; Harris et al., 2012; Lissenberg et al., 2013).

SED

5, 1191–1257, 2013

A database of plagioclase CPO and microstructures

T. Satsukawa et al.

Title Page

Abstract

Introduction

Conclusions

References

Tables

Figures

◀

▶

◀

▶

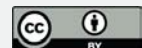
Back

Close

Full Screen / Esc

Printer-friendly Version

Interactive Discussion



ODP Hole 1256D (6°44.2' N, 91°56.1' W) is located in an area of the Cocos plate crust that was formed 15 m.y. ago on the eastern flank of the EPR at a superfast spreading rate ($\sim 220 \text{ mm yr}^{-1}$; Wilson, 1996). It is situated on a ridge segment of at least 400 km in length, located ~ 100 km north of the triple ridge junction between the Cocos, Pacific, and Nazca plates. All samples from Hole 1256D come from the petrologically complex sheeted dike – gabbro transition zone (Wilson et al., 2006; France et al., 2009; Koepke et al., 2008, 2011).

2.2 Slow-spread ocean crust samples

25% of the samples come from slow-spreading oceanic crust environments. A majority was collected in ODP Hole 735B, at the Southwest Indian ridge. The ODP Site 735 is located on the Atlantis Bank, a 11 m.y. old shallow oceanic core complex located 18 km east of the Atlantis II Transform Fault (Dick et al., 2000). Hole 735B was drilled to the depth of 1503 m below seafloor, over two ODP Legs (118 and 176; Robinson et al., 1989; Dick et al., 1999, 2000). Recovered samples are predominantly medium- to coarse-grained crystalline gabbroic rocks from a tectonically exposed lower crustal section. Additional samples come from ODP Holes 1270B, 1275B and 1275D, drilled during ODP Leg 209 at the Mid-Atlantic Ridge in the 15°20' N fracture zone area (Kelemen et al., 2004).

2.3 Other samples

The remaining samples compiled herein (21 %) come from various locations and represent a variety of gabbroic rocks (*sensu lato*) from different geodynamic settings. They include gabbros and charnockites from igneous intrusions in the Itabuna belt, in the São Francisco craton, Bahia, Brazil, granulites from the Neoproterozoic Ribeira belt, South-eastern Brazil (Egydio-Silva et al., 2002), layered gabbros from La Réunion (Piton des Neiges volcano, Cirque de Salazie), one foliated anorthosite sample from the Precam-

SED

5, 1191–1257, 2013

A database of
plagioclase CPO and
microstructures

T. Satsukawa et al.

Title Page

Abstract

Introduction

Conclusions

References

Tables

Figures

◀

▶

◀

▶

Back

Close

Full Screen / Esc

Printer-friendly Version


Interactive Discussion



brian Grenvillian basement in Oklahoma, USA (Seront et al., 1993), and basaltic lava flow samples from Saint Thibéry, southern France (Bascou et al., 2005).

3 Method

3.1 Crystallographic preferred orientation measurements

5 To evaluate the plagioclase fabric characteristics, crystallographic orientation measurements were obtained by electron backscatter diffraction (EBSD) in a scanning electron microscope (SEM). For that, we have used the JEOL JSM 5600 and the CamScan X500FE Crystal Probe SEMs, both equipped with Oxford/Nordlys EBSD detectors and the Channel 5[®] suite of programs, installed at Géosciences Montpellier (10 RS and Université Montpellier 2). Details about the EBSD technique are given in ~~Randle and Engler (2000).~~

For most measured samples, we have made extensive use of the automated crystallographic orientation mapping of whole thin sections (usually 35 mm long and 20 mm wide). The resolution of individual maps was variable, depending on the mean grain size or individual samples; on average the used step sizes ranged from 30 to 35 μm . The indexing rates in the raw maps range from 50 % to 80 %. Post-acquisition data processing included the extrapolation of well-indexed neighboring points to non-indexed points, and removal of grains (as defined by continuous domains characterized by an internal misorientation $< 10^\circ$) smaller than 5 pixels in average diameter. Pole figures were calculated using processed map data (herein called gridded data), and, in order to avoid the overrepresentation of coarse grains in individual sample, using one point per grain (herein called 1 point-per-grain data, or 1 ppg data). The oldest crystallographic orientation datasets measured more than 10 yr ago, when the automatic mapping was not yet fully functional in our system, were obtained manually, in an interactive mode (i.e., the user can select the appropriate indexation pattern for each measured point) with a one-point-per-grain data strategy. Hence 1 ppg data allows us

A database of plagioclase CPO and microstructures

T. Satsukawa et al.

Title Page

Abstract

Introduction

Conclusions

References

Tables

Figures



Back

Close

Full Screen / Esc

Printer-friendly Version

Interactive Discussion



a homogenous presentation of the older and more recent data. The 1 ppg data are used below to plot the CPO pole figures and calculate their strength and symmetry; gridded data are used to calculate seismic properties when available.

3.2 CPO strength

5 We determined the fabric strength and distribution density of the principal crystallographic axes by calculating the J-index of the orientation distribution function (ODF), simply called “J-index” here, and J-index of pole figures called “pfJ-index” (e.g. Bunge 1982; Mainprice and Silver, 1993). The rotation matrix between crystal and sample coordinates is used to describe the orientation g of a crystal in sample coordinates. In
10 practice, it is convenient to describe the rotation by a triplet of Euler angles (φ_1 , Φ , φ_2 ; Bunge, 1982). The ODF $f(g)$ is defined as the volume fraction of orientations with an orientation in the interval between g and $g + dg$ in a space containing all possible orientations given by:

$$\frac{\Delta V}{V} = \int f(g) dg \quad (1)$$

15 In this equation, $\Delta V/V$ is the volume fraction of crystals with orientation g , $dg = 1/8\pi^2 \sin \Phi d\varphi_1 d\Phi d\varphi_2$ is the fractional volume of integration in orientation space. To quantify the strength of CPOs, Mainprice and Silver (1993) used the J-index of the ODF, defined by Bunge (1982) as

$$J = \int f(g)^2 dg \quad (2)$$

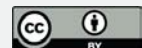
20 The J-index ranges from 1 for a random distribution to infinity for a single crystal. In a similar manner, the strength of a pole figure can be analytically defined by the pfJ-index as:

$$pfJ = \int P_{hkl}^2(\alpha, \beta) d\omega \quad (3)$$

A database of plagioclase CPO and microstructures

T. Satsukawa et al.

Title Page	
Abstract	Introduction
Conclusions	References
Tables	Figures
◀	▶
◀	▶
Back	Close
Full Screen / Esc	
Printer-friendly Version	
Interactive Discussion	



where α and β are the spherical co-ordinates of the considered direction in the pole figure, $P_{hkl}^2(\alpha, \beta)$ is the density squared in that direction for a given crystallographic pole defined by hkl and $d\omega = 1/2\pi \sin\alpha d\alpha d\beta$ is the fractional volume of integration. The index has a value of 1 for a random distribution and infinity for a single crystal.

5 The recent MTEX MatLab toolbox (Hielscher and Schaebein, 2008) now allows one to calculate J for aggregates of triclinic minerals using the de la Vallée Poussin kernel that is exactly defined in Fourier coefficients (Schaebein, 1999); we used half-width of 10° , which corresponds exactly to a series expansion of 28.

10 The analysis of the pole figure symmetry was carried out through the evaluation of the parameters P (point), G (girdle) and R (random) fabric indexes. These indexes are calculated from the eigenvalues ($\lambda_1 \geq \lambda_2 \geq \lambda_3$, with $\lambda_1 + \lambda_2 + \lambda_3 = 1$) of the normalized orientation matrices for the principal crystallographic axes and can be described as $P = \lambda_1 - \lambda_3$ (P has a high value when $\lambda_1 > \lambda_2 \approx \lambda_3$), $G = 2(\lambda_2 - \lambda_3)$ (G has a high value when $\lambda_1 \approx \lambda_2 > \lambda_3$) and $R = 3\lambda_3$ (R has a high value when $\lambda_1 \approx \lambda_2 \approx \lambda_3$) (Woodcock, 1977; Vollmer, 1990.). These indices range from 0 to 1, and $P + G + R = 1$. P and G are the values for a given crystallographic pole figure, which represents a set of vectors of pole to planes $\perp(hkl)$ or directions $[uvw]$ used for eigenvalue calculations. The notation $\perp(hkl)$ is simplified to (hkl) below. P and G are used in the eigenvalue analysis (Sects. 5, 7) when introducing the BA-index.

20 3.3 Calculation of elastic symmetry

We have calculated the elastic symmetry of hypothetical 100% plagioclase aggregates to further characterize the symmetry aspect associated with CPOs. The analysis of elastic symmetry of minerals and mineral aggregates has been previously applied to mantle samples by Harder (1988) and Mainprice and Silver (1993). More recently
25 Browaeyns and Chevrot (2004) have re-formulated the problem in terms of an Euclidean norm for an elastic tensor of arbitrary symmetry. The elastic constants are transformed into an eigen-tensor representation and stored as a vector X , the Euclidean norm is simply given as $\sqrt{X \cdot X}$. The Euclidean norm gives the measure of the distances be-

A database of plagioclase CPO and microstructures

T. Satsukawa et al.

Title Page

Abstract

Introduction

Conclusions

References

Tables

Figures

◀

▶

◀

▶

Back

Close

Full Screen / Esc

Printer-friendly Version

Interactive Discussion



tween the different elastic symmetry solutions and their relative proportions in the initial arbitrary elastic tensor being analyzed. We have applied the method using the holohe-
dral symmetry classes trigonal, monoclinic, orthorhombic, tetragonal, and hexagonal
plus isotropic, which always represents the major fraction. To use this method the Voigt
average elastic constants were calculated, as Euclidean norm is only valid for this av-
erage.

3.4 Calculation of seismic properties

Seismic properties of the polycrystalline aggregates were computed by averaging indi-
vidual grain elastic-constant tensors as a function of the CPO and modal composition
of a sample (e.g. Mainprice, 1990) through the Voigt–Reuss–Hill averaging scheme.
Whenever available, the gridded data were used to calculate the seismic properties of
the samples, and the modal compositions were derived from these maps as seismic
properties dependent on the fractional volume or in present case the fractional area.
This method enables the calculation of the three-dimensional distribution of seismic ve-
locities in an anisotropic polycrystalline aggregate (Mainprice and Humbert, 1994). We
have used the following elastic constants experimentally determined at ambient condi-
tions (plagioclase: Aleksandrov et al., 1974; clinopyroxene: Collins and Brown, 1998;
orthopyroxene: Chal et al., 1997, olivine: Abramson et al., 1997; amphibole: Aleksan-
drov and Ryzhova, 1961). Anisotropy of seismic velocities (AV_p and AV_s) is defined (in
percent) as $200(V_{\max} - V_{\min}) / (V_{\max} + V_{\min})$.

4 Microstructures

Rock types, modal compositions and microstructural observations are listed in Table 2
for all samples presented here. Some of the modal compositions are shown as 100 %
of plagioclase when measurements were done manually. Mineral composition is pla-
gioclase + clinopyroxene ± olivine ± amphibole (± orthopyroxene). Typical plagioclase

SED

5, 1191–1257, 2013

A database of plagioclase CPO and microstructures

T. Satsukawa et al.

Title Page

Abstract

Introduction

Conclusions

References

Tables

Figures

◀

▶

◀

▶

Back

Close

Full Screen / Esc

Printer-friendly Version

Interactive Discussion



microstructures in this study are shown in Fig. 1. The samples can be classified into two types, those that have a predominant magmatic microstructure (Fig. 1a to d) and those that have crystal-plastic microstructures (Fig. 1e and f). The magmatic flow textures display straight or curvilinear grain boundaries (Fig. 1a and b). Plagioclase grains are commonly oriented and their shape defines a foliation (Fig. 1a). In some samples grain boundaries have more irregular shapes, and grain size becomes bi-modal with a few recrystallized grains (Fig. 1c and d). These microstructures are characteristics of incipient high temperature plastic deformation, which overprint magmatic flow textures. Samples deformed by significant crystal-plastic flow (Fig. 1e and f) are characterized by the joint occurrence of porphyroclasts and neoblasts. Porphyroclasts consist of plagioclase and clinopyroxene, whereas neoblasts are commonly only plagioclase. Some ultramylonitic samples from Hole 735B also show recrystallized olivine and clinopyroxene. Small-grained size textures (Fig. 1e and f) are from localized shear zones, associated with enhanced strain rate and/or decreasing lithospheric temperature. For all samples in this study, deformation type was defined for each sample (Table 2). More than 60% of samples have a magmatic flow texture.

5 Crystallographic preferred orientation of plagioclase

Measured CPOs are presented in equal-area, lower-hemisphere stereographic projections (Figs. 2 and 3, and Supplemental Figs. 1 to 7). Pole figures of plagioclase crystal orientations are in the thin section reference frame; the long axis of thin section is parallel to the east–west horizontal direction in the pole figure. The significance of this reference frame differs with the sample provenance. The samples from Oman ophiolite, Brazil and Oklahoma, and the dive samples from Hess Deep were cut in (or close to) the structural XZ plane (parallel to the lineation and normal to the foliation). Samples from ocean drill cores were cut in the core reference frame, with the core vertical direction either parallel or perpendicular to the long axis of thin section. To obtain a representative CPO of the rock, the number of measured crystals must be at least 100

**A database of
plagioclase CPO and
microstructures**

T. Satsukawa et al.

Title Page

Abstract

Introduction

Conclusions

References

Tables

Figures

◀

▶

◀

▶

Back

Close

Full Screen / Esc

Printer-friendly Version

Interactive Discussion



grains (e.g. Ben Ismaïl and Mainprice, 1998); the automated mapping of CPOs allows one to measure many more than this in general (see Table 3).

5.1 Fast-spread ocean crust samples

5 About 43 plagioclase CPOs from gabbros and anorthosites from the Oman ophiolite (Fig. 2b, c, Supplement Fig. 1, and Morales et al., 2011) show relatively high concentrations of (010) poles in a point maximum with a perpendicular girdle concentration of [100] axes. Some samples show CPO patterns with concentration of both (010) and (001) poles perpendicular to the foliation, and with [100] axes distributed along the foliation plane (e.g., 95OB4, 98OB10g, 90OA77). From ODP Hole 1256D in the East Pacific crust, we have 12 samples (Supplement Fig. 2). The CPOs are generally weak, (010) poles show relatively high concentrations (312-1256D-230R1-15, 312-1256D-230R1-73, and 312-1256D-230R1-118-a). The CPOs of 38 samples from Hess Deep (Supplement Fig. 3) have variable intensities, and most also have relatively high concentration of (010) poles (Fig. 2a).

15 5.2 Slow-spread ocean crust samples

ODP Hole 735B in slow-spread crust provides the second largest single dataset of 41 samples in the database. They display various types of CPO (Supplement Fig. 4). Slip systems cannot be uniquely inferred from the CPO in plastically deformed samples. The majority of samples shows CPO patterns with girdle concentrations of both (010) and (001) poles and with [100] axes distributed normal to them (Fig. 2f to h). Another type of pattern shows no girdle concentration, [100] and (010) are both concentrated as point maxima (e.g., 176-735B-130R3-115, 176-735B-189R7-98). A few samples have the pattern commonly described in fast-spread ocean crust, with strong (010) concentration (e.g., 176-735B-165R3-111). The three samples from the Mid-Atlantic Ridge have relatively weak CPOs with no girdle concentration (Supplement Fig. 5).

SED

5, 1191–1257, 2013

A database of plagioclase CPO and microstructures

T. Satsukawa et al.

Title Page

Abstract

Introduction

Conclusions

References

Tables

Figures

◀

▶

◀

▶

Back

Close

Full Screen / Esc

Printer-friendly Version

Interactive Discussion



5.3 Other samples

The remainder of the samples compiled herein comes from various locations (Supplement Figs. 5 to 7). Samples of gabbros and charnockites from igneous intrusions in the Itabuna belt (Sao Francisco craton, Bahia, Brazil) and granulites from the Neoproterozoic Ribeira belt (Southeastern Brazil) show weak generally plagioclase CPOs and do not show strong concentration of any particular axis in relation to the specimen reference frame. The CPOs of layered gabbros from La Réunion (Piton des Neiges volcano, Cirque de Salazie; Supplement Fig. 5) show the same common type of CPO as in fast-spread ocean crust; (010) poles are strongly concentrated with girdle concentration of [100] and/or (001). Samples of basaltic lava flow samples from Saint Thibéry (Southern France; Supplement Fig. 7) show plagioclase CPOs with relatively strong (010) maxima. The foliated anorthosite sample from the Precambrian Grenvillian basement in Oklahoma (USA; Seront et al., 1993; Fig. 2d; Supplement Fig. 7) shows a very strong concentration of (010) with clear girdle concentration of [100] and (001).

5.4 Classification of the plagioclase CPOs

There is a large variability in the plagioclase CPOs in the database and we need to introduce some descriptive methods. We can classify them into three main groups (Fig. 3). The Axial-B fabric is defined by a strong point maximum concentration of (010) and perpendicular girdle distributions of [100] and (001), and it can be also called (010)-fiber pattern or texture. The type-P CPO shows point maxima of the three pole figures [100], (010) and (001), however the concentration of (001) poles is often weaker than the others. Lastly the Axial-A fabric has a strong point maximum concentration of [100] with perpendicular girdle distributions of (010) and (001), this is a [100]-fiber pattern or texture. Nearly all of the plagioclase fabrics compiled in this study fall into one of these three groups, as reported in the last column of Table 3. However, some samples are noted in Table 3 as having weak or not identifiable CPOs.

SED

5, 1191–1257, 2013

A database of plagioclase CPO and microstructures

T. Satsukawa et al.

Title Page

Abstract

Introduction

Conclusions

References

Tables

Figures

◀

▶

◀

▶

Back

Close

Full Screen / Esc

Printer-friendly Version

Interactive Discussion



5.5 Plagioclase CPO and microstructure

Figure 2 shows typical examples of magmatic flow and crystal-plastic flow textures, with corresponding CPOs. Samples with typical magmatic textures systematically show Axial-B fabric when CPO is developed, with a strong concentration of (010) planes parallel to the magmatic foliation of those samples (Fig. 2a to d). The systematic relationship between plagioclase (010) concentration and magmatic foliation is related to the tabular shape of plagioclase grains, and commonly described in other studies (e.g., Lamoureux et al., 1999; Morales et al., 2011).

Sample 176-735B-133R1-35 shows type-P CPO, with [100] being sub-parallel to the foliation, and (010) normal to foliation (Fig. 2e), which is consistent with the classically described (010)[100] slip system (e.g., Montardi and Mainprice, 1987; Rosenberg and Stünitz, 2003). The other plastically deformed samples show Axial-A CPOs that have high concentrations of [100], consistent with the lineation direction, indicating that the activated plagioclase slip system is [100](010) and/or [100](001) (Fig. 2e to f), as described also by Mehl and Hirth (2008) in similar samples from ODP Hole 735B.

5.6 Fabric strength

The literature on olivine CPOs is abundant and their relationships with deformation processes and intensity are well documented (e.g., Ben Ismail and Mainprice, 1998; Dijkstra et al., 2002; Tommasi et al., 2004; Linckens et al., 2011). In contrast, because of the inherent difficulty to measure low-symmetry crystal orientations pre-EBSD times, the literature on plagioclase CPOs is much less abundant and relationships with deformation processes remain poorly documented (see references in the introduction). The calculated J-index of all plagioclase fabrics reported in this study is shown in Figs. 4 and 5, and Table 3. We have removed from further analysis the three files with less than 100 measurements, as J is then abnormally high. The ODF J-index ranges from 1.1 to 14.3, with a mean value of 4.1 and a standard deviation of 2.43. The fabric strength of samples with magmatic flow textures is variable, although it is dominantly weak (Fig. 5a,

A database of plagioclase CPO and microstructures

T. Satsukawa et al.

Title Page

Abstract

Introduction

Conclusions

References

Tables

Figures



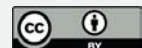
Back

Close

Full Screen / Esc

Printer-friendly Version

Interactive Discussion



c); in contrast, plastically deformed samples have relatively weak J-indices (Fig. 5a, d). There are no strong relationships with the variation of J-index and CPO types (Fig. 5b); Axial-A CPOs always have weak J-indices.

5.7 Eigenvalue analysis of (010) and [100] pole figure symmetry

To characterize (010) and [100] pole figure symmetry, as it is important to identify the differences between Axial-B type and Axial-A type, we use the BA-index defined by the eigenvalue analysis, which does not depend on contouring methods and is independent on the sample reference frame. This method is based on well-established technique of eigenvalue analysis of pole figures, and is presented in detail by Ulrich and Mainprice (2005), who used a similar index to quantify CPO variations in omphacite.

In the present study, there is a clear variation of the (010) and [100] pole figures from point maxima to girdle distributions, with associated changes in the (001) pole figures. We introduce the BA-index (similar to the LS index used Ulrich and Mainprice, 2005, to described variations between the symmetry of (010) and [001] pole figures in omphacite) to characterize the symmetry variation of the (010) and [100] pole figures, which is defined as $1/2[2 - \{P_{(010)}/(G_{(010)} + P_{(010)})\} - \{P_{[100]}/(G_{[100]} + P_{[100]})\}]$. P and G are defined in Sect. 3.2 above.

A perfect Axial-B fabric has a (010) point maximum and [100] girdle, which results in a BA-index of 0. A perfect P-type fabric has point maxima of (010) and [100], which results in a BA-index of 0.5. A perfect Axial-A fabric has a [100] point maximum and (010) girdle, which results in a BA-index of 1. The BA-index of the studied samples is shown in Fig. 6 and Table 3, and ranges from 0.09 to 0.85. Samples with magmatic textures show a dominant Axial-B signature (Fig. 6a), consistent with our observation that magmatic sample CPOs are dominated by a strong maximum of (010). BA-indices related to CPOs of plastically deformed samples are more randomly distributed (Fig. 6b).

The variation of the ODF and pole figure J-indices as a function of fabric symmetry shows some differences between samples with the magmatic (Fig. 6c) and plastic (Fig. 6d) deformation microstructures. Although ODF J-indices have similar ranges in

A database of plagioclase CPO and microstructures

T. Satsukawa et al.

Title Page

Abstract

Introduction

Conclusions

References

Tables

Figures



Back

Close

Full Screen / Esc

Printer-friendly Version

Interactive Discussion



both microstructural types, pole figure J-indices are nearly twice as strong for magmatic samples. The magmatic flow CPOs are more tightly grouped between Axial-B and P types with a BA-index of 0.1 to 0.6, whereas the plastic deformation CPOs are widely spread over the full BA-index range. In both microstructural types the individual samples have scattered data points, the linear fits to all points indicate some trends (Fig. 6c and d). The (001) pole figure J-index is the lowest pole figure value in both microstructural types. In the magmatic samples, the (010) pole figure J-index is the highest values and the [100] pfJ has an intermediate value, but both decrease as the BA-index increases from 0.1 to about 0.6. In contrast, in the plastically deformed samples the (010) and (001) pfJ linear fit are almost constant, whereas the [100] pfJ increases with increasing BA-index, and is the highest pfJ value for BA-indices > 0.3.

5.8 Elastic symmetry analysis

Here we use the decomposition of the elastic tensors calculated using plagioclase CPOs (see Sect. 3) as additional information about fabric related symmetry. Both magmatic and plastic deformation microstructural types have very high isotropic components, 95.9 and 96.2%, respectively, and among the anisotropic components triclinic is the highest, 2.1 and 2.3%, respectively (Fig. 7, Table 4). The magmatic type has higher orthorhombic (1.0%) and hexagonal (0.4%) components whereas the plastic deformation has a relatively high monoclinic (0.8%) component.

6 Seismic properties

We calculated two versions of the seismic properties, depending on the type of CPO data (1 ppg or gridded data) to show the effect of these parameters on the calculated properties: (1) 1 ppg data considering just the plagioclase CPOs (Table 5), and (2) gridded data considering just the plagioclase CPOs (Table 6).

SED

5, 1191–1257, 2013

A database of plagioclase CPO and microstructures

T. Satsukawa et al.

Title Page

Abstract

Introduction

Conclusions

References

Tables

Figures

◀

▶

◀

▶

Back

Close

Full Screen / Esc

Printer-friendly Version

Interactive Discussion



A database of plagioclase CPO and microstructures

T. Satsukawa et al.

Title Page

Abstract

Introduction

Conclusions

References

Tables

Figures

⏪

⏩

◀

▶

Back

Close

Full Screen / Esc

Printer-friendly Version

Interactive Discussion



The results for 1 sample are shown in Fig. 8 as an example. Seismic properties are calculated from 1 ppg data (Fig. 8a and c) and gridded data (Fig. 8b and d). P wave propagation is fastest parallel to the highest density of (010) and slowest in the orthogonal direction (Fig. 9a and b). The polarization plane of the fastest S wave (V_{s_1}) is dominantly sub-perpendicular to the great circle that defines the preferred alignment of (010) planes. V_p ranges from 6.56 to 6.8 km s^{-1} for the 1 ppg version, and from 6.51 to 6.91 km s^{-1} for the gridded data version. The differences between 1 ppg and gridded CPO data is the effect of the grain size heterogeneity that is only recorded in the gridded data; this effect is particularly marked in the case of a porphyroclastic texture with large porphyroclast grains as in sample 176-735B-133R1-35 (Fig. 2e). Gridded data in this case also produces higher values of anisotropy for both P wave and S wave, but does not markedly change the anisotropy direction; P wave anisotropy (AV_p) changes from 3.6 to 5.9 %, and maximum S wave anisotropy ($AV_{s_{\max}}$) changes from 4.3 to 7.3 % (Fig. 8).

To calculate seismic properties of the complete CPO database in a consistent way, including oldest datasets that were acquired manually, we have to use the 1 ppg data. This also has the advantage to allow a direct comparison with the other existing CPO database for olivine of Ben Ismaïl and Mainprice (1998). We should point out that 100 % plagioclase aggregates do not realistically represent the seismic properties of polyphased rocks such as gabbro, it does however allow us to quantify the contribution of plagioclase to the anisotropy of crustal rocks. The 100 % plagioclase aggregate P wave velocity varies from 6.38 to 7.30 km s^{-1} , the mean S wave velocity varies from 3.29 to 3.56 km s^{-1} , P wave anisotropy varies from 1.0 to 11.0 %, and the maximum S wave anisotropy varies from 0.99 to 13.85 %.

The seismic properties of the three CPO symmetry types defined above, Axial-B, P-type and Axial-A, are presented in Fig. 9 for 100 % plagioclase aggregates. The P wave velocity distribution illustrates the changes with CPO symmetry; the Axial-B has a high V_p point maximum normal to the foliation, the P-type has similar high velocity normal to the foliation and north-south girdle of high velocity, and the Axial-A has a high velocity

girdle normal to the foliation. The evolution of the S wave anisotropy is more complex as Axial-B has two symmetrical girdles of high anisotropy. The P-type has two less symmetrical girdles of high anisotropy. The Axial-A has a large girdle of high anisotropy nearly parallel to the foliation. The Vs1 polarization pattern has no simple relationship to the foliation orientation, but is essentially sub-perpendicular to the foliation in all three types of CPO.

7 Discussion

7.1 Relationships between seismic anisotropy, fabric strength and symmetry

The effect of plagioclase CPO symmetry on seismic properties is directly illustrated in Fig. 9. In all three types of CPO, the fast velocity direction of the samples is that of the preferred orientation of the normal to planes (010), i.e., perpendicular to the foliation in foliated samples. The P-type symmetry is clearly a transitional symmetry between the two Axial-B and Axial-A end-members, with fast directions defining a point maximum, and a girdle, respectively. The magnitude of anisotropy does not change greatly between the three CPO symmetries, for both P wave (7.2, 7.7 and 6.4 %) and S wave (6.7, 8.2 and 7.2 %). The variation of the P wave velocities follows a simple pattern, the S wave anisotropy and Vs1 polarization have more complex distributions in all the CPO symmetry types.

In our database, the range of J-index for plagioclase CPOs covers a slightly smaller range (1.1 to 14.3; Table 3) than that documented for olivine (2.3 to 16.9) when recalculated here using our MTEX code (Hielscher and Schaeben, 2008; Mainprice et al., 2011) for the data used by Ben Ismaïl and Mainprice (1998). Figure 10 shows the seismic anisotropy as a function of the ODF J-index for both P waves (Fig. 10a) and S waves (Fig. 10b), we have also plotted a trend line for the olivine CPO data from Ben Ismaïl and Mainprice (1998). The seismic anisotropy increases as a non-linear function of fabric strength, up to 11 % for P wave and 14 % for S wave. The P wave anisotropy

SED

5, 1191–1257, 2013

A database of plagioclase CPO and microstructures

T. Satsukawa et al.

Title Page

Abstract

Introduction

Conclusions

References

Tables

Figures



Back

Close

Full Screen / Esc

Printer-friendly Version

Interactive Discussion



is higher for magmatic than plastic deformation microstructures (Fig. 10a), whereas for S wave anisotropy both microstructures have similar anisotropies. The scatter in anisotropy values for P- and S waves for both microstructural types increases with increasing J-index (Fig. 10a, b). This is more prominent for S waves, and was not observed for olivine by Ben Ismaïl and Mainprice (1998). The anisotropy of P waves (AVp) varies between 1.0 and 11.0 %, with a mean value of 4.7 % and a standard deviation of 2.0, whereas the maximum shear wave splitting (AVs_{max}) varies between 1.0 and 13.8 %, with a mean value of 4.7 % and a standard deviation of 2.2. AVp is smaller than those reported for olivine aggregates and AVs has similar range (in olivine aggregates, AVp varies between 3.1 to 19.1 % and AVs_{max} varies between 2.5 % to 13.5 %; Ben Ismaïl and Mainprice, 1998). The trend line for AVp of olivine aggregates on Fig. 12a shows a much stronger anisotropy at low to moderate J-index than that for plagioclase aggregates. Although seismic anisotropy (for both P- and S waves) increases non-linearly as a function of fabric strength for both plagioclase (Fig. 10a, b) and olivine, the non-linearity is stronger for olivine. AVp is significantly higher in olivine, whereas for AVs olivine anisotropy is only slightly higher than that of plagioclase.

The plots of anisotropy as a function of fabric symmetry using the BA-index (Fig. 10c, d) shows similar trends for P- and S wave, including high values for Axial-A and P-type for the magmatic microstructures. AVp and AVs do not vary significantly with fabric symmetry for the plastic deformation microstructure. The scatter is more apparent in the symmetry plots than for fabric strength, suggesting that fabric strength is the first-order control of the magnitude of anisotropy.

7.2 The effect of plastic deformation overprint of a magmatic microstructure on CPO type

In most plastically deformed samples, it is highly likely that crystal-plastic deformation is superposed on pre-existing magmatic microstructure. This crystal-plastic overprint of magmatic textures is commonly described in slow-spread crust drill cores (e.g., Dick

SED

5, 1191–1257, 2013

A database of plagioclase CPO and microstructures

T. Satsukawa et al.

Title Page

Abstract

Introduction

Conclusions

References

Tables

Figures

◀

▶

◀

▶

Back

Close

Full Screen / Esc

Printer-friendly Version

Interactive Discussion



et al., 1999, 2000; Blackman et al., 2006). In our plagioclase database, the factors that are consistent with such plastic deformation overprint are;

- Differences in the plot of PF J-index vs. ODF J-index (Fig. 5c, d). A stronger linear correlation between PF and ODF J-indices is seen for magmatic microstructure, formed by a simple CPO symmetry preserving a process of progressive CPO development. In contrast, plastic deformation microstructure has very poor correlation between PF and ODF J-indices, particularly for the likely dominant [100] slip direction, and to lesser extent the likely (010) slip plane. The overprinting plastic deformation is probably developing in any orientation with respect to the pre-existing magmatic structure. If the latter has a strong CPO, it is plastically extremely anisotropic, and hence not necessarily very favorable to enhance (homogeneous) plastic deformation.
- Differences in the relation between fabric strength (ODF and PF J-indices) and fabric symmetry (BA-index) (Fig. 6c, d). Figure 5 shows that magmatic samples has stronger fabrics than plastically deformed samples. The fabric symmetries of the magmatic samples are strongly dominated by Axial-B and to a lesser extent by P-type fabrics, i.e., they are strongly foliated, with variably well-defined lineations. In contrast, plastic deformation is not preferentially associated with any particular fabric type; it results in fairly widely distributed BA-index values (Fig. 6). The data suggests that plastic deformation may reduce the fabric strength as it imposes new fabric symmetry. As pointed above, the symmetry of CPO formed by plastic deformation is not systematically well aligned with the magmatic CPO, hence it has a tendency to destroy magmatic crystal alignment and produce a weaker CPO.
- If we refer to the symmetry of the elastic tensors calculated from plagioclase CPOs (Fig. 7), we note there is a difference between plastic deformation microstructure with relatively higher monoclinic symmetry component, with a ratio plastic/magmatic of 0.8%/0.4%, and magmatic microstructure with relatively

SED

5, 1191–1257, 2013

A database of plagioclase CPO and microstructures

T. Satsukawa et al.

Title Page

Abstract

Introduction

Conclusions

References

Tables

Figures



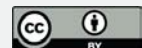
Back

Close

Full Screen / Esc

Printer-friendly Version

Interactive Discussion



A database of plagioclase CPO and microstructures

T. Satsukawa et al.

Title Page

Abstract Introduction

Conclusions References

Tables Figures

◀ ▶

◀ ▶

Back Close

Full Screen / Esc

Printer-friendly Version

Interactive Discussion



high orthorhombic and hexagonal, with ratios plastic/magmatic of 0.4%/1% and 0.3%/0.4%, respectively. In case of a superposed plastic deformation the high orthorhombic and hexagonal components of the magmatic microstructure are partly compensated by a relative increase of the monoclinic component (i.e., dominantly simple shear) associated with plastic deformation.

8 Conclusions

We have selected 169 plagioclase-bearing samples for detailed microstructural and CPO study. All samples had between 100 and 28367 measured grains, with a total of 194842 grains that have been measured with an average of 1153 grains per sample. This represents one order of magnitude increase in the number of mineral grains measured per sample compared with the olivine CPO database of Ben Ismaïl and Mainprice (1998).

The large mass of data has allowed the detection of a number of important characteristics of plagioclase CPOs:

- Three main CPO symmetry types have been characterized, the Axial-B type with point maximum of (010) and perpendicular girdles of [100] and (001) (low BA-index \approx 0.2), the P-type with all 3 pole figures with point maximum (intermediate BA-index \approx 0.5), and the Axial-A type with point maximum [100] pole figure and perpendicular girdles of (010) and (001) (high BA-index \approx 0.7). The transition from Axial-B to Axial-A, through P-Type, corresponds to the change from a dominantly foliated fabric, with the foliation marked by the preferred alignment of (010) planes, and no or a weak lineation, to a dominantly linear fabric, with the lineation defined by the preferred alignment of [100] axes.
- The classification of the microstructures in magmatic and plastic deformation allowed the distribution of the CPO symmetry to be defined, with the Axial-B and P-type being more frequent in the magmatic, whereas for plastic deformation the

Discussion Paper | Discussion Paper | Discussion Paper | Discussion Paper

A database of plagioclase CPO and microstructures

T. Satsukawa et al.

Title Page

Abstract

Introduction

Conclusions

References

Tables

Figures



Back

Close

Full Screen / Esc

Printer-friendly Version

Interactive Discussion



Discussion Paper | Discussion Paper | Discussion Paper | Discussion Paper | Discussion Paper

CPO symmetry is more distributed in all three types, with Axial-A being the most characteristic. Axial-A fabrics are particularly expected to develop when crystal-plastic deformation overprints a prominent magmatic foliation and is sub-parallel to it. In this case, the pre-existing foliation allow the grains to be favorably oriented for the [100](010) slip system to be preferentially activated

- There is a significant difference in the relationship between the ODF and pole figures J-indices. The magmatic microstructures have high (010) pole figures J-indices, which vary linearly with ODF J-index, where as the high [100] pole figures J-indices of plastically deformed samples vary in a more scattered manner with ODF J-index. In the magmatic case, the relation is simpler as it is only related to the preferred alignment of plagioclase grains in magmatic flow. The stronger scattering observed for plastic deformation results from the combination of changing CPO symmetry due to the superposition of plastic deformation on pre-existing magmatic CPOs, and of the possible activation of multiple slip systems during dislocation creep in plagioclase (e.g., Montardi and Mainprice, 1987; Stunitz et al., 2003).
- Seismic anisotropy increases as a function of plagioclase CPO strength (ODF J-index) for both P- and S waves. In comparison with the olivine CPO database of Ben Ismaïl and Mainprice (1998), the magnitude of P wave anisotropy for a given J-index is much less than olivine, whereas it similar for S wave anisotropy. There is a weak correlation between seismic anisotropy and fabric symmetry for magmatic microstructures, being more anisotropic for Axial-B; there is no correlation for plastic deformation microstructures.
- The three CPO types are associated with three different distributions of seismic anisotropy. For P wave anisotropy the fast direction is correlated with the point maximum of (010) pole figure in all cases, i.e., normal to the foliation when the rock is foliated. The velocity is higher for the Axial-B, which typically has a stronger CPO. In the Axial-A CPO type, the high Vp directions are distributed in a girdle

A database of plagioclase CPO and microstructures

T. Satsukawa et al.

Title Page

Abstract

Introduction

Conclusions

References

Tables

Figures

⏪

⏩

◀

▶

Back

Close

Full Screen / Esc

Printer-friendly Version

Interactive Discussion



normal to the point maximum of [100] pole figure, i.e., to the lineation. The girdle contains a maximum that is variably strong, depending on the preferred alignment of (010) planes that define a weak mineral foliation. The distribution of the S wave anisotropy also varies with CPO symmetry, but it has a relatively complex relationship to the foliation.

- There is a small difference in the elastic anisotropy, with magmatic microstructures having higher orthorhombic and hexagonal components, whereas plastic deformation microstructures have a slightly higher monoclinic component, possibly correlated with predominant monoclinic simple shear flow in plastically-deformed samples.
- There is a lot of scatter in many of the plots for CPO strength, pole figure strength, CPO symmetry and seismic anisotropy. This could be related to sampling statistics, although our database is a factor of ten larger than the olivine database of 1998, or it could be related to the low symmetry (triclinic) structure of plagioclase resulting in the addition of degrees of freedom in the processes creating the CPO.

Finally, the presence of others phases such as olivine, orthopyroxene and/or clinopyroxene will generally, by destructive interference, reduce seismic anisotropy in multi-phase plagioclase rocks, such as gabbros.

Supplementary material related to this article is available online at

<http://www.solid-earth.net/5/1191/2013/sed-5-1191-2013-supplement.zip>

Acknowledgements. C. Nevado is thanked for providing high-quality polishing of sections for SEM-EBSD analysis. Special thanks go to A. Nicolas, F. Boudier, J. Bascou, M. Drouin, M. Egydio-Silva, B. Valsardieu, K. Howard, who provided the majority of the original CPO data as part of their theses or publications. This work was supported by a Grant-in-Aid for Scientific Research (223708) as part of a JSPS Research Fellowship for Young Scientists (to TS), and research grants from JSPS (22244062, to KM).

References

- Abramson, E. H., Brown, J. M., Slutsky, L. J., and Zang, J. J.: The elastic constants of San Carlos olivine to 17 GPa, *J. Geophys. Res.*, 102, 12253–12263, 1997.
- Aleksandrov, K. S. and Ryzhova, T. V.: The elastic properties of rock forming minerals, pyroxenes and amphiboles, *Bull. Acad. Sci. USSR Geophys. Ser.*, 871–875, 1961.
- Aleksandrov, K. S., Alchikov, U. V., Belikov, B. P., Zaslavskii, B. I., and Krupnyi, A. I.: Velocities of elastic waves in minerals at atmospheric pressure and increasing precision of elastic constants by means of EVM, *Izv. Acad. Sci. USSR, Geologic Series*, 10, 15–24, 1974 (in Russian).
- Bascou, J., Camps, P., and Dautria, J. M.: Magnetic versus crystallographic fabrics in a basaltic lava flow, *J. Volcano. Geotherm. Res.*, 145, 119–135, 2005.
- Ben Ismail, W. and Mainprice, D.: An olivine fabric database: an overview of upper mantle fabrics and seismic anisotropy, *Tectonophysics*, 296, 145–157, 1998.
- Benn, K. and Allard, B.: Preferred mineral orientations related to magmatic flow in ophiolite layered gabbros, *J. Petrol.*, 30, 925–946, 1989.
- Benn, K. and Mainprice, D.: An interactive program for the determination of plagioclase crystal axes orientations from U-stage measurements: an aid for petrofabric studies, *Comput. Geosci.*, 15, 1127–1142, 1989.
- Blackman, D. K., Ildfonse, B., John, B. E., Ohara, Y., Miller, D. J., MacLeod, C. J., and the Expedition 304/305 Scientists: Proc. IODP, 304/305: College Station TX, Integrated Ocean Drilling Program Management International, Inc., doi:10.2204/?iodp.proc.304305.2006, 2006.
- Boudier, F. and Nicolas, A.: Nature of the moho transition zone in the Oman ophiolite, *J. Petrol.*, 36, 777–796, 1995.
- Browaeyns, J. T. and Chevrot, S.: Decomposition of the elastic tensor and geophysical applications, *Geophys. J. Int.*, 159, 667–678, 2004.
- Bunge, H. J.: *Texture Analysis in Materials Sciences*, Butterworth, London, 1982.
- Chai, M., Brown, J. M., Slutsky, L. J., and Zang, J.: The elastic constants of an aluminous orthopyroxene to 12.5 GPa, *J. Geophys. Res.*, 102, 14779–14785, 1997.
- Collins, M. D. and Brown, J. M.: Elasticity of an upper mantle clinopyroxene, *Phys. Chem. Miner.*, 26, 7–13, 1998.
- Díaz-Azpiroz, M., Lloyd, G. E., and Fernandez, C.: Deformation mechanism of plagioclase and seismic anisotropy of the Acebuches metabasites (SW Iberian massif), in: *Deformation*

SED

5, 1191–1257, 2013

A database of plagioclase CPO and microstructures

T. Satsukawa et al.

Title Page

Abstract

Introduction

Conclusions

References

Tables

Figures

◀

▶

◀

▶

Back

Close

Full Screen / Esc

Printer-friendly Version

Interactive Discussion



A database of plagioclase CPO and microstructures

T. Satsukawa et al.

Title Page

Abstract

Introduction

Conclusions

References

Tables

Figures

◀

▶

◀

▶

Back

Close

Full Screen / Esc

Printer-friendly Version

Interactive Discussion



Mechanism, Rheology and Tectonics: Microstructures, Mechanics and Anisotropy, edited by: Prior, D. L., Rutter, E. H., and Tatham, D. J., Geological Society, London, Special Publications, 360, 79–95, 2011.

Dick, H. J. B., Natland, J. H., Miller, D. J., and the Shipboard Scientific Party: Proc. ODP, Init. Repts., 176: College Station, TX, Ocean Drilling Program, ,
doi:10.2973/odp.proc.ir.176.1999, 1999.

Dick, H. J. B., Natland, J. H., Alt, J. C., Bach, W., Bideau, D., Gee, J. S., Haggas, S., Hertogen, J. G. H., Hirth, G., Holm, P. M., Ildefonse, B., Iturrino, G. J., John, B. E., Kelley, D. S., Kikawa, E., Kingdon, A., Le Roux, P. J., Maeda, J., Meyer, P. S., Miller, D. J., Naslund, H. R., Niu, Y., Robinson, P. T., Snow, J., Stephen, R. A., Trimby, P. W., Worm, H.-U., and Yoshinobu, A.: A long in situ section of the lower ocean crust: results of ODP Leg 176 drilling at the Southwest Indian Ridge, Earth Planet. Sci. Lett., 179, 31–51, 2000.

Dijkstra, A. H., Drury, M. R., and Vissers, R. L. M.: On the role of melt-rock reaction in mantle shear zone formation in the Othris Peridotite Massif (Greece), J. Struct. Geol., 24, 1431–1450, 2002.

Egydio-Silva, M., Vauchez, A., Bascou, J., and Hippertt, L.: Hightemperature deformation in the Neoproterozoic transpressional Ribeira belt, southeast Brazil, Tectonophysics, 352, 203–224, 2002.

Fontaine, F. R., ildefonse, B., and Bagdassarov, N. S.: Temperature dependence of shear wave attenuation in partially molten gabbro-norite at seismic frequencies, Geophys. J. Internatl., 163, 1025–1038. doi:10.1111/j.1365-246X.2005.02767.x, 2005.

France, L., Ildefonse, B., and Koepke, J.: Interactions between magma and hydrothermal system in Oman ophiolite and in IODP Hole 1256D: fossilization of a dynamic melt lens at fast spreading ridges, Geochem. Geophys. Geosy., 10, Q10O19, doi:10.1029/2009GC002652, 2009.

Francheteau, J., Armijo, R., Cheminée, J. L., Hekinian, R., Lonsdale, P., and Blum, N.: 1 Ma East Pacific Rise oceanic crust and uppermost mantle exposed by rifting in Hess Deep (equatorial Pacific Ocean), Earth Planet. Sc. Lett., 101, 281–295, doi:10.1016/0012-821X(90)90160-Y, 1990.

Gibert, B. and Mainprice, D.: Effect of crystal preferred orientations on the thermal diffusivity of quartz polycrystalline aggregates at high pressure, Tectonophysics, 465, 150–163, doi:10.1016/j.tecto.2008.11.006, 2009.

A database of plagioclase CPO and microstructures

T. Satsukawa et al.

Title Page

Abstract

Introduction

Conclusions

References

Tables

Figures



Back

Close

Full Screen / Esc

Printer-friendly Version

Interactive Discussion



- Gillis, K., Mével, C., Allan, J., and the Shipboard Scientific Party: Proc. ODP, Init. Repts., 147: Proc. ODP, Init. Repts., 147: College Station, TX, Ocean Drilling Program, 1993.
- Harder, S.: Analysis of elastic symmetry from velocity measurements with applications to dunite and bronzitite, *Geophys. J.*, 94, 469–477, 1988.
- 5 Harigane, Y., Michibayashi, K., and Ohara, Y.: Shearing within lower crust during progressive retrogression: structural analysis of gabbroic rocks from the Godzilla Mullion, an oceanic core complex in the Parece Vela backarc basin, *Tectonophysics*, 457, 183–196, doi:10.1016/j.tecto.2008.06.009, 2008.
- Harigane, Y., Michibayashi, K., and Ohara, Y.: Deformation and hydrothermal metamorphism of gabbroic rocks within the Godzilla Megamullion, Parece Vela Basin, Philippine Sea, *Lithos*, 124, 185–199, doi:10.1016/j.lithos.2011.02.001, 2011.
- 10 Harris, M., Henstock, T., Ildefonse, B., and Teagle, D. A.: Slow cooling of the ocean crust, fast spreading benchmarks for slow spreading ridges, Abstract OS13B-1719 presented at 2012 Fall Meeting, AGU, San Francisco, CA, 3–7 December, 2012.
- 15 Hey, R. N., Deffeyes, K. S., Johnson, G. L., and Lowrie, A.: The Galapagos triple junction and plate motions in the East Pacific, *Nature*, 237, 20–22, 1972.
- Hielscher, R. and Schaeben, H.: A novel pole figure inversion method: specification of the MTEX algorithm, *J. Appl. Cryst.*, 41, 1024–1037, 2008.
- Higgie, K. and Tommasi, A.: Feedbacks between deformation and melt distribution in the crust-mantle transition zone of the Oman ophiolite, *Earth Planet. Sci. Lett.*, 359–360, 61–72, 2012.
- 20 Ildefonse, B., Valsardieu, B., Pezard, P., Mainprice, D., and Garrido, C. J.: Petrophysics and anisotropy of gabbros and peridotites from the Oman ophiolite, in: *Textures and physical properties of rocks*, edited by: Leiss, B., Ullemeyer, K., and Weber, K., *Göttinger Arbeiten zur Geologie und paläontologie*, Geologische Institute, Universität Göttingen, Göttingen, 73–74, 1999.
- 25 Imon, R., Okudaira, T., and Fujimoto, A.: Dissolution and precipitation processes in the deformed amphibolites: an example from the ductile shear zone of the Ryoike metamorphic belt, SW Japan, *J. Metam. Geol.*, 22, 231–243, 2002.
- Ji, S. and Mainprice, D.: Natural deformation fabrics of plagioclase: implication for slip systems and seismic anisotropy, *Tectonophysics*, 147, 145–163, 1988.
- 30 Joussetin, D., Morales, L. F. G., Nicolle, M., and Stephant, A.: Gabbro layering induced by simple shear in the Oman ophiolite Moho transition zone, *Earth Planet. Sci. Lett.*, 331–332, 55–66, doi:10.1016/j.epsl.2012.02.022, 2012.

- Jung, H. and Karato, S.-I.: Water-induced fabric transitions in olivine, *Science*, 293, 1460–1463, 2001.
- Karato, S.-I.: *Deformation of Earth Materials*, Cambridge University Press, Cambridge, 2008.
- Kelemen, P. B., Kikawa, E., Miller, D. J., and the Shipboard Scientific Party: Proc. ODP, Init. Repts., 209: Proc. ODP, Init. Repts., 209: College Station, TX, Ocean Drilling Program, ,
5 doi:10.2973/odp.proc.ir.209.2004, 2004.
- Koepke, J., Christie, D. M., Dziony, W., Holtz, F., Lattard, D., Maclennan, J., Park, S., Scheibner, B., Yamasaki, T., and Yamazaki, S.: Petrography of the dike-gabbro transition at IODP Site 1256 (equatorial Pacific): the evolution of the granoblastic dikes, *Geochem. Geophys. Geosy.*, 9, Q07O09, doi:10.1029/2008GC001939, 2008.
- 10 Koepke, J., France, L., Mueller, T., Faure, F., Goetze, N., Dziony, W., and Ildefonse, B.: Gabbros from IODP Site 1256, equatorial Pacific: insight into axial magma chamber processes at fast spreading ocean ridges, *Geochem. Geophys. Geosy.*, 12, Q09014, doi:10.1029/2011gc003655, 2011.
- 15 Kruhl, J. H.: Preferred lattice orientations of plagioclase from amphibolite and greenschist facies rocks near the Insubric Line (Western Alps), *Tectonophysics*, 135, 233–242, doi:10.1016/0040-1951(87)90164-8, 1987.
- Lamoureux, G., Ildefonse, B., and Mainprice, D.: Modelling the seismic properties of fast-spreading ridge crustal Low-Velocity Zones: insights from Oman gabbro textures, *Tectonophysics*, 312, 283–301, 1999.
- 20 Linckens, J., Herwegh, M., Müntener, O., and Mercolli, I: Evolution of a polymineralic mantle shear zone and the role of second phases in the localization of deformation, *J. Geophys. Res.*, 116, B06210, doi:10.1029/2010JB008119, 2011.
- Lissenberg, C. J., MacLeod, C. J., Howard, K. A., and Godard, M.: Pervasive reactive melt migration through fast-spreading lower oceanic crust (Hess Deep, equatorial Pacific Ocean), *Earth Planet. Sci. Lett.*, 361, 436–447, doi:10.1016/j.epsl.2012.11.012, 2013.
- 25 Lloyd, G. E., Butler, R. W. H., Casey, M., and Mainprice, D.: Deformation fabrics, mica and seismic properties of the continental crust, *Earth Planet. Sci. Lett.*, 288, 320–328, 2009.
- Mackwell, S. J. and Kohlstedt, D.: Diffusion of hydrogen in olivine: implications for water in the mantle, *J. Geophys. Res.*, 95, 5079–5088, 1990.
- 30 MacLeod, C. J., Boudier, F., Yaouancq, G., and Richter, C.: Gabbro fabrics from Site 894, Hess Deep: implications for magma chamber processes at the East Pacific Rise, in: Proc. ODP,

**A database of
plagioclase CPO and
microstructures**T. Satsukawa et al.

Title Page

Abstract

Introduction

Conclusions

References

Tables

Figures

◀

▶

◀

▶

Back

Close

Full Screen / Esc

Printer-friendly Version

Interactive Discussion



A database of plagioclase CPO and microstructures

T. Satsukawa et al.

Title Page

Abstract

Introduction

Conclusions

References

Tables

Figures

◀

▶

◀

▶

Back

Close

Full Screen / Esc

Printer-friendly Version

Interactive Discussion



Sci. Results, edited by: Mével, C., Gillis, K. M., Allan, J. F., and Meyer, P. S., College Station, TX (Ocean Drilling Program), 317–328, doi:10.2973/odp.proc.sr.147.018.1996, 1996

MacLeod, C. J. and Yaouancq, G.: A fossil melt lens in the Oman ophiolite: implications for magma chamber processes at fast spreading ridges, *Earth Planet. Sci. Lett.*, 176, 357–373, 2000.

MacLeod, C. J., Lissenberg, J. C. L., Howard, K. A., Ildefonse, B., and Morris, A.: Fast Spreading Mid Ocean Ridge Magma Chamber Processes: New Constraints from Hess Deep, AGU 2011 Fall Meeting abstract V21B-2499, 2011.

Mainprice, D.: An efficient FORTRAN program to calculate seismic anisotropy from the lattice preferred orientation of minerals, *Comput. Geosci.*, 16, 385–393, 1990.

Mainprice, D. and Humbert, M.: Methods of calculating petrophysical properties from lattice preferred orientation data, *Surv. Geophys.*, 15, 575–592, 1994.

Mainprice, D. and Nicolas, A.: Development of shape and lattice preferred orientations: application to the seismic anisotropy of the lower crust, *J. Struct. Geol.*, 11, 175–189, 1989.

Mainprice, D. and Silver, P. G.: Interpretation of SKS-waves using samples from the subcontinental lithosphere, *Phys. Earth Planet. Int.*, 78, 257–280, 1993.

Mainprice, D., Hielscher, R., and Schaeben, H.: Calculating anisotropic physical properties from texture data using the MTEX open source package, in: *Deformation Mechanisms, Rheology and Tectonics: Microstructures, Mechanics and Anisotropy*, edited by: Prior, D. J., Rutter, E. H., and Tatham, D. J., *Geol. Soc. Lond. Spec. Publ.*, 360, 175–192, 2011.

Mehl, L. and Hirth, G.: Plagioclase preferred orientation in layered mylonites: evaluation of flow laws for the lower crust, *J. Geophys. Res.*, 113, B05202, doi:10.1029/2007JB005075, 2008.

Montardi, Y. and Mainprice, D.: A TEM study of the natural plastic deformation of calcic plagioclase, *Bull. Mineral.*, 110, 1–14, 1987.

Morales, L. F. G., Boudier, F., and Nicolas, A.: Microstructures and crystallographic preferred orientation of anorthosites from Oman ophiolite and dynamics of melt lenses, *Tectonics*, 30, TC2011, doi:10.1029/2010TC002697, 2011.

Nicolas, A. and Christensen, N. I.: Formation of anisotropy in upper mantle peridotites: a review, in: *Composition, Structure and Dynamics of the Lithosphere-Asthenosphere System*, *Geodyn. Ser.*, Vol. 16, edited by Fuchs, K. and Froidevaux, C., AGU, Washington, DC, 111–123, 1987.

A database of plagioclase CPO and microstructures

T. Satsukawa et al.

Title Page

Abstract

Introduction

Conclusions

References

Tables

Figures

◀

▶

◀

▶

Back

Close

Full Screen / Esc

Printer-friendly Version

Interactive Discussion



Nicolas, A., Boudier, F., Ildefonse, B., and Ball, B.: Accretion of Oman and United Arab Emirates ophiolite: discussion of a new structural map, *Mar. Geophys. Res.*, 21, 147–179, doi:10.1023/A:1026769727917, 2000.

Nicolas, A., Boudier, F., Koepke, J., France, L., Ildefonse, B., and Mével, C.: Root zone of the sheeted dike complex in the Oman ophiolite, *Geochem. Geophys. Geosyst.*, 9, Q05001, doi:10.1029/2007GC001918, 2008.

Nicolas, A., Boudier, F., and France, L.: Subsidence in magma chamber and the development of magmatic foliation in Oman ophiolite gabbros. *Earth and Planet. Sci. Lett.*, 284, 76–87, doi:10.1016/j.epsl.2009.04.012, 2009

Pearce, M. A., Wheeler, J., and Prior, D. J.: Relative strength of mafic and felsic rocks during amphibolite facies metamorphism and deformation, *J. Struct. Geol.*, 33, 662–675, doi:10.1016/j.jsg.2011.01.002, 2011.

Randle, V. and Engler, O.: *Introduction to Texture Analysis: Microstructure, Microtexture and Orientation Mapping*, Gordon & Breach Science Publishers, Reading, UK, 2000.

Robinson, P. T., Von Herzen, R., and the Shipboard Scientific Party: *Proc. ODP, Init. Repts. 118: Proc. ODP, Init. Repts. 118: College Station, TX, Ocean Drilling Program*, 1989.

Rosenberg, C. L. and Stünitz, H.: Deformation and recrystallization of plagioclase along a temperature gradient: an example from the Bergell tonalite, *J. Struct. Geol.*, 25, 389–408, 2003.

Schaeben, H.: The de la Vallée Poussin standard orientation density function, *Textures Microstruct.*, 33, 365–373, 1999.

Schouten, H., Smith, D. K., Montési, L. G. J., Zhu, W., and Klein, E. M.: Cracking of lithosphere north of the Galapagos triple junction, *Geology*, 36, 339, doi:10.1130/G24431A.1, 2008.

Seront, B., Mainprice, D., and Christensen, N. I.: A determination of the three-dimensional seismic properties of anorthosite: comparison between values calculated from the petrofabric and direct laboratory measurements, *J. Geophys. Res.*, 98, 2209–2221, 1993.

Smith, D. K., Schouten, H., Zhu, W.-L., Montési, L. G. J., and Cann, J. R.: Distributed deformation ahead of the Cocos-Nazca Rift at the Galapagos triple junction, *Geochem. Geophys. Geosy.*, 12, Q11003, doi:10.1029/2011GC003689, 2011.

Stünitz, H., Fitz Gerald, J. D., and Tullis, J.: Dislocation generation, slip systems, and dynamic recrystallization in experimentally deformed plagioclase single crystals, *Tectonophysics*, 372, 215–233, 2003.

Svahnberg, H. and Piazzolo, S.: The initiation of strain localisation in plagioclase-rich rocks: insights from detailed microstructural analyses, *J. Struct. Geol.*, 32, 1404–1416, 2010.

**A database of
plagioclase CPO and
microstructures**

T. Satsukawa et al.

Title Page

Abstract

Introduction

Conclusions

References

Tables

Figures

◀

▶

◀

▶

Back

Close

Full Screen / Esc

Printer-friendly Version

Interactive Discussion



- Tommasi, A., Mainprice, D., Canova, G., and Chastel, Y.: Viscoplastic self-consistent and equilibrium-based modeling of olivine lattice preferred orientations: implications for the upper mantle seismic anisotropy, *J. Geophys. Res.*, 105, 7893, doi:10.1029/1999JB900411, 2000.
- Tommasi, A., Gilbert, B., Seipold, U., and Mainprice, D.: Anisotropy of thermal diffusivity in the upper mantle, *Nature*, 411, 783–786, 2001.
- Tommasi, A., Godard, M., Coromina, G., Dautria, J. M., and Barszczus, H.: Seismic anisotropy and compositionally induced velocity anomalies in the lithosphere above mantle plumes: a petrological and microstructural study of mantle xenoliths from French Polynesia, *Earth Planet. Sci. Lett.*, 227, 539–556, 2004.
- Tommasi, A., Vauchez, A., and Ionov, D. A.: Deformation, static recrystallization, and reactive melt transport in shallow subcontinental mantle xenolith (Tok Cenozoic volcanic field, SE Siberia), *Earth Planet. Sci. Lett.*, 272, 65–77, doi:10.1016/j.epsl.2008.04.020, 2008.
- Ulrich, S. and Mainprice, D.: Does cation ordering in omphacite influence development of lattice-preferred orientation?, *J. Struct. Geol.*, 27, 419–431, 2005.
- Vollmer, F. W.: An application of eigenvalue methods to structural domain analysis, *Geol. Soc. Am. Bull.*, 102, 786–791, 1990.
- Wilson, D. S.: Fastest known spreading on the Miocene Cocos-Pacific plate boundary, *Geophys. Res. Lett.*, 23, 3003–3006, 1996.
- Wilson, D. S., Teagle, D. A. H., Alt, J. C., Banerjee, N. R., Umino, S., Miyashita, S., Acton, G. D., Anma, R., Barr, S. R., Belghoul, A., Carlut, J., Christie, D. M., Coggon, R. M., Cooper, K. M., Cordier, C., Crispini, L., Durand, S. R., Einaudi, F., Galli, L., Gao, Y., Geldmacher, J., Gilbert, A. L., Hayman, N. W., Herrero-Bervera, E., Hirano, N., Holter, S., Ingle, S., Jiang, S., Kalberkamp, U., Kerneklian, M., Koepke, J., Laverne, C., Vasquez, H. L., MacLennan, J., Morgan, S., Neo, N., Nichols, H. J., Park, S.-H., Reichow, N. K., Sakuyama, T., Sano, T., Sandwell, R., Scheibner, B., Smith-Duque, C. E., Swift, S. A., Tartarotti, P., Tikku, A. A., Tominaga, M., Veloso, E. A., Yamasaki, T., Yamazaki, S., Ziegler, C.: Drilling to gabbro in intact ocean crust, *Science*, 312, 1016–1020, doi:10.1126/science.1126090, 2006.
- Woodcock, N. H.: Specification of fabric shapes using an eigenvalue method, *Geol. Soc. Am. Bull.*, 88, 1231–1236, 1977.
- Yaouancq, G. and Macleod, C. J.: Petrofabric investigation of gabbros from the Oman ophiolite: comparison between AMS and rock fabric, *Mar. Geophys.*, 21, 189–305, 2000.

A database of plagioclase CPO and microstructures

T. Satsukawa et al.

Title Page

Abstract

Introduction

Conclusions

References

Tables

Figures



Back

Close

Full Screen / Esc

Printer-friendly Version

Interactive Discussion



Table 1. Geodynamic environment, deformation type, CPO type, locality and related references of each sample in this study. B, P and A in the CPO type column are Axial-B, type P and Axial-A, respectively.

Geodynamic environment of samples	Amount of samples	Deformation type	CPO type	Locality and related references
Fast spread oceanic crust	93 (54.1 %)	plastic 0.0 % magmatic 100.0 %	B 53.3 %; P 46.7 % A 0.0 %	Oman ophiolite (1) (2) (3) (4) (5) (6) (7) (8), ODP Hole 1256D (8), Hess Deep (9) (10) (11)
Slow spread oceanic crust	43 (25 %)	plastic 58.1 % magmatic 41.9 %	B 35.7 % P 42.9 % A 21.4 %	DP Hole 735B (12), ODP Leg 209 (8)
Others (various Massifs and Lavas)	36 (20.6 %)	plastic 50.0 % magmatic 50.0 %	B 65.6 %; P 31.3 %; A 3.1 %	Brazil (13) (14), La Réunion (15), St-Thibéry (16), Oklahoma (17)

(1) Ildefonse et al. (1999)

(2) Nicolas et al. (2008)

(3) Nicolas et al. (2009)

(4) Morales et al. (2011)

(5) Lamoureux et al. (1999)

(6) Fontaine et al. (2005)

(7) Unpublished data from Lamoureux (1999).

(8) Unpublished data from B. Ildefonse.

(9) MacLeod et al. (1996)

(10) Unpublished data from Yaouancq (1999)

(11) Unpublished data from Howard (2008)

(12) Unpublished data from Ildefonse et al.

(13) Egydio-Silva et al. (2002), Unpublished data from Bascou (2002)

(14) Unpublished data from Burgos (2005)

(15) Unpublished data from Drouin and Ildefonse

(16) Bascou et al. (2005)

(17) Seront et al. (1993)

Table 2. Modal composition (%), rock type, deformation type and related references for the gabbros studied here. Mode: modal composition; Pl: plagioclase; Cpx; clinopyroxene; Ol: olivine, Opx: orthopyroxene; Amp: amphibole, respectively.

Sample#	Mode (%)				Rock type	Deformation	Data source (see Table 1)
	Pl	Cpx	Ol	Opx			
Oman ophiolite							
86OA20C	100	0	0	0	0	anorthositic gabbro	magmatic (7)
88OA13	59	14	27	0	0	olivine gabbro	magmatic (7)
88OA14b	77	23	0	0	0	gabbro	magmatic (7)
90OA68	59	29	11	0	0	olivine bearing gabbro	magmatic (7)
90OA77	47	37	16	0	0	gabbro	magmatic (7)
90OF11	70	25	5	0	0	olivine bearing gabbro	magmatic (5)
92OB100b	71	29	0	0	0	gabbro	magmatic (7)
92OB101	59	41	0	0	0	gabbro	magmatic (7)
92OB134	67	33	0	0	0	oxide gabbro	magmatic (7)
92OB139	46	43	11	0	0	olivine bearing gabbro	magmatic (7)
92OB140a	59	22	19	0	0	gabbro	magmatic (7)
92OB140c	54	46	0	0	0	olivine bearing gabbro	magmatic (7)
92OB142	80	20	0	0	0	gabbro	magmatic (7)
92OB143	55	37	7	0	0	olivine gabbro	magmatic (7)
93OB157	94	6	0	0	0	gabbro	magmatic (7)
94OB28	87	12	1	0	0	gabbro	magmatic (7)
95OA129	100	1	0	0	0	gabbro	magmatic (5)
95OB4	63	10	27	1	0	gabbro	magmatic + weak HT plastic (8)
97OB1C	46	14	0	41	0	gabbronorite	magmatic (recrystallized) (6)
98OB10a	46	50	4	0	0	cpx-ol gabbro	magmatic (1)
98OB10e	30	64	6	0	0	cpx-ol gabbro	magmatic (1)
98OB10g	40	38	23	0	0	cpx-ol gabbro	magmatic (1)
98OB7a	86	14	0	0	0	gabbro	magmatic (1)
98OB8b	55	38	7	0	0	gabbro	magmatic (1)
06OA31b	64	36	0	0	0	diabase	magmatic (2)
07_2_OA_10B	96	3	1	0	0	anorthosite	magmatic (4)
07_2_OA_18b	98	2	0	0	0	anorthosite	magmatic (4)
07_2_OA_18c	98	2	0	0	0	anorthosite	magmatic (4)
07_2_OA_30b	98	0	2	0	0	anorthosite	magmatic (4)
07_2_OA_30h	93	6	0	0	0	anorthosite	magmatic (4)
07_2_OA_37	89	11	0	0	0	anorthosite	magmatic (4)
07_2_OA_37b	100	0	0	0	0	anorthosite	magmatic (4)
07_2_OA_41g	78	16	3	3	0	anorthosite	magmatic (4)
07_2_OA_42c	89	9	1	0	0	anorthosite	magmatic (4)

A database of plagioclase CPO and microstructures

T. Satsukawa et al.

Title Page

Abstract Introduction

Conclusions References

Tables Figures

◀ ▶

◀ ▶

Back Close

Full Screen / Esc

Printer-friendly Version

Interactive Discussion



Table 2. (continued).

Sample#	Mode (%)					Rock type	Deformation	Data source (see Table 1)
	Pl	Cpx	Ol	Opx	Amp			
07_2_OA_45c3	97	2	1	0	0	anorthosite	magmatic	(4)
07_2_OA_45c4	83	17	0	0	0	anorthosite	magmatic	(4)
07_2_OA_66	95	5	0	0	0	anorthosite	magmatic	(4)
07_OA_8g_2S	88	12	0	0	0	anorthosite	magmatic	(4)
07-2OA13	34	58	5	4	0	gabbro	magmatic	(3)
07OA20a	34	58	5	4	0	gabbro	magmatic	(3)
07OA20c1	77	28	0	0	0	gabbro	magmatic	(3)
07OA20d	77	23	0	0	0	gabbro	magmatic	(3)
07OA20e	80	20	0	0	0	gabbro	magmatic	(3)
Cocos Plate (East-Pacific Rise), ODP Hole 1256D								
312-1256D-202R1-8	81	12	0	1	6	diabase	magmatic	(8)
312-1256D-213R1-52	41	20	7	0	32	gabbro	magmatic	(8)
312-1256D-223R3-5	58	33	0	4	5	gabbro	magmatic	(8)
312-1256D-230R1-15	33	54	0	7	6	diabase	magmatic	(8)
312-1256D-230R1-73	61	28	0	4	7	diabase & gabbro	magmatic	(8)
312-1256D-230R1-118-a	68	22	0	6	4	diabase & gabbro	magmatic	(8)
312-1256D-230R1-118-b	62	25	0	10	3	diabase & gabbro	magmatic	(8)
312-1256D-232R1-71	65	20	0	10	6	diabase & gabbro	magmatic	(8)
312-1256D-232R1-82-a	60	24	0	10	6	diabase & gabbro	magmatic	(8)
312-1256D-232R1-82-b	63	14	0	16	6	diabase & gabbro	magmatic	(8)
312-1256D-232R2-37-a	62	26	0	12	0	diabase & gabbro	magmatic	(8)
312-1256D-232R2-37-b	66	25	0	3	5	diabase & gabbro	magmatic	(8)
Hess Deep (East Pacific Rise)								
147-894G-12R2	59	30	0	5	6	gabbro	magmatic	(10)
147-894G-12R3-142	59	37	0	0	4	gabbro	magmatic	(9)
147-894G-13R1	65	29	0	2	4	gabbro	magmatic	(10)
147-894G-11R2	66	27	0	0	7	gabbro	magmatic	(10)
HD69r6_a	84	2	13	0	0	troctolite	magmatic	(11)
HD69r10_a	57	39	0	2	2	olivine-bearing gabbro	magmatic	(11)
HD69r16_a	69	28	0	1	1	olivine oxide gabbro	magmatic	(11)
HD70r2_a	53	19	28	0	0	troctolite	magmatic	(11)
HD70r14_a	52	19	28	0	1	olivine gabbro	magmatic	(11)
HD70r15_a	58	30	0	1	11	olivine gabbro	magmatic	(11)
HD70r17_a	87	10	0	0	3	gabbro	magmatic	(11)
HD70r18_a	54	46	0	0	0	oxide gabbronorite	magmatic	(11)

Title Page

Abstract

Introduction

Conclusions

References

Tables

Figures



Back

Close

Full Screen / Esc

Printer-friendly Version

Interactive Discussion



A database of plagioclase CPO and microstructures

T. Satsukawa et al.

Title Page

Abstract

Introduction

Conclusions

References

Tables

Figures

◀

▶

◀

▶

Back

Close

Full Screen / Esc

Printer-friendly Version

Interactive Discussion



Table 2. (continued).

Sample#	Mode (%)					Rock type	Deformation	Data source (see Table 1)
	Pl	Cpx	OI	Opx	Amp			
HD70r20_a	62	30	0	0	8	oxide gabbro	magmatic	(11)
HD73r2_a	79	7	12	0	1	olivine gabbro	magmatic	(11)
HD73r4_a	62	34	3	1	0	olivine gabbro	magmatic	(11)
HD73r5_a	69	26	1	1	3	olivine gabbro	magmatic	(11)
HD73r9_a	68	29	1	2	0	olivine gabbro	magmatic	(11)
HD73r13_a	59	38	0	2	0	olivine-bearing gabbro	magmatic	(11)
HD73r15_a	45	41	0	1	13	olivine gabbro	magmatic	(11)
HD73r16_a	87	1	11	0	1	troctolite	magmatic	(11)
HD73r18_a	58	25	12	2	3	olivine gabbro	magmatic	(11)
HD73r20_a	79	13	1	0	7	olivine gabbro	magmatic	(11)
HD75r5_a	68	21	7	1	3	olivine gabbro	magmatic	(11)
HD75r8_a	50	49	0	0	0	olivine gabbro	magmatic	(11)
HD75r11_a	58	40	0	1	1	olivine gabbro	magmatic	(11)
HD76r1_a	66	34	0	0	0	olivine gabbro	magmatic	(11)
HD76r3_a	75	24	0	0	0	olivine gabbro	magmatic	(11)
HD76r8_a	58	41	0	1	0	olivine gabbro	magmatic	(11)
HD76r10_a	68	31	0	0	1	olivine gabbro	magmatic	(11)
HD76r11_a	76	21	0	0	3	olivine-bearing gabbro	magmatic	(11)
HD76r14_a	58	22	0	0	20	olivine gabbro	magmatic	(11)
HD78r1_a	60	38	0	0	2	gabbro	magmatic	(11)
HD78r2_a	98	2	0	0	0	oxide gabbro	magmatic	(11)
HD78r5a	62	33	0	3	1	oxide gabbro	magmatic	(11)
HD78r5b	71	26	0	1	2	oxide gabbro	magmatic	(11)
HD78r5x4	64	32	0	2	3	oxide gabbro	magmatic	(11)
HD78r6_a	62	26	9	3	0	gabbro	magmatic	(11)
HD78r7_a	66	19	0	6	9	gabbro	magmatic	(11)
Southwest Indian Ridge, ODP Hole 735B (ODP Leg 176)								
176-735B-93R2-105	59	33	8	0	0	olivine gabbro	magmatic + weak plastic	(12)
176-735B-93R4-45	62	31	7	0	0	gabbro	magmatic + weak plastic	(12)
176-735B-95R2-34	57	38	4	1	1	oxide olivine gabbro	plastic	(12)
176-735B-114R5-108	71	22	2	0	6	oxide gabbro	plastic	(12)
176-735B-116R4-127	68	16	11	2	3	opx-bearing gabbro	magmatic + weak plastic	(12)
176-735B-116R5-2	54	42	3	0	0	gabbro	magmatic + plastic	(12)
176-735B-117R3-15	60	15	16	1	9	olivine gabbro	plastic	(12)

A database of plagioclase CPO and microstructures

T. Satsukawa et al.

Table 2. (continued).

Sample#	Mode (%)				Amp	Rock type	Deformation	Data source (see Table 1)
	Pl	Cpx	Ol	Opx				
176-735B-120R1-16	71	22	2	0	6	olivine gabbro	magmatic	(12)
176-735B-121R2-73	52	18	29	1	0	olivine microgabbro	magmatic	(12)
176-735B-130R3-115	67	18	13	1	0	olivine gabbro	magmatic	(12)
176-735B-132R5-94	46	45	4	4	1	oxide gabbro olivine gabbro	plastic	(12)
176-735B-133R1-35	74	18	3	1	4	oxide gabbro	plastic	(12)
176-735B-133R3-0	63	28	7	1	1	olivine gabbro	plastic	(12)
176-735B-137R6-103	73	13	10	3	1	leucocratic troctolitic microgabbro	plastic	(12)
176-735B-142R5-6	59	22	19	0	0	olivine gabbro	magmatic + weak plastic	(12)
176-735B-147R6-39	71	18	7	1	3	gabbro	plastic	(12)
176-735B-149R2-104	65	29	4	2	0	gabbro	plastic	(12)
176-735B-149R3-63	55	39	4	2	0	gabbro	plastic	(12)
176-735B-149R3-75	60	37	3	0	0	troctolite	plastic	(12)
176-735B-150R5-96	55	35	9	0	0	gabbro	magmatic + plastic	(12)
176-735B-150R5-98	69	24	7	0	0	gabbro	magmatic + plastic	(12)
176-735B-150R5-100	51	43	5	1	0	gabbro	plastic	(12)
176-735B-150R5-102	51	42	7	0	0	gabbro	plastic	(12)
176-735B-153R4-92	61	26	5	8	1	olivine gabbro	magmatic (+ very weak plastic)	(12)
176-735B-154R3-118	54	36	9	0	0	olivine gabbro	magmatic	(12)
176-735B-154R5-42	55	42	3	1	0	olivine gabbro	magmatic + weak plastic	(12)
176-735B-156R5-107	77	20	3	0	0	olivine gabbro	magmatic + plastic	(12)
176-735B-165R3-111	58	32	7	2	0	olivine microgabbro	magmatic	(12)
176-735B-165R3-115	54	36	9	1	0	olivine gabbro	magmatic	(12)
176-735B-167R6-103	68	22	8	2	0	gabbro	magmatic	(12)
176-735B-170R1-99	62	14	23	1	0	disseminated oxide olivine gabbro	plastic	(12)
176-735B-179R5-97	75	15	10	0	1	olivine gabbro	magmatic	(12)
176-735B-189R3-110	58	34	5	3	0	microgabbro and olivine gabbro	magmatic	(12)
176-735B-189R7-94	61	32	4	3	0	gabbro	plastic	(12)
176-735B-189R7-98	67	29	3	1	0	olivine gabbro	plastic	(12)
176-735B-190R4-87	64	27	6	2	0	troctolitic gabbro	magmatic + weak plastic	(12)
176-735B-191R1-36	73	19	6	1	0	leucocratic disseminated oxide microtroctolite	plastic	(12)
176-735B-191R1-39	70	22	6	2	0	olivine gabbro	plastic	(12)
176-735B-206R6-138	48	40	12	0	0	olivine microgabbro	magmatic	(12)
176-735B-209R7-100	67	23	10	0	0	olivine gabbro	magmatic	(12)

Title Page

Abstract

Introduction

Conclusions

References

Tables

Figures

◀

▶

◀

▶

Back

Close

Full Screen / Esc

Printer-friendly Version

Interactive Discussion



Table 2. (continued).

Sample#	Mode (%)				Amp	Rock type	Deformation	Data source (see Table 1)
	Pl	Cpx	Ol	Opx				
Mid Atlantic ridge, ODP Leg 209								
209-1270B-3M1-43	98	2	0	0	0	oxide gabbro	plastic	(8)
209-1275B-16R2-52	64	28	5	4	0	oxide gabbro	magmatic	(8)
209-1275D-43R1-106	55	45	0	0	0	oxide gabbro	magmatic	(8)
Reunion, Cirque de Salazie								
SaG1	56	44	0	0	0	gabbro	magmatic	(15)
SaG2	55	45	0	0	0	gabbro	magmatic	(15)
SaG3	42	58	0	0	0	gabbro	magmatic	(15)
SaG4	18	76	6	0	0	olivine gabbro	magmatic	(15)
SaG5	84	14	2	0	0	olivine gabbro and anorthosite	magmatic	(15)
SaG6	18	73	8	0	0	olivine gabbro	magmatic	(15)
SaG6b	23	69	8	0	0	olivine gabbro	magmatic	(15)
SaG7	50	50	0	0	0	gabbro	magmatic	(15)
SaG8	47	43	10	0	0	olivine gabbro	magmatic	(15)
SaG9	43	51	6	0	0	olivine gabbro	magmatic	(15)
SaG10	15	56	29	0	0	olivine gabbro	magmatic	(15)
SaG11	29	46	26	0	0	olivine gabbro	magmatic	(15)
Brazil, Itabuna and Ribeira belts								
CM08	67	14	0	15	3	charnokite	HT plastic	(14)
CM09	69	15	0	16	0	charnokite	HT plastic	(14)
CM19	86	6	0	7	0	charnokite	HT plastic	(14)
CM20	70	16	0	14	0	charnokite	HT plastic	(14)
CM22	63	20	0	18	0	charnokite	HT plastic	(14)
CM29	60	34	0	1	5	charnokite	HT plastic	(14)
RMB20	99	0	1	0	0	gabbro	magmatic	(14)
RB538						granulite	HT plastic, recrystallized	(13)
RB540						granulite	HT plastic, recrystallized	(13)
RB546						granulite	HT plastic, recrystallized	(13)
RB548						granulite	HT plastic, recrystallized	(13)
RB559						granulite	HT plastic, recrystallized	(13)
RB566						granulite	HT plastic, recrystallized	(13)
RB5E						granulite	HT plastic, recrystallized	(13)
RB607A						granulite	HT plastic, recrystallized	(13)
RB607B						granulite	HT plastic, recrystallized	(13)

**A database of
plagioclase CPO and
microstructures**

T. Satsukawa et al.

Title Page

Abstract

Introduction

Conclusions

References

Tables

Figures



Back

Close

Full Screen / Esc

Printer-friendly Version

Interactive Discussion



SED

5, 1191–1257, 2013

A database of
plagioclase CPO and
microstructures

T. Satsukawa et al.

Title Page

Abstract

Introduction

Conclusions

References

Tables

Figures

◀

▶

◀

▶

Back

Close

Full Screen / Esc

Printer-friendly Version

Interactive Discussion



Table 2. (continued).

Sample#	Mode (%)					Rock type	Deformation	Data source (see Table 1)
	Pl	Cpx	OI	Opx	Amp			
RB609A						granulite	HT plastic, recrystallized	(13)
RB614						granulite	HT plastic, recrystallized	(13)
RB689						granulite	HT plastic, recrystallized	(13)
St Thibéry lava flows								
005							magmatic	(16)
016	98	1	1	0	0		magmatic	(16)
029	100	0	0	0	0		magmatic	(16)
074	60	40	0	0	0		magmatic	(16)
Oklahoma								
89ANOK	100	0	0	0	0	Anorthosite	magmatic	(17)

Table 3. CPO characteristics for the gabbros studied here. I: data from interactive mode; M: data from mapping mode; N: number of measurements; BA: BA index. B, P and A in the CPO type column are Axial-B, type P and Axial-A, respectively.

Sample#	EBSD	N	J	Max density			pfJ			BA	CPO type
				[100]	(010)	(001)	[100]	(010)	(001)		
Oman ophiolite											
86OA20C	I	335	5.4	5.69	8.83	4.87	2.75	2.69	2.69	0.164	B
88OA13	I	117	8.1	4.74	7.27	3.43	2.16	2.75	1.46	0.203	B
88OA14b	I	253	4.9	4.69	8.12	2.94	1.77	2.53	1.27	0.205	B
90OA68	I	147	7.2	5.70	4.62	3.60	2.40	2.13	1.35	0.507	P
90OA77	I	317	9.0	5.74	5.34	4.28	2.31	2.46	1.65	0.495	P
90OF11	I	189	5.6	5.03	5.09	2.88	2.07	1.95	1.22	0.312	B
92OB100b	I	213	5.2	4.05	6.15	2.18	1.82	2.28	1.19	0.199	B
92OB101	I	165	5.2	3.73	4.75	3.13	1.58	1.88	1.29	0.185	B
92OB134	I	165	5.2	3.73	4.75	3.13	1.58	1.88	1.29	0.185	B
92OB139	M	117	9.2	5.12	4.93	5.23	1.86	1.90	1.55	0.384	P weak
92OB140a	I	187	9.0	6.68	9.21	5.23	2.58	1.90	1.55	0.357	B
92OB140c	I	157	7.5	6.33	8.21	4.47	2.03	2.30	1.42	0.497	P
92OB142	I	253	6.7	4.99	9.70	4.00	2.50	3.12	1.53	0.310	B
92OB143	I	171	9.0	5.66	11.55	3.53	2.41	4.42	1.61	0.284	B
93OB157	I	191	6.7	5.70	7.86	3.49	2.29	2.72	1.37	0.264	B
94OB28	I	288	5.8	4.93	9.58	3.23	2.25	3.64	1.37	0.201	B
95OA129	I	426	3.2	4.24	3.36	3.07	1.48	1.39	1.19	0.534	P weak
95OB4	I	1345	2.7	2.72	2.51	1.67	1.30	1.29	1.07	0.599	P
97OB1C	M	1268	2.9	3.24	5.87	1.71	1.64	2.05	1.07	0.265	B
98OB10a	I	519	3.7	3.59	4.13	2.37	1.61	1.92	1.19	0.245	B
98OB10e	I	377	4.1	3.47	4.61	2.37	1.50	2.08	1.22	0.223	B
98OB10g	I	466	3.8	4.29	3.69	2.32	2.01	1.69	1.16	0.843	A
98OB7a	I	824	5.2	4.85	8.70	2.73	2.09	3.65	1.32	0.243	B
98OB8b	I	467	4.2	3.55	4.96	2.32	1.53	2.15	1.21	0.285	B
06OA31b	M	102	8.5	4.14	4.77	4.26	1.56	1.95	1.52	0.346	P weak
07_2_OA_10B	M	5183	4.4	2.66	5.06	12.97	1.86	2.49	1.17	0.591	P
07_2_OA_18b	M	5070	8.7	2.31	4.89	11.78	2.40	4.71	1.48	0.553	P
07_2_OA_18c	M	3690	3.7	2.30	6.24	13.12	1.68	2.23	1.12	0.555	P
07_2_OA_30b	M	1725	3.8	2.53	5.50	16.55	1.98	1.65	1.24	0.602	P
07_2_OA_30h	M	2254	4.9	3.05	5.72	14.48	1.83	2.90	1.21	0.566	P
07_2_OA_37	M	885	4.6	3.37	6.46	19.15	2.10	2.12	1.33	0.735	P
07_2_OA_37b	M	1846	4.0	2.09	4.87	10.96	2.09	2.14	1.18	0.737	P
07_2_OA_41g	M	1213	2.7	2.80	5.82	14.87	1.59	1.25	1.33	0.621	P
07_2_OA_42c	M	3817	2.6	2.82	5.47	13.96	1.35	1.74	1.08	0.661	P
07_2_OA_45c3	M	1392	11.9	2.72	6.34	12.21	2.14	4.54	1.46	0.354	P
07_2_OA_45c4	M	2801	7.9	2.46	5.46	12.38	2.77	5.39	2.00	0.445	P
07_2_OA_66	M	1961	9.1	3.93	4.98	12.65	2.26	5.11	1.52	0.532	P
07_OA_8g_2S	M	3066	2.1	2.56	5.61	14.05	1.20	1.42	1.05	0.712	P
07-2OA13	M	330	3.7	3.87	4.22	3.73	1.32	1.47	1.21	0.553	P weak
07OA20a	M	418	2.5	1.92	2.20	2.15	1.10	1.08	1.08	0.412	P n.i.
07OA20c1	M	2235	1.4	1.70	1.66	1.42	1.07	1.07	1.03	0.514	P weak
07OA20d	M	2873	1.5	1.77	2.52	1.50	1.15	1.22	1.02	0.291	B weak
07OA20e	M	2518	1.5	1.71	2.43	1.47	1.13	1.19	1.02	0.302	B weak

**A database of
plagioclase CPO and
microstructures**

T. Satsukawa et al.

Title Page

Abstract Introduction

Conclusions References

Tables Figures

◀ ▶

◀ ▶

Back Close

Full Screen / Esc

Printer-friendly Version

Interactive Discussion



Table 3. (continued).

Sample#	EBSD	N	J	Max density			pfJ			BA	CPO type
				[100]	(010)	(001)	[100]	(010)	(001)		
Cocos Plate (East-Pacific Rise), ODP Hole 1256D											
312-1256D-202R1-8	M	1925	1.7	1.64	1.91	1.73	1.05	1.07	1.05	0.534	A weak
312-1256D-213R1-52	M	512	4.4	3.78	5.17	3.74	1.27	1.33	1.22	0.502	P weak
312-1256D-223R3-5	M	4289	1.2	1.65	1.31	1.30	1.04	1.02	1.01	0.565	P n.i.
312-1256D-230R1-15	M	633	2.7	2.36	3.03	2.80	1.18	1.32	1.17	0.300	B weak
312-1256D-230R1-73	M	2632	1.6	1.87	2.26	1.53	1.12	1.17	1.03	0.411	B weak
312-1256D-230R1-118-a	M	3007	1.5	2.24	2.92	1.46	1.17	1.23	1.04	0.385	B weak
312-1256D-230R1-118-b	M	846	2.2	2.54	2.60	2.10	1.22	1.18	1.06	0.527	A weak
312-1256D-232R1-71	M	2205	1.3	1.57	1.53	1.37	1.04	1.04	1.02	0.489	P weak
312-1256D-232R1-82-a	M	6965	1.1	1.29	1.26	1.20	1.01	1.01	1.00	0.686	P n.i.
312-1256D-232R1-82-b	M	2463	1.4	1.38	1.64	1.63	1.03	1.03	1.04	0.371	P n.i.
312-1256D-232R2-37-a	M	5952	1.2	1.51	1.36	1.33	1.03	1.04	1.01	0.791	P n.i.
312-1256D-232R2-37-b	M	1473	1.4	1.54	1.52	1.52	1.03	1.03	1.03	0.479	P weak
Hess Deep (East Pacific Rise)											
147-894G-12R2	M	896	2.5	2.93	3.39	1.86	1.36	1.39	1.09	0.538	P
147-894G-12R3-142	M	442	3.5	3.10	5.49	2.53	1.51	2.18	1.18	0.275	B
147-894G-13R1	M	800	2.1	2.66	2.86	1.88	1.18	1.19	1.06	0.276	B n.i.
147-894G-11R2	M	389	3.2	2.95	3.47	2.83	1.27	1.39	1.15	0.480	P weak
HD69r6_a	M	412	2.8	2.36	2.34	2.19	1.12	1.15	1.09	0.609	P n.i.
HD69r10_a	M	572	2.7	2.86	3.40	2.62	1.22	1.26	1.10	0.159	P weak
HD69r16_a	M	1503	1.7	2.11	2.43	1.54	1.16	1.21	1.04	0.599	P weak
HD70r2_a	M	674	2.3	2.31	3.29	2.10	1.20	1.41	1.11	0.325	B
HD70r14_a	M	984	2.1	2.73	3.67	1.60	1.34	1.41	1.06	0.179	B
HD70r15_a	M	245	4.4	3.18	3.73	3.09	1.35	1.67	1.26	0.215	B
HD70r17_a	M	2437	1.9	2.35	3.80	1.57	1.34	1.54	1.04	0.225	B
HD70r18_a	M	209	7.6	4.13	5.49	3.69	1.63	1.83	1.42	0.477	B weak
HD70r20_a	M	68	14.3							0.533	
HD73r2_a	M	2916	2.1	2.19	4.23	1.84	1.31	1.76	1.10	0.225	B
HD73r4_a	M	675	2.8	3.34	4.39	2.21	1.42	1.67	1.12	0.271	B
HD73r5_a	M	1050	2.2	2.66	3.23	1.62	1.29	1.43	1.05	0.300	B
HD73r9_a	M	1400	2.4	2.89	4.44	1.83	1.38	1.73	1.05	0.257	B
HD73r13_a	M	824	2.2	3.04	3.15	1.67	1.41	1.35	1.05	0.401	B
HD73r15_a	M	265	3.8	3.82	4.46	2.16	1.43	1.64	1.17	0.173	P weak
HD73r16_a	M	1315	2.6	2.41	5.03	2.21	1.36	2.01	1.16	0.085	B
HD73r18_a	M	445	3.3	3.09	4.92	2.15	1.49	1.71	1.10	0.253	B
HD73r20_a	M	357	3.6	3.49	4.54	2.14	1.46	1.74	1.14	0.317	B
HD75r5_a	M	1454	2.2	2.61	3.54	1.83	1.31	1.51	1.07	0.248	B
HD75r8_a	M	943	1.9	2.25	2.42	1.84	1.15	1.25	1.06	0.306	P weak
HD75r11_a	M	312	3.9	3.63	5.67	2.35	1.70	2.03	1.19	0.174	B
HD76r1_a	M	486	3.7	3.87	5.82	2.41	1.87	2.09	1.19	0.380	B
HD76r3_a	M	409	6.0	4.31	8.50	3.13	2.11	3.40	1.29	0.360	B
HD76r8_a	M	1138	3.5	3.69	7.47	1.96	1.83	2.68	1.16	0.193	B

A database of plagioclase CPO and microstructures

T. Satsukawa et al.

Title Page

Abstract

Introduction

Conclusions

References

Tables

Figures



Back

Close

Full Screen / Esc

Printer-friendly Version

Interactive Discussion



Table 3. (continued).

Sample#	EBSD	N	J	Max density			pfJ		BA	CPO type	
				[100]	(010)	(001)	[100]	(010)			(001)
HD76r10_a	M	517	2.6	2.79	2.84	1.90	1.23	1.20	1.07	0.273	B
HD76r11_a	M	939	1.9	1.94	2.14	1.80	1.18	1.19	1.04	0.181	B
HD76r14_a	M	706	2.5	3.32	3.19	1.65	1.40	1.44	1.07	0.559	P
HD78r1_a	M	1091	1.8	2.50	2.40	1.81	1.25	1.23	1.05	0.304	B
HD78r2_a	M	145	6.4	3.15	2.88	3.53	1.31	1.34	1.34	0.742	P n.i.
HD78r5a	M	1650	1.7	2.22	2.61	1.57	1.33	1.27	1.03	0.244	B
HD78r5b	M	250	4.0	2.81	2.54	3.00	1.27	1.30	1.25	0.671	P n.i.
HD78r5x4	M	317	3.2	2.27	2.58	2.63	1.12	1.19	1.21	0.582	P n.i.
HD78r6_a	M	235	4.9	4.20	4.66	2.71	1.79	1.74	1.19	0.442	P
HD78r7_a	M	1276	1.6	1.75	1.72	1.55	1.07	1.05	1.03	0.794	P n.i.
Southwest Indian Ridge, ODP Hole 735B (ODP Leg 176)											
176-735B-93R2-105	I	124	7.5	3.92	4.00	3.08	1.76	1.81	1.31	0.137	P
176-735B-93R4-45	M	1173	2.8	2.99	3.56	1.78	1.53	1.57	1.08	0.438	P
176-735B-95R2-34	M	9010	2.4	2.35	2.10	1.55	1.21	1.20	1.05	0.669	A weak
176-735B-114R5-108	M	2305	2.6	3.76	1.92	2.62	1.65	1.20	1.21	0.755	A
176-735B-116R4-127	I	855	4.0	3.20	3.73	2.42	1.30	1.31	1.20	0.596	B weak
176-735B-116R5-2	M	1098	3.1	3.64	2.40	2.51	1.50	1.29	1.14	0.550	P
176-735B-117R3-15	I	1090	3.2	3.93	2.68	2.40	1.63	1.42	1.15	0.792	P
176-735B-120R1-16	M	1531	2.3	2.41	2.04	1.56	1.15	1.19	1.04	0.479	P weak
176-735B-121R2-73	M	545	2.6	2.43	2.48	1.83	1.17	1.17	1.07	0.213	B weak
176-735B-130R3-115	I	452	3.7	3.84	3.64	1.81	1.58	1.55	1.08	0.538	P
176-735B-132R5-94	M	161	5.8	2.90	2.92	3.42	1.26	1.22	1.34	0.427	P n.i.
176-735B-133R1-35	M	2871	2.7	2.94	2.55	1.70	1.43	1.26	1.08	0.512	P
176-735B-133R3-0	M	1418	3.0	3.96	2.70	1.84	1.69	1.37	1.11	0.680	A
176-735B-137R6-103	M	810	2.7	2.65	2.76	1.88	1.24	1.23	1.07	0.423	B weak
176-735B-142R5-6	M	913	4.2	4.04	2.68	2.52	1.70	1.40	1.23	0.849	A
176-735B-147R6-39	I	929	2.9	2.72	2.21	1.96	1.25	1.22	1.11	0.356	B weak
176-735B-149R2-104	M	5440	3.3	4.95	3.04	1.90	2.11	1.47	1.16	0.653	A
176-735B-149R3-63	M	7144	4.7	5.78	2.88	2.24	2.52	1.52	1.20	0.652	A
176-735B-149R3-75	M	4448	2.0	2.20	1.76	1.93	1.15	1.06	1.11	0.567	A
176-735B-150R5-96	M	180	8.8	2.28	2.37	1.81	1.17	1.21	1.06	0.472	B weak
176-735B-150R5-98	M	255	4.7	3.03	2.63	2.56	1.40	1.43	1.21	0.214	B weak
176-735B-150R5-100	M	1823	2.4	2.34	2.13	1.83	1.15	1.13	1.08	0.440	B weak
176-735B-150R5-102	M	626	3.4	2.68	2.71	1.66	1.25	1.21	1.13	0.259	P weak
176-735B-153R4-92	M	1125	3.2	3.78	2.63	2.06	1.74	1.37	1.12	0.658	A
176-735B-154R3-118	M	336	4.7	3.59	4.05	2.18	1.61	1.56	1.13	0.577	P weak
176-735B-154R5-42	M	441	4.0	3.62	2.86	2.37	1.56	1.41	1.13	0.608	A
176-735B-156R5-107	M	693	4.0	4.31	4.09	2.09	1.77	1.72	1.10	0.336	P
176-735B-165R3-111	M	424	3.7	2.68	4.56	2.35	1.55	1.90	1.11	0.182	B
176-735B-165R3-115	M	899	2.7	2.82	2.95	1.53	1.40	1.46	1.03	0.458	B weak
176-735B-167R6-103	I	657	3.1	2.93	3.33	2.13	1.23	1.32	1.09	0.433	B weak

A database of plagioclase CPO and microstructures

T. Satsukawa et al.

Title Page

Abstract

Introduction

Conclusions

References

Tables

Figures



Back

Close

Full Screen / Esc

Printer-friendly Version

Interactive Discussion



Table 3. (continued).

Sample#	EBSD	N	J	Max density			pfJ			BA	CPO type
				[100]	(010)	(001)	[100]	(010)	(001)		
176-735B-170R1-99	M	1229	3.3	2.55	2.87	1.81	1.47	1.38	1.08	0.096	B
176-735B-179R5-97	I	420	9.7	6.49	5.76	6.46	1.71	1.99	1.80	0.369	P weak
176-735B-189R3-110	M	107	8.8	4.53	7.07	4.20	1.65	2.00	1.46	0.290	B weak
176-735B-189R7-94	M	4683	2.7	4.01	3.29	1.85	1.71	1.52	1.10	0.550	p
176-735B-189R7-98	M	498	4.7	3.83	4.24	2.32	1.71	1.79	1.14	0.374	P
176-735B-190R4-87	I	935	2.9	2.61	2.68	1.87	1.34	1.34	1.09	0.392	B weak
176-735B-191R1-36	M	524	3.6	2.45	2.31	2.61	1.15	1.24	1.24	0.445	P weak
176-735B-191R1-39	M	1147	4.0	5.53	4.08	2.32	2.32	1.68	1.26	0.603	B
176-735B-206R6-138	M	310	5.0	4.25	3.97	2.74	1.44	1.61	1.18	0.298	B weak
176-735B-209R7-100	I	489	4.3	3.01	3.29	2.56	1.30	1.29	1.20	0.776	P n.i.
Mid Atlantic ridge, ODP Leg 209											
209-1270B-3M1-43	I	93	10.3							0.330	
209-1275B-16R2-52	I	285	4.0	2.82	2.89	1.15	1.34	1.34	1.16	0.418	P weak
209-1275D-43R1-106	I	127	8.4	4.25	4.52	3.85	1.67	1.91	1.45	0.472	P weak
Reunion, Cirque de Salazie											
SaG1	M	24									
SaG2	M	1529	2.6	2.44	3.73	1.57	1.42	1.67	1.04	0.160	B
SaG3	M	656	2.4	1.88	3.03	2.16	1.11	1.28	1.13	0.461	B weak
SaG4	M	715	3.3	2.75	3.69	2.19	1.47	1.86	1.12	0.184	B
SaG5	M	50	12.6							0.405	
SaG6	M	705	2.2	2.00	2.37	1.62	1.17	1.22	1.05	0.246	B weak
SaG6b	M	2323	1.5	1.76	1.85	1.45	1.09	1.12	1.02	0.361	B weak
SaG7	M	279	4.1	3.41	5.18	2.20	1.65	1.80	1.14	0.128	B
SaG8	M	2874	2.3	2.78	4.84	1.77	1.49	1.85	1.10	0.176	B
SaG9	M	3178	2.1	2.90	3.92	1.82	1.47	1.67	1.07	0.269	B
SaG10	M	1391	1.9	2.33	3.07	1.41	1.27	1.34	1.03	0.271	B weak
SaG11	M	795	1.9	1.82	2.17	1.71	1.10	1.12	1.05	0.322	B weak
Brazil, Itabuna and Ribeira belts											
CM08	I	523	4.7	3.99	4.45	2.93	1.43	1.58	1.16	0.198	B weak
CM09	I	538	2.8	2.77	2.73	2.52	1.23	1.19	1.12	0.553	P weak
CM19	I	947	5.0	3.79	5.91	3.06	1.54	1.55	1.40	0.185	B weak
CM20	I	490	3.2	3.75	3.73	3.24	1.31	1.20	1.21	0.238	P weak
CM22	I	481	3.3	3.42	3.43	2.88	1.27	1.30	1.18	0.352	P weak
CM29	I	193	4.3	3.12	2.49	2.83	1.35	1.16	1.23	0.519	P n.i.
RMB20	I	148	6.1	3.25	3.10	3.03	1.44	1.47	1.43	0.341	B weak
RB538	I	203	5.5	3.57	4.60	3.23	1.44	1.47	1.41	0.191	B weak
RB540	I	256	4.4	2.66	2.76	2.98	1.29	1.31	1.19	0.657	P n.i.
RB546	I	362	3.2	1.98	2.28	2.89	1.16	1.18	1.32	0.437	B weak
RB548	I	282	3.8	1.98	2.28	2.89	1.16	1.18	1.32	0.619	P n.i.
RB559	I	372	3.9	2.42	3.42	2.76	1.33	1.43	1.27	0.234	B

Title Page

Abstract

Introduction

Conclusions

References

Tables

Figures

⏪

⏩

◀

▶

Back

Close

Full Screen / Esc

Printer-friendly Version

Interactive Discussion



A database of plagioclase CPO and microstructures

T. Satsukawa et al.

Title Page

Abstract

Introduction

Conclusions

References

Tables

Figures

◀

▶

◀

▶

Back

Close

Full Screen / Esc

Printer-friendly Version

Interactive Discussion



Table 3. (continued).

Sample#	EBSD	N	J	Max density			pfJ			BA	CPO type
				[100]	(010)	(001)	[100]	(010)	(001)		
RB566	I	289	4.0	2.38	2.37	3.22	1.22	1.16	1.43	0.616	P n.i.
RB5E	I	306	4.2	2.97	2.85	2.14	1.31	1.30	1.18	0.191	B weak
RB607A	I	505	4.3	2.41	3.46	2.60	1.34	1.48	1.21	0.383	B weak
RB607B	I	351	3.3	2.79	2.18	2.32	1.19	1.18	1.21	0.520	P n.i.
RB609A	I	146	5.5	2.46	2.88	3.89	1.33	1.36	1.54	0.167	B n.i.
RB614	I	249	4.1	2.22	2.31	2.96	1.20	1.22	1.33	0.168	B weak
RB689	I	362	4.4	4.10	4.09	2.64	1.69	1.65	1.26	0.638	A weak
St Thibéry lava flows											
005	I	19									
016	I	313	4.0	3.10	3.97	3.00	1.34	1.73	1.22		
029	I	164	4.6	3.41	4.15	5.29	1.38	1.68	1.80	0.702	P
074	I	231	3.9	2.91	3.63	2.90	1.41	1.56	1.22	0.621	P
Oklahoma											
89ANOK	I	370	13.6	7.63	24.33	4.88	2.95	10.68	2.37	0.144	B

Table 4. Elastic symmetry decomposition for the gabbros studied here. Tri: triclinic; Mono: monoclinic; Ortho: orthorhombic; Tetra: tetragonal; Hex: hexagonal; Iso: isotropic, respectively.

Sample#	Tri	Mono	Ortho	Tetra	Hex	Iso
Oman ophiolite						
86OA20C	2.801	2.076	0.910	0.213	0.940	93.060
88OA13	1.973	0.592	2.376	0.503	0.420	94.138
88OA14b	2.502	0.941	1.198	0.025	0.537	94.796
90OA68	1.611	0.765	4.068	0.380	0.052	93.123
90OA77	3.141	0.294	3.593	0.295	0.160	92.517
90OF11	1.828	0.308	1.943	0.376	1.011	94.534
92OB100b	1.746	0.259	2.232	0.063	1.001	94.700
92OB101	1.886	0.506	2.019	0.198	0.461	94.931
92OB134	1.886	0.506	2.019	0.198	0.461	94.931
92OB139	3.306	0.238	1.733	0.105	0.086	94.532
92OB140a	3.054	0.057	4.341	0.186	0.152	92.210
92OB140c	3.511	0.087	2.465	0.034	0.148	93.756
92OB142	2.447	0.276	4.013	0.510	0.622	92.132
92OB143	2.366	3.629	2.572	0.007	0.127	91.298
93OB157	1.828	0.673	3.752	0.128	0.236	93.383
94OB28	1.260	0.884	4.285	0.265	0.331	92.976
95OA129	3.092	0.675	0.054	0.004	0.285	95.889
95OB4	2.212	0.076	1.764	0.023	0.182	95.744
97OB1C	1.564	0.247	2.128	0.117	1.675	94.269
98OB10a	1.540	0.427	3.021	0.005	0.103	94.904
98OB10e	1.447	0.351	2.842	0.177	0.069	95.115
98OB10g	4.031	0.125	2.271	0.056	0.170	93.347
98OB7a	5.199	1.418	1.162	0.030	0.028	92.164
98OB8b	3.067	0.424	2.015	0.152	0.144	94.198
06OA31b	3.093	0.123	1.428	0.375	0.020	94.961
07_2_OA_10B	1.217	0.142	1.117	0.826	2.317	94.381
07_2_OA_18b	1.645	0.188	0.920	0.952	1.375	94.921
07_2_OA_18c	1.266	0.297	1.015	1.408	1.943	94.072
07_2_OA_30b	1.279	0.200	1.167	0.686	2.741	93.928
07_2_OA_30h	1.237	0.228	1.232	0.697	2.832	93.774
07_2_OA_37	1.421	0.402	1.284	1.127	3.193	92.574
07_2_OA_37b	1.004	0.171	0.848	1.316	2.049	94.612
07_2_OA_41g	1.093	0.251	1.278	1.082	2.698	93.598

**A database of
plagioclase CPO and
microstructures**

T. Satsukawa et al.

Title Page

Abstract

Introduction

Conclusions

References

Tables

Figures



Back

Close

Full Screen / Esc

Printer-friendly Version

Interactive Discussion



Table 4. (continued).

Sample#	Tri	Mono	Ortho	Tetra	Hex	Iso
07_2_OA_42c	1.133	0.268	1.501	0.750	2.414	93.934
07_2_OA_45c3	2.154	0.289	0.209	2.146	1.563	93.640
07_2_OA_45c4	2.357	0.221	0.494	1.144	1.457	94.328
07_2_OA_66	2.890	0.266	0.993	0.416	1.993	93.442
07_OA_8g_2S	0.664	0.162	1.300	1.098	2.477	94.300
07-2OA13	2.582	0.508	0.506	0.001	0.035	96.368
07OA20a	0.629	0.395	0.042	0.284	0.146	98.503
07OA20c1	1.284	0.023	0.104	0.001	0.333	98.255
07OA20d	1.490	0.363	0.280	0.008	0.654	97.205
07OA20e	1.260	0.403	0.334	0.006	0.582	97.415
Cocos Plate (East-Pacific Rise), ODP Hole 1256D						
312-1256D-202R1-8	0.922	0.088	0.172	0.002	0.049	98.768
312-1256D-213R1-52	2.958	0.013	0.593	0.014	0.245	96.176
312-1256D-223R3-5	1.006	0.096	0.052	0.009	0.071	98.766
312-1256D-230R1-15	1.603	0.017	0.668	0.249	0.548	96.914
312-1256D-230R1-73	2.499	0.094	0.007	0.027	0.057	97.316
312-1256D-230R1-118-a	2.177	0.116	0.028	0.010	0.046	97.623
312-1256D-230R1-118-b	2.243	0.104	0.217	0.035	0.033	97.368
312-1256D-232R1-71	0.602	0.156	0.049	0.000	0.410	98.783
312-1256D-232R1-82-a	0.281	0.096	0.003	0.002	0.424	99.193
312-1256D-232R1-82-b	0.678	0.241	0.070	0.025	0.054	98.933
312-1256D-232R2-37-a	0.665	0.040	0.028	0.000	0.584	98.682
312-1256D-232R2-37-b	0.740	0.023	0.065	0.007	0.135	99.030
Hess Deep (East Pacific Rise)						
147-894G-12R2	0.918	0.568	1.090	0.015	1.226	96.183
147-894G-12R3-142	2.714	1.839	0.873	0.000	0.086	94.488
147-894G-13R1	0.841	0.105	0.061	0.063	0.848	98.082
147-894G-11R2	1.352	0.367	1.175	0.010	0.248	96.849
HD69r6_a	0.835	0.262	0.077	0.011	0.455	98.361
HD69r10_a	1.386	0.119	0.650	0.006	0.042	97.797
HD69r16_a	2.026	0.013	0.003	0.004	0.557	97.397
HD70r2_a	1.420	0.292	0.022	0.016	1.429	96.822
HD70r14_a	1.777	0.112	1.660	0.095	0.022	96.335

**A database of
plagioclase CPO and
microstructures**

T. Satsukawa et al.

Title Page

Abstract

Introduction

Conclusions

References

Tables

Figures

◀

▶

◀

▶

Back

Close

Full Screen / Esc

Printer-friendly Version

Interactive Discussion



Table 4. (continued).

Sample#	Tri	Mono	Ortho	Tetra	Hex	Iso
HD70r15_a	2.981	0.707	0.049	0.057	0.098	96.109
HD70r17_a	2.886	0.044	0.624	0.015	0.325	96.107
HD70r18_a	1.793	1.278	0.258	0.031	0.735	95.906
HD70r20_a	3.167	0.905	0.423	0.004	0.578	94.923
HD73r2_a	2.471	0.601	1.230	0.014	0.016	95.667
HD73r4_a	3.170	0.012	0.638	0.131	0.571	95.477
HD73r5_a	2.450	0.242	0.419	0.003	0.711	96.174
HD73r9_a	2.714	1.589	0.099	0.088	0.113	95.398
HD73r13_a	1.602	0.126	1.276	0.011	1.075	95.910
HD73r15_a	3.036	0.066	0.054	0.009	0.296	96.540
HD73r16_a	2.587	1.336	0.019	0.132	0.311	95.615
HD73r18_a	2.441	0.341	0.739	0.021	0.908	95.551
HD73r20_a	3.493	0.142	0.645	0.014	0.191	95.515
HD75r5_a	3.008	0.652	0.495	0.004	0.010	95.830
HD75r8_a	1.565	0.535	0.121	0.004	0.502	97.272
HD75r11_a	2.439	0.522	1.205	0.002	1.201	94.632
HD76r1_a	3.268	0.925	0.213	0.094	1.732	93.767
HD76r3_a	6.376	0.063	0.256	0.324	0.844	92.138
HD76r8_a	2.279	0.053	2.721	0.643	0.490	93.815
HD76r10_a	2.369	0.307	0.088	0.041	0.012	97.183
HD76r11_a	2.539	0.107	0.053	0.001	0.070	97.230
HD76r14_a	3.132	0.068	0.572	0.005	0.454	95.770
HD78r1_a	1.560	0.428	0.675	0.001	0.355	96.981
HD78r2_a	1.978	0.285	0.032	0.000	0.321	97.383
HD78r5a	2.153	0.787	0.010	0.007	0.125	96.918
HD78r5b	1.897	0.296	0.157	0.097	0.219	97.334
HD78r5x4	1.375	0.256	0.510	0.142	0.289	97.429
HD78r6_a	2.917	0.937	0.012	0.020	0.855	95.260
Southwest Indian Ridge, ODP Hole 735B (ODP Leg 176)						
176-735B-93R2-105	3.350	0.915	0.059	0.036	0.078	95.562
176-735B-93R4-45	2.425	1.631	0.070	0.001	0.073	95.801
176-735B-95R2-34	2.057	0.328	0.145	0.054	0.259	97.158
176-735B-114R5-108	1.007	2.842	0.061	0.015	0.227	95.849
176-735B-116R4-127	2.710	0.471	0.412	0.007	0.188	96.211

**A database of
plagioclase CPO and
microstructures**

T. Satsukawa et al.

Title Page

Abstract

Introduction

Conclusions

References

Tables

Figures



Back

Close

Full Screen / Esc

Printer-friendly Version

Interactive Discussion



Table 4. (continued).

Sample#	Tri	Mono	Ortho	Tetra	Hex	Iso
176-735B-116R5-2	2.009	1.522	0.068	0.032	0.126	96.244
176-735B-117R3-15	2.439	0.352	1.299	0.055	0.283	95.572
176-735B-120R1-16	1.237	0.303	0.133	0.001	0.987	97.339
176-735B-121R2-73	0.888	1.126	0.018	0.121	0.229	97.618
176-735B-130R3-115	2.173	1.068	0.976	0.005	0.051	95.727
176-735B-132R5-94	1.730	0.165	0.458	0.045	0.562	97.041
176-735B-133R1-35	1.839	0.599	0.715	0.041	0.312	96.494
176-735B-133R3-0	3.677	0.069	0.062	0.003	0.664	95.526
176-735B-137R6-103	2.196	0.368	0.150	0.000	0.034	97.252
176-735B-142R5-6	4.511	0.368	0.147	0.002	0.006	94.966
176-735B-147R6-39	2.280	0.514	0.202	0.000	0.223	96.782
176-735B-149R2-104	4.135	0.036	0.493	0.012	0.415	94.910
176-735B-149R3-63	4.471	0.227	1.176	0.028	0.093	94.004
176-735B-149R3-75	1.213	0.210	0.554	0.008	0.083	97.933
176-735B-150R5-96	1.650	1.217	0.153	0.039	0.533	96.408
176-735B-150R5-98	1.322	0.746	0.265	0.042	0.082	97.545
176-735B-150R5-100	1.788	1.502	1.050	0.016	0.036	95.608
176-735B-150R5-102	1.497	0.882	0.128	0.150	0.068	97.275
176-735B-153R4-92	4.858	0.007	0.142	0.003	0.008	94.983
176-735B-154R3-118	4.858	0.007	0.142	0.003	0.008	94.983
176-735B-154R5-42	3.875	0.012	0.149	0.000	0.183	95.782
176-735B-156R5-107	0.678	4.025	0.058	0.015	0.033	95.190
176-735B-165R3-111	2.740	1.344	0.333	0.059	0.004	95.521
176-735B-165R3-115	1.684	1.746	0.002	0.004	0.021	96.543
176-735B-167R6-103	0.704	0.107	0.957	0.125	0.896	97.211
176-735B-170R1-99	0.737	2.113	0.165	0.048	0.731	96.205
176-735B-179R5-97	1.826	0.413	1.208	0.854	0.225	95.474
176-735B-189R3-110	2.146	0.211	0.616	0.007	1.794	95.226
176-735B-189R7-94	1.047	2.077	1.326	0.009	0.160	95.382
176-735B-189R7-98	1.824	3.036	0.011	0.007	0.024	95.099
176-735B-190R4-87	3.107	0.182	0.188	0.083	0.257	96.183
176-735B-191R1-36	2.294	0.070	0.135	0.000	0.214	97.287
176-735B-191R1-39	4.023	1.280	0.611	0.022	0.069	93.996
176-735B-206R6-138	1.782	0.023	1.026	0.103	0.304	96.762
176-735B-209R7-100	1.747	0.539	0.364	0.143	0.116	97.092

SED

5, 1191–1257, 2013

A database of plagioclase CPO and microstructures

T. Satsukawa et al.

Title Page

Abstract

Introduction

Conclusions

References

Tables

Figures



Back

Close

Full Screen / Esc

Printer-friendly Version

Interactive Discussion



Table 4. (continued).

Sample#	Tri	Mono	Ortho	Tetra	Hex	Iso
Mid Atlantic ridge, ODP Leg 209						
209-1270B-3M1-43	2.451	1.005	0.895	0.071	0.226	95.352
209-1275B-16R2-52	1.492	1.250	0.302	0.044	0.008	96.904
209-1275D-43R1-106	2.170	2.260	0.270	0.043	0.222	95.035
Reunion, Cirque de Salazie						
SaG2	1.519	0.100	1.950	0.107	0.957	95.368
SaG3	1.186	0.156	0.666	0.001	0.640	97.351
SaG4	2.840	0.894	0.933	0.023	0.194	95.118
SaG5	2.740	1.042	0.072	0.377	0.342	95.428
SaG6	0.904	0.159	1.071	0.002	0.457	97.406
SaG6b	0.731	0.076	0.807	0.003	0.603	97.780
SaG7	1.802	0.130	1.889	0.002	0.459	95.717
SaG8	1.443	0.184	2.789	0.052	0.094	95.437
SaG9	2.541	0.742	1.195	0.007	0.018	95.497
SaG10	1.597	0.912	0.033	0.007	0.759	96.691
SaG11	1.350	0.088	0.139	0.036	0.403	97.985
Brazil, Itabuna and Ribeira belts						
CM08	1.608	1.302	0.879	0.000	0.148	96.062
CM09	1.672	0.498	0.390	0.002	0.047	97.391
CM19	2.786	0.160	0.116	0.004	1.590	95.344
CM20	1.531	0.582	0.146	0.010	0.425	97.307
CM22	1.843	0.529	0.027	0.001	0.420	97.180
CM29	1.609	0.572	0.254	0.026	0.041	97.497
RMB20	2.900	0.351	0.406	0.053	0.060	96.230
RB538	3.228	0.554	1.646	0.001	0.624	93.947
RB540	1.395	0.310	0.344	0.003	0.527	97.421
RB546	4.182	0.148	0.064	0.070	0.038	95.499
RB548	1.158	0.575	0.588	0.212	0.314	97.153
RB559	2.037	1.240	0.850	0.088	0.646	95.140
RB566	1.527	0.660	0.760	0.126	0.209	96.718
RB5E	2.836	0.694	0.128	0.024	0.340	95.978
RB607A	2.837	0.408	0.218	0.036	0.021	96.481
RB607B	1.673	0.483	0.070	0.070	0.451	97.254

**A database of
plagioclase CPO and
microstructures**

T. Satsukawa et al.

Title Page

Abstract

Introduction

Conclusions

References

Tables

Figures

◀

▶

◀

▶

Back

Close

Full Screen / Esc

Printer-friendly Version

Interactive Discussion



A database of plagioclase CPO and microstructures

T. Satsukawa et al.

Title Page

Abstract

Introduction

Conclusions

References

Tables

Figures

◀

▶

◀

▶

Back

Close

Full Screen / Esc

Printer-friendly Version

Interactive Discussion



Table 4. (continued).

Sample#	Tri	Mono	Ortho	Tetra	Hex	Iso
RB609A	3.964	0.223	0.607	0.012	0.452	94.742
RB614	1.525	0.297	0.381	0.000	0.317	97.479
RB689	3.379	1.300	0.333	0.008	0.410	94.570
St Thibéry lava flows						
029	3.286	1.198	0.763	0.008	0.583	94.161
074	2.840	0.836	0.698	0.005	0.142	95.478
Oklahoma						
89ANOK	2.092	0.094	5.153	3.028	0.721	88.912

Table 5. Seismic properties (velocity and anisotropy) calculated as plagioclase 100% using one point per grain data for gabbros studied here. Vp: P-wave; AVp: P-wave anisotropy; AVs: S-wave anisotropy, respectively.

Sample#	Vp Max (km s ⁻¹)	Vp Min (km s ⁻¹)	Avp (%)	AVs Max (%)	AVs Min (%)	Vs1 max (km s ⁻¹)	Vs1 min (km s ⁻¹)	Vs2 max (km s ⁻¹)	Vs2 min (km s ⁻¹)
Oman ophiolite									
86OA20C	7.05	6.53	7.70	8.18	0.03	3.76	3.48	3.51	3.45
88OA13	6.98	6.55	6.40	7.13	0.03	3.71	3.49	3.61	3.43
88OA14b	6.95	6.54	6.00	5.99	0.17	3.71	3.50	3.54	3.43
90OA68	6.99	6.44	8.30	7.57	0.15	3.71	3.44	3.57	3.42
90OA77	7.01	6.41	8.80	10.52	0.14	3.79	3.47	3.56	3.40
90OF11	6.94	6.50	6.60	5.55	0.25	3.67	3.50	3.58	3.44
92OB100b	6.94	6.51	6.40	4.76	0.22	3.63	3.51	3.57	3.45
92OB101	6.95	6.55	6.00	6.72	0.17	3.71	3.48	3.56	3.45
92OB134	6.95	6.55	6.00	6.72	0.17	3.71	3.48	3.56	3.45
92OB139	6.94	6.51	6.50	6.86	0.17	3.71	3.48	3.59	3.41
92OB140a	7.05	6.38	10.00	9.49	0.06	3.79	3.47	3.53	3.41
92OB140c	6.94	6.42	7.70	8.51	0.00	3.77	3.49	3.54	3.43
92OB142	7.09	6.48	9.00	10.87	0.17	3.83	3.46	3.53	3.39
92OB143	7.12	6.40	10.60	10.41	0.09	3.78	3.48	3.56	3.35
93OB157	7.01	6.47	8.10	7.68	0.03	3.75	3.50	3.54	3.43
94OB28	7.07	6.47	8.80	7.29	0.06	3.74	3.48	3.52	3.45
95OA129	6.86	6.51	5.20	4.52	0.06	3.65	3.51	3.55	3.48
95OB4	6.86	6.49	5.50	3.88	0.08	3.63	3.52	3.56	3.49
97OB1C	6.98	6.48	7.50	4.63	0.03	3.65	3.49	3.55	3.47
98OB10a	6.93	6.50	6.40	5.54	0.03	3.66	3.53	3.55	3.45
98OB10e	6.93	6.53	5.90	5.68	0.14	3.64	3.51	3.59	3.44
98OB10g	6.92	6.40	7.90	6.92	0.09	3.69	3.48	3.54	3.44
98OB7a	7.07	6.43	9.60	8.14	0.06	3.72	3.48	3.56	3.40
98OB8b	6.97	6.48	7.30	6.03	0.03	3.71	3.47	3.55	3.47
06OA31b	6.89	6.52	5.60	5.50	0.11	3.65	3.49	3.62	3.43
07-2OA13	6.83	6.53	4.50	3.68	0.03	3.65	3.52	3.55	3.48
07OA20a	6.74	6.64	1.40	2.16	0.03	3.60	3.53	3.57	3.49
07OA20c1	6.75	6.60	2.10	1.81	0.03	3.58	3.53	3.55	3.51
07OA20d	6.81	6.60	3.10	2.29	0.06	3.59	3.52	3.56	3.50
07OA20e	6.82	6.59	3.60	2.45	0.11	3.60	3.52	3.55	3.51

A database of plagioclase CPO and microstructures

T. Satsukawa et al.

Title Page

Abstract

Introduction

Conclusions

References

Tables

Figures

◀

▶

◀

▶

Back

Close

Full Screen / Esc

Printer-friendly Version

Interactive Discussion



Table 5. (continued).

Sample#	Vp Max (km s ⁻¹)	Vp Min (km s ⁻¹)	Avp (%)	AVs Max (%)	AVs Min (%)	Vs1 max (km s ⁻¹)	Vs1 min (km s ⁻¹)	Vs2 max (km s ⁻¹)	Vs2 min (km s ⁻¹)
Cocos Plate (East-Pacific Rise), ODP Hole 1256D									
312-1256D-202R1-8	6.72	6.64	1.10	1.69	0.06	3.58	3.52	3.56	3.51
312-1256D-213R1-52	6.88	6.56	4.70	5.18	0.03	3.67	3.50	3.56	3.47
312-1256D-223R3-5	6.72	6.62	1.50	1.19	0.03	3.57	3.54	3.55	3.52
312-1256D-230R1-15	6.79	6.56	3.50	4.33	0.11	3.62	3.50	3.57	3.45
312-1256D-230R1-73	6.81	6.60	3.10	2.80	0.03	3.59	3.52	3.57	3.49
312-1256D-230R1-118-a	6.78	6.59	2.80	2.25	0.00	3.60	3.53	3.55	3.51
312-1256D-230R1-118-b	6.77	6.58	2.90	3.48	0.06	3.60	3.51	3.56	3.46
312-1256D-232R1-71	6.73	6.63	1.50	1.35	0.03	3.57	3.53	3.55	3.52
312-1256D-232R1-82-a	6.71	6.64	1.00	0.99	0.00	3.56	3.54	3.55	3.53
312-1256D-232R1-82-b	6.73	6.65	1.20	1.44	0.03	3.58	3.53	3.56	3.52
312-1256D-232R2-37-a	6.72	6.61	1.60	1.13	0.00	3.57	3.53	3.55	3.52
312-1256D-232R2-37-b	6.71	6.65	1.00	1.41	0.00	3.58	3.53	3.56	3.52
Hess Deep (East Pacific Rise)									
147-894G-12R2	6.85	6.54	4.70	4.35	0.06	3.64	3.50	3.56	3.48
147-894G-12R3-142	6.97	6.55	6.30	6.59	0.17	3.68	3.47	3.55	3.43
147-894G-13R1	6.77	6.61	2.40	2.36	0.06	3.58	3.53	3.56	3.49
147-894G-11R2	6.82	6.57	3.70	3.64	0.11	3.65	3.52	3.56	3.48
HD69r6_a	6.76	6.62	2.00	1.72	0.03	3.58	3.53	3.56	3.52
HD69r10_a	6.76	6.59	2.50	2.40	0.06	3.59	3.53	3.56	3.48
HD69r16_a	6.78	6.57	3.10	2.28	0.00	3.59	3.52	3.55	3.51
HD70r2_a	6.83	6.57	3.90	2.58	0.06	3.61	3.53	3.56	3.48
HD70r14_a	6.86	6.57	4.30	3.16	0.06	3.61	3.52	3.57	3.48
HD70r15_a	6.89	6.58	4.60	4.41	0.14	3.65	3.50	3.57	3.47
HD70r17_a	6.89	6.57	4.60	2.96	0.11	3.61	3.50	3.56	3.50
HD70r18_a	6.81	6.52	4.40	5.06	0.14	3.66	3.51	3.58	3.45
HD73r2_a	6.92	6.57	5.20	4.15	0.03	3.64	3.50	3.55	3.49
HD73r4_a	6.91	6.51	6.00	5.54	0.11	3.65	3.52	3.55	3.45
HD73r5_a	6.87	6.55	4.80	2.57	0.06	3.59	3.52	3.57	3.49
HD73r9_a	6.93	6.55	5.70	4.57	0.03	3.64	3.49	3.54	3.48
HD73r13_a	6.87	6.53	5.20	3.84	0.06	3.62	3.52	3.56	3.47
HD73r15_a	6.83	6.56	4.10	3.50	0.08	3.61	3.53	3.58	3.48
HD73r16_a	6.92	6.56	5.30	4.07	0.03	3.64	3.51	3.54	3.49
HD73r18_a	6.91	6.53	5.60	3.99	0.11	3.63	3.50	3.56	3.49
HD73r20_a	6.89	6.54	5.20	4.87	0.12	3.64	3.48	3.57	3.46
HD75r5_a	6.88	6.53	5.20	3.29	0.03	3.62	3.50	3.57	3.49

**A database of
plagioclase CPO and
microstructures**

T. Satsukawa et al.

Title Page

Abstract

Introduction

Conclusions

References

Tables

Figures



Back

Close

Full Screen / Esc

Printer-friendly Version

Interactive Discussion



Table 5. (continued).

Sample#	Vp Max (km s ⁻¹)	Vp Min (km s ⁻¹)	Avp (%)	AVs Max (%)	AVs Min (%)	Vs1 max (km s ⁻¹)	Vs1 min (km s ⁻¹)	Vs2 max (km s ⁻¹)	Vs2 min (km s ⁻¹)
HD75r8_a	6.80	6.56	3.60	1.95	0.08	3.59	3.54	3.55	3.50
HD75r11_a	6.97	6.52	6.60	5.00	0.03	3.65	3.49	3.56	3.47
HD76r1_a	6.99	6.46	7.90	7.19	0.06	3.70	3.49	3.55	3.43
HD76r3_a	7.09	6.45	9.40	9.62	0.03	3.79	3.47	3.52	3.40
HD76r8_a	7.03	6.54	7.20	6.67	0.11	3.70	3.49	3.54	3.44
HD76r10_a	6.81	6.59	3.20	3.53	0.03	3.61	3.53	3.56	3.48
HD76r11_a	6.81	6.60	3.20	2.40	0.11	3.59	3.53	3.57	3.50
HD76r14_a	6.86	6.52	5.10	3.88	0.06	3.62	3.49	3.57	3.48
HD78r1_a	6.84	6.60	3.60	3.13	0.17	3.61	3.53	3.55	3.49
HD78r2_a	6.77	6.60	2.50	3.19	0.03	3.62	3.51	3.57	3.45
HD78r5a	6.83	6.58	3.80	2.99	0.06	3.59	3.52	3.57	3.49
HD78r5b	6.75	6.57	2.70	3.04	0.06	3.62	3.52	3.55	3.48
HD78r5x4	6.76	6.59	2.60	3.63	0.11	3.62	3.53	3.57	3.46
HD78r6_a	6.87	6.52	5.20	5.70	0.08	3.66	3.52	3.58	3.42
HD78r7_a	6.74	6.62	1.80	2.08	0.00	3.60	3.53	3.55	3.52
Southwest Indian Ridge, ODP Hole 735B (ODP Leg 176)									
176-735B-93R2-105	6.88	6.57	4.60	4.96	0.20	3.64	3.53	3.58	3.46
176-735B-93R4-45	6.87	6.53	5.10	4.47	0.08	3.64	3.51	3.56	3.46
176-735B-95R2-34	6.78	6.57	3.10	3.68	0.03	3.62	3.52	3.59	3.46
176-735B-114R5-108	6.82	6.51	4.60	4.38	0.09	3.64	3.50	3.55	3.46
176-735B-116R4-127	6.81	6.55	3.90	5.37	0.03	3.69	3.49	3.56	3.45
176-735B-116R5-2	6.81	6.53	4.20	4.58	0.14	3.65	3.50	3.57	3.46
176-735B-117R3-15	6.82	6.50	4.80	5.96	0.03	3.68	3.50	3.55	3.45
176-735B-120R1-16	6.78	6.57	3.20	2.66	0.06	3.58	3.52	3.56	3.49
176-735B-121R2-73	6.78	6.60	2.70	3.18	0.00	3.61	3.52	3.57	3.49
176-735B-130R3-115	6.83	6.49	5.10	4.92	0.14	3.65	3.50	3.56	3.45
176-735B-132R5-94	6.77	6.59	2.70	4.31	0.06	3.63	3.51	3.58	3.45
176-735B-133R1-35	6.80	6.56	3.60	4.30	0.08	3.63	3.51	3.59	3.48
176-735B-133R3-0	6.81	6.47	5.10	3.76	0.09	3.63	3.51	3.54	3.47
176-735B-137R6-103	6.80	6.58	3.30	2.76	0.06	3.60	3.53	3.56	3.49
176-735B-142R5-6	6.85	6.43	6.30	4.61	0.09	3.67	3.52	3.54	3.45
176-735B-147R6-39	6.80	6.57	3.50	4.69	0.06	3.67	3.51	3.56	3.48
176-735B-149R2-104	6.83	6.45	5.70	4.79	0.26	3.65	3.51	3.57	3.45
176-735B-149R3-63	6.83	6.41	6.40	7.25	0.40	3.71	3.50	3.60	3.40
176-735B-149R3-75	6.74	6.61	2.00	2.84	0.03	3.61	3.52	3.54	3.51
176-735B-150R5-96	6.79	6.60	2.70	2.67	0.06	3.61	3.52	3.56	3.49

**A database of
plagioclase CPO and
microstructures**

T. Satsukawa et al.

Title Page

Abstract Introduction

Conclusions References

Tables Figures

◀ ▶

◀ ▶

Back Close

Full Screen / Esc

Printer-friendly Version

Interactive Discussion



Table 5. (continued).

Sample#	Vp Max (km s ⁻¹)	Vp Min (km s ⁻¹)	Avp (%)	AVs Max (%)	AVs Min (%)	Vs1 max (km s ⁻¹)	Vs1 min (km s ⁻¹)	Vs2 max (km s ⁻¹)	Vs2 min (km s ⁻¹)
176-735B-150R5-98	6.84	6.55	4.30	4.03	0.03	3.61	3.51	3.59	3.45
176-735B-150R5-100	6.75	6.57	2.70	2.54	0.14	3.59	3.52	3.57	3.49
176-735B-150R5-102	6.76	6.57	2.90	4.56	0.11	3.64	3.51	3.57	3.47
176-735B-153R4-92	6.83	6.50	5.00	4.73	0.03	3.64	3.50	3.53	3.47
176-735B-154R3-118	6.90	6.47	6.40	5.51	0.06	3.67	3.51	3.55	3.45
176-735B-154R5-42	6.85	6.50	5.10	4.04	0.06	3.62	3.52	3.54	3.47
176-735B-156R5-107	6.90	6.49	6.10	4.21	0.20	3.62	3.52	3.56	3.45
176-735B-165R3-111	6.91	6.56	5.20	3.74	0.03	3.63	3.51	3.56	3.46
176-735B-165R3-115	6.83	6.54	4.40	3.72	0.11	3.61	3.53	3.57	3.46
176-735B-167R6-103	6.80	6.58	3.30	3.17	0.06	3.62	3.53	3.55	3.50
176-735B-170R1-99	6.81	6.55	4.00	4.77	0.06	3.64	3.52	3.61	3.46
176-735B-179R5-97	6.83	6.51	4.90	7.82	0.14	3.71	3.50	3.60	3.40
176-735B-189R3-110	6.90	6.55	5.20	6.68	0.09	3.71	3.49	3.58	3.46
176-735B-189R7-94	6.83	6.47	5.40	4.31	0.20	3.63	3.51	2.54	3.47
176-735B-189R7-98	6.89	6.50	5.80	5.10	0.06	3.64	3.51	3.58	3.46
176-735B-190R4-87	6.84	6.55	4.30	4.73	0.11	3.64	3.52	3.58	3.46
176-735B-191R1-36	6.78	6.57	3.10	3.41	0.03	3.61	3.50	3.57	3.49
176-735B-191R1-39	6.88	6.41	7.10	5.93	0.29	3.68	3.50	3.54	3.44
176-735B-206R6-138	6.85	6.57	4.10	4.42	0.14	3.63	3.52	3.55	3.47
176-735B-209R7-100	6.76	6.56	3.00	3.52	0.03	3.63	3.52	3.56	3.48
Mid Atlantic ridge, ODP Leg 209									
209-1270B-3M1-43	6.82	6.53	4.40	7.78	0.06	3.71	3.49	3.60	3.38
209-1275B-16R2-52	6.81	6.57	3.50	3.79	0.11	3.61	3.52	3.59	3.46
209-1275D-43R1-106	6.86	6.53	4.90	6.88	0.28	3.69	3.50	3.62	3.42
Reunion, Cirque de Salazie									
SaG2	6.93	6.54	5.80	4.08	0.25	3.63	3.51	3.56	3.47
SaG3	6.80	6.61	3.00	3.33	0.03	3.61	3.52	3.58	3.48
SaG4	6.91	6.53	5.80	3.78	0.17	3.62	3.52	3.58	3.46
SaG6	6.80	6.59	3.20	2.20	0.03	3.59	3.55	3.56	3.50
SaG6b	6.78	6.59	2.90	2.04	0.03	3.58	3.53	3.56	3.50
SaG7	6.89	6.54	5.20	3.03	0.14	3.62	3.54	3.57	3.47
SaG8	6.92	6.53	5.80	3.84	0.06	3.64	3.53	3.54	3.49
SaG9	6.92	6.53	5.80	4.17	0.03	3.65	3.51	3.54	3.49
SaG10	6.83	6.55	4.10	2.52	0.08	3.59	3.54	3.56	3.48
SaG11	6.78	6.61	2.40	2.68	0.08	3.59	3.53	3.56	3.50

**A database of
plagioclase CPO and
microstructures**

T. Satsukawa et al.

Title Page

Abstract Introduction

Conclusions References

Tables Figures

◀ ▶

◀ ▶

Back Close

Full Screen / Esc

Printer-friendly Version

Interactive Discussion



Table 5. (continued).

Sample#	Vp Max (km s ⁻¹)	Vp Min (km s ⁻¹)	Avp (%)	AVs Max (%)	AVs Min (%)	Vs1 max (km s ⁻¹)	Vs1 min (km s ⁻¹)	Vs2 max (km s ⁻¹)	Vs2 min (km s ⁻¹)
Brazil, Itabuna and Ribeira belts									
CM08	6.57	6.89	4.70	5.22	0.06	3.66	3.50	3.58	3.46
CM09	6.79	6.59	3.00	3.16	0.14	3.61	3.53	3.57	3.48
CM19	6.85	6.48	5.40	5.04	0.00	3.64	3.52	3.56	3.46
CM20	6.79	6.61	2.80	3.36	0.03	3.63	3.52	3.56	3.47
CM22	6.79	6.58	3.10	4.08	0.08	3.64	3.52	3.56	3.47
CM29	6.79	6.62	2.50	5.16	0.00	3.66	3.51	3.55	3.46
RMB20	6.87	6.59	4.20	5.74	0.20	3.64	3.51	3.59	3.43
RB538	6.95	6.54	6.20	8.93	0.06	3.79	3.44	3.55	3.38
RB540	6.77	6.61	2.40	4.02	0.06	3.64	3.52	3.57	3.45
RB546	6.85	6.58	4.20	6.95	0.03	3.72	3.46	3.58	3.39
RB548	6.86	6.58	4.20	6.95	0.03	3.72	3.46	3.58	3.39
RB559	6.89	6.57	4.80	6.71	0.11	3.72	3.50	3.58	3.40
RB566	6.75	6.57	2.70	5.37	0.14	3.66	3.51	3.58	3.46
RB5E	6.87	6.57	4.50	7.03	0.31	3.69	3.48	3.56	3.42
RB607A	6.84	6.61	3.40	4.40	0.14	3.65	3.50	3.58	3.48
RB607B	6.78	6.60	2.60	4.38	0.06	3.66	3.50	3.57	3.47
RB609A	6.96	6.58	5.70	7.82	0.08	3.73	3.48	3.55	3.40
RB614	6.77	6.61	2.30	4.37	0.03	3.62	3.50	3.57	3.46
RB689	6.89	6.53	5.40	9.09	0.09	3.77	3.47	3.55	3.44
St Thibéry lava flows									
005									
016	6.84	6.53	4.60	4.12	0.14	3.64	3.50	3.56	3.46
029	6.89	6.44	6.80	8.36	0.17	3.76	3.48	3.58	3.40
074	6.86	6.48	5.60	5.05	0.11	3.68	3.50	3.57	3.43
Oklahoma									
89ANOK	7.30	6.54	11.00	13.85	0.06	3.94	3.39	3.53	3.29

A database of plagioclase CPO and microstructures

T. Satsukawa et al.

Title Page

Abstract

Introduction

Conclusions

References

Tables

Figures

◀

▶

◀

▶

Back

Close

Full Screen / Esc

Printer-friendly Version

Interactive Discussion



A database of plagioclase CPO and microstructures

T. Satsukawa et al.

Title Page

Abstract

Introduction

Conclusions

References

Tables

Figures

◀

▶

◀

▶

Back

Close

Full Screen / Esc

Printer-friendly Version

Interactive Discussion



Table 6. Seismic properties (velocity and anisotropy) calculated as plagioclase 100% using gridded data for gabbros studied here. Vp: P-wave; AVp: P-wave anisotropy; AVs: S-wave anisotropy, respectively.

Sample#	Vp Max (km s ⁻¹)	Vp Min (km s ⁻¹)	Avp (%)	AVs Max (%)	AVs Min (%)	Vs1 max (km s ⁻¹)	Vs1 min (km s ⁻¹)	Vs2 max (km s ⁻¹)	Vs2 min (km s ⁻¹)
Oman ophiolite									
86OA20C	7.05	6.53	7.70	8.18	0.03	3.76	3.48	3.51	3.45
92OB139	6.94	6.50	6.50	7.04	0.11	3.71	3.48	3.59	3.41
06OA31b	7.00	6.41	8.70	13.85	0.33	3.81	3.44	3.66	3.31
07-2OA13	6.83	6.54	4.30	4.98	0.06	3.66	3.52	3.57	3.48
07OA20a	6.74	6.63	1.70	2.91	0.08	3.59	3.52	3.58	3.48
07OA20c1	6.75	6.63	1.90	1.49	0.03	3.58	3.53	3.55	3.52
07OA20d	6.84	6.59	3.80	2.73	0.03	3.61	3.51	3.55	3.50
07OA20e	6.85	6.60	3.70	3.18	0.09	3.61	3.51	3.56	3.49
Cocos Plate (East-Pacific Rise), ODP Hole 1256D									
312-1256D-202R1-8	6.75	6.60	2.20	3.25	0.06	3.60	3.52	3.58	3.47
312-1256D-213R1-52	6.89	6.49	6.10	6.40	0.00	3.69	3.49	3.60	3.44
312-1256D-223R3-5	6.78	6.58	3.00	4.09	0.03	3.66	3.52	3.60	3.42
312-1256D-230R1-15	6.85	6.51	5.10	5.96	0.23	3.64	3.50	3.58	3.43
312-1256D-230R1-73	6.79	6.58	3.10	3.37	0.03	3.61	3.53	3.56	3.46
312-1256D-230R1-118-a	6.86	6.54	4.70	3.58	0.06	3.63	3.52	3.56	3.47
312-1256D-230R1-118-b	6.86	6.51	5.30	5.97	0.09	3.66	3.48	3.57	3.44
312-1256D-232R1-71	6.77	6.60	2.60	2.66	0.00	3.59	3.53	3.56	3.48
312-1256D-232R1-82-a	6.70	6.66	0.70	1.19	0.03	3.57	3.53	3.56	3.52
312-1256D-232R1-82-b	6.75	6.62	2.00	2.71	0.00	3.60	3.53	3.56	3.50
312-1256D-232R2-37-a	6.71	6.64	1.00	1.10	0.03	3.57	3.53	3.55	3.52
312-1256D-232R2-37-b	6.71	6.66	0.80	1.44	0.03	3.57	3.53	3.56	3.52
Hess Deep (East Pacific Rise)									
147-894G-12R2	6.98	6.54	6.20	6.11	0.17	3.68	3.50	3.56	3.43
147-894G-12R3-142	7.01	6.53	7.20	8.50	0.03	3.72	3.46	3.57	3.40
147-894G-13R1	6.82	6.60	3.30	4.23	0.00	3.64	3.52	3.58	3.45
147-894G-11R2	6.89	6.50	5.80	8.20	0.08	3.77	3.47	3.57	3.40
HD69r6_a	6.76	6.61	2.10	3.75	0.06	3.62	3.53	3.60	3.45
HD69r10_a	7.09	6.49	8.80	12.24	0.23	3.89	3.41	3.52	3.33
HD69r16_a	6.79	6.57	3.20	2.91	0.03	3.60	3.51	3.56	3.49
HD70r2_a	7.10	6.51	8.70	15.75	0.26	3.91	3.42	3.61	3.31
HD70r14_a	6.91	6.54	5.60	4.29	0.20	3.62	3.49	3.58	3.46
HD70r15_a	6.97	6.52	6.70	5.36	0.20	3.68	3.50	3.56	3.45
HD70r17_a	7.03	6.53	7.40	11.81	0.23	3.84	3.42	3.56	3.37

Table 6. (continued).

Sample#	Vp Max (km s ⁻¹)	Vp Min (km s ⁻¹)	Avp (%)	AVs Max (%)	AVs Min (%)	Vs1 max (km s ⁻¹)	Vs1 min (km s ⁻¹)	Vs2 max (km s ⁻¹)	Vs2 min (km s ⁻¹)
HD70r18_a	6.91	6.45	6.80	9.23	0.06	3.72	3.47	3.58	3.39
HD73r2_a	6.94	6.54	5.80	4.63	0.11	3.64	3.49	3.56	3.47
HD73r4_a	6.92	6.45	7.00	10.63	0.06	3.80	3.49	3.58	3.31
HD73r5_a	6.88	6.57	4.60	3.07	0.06	3.61	3.51	3.55	3.49
HD73r9_a	7.04	6.53	7.50	12.35	0.26	3.87	3.41	3.57	3.33
HD73r13_a	6.92	6.54	5.60	4.16	0.06	3.64	3.49	3.58	3.45
HD73r15_a	6.91	6.49	6.30	4.73	0.06	3.65	3.51	3.56	3.45
HD73r16_a	6.97	6.55	6.20	4.65	0.00	3.65	3.50	3.53	3.48
HD73r18_a	6.99	6.47	7.70	6.01	0.11	3.69	3.50	3.55	3.45
HD73r20_a	6.96	6.49	7.00	6.71	0.17	3.70	3.47	3.59	3.38
HD75r5_a	6.91	6.51	6.00	4.31	0.11	3.63	3.50	3.57	3.46
HD75r8_a	6.83	6.55	4.20	2.45	0.06	3.60	3.52	3.56	3.49
HD75r11_a	6.93	6.42	7.60	12.76	0.09	3.87	3.42	3.67	3.31
HD76r1_a	7.02	6.44	8.60	7.63	0.14	3.70	3.47	3.57	3.42
HD76r3_a	7.12	6.41	10.60	10.49	0.20	3.81	3.47	3.53	3.39
HD76r8_a	7.04	6.50	8.10	7.18	0.09	3.71	3.48	3.56	3.43
HD76r10_a	6.86	6.55	4.70	5.12	0.11	3.65	3.52	3.55	3.46
HD76r11_a	7.00	6.46	8.00	12.15	0.09	3.86	3.45	3.52	3.36
HD76r14_a	6.89	6.48	6.10	4.41	0.11	3.64	3.50	3.56	3.47
HD78r1_a	6.89	6.57	4.80	4.56	0.08	3.62	3.52	3.57	3.44
HD78r2_a	6.90	6.48	6.40	9.85	0.20	3.83	3.51	3.58	3.36
HD78r5a	6.88	6.55	4.80	3.68	0.20	3.61	3.52	3.58	3.46
HD78r5b	6.89	6.46	6.40	6.81	0.17	3.71	3.49	3.57	3.42
HD78r5x4	6.84	6.54	4.60	4.77	0.17	3.63	3.50	3.57	3.46
HD78r6_a	7.04	6.42	9.30	11.58	0.14	3.81	3.42	3.59	3.36
HD78r7_a	6.75	6.64	1.70	2.20	0.03	3.59	3.52	3.56	3.51
Southwest Indian Ridge, ODP Hole 735B (ODP Leg 176)									
176-735B-93R4-45	6.90	6.51	5.90	4.95	0.14	3.67	3.51	3.56	3.46
176-735B-95R2-34	6.79	6.55	3.70	4.48	0.06	3.63	3.50	3.60	3.46
176-735B-114R5-108	6.83	6.50	4.90	5.19	0.06	3.66	3.50	3.56	3.47
176-735B-116R5-2	6.83	6.55	4.20	6.46	6.14	3.69	3.49	3.61	3.43
176-735B-120R1-16	6.78	6.55	3.50	2.96	0.08	3.60	3.52	3.56	3.49
176-735B-121R2-73	6.80	6.56	3.60	3.79	0.14	3.63	3.51	3.57	3.48
176-735B-132R5-94	6.95	6.48	7.00	12.69	0.16	3.84	3.44	3.65	3.29
176-735B-133R1-35	6.91	6.51	5.90	7.31	0.06	3.70	3.49	3.59	3.41
176-735B-133R3-0	6.80	6.48	4.90	5.07	0.06	3.64	3.51	3.54	3.45

SED

5, 1191–1257, 2013

A database of plagioclase CPO and microstructures

T. Satsukawa et al.

Title Page

Abstract

Introduction

Conclusions

References

Tables

Figures



Back

Close

Full Screen / Esc

Printer-friendly Version

Interactive Discussion



Table 6. (continued).

Sample#	Vp Max (km s ⁻¹)	Vp Min (km s ⁻¹)	Avp (%)	AVs Max (%)	AVs Min (%)	Vs1 max (km s ⁻¹)	Vs1 min (km s ⁻¹)	Vs2 max (km s ⁻¹)	Vs2 min (km s ⁻¹)
176-735B-137R6-103	6.78	6.60	2.70	2.83	0.03	3.59	3.53	3.56	3.49
176-735B-142R5-6	6.89	6.43	7.00	6.95	0.03	3.70	3.48	3.54	3.44
176-735B-149R2-104	6.85	6.42	6.50	5.90	0.14	3.68	3.49	3.58	3.43
176-735B-149R3-63	6.85	6.41	6.70	7.95	0.06	3.73	3.49	3.62	3.38
176-735B-149R3-75	6.76	6.60	2.50	3.26	0.03	3.62	3.52	3.55	3.50
176-735B-150R5-96	6.79	6.58	3.10	5.30	0.03	3.65	3.51	3.58	3.44
176-735B-150R5-98	6.88	6.53	5.30	7.95	0.14	3.72	3.49	3.62	3.37
176-735B-150R5-100	6.82	6.49	5.00	5.81	0.06	3.65	3.52	3.60	3.42
176-735B-150R5-102	6.94	6.50	5.00	8.47	0.22	3.69	3.48	3.61	3.39
176-735B-153R4-92	6.83	6.47	5.40	4.19	0.20	3.64	3.52	3.53	3.46
176-735B-154R3-118	6.95	6.46	7.20	8.07	0.11	3.72	3.49	3.57	3.39
176-735B-154R5-42	6.83	6.54	4.30	5.48	0.11	3.67	3.51	3.55	3.44
176-735B-156R5-107	6.87	6.47	6.00	5.65	0.31	3.64	3.54	3.57	3.41
176-735B-165R3-111	6.89	6.51	5.70	6.06	0.08	3.68	3.49	3.58	3.45
176-735B-165R3-115	6.85	6.51	5.10	4.62	0.06	3.66	3.51	3.57	3.44
176-735B-170R1-99	6.82	6.55	4.00	6.30	0.06	3.67	3.50	3.62	3.44
176-735B-189R3-110	6.97	6.52	6.70	9.69	0.20	3.77	3.46	3.57	3.41
176-735B-189R7-94	6.85	6.44	6.10	5.05	0.11	3.64	3.49	3.54	3.45
176-735B-189R7-98	6.91	6.48	6.30	6.63	0.03	3.69	3.48	3.60	3.42
176-735B-191R1-36	6.89	6.53	5.40	6.66	0.25	3.74	3.49	3.55	3.42
176-735B-191R1-39	6.90	6.38	7.90	5.98	0.14	3.69	3.49	3.53	3.43
176-735B-206R6-138	6.80	6.60	3.00	4.99	0.08	3.66	3.50	3.55	3.46
176-735B-209R7-100									
Reunion, Cirque de Salazie									
SaG2	6.96	6.54	6.20	4.47	0.03	3.64	3.50	3.56	3.47
SaG3	6.87	6.60	4.10	3.41	0.03	3.62	3.52	3.55	3.48
SaG4	6.92	6.51	6.10	4.28	0.11	3.64	3.51	3.58	3.46
SaG6	6.84	6.59	3.80	3.72	0.03	3.61	3.52	3.58	3.48
SaG6b	6.82	6.58	3.60	3.75	0.00	3.61	3.52	3.57	3.48
SaG7	6.96	6.58	5.60	4.82	0.00	3.66	3.50	3.53	3.47
SaG8	6.97	6.47	7.50	6.18	0.20	3.70	3.51	3.54	3.46
SaG9	6.95	6.48	7.00	6.00	0.34	3.69	3.51	3.54	3.47
SaG10	6.84	6.54	4.40	4.29	0.11	3.63	3.53	3.57	3.46
SaG11	6.76	6.62	2.10	2.40	0.06	3.60	3.52	3.57	3.49

**A database of
plagioclase CPO and
microstructures**

T. Satsukawa et al.

Title Page

Abstract

Introduction

Conclusions

References

Tables

Figures



Back

Close

Full Screen / Esc

Printer-friendly Version

Interactive Discussion



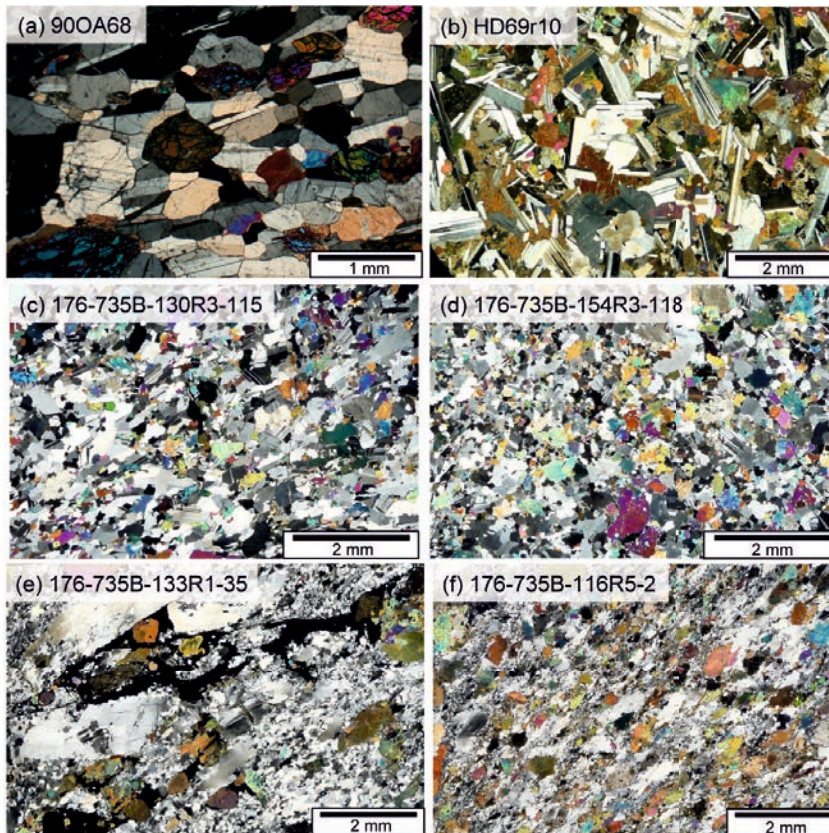


Fig. 1. Photomicrographs (cross-polarized light) of plagioclase microstructures in gabbros from the Oman ophiolite **(a)**, Hess Deep **(b)**, and ODP Hole 735B **(c to f)**. **(a, b)** Magmatic flow microstructure. **(c, d)** Magmatic flow microstructure with weak to crystal-plastic overprint. Porphyroclastic deformation microstructure **(e, f)** and mylonitic texture are produced by crystal-plastic flow. Porphyroclasts consist of plagioclase and clinopyroxene, whereas neoblast are only plagioclase.

A database of plagioclase CPO and microstructures

T. Satsukawa et al.

Title Page	
Abstract	Introduction
Conclusions	References
Tables	Figures
◀	▶
◀	▶
Back	Close
Full Screen / Esc	
Printer-friendly Version	
Interactive Discussion	



A database of plagioclase CPO and microstructures

T. Satsukawa et al.

Title Page

Abstract

Introduction

Conclusions

References

Tables

Figures

◀

▶

◀

▶

Back

Close

Full Screen / Esc

Printer-friendly Version

Interactive Discussion

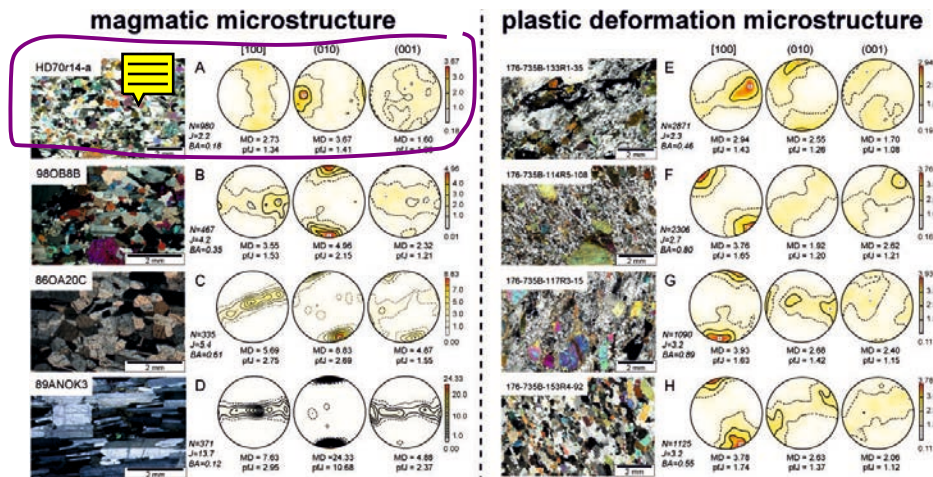


Fig. 2. CPOs of plagioclase, and corresponding photomicrographs. **(a to d)**, with BA-indices $a = 0.18$, $b = 0.35$, $c = 0.27$, $d = 0.12$ B-type CPOs of plagioclase of magmatic deformed samples. **(a)** HD70r14a from Hess Deep, **(b)** 98OB8B from Oman ophiolite, **(c)** 86OA20A from Oman ophiolite, **(d)** 89anok3 from Oklahoma. **(e to f)**, with BA-indices $e = 0.46$, $f = 0.80$, $g = 0.89$, $h = 0.55$ Plastically deformed samples from ODP Hole 735B. **(e)** Type-P CPO and mylonitic texture deformed at low temperature, **(f)** Axial-A CPO and mylonitic texture deformed at low temperature, **(g)** Type-P CPO and porphyroclastic texture deformed at low temperature, **(h)** Axial-A CPO and medium grained deformed at high temperature. Reference frame is as follows: XZ plane with lineation (X) is parallel to EW (**b to d**), top of the core is parallel to EW (**a, e to h**). N is the number of measurements, pfJ is an index of pole figure intensity, and MD is the maximum pole figure density in times uniform distribution.

A database of plagioclase CPO and microstructures

T. Satsukawa et al.

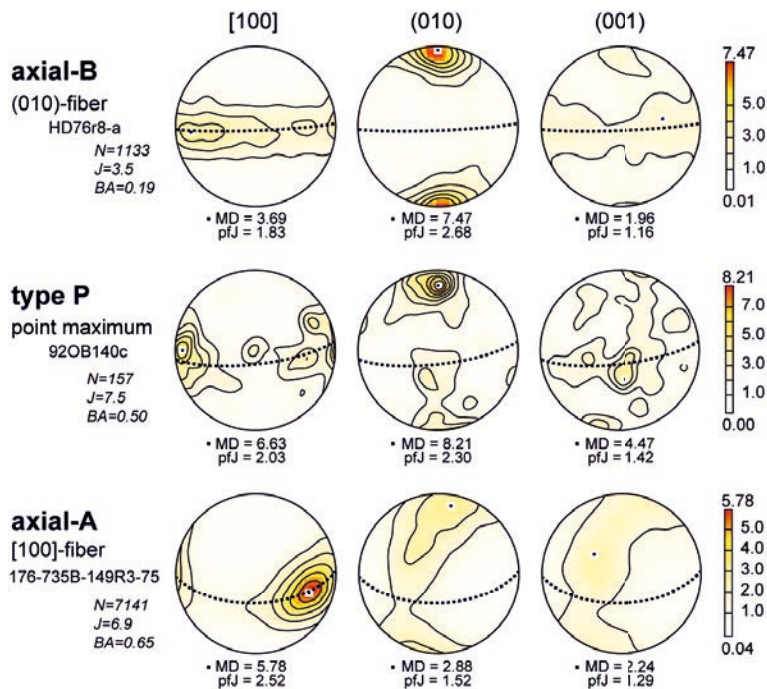


Fig. 3. Typical plagioclase Crystallographic preferred orientation (CPO) patterns. Lower hemisphere, equal-area stereographic projections, contours at one multiple of uniform distribution. The foliation plane, as defined by the preferred alignment of (010) is indicated by dashed great circles. N is the number of measurements, pfJ is an index of fabric intensity, and MD is the maximum density. All plagioclase CPOs are classified within these three main types. Axial-B is defined by a strong point concentration of (010) perpendicular to the foliation and a girdle distribution of [100] parallel to the foliation; it can be also called (010)-fiber. Type P CPO shows point maxima of the three axes, with the (010) maximum perpendicular to the foliation. Type Axial-A has a strong point maximum concentration of [100] parallel to the lineation, and parallel girdle distributions of (010) and (001), perpendicular to the foliation.

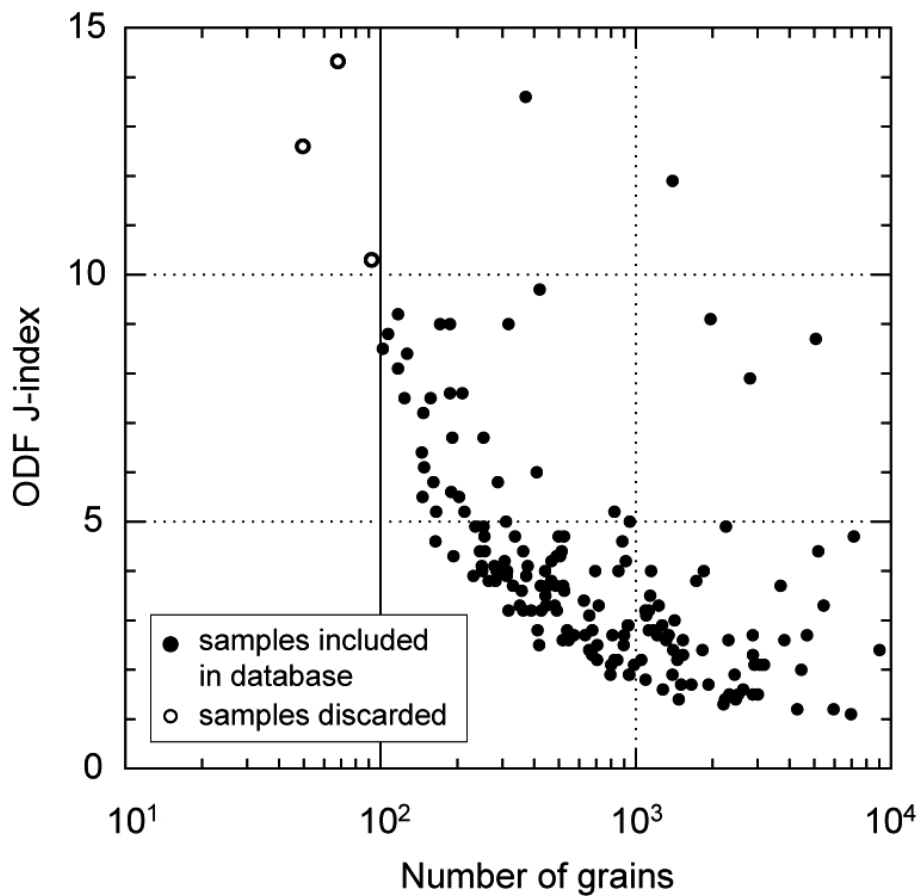


Fig. 4. Relationship between the fabric strength (J-index) and the number of measured grains. CPOs with less than 100 measurements show abnormal high J values, and are not considered.

A database of plagioclase CPO and microstructures

T. Satsukawa et al.

Title Page	
Abstract	Introduction
Conclusions	References
Tables	Figures
◀	▶
◀	▶
Back	Close
Full Screen / Esc	
Printer-friendly Version	
Interactive Discussion	



A database of plagioclase CPO and microstructures

T. Satsukawa et al.

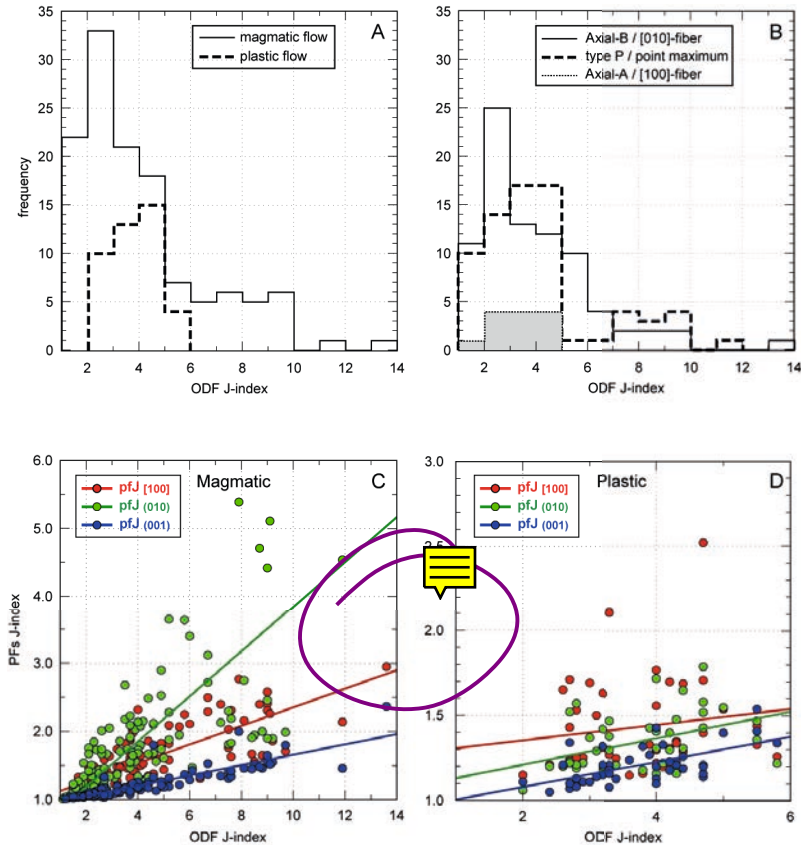


Fig. 5. (a, b) Histograms of J-index. Data are grouped as a function of deformation type (a) and CPO type (b). See text for further description. (c, d) Relation between ODF and pole figure J-indices for magmatic (c) and plastic deformation microstructures (d). The straight lines $[100]$, $\perp(010)$ and $\perp(001)$ are linear fits to scattered data for J-index of pole figures of the plagioclase CPOs of individual samples.

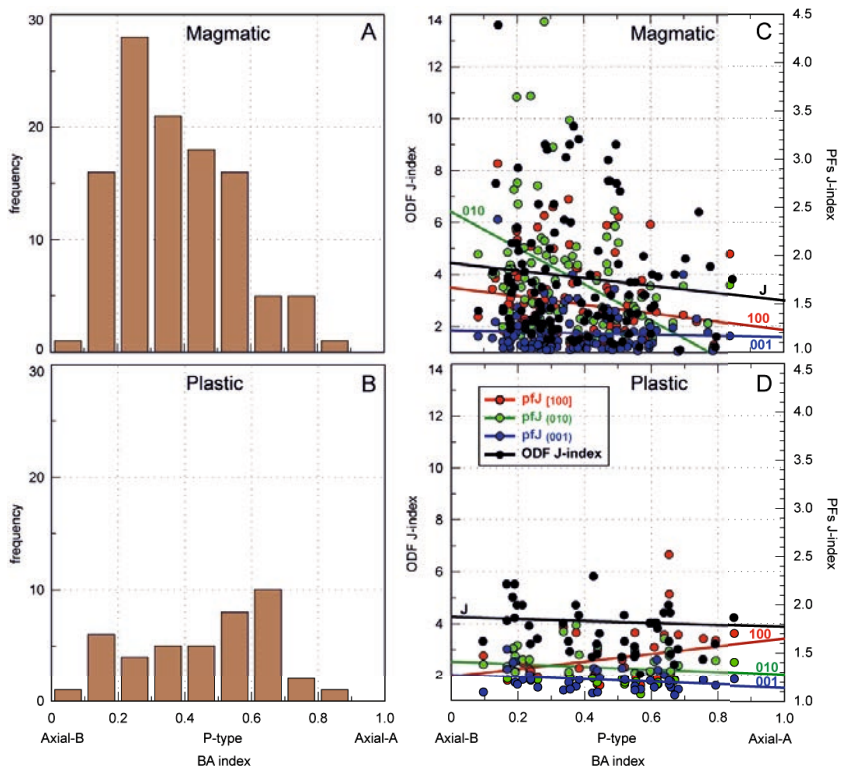


Fig. 6. (a, b) Histograms of BA-index. Data are grouped as a function of deformation type; (a) magmatic microstructure and (b) plastic deformation microstructure. (c, d) The variation of J-index of ODFs and pole figures as a function of symmetry defined by BA-index for magmatic (c) and plastic deformation microstructures (d). The straight lines J, [100], $\perp(010)$ and $\perp(001)$ are linear least-squared fits to scattered data for J-index of ODFs and pole figures of the plagioclase CPOs of individual samples.

A database of plagioclase CPO and microstructures

T. Satsukawa et al.

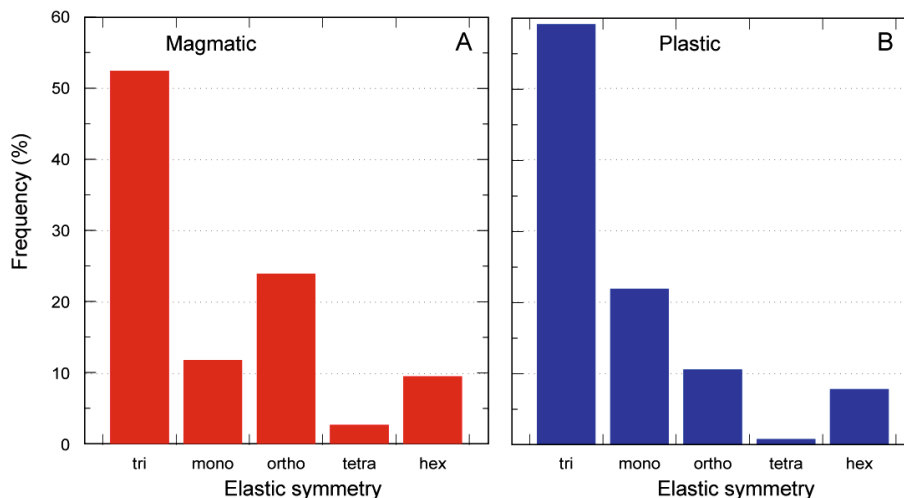


Fig. 7. Decomposition of elastic symmetry into anisotropic triclinic, monoclinic, orthorhombic, tetragonal and hexagonal components of Voigt averages calculated using plagioclase CPOs. The frequencies are mean values of all samples. N.B. the isotropic symmetry component is not shown here, it represents 95.9 % of magmatic microstructure and 96.2 % of plastic deformation microstructure.

[Title Page](#)[Abstract](#)[Introduction](#)[Conclusions](#)[References](#)[Tables](#)[Figures](#)[⏪](#)[⏩](#)[◀](#)[▶](#)[Back](#)[Close](#)[Full Screen / Esc](#)[Printer-friendly Version](#)[Interactive Discussion](#)

A database of plagioclase CPO and microstructures

T. Satsukawa et al.

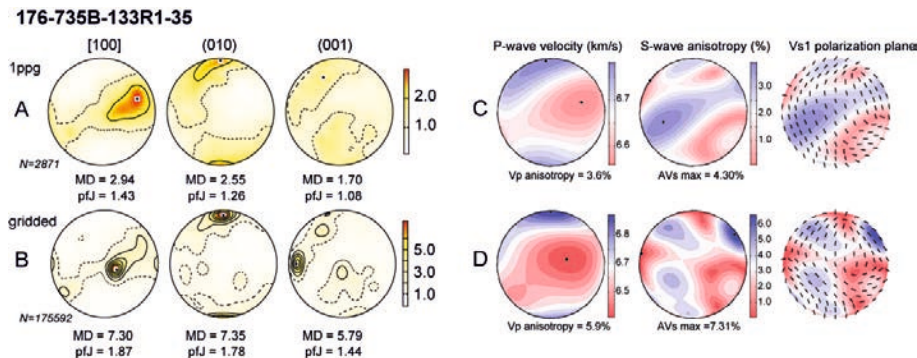


Fig. 8. Seismic properties of sample 176-735B-133R1-35 (ODP Hole 735B oxide gabbro, crystal-plastic microstructure). Plagioclase CPOs plotted from 1 ppg (**a**) and gridded (**b**) data (see Sect. 3.1 for further explanation). Seismic properties are calculated from 1 ppg (**c**) and gridded (**d**) data. The differences between 1 ppg data and gridded data reflect the effect of the heterogeneity of grain size. Contours are multiples of uniform density; V_p is the three-dimensional distribution of the P wave velocity; anisotropy is $100(V_{p_{\max}} - V_{p_{\min}})/(V_{p_{\text{mean}}})$; AVs is the three-dimensional distribution of the polarization anisotropy of S waves due to S wave splitting; and VS1 is the velocity of the fast S wave (S1); each small segment represents the orientation of the polarization plane at the point at which S1 penetrates the hemisphere.

Title Page

Abstract Introduction

Conclusions References

Tables Figures

◀ ▶

◀ ▶

Back Close

Full Screen / Esc

Printer-friendly Version

Interactive Discussion



A database of plagioclase CPO and microstructures

T. Satsukawa et al.

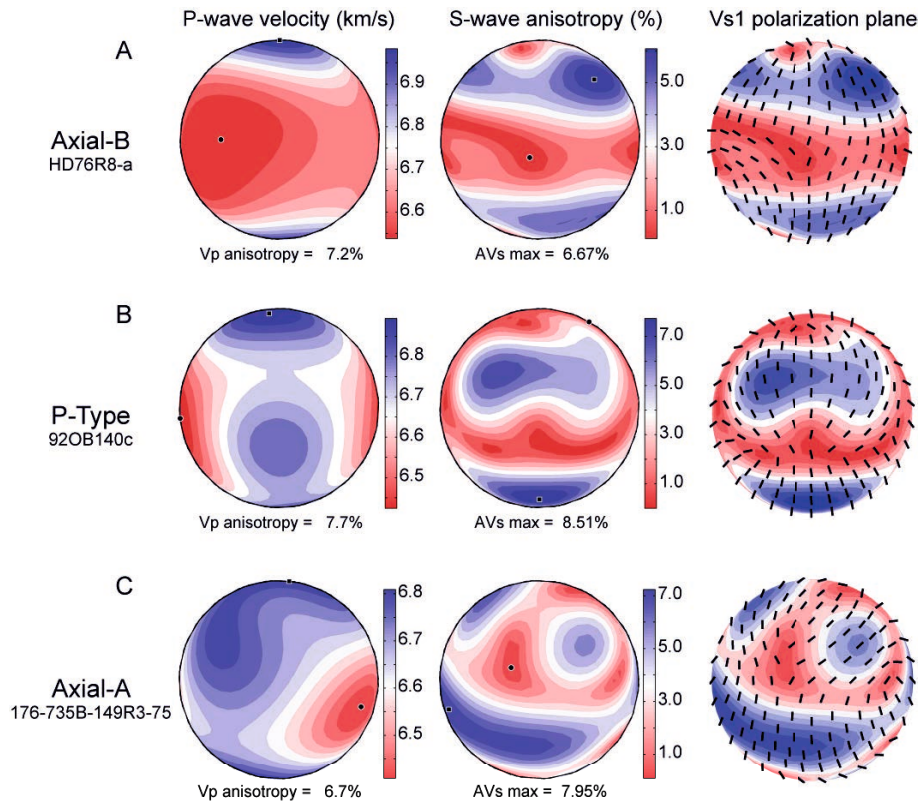


Fig. 9. Seismic properties of samples **(a)** Axial-B (HD76r8_a), **(b)** P-type (92OB140c) and **(c)** Axial-A (176-735B-149R3-75) calculated from plagioclase CPOs in the 1 ppg format (Fig. 2). **(a, b)** The foliation is approximately horizontal east-west. **(c)** The foliation is approximately vertical north-south. Lower hemisphere projections.

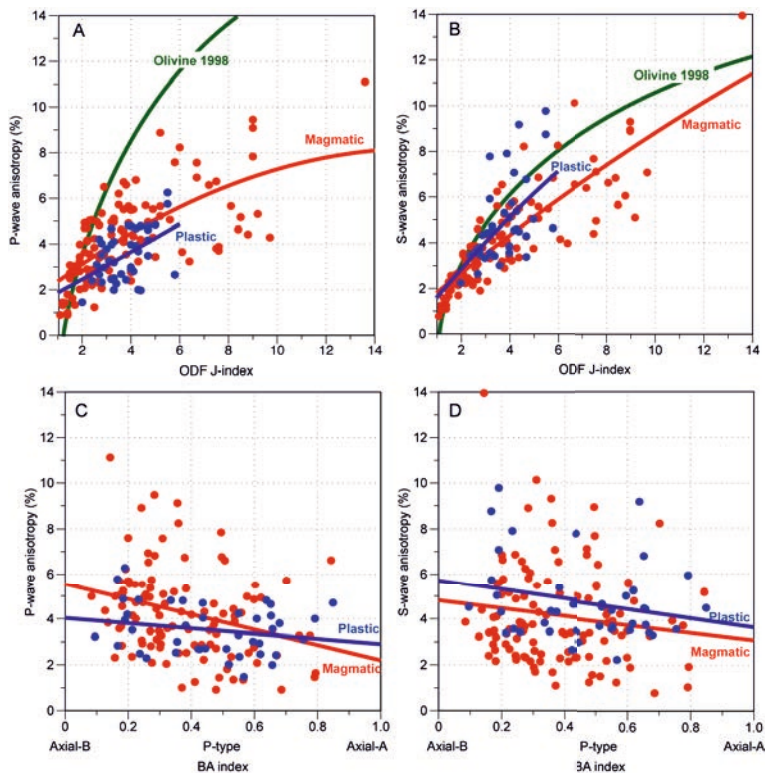


Fig. 10. Relation between P- and S wave anisotropy of 100 % plagioclase aggregates with CPO strength measured by the J-index of the ODF (**a, b**), and CPO symmetry measured by the BA-index for magmatic and plastic deformation microstructures (**c, d**). Red and blue curves lines in are power-law least-square fits (**a and b**) and linear least-square fits (**c, d**) for plagioclase. The green curve is the logarithmic least-square fit to the Ben Ismail and Mainprice (1998) data base of olivine CPOs.

A database of plagioclase CPO and microstructures

T. Satsukawa et al.

Title Page

Abstract Introduction

Conclusions References

Tables Figures

◀ ▶

◀ ▶

Back Close

Full Screen / Esc

Printer-friendly Version

Interactive Discussion

