

***Interactive comment on “Jurassic–Paleogene
intra-oceanic magmatic evolution of the Ankara
Mélange, North-Central Anatolia, Turkey” by E.
Sarifakioglu et al.***

E. Sarifakioglu et al.

esarifakioglu@mta.gov.tr

Received and published: 27 November 2013

Dear SE-CO Editor,

We would like to thank to Dr. Ibrahim Uysal for critics to improve the article.

Attached please find the revised version of manuscript and Figure 4.

Sincerely yours,

Dr. Ender Sarifakioglu MTA, Geological Survey of Turkey Ankara Turkey

Please also note the supplement to this comment:

C722

<http://www.solid-earth-discuss.net/5/C722/2013/sed-5-C722-2013-supplement.pdf>

Interactive comment on Solid Earth Discuss., 5, 1941, 2013.

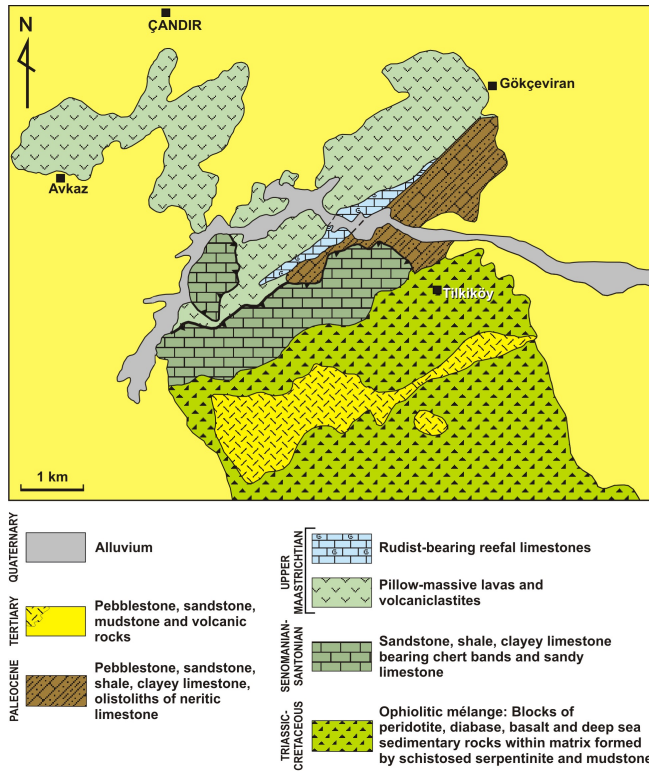


Fig. 1. figure 4