

Interactive
Comment

Interactive comment on “Jurassic–Paleogene intra-oceanic magmatic evolution of the Ankara Mélange, North-Central Anatolia, Turkey” by E. Sarifakioglu et al.

E. Sarifakioglu et al.

esarifakioglu@mta.gov.tr

Received and published: 27 November 2013

Dear SE-CO Editor,

We would like to thank to Dr. Ibrahim Uysal for critics to improve the article.

Attached please find the revised version of manuscript and Figure 4.

Sincerely yours,

Dr. Ender Sarifakioglu MTA, Geological Survey of Turkey Ankara Turkey

Please also note the supplement to this comment:

C722

Full Screen / Esc

Printer-friendly Version

Interactive Discussion

Discussion Paper



<http://www.solid-earth-discuss.net/5/C722/2013/sed-5-C722-2013-supplement.pdf>

Interactive comment on Solid Earth Discuss., 5, 1941, 2013.

SED

5, C722–C724, 2013

Interactive
Comment

Full Screen / Esc

Printer-friendly Version

Interactive Discussion

Discussion Paper

C723



Interactive
Comment

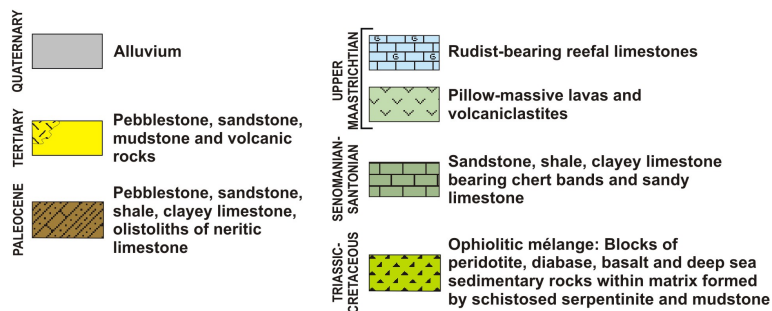
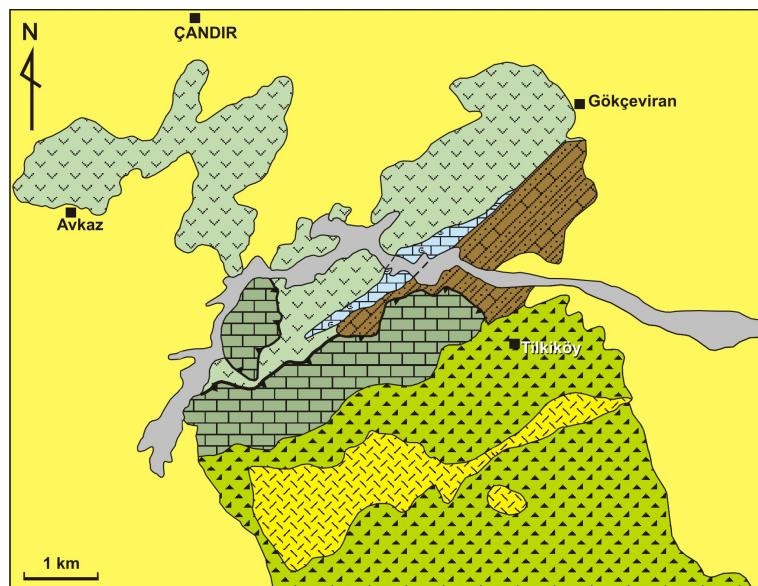


Fig. 1. figure 4

Full Screen / Esc

Printer-friendly Version

Interactive Discussion

Discussion Paper

