

Interactive comment on “Jurassic–Paleogene intra-oceanic magmatic evolution of the Ankara Mélange, North-Central Anatolia, Turkey” by E. Sarifakioglu et al.

E. Sarifakioglu et al.

esarifakioglu@mta.gov.tr

Received and published: 6 December 2013

Dear Solid Earth CO editor, We would like to thank Prof.Dr. Harald Furnes for his comments. We complete his special comments. -We have presented brief information related Ankara mélange in the Introduction, -Sakarya Continent has been shown on the map of Fig.1, - We have presented a generalized tectonostratigraphic column, - We want to state that the lamprophyric dikes and a syeno–dioritic pluton crosscut the blocks of the volcanic and volcanoclastic rocks, serpentinite, radiolarian chert, and shale in the Ankara Mélange and also, the alkaline lavas cover the rock blocks in the Ankara Mélange, - the oceanic crust basalt samples have Nb/Y (0.1–0.4) and Zr/Nb (8.1–32)

C758

values. They are not island arc basalts, -the articles (Rock, 1977; 1984) suggested by Prof. Dr. Furnes have been read.

Ender Sarifakioglu

Please also note the supplement to this comment:

<http://www.solid-earth-discuss.net/5/C758/2013/sed-5-C758-2013-supplement.pdf>

Interactive comment on Solid Earth Discuss., 5, 1941, 2013.

C759

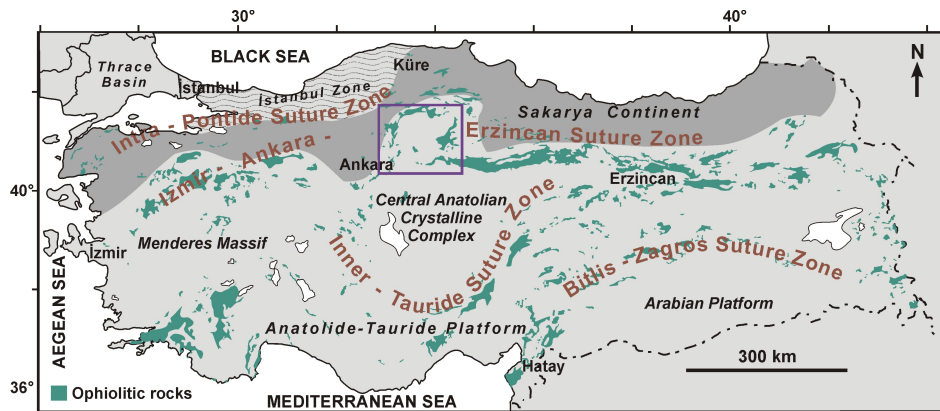


Fig. 1. Figure 1.

C760

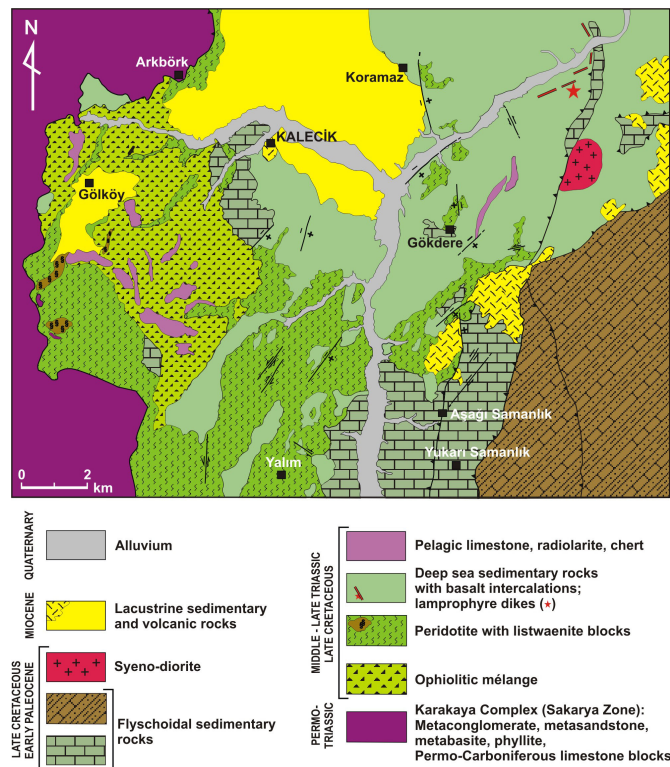


Fig. 2. Figure 3a.

C761

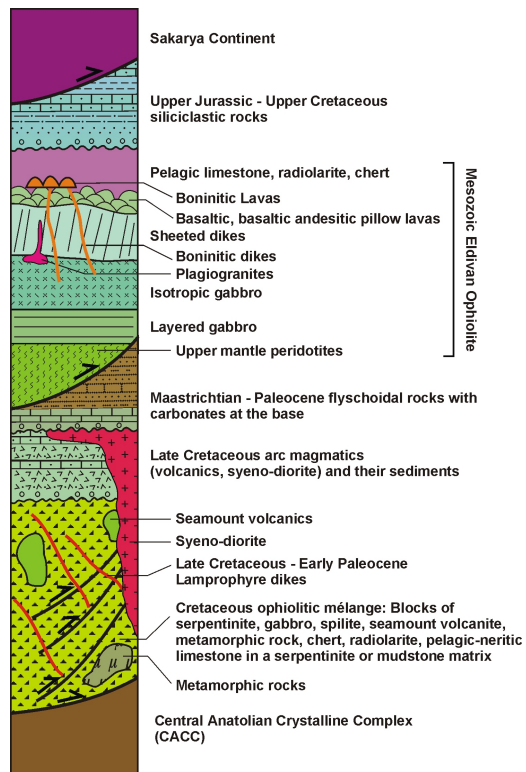


Fig. 3. Figure3b.