

Interactive
Comment

Interactive comment on “Jurassic–Paleogene intra-oceanic magmatic evolution of the Ankara Mélange, North-Central Anatolia, Turkey” by E. Sarifakioglu et al.

E. Sarifakioglu et al.

esarifakioglu@mta.gov.tr

Received and published: 6 December 2013

Dear Solid Earth CO editor, We would like to thank Prof.Dr. Harald Furnes for his comments. We complete his special comments. -We have presented brief information related Ankara mélange in the Introduction, -Sakarya Continent has been shown on the map of Fig.1, - We have presented a generalized tectonostratigraphic column, - We want to state that the lamprophyric dikes and a syeno–dioritic pluton crosscut the blocks of the volcanic and volcanoclastic rocks, serpentinite, radiolarian chert, and shale in the Ankara Mélange and also, the alkaline lavas cover the rock blocks in the Ankara Mélange, - the oceanic crust basalt samples have Nb/Y (0.1–0.4) and Zr/Nb (8.1–32)

Full Screen / Esc

Printer-friendly Version

Interactive Discussion

Discussion Paper



values. They are not island arc basalts, -the articles (Rock, 1977; 1984) suggested by Prof. Dr. Furnes have been read.

Ender Sarifakioglu

Please also note the supplement to this comment:

<http://www.solid-earth-discuss.net/5/C758/2013/sed-5-C758-2013-supplement.pdf>

Interactive comment on Solid Earth Discuss., 5, 1941, 2013.

SED

5, C758–C762, 2013

Interactive
Comment

Full Screen / Esc

Printer-friendly Version

Interactive Discussion

Discussion Paper

C759



Interactive
Comment

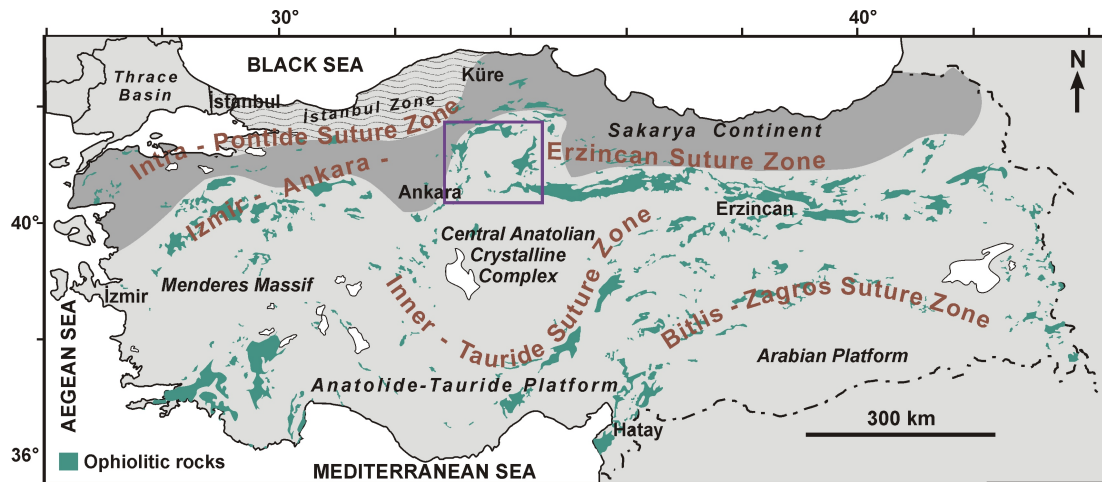


Fig. 1. Figure 1.

Full Screen / Esc

Printer-friendly Version

Interactive Discussion

Discussion Paper



Interactive
Comment

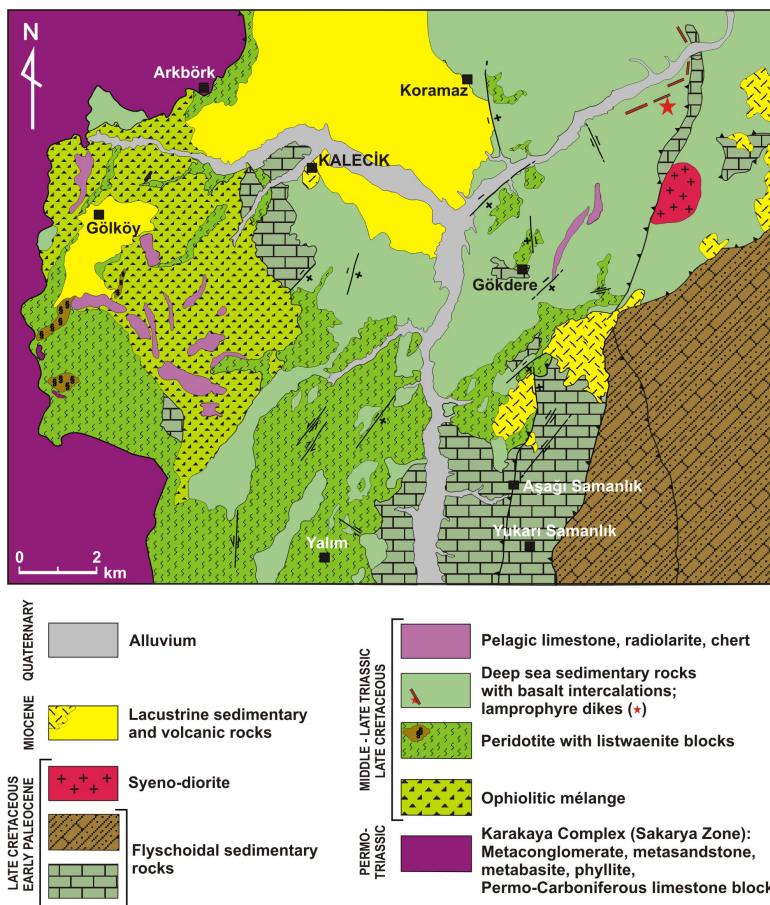


Fig. 2. Figure 3a.

Full Screen / Esc

Printer-friendly Version

Interactive Discussion

Discussion Paper



Interactive Comment

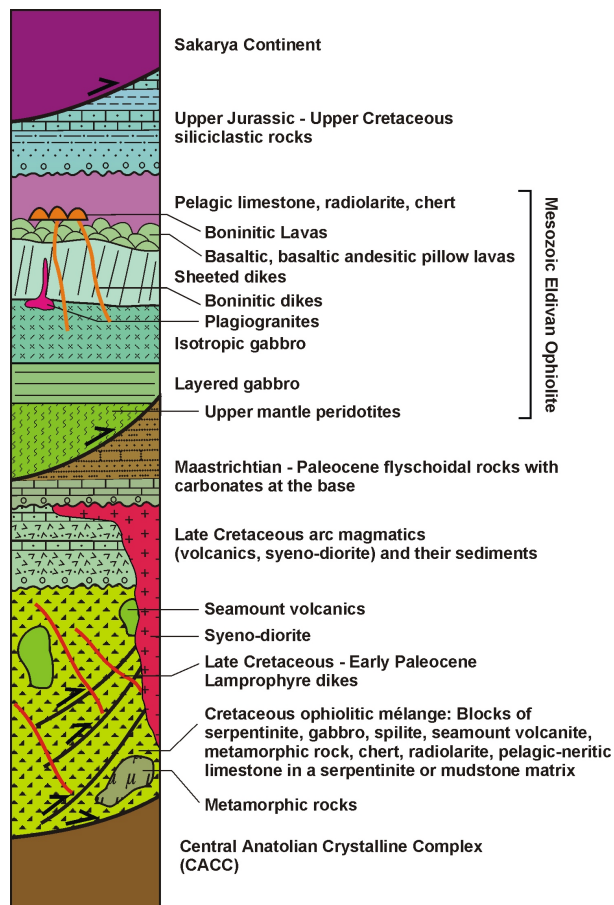


Fig. 3. Figure3b.

Full Screen / Esc

Printer-friendly Version

Interactive Discussion

Discussion Paper

