

Interactive comment on “New constraints on the geometry of the subducting African plate and the overriding Aegean plate obtained from P receiver functions and seismicity” by F. Sodoudi et al.

F. Sodoudi et al.

foroug@gfz-potsdam.de

Received and published: 24 April 2013

Please note: some errors occurred during uploading Figs. 3b & 5. Please consider the attached figures as the final versions of Fig.3b & Fig.5.

Interactive comment on Solid Earth Discuss., 5, 427, 2013.

C78

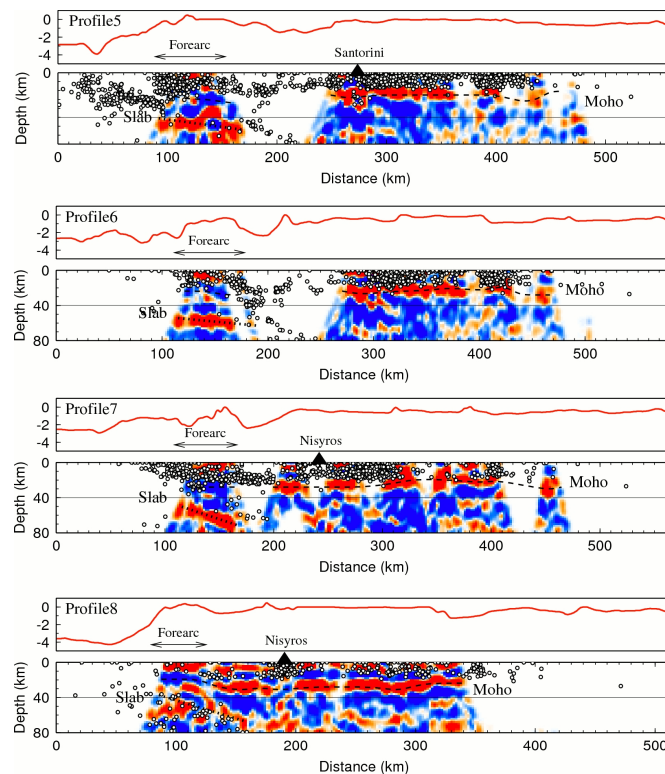


Fig. 1. Fig.3b

C79

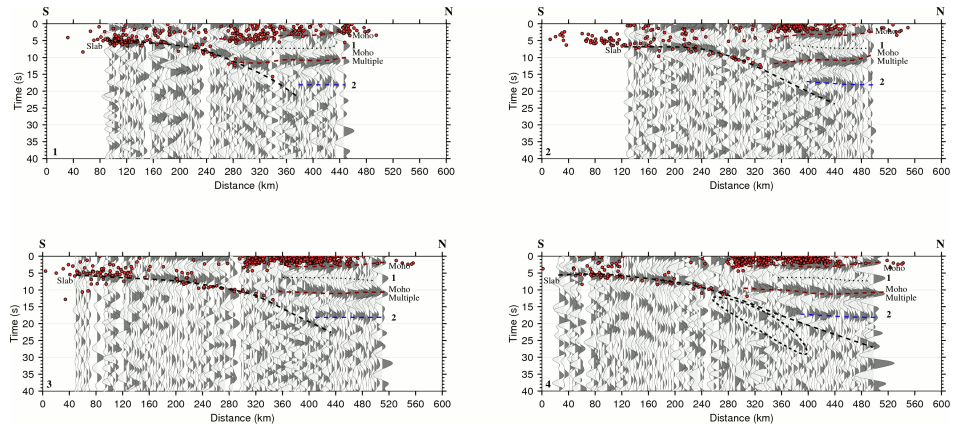


Fig. 2. Fig.5a

C80

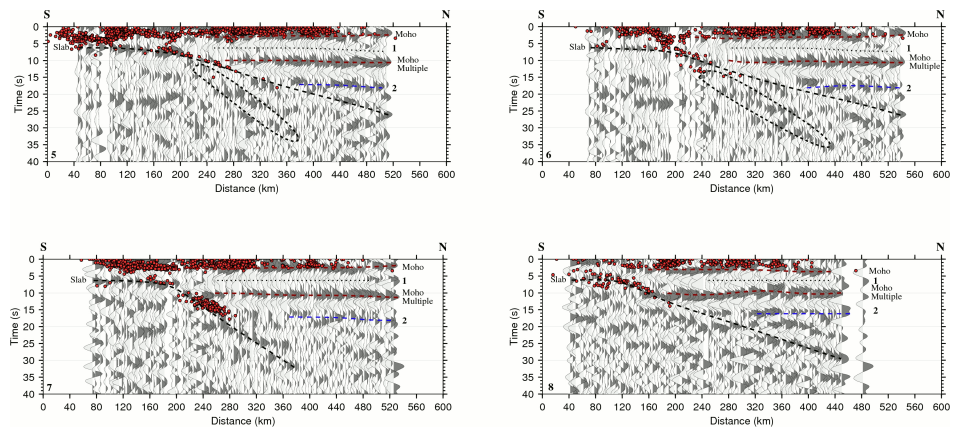


Fig. 3. Fig.5b

C81