

Simulation of seismic waves at the Earth crust (brittle-ductile transition) based on the Burgers model

Short title: Wave simulation based on the Burgers model

J. M. Carcione, F. Poletto, B. Farina, and A. Craglietto

Istituto Nazionale di Oceanografia e di Geofisica Sperimentale (OGS), Borgo Grotta Gigante
42c, 34010 Sgonico, Trieste, Italy.

Correspondence to: José M. Carcione
(jcarcione@inogs.it)

Abstract

The Earth crust presents two dissimilar rheological behaviours depending on the in-situ stress-temperature conditions. The upper, cooler, part is brittle while deeper zones are ductile. Seismic waves may reveal the presence of the transition but a proper characterization is required. We first obtain a stress-strain relation including the effects of shear seismic attenuation and ductility due to shear deformations and plastic flow. The anelastic behaviour is based on the Burgers mechanical model to describe the effects of seismic attenuation and steady-state creep flow. The shear Lamé constant of the brittle and ductile media depends on the in-situ stress and temperature through the shear viscosity, which is obtained by the Arrhenius equation and the octahedral stress criterion. The P- and S-wave velocities decrease as depth and temperature increase due to the geothermal gradient, an effect which is more pronounced for shear waves. We then obtain the P-S and SH equations of motion recast in the velocity-stress formulation, including memory variables to avoid the computation of time convolutions. The equations correspond to isotropic anelastic and inhomogeneous media and are solved by a direct grid method based on the Runge-Kutta time stepping technique and the Fourier pseudospectral method. The algorithm is tested with success against known analytical solutions for different shear viscosities. A realistic example illustrates the computation of surface and reverse-VSP synthetic seismograms in the presence of an abrupt brittle-ductile transition.

1 Introduction

The seismic characterization of the brittle-ductile transition (BDT) is essential in earthquake seismology and geothermal studies, since it plays an important role in determining the nature and nucleation depth of earthquakes (Meissner and Strehlau, 1982; Zappone, 1994; Simpson, 1999) and the availability of geothermal energy (Manzella et al., 1998). The BDT in the Earth is generally viewed as a transition between two different constitutive behaviours, viscoelastic and plastic (Dragonì, 1990). There is evidence that the K horizon in the upper crust of Central

Italy corresponds to a shear plane separating the brittle crust from the ductile crust (Brogi et al., 2003).

The viscosity of the crust is a fundamental factor in defining the properties of the BDT interface. The contrast in properties at the transition is mainly due to the dissimilar shear rigidity with much lower values in the ductile medium (Matsumoto and Hasegawa, 1996). The ductile medium mainly flows when subjected to deviatoric stress, while does not show major flow under hydrostatic stress. Then, the flow deformation is mainly associated with the shear modulus of the medium. The deviatoric stress is determined by the octahedral stress, σ_o , a scalar that is invariant under coordinate transformations and whose value determines the character of the flow. When the stress vector associated with the normal to the octahedral plane is generated, its components in the principal directions are the eigenstresses (or principal stresses). Alternatively, it has two components – one normal to the plane (which has a magnitude equal to the mean stress) and one tangential to the plane which has a magnitude equal to the octahedral stress (and the latter is proportional to the magnitude of the deviatoric stress). The rock starts to yield when σ_o exceeds the elastic octahedral-stress limit. Below this limit, there is gradual creep deformation when constant stress is applied. Then, if σ_o is lower than the elastic limit, the material follows a viscoelastic stress-strain relation. If σ_o exceeds this limit, steady-state flow and failure occurs (Carcione and Poletto, 2013).

The flow viscosity is a function of temperature and pressure, determined by the geothermal gradient and the lithostatic stress, respectively. An alternative constitutive equation is proposed by Hueckel et al. (1994), based on a thermo-plasticity theory, where the elastic domain is postulated as temperature dependent, shrinking with temperature. On the other hand, Arcay (2012) proposes a thermomechanical model based on a non-Newtonian viscous rheology and a pseudo-brittle rheology.

It is widely accepted that linear visco-elastic-plastic models are appropriate to describe the behavior of ductile media. Gangi (1981, 1983) used this type of models to fit data for synthetic and natural rocksalt. The viscoelastic creep of salt has been described with a Burgers model by Carcione et al. (2006). Carcione and Poletto (2013) used the Burgers model to describe the BDT transition, including the presence of anisotropy and seismic attenuation. The Burgers model is

shown in Figure 1 (the Maxwell and Zener model are particular cases of this model). Here, the Zener model is used to model the viscoelastic motion with no plastic flow, obtained as the limit of infinite plastic viscosity. Seismic wave losses are solely due to shear deformations.

Computational geophysics is essential to study the structure of the Earth on the basis of seismic forward modelling, inversion and interpretation (Zappone, 1994; Long and Silver, 2009; Juhlin and Lund, 2011). In particular, grid methods are required to simulate wave propagation in heterogeneous realistic models (e.g., Carcione et al., 2002; Seriani et al., 1992). In this work, we propose to simulate seismic wave propagation in heterogeneous media involving the brittle-ductile transition. The differential equations are solved in the time domain by using memory variables (Carcione, 2007). We assume isotropic media and plane strain conditions and obtain the differential equations of motion for 2D P-S and SH waves. The equations are recast in the velocity-stress formulation, requiring eight and four memory variables in the first and second cases when using one shear relaxation mechanism. The equations are solved by a direct grid method based on the Runge-Kutta and the Fourier methods, corresponding to the time and spatial discretizations (e.g., Carcione, 2007).

2 The Burgers mechanical model

The constitutive equation including both the viscoelastic and ductile behaviour, can be written as a generalization of the 1D stress-strain relation reported by Dragoni (1990) and Dragoni and Pondrelli (1991) to the 3D anelastic case, replacing the Maxwell model by the Burgers model (Carcione et al., 2006; Carcione, 2007; Carcione and Poletto, 2013).

The Burgers model is a series connection of a dashpot and a Zener model as can be seen in Figure 1. The usual expression in the time domain is the creep function

$$\chi = \left(\frac{t}{\eta} + \frac{1}{\mu_0} \left[1 - \left(1 - \frac{\tau_\sigma}{\tau_\epsilon} \right) \exp(-t/\tau_\epsilon) \right] \right) H(t) \quad (1)$$

(Carcione et al., 2006; Chauveau and Kaminski, 2008), where t is time and $H(t)$ is the Heaviside function. The quantities τ_σ and τ_ϵ are seismic relaxation times, μ_0 is the relaxed shear

modulus (see below) and η is the flow viscosity describing the ductile behaviour related to shear deformations. The frequency-domain shear modulus μ can be obtained as $\mu = [\mathcal{F}(\dot{\chi})]^{-1}$, where \mathcal{F} denotes time Fourier transform and a dot above a variable denotes time derivative. It gives

$$\mu = \frac{\mu_0(1 + i\omega\tau_\epsilon)}{1 + i\omega\tau_\sigma - \frac{i\mu_0}{\omega\eta}(1 + i\omega\tau_\epsilon)}, \quad (2)$$

where $i = \sqrt{-1}$ and ω is the angular frequency. The relaxation times can be expressed as

$$\tau_\epsilon = \frac{\tau_0}{Q_0} \left(\sqrt{Q_0^2 + 1} + 1 \right), \quad \tau_\sigma = \tau_\epsilon - \frac{2\tau_0}{Q_0}, \quad (3)$$

where τ_0 is a relaxation time such that $\omega_0 = 1/\tau_0$ is the center frequency of the relaxation peak and Q_0 is the minimum quality factor. The dependence of the quality factor as a function of frequency is given below in equation (22).

The limit $\eta \rightarrow \infty$ in equation (2) recovers the Zener kernel to describe the behaviour of the brittle material, while $\tau_\sigma \rightarrow 0$ and $\tau_\epsilon \rightarrow 0$ yield the Maxwell model used by Dragoni (1990) and Dragoni and Pondrelli (1991):

$$\mu = \mu_0 \left(1 - \frac{i\mu_0}{\omega\eta} \right)^{-1} \quad (4)$$

(e.g., Carcione, 2007). For $\eta \rightarrow 0$, $\mu \rightarrow 0$ and the medium becomes a fluid. Moreover, if $\omega \rightarrow \infty$, $\mu \rightarrow \mu_0\tau_\epsilon/\tau_\sigma$ and μ_0 is the relaxed ($\omega = 0$) shear modulus of the Zener element ($\eta = \infty$).

The viscosity η can be expressed by the Arrhenius equation (e.g., Carcione et al., 2006; Montesi, 2007). It is related to the steady-state creep rate $\dot{\epsilon}$ by

$$\eta = \frac{\sigma_o}{2\dot{\epsilon}}, \quad (5)$$

where σ_o is the octahedral stress. The creep rate can be expressed as

$$\dot{\epsilon} = A\sigma_o^n \exp(-E/RT) \quad (6)$$

(e.g., Gangi, 1983; Carcione et al., 2006; Carcione and Poletto, 2013), where A and n are constants, E is the activation energy, $R = 8.3144 \text{ J/mol}^\circ\text{K}$ is the gas constant and T is the absolute temperature. The form of the empirical relation (6) is determined by performing experiments at different strain rates, temperatures and/or stresses (e.g., Gangi, 1983; Carter and Hansen, 1983).

In order to obtain the equations of motion to describe wave propagation it is convenient to consider the Burgers relaxation function

$$\psi(t) = [A_1 \exp(-t/\tau_1) - A_2 \exp(-t/\tau_2)]H(t) \quad (7)$$

(Carcione, 2007), where

$$\tau_{1,2} = -\frac{1}{\omega_{1,2}} \quad \text{and} \quad A_{1,2} = \frac{\mu_1\mu_2 + \omega_{1,2}\eta_1\mu_2}{\eta_1(\omega_1 - \omega_2)}. \quad (8)$$

and

$$(2\eta\eta_1)\omega_{1,2} = -b \pm \sqrt{b^2 - 4\mu_1\mu_2\eta\eta_1}, \quad b = (\mu_1 + \mu_2)\eta + \mu_2\eta_1. \quad (9)$$

In terms of the relaxation times and μ_0 , it is

$$\mu_1 = \frac{\mu_0\tau_\epsilon}{\tau_\epsilon - \tau_\sigma}, \quad \mu_2 = \mu_0\frac{\tau_\epsilon}{\tau_\sigma}, \quad \eta_1 = \mu_1\tau_\epsilon. \quad (10)$$

The complex shear modulus is

$$\mu = \mathcal{F}(\dot{\psi}) = i\omega \left(\frac{A_1\tau_1}{1 + i\omega\tau_1} - \frac{A_2\tau_2}{1 + i\omega\tau_2} \right). \quad (11)$$

It can be verified that equations (2) and (11) coincide.

3 2D Propagation of P-S waves

Let us consider plane-strain conditions and propagation in the (x,z)-plane. The simplest P-S stress-strain relation, with shear loss and flow, are

$$\begin{aligned}\dot{\sigma}_{xx} &= \lambda(\partial_x v_x + \partial_z v_z) + 2\dot{\psi} * \partial_x v_x, \\ \dot{\sigma}_{zz} &= \lambda(\partial_x v_x + \partial_z v_z) + 2\dot{\psi} * \partial_z v_z, \\ \dot{\sigma}_{xz} &= \dot{\psi} * (\partial_x v_z + \partial_z v_x)\end{aligned}\tag{12}$$

- 5 (e.g., Carcione, 2007), where λ is a Lamé constant, σ are stress components, v are particle-velocity components, ∂_i indicates a spatial derivative with respect to the variable x_i , $i = 1, 2, 3$ ($x_1 = x$, $x_2 = y$ and $x_3 = z$), and “*” denotes time convolution.

The convolutions have the form $\dot{\psi} * \partial_i v_j$ and can be overcome by introducing memory variables. We obtain,

$$10 \quad \dot{\psi} * \partial_i v_j = A_1(\partial_i v_j + e_{ij}^{(1)}) - A_2(\partial_i v_j + e_{ij}^{(2)}), \quad i, j = 1, 3 \tag{13}$$

where

$$e_{ij}^{(m)} = g_m H * \partial_i v_j, \quad g_m = -\frac{1}{\tau_m} \exp(-t/\tau_m), \quad m = 1, 2, \tag{14}$$

which satisfies

$$\dot{e}_{ij}^{(m)} = -\frac{1}{\tau_m} (e_{ij}^{(m)} + \partial_i v_j). \tag{15}$$

- 15 The stress-strain relation becomes

$$\begin{aligned}\dot{\sigma}_{xx} &= (\lambda + 2A_1 - 2A_2)\partial_x v_x + \lambda\partial_z v_z + 2(A_1 e_{xx}^{(1)} - A_2 e_{xx}^{(2)}), \\ \dot{\sigma}_{zz} &= (\lambda + 2A_1 - 2A_2)\partial_z v_z + \lambda\partial_x v_x + 2(A_1 e_{zz}^{(1)} - A_2 e_{zz}^{(2)}), \\ \dot{\sigma}_{xz} &= (A_1 - A_2)(\partial_x v_z + \partial_z v_x) + A_1 e_{xz}^{(1)} - A_2 e_{xz}^{(2)} + A_1 e_{zx}^{(1)} - A_2 e_{zx}^{(2)}.\end{aligned}\tag{16}$$

On the other hand, the dynamical equations of motion are

$$\begin{aligned}\dot{v}_x &= \frac{1}{\rho}(\partial_x \sigma_{xx} + \partial_z \sigma_{xz}) + s_x, \\ \dot{v}_z &= \frac{1}{\rho}(\partial_x \sigma_{xz} + \partial_z \sigma_{zz}) + s_z\end{aligned}\tag{17}$$

(Carcione, 2007), where ρ is the mass density and s_i are source components.

The equations of motion are given by equations (15), (16) and (17) in the unknown vector

5 $\mathbf{v} = (v_x, v_z, \sigma_{xx}, \sigma_{zz}, \sigma_{xz}, e_{ij}^{(m)})^\top$. In matrix notation

$$\dot{\mathbf{v}} = \mathbf{M} \cdot \mathbf{v} + \mathbf{s},\tag{18}$$

where \mathbf{M} is a 13×13 matrix containing the material properties and spatial derivatives.

In view of the correspondence principle (e.g., Carcione, 2007), the complex and frequency-dependent P- and S-wave velocities are

$$10 \quad v_P(\omega) = \sqrt{\frac{\lambda + 2\mu(\omega)}{\rho}}, \quad \text{and} \quad v_S(\omega) = \sqrt{\frac{\mu(\omega)}{\rho}},\tag{19}$$

respectively.

For homogeneous waves in isotropic media, the phase velocity and attenuation factors are given by

$$c_{P(S)} = \left[\text{Re} \left(\frac{1}{v_{P(S)}} \right) \right]^{-1}\tag{20}$$

15 and

$$\alpha_{P(S)} = -\omega \text{Im} \left(\frac{1}{v_{P(S)}} \right),\tag{21}$$

and the P- and S-wave quality factors are given by

$$Q_{P(S)} = \frac{\text{Re}(v_{P(S)}^2)}{\text{Im}(v_{P(S)}^2)} \quad (22)$$

(e.g., Carcione, 2007).

4 Propagation of SH waves

5 The stress-strain relations describing shear motion in the (1,3)-plane are

$$\begin{aligned} \dot{\sigma}_{xy} &= \dot{\psi} * \partial_x v_y, \\ \dot{\sigma}_{zy} &= \dot{\psi} * \partial_z v_y \end{aligned} \quad (23)$$

(Carcione, 2007).

On the other hand, the dynamical equation of motion is

$$\dot{v}_y = \frac{1}{\rho} (\partial_x \sigma_{xy} + \partial_z \sigma_{zy}) + s, \quad (24)$$

10 where s is the source (Carcione, 2007).

Applying the same procedure as in the P-S case we obtain

$$\begin{aligned} \dot{\sigma}_{xy} &= (A_1 - A_2) \partial_x v_y + A_1 e_{xy}^{(1)} - A_2 e_{xy}^{(2)}, \\ \dot{\sigma}_{zy} &= (A_1 - A_2) \partial_z v_y + A_1 e_{zy}^{(1)} - A_2 e_{zy}^{(2)}, \end{aligned} \quad (25)$$

with

$$\begin{aligned} \dot{e}_{xy}^{(m)} &= -\frac{1}{\tau_m} (\partial_x v_y + e_{xy}^{(m)}), \\ \dot{e}_{zy}^{(m)} &= -\frac{1}{\tau_m} (\partial_z v_y + e_{zy}^{(m)}), \quad m = 1, 2. \end{aligned} \quad (26)$$

The equations of motion are given by equations (24), (25) and (26) in the unknown vector $\boldsymbol{\sigma} = (v_y, \sigma_{xy}, \sigma_{zy}, e_{xy}^{(m)}, e_{zy}^{(m)})^\top$ and can be recast as equation (18) with matrix \mathbf{M} of dimension 7×7 .

5 Numerical solution

5 The formal solution to equation (18) with zero initial conditions is given by

$$\mathbf{v}(t) = \int_0^t \exp(\tau \mathbf{M}) \cdot \mathbf{s}(t - \tau) d\tau, \quad (27)$$

where $\exp(t\mathbf{M})$ is the evolution operator of the system. The numerical solution is based on a Taylor expansion of this operator up to the fourth order, and the Runge-Kutta algorithm is used (Jain, 1984; Carcione, 2007).

10 The spatial derivatives are calculated with the Fourier pseudospectral method (Kosloff and Baysal, 1982; Carcione, 2007). This method consist of a spatial discretization and calculation of spatial derivatives using the fast Fourier transform. It is a collocation technique in which a continuous function is approximated by a truncated series of trigonometric functions, wherein the spectral (expansion) coefficients are chosen such that the approximate solution coincides
15 with the exact solution at the discrete set of sampling or collocation points. The collocation points are defined by equidistant sampling points. Since the expansion functions are periodic, the Fourier method is appropriate for problems with periodic boundary conditions. The method is infinitely accurate up to the maximum wavenumber of the mesh, that corresponds to a spatial wavelength of two grid points.

20 The stability condition of the Runge-Kutta method is $c_{\max} dt/d_{\min} < 2.79$, where c_{\max} is the maximum phase velocity, dt is the time step and d_{\min} is the minimum grid spacing.

6 Examples

First, we test the numerical code against an analytical solution for P-S waves in homogeneous media (Appendix A). To compute the transient responses, we use a Ricker wavelet of the form:

$$w(t) = \left(a - \frac{1}{2}\right) \exp(-a), \quad a = \left[\frac{\pi(t - t_s)}{t_p}\right]^2, \quad (28)$$

- 5 where t_p is the period of the wave (the distance between the side peaks is $\sqrt{6}t_p/\pi$) and we take $t_s = 1.4t_p$. Its frequency spectrum is

$$W(\omega) = \left(\frac{t_p}{\sqrt{\pi}}\right) \bar{a} \exp(-\bar{a} - i\omega t_s), \quad \bar{a} = \left(\frac{\omega}{\omega_p}\right)^2, \quad \omega_p = \frac{2\pi}{t_p}. \quad (29)$$

The peak frequency is $f_p = 1/t_p$.

- The rock is described by an unrelaxed P-wave velocity of $c_P = 6$ km/s. Considering a Poisson
 10 medium, we obtain an S-wave velocity of $c_S = 3.464$ km/s. We have $\lambda + 2\mu_0 = \rho c_P^2$ and $\mu_0 = \rho c_S^2$. Assuming a density of $\rho = 2700$ kg/m³, we have $\lambda = \mu_0 = 32.4$ GPa. The seismic quality factor is $Q_0 = 40$ and $\omega_0 = 2\pi f_p$. The numerical mesh has 231×231 grid points and a grid spacing of $dx = dz = 30$ m. The source is a vertical force with $f_p = 10$ Hz and the receiver is located at $x = z = 1.2$ km from the source. The solution is computed using a time step $dt =$
 15 1 ms. Figure 2 shows the comparison between the numerical and analytical PS-wave solutions for $\eta = 10^{20}$ Pa s (a-b) and $\eta = 10^9$ Pa s (c-d), where (a) and (c) correspond to v_x and (b) and (d) to v_z . At the source peak frequency, the P- and S-wave quality factors for $\eta = 10^{20}$ Pa s are 60 and 40, while those corresponding to $\eta = 10^9$ Pa s are 2.9 and 1.8, respectively, i.e., very strong attenuation. The results for the SH wave are displayed in Figure 3. In this case, we
 20 assume $Q_0 = \infty$, i.e., attenuation is solely due to the plastic viscosity. The quality factor for $\eta = 2 \times 10^{10}$ Pa s is 39.

- Next, we present examples showing the capabilities of the full-waveform simulation algo-
 25 rithm for the seismic characterization of crustal rocks at very high temperatures, as those encountered at depths where hydrothermal fluids are present at supercritical conditions (Albertson et al., 2003). The temperature dependence is expressed by the Arrhenius steady-state power

law, e.g., Eq. 15 in Carcione and Poletto (2013). We use realistic Arrhenius constants $A = 10^{30}$ MPa $^{-n}$ s $^{-1}$, $n = 3.5$ and activation energy $E = 990$ kJ/mol for the rheology of the Icelandic crust (Violay et al., 2010, 2012). These parameters were determined by mechanical observations in laboratory stress-deformation experiments performed at different confining pressures with glass-free basaltic rock samples (GBF) (Violay et al., 2010, 2012), in agreement with the results of Hacker and Christie (1992). In the absence of glass (silica)—that strongly influences the ductile behaviour of the basaltic rock at lower temperatures—the glassy-free basalts present rapid BDT variation at high temperature. Figure 4 shows the temperature profile used in the calculation, with a steep gradient at depth, similar to that reported in Foulger (1995).

The purpose of the numerical experiment is to predict P- and S-wave propagation with dispersion and attenuation at high temperatures (Carcione and Poletto, 2013), and study the observability of the BDT by seismic reflection methods. This issue poses the problem to evaluate suitable transition zones and gradients for the crustal rock properties to get reflections in the frequency range typical of seismic exploration. In the following examples, we assume propagation in a uniform, isotropic medium, under lithostatic pressure in the absence of tectonic stress. Figures 5 and 6 show the phase velocities calculated at a frequency of 10 Hz using the approach of Carcione and Poletto (2013), with an average lithostatic confining pressure of approximately 95 MPa for a Poisson medium with unrelaxed P-wave velocity of 6 km/s, S-wave velocity of 3.464 km/s and density $\rho = 2600$ kg/m 3 . The transition in the GBF velocity functions is quite rapid at approximately 3.55 km in Figure 6, corresponding to $T = 1120$ °C. Complete melting is obtained above 1300 °C. The sharp variation of the velocity in the transition zone (Figure 7) is due to the combined effect of the rapid velocity variation in the BDT zone (Figure 5) and to the steep temperature gradient (Figure 4). Figure 8 shows the dispersion of the P-wave velocity calculated at frequencies of 3, 10 and 30 Hz.

The full-waveform synthetic data are calculated using a vertical source with a Ricker wavelet with maximum frequency of 50 Hz. The source is assumed to be located at the free surface and the grid spacing of the numerical mesh is 10 m. The signals are recorded by a horizontal line of receivers at the surface (shot gather) and by a vertical array of receivers. The latter experiment simulates a seismic-while-drilling reverse-VSP experiment (Poletto and Miranda, 2004; Poletto

et al., 2011). Figure 9 shows the synthetic common-shots, where (a) corresponds to the vertical component and (b) to the horizontal component. In both shot gathers, we can see the reflections of the transition interface for P waves (RP) (a) and S waves (RS) (b). We remark the fact that the only change in the model is the temperature profile. Figure 10 shows the VSP recorded at zero offset, from 0.2 km depth to the bottom of the model. We can observe the direct transmitted arrival (TP) in the deeper melted zone below 3.5 km, and the reflection of the P wave (RP) at approximately 3.5 km depth. Finally, Figure 11 shows the f - k plot of the VSP signal calculated every 10 m in depth. This plot confirms that the dispersion in this example is moderate due to the thinness of the GBF transient zone (cfr. Figure 7). Higher dispersion can be expected in glassy basalts (GB) (Violay et al., 2010, 2012).

7 Conclusions

The upper – cooler – part of the crust is brittle, while deeper zones present ductile behaviour. In some cases, this brittle-ductile transition is a single seismic reflector with an associated reflection coefficient. The stress-strain relation and its physical implications have been analysed in a previous work. Here, we have developed a full-waveform algorithm to simulate temperature-dependent propagation of seismic waves in geothermal and magmatic crustal rheologies in general and the brittle-ductile transition in particular. This abrupt transition is believed to be the lower limit of seismicity and may be an indication of geothermal activity, since its reflectivity may reveal the presence of partial melting and/or overpressured fluids.

The method uses the Burgers viscoelastic model and the Arrhenius equation to calculate the flow viscosity. Existing viscoelastic codes, based on the Maxwell, Kelvin-Voigt and Zener models, cannot be used, because they fail to model both the brittle and ductile behaviours. The time convolutions appearing in the stress-strain relations are circumvented by introducing memory variables and the numerical algorithm is based on the Fourier pseudospectral method to compute the spatial derivatives. The modeling technique, developed for P-SV and SH waves, is successfully tested against known analytical solutions.

The example demonstrate the observability of the brittle-ductile transition using surface-seismic and VSP methods under appropriate conditions. Similar simulations, using this forward modeling technique, can be performed, including estimations of P/S velocity relations, dispersion and attenuation related to temperature profiles, temperature-gradient variations, pressure conditions and many aspects of rock physics in hot geothermal reservoirs with hydrothermal fluids and inhomogeneous media.

Appendix A

Analytical solution in 2D homogeneous media

The P-S Green's function corresponding to the wave field generated by an impulsive vertical force of strength F_0 is given by

$$G_x(x, z, \omega, v_P, v_S) = \left(\frac{F_0}{2\pi\rho} \right) \frac{xz}{r^2} [F_1(x, z, \omega, v_P, v_S) + F_3(r, \omega, v_P, v_S)], \quad (\text{A1})$$

$$G_z(x, z, \omega, v_P, v_S) = \left(\frac{F_0}{2\pi\rho} \right) \frac{1}{r^2} [z^2 F_1(x, z, \omega, v_P, v_S) - x^2 F_3(r, \omega, v_P, v_S)], \quad (\text{A2})$$

where $r = \sqrt{x^2 + z^2}$,

$$F_1(r, \omega, v_P, v_S) = \frac{\pi\omega}{2} \left[\frac{1}{v_P^2} H_0^{(2)} \left(\frac{\omega r}{v_P} \right) + \frac{1}{\omega r v_S} H_1^{(2)} \left(\frac{\omega r}{v_S} \right) - \frac{1}{\omega r v_P} H_1^{(2)} \left(\frac{\omega r}{v_P} \right) \right], \quad (\text{A3})$$

$$F_3(r, \omega, v_P, v_S) = -\frac{\pi\omega}{2} \left[\frac{1}{v_S^2} H_0^{(2)} \left(\frac{\omega r}{v_S} \right) - \frac{1}{\omega r v_S} H_1^{(2)} \left(\frac{\omega r}{v_S} \right) + \frac{1}{\omega r v_P} H_1^{(2)} \left(\frac{\omega r}{v_P} \right) \right], \quad (\text{A4})$$

and $H_0^{(2)}$ and $H_1^{(2)}$ are the zero- and first-order Hankel functions of the second kind (Eason et al., 1956; Carcione, 2007).

The 2D viscoelastic particle velocities can then be expressed as

$$v_i(x, z, \omega) = \begin{cases} W(\omega)G_i(x, z, \omega, v_P, v_S), & \omega \geq 0, \\ W^*(\omega)G_i^*(x, z, -\omega, v_P, v_S), & \omega < 0, \quad i = 1, 3 \end{cases} \quad (\text{A5})$$

(hermiticity), where the superscript “*” denotes complex conjugate and G_x and G_z are assumed to be zero at $\omega = 0$. A numerical inversion to the time domain by a discrete Fourier transform
 5 yields the desired time-domain solution.

On the other hand, the SH Green’s function is

$$G(x, z, \omega, v_S) = \pi\omega H_0^{(2)}\left(\frac{\omega r}{v_S}\right) \quad (\text{A6})$$

(Carcione, 2007, Section 6.4), and

$$v_y(x, z, \omega) = \begin{cases} W(\omega)G(x, z, \omega, v_S), & \omega \geq 0, \\ W^*(\omega)G^*(x, z, -\omega, v_S), & \omega < 0. \end{cases} \quad (\text{A7})$$

10 *Acknowledgements.* We thank Josep de la Puente for useful comments.

References

- Albertsson, A.J., Bjarnason, O., Gunnarsson, T., Balizus, C. and Ingason, K.: Part III: Fluid Handling and Evaluation, In: Iceland Deep Drilling Project, Feasibility Report OS-2003-007, 33 pp., 2003.
- Arcay, D.: Dynamics of interplate domain in subduction zones: influence of rheological parameters and subducting plate age, *Solid Earth*, 3, 467–488, 2012.
- 5 Brogi, A., Lazzarotto, A., Liotta, D. and Ranalli, G.: Extensional shear zones as imaged by reflection seismic lines: the Larderello geothermal field (central Italy), *Tectonophysics*, 363, 127–139, 2003.
- Carcione, J.M.: Wave fields in real media: Wave propagation in anisotropic, anelastic, porous and electromagnetic media. *Handbook of Geophysical Exploration*, vol. 38, Elsevier (2nd edition, revised and extended), 2007.
- 10 Carcione, J.M., Helle, H.B. and Gangi, A.F.: Theory of borehole stability when drilling through salt formations, *Geophysics*, 71, F31–F47, 2006.
- Carcione, J.M., Herman, G. and ten Kroode, F.P.E.: Seismic modeling, *Geophysics*, 67, 1304–1325, 2002.
- 15 Carcione, J.M. and Poletto, F.: Seismic rheological model and reflection coefficients of the brittle-ductile transition, *Pure and Applied Geophysics*, DOI 10.1007/s00024-013-0643-4, 2013.
- Carter, N.L. and Hansen, F.D.: Creep of rocksalt, *Tectonophysics*, 92, 275–333, 1983.
- Chauveau, B. and Kaminski, E.: Porous compaction in transient creep regime and implications for melt, petroleum, and CO₂ circulation, *J. Geophys. Res.*, 113, B09406, doi:10.1029/2007JB005088, 2008.
- 20 Dragoni, M.: Stress relaxation at the lower dislocation edge of great shallow earthquakes, *Tectonophysics*, 179, 113–119, 1990.
- Dragoni, M. and Pondrelli, S.: Depth of the brittle-ductile transition in a transcurrent boundary zone, *Pure and Applied Geophysics*, 135, 447–461, 1991.
- Eason, G., Fulton, J. and Sneddon, I.N.: The generation of waves in an infinite elastic solid by variable body forces, *Phil. Trans. Roy. Soc. London, Ser. A*, 248, 575–607, 1956.
- 25 Foulger, G.R.: The Hengill geothermal area, Iceland – variation of temperature gradients deduced from the maximum depth of seismogenesis, *J. Volc. Geotherm. Res.*, 65, 119–133, 1995.
- Gangi, A.F.: A constitutive equation for one-dimensional transient and steady-state flow of solids. *Mechanical Behavior of Crustal Rocks*, *Geophysical Monograph AGU*, 24, 275–285, 1981.
- 30 Gangi, A.F.: Transient and steady-state deformation of synthetic rocksalt, *Tectonophysics*, 91, 137–156, 1983.

- Hacker, B.R. and Christie, J.M.: Experimental deformation of glassy basalt, *Tectonophysics*, 200, 79–96, 1992.
- Hueckel, T., Peano, A. and Pellegrini, R.: A constitutive law for thermo-plastic behaviour of rocks: an analogy with clays, *Surv. Geophys.*, 15, 643–671, 1994.
- 5 Jain, M. K.: Numerical solutions of differential equations, Wiley Eastern Ltd., 1984.
- Juhlin, C. and Lund, B.: Reflection seismic studies over the end-glacial Burträsk fault, Skellefteå, Sweden, *Solid Earth*, 2, 9–16, 2011.
- Kosloff, D., and Baysal, E.: Forward modeling by the Fourier method: *Geophysics*, 47, 1402–1412, 1982.
- 10 Long, M.D. and Silver, P.G.: Shear Wave Splitting and Mantle Anisotropy: Measurements, Interpretations, and New Directions, *Surv. Geophys.*, 30, 407–461, 2009.
- Manzella, A., Ruggieri, G., Gianelli, G. and Puxeddu, M.: Plutonic-geothermal systems of southern Tuscany: a review of the crustal models, *Mem. Soc. Geol. It.*, 52, 283–294, 1998.
- Matsumoto, S. and Hasegawa, A.: Distinct S-wave reflector in the midcrust beneath Nikko-Shirane volcano in the northeastern Japan arc, *J. Geophys. Res.*, 101(B2), 3067–3083, 1996.
- 15 Meissner, R. and Strehlau, J.: Limits of stresses in continental crusts and their relation to the depth-frequency distribution of shallow earthquakes, *Tectonics*, 1, 73–89, 1982.
- Montesi, L.G.J.: A constitutive model for layer development in shear zones near the brittle-ductile transition, *Geophys. Res. Lett.*, 34, L08307, doi:10.1029/2007GL029250, 2007.
- Poletto, F., Corubolo, P., Schleifer, A., Farina, B., Pollard, J. and Grozdanich, B.: Seismic while drilling for geophysical exploration in geothermal wells, *GRC Transactions*, 35, 1737–1741, 2011.
- 20 Poletto, F. and Miranda, F.: Seismic while drilling. *Fundamentals of drill-bit seismic for exploration*, Pergamon, Amsterdam, 2004.
- Seriani, G., Priolo, E., Carcione, J.M. and Padovani, E.: High-order spectral element method for elastic wave modeling: High-order spectral element method for elastic wave modeling, 62nd Ann. Internat. Mtg., Soc. Expl. Geophys., Expanded Abstracts, 1285–1288, 1992.
- 25 Simpson, F.: Stress and seismicity in the lower crust: a challenge to simple ductility and implications for electrical conductivity mechanisms, *Surv. Geophys.*, 20, 201–227, 1999.
- Violay, M., Gibert, B., Mainprice, D., Evans, B., Pezard, P.A., Flovenz, O.G. and Asmundsson, R.: The brittle-ductile transition in experimentally deformed basalt under oceanic crust conditions: Evidences for presence of permeable reservoirs at supercritical temperatures and pressures in the Icelandic crust, *Proceeding World Geothermal Congress, Bali, Indonesia*, 25-29 April, 2010.
- 30

Violay, M., Gibert, B., Mainprice, D., Evans, B., Dautria, J.M., Azais, P. and Pezard, P.A.: An experimental study of the brittle-ductile transition of basalt at oceanic crust pressure and temperature conditions, *Geophys. Res.*, 117, 1–23, 2012.

Zappone, A.: Calculated and observed seismic behaviour of exposed upper mantle, *Surv. Geophys.*, 5, 629–642, 1994.

5

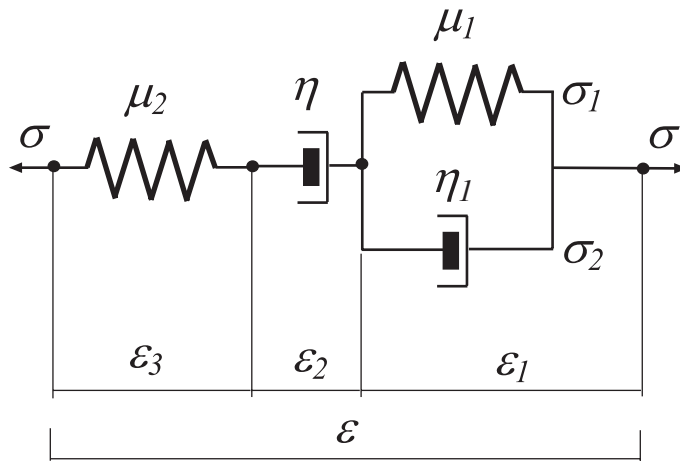


Fig. 1. Mechanical representation of the Burgers viscoelastic model for shear deformations (e.g., Carcione, 2007). σ , ϵ , μ and η represent stress, strain, shear modulus and viscosity, respectively, where η_1 describes seismic relaxation while η is related to plastic flow and processes such as dislocation creep.

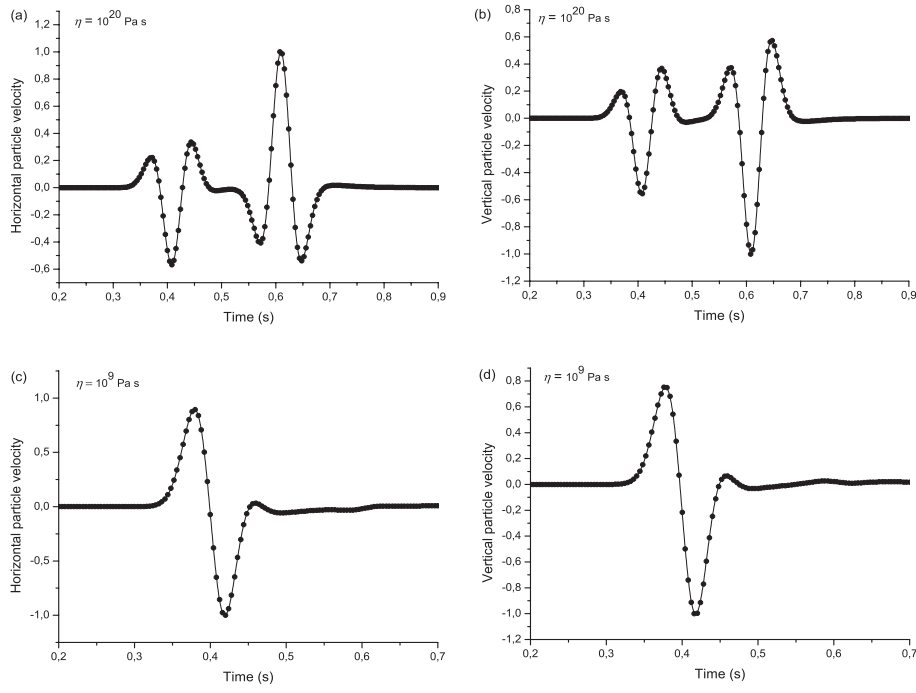


Fig. 2. Comparison between the analytical (solid line) and numerical (symbols) PS-wave solutions. The fields are normalised. The amplitude in (c) and (d) are much lower than in (a) and (b) due to attenuation arising from the plastic viscosity. The S-wave has disappeared for $\eta = 10^9 \text{ Pa s}$.

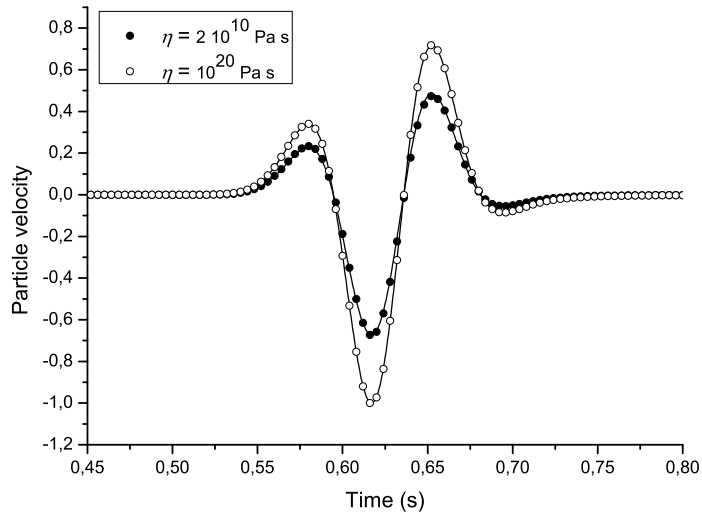


Fig. 3. Comparison between the analytical (solid line) and numerical (symbols) SH-wave solutions. The fields are normalised with respect to the amplitude of the higher viscosity.

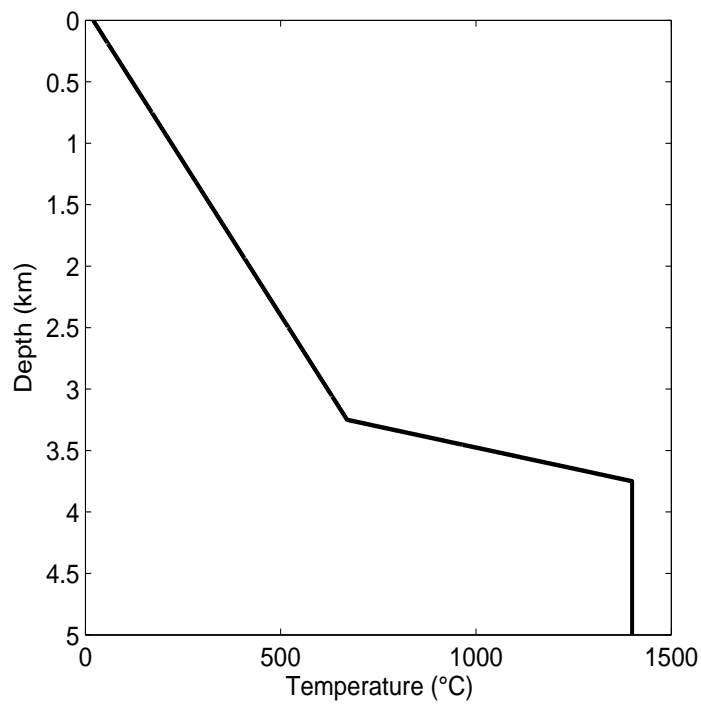


Fig. 4. Temperature profile with a sharp increase at about 3.5 km depth.

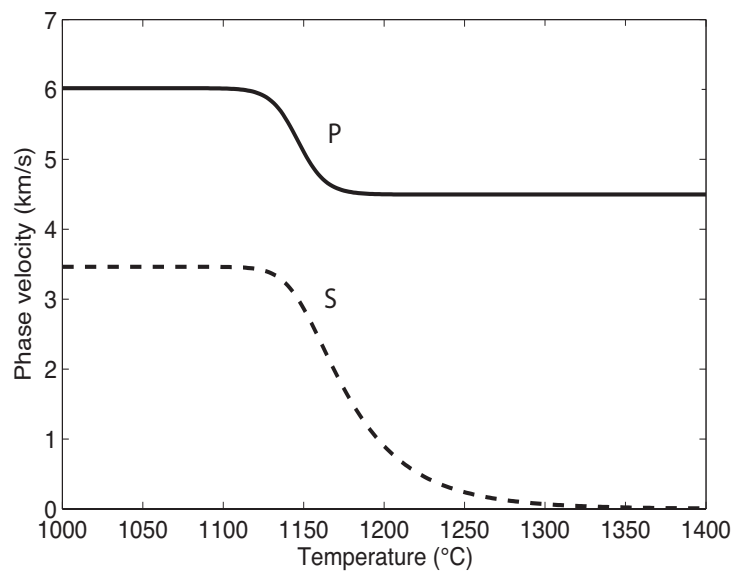


Fig. 5. Phase-velocity profiles as a function of temperature at 10 Hz.

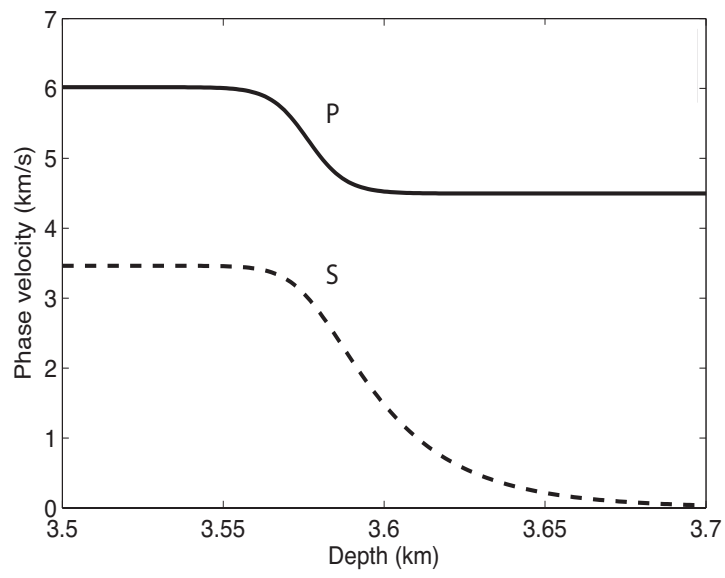


Fig. 6. Phase-velocity profiles as a function of depth at 10 Hz for the GBF, based on the temperature profile of Figure 4.

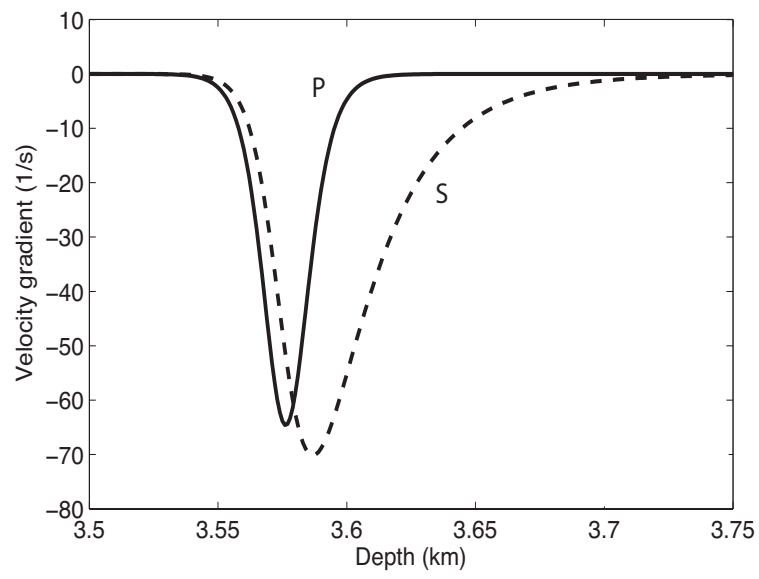


Fig. 7. Vertical gradient of the P and S-wave velocities in the transition zone at 10 Hz.

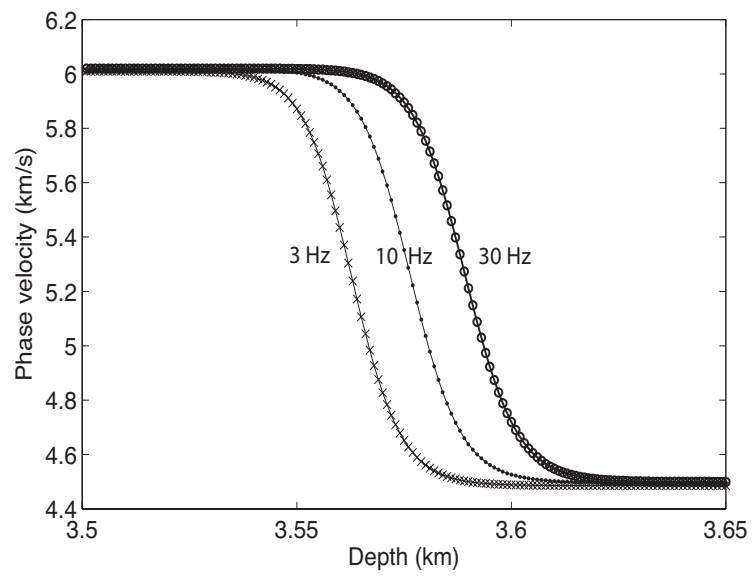


Fig. 8. Phase-velocity profiles for P waves at 3, 10 and 30 Hz.

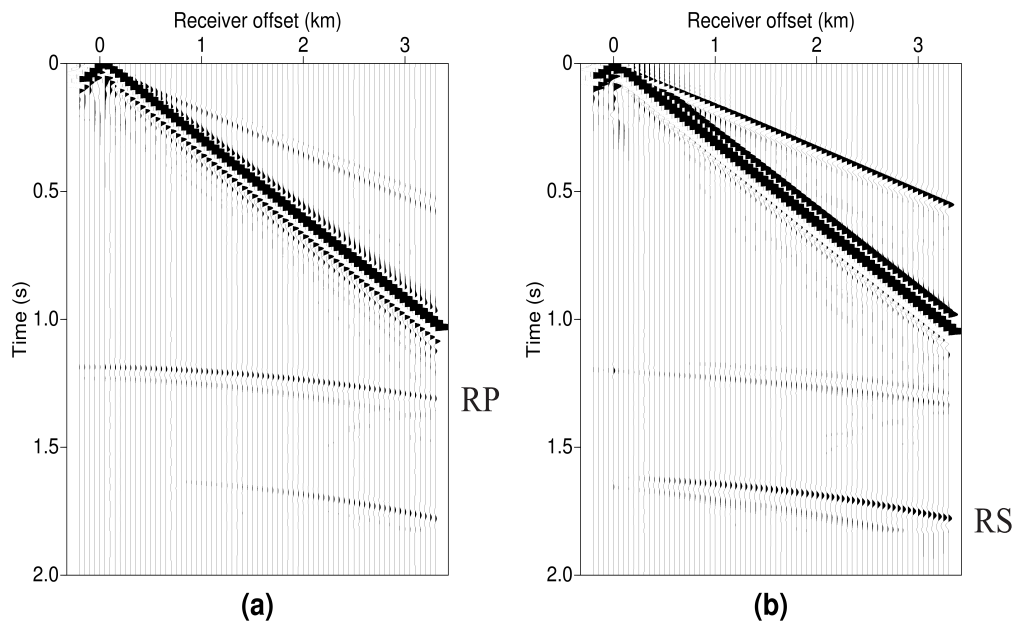


Fig. 9. Synthetic shots calculated from a 2D model with a vertical source at the surface, where a) shows the vertical component and b) the horizontal component. In both panels we can see the reflections of the P-waves (RP) and S-waves (RS) from the transition zone.

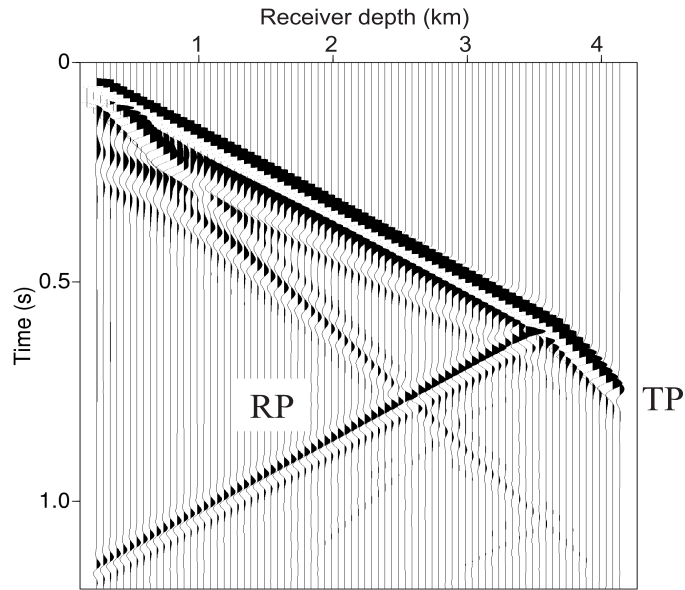


Fig. 10. Synthetic VSP in the melted zone due to a vertical source located at the surface (vertical component). RP indicates the reflected wave and TP the transmitted P wave.

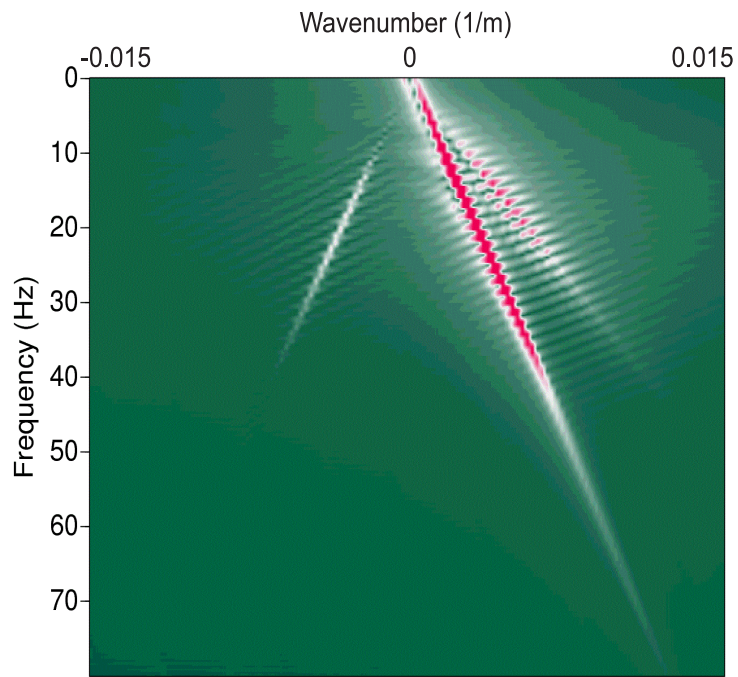


Fig. 11. An f - k plot of the VSP shows that the dispersion effects are moderate.