

***Interactive comment on “Active layer thermal monitoring at Fildes Peninsula, King George Island, Maritime Antarctica” by R. F. M. Michel et al.***

**R. F. M. Michel et al.**

roberto@michel.com

Received and published: 29 July 2014

I would like to thank the anonymous reviewer, the suggestions are very pertinent and the majority was implemented into the corrections improving the quality of the paper.

All coments were uploaded in a .pdf file at the suplement section. Modified figures were uploaded as figures.

Best Regards

Roberto Michel

C725

Please also note the supplement to this comment:

<http://www.solid-earth-discuss.net/6/C725/2014/sed-6-C725-2014-supplement.pdf>

---

Interactive comment on Solid Earth Discuss., 6, 1423, 2014.

C726

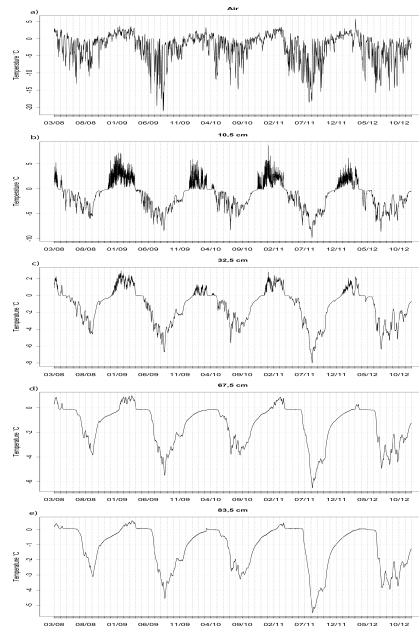


Fig. 1. Figure 2. Daily temperatures records for Air (a), F1 (b), F2 (c), F3 (d) and F4 (e).

C727

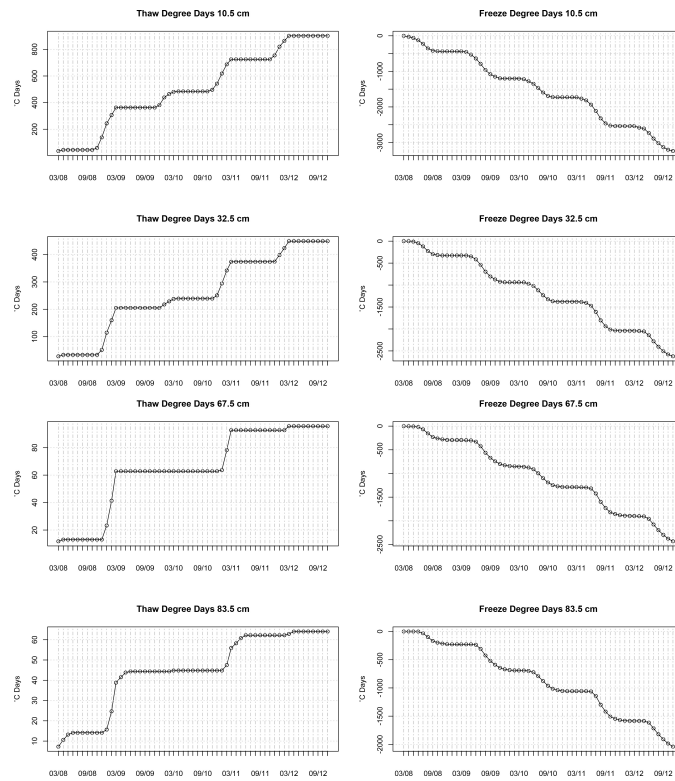


Fig. 2. Figure 4. Thaw degree days and freeze degree days for F1, F2, F3 and F4.

C728

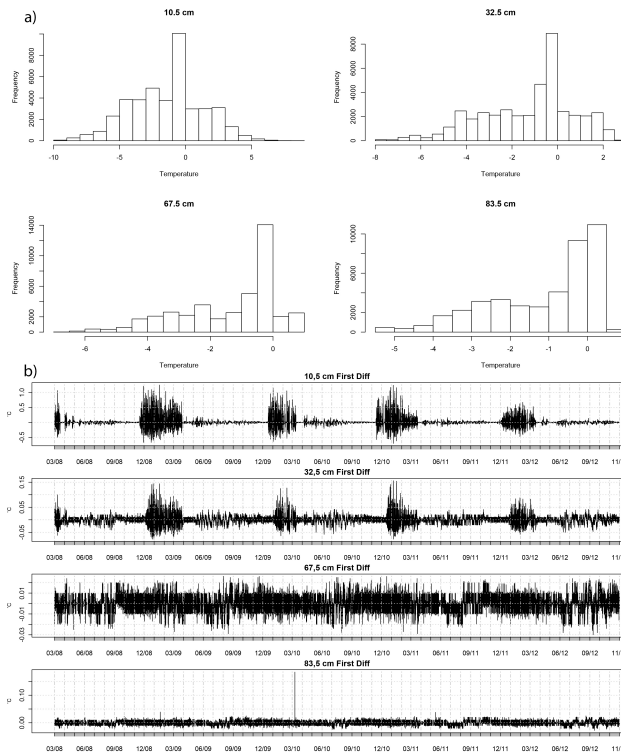


Fig. 3. Figure 5. Histograms and first difference for F1, F2, F3 and F4.

C729

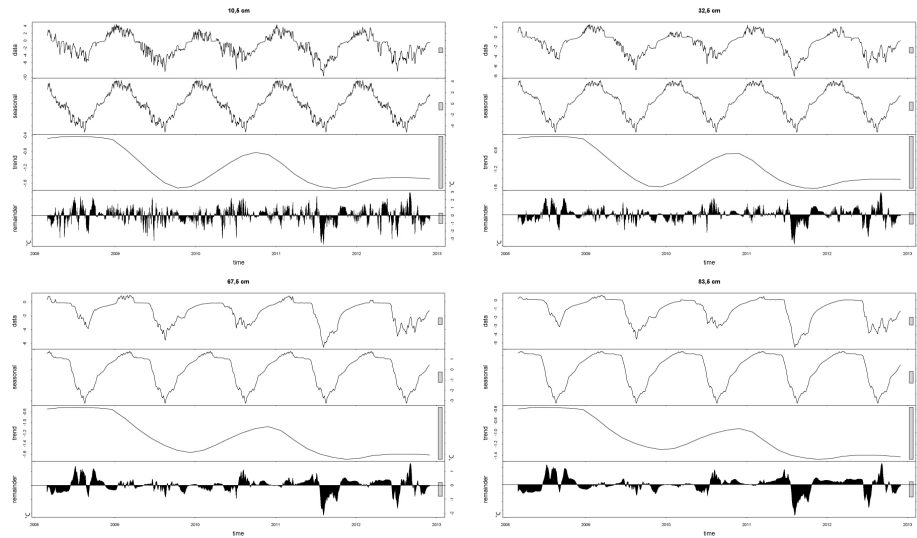
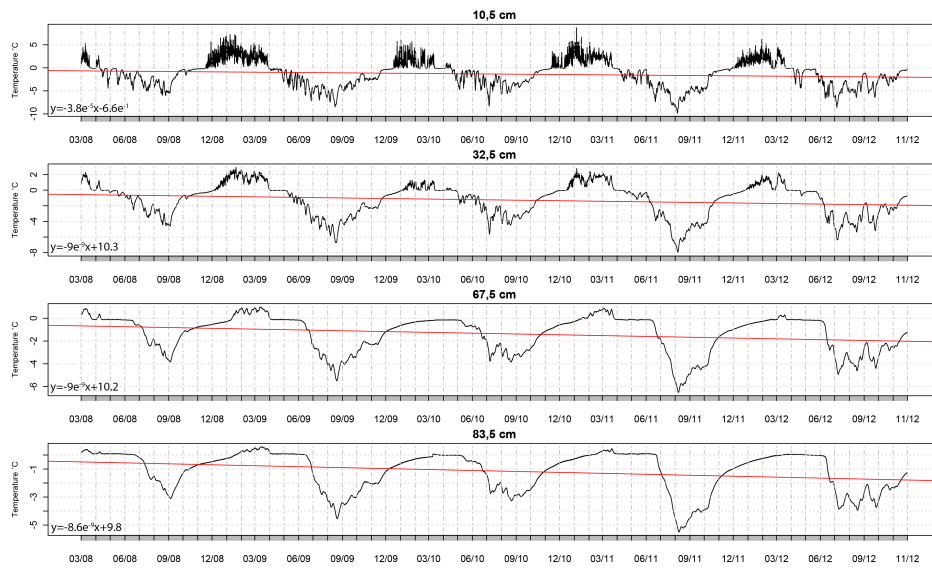


Fig. 4. Figure 6. Loess time series decomposition for F1, F2, F3 and F4.

C730



**Fig. 5.** Figure 7. Linear Regression for F1, F2, F3 and F4.