

This discussion paper is/has been under review for the journal Solid Earth (SE).
Please refer to the corresponding final paper in SE if available.

Numerical models for ground deformation and gravity changes during volcanic unrest: simulating the hydrothermal system dynamics of an active caldera

A. Coco¹, J. Gottsmann¹, F. Whitaker¹, A. Rust¹, G. Currenti², A. Jasim¹, and S. Bunney¹

¹University of Bristol, Earth Science School, Wills Memorial Building, Queen's Road, Clifton BS8 1RJ, UK

²INGV – Sezione di Catania, Piazza Roma, 2, 95125 Catania, Italy

Received: 20 June 2015 – Accepted: 22 June 2015 – Published: 5 August 2015

Correspondence to: A. Coco (armando.coco@bristol.ac.uk)

Published by Copernicus Publications on behalf of the European Geosciences Union.

Numerical models for ground deformation and gravity changes

A. Coco et al.

Title Page

Abstract

Introduction

Conclusions

References

Tables

Figures



Back

Close

Full Screen / Esc

Printer-friendly Version

Interactive Discussion



Abstract

Ground deformation and gravity changes in active calderas during periods of unrest can signal an impending eruption and thus must be correctly interpreted for hazard evaluation. It is critical to differentiate variation of geophysical observables related to volume and pressure changes induced by magma migration from shallow hydrothermal activity associated with hot fluids of magmatic origin rising from depth. In this paper we present a numerical model to evaluate the thermo-poroelastic response of the hydrothermal system in a caldera setting by simulating pore pressure and thermal expansion associated with deep injection of hot fluids (water and carbon dioxide). Hydrothermal fluid circulation is simulated using TOUGH2, a multicomponent multiphase simulator of fluid flows in porous media. Changes in pore pressure and temperature are then evaluated and fed into a thermo-poroelastic model (one-way coupling), which is based on a finite-difference numerical method designed for axi-symmetric problems in unbounded domains.

Based on data for the Campi Flegrei caldera (Italy), a series of simulations assess the influence of fluid injection rates and mechanical properties on the hydrothermal system, uplift and gravity. Heterogeneities in hydrological and mechanical properties associated with the presence of ring faults are a key determinant of the fluid flow pattern and consequently the geophysical observables. Peaks (in absolute value) of uplift and gravity change profiles computed at the ground surface are located close to injection points (namely at the centre of the model and fault areas). Temporal evolution of the ground deformation indicates that the contribution of thermal effects to the total uplift is almost negligible with respect to the pore pressure contribution during the first years of the unrest, but increases in time and becomes dominant after a long period of the simulation. After a transient increase over the first years of unrest, gravity changes become negative and decrease monotonically towards a steady state value.

Since the physics of the investigated hydrothermal system is similar to any fluid-filled reservoir, such as oil fields or CO₂ reservoirs produced by sequestration, the generic

SED

7, 2055–2107, 2015

Numerical models for ground deformation and gravity changes

A. Coco et al.

Title Page

Abstract

Introduction

Conclusions

References

Tables

Figures

⏪

⏩

◀

▶

Back

Close

Full Screen / Esc

Printer-friendly Version

Interactive Discussion



formulation of the model will allow it to be employed in monitoring and interpretation of deformation and gravity data associated with other geophysical hazards that pose a risk to human activity.

1 Introduction

Variations in geophysical observables, such as ground deformation at active volcanoes, are useful indicators of subsurface mass and density changes and can be evaluated as precursory signals to an impending eruption via data modelling. For caldera volcanoes in particular, earlier models focused on explaining ground deformation by magma emplacement (Anderson, 1937; Mogi, 1958; Bonafede et al., 1986; Bianchi et al., 1987; De Natale et al., 1991). More recently, models also consider the perturbation of hydrothermal systems for example by pore pressure changes and thermal expansion as sources of spatio-temporal variations in deformation and gravity signals (Casertano, 1976; Todesco et al., 2003, 2010; Gottsmann et al., 2006a, b; Chiodini et al., 2007; Hurwitz et al., 2007; Hutnak et al., 2009; Ingebritsen et al., 2010; Rinaldi et al., 2010, 2011; Troiano et al., 2011).

For pre-eruptive hazard assessment it is fundamental to disentangle the signals generated by hydrothermal perturbations from those related to magma movement towards the surface (Gottsmann et al., 2003, 2006a; Todesco and Berrino, 2005a, b; Todesco et al., 2010; Rouwet et al., 2014). Few deformation models account for significant complexities such as heterogeneities in key hydrological and mechanical properties of matrix and faults, which might influence both the path of ascending magma and the sub-surface circulation of hydrothermal fluids. Here we present a numerical model to evaluate ground deformation and gravity changes caused by the hydrothermal fluid circulation in active calderas, taking into account the above mentioned complexities.

Numerical models for ground deformation and gravity changes

A. Coco et al.

Title Page

Abstract

Introduction

Conclusions

References

Tables

Figures



Back

Close

Full Screen / Esc

Printer-friendly Version

Interactive Discussion



2 Background and motivation

Although the model is applicable to any caldera system, the model parametrisation in this paper is based on data available from the Campi Flegrei caldera (CFc) in Italy. The Campi Flegrei, situated to the west of Naples, formed as a result of two structural collapses associated with the eruptions of the Campanian Ignimbrite (39 ka) and the Neapolitan Yellow Tuff (14 ka) (Orsi et al., 1996; Rolandi et al., 2003; Deino et al., 2004). The CFc has received growing attention from the scientific community due to its reawakening in the last 50 years after a period of quiescence since the last eruption in 1538 with background slow subsidence at a rate of $\sim 1.5 \text{ cm yr}^{-1}$ (Parascondola, 1947).

Renewed unrest was associated with two periods of bradyseism (1969–1972 and 1982–1984), with a total vertical deformation of about 3.5 m (Troise et al., 2008). To date these uplifts have not culminated in an eruption. After 1984 a period of more than 20 years of general subsidence followed, interrupted sporadically by a series of minor uplift events. Since 2006 the caldera started uplifting again with an increased rate from 2011 (De Martino et al., 2014). During the whole reawakening phase, ground deformations have been accompanied by increased seismicity (De Natale et al., 1991), changes in geochemical parameters related to the fumarolic activity (Allard et al., 1991; Di Vito et al., 1999; Chiodini et al., 2001) and significant variations in gravity (Berrino et al., 1984; Gottsmann et al., 2003; Todesco and Berrino, 2005a). Maximum ground deformation is recorded near the town of Pozzuoli, while the main fumarolic activities occur $\sim 800 \text{ m}$ away at La Solfatara. Here carbon dioxide represents a substantial volume fraction of the released gas, with a $\text{CO}_2/\text{H}_2\text{O}$ molar ratio ranging from 0.17 to 0.30 (Chiodini et al., 2001) and an average diffuse CO_2 degassing of about 1500 t day^{-1} (Chiodini et al., 2001; Todesco et al., 2003; Aiuppa et al., 2013).

Variations in geophysical signals have also been reported at the periphery of the caldera system. Large gravity gradients compared to the deduced local free-air gravity gradient of $-290 \pm 5 \mu\text{Gal m}^{-1}$ (Berrino et al., 1984) have been observed at the structural boundaries of the caldera complex (Gottsmann et al., 2006a). These observations point

SED

7, 2055–2107, 2015

Numerical models for ground deformation and gravity changes

A. Coco et al.

Title Page

Abstract

Introduction

Conclusions

References

Tables

Figures

⏪

⏩

◀

▶

Back

Close

Full Screen / Esc

Printer-friendly Version

Interactive Discussion



towards structurally controlled density changes and hence the presence of multiple secondary sources at a distance from the area of maximum deformation (Gottsmann et al., 2006a, c; Amoruso et al., 2014) that are likely associated with caldera ring faults.

Ring faults significantly alter strain partitioning and fluid propagation and hence must be considered for the interpretation of geophysical signals (De Natale and Pingue, 1993; De Natale et al., 1997; Beauducel and De Natale, 2004; Folch and Gottsmann, 2006; Troiano et al., 2011; Jasim et al., 2015). In this paper we explore the impact of vertical and lateral mechanical heterogeneities in the shallow crust beneath the CFc, including ring faults, on monitoring signals at the surface (ground deformation and gravity changes) as a consequence of unrest caused by a perturbation of the shallow hydrothermal system. Unrest is modelled by the injection of a mixture of hot water and carbon dioxide at the center of the caldera system, which is associated with the main fumarolic activity at La Solfatara, and at the base of the ring faults, which simulates fluid release from a deeper pressurized reservoir (Jasim et al., 2015). We investigate the separated contribution of pore pressure and thermal effects to total ground deformation through a series of generic test cases which compare the single (central) injection model with the simulation of multiple injection points. We then show that different injection rates alter the timescales and amplitudes of deformation and gravity changes during periods of unrest. A sensitivity analysis of fault mechanical properties is also provided.

3 Model parameterisation

In order to account for the complex mechanical structure of the shallow crust and the caldera infill at CFc, the modelling domain is subdivided into several regions with different hydrological and mechanical properties. The model is 2-D axi-symmetric and defined by the coordinates (r, z) , with r the radial distance and z the vertical position. The hydrological model is 1.5 km deep and is closed to heat and fluid flow in the radial direction and to fluid flow across much of the basal boundary (Fig. 2, detailed in

SED

7, 2055–2107, 2015

Numerical models for ground deformation and gravity changes

A. Coco et al.

Title Page

Abstract

Introduction

Conclusions

References

Tables

Figures

⏪

⏩

◀

▶

Back

Close

Full Screen / Esc

Printer-friendly Version

Interactive Discussion



Sect. 3.1), whereas the mechanical model is unbounded in the radial and downward vertical direction (Fig. 3, detailed in Sect. 3.2). The model is designed such that the La Solfatara fumarolic field is on its rotational axis.

Two high angle faults (Faults A and B) represent the ring faults of the Neapolitan Yellow Tuff (14 ka) and Campanian Ignimbrite (39 ka) eruptions, respectively. The geometry of the faults is represented in Fig. 1. Following the approach of Jasim et al. (2015), the upper point P is placed at ($r = 3$ km, $z = -200$ m) for Fault A and ($r = 6.5$ km, $z = 0$ m) for Fault B. Both faults are steeply inclined (with dip angles of $\theta = -10^\circ$ and $\theta = -15^\circ$, respectively) and penetrate the system up to a depth of 3 km ($d = 2.8$ km for Fault A and $d = 3$ km for Fault B). The geometry of the faults is modelled according to fault planes derived from local earthquake data (De Natale and Pingue, 1993; Troise et al., 2008), as well as the inverse modelling by Beauducel and De Natale (2004). While Fault B extends to the ground surface, Fault A tips out at a depth of $z = -200$ m (Rosi and Sbrana, 1987; Orsi et al., 1996; Jasim et al., 2015). The fault zone is divided into two sub-zones with different hydrological and mechanical characteristics: a central narrow (25 m wide) *core zone* is bordered on both sides by a wider (100 m wide) *damage zone*, the latter having properties intermediate between those of the core and the rock surrounding the fault zone (Tables 1 and 2).

3.1 Hydrothermal model

Simulation of the hydrothermal circulation is performed by the well-known TOUGH2 software, a fluid flow and heat transport simulator of multiphase multicomponent fluids in porous media accounting for phase changes, relative permeability of each phase and capillarity pressure (Pruess et al., 1999). TOUGH2 solves a system of mass and energy balance equations that can be summarised as follows (for a general case of a fluid with k components):

$$\frac{\partial Q_\alpha}{\partial t} + \nabla \cdot F_\alpha - q_\alpha = 0, \quad \alpha = M_1, \dots, M_k, E, \quad (1)$$

Numerical models for ground deformation and gravity changes

A. Coco et al.

Title Page

Abstract

Introduction

Conclusions

References

Tables

Figures



Back

Close

Full Screen / Esc

Printer-friendly Version

Interactive Discussion



where Q is the accumulation term, F the flux and q the source (or sink) term, while the subscript $\alpha = M_i$ or E refers to the mass balance equation for the i th component or the energy balance equation, respectively. The accumulation terms and fluid fluxes (based on the extended Darcy's law) for mass balance equations are:

$$5 \quad Q_{M_i} = \phi \sum_{\beta} \rho_{\beta} S_{\beta} \chi_{\beta}^i, \quad F_{M_i} = \sum_{\beta} \chi_{\beta}^i F_{\beta}, \quad \text{with } F_{\beta} = -\mathcal{K} \mathcal{K}_{r\beta} \rho_{\beta} \mu_{\beta}^{-1} (\nabla P_{\beta} - \rho_{\beta} \hat{g}), \quad (2)$$

where the subscript $\beta = l$ or g refers to the liquid or gas phase respectively, ϕ is the porosity, ρ_{β} the density, S_{β} the saturation, χ_{β}^i the mass fraction of the i th component in the β phase, \mathcal{K} and $\mathcal{K}_{r\beta}$ are the absolute and relative permeability, respectively, μ_{β} the viscosity, P_{β} the fluid pressure and \hat{g} the gravitational acceleration. For the energy

10 balance equation, the accumulation term (Q_E) and the heat flux (F_E) are:

$$Q_E = \phi \sum_{\beta} (\rho_{\beta} e_{\beta} S_{\beta}) + (1 - \phi) \rho_r C_r T, \quad F_E = -\lambda \nabla T + \sum_{\beta} h_{\beta} F_{\beta},$$

where e_{β} and h_{β} are the specific internal energy and enthalpy of the phase β , T is the temperature, and ρ_r , C_r , and λ are the density, specific heat, and the thermal conductivity of the rock respectively.

15 In this paper we simulate fluids of magmatic origin entering the domain as a mixture of two components ($k = 2$): hot water and carbon dioxide. The 2-D axi-symmetric model (Fig. 2) extends 10 km in the radial direction in order to cover the entire CF volcanic area, the radius of which is estimated to be some 12 km (Orsi et al., 1996). The depth of the domain for the hydrological model is 1.5 km, since the focus is the shallow hydrothermal activity, maintaining temperature and pore pressure of the entire simulation

20 within the range considered by TOUGH2 equation of state modules (which does not extend to super-critical fluids).

Atmospheric boundary conditions ($P = 0.101325$ MPa and $T = 20^{\circ}\text{C}$) are prescribed on the top of the domain $z = 0$; lateral boundaries are assumed to be impervious and adiabatic. A heat flux of 0.195 W m^{-2} is assigned at the impervious bottom boundary

25

Numerical models for ground deformation and gravity changes

A. Coco et al.

Title Page	
Abstract	Introduction
Conclusions	References
Tables	Figures
⏪	⏩
◀	▶
Back	Close
Full Screen / Esc	
Printer-friendly Version	
Interactive Discussion	



during the entire simulation, specified in order to sustain a temperature gradient comparable to that estimated for CFc ($\sim 130^\circ\text{Ckm}^{-1}$, Rosi and Sbrana, 1987; De Siena et al., 2010; Piochi et al., 2014).

Cell centers of the finite-volume mesh used in TOUGH2 for the 1.5 km depth domain are shown in Fig. 4a. Hydrological parameters (permeability, density and porosity) are obtained from averaging drilling data for AGIP's report (Piochi et al., 2014), while the thermal properties of the rocks (thermal conductivity and specific heat) are derived from Rosi and Sbrana (1987) and Todesco et al. (2010) (see Table 1).

Although all parameter values are specified according to measured data at CFc, the rock permeability may vary over several orders of magnitude, and this variation may substantially influence the fluid flow and heat transport in all the simulations. Jasim et al. (2015) explore the sensitivity of the hydrological system to matrix (caldera fill) and fracture hydrological properties. However, exploration of a wide range of possible hydrological values goes behind the scope of this paper.

Fault zones are assigned the hydrothermal properties of the surrounding rock, except for the permeability, which is represented by an anisotropic tensor \mathcal{K} of Eq. (2) having an increased permeability along the plane of the fault. Referring to Fig. 1, \mathcal{K} is a diagonal tensor in the local coordinates (ξ, η) of the axi-symmetric model, i.e.

$$\mathcal{K} = \begin{pmatrix} k_\eta & 0 \\ 0 & k_\xi \end{pmatrix}, \quad (3)$$

where k_η and k_ξ are the permeabilities along the orthogonal and parallel direction to the fault, respectively. We observe that in Cartesian coordinates (r, z) the permeability tensor $\mathcal{K} = \begin{pmatrix} k_r & k_{rz} \\ k_{rz} & k_z \end{pmatrix}$ is no longer diagonal (i.e. $k_{rz} \neq 0$); therefore the fluid flow along the vertical direction is affected also by a pressure change in the horizontal direction and vice versa. This is expressed after Arnaldsson et al. (2014) as:

$$k_r = k_\xi \cos^2 \theta + k_\eta \sin^2 \theta, \quad k_z = k_\xi \sin^2 \theta + k_\eta \cos^2 \theta, \quad k_{rz} = (k_\xi - k_\eta) \sin \theta \cos \theta,$$

Numerical models for ground deformation and gravity changes

A. Coco et al.

Title Page	
Abstract	Introduction
Conclusions	References
Tables	Figures
◀	▶
◀	▶
Back	Close
Full Screen / Esc	
Printer-friendly Version	
Interactive Discussion	



where k_η equals the isotropic permeability of the surrounding rock (set at 5×10^{-15} and 10^{-15} m^2 for layers A and B) and higher values of k_ξ are chosen for the core ($k_\xi = 10^{-12} \text{ m}^2$) and damage ($k_\xi = 5 \times 10^{-13} \text{ m}^2$) zones of the faults.

In order to simulate the fumarole activities at La Solfatara, a central conduit with a higher permeability is placed at the center of the domain and represented by a vertical cylinder with a radius of 200 m. A transition zone is specified between this conduit and the bulk of the caldera fill which has intermediate hydrothermal properties, as in previous simulations of Todesco et al. (2010) and Jasim et al. (2015) (Table 1).

3.2 Geomechanical and gravity models

The elastic response of a porous medium to pore pressure and temperature changes associated with the circulation of hot fluids is modelled by linear thermo-poroelasticity theory. The thermo-poroelastic effects are taken into account by including the pore pressure and temperature terms in the Hooke's law (Rice and Cleary, 1976; McTigue, 1986):

$$\boldsymbol{\epsilon} = \frac{1}{2\mu} \left(\boldsymbol{\sigma} - \frac{\nu}{1+\nu} \text{tr}(\boldsymbol{\sigma}) \mathbf{I} \right) + \frac{1}{3} \left(\left(\frac{1}{K_d} - \frac{1}{K_s} \right) \Delta P + \beta \Delta T \right) \mathbf{I}, \quad (4)$$

where $\boldsymbol{\epsilon}$ and $\boldsymbol{\sigma}$ are the strain and stress tensors, respectively, μ is the rigidity modulus, ν the Poisson's ratio, $\text{tr}(\boldsymbol{\sigma}) = \sigma_{xx} + \sigma_{yy} + \sigma_{zz}$ the trace of $\boldsymbol{\sigma}$, \mathbf{I} the identity tensor, ΔP and ΔT are pore pressure and temperature changes, respectively, K_d is the bulk modulus in drained conditions, K_s is the bulk modulus of the solid constituent (Rice and Cleary, 1976; Rinaldi et al., 2010), and β is the volumetric thermal expansion coefficient of the solid matrix. Since we assume that deformations occur slowly, the governing equations are represented by the equations of equilibrium $\nabla \cdot \boldsymbol{\sigma} = 0$ with $\boldsymbol{\sigma}$ obtained by the inversion of Eq. (4), leading to the following set of Cauchy–Navier equations (Fung,

Title Page

Abstract

Introduction

Conclusions

References

Tables

Figures



Back

Close

Full Screen / Esc

Printer-friendly Version

Interactive Discussion



1965):

$$\begin{aligned}\nabla \cdot \boldsymbol{\sigma} &= 0, \\ \boldsymbol{\sigma} &= \frac{2\mu\nu}{1-2\nu} \text{tr}(\boldsymbol{\epsilon}) \mathbf{I} + 2\mu \boldsymbol{\epsilon} - \alpha \Delta P \mathbf{I} - K_d \beta \Delta T \mathbf{I}, \\ \boldsymbol{\epsilon} &= \frac{1}{2}(\nabla \mathbf{u} + (\nabla \mathbf{u})^T),\end{aligned}\tag{5}$$

where $\alpha = 1 - K_d/K_s$ is the Biot–Willis coefficient and \mathbf{u} is the deformation vector, and where we have used the relation

$$K_d = \frac{2\mu(1+\nu)}{3(1-2\nu)}.$$

The third equation of Eq. (5) represents the linear approximation of the strain–deformation relation for small deformations.

Free-stress boundary conditions $\boldsymbol{\sigma} \cdot \mathbf{n} = 0$ are prescribed on the surface, where \mathbf{n} is the outward unit vector orthogonal to the surface. Unlike the domain for the hydrothermal model (Fig. 2), the computational domain of the problem defined by Eq. (5) is unbounded in the radial r and vertical z downward directions, and a vanishing displacement is assigned at infinite distance:

$$\lim_{r \rightarrow \infty} \mathbf{u} = \lim_{z \rightarrow -\infty} \mathbf{u} = 0.$$

Since we assume that the problem is axi-symmetric, we solve the 2-D axi-symmetric version of Eqs. (5) in the unknown $\mathbf{u} = (u, v)$, where u and v are the radial and vertical deformation, respectively.

The unbounded domain is discretized by a quasi-uniform Cartesian grid (Fig. 4b), whose resolution is finest close to the axis of symmetry and smoothly decreases toward infinity (Grosch and Orszag, 1977; Fazio and Jannelli, 2014). In this way artefacts introduced by artificial truncation of the domain are avoided. Equations (5) are

Numerical models for ground deformation and gravity changes

A. Coco et al.

Title Page

Abstract

Introduction

Conclusions

References

Tables

Figures

⏪

⏩

◀

▶

Back

Close

Full Screen / Esc

Printer-friendly Version

Interactive Discussion



discretized and solved by extending the finite-difference numerical method proposed by Coco et al. (2014) for Cauchy–Navier equations to thermo-poroelasticity equations.

Heterogeneities in mechanical properties (μ and ν) are taken into account. In particular, the rigidity modulus μ for each layer of Fig. 3 is derived from seismic P wave velocity V_p data (Orsi et al., 1996; Zollo et al., 2008; Piochi et al., 2014) by the application of the formula of Mavko et al. (2009):

$$\mu = \frac{V_p^2 \rho (1 - 2\nu)}{2(1 - \nu)}.$$

Density values of the porous medium ρ are derived from V_p by the Brocher equation (Brocher, 2005):

$$\rho = 1.6612V_p - 0.4721V_p^2 + 0.067V_p^3 - 0.0043V_p^4 + 0.000106V_p^5.$$

An appropriate value of the Poisson's ratio for volcanic regions of $\nu = 0.25$ is specified for the whole domain, except in the damage and core zones of the fault areas, where higher values (0.30 and 0.40 respectively) are specified on the basis of the nature of the rock (Gercek, 2007). Rigidity values are reduced in the fault zones ($\mu = 0.385$ and 0.0357 GPa for the fault core and damage zone, respectively, which correspond to $E = 10^9$ and 10^8 , where E is the Young modulus). The volumetric thermal expansion coefficient is $\beta = 10^{-5} \text{K}^{-1}$ after Rinaldi et al. (2010) and Todesco et al. (2010). All values are reported in Table 2.

In order to separate the contribution of pore pressure to the total ground deformation from thermal effects, we solve two different sets of differential equations for the mechanical simulation:

$$\begin{cases} \nabla \cdot \boldsymbol{\sigma}_T = 0 \\ \boldsymbol{\sigma}_T = \tilde{\boldsymbol{\sigma}} + 3\beta\Delta T, \\ \boldsymbol{\sigma}_T \cdot \mathbf{n} = 0 \text{ on } \Gamma \end{cases}, \quad \begin{cases} \nabla \cdot \boldsymbol{\sigma}_P = 0 \\ \boldsymbol{\sigma}_P = \tilde{\boldsymbol{\sigma}} + \alpha\Delta P \\ \boldsymbol{\sigma}_P \cdot \mathbf{n} = 0 \text{ on } \Gamma \end{cases} \quad (6)$$

Numerical models for ground deformation and gravity changes

A. Coco et al.

Title Page

Abstract

Introduction

Conclusions

References

Tables

Figures

⏪

⏩

◀

▶

Back

Close

Full Screen / Esc

Printer-friendly Version

Interactive Discussion



where $\tilde{\sigma} = \lambda \operatorname{tr}(\epsilon)I + 2\mu\epsilon$ is the elastic stress tensor (i.e. without taking into account pore pressure and temperature contributions). Let \mathbf{u}_T and \mathbf{u}_P be the solutions of the two problems (Eq. 6), respectively. As a result of the linearity of the stress–strain relationship $\tilde{\sigma}(\mathbf{u})$ and the divergence operator, the total ground deformation \mathbf{u} can be expressed as the sum of the solutions to the two problems (namely $\mathbf{u} = \mathbf{u}_T + \mathbf{u}_P$). In practice, it is sufficient to solve only one of the problems (Eq. 6) and obtain the other solution by difference.

Gravity changes Δg are computed by solving the following boundary value problem for the gravitational potential ϕ_g (Currenti, 2014):

$$\nabla^2 \phi_g = -4 \pi G \Delta \rho, \quad \phi_g = 0 \text{ at infinity}, \quad \Delta g = -\frac{\partial \phi_g}{\partial z} \quad (7)$$

where G is the gravitational constant and $\Delta \rho$ is the density distribution change. The finite-difference method presented by Coco and Russo (2013) is applied to solve the problem (Eq. 7) on an infinite domain, using the coordinate transformation method (Coco et al., 2014).

4 Numerical simulation scenarios and results

The background hydrothermal fluid circulation is driven by the injection of a mixture of hot water and carbon dioxide at a temperature of about 350°C from the base of the central high-permeable conduit, simulating the input of fluids of magmatic origin. A heat flux is assigned at the bottom impervious boundary at a rate of 0.195 W m⁻². The steady state solution, obtained after a long-lasting injection period (c. 4000 years), is used as the initial condition for the unrest simulations (run up to a final time of 100 years), which are divided into three scenarios described below.

4.1 Modelling scenarios

Scenario I: central injection at the base of the conduit (radius of 200 m) at the same temperature but at an increased rate with respect to that used for the steady-state quiescent solution (see Table 4);

5 **Scenario II – constant mass rate:** Scenario I plus injection at the bases of each fault core zone of a mass equal to that of the central injection (see Table 3);

Scenario III – constant flux rate: Scenario I plus injection at the bases of each fault core zone at a flux rate equal to that of the central injection (see Table 3).

10 Injection at the base of the faults (core zone of Fig. 1, 25 m wide) for Scenarios II and III simulates the possible release of gas from a deeper reservoir ascending along preferential pathways of the fault zone during unrest periods.

Injection rates. Once the rates of the central injection are established, the corresponding injection rates at the base of the faults are determined by Table 3. Rates of hot water and carbon dioxide central injection for both the steady-state and unrest simulations are selected in order to match observed data. The injection rates for the steady-state simulation are chosen so that the total flux (3400 t day^{-1}) and the molar ratio $\text{CO}_2/\text{H}_2\text{O}$ of 0.17 (equating to 1000 t day^{-1} of CO_2 and 2400 t day^{-1} of H_2O) are based on average degassing measured prior to the 1982–1984 bradyseismic crisis (Chiodini et al., 2003; Rinaldi et al., 2010; Todesco et al., 2010). An increased molar ratio was observed at La Solfatara during the bradyseismic event of 1982–1984, with a maximum value of 0.30 (Chiodini et al., 2003). Although this value has been used in some models as the molar ratio of the fluid composition injected to the system (Chiodini et al., 2003), more recent studies have shown that a value of 0.40 provides an improved match between numerical results and the observed gas composition at the surface (Todesco and Berrino, 2005a; Rinaldi et al., 2010; Todesco et al., 2010). No constraint is discussed in the literature for the magnitude of the injection rates and several values have

Numerical models for ground deformation and gravity changes

A. Coco et al.

Title Page

Abstract

Introduction

Conclusions

References

Tables

Figures



Back

Close

Full Screen / Esc

Printer-friendly Version

Interactive Discussion



been adopted in different contexts, although the rates used in Rinaldi et al. (2010) and Todesco et al. (2010) (6000 t day^{-1} of CO_2 and 6100 t day^{-1} of H_2O) provide a good match to observed data. Although there are many other parameters that can influence the mechanical response (including depth of injection and temperature of the injected fluid), in this paper we focus on the influence of the injection rates on the timescale and amplitude of the deformation (Table 4). Where not specified, the injection rates of the unrest $\times 1$ column of Table 4 are used.

Initial conditions. Initial conditions for the unrest simulation are the same for all scenarios and represented in Fig. 5. Due to the injection of hot fluids, the central conduit shows a higher temperature with respect to the rest of the domain, while the pressure approaches hydrostatic, indicative of a steady-state condition. A slight temperature variation is observed at the fault zones, where the locally increased permeability focusses convective fluid flow, with downward flow of cold water via the fault (Jasim et al., 2015). A two-phase plume forms close to the central conduit, according to the results of previous fluid flow simulations (Chiodini et al., 2003; Rinaldi et al., 2010; Todesco et al., 2010).

4.2 Pore pressure, temperature and density changes during unrest

At each time step of the unrest simulations we evaluate changes in pressure ($\Delta P = P - P_0$), temperature ($\Delta T = T - T_0$) and density ($\Delta \rho = \rho - \rho_0$), relative to initial conditions (subscript 0) and use these to compute ground deformation and gravity changes at the surface by Eqs. (5) and (7). Density change is in practice computed as $\Delta \rho = \phi \sum_{\beta} (\rho_{\beta} S_{\beta} - \rho_{\beta 0} S_{\beta 0})$, where subscript $\beta = l$ or g refers to the liquid or gas phase, respectively. We observe that $\Delta \rho$ is mainly driven by the gas saturation change, since densities of liquid and gas do not significantly change during the simulation. For this reason we plot the gas saturation change $\Delta S_g = S_g - S_{g0}$ rather than $\Delta \rho$ (Figs. 5 and 6).

Analysing Scenario I (Fig. 5), we observe that after 6 months of simulated unrest the zone of perturbed pore pressure has already approached the surface ($z = -500 \text{ m}$)

Numerical models for ground deformation and gravity changes

A. Coco et al.

Title Page

Abstract

Introduction

Conclusions

References

Tables

Figures



Back

Close

Full Screen / Esc

Printer-friendly Version

Interactive Discussion



Numerical models for ground deformation and gravity changes

A. Coco et al.

Title Page

Abstract

Introduction

Conclusions

References

Tables

Figures

◀

▶

◀

▶

Back

Close

Full Screen / Esc

Printer-friendly Version

Interactive Discussion



at the central conduit, with a maximum ΔP of about 4 MPa observed at the injection point. Temperature and gas saturation changes remain small and confined to the areas surrounding the injection point. The maximum ΔP of the entire simulation (about 5 MPa) is observed at 3 years. At the same time, gas saturation changes reach the shallower layer ($z = -400$ m), while no changes in temperature are apparent. After 3 years ΔP values decrease; at 10 years hot fluids (warmed by up to $\Delta T \sim 100^\circ\text{C}$) rise up to about $z = -1000$ m and the gas region extends up to the surface. At 100 years, which is the end of the simulation, ΔP values continue to decrease towards a new steady state, while ΔT values keep increasing (with a maximum $\Delta T \sim 130^\circ\text{C}$), extending the central plume laterally by up to 250 m. Gas saturation changes approach the steady state solution, and a single-phase gas region is forming close the surface. We do not observe any significant variation in pore pressure, temperature or density close to the faults, where the values remain the same as the initial condition.

The location of regions where significant changes in pore pressure, temperature and density are observed depends on the background simulation. During the steady-state simulation, fluids are injected only at the center of the model, and thus a two-phase plume develops only in the central conduit, with complete liquid saturation within the fault zones. During the unrest the increased rate of injection at the conduit leads to an increase in pore pressure most markedly at depth within the conduit, but increases in temperature and gas saturation occur at the border of the expanding two-phase plume.

If we vary injection rates in Scenario I (Fig. 6), the amplitudes of ΔP , ΔT and $\Delta\rho$ are strongly (nonlinearly) affected. Regardless of the injection rate, ΔT values continue to increase for the entire simulation (100 years), while ΔP values peak at ~ 3 years. Therefore, the timescale for pore pressure changes to reach the maximum value does not significantly depend on the injection rate. In particular, the maximum ΔP is 2.15 MPa for $\text{UNREST} \times 0.5$, 9.85 MPa for $\text{UNREST} \times 2$ and 14.1 MPa for $\text{UNREST} \times 3$ (all at $t = 3$ years). The maximum ΔT is observed at the final simulation time ($t = 100$ years) and is 92.1°C for $\text{UNREST} \times 0.5$, 171°C for $\text{UNREST} \times 2$ and 181°C for $\text{UNREST} \times 3$. The extent of the central plume increases for the entire simulation: af-

ter $t = 100$ years the plume has extended laterally by up to 200 m for $\text{UNREST} \times 0.5$, 450 m for $\text{UNREST} \times 2$ and 550 m for $\text{UNREST} \times 3$.

In contrast to Scenario I, in Scenarios II and III injection at the base of the faults induces a perturbation in pore pressure, temperature and density at the fault zones (mainly located on the hanging wall), while the behavior at the central conduit is similar in all three scenarios (Fig. 5). Due to the higher injection rates at the base of the faults, Scenario III shows more pronounced perturbations than Scenario II. Both faults behave similarly in Scenario III: the region with significant pore pressure change approaches the surface after 6 months (with a maximum ΔP of about 2.5 MPa), while temperature and gas saturation changes remain confined around injection points for up to 10 years. Similar to the central conduit, ΔP near the faults starts decreasing after 3 years towards a new steady state condition. For Scenario III, at $t = 100$ years ΔT has reached 170°C and extends up to 200 m from the faults, while a single-phase gas region has formed near the surface. Important differences however exist between Scenarios II and III. In Scenario II, maximum ΔP is about 1 MPa for Fault A and 0.4 MPa for Fault B, and ΔT is about 100°C for Fault A and 60°C for Fault B, while gas saturation does not exceed 0.4 for either fault. Hence not only are there differences between the magnitudes of perturbations near Fault A and Fault B but also the time needed to observe the perturbations at the surface is greater than 100 years.

4.3 Ground deformation

At each time step of the unrest simulations, changes in pore pressure and temperature are interpolated from the finite-volume mesh of the hydrological model to the finite-difference mesh of the mechanical model (the two meshes are represented in Fig. 4) and fed into the Eq. (5). This is known as one-way coupling between hydrological and mechanical models, as used previously by a number of studies (Hurwitz et al., 2007; Hutnak et al., 2009; Rinaldi et al., 2010; Todesco et al., 2010). It is a simplified approach compared with a fully coupled model that also takes into account the influence of stress

Numerical models for ground deformation and gravity changes

A. Coco et al.

Title Page

Abstract

Introduction

Conclusions

References

Tables

Figures



Back

Close

Full Screen / Esc

Printer-friendly Version

Interactive Discussion



and strain on permeability and porosity during the simulation (Neuzil, 2003; Rutqvist, 2011).

In Scenario I (Fig. 7), for the first 10 years of unrest the uplift is maximum at the center of the domain and decays radially. Vertical and horizontal displacements reflect the Mogi solution for a small spherical source (Mogi, 1958). The profile obtained at $t = 100$ years does not reflect a Mogi solution and presents a maximum total uplift of 21 cm at $r = 300$ m, decaying rapidly as radial distance increases. Temporal evolution of the ground deformation at the center of the domain throughout 100 years of unrest (Fig. 8) indicates that the contribution of thermal effects (v_T) to the total ground deformation is almost negligible with respect to the pore pressure contribution (v_P) during the first years of the unrest, but increases in time and eventually becomes dominant. In particular, for lower injection rates (unrest $\times 0.5$ of Table 4) the vertical deformation due to thermal effects only exceeds the pore pressure contribution after more than 100 years, while for higher injection rates (unrest $\times 2$ and $\times 3$ of Table 4) it takes less than 50 years. The amplitude of the deformation is nonlinearly dependent on the injection rate, while the timescale of the first local maximum is largely independent of injection rate, occurring after ~ 3 years of unrest in all simulations. Vertical displacement due to pore pressure effects (v_P) increases very rapidly with the onset of unrest. After this strong initial pressurization (lasting about 3 years), vertical deformation starts decreasing towards a new steady state value. Thermal effects strongly affect the long-term behavior and their importance increase with increasing injection rates. Consequently the timing of the local minimum, prior to the thermally-induced later monotonic increase, occurs earlier for higher injection rates. Although we show only the temporal variation of the vertical deformation at the center of the model for Scenario I, a similar pattern is observed localized around both faults for Scenarios II and III.

In Scenario II (Fig. 9) the deformation profile reflects the injection of fluids at the fault zones. Maximum vertical deformation is observed at the center of the model and two local maxima correspond to the faults (Fig. 9a). Magnitude of peak displacements

SED

7, 2055–2107, 2015

Numerical models for ground deformation and gravity changes

A. Coco et al.

Title Page

Abstract

Introduction

Conclusions

References

Tables

Figures

⏪

⏩

◀

▶

Back

Close

Full Screen / Esc

Printer-friendly Version

Interactive Discussion



both horizontal and vertical reduces from centre to Fault A and from Fault A to Fault B, reflecting the different injection rates.

After about $t = 3$ years the vertical deformation at the center of the model reaches a temporary maximum (see solid line in Fig. 8 for Scenario I), then decreases toward a lower value (at about $t = 10$ years) while deformation on faults continues to increase. At $t = 100$ years the vertical displacement at the center of the model increases again toward a steady state solution (solid line of Fig. 8), while deformation on faults decreases toward a lower value. We observe in Fig. 9c and d that the vertical deformation profile at $t = 100$ years is almost exclusively attributable to thermal effects, which are negligible in the first years of the unrest simulation. Horizontal deformation shows a Mogi-like pattern close to the central conduit (Mogi, 1958), while two peaks are observed close to the fault zones. For both peaks the deformation profile is steeper on the side towards the center of the domain due to the fault inclination (negative dip-angle, Fig. 1), since the steeper deformation profile is always observed in the hanging wall.

We finally observe for all the plots that the deformation profile is relatively smooth above fault A, while there is a sharp kink above Fault B, because such fault reaches the surface (Fig. 2). Vertical deformation at the center of the domain throughout the entire simulation (100 years) is practically the same as for Scenario I (Fig. 8), indicating that pore pressure and temperature changes along the faults do not significantly affect the mechanical behavior of the fumarole.

In Scenario III (Fig. 10) vertical deformation on faults is greater than at the center of the model (up to $t = 10$ years). Although pore pressure change at the faults shows a lower value compared with that close to the injection point, it is more vertically extensive (Fig. 5) due to the lower vertical permeability of the central conduit compared to the faults, causing a larger uplift. Vertical deformation at the axis of symmetry is also slightly amplified (by the mechanical influence of faults) with respect to the one observed in Scenarios I and II.

Except for faults, the mechanical heterogeneities described so far depend only on depth, resulting in a 1-D heterogeneity structure. A complex mechanical structure for

SED

7, 2055–2107, 2015

Numerical models for ground deformation and gravity changes

A. Coco et al.

Title Page

Abstract

Introduction

Conclusions

References

Tables

Figures



Back

Close

Full Screen / Esc

Printer-friendly Version

Interactive Discussion



Numerical models for ground deformation and gravity changes

A. Coco et al.

Title Page

Abstract

Introduction

Conclusions

References

Tables

Figures



Back

Close

Full Screen / Esc

Printer-friendly Version

Interactive Discussion



times $t = 3$ and $t = 100$ years. Reducing the rigidity values (i.e. increasing s_1), the deformation increases for the simulations at $t = 3$ years and decreases for $t = 100$ years. At $t = 3$ years the deformation is mainly driven by pore pressure changes (Figs. 8 and 10) close to injection points (therefore at a depth of ~ 1.5 km), while at $t = 100$ years deformation is mainly driven by temperature changes, which constitute a shallow source of deformation (thermal effects reach the surface at $t = 100$ years, see Fig. 5). In the latter case, the region where the rigidity is reduced (fault core and damage zones) is below the source of deformation, causing less uplift than that observed for the baseline simulation. After $t = 3$ years sensitivity of deformation to fault rigidity is greater for Fault B than for Fault A, whilst the reverse is true at $t = 100$ years. Changes in deformation at the centre of the domain are minimal throughout all simulations, showing the limited lateral influence of the mechanical properties at the faults.

4.4 Gravity changes

The solution of Eq. (7) is the gravity change $\Delta g = g - g_0$, where g_0 and g are the gravity distributions observed at the initial condition and at a fixed time of unrest, respectively. Evaluating Δg at a particular point of the surface ($r, z = 0$) means that also g and g_0 refer to the same geometric location ($r, z = 0$). Gravity change measured in the field $\Delta g = \tilde{g} - g_0$ is actually influenced by ground deformation, since \tilde{g} is measured at the same material point of g_0 , but at a different geometric (translated) point ($r, z = 0$) + $\mathbf{u}(r, z = 0)$, which takes into account the absolute movement of the gravimetry associated with the ground displacement. The value $\Delta g = g - g_0$ is often referred in literature as residual gravity (Bonafede and Mazzanti, 1998; Fernández et al., 2005; Gottsmann et al., 2006a), since it does not include the gravity change associated with the ground deformation (Telford and Sheriff, 1990).

Gravity changes computed at the centre of the model ($r = 0, z = 0$) for different injection rates (Table 4) are reported in Fig. 12. After a transient increase (maximum $16.1 \mu\text{Gal}$ for the UNREST $\times 1$ model) over the first years of unrest (Fig. 12a), gravity changes become negative and decrease monotonically towards a steady state value,

although this is not reached within 100 years (Fig. 12b). The modulus of the gravity changes is more pronounced for higher injection rates, with a maximum increase after 0.5 years of $33.9 \mu\text{Gal}$ for the UNREST $\times 3$ model and a much larger negative value. The behavior is, however, nonlinear at a fixed time with respect to injection rates, due to both the change of molar ratio from the steady state to the unrest phase and the non-linearity of the hydrothermal model. The increase in injection rate causes only a minor increase in the time needed to change sign (from positive to negative, Fig. 12a).

Figure 13 compares the gravity changes computed at the surface for different simulation times and three injection scenarios (D–I) and the associated vertical gravity gradient (A–C), computed as $\Delta g/\nu$, where ν is the vertical deformation computed in Sect. 4.3. Again, this is usually referred as the residual gravity gradient, since it does not take into account the free-air correction (Gottsmann et al., 2006a). Data are plotted for up to 20 years of unrest, since after a long period of unrest the gravity gradient becomes unstable in most of the domain due to very small vertical deformation far from the faults and central conduit. Maximum values in modulus are observed at a radial distance of ~ 570 m at the boundary of the two phase plume, and are almost equal for the three scenarios. However, local maxima of the modulus of the signals are present at the faults for Scenarios II and III. The absolute value is significantly higher for Scenario III, reflecting the higher mass flux.

The sign of the vertical gravity gradient is the same as that of the gravity changes, since the sign of ground deformation is almost always positive (i.e., uplift) in all the simulations. The pattern observed close to the axis of symmetry is similar to that for the gravity changes, presenting a local extreme at the border of the plume. In Scenarios II and III, the gravity gradient presents local extremes on the faults (most evident for $t > 10$ years) because of local extremes in both gravity changes and vertical deformation (see the Appendix). In Scenario II the local extreme on Fault A is a minimum, since the wavelength of the gravity change profile on Fault A is lower than that of the vertical displacement, after a proper normalization (see Appendix for more details). Local extreme on Fault B is a maximum, since Δg has a greater wavelength than ν (see,

SED

7, 2055–2107, 2015

Numerical models for ground deformation and gravity changes

A. Coco et al.

Title Page

Abstract

Introduction

Conclusions

References

Tables

Figures

⏪

⏩

◀

▶

Back

Close

Full Screen / Esc

Printer-friendly Version

Interactive Discussion



for instance, the Δg and v profiles at $t = 20$ years in Fig. 13h). In Scenario III both extremes are minima, since the wavelength of the gravity change profile on the faults is lower than that of the vertical displacement, after a proper normalization (see Appendix for more details). Value observed at the faults is much greater (due to greater gravity changes associated to greater injection rates).

5 Discussion

Heterogeneities in hydrological and mechanical properties as well as the presence of faults within caldera forming volcanoes in the model substantially affect the hydrothermal circulation of hot fluids and the consequent variation in geophysical signals. Models of the CFc suggest that the higher permeability of a central conduit at La Solfara favors the uprising of hot fluids from the deep portion of the reservoir to the surface. Steady-state simulations show formation of a two-phase plume (Chiodini et al., 2003; Rinaldi et al., 2010; Todesco et al., 2010), with radius and gas composition that depend on the permeability structure of the caldera fill (Todesco et al., 2010). According to our simulations the two phase plume occupies the entire central conduit and part of the transition zone, leading to a 300 m radius plume at 1.5 km depth. The radius of the plume reaches 500 m at the surface. Two gas regions form at the edges of the plume: one surrounding the injection point and a shallower region which extends to the surface, simulating the gas discharging observed during the fumarolic activities at La Solfatara. The transition zone of intermediate hydrological properties favours pressurization of the system during the first three years of the unrest and then allows depressurization as injected fluids ascend and discharge at the surface (Fig. 5).

This behavior is reflected by the fast initial vertical deformation at the center of the domain, which is followed first by a rapid and then by a slower subsidence period (Fig. 8). This pattern would not be observed if the permeability contrast between the central conduit and the rest of the domain was stronger. The close relationship between deformation and fluid flow is highlighted in this simulation. If we lower the permeability

Numerical models for ground deformation and gravity changes

A. Coco et al.

Title Page

Abstract

Introduction

Conclusions

References

Tables

Figures



Back

Close

Full Screen / Esc

Printer-friendly Version

Interactive Discussion



of the caldera fill, subsidence after uplift does not occur. In fact lower permeability caldera fill would inhibit the recharge of cold water to the base of the domain and the plume would be confined to a considerably narrower area, resulting in a hotter gas saturated region, as shown in Todesco et al. (2010). Pressure release after the initial

uplifting would not be present and the following period of subsidence would not be observed. Usually deformation observed at the center of the model and associated with a central source located at the axis of symmetry is amplified by the mechanical heterogeneities of lateral fault zones (Folch and Gottsmann, 2006). This behavior is not observed in the simulations of this paper, due to the small ratio between the central source depth (injection depth of 1.5 km) and radial distance of the closest fault (~ 3 km), although in Scenario III the higher injection rate at the base of the faults gives a small amplification of deformation.

Rock expansion due to heat conduction is slower than that due to changes in pore pressure. Temperature changes are confined to the areas surrounding the injection points during the first 10 years of the unrest and take more than 50 years to reach the surface. Thermal contribution to the total ground deformation is therefore almost negligible within the first 10 years but becomes dominant after some decades of unrest (Fig. 8). Fournier and Chardot (2012) suggest that the relative contribution of temperature and pore pressure is directly proportional to the injection depth. Rinaldi et al. (2010) modelled the effect of a short unrest period (20 months) of high injection rate, and showed that the pore pressure declines immediately after cessation of fluid injection, while the temperature continues to increase until hot fluids discharge at the surface. Most recently Chiodini et al. (2015) examined the accelerating rate of ground deformation affecting CF between 2005 and 2014, and suggested that the observed deformation pattern requires both an extended period of heating of the rock and short pulses of injection of magmatic fluids into the hydrothermal system.

In our simulations, maximum temperature change is located close to the edge of the plume (Fig. 5). Consequently, the maximum uplift observed at $t = 100$ years is slightly

SED

7, 2055–2107, 2015

Numerical models for ground deformation and gravity changes

A. Coco et al.

Title Page

Abstract

Introduction

Conclusions

References

Tables

Figures

◀

▶

◀

▶

Back

Close

Full Screen / Esc

Printer-friendly Version

Interactive Discussion



displaced from the center. The shape of this temperature change is elongated in the vertical direction, resembling a prolate source, and causes the rapid decay of the vertical deformation. The same behavior is observed for the gravity changes at the center of the domain. Density changes are localized at the boundary of the plume, where replacement of water by gas over an increasingly large area occurs and gravity changes present a local extreme. Gas saturation changes are small during the first years of unrest and restricted to an area close to the injection point (Fig. 5). As a consequence, gravity changes take about 2 years to exceed $50 \mu\text{Gal}$ in absolute value (for the UNREST $\times 1$ case). Indeed, the initial period of the unrest is characterized by an increase in density, since a substantial amount of water is rapidly introduced to regions with positive gas saturation, following the increase in injection relative to the background rate. This perturbation is amplified for UNREST $\times 2$ and $\times 3$ models since a larger mass of water is injected, as inferred by the positive sign of gravity changes at the beginning of the unrest in Fig. 12. After a transient period this pattern is inverted, since the higher molar ratio of $\text{CO}_2/\text{H}_2\text{O}$ of the fluid injected during unrest pushes the system toward a steady-state solution in which a substantial amount of gas will replace fluid-saturated regions, causing a negative change in density and consequently in gravity changes. In contrast, gravity changes over the fault zones are negative for the whole simulation time, since the base of the faults are liquid saturated at the beginning of the unrest (no background injection is performed at the base of the faults).

The inclusion of faults in the model fundamentally alters the dynamics of fluid flow and heat transfer within the shallow hydrothermal system. Jasim et al. (2015) show that the permeability contrast between the fault zone and surrounding rock affects local temperature gradients, causing faults to act as preferential pathways for either recharge or discharge of groundwater, depending both on fault/matrix permeability ratio and on the vertical extension of the fault. Temperature changes are more pronounced around the faults than at the central conduit, since the background hydrothermal circulation in the fault zones is not driven by any fluid injection, locally enhancing the contrast between

SED

7, 2055–2107, 2015

Numerical models for ground deformation and gravity changes

A. Coco et al.

Title Page

Abstract

Introduction

Conclusions

References

Tables

Figures



Back

Close

Full Screen / Esc

Printer-friendly Version

Interactive Discussion



Numerical models for ground deformation and gravity changes

A. Coco et al.

Title Page

Abstract

Introduction

Conclusions

References

Tables

Figures



Back

Close

Full Screen / Esc

Printer-friendly Version

Interactive Discussion



the steady-state and unrest simulations. Gravity change and deformation associated with thermal effects are thus larger on the faults than close to the axis of symmetry.

Fault mechanical properties strongly influence the deformation profile. In particular, a lower rigidity for the fault core and damage zones is associated with increased uplift on the fault where the source of deformation is deep (as in the case of pore pressure change during the first years of unrest, mainly localized around injection points) but with reduced uplift where the source of deformation is adjacent to the surface (as in the case of temperature changes after a long period of unrest). There is only minor perturbation of uplift observed at the center of the domain showing that mechanical properties of faults have a limited lateral influence. Such influence would be amplified if a deeper domain was considered Folch and Gottsmann (2006).

Fault geometry (inclination, vertical extension, penetration depth, radial distance, etc.) also influences the amplitude and pattern of deformation and gravity changes. Profiles of vertical deformation vary smoothly on Fault A, while a sharper contrast is present at the Fault B, likely because Fault B extends up to the surface $z = 0$. This sharp behavior is mainly associated with the mechanical heterogeneities of fault core and damage zones rather than with hydrological causes (it would not be observed if the mechanical heterogeneities do not reach the surface).

It is important to consider limitations of the approach adopted in this paper. First, the shallow fluid injection (only 1.5 km deep) is constrained by the range allowed by TOUGH2 (which does not account for supercritical fluids), while several studies at CF have speculated that there is a deeper source, between 2.7 and 5 km (Gottsmann et al., 2006c, a; Amoruso et al., 2014). Afanasyev et al. (2015) recently investigated deep supercritical regions of the hydrothermal system at Campi Flegrei using MU-FITS, a multiphase multicomponent fluid flow in porous media simulator that accounts for high temperature processes (Afanasyev, 2013a, b), more realistic for representing active calderas. In addition, whilst in the absence of detailed subsurface data assuming simple layering of rock properties is appropriate, in reality it is probable that the stratigraphy of the caldera fill will be more complex. Representing the effects of such

Numerical models for ground deformation and gravity changes

A. Coco et al.

Title Page

Abstract

Introduction

Conclusions

References

Tables

Figures



Back

Close

Full Screen / Esc

Printer-friendly Version

Interactive Discussion



heterogeneity, and in particular the strong local contrasts in the vicinity of the faults, is difficult using standard gridding approaches (Geiger and Matthäi, 2014). Small-scale geological heterogeneities observed in nature, usually modelled by geostatistical methods (Journal et al., 1998; Strebelle, 2002), cannot be correctly represented by a coarse cell blocks and identifying appropriate upscaling methods is challenging (Gerritsen and Durlofsky, 2005; King et al., 2006). On the other hand, using an extremely fine grid would radically increase the computational cost, making the model unusable for practical purposes where a number of simulation runs is required, such as optimization and uncertainty reduction (Oliver and Chen, 2011).

The 2-D axi-symmetric representation of ring faults is obviously not able to describe the complex fault network which characterised collapse calderas such as the CFc. For example, circulation along fault planes is a purely three-dimensional phenomenon that cannot be represented by a 2-D model. However, this study provides a first approximation of the influence of fluid flow mechanics around faults on relevant geophysical observations and indicates the importance of this area for future research. Last but not least, the one-way coupling adopted in this paper, although provides a reasonable simplification for short period unrests, is not appropriate for the simulation of prolonged processes, since a significant variation in key hydrological parameters (permeability, porosity) can be induced by a change in stress and strain (Rutqvist, 2011), altering the long term behavior of fluid flow in the porous medium and the consequent evaluation of geophysical signals.

6 Conclusions

The model proposed in this paper is targeted at evaluating the variations in geophysical parameters associated with the perturbation of the hydrothermal system in an active caldera. A correct evaluation is fundamental to discriminate between magmatic and hydrothermal unrest. Although the model can refer to a generic system, parameters have been chosen on the basis of the CFc, to simulate the qualitative behavior of

Numerical models for ground deformation and gravity changes

A. Coco et al.

Title Page

Abstract

Introduction

Conclusions

References

Tables

Figures



Back

Close

Full Screen / Esc

Printer-friendly Version

Interactive Discussion



the periodic mini-uplift episodes that occurred after the main crises of 1969–1972 and 1982–1984 and during the recent unrest activity 2005–2014. This periodic behavior can be explained by a series of brief injections of hot fluids into the hydrothermal system (Chiodini et al., 2003, 2015; Todesco et al., 2010) or after a long thermal process following an increase in rock heating, as highlighted by Chiodini et al. (2015) by the analysis of experimental data. Similarly, Jasim et al. (2015) show that periodic behavior of gas composition can be associated with sharp increase of the heat flux, with periodicity comparable to the decennial cycle observed at CFc.

Simulations performed in this paper evaluate the ground deformation and gravity changes caused by a long period of unrest associated with a prolonged injection of fluid of magmatic origin into the shallow hydrothermal system at a higher rate compared to that of the background simulation. To better represent the CF system, we considered the effects of heterogeneities in the vertical and lateral distribution of hydrological and mechanical parameters and the effect of faults. Permeability contrasts considerably affect the fluid flow pattern (Todesco et al., 2010; Jasim et al., 2015) and consequently ground deformation and gravity changes at the surface. Investigation of different scenarios shows that the qualitative and quantitative perturbations of the fluid dynamics are sensitive to fluid injection rates, whose correct evaluation is one of the key challenges to improve the understanding of the system.

We considered the effect of simple lateral and vertical contrasts in hydrological and mechanical properties, and in particular the effect of major high angle permeable and mechanically weak faults. The presence of the ring faults formed as a consequence of the episodes of collapse can significantly alter the behavior of the system. Higher permeability parallel to the plane of the fault favours convection and upward discharge of hot fluids from depth, perturbing the hydrothermal system by changing pore pressure, temperature and fluid density, dependent on injection rate (compare Scenarios II and III). These perturbations, together with weaker mechanical properties of fault core and damage zones, alter geophysical signals (ground deformation, gravity changes) at the surface close to the faults and, in Scenario III, also at the centre of the model.

**Numerical models for
ground deformation
and gravity changes**

A. Coco et al.

Title Page

Abstract

Introduction

Conclusions

References

Tables

Figures



Back

Close

Full Screen / Esc

Printer-friendly Version

Interactive Discussion



Peaks in gravity changes close to the fault areas are in agreement with observed data at CF. Gottsmann et al. (2006a) invert observed gravity changes at CF during a long period (1982–2000) that includes the initial crisis and the following rapid and slow deflations (Gottsmann et al., 2003), supporting a source multiplicity hypothesis during the unrest. This suggests a central source at a depth of 2700 m and shallower sources at the topographical boundary of the calderas, so that the higher gravity gradients observed during slow deflation could be induced by mass/density changes along the caldera ring faults. However, the results presented in this paper differ from the observations of Gottsmann et al. (2006c), where high gravity gradients detected at the periphery of the calderas during slow deflation are not accompanied by significant ground deformation. This phenomenon can be explained by multiple but short-lived injections, alternating with injection at lower (background) rate (Rinaldi et al., 2010; Todesco et al., 2010; Chiodini et al., 2015), and this investigation is part of our ongoing simulation effort.

A more realistic scenario would include deeper injection of hot fluids, accounting for supercritical conditions at higher temperature and pressure, with a fully coupled simulator, taking into account the feedbacks between ground deformation and rock permeability and porosity, which may significantly influence the fluid flow pattern over more extended periods of simulation (e.g., Rutqvist, 2011, and references therein). Also, a 3-D model with realistic topography and fault geometries is necessary for the effects of convection along the fault planes to be considered, together with the role of fault intersections. 3-D simulations with detailed location of faults and topography demand a tremendous increasing in computing resources. Highly efficient numerical methods and appropriate (adaptive) grids in a parallel computing framework are therefore required to reduce the computational effort arising from these large scale problems in order to improve the understanding of caldera systems.

Appendix: Gravity gradient extremes (maximum and minimum) on the faults associated to wavelength of gravity changes Δg and vertical deformation v

The (residual) gravity gradient is computed as $\frac{\Delta g}{v}$, where Δg is the (residual) gravity change and v is the vertical displacement. In the simulations performed in this paper, we observe that on the faults ($r = 3$ km and $r = 6.5$ km) we have

$$\Delta g < 0, v > 0, \frac{d}{dr}\Delta g \approx 0, \frac{d}{dr}v \approx 0, \frac{d^2}{dr^2}\Delta g > 0, \frac{d^2}{dr^2}v < 0.$$

After some calculus we obtain

$$\frac{d}{dr} \left(\frac{\Delta g}{v} \right) = \frac{v \frac{d}{dr}\Delta g - \Delta g \frac{d}{dr}v}{v^2} \approx 0, \quad \frac{d^2}{dr^2} \left(\frac{\Delta g}{v} \right) \approx \frac{v \frac{d^2}{dr^2}\Delta g - \Delta g \frac{d^2}{dr^2}v}{g^2},$$

$$\frac{d^2}{dr^2} \left(\frac{\Delta g}{v} \right) > 0 \iff \frac{\frac{d^2}{dr^2}\Delta g}{\frac{d^2}{dr^2}v} < \frac{\Delta g}{v}.$$

Therefore, after rescaling Δg (or v) in such a way $|\Delta g| = |v|$, we can assert that

$$\frac{d^2}{dr^2} \left(\frac{\Delta g}{v} \right) > 0 \iff \left| \frac{d^2}{dr^2}\Delta g \right| > \left| \frac{d^2}{dr^2}v \right|.$$

In conclusion, the gravity gradient profile has a local minimum (maximum) when the curvature of Δg is greater (lower) than the curvature of v (after a proper rescaling in which $|\Delta g| = |v|$). Since the curvature is inversely proportional to the wavelength, we can reformulate the statement as follows: the gravity gradient profile has a local minimum (maximum) when the wavelength of Δg is lower (greater) than the wavelength of v .

Acknowledgements. The authors thank Brioch Hemmings and Antonio Pio Rinaldi for the fruitful discussions and comments that helped to improve the manuscript. This work has been funded by the EC-FP7 VUELCO (#282759) and MEDSUV (#308665) projects.

Numerical models for ground deformation and gravity changes

A. Coco et al.

Title Page

Abstract

Introduction

Conclusions

References

Tables

Figures



Back

Close

Full Screen / Esc

Printer-friendly Version

Interactive Discussion



References

- Afanasyev, A.: Application of the reservoir simulator MUFITS for 3-D modelling of CO₂ storage in geological formations, *Energy Procedia*, 40, 365–374, 2013a. 2079
- Afanasyev, A.: Multiphase compositional modelling of CO₂ injection under subcritical conditions: the impact of dissolution and phase transitions between liquid and gaseous CO₂ on reservoir temperature, *Int. J. Greenh. Gas Con.*, 19, 731–742, 2013b. 2079
- Afanasyev, A., Costa, A., and Chiodini, G.: Investigation of hydrothermal activity at Campi Flegrei caldera using 3-D numerical simulations: extension to high temperature processes, *J. Volcanol. Geoth. Res.*, 299, 68–77, 2015. 2079
- Aiuppa, A., Tamburello, G., Di Napoli, R., Cardellini, C., Chiodini, G., Giudice, G., Grassa, F., and Pedone, M.: First observations of the fumarolic gas output from a restless caldera: implications for the current period of unrest (2005–2013) at Campi Flegrei, *Geochem. Geophys. Geosy.*, 14, 4153–4169, doi:10.1002/ggge.20261, 2013. 2058
- Allard, P., Maiorani, A., Tedesco, D., Cortecchi, G., and Turi, B.: Isotopic study of the origin of sulfur and carbon in Solfatara fumaroles, Campi Flegrei caldera, *J. Volcanol. Geoth. Res.*, 48, 139–159, 1991. 2058
- Amoruso, A., Crescentini, L., Sabbetta, I., Martino, P. D., Obrizzo, F., and Tammaro, U.: Clues to the cause of the 2011–2013 Campi Flegrei caldera unrest, Italy, from continuous GPS data, *Geophys. Res. Lett.*, 41, 3081–3088, doi:10.1002/2014GL059539, 2014. 2059, 2079
- Anderson, E. M.: IX. – The dynamics of the formation of cone-sheets, ring-dykes, and caldron-subsidences, *P. Roy. Soc. Edinb. A*, 56, 128–157, 1937. 2057
- Arnaldsson, A., Berthet, J.-C., Kjaran, S., and Sigurðsson, S.: Numerical scheme to simulate flow through an isotropic rocks in TOUGH2, *Comput. Geosci.*, 65, 37–45, doi:10.1016/j.cageo.2013.08.002, 2014. 2062
- Aster, R. and Meyer, R.: Three-dimensional velocity structure and hypocenter distribution in the Campi Flegrei caldera, Italy, *Tectonophysics*, 149, 195–218, 1988. 2073
- Beauducel, F. and De Natale, G., O. F. P. F.: 3-D modelling of Campi Flegrei ground deformations: role of caldera boundary discontinuities, *Pure Appl. Geophys.*, 161, 1329–1344, 2004. 2059, 2060
- Berrino, G., Corrado, G., Luongo, G., and Toro, B.: Ground deformation and gravity changes accompanying the 1982 Pozzuoli uplift, *B. Volcanol.*, 47, 188–200, 1984. 2058

Numerical models for ground deformation and gravity changes

A. Coco et al.

Title Page

Abstract

Introduction

Conclusions

References

Tables

Figures



Back

Close

Full Screen / Esc

Printer-friendly Version

Interactive Discussion



Numerical models for ground deformation and gravity changes

A. Coco et al.

Title Page

Abstract

Introduction

Conclusions

References

Tables

Figures



Back

Close

Full Screen / Esc

Printer-friendly Version

Interactive Discussion



- Bianchi, R., Coradini, A., Federico, C., Giberti, G., Lanciano, P., Pozzi, J., Sartoris, G., and Scandone, R.: Modeling of surface deformation in volcanic areas: the 1970–1972 and 1982–1984 crises of Campi Flegrei, Italy, *J. Geophys. Res.*, 92, 14139–14150, 1987. 2057
- Bonafede, M. and Mazzanti, M.: Modelling gravity variations consistent with ground deformation in the Campi Flegrei caldera (Italy), *J. Volcanol. Geoth. Res.*, 81, 137–157, 1998. 2074
- Bonafede, M., Dragoni, M., and Quarenì, F.: Displacement and stress fields produced by a centre of dilatation and by a pressure source in a viscoelastic half-space: application to the study of ground deformation and seismic activity at Campi Flegrei, Italy, *Geophys. J. Roy. Astr. S.*, 87, 455–485, 1986. 2057
- Brocher, T. M.: Empirical relations between elastic wavespeeds and density in the Earth's crust, *B. Seismol. Soc. Am.*, 95, 2081–2092, 2005. 2065
- Casertano, L.: Hydrodynamics and geodynamics in the Phlegraean Fields area of Italy, *Nature*, 264, 161–164, 1976. 2057
- Chiodini, G., Frondini, F., Cardellini, C., Granieri, D., Marini, L., and Ventura, G.: CO₂ degassing and energy release at Solfatara volcano, Campi Flegrei, Italy, *J. Geophys. Res.*, 106, 16213–16221, 2001. 2058
- Chiodini, G., Todesco, M., Caliro, S., Gaudio, C. D., Macedonio, G., and Russo, M.: Magma degassing as a trigger of bradyseismic events: the case of Phlegraean Fields (Italy), *Geophys. Res. Lett.*, 30, 1434, doi:10.1029/2002GL016790, 2003. 2067, 2068, 2076, 2081
- Chiodini, G., Vilardo, G., Augusti, V., Granieri, D., Caliro, S., Minopoli, C., and Terranova, C.: Thermal monitoring of hydrothermal activity by permanent infrared automatic stations: results obtained at Solfatara di Pozzuoli, Campi Flegrei (Italy), *J. Geophys. Res.*, 112, B12206, doi:10.1029/2007JB005140, 2007. 2057
- Chiodini, G., Vandemeulebrouck, J., Caliro, S., D'Auria, L., Martino, P. D., Mangiacapra, A., and Petrillo, Z.: Evidence of thermal-driven processes triggering the 2005–2014 unrest at Campi Flegrei caldera, *Earth Planet. Sc. Lett.*, 414, 58–67, doi:10.1016/j.epsl.2015.01.012, 2015. 2077, 2081, 2082
- Coco, A. and Russo, G.: Finite-difference ghost-point multigrid methods on cartesian grids for elliptic problems in arbitrary domains, *J. Comput. Phys.*, 241, 464–501, 2013. 2066
- Coco, A., Currenti, G., Negro, C. D., and Russo, G.: A second order finite-difference ghost-point method for elasticity problems on unbounded domains with applications to volcanology, *Commun. Comput. Phys.*, 16, 983–1009, doi:10.4208/cicp.210713.010414a, 2014. 2065, 2066

Numerical models for ground deformation and gravity changes

A. Coco et al.

Title Page

Abstract

Introduction

Conclusions

References

Tables

Figures



Back

Close

Full Screen / Esc

Printer-friendly Version

Interactive Discussion



- Currenti, G.: Numerical evidences enabling to reconcile gravity and height changes in volcanic areas, *Geophys. J. Int.*, 197, 164–173, doi:10.1093/gji/ggt507, 2014. 2066
- De Martino, P., Tammaro, U., and Obrizzo, F.: GPS time series at Campi Flegrei caldera (2000–2013), *Ann. Geophys.*, 57, S0213, doi:10.4401/ag-6431, 2014. 2058
- 5 De Natale, G. and Pingue, F.: Ground deformations in collapsed caldera structures, *J. Volcanol. Geoth. Res.*, 57, 19–38, 1993. 2059, 2060
- De Natale, G., Pingue, F., Allard, P., and Zollo, A.: Geophysical and geochemical modelling of the 1982–1984 unrest phenomena at Campi Flegrei caldera (southern Italy), *J. Volcanol. Geoth. Res.*, 48, 199–222, 1991. 2057, 2058
- 10 De Natale, G., Petrazzuoli, S., and Pingue, F.: The effect of collapse structures on ground deformation in calderas, *Geophys. Res. Lett.*, 24, 1555–1558, 1997. 2059
- De Siena, L., Del Pezzo, E., and Bianco, F.: Seismic attenuation imaging of Campi Flegrei: evidence of gas reservoirs, hydrothermal basins, and feeding systems, *J. Geophys. Res.-Sol. Ea.*, 115, B09312, doi:10.1029/2009jb006938, 2010. 2062, 2096
- 15 Deino, A., Orsi, G., de Vita, S., and Piochi, M.: The age of the Neapolitan Yellow Tuff caldera-forming eruption (Campi Flegrei caldera – Italy) assessed by $^{40}\text{Ar}/^{39}\text{Ar}$ dating method, *J. Volcanol. Geoth. Res.*, 133, 157–170, 2004. 2058
- Di Vito, M., Isaia, R., Orsi, G., Southon, J., De Vita, S., d'Antonio, M., Pappalardo, L., and Piochi, M.: Volcanism and deformation since 12,000 years at the Campi Flegrei caldera (Italy), *J. Volcanol. Geoth. Res.*, 91, 221–246, 1999. 2058
- 20 Fazio, R. and Jannelli, A.: Finite difference schemes on quasi-uniform grids for BVPs on infinite intervals, *J. Comput. Appl. Math.*, 269, 14–23, 2014. 2064
- Fernández, J., Tiampo, K. F., Rundle, J. B., and Jentzsch, G.: On the interpretation of vertical gravity gradients produced by magmatic intrusions, *J. Geodyn.*, 39, 475–492, 2005. 2074
- 25 Folch, A. and Gottsmann, J.: Faults and ground uplift at active calderas, Geological Society, London, Special Publications, 269, 109–120, 2006. 2059, 2077, 2079
- Fournier, N. and Chardot, L.: Understanding volcano hydrothermal unrest from geodetic observations: insights from numerical modelling and application to White Island volcano, New Zealand, *J. Geophys. Res.*, 117, B11208, doi:10.1029/2012JB009469, 2012. 2077
- 30 Fung, Y.: *Foundations of Solid Mechanics*, Prentice-Hall, Englewood Cliffs, 1965. 2063
- Geiger, S. and Matthäi, S.: What can we learn from high-resolution numerical simulations of single-and multi-phase fluid flow in fractured outcrop analogues?, Geological Society, London, Special Publications, 374, 125–144, 2014. 2080

Numerical models for ground deformation and gravity changes

A. Coco et al.

Title Page

Abstract

Introduction

Conclusions

References

Tables

Figures



Back

Close

Full Screen / Esc

Printer-friendly Version

Interactive Discussion



- Gercek, H.: Poisson's ratio values for rocks, *Int. J. Rock Mech. Min.* 44, 1–13, doi:10.1016/j.ijrmms.2006.04.011, 2007. 2065
- Gerritsen, M. G. and Durlafsky, L. J.: Modeling fluid flow in oil reservoirs, *Annu. Rev. Fluid Mech.*, 37, 211–238, 2005. 2080
- 5 Gottsmann, J., Berrino, G., Rymer, H., and Williams-Jones, G.: Hazard assessment during caldera unrest at the Campi Flegrei, Italy: a contribution from gravity-height gradients, *Earth Planet. Sc. Lett.*, 211, 295–309, doi:10.1016/S0012-821X(03)00225-5, 2003. 2057, 2058, 2082
- Gottsmann, J., Camacho, A. G., Tiampo, K. F., and Fernández, J.: Spatiotemporal variations in vertical gravity gradients at the Campi Flegrei caldera (Italy): a case for source multiplicity during unrest?, *Geophys. J. Int.*, 167, 1089–1096, doi:10.1111/j.1365-246x.2006.03157.x, 10 2006a. 2057, 2058, 2059, 2074, 2075, 2079, 2082
- Gottsmann, J., Folch, A., and Rymer, H.: Unrest at Campi Flegrei: a contribution to the magmatic versus hydrothermal debate from inverse and finite element modeling, *J. Geophys. Res.*, 111, B07203, doi:10.1029/2005JB003745, 2006b. 2057
- Gottsmann, J., Rymer, H., and Berrino, G.: Unrest at the Campi Flegrei caldera (Italy): a critical evaluation of source parameters from geodetic data inversion, *J. Volcanol. Geoth. Res.*, 150, 132–145, doi:10.1016/j.jvolgeores.2005.07.002, 2006c. 2059, 2079, 2082
- Grosch, C. E. and Orszag, S. A.: Numerical solution of problems in unbounded regions: coordinate transforms, *J. Comput. Phys.*, 25, 273–295, 1977. 2064
- 10 Hurwitz, S., Christiansen, L. B., and Hsieh, P. A.: Hydrothermal fluid flow and deformation in large calderas: inferences from numerical simulations, *J. Geophys. Res.*, 112, B02206, doi:10.1029/2006JB004689, 2007. 2057, 2070
- Hutnak, M., Hurwitz, S., Ingebritsen, S. E., and Hsieh, P. A.: Numerical models of caldera deformation: effects of multiphase and multicomponent hydrothermal fluid flow, *J. Geophys. Res.*, 114, B04411, doi:10.1029/2008JB006151, 2009. 2057, 2070
- 25 Ingebritsen, S. E., Geiger, S., Hurwitz, S., and Driesner, T.: Numerical simulation of magmatic hydrothermal systems, *Rev. Geophys.*, 48, RG1002, doi:10.1029/2009RG000287, 2010. 2057
- Jasim, A., Whitaker, F., and Rust, A.: Impact of channelized flow on temperature distribution and fluid flow in restless volcanoes: insight from Campi Flegrei Caldera, Italy, *J. Volcanol. Geoth. Res.*, in revision, 2015. 2059, 2060, 2062, 2063, 2068, 2078, 2081
- 30

Numerical models for ground deformation and gravity changes

A. Coco et al.

Title Page

Abstract

Introduction

Conclusions

References

Tables

Figures



Back

Close

Full Screen / Esc

Printer-friendly Version

Interactive Discussion



- Journel, A., Gunderso, R., Gringarten, E., and Yao, T.: Stochastic modelling of a fluvial reservoir: a comparative review of algorithms, *J. Petrol. Sci. Eng.*, 21, 95–121, 1998. 2080
- King, M. J., Burn, K. S., Wang, P., Muralidharan, V., Alvarado, F. E., Ma, X., Datta-Gupta, A.: Optimal coarsening of 3-D reservoir models for flow simulation, *SPE Reserv. Eval. Eng.*, 9, 317–334, 2006. 2080
- Mavko, G., Mukerji, T., and Dvorkin, J.: *The Rock Physics Handbook: Tools for Seismic Analysis of Porous Media*, Cambridge University Press, Cambridge, UK, 2009. 2065
- McTigue, D.: Thermoelastic response of fluid-saturated porous rock, *J. Geophys. Res.*, 91, 9533–9542, 1986. 2063
- Mogi, K.: Relations between the eruptions of various volcanoes and the deformations of the ground surfaces around them, *B. Earthq. Res. I. Tokyo*, 36, 99–134, 1958. 2057, 2071, 2072
- Neuzil, C.: Hydromechanical coupling in geologic processes, *Hydrogeol. J.*, 11, 41–83, 2003. 2071
- Oliver, D. S. and Chen, Y.: Recent progress on reservoir history matching: a review, *Computat. Geosci.*, 15, 185–221, 2011. 2080
- Orsi, G., Vita, S. D., and di Vito, M.: The restless, resurgent Campi Flegrei nested caldera (Italy): constraints on its evolution and configuration, *J. Volcanol. Geoth. Res.*, 74, 179–214, 1996. 2058, 2060, 2061, 2065
- Parascondola, A.: *I fenomeni bradisismici del Serapeo di Pozzuoli*, Genovese, Naples, 1947. 2058
- Piochi, M., Kilburn, C., Di Vito, M., Mormone, A., Tramelli, A., Troise, C., and De Natale, G.: The volcanic and geothermally active Campi Flegrei caldera: an integrated multidisciplinary image of its buried structure, *Int. J. Earth Sci.*, 103, 401–421, doi:10.1007/s00531-013-0972-7, 2014. 2062, 2065, 2096
- Pruess, K., Oldenburg, C., and Moridis, G.: *TOUGH2 User's Guide, Version 2.0*, Lawrence Berkeley Natl. Lab., Berkeley, CA, USA, 1999. 2060
- Rice, J. R. and Cleary, M. P.: Some basic stress diffusion solutions for fluid-saturated elastic porous media with compressible constituents, *Rev. Geophys.*, 14, 227–241, 1976. 2063
- Rinaldi, A., Todesco, M., and Bonafede, M.: Hydrothermal instability and ground displacement at the Campi Flegrei caldera, *Phys. Earth Planet. In.*, 178, 155–161, doi:10.1016/j.pepi.2009.09.005, 2010. 2057, 2063, 2065, 2067, 2068, 2070, 2076, 2077, 2082

Numerical models for ground deformation and gravity changes

A. Coco et al.

Title Page

Abstract

Introduction

Conclusions

References

Tables

Figures



Back

Close

Full Screen / Esc

Printer-friendly Version

Interactive Discussion



- Rinaldi, A., Todesco, M., Vandemeulebrouck, J., Revil, A., and Bonafede, M.: Electrical conductivity, ground displacement, gravity changes, and gas flow at Solfatara crater (Campi Flegrei caldera, Italy): results from numerical modeling, *J. Volcanol. Geoth. Res.*, 207, 93–105, doi:10.1016/j.jvolgeores.2011.07.008, 2011. 2057
- 5 Rolandi, G., Bellucci, F., Heizler, M., Belkin, H., and Vivo, D.: Tectonic controls on the genesis of Ignimbrites from the Campanian volcanic zone, southern Italy, *Mineral. Petrol.*, 79, 3–31, 2003. 2058
- Rosi, M. and Sbrana, A.: The Phlegrean Fields, *Quad. Ric. Sci.*, 114, 94–102, 1987. 2060, 2062, 2096
- 10 Rouwet, D., Sandri, L., Marzocchi, W., Gottsmann, J., Selva, J., Tonini, R., and Papale, P.: Recognizing and tracking volcanic hazards related to non-magmatic unrest: a review, *J. Appl. Volcanol.*, 3, 1–17, 2014. 2057
- Rutqvist, J.: Status of the TOUGH-FLAC simulator and recent applications related to coupled fluid flow and crustal deformations, *Comput. Geosci.*, 37, 739–750, doi:10.1016/j.cageo.2010.08.006, 2011. 2071, 2080, 2082
- 15 Strebelle, S.: Conditional simulation of complex geological structures using multiple-point statistics, *Math. Geol.*, 34, 1–21, 2002. 2080
- Telford, W. M. and Sheriff, R. E.: *Applied Geophysics*, vol. 1, Cambridge University Press, Cambridge, UK, 1990. 2074
- 20 Todesco, M. and Berrino, G.: Modeling hydrothermal fluid circulation and gravity signals at the Phlegraean Fields caldera, *Earth Planet. Sc. Lett.*, 240, 328–338, doi:10.1016/j.epsl.2005.09.016, 2005a. 2057, 2058, 2067
- Todesco, M. and Berrino, G.: Modeling hydrothermal fluid circulation and gravity signals at the Phlegraean Fields caldera, *Earth Planet. Sc. Lett.*, 240, 328–338, doi:10.1016/j.epsl.2005.09.016, 2005b. 2057
- 25 Todesco, M., Chiodini, G., and Macedonio, G.: Monitoring and modelling hydrothermal fluid emission at La Solfatara (Phlegrean Fields, Italy). An interdisciplinary approach to the study of diffuse degassing, *J. Volcanol. Geoth. Res.*, 125, 57–79, doi:10.1016/S0377-0273(03)00089-1, 2003. 2057, 2058
- 30 Todesco, M., Rinaldi, A. P., and Bonafede, M.: Modeling of unrest signals in heterogeneous hydrothermal systems, *J. Geophys. Res.*, 115, B09213, doi:10.1029/2010JB007474, 2010. 2057, 2062, 2063, 2065, 2067, 2068, 2070, 2076, 2077, 2081, 2082

Numerical models for ground deformation and gravity changes

A. Coco et al.

Title Page

Abstract

Introduction

Conclusions

References

Tables

Figures



Back

Close

Full Screen / Esc

Printer-friendly Version

Interactive Discussion



Trasatti, E., Giunchi, C., and Bonafede, M.: Structural and rheological constraints on source depth and overpressure estimates at the Campi Flegrei caldera, Italy, *J. Volcanol. Geoth. Res.*, 144, 105–118, doi:10.1016/j.jvolgeores.2004.11.019, 2005. 2073

5 Troiano, A., Di Giuseppe, M., Petrillo, Z., Troise, C., and De Natale, G.: Ground deformation at calderas driven by fluid injection: modelling unrest episodes at Campi Flegrei (Italy), *Geophys. J. Int.*, 187, 833–847, 2011. 2057, 2059

Troise, C., De Natale, G., Pingue, F., Tammara, U., De Martino, P., Obrizzo, F., and Boschi, E.: A new uplift episode at Campi Flegrei Caldera (southern Italy): implications for unrest interpretation and eruption hazard evaluation, in: *Caldera Volcanism: Analysis, Modelling and Response*, *Dev. Volcano.*, 10, 375–392, 2008. 2058, 2060

10 Zollo, A., Maercklin, N., Vassallo, M., Iacono, D. D., Virieux, J., and Gasparini, P.: Seismic reflections reveal a massive melt layer feeding Campi Flegrei caldera, *Geophys. Res. Lett.*, 35, L12306, doi:10.1029/2008GL034242, 2008. 2065

Numerical models for ground deformation and gravity changes

A. Coco et al.

Table 1. Hydrological parameters for the domain of Fig. 2: rock density ρ_r [kg m^{-3}], porosity ϕ , permeability \mathcal{K} [m^2], thermal conductivity λ [$\text{W (m} \cdot \text{K)}^{-1}$], specific heat capacity C_r [$\text{J (kg} \cdot \text{K)}^{-1}$]. Matrix permeability is isotropic, but enhanced in the fault-parallel direction k_ξ by two orders of magnitude in the fault damage zone and by three orders of magnitude in the core of the faults (see Eq. 3). In other respects the fault zones have the same hydrological characteristics as the matrix (see *).

	Rock density	Porosity	Permeability	Thermal conductivity	Specific heat capacity
	ρ_r [kg m^{-3}]	ϕ	\mathcal{K} [m^2]	λ [$\text{W (m} \cdot \text{K)}^{-1}$]	C_r [$\text{J (kg} \cdot \text{K)}^{-1}$]
CENTRAL CONDUIT	1800	0.10	10^{-14}	1.15	900
LAYER 1 – Pyroclastic material	1700	0.35	5×10^{-15}	1.15	900
LAYER 2 – Tuffs and marine deposits	2300	0.15	10^{-15}	1.50	1000
TRANSITION 1	1700	0.15	8×10^{-15}	1.15	900
TRANSITION 2	1700	0.10	5×10^{-15}	1.50	1000
FAULTS – DAMAGE ZONE	*	*	$k_\xi = 5 \times 10^{-13}$	*	*
FAULTS – CORE ZONE	*	*	$k_\xi = 10^{-12}$	*	*

Title Page

Abstract

Introduction

Conclusions

References

Tables

Figures

⏪

⏩

◀

▶

Back

Close

Full Screen / Esc

Printer-friendly Version

Interactive Discussion



Numerical models for ground deformation and gravity changes

A. Coco et al.

Table 2. Mechanical parameters for the domain of Fig. 3: seismic p wave velocity V_p [km s^{-1}], rock density ρ_r [kg m^{-3}], rigidity modulus μ [GPa], poisson ratio ν .

	Seismic p wave velocity V_p [km s^{-1}]	Rock density ρ_r [kg m^{-3}]	Rigidity modulus μ [GPa]	Poisson ratio ν
LAYER 1 – Pyroclastic material	1.60	1700	1.24	0.25
LAYER 2 – Tuffs and marine deposits	3.44	2300	7.79	0.25
LAYER 3 – Thermo-metamorphic rocks	4.78	2490	16.3	0.25
LAYER 4 – Crystalline basement	5.76	2650	25.1	0.25
LAYER 5 – Melt zone	2.80	2180	4.87	0.25
LAYER 6 – Mantle	6.50	2810	33.9	0.25
FAULTS – DAMAGE ZONE	*	*	0.385	0.30
FAULTS – CORE ZONE	*	*	0.0357	0.40

Title Page

Abstract

Introduction

Conclusions

References

Tables

Figures

⏪

⏩

◀

▶

Back

Close

Full Screen / Esc

Printer-friendly Version

Interactive Discussion



Numerical models for ground deformation and gravity changes

A. Coco et al.

Table 3. Different injection values (mass and flux rate) for the central conduit and faults, normalized to the injection of a mass of 1 kg of fluids. Base area of the central conduit is $\pi \cdot 200^2 = 125\,664 \text{ m}^2$, of the Fault A core zone is $2\pi \cdot 3000 \cdot 25 = 471\,239 \text{ m}^2$, of the Fault B core zone is $2\pi \cdot 6500 \cdot 25 = 1\,021\,018 \text{ m}^2$.

	Scenario I	Scenario II	Scenario III
central conduit – mass [kg s^{-1}]	1	1	1
central conduit – flux rate [$\text{kg (m}^2 \cdot \text{s)}^{-1}$]	7.96×10^{-6}	7.96×10^{-6}	7.96×10^{-6}
Fault A – mass [kg s^{-1}]	0	1	3.75
Fault A – flux rate [$\text{kg (m}^2 \cdot \text{s)}^{-1}$]	0	2.12×10^{-6}	7.96×10^{-6}
Fault B – mass [kg s^{-1}]	0	1	8.13
Fault B – flux rate [$\text{kg (m}^2 \cdot \text{s)}^{-1}$]	0	9.79×10^{-7}	7.96×10^{-6}

Title Page

Abstract	Introduction
Conclusions	References
Tables	Figures
⏪	⏩
◀	▶
Back	Close
Full Screen / Esc	
Printer-friendly Version	
Interactive Discussion	



Numerical models for ground deformation and gravity changes

A. Coco et al.

Table 4. Injection rates [t day^{-1}] for different unrest simulations. Molar ratio is 0.17 for the Steady-State simulation and 0.40 for all the UNREST simulations.

	Steady-State	UNREST × 1	UNREST × 0.5	UNREST × 2	UNREST × 3
H ₂ O (t day^{-1})	2400	6100	3050	12 200	18 300
CO ₂ (t day^{-1})	1000	6000	3000	12 000	18 000
molar ratio	0.17	0.40	0.40	0.40	0.40

Title Page

Abstract

Introduction

Conclusions

References

Tables

Figures

⏪

⏩

◀

▶

Back

Close

Full Screen / Esc

Printer-friendly Version

Interactive Discussion



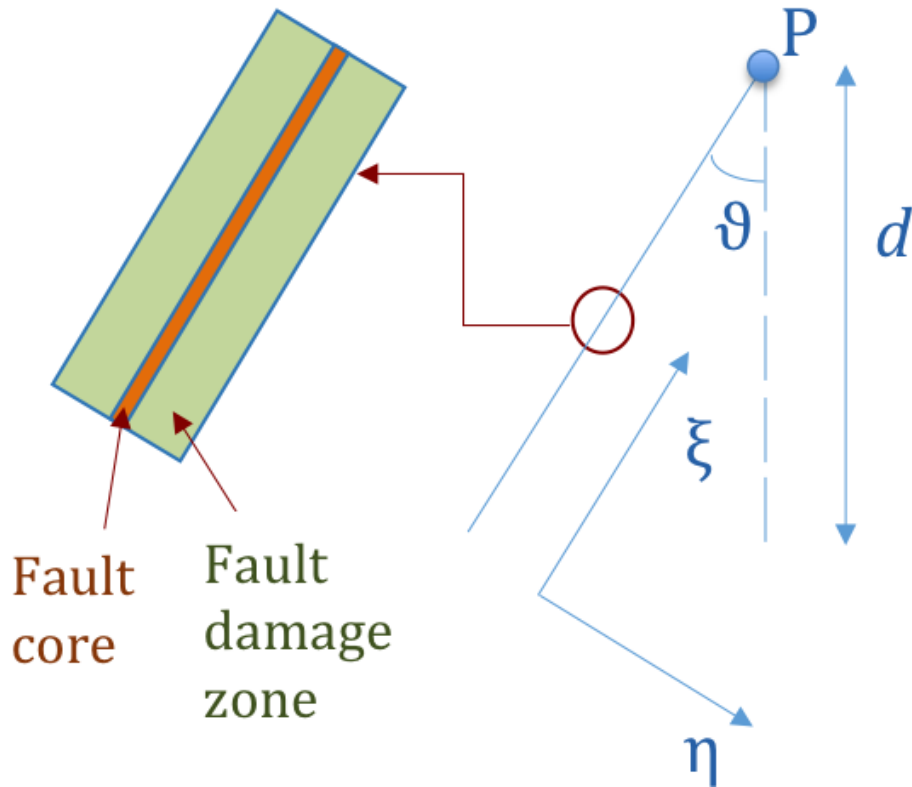


Figure 1. Geometry of a fault. Fault extends from a shallow point P , over a vertical distance d and forms a dip-angle θ with the vertical axis. The fault structure comprises two units: a central narrow core zone surrounded by a wider damage zone. Both units have different hydrological and mechanical parameters to the surrounding rock. A local coordinate system (η, ξ) is used to compute the anisotropic permeability tensor.

Title Page

Abstract

Introduction

Conclusions

References

Tables

Figures

◀

▶

◀

▶

Back

Close

Full Screen / Esc

Printer-friendly Version

Interactive Discussion



Numerical models for ground deformation and gravity changes

A. Coco et al.

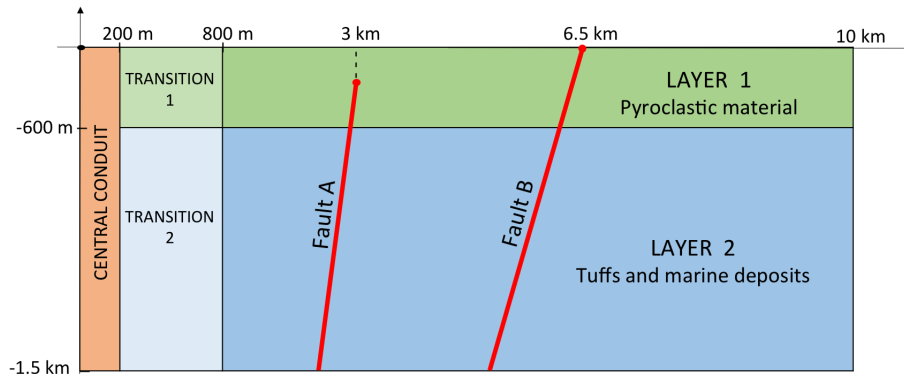


Figure 2. Heterogeneous hydrological domain. Two transition zones are placed between the central conduit and Layers A and B, with intermediate hydrological parameters (Table 1). Atmospheric boundary conditions are fixed on the top (which is open to fluid and heat flow), lateral boundaries are assumed to be impervious and adiabatic, while a heat flux is assigned at the bottom impervious boundary at a rate of 0.195 W m^{-2} to ensure a temperature gradient comparable to that estimated for CFc ($\sim 130^\circ\text{C km}^{-1}$, Rosi and Sbrana, 1987; De Siena et al., 2010; Piochi et al., 2014).

Title Page

Abstract

Introduction

Conclusions

References

Tables

Figures

◀

▶

◀

▶

Back

Close

Full Screen / Esc

Printer-friendly Version

Interactive Discussion



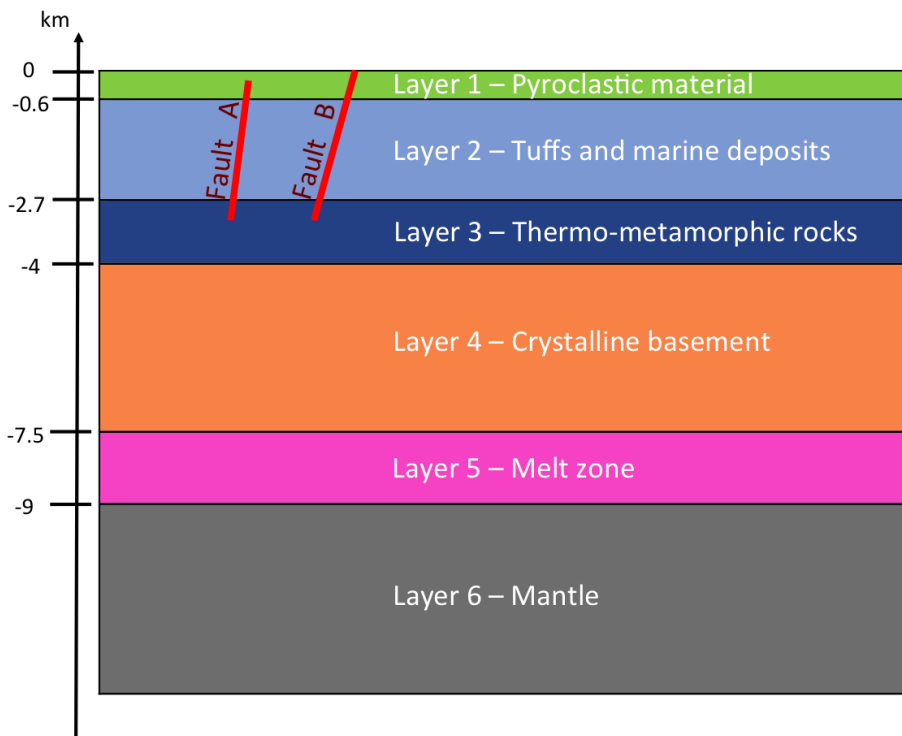


Figure 3. Heterogeneous mechanical domain. Mechanical parameters are reported in Table 1. Inclination and radial placement of faults are not in scale. The domain extends toward infinity in the radial and vertical (downward) directions. Free-stress boundary conditions are ascribed at the top boundary, while vanishing displacements are assigned at infinite distances.

Numerical models for ground deformation and gravity changes

A. Coco et al.

Title Page

Abstract

Introduction

Conclusions

References

Tables

Figures

◀

▶

◀

▶

Back

Close

Full Screen / Esc

Printer-friendly Version

Interactive Discussion



Numerical models for ground deformation and gravity changes

A. Coco et al.

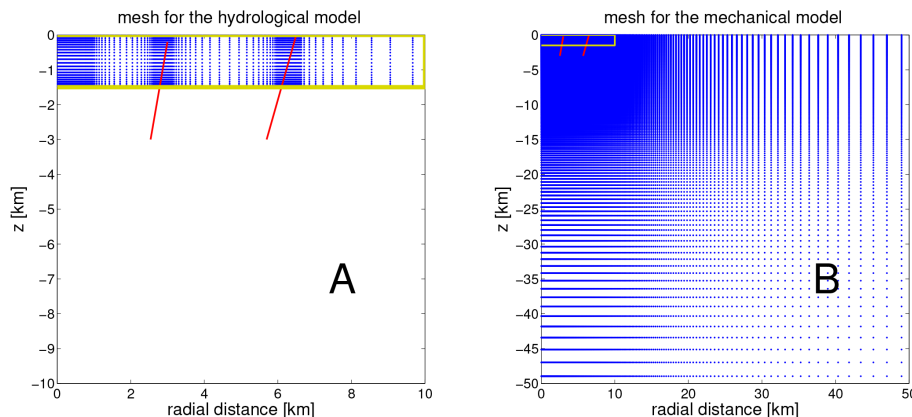


Figure 4. (a) cell centers of the quasi-uniform Cartesian mesh used in TOUGH2 to solve the equations of the hydrological model of Sect. 3.1. It is composed of 5848 cells, spaced on a basis of a composed exponential distribution in such a way the radial spacing is finer adjacent to the central conduit and faults and the vertical spacing is finer around injection points and towards the surface. (b) Exponential distribution for the quasi-uniform Cartesian mesh used for the unbounded domains of the geomechanical model (Eq. 5), composed of 66 049 grid points. The two ring faults are shown in red. Yellow box represents the hydrological domain. The same mesh, but extended toward infinity also in the upward direction, is used for the gravity model (Eq. 7).

Title Page

Abstract

Introduction

Conclusions

References

Tables

Figures

◀

▶

◀

▶

Back

Close

Full Screen / Esc

Printer-friendly Version

Interactive Discussion



Numerical models for ground deformation and gravity changes

A. Coco et al.

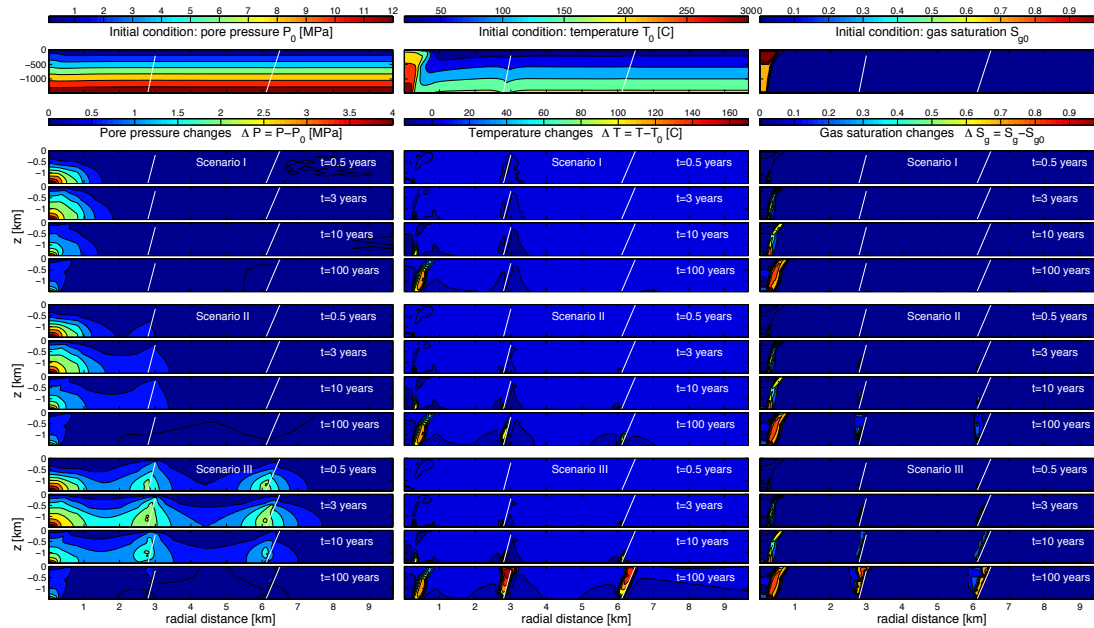


Figure 5. Changes in pore pressure, temperature and gas saturation relative to the steady state initial condition at different times after the initiation of unrest. Initial conditions are obtained as the steady-state solutions of central injection of 2400 t day^{-1} of H_2O and 1000 t day^{-1} of CO_2 , through a cylindrical conduit with radius 200 m. Unrest is simulated by injecting 6100 t day^{-1} of H_2O and 6000 t day^{-1} of CO_2 through the central conduit (UNREST $\times 1$ column of Table 4) and additionally for Scenarios II and III injecting at the base of the core zone of the two faults according to Table 3. Note that color scale of initial conditions is different from the respective color scale of unrest plots.

Title Page

Abstract

Introduction

Conclusions

References

Tables

Figures

⏪

⏩

◀

▶

Back

Close

Full Screen / Esc

Printer-friendly Version

Interactive Discussion



Numerical models for ground deformation and gravity changes

A. Coco et al.

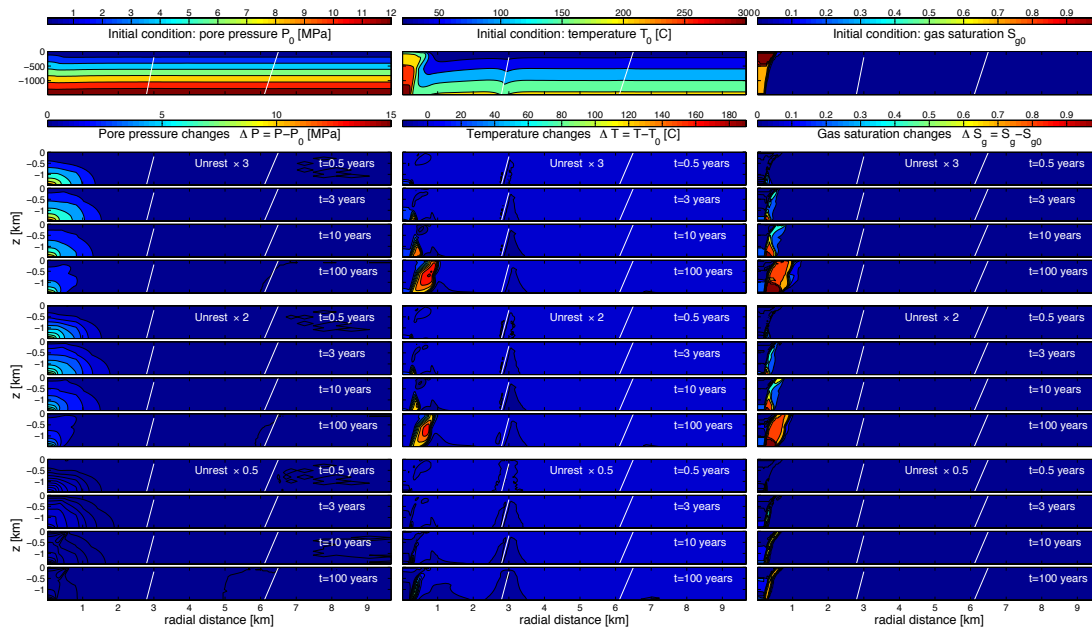


Figure 6. Changes in pore pressure, temperature and gas saturation relative to the steady state initial condition at different times after the initiation of unrest for Scenario I. Initial conditions are obtained as the steady-state solutions of central injection of 2400 t day^{-1} of H_2O and 1000 t day^{-1} of CO_2 , through a cylindrical conduit with radius 200 m. Unrest is simulated by injecting a mixture of H_2O and CO_2 through the central conduit. Injection rates for the unrest simulation are listed in Table 4. Note that color scale of initial conditions is different from either the respective color scale of unrest plots or the color scale of Fig. 5.

Title Page

Abstract

Introduction

Conclusions

References

Tables

Figures



Back

Close

Full Screen / Esc

Printer-friendly Version

Interactive Discussion



Numerical models for ground deformation and gravity changes

A. Coco et al.

Title Page

Abstract

Introduction

Conclusions

References

Tables

Figures



Back

Close

Full Screen / Esc

Printer-friendly Version

Interactive Discussion

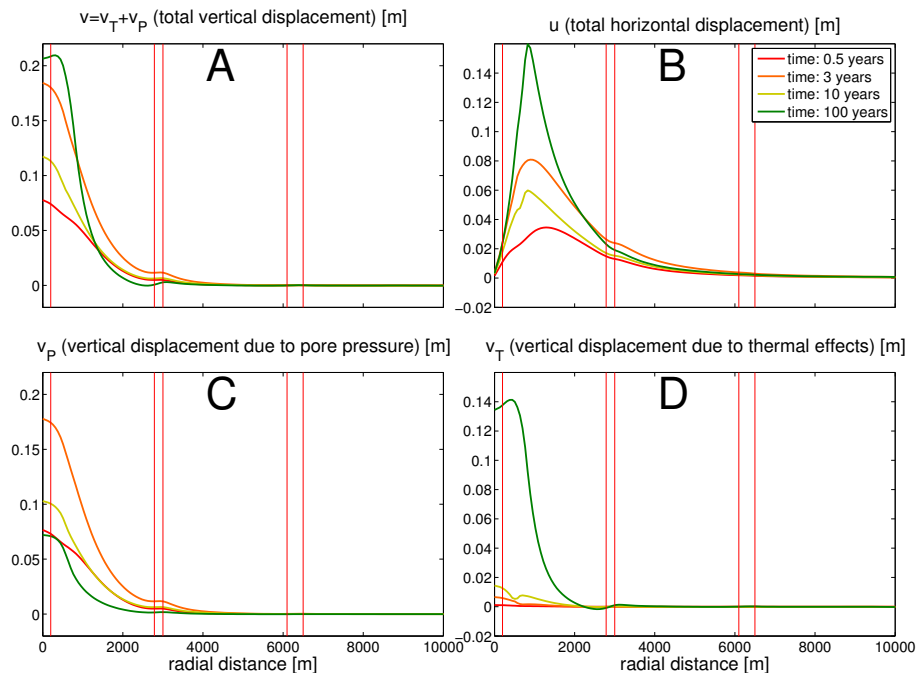


Figure 7. Ground deformation computed for Scenario I at the surface after $t = 0.5, 3, 10$ and 100 years of unrest: total vertical deformation (a), total horizontal deformation (b), vertical deformation due to pore pressure (c), and vertical deformation due to thermal effects (d). Vertical lines refer to the boundary of the central conduit and to the injection and shallowest points of faults.

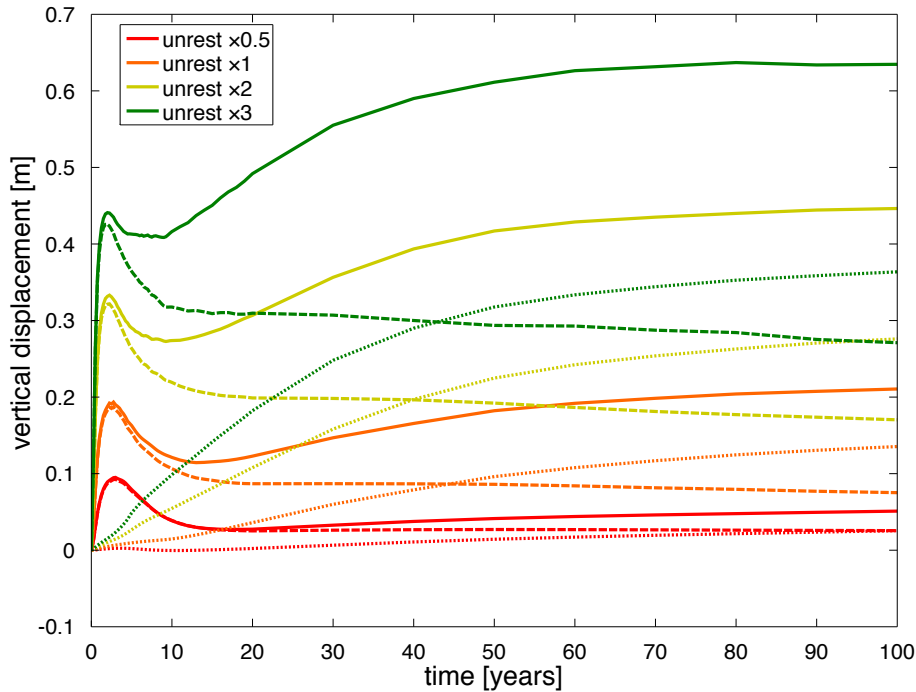


Figure 8. Computed vertical deformation at the center of the model ($r = 0, z = 0$) over 100 years of unrest for Scenario I with different injection rates (see Table 4). The solid line is the total vertical displacement $v = v_P + v_T$, while the dashed and dotted lines are the vertical displacement due to pore pressure v_P and thermal effects v_T , respectively.

Title Page

Abstract Introduction

Conclusions References

Tables Figures

◀ ▶

◀ ▶

Back Close

Full Screen / Esc

Printer-friendly Version

Interactive Discussion



Numerical models for ground deformation and gravity changes

A. Coco et al.

Title Page

Abstract

Introduction

Conclusions

References

Tables

Figures

◀

▶

◀

▶

Back

Close

Full Screen / Esc

Printer-friendly Version

Interactive Discussion

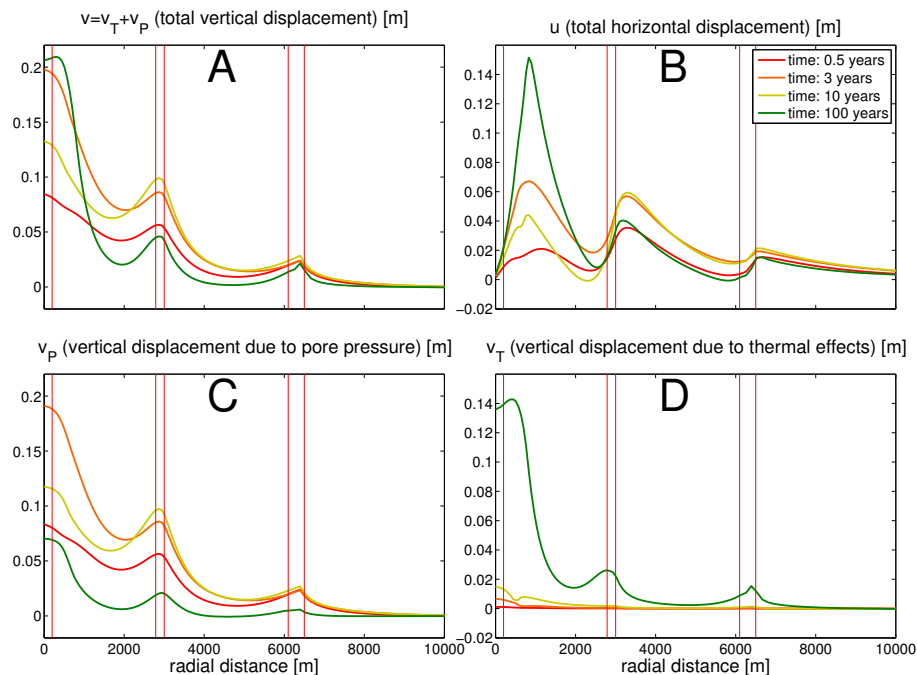


Figure 9. Ground deformation computed for Scenario II at the surface after $t = 0.5, 3, 10$ and 100 years of unrest: total vertical deformation **(a)**, total horizontal deformation **(b)**, vertical deformation due to pore pressure **(c)**, and vertical deformation due to thermal effects **(d)**. Vertical lines refer to the boundary of the central conduit and to the injection and shallowest points of faults.

Numerical models for ground deformation and gravity changes

A. Coco et al.

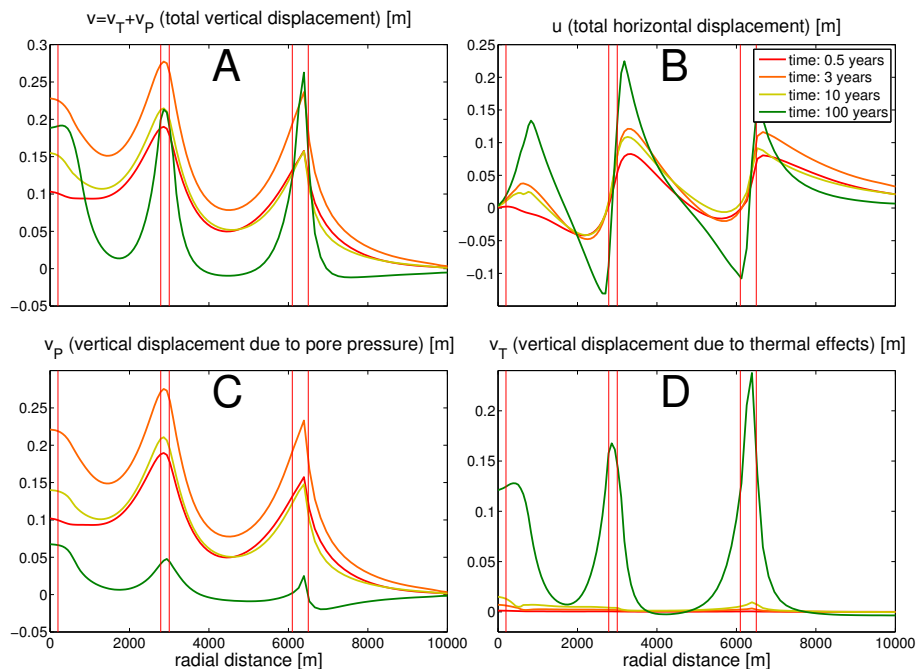


Figure 10. Ground deformation computed for Scenario III at the surface after $t = 0.5, 3, 10$ and 100 years of unrest: total vertical deformation (a), total horizontal deformation (b), vertical deformation due to pore pressure (c), and vertical deformation due to thermal effects (d). Vertical lines refer to the boundary of the central conduit and to the injection and shallowest points of faults.

Numerical models for ground deformation and gravity changes

A. Coco et al.

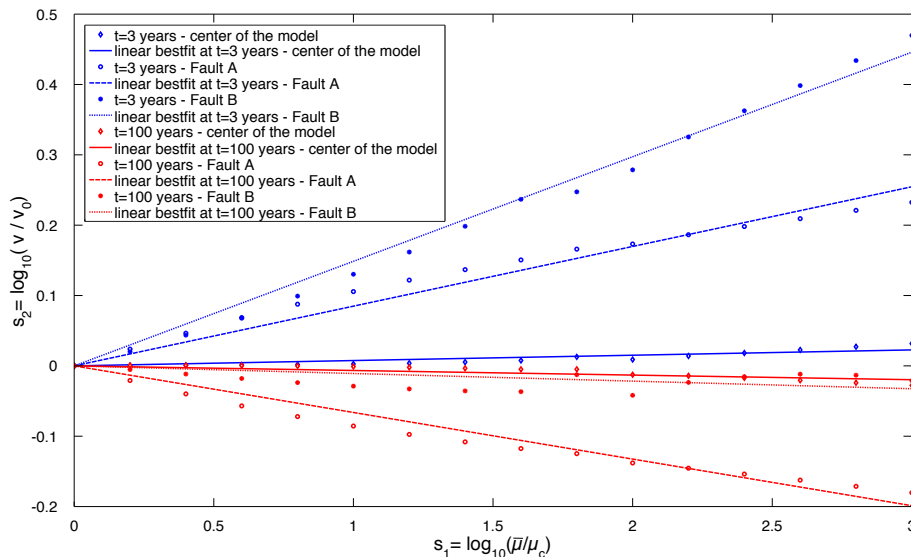


Figure 11. Uplift variations against variations in rigidity at faults for Scenario III. Decreasing the rigidity by s_1 orders of magnitude (i.e. dividing the rigidity by 10^{s_1}), the corresponding uplift changes by s_2 orders of magnitude (i.e. by a factor of 10^{s_2}). Blue lines refer to the simulation at $t = 3$ years, while red lines refer to $t = 100$ years. Variation in uplift is computed at the center of the model $r = z = 0$ (diamonds), Fault A (circles) and Fault B (stars). Linear bestfits (constrained through the origin $s_1 = s_2 = 0$) are represented by dotted, dashed and solid lines for the center of the model, Fault A and Fault B, respectively. The slopes of the bestfit lines for simulations at $t = 3$ years are about 0.0849 for Fault A, 0.149 for Fault B and 0.00756 at the center of the model, while for simulations at $t = 100$ years are about -0.0663 for Fault A, -0.0108 for Fault B and -0.00656 at the center of the model.

Title Page

Abstract

Introduction

Conclusions

References

Tables

Figures



Back

Close

Full Screen / Esc

Printer-friendly Version

Interactive Discussion



Numerical models for ground deformation and gravity changes

A. Coco et al.

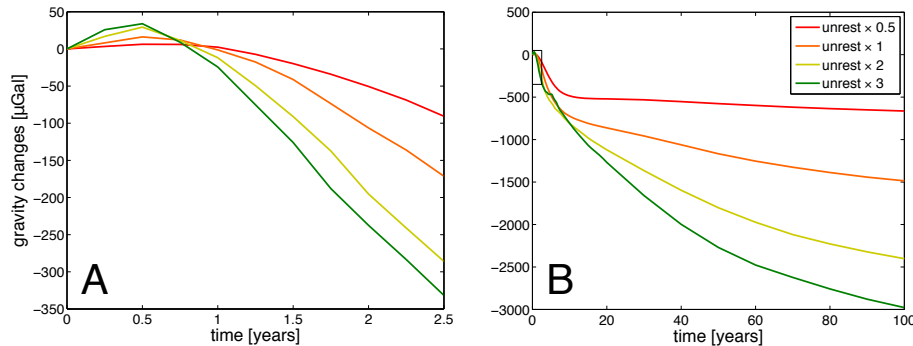


Figure 12. Computed (residual) gravity changes at the center of the model ($r = 0, z = 0$) during 100 years on unrest (**a**) for Scenario I with different injection rates (see Table 4): $\text{unrest} \times 0.5$, $\text{unrest} \times 1$, $\text{unrest} \times 2$, $\text{unrest} \times 3$. Plot (**b**) is a zoom on the first 2.5 years of unrest (boxed on plot **a**).

[Title Page](#)[Abstract](#)[Introduction](#)[Conclusions](#)[References](#)[Tables](#)[Figures](#)[Back](#)[Close](#)[Full Screen / Esc](#)[Printer-friendly Version](#)[Interactive Discussion](#)

Numerical models for ground deformation and gravity changes

A. Coco et al.

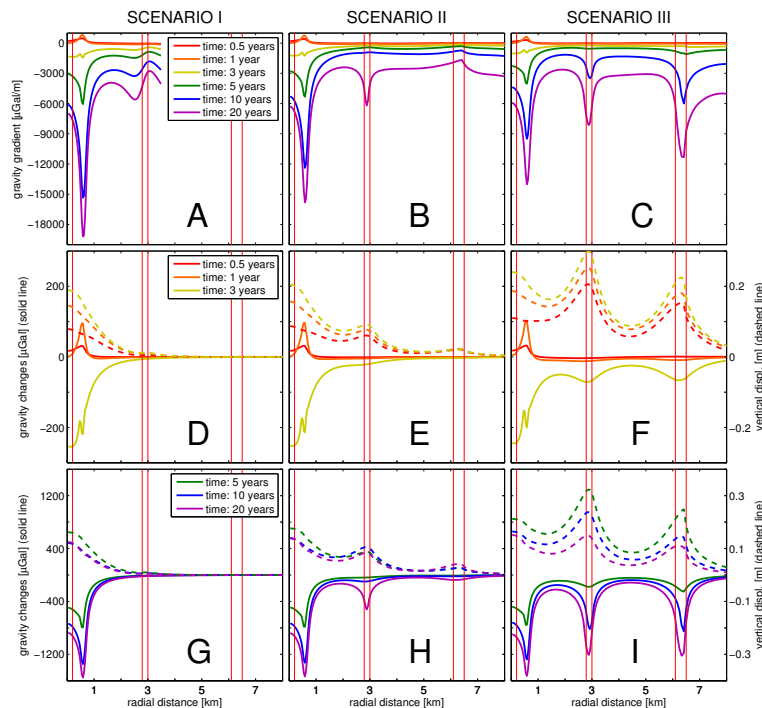


Figure 13. Plots (a–c) (residual) gravity gradient $\Delta g/v$ on the surface after $t = 0.5, 1, 3, 5, 10$ and 20 years of unrest for Scenarios I, II and III. The respective (residual) gravity changes Δg (solid lines) and vertical deformation v (dashed lines) are reported in double y axis plots for $t = 0.5, 1$ and 3 (plots d–f) and $t = 5, 10$ and 20 (plots g–i) years of unrest. Vertical lines refer to the boundary of the central conduit and to the injection and shallowest points of faults. In Scenario I we observe that the gravity gradient starts to oscillate at $r \sim 2500$ m. This behavior is a purely numerical artefact, since for $r > 2500$ m the uplift approaches to zero and the gravity gradient becomes singular. For this reason the plot is limited to $0 < r < 3500$ m. For the interpretation of the legend the reader is referred to the color version of the paper.