

Supplement of Solid Earth Discuss., 7, 2109–2148, 2015
<http://www.solid-earth-discuss.net/7/2109/2015/>
doi:10.5194/sed-7-2109-2015-supplement
© Author(s) 2015. CC Attribution 3.0 License.



Supplement of

Cyclic fracturing during spine extrusion at Unzen volcano, Japan

O. D. Lamb et al.

Correspondence to: O. D. Lamb (o.lamb@liv.ac.uk)

The copyright of individual parts of the supplement might differ from the CC-BY 3.0 licence.

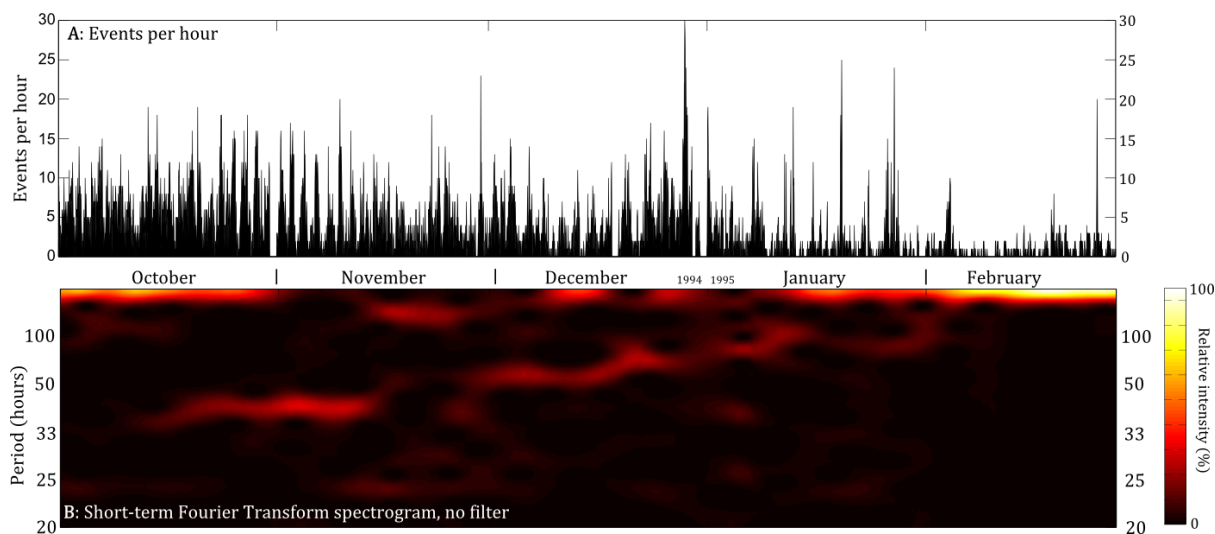


Figure S1: (A) The hourly event record of events detected from continuous data recorded at station FG1 at Unzen from 1st October 1994 to 28th February 1995. (B) The STFT spectrogram for the hourly event count time-series plotted in (A), without any Butterworth filter applied to the time-series.

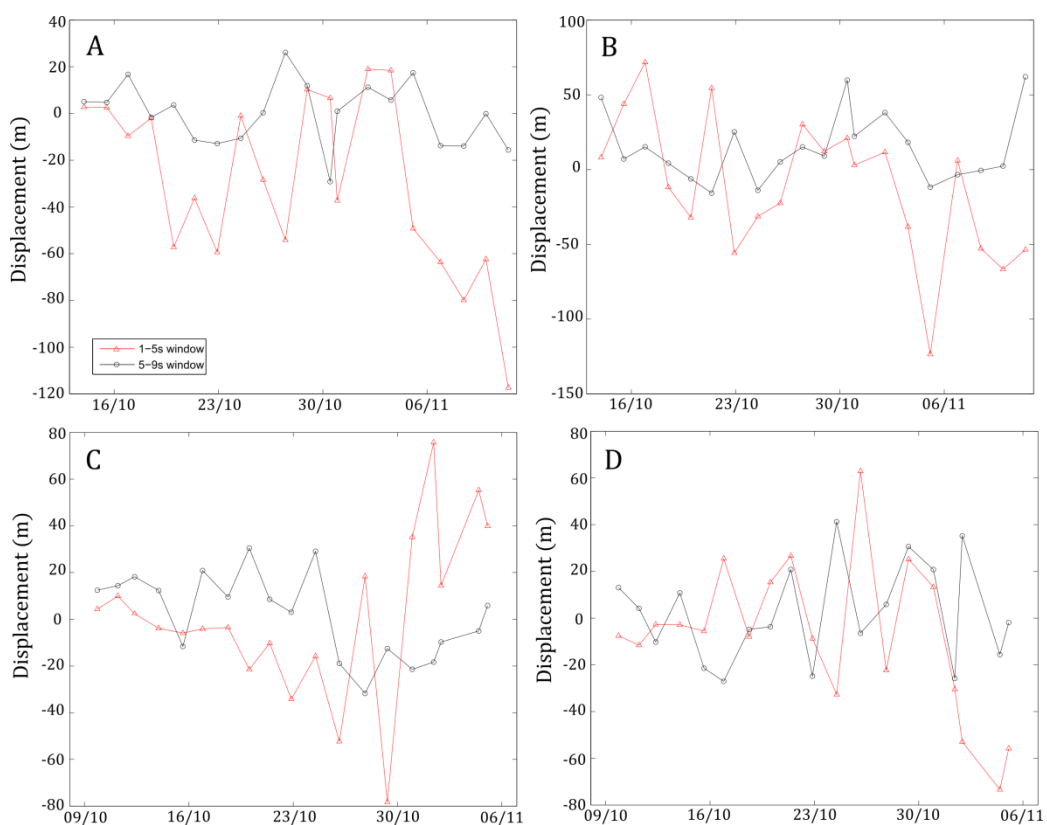


Figure S2: Source displacements between the first stack and all other stacks for data bandpassed between 1-5 Hz (A and C) and 5-10 Hz (B and D) for cluster 1 (A and B) and cluster 2 (C and D).

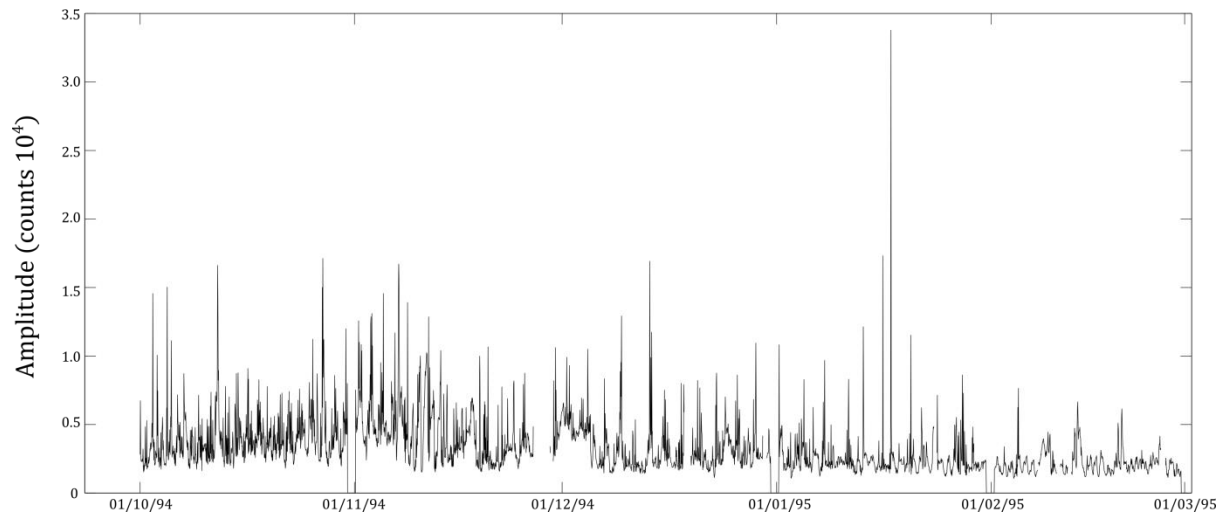


Figure S3: 10-minute averaged Real-time Seismic Amplitude Measurements of the continuous data from station FG1.