

Interactive
Comment

Interactive comment on “Spatial variability of soil properties and soil erodibility in the Alqueva dam watershed, Portugal” by V. Ferreira et al.

V. Ferreira et al.

tpanago@ualg.pt

Received and published: 3 March 2015

We would like to thank the reviewer for their interest in our work and for helpful comments and suggestions that will significantly improve the paper. It was mainly suggestions/corrections that were modestly accepted by the authors. The updated manuscript is attached as a supplement. The manuscript includes the modifications according the response to both reviewers. After corrections the number lines changed. The answers and comments are: Line 92. The word “supply” was deleted. Line 125. N:P:K was changed to NPK; Line 137. The expression “rocks or limestone concretions” was altered to “rocks and gravels”. Line 148. The equation 1 was mentioned in the text. Line 174. The equation 2 was referred in this paragraph. Line 208. We corrected the number of the equation to equation 3. Line 237. The value was

Full Screen / Esc

Printer-friendly Version

Interactive Discussion

Discussion Paper



**Interactive
Comment**

corrected to 70.2% according the Table 1. Line 265. The word “values” was changed to “value” as suggested. Line 269 and 270. The electric conductivity unit dS/cm was corrected to dS/m (as presented in Table 1). Line 279, 280 and 281 - We agree with the reviewer, and the paragraph was deleted because the difference between Montado grassland and olive orchard is small and the different crops are sufficient to justify the changes in pH values without mentioning about the tillage. Line 580 – The legends of the maps were modified to be the same size and with the same font. Line 588 – We changes the figure and instead of plus (+) we put different marks for all the samples per land-use and we added a legend with the meaning of the letters (M: Montado grassland, L: Lucerne cultivation, and O: Olive tree orchard). Line 597 – The Cluster 1, Cluster 2 and Cluster 3 was placed above each corresponding graph, as suggested.

Please also note the supplement to this comment:

<http://www.solid-earth-discuss.net/7/C134/2015/sed-7-C134-2015-supplement.pdf>

Interactive comment on Solid Earth Discuss., 7, 301, 2015.

[Full Screen / Esc](#)[Printer-friendly Version](#)[Interactive Discussion](#)[Discussion Paper](#)

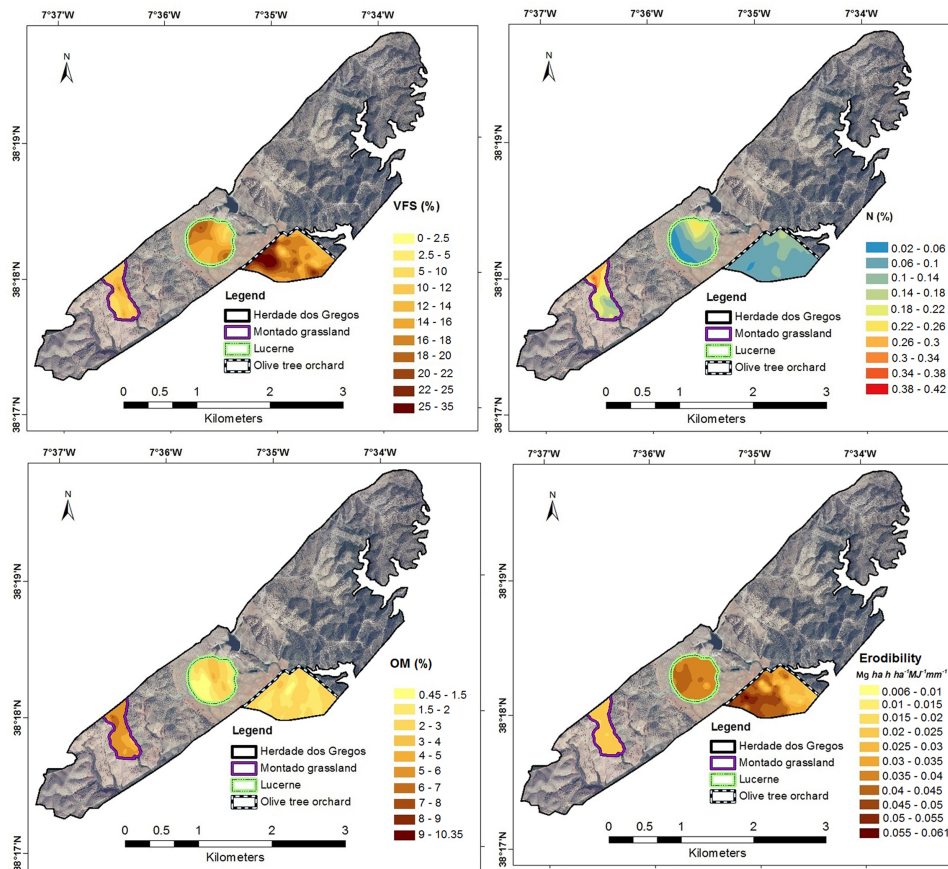


Fig. 1. Figure 3 - Prediction map of very fine sand (VFS), total nitrogen (N), organic matter (OM) and soil erodibility (K factor).

Interactive
Comment

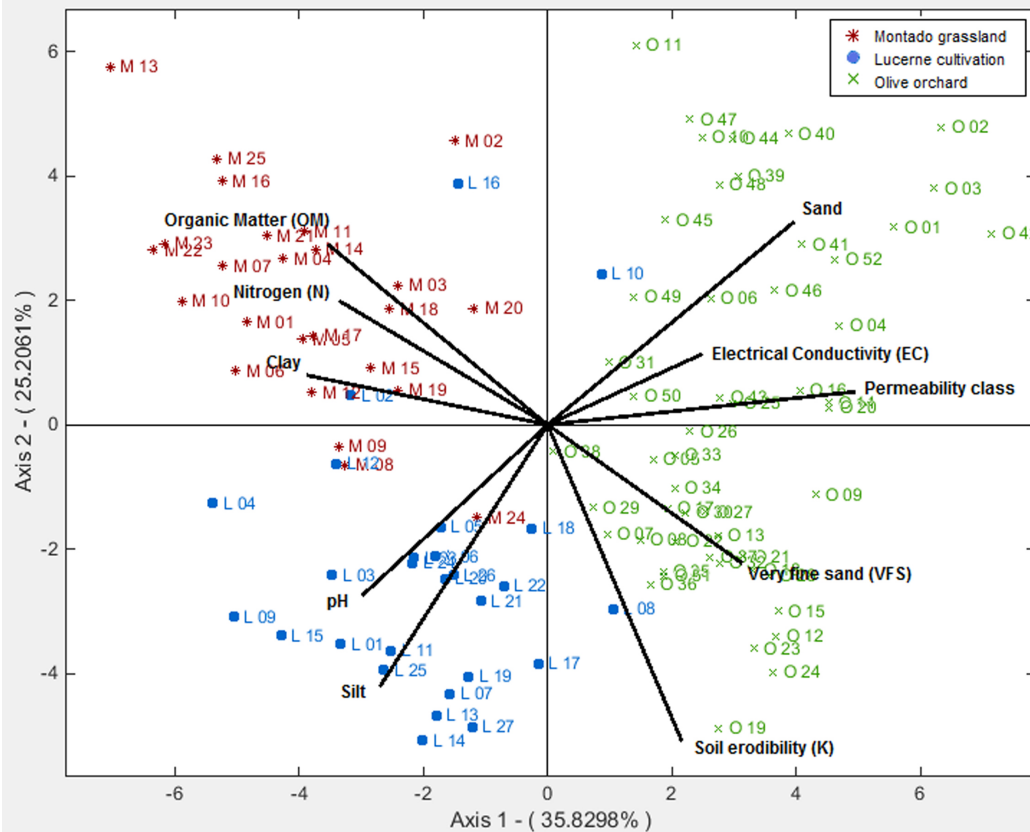


Fig. 2. Figure 4 - The HJ-biplot representation matrix of soil samples and studied variables.

Full Screen / Esc

Printer-friendly Version

Interactive Discussion

Discussion Paper



Interactive
Comment

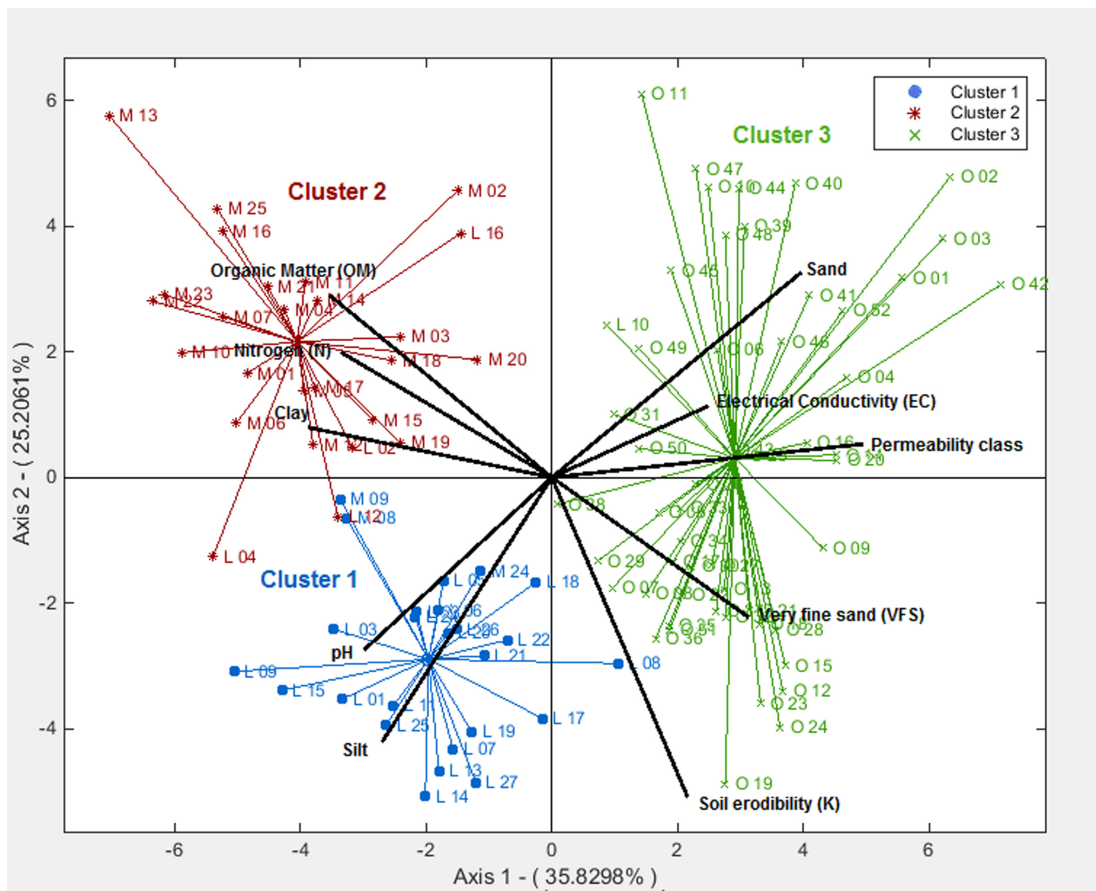


Fig. 3. Figure 5 - Hierarchical clusters representation of soil samples and studied variables.

Full Screen / Esc

Printer-friendly Version

Interactive Discussion

Discussion Paper

