

***Interactive comment on “3-D visualisation of  
palaeoseismic trench stratigraphy and trench  
logging using terrestrial remote sensing and GPR  
– combining techniques towards an objective  
multiparametric interpretation” by S.  
Schneiderwind et al.***

**S. Schneiderwind et al.**

s.schneiderwind@nug.rwth-aachen.de

Received and published: 11 January 2016

Thanks to both Anonymous Referees for their thorough reviews and improving comments. A detailed response is given in the supplement. Updated and newly added figures are attached.

Please also note the supplement to this comment:

C1841

<http://www.solid-earth-discuss.net/7/C1841/2016/sed-7-C1841-2016-supplement.pdf>

Interactive comment on Solid Earth Discuss., 7, 2697, 2015.

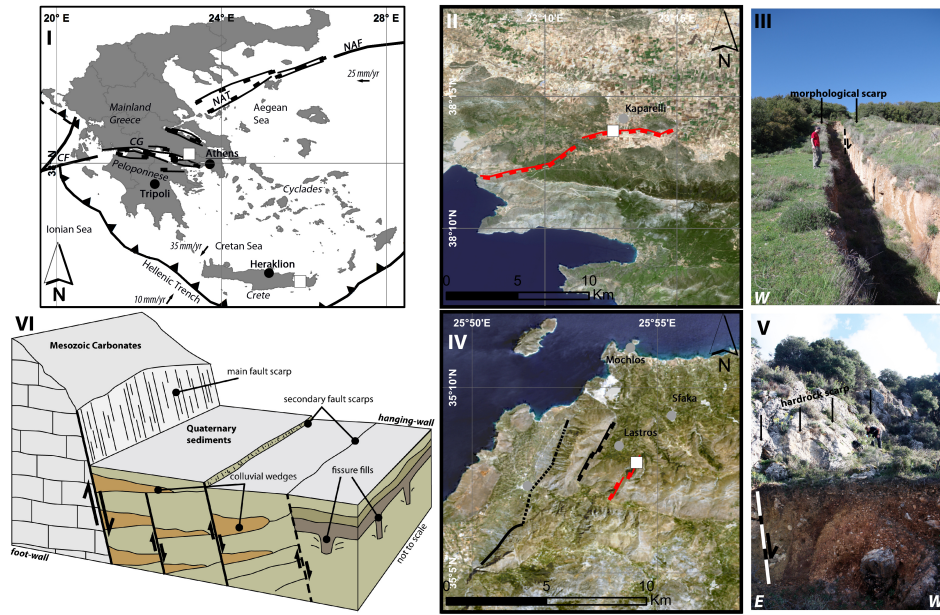


Fig. 1.

C1843

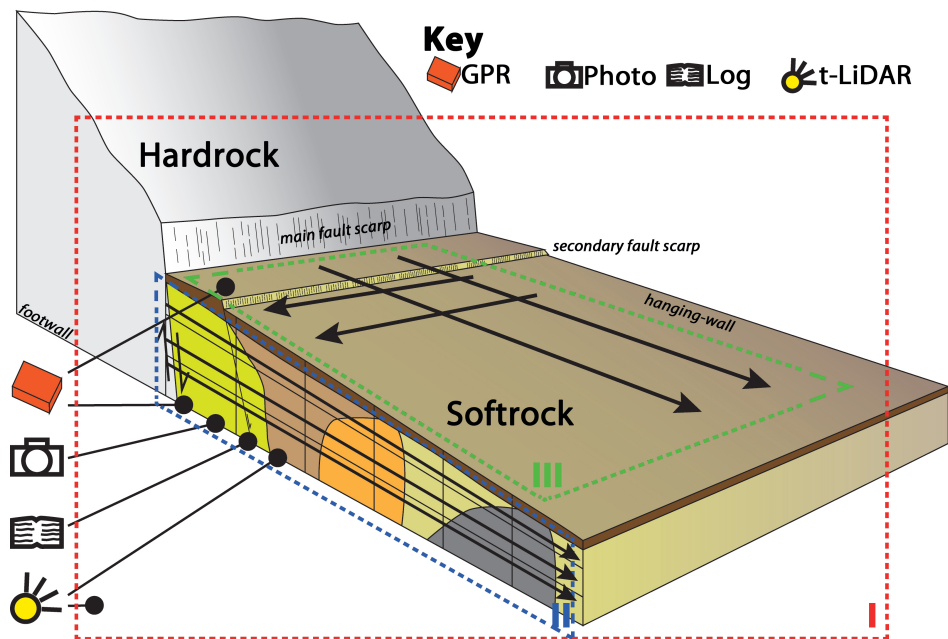


Fig. 2.

C1844

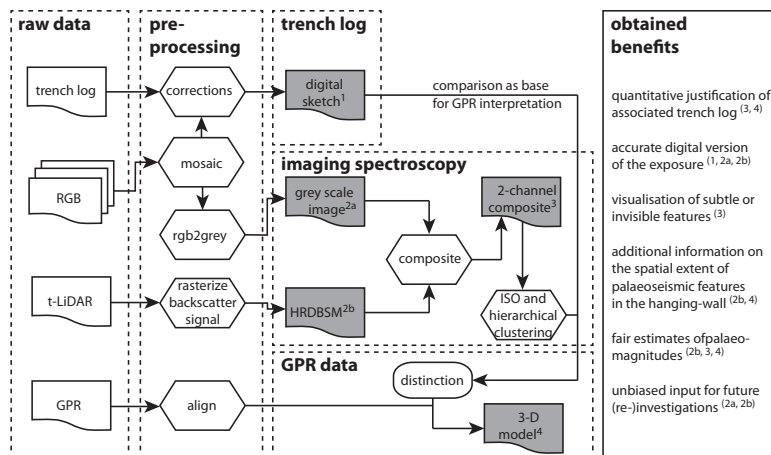


Fig. 3.

C1845

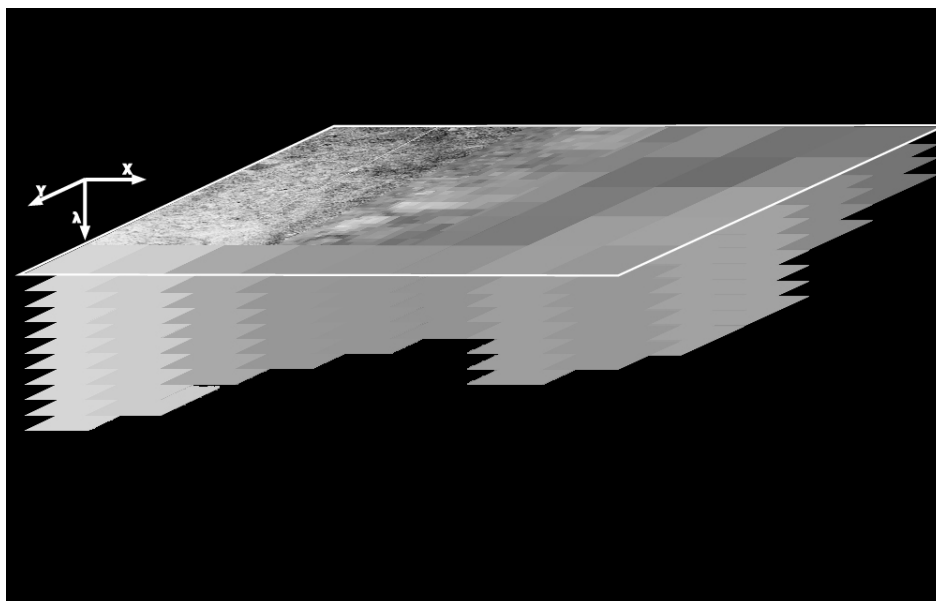


Fig. 4.

C1846

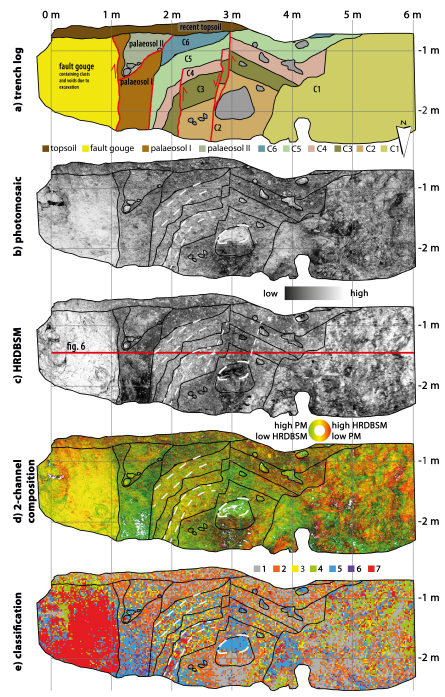


Fig. 5.

C1847

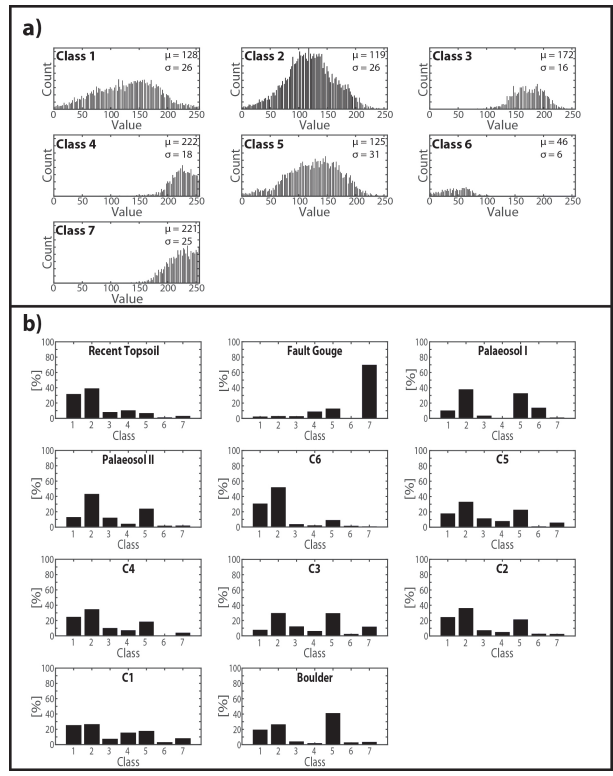


Fig. 6.

C1848



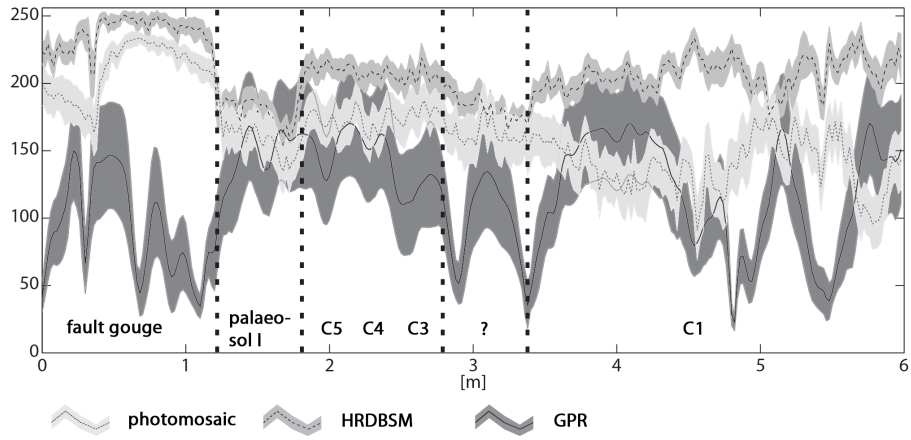


Fig. 7.

C1849

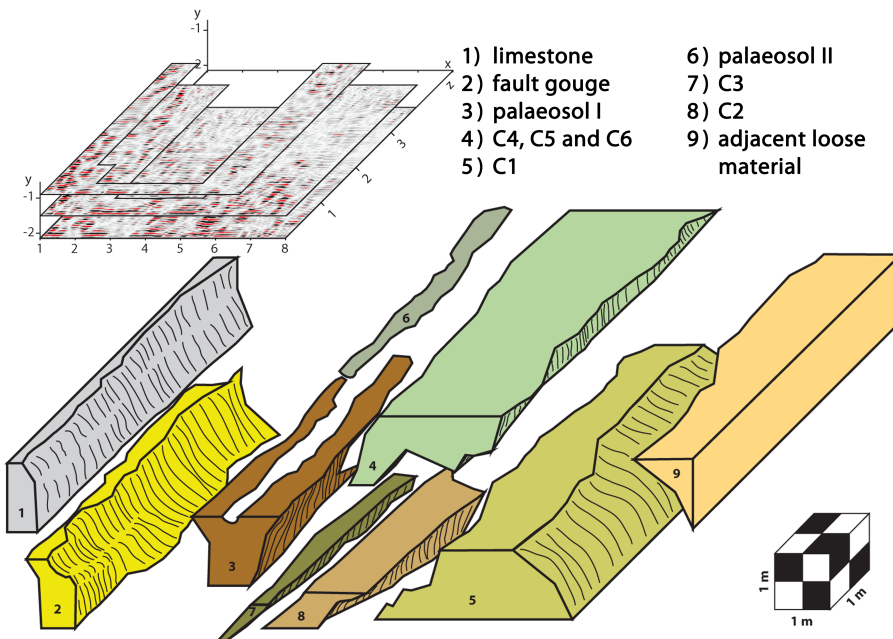
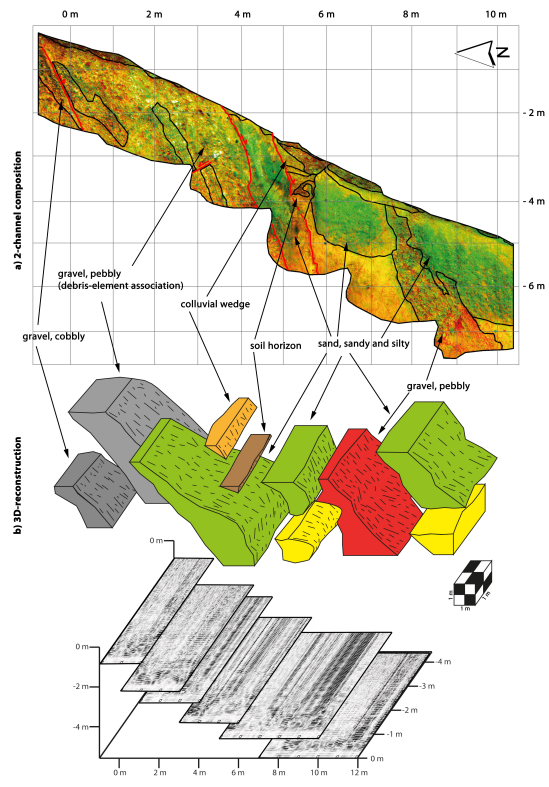


Fig. 8.

C1850



**Fig. 9.**

C1851