

Interactive  
Comment

***Interactive comment on “3-D visualisation of palaeoseismic trench stratigraphy and trench logging using terrestrial remote sensing and GPR – combining techniques towards an objective multiparametric interpretation” by S. Schneiderwind et al.***

**S. Schneiderwind et al.**

s.schneiderwind@nug.rwth-aachen.de

Received and published: 11 January 2016

Thanks to both Anonymous Referees for their thorough reviews and improving comments. A detailed response is given in the supplement. Updated and newly added figures are attached.

Please also note the supplement to this comment:

C1841

Full Screen / Esc

Printer-friendly Version

Interactive Discussion

Discussion Paper



<http://www.solid-earth-discuss.net/7/C1841/2016/sed-7-C1841-2016-supplement.pdf>

Interactive comment on Solid Earth Discuss., 7, 2697, 2015.

**SED**

7, C1841–C1851, 2016

Interactive  
Comment

Full Screen / Esc

Printer-friendly Version

Interactive Discussion

Discussion Paper

C1842



Interactive  
Comment

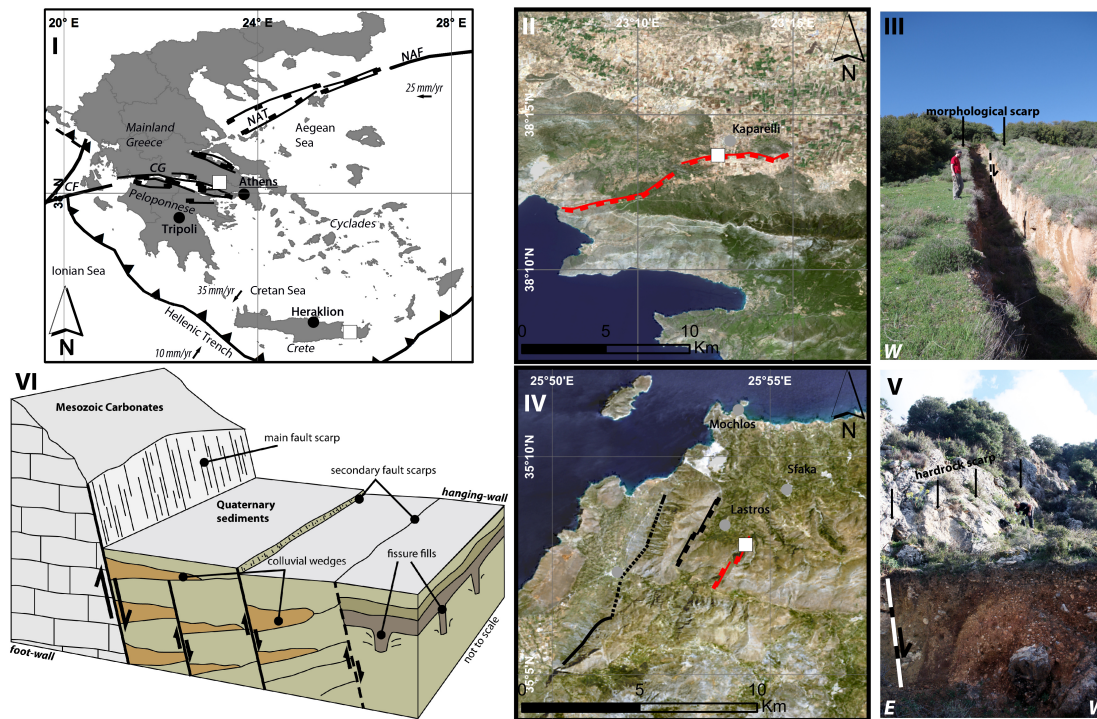


Fig. 1.

Full Screen / Esc

Printer-friendly Version

Interactive Discussion

Discussion Paper



Interactive  
Comment

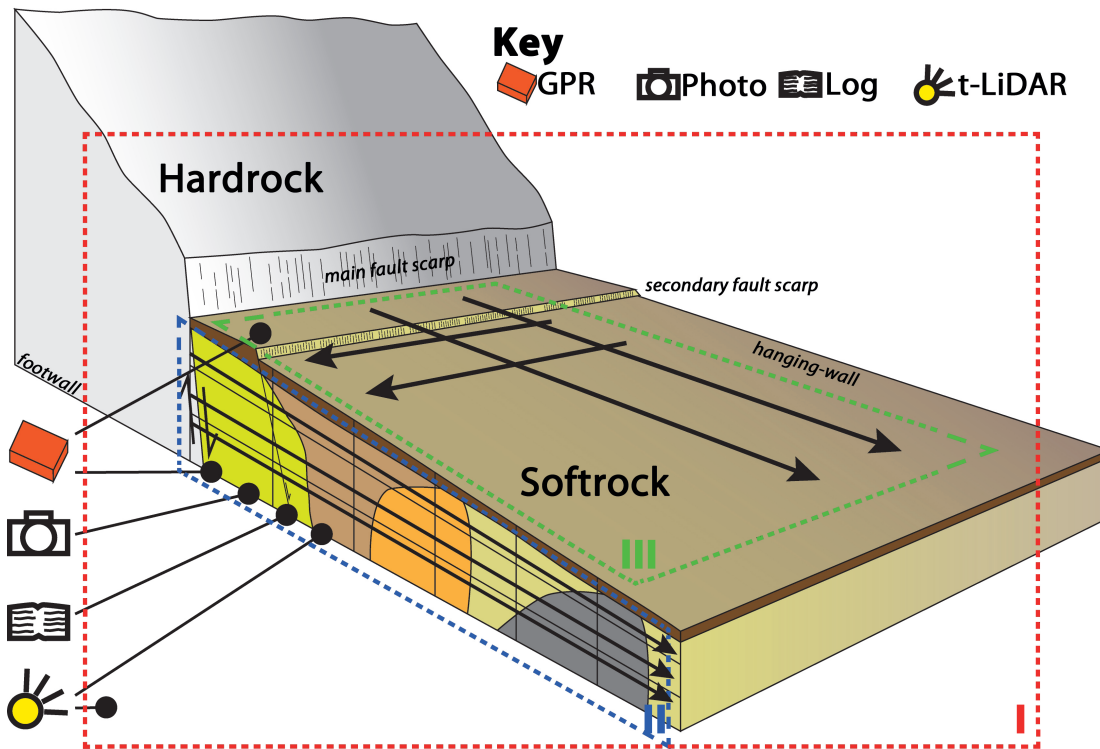


Fig. 2.

Full Screen / Esc

Printer-friendly Version

Interactive Discussion

Discussion Paper



## Interactive Comment

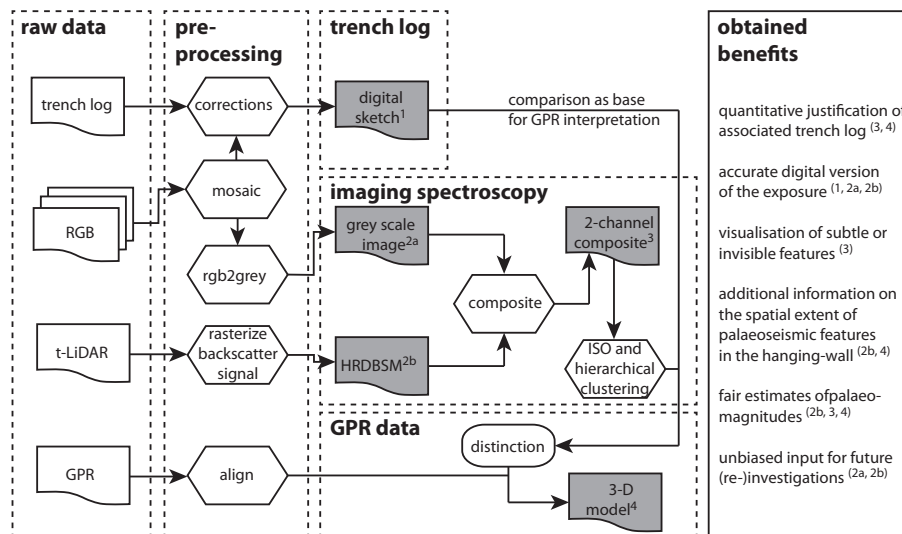


Fig. 3.

Full Screen / Esc

Printer-friendly Version

Interactive Discussion

Discussion Paper

Interactive  
Comment

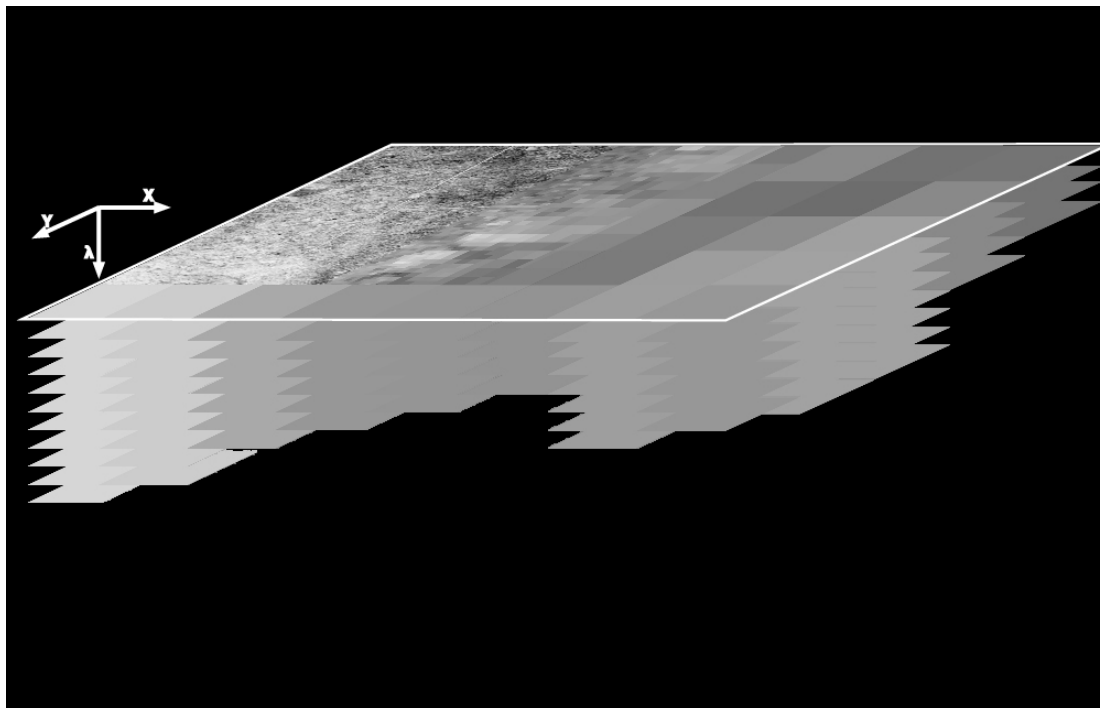


Fig. 4.

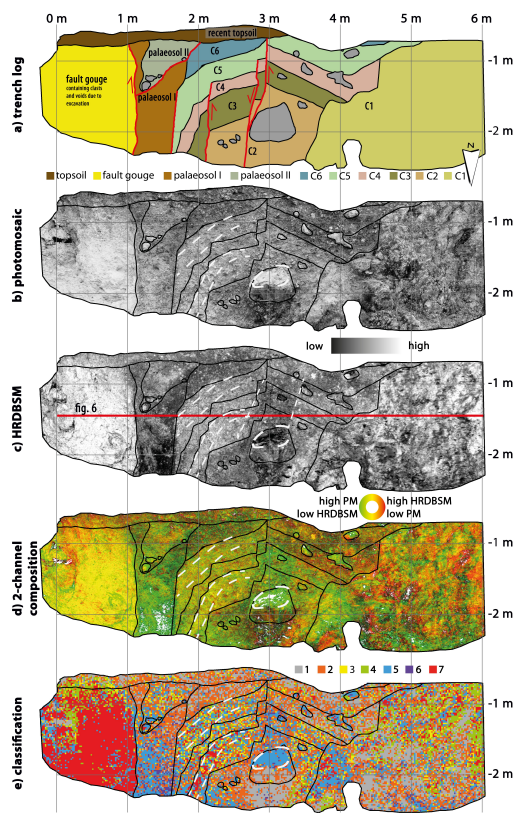
Full Screen / Esc

Printer-friendly Version

Interactive Discussion

Discussion Paper





Interactive  
Comment

Full Screen / Esc

Printer-friendly Version

Interactive Discussion

Discussion Paper

Fig. 5.



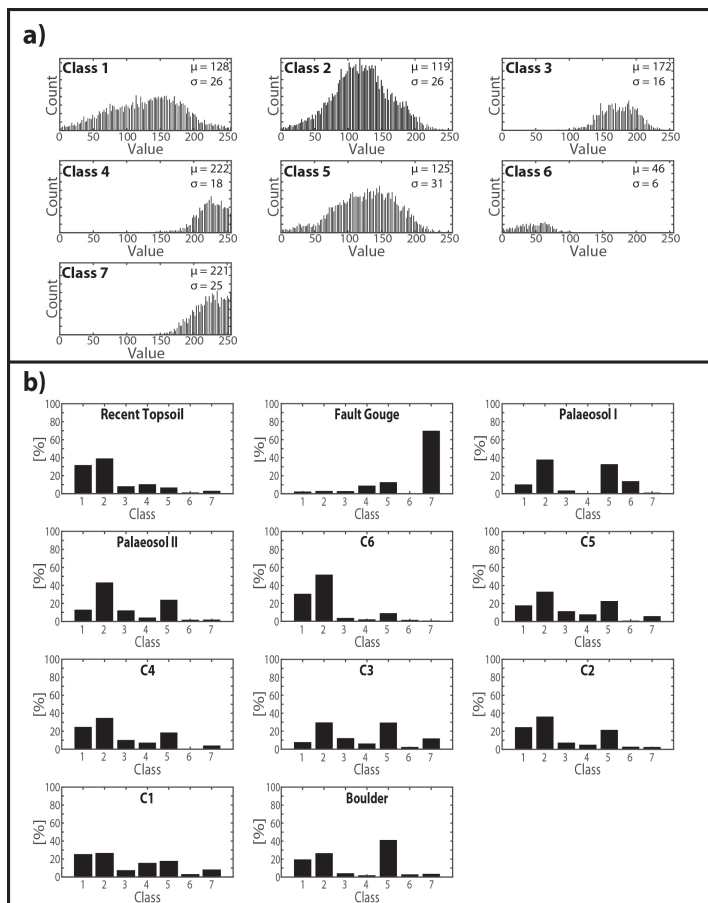


Fig. 6.

Full Screen / Esc

Printer-friendly Version

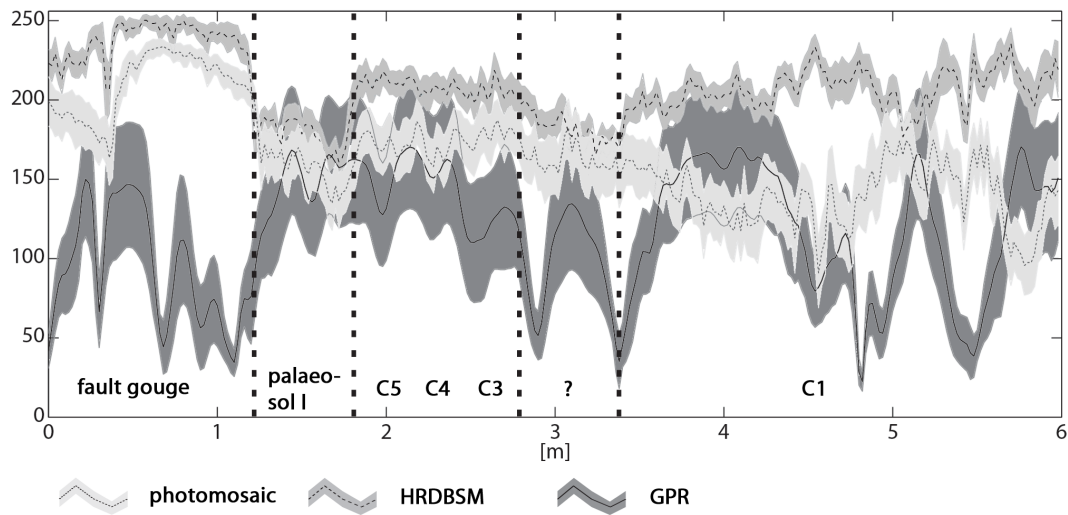
Interactive Discussion

Discussion Paper





Interactive  
Comment



**Fig. 7.**

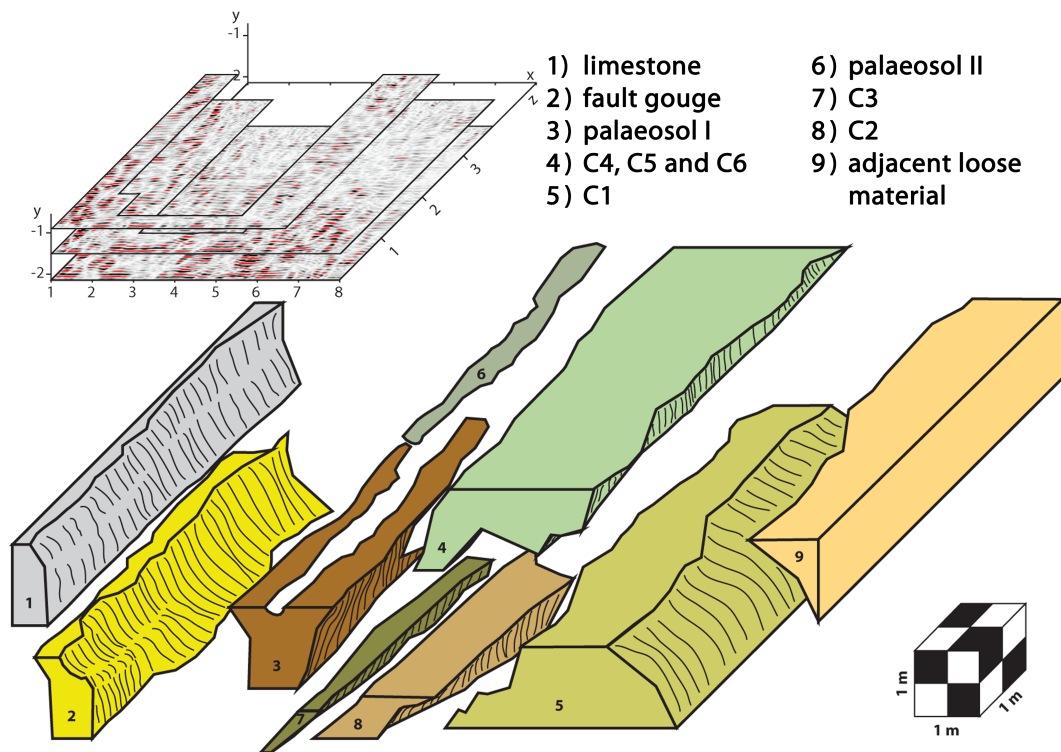
Full Screen / Esc

Printer-friendly Version

Interactive Discussion

Discussion Paper

Interactive  
Comment



**Fig. 8.**

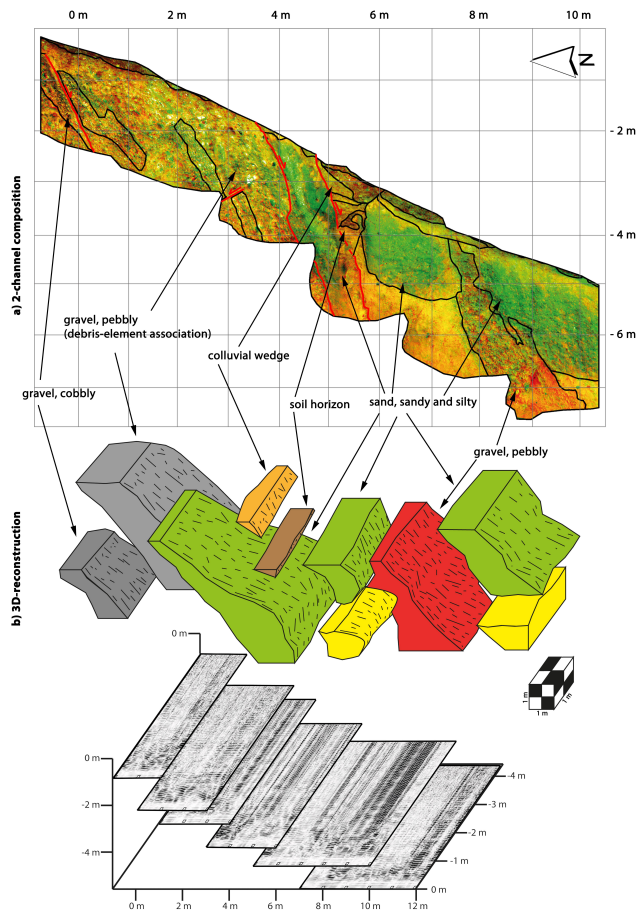
Full Screen / Esc

Printer-friendly Version

Interactive Discussion

Discussion Paper

Interactive  
Comment



**Fig. 9.**

Full Screen / Esc

Printer-friendly Version

Interactive Discussion

Discussion Paper

