

## ***Interactive comment on “Soil aggregation, erodibility and erosion rates in mountain soils (NW-Alps, Italy)” by S. Stanchi***

**S. Stanchi**

silvia.stanchi@unito.it

Received and published: 26 March 2015

We would like to thank all referees for the valuable comments and feedback. We recognise the points of weakness highlighted by the referees and tried to make the manuscript more coherent and sound according to their observations. We hope the quality of the manuscript has improved. Please, find attached an itemized point-by-point response to the comments of the reviewers (see supplement) Kind regards Silvia Stanchi, corresp. author

Please also note the supplement to this comment:

<http://www.solid-earth-discuss.net/7/C245/2015/sed-7-C245-2015-supplement.pdf>

---

C245

Interactive comment on Solid Earth Discuss., 7, 185, 2015.

C246

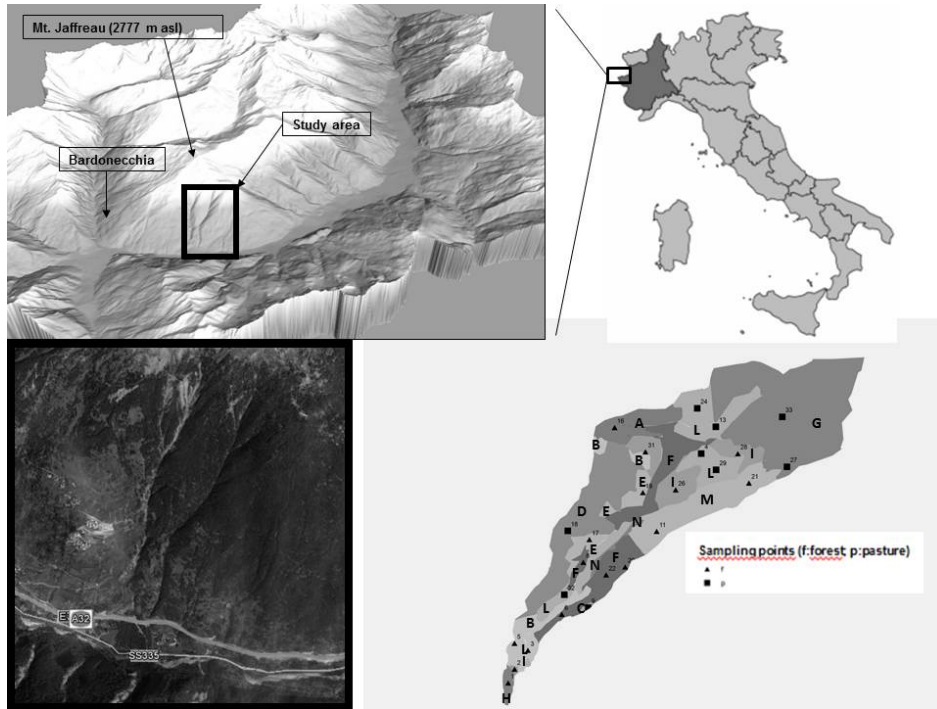


Fig. 1.

C247

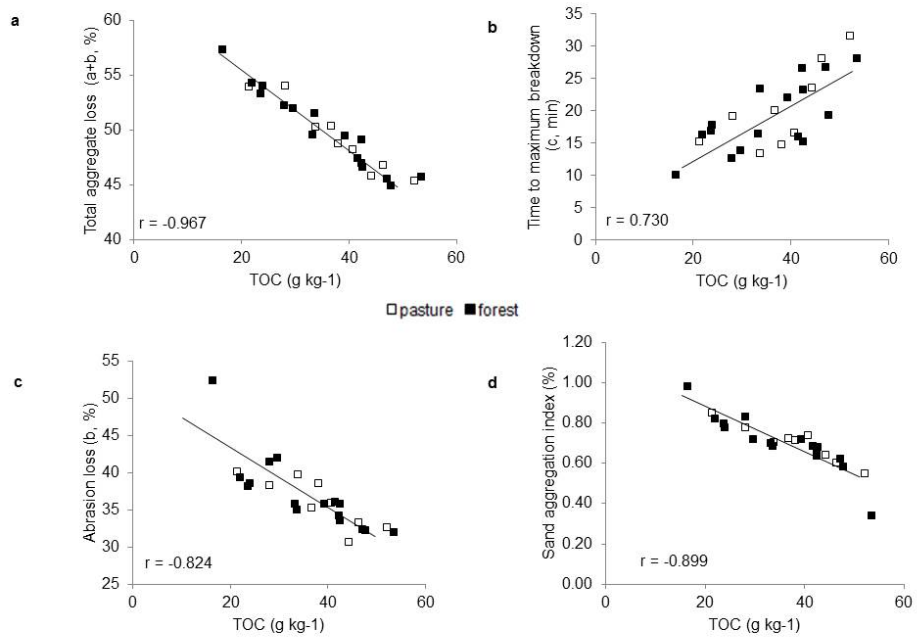


Fig. 2.

C248

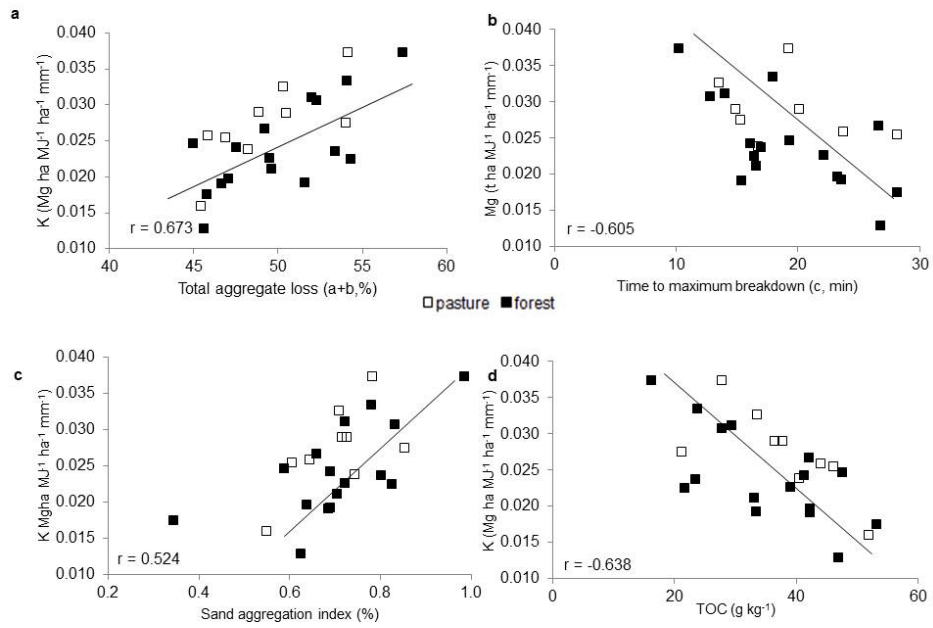


Fig. 3.

C249

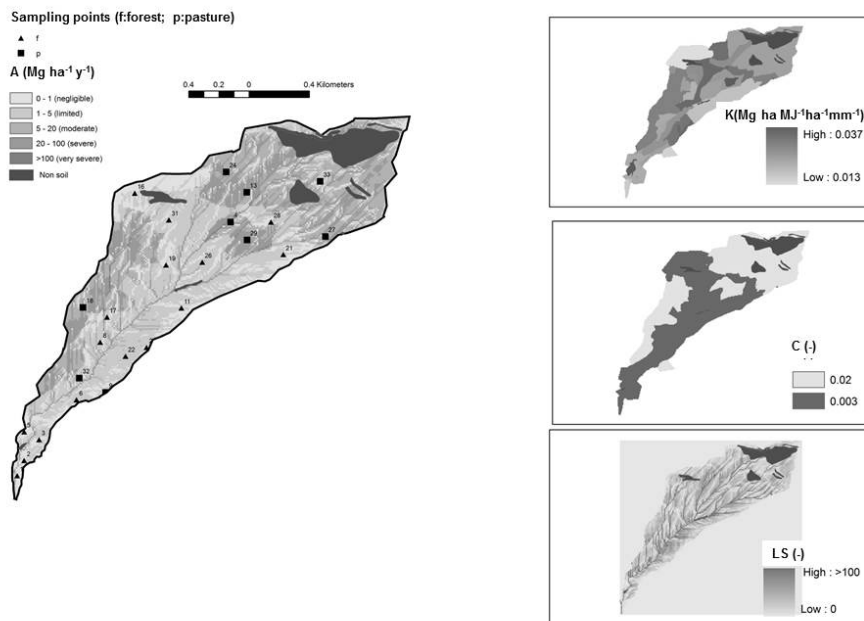


Fig. 4.

C250

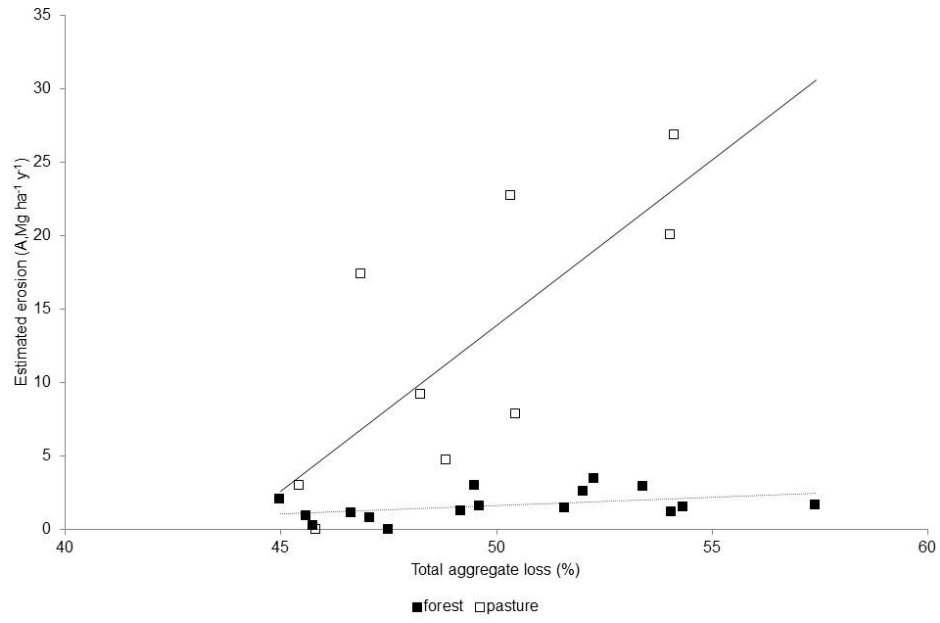


Fig. 5.

C251

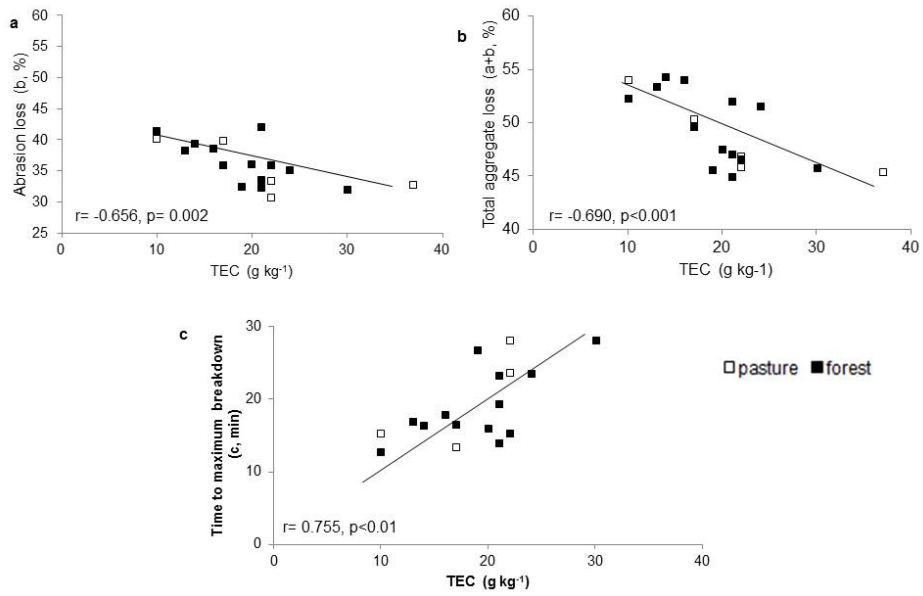


Fig. 6.

C252

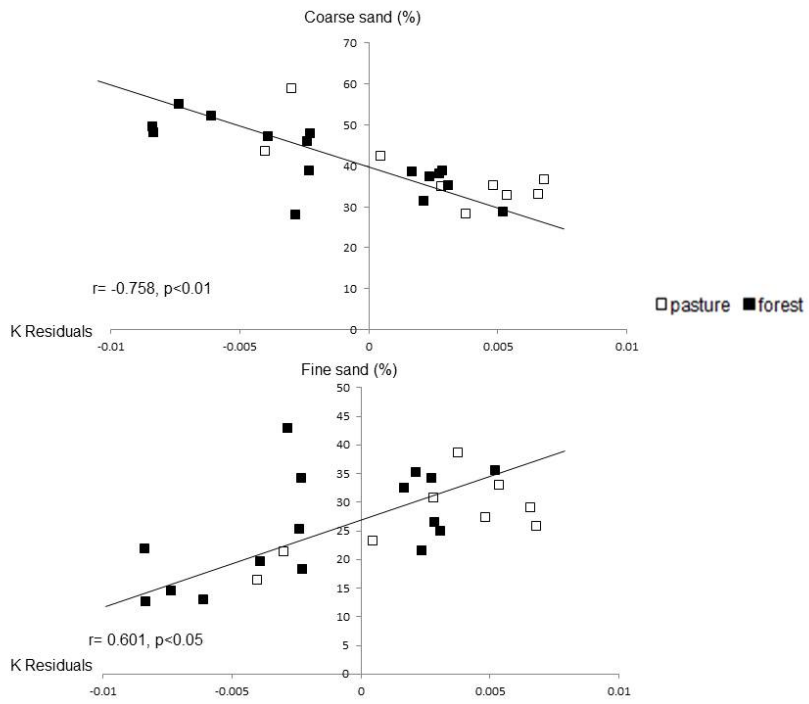


Fig. 7.

C253

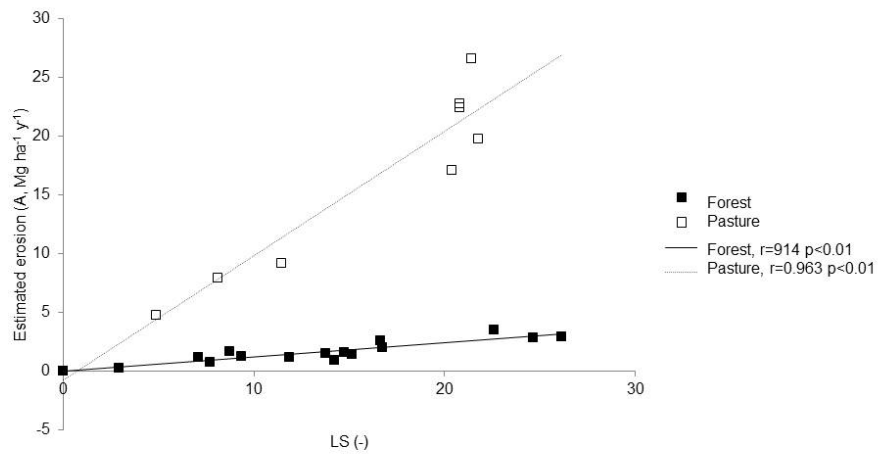


Fig. 8.

C254