

Interactive comment on “Soil aggregation, erodibility and erosion rates in mountain soils (NW-Alps, Italy)” by S. Stanchi

S. Stanchi

silvia.stanchi@unito.it

Received and published: 26 March 2015

We would like to thank all referees for the valuable comments and feedback. We recognise the points of weakness highlighted by the referees and tried to make the manuscript more coherent and sound according to their observations. We hope the quality of the manuscript has improved. Please, find attached an itemized point-by-point response to the comments of the reviewers (see supplement) Kind regards Silvia Stanchi, corresp. author

Please also note the supplement to this comment:

<http://www.solid-earth-discuss.net/7/C255/2015/sed-7-C255-2015-supplement.pdf>

C255

Interactive comment on Solid Earth Discuss., 7, 185, 2015.

C256

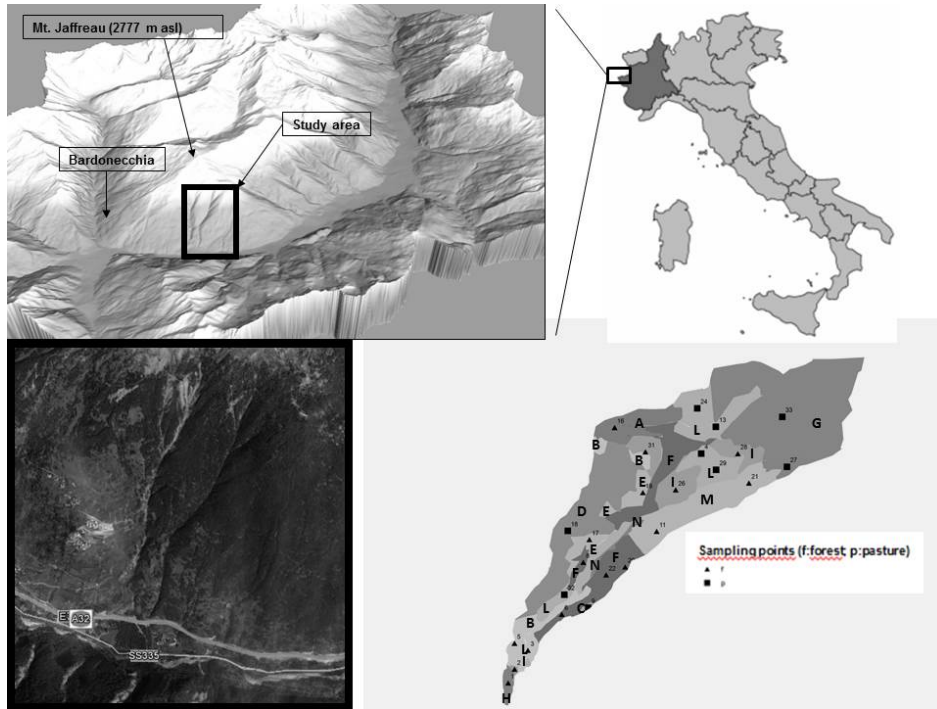


Fig. 1.

C257

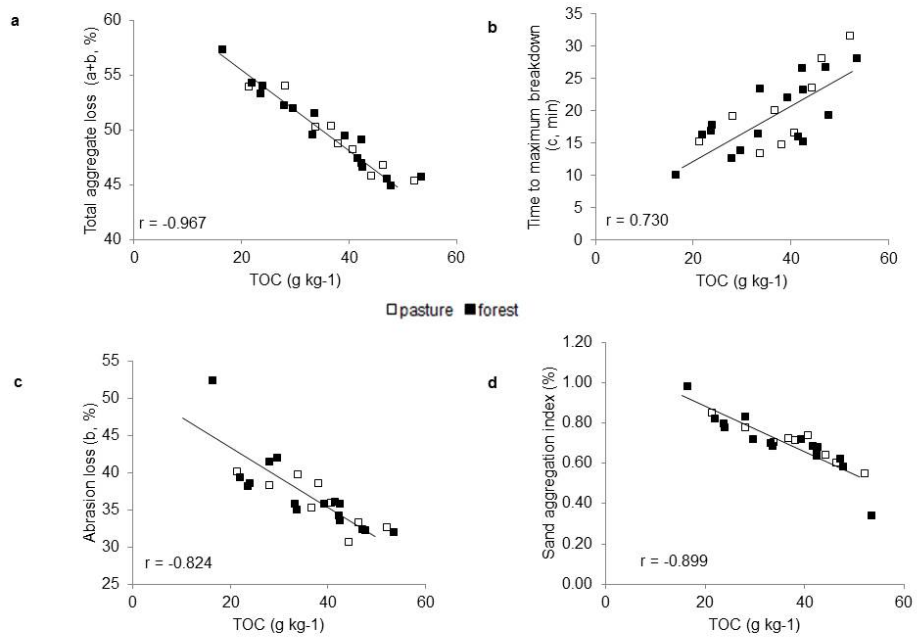


Fig. 2.

C258

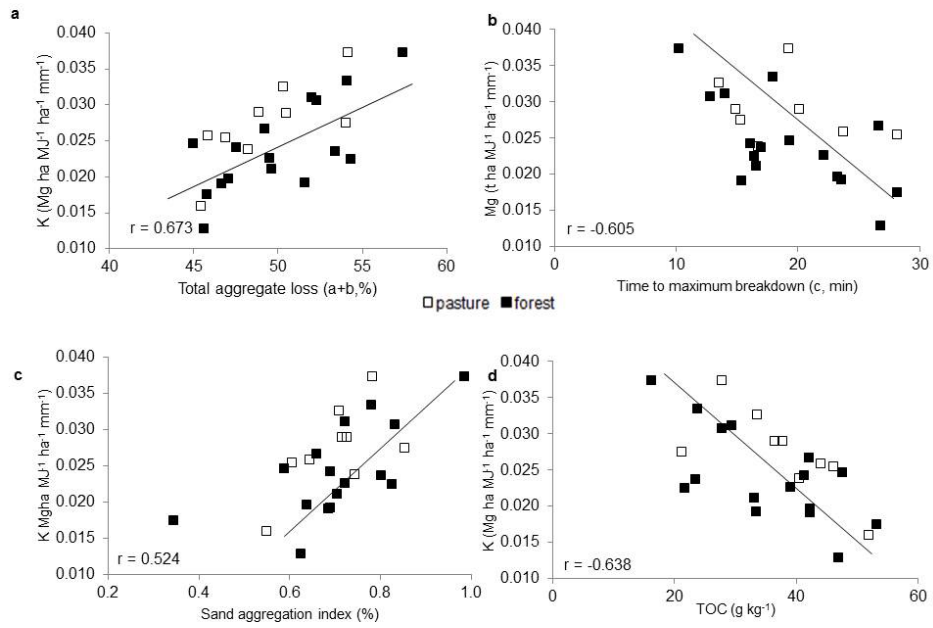


Fig. 3.

C259

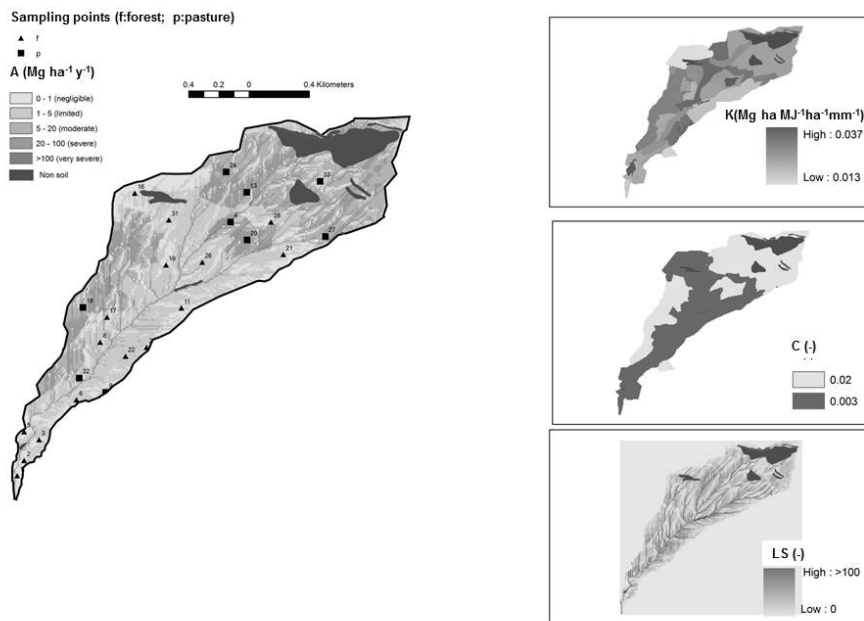


Fig. 4.

C260

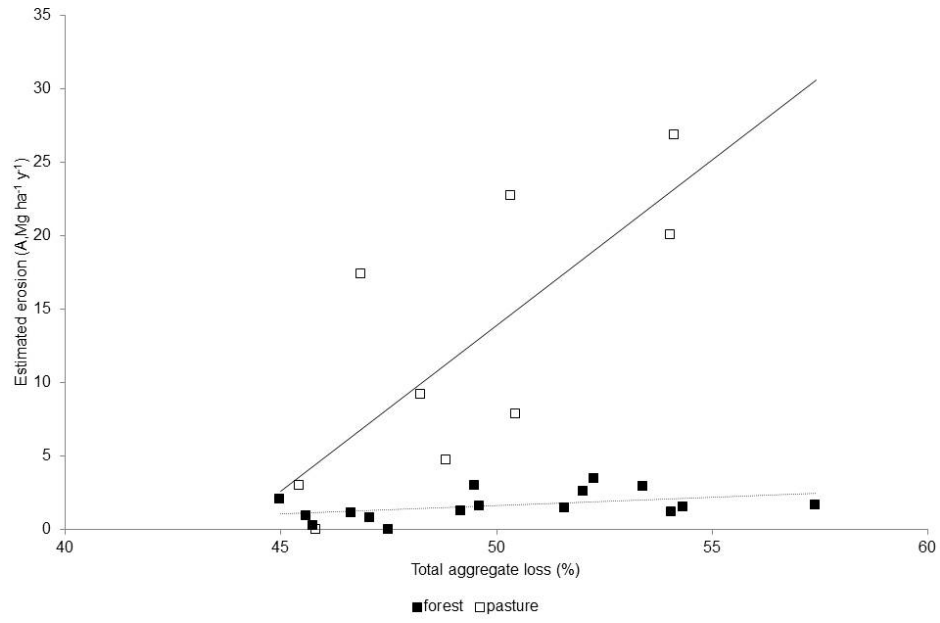


Fig. 5.

C261

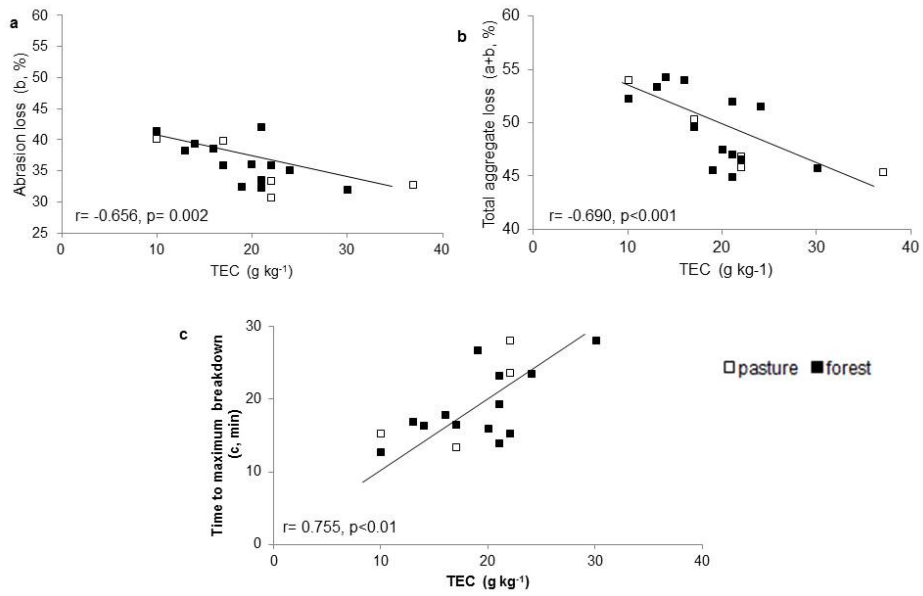


Fig. 6.

C262

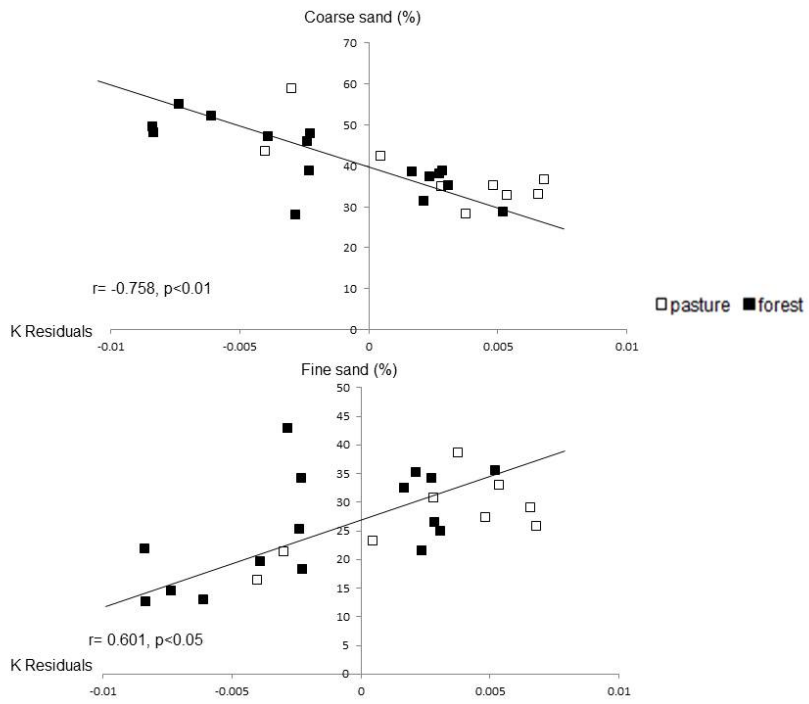


Fig. 7.

C263

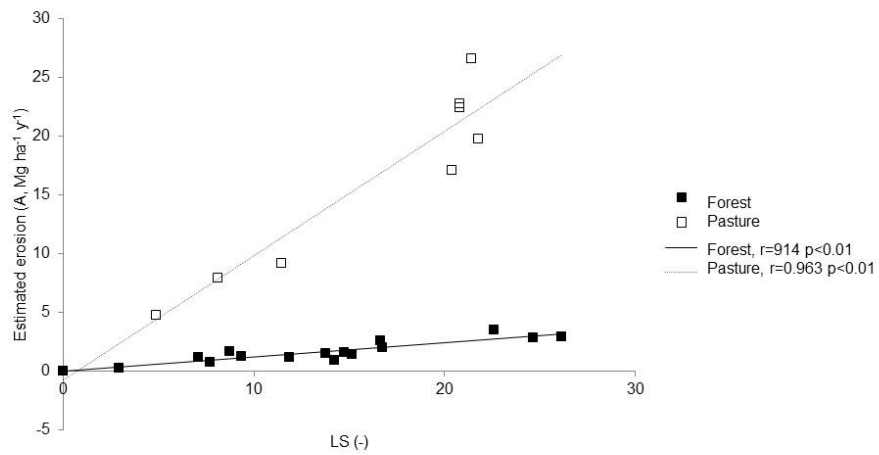


Fig. 8.

C264