

Interactive
Comment

Interactive comment on “Assessing the determinants of rill erosion on roadcuts in the south eastern region of South Africa” by K. E. Seutloali and H. R. Beckedahl

K. E. Seutloali and H. R. Beckedahl

kseutloali@yahoo.com

Received and published: 11 April 2015

Reviewer’s Comment 1 The title is too general and ambitious

Authors’ Response 1 The title has now been revised to read as “Understanding the factors influencing rill erosion on roadcuts in the south eastern region of South Africa”

Reviewer’s Comment 2 This manuscript could be accepted if the data obtained are compared with results from other geographical areas both South Africa and the world, other variables of interest are included (for example, soil characteristics of roadcuts); and the novelty of study is justified with respect to known and published data

Full Screen / Esc

Printer-friendly Version

Interactive Discussion

Discussion Paper



Authors' Response 2 We have now justified the novelty of this study with respect to other known and published data. See Page 2 -3, L 48 – 69. We have now included information on the soil characteristics of the studied roadcuts as suggested by the reviewer. For details see Table 3 and 4. Moreover, the data obtained has been compared to that from other studies. See Page 10, L273 - 279; Page 11, L305 – 308; Page 12, L 332 – 333; and page 12, L 343 – 353.

Please also note the supplement to this comment:

<http://www.solid-earth-discuss.net/7/C405/2015/sed-7-C405-2015-supplement.pdf>

Interactive comment on Solid Earth Discuss., 7, 393, 2015.

SED

7, C405–C410, 2015

Interactive
Comment

Full Screen / Esc

Printer-friendly Version

Interactive Discussion

Discussion Paper

C406



Interactive
Comment

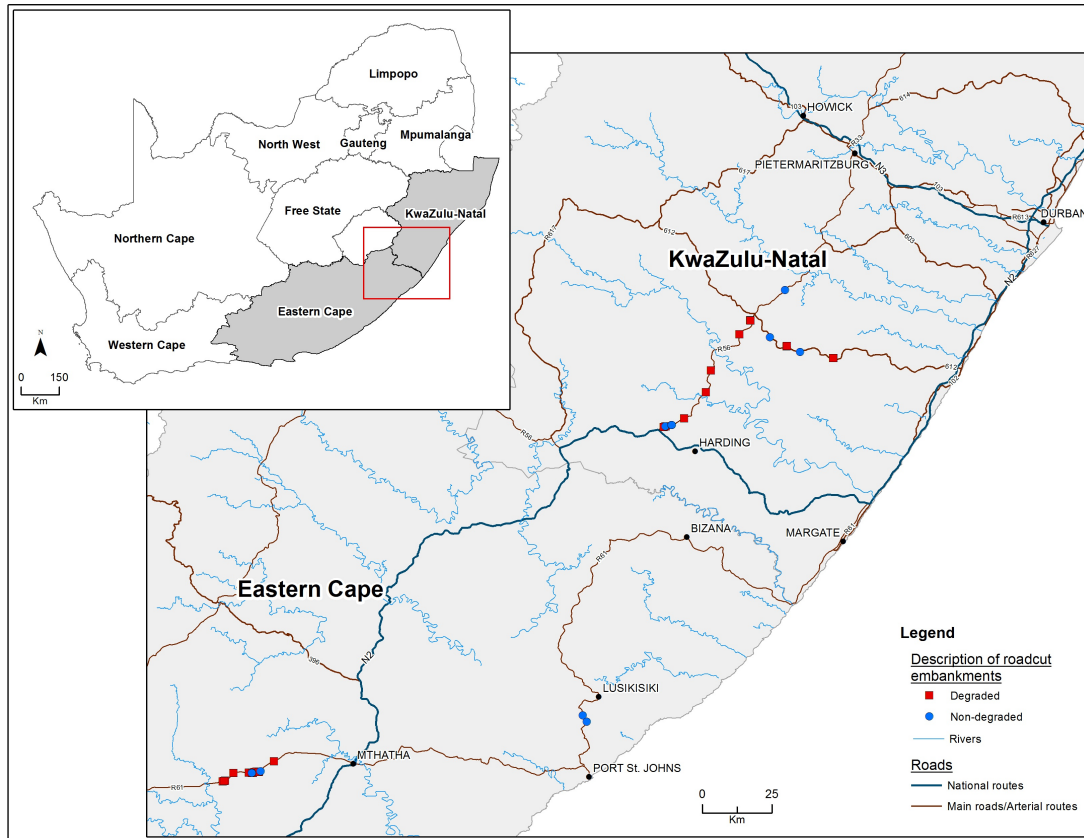


Fig. 1.

Full Screen / Esc

Printer-friendly Version

Interactive Discussion

Discussion Paper



Interactive
Comment

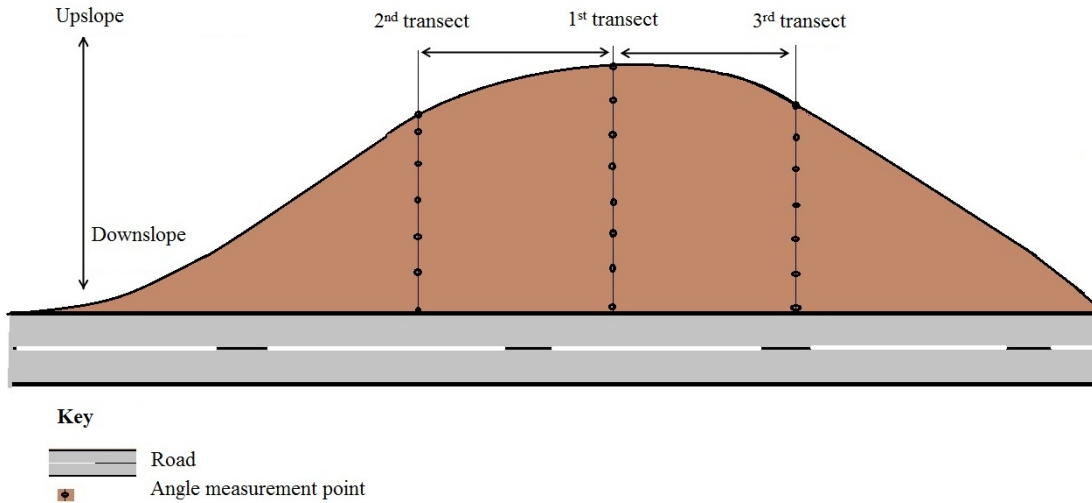


Fig. 2.

Full Screen / Esc

Printer-friendly Version

Interactive Discussion

Discussion Paper

SED

7, C405–C410, 2015

Interactive
Comment

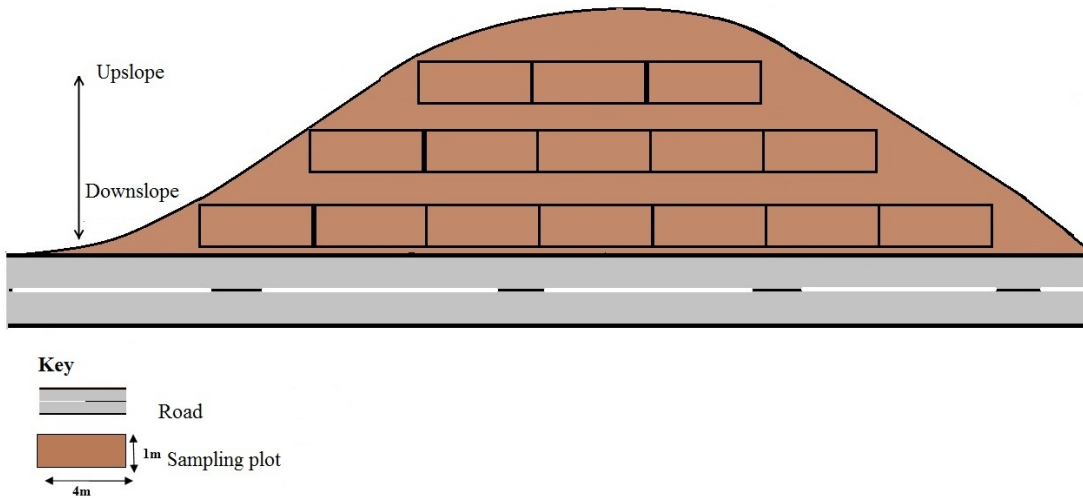


Fig. 3.

Full Screen / Esc

Printer-friendly Version

Interactive Discussion

Discussion Paper

Interactive
Comment

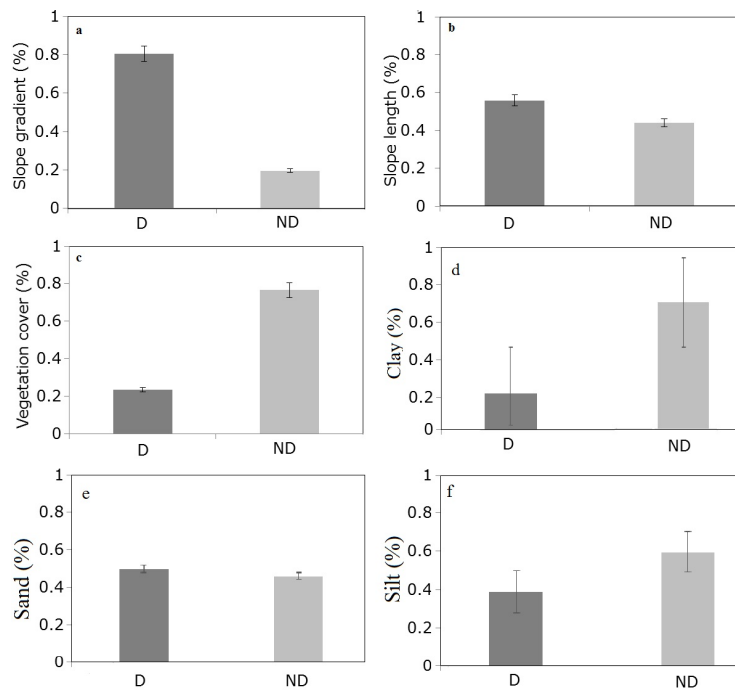


Fig. 4.

Full Screen / Esc

Printer-friendly Version

Interactive Discussion

Discussion Paper

