

Interactive
Comment

Interactive comment on “Effects of land use changes and conservation measures on land degradation under a Mediterranean climate” by Y. Mohawesh et al.

Y. Mohawesh et al.

fmziadat@hotmail.com

Received and published: 17 April 2015

Dear Saskia, Thank you very much for reviewing the manuscript. We did our best to respond to all comments, which improved the manuscript significantly. Please find specific responses to your comments in the attached file. The changes made to the manuscript are also highlighted in the attached revised manuscript for your easy reference. Hope you will find the revised version an improvement and would be acceptable for publications. We remain under your disposal for further revision.

Thank you and best regards, The Authors

Full Screen / Esc

Printer-friendly Version

Interactive Discussion

Discussion Paper



Please also note the supplement to this comment:

<http://www.solid-earth-discuss.net/7/C437/2015/sed-7-C437-2015-supplement.pdf>

Interactive comment on Solid Earth Discuss., 7, 115, 2015.

SED

7, C437–C439, 2015

Interactive
Comment

Full Screen / Esc

Printer-friendly Version

Interactive Discussion

Discussion Paper

C438



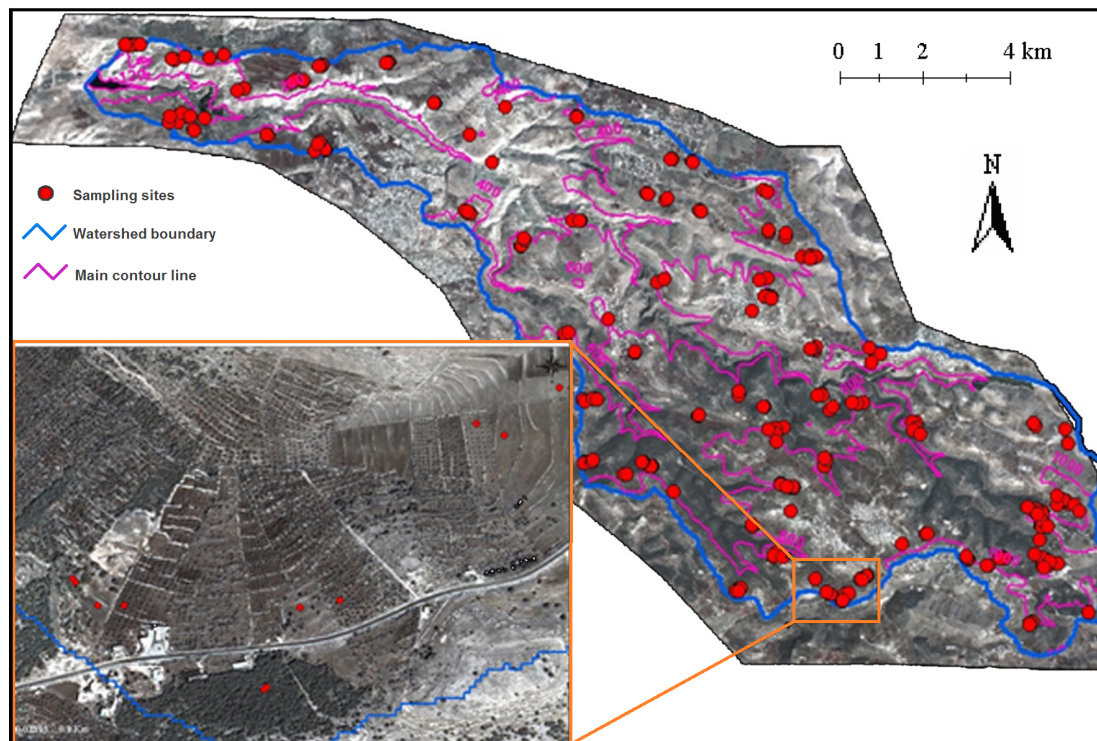


Fig. 1. figure 2

Full Screen / Esc

Printer-friendly Version

Interactive Discussion

Discussion Paper

