

Interactive comment on “Active faulting, 3-D basin architecture and Plio-Quaternary structural evolution of extensional basins: a 4-D perspective on the central Apennine chain evolution, Italy” by Stefano Gori et al.

Stefano Gori et al.

stefano.gori@ingv.it

Received and published: 15 September 2016

Dear Editor, please find attached a .pdf file and three figures as reply to the comments made by Civico and co-authors to our manuscript in open discussion.

Best Regards, Stefano Gori, on behalf of all of the authors of the submitted manuscript.

Please also note the supplement to this comment:

<http://www.solid-earth-discuss.net/se-2016-103/se-2016-103-AC1-supplement.pdf>

Printer-friendly version

Discussion paper



[Printer-friendly version](#)

[Discussion paper](#)



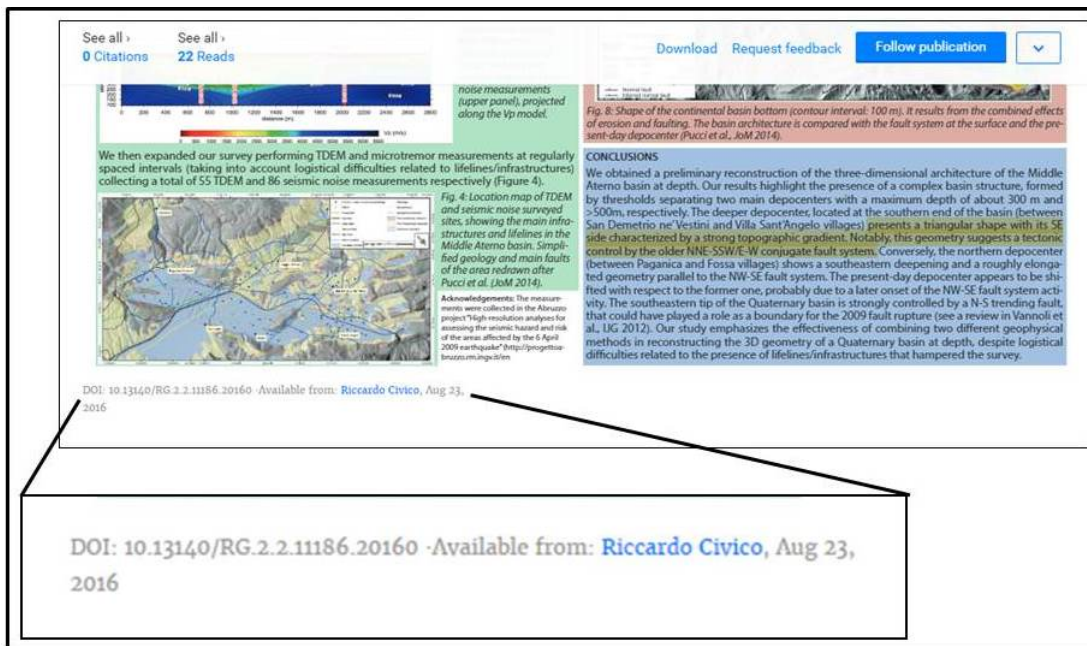


Fig. 1.

Printer-friendly version

Discussion paper



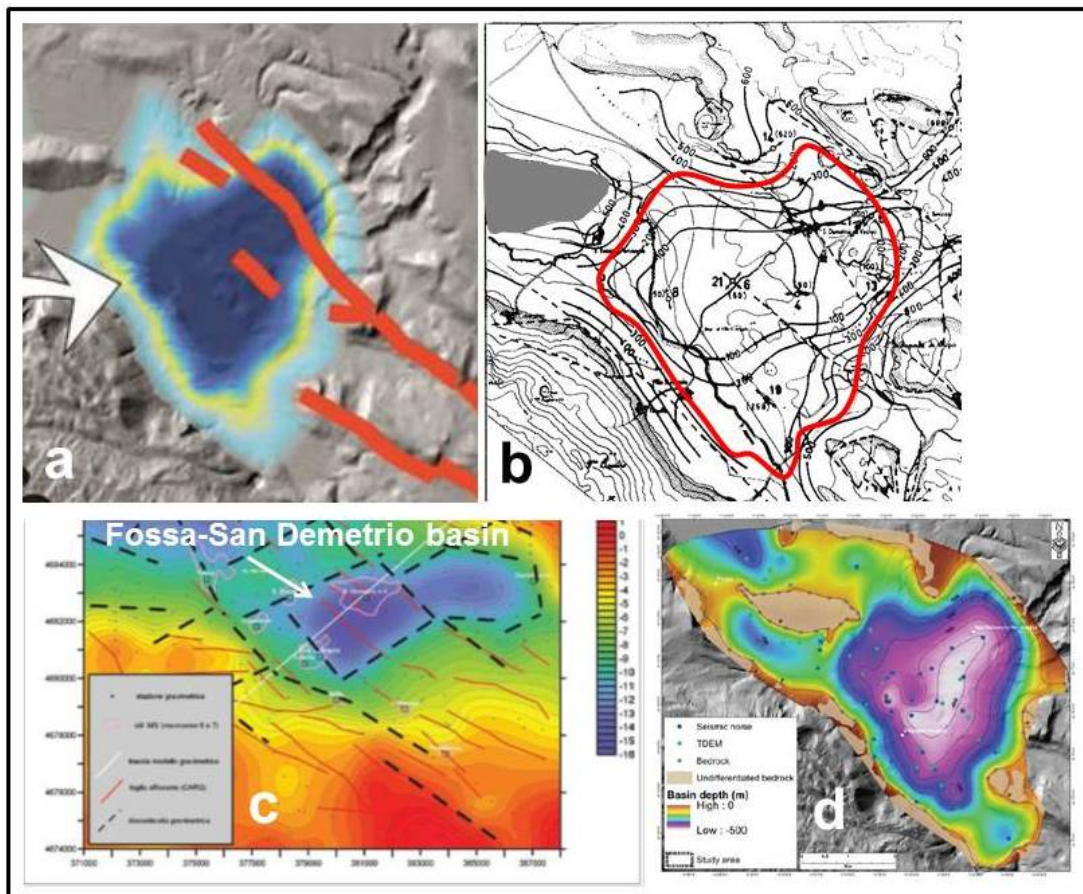


Fig. 2.

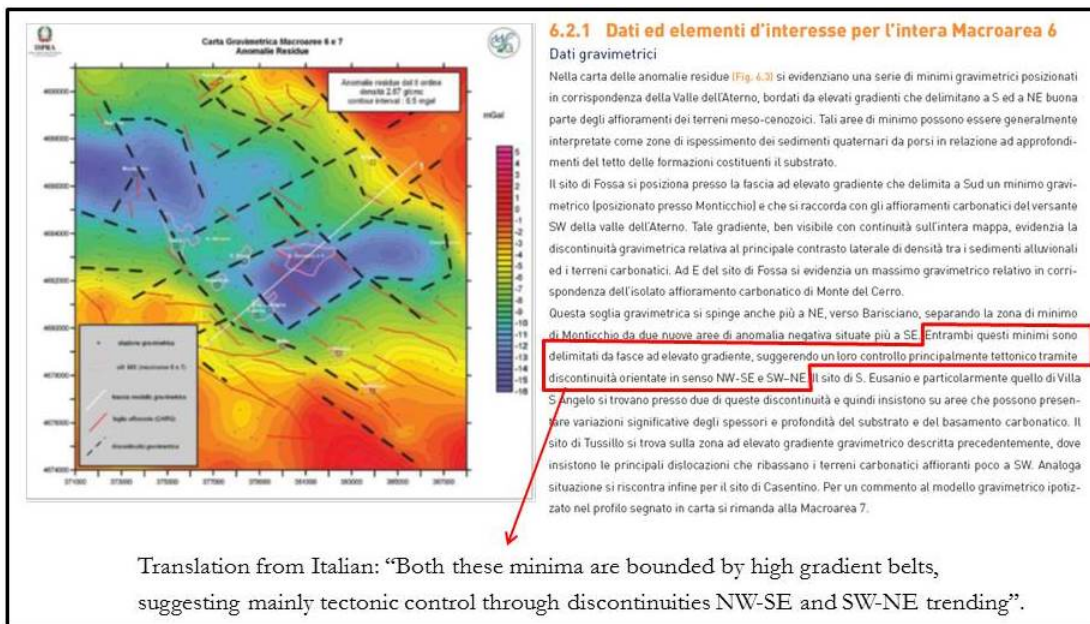


Fig. 3.

Printer-friendly version

Discussion paper

