

Application of a modified distributed-dynamic erosion and sediment yield model in a typical watershed of hilly and gully region, Chinese Loess Plateau

Lei Wu^{1,2,3}, Xia Liu⁴, Xiaoyi Ma^{1,3}

¹College of Water Resources and Architectural Engineering, Northwest A&F University, Yangling, 712100, P.R. China

²State Key Laboratory of Soil Erosion and Dryland Farming on the Loess Plateau, Northwest A&F University, Yangling, 712100, P.R. China

³Key Laboratory of Agricultural Soil and Water Engineering in Arid and Semiarid Areas of Ministry of Education, Northwest A&F University, Yangling, 712100, P.R. China

⁴Construction Department, Northwest A&F University, Yangling, 712100, P.R. China

Correspondence to: L. Wu (lwu@nwsuaf.edu.cn)

Abstract. Soil erosion not only results in the destruction of land resources and the decline of soil fertility, but also makes river channel sedimentation. In order to explore spatiotemporal evolution of erosion and sediment yield before and after returning farmland in a typical watershed of hilly and gully region, Chinese Loess Plateau, a distributed, dynamic model of sediment yield based on the Chinese Soil Loss equation (CSLE) was established and modified to assess effects of hydrological factors and human activities on soil erosion and sediment yield from 1995 to 2013. Results indicate that: 1) the modified model has characteristics of simple algorithm, high accuracy, wide practicability and easy expansion, and can be applied to predict erosion and sediment yield of the hilly and gully region, Chinese Loess Plateau; 2) soil erosion gradations are closely related to spatial distributions of rainfall erosivity and land use patterns, the current soil and water conservation projects are not very ideal for high rainfall intensity; 3) the average sediment transport modulus before and after model modification in recent 5 years (in addition to 2013) is 4574.62 Mg/km² and 1696.1 Mg/km² respectively, it has decreased by about 35.4% and 78.2% comparing with the early governance (1995-1998). However, in July 2013 the once-in-a-century storm is the most important factor causing the emergence of maximum value. Results may provide effective and scientific basis for soil and water conservation planning and ecological management of the hilly and gully region, Chinese Loess Plateau.

Key words: Soil erosion; Sediment yield; Dynamic model; Returning farmland; Spatio-temporal evolution

1. Introduction

Soil erosion is one of the main environmental disasters that restrict the survival and development of human beings (Ongley et al., 2010), it will bring disastrous land degradation and affect regular land development (Sun et al., 2012). Soil erosion of the Loess Plateau in China is serious (Miao et al., 2010), the annual average soil loss amount in this region is 1600 Gg, and the annual erosion amount of surface soil in most serious areas reaches 20 mm or more (Rudi & Victor, 2007). The recent

studies on the Loess Plateau are mainly focused on the water erosion control in the water-wind crisscrossed erosion region, soil quality indicators in relation to land use and topography, overland flow on abandoned slopes, effects of long-term fertiliser applications on soil organic carbon and hydraulic properties, soil water content, interrill erosion on unpaved roads, and temporal variations of flow-sediment relationships (Zhao et al., 2015; Zhao et al., 2016a; Yu et al., 2016; Shi et al., 2016; Li et al., 2016a, 2016b; Cao et al., 2015; Yu et al., 2015; Gao et al., 2016). But there is little research on the dynamic simulation of soil erosion and sediment yield at watershed scales.

Majiagou River watershed belongs to a first grade tributary of the Yanhe River basin, it is located in the typical hilly and gully region of the Loess Plateau (Li, 2009), its topography and geomorphology have very strong representative, it is one of the most serious soil and water loss regions in the middle reaches of the Yellow River (Fu et al., 2010; Jia et al., 2014).

Before the implementation of China's returning farmland policy to forest/grass in 1997 (Zhao et al. 2016b), the soil erosion area in Majiagou watershed reached 72.31 km², which accounts for 98% of the total watershed area, the soil erosion modulus was up to 8740 Mg/(km²•a), it belongs to the serious soil erosion region (Dang et al., 2013); after the implementation of returning farmland to forest/grass project for nearly 10 years, the soil erosion modulus of the Majiagou River watershed decreased to 5700 Mg/(km²•a) in 2008 (Wu et al., 2010). Therefore, it is necessary to study spatio-temporal characteristics of erosion and sediment yield in the Majiagou River watershed, and results may provide scientific references for optimized utilization of the land resource and reasonable formulation of soil and water conservation measures.

Under the international background of serious soil loss, the researches on monitoring, model and the most advanced technology have developed rapidly in the world (Chen & Cui 2006; Cui et al., 2013; Borrelli et al., 2015). In the field of experimental study, the earliest soil erosion quantitative observation occurred in 1912 (Meyer, 1984), the related scholars in the world carried out long-term experimental studies in the runoff plot under rainfall and natural status (Xia et al., 1998; Zhou et al., 2000; Yu et al., 2009; Chen et al., 2010), which provides the scientific basis for the study of soil erosion and the theoretical foundation for the factor analysis model. In the field of model study, based on the path process and the simulation method of the model, soil erosion model may be divided into factor analysis model (empirical statistical model) and physical process model (Zhou & Shangguan, 2004; Cao et al., 2015). The factor analysis model is simple and intuitive, and can be modified according to the specific application area. Its typical representative is the USLE and its modified form (Wischmeier & Smith, 1965, 1978; Renard et al., 1997; Xie et al., 2003; Wang & Lu 2004; Sadeghi & Mizuyama, 2007), which have been widely used in the world (Liu et al., 2001, 2002; Fu et al., 2001; Yin & Chen, 1989; Wang et al., 1996; Cheng et al., 2009; Arekhi et al., 2012; Ligonja & Shrestha 2015). In the field of physical model, the physical model of soil erosion will be divided into four main processes including precipitation sputtering, migration, runoff dispersing, and transport (Wang et al., 2008). Meyer established the theory of shallow gully erosion in 1972 (Meyer, 1984), Foster established soil erosion model based on physical process in 1980 (Foster, 1980), the United States Department of Agriculture introduced the WEPP model

in 1995. At the same time in Europe and Australia there are some classic physical process models, such as the Holland LISEM model, the British EUROSEM model and the Australian GUEST model. Since 1980, Chinese scholars have successively constructed the soil erosion prediction model with local characteristics (Mou & Meng, 1983; Yang et al., 2008; Tang, 1996; Cai et al., 1996; Fan, 1985; Yang et al., 2007). With the development of technology, distributed model and dynamic model have been applied gradually. In the field of distributed model, the typical soil erosion distributed models mainly include SHE model, IHDM model and EUROSEM model (Wang et al., 2003). In particular, some of the agricultural non point source pollution evaluation models such as SWAT and AGNPS also contains soil erosion evaluation module (Zhang et al., 2007; Li et al., 2009). Dynamic models for soil erosion of small-scale watershed system also have a wide range of application and value (Tang & Chen, 1997; Gao & Lei, 2010; Liao et al., 2012), the representative dynamic model is KINEROS model which simulates sediment process during storm event (Singh et al., 1999). In recent years, the researches of soil erosion with the advanced technology such as GIS and RS, BP neural network, genetic algorithm and fruit fly algorithm have developed rapidly great progress (Zhao et al., 2004; Dai et al., 2008; Ochoa-Cueva et al., 2015). They can realize real-time simulation with high efficiency and accuracy, the occurrence prediction of soil erosion, and the quantitative assessment of temporal and spatial evolutions (Caro & Legarda, 2013). In short, with the development and popularization of computer technology, GIS/RS technology and information technology, the research on the distribution of watershed sediment yield has become an inevitable trend, and the dynamic simulation has become necessary means to track temporal variations of soil erosion (Yao & Xiao, 2012).

However, the existing distributed dynamic model takes event based rainfall process as the research object, there is very little involved in inter-annual variability of erosion and sediment yield, there is still less scholar who in-depth considers effects of relationships between upstream and downstream within a watershed on dynamic changes of erosion and sediment yield. Therefore, the objectives of this study are to establish and modify a yearly distributed model of watershed erosion and sediment yield in the Majiagou River watershed, and to evaluate spatiotemporal evolutions of soil erosion and sediment yield before and after returning farmland project. Results may provide reliable scientific basis for the dynamic simulation of multi-scale watershed erosion and sediment yield, land use planning and watershed management.

2. Material and Methods

2.1 Study area

Majiagou river, which is located in the western Ansai County of Yanan city, Northern Shaanxi Province, is one of the first grade tributaries of the Yanhe River (Fig.1). It flows into the Yanhe river in Ansai County from the northwest to the southeast, the main channel is about 17.4 km in length, the average gully slope is about 6.5%. The watershed, with a total

catchment area of 73.83 km², is situated on the typical hilly and gully region of the Loess Plateau (109°9'30"~109°18'59"E and 36°49'42"~36°56'42"N). The watershed belongs to a warm-temperature and semi-arid continental monsoon climate, the evaporation capacity is greater than 1000 mm, the annual average temperature is 6-11°C, the annual average precipitation is about 500 mm, the precipitation in 6-10 months accounts for about 80% of the total annual precipitation. The precipitation form is mainly heavy rainstorm with characteristics of high intensity and short duration, it easily produces a large number of surface runoff by mechanism for runoff yield under excess infiltration, and then leads to hyperconcentrated flood disaster under the action of water erosion.

2.2 Environmental database

The parameters included in this study include digital elevation model (DEM), daily precipitation data, runoff, soil properties, land use types (Figs. 2 and 3; Table 1).

2.3 Dynamic model of erosion and sediment yield

Soil loss is the comprehensive results of various natural factors and human factors (Fu et al., 2014; Tian et al., 2016). Climate, soil, topography and vegetation are the natural factors affecting soil loss (Zhao et al., 2013); the irrational land use, the destruction of forest and grass, excessive reclamation and overgrazing, cultivation on steep slopes, mining road and unreasonable waste soil and residue etc. are the main human factors affecting soil loss (Chen & Lv, 2012). Based on the USLE/RUSLE equations, the Chinese soil loss equation (CSLE) model put forward by Liu Baoyuan was selected and applied to quantitatively and dynamically evaluate soil erosion of the Majiagou River watershed. The basic expression is as follows,

$$Q = A \times R \times K \times L \times S \times B \times E \times T \quad (1)$$

where Q is the annual average soil erosion rate, (t/hm²·a); A is the catchment area, hm²; R is the rainfall erosivity factor, (MJ·mm/hm²·h·a); K is the soil erodibility factor, (t·hm²·h/hm²·MJ·mm); L is the slope length factor; S is the slope gradient factor; B is the biological measure factor (equivalent to factor C of the RUSLE equation); E is the engineering measure factor; T is the tillage measure factor; L , S , B , E and T are all dimensionless.

Because not all eroded soil is actually delivered to the basin outlet, based on the equation (1) and the sediment delivery ratio factor, the annual average sediment yield can be estimated by the Eq. (2)

$$Q_s = A \times R \times K \times L \times S \times B \times E \times T \times \lambda \quad (2)$$

However, the Eq. (2) is the multi-year average sediment yield amount, it is not a dynamic changing expression. Furthermore, the dynamic-continuous modeling studies on the processes of sediment yield are very critical and necessary for accurately estimating annual changing trends of sediment (Gessesse et al., 2015). Rainfall runoff and human activity are two important

factors affecting erosion and sediment yield (Mu et al., 2012; Liu et al., 2014; Lieskovský & Kenderessy 2014). According to the related study results (Long et al., 2008; Liu, 2009; Miao et al., 2012), the rainfall erosivity factor and the sediment delivery ratio factor affected by hydrological elements were designed into the dynamic hydrological factor; the biological measures, engineering measures, tillage measures and the sediment delivery ratio factor affected by human activities were designed the dynamic land management factor, so the dynamic equation of sediment yield suitable for the hilly and gully region of Loess Plateau was put forward as follows:

$$Q_{s,i} = A \times K \times LS \times (R_i \times \lambda_{q,i}) \times (B_i \times E_i \times T_i \times \lambda_{m,i}) \quad (3)$$

where subscript i represents the i -th year, Supposing that the factor λ_i can be divided approximately into the product of $\lambda_{q,i}$ related only to hydrological conditions and $\lambda_{m,i}$ related only to land management measures.

Impacts of hydrological elements on sediment transport are mainly manifested in the moving action of sediment from erosion source to the river course by rainfall runoff (Mu et al., 2012). $\lambda_{q,i}$ can be estimated by the sediment transport capacity that is widely used in hillslope and fluvial geomorphology (Prosser & ustomji 2000). According to the definition for $\lambda_{q,i}$ and general situation of the study area, $\lambda_{q,i}$ can be supposed as follows: The widely used equation is:

$$\frac{\lambda_{q,i}}{\lambda_q} = \frac{TC_i}{TC} = \frac{k \times q_i^a \times s^b}{k \times q^a \times s^b} = \left(\frac{q_i}{q} \right)^{1.45} \quad (4)$$

where TC is the average sediment transport capacity per unit width of slope (kg m^{-3}); q is the average runoff amount per unit width (m^{-3}); k , a and b are coefficients. Those coefficients and the surface gradient factor S are constants when there are no changes in underling surfaces of runoff.

Impacts of human activities on sediment transport are mainly demonstrated in water and sediment reduction effects by all kinds of water conservation measures (Schilling et al., 2011; Sarma et al., 2015). Under the annual changing conditions of $\lambda_{m,i}$, B , E and T , the dynamic land management factor was introduced and defined as,

$$\eta_i = \frac{B_i \times E_i \times T_i \times \lambda_{m,i}}{B \times E \times T \times \lambda_m} \quad (5)$$

In order to quantitatively study impacts of human land management activities on the sediment transport process, according to Xu et al. (2012) research results of 1956-2009 runoff and sediment characteristics in the Yanhe River watershed, the year of 1956-1969 is a sporadic governance stage with little intervention of human activities, the intervention is only 0.9-3.9% and fluctuations of runoff and sediment are mainly caused by fluctuations of rainfall; after this stage, human land management activities gradually become the main driving force for changes of runoff and sediment, soil and water conservation are the main factors leading to reduction of runoff and sediment (Gao et al., 2010; Li et al., 2011). So this study will take the year of 1956-1969 as the base period, and the years after the 1970s will be defined as the governance period with the gradually

increased impact of human activities (Wang et al., 2015). Based on the related literatures (Wang & Fan, 2002), respectively, the fitting relationship expression ($R^2=0.912$) of runoff and sediment in Ganguyi hydrological station in 1954-1969 was taken as the denominator, and the fitting relationship expression ($R^2=0.857$) of runoff and sediment in 1954-1989 as the numerator, then the ratio of sediment during the governance period and the base period was defined as the dynamic influencing factor of human activities reflecting effects of human land management activities on yearly changes of the watershed sediment transport, the expression is,

$$\eta_i = \frac{y_{g,i}}{y_{b,i}} = \frac{0.449x_i - 5062.6}{0.4436x_i - 4559.9} \quad (6)$$

where x_i represents the runoff amount in the i -th year (10^4 m^3), n is the number of years, $y_{g,i}$ represents the sediment amount in the i -th year during the governance period (10^4 m^3), $y_{b,i}$ represents the sediment amount in the i -th year during the base period (10^4 m^3)

In summary, the dynamic model of erosion and sediment yield was determined as follows,

$$Q_{s,i} = \eta_i \times \left(\frac{q_i}{q} \right)^{1.45} \times R_i \times \lambda \times A \times K \times LS \times B \times E \times T \quad (7)$$

where $\lambda = \lambda_q \cdot \lambda_m$ represents the average sediment delivery ratio, B , E and T represent the average value of the watershed for many years.

2.4 Determination of model factors

1) The rainfall erosivity factor

Rainfall erosivity refers to the potential capacity of soil erosion caused by rainfall. Scholars in the world have proposed simple algorithms of the rainfall erosivity in different forms, where the half-month rainfall erosivity model shows the seasonal distribution of rainfall erosivity by the period of half month. In this study, a half-month simple algorithm of rainfall erosivity established by Zhang et al. (2003) was used to calculate the monthly and/or annual rainfall erosivity, the half-month algorithm of rainfall erosivity estimated by daily precipitation is as follows:

$$R_i = \alpha \sum_{j=1}^k (P_j)^\beta \quad (8)$$

$$\beta = 0.8363 + \frac{18.144}{P_{d12}} + \frac{24.455}{P_{y12}} \quad (9)$$

$$\alpha = 21.586\beta^{-7.1891} \quad (10)$$

where R_i represents the rainfall erosivity value in i -th half-month period ($\text{MJ}\cdot\text{mm}\cdot\text{hm}^{-2}\cdot\text{h}^{-1}$), k represents the number of days within the half-month period, P_j is the rainfall in the j -th day during the half-month period (the erosive rainfall standard $\geq 12\text{mm}$), P_{d12} represents the average daily rainfall when the daily rainfall $\geq 12\text{mm}$, P_{y12} represents the average annual rainfall when the daily rainfall $\geq 12\text{mm}$. In this algorithm, the half-month division standard is that the first 15 days of each month are used as the former half-month period, and the remaining days of this month as the other half-month period.

According to the above algorithm, the annual dynamic results of R factor in the Majiagou River watershed are determined in Table 2, and spatial distributions of the average annual rainfall erosivity are shown in Figure 4. Table 2 shows that most of the rainfall erosivity values in the hilly and gully region of Loess Plateau are below $2000 \text{ MJ}\cdot\text{mm}/\text{hm}^2\cdot\text{h}\cdot\text{a}$, which are consistent with the results of relevant scholars, so the algorithm and the calculation results are scientific and reliable. However, Yan'an suffered a once-in-a-century storm attack in July 2013, which is the key reason for abnormally large rainfall erosivity values of the Majiagou River watershed in 2013.

2) Soil erodibility factor

Soil erodibility is used to evaluate properties whether the soil is susceptible to erosion, it embodies the sensitivity of the soil to the separation and handling of erosion (Lu et al., 2011). The modified method presented by Zhang et al. (2007) was applied to calculate the factor K values, the formula is:

$$K = 0.74488K_n - 0.03336 \quad (11)$$

$$K_n = [2.1 \times 10^{-4} M^{1.14} (12 - OM) + 3.25(SSC - 2) + 2.5(PL - 3)] / 100 \quad (12)$$

where M = Particle mass fraction of (0.002~0.1mm) \times (particle mass fraction of (>0.002~0.05mm) + particle mass fraction of (>0.05~2mm)); OM is the soil organic matter content, g/kg; SSC is the structural coefficient; PL is the permeability level.

Based on soil properties of in the study area by soil survey results, the average K value of soil erodibility in the watershed was calculated as $0.0542 \text{ Mg}\cdot\text{h}\cdot\text{MJ}^{-1}\cdot\text{mm}^{-1}$, which is close to the research results by Li & Zheng (2012) in the Yanhe River basin. The spatial distribution map of soil erodibility factor in the Majiagou River watershed was also generated with the help of GIS technology (Figure 4).

3) Topography factor

Topography is an important factor affecting soil erosion. LS factor reflects the contribution degree of terrain factors to soil erosion, it can be divided into slope length factor and slope gradient factor. Many scholars have established empirical formulas used for quantitative analysis according to the standard definition and influence mechanism of LS factor (Wang, 2007). Through comprehensive comparison analysis, the slope length factor (L) in this study was estimated by the below equation,

$$L = \left(\frac{\lambda}{22.13}\right)^\alpha \quad (13)$$

$$\alpha = \frac{\beta}{\beta + 1} \quad (14)$$

$$\beta = \left(\frac{\sin \theta}{0.0896}\right) / [3.0(\sin \theta)^{0.8} + 0.56] \quad (15)$$

where λ is the horizontal slope length; α is the slope length index; θ is the slope gradient ($^\circ$).

- 5 The slope gradient factor (S) in this study was calculated using piecewise method, the gentle slope used the formula proposed by McCool et al. (1987), and the steep slope adopted the formula proposed by Liu et al. (2010), the specific expressions are as follows,

$$\begin{aligned} S &= 10.8 \sin \theta + 0.03 & \theta < 5^\circ \\ S &= 16.8 \sin \theta - 0.05 & 5^\circ \leq \theta \leq 10^\circ \\ S &= 21.9 \sin \theta - 0.96 & \theta > 10^\circ \end{aligned} \quad (16)$$

where θ is the slope gradient ($^\circ$).

- 10 Based on the above algorithm, the multi-year average LS value from the Majiagou River watershed is determined as 12.9, and the spatial distribution of LS factor in the study area is shown in Figure 4.

4) BET factor

- Biological measure factor (B factor) refers to the ratio of soil erosion amount between the standard plot for growing crops and for continuous abandonment within a certain time under the same conditions (Wischmeier & Smith, 1965), its value changes between 0 and 1. Soil and water conservation engineering measure factor (E factor) is defined as the ratio of the soil erosion amount between engineering measures and non engineering measures (Qin, 2013). Tillage measure factor (T factor) is the ratio of the soil erosion amount between the certain tillage farmland and the continuous relaxation bare land under the same conditions, its value is also between 0 and 1 (Guo et al., 2013).

- 15 Considering the synchronization of human activities on underlying surface conditions between the Majiagou River watershed and the Yanhe River basin, based on the related research results of B , E and T factors in the Loess hilly area (Xie, 2008; Zhang et al., 2012; Qin, 2013), the average B , E and T values of the Majiagou River watershed for many years were in turn assigned to 0.1562, 0.497 and 0.712. Besides, the spatial distribution of the average BET factor for many years is shown in Figure 4.

5) The sediment delivery ratio (SDR)

- 25 Reference to systematic research results of soil erosion in the Loess Plateau (Jing et al., 2005), there are different degrees of fluctuations for the annual SDR values of the Majiagou River watershed, the average value is around 0.9. Furthermore, considering the research results of the Yanhe River basin by Zhu et al. (2007), a SDR value of 0.92 for many years was

determined as the average *SDR* value of the Majiagou River watershed.

3. Results and Discussion

3.1 Validation of erosion and sediment yield

5 Considering very similar climate and underlying surface conditions, the soil erosion modulus in the study area has a certain comparability with the Yanhe River watershed, the previous research results of Yanhe River watershed can be used to verify this results. According to Li & Zheng (2012) dynamic simulation results of soil erosion in the Yanhe River watershed from 2001 to 2010, the annual average erosion modulus of Yanhe River watershed is 5812.28 t/(km².a), it has little difference with the average simulated value of 6307.86t/ (km².a) in the Majiagou River watershed from 1995 to 2012, the relative error is comparatively small; the annual erosion modulus of the Majiagou River watershed in 2008 alone is 2485.46 t/(km².a), the corresponding simulated value is 2278.2 t/(km².a), the relative error is 8.34%; the above results demonstrate that the dynamic erosion and sediment yield model has scientific rationality and good reliability, this study results can be used for adsorbed NPS pollution load estimation.

10 In addition, the previous research results of sediment variations in Ganguyi hydrological station from 1961 to 2008 (Ren et al., 2012) and the simulation results of sediment yield in this study were also comparatively confirmed that the sediment yield both showed a decreasing trend although there were fluctuations of different degrees in individual years (Fig. 5), it indicates that the overall changing trends of sediment yield in the study area are consistent with the background of returning farmland policy (Zhao et al., 2013), the current simulation accuracy basically meets the requirements of changing tendency evaluation. However, it can also be seen from Fig. 5 that the model largely fails for the individual events especially after 2006 when the simulated values are distinctly different from the observed values. The main reason can roughly be summed up that the sediment transport process in the established model may not clearly reflect spatiotemporal variations of the watershed underlying surface, especially for the physically-based complex sediment yield relationship between the upper and lower reaches of the watershed after returning farmland.

Therefore, it is necessary to modify the above established model, the influencing factor considering relationships the upper and lower reaches of the watershed was introduced to further improve the accuracy of the established sediment model.

25 According to the existing research results (Xie 2012; Xie & Li 2012), Eq. (7) can be changed into the following formula,

$$Q_{s,i} = \frac{Q_{w,i}}{Q_i - Q_{b,i}} \times \eta_i \times \left(\frac{q_i}{q} \right)^{1.45} \times R_i \times \lambda \times A \times K \times LS \times B \times E \times T \quad (17)$$

where $Q_{w,i}$ is the annual saturated water when the saturated sediment transport amount is the observed sediment transport amount in a hydrological station, $Q_{b,i}$ is the annual base flow, Q_i is the observed annual runoff amount.

After modification, for Ganguyi hydrological station, the simulated value of the annual average sediment yield modulus from 1995 to 2012 is 5803.23 t/ (km².a) and 4510.66 t/ (km².a) before and after the modification, the observed value in Ganguyi hydrological station of the Yanhe River watershed is 3411.53 t/(km².a), the relative error of the improved model decreases by 30-40% (Fig. 6). For Ansai and Zaoyuan hydrological station, the simulation results also improved a lot.

5

3.2 Spatiotemporal evolutions of soil erosion gradations

Figure 7 shows spatial distribution of soil erosion gradations of the Majiagou River watershed in 1995 and 2010. The annual average soil erosion modulus is 6307.86 t/ (km².a), the soil erosion of the Majiagou River watershed belongs to intensive erosion based on standards for classification and gradation of soil erosion (SL 190-2007), it confirms the grim diagnosis of current situation of soil and water loss in the study area, it also indicates that it is vigorously necessary for protection and management of soil and water resources in the hilly and gully region.

10

Although the overall spatial distribution patterns of soil erosion modulus in two typical years of 1995 and 2010 are generally the same, there is a little different for the gradation distribution of soil erosion (Table 3). Compared with 1995, the occurrence area of micro and mild erosion of the Majiagou River watershed in 2010 decreased slightly, the reducing area accounts for 8.48% of the watershed area. However, the soil erosion area of moderate and above moderate erosion in 2010 increased by 8.48% than that in 1995, among them the area of intensive soil erosion increased more obviously and the corresponding increased amplitude was 4.22%, this indicates that spatiotemporal evolutions of soil erosion intensity in the watershed are closely related to temporal and spatial distributions of rainfall intensity, rainfall duration, rainfall amount and land use patterns; meanwhile, the long-duration concentrated rainfall in 2010 results in a little higher erosion intensity than 1995 in easily-eroded sloping farmland, it also shows that the current water and soil conservation measures are not very ideal for high rainfall intensity, and the results potentially emphasize the necessity of further efforts on soil and water conservation measures.

15

20

3.3 Temporal evolutions of sediment yield

Figure 8 shows that the sediment transport amount in the study area has an overall decreasing trend from 1995 to 2012, the average sediment transport modulus before and after model modification in recent 5 years (in addition to 2013) is 4574.62 Mg/km² and 1696.1 Mg/km² respectively, it has decreased by about 35.4% and 78.2% compared with the early governance (1995-1998). Results show that the modified model is more accordant with practical circumstances. For the occurrence of non conventional heavy rainfall in the watershed, the main reasons for the decreasing sediment mainly result from water and soil conservation measures. Since the late 1990s, China has gradually carried out construction projects of returning farmland

25

to forestland and grassland, beautiful mountains and rivers, and soil and water conservation of Yanhe River by World Bank loan in Northern Shaanxi. A lot of targeted soil and water conservation measures were implemented for coping serious soil and water loss situation of the Yanhe River basin, it continues to improve underlying surface conditions and soil erosion disasters. Especially after 2003, the sediment transport in the study area not only has an overall decrease trend, but also the tendency of inter-annual fluctuations is small and the whole sediment transport level is low. It also fully shows that the continuous improvement of underlying surface conditions and the effective implementation of soil and water conservation measures in recent years have significant reduction benefits of water and sediment (Ran et al., 2006).

Soil and nutrient loss in the Loess Plateau is mainly caused by few transient rainstorms (Zhang et al., 2004; Austin et al., 2004). But the serious soil erosion hazards in the study area due to the once-in-a-century storm encountered in 2013 can not reflect the general sediment yield evolutions. Figure 9 shows the monthly erosion dynamics in 2013, it can be seen that the monthly distribution of sediment transport in the basin is very uneven, and the maximum values of runoff and sediment both occurred in July, the sediment transport capacity only in July accounted for 96.18%. The reasons are that the rainfall erosivity value in July accounted for 80.49% of the whole year, and it is 3.11 times more than the average simulation value for many years, a powerful hydraulic erosion force was formed due to the once-in-a-century storm; the corresponding monthly runoff in the basin also accounts for 56.22% of the total annual runoff, it accounts for 76.79% of the multi-year average runoff amount in the Majiagou River watershed; and the corresponding monthly erosion modulus reached 44.5 times more than the average annual erosion modulus. Therefore, the once-in-a-century storm in July 2013 is the most important factor for the maximum sediment yield, it also shows that rainfall plays a very important role on the evolution process of soil erosion under non conventional storm.

The theory analysis of the sediment transport indicates that rainfall and human activity are two main factors affecting dynamic changes of soil erosion (Yao et al., 2011). Rainfall is the promotion factor for erosion evolution, it can affect the formation and development of soil erosion process by splash effects of raindrops and erosion moving of rainfall runoff; The positive human activities are the restraining factors for erosion evolution, they can increase vegetation cover, improve water and soil measures, consolidate soil, weaken soil erosivity, and strengthen effects of the interception and hindrance.

3.4 Spatial evolutions of sediment yield

Figure 10 shows spatial distributions of the sediment transport modulus in the Majiagou River watershed in 1995 and 2010. Due to widely distributed sloping farmland along river banks, bank erosion dominated sediment sources of the Majiagou River watershed, and peak values of the sediment transport modulus also mainly appears on the main river banks of the whole Majiagou watershed from northwest to southeast. Soil erosion spatial distribution map of these two years also suggests that soil erosion significantly reduced due to the large-scale reconstruction of vegetation, and the vegetation cover

increase of the steep slope land is stronger than the gently sloping farmland, which results in changes of watershed sediment distribution pattern. The spatial results of this study are basically consistent with the results of Zhu et al. (2016). In general, Spatial and temporal variations of sediment transport in the watershed are generally related to spatial distribution of land use types, the large spatial variations of sediment transport are also closely associated with spatial changes of topography and soil (Gao et al., 2016).

4. Conclusions

- 1) A distributed-dynamic sediment yield model based on the CSLE equation was verified and modified to investigate impacts of returning farmland on erosion and sediment yield in the Majiagou River watershed from 1995 to 2013. Results indicate that the overall status of the watershed belongs to intensive erosion, the multi-year average soil erosion level before and after modification in the watershed decreased by about 8%. Spatiotemporal evolutions of soil erosion intensity in the watershed are closely related to distributions of rainfall intensity, rainfall amount, and land use patterns.
- 2) The multi-year average sediment yield modulus before and after modification in the Majiagou River watershed was 5803.23 Mg/km² and 4510.66 Mg/km² respectively, the overall annual sediment transport tracked to a decreasing trend from 1995 to 2012. Especially after 2003, the annual sediment transport in the study area was diminishing year after year, and the fluctuation trend is weak and the overall sediment transport level is relatively low, the average sediment transport modulus before and after model modification in recent 5 years (in addition to 2013) is 4574.62 Mg/km² and 1696.1 Mg/km² respectively, it has decreased by about 35.4% and 78.2% compared with the early governance (1995-1998).
- 3) The implementation of large-scale soil and water conservation projects in the late 90's of last century has continuously improved sediment situation of the watershed, but the trend of events is still grim and urgently needs to continue increasing the level of integrated watershed management. In particular, the extreme storm will lead to large fluctuations of sediment transport, for example, the once-in-a-century storm of Yan'an city in July 2013 is the most important factor for the maximum erosion and sediment yield (1983.36×10^4 Mg/km²) of the watershed. Therefore, the current soil and water conservation measures are not very ideal for high rainfall intensity in July 2013, and the results potentially emphasize the necessity of making further efforts on soil and water conservation measures in easily-eroded sloping farmland of the hilly and gully region, Chinese Loess Plateau.

Acknowledgements

This study was supported by the National Natural Science Foundation of China (51309194, 51679206), the Fundamental Research Funds for the Central Universities (2452016120), Special Research Foundation for Young teachers (2452015374),

the open foundation of State Key Laboratory, Institute of Water and Soil Conservation, Chinese Academy of Sciences and Ministry of Water Resources (K318009902-1417), the Doctoral Fund of Ministry of Education of China (20130204120034), the Initial Scientific Research Funds for PhD from Northwest A&F University (2012BSJJ004), the Fundamental Research Funds for the Central Universities (QN2013047).

5 References

- Arekhi, S., Shabani, A., and Rostamizad, G.: Application of the modified universal soil loss equation (MUSLE) in prediction of sediment yield (Case study: Kengir Watershed, Iran). *Arabian Journal of Geosciences*, 5:1259-1267, 2012.
- Austin, A.T., Yahdjian, L., Stark, J.M., Belnap, J., Porporato, A., Norton, U., Ravetta, D.A., and Schaeffer, S.M.: Water pulses and biogeochemical cycles in arid and semiarid ecosystems. *Oecologia*, 141: 221-235, 2004.
- 10 Borrelli, P., Märker, M., and Schütt, B.: Modelling Post-Tree-Harvesting soil erosion and sediment deposition potential in the turano river basin (Italian central Apennine). *Land Degradation and Development*, 26(4): 356-366, 2015.
- Cai, Q.G., Lu, Z.X., and Wang, G.P.: Process model of erosion and sediment yield in a typical small watershed of Loess Hilly and Gully Region. *Acta Geographica Sinica*, 51(2):108-117, 1996.
- Cao, L., Zhang, K., Dai, H., Liang, Y.: Modeling Interrill Erosion on Unpaved Roads in the Loess Plateau of China. *Land*
15 *Degradation and Development*, 26(8): 825-832, 2015.
- Caro, A., Legarda, F., Romero, L., and Olondo, C.: Map on predicted deposition of Cs-137 in Spanish soils from geostatistical analyses. *Journal of Environmental Radioactivity*, 115c(1): 53-59, 2012.
- Cheng, L., Yang, Q.K., Xie, H.X., Wang, C.M., Guo, W.L.: GIS and CSLE based quantitative assessment of soil erosion in Shaanxi, China. *Journal of Soil and Water Conservation*, 23(5):61-66, 2009.
- 20 Chen, T.F., and Cui, P.: Prediction of soil erosion on the embankment slope of Xichang to Panzhihua highway, Sichuan, China. *Journal of Chengdu University of Technology (Science & Technology Edition)*, 33(4):371-375, 2006.
- Chen, Z.F., Guo, H.Z., Shi, D.M., and Tang, X.W.: Experimental study on effect of topographical factors on purple cultivated slopes land soil erosion. *Journal of Soil and Water Conservation*, 24(5): 83-87, 2010.
- Cui, S.F., Pan, Y.H., Wu, Q.Y., Zhang, Z.H., Zhang, B.X., Hao, C.H., and Ren, S.G.: Simulation and prediction of sediment
25 under interval coverage on Lou soil slope. *Journal of Soil and Water Conservation*, 27(5): 7-11, 2013.
- Dai, H.L., Cao, S.L., Geng, X.Y.: CFNN modification and its application in predicting soil erosion on slope land. *Journal of Sichuan University (Engineering Science Edition)*, 40(5):45-50, 2008.
- Dang, X.H., Liu, G.B., Meng, W.W., and Jia, R.Y.: A virtual water-based analysis on the response of water resources to small watershed integrated management. *Yellow River*, 35(3): 55-57, 2013.

- Fan, R.Y.: Calculation equation of soil loss in a small watershed in the middle reaches of the Yellow River. *Soil and Water Conservation in China*, (2):12-18, 1995.
- Foster, G.R., Overcash, M.R., and Davidson, J.M.: Soil erosion modeling: special considerations for nutrient pollution evaluation of field sized area. *Environmental impact of nonpoint source pollution*, pp. 213-240, 1980.
- 5 Fu, S.H., Zhang, W.G., Liu, B.Y., Zhu, Q.J., Wu, J.D., Duan, S.H., and Li, Y.G.: Soil erosion model of small watershed in mountain area of Beijing. *Research of Soil and Water Conservation*, 8(4): 114-120, 2001.
- Fu, Y.L., Zhang, X.P., Chen, F.J., Wan, L., Wu, Y., and Liu, G.B.: Land Use/Cover Pattern Survey under the Background of Grain for Green Policy Implementation in the Loess Hilly-Gully Region-A Case Study of Majiagou Catchment, Ansai County. *Research of Soil and Water Conservation*, 17 (6):81-85, 2010.
- 10 Gao, G., Ma, Y., and Fu, B.: Temporal Variations of Flow-Sediment Relationships in a Highly Erodible Catchment of the Loess Plateau, China. *Land Degradation and Development*, 27 (3): 758-772, 2016. doi:10.1002/ldr.2455.
- Gao, P., Zhang, X.C., Mu, X.M., Wang, F., Li, R., and Zhang, X.P.: Trend and change-point analyses of streamflow and sediment discharge in the Yellow River during 1950-2005. *Hydrological Sciences Journal*, 55(2): 275-285, 2010.
- Gao, P.L., and Lei, T.W.: Dynamic process simulation model for soil erosion of small-scale watershed system. *Transactions of the Chinese Society of Agricultural Engineering*, 26(10): 45-50, 2010.
- 15 Gessesse, B., Bewket, W., and Bräuning, A.: Model-Based Characterization and Monitoring of Runoff and Soil Erosion in Response to Land Use/land Cover Changes in the Modjo Watershed, Ethiopia. *Land Degradation and Development*, 26(7): 711-724, 2015.
- Guo, Q.K., Liu, B.Y., Zhu, S.B., Wang, G.Y., Liu, Y.N., and Wang, A.J.: Soil and water conservation measures in China. *Soil and Water Conservation in China*, (10): 22-26, 2013.
- 20 Jia, L.Z., Gao, J.E., Zhang, Y.X., Zhang, M.J., Wang, X.W., and Li, X.H.: Analysis of Rainstorm Erosion Disaster in Terrace Field in Loess Hilly and Gully Region. *Research of Soil and Water Conservation*, 21(4):7-11, 2014.
- Jing, K., Wang, W.Z., Zheng, F.L.: *Soil erosion and environment in China*. Beijing: Science Press, 1-359, 2005.
- Li, B.B., Zheng, F.L., Long, D.C., Jiang, Z.S.: Spatial distribution of soil erosion intensity in Zhifanggou small watershed based on GIS. *Scientia Geographica Sinica*, 29(1): 105-110, 2009.
- 25 Li, C.Z., Wang, H., Yu, F.L., Yang, A.M., and Yan, D.H.: Impacts of soil and water conservation on runoff and sediment in Yanhe River basin. *Science of Soil and Water Conservation*, 9(1):1-8, 2011.
- Li, D.K.: Vegetation change and its response to climate in the hill and ravine region of the Loess Plateau in Northern Shaanxi. *Acta Botanica Boreali-Occidentalia Sinica*, 29(5):867-873, 2009.
- 30 Li, H.C., Gao, X.D., Zhao, X.N., Wu, P.T., Li, L.S., Ling, Q., and Sun, W.H.: Integrating a mini catchment with mulching for soil water management in a sloping jujube orchard on the semiarid Loess Plateau of China. *Solid Earth*, 7(1), 167-175,

2016b. DOI: <http://dx.doi.org/10.5194/se-7-167-2016>

- Li, L., Gao, X., Wu, P., Zhao, X., Li, H., Ling, Q., and Sun, W.: Soil Water Content and Root Patterns in a Rain-Fed Jujube Plantation Across Stand Ages on the Loess Plateau of China. *Land Degradation and Development*, 2016a, doi:10.1002/ldr.2540.
- 5 Li, T.H., and Zheng, L.N.: Soil erosion changes in the Yanhe watershed from 2001 to 2010 based on RUSLE model. *Journal of Natural Resources*, 27(7): 1164-1175, 2012.
- Liao, Y.S., Zhuo, M.N., Li, D.Q., and Cai, Q.G.: A GIS-based distributed soil erosion and sediment yield model for typical watersheds in hilly loess areas: a case study in Shejiagou catchment. *Journal of Sediment Research*, (1): 7-13, 2012.
- Lieskovský, J., and Kenderessy, P.: Modelling the effect of vegetation cover and different tillage practices on soil erosion in vineyards: A case study in vrábľa (Slovakia) using WATEM/SEDEM. *Land Degradation and Development*, 25(3): 10 288-296, 2014.
- Ligonja, P.J., and Shrestha, R.P.: Soil erosion assessment in kondoa eroded area in Tanzania using universal soil loss equation, geographic information systems and socioeconomic approach. *Land Degradation and Development*, 26(4): 367-379, 2015.
- 15 Liu, B.Y., Bi, X.G., and Fu, S.H.: *Beijing Soil Erosion Equation*. Beijing: Science Press, 52-67, 2010.
- Liu, B.Y., Xie, Y., and Zhang, K.L.: *Soil erosion prediction model*. Beijing: China Science and Technology Press, 2001.
- Liu, B.Y., Zhang, K.L., and Xie, Y.: *An Empirical Soil Loss Equation//Proc.Of 12th ISCO*. Beijing: Tsinghua Press, 143-149, 2002.
- Liu, L.M.: *Simulation study of nonpoint source pollution and its environmental effects on water in Jialing River watershed*. 20 *Doctoral Dissertation of Chongqing University*, 71-90, 2009.
- Liu, X.Y., Yang, S.T., Dang, S.Z., Luo, Y., Li, X.Y., and Zhou, X.: Response of sediment yield to vegetation restoration at a large spatial scale in the Loess Plateau. *SCIENCE CHINA: Technological Sciences*, 57(8): 1482-1489, 2014.
- Long, T.Y., Li, J.C., and Liu, L.M.: Adsorbed nonpoint source pollution load of Jialing River basin. *Environmental Science*, 29(7):1811-1817, 2008.
- 25 Lu, J.Z., Chen, X.L., Li, H., Liu, H., Xiao, J.J., and Yin, J.M.: Soil erosion changes based on GIS/RS and USLE in Poyang lake basin. *Transactions of the CSAE*, 27(2): 337-344, 2011.
- McCool, D., Brown, L.C., Foster, G.R., Mutchler, C.K., and Meyer, L.D.: Revised slope steepness factor for the Universal Soil Loss Equation. *Transaction of the ASAE*, 30(5):1387-1396, 1987.
- Meyer, L.D.: Evolution of the universal soil loss equation. *Journal of Soil and Water Conservation*, 39:99-104, 1984.
- 30 Miao, C.Y., Yang, L., Chen, X.H., and Gao, Y.: The vegetation cover dynamics (1982–2006) in different erosion regions of the Yellow River basin, China. *Land Degradation & Development*, 23(1): 62–71, 2012.

- Miao, C.Y., Ni, J.R., and Borthwick, A.G.L.: Recent changes of water discharge and sediment load in the Yellow River basin, China. *Progress in Physical Geography*, 34(4): 541-561, 2010.
- Mou, J.Z., and Meng, Q.M. Calculation of sediment transport capacity in small and medium river basins in northern part of Shaanxi Province. *Yellow River*, (4): 35-37, 1983.
- 5 Mu, X.M., Zhang, X.Q., Shao, H.B., Gao, P., Wang, F., Jiao, J.Y., and Zhu, J.L.: Dynamic Changes of Sediment Discharge and the Influencing Factors in the Yellow River, China, for the Recent 90 Years. *Clean – Soil, Air, Water*, 40(3), 303–309, 2012.
- Ochoa-Cueva, P., Fries, A., Montesinos, P., Rodríguez-Díaz, J.A., and Boll, J.: Spatial Estimation of Soil Erosion Risk by Land-cover Change in the Andes of Southern Ecuador. *Land Degradation and Development*, 26(6): 565-573, 2015.
- 10 Ongley, E.D., Zhang, X., and Yu, T.: Current status of agricultural and rural nonpoint source pollution assessment in China. *Environmental Pollution*, 158(5):1159-1168, 2010.
- Prosser, I.P., and Rustomji, P.: Sediment transport capacity relations for overland flow. *Progress in Physical Geography*, 24:179-193, 2000.
- Qin, J.J.: Study on the soil erosion prediction in the watershed of Three Gorge Region by CSLE: a case study in Kai County. Chongqing: Master dissertation of Southwest University, 1-96, 2013.
- 15 Ran, D.C., Liu, B., Wang, H., Luo, Q.H., and Ma, Y.: Effect of soil and water conservation measures on flood and sediment reduction in typical tributaries of the middle reaches of the Yellow River. Zhengzhou: The Yellow River Water Conservancy Press, 2006.
- Ren, Z.P., Zhang, G.H., and Yang, Q.K.: Characteristics of runoff and sediment variation in Yanhe River basin in last 50 years. *Journal of China Hydrology*, 32(5): 81-86, 2012.
- 20 Renard, K.G., Foster, G.R., Weesies, G.A., McCool, D.K., and Yoder, D.C.: Predicting soil erosion by water: a guide to conservation planning with the Revised Universal Soil Loss Equation (RUSLE). USDA, Agriculture Handbook, (703):367-384, 1997.
- Rudi, H., and Victor, J.: Suitability of transport equations in modeling soil erosion for a small Loess Plateau catchment. *Engineering Geology*, 91(1): 56-71, 2007.
- 25 Sadeghi, S.H.R., and Mizuyama, T.: Applicability of the Modified Universal Soil Loss Equation for prediction of sediment yield in Khanmirza watershed, Iran. *Hydrological Sciences Journal*, 52(5):1068-1075, 2007.
- Sarma, B., Sarma, A.K., Mahanta, C., and Singh, V.P.: Optimal Ecological Management Practices for Controlling Sediment Yield and Peak Discharge from Hilly Urban Areas. *Journal of Hydrologic Engineering*, 20(10): 04015005, 2015.
- 30 Schilling, K.E., Isenhardt, T.M., Palmer, J.A., Wolter, C.F., and Spooner, J.: Impacts of Land-Cover Change on Suspended Sediment Transport in Two Agricultural Watersheds. *Journal of the American Water Resources Association (JAWRA)*,

47(4):672-686, 2011.

Shi, Y., Zhao, X., Gao, X., Zhang, S., and Wu, P.: The Effects of Long-Term Fertiliser Applications on Soil Organic Carbon and Hydraulic Properties of a Loess Soil in China. *Land Degradation and Development*, 27 (1): 60-67, 2016.

doi:10.1002/ldr.2391.

5 Singh, R., Panigrahy, N., and Philip, G.: Modified rainfall simulator infiltrometer for infiltration, runoff and erosion studies. *Agricultural Water Management*, 41(3):167-175, 1999.

Sun, B., Zhang, L.X., Yang, L.Z., Zhang, F.S., Norse, D., and Zhu, Z.L.: Agricultural Non-Point Source Pollution in China: Causes and Mitigation Measures. *AMBIO*, 41:370-379, 2012.

Tang, L.Q., and Chen, G.X.: A dynamic model of runoff and sediment yield from small watershed. *Journal of Hydrodynamics*, 12(2): 164-174, 1997.

10

Tang, L.Q.: Sediment yield model of River Basin. *Advances in Water Science*, 7(1):43-51, 1996.

Tian, P., J. Zhai, G. Zhao, and X. Mu.: Dynamics of Runoff and Suspended Sediment Transport in a Highly Erodible Catchment on the Chinese Loess Plateau. *Land Degradation and Development*, 2016, 27 (3): 839-850.

doi:10.1002/ldr.2373.

15 Wang, B.W.: Spatio-temporally Assessment of Soil Loess in YanHe River Basin on Loess Plateau Based on GIS and RUSLE. Research Center of soil and water conservation and ecological environment of the Ministry of education, the Chinese Academy of Sciences: Master degree thesis, 2007.

Wang, D.C., and Lu, Y.D.: Development of soil erosion models abroad. *Science of Soil and Water Conservation*, 2(2):35-40, 2004.

20 Wang, G., and Fan, Z.: Study on the changes of water and sediment in the Yellow River (Volume 1)—Analysis on the variation of water and sediment of the Yanhe River. Zhengzhou: The Yellow River Water Conservancy Press, 623-643, 2002.

Wang, H., Cai, Q.G., and Zhu, Y.D.: Evaluation of the EUROSEM model for predicting water erosion on steep slopeland in the Three Gorges Reservoir Area, China. *Geographical Research*, 22(5): 579-589, 2003.

25 Wang, S., Fu, B.J., Piao, S.L., Lü, Y.H., Ciais, P., Feng, X.M., and Wang, Y.F.: Reduced sediment transport in the Yellow River due to anthropogenic changes. *Nature Geoscience*, doi: 10.1038/NGEO2602, 2015.

Wang, S.W., Li, J.Y., Xu, Z.X., and Zhang, N.: Soil erosion model studies: A state-of-the art review. Beijing: Sciencepaper Online.<http://www.paper.edu.cn/releasepaper/content/200803-986>, 2008.

Wang, Z.S., Wang, Z.Q., and Liu, Z.: Quantitative study on spatial variation of soil erosion in a small watershed in the Loess hilly region. *Journal of Soil Erosion and Soil Conservation*, 2(1):1-10, 1996.

30

Wischmeier, W.H., and Smith, D.D.: Predicting rainfall-erosion losses from cropland east of the Rocky Mountains: Guide for

- selection of practices for soil and water conservation. USDA Agricultural Handbook, 1965.
- Wischmeier, W.H., and Smith, D.D.: Predicting Rainfall Erosion losses. A Guide to Conservation Planning with the Universal Soil loss Equation. Agriculture Handbook No. 537, United States Department of Agriculture, Springfield, USA, 1978.
- 5 Wu, Y., Zhang, X.P., Chen, F.J., Wan, L., Fu, Y.L., and Liu, G.B.: Preliminary investigation on soil erosion and spatial distribution after returning farmland in typical watershed of Northern Shaanxi Province. *Research of Soil and Water Conservation*, 17(4): 29-33, 2010.
- Xia, C.L., Shi, Z.G., Yang, Y.S., and Ou, Y.F.: Experimental study of hillside topographic factor of soil erosion in Anhui province. *Journal of Hefei University of Technology*, 21(s): 7-11, 1998.
- 10 Xie, H.X.: Study on the spatio-temporal change of soil loss and on the assessment of impacts on Environment of soil and water conservation in Yanhe basin. Xi'an: Doctoral Dissertation of Shaanxi Normal University, 47-59, 2008.
- Xie, W.C.: Research on watershed sediment delivery ratio in the hilly region of Loess Plateau: A case study in the Yanhe basin. Beijing: Master Dissertation of Peking University, 33-50, 2012.
- Xie, W.C., Li, T.H.: 2012. Research Comment on Watershed Sediment Delivery Ratio. *Acta Scientiarum Naturalium Universitatis Pekinensis*, 48(4): 685-694.
- 15 Xie, Y., Lin, Y., and Zhang, Y.: The development and application of the Universal Soil Loess Equation. *Progress in Geography*, 22(3): 279-287, 2003.
- Xu, X.X., Gao, Z.X., and Zhao, J.N.: Trends of runoff and sediment load of Yanhe River basin and their related driving forces during 1956-2009. *Journal of Sediment Research*, (2):12-18, 2012.
- 20 Yang, T., Chen, J.R., Yao, W.Y., Shi, X.J., Huang, G.R., and Xie, H.H.: Application of DEM-based runoff and sediment yield modeling in the hilly loess region_case study on two typical small catchments in the middle stream of Yellow River. *Journal of Hydrodynamics (Ser. A)*, 22(5): 583-591, 2007.
- Yang, T., Chen, J.R., Zhou, Y., Yao, W.Y., Chen, X., Shi, X.J., Xu, Y., and Huang, G.R.: Scenario simulation of runoff and sediment processes in the small catchment in the hilly-gully region of Loess Plateau. *Science of Soil and Erosion Conservation*, 6(2): 8-14, 2008.
- 25 Yao, W.Y., and Xiao, P.Q.: Research direction of the study of soil erosion in the Loess Plateau. *Advances in Science and Technology of Water Resources*, 32(2): 73-78, 2012.
- Yao, W.Y., Xu J.H., and Ran D.C.: Analysis and evaluation of water and sediment variation in the Yellow River basin. Zhengzhou: The Yellow River Water Conservancy Press, 2011.
- 30 Yin, G.K., and Chen, Q.L.: Characteristic index and statistical model of sediment yield in small drainage basins of Loess Plateau in China. *Acta Geographica Sinica*, 44(1):32-44, 1989.

- Yu, G.Q., Li, Z.B., Zhang, X., Li, P., Chen, L., and Jia, L.L.: Experimental study on runoff erosion and sediment yield under field simulated rainfall conditions. *Journal of Soil and Water Conservation*, 23 (4):10-14, 2009.
- Yu, W.J., Jiao J.Y., Chen, Y., Wang D.L., Wang, N., and Zhao, H.K.: Seed Removal due to Overland Flow on Abandoned Slopes in the Chinese Hilly Gullied Loess Plateau Region. *Land Degradation and Development*, 2016.
5 doi:10.1002/ldr.2519.
- Yu, Y., Wei, W., Chen, L.D., Jia, F.Y., Yang, L., Zhang, H.D., Feng, T.J.: Responses of vertical soil moisture to rainfall pulses and land uses in a typical loess hilly area, China. *Solid Earth*, 6 (2), 595-608, 2015. DOI:
<http://dx.doi.org/10.5194/se-6-595-2015>
- Zhang, K.L., Peng, W.Y., and Yang, H.L.: Soil erodibility and its estimation for agricultural soil in China. *Acta Pedologica Sinica*, 44(1):7-13, 2007.
10
- Zhou, P.H., Zhang, X.D., and Tang, K.L.: Rainfall installation of simulated soil erosion experiment hall of the State Key Laboratory of Soil Erosion and Dryland Farming on Loess Plateau. *Bulletin of Soil and Water Conservation*, 20(4): 27-30, 45, 2000.
- Zhang, Q.L., Chen, Y.X., Yu, Q.G., Deng, H., and Tian, P.: A review on nonpoint source pollution models. *Chinese Journal of Applied Ecology*, 18(8): 1886-1890, 2007.
15
- Zhang, S.G., Zhang, X.H., and Wang, Y.L.: Reflections on non point source pollution control problem in the Yellow River. *Soil and Water Conservation in China*, (8):11-12, 2004.
- Zhang, W.B., Xie, Y., and Liu, B.Y.: Spatial variation of rainfall erosion in China. *Journal of Mountain Science*, 21(1):33-40, 2003.
- Zhang, Y., Liu, X.C., Li, Z.G., and Zhu, Q.K.: Surveying soil erosion condition in Loess Plateau using soil erosion model. *Transactions of the Chinese Society of Agricultural Engineering*, 28(10): 165-171, 2012.
20
- Zhao, C., Gao, J., Huang, Y., Wang, G., and Xu, Z.: The Contribution of Astragalus Adsurgens Roots and Canopy to Water Erosion Control in the Water-Wind Crisscrossed Erosion Region of the Loess Plateau, China. *Land Degradation and Development*, 2016a. doi:10.1002/ldr.2508.
- Zhao, G., Mu, X., Wen, Z., Wang, F., and Gao, P.: Soil erosion, conservation, and eco-environment changes in the Loess Plateau of China. *Land Degradation & Development*, 24: 499-510, 2013.
25
- Zhao, G., Mu, X., Jiao, J., An, Z., Klik, A., Wang, F., Jiao, F., Yue, X., Gao, P., and Sun, W.: Evidence and Causes of Spatiotemporal Changes in Runoff and Sediment Yield on the Chinese Loess Plateau. *Land Degradation and Development*, 2016b. doi:10.1002/ldr.2534.
- Zhao, X., Wu, P., Gao, X., and Persaud, N.: Soil Quality Indicators in Relation to Land use and Topography in a Small Catchment on the Loess Plateau of China. *Land Degradation and Development* 26 (1): 54-61, 2015.
30

doi:10.1002/ldr.2199.

Zhao, X.N., Wu, P.T., Feng, H., Wang, W.Z., and Wu, F.Q.: Research on slope soil erosion based on manpower neural network. *Science of Soil and Water Conservation*, 2(3):32-35, 2004.

5 Zhou, Z.C., and Shangguan, Z.P.: Overview on soil erosion model research. *Science of Soil and Water Conservation*, 2(1): 52-55, 2004.

Zhu, H.F., Kang, M.Y., Zhao, W.W., and Guo, W.W.: Effects of Soil and Water Conservation Measures on Erosion, Sediment Delivery and Deposition in Yanhe River Basin. *Research of Soil and Water Conservation*, 14(4):1-4, 2007.

Zhu, Q.K., Qin, W., and Zhang, Y.: Soil erosion and sediment yield and its response to vegetation restoration in the watershed. Beijing: Science Press, 2016.

10

15

20

25

30

35

40

Table 1: Descriptions and sources of the environmental database for the Majiagou River watershed

Data layer	Format	Description	Source
DEM	Raster	30 m spatial resolution DEM data of the Majiagou watershed	Computer Network Information Center, Chinese Academy of Sciences http://datamirror.csdb.cn/index.jsp
Land use	Raster	Farmland, grassland, forest land, residential area, water area, sand	Data Center for Cold and Arid Region Sciences http://westdc.westgis.ac.cn/
precipitation	DBF	Daily values in Ansai, Yanan, Yanchang, and other rain-gauge stations (1957-2013)	China Meteorological Data Sharing Service Network http://www.cdc.sciencedata.cn
Soil	DBF	Physical and chemical properties	
Runoff and sediment	Excel	Time series of annual observed values in Ansai, Zaoyuan, and Ganguyi hydrological stations (1954-2012)	National Science & Technology Infrastructure of China, Data Sharing Infrastructure of Earth System Science (http://loess.geodata.cn/)

Table 2: The annual dynamic values of *R* factor (MJ·mm/hm²·h·a) in the Majiagou River watershed from 1995 to 2013

Year	<i>R</i> value	Year	<i>R</i> value	Year	<i>R</i> value	Year	<i>R</i> value
1995	1240.416	2000	759.223	2005	1573.623	2010	1235.926
1996	1046.692	2001	2004.196	2006	1957.735	2011	1904.582
1997	1253.405	2002	1856.162	2007	1515.931	2012	1470.239
1998	1804.647	2003	1890.972	2008	937.696	2013	5644.205
1999	849.033	2004	1166.029	2009	1797.271		

5

Table 3 Classification and gradation of soil erosion, percentage in the Majiagou River watershed in 1995 and 2010

Erosion gradation	Erosion modulus (t/hm ² ·a)	1995		2010	
		Ratio (%)	Area (hm ²)	Ratio (%)	Area (hm ²)
micro	<5	11.60	856.17	9.55	704.85
mild	5~10	8.85	653.08	8.01	591.36
mild	10~25	34.96	2581.46	29.37	2168.31
moderate	25~50	37.35	2757.67	40.63	2999.59
intensive	50~80	6.12	451.98	10.34	763.59
Very intensive	80~150	1.12	82.63	2.06	152.32
severe	>150	/	/	0.04	2.99
sum		100	7383	100	7383

10

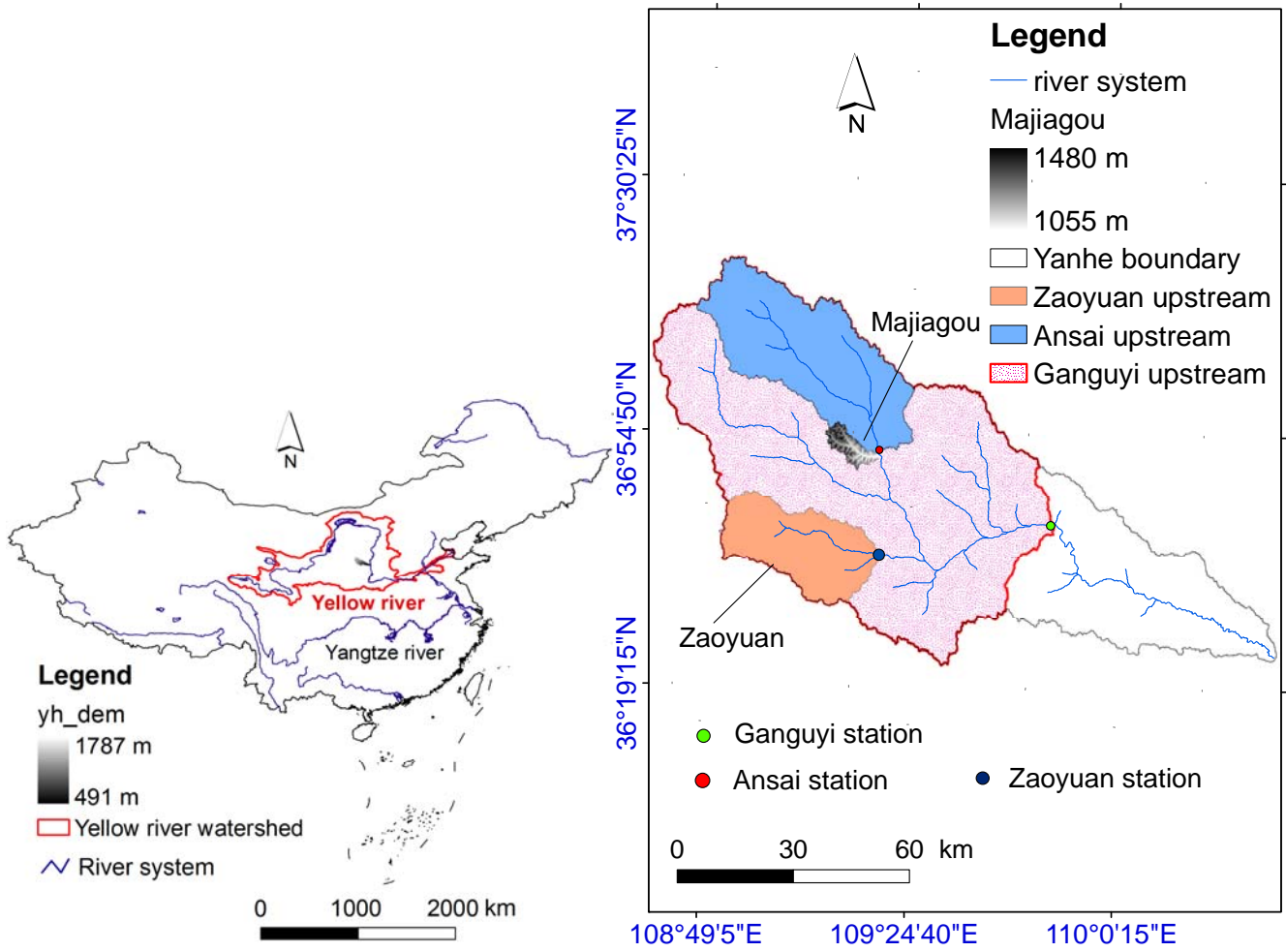


Figure 1: The relative location between the Yanhe River watershed and the Yellow River/Yellow River Basin, the geographical location sketch of the Majiagou River watershed, Zaoyuan upstream, Ansai upstream, Ganguyi upstream in the river system of Yanhe River watershed

5

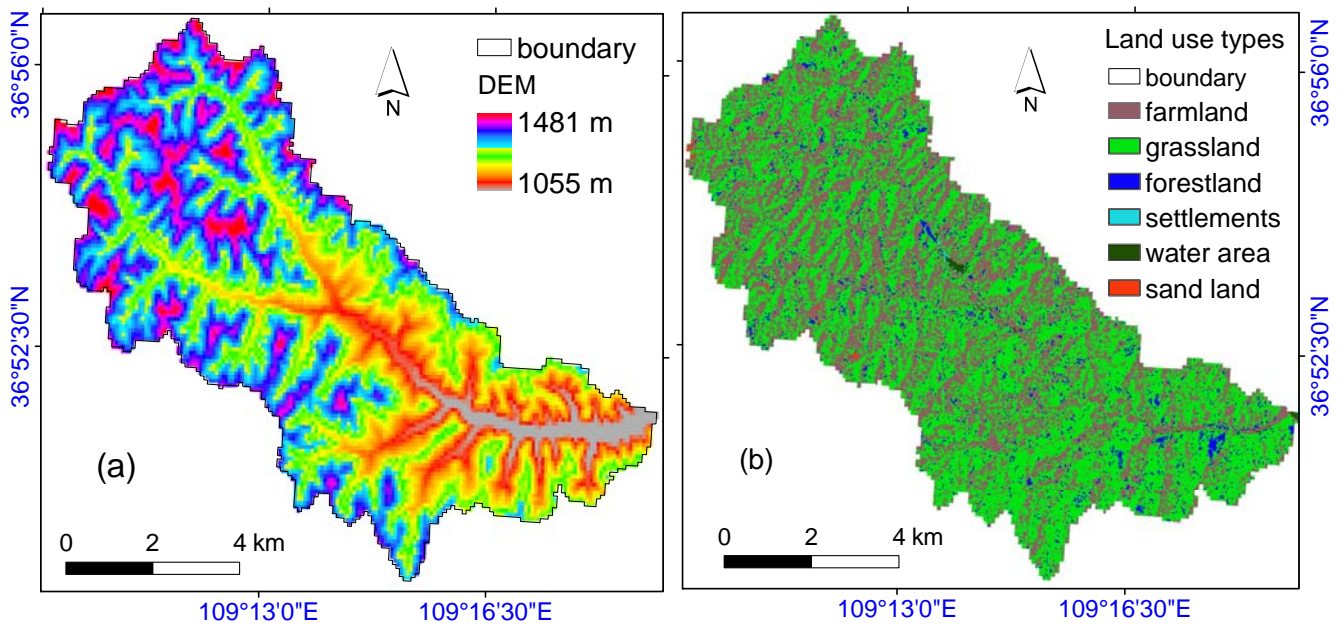
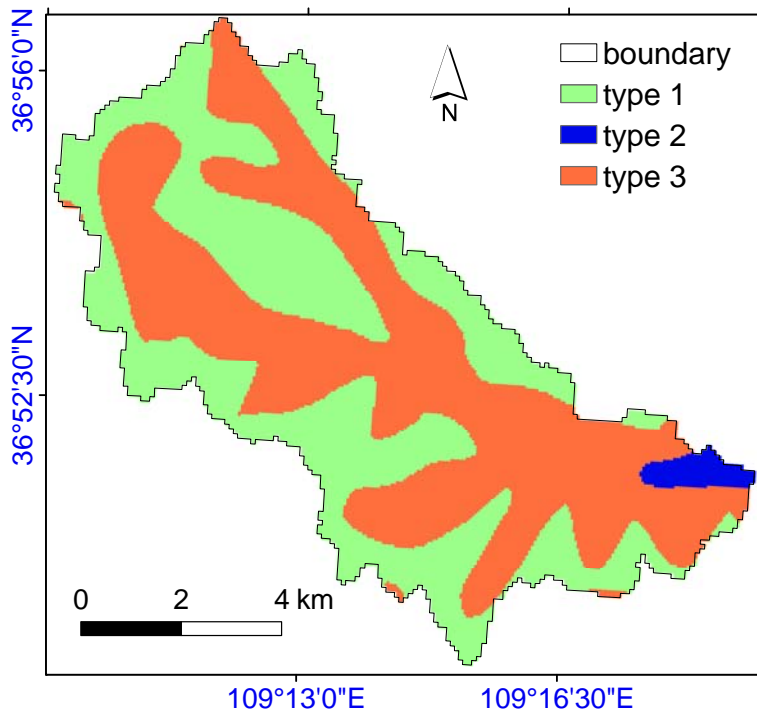


Figure 2: Longitude and latitude coordinates of the study area, digital elevation model (DEM) data, reclassified land use types of the Majiagou River watershed



5 **Figure 3: Soil types of the Majiagou River watershed (Legend notes: Type 1: Tillage erosive loessal soil (80%) + Erosive loessal soil (20%); Type 2: Tillage erosive loessal soil (80%) + Calcareous alluvial soil (20%); Type 3: Erosive loessal soil (80%) + Tillage erosive loessal soil (20%).**

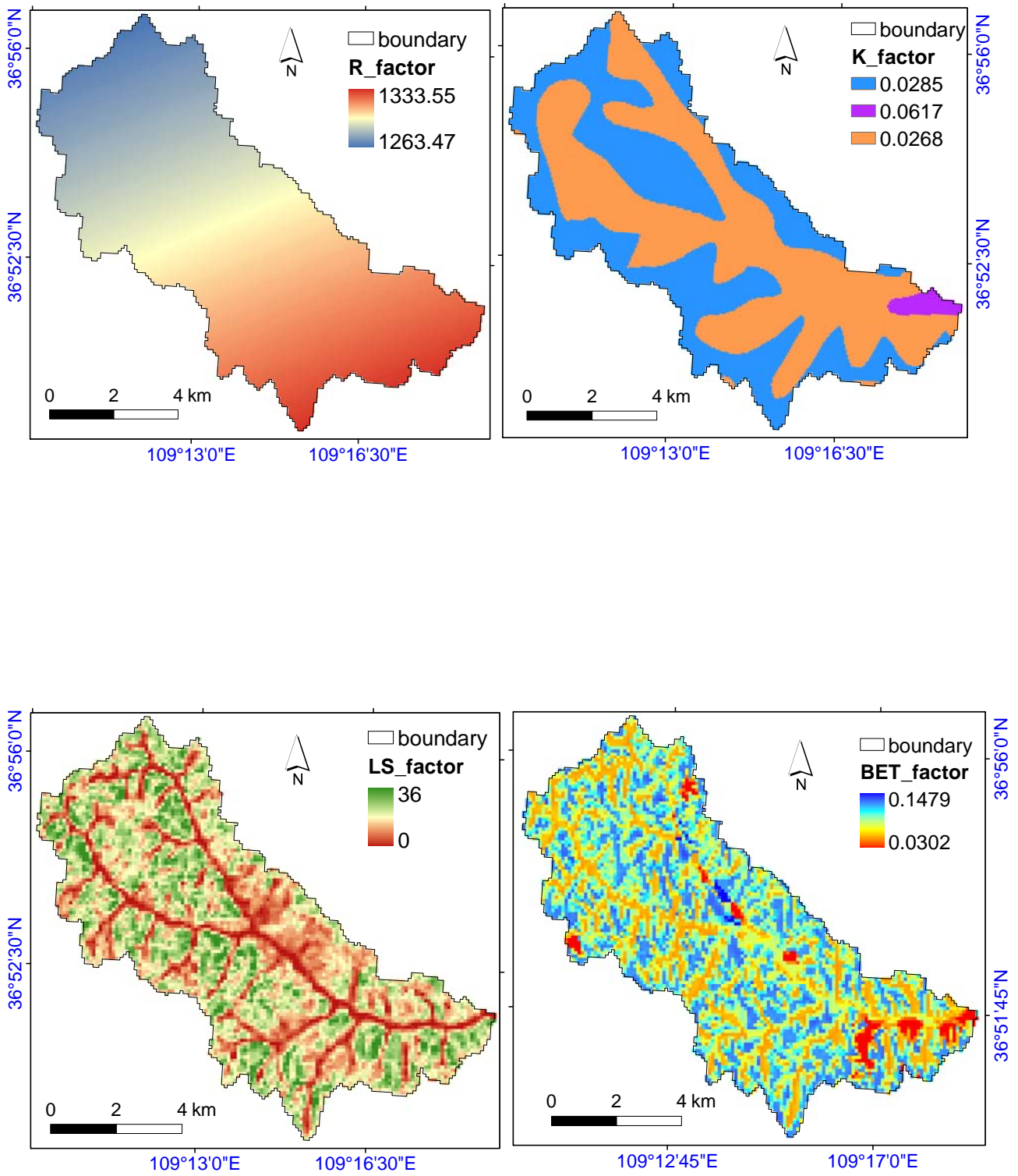


Figure 4: Spatial distributions of annual average R factor, K factor, LS factor and BET factor in the Majiagou River watershed

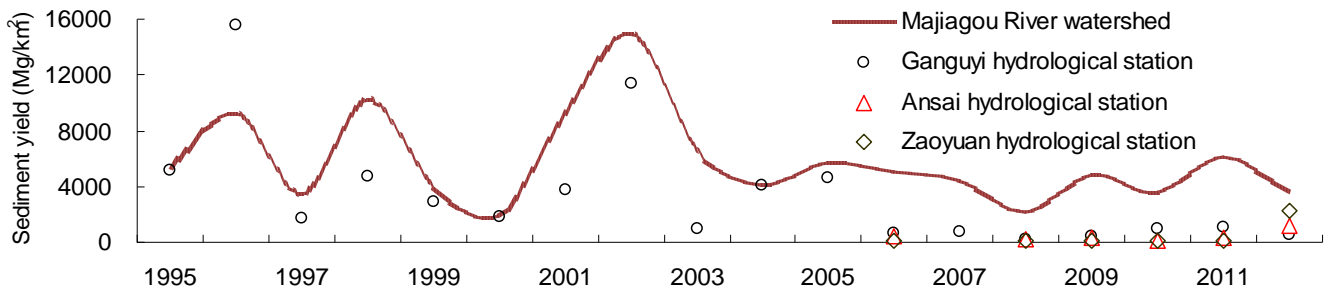


Figure 5: Validation of sediment yield modulus between Ganguyi, Ansai, Zaoyuan hydrological stations and Majiagou River watershed based on the established model

5

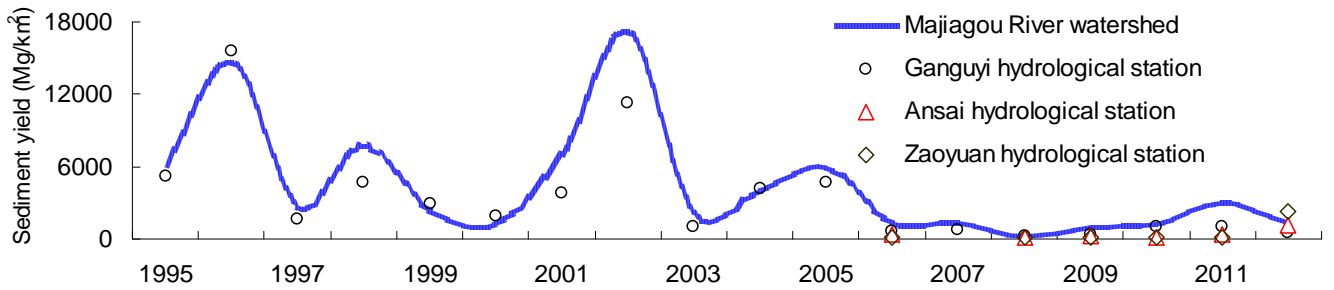


Figure 6: Validation of sediment yield modulus between Ganguyi, Ansai, Zaoyuan hydrological stations and Majiagou River watershed based on the modified model

10

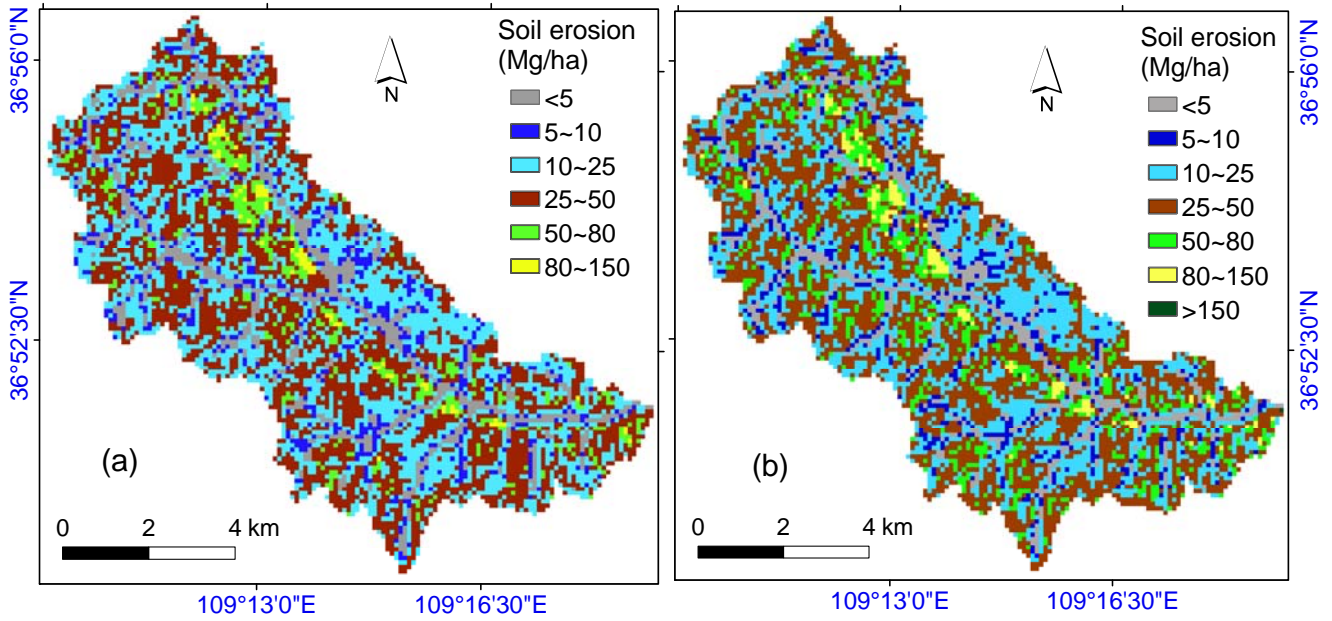


Figure 7: Spatial distribution of soil erosion gradations of the Majiagou River watershed: (a) 1995; (b) 2010

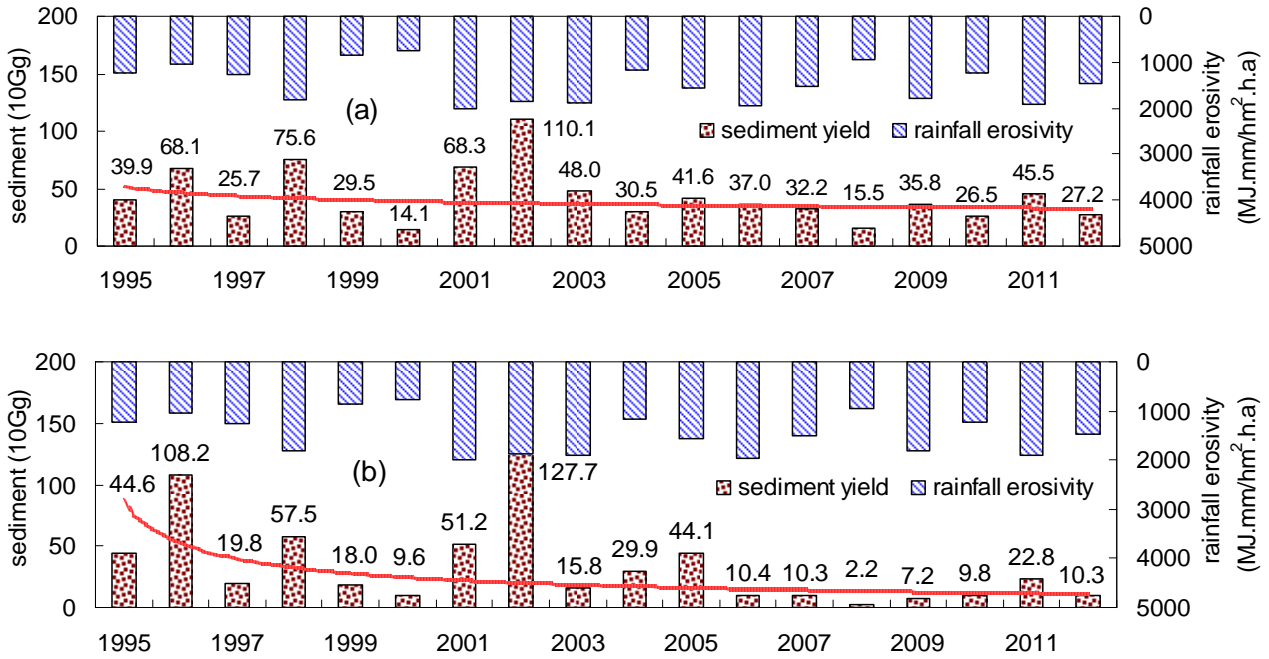


Figure 8: Comparative variations of sediment yield and rainfall erosivity in the Majiagou River watershed from 1995 to 2012: (a) the established dynamic model, (b) the modified dynamic model

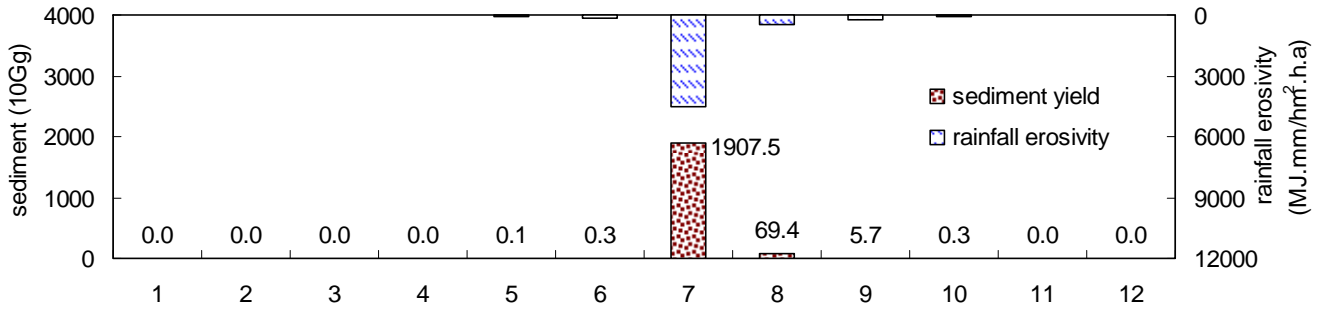


Figure 9: Comparison of monthly sediment yield and rainfall erosivity in the Majiagou River watershed in 2013

5

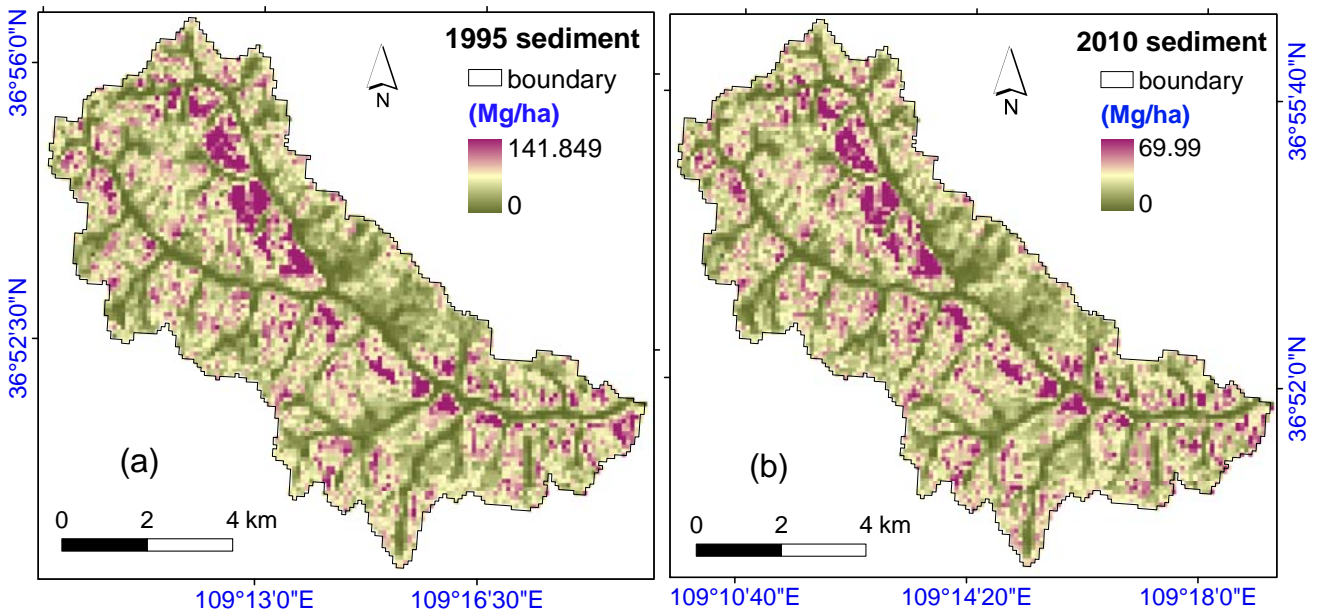


Figure 10: Spatial distribution of sediment yield modulus of the Majiagou River watershed: (a) 1995; (b) 2010