

## ***Interactive comment on “Application of a new productivity coupling hydrothermal factors (PCH) model for evaluating net primary productivity of grassland in Southern China” by Zheng-Guo Sun et al.***

**Zheng-Guo Sun et al.**

sunzg@njau.edu.cn

Received and published: 22 November 2016

Dear Dr. Antonio Jordán, I am very grateful for your helpful comments on the figures of the article. The comments will be beneficial to the improvement of the article and my professional development. According to your comments, the figures have been improved. Then on behalf of my co-authors, I will resubmit the processed figures to the Copernicus Office. Thanks a lot. Yours Sincerely,

Zhengguo Sun Nanjing Agricultural University 1st Weigang Road, Nanjing, Jiangsu Province, 210095, People’s Republic of China, sunzg@njau.edu.cn

Printer-friendly version

Discussion paper



Please also note the supplement to this comment:

<http://www.solid-earth-discuss.net/se-2016-148/se-2016-148-AC1-supplement.pdf>

---

Interactive comment on Solid Earth Discuss., doi:10.5194/se-2016-148, 2016.

**SED**

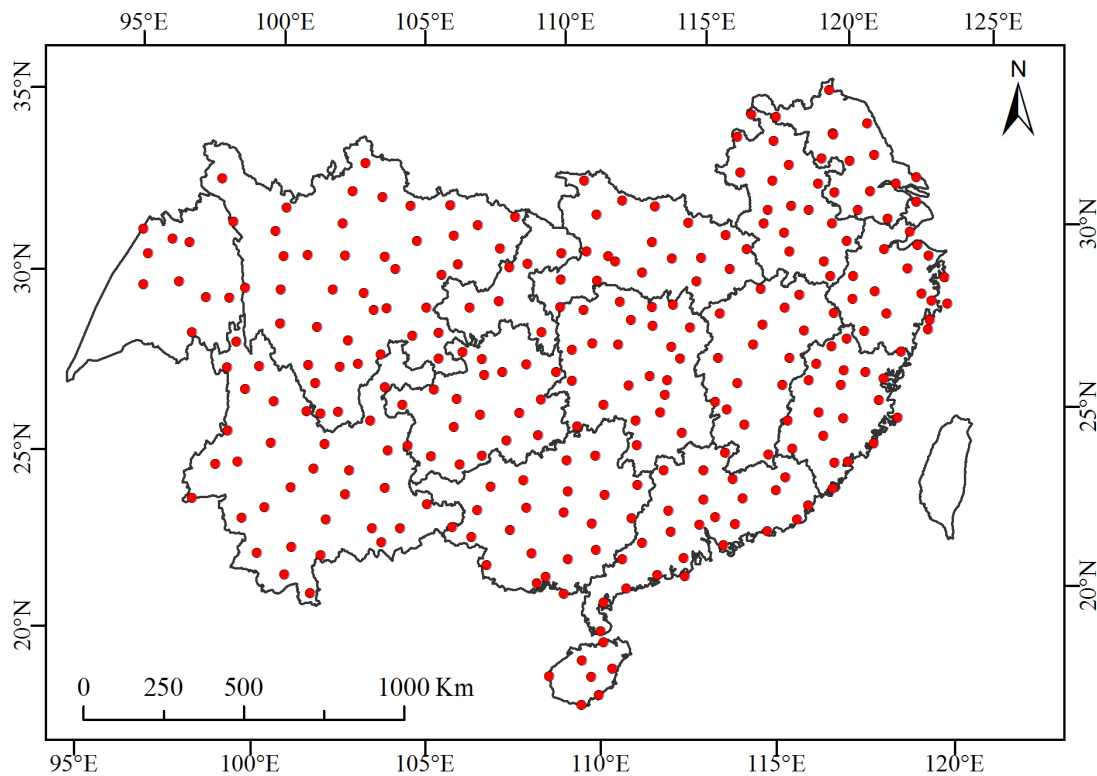
---

Interactive  
comment

Printer-friendly version

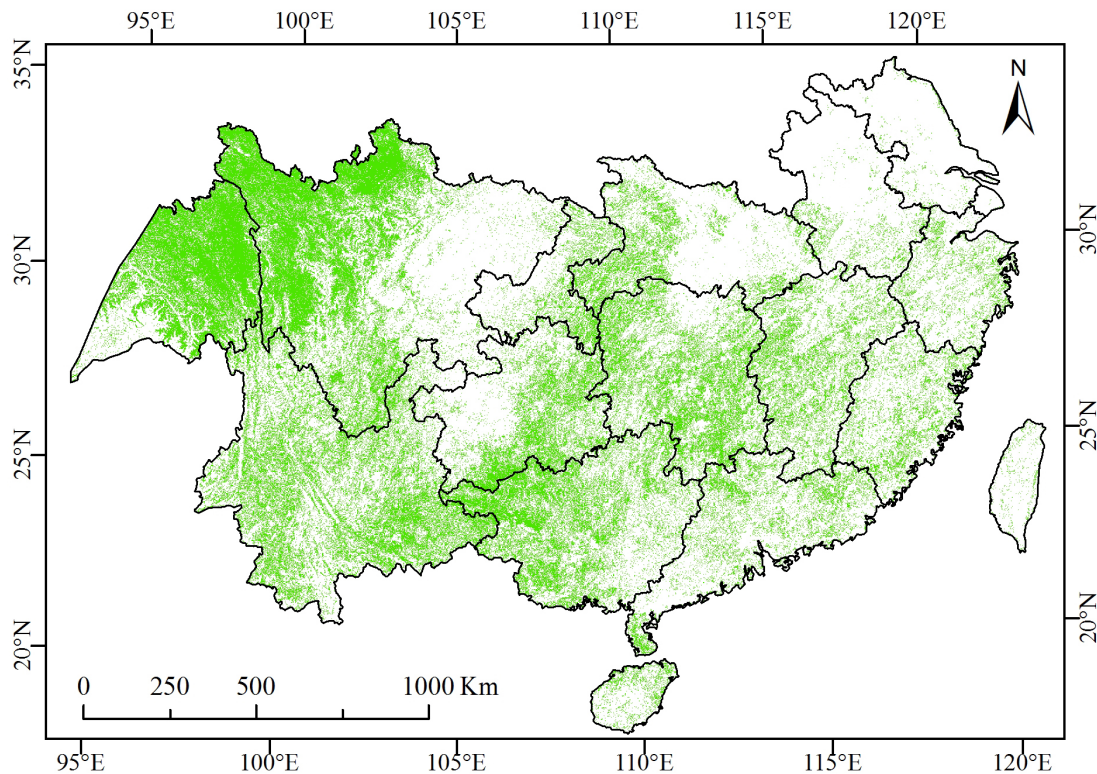
Discussion paper





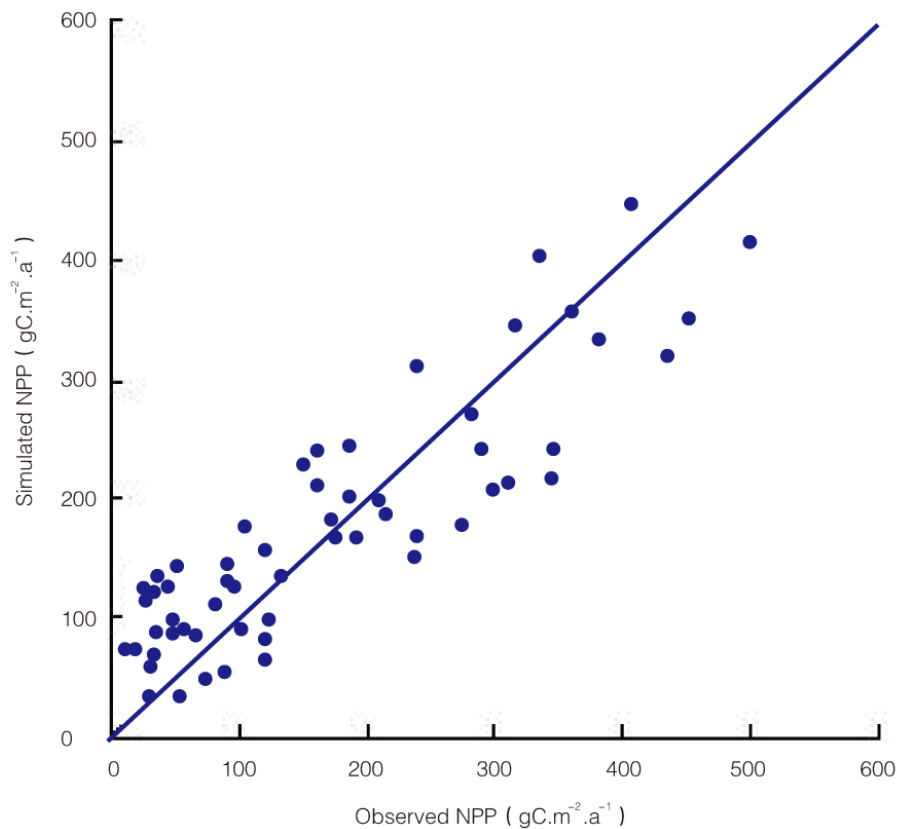
**Fig. 1.** Study area and meteorological stations in Southern China (the black boundary-lines indicate the provincial boundary; the red dots represent the locations of the meteorological stations).

[Printer-friendly version](#)[Discussion paper](#)



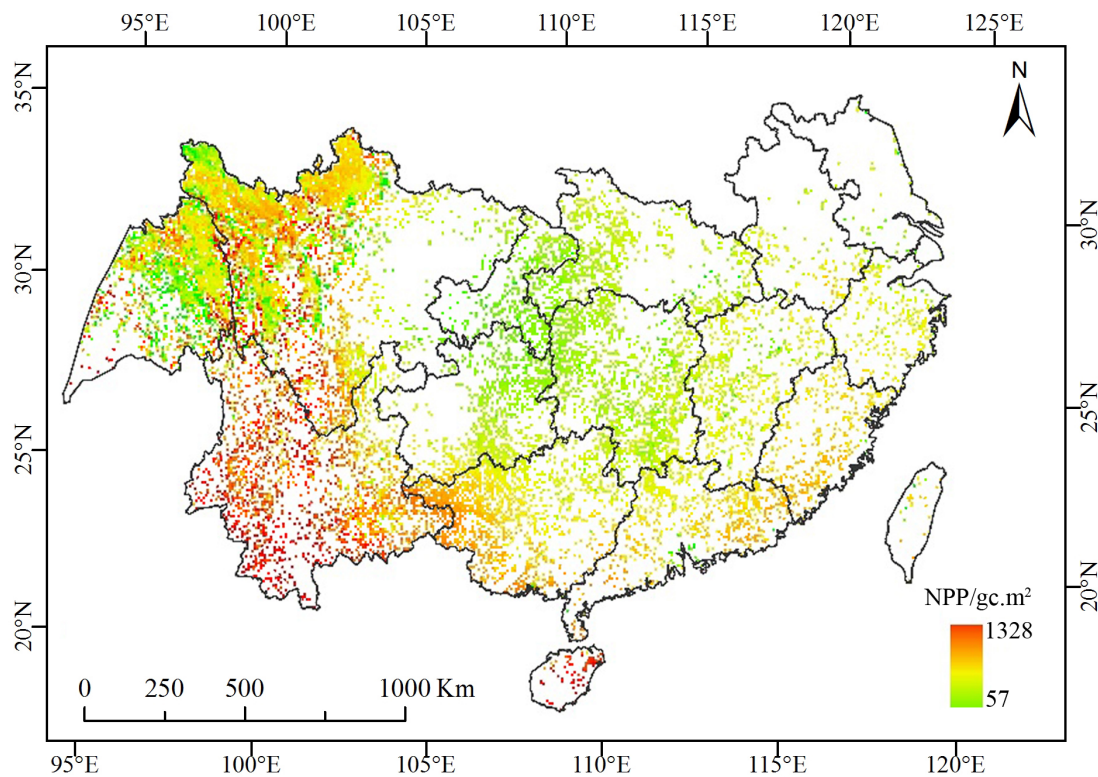
**Fig. 2.** The distribution map of grasslands of Southern China (the green zone represents the grassland area, and the colorless region represents the non-grassland of the study area).

[Printer-friendly version](#)[Discussion paper](#)



**Fig. 3.** Comparison between simulated and observed grassland NPP (net primary productivity) of Southern China.

[Printer-friendly version](#)[Discussion paper](#)

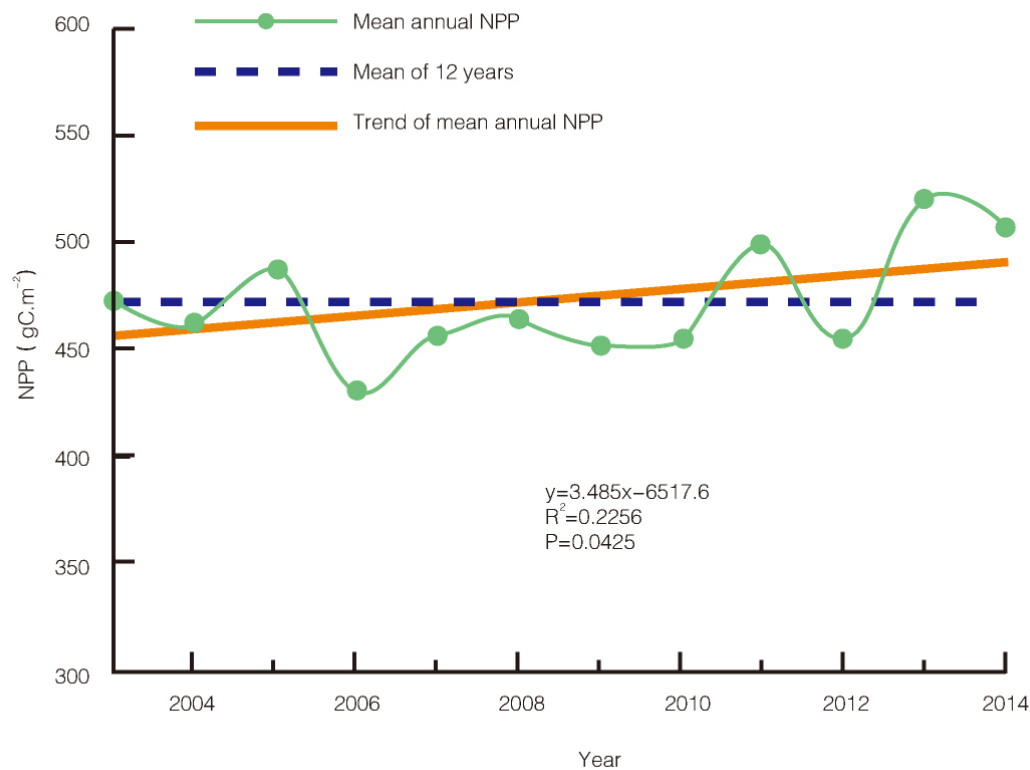


**Fig. 4.** Spatial characteristics of grassland NPP of Southern China from 2003 to 2014.

Printer-friendly version

Discussion paper





**Fig. 5.** The inter-annual variation of grassland NPP of Southern China from 2003 to 2014.