

Figure 1. Study area location in Guizhou, China (a)(b), Study area remote images(c), Topography (d), Soil map (e), Lithology (f) and Rocky desertification (g)

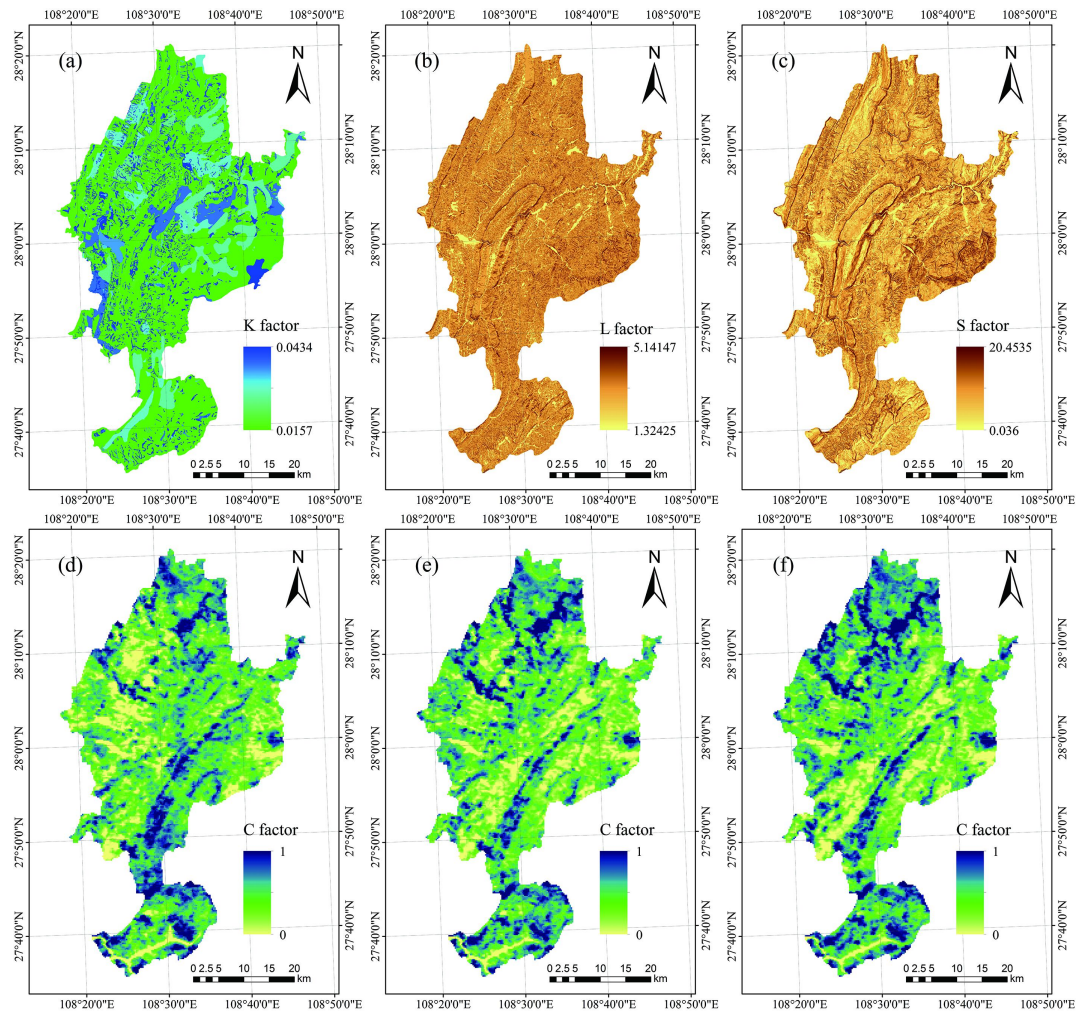


Figure 2. Soil Erodibility map(a), Slope Length Factor map(b), Slope Gradient Factor map(c), 2000 Cover Management Factor map(d), 2005 Cover Management Factor map(e), 2013 Cover Management Factor map(f)

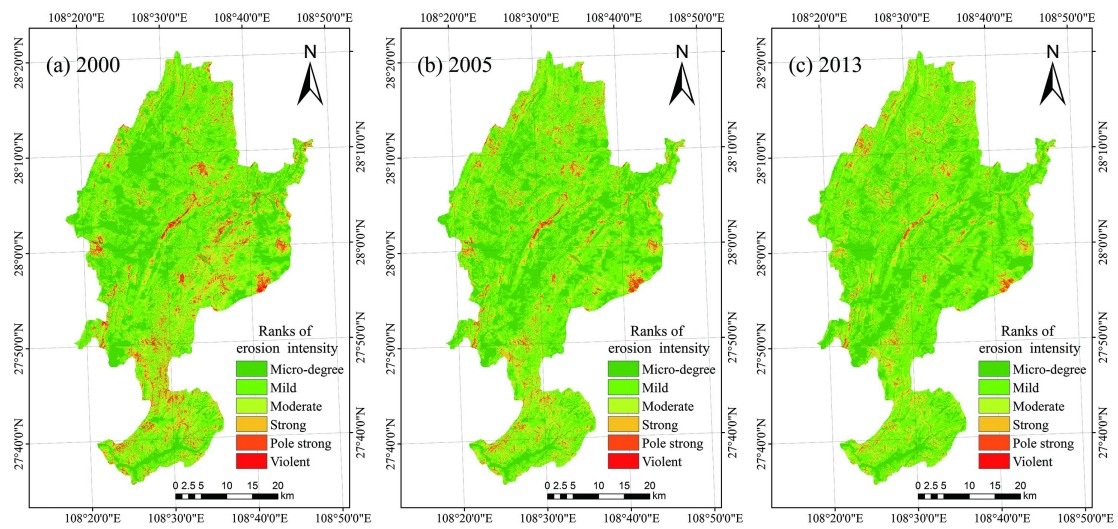


Figure 3. Spatial distribution of soil erosion in Yinjiang in different periods

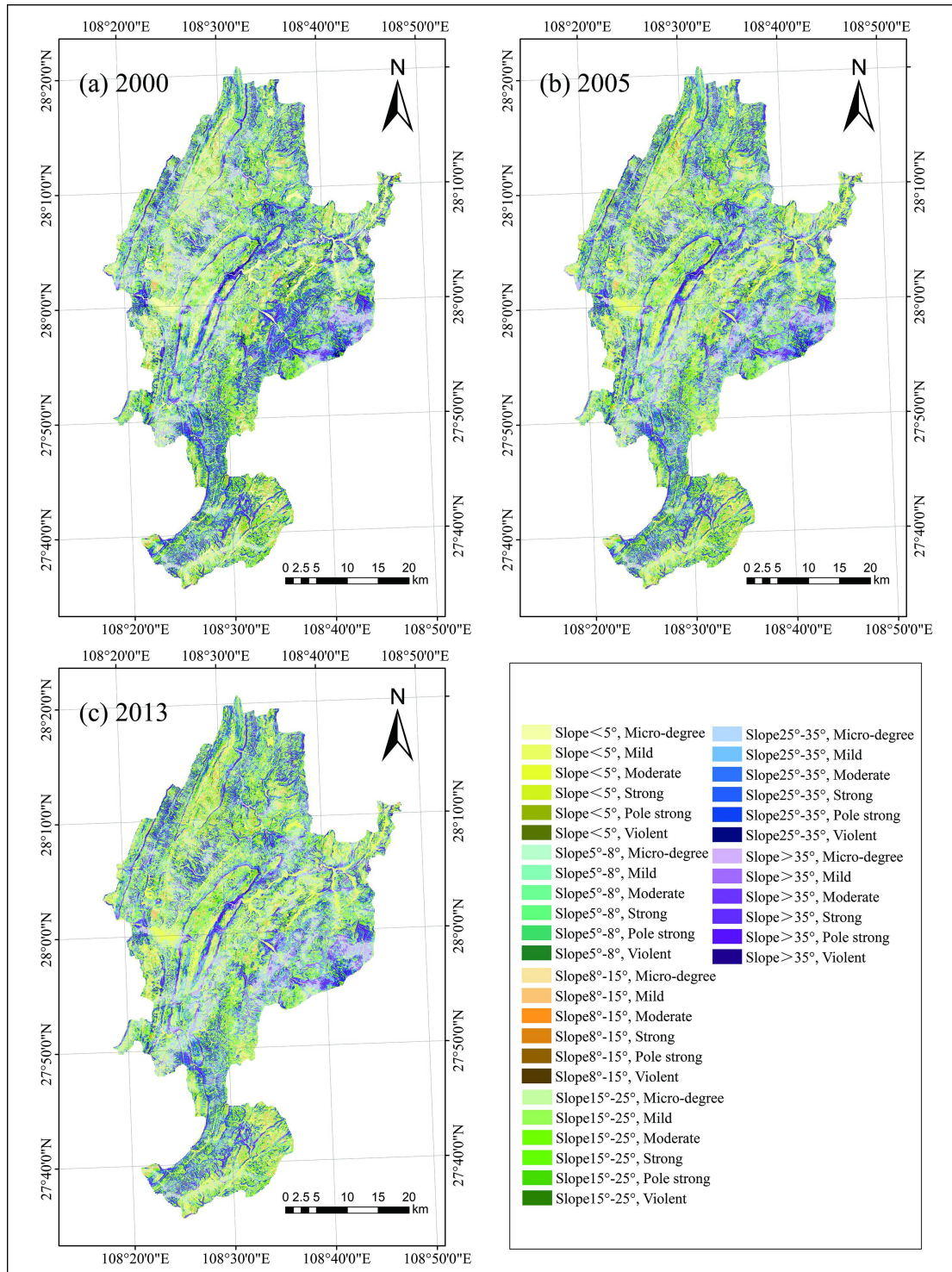


Figure 4. Spatial distribution of soil erosion in different slope band

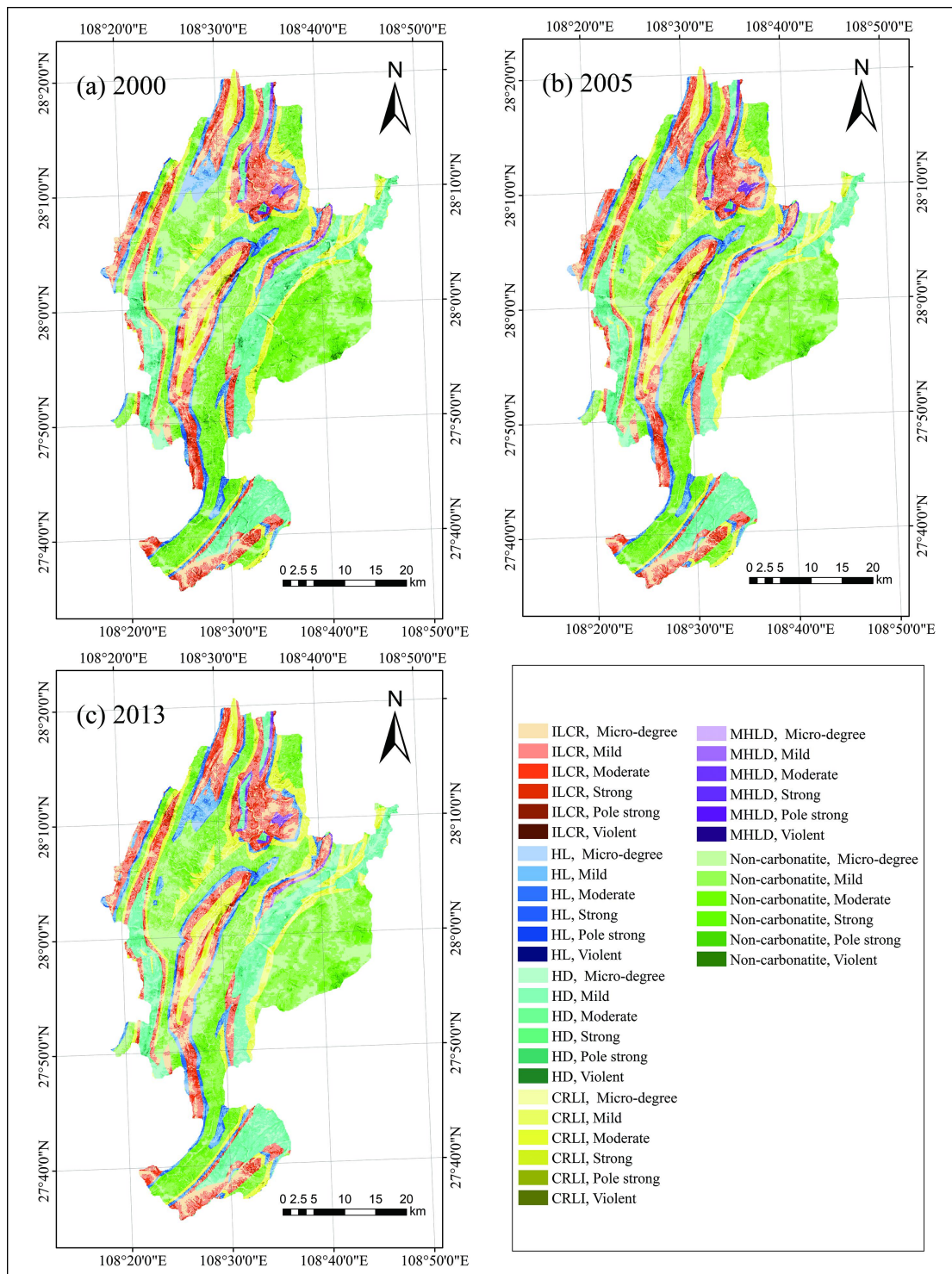


Figure5. Spatial distribution of soil erosion in different outcrop areas of rocks

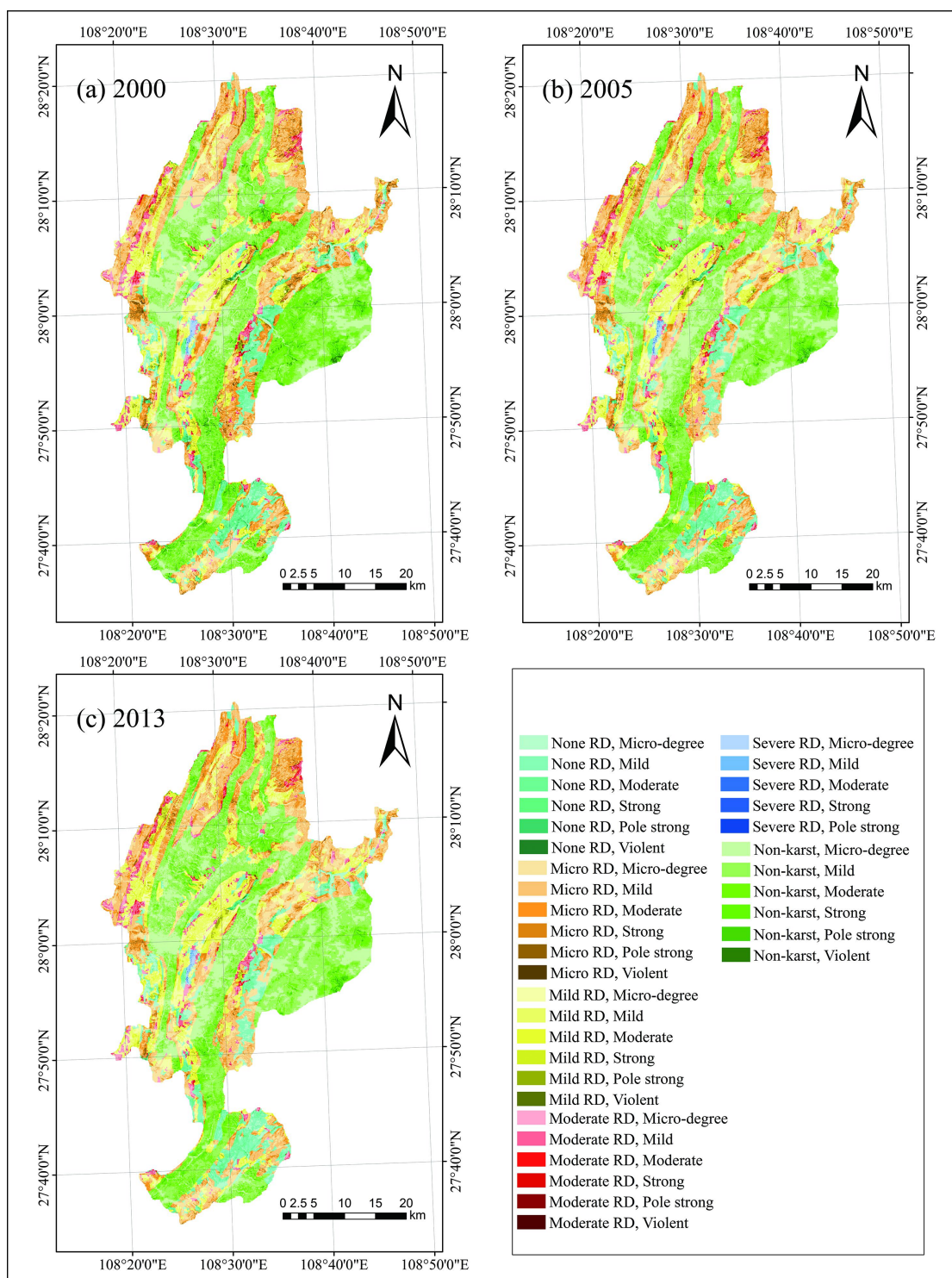


Figure 6. Spatial distribution of soil erosion in different desertification grades