

Interactive comment on “Crustal Thickness of Antarctica estimated using data from gravimetric satellites” by Muriel Llubes et al.

Muriel Llubes et al.

muriel.llubes@get.omp.eu

Received and published: 30 December 2017

Please find attached our response to reviewer 2. As there is a figure in our response, I prefer to send it as a pdf file. I also provide the updated version of figure 6 and the new figure 8.

Please also note the supplement to this comment:

<https://www.solid-earth-discuss.net/se-2017-107/se-2017-107-AC2-supplement.pdf>

Interactive comment on Solid Earth Discuss., <https://doi.org/10.5194/se-2017-107>, 2017.

Printer-friendly version

Discussion paper



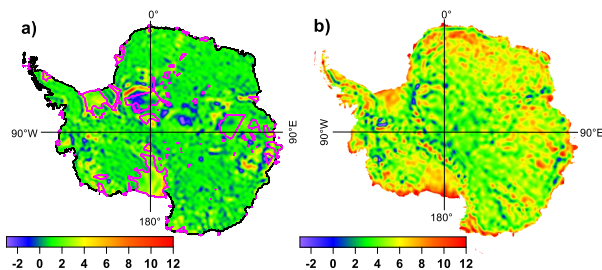


Figure 6. a) Differences between estimation of crust thickness: results using BEDMAP minus results using Bedmap2. The pink line delimitates the zones where GOCE observations are used in Bedmap2. Units are km. b) Differences between the crust thickness computed from GOCE and the CRUST1.0 model. Units are km.

Fig. 1.

Printer-friendly version

Discussion paper



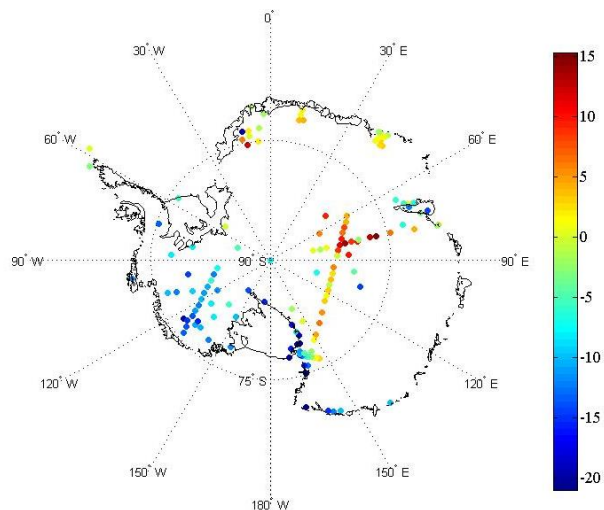


Figure 8. Differences between the compilation of receiver functions selected by An (An et al., 2015, Fourth column of Table S1) and the crustal thickness obtained in this study. Units are km.

Fig. 2.