

Interpretation of zircon corona textures from metapelitic granulites of the Ivrea-Verbano Zone, Northern Italy: Two-stage decomposition of Fe-Ti oxides

Elizaveta Kovaleva^{1,2}, Håkon O. Austrheim³, Urs S. Klötzli²

5 ¹Department of Geology, University of the Free State, Bloemfontein, 9300, 205 Nelson Mandela Drive, Free State, South Africa

²Department of Lithospheric Research, Faculty of Earth Sciences, Geography and Astronomy, University of Vienna, Vienna, A-1090, Althanstrasse 14, Austria

³Section of Physics of Geological processes, Department of Geoscience, University of Oslo, Oslo, 0316, Norway

10 Correspondence to: Elizaveta Kovaleva (kovalevae@ufs.ac.za)

Abstract. In this study, we report the occurrence of zircon coronae textures in metapelitic granulites of the Ivrea-Verbano Zone. Unusual zircon textures are spatially associated with Fe-Ti oxides and occur as (1) vermicular-shaped aggregates 50-200 µm long and 5-20 µm thick, and as (2) zircon coronae and fine-grained chains, hundreds of µm long and ≤1 µm thick, spatially associated with the larger zircon grains. Formation of such textures is a result of zircon precipitation during cooling after peak metamorphic conditions, which involved: (1) decomposition of Zr-rich ilmenite to Zr-bearing rutile and vermicular-shaped zircon during retrograde metamorphism and hydration; (2) recrystallization of Zr-bearing rutile to Zr-depleted rutile intergrown with quartz and submicron-thick zircon coronae during further exhumation and cooling. We also observed hat-shaped grains that are composed of preexisting zircon overgrown by zircon coronae during stage (2). Formation of vermicular zircon (1) preceded ductile and brittle deformation of the host rock, as vermicular zircon is found both plastically- and cataclastically-deformed. Formation of thin zircon coronae (2) was coeval with, or immediately after brittle deformation, as coronae are found to fill fractures in the host rock. The latter is evidence of local, fluid-aided mobility of Zr. This study demonstrates that metamorphic zircon can nucleate and grow as a result of hydration reactions and mineral breakdown during cooling after granulite-facies metamorphism. Zircon corona textures indicate metamorphic reactions in the host rock, and establishing the direction of the reaction front.

25 1 Introduction

1.1 Growth of metamorphic zircon

Growth of zircon during metamorphism is described in a variety of lithologies and can occur at different metamorphic grades, from high- (e.g., Fraser et al., 1997; 2004; Degeling et al. 2001; Möller et al. 2003; Wu et al., 2006; Harley et al., 2007; Zhao et al., 2015) to low-temperature metamorphism, including low-temperature hydrothermal reactions (e.g., Dempster et al., 2004, 2008; Rasmussen, 2005; Hay and Dempster, 2009; Hay et al., 2010; Kohn et al., 2015). Growth and new precipitation of zircon has been traced under temperatures as low as 250 °C (Rasmussen, 2005). Metamorphic zircon can precipitate from fluid or melt (e.g., Rasmussen, 2005; Kohn et al., 2015); can result from breakdown of Zr-bearing phases (major or accessory) (e.g., Davidson and van Breemen, 1988; Fraser et al., 1997, 2004; Degeling et al., 2001); or can exsolve from Zr-bearing phases (e.g., Bingen et al., 2001; Tomkins et al., 2007).

35 New metamorphic zircon precipitates during exhumation and cooling of the host rock (Rasmussen, 2005; Kohn et al., 2015) as a result of partial or complete dissolution of preexisting zircon (e.g., Dempster et al., 2008) in partial melt or metamorphic fluid during high-temperature metamorphism (Ewing et al., 2014). Solubility of zircon in most natural fluids is very low (Tromans 2006), thus zircon dissolution models mostly describe interactions with the melt (e.g., Harrison and Watson, 1983; Watson and Harrison, 1983). However, under high (prograde) temperatures and in fluids of favourable composition zircon can

be dissolved without melt involvement (e.g., Rubatto et al., 2008; Hay and Dempster, 2009; Hay et al., 2010; Ewing et al., 2014; Kohn et al., 2015).

Zircon growth and overgrowths formation during cooling stage/retrograde metamorphism may also result from metamorphic reactions and breakdown of other Zr-bearing minerals (Fraser et al., 1997, 2004; Degeling et al., 2001; Möller et al., 2002, 2003; Tomkins et al., 2007). Fraser et al. (1997) and Möller et al. (2002) suggested that the source of newly precipitated zircon is Zr-bearing rock-forming phases (e.g., garnet), which experience breakdown and release Zr. The released Zr is not compatible with the breakdown product (e.g., with cordierite) and thus has to form a separate Zr phase, which could be zircon (Degeling et al., 2001; Möller et al., 2003). Zircon precipitation from other phases may also be facilitated by fluid. For example, Fraser et al. (2004) documented zircon rims precipitated during cooling stage from the hydrous fluid phase, which originated locally as a result of chlorite breakdown. The reactions with zircon precipitation in metamorphic rocks may be more efficient in the zones available for fluid infiltration, like fractures and shear zones (Bingen et al., 2001).

Zircon exsolution has been observed in nature (e.g., Ewing et al., 2013; Pape et al., 2016), and has been demonstrated experimentally with Zr-rich rutile (Tomkins et al., 2007). Resulted zircon appears as thin exsolution lamellae or as small individual euhedral grains within rutile. Similarly, the metapelites from the Ivrea-Verbano Zone reveal thin zircon needles in rutile and chains of fine zircon grains framing rutile (Ewing et al., 2013; Pape et al., 2016).

In this contribution, we investigate unusual zircon textures, such as coronae found in dehydrated metapelitic granulites of the Ivrea-Verbano Zone. We start with a review of the process of zircon precipitation from various Zr-bearing phases, followed by an overview of known examples of zircon coronae. After a short geological background of the unit, we describe the sampled outcrop as well as the sample itself macroscopically. Then a short exposition of applied methods, and microscopic description of the studied sample are presented, followed by a detailed depiction of observed zircon microstructures and textures. For the sake of completion, we also include microprobe data of the studied sample. In the discussion, we suggest mineral reactions that could result in the formation of observed zircon coronae textures, and then discuss the implications.

1.2 Zr-bearing phases potentially associated with zircon precipitation

Zircon dissolution and growth during metamorphism are not independent processes, but must be coupled with the breakdown/growth of other phases and/or with various mineral-fluid reactions in the host rock (e.g., Tomkins et al., 2007; Austrheim et al., 2008). Metamorphic precipitation of zircon could be a result of breakdown of/exsolution from various Zr-bearing phases (Davidson and van Breemen, 1988) such as garnet, amphibole, (clino)pyroxene and ilmenite (e.g., Fraser et al., 1997; Degeling et al., 2001; Möller et al., 2003; Söderlund et al., 2004; Harley et al., 2007; Kelsey et al., 2008; Morisset and Scoates, 2008), hemo-ilmenite (Morisset et al., 2005), baddeleyite (Bingen et al., 2001; Söderlund et al., 2004), rutile (Harley et al., 2007; Tomkins et al., 2007; Morisset and Scoates, 2008; Kelsey and Powell, 2011; Ewing et al., 2013, 2014; Pape et al., 2016), epidote, titanite (Kohn et al., 2015), chlorite (Fraser et al., 2004) and biotite (Vavra et al., 1996). Zircon coronae have been reported around Martian baddeleyite as a result of shock metamorphism (Moser et al., 2013). In mafic metamorphic rocks, precipitation of zircon is commonly associated with the Fe-Ti oxides (Bingen et al., 2001; Ewing et al., 2013, 2014), due to similar chemical properties of Zr and Ti.

Zirconium and titanium both belong to group 4 in the periodic table, have close chemical properties and are usually regarded as relatively immobile trace elements (e.g., Mohamed and Hassanen, 1996). In the group of incompatible cations, Zr and Ti belong to high field strength (HFS) elements, which are smaller and are highly charged compared with large ion lithophile (LIL) elements. The chemical similarities result in a positive correlation between Zr and Ti for most rock suites and in their ability to replace each other in oxides (e.g., Morisset et al., 2005). The fact that Zr oxides and Ti oxides are spatially related in many rocks also reflects chemical similarities between Zr and Ti.

Thus, rutile and ilmenite are the main minerals interpreted to influence the Zr mass balance in metabasites, in the absence of other Zr phases (e.g., Ferry and Watson, 2007; Tomkins et al., 2007; Morisset and Scoates, 2008; Ewing et al., 2013). In the

absence of zircon, rutile can be the main phase holding Zr and Hf in granulite-facies metapelites (Ewing et al., 2014). Zirconium is a common component of rutile, where its content can reach 10 000 ppm (e.g., Ewing et al., 2013); and thus, Zr distributions generally reflect the formation and decomposition of rutile. The temperature dependence of Zr solubility in rutile can have a fundamental impact on the zircon growth rate (Kohn et al., 2015) and controls zircon stability (Kelsey and Powell, 2011). The zirconium-in-rutile thermometer for the rutile-quartz-zircon system was calibrated by a number of authors (e.g., Watson et al., 2006; Ferry and Watson, 2007; Tomkins et al., 2007; Lucassen et al., 2010; Ewing et al., 2013), who have shown a large temperature- and pressure-dependent solubility of Zr in rutile. Zircon growth is frequently associated with the oxide transition from Zr-rich rutile to ilmenite during late-stage exhumation and cooling under a large variety of *P-T* conditions (Ewing et al., 2013). Magmatic and metamorphic ilmenite can also contain significant amounts of Zr (Bingen et al., 2001; Morisset et al., 2005; Charlier et al., 2007), up to more than 500 ppm (e.g., Morisset and Scoates, 2008). Consistently, many authors describe zircon precipitation on ilmenite (e.g., Bingen et al., 2001; Austrheim et al., 2008; Morisset and Scoates, 2008) (see below).

1.3 Occurrences of fine-grain zircon and zircon corona textures

In igneous rocks zircon usually forms euhedral elongated single crystals that are shaped by a combination of prismatic and pyramidal faces, whereas metamorphic zircon is characterized by roundish or irregular shapes (Corfu et al., 2003). Rarely zircon has such unusual morphology, as “saccharoidal”, needle-shaped, or forms coronae (Corfu et al., 2003 and references therein). Mineral-fluid interactions, decomposition of Zr-bearing minerals and exsolution from Zr-bearing accessory and rock-forming minerals can result in such unusual zircon textures (e.g., Corfu et al., 2003 and references therein; Dempster et al., 2004, 2008; Rasmussen, 2005), even at low metamorphic grades (e.g., Dempster et al., 2008).

In natural samples, there are several documented examples of zircon corona textures from igneous and meta-igneous rocks (e.g., Bingen et al., 2001; Söderlund et al., 2004; Austrheim et al., 2008), as well as from metapelites of the Ivrea-Verbano Zone (Pape et al., 2016). Such textures are found in rocks of different metamorphic grades, ranging from prehnite-pumpellyite to eclogite facies (Austrheim et al., 2008). It has been suggested that corona textures may evolve in magmatic rocks as a result of slow cooling (Morisset et al., 2005), and in metamorphic rocks due to mineral-fluid reactions or exsolution with fluid-aided diffusion along grain boundaries during progressive metamorphism (e.g., Bingen et al., 2001).

One of the first descriptions of zircon coronae in mafic meta-igneous rocks was done by Söderlund et al. (2004). The authors attributed formation of secondary fine-grained zircon to the breakdown of baddeleyite in the presence of silica (“saccharoidal” zircon), and to consumption of minerals that have trace amounts of Zr, such as ilmenite (“coronitic” zircon). Both of these textural types of secondary zircon precipitated under prograde heating. Bingen et al. (2001) reported hat-shaped zircon grains and coronae around ilmenite in granulites and amphibolites. Charlier et al. (2007) and Austrheim et al. (2008) reported fine-grained zircon chains around, but at a distance from ilmenite and rutile grains in meta-gabbros. These authors suggested that zircon chains had grown around primary Fe-Ti oxides and, therefore, trace the former grain boundaries. Fine-grained zircon was reported to frame some rutile grains in the metapelitic septae from the Ivrea-Verbano Zone (Ewing et al., 2013; Pape et al., 2016). Morisset and Scoates (2008) report 1-100 µm thick zircon coronae around ilmenite in mafic plutonic rocks. They consider it to be a result of Zr diffusion from ilmenite during slow cooling, aided by hydrothermal fluid.

In this study, we report the two textural types of zircon coronae, characterized by various thickness and aspect ratio, occurring within Fe-Ti oxides in granulitic metapelites. We present evidence that these textures formed as a product of breakdown of Fe-Ti oxides, helping to understand the initial mineral parageneses of the host rock and revealing former reaction fronts.

2 Geological background and sampled locality

The Ivrea-Verbania Zone (IVZ) in Southern Alps (Northern Italy) consists of a NE-SW trending, steeply dipping sequence of meta-sedimentary and meta-igneous basic rocks, ultrabasic mantle tectonites and a large underplated mafic igneous complex (Fig. 1a) (e.g., Brodie and Rutter, 1987; Brodie et al., 1992; Rutter et al., 2007). The sequence predominantly consists of metasedimentary rocks in the SE and metabasic rocks and strongly depleted metapelites in the NW. Metamorphic grade increases progressively from amphibolite facies in the SE to granulite facies in the NW. The IVZ is generally accepted as a section through the lower continental crust that experienced regional metamorphism during the uppermost Palaeozoic, was tectonically overturned and uplifted. IVZ is delimited by the Insubric line in the NW and the Pogallo line in the SE (Brodie and Rutter, 1987; Barboza et al., 1999; Rutter et al., 2007; Quick et al., 2009).

The sampled outcrop near the village Cuzzago (Val d'Ossola) shows massive, non-foliated granulite-facies metasediments, known as stromalites. Stromalite is defined as granulite-facies metapelite, consisting of garnet, sillimanite and biotite with leucocratic patches and veins, composed of quartz, plagioclase and K-feldspar (Bea and Montero, 1999); or as granoblastic graphite-sillimanite-garnet gneiss, one of the components of the IVZ septa (Barboza et al., 1999). Local foliation and/or compositional layering of stromalites is moderately folded (e.g., Kovaleva et al., 2014, their Fig. 1C). Stromalites are broken by orthogonal sets of fractures and crosscut by a contrasting layer of darker gneiss (45°59'46.46" N/8°21'38.65" E, sampled rock, Fig. 1b), which is macroscopically massive to weakly-foliated, broken by abundant faults normal to foliation. The foliation in the layer strikes NW (310°, angle 77°) and the lineation is plunging to the NE (34° towards 038°). No obvious kinematic indicators were observed in the host stromalites or in the sampled dark gneiss. However, detailed structural investigations of the shear zones in the neighboring Val Strona revealed numerous structures that provide consistent evidence of sinistral shear (Siegesmund et al., 2008 and references therein).

The sampled gneiss consists of sillimanite-biotite-garnet intergrowths (Fig. 1c-d). Such restitic mineral assemblage in granulitic metapelites is interpreted to form due to partial melting and separation of leucosome (e.g., Barboza et al., 1999; Luvizotto and Zack, 2009; Ewing et al., 2013; Pape et al., 2016). Thus, the sampled gneiss is a restite, resulted from migmatization at peak granulite-facies conditions (e.g., Ewing et al., 2013). Partial melting is also responsible for apparent layering of host stromalites (Bea and Montero, 1999; Siegesmund et al., 2008), which is composed of alternating leucocratic and melanocratic layers.

The investigated sample came from the north-western part of the IVZ, where metapelites and metagabbro were re-equilibrated under granulite-facies conditions prevailing during crustal attenuation/extension and contemporaneous magmatic underplating between 315 Ma and 270 Ma (Rutter et al., 2007; Quick et al., 2009; Sinigoi et al., 2011; Klötzli et al., 2014). *P-T* estimates in the neighbouring valleys, Val Strona and Val d'Ossola, indicated granulite-facies *P-T* metamorphic conditions in the metapelites at a maximum of 750±50 °C and 0.6±0.1 GPa (Sills, 1984). Zr-in-rutile temperatures of up to 850–930 °C were obtained for granulite-facies metapelites from Val d'Ossola (Luvizotto and Zack, 2009).

Ubiquitous faulting of restitic material and both faulting and folding of host stromalite is due to intensive deformation operated in granulitic metapelites during a long-time span after peak metamorphism (Siegesmund et al., 2008). According to these authors brittle and ductile deformation acted simultaneously during formation of shear zones, and their close interactions resulted in complex deformation microstructures.

3 Sample preparation and analytical methods

Zircon textures have been examined *in situ* using polished thin sections that were mechanically prepared with a final polish using 0.25 µm diamond paste. Zircon grains were identified by backscattered-electron (BSE) imaging, and additionally characterized by cathodoluminescence (CL) imaging for the internal growth features, using a FEI Inspect S scanning electron microscope equipped with a Gatan MonoCL system (Faculty of Earth Sciences, Geography and Astronomy, University of Vienna, Austria). Imaging conditions were at 10 kV accelerating voltage, CL-image resolution of 1500*1500 to 2500*2500

pixels using a dwell time of 80.0-150.0 ms and probe current 4.5-5.0 nA. Qualitative chemical compositions of host phases to zircon were made using an EDX spectrometer. Orientation contrast images of zircon grains (e.g., Fig. 2) were taken using a forescatter electron (FSE) detector on a chemically polished sample surface. FSE detector is mounted on the EBSD-tube of a FEI Quanta 3D FEG instrument (Faculty of Earth Sciences, Geography and Astronomy, University of Vienna, Austria), which is equipped with a Schottky field emission electron source. Electron beam conditions were 15 kV accelerating voltage, 2.5-4 nA probe current using the analytic mode. Stage settings were at 70° tilt and 14-16 mm working distance. Full quantitative chemical compositions of host minerals (Tables 1-2) were determined by Cameca SX 100 electron microprobe equipped with 4 WDS spectrometers and an EDX system for high quality of quantitative chemical analyses (Faculty of Earth Sciences, Geography and Astronomy, University of Vienna, Austria). Operating conditions were 15 kV accelerating voltage and 100 nA probe current. The detection limits in [ppm] for each microprobe analysis point are presented in Supplemental Table S1.

4 Results

4.1. Microscopic description

The generally restitic mineralogy of the sample is composed of garnet, biotite and sillimanite with minor amounts of cordierite, ilmenite, rutile, K-feldspar and quartz (Fig. 1c-f). The primary mineralogy indicates prograde/peak mineral paragenesis, which consists of biotite, sillimanite and garnet. The foliation is formed by a fabric of elongated garnet and sillimanite crystals 0.5-1 mm in length that compose 80-90 % of the sample (Fig. 1c-d). The stretching lineation is formed by elongated biotite crystals. Biotite contains numerous micrometer-size apatite needles and is mostly replaced by chlorite. Primary metamorphic fabric is crosscut by several generations of veins/fractures (Fig. 2c-f), which were formed during cataclastic deformation and shear zone development (e.g., Siegesmund et al., 2008). Fractures are filled with post-peak and late hydration mineral assemblages. The earlier generation of veins is mostly composed of Fe-Ti oxides and their intergrowths with quartz (Fig. 1c-d, black material). Fe-Ti oxides form aggregates with lobate boundaries with the primary minerals (garnet and sillimanite) (Fig. 1e-f). The network of veins of later generation cross-cuts the veins of earlier generation or follows their contacts. These later veins are more abundant than earlier ones and are composed of fine-grained phyllosilicates, such as chlorite, muscovite/phengite, and also may contain K-feldspar patches in the vein cores (Fig. 1c-d, grey-brown material; Table 1). Abundance of phyllosilicates indicates post-metamorphic hydration reactions. Large (up to 2 mm in length and 0.3 mm thick) elongate quartz aggregates generally follow the vein distribution (Fig. 1d, bottom part). Veins and fractures form a conjugated orthogonal network, stretching in at least two directions in 2D section.

Accessory minerals are zircon and monazite (e.g., Figs. 1f; 2). Where hosted by garnet, zircon forms roundish elongated crystals with aspect ratios from 1:1 to 1:3, and lengths from 30 to 100 µm (Fig. 2a). Where forming intergrowths with sillimanite, zircon reveals well-developed faces and forms triple junctions with the adjacent sillimanite grains (Fig. 2b), reflecting equilibration growth with sillimanite during prograde and peak metamorphism. Where hosted by fine-grained material that fills fractures, zircon crystals are elongated, with an aspect ratio from 1:2 to 1:3; these grains are fractured and fragmented. The fragments have irregular dissolved boundaries and show evidence of crystal-plastic deformation (Fig. 2c). Vermicular- and hat-shaped zircon aggregates and zircon coronae are spatially associated with each other and occur within ilmenite-rutile-quartz or rutile-quartz clusters/intergrowths (Figs. 3-5), which fill transgranular fractures and pockets in the gneiss (e.g., Fig. 4a).

4.2 Zircon microstructures and textures

Zircon textures reported in this study are coronae, by which we mean thin envelopes or shells in 3D. Accordingly, in the 2D plane of a sample they have “thread”- or “worm”-like shape (depending on the thickness and aspect ratio). Zircon coronae in

our sample occur as two main textural types. The first type is referred as “vermicular-shaped” (coarser-grained) aggregates, which have thickness $\geq 5 \mu\text{m}$, and aspect ratio 1:4 to 1:20. The second type is referred as “corona” (finer-grained) zircon aggregates, which have thickness $\leq 1 \mu\text{m}$ and aspect ratio approximately 1:100 (e.g., Figs. 3-4). There is also a third (subordinate) coronae type: “hat”-shaped aggregates that are the result of zircon coronae overgrowth on preexisting (probably, detrital) grains.

4.2.1 Vermicular textures

This textural type occurs as lamellae-like intergrowths with rutile. Some vermicular-shaped zircon grains are hosted by thin rutile-quartz intergrowths, where rutile forms $< 1 \mu\text{m}$ thin and 1-3 μm long needles (Fig. 3b, matrix). Such needle shapes are evidence of rapid rutile recrystallization and re-equilibration during the metamorphic evolution.

Figure 3a shows a zircon aggregate composed of three large vermicular-shaped grains (indicated by “V”, enlarged in Fig. 3b, c, e). These vermicular grains are 5 to 15 μm thick and 20 to 50 μm long and have diffuse or “auroral-light” (Corfu et al., 2003) CL zoning (Fig. 3b, c, e). Vermicular-shaped grains have curved (Fig. 3b) or ragged (Fig. 3e) boundaries, crescent-like shape (Fig. 3c, e), and are commonly broken with transgranular fractures (Fig. 3b, e). Some of these fractures are traced in the host rock and filled with fine-grained phyllosilicates (Fig. 3e), which suggests that vermicular zircon predates the cataclasis and hydration with phyllosilicate growth. Furthermore, some fractures in vermicular grains (Fig. 3e) are partially healed by low-CL zircon material. This indicates that some precipitation of zircon has occurred after fracturing.

Another example of vermicular-shaped zircon aggregate is presented in Figure 4. This texture is found in a vein of early generation filled by the rutile-quartz intergrowths and elongate aggregates of quartz (Figs. 1d; 4a). A large zircon aggregate has W-shape and consists of two major fragments (Fig. 4b). The thickness of the vermicular zircon varies from 5 to 20 μm , and the total length is about 200 μm . The W-shaped vermicular aggregate shows diffuse CL-zoning (Fig. 4d). The lower part of this aggregate used to extend to the right (Fig. 4c) and connect with the smaller vermicular grain at the right-hand side from the W-shaped grain (Fig. 4a). This 50- μm long extension was removed by subsequent polishing. The lower right tip of the aggregate drops below the surface plane of the thin section. The CL image and the EDX map of Zr distribution reveal the blurred trace around the lower right tip (Fig. 4d-e, grey arrows). This indicates that the zircon aggregate continues deeper into the sample at a shallow angle, and its signal is documented by CL and EDX from a few μm below the surface. As such the aggregate represents an envelope in 3D. The W-shaped zircon grain is plastically-deformed in its central part, which is indicated by an orientation contrast image (Fig. 4f). Rotation of the lattice reaches 7° with respect to the undeformed lattice (Kovaleva et al., 2016), indicating that this vermicular zircon grain predated shearing and ductile deformation.

Vermicular aggregates presented in Figures 3 and 4 are associated with coronae textures, unlike aggregates in Figure 5a. These aggregates are fractured and hosted by a rutile-phyllosilicate aggregate, which fills the pocket between sillimanite and garnet (“V” in Fig. 5a).

4.2.2 Coronae textures

The matrix around some vermicular grains (Figs. 3c-e; 4c) contains abundant and continuous thin zircon coronae (“C” in Figs. 3 a, c-e; 4a-e; 5) and fine-grained zircon chains (“Ch” in Figs. 3d; 4e). Coronae are $\leq 1 \mu\text{m}$ thick, and are up to 200 μm long. They can be observed anywhere around and within rutile-quartz-phyllosilicates, ilmenite-rutile and ilmenite-rutile-quartz aggregates (Figs. 3-5). Coronae are distributed rather randomly and commonly found in the presence of larger zircon grains, which can be vermicular-shaped aggregates (e.g., Figs. 3-4), detrital grains (e.g., Fig. 5a, b, d) or peak metamorphic grains (e.g., Fig. 5c). At the same time, not all rutile-quartz intergrowths (Fig. 1e-f; 5a) and not all vermicular-shaped grains (“V” in Fig. 5a) are associated with zircon coronae.

Both zircon coronae and fine-grained chains have distinguishable CL-responses (Figs. 3c-e; 4d). Coronae occur as continuous threads that form splits (Figs. 3e; 4e), or isolated tangles (Fig. 3d). Especially dense network of zircon coronae is presented in

Figure 3d. Coronae are commonly attached to the larger vermicular zircon grains (Figs. 3c-e; 4b-c). Some coronae follow the phase boundaries between rutile-quartz aggregates and quartz (Figs. 3a; 4c; 5d) or rutile-quartz aggregates and sillimanite (“C” in Fig. 5b-c). Some thin zircon coronae extend outside of rutile-quartz intergrowths and fill fractures in quartz and garnet (Figs. 3a and 5c accordingly, circle), which suggests zircon coeval- to post-fracturing precipitation.

5 4.2.3 “Hat” textures

The rutile-ilmenite intergrowths fill a fracture in garnet adjacent to a rectangular zircon grain (Fig. 5a). Zircon coronae trace the boundary between garnet and rutile-ilmenite intergrowths and are connected to the rectangular zircon grain, so that the latter acquires a hat-like shape (“*Hat*” in Fig. 5a, after Bingen et al., 2001). Another example of similarly-formed zircon aggregate does not have such developed “hat” shape. It is a roundish zircon grain (“*Zrn*” in Fig. 5d), which is spatially associated with coronae and has short coronae outgrowths pointed towards the rutile-quartz aggregate.

4.3 Microprobe data

Mineral electron microprobe data are presented in Tables 1 and 2. These data is used to determine the temperature of metamorphism using the garnet-biotite thermometer and to support the suggestion of possible mineral-fluid reactions. The X_{Fe} of garnet is systematically lower in the cores, than in the rims and in the smaller fragments. The same applies to the biotite (Table 1). Garnet rims are also systematically enriched in Mn, compared to the cores. Compositions of Fe-Ti oxides (Table 2) demonstrate that rutile is much higher in SiO_2 content, than ilmenite. Rutile is also slightly enriched in such elements as Al, Cr, and Nb, but lower in Mn (Table 2), compared to ilmenite.

5 Discussion

5.1 Mineral reactions

Mineral textures in the studied sample provide important information about the reactions that could have enhanced the growth of zircon coronae during metamorphism. We suggest the following reaction sequence: (1) formation of peak metamorphic phases and partial melting of the metapelites; (2) initial resorption of peak metamorphic phases and crystallization of interstitial ilmenite with lobate boundaries in fractures; (3) retrograde metamorphism, further resorption and fracturing of the high-temperature phases, hydration reactions with formation of phyllosilicates and decomposition of ilmenite to rutile; (4) further cooling, recrystallization of rutile.

Temperature estimations were done by the garnet-biotite thermometer using microprobe data (Table 1). Various calibrations of this geothermometer (Thompson, 1976; Holdaway and Lee, 1977; Ferry and Spear, 1978; Hodges and Spear, 1982; Perchuk & Lavrent’eva, 1983; Bhattacharya et al., 1992) gave temperatures for garnet-biotite preserved cores of 570-700 °C; for inner rims 800-860 °C; and for outer rims 820-1090 °C. Estimations were done for pressures of 0.7 and 1.0 GPa. Pressure variations did not have any significant effect on the resulting temperatures. It is, however, possible, that garnet and biotite rims were affected by diffusion from the host environment during retrograde metamorphism. Mineral textures (Figs. 1e-f, 2c, 4a, 5) and microprobe analyses (Table 1) indicate that the initial granulite-facies garnet, biotite and sillimanite were intensely altered and resorbed. The fragments of garnet and sillimanite have ragged edges and are plastically deformed, dissolved and altered. Mn and Fe, enriched in the rims of large garnet grains and in small garnet fragments, suggest garnet resorption and hydration during retrograde metamorphism (e.g., Tuccillo et al., 1990) after peak metamorphism. Thus, garnet rims do not indicate peak metamorphic temperatures, therefore the rim temperatures are erroneous. More likely, peak metamorphic temperatures in this IVZ section were between 700 and 860 °C (temperatures obtained for the cores and inner rims), in agreement with previous estimations (Sills, 1984; lowermost estimations of Luvizotto and Zack, 2009).

Pockets and fractures in garnet and sillimanite are filled with Fe-Ti oxide aggregates with lobate boundaries. Thus, ilmenite probably crystallized from the partial melt and/or fluid after the formation of peak metamorphic phases, and after their resorption was initiated. Occasionally, veins with Fe-Ti oxides are associated with quartz aggregates, so quartz possibly formed in early generation of veins together with ilmenite. Ubiquitous fracturing of the rock (e.g., Fig. 1c-d) and crystal-
5 plastic deformation of zircon (Figs. 2c; 4f) indicate the extreme conditions of post-peak metamorphism deformation (e.g., Siegesmund et al., 2008).

Further retrograde (greenschist-facies) metamorphism lead to hydration reactions and formation of veins filled with phyllosilicates and K-feldspar. The following features are regarded as evidence for intensive mineral-fluid reactions in the dry restitic granulite-facies rock (e.g., Rajesh et al., 2013): reaction rims around fragments of granulite-facies minerals (e.g., Fig. 1e); fine-grained phyllosilicate mixture that fills fractures (e.g., Fig. 1c-d, f); quartz veins (Figs. 1d; 4a); alteration of biotite with chloritization and exsolution of apatite needles. Water-rich fluids could have been sourced from the decomposing biotite (e.g., Pape et al., 2016). Rare ilmenite cores are surrounded by rutile rims (Figs. 1e-f; 5a-b, d). Thus, post-peak, trace element-rich ilmenite was partially or entirely decomposed to rutile, which resulted in the migration of excess Fe into the matrix and into the garnet and biotite rims. Fe from ilmenite and Mg diffusing out of garnet and biotite rims are needed to compensate the
10 formation of the large volume of Mg-Fe phyllosilicates in the second generation of veins (Figs. 1c-d; 2c; Table 1). Potassium from biotite and Al from sillimanite would allow/favor the growth of K-feldspar in the veins (e.g., Fig. 4a). Excess Hf and Zr from breaking down ilmenite is responsible for the formation of zircon intergrowths with rutile (thick vermicular-shaped grains, e.g., Figs. 3b, c, e; 4a-c). Newly formed rutile was enriched in trace elements, possibly due to the decreased volume of Fe-Ti oxides (e.g., Austrheim et al., 2008). This rutile is also enriched in silica (Table 2) that requires sourcing SiO₂ from the
20 environment and may indicate solid solution of SiO₂ in rutile (Taylor-Jones and Powell, 2015), which would play a role in a further reaction. Excess Si, possibly derived from the fragmentation and dissolution of garnet and sillimanite, would form quartz veins and react with Zr to form zircon coronae. As for the apatite formation, P, F, Cl and OH could be derived either from de-composing biotite, or were delivered by the water-rich fluid as components of a water brine from, for example, dissolution of monazite. However, the occurrence of apatite needles inside altered biotite grains points to genetic relationships
25 between these two minerals.

Further cooling caused non-equilibrium recrystallization of rutile. Ewing et al. (2013) described partial replacement of rutile by other phases, characteristic for all granulitic metapelites from IVZ. In our sample, we observe recrystallization of rutile with the formation of fine rutile-quartz intergrowths and thin zircon coronae around them. This took place during later stages of the rock evolution, when the temperature decreased and caused the Zr solubility in rutile to decrease. Therefore, we suggest
30 the following stylized reaction (1):



Where Rut_{Zr-Hf} (= SiO₂-, Zr- and Hf-bearing rutile) resulted from decomposition of ilmenite, Rut_2 (= SiO₂-, Zr- and Hf-depleted rutile) forms intergrowth with quartz (Qtz) and zircon coronae (Zrn_{cor}). Quartz was exsolved from SiO₂-rich rutile and formed thin intergrowths with the newly crystallized, trace element-depleted rutile (e.g., Figs. 3; 4c). Zircon coronae produced in this way are very thin suggesting slow reaction rates and a limited solubility of Zr in rutile at low temperature (Tomkins et al., 2007; Ewing et al., 2013, 2014; Pape et al., 2016).

5.2 Zircon textures

40 Zircon grains hosted by garnet, sillimanite and fine-grained phyllosilicate matrix (Fig. 2a-c accordingly) represent detrital grains, enclosed in the main mineral phases during metamorphism. Zircon in garnet shows euhedral shapes and concentric growth zoning (Fig. 2a), indicating capture of detrital grains by metamorphic garnet. Zircon enclosed in sillimanite has detrital

cores that are overgrown by metamorphic rims, which are in growth equilibrium with sillimanite (Figs. 2b; 5c). After the peak metamorphic conditions these detrital zircon grains seem to have been mostly inert and, therefore, are well-preserved. Zircon grains hosted by the fine-grained phyllosilicate matrix in hydration veins are the most deformed and fractured, and show dissolved/corroded surfaces (Fig. 2c). These latter grains were probably exposed to the post-peak metamorphic fluids. The dissolved material from their surfaces might have been transported with a fluid and serve as a source for the zircon coronae precipitation. We suggest, however, that this was not the main source of Zr for coronae zircon, and that coronae mainly precipitated from Fe-Ti oxides.

Vermicular-shaped aggregates of zircon (or thick coronae) and thin coronae (Figs. 3-5) have different origin than the detrital grains (Fig. 2). It has been shown that zircon can grow from other Zr-bearing phases as a result of mineral reactions and as a mineral response to the changing conditions (Bingen et al., 2001; Söderlund et al., 2004; Austrheim et al., 2008; Ewing et al., 2013, 2014; Kohn et al., 2015; Pape et al., 2016). Metamorphic (coronae) zircon in granulite-facies rocks may not be a product of peak metamorphism, but precipitate during the retrograde evolution (Tomkins et al., 2007). Zircon coronae textures are the evidence of zircon formation due to breakdown of Zr-bearing Fe-Ti oxides (e.g., Davidson and van Breemen, 1988; Fraser et al., 2004; Degeling et al., 2001). However, taking into account complexity of the textures and the fact that they were formed in more than one stage, we do not entirely exclude the possibility of exsolution of zircon from, for example, Zr-bearing rutile; or exsolution from ilmenite *before* its breakdown (e.g., Bingen et al., 2001; Tomkins et al., 2007; Ewing et al., 2013; Pape et al., 2016). The possibility of the two-stage exsolution of Zr from Fe-Ti oxides was suggested by Ewing et al., (2013). Our textural observations are consistent with this idea. The sketch in Fig. 6 shows stages (1) and (2) of zircon coronae formation:

1. After the peak metamorphic conditions, ilmenite was the main host phase for Zr, together with the primary detrital zircon (Bingen et al., 2001), and at the initial cooling stage it partially decomposed to rutile (Ewing et al., 2013). The expelled Zr was not entirely incorporated into the growing rutile, and precipitated as new zircon (Fig. 6). Formation of zircon vermicular aggregates preceded brittle and ductile deformation of the rock. Vermicular grains in 3D volume represent curved envelope-type aggregates (Fig. 4b-e), thus resemble coronae in shape (e.g., Bingen et al., 2001). However, they are thicker than what was previously observed for zircon. Therefore, we interpret vermicular grains as evolved coronae. The thickness of these coronae should be controlled by reaction and cooling rates (Kohn et al., 2015). At comparatively high temperatures and slow reaction rates, zircon coronae grew thick, and formed lamellae-like intergrowths with the newly forming rutile (e.g., Fig. 4a-b). Formation of similar exsolution lamellae was described for many metamorphic minerals (e.g., Zhang and Liou, 2000).

2. In contrast with the thick coronae, formation of thin zircon coronae during the reaction (1) occurred at lower temperatures, simultaneous with or soon after fracturing, as some of these coronae fill fractures (Figs. 3a, e; 5c). Fracture filling also indicates local Zr mobility, aided by fluid. At lower temperatures rutile recrystallizes, and incorporates progressively less Zr (Ewing et al., 2013) than the high-temperature rutile, according to Zr-in-rutile thermometer models (Watson et al., 2006; Ferry and Watson, 2007). Thus, the excess Zr in the cooling system should be hosted by other Zr-bearing phases, most commonly by zircon (e.g., Pape et al., 2016). Crystallization of thin ($\leq 1 \mu\text{m}$) zircon coronae and thin needle-shaped 1-3 μm long rutile grains indicates rapid cooling resulting in non-equilibrium recrystallization of Zr-bearing rutile, when Zr and Hf were expelled from the host grain (Ewing et al., 2013). This occurred after the initial cooling, during the exhumation stage (Ewing et al., 2014; Kohn et al., 2015). The rutile grains that did not recrystallize usually occur in intimate contact with the rutile-quartz intergrowths and are separated from them by zircon coronae (e.g., Fig. 4c). Thus, it is possible to indicate the direction of recrystallization front. Earlier zircon grains serve as the nucleation spots for thin zircon coronae, which is similar to the low-temperature textures described by Rasmussen (2005).

Zircon coronae in our sample are different from those described in Bingen et al. (2001), Charlier et al. (2007), and Morisset et al. (2008), who only observed coronae at the boundary of the (former) ilmenite grains. The described textures are also different from the coronae reported by Austrheim et al., (2008) and Pape et al., (2016), where zircon forms continuous chains or closed

contours of small grains. However, zircon coronae in all cases (described in earlier literature and here) represent 3D shells/envelopes around the reacting grains (Bingen et al., 2001). Textures, indicating reaction fronts of rutile recrystallization, have not been found by Pape et al., (2016), even though these authors searched these features. In contrast, in our sample we observe former reaction fronts formed by tangled and split zircon coronae within recrystallized rutile aggregates. Split coronae may show different reaction fronts converging to one point (Fig. 3e; 4e). The reaction fronts moved from rutile-quartz intergrowths towards unreacted rutile, forming rutile-quartz embayments in the latter, rimmed by zircon coronae (e.g., Fig. 4c, arrows show the directions of the reaction front). The chains of small zircon grains are effectively the same as zircon coronae and are similar to those described in Austrheim et al., (2008). The hat-shaped zircon grains are formed by coronae that are connected to the larger zircon grains at the boundary with the rutile (Fig. 5a), and thus represent aggregates formed by different zircon generations.

Not all rutile aggregates in our sample are associated with zircon coronae. Similarly, the diversity in appearance of rutile grains from the same sample was described by Pape et al., (2016) for IVZ metapelites. This can be due to (a) thin section cut that does not reveal associated coronae, or (b) only local recrystallization of rutile (e.g., due to locally elevated strain, or inhomogeneous distribution of fluid), so that the rest of rutile still contains significant amount of Zr. In case of (b), Zr-in-rutile thermobarometry can be applied to Zr-enriched rutile, to estimate the temperature of ilmenite decomposition and coeval formation of vermicular zircon (e.g., Ewing et al., 2013).

6 Conclusions and implications

In our study, we demonstrate that zircon coronae can form within and around Fe-Ti oxides in metapelites, during cooling and hydration after peak granulite-facies metamorphism. Zircon formed as a result of breakdown (exsolution) of ilmenite and rutile. Formation of zircon coronae occurred in two distinct stages and resulted in (1) thick (5-20 μm) vermicular-shaped grains presumably formed during breakdown of Zr-bearing ilmenite to Zr-bearing rutile, and in (2) thin ($\leq 1 \mu\text{m}$) corona aggregates and submicron-grain chains formed due to low-temperature recrystallization of Zr-bearing rutile (Fig. 6). Two zircon-forming episodes were separated in time and represent two evolution stages of the sampled rock, and could be therefore connected with the evolution of the Ivrea-Verbano Zone at a larger scale.

We report a new textural relationship between zircon and host rutile grains, as only exsolution needles of zircon in rutile and small zircon grains framing rutile were described in metapelites before (e.g., Ewing et al., 2013; Pape et al., 2016). We describe zircon coronae in metasedimentary rocks, in contrast with the previous authors, who reported similar textures in metaigneous rocks (e.g., Bingen et al., 2001; Austrheim et al., 2008 and references therein).

The detail study of the zircon corona textures can have a significant influence on the trace element balance calculations for the bulk rock, provides a tool for reconstruction of metamorphic mineral-fluid reactions, and helps to derive the direction of rutile recrystallization reaction fronts. Moreover, precipitated zircon can potentially be used in geochronology for *in situ* dating of metamorphic evolution stages and may yield the isotopic age of metamorphic reactions (e.g., Charlier et al., 2007; Ewing et al., 2013). The trace elements in zircon can be measured to fingerprint different fluid infiltration/recrystallisation events. They can be used in thermobarometry for estimating the *P-T* conditions of the ilmenite breakdown and formation of Zr-bearing rutile, and the *P-T* conditions of the Zr exsolution from rutile. For the latter, Zr-in rutile, Ti-in zircon and Si-in rutile thermometers can be applied (e.g., Ewing et al., 2013; Pape et al., 2016).

Authors' contribution

E. Kovaleva and U. Klötzli were responsible for sampling. E. Kovaleva performed laboratory work, SEM and EMPA analysis, data reduction and analysis, and drafted the manuscript. H. Austrheim and U. Klötzli conceptualized the study, oversaw the progression of the work and advised on interpretation.

Acknowledgments

- 5 This study was funded by the University of Vienna (doctoral school “DOGMA”, project IK 052). The authors acknowledge access to the Laboratory for scanning electron microscopy and focused ion beam applications, Faculty of Earth Sciences, Geography and Astronomy at the University of Vienna (Austria), and specifically Gerlinde Habler, who acquired orientation contrast images presented in this study. The authors are grateful to Rainer Abart, Claudia Beybel, Franz Biedermann, Sigrid Hrabe, Hugh Rice, and all colleagues of the FOR741 research group for fruitful discussions; to the Geologische Bundesanstalt
- 10 (GBA) of Austria and Christian Auer for access to the SEM; to the Department of Geology in University of the Free State for the support in writing this paper. Comments of Nigel Kelly, Fernando Corfu, and Roberto Weinberg helped to improve the text greatly.

References

- Austrheim, H., Putnis, C. V., Engvik, A. K., and Putnis, A.: Zircon coronae around Fe–Ti oxides: a physical reference frame
- 15 for metamorphic and metasomatic reactions, *Contrib. Mineral. Petr.*, 156, 517–527, 2008.
- Barboza, S. A., Bergantz, G. W., and Brown, M.: Regional granulite facies metamorphism in the Ivrea zone: is the Mafic Complex the smoking gun or a red herring? *Geology*, 27, 447–450, 1999.
- Bea, F. and Montero, P.: Behavior of accessory phases and redistribution of Zr, REE, Y, Th, and U during metamorphism and partial melting of metapelites in the lower crust: An example from the Kinzigite Formation of Ivrea-Verbano, NW Italy,
- 20 *Geochim. Cosmochim. Acta*, 63, 1133–1153, 1999.
- Bhattacharya, A., Mohanty, L., Maji, A., Sen, S. K., and Raith, M.: Non-ideal mixing in the phlogopite-annite binary: constraints from experimental data on Mg-Fe partitioning and a reformulation of the biotite-garnet geothermometer, *Contrib. Mineral. Petrol.*, 111, 87–93, 1992.
- Bingen, B., Austrheim, H., and Whitehouse, M.: Ilmenite as a source for zirconium during high-grade metamorphism?
- 25 *Textural evidence from the Caledonides of western Norway and implications for zircon geochronology*, *J. Petrol.*, 42, 355–375, 2001.
- Brodie, K. H. and Rutter, E. H.: Deep crustal extensional faulting in the Ivrea zone of northern Italy, *Tectonophysics*, 140, 193–212, 1987.
- Brodie, K. H., Rutter, E. H., and Evans, P.: On the structure of the Ivrea-Verbano Zone (northern Italy) and its implications for
- 30 present-day lower continental crust geometry, *Terra Nova*, 4, 34–39, 1992.
- Charlier, B., Skår, Ø., Korneliussen, A., Duchesne, J.-C., and Auwera, J. V.: Ilmenite composition in the Tellnes Fe–Ti deposit, SW Norway: fractional crystallization, postcumulus evolution and ilmenite–zircon relation, *Contrib. Mineral. Petr.*, 154, 119–134, 2007.
- Corfu, F., Hanchar, J. M., Hoskin, P. W. O., and Kinny, P.: Atlas of zircon textures, in: *Zircon, Reviews in Mineralogy and*
- 35 *Geochemistry*, 53, Hanchar, J. M. and Hoskin, P. W. O. (Eds.), Mineralogical Society of America, Washington DC, 468–500, 2003.
- Davidson, A. and van Breemen, O.: Baddeleyite-zircon relationships in coronitic metagabbro, Grenville Province, Ontario: implications for geochronology, *Contrib. Mineral. Petr.*, 100, 291–299, 1988.

- Degeling, H., Eggins, S., and Ellis, D. J.: Zr budgets for metamorphic reactions, and the formation of zircon from garnet breakdown, *Min. Mag.*, 65, 749-758, 2001.
- Dempster, T.J., Hay, D.C., and Bluck, B.J.: Zircon growth in slate, *Geology*, 32, 221–224, 2004.
- Dempster, T. J., Hay, D. C., Gordon, S.H., and Kelly, N. M.: Micro-zircon: origin and evolution during metamorphism, *J. Metamorph. Geol.*, 26, 499-507, 2008.
- Ewing, T. A., Hermann, J., and Rubatto, D.: The robustness of the Zr-in-rutile and Ti-in-zircon thermometers during high-temperature metamorphism (Ivrea-Verbano Zone, northern Italy), *Contrib. Mineral. Petr.*, 165, 757-779, 2013.
- Ewing, T. A., Rubatto, D., and Hermann, J.: Hafnium isotopes and Zr/Hf of rutile and zircon from lower crustal metapelites (Ivrea-Verbano Zone, Italy): Implications for chemical differentiation of the crust, *Earth. Planet. Sc. Lett.*, 389, 106-118, 2014.
- 10 Ferry, J. M. and Spear, F.S.: Experimental calibration of the partitioning of Fe and Mg between biotite and garnet, *Contrib. Mineral. Petrol.*, 66, 113-117, 1978.
- Ferry, J. and Watson, E. B.: New thermodynamic models and revised calibrations for the Ti-in-zircon and Zr-in-rutile thermometers, *Contrib. Mineral. Petr.*, 154, 429-437, 2007.
- Fraser, G., Ellis, D., and Eggins, S.: Zirconium abundance in granulite-facies minerals, with implications for zircon geochronology in high-grade rocks, *Geology*, 25, 607-610, 1997.
- 15 Fraser, G. L., Pattison, D. R. M., and Heaman, L. M.: Age of the Ballachulish and Glencoe Igneous Complexes (Scottish Highlands), and paragenesis of zircon, monazite and baddeleyite in the Ballachulish Aureole. *J. Geol. Soc. London*, 161, 447–462, 2004.
- Harley, S. L., Kelly, N. M., and Möller, A.: Zircon behaviour and the thermal histories of mountain chains, *Elements*, 3, 25–30, 2007.
- 20 Harrison, M.T. and Watson, E. B.: Kinetics of zircon dissolution and zirconium diffusion in granitic melts of variable water content., *Contrib. Mineral. Petr.*, 84, 66-72, 1983.
- Hay, D. C. and Dempster, T. J.: Zircon behavior during low-temperature metamorphism, *J. Petrol.*, 50, 571-589, 2009.
- Hay, D. C., Dempster, T. J., Lee, M. R., and Brown, D. J.: Anatomy of a low temperature zircon outgrowth, *Contrib. Mineral. Petr.*, 159, 81-92, 2010.
- 25 Hodges, K. V. and Spear, F. S.: Geothermometry, geobarometry and the Al_2SiO_5 triple point at Mt. Moosilauke, New Hampshire, *Am. Mineral.*, 67, 1118-1134, 1982.
- Holdaway, M. J. and Lee, S. M.: Fe-Mg cordierite stability in high grade pelitic rocks based on experimental, theoretical and natural observations, *Contrib. Mineral. Petr.*, 63, 175-198, 1977.
- 30 Kelsey, D. E. and Powell, R.: Progress in linking accessory mineral growth and breakdown to major mineral evolution in metamorphic rocks: a thermodynamic approach in the $\text{Na}_2\text{O}-\text{CaO}-\text{K}_2\text{O}-\text{FeO}-\text{MgO}-\text{Al}_2\text{O}_3-\text{SiO}_2-\text{H}_2\text{O}-\text{TiO}_2-\text{ZrO}_2$ system. *J. Metamorph. Geol.*, 29, 151-166, 2011.
- Kelsey, D. E., Clark, C., and Hand, M.: Thermobarometric modelling of zircon and monazite growth in melt-bearing systems: examples using model metapelitic and metapsammitic granulites, *J. Metamorph. Geol.*, 26, 199-212, 2008.
- 35 Klötzli, U. S., Sinigoi, S., Quick, J. E., Demarchi, G., Tassinari, C. C. G., Sato, K., and Günes, Z.: Duration of igneous activity in the Sesia Magmatic System and implications for high-temperature metamorphism in the Ivrea–Verbano deep crust, *Lithos*, 206-207, 19-33, 2014.
- Kohn, M. J., Corrie, S. L., and Markley, C.: The fall and rise of metamorphic zircon, *Am. Mineral.*, 100, 897-908, 2015.
- Kovaleva, E., Klötzli, U., Habler, G., and Libowitzky, E.: Finite lattice distortion patterns in plastically deformed zircon grains, *Solid Earth*, 5, 1099-1122, 2014.
- 40 Kovaleva, E., Klötzli, U., and Habler, G.: On the geometric relationship between deformation microstructures in zircon and the kinematic framework of the shear zone, *Lithos*, 262, 192-212, 2016.

- Lucassen, F., Dulski, P., Abart, R., Franz, G., Rhede, D., and Romer, R. L.: Redistribution of HFSE elements during rutile replacement by titanite, *Contrib. Mineral. Petr.*, 160, 279-295, 2010.
- Luvizotto, G. L. and Zack, T.: Nb and Zr behavior in rutile during high-grade metamorphism and retrogression: an example from the Ivrea-Verbano Zone, *Chem. Geol.*, 261, 303-317, 2009.
- 5 Mohamed, F. H. and Hassanen, M. A.: Geochemical evolution of arc-related mafic plutonism in the Umm Naggat district, Eastern Desert of Egypt, *J. Afr. Earth. Sci.*, 22, 269-283, 1996.
- Morisset, C. E. and Scoates, J. S.: Origin of zircon rims around ilmenite in mafic plutonic rocks of proterozoic anorthosite suites, *Can. Mineral.*, 46, 289-304, 2008.
- Morisset, C. E., Scoates, J. S., and Weis, D.: Exsolution origin for zircon rims around hemo-ilmenite in magmatic Fe–Ti oxide deposits, *Geochimica et Cosmochimica Acta*, 15th Annual V M Goldschmidt Conference, Moscow, Idaho, USA, 21-25 May 10 2005, A16, 2005.
- Moser, D. E., Chamberlain, K. R., Tait, K. T., Schmitt, A. K., Darling, J. R., Barker, I. R., and Hyde, B. C.: Solving the Martian meteorite age conundrum using micro-baddeleyite and launch-generated zircon, *Nature*, 499, 454-458, 2013.
- Möller, A., O'Brien, P. J., Kennedy, A., and Kröner, A.: Polyphase zircon in ultrahigh-temperature granulites (Rogaland, SW 15 Norway): constraints for Pb diffusion in zircon, *J. Metamorph. Geol.*, 20, 727–740, 2002.
- Möller, A., O'Brien, P. J., Kennedy, A., and Kröner, A.: Linking growth episodes of zircon and metamorphic textures to zircon chemistry: an example from the ultrahigh-temperature granulites of Rogaland (SW Norway), in: *Geochronology: Linking the isotopic record with petrology and textures*, 220, Vance, D., Müller, W., and Villa, I.M. (Eds.), *J. Geol. Soc. London Sp. Publ.*, 65-81, 2003.
- 20 Pape, J., Mezger, K., and Robyr, M.: A systematic evaluation of the Zr-in-rutile thermometer in ultra-high temperature (UHT) rocks, *Contrib. Mineral. Petr.*, 171, 44, 2016.
- Perchuk, L. L. and Lavrent'eva, I. V.: Experimental investigation of exchange equilibria in the system cordierite-garnet-biotite, in: *Kinetics and equilibrium in mineral reactions*, Saxena, S.K. (Ed.), Springer, New York, 199-239, 1983.
- Quick, J. E., Sinigoi, S., Peressini, G., Demarchi, G., Wooden, J. L., and Sbisà, A.: Magmatic plumbing of a large Permian 25 caldera exposed to a depth of 25 km, *Geology*, 37, 603-606, 2009.
- Rajesh, H. M., Belyanin, G. A., Safonov, O. G., Kovaleva, E. I., Golunova, M. A., and Van Reenen, D. D.: Fluid-induced dehydration of the paleoarchean Sand River biotite–hornblende gneiss, Central Zone, Limpopo Complex, South Africa, *J. Petrol.*, 54, 41-74, 2013.
- Rasmussen, B.: Zircon growth in very low grade metasedimentary rocks: evidence for zirconium mobility at ~250°C, *Contrib. 30 Mineral. Petr.*, 150, 146-155, 2005.
- Rubatto, D., Müntener, O., Barnhoorn, A., and Gregory, C.: Dissolution-reprecipitation of zircon at low-temperature, high-pressure conditions (Lanzo Massif, Italy), *Am. Mineral.*, 93, 1519-1529, 2008.
- Rutter, E. H., Brodie, K. H., James, T., and Burlini, L.: Large-scale folding in the upper part of the Ivrea-Verbano zone, NW Italy, *J. Struct. Geol.*, 29, 1-17, 2007.
- 35 Siegesmund, S., Layer, P., Dunkl, I., Vollbrecht, A., Steenken, A., Wemmer, K., and Ahrendt, H.: Exhumation and deformation history of the lower crustal section of the Valstrona di Omegna in the Ivrea Zone, Southern Alps, *Geol. Soc. London. Sp. Publ.*, 298, 45-68, 2008.
- Sills, J. D.: Granulite facies metamorphism in the Ivrea zone, NW Italy, *Schweiz. Miner. Petrog.*, 64, 169-191, 1984.
- Sinigoi, S., Quick, J. E., Demarchi, G., and Klötzli, U.: The role of crustal fertility in the generation of large silicic magmatic 40 systems triggered by intrusion of mantle magma in the deep crust, *Contrib. Mineral. Petr.*, 162, 691-707, 2011.
- Söderlund, P., Söderlund, U., Möller, C., Gorbatshev, R., and Rodhe, A.: Petrology and ion microprobe U-Pb chronology applied to a metabasic intrusion in southern Sweden: A study on zircon formation during metamorphism and deformation, *Tectonics*, 23, TC5005, 2004.

- Taylor-Jones, K. and Powell, R.: Interpreting zirconium-in-rutile thermometric results, *J. Metamorph. Geol.*, 33, 115-122, 2015.
- Thompson, A. B.: Mineral reactions in pelitic rocks. II. Calculation of some P-T-X(Fe-Mg) phase relations, *Amer. J. Sci.*, 276, 425-454, 1976.
- 5 Tomkins, H. S., Powell, R., and Ellis, D. J.: The pressure dependence of the zirconium-in-rutile thermometer. *J. Metamorph. Geol.*, 25, 703-713, 2007.
- Tromans, D.: Solubility of crystalline and metamict zircon: A thermodynamic analysis, *J. Nucl. Mater.*, 357, 221-233, 2006.
- Tuccillo, M. E., Essene, E. J., and van der Pluijm, B. A.: Growth and retrograde zoning in garnets from high-grade metapelites: Implications for pressure-temperature paths, *Geology*, 18, 830-842, 1990.
- 10 Vavra, G., Gebauer, D., Schmid, R., and Compston, W.: Multiple zircon growth and recrystallization during polyphase Late Carboniferous to Triassic metamorphism in granulites of the Ivrea zone (Southern Alps): An ion microprobe (SHRIMP) study, *Contrib. Mineral. Petr.*, 122, 337-358, 1996.
- Watson, E. B. and Harrison, M. T.: Zircon saturation revisited: temperature and composition effects in a variety of crustal magma types, *Earth Planet. Sci. Lett.*, 64, 295-304, 1983.
- 15 Watson, E. B., Wark, D. A., Thomas, J. B.: Crystallization thermometers for zircon and rutile, *Contrib. Mineral. Petr.*, 151, 413-433, 2006.
- Wu, Y.-B., Zheng, Y.-F., Zhao, Z.-F., Gong, B., Liu, X., and Wu, F.-Y.: U-Pb, Hf and O isotope evidence for two episodes of fluid-assisted zircon growth in marble-hosted eclogites from the Dabie orogeny, *Geochim. Cosmochim. Acta*, 70, 3743-3761, 2006.
- 20 Zanetti, A., Mazzucchelli, M., Rivalenti, G., and Vannucci, R.: The Finero phlogopite-peridotite massif: an example of subduction-related metasomatism, *Contrib. Mineral. Petr.*, 134, 107-122, 1999.
- Zhang, R. Y. and Liou, J. G.: Exsolution minerals from ultrahigh-pressure rocks, in: *Ultra-high pressure metamorphism and geodynamics in collision-type orogenic belts*, Ernst, W. G. and Liou, J. G. (Eds.), Bellwether Publisher for Geological Society of America, Columbia, 216-228, 2000.
- 25 Zhao, L., Li, T., Peng, P., Guo, J., Wang, W., Wang, H., Santosh, M., and Zhai, M.: Anatomy of zircon growth in high pressure granulites: SIMS U-Pb geochronology and Lu-Hf isotopes from the Jiaobei Terrane, eastern North China Craton, *Gondwana Res.*, 28, 1373-1390, 2015.

30

35

Mineral	SiO ₂	TiO ₂	Al ₂ O ₃	MgO	CaO	MnO	FeO	BaO	Na ₂ O	K ₂ O
Grt core	38.90	0.02	22.22	9.33	1.51	0.31	28.60	n.d.	n.d.	n.d.
Grt core	38.14	0.01	21.69	6.19	1.46	0.43	32.92	n.d.	n.d.	n.d.
Grt core	38.16	0.01	21.70	6.37	1.46	0.49	32.51	n.d.	0.01	n.d.
Grt core	39.01	n.d.	22.15	9.19	1.51	0.36	28.52	n.d.	0.02	n.d.
Grt core	39.10	0.02	22.09	9.26	1.50	0.32	28.80	n.d.	0.02	n.d.
Grt core	38.92	0.03	22.11	9.13	1.46	0.30	28.84	n.d.	0.03	n.d.
Grt core	38.83	0.01	22.00	8.34	1.41	0.35	29.92	n.d.	0.03	n.d.
Grt core	37.80	0.02	22.03	6.75	1.49	0.55	31.69	n.d.	0.01	n.d.
Grt rim	38.81	0.01	22.12	8.58	1.54	0.34	29.44	n.d.	0.01	n.d.
Grt rim	38.81	0.03	22.06	8.28	1.53	0.34	30.31	n.d.	0.03	n.d.
Grt rim	38.95	0.01	21.82	7.73	1.52	0.40	30.77	n.d.	n.d.	n.d.
Grt rim	38.35	0.01	21.95	7.77	1.51	0.42	30.35	n.d.	0.02	n.d.
Grt rim	38.61	0.01	21.59	5.67	1.46	0.52	33.25	n.d.	0.01	n.d.
Grt rim	38.39	0.07	21.78	5.96	1.46	0.53	32.82	n.d.	n.d.	n.d.
Grt rim	37.93	0.21	21.49	5.65	1.52	0.55	32.93	n.d.	0.02	n.d.
Grt rim	38.30	0.07	21.86	6.82	1.45	0.43	31.69	n.d.	n.d.	n.d.
Grt rim	38.34	0.04	21.75	7.15	1.48	0.43	31.37	n.d.	0.01	n.d.
Grt rim	37.35	0.01	21.12	3.85	1.50	0.87	35.51	n.d.	n.d.	n.d.
Grt rim	37.38	0.03	21.12	3.86	1.45	0.81	35.22	n.d.	n.d.	n.d.
Grt rim	37.65	n.d.	21.30	3.98	1.43	0.78	35.34	n.d.	n.d.	n.d.
Bt core	37.15	6.27	15.51	15.79	0.03	0.03	10.75	n.d.	0.11	9.83
Bt core	37.15	1.32	16.53	18.79	0.13	0.03	11.36	n.d.	0.10	9.16
Bt rim	34.81	1.74	17.17	14.41	0.04	n.d.	17.50	n.d.	0.12	7.83
Bt rim	35.22	2.82	16.59	13.55	0.02	0.04	18.27	n.d.	0.10	8.15
Bt rim	35.61	1.46	16.14	14.38	0.16	0.02	17.94	n.d.	0.09	7.38
Bt rim	34.75	1.27	17.16	13.37	0.03	0.04	19.60	n.d.	0.08	7.27
Chl over Bt	29.75	0.03	18.37	16.40	0.10	0.05	22.91	n.d.	n.d.	0.14
Chl over Bt	27.72	0.01	19.47	15.12	0.08	0.06	25.34	n.d.	n.d.	0.05
Chl over Bt	27.29	0.21	19.76	15.84	0.03	0.07	24.21	n.d.	n.d.	0.03
Chl over Bt	27.64	0.28	20.07	16.34	0.04	0.04	23.41	0.04	n.d.	0.04
Chl over Bt	28.09	0.40	19.07	15.97	0.06	0.06	24.07	0.04	n.d.	0.20
Chl new	27.14	0.02	21.48	14.10	0.03	0.09	24.90	n.d.	n.d.	0.07
Chl new	24.84	0.03	22.94	12.98	0.05	0.06	26.44	n.d.	n.d.	0.06
Chl new	28.47	0.02	18.16	15.53	0.06	0.05	24.92	n.d.	0.01	0.06
Chl new	29.00	0.08	18.92	15.73	0.09	0.06	24.07	n.d.	0.02	0.21
Chl new	29.44	0.06	19.27	15.65	0.07	0.06	24.44	n.d.	0.02	0.26
Chl new	28.70	0.02	18.38	15.42	0.08	0.07	25.45	0.05	0.04	0.09
Chl new	29.30	0.04	17.69	15.27	0.08	0.06	25.39	0.02	0.01	0.10
Chl new	31.95	4.44	17.50	11.51	0.04	0.05	21.81	0.04	0.04	4.64
Phyl matrix	44.34	n.d.	31.75	3.84	0.13	n.d.	6.06	0.28	0.33	7.70
Phyl matrix	49.04	0.01	32.24	1.68	0.04	n.d.	1.63	0.17	0.18	10.58
Phyl matrix	45.92	0.01	32.36	2.78	0.12	n.d.	4.12	0.47	0.32	8.63
Phyl matrix	43.30	0.18	32.40	4.12	0.15	0.05	7.16	n.d.	0.33	7.12
Phyl matrix	47.74	0.12	33.88	1.98	0.17	0.01	3.05	n.d.	0.42	8.67
Phyl matrix	44.89	0.21	32.84	3.28	0.10	n.d.	4.87	n.d.	0.37	8.39
Phyl matrix	44.91	0.02	32.38	3.38	0.17	0.02	5.17	n.d.	0.38	7.81
Phyl matrix	38.78	0.05	28.79	6.94	0.10	0.02	12.02	0.19	0.27	4.91
Phyl matrix	45.22	0.03	32.53	3.29	0.09	0.03	4.49	0.73	0.37	8.28
Pheng/Mus	47.45	0.07	35.68	1.31	0.09	n.d.	1.65	0.32	0.40	9.53
Pheng/Mus	48.41	0.17	35.13	1.34	0.14	n.d.	1.46	0.37	0.43	9.19
Pheng/Mus	46.62	0.12	35.34	1.43	0.10	0.01	1.94	0.36	0.45	9.07

Table 1. Results of the microprobe analyses of the rock-forming silicates, n.d. = not detected. Grt = garnet, Bt = biotite, Chl = chlorite, Phyl = phyllosilicate(s), Pheng = phengite, Mus = muscovite.

Mineral	Ta ₂ O ₅	SiO ₂	TiO ₂	Al ₂ O ₃	Cr ₂ O ₃	Nb ₂ O ₃	MgO	MnO	FeO	NiO	Total
Ilm	0.04	0.03	52.82	0.02	n.d.	0.11	0.05	0.85	45.18	n.d.	99.15
Ilm	0.03	0.14	53.07	0.12	0.02	0.12	0.07	0.85	44.30	0.02	98.73
Ilm	n.d.	0.15	53.72	0.12	n.d.	0.04	0.03	0.89	43.56	n.d.	98.52
Rut	n.d.	0.60	98.31	0.22	0.08	0.25	0.04	n.d.	0.44	n.d.	99.92
Rut	n.d.	0.80	98.46	0.26	0.08	0.40	0.01	n.d.	0.40	n.d.	100.42
Rut	n.d.	2.10	93.19	1.42	0.06	0.22	0.60	n.d.	1.46	n.d.	99.03

Table 2. Results of the microprobe analyses of the Fe-Ti oxides, n.d. = not detected. Ilm = ilmenite, Rut = rutile.

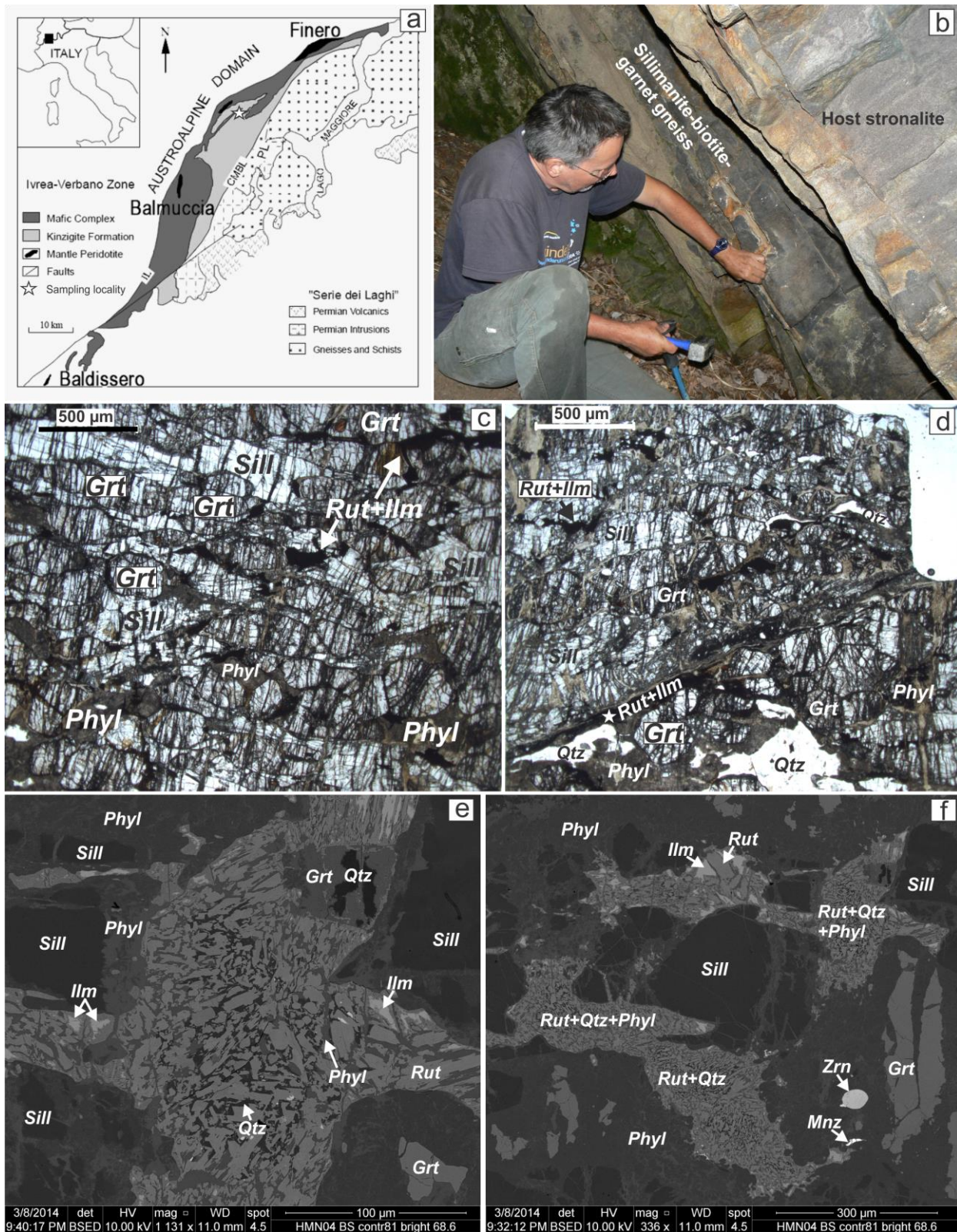


Figure 1: (a) Geological map of the Ivrea-Verbano Zone after Zanetti et al., (1999) with the sampling location indicated by a star. (b) Field photograph of the sampled outcrop with the dyke-shaped body of the sillimanite-biotite-garnet gneiss, interpreted as restitic, hosted by mylonitized and fractured stromalite. (c)-(d) Plain-polarised light photomicrographs. Two generations of veins are visible: black veins and pockets (Fe-Ti oxides) and brown-grey material (mixture of fine-grained phyllosilicates and K-feldspar). White star in (d) indicates the position of Fig. 4a. (e)-(f) BSE images with mineral parageneses. Note in (e) that the rutile aggregate contains ilmenite cores (bright grey), and forms intergrowths with two different phases: phyllosilicates from the reaction rim (grey shade, slightly darker than rutile) and quartz (the darkest phase); all indicated by arrows. *Sill* = sillimanite, *Grt* = garnet, *Qtz* = quartz, *Ilm* = ilmenite, *Rut* = rutile, *Rut+Qtz* = rutile-quartz intergrowths, *Phyl* = fine-grained mixture of phyllosilicates, *Zrn* = zircon detrital grain, *Mnz* = monazite.

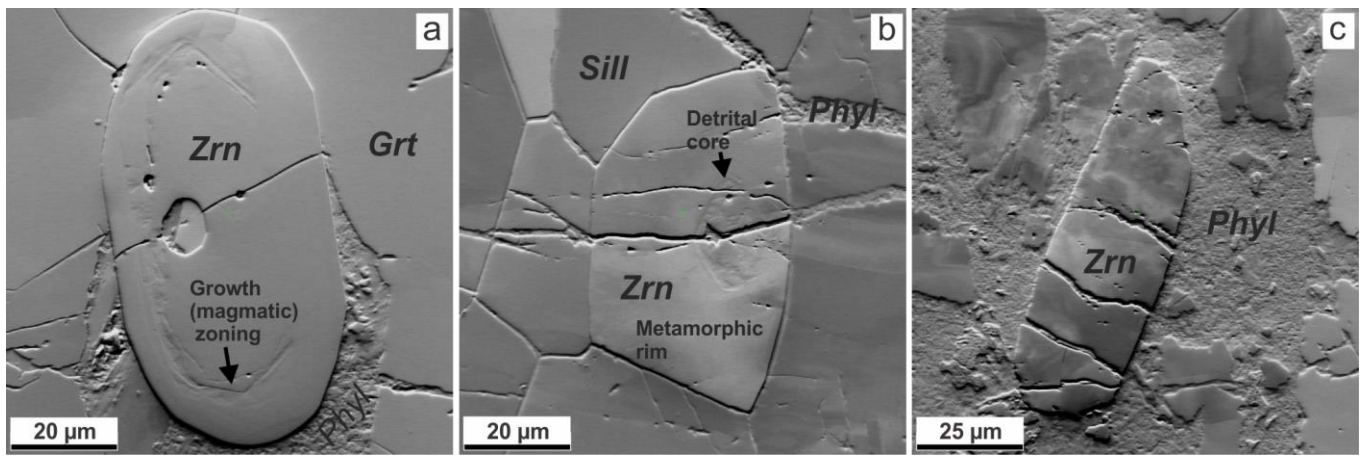


Figure 2: Orientation contrast images of detrital zircon in the sampled gneiss: (a) zircon grain hosted by garnet, note the concentric growth zoning. (b) Zircon grain hosted by sillimanite, note the small detrital core (right hand side) and wide metamorphic rim. (c) Zircon grain hosted by a fine-grained matrix that fills the veins, note intensive change in orientation contrast, especially conspicuous in the upper part of the grain. Orientation contrast image indicates the crystal-plastic deformation of the zircon grain and surrounding mineral fragments (garnet and sillimanite). Fracture surfaces appear to be dissolved. Mineral abbreviations as in Fig. 1.

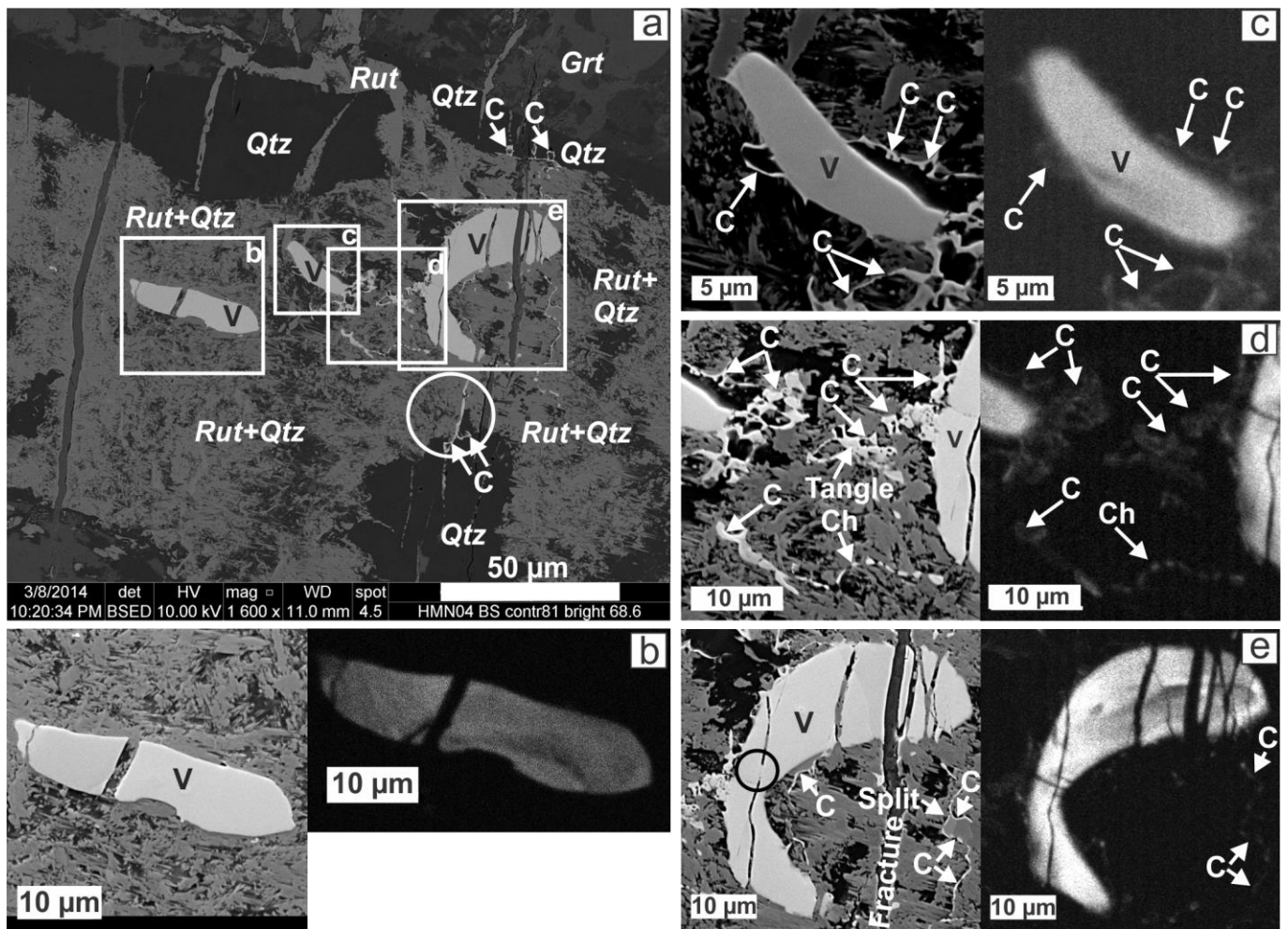


Figure 3: (a) BSE image of the vermicular-shaped zircon aggregates (“V”) and zircon coronae (“C”). Arrows indicate zircon coronae that trace quartz-rutile boundary or fill the cavities in quartz; circle highlights a corona that fills the fracture. Mineral abbreviations as in Fig. 1. (c) - (e) Enlarged BSE (left) and CL (right) images of the areas indicated in (a). “V” highlights the vermicular-shaped zircon grains, “C” points to zircon coronae (the difference between “V” and “C” is in thickness). “Ch” in (d) points to the chain of submicron-sized zircon grains, and “Tangle” points to the “tangled” occurrence of coronae. Arrows in (e) indicate the directions of the reaction fronts, and “Split” points to the branching of zircon coronae. Circle in (e) highlights partially healed fracture in vermicular zircon.

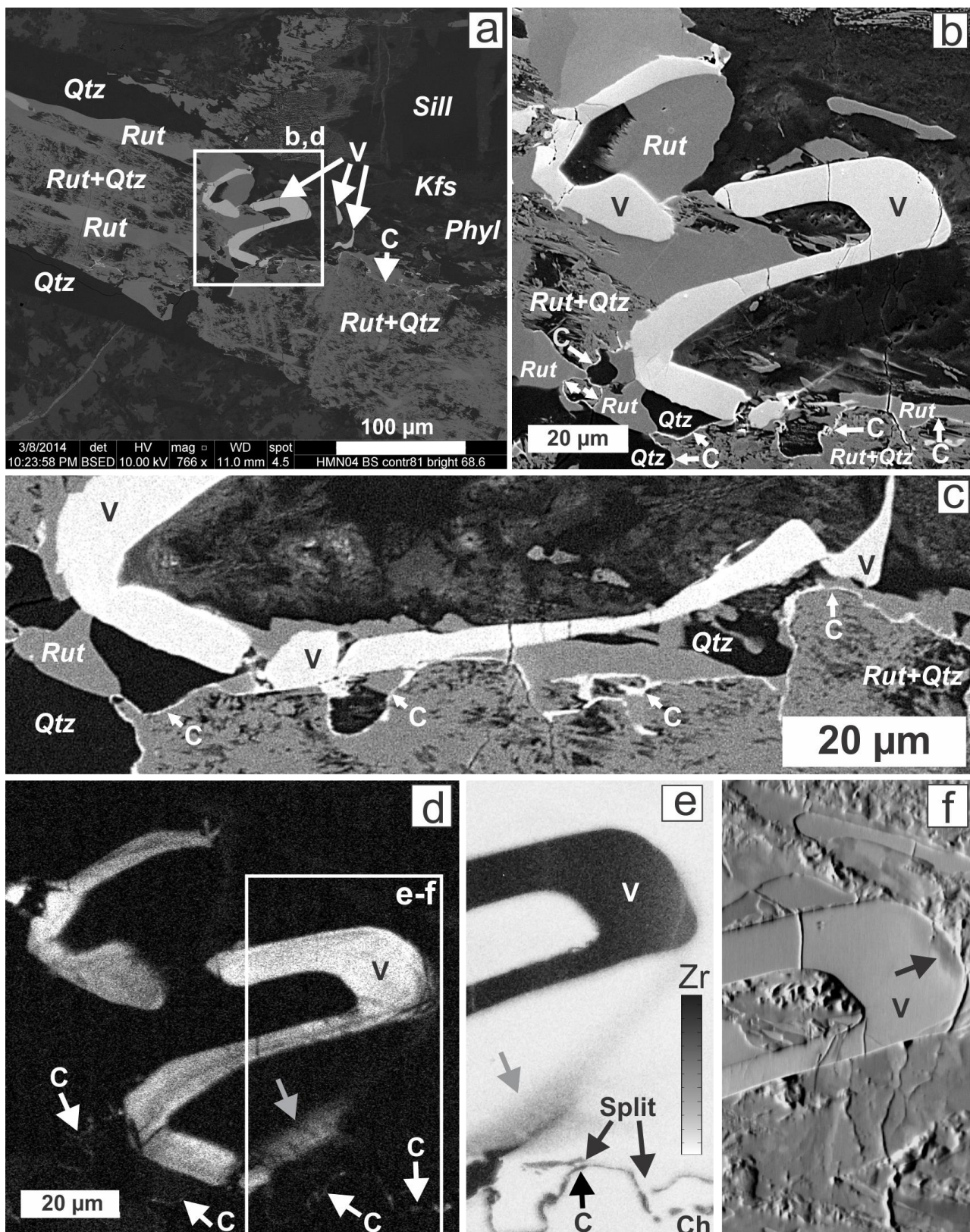


Figure 4: (a) BSE image of the zircon aggregate, which forms intergrowth with rutile and quartz. White rectangle highlights the area enlarged in b and d. (b) Enlarged BSE image of the area indicated in (a). Arrows point out the direction of reaction fronts. (c) Enlarger area of the lower part of (b). The middle part of vermicular texture ("V") is present (it was subsequently polished away and thus absent in later images a-b). Arrows point out the direction of reaction front. (d) Enlarged CL image of the area indicated in (a). White arrows as in (b), grey arrow points to the wedged zircon texture that continues below the surface. (e) Qualitative EDX intensity map for Zr of the area indicated in (d). Black arrows point out the direction of reaction front, grey arrow as in (d). (f) Orientation contrast image of the area indicated in (d). Arrow points to plastically-deformed tip of vermicular zircon grain. "V" in (a)-(f) highlight vermicular zircon grains, "C" – zircon coronea. Mineral abbreviations as in Fig. 1, Kfs = K-feldspar.

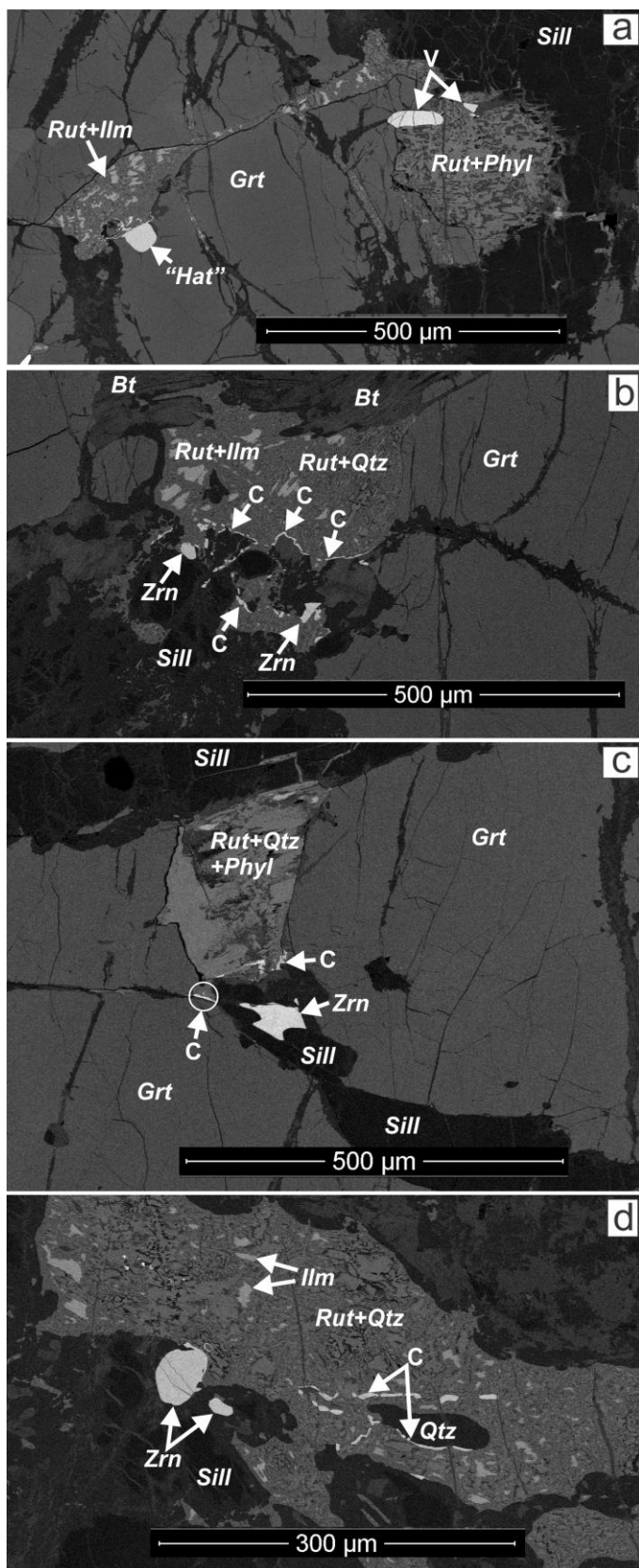


Figure 5: BSE images of mineral reactions that contain detrital zircon grains and associated zircon coronae. Mineral abbreviations as in Fig. 1, *Bt* = biotite, "Hat" = hat-shaped zircon aggregate. "V" highlights the vermicular zircon grains, "C" points to the zircon coronae, *Zrn* = pre-existing detrital and metamorphic zircon grains. Arrows in (b) show the direction of mineral reaction front.

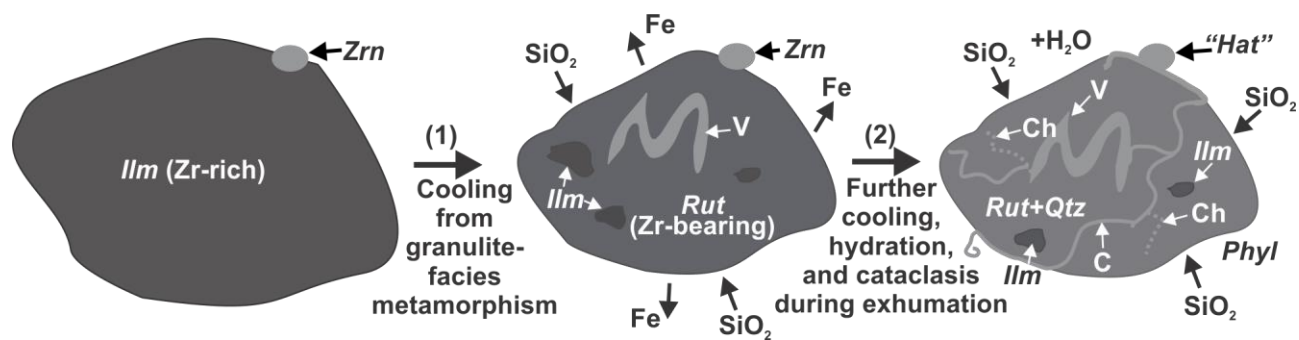


Figure 6: Sketch of the formation stages of zircon coronae. Post-peak metamorphic Zr-rich ilmenite fills the pocket between peak metamorphic minerals and has lobate boundaries. During the initial retrograde cooling (1) it decomposes to Zr- and SiO_2 -bearing rutile and vermicular-shaped zircon aggregates. The system loses Fe and requires SiO_2 from the surrounding phases, the volume of Fe-Ti oxide decreases. Further cooling, hydration and cataclasis during exhumation (2) results in recrystallization of Zr-bearing rutile to rutile-quartz intergrowths with precipitation of thin zircon coronae. At this point the reaction requires SiO_2 and H_2O from the surroundings. Abbreviations as in Figs. 1, 3 and 5.