

Revision notes

Dear Editor and Reviewers,

we like to thank you for your valuable comments that helped to significantly improve this work. All points were discussed by the authors and replied to in detail. We refer to the numbered reviewer comments listed subsequently. We hope to provide an elaborate answer to all comments, concerns or questions. The corresponding changes in the text are linked in the reply.

Furthermore, we did some non-linked minor grammatical changes and reformulations in the manuscript - highlighted as usual (red: deleted; blue: replaced). In some cases we also found inconsistencies in the manuscript that can lead to misunderstandings. Those were highlighted as before mentioned as well. In some cases, we added comments directly at the relevant text passage in order to explain the changes. We hope to improve the quality of the manuscript and improve its overall understanding through these grammatical, explanatory, and unifying changes, as well as the simplifying reformulations.

Yours sincerely, the authors

15 Reviewer #1- specific comments:

The specific comments and suggestions in the following were given by reviewer **Carla Braitenberg**. Our replies in the following passage are identical to those of the already submitted answer sheet on Solid Earth Discussion Forum.

1-1 P:2, L:21 - not clear what is intended with "projects in problematic karst regions". Please give an explanatory sentence.

Reply: We agree that the term "problematic" is not well chosen and that it can cause some confusion. Here, just karst regions are meant that are affected by subsidence and where anthropogenic engineering projects were undertaken - [Gutiérrez and Lizaga \(2016\)](#) report about "Sinkholes, collapse structures and large landslides in an active salt dome submerged by a reservoir" in Iran; and [Milanovic \(2002\)](#) deals with "human activities and engineering constructions in karst". The sentence was reformulated: [See changes for comment 1-1 on page 2.](#)

1-2 P:3, L:2-5 - Here different geophysical methods that are useful to define morphology of cavities and sinkhole fills are mentioned, but the gravity method is lacking. Please include it, for instance with [Braitenberg et al. \(2016\)](#), and [Pivetta and Braitenberg \(2015\)](#).

Reply: The previous role of structure-imaging gravity in sinkhole investigations is mentioned in L13-L18. Furthermore, the previous application of time-lapse gravity investigating underground mass redistribution is mentioned starting on L19. We are aware of the fact that some (micro-)gravity surveys were conducted in the past to derive information about cave morphologies or to map sinkholes, e.g. in the Dead Sea region ([Rybakov et al., 2001](#)). We will add this information. We have mentioned the gravity method as well: [See changes for comment 1-2 on page 3.](#)

1-3 P:3, L:19-23 - For hydrologic monitoring in Karst I suggest to include the recent paper of [Champollion et al. \(2018\)](#) and the work of [Van Camp et al. \(2006\)](#).

Reply: Included, especially as they are related to water storage changes in karst regions and make use of gravity surveys: [See changes for comment 1-3 on page 3.](#)

1-4 P:5, L:6 - "Karst Trail". Not clear what is meant: is it a tourist trail or do you mean something else? Please reformulate or add a few words.

Reply: Yes, this is a tourist trail. We have reformulated the sentence: [See changes for comment 1-4 on page 5.](#)

1-5 P:5, L:10 - "structures regional scattered": check Grammar.

Reply: We agree that this sentence is not well written. It and its citation was replaced: [See changes for comment 1-5 on page 5.](#)

1-6 P15: Least Square Adjustment of Network: it would be of interest to see the mathematical equations of the process. Maybe you could add it to the Appendix.

Reply: The software, which was used for the last squares adjustment, is cited in the text (GNLSA; [Wenzel, 1985, 1993](#)); furthermore, we also refer to the methodological approach ([Wolf, 1975](#)). The equation is published several times. Hence, we suggest refraining from submitting a more detailed appendix.

1-7 P:17, L:1 - GLDAS produces artifacts before February 2016. Do you know whether the data assimilated in the model have changed in 2016? How does the GLDAS series compare to the groundwater measurements in the well you have? Please also show the groundwater well that exists. Show also the rainfall and an integrated rainfall function. Discuss whether it is useful for the observed gravity changes.

Reply: GLDAS etc.: Here, we refer to the links in the following passage "General discussion" and the detailed answer already given in the on Solid Earth Discussion Forum submitted answer sheet. Furthermore, GLDAS data contain the soil water, which is not exactly comparable to ground water as groundwater mostly is delayed. The authors would like to point out that the record of precipitation/rain is not very helpful, as it is of quite high frequency compared to the quarterly measuring campaigns and their results. A groundwater gauge in the city of BF would be of extreme higher value although we have to be aware of the high variability/heterogeneity in the small city. We included some explanations and reformulations in the manuscript. Please cf. the following passage "general discussion".

1-8 P:18, L:5 - "add up to 0.1...": units missing?

Reply: Yes, here the units were missing and added: [See changes for comment 1-8 on page 19.](#)

1-9 P:18, L:7 - *"It is not mandatory that gravity values on installed benchmarks are stable over time": please add a few words, to make this point clearer.*

Reply: We agree that this statement might need some more explanation. We added some further words: [See changes for comment 1-9 on page 19.](#)

Reviewer #1- general discussion:

The following two points of discussion need attention and must be incorporated into the manuscript. We orientate on the previous detailed discussion on SED:

Hydrology: Here, we want to refer to the detailed answer already given in the on Solid Earth Discussion Forum submitted answer sheet. Furthermore, we tried to take the suggestions that were given related to this topic into account in several text passages in the following way:

- (1) We added a better formulation for a clear separation in hydrology between soil water content and groundwater level: [Text passage 1.](#)
- (2) We reformulated some sentences and passages in Section 3.4. Here, we tried to explain why the special consideration of groundwater in Bad Frankenhausen is not suitable and therefore object of future work: [Text passage 2.](#)
- (3) The seeming "artifacts" in Fig.8 and Fig.9, that were noticed by the authors and the reviewer are discussed to result from non-computable groundwater effects: [Text passage 3.](#)
- (4) At last, we strongly recommend the recording of groundwater level on several text passages and added another explanatory sentence: [Text passage 4.](#)

Quantitative Interpretation: Here, we also want to refer to the detailed answer already given in the on Solid Earth Discussion Forum submitted answer sheet. Besides, we tried to add a few sentences concerning this point of discussion in the manuscript: [Text passage 5.](#)

Reviewer #2- specific comments:

The following suggestion was given by reviewer **Lev Eppelbaum**. Our reply is orientated on the already submitted answer on Solid Earth Discussion Forum.

2-1 *As a wish, I must note that two level (or multilevel) precise gravity survey (Eppelbaum et al., 2010) may be especially effective for the time-lapse gravity studies. Such a survey will be more sensitive to appearing of even small irregularities in the studied near-surface section.*

Reply: We sincerely thank for the suggestion of this point of discussion and introduced it in our conclusion: [See changes for comment 2-1 on page 24.](#)

Time-lapse gravity and levelling surveys reveal mass loss and ongoing subsidence in the urban subrosion prone area of Bad Frankenhausen/Germany

Martin Kobe¹, Gerald Gabriel¹, Adelheid Weise¹, and Detlef Vogel¹

¹Leibniz Institute for Applied Geophysics, Stilleweg 2, D-30655 Hanover, Germany

Correspondence: Martin Kobe (martin.kobe@leibniz-liag.de)



Abstract. We present results of a sophisticated, high-precision time-lapse gravity ~~survey~~ monitoring that was conducted over four years in Bad Frankenhausen (Germany). To our knowledge, this is the first successful attempt to monitor subrosion-induced mass changes in urban areas with repeated gravimetry. The method provides an approach to estimate the mass of dissolved rocks in the subsurface.

5 Subrosion, i.e. leaching and transfer of soluble rocks, occurs worldwide. ~~Especially~~ Mainly in urban areas, any resulting ground subsidence can cause severe damage, especially if catastrophic events, i.e. collapse sinkholes, occur. Monitoring strategies typically make use of established geodetic methods, such as levelling, and therefore, focus on the associated deformation processes.

In this study, we combine levelling and highly precise time-lapse gravity ~~surveys~~ observations. Our investigation area is the
10 urban area of Bad Frankenhausen in Central Germany, which is prone to subrosion, as many subsidence and sinkhole features on the surface reveal. The city and the surrounding areas are underlain by soluble Permian deposits, which are continuously dissolved by meteoric water and groundwater in a strongly fractured environment. Between 2014 and 2018, a total of 17 high-precision time-lapse ~~gravity~~ gravimetry and 18 levelling campaigns were carried out in ~~quarter-yearly~~ quarterly intervals within a local monitoring network. This network covers historical sinkhole areas, but also areas that are considered to be stable.
15 Our results reveal ongoing subsidence of locally up to 30.4 mm a^{-1} , with distinct spatio-temporal variations. Furthermore, we observe significant time-variable gravity ~~changes~~ decrease in the order of $8 \mu\text{Gal}$ over four years at several measurement points.

In the processing workflow, after the application of all required corrections and least squares adjustment to our gravity observations, a significant effect of varying soil water content on the adjusted gravity differences was figured out. Therefore, we place special focus on the correlation of these observations and the correction of the adjusted gravity differences for soil
20 water variations using the global soil water model GLDAS Noah to separate these effects from subrosion-induced gravity changes.


Our investigations demonstrate the feasibility of high-precision time-lapse gravity monitoring in urban areas for sinkhole investigations. Although the observed rates of gravity ~~changes-decrease~~ of $1\text{--}2\text{ }\mu\text{Gal a}^{-1}$ are small, we suggest that it is significantly associated with subterranean mass loss due to subrosion processes. We discuss limitations and implications of our approach, as well as give a first quantitative estimation of mass transfer at different depths and for different densities of dissolved rocks.


1 Introduction


Sinkholes or dolines are ground subsidence phenomena that occur worldwide, due to both natural and anthropogenic causes (e.g., Caramanna et al., 2008; Parise and Lollino, 2011; Gutiérrez et al., 2014; Sahu and Lokhande, 2015). They are enclosed depressions with internal drainage that are characteristic features of terrains underlain by soluble rocks (Gutiérrez et al., 2008; Kaufmann, 2014), and may span less than a meter to several hundreds of meters in diameter and tens to hundreds of meters in depth (Williams, 2004; Messerklinger, 2014). Ford and Williams (2007) estimated that karst rocks such as limestone, dolomite, anhydrite, gypsum, and salt underlie about 20 % of the Earth's ice-free continental surface. Thus, the capability for solution and mass transfer by meteoric or groundwater exists. Two main categories of sinkholes have been distinguished: solution and subsidence sinkholes (e.g., Waltham and Fookes, 2003; Waltham et al., 2005; Beck, 2012; Gutiérrez, 2016). The first group results from differential dissolutional weakening of exposed or merely soil-covered karst rocks. The subsequent slow subsidence forms sagging or suffosion sinkholes and is considered to be less hazardous from an engineering point of view (Gutiérrez et al., 2014). The second group represents a wide spectrum of dolines generated by subsurface chemical dissolution or mechanical erosion, termed subrosion in the following. It is further classified by the affected material (cover, cap rock, or bedrock), the process of subsidence mechanism (collapse, suffosion, or sagging), and the dissolution rate (Cooper, 1986; Beck, 1988). Subrosion and the development of sinkholes may be influenced by numerous anthropogenic factors such as mining (Brady and Brown, 2006; Mesescu, 2011), tunneling (Song et al., 2012), water abstraction (Bell, 1988; Aurit et al., 2013) or water impoundment (Hunt et al., 2013), ~~and also the development of~~ and other large-scale hydrological projects in ~~problematic karst regions~~ karst regions, which enhance the natural process of dissolution (Milanovic, 2002; Gutiérrez and Lizaga, 2016). In karst environments, collapse sinkholes are often related to gravitational subsurface cavity collapse (Parise and Lollino, 2011; Waltham, 2016), where stress conditions exceed the material stability of the surrounding rocks, which may be related to sudden water-level changes (e.g., Lollino et al., 2013) or seismic activity (e.g., Kawashima et al., 2010).

If very fast suffosion takes place or sinkholes suddenly collapse in urban areas, they are a severe hazard for residents, economical and residential buildings, and infrastructure in general (e.g., Brinkmann et al., 2008; Lei et al., 2013; Gutiérrez, 2016; Wadas et al., 2017). Hence, ongoing urbanisation and the growth of world's population increase the requirement for detailed investigation of subrosion processes and sinkhole development for risk assessment.

Several geophysical and geodetic methods are applicable for the investigation of potentially unstable ground, subrosion processes, and the accompanied development of sinkholes. Surface deformation and sinkhole development can be monitored by airborne LiDAR (e.g., Filin et al., 2011; Miao et al., 2013), photogrammetry (e.g., Lee et al., 2016; Al-Halbouni et al.,

2017), and InSAR (e.g., Nof et al., 2013; Shviro et al., 2017), or ground-based geodetic methods such as high-precision levelling (e.g., Sevil et al., 2017; Desir et al., 2018), ground-based LiDAR (Benito-Calvo et al., 2018), GNSS applications (e.g., Kent and Dunaway, 2013; Kersten et al., 2017; Weise et al., 2018), and ground-based InSAR (Intrieri et al., 2015), which are more suitable for small-scale studies and local investigations. Information on, e.g., morphology of cavities, sink-
5 hole fills, or fissures can be investigated by ground penetrating radar, electrical resistivity tomography, (micro-)gravity surveys  (e.g., Rybakov et al., 2001; Pivetta and Braitenberg, 2015; Braitenberg et al., 2016), or nuclear magnetic resonance (e.g., Gómez-Ortiz and Martín-Crespo, 2012; Miensopust et al., 2015), as well as magnetometry (e.g., Bosch and Müller, 2001; Rybakov et al., 2005). Due to electromagnetic noise and ferrous materials, electromagnetic methods ~~are~~ and magnetometry are often not feasible in urban areas. Information about underground structures and physical rock parameters can be obtained by shear-
10 wave seismic reflection profiles that are especially suitable to resolve shallow geological structures with high resolution (e.g., Krawczyk et al., 2012; Wadas et al., 2016, 2017; Polom et al., 2018), ~~as well as~~ Furthermore, seismic reflection and seismic refraction ~~to~~ gives information about deeper layers (e.g., Higuera-Díaz et al., 2007; Sargent and Goulty, 2009). Another valuable tool for the understanding of the development and propagation of collapse sinkholes is numerical modelling (e.g., Augarde et al., 2003; Kaufmann et al., 2018; Al-Halbouni et al., 2018). The use of tiltmeters (Sandia National Laboratories,
15 2016), borehole strainmeters (Zini et al., 2015), or borehole measurements in general (Yechieli et al., 2003; Song et al., 2012) are sparse and not applicable in densely built-up urban areas due to high costs and strict approval procedures (Schmidt, 2005). Some multidisciplinary field studies include gravimetry (e.g., Patterson et al., 1995; Tuckwell et al., 2008; Dahm et al., 2010; Ezersky et al., 2013; Kaufmann, 2014; Pazzi et al., 2018), but focus structural interpretations of the Bouguer anomaly above and around assumed subsrosion features. Hence, and with sparse exceptions (Lambrecht et al., 2005; Benito-Calvo et al., 2018),
20 the majority of the mentioned ground-based methods are applied to localize sinkholes, image the actual state of sinkhole development, and concentrate on their spatial extent or physical parameters at a certain point of time.

In contrast, the time-lapse gravity method can deliver enhanced information about the variable local gravity field over time. It is non-invasive and directly sensitive to temporal mass movements on different spatial and temporal scales. Time-lapse gravity ~~was~~ observations were successfully applied to monitor, e.g., subsurface water storage changes (Naujoks et al., 2008; Jacob et al., 2010; Pfeffer
25 ~~in general~~ (Naujoks et al., 2008; Pfeffer et al., 2013) and in karst regions (Van Camp et al., 2006; Jacob et al., 2010; Champollion et al., 2017), CO₂ storage changes (Nooner et al., 2007; Wilkinson et al., 2017), or withdrawal or intrusions beneath volcanic edifices  (Jentzsch et al., 2004; Hautmann et al., 2014; Carbone et al., 2017).

We present a study that reveals potential subsrosion-related mass transfer in the underground using spring gravity meters for a time-lapse survey over four years. A special focus is placed on the hydrological correction ~~of~~ , which strongly means
30 soil water content ~~, which is, besides the groundwater level variation, one of the most~~ and changes in groundwater level. Both  are challenging impacts on gravity variations (e.g., Bonatz, 1967; Mäkinen and Tattari, 1988), especially in ~~subrosion-prone urban areas without~~ urban areas and where no special hydrological monitoring sites exist. We introduce the survey area of Bad Frankenhausen, located in Thuringia in Germany (Sect. 2), and the monitoring concept, including data processing and a hydrological soil water correction approach (Sect. 3). The results show constant gravity decrease, as well as continuous
35 subsidence at specific points inside of our measurement network (Sect. 4), which is assumed to be caused by underground

mass redistribution. This is also discussed in Sect. 5, such as the feasibility of the time-lapse gravity method for sinkhole monitoring under urban conditions.

2 Geology of the survey area

Sinkholes in Germany occur over the whole country due to the dissolution of various soluble rocks in the underground (Fig. 1a). These are mainly near-surface salt diapirs in northern Germany (Krawczyk et al., 2012; Kaufmann et al., 2018), and carbonates and sulphates in the central and southern parts of the country (Kaufmann, 2014; Wadas et al., 2017).

5 Our study area is located in the centre of Bad Frankenhausen (BF), a small city in northern Thuringia in Central Germany, which is located in the transition zone of soluble rock packages (~~Fig. 1a & Wadas et al. (2016)~~). (Fig. 1a & Wadas et al., 2016)
It is bounded by the Kyffhäuser hill range to the ~~North~~-north (Fig. 1b) and the Thuringian Basin to the ~~South~~-south (an
extensive geological overview of Thuringia is given by Seidel (2003)). Geological units in the working area were deposited in
the Permian and the Triassic, and are divided by the W-E-trending and northwards-dipping Kyffhäuser Southern Margin Fault
10 (KSM Fault) (Wadas et al., 2016).

The sediments to the north of the KSM Fault are mainly Zechstein evaporites developed from seven evaporation-transgression
cycles of the epicontinental Zechstein sea in the Upper Permian (258-250 Ma). These are alternating layers of conglomerates,
carbonates, sulfates, and rock salt (Richter and Bernburg, 1953). The main occurrent marine formations in the research area
are termed Werra, Straßfurt, and Leine (Fig. 1b). Extensive units of anhydrites, carbonates, copper shales, and conglomerates,
15 mainly from Werra and Straßfurt Formations, can be found in the Kyffhäuser hill range. Scattered Leine Fm. deposits consist-
ing of salt clays, anhydrites, and carbonates cover the region to the ~~north-west~~-northwest of BF (Schriel and Bülow, 1926a,
b).

The sediments to the south of the KSM Fault are mainly sandstones, claystones, and shales that were deposited during the
Triassic terrestrial sedimentation phase after the marine sedimentation phase of the Permian. Triassic Buntsandstein, Muschel-
20 kalk, and Keuper overlay the Permian evaporites (for thickness values of the rock units see Schriel and Bülow (1926a)).
Quaternary deposits are floodplain sediments, claystones and siltstones, as well as glacial gravels and aeolian silt deposits.

The whole region is prone to subsrosion, as proven by many features on the surface (Fig. 2). This is predominant along the
KSM Fault (Fig. 2a) and part of an about 250 km long ~~Karst-Trail~~-tourist trail - the 'Karst Trail' - along the Southern Harz
hill range(?). Several studies show that the Upper Permian in this region is strongly fractured, and therefore, the mechanical
25 integrity of the subsurface is disturbed. Kaufmann (2014) used a combination of different geophysical methods and joint
inversion to show that the fractured zones ~~could~~-can serve as pathways for meteoric and groundwater, and hence, accelerate
the underground dissolution. Proven by salt springs and about 20.000 subsrosion structures~~regional-scattered-around-the-surface~~
(?), which shape the landscape south of the Harz Mountains (Knolle et al., 2017), the Upper Permian provides the solvable
material in the near surface (Kugler, 1958), especially along the KSM Fault, where the southward-draining groundwater from
30 the Kyffhäuser hill range ascends (Reuter, 1962). The different types and ages of the subsrosion features document the ongoing
subsrosion processes over time. Underground cave growth (Fig. 2b; a description of the Barbarossa Cave is given by Kupetz and
Mucke (1989)) and weakening of the rock units lead and led to the development of collapse (Fig. 2c, d) and sagging sinkholes,
which strongly affect urban constructions in and around BF. The most famous subsrosion feature in the area is the leaning church
tower of BF that currently has an inclination of 4.93° (Fig. 2e) and has been stabilized by a steel pylon construction. Since the

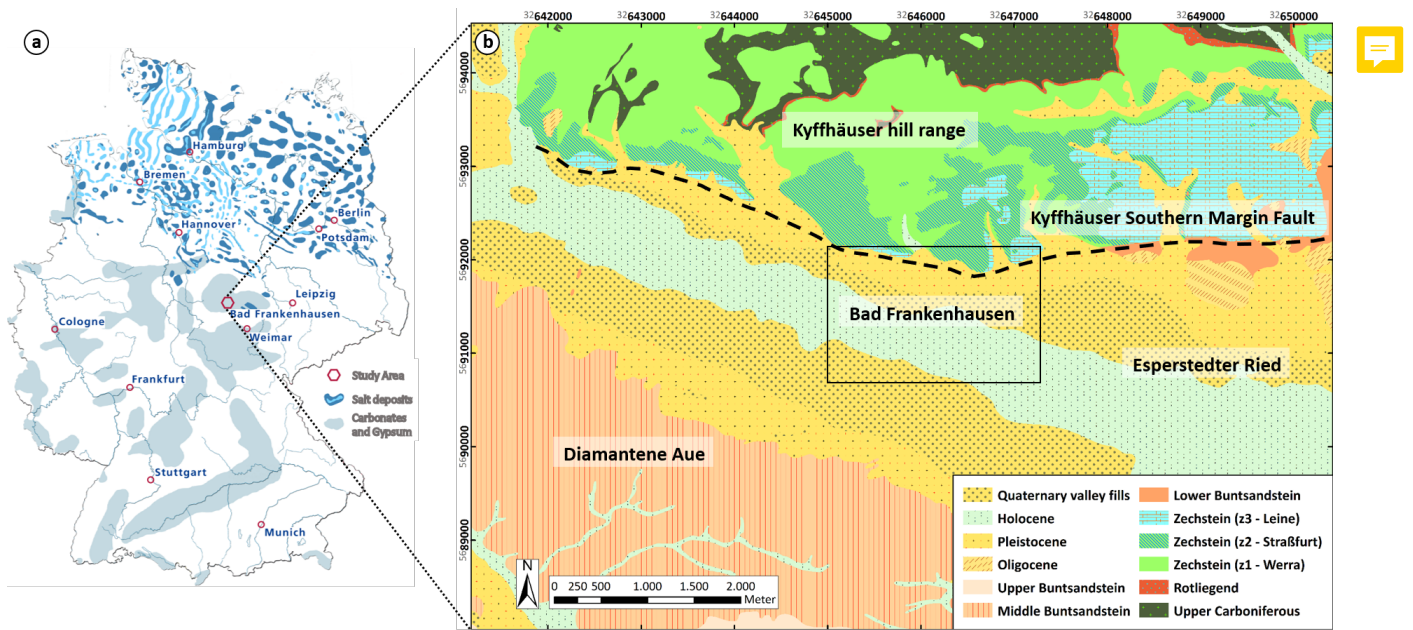


Figure 1. Geological overview of the study area - (a) Distribution of soluble deposits in Germany and location of the study area Bad Frankenhausen in the transition zone between salt and carbonate deposits, after Krawczyk et al. (2015). (b) Geological map showing Permian, Triassic, and Cenozoic deposits of the study area and its surroundings (simplified after Schriel and Bülow (1926a, b); CS: ETRS 1989 UTM Zone 32N).

last collapse of the Quellgrund sinkhole in 1908, the tower's inclination was increasing rapidly due to disturbances within the drainage system beneath the building (S. Schmidt, Thuringian State Institute for Environment and Geology (TLUG), personal communication, 2016). Several cavities and disrupted zones were investigated by three research core drillings (depth: 100 - 458 m) between 2013 and 2015 around the leaning church tower and mainly in the upper 100 m of the cap rock, which mainly consists of Zechstein anhydrites and gypsum (S. Schmidt, TLUG, personal communication, 2016). Other investigations show similar results, e.g., the company SOCON Sonar Control found and surveyed a large cavity (volume: 95.5 m³, depth: 14.5-20.5 m, radius: 8 m) directly beneath the tower by using an ultrasonic sound method through an older drill hole beside the tower walls. In addition, the bigger part of infrastructure and buildings ~~show~~ shows cracks and damage, which led, e.g., to the necessity to rebuild the leaking swimming pool in the city centre, several building renovations and reconstruction works.

Sinkhole development and ongoing subsidence in urban regions such as BF represent severe hazard. Therefore, we aim to detect mass redistribution caused by subrosion by applying time-lapse gravity monitoring to improve the understanding of subrosion processes.

3 Conception for measurement and data analysis

Our general approach is the high-precision monitoring of subrosion-induced time-variable gravity and height changes ~~over~~ time using regular repeated measurement campaigns. Including March 2014, when a two-week long reference campaign was

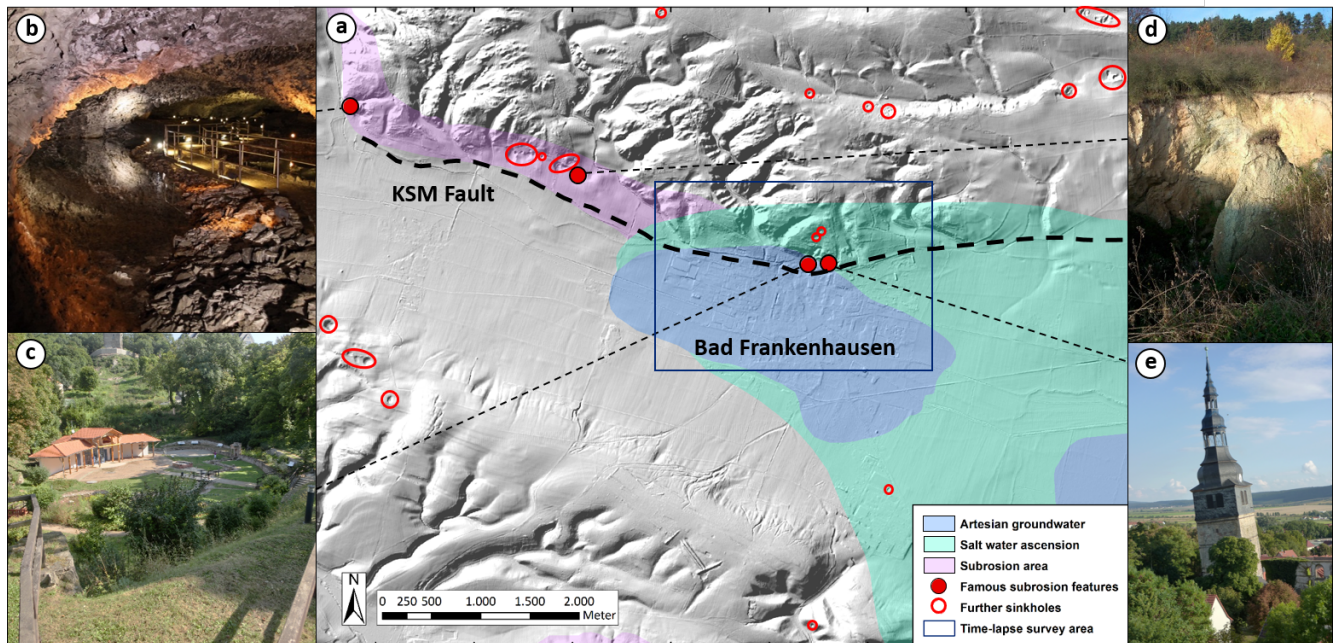


Figure 2. Subrosion features in Bad Frankenhausen (BF) and its surroundings - (a) Digital elevation model ~~showing~~ and the colour-coded hydrogeological assessment of BF and its surroundings (provided by Thuringian State Institute of Environment and Geology, 2016; S. Schmidt, personal communication, 2016; same map extent as in [Fig. 1](#)). Salt water ascension and artesian groundwater conditions affect the survey area (dark blue rectangle). Along the Kyffhäuser Southern Margin Fault (KSM Fault; bold dashed line), a potential fluid path and thus, a subrosion area, several sinkholes (red circles), as well as famous subrosion features occur (filled red circles, see b-e, sketch after [Wadas et al. \(2016\)](#)). (b) Barbarossa Cave (detected in 1865) as part of ~~a karst~~ an educational trail showing karst features along the subrosion area(?). (c) The oldest sinkhole Quellgrund (first mentioned in 998 AD; collapsed for several times and for the last time in 1908; depth now is ca. 10 m) in the centre of the survey area comprises two natural brines with salinities of 4 % and 9.8 %. (d) One of the most recent sinkholes (collapsed in 2009), in a field beside the largest sinkhole of the region, the Äbtissingrube. (e) The leaning church tower of BF (inclination ~~-~~ 4.93°) is ~~the most~~ a very famous subrosion feature and a magnet for tourists.

performed, a total of 17 time-lapse gravity-gravimetry (one week of measurement time) and 18 levelling campaigns were carried out quarterly. The frequency of the campaigns was reduced to half-yearly intervals since the beginning of 2018. ~~Observed~~ The observed temporal components provide the possibility to derive evidence for ongoing subrosion and afford a quantification of the mass relocation in the underground. Therefore, the time-lapse measurements have to be close-mesh and of high quality.

- 5 Potential error sources have to be avoided as much as possible. Realistic error estimations are required when considering the results with respect to significance. All this must be taken into account during planning, measurement, and data analysis. The key requirements in this context are appropriate instrumentation, the local stability of the individual measurement locations, their long-term availability in variable infrastructural surroundings, and a method (measurement and data analysis), which must be robust against inner-city noise (pedestrians, cars, construction work) and systematic errors. In the following, we describe
- 10 our implemented conception for the monitoring and the data analysis.

3.1 Measurement: Monitoring network

A local combined geodetic-gravimetric measurement network was established in Bad Frankenhausen in March 2014 (Fig. 3), based on previous studies (~~structural-gravimetry~~ [gravimetry for structural investigations](#), levelling), site inspection, experiences from similar studies (Naujoks et al., 2008), and information about future construction works in the measurement area. The northern part of the city centre on the edge of the KSM Fault (cf. Fig. 2a) is subject to subsidence of [up to](#) several mm per year (Fig. 3c) as determined by levelling surveys from 2000 to 2010 carried out by 'Glückauf Vermessung Sondershausen' (Scholte, 2011). Furthermore, the Bouguer anomaly in this area, [which is trend-reduced by a 2nd-order polynomial](#) (Fig. 3b), ~~which is trend-reduced by a 2nd-order polynomial~~, correlates qualitatively with the sinkhole areas I-III (cf. Fig. 3c). The negative gravity anomalies are considered to be the first evidence for subsurface subsidence-induced density contrasts. Hence, our extensive measurement network (115 [levelling](#) points - 15 of them for time-lapse gravity [monitoring](#)) covers the northern city with the focus on known sinkhole areas and zones of gravimetric minima in the medieval centre. The connection to superior reference systems provides stability control of the whole network. Our levelling network is tied to the ~~2nd-order~~ [2nd-order](#) trigonometric benchmark RP1 (RP: reference point, Fig. 3a, Fig. 4c) and to LRP (reference point for levelling) of 3rd order at both ends of a 2.75 km long E-W-orientated profile (Fig. 3a). In combination with the levelling network we defined twelve points as ~~time-lapse-gravity-gravimetric~~ network in a close-mesh arrangement (Fig. 3, blue dots: G01 - G12) and three points as gravity reference points (Fig. 3, red dots: RP1, RP2, RP3). Most of the measurement points were installed on infrastructure such as cobblestoned footpaths and marked by synthetic survey markers, which cover steel piles in 30 cm deep-drilled holes (Fig. 4a). Gravity points on meadows (G02, G11, G12) are self-made concrete pedestals of 80 cm depth to reduce noise and soil freezing effects. They are marked by brass survey markers (Fig. 4b).

3.2 Measurement: Devices and data acquisition

Instrumental array - Up to four different gravity meters of various manufacturers were used per campaign (Figure 5). The gravimetric setup consisted of astasised relative metal spring gravity meters of LaCoste & Romberg G-type with feedback (LCR-G, acc¹: $\leq 10 \mu\text{Gal}$, $1 \mu\text{Gal} = 10 \text{ nm s}^{-2}$) and ZLS Burris (acc: $\leq 5 \mu\text{Gal}$), as well as non-astasised quartz spring Scintrex CG3 (acc: $\leq 8 \mu\text{Gal}$) and CG5 (acc: $\leq 5 \mu\text{Gal}$) gravity meters (~~a detailed description of the~~ [systems can be found in instruments](#) - LCR: Torge (1989); Scintrex: Scintrex (1995, 2006); ZLS Burris: Jentzsch et al. (2018)). The mentioned accuracies are dependent on the noise level, the measurement conditions, and especially concerning the Scintrex instruments, the age of the instrument itself. Instrument heights above point label were controlled for each observation. The gravity measurements were accompanied by [levelling using](#) a Leica DNA03 Digital Level (standard deviation per km double run ~~after ISO 17123-2~~: 0.3 mm; cf. Leica Geosystems AG (2006)) with two invar bars to provide height references for gravity height reductions and to conduct subsidence monitoring. Additional equipment consisted of tripods, parasol to avoid effects of sun and rain, and sensors for air pressure.

¹acc - accuracy for a single measurement of a gravity difference under urban conditions in our local network derived from least squares adjustments per campaign

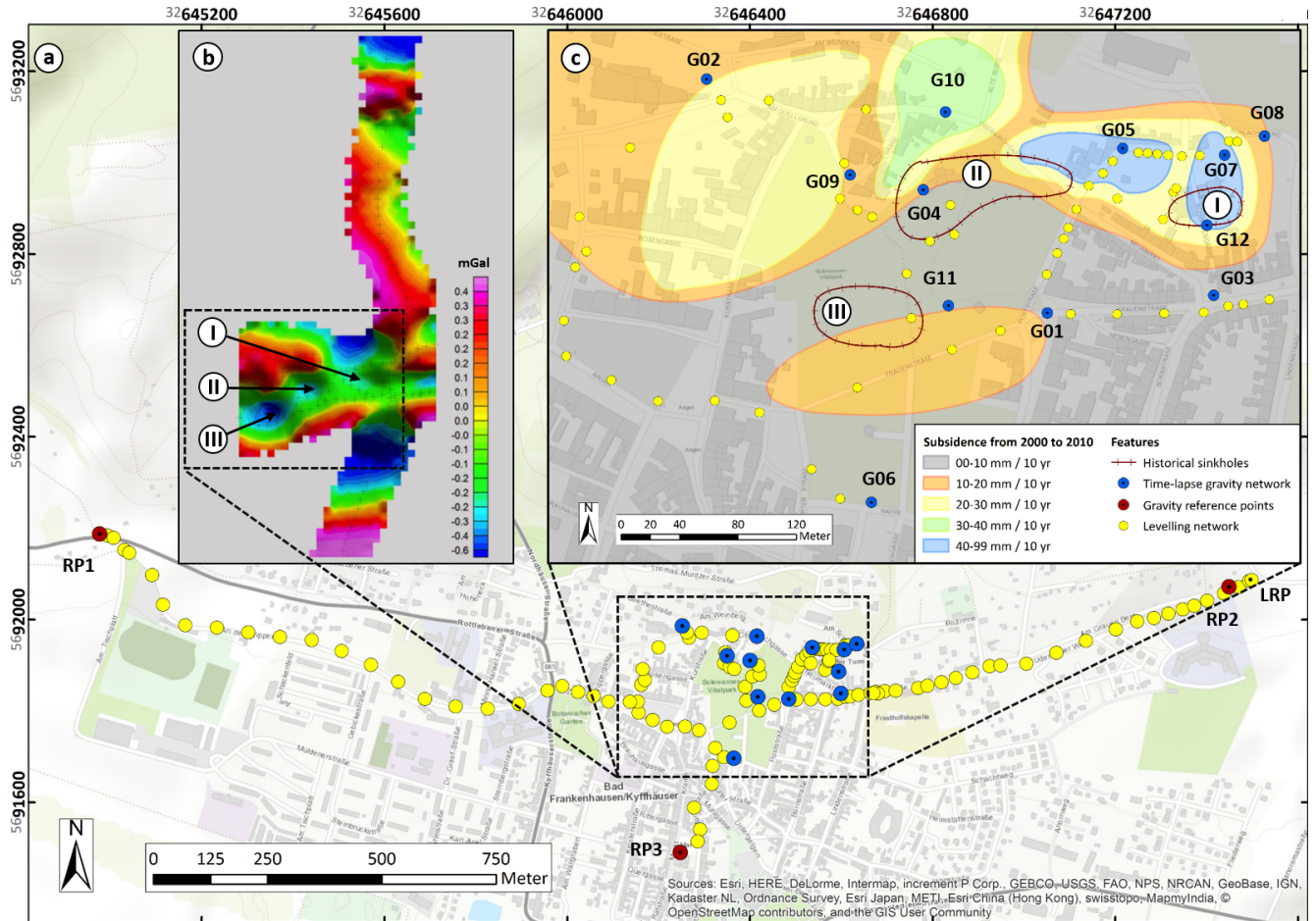


Figure 3. Combined geodetic-gravimetric network for the time-lapse survey-surveys in Bad Frankenhausen (BF) that started in March 2014 within the dark blue rectangle in Fig. 2a - (a) Conception of measurement points in BF with respect to the trend-corrected, residual Bouguer anomaly (Fig. 3b), results of levelling surveys (Fig. 3c), and famous subsrosion features (Fig. 2c, e). Red and blue coloured points show the gravity-gravimetric network, which is complemented by the levelling network marked as yellow points. (b) Trend-corrected Bouguer anomaly within the medieval centre of BF from measurements of structural gravity-gravimetry in September 2013. (c) Results of levelling surveys over ten years show approximated areas of equal subsidence rates, after Scholte (2011). Historical sinkholes in this sketch are: (I) Leaning church tower of BF (cf. Fig. 2e), (II) Quellgrund (cf. Fig. 2c), and (III) a broken and rebuilt swimming pool caused by stress fractures related to subsidence. The locations of historical sinkhole areas correlate-qualitatively-coincide with the-areas of negative gravity anomalies.

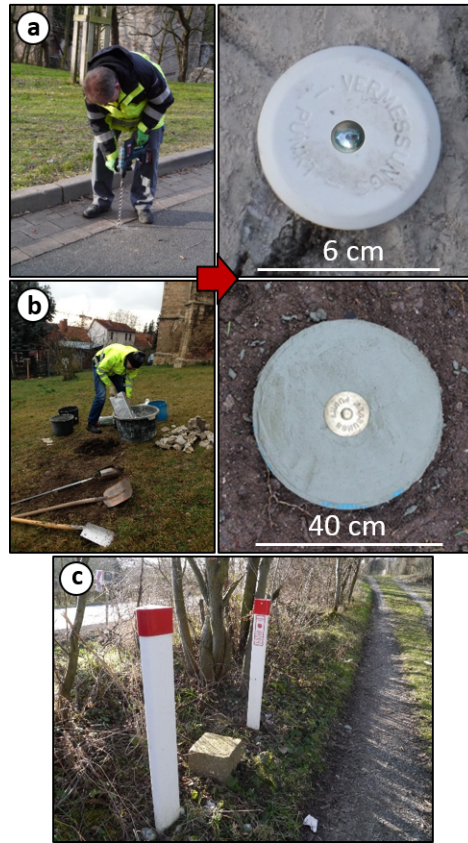



Figure 4. Installation of the time-lapse-measurement-monitoring network - (a) Drilling of levelling/gravity points that were stabilized by 30 cm long steel piles and marked by synthetic survey markers. (b) Pouring of an 80 cm deep concrete base with even surface and brass survey markers. (c) Example of benchmark RP1 provided-operated by the Thuringian State Office for Surveying and Geoinformation (TLVermGEO, pers. communication, 2013).

Calibration setup for gravity meters - In preparation for the single measurement campaigns, instrumental error sources were reduced by determination of instrument-specific calibration factors and their stability  to 10^{-4} . This means that the inaccuracies due to ~~the~~ calibration are, within an effective range of 10 the effective gravity range of 6 mGal, in the dimension of 0.1 order of 0.6 μ Gal. The gravity meters were calibrated using the calibration line in the university tower building in

5 Hanover, Germany (Kanngieser et al., 1983) and the Harz mountain calibration line (Torge, 1989). The estimated mean-standard deviations (STD)-of-adjusted-accuracies of their gravity differences are in the range of 1 μ Gal for Hanover and 2 μ Gal for Harz (Timmen, 2010; Timmen et al., 2018). Frequent calibrations have shown stable calibration factors for all used instruments. Besides, regular laboratory tests with respect to dependencies on instrumental air pressure effects, drift behavior, and tilt were performed for accurate instrument modulation.

- 10 **Time-lapse gravity survey-monitoring** - Evidence of mass loss due to underground leaching requires a measurement concept, which focuses on both accuracy and efficiency. The most convenient procedure is the measurement of gravity differences

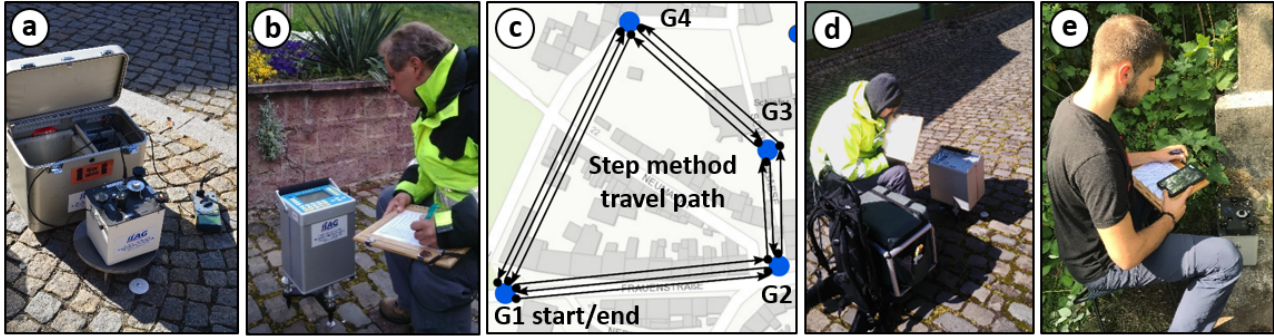


Figure 5. Overview of the gravity meters and the method that was used in this study. The accuracies (acc) were obtained from least squares adjustments per campaign and are valid for the single measurement of a gravity difference - (a) LaCoste & Romberg G-Type (acc: $\leq 10 \mu\text{Gal}$); (b) Scintrex CG5 (acc: $\leq 5 \mu\text{Gal}$); (c) Travel path for the application of the step method - four points in a polygon mean 13 measurements; (d) Scintrex CG3 (acc: $\leq 8 \mu\text{Gal}$) and (e) ZLS-Burris Gravity Meter (acc: $\leq 5 \mu\text{Gal}$).

between the points in a network applying the step method for optimal drift control (Torge, 1989). Therefore, the gravimetric measurement network (Fig. 3) was subdivided into polygons consisting of four to six points each. In a four-point polygon, this resulted in a total amount of 13 measurements, i.e. 4 differences were measured each 3 times (Fig. 5c). The advantage of this method is an optimal drift determination and the possibility of statistical validation of each measured gravity difference. At a measurement point and for statistical and accuracy reasons, different settings were used depending on the type of gravity meter: Scintrex - 10 measurements in cycles of 60 s (45 s registration, 15 s break); LCR-G - 3 measurements at 3 spindle positions (± 0.1 scale units) using feedback; ZLS Burris - 5 measurements at a fixed spindle position using only feedback (range: $\pm 25 \text{ mGal}$).

3.3 Data analysis: Processing steps

- 10 Measured height changes obtained by levelling campaigns are processed using Nigra, a special software for the analysis of levellings (TrukSoft, 2018). Here, the height differences are not adjusted, but discrepancies are distributed along a profile or in loops after the averaging of all double-observed height differences.

- Gravimetric time series contain numerous signals-effects that superimpose the signal of interest. Therefore, and to compare the gravity differences per campaign and observed gravity differences between network points with each other for different campaigns, as well as to identify a potential subsidence signal due to mass redistribution, several processing steps had to be applied (Table 1). Highly sensitive gravity meters are affected by shocks and tilt, e.g., by passing cars or pedestrians, which can produce errors like jumps or spikes in the datasets. Especially, Scintrex gravity meters are sensitive to transportation effects, i.e. to long-lasting run-in periods due to the relaxation of accumulated tension in the sensor (Reudink et al., 2014; Klees et al., 2017). These effects mainly occur after tilting a Scintrex instrument by $\geq 8^\circ$ for several minutes during transportation.
- 20 Additionally, random and systematic errors occur. Hence, pre-processing was applied to correct the data per point for outliers, jumps, spikes, and running-in behavior, and finally, to average them.



Table 1. Data processing steps on time-lapse gravity observations for the identification of a subrosion-induced signal.

processing step	source of data superposition	corrections (●) and further steps (→)	tool for correction
pre-processing and data quality control	<ul style="list-style-type: none"> ● random and systematic errors ● anthropog. noise (cars, pedestrians, ...) ● instrumental effects (tilt, tension, ...) 	<ul style="list-style-type: none"> ● spikes, jumps ● running-in behavior ● oscillating values → finally averaging of values 	<ul style="list-style-type: none"> ● self-written python-based software
least squares adjustment	<ul style="list-style-type: none"> ● tides ● air pressure changes ● instrumental effects ● setup effects 	<ul style="list-style-type: none"> ● earth tides ● ocean loading tides ● atmospheric pressure ● instr. air-pressure effect ● calibration factors ● instr. height reduction → weighting of gravity meters → adjustment of linear drift 	<ul style="list-style-type: none"> ● GNLSA 1.01 (Wenzel, 1985)
post-processing	<ul style="list-style-type: none"> ● point subsidence ● hydrological effects 	<ul style="list-style-type: none"> ● height changes on gravity points ● soil water content 	<ul style="list-style-type: none"> ● self-written python-based software ● global model GLDAS (Rodell et al., 2004)

The pre-corrected mean values-gravity records contain different instrumental and environmental signal content (explained in detail, e.g., by Torge (1989) or Timmen (2010)), which varies continuously with time or occurs irregularly, and superimposes the potential subrosion signal. Thus, the observations of each single gravity meter and all gravity meters combined were analysed by a least squares adjustment (?) using the fortran-based (Wolf, 1975) using the Fortran based program package GNLSA 1.01 (Wenzel, 1985, 1993). It executes the correction of data for earth tides and ocean loading tides, gravitative and instrumental air pressure effects, height-reduction of the gravity meter mass suspension relating to the point label by using the vertical standard gravity gradient on Earth’s surface of 0.3086-0.3086 $\mu\text{m Gal m}^{-1}$, as well as the application of all calibration factors as described in Sect. 3.2. It also includes the adjustment of linear drifts. If drift effects appeared as highly non-linear on some days, we divided these days and introduced ‘additional’ gravity meters instead. Another important requirement was the weighting of gravity meters during the least squares adjustment due-according to their precision level. The results of the execution-of-running GNLSA are adjusted gravity differences plus STD for each-every possible difference in the network and adjusted linear drift parameters -

Subsequently the observations are freed from known and well computable effects and for each campaign. Furthermore, gravity values plus STD for each single measurement point are calculated from the adjusted gravity differences based on given absolute levels of reference points.

Subsequently, a post-processing takes places. Firstly, temporal height variations of gravity points as derived from the leveling campaigns were taken into account using the vertical standard gravity gradient on Earth’s surface. Secondly, the gravity differences show seasonal effects (cf. Sect. 4.2, Fig. 8, Fig. 9), which correlate well with temporal variations in the soil water content. These were considered within data processing-post-processing as described in the following section.

3.4 Data analysis: Hydrological effects

So far, the gravimetric potentially subrosion-induced signal of interest is still superimposed by hydrological effects like changes in the-groundwater table and soil water content (Bonatz, 1967; Mäkinen and Tattari, 1988). These are characterized by spatial

point-to-point and temporal campaign-to-campaign variations. Hydrological effects are also dependent on the topography around a measurement point (Naujoks et al., 2008; Deville et al., 2013). Unfortunately, no ~~groundwater gauge is installed~~ recordings of groundwater level and soil water content are available in or nearby the measurement area, ~~i. e. no correlation could be realized. Comparison with groundwater gauges, a few hundreds of meters away from our network, which consider~~ the upper aquifers around our measurement network, shows no significant correlation between the gravity and groundwater signals, also because of the aquifers depth of about 30, and thus, could not be considered here.



Soil water content can vary in two ways, irregularly and seasonally. To compute its effect on gravity data, several models on different scales and resolution are available (e.g., Meng and Quiring, 2008; Ford and Quiring, 2013). In this study the Global Land Data Assimilation System (GLDAS - model type: Noah) from NASA was chosen (Rodell et al., 2004), because no local soil water models are available for our measurement area in that quality. It includes extensive regional climate data (temperature, air pressure, humidity, long-wave radiation) on a $0.25^\circ \times 0.25^\circ$ grid over Europe and provides monthly soil water content that covers the upper two meters of depth. GLDAS Noah is available online and open-source (Beaudoing and Rodell, 2016). The computed varying soil water content has the dimension of mm water column and was interpolated for the first day of each measurement campaign. The correction of gravity differences is based on the determination of respectively associated regression coefficients in the dimension of $\mu\text{Gal mm}^{-1}$. Here, a regression coefficient symbolises the ~~deviations~~ differences in the time-variable soil water content between two points of a gravity difference and further discrepancies in point conditions such as topography, porosity, or sealing. We multiplied a single coefficient with the soil water ~~data~~ content and reduced the result from the associated time-variable gravity difference. The remaining signal in the gravity differences contains mainly long-periodic subsrosion-related gravity variations, in case subsrosion is taking place, plus short-periodic noise, and location-dependent non-computable groundwater effects. ~~If~~

With regard to groundwater variations, it is known from some drillings that the depth of groundwater in Bad Frankenhausen varies between 2.5 m in the southern and up to 10-20 m in the northern part of our monitoring network. However, no specific evidence of the local groundwater level depth is available. A few gauges of groundwater level exist in a distance of 5-10 km. The groundwater level only partially correlates with the soil water content from GLDAS model in a seasonal range. As a first proxy and under the assumption that these groundwater variations are roughly valid for the measurement area as well, the previously determined regression coefficient for soil water content could partly include the effect of ground water changes. Also it has to be considered that the groundwater signal has a phase shift relative to the soil water content. If local groundwater data were available, a second regression coefficient for groundwater correlation could be calculated.



4 Results

4.1 Levelling

The results over four years of levelling are shown in Fig. 6 as an overview. Achieved accuracies over all campaigns are in the range of ± 1.5 mm for the 2.75 km long E-W-orientated profile and ± 1.0 mm for the loops in the northern city centre (Fig. 6b). The reference points for levelling (RP1, LRP, cf. Fig. 3) were stable over the past four years. In Fig. 6, the measurement network

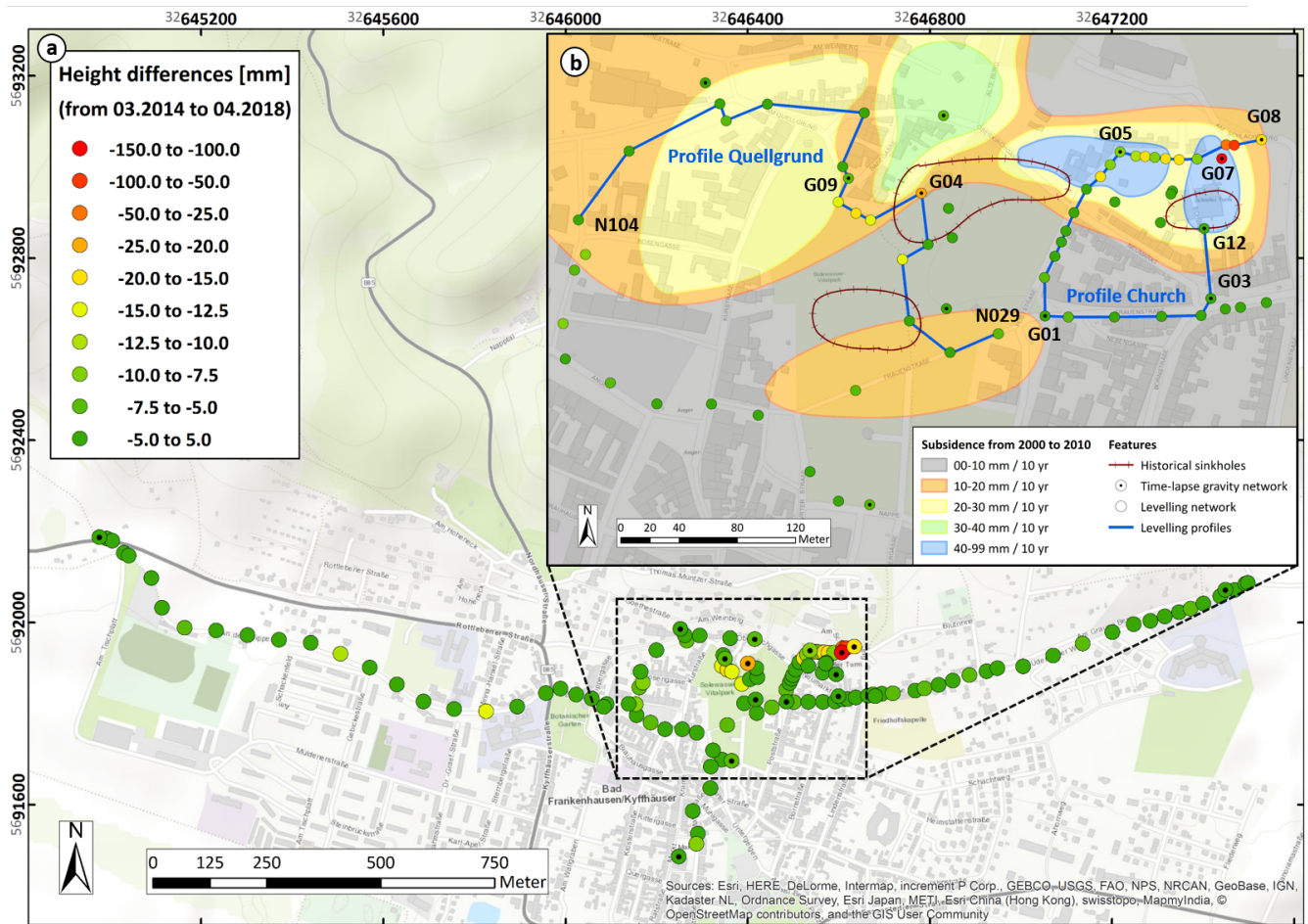


Figure 6. Levelling results over four years - (a) Measurement network in Bad Frankenhausen (BF) showing colour-coded height changes between April 2018 and the reference measurement in March 2014. Additional black points mark the [time-lapse-gravity-gravimetric](#) network. (b) Height variations over four years in the medieval centre of BF, with up to -121.7 mm at point G07. They are compared to [the location of](#) historical sinkholes (brown polygons) and the levelling results obtained by [Scholte \(2011\)](#). The blue lines mark [the current](#) levelling profiles that show the time-variable development of subsidence in Fig. 7.

is overlain by colour-coded points showing the height changes in 04.2018 relative to 03.2014. Most of the points do not change significantly in height (green colour), mainly on the E-W-profile and outside of the mentioned sinkhole areas. Here, the height variations are in the range of $\pm 2.5 \text{ mm a}^{-1}$.

Within the medieval centre of BF, two areas of continuous height changes are remarkable (yellow-orange-red dots in Fig. 6b).

- The first of which is located around the gravity points G04 and G09 and covers the western-southwestern slope area of the ancient sinkhole Quellgrund. Subsidence rates are $3.5\text{-}5.4 \text{ mm a}^{-1}$ with the local maximum of totally 21.7 mm over four years at point G04. The second area includes the gravity points G05, G07, and G08 and is located northwest-northeast of the leaning church tower. Subsidence rates are $3.0\text{-}30.4 \text{ mm a}^{-1}$ with the local maximum of totally 121.7 mm over four years at point G07.

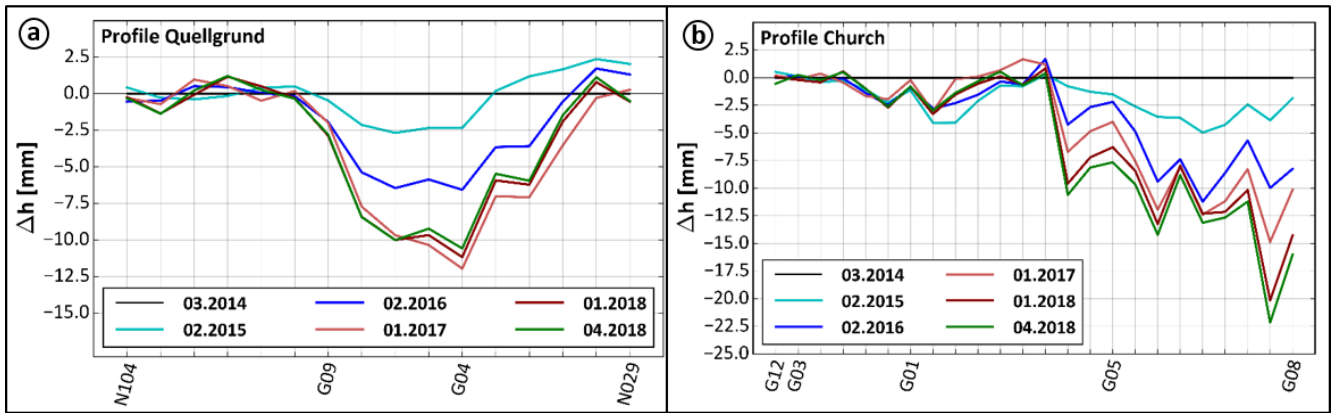


Figure 7. Levelling results along two selected profiles in the network (cf. Figure 6) showing ongoing but irregular subsidence in yearly time intervals (curves are smoothed by a weighted moving average of width three and offset due to, e.g., effects of ground frost, to emphasize the evolving subsrosion patterns) - (a) Profile alongside and across the historical Quellgrund sinkhole shows subsidence of up to 12 mm in the sinkhole and on its western-southwestern margin. (b) Profile around the leaning church tower shows subsidence of up to 22 mm along the northern part of the church tower.

Within these areas, two profiles covering the local sinkhole territory were defined to show the time-variable development of the subsidence (blue lines in Fig. 6b, profiles shown in Fig. 7). Curves are smoothed by a weighted moving average of width three (weighting factors: $w_{n-1} = 0.1$, $w_n = 0.8$, $w_{n+1} = 0.1$). Additionally, levelling observations were affected by seasonal variations, e.g., due to ground frost or drying. We reduced these seasonal and area-wide effects by using a constant offset based on seasonally constant levelling points to emphasize the evolving subsrosion patterns within instable zones. Figure 7 displays yearly variations relative to 03.2014 and additionally, the last measurement campaign in April 2018. The church profile (gravity point G07 is not included) reveals irregular subsidence from ~~the northwest to the~~ northwest to northeast of the leaning church tower, i.e. between the points G05-G08, which correlates qualitatively with the results of Scholte (2011). Subsidence rates from 2014 to 2016 were $2\text{-}6\text{ mm a}^{-1}$ and decreased since 2017 to $1\text{-}4\text{ mm a}^{-1}$ with the exception of, e.g., point G08. To the south and west of the leaning church tower no significant height changes can be detected. The Quellgrund profile shows a similar pattern. The subsidence rates from 2014 to 2016 were $0\text{-}4\text{ mm a}^{-1}$ and decreased abruptly between 2017 and 2018 to $0\text{-}0.5\text{ mm a}^{-1}$.

All height changes at gravity points were used to correct time-lapse gravity results for subsidence and to refer them to the reference campaign in 03.2014.

4.2 Time-lapse gravity

Reference points - Gravity reference points provide stability control of the whole network and the possibility to calculate gravity values plus STD for each single measurement point from the adjusted gravity differences (Δg). After least squares adjustment (LSA), the Δg between the pre-defined reference points RP1 and RP2 (cf. Fig. 3) for time-lapse gravity observation shows small but significant gravity changes and, therefore, RP1 and RP2 were not used as reference points. Reference point

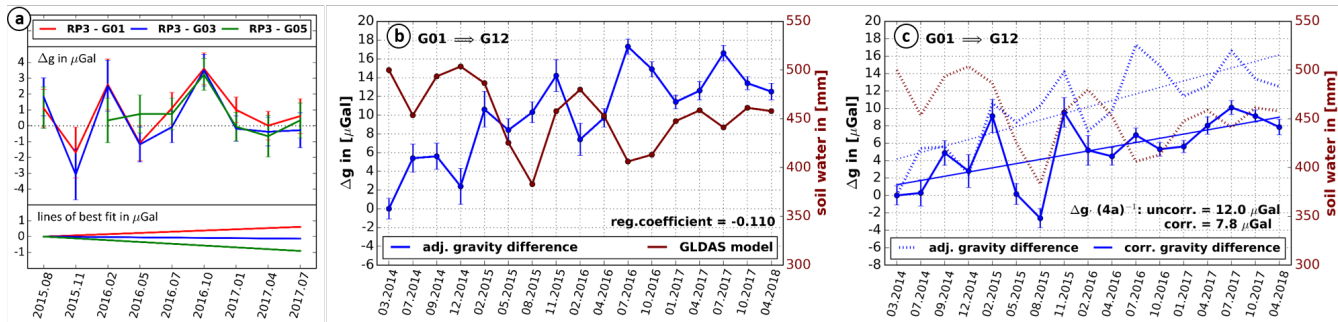


Figure 8. Results of time-lapse gravity monitoring shown by the adjusted gravity differences (Δg) between the stable reference point RP3 and the points G01, G03 and G05, as well as ~~on an~~, exemplarily shown, by the adjusted gravity difference between the points G01 and G12 ($\Delta g_{xy} = -\Delta g_{yx}$) - (a) Δg scatter around zero and reveal that the gravity points G01, G03 and G05 are stable. In addition, the best linear fit shows an insignificant trend of $<1 \mu\text{Gal}$ over two years for the three shown Δg . The Δg are based on the absolute gravity measurements at point RP3, carried out by Leibniz University Hanover (LUH), which prove that RP3 is stable (L. Timmen, LUH, personal communication). (b) Δg (blue) compared to the soil water content from GLDAS (brown), and the calculated regression coefficient between the two lines both in the dimension of $\mu\text{Gal mm}^{-1}$. (c) Δg (solid blue) corrected for soil water using the regression coefficient. Dotted lines show the previous state. Regression lines show the Δg over four years before and after the hydrological correction, as well as the decrease of the trend.

RP3 was defined later, in June 2015, and is located at the town hall site in BF. Very nearClose-by, in the cellar of the town hall, three absolute gravity campaigns were carried out in June 2015, August 2016, and August 2018. The results show, that the town hall site is stable within standard deviations of $\pm 2 \mu\text{Gal}$ ($c = 981171700 \mu\text{Gal}$; 2015: $c + 47.3 \mu\text{Gal}$; 2016: $c + 45.2 \mu\text{Gal}$; 2018: $c + 44.4 \mu\text{Gal}$; L. Timmen, Leibniz University Hanover, personal communication). In the next step, we considered the

5 temporal variations of all Δg between our network points and RP3 before correcting the hydrological effect of soil water content, to define new stable reference points for further data analysis. Figure 8a shows the variations of the Δg between RP3 and the gravity points G01, G03, and G05, which scatter around zero (including seasonal effects of $\pm 2\text{--}3 \mu\text{Gal}$) and thus, they were chosen as new reference points within our measurement network. Here, theThe algebraic sign of a Δg is dependent on the order of the sequence of calculation ($\Delta g_{xy} = -\Delta g_{yx}$). Based on the results, we assume that the new reference points were

10 stable in 2014before 08.2015 as well.

Gravity differences - In the following, all shown and discussed results are related to our reference campaign in March 2014. Gravity differences (Δg) were determined in the LSA for each possible Δg between the 12 measurement points in the northern city centre (66 overall, cf. Fig. 3c). Some of them could not be measured in a few campaigns (Col. Column 3 in Table 2) caused by, e.g., construction work. The STDs of adjusted Δg vary between 1.1 and $3.6 \mu\text{Gal}$ depending on the season, the combination

15 of used gravity meters, and the number of adjusted Δg per campaign (Table 2). From the beginning of the study until now the accuracy of the results of the LSA could be successively increased, i.a. due to the purchase of the highly precisehigh-precision gravity meters Scintrex CG5 and ZLS-Burris. These instruments perform their own correction of the gravity observations for tilt and temperature effects.

The results of the LSA are presented as an example with the temporal variations over four years of the Δg and their STD

20 between the stable point G01 (cf. Fig. 8a) and point G12, which shows the highest gravity decrease in our measurement network

Table 2. Abstract of time-lapse gravity-gravimetric field campaigns. Shown are the date of the campaigns, unusable gravity points, the gravity meters used for the observations per campaign (instruments are: G-Type LaCoste&Romberg: LCR-G, Scintrex: CG3 and CG5, ZLS-Burris: ZLS), and their number (no.). Furthermore shown are: The standard deviations of adjusted gravity differences (STD of Δg), the standard deviations of gravity values on single-measurement points (STD per point), and the total number of adjusted gravity differences (Nono. of Δg) per campaign.

campaign	period	unusable points	used gravity meters	STD of Δg +mm s⁻² [μ Gal]	STD per point +mm s⁻² [μ Gal]	<u>No</u> no. of Δg
03.2014	Mar., 18-26	<u>RP5-RP3</u>	2 LCR-G; 1 CG3; 1 CG5; no. = 4	<u>10-17-1.0-1.7</u>	<u>10-15-1.0-1.5</u>	352
07.2014	Jul., 01-05	<u>RP5-RP3</u>	2 LCR-G; 1 CG3; 1 CG5; no. = 4	<u>14-24-1.4-2.4</u>	<u>14-22-1.4-2.2</u>	250
09.2014	Sep., 15-19	<u>RP5-RP3</u>	2 LCR-G; 1 CG3; 1 CG5; no. = 4	<u>12-24-1.2-2.4</u>	<u>12-23-1.2-2.3</u>	278
12.2014	Dec., 02-06	<u>RP5RP3</u> ; G07	1 LCR-G; 1 CG3; 1 CG5; no. = 3	<u>18-34-1.8-3.4</u>	<u>18-25-1.8-2.5</u>	118
02.2015	Feb., 16-20	<u>RP5RP3</u> ; G07	2 LCR-G; 1 CG3; 1 CG5; no. = 4	<u>16-36-1.6-3.6</u>	<u>16-35-1.6-3.5</u>	152
05.2015	May., 18-22	<u>RP5RP3</u> ; G07; G08	2 LCR-G; 1 CG3; 1 CG5; no. = 4	<u>12-25-1.2-2.5</u>	<u>12-24-1.2-2.4</u>	269
08.2015	Aug., 24-28	G08	1 LCR-G; 1 CG3; 1 CG5; no. = 3	<u>11-18-1.1-1.8</u>	<u>11-15-1.1-1.5</u>	206
11.2015	Nov., 23-27	G05; G08	2 CG3; 1 CG5; no. = 3	<u>15-25-1.5-2.5</u>	<u>15-24-1.5-2.4</u>	144
02.2016	Feb., 22-26	G08	1 CG3; 2 CG5; no. = 3	<u>13-22-1.3-2.2</u>	<u>12-20-1.2-2.0</u>	160
04.2016	Apr., 25-29	G08	1 CG3; 1 CG5; no. = 2	<u>10-17-1.0-1.7</u>	<u>10-15-1.0-1.5</u>	164
07.2016	Jul., 25-29	G08	1 CG3; 2 CG5; no. = 3	<u>08-12-0.8-1.2</u>	<u>07-11-0.7-1.1</u>	260
10.2016	Oct., 17-21		2 CG3; 2 CG5; no. = 4	<u>08-12-0.8-1.2</u>	<u>08-12-0.8-1.2</u>	343
01.2017	Jan., 09-13		1 CG3; 2 CG5; 1 ZLS; no. = 4	<u>06-11-0.6-1.1</u>	<u>06-10-0.6-1.0</u>	359
04.2017	Apr., 03-07		1 CG3; 1 CG5; 1 ZLS; no. = 3	<u>07-16-0.7-1.6</u>	<u>08-14-0.8-1.4</u>	301
07.2017	Jul., 10-14		2 CG5; 1 ZLS; no. = 3	<u>07-14-0.7-1.4</u>	<u>07-12-0.7-1.2</u>	308
10.2017	Oct., 09-13		2 CG5; 1 ZLS; no. = 3	<u>07-13-0.7-1.3</u>	<u>07-12-0.7-1.2</u>	377
04.2018	Apr., 23-27	G03	2 CG5; 1 ZLS; no. = 3	<u>06-14-0.6-1.4</u>	<u>08-11-0.8-1.1</u>	374

(Fig. 8b,c; values of G12 subtracted from the values of G01). In addition, the seasonal content is obviously significant. The STDs are shown as error bars that get smaller from campaign to campaign, mostly because the LCR gravity meters of lower precision are no longer part of the instrumental setup. Assuming that point G01 is stable, the variations define a trend in Δg of $3.0 \mu\text{Gal a}^{-1}$ (dotted line in Fig. 8c), which displays an overall gravity decrease at G12 of $12.0 \mu\text{Gal}$ since 03.2014.

5 The temporal variations of Δg in Fig. 8b show seasonal signals of 2-6 μGal oscillating between minima mainly in the winter months, e.g., 12.2014 and 02.2016, and maxima mainly in the summer months, e.g., 07.2016 and 07.2017. These Δg -variations are compared to the varying soil water content obtained from the global hydrological model GLDAS (cf. Sect. 3.4).

The Δg G01-G12 correlate very well with the hydrological model (brown curve in Fig. 8b) except for the time span between 02.2015 and 11.2015, which is not clearly understood. Here, the variations in soil water content show a maximum. These peaks
10 can also be affected by other gravitational mass changes, e.g., groundwater variations, which can-not~~cannot~~ be considered here (cf. Sect. 3.4). For this example of Δg -variations, a regression coefficient of $-0.110 \mu\text{Gal mm}^{-1}$ was determined between Δg and the soil water content, and used to correct Δg for the soil water variations (Fig. 8c, solid blue curve). The hydrological correction smoothes the curve for seasonal variations in soil water content mainly in the second period of our observation, since 02.2016, and decreases the four-years trend in gravity by $4.2 \mu\text{Gal}$. Between 02.2015 and 11.2015 the hydrological correction
15 seems to produce artifactsan increase in the seasonal signal, which could also be induced by a minimum in-or~~phase shift of~~ ground water level, that is not corrected here. However, the remaining signal reveals a significant trend of gravity decrease over four years at point G12.

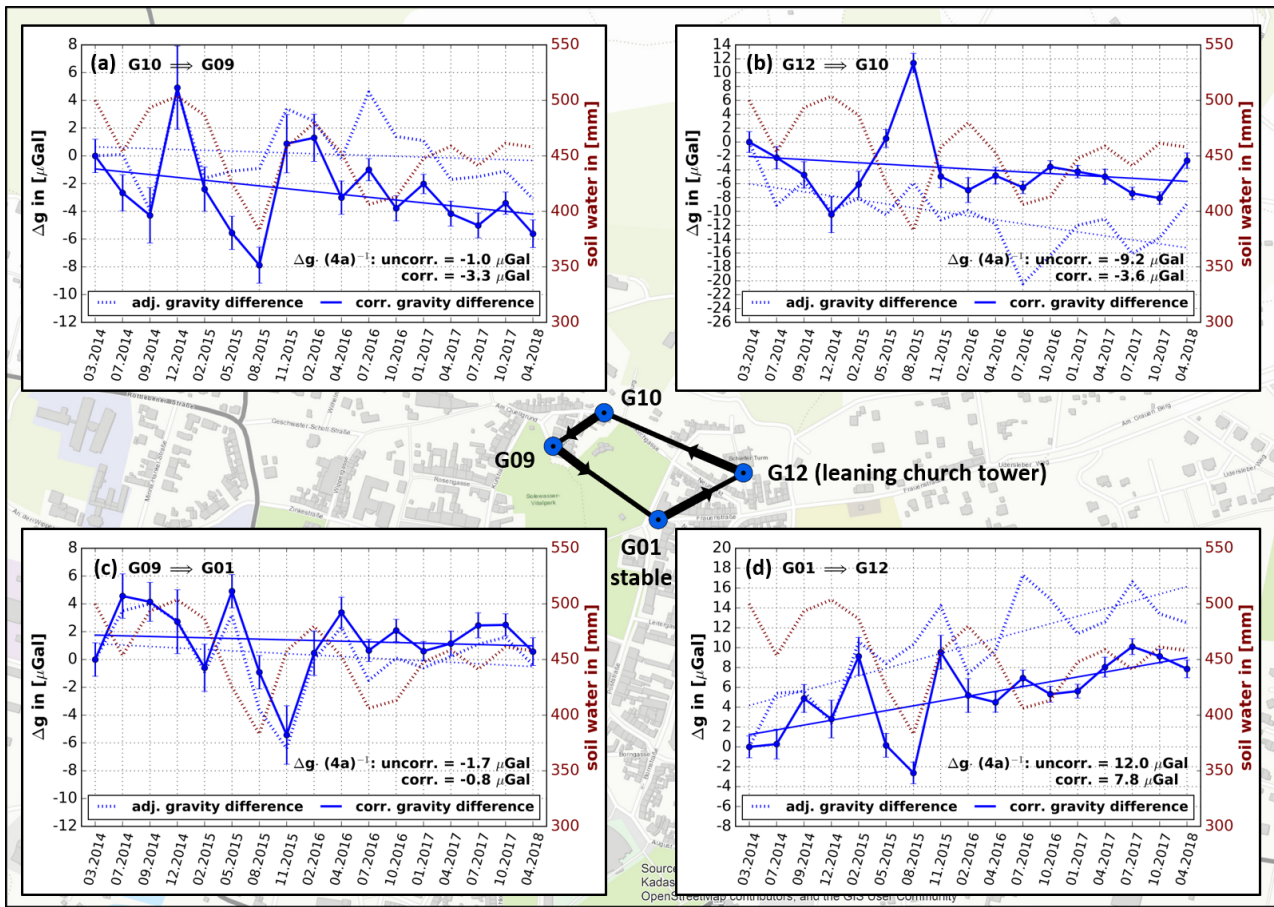


Figure 9. Selected adjusted gravity differences (Δg , $\Delta g_{xy} = -\Delta g_{yx}$) in the measurement network arranged in a rectangle consisting of the gravity points G01, G12, G10, and G09, and corrected for soil water variations - (a) Δg G10-G09 reveals gravity decrease at G10, because G09 is stable within the STD. (b) Δg G12-G10 reveals faster gravity decrease at G12 than at G10, relative to each other. (c) Δg G09-G01 shows insignificant variations and reveals that [also](#) G09 is stable within the STD. (d) Δg G01-G12 shows a significant gravity decrease at G12 [relative to G01](#), which is located next to the leaning church tower, because G01 is stable within the STD (cf Fig. 8a).

A hydrological correction applying an individual regression coefficient is done for each Δg in our network. A selection of Δg -variations arranged in a rectangle between four measurement points is shown in Fig. 9. In Fig. 9d, the above discussed Δg G01-G12 is displayed like in Fig. 8b. Firstly, the correction of seasonal variations in the other gravity differences shows the same quality in the displayed graphics as described for $\mu\Delta g$ G01-G12. Furthermore, the remaining gravity decrease of 7.8 μGal over four years in the Δg G01-G12 is related to a gravity decrease at G12. Following the variations of Δg counterclockwise results in a gravity decrease at G10 by 4.2 μGal over four years, which is the difference of the gravity decrease of 7.8 μGal at G12 and the remaining gravity variation of -3.6 μGal over four years of the Δg G12-G10 (Fig. 9b). The same procedure reveals a gravity decrease of 0.8 μGal over four years at point G09, which is insignificant and thus, G09 and its difference to G01 are stable within the STD as well (Fig. 9c). The remaining trends over four years of the [four](#) gravity differences in Fig. 9 add up to

0.1 μGal over four years, which may result from rounding during data processing and trend fitting. However, the results show the feasibility of the applied hydrological correction using individual regression coefficients for each Δg without producing any loop errors, and thus, the possibility ~~for the of~~ identification of stable or instable gravity differences in the network.

Gravity values - For gravity investigations, it is not mandatory that gravity values on installed benchmarks are stable over time

- 5 (Weise et al., 2018). ~~This has to be~~ The careful selection of the benchmark locations prior to the installation of the monitoring network is based upon the expectation of favourable noise and environmental conditions at these points. However, during the operation time of the network, these assumptions can turn out to be wrong or not sustainable, e.g. due to unknown/changing hydrological conditions of soil or ground water, or construction work. Hence, the possibility of temporal gravity changes at these benchmarks must be properly considered during interpretation and discussion of results. Under the assumption that G01, G03, and G05 are stable relative to the stable point RP3 (Fig. 8a) and relative to each other in all LSA, the absolute gravity values were set as fix for the two points G01 and G03, according to the adjusted Δg G01-G03 of the reference campaign. Then, we derived gravity values for each point in our measurement network from the LSA. Now, instead of Δg between measurement points the time-variable changes of gravity on individual gravity points are considered. Mean gravity values, each over one year of observation since the first campaign in 03.2014, are displayed in Fig. 10 as bar chart per point. They are corrected for hydrology using the changes in the gravity trends obtained from the hydrological correction in Sect. 3.4 for each gravity difference related to the stable point G01. The results reveal areas of gravitational stability and of significant gravity decrease over four years (Fig. 10). ~~Three~~ Two patterns are discernible: I. Invariable points (G01, G03, G05, G06, G08, G09) within the STD; II. Continuous gravity decrease, which is clear-obvious for the points G07, G11, and G12; ~~III. Gravity~~. The points G02, G04, and G10 show a gravity increase, that appears relative to the reference date 03.2014 in the first year (brown bar) and then also ongoing gravity decrease (G02, G04, G10). But, pattern III is the - this could be an effect of discrepancy between the mean of the first year and the reference value from the first campaign, respectively. It is conspicuous, that gravity decrease mainly is taking place within or very close to the known historical sinkhole areas (cf. Fig. 3). Furthermore, it is apparent that the gravity decrease on a single point G^{**} and the time-variable Δg between the stable point G01 and G^{**} show similar results, which is a matter of course.
- 20

25 5 Discussion

The approach here presented combines repeated levelling and time-lapse ~~gravity-gravimetric~~ surveys in a local measurement network in Bad Frankenhausen (BF), Thuringia, Central Germany. The aim is to identify surface deformation and mass transfer in the underground, in an area that is prone to subsidence, as several features on the surface reveal. After four years (17 ~~gravity~~ gravimetry and 18 levelling campaigns) of regular quarterly measurements we have obtained convincing and meaningful results, implications, and limits. Plausible surface deformation (subsidence) and gravity changes (gravity decrease) were detected in subsidence-prone areas of BF, which means mass transport in the subsurface. Although the temporal changes are small, i.e. a few μGal in gravity over four years, the surveys and later data analysis were realised at high effort to gain gravity observations with high precision. This includes a suitable measurement concept and data analysis (LSA), error estimation and propagation,

30

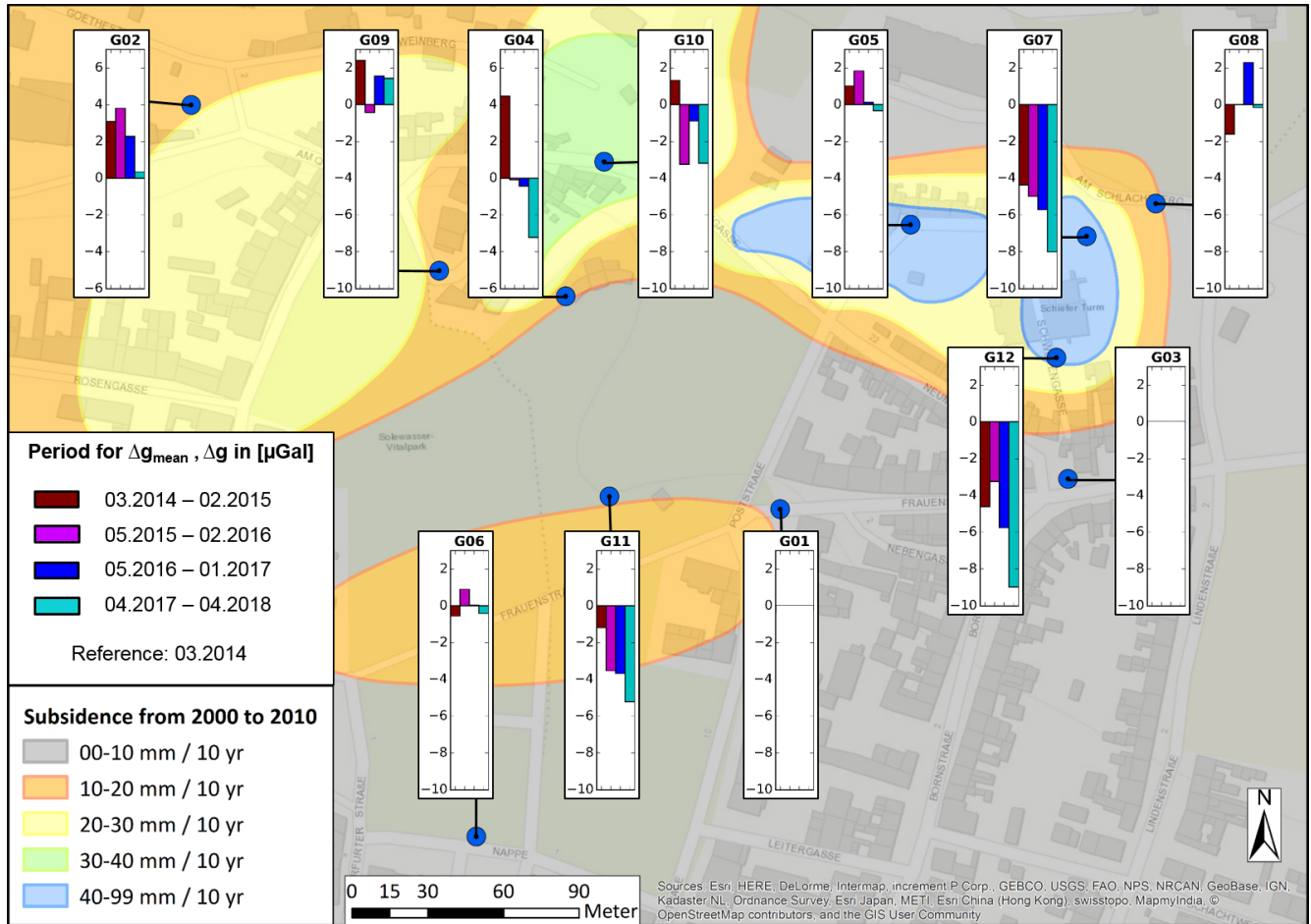



Figure 10. Temporal variations of mean gravity observations Δg_{mean} over each year of data, referenced to March 2014, on the points of the gravity-gravimetric network (blue dots). The gravity values for each survey point are derived from least squares adjustments assuming that G01 and G03 are stable over time. The adjusted gravity differences are hydrologically corrected for soil water content applying an individual regression coefficient for each gravity difference.

and finally, a new, simple, but effective method applied for hydrological correction of gravity differences (cf. Sect. 3). The below discussed results were achieved despite of challenging urban area conditions.

Levelling - Vertical deformation of several mm a^{-1} was found around the historical sinkhole areas in the measurement network. The deformation rates vary with time and strongly decrease for the campaigns in 2017, which was a rainy year. The origin of non-linear surface deformation in BF is not well understood and requires continuous observation, further research, and comparison with other data. The seasonal height variations due to ground frost would be reduced by installing holes drilled below the depth of frost and filled with longer steel piles than we did to mark levelling points (cf. Fig. 3.1).

The sources of subsidence in BF ~~could~~can be a combination of geogenic and anthropogenic origin. One evidence ~~for the-of~~ leaching of soluble rocks is the occurrence of two  natural brine sources inside of Quellgrund, ~~where~~which extract approximately 250 tons of saline solution are being extracted per day salt per day from the subsurface (TLUG, personal communication, 2017). Thus, subrosion processes and the corresponding subsidence could be affected by human activities due to water extraction. As another example, we found extensive subsidence of $7.5\text{-}30.5 \text{ mm a}^{-1}$ at three points northwards of the leaning church tower of BF, including gravity point G07 (Fig. 6b). These subsidence rates are significantly higher, than those displayed by the levelling profiles in Fig. 7. In the church area, ~~a-few~~several cavities were found at depths up to 100 m through several research core drillings ~~-,and~~(one of these was surveyed using borehole-based ultrasonic sonar (cf. Sect. 2)), which also reveals evidence for underground leaching. Partially, the high subsidence rates could be affected by compaction loading due to intensive construction and recultivation works, which were carried out northwards of the leaning church tower between 2014 and 2016. The load of the northeastward sagging tower itself has an effect on the subsidence rates in this area as well. However, the ongoing subsidence seems to show slightly lower rates after the ~~building-activities~~reconstruction work ended.

Time-lapse gravity - Besides stable gravity differences in obviously stable areas, several gravity differences and certain points in the network have been detected to show significant gravity decrease of up to about $2 \mu\text{Gal a}^{-1}$ with STD of $1\text{-}2 \mu\text{Gal}$ over the whole period of four years. This is an indication of local mass redistribution and has been observed mainly in and close to known historical sinkhole areas, which could be evidence for ongoing subrosion processes in the underground. The order of gravity decrease of $1\text{-}2 \mu\text{Gal a}^{-1}$ is small compared to the results of other studies that have investigated underground mass transfer, e.g., greater 2-digit μGal range observed by Hautmann et al. (2014) in a volcanic environment. However, the significance of the results is given by the high precision level of our gravity results ($\text{STD} \approx 1 \mu\text{Gal}$) after LSA and error propagation in our local network, as shown in Sect. 4.2 and Table 2, and by rather continuous rates of found gravity decrease. This has been proven to be due to the use of a highly accurate instrumentation and its appropriate use at measurement site conditions with a sophisticated concept of network configuration and high number of observations, as well as the regular control of their calibration stability. The STD level of the adjusted gravity differences was improved by an extensive pre-processing for data quality improvement and the high sophisticated application of LSA (e.g., drift control, required corrections, and weighting of gravity meters, cf. Sect. 3.3). Here, the accuracies of the gravity meters indeed have an effect as the used combinations of instruments show (Sect. 3.2 and Table 2). Hence, the data quality was further increased by using exclusively the newer Scintrex CG5 and ZLS Burris gravity meters, which achieve STD in the range of $3\text{-}4 \mu\text{Gal}$ for one observed gravity difference.

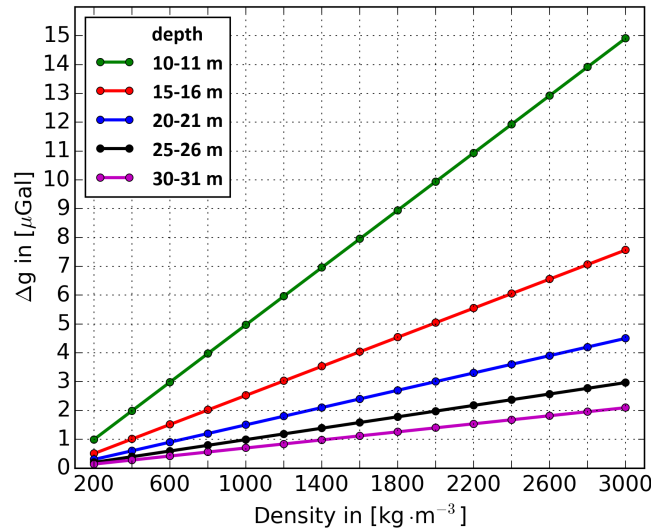


Figure 11. Expected changes in gravity against density for a 1 m thick dissolved layer located beneath a survey point and at different depths, with a spatial dimension of $dx = 10$ m, $dy = 10$ m, and $dz = 1$ m.

We were able to emphasize and interpret subsrosion-induced signals for several gravity differences on several survey points by applying a first attempt of correction for seasonal hydrological variations. We have used the global model GLDAS Noah to estimate the effect of a varying soil water content to each single gravity difference in our monitoring network. A regression coefficient for each gravity difference was determined and used to correct it for local soil water content. The regression coefficient


5 represents temporal and spatial deviations in hydrology between two different measurement points, dependent on their geological, topographical, and infrastructural conditions. Although this correction works successfully, remaining seasonal signals suggest that groundwater has to be considered additionally and the global soil water model may not be completely compatible for local studies. For future and similar studies, we propose to test repeated in-situ measurements of the soil water content using ground penetrating radar or nuclear magnetic resonance, which is especially appropriate to determine local soil water

10 content within the vadose zone (de Pasquale and Mohnke, 2014). Both methods provide spatial information for soil water distribution. In this context, time-domain reflectometry in drill holes for point-specific 1D profiles of water content can only be a first approximation because of the heterogeneity of soils and furthermore, drill holes are needed. Additionally, the remaining signal contains groundwater changes. In particular in 2015, where soil water had an extreme minimum, the signals suggest further "mass loss" (Fig. 9). Here, the gravity minimum also can hint at very low groundwater levels and hydrological mass

15 deficits in the aquifer layers. ~~Unfortunately, no~~ Unfortunately, groundwater gauges are not available in the measurement area. ~~Groundwater~~, i.e. due to the lack of information about groundwater mechanisms, it is currently not possible to make any assumption about the effect of groundwater on the time-lapse gravity records, and thus, on the subsrosion processes. Therefore, groundwater recordings at high precision level or hydrological models at best should be taken into account for future and similar studies.

An idea, in which way our results could be explained by underground mass transfer is given in Fig. 11 as a simple approximation. The gravity effect of a 1 m thick layer of different densities with horizontal dimensions of 10 m in both the x and y directions, which is located and centered beneath a single surface point, is displayed. For example, a cavity ~~as similar~~ to the one surveyed beneath the leaning church tower (cf. Sect. 2) would have to propagate for 1 m towards Earth's surface, with a density of disappearing rocks of 2600 kg m^{-3} (density measured by LIAG Hanover using drill cores from the 458 m deep research drilling at the leaning church tower of BF), to explain a gravity decrease of $6.5 \mu\text{Gal}$ (red curve). This could fit to the found gravity decrease at the gravity points G07 and G12 after about three-four years (Fig. 9), which are located very close to the leaning church tower. ~~Such~~ Erosion rates known from literature can vary from 0.1 mm a^{-1} for limestone (Waltham et al., 2005; Gabrovšek and Stepišnik, 2011) up to $0.5\text{-}1.0 \text{ m a}^{-1}$ for gypsum under favourable subrosion conditions (Waltham et al., 2005). The erosion rates determined by the approximation of our simple model are in the order of about 0.25 m a^{-1} . This fits to favourable geological subrosion conditions in our measurement area, in which the caprock mostly consists of anhydrite and gypsum. The erosion itself is proven by several small cavities (cf. Sect. 2). Also it can be discussed if the mass loss is only according to dissolution processes or if, e.g., a roof collapse of a cavity, i.e. breccia, can result in larger rate of mass loss. However, such estimations are indeed subject to the principle of ambiguity in gravity investigations, which has to be considered during interpretation. For an extensive modelling of subrosion processes based on gravity data, very long gravity time series, as well as a detailed geological model of the study area are required, which is subject to future work. In addition and for similar studies, we propose to dense-up the measurement network for areas that are ~~proven to be not demonstrably not gravitationally~~ stable (in our case, around the leaning church tower), and thus, to give up few points in stable areas due to high measurement effort. Especially in local studies, which investigate shallow structures, it is required to derive detailed information about the spatial dimension of areas that are prone to gravity decrease due to underground mass redistribution.

6 Conclusion and future work

In this study we show the feasibility and the success of an approach that combines levelling and time-lapse ~~gravity~~ gravimetric surveys in the urban area of Bad Frankenhausen in Germany, which is intensely prone to subrosion. We used ground-based time-lapse ~~gravity~~ gravimetry, which is a non-invasive and powerful geophysical tool to monitor mass movements in the underground, and ~~high-precision~~ precise levelling to investigate the accompanied subsidence. ~~Totally~~ A total of 17 time-lapse ~~gravity~~ gravimetry and 18 levelling campaigns were carried out over four years in a local combined network. Despite of challenging measurement conditions and the lack of permanent monitoring sites for environmental or hydrological parameters, we identified subrosion-related signal content in our measurements. To our knowledge, the presented field study is the first long-term, high-resolution, time-lapse gravity study in a subrosion-prone area. Furthermore,  is the first attempt to quantify mass movements related to underground leaching, as well as to correct time-lapse gravity observations records for varying soil water content using a regression coefficient. The main results and modifications for future work based on the findings can be summarized as follows:

(1) Subsidence in Bad Frankenhausen, in the order of mm ~~to~~ up to several cm per year, is an ongoing process with possible

non-linear periods, which is evidence ~~for~~of ongoing leaching.

(2) Significant gravity decrease of $1\text{--}2\ \mu\text{Gal a}^{-1}$ has been observed on several points, which is additional evidence ~~for~~of sub-surface mass relocation.

(3) Survey points should be stable with respect to seasonal elevation effects (ground frost) and inner-city noise. Well-suited are
5 poured concrete pedestals for time-lapse ~~gravity~~gravimetric surveys and drilled holes filled by steel piles for levelling, both below ~~the~~ frost depth.

(4) Survey points should be connected to a superior reference system for stability control of the whole network and significant results.

(5) Correction of gravity observations for varying soil water content using the global GLDAS Noah model is an effective ap-
10 proach to reduce the seasonal signal, but requires further investigation. We propose in-situ measurements using GPR or NMR. Additionally, we recommend ~~the~~ monitoring of the groundwater level.

(6) If time-lapse gravity monitoring is conducted in areas of large subsidence, a more precise determination of the vertical gravity gradient should be considered to improve the correction of height changes in the time-lapse gravity records. Even more, the vertical gravity gradient can be considered as a separate parameter to be monitored. The second or even third derivative of the gravity potential is more sensitive to near-surface density variations, i.e. subrosion-induced mass changes (e.g., Eppelbaum, 2009). However, a precise determination of the gradient requires much effort and is of course also sensitive to near-surface hydrological mass variations.
15

(7) For similar studies, we recommend ~~the use of exclusively~~to exclusively use highly precise gravity meters (Scintrex CG5 or CG6, ZLS Burris) and observing gravity differences at least ~~3-5 times each~~three times each with three to four instruments
20 in order to improve the quality and validity of gravity differences significantly.

(78) After four years of observation, it ~~is~~becomes possible to model or quantify the amount of weakening of soluble layers by leaching or subsurface cavity growth. However, longer time series, i.e. additional data acquisition, are required to increase the resilience of the approach presented and ~~check gravity variations for~~to detect non-linearities in gravity variations.

(89) In support of point 78: Due to ambiguity in gravimetry, determination of the spatial extent of local areas, in which gravity
25 is changing, requires local densification of the measurement network~~due to ambiguity in gravimetry~~.

Besides ongoing data acquisition, the next step is to create a geological model of the study area based on close-mesh ~~structural gravimetric investigations of the Bouguer anomaly field~~Bouguer anomalies, physical rock parameters derived from other studies in this area (e.g., Wadas et al., 2016), and borehole measurements. On the basis of this model, we aim to identify
30 ~~the~~ depth and thickness of potential sinkhole areas in BF and to investigate additional structures which are not being resolved by our time-lapse observations yet. The time-variable subrosion-induced mass transports will be then investigated related to their depth and extent by adapting the geological model for each survey period.

In future and for similar studies, it is recommendable to place focus on the investigation of the role of hydrology and its parameters (e.g., flow intensity, flow path, flow direction) for sinkhole development.

Data availability. Geodetic-gravimetric data are property of LIAG Hanover and will be used for further investigations and publications by the authors. The data are available from the authors upon request. Please contact the first author for details. The specific soil water model GLDAS Noah here used is provided by [Beaudoin and Rodell \(2016\)](#).


Acknowledgements. ~~We would like to thank~~ Sincere thanks are given to the technical staff of LIAG Hanover for extensive measurement work despite of difficult weather circumstances: Jan Bergmann-Barrocas, Jan Bayerle, Dieter Eppig, Eckhardt Großmann, Norman Krause, Sven Wedig and Erwin Wagner. ~~We~~ Furthermore, we thank Ludger Timmen and the University of Hanover, Germany, for the frequent loan of a Scintrex CG3 gravity meter. We ~~thank~~ appreciate David Tanner for giving advice and his help to improve the manuscript as well as the English grammar and spelling. We acknowledge the valuable reviews of the reviewers Carla Braitenberg and Lev Eppelbaum that have contributed to the improvement of this article.

The work is part of the project SIMULTAN funded by the Federal Ministry for Education and Research (BMBF, grant no. 03G0843A), which is gratefully acknowledged.

References

- Al-Halbouni, D., Holohan, E. P., Saberi, L., Alrshdan, H., Sawarieh, A., Closson, D., Walter, T. R., and Dahm, T.: Sinkholes, subsidence and subrosion on the eastern shore of the Dead Sea as revealed by a close-range photogrammetric survey, *Geomorphology*, 285, 305–324, <https://doi.org/10.1016/j.geomorph.2017.02.006>, 2017.
- 5 Al-Halbouni, D., Holohan, E. P., Taheri, A., Schöpfer, M. P. J., Emam, S., and Dahm, T.: Geomechanical modelling of sinkhole development using Distinct Elements: Model verification for a single void space and application to the Dead Sea area, *Solid Earth Discuss.*, <https://doi.org/10.5194/se-2018-62>, 2018.
- Augarde, C. E., Lyamin, A. V., and Sloan, S. W.: Prediction of Undrained Sinkhole Collapse, *J. Geotechn. Geoenviron.*, 129, 197–205, [https://doi.org/10.1061/\(ASCE\)1090-0241\(2003\)129:3\(197\)](https://doi.org/10.1061/(ASCE)1090-0241(2003)129:3(197)), 2003.
- 10 Aurit, M. D., Peterson, R. O., and Blanford, J. I.: A GIS Analysis of the Relationship between Sinkholes, Dry-Well Complaints and Groundwater Pumping for Frost-Freeze Protection of Winter Strawberry Production in Florida, *PLoS ONE*, 8, e53832, <https://doi.org/10.1371/journal.pone.0053832>, 2013.
- Beaudoing, H. and Rodell, M.: GLDAS Noah Land Surface Model L4 monthly 0.25 x 0.25 degree V2.1, Greenbelt, Maryland, USA, Goddard Earth Sciences Data and Information Services Center (GES DISC), last access: 07 September 2018, NASA/GSFC/HSL, <https://doi.org/10.5067/SXAVCZFAQLNO>, 2016.
- 15 Beck, B. F.: Environmental and engineering effects of Sinkholes—the processes behind the problems, *Environ. Geol.*, 12, 71–78, <https://doi.org/10.1007/BF02574791>, 1988.
- Beck, B. F.: Soil piping and sinkhole failures, in: *Encyclopedia of Caves (Second Edition)*, pp. 718–723, Elsevier, 2012.
- Bell, F. G.: Subsidence associated with the abstraction of fluids, *Geol. Soc., London, Engin. Geol. Spec. Public.*, 5, 363–376, <https://doi.org/10.1144/GSL.ENG.1988.005.01.40>, 1988.
- 20 Benito-Calvo, A., Gutiérrez, F., Martínez-Fernández, A., Carbonel, D., Karampaglidis, T., Desir, G., Sevil, J., Guerrero, J., Fabregat, I., and García-Arnav, A.: 4D Monitoring of Active Sinkholes with a Terrestrial Laser Scanner (TLS): A Case Study in the Evaporite Karst of the Ebro Valley, NE Spain, *Remote Sensing*, 10, 571–589, <https://doi.org/10.3390/rs10040571>, 2018.
- Bonatz, M.: Der Gravitationseinfluss der Bodenfeuchtigkeit, *Zeitschrift für Vermessungswesen*, 92, 135–139, 1967.
- 25 Bosch, F. P. and Müller, I.: Continuous gradient VLF measurements: a new possibility for high resolution mapping of karst structure, *First Break*, 19, 343–350, <https://doi.org/10.1046/j.1365-2397.2001.00173.x>, 2001.
- Brady, B. H. G. and Brown, E. T.: *Rock Mechanics - For underground mining*, Springer Science, Berlin, Germany, 3rd edn., <https://doi.org/10.1007/978-1-4020-2116-9>, 2006.
- [Braitenberg, C., Sampietro, D., Pivetta, T., Zuliani, D., Barbagallo, A., Fabris, P., Rossi, L., Fabbri, L., and Mansi, A. H.: Gravity for Detecting Caves: Airborne and Terrestrial Simulations Based on a Comprehensive Karstic Cave Benchmark, *Pure Appl. Geophys.*, 173, 1243–1264, <https://doi.org/10.1007/s00024-015-1182-y>, 2016.](https://doi.org/10.1007/s00024-015-1182-y)
- 30 Brinkmann, R., Parise, M., and Dye, D.: Sinkhole distribution in a rapidly developing urban environment: Hillsborough County, Tampa Bay area, Florida, *Eng. Geol.*, 99, 169–184, <https://doi.org/10.1016/j.enggeo.2007.11.020>, 2008.
- Caramanna, G., Ciotoli, G., and Nisio, S.: A review of natural sinkhole phenomena in Italian plain areas, *Nat. Hazards*, 45, 145–172, <https://doi.org/10.1007/s11069-007-9165-7>, 2008.
- 35 Carbone, D., Poland, M. P., Diamant, M., and Greco, F.: The added value of time-variable microgravimetry to the understanding of how volcanoes work, *Earth-Sci. Rev.*, 169, 146–179, <https://doi.org/10.1016/j.earscirev.2017.04.014>, 2017.

- Champollion, C., Deville, S., Chéry, J., Doerflinger, E., Le Moigne, N., Bayer, R., Vernant, P., and Mazzilli, N.: Estimating epikarst water storage by time-lapse surface-to-depth gravity measurements, *Hydrol. Earth Syst. Sci.*, **22**, 3825–3839, <https://doi.org/10.5194/hess-22-3825-2018>, 2018.
- Cooper, A. H.: Subsidence and foundering of strata caused by the dissolution of Permian gypsum in the Ripon and Bedale areas, North Yorkshire, *Geol. Soc., London, Spec. Public.*, **22**, 127–139, <https://doi.org/10.1144/GSL.SP.1986.022.01.11>, 1986.
- Dahm, T., Kühn, D., Ohrnberger, M., Kröger, J., Wiederhold, H., Reuther, C. D., Dehghani, A., and Scherbaum, F.: Combining geophysical data sets to study the dynamics of shallow evaporites in urban environments: Application to Hamburg, Germany, *Geophys. J. Int.*, **181**, 154–172, <https://doi.org/10.1111/j.1365-246X.2010.04521.x>, 2010.
- de Pasquale, G. and Mohnke, O.: Numerical Study of Prepolarized Surface Nuclear Magnetic Resonance in the Vadose Zone, *Vadose Zone Journal*, **13**, 1–9, <https://doi.org/10.2136/vzj2014.06.0069>, 2014.
- Desir, G., Gutiérrez, F., Merino, J., Carbonel, D., Benito-Calvo, A., Guerrero, J., and Fabregat, I.: Rapid subsidence in damaging sinkholes: Measurement by high-precision leveling and the role of salt dissolution, *Geomorphology*, **303**, 393–409, <https://doi.org/10.1016/j.geomorph.2017.12.004>, 2018.
- Deville, S., Jacob, T., Chéry, J., and Champollion, C.: On the impact of topography and building mask on time varying gravity due to local hydrology, *Geophys. J. Int.*, **192**, 82–93, <https://doi.org/10.1093/gji/ggs007>, 2013.
- Eppelbaum, L. V.: Application of Microgravity at Archaeological Sites in Israel: Some Estimation Derived from 3-D Modeling and Quantitative Analysis of Gravity Field, in: *Proceedings of the 22nd Symposium on the Application of Geophysics to Engineering and Environmental Problems 2009 (SAGEEP)*, pp. 434–446, 2009.
- Ezersky, M. G., Eppelbaum, L. V., Al-Zoubi, A., Keydar, S., Abueladas, A., Akkawi, E., and Medvedev, B.: Geophysical prediction and following development sinkholes in two Dead Sea areas, Israel and Jordan, *Environ. Earth Sci.*, **70**, 1463–1478, <https://doi.org/10.1007/s12665-013-2233-2>, 2013.
- Filin, S., Baruch, A., Avni, Y., and Marco, S.: Sinkhole characterization in the Dead Sea area using airborne laser scanning, *Nat. Hazards*, **58**, 1135–1154, <https://doi.org/10.1007/s11069-011-9718-7>, 2011.
- Ford, D. and Williams, P. D.: *Karst Hydrogeology and Geomorphology*, Wiley, Chichester, <https://doi.org/10.1002/9781118684986>, 2007.
- Ford, T. W. and Quiring, S. M.: Comparison and application of multiple methods for temporal interpolation of daily soil moisture, *Int. J. Climatol.*, **34**, 2604–2621, <https://doi.org/10.1002/joc.3862>, 2013.
- Gabrovšek, F. and Stepišnik, U.: On the formation of collapse dolines: A modelling perspective, *Geomorphology*, **134**, 23–31, <https://doi.org/10.1016/j.geomorph.2011.06.007>, 2011.
- Gómez-Ortiz, D. and Martín-Crespo, T.: Assessing the risk of subsidence of a sinkhole collapse using ground penetrating radar and electrical resistivity tomography, *Eng. Geol.*, **149–150**, 1–12, <https://doi.org/10.1016/j.enggeo.2012.07.022>, 2012.
- Gutiérrez, F.: Sinkhole Hazards, *Oxf. Res. Encyclop. Nat. Haz. Sci.*, pp. 1–85, <https://doi.org/10.1093/acrefore/9780199389407.013.40>, 2016.
- Gutiérrez, F. and Lizaga, I.: Sinkholes, collapse structures and large landslides in an active salt dome submerged by a reservoir: The unique case of the Ambal ridge in the Karun River, Zagros Mountains, Iran, *Geomorphology*, **254**, 88–103, <https://doi.org/10.1016/j.geomorph.2015.11.020>, 2016.
- Gutiérrez, F., Guerrero, J., and Lucha, P.: A genetic classification of sinkholes illustrated from evaporite paleokarst exposures in Spain, *Environ. Geol.*, **53**, 993–1006, <https://doi.org/10.1007/s00254-007-0727-5>, 2008.

- Gutiérrez, F., Parise, M., De Waele, J., and Jourde, H.: A review on natural and human-induced geohazards and impacts in karst, *Earth-Sci. Rev.*, 138, 61–88, <https://doi.org/10.1016/j.earscirev.2014.08.002>, 2014.
- Hautmann, S., Gottsmann, J., Camacho, A. G., Van Camp, M., and Fournier, N.: Continuous and campaign-style gravimetric investigations on Montserrat 2006 to 2009, *Geol. Soc. London, Memoirs*, 39, 241–251, <https://doi.org/10.1144/M39.14>, 2014.
- 5 Higuera-Díaz, I. C., Carpenter, P. J., and Thompson, M. D.: Identification of buried sinkholes using refraction tomography at Ft. Campbell Army Airfield, Kentucky, *Environ. Geol.*, 53, 805–812, <https://doi.org/10.1007/s00254-007-0693-y>, 2007.
- Hunt, B. B., Smith, B. A., Adams, M. T., Hiers, S. E., and Brown, N.: Cover-Collapse Sinkhole Development in the Cretaceous Edwards Limestone, Central Texas, in: *Proceedings of the 13th Multidisciplinary Conference on Sinkholes and the Engineering and Environmental Impacts of Karst*, Carlsbad, New Mexico., edited by Land, L., Doctor, D. H., and Stephenson, J. B., pp. 89–102, 2013.
- 10 Intrieri, E., Gigli, G., Nocentini, M., Lombardi, L., Mugnai, F., Fidolini, F., and Casagli, N.: Sinkhole monitoring and early warning: An experimental and successful GB-InSAR application, *Geomorphology*, 241, 304–314, <https://doi.org/10.1016/j.geomorph.2015.04.018>, 2015.
- Jacob, T., Bayer, R., Chery, J., and Le Moigne, N.: Time-lapse microgravity surveys reveal water storage heterogeneity of a karst aquifer, *J. Geophys. Res.-Sol. Ea.*, 115, B06402, <https://doi.org/10.1029/2009JB006616>, 2010. 
- 15 Jentzsch, G., Weise, A., Rey, C., and Gerstenecker, C.: Gravity Changes and Internal Processes: Some Results Obtained from Observations at Three Volcanoes, in: *Geodetic and Geophysical Effects Associated with Seismic and Volcanic Hazards*, pp. *Pure Appl. Geophys.*, 161, 1415–1431, *Birkhäuser Basel*, <https://doi.org/10.1007/s00024-004-2512-7>, 2004.
- Jentzsch, G., Schulz, R., and Weise, A.: Automated Burris gravity meter for single and continuous observation, *Geodesy and Geodynamics*, 9, 204–209, <https://doi.org/10.1016/j.geog.2017.09.007>, 2018.
- 20 Kanngieser, E., Kummer, K., Torge, W., and Wenzel, H.-G.: *Das Gravimeter-Eichsystem Hannover*, 120, *Wissenschaftliche Arbeiten der Fachrichtung Vermessungswesen der Universität Hannover*, 1983.
- Kaufmann, G.: Geophysical mapping of solution and collapse sinkholes, *J. Appl. Geophys.*, 111, 271–288, <https://doi.org/10.1016/j.jappgeo.2014.10.011>, 2014.
- Kaufmann, G., Romanov, D., Tippelt, T., Vienken, T., Werban, U., Dietrich, P., Mai, F., and Börner, F.: Mapping and modelling of collapse sinkholes in soluble rock: The Münsterdorf site, northern Germany, *J. Appl. Geophys.*, 154, 64–80, <https://doi.org/10.1016/j.jappgeo.2018.04.021>, 2018.
- 25 Kawashima, K., Aydan, O., Aoki, T., Kishimoto, I., Konagai, K., Matsui, T., Sakuta, J., Takahashi, N., Teodori, S.-P., and Yashima, A.: Reconnaissance Investigation on the Damage of the 2009 L'Aquila, Central Italy Earthquake, *J. Earthq. Eng.*, 14, 817–841, <https://doi.org/10.1080/13632460903584055>, 2010.
- 30 Kent, J. D. and Dunaway, L.: Real-Time GPS Network Monitors Bayou Corne Sinkhole Event, *Eos*, 94, 1–2, <https://doi.org/10.1002/2013EO430002>, 2013.
- Kersten, T., Kobe, M., Gabriel, G., Timmen, L., Schön, S., and Vogel, D.: Geodetic monitoring of subsidence processes induced by subrosion in urban areas, *J. Appl. Geodesy*, 11, 21–29, <https://doi.org/10.1515/jag-2016-0029>, 2017.
- Klees, R., Reudink, R. H. C., and Flikweert, P. L. M.: Tilt Susceptibility of the Scintrex CG-5 Autograv Gravity Meter Revisited, in: *International Association of Geodesy Symposia*, https://doi.org/10.1007/1345_2017_4, 2017.
- 35 [Knolle, F., Kempe, S., Vogel, B., and Rupp, H.: World-wide largest Biosphere Reserve on sulphate karst and the schlotten caves - endangered geo- and biodiversity hotspots in the South Harz, Germany, in: Proceedings of the 17th International Speleology Congress, Sydney, Australia, edited by Moore, S. and White, K., vol. 1, pp. 149–152, 2017.](#)

- Krawczyk, C. M., Polom, U., Trabs, S., and Dahm, T.: Sinkholes in the city of Hamburg—new urban shear-wave reflection seismic system enables high-resolution imaging of subsosion structures, *J. Appl. Geophys.*, 78, 133–143, <https://doi.org/10.1016/j.jappgeo.2011.02.003>, 2012.
- Krawczyk, C. M., Polom, U., and Buness, H.: Geophysikalische Schlüsselparmeter zur Überwachung von Erdfällen – Stand und Ziele der aktiven Seismik, in: *DGG-Sonderband Geohazards/Sinkholes I/2015*, pp. 19–30, Deutsche Geophysikalische Gesellschaft (DGG), Hannover, 2015.
- Kugler, H.: Studien zur pleistozänen Formung der Hainleite, der Windleite, des Wippertals und des Frankenhäuser Beckens, *Wissenschaftliche Zeitschrift der Karl-Marx-Universität Leipzig*, 2, 355–385, 1958.
- Kupetz, M. and Mucke, D.: Beiträge zur Geologie und Genese der Barbarossahöhle bei Rottleben am Kyffhäuser und Mansfelder Mulde., *Wissenschaftlich-Technischer Informationsdienst des Zentralen Geologischen Instituts der DDR*, 30, Reihe A, Heft 2, pp. 96–103, 1989.
- Lambrecht, J. L., Miller, R. D., and Durrant, S.: Time-Lapse High Resolution Seismic Imaging of A Catastrophic Salt Dissolution Sinkhole In Central Kansas, in: *Symposium on the Application of Geophysics to Engineering and Environmental Problems 2005*, pp. 943–951, Society of Exploration Geophysicists, 2005.
- Lee, E. J., Shin, S. Y., Ko, B. C., and Chang, C.: Early sinkhole detection using a drone-based thermal camera and image processing, *Infrared Phys. Techn.*, 78, 223–232, <https://doi.org/10.1016/j.infrared.2016.08.009>, 2016.
- Lei, M., Gao, Y., Jiang, X., and Guan, Z.: Emergency investigation of extremely large sinkholes, Maohe, Guangxi, China, in: *Proceedings of the 13th Multidisciplinary Conference on Sinkholes and the Engineering and Environmental Impacts of Karst*. Carlsbad, New Mexico, edited by Land, L., Doctor, D. H., and Stephenson, J. B., pp. 293–297, 2013.
- Leica Geosystems AG, S.: Leica DNA03/DNA10 User Manual, 2 edn., <http://surveyequipment.com/assets/index/download/id/59/>, 2006.
- Lollino, P., Martimucci, V., and Parise, M.: Geological survey and numerical modeling of the potential failure mechanisms of underground caves, *Geosys. Engin.*, 16, 100–112, <https://doi.org/10.1080/12269328.2013.780721>, 2013.
- Meng, L. and Quiring, S. M.: A Comparison of Soil Moisture Models Using Soil Climate Analysis Network Observations, *J. Hydrometeorol.*, 9, 641–659, <https://doi.org/10.1175/2008JHM916.1>, 2008.
- Mesescu, A. A.: The Ocele Mari salt mine collapsing sinkhole - A NATECH breakdown in the Romanian sub-carpathians, *Carpath. J. Earth. Env.*, 6, 215–220, 2011.
- Messerklinger, S.: Formation mechanism of large subsidence sinkholes in the Lar valley in Iran, *Q. J. Engin. Geol. Hydrogeol.*, 47, 237–250, <https://doi.org/10.1144/qjegh2012-062>, 2014.
- Miao, X., Qiu, X., Wu, S.-S., Luo, J., Gouzie, D. R., and Xie, H.: Developing Efficient Procedures for Automated Sinkhole Extraction from Lidar DEMs, *Photogramm. Engin. Rem. Sens.*, 79, 545–554, <https://doi.org/10.14358/PERS.79.6.545>, 2013.
- Miensopust, M. P., Igel, J., Günther, T., Dlugosch, R., and Hupfer, S.: Electric and Electromagnetic Investigation of a Karst System, in: *Near Surface Geoscience 2015 - 21st European Meeting of Environmental and Engineering Geophysics*, <https://doi.org/10.3997/2214-4609.201413704>, 2015.
- Milanovic, P.: The environmental impacts of human activities and engineering constructions in karst regions, *Episodes*, 25, 13–21, 2002.
- Mäkinen, J. and Tattari, S.: Soil moisture and groundwater: Two sources of gravity variations, *Bull. Info. Mar. Terr.*, 62, 103–110, 1988.
- Naujoks, M., Weise, A., Kroner, C., and Jahr, T.: Detection of small hydrological variations in gravity by repeated observations with relative gravimeters, *J. Geodesy*, 82, 543–553, <https://doi.org/10.1007/s00190-007-0202-9>, 2008.
- Nof, R. N., Baer, G., Ziv, A., Raz, E., Atzori, S., and Salvi, S.: Sinkhole precursors along the Dead Sea, Israel, revealed by SAR interferometry, *Geology*, 41, 1019–1022, <https://doi.org/10.1130/G34505.1>, 2013.

- Nooner, S. L., Eiken, O., Hermanrud, C., Sasagawa, G. S., Stenvold, T., and Zumberge, M. A.: Constraints on the in situ density of CO₂ within the Utsira formation from time-lapse seafloor gravity measurements, *Int. J. Greenh. Gas Con.*, 1, 198–214, [https://doi.org/10.1016/S1750-5836\(07\)00018-7](https://doi.org/10.1016/S1750-5836(07)00018-7), 2007.
- Parise, M. and Lollino, P.: A preliminary analysis of failure mechanisms in karst and man-made underground caves in Southern Italy, *Geomorphology*, 134, 132–143, <https://doi.org/10.1016/j.geomorph.2011.06.008>, 2011.
- Patterson, D., Davey, J. C., Cooper, A. H., and Ferris, J. K.: The application of microgravity geophysics in a phased investigation of dissolution subsidence at Ripon, Yorkshire, *Q. J. Engin. Geol.*, 28, 83–94, <https://doi.org/10.1144/GSL.QJEGH.1995.028.P1.08>, 1995.
- Pazzi, V., Di Filippo, M., Di Nezza, M., Carlà, T., Bardi, F., Marini, F., Fontanelli, K., Intrieri, E., and Fanti, R.: Integrated geophysical survey in a sinkhole-prone area: Microgravity, electrical resistivity tomographies, and seismic noise measurements to delimit its extension, *Eng. Geol.*, 243, 282–293, <https://doi.org/10.1016/j.enggeo.2018.07.016>, 2018.
- Pfeffer, J., Champollion, C., Favreau, G., Cappelaere, B., Hinderer, J., Boucher, M., Nazoumou, Y., Oï, M., Mouyen, M., Henri, C., Le Moigne, N., Deroussi, S., Demarty, J., Boulain, N., Benarrosh, N., and Robert, O.: Evaluating surface and subsurface water storage variations at small time and space scales from relative gravity measurements in semiarid Niger, *Water Resour. Res.*, 49, 3276–3291, <https://doi.org/10.1002/wrcr.20235>, 2013.
- Pivetta, T. and Braitenberg, C.: Laser-scan and gravity joint investigation for subsurface cavity exploration - The Grotta Gigante benchmark, *Geophysics*, 80, B83–B94, <https://doi.org/10.1190/GEO2014-0601.1>, 2015.
- Polom, U., Alrshdan, H., Al-Halbouni, D., Holohan, E. P., Dahm, T., Sawarieh, A., Atallah, M. Y., , and Krawczyk, C. M.: Shear wave reflection seismics yields subsurface dissolution and subrosion patterns: application to the Ghor Al-Haditha sinkhole site, Dead Sea, Jordan, *Solid Earth*, 9, 1079–1098, <https://doi.org/10.5194/se-2018-22>, 2018.
- Reudink, R., Klees, R., Francis, O., Kusche, J., Schlesinger, R., Shabanloui, A., Sneeuw, N., and Timmen, L.: High tilt susceptibility of the Scintrex CG-5 relative gravimeters, *J. Geodesy*, 88, 617–622, <https://doi.org/10.1007/s00190-014-0705-0>, 2014.
- Reuter, F.: Gebäudeschäden durch Untergrundsunkungen in Bad Frankenhausen (Kyffhäuser), internal report (unpublished), 1962.
- Richter, B. and Bernburg, G.: Stratigraphische Gliederung des deutschen Zechsteins, *Zeitschrift der Deutschen Geologischen Gesellschaft*, 105, 843–854, 1953.
- Rodell, M., Houser, P. R., Jambor, U., Gottschalk, J., Mitchell, K., Meng, C.-J., Arsenault, K., Cosgrove, B., Radakovich, J., Bosilovich, M., Entin, J. K., Walker, J. P., Lohmann, D., and Toll, D.: The global land data assimilation system, *Bull. Am. Meteorol. Soc.*, 85, 381–394, <https://doi.org/10.1175/BAMS-85-3-381>, 2004.
- Rybakov, M., Goldshmidt, V., Fleischer, L., and Rotstein, Y.: Cave detection and 4-D monitoring: A microgravity case history near the Dead Sea, *The Leading Edge*, 20, 896–900, <https://doi.org/10.1190/1.1487303>, 2001.
- Rybakov, M., Rotstein, Y., Shirman, B., and Al-Zoubi, A.: Cave detection near the Dead Sea - a micromagnetic feasibility study, *The Leading Edge*, 24, 585–590, <https://doi.org/10.1190/1.1946210>, 2005.
- Sahu, P. and Lokhande, R. D.: An Investigation of Sinkhole Subsidence and its Preventive Measures in Underground Coal Mining, *Proced. Ea. Plan. Sci.*, 11, 63–75, <https://doi.org/10.1016/j.proeps.2015.06.009>, 2015.
- Sandia National Laboratories: September 2016 Bayou Choctaw Subsidence Report, <https://prod.sandia.gov/techlib-noauth/access-control.cgi/2017/175688r.pdf>, 2016.
- Sargent, C. and Goulty, N. R.: Seismic reflection survey for investigation of gypsum dissolution and subsidence at Hell Kettles, Darlington, UK, *Q. J. Engin. Geol. Hydrogeol.*, 42, 31–38, <https://doi.org/10.1144/1470-9236/07-071>, 2009.

- Schmidt, W.: Geological and Geotechnical Investigation Procedures for Evaluation of the Causes of Subsidence Damage in Florida, Flor. Geol. Sur. Spec. Publi., 57, 1–28, 2005.
- Scholte, B.: Kurzbericht zum Senkungsnivellement, zur Schiefstellung der Kirche und zum Horizontalverschiebungsnetz im Bewilligungsfeld Kyffhäuser Sole der Kur-Gesellschaft mbH Bad Frankenhausen, Glückauf-Vermessung GmbH Sondershausen, internal report (unpublished), 2011.
- Schriel, W. and Bülow, K. V.: Geologische Karte von Preußen und benachbarten deutschen Ländern. Map Frankenhausen 4632, Lieferung 9, 2. Auflage, Preußische Geologische Landesanstalt, Berlin, Germany, 1926a.
- Schriel, W. and Bülow, K. V.: Geologische Karte von Preußen und benachbarten deutschen Ländern. Map Kelbra 4532, Lieferung 9, 2. Auflage, Preußische Geologische Landesanstalt, Berlin, Germany, 1926b.
- 10 Scintrex: CG-3/3M Autograv - Automated Gravity Meter Operator Manual, <https://scintrexltd.com/wp-content/uploads/2017/02/CG3-Manual.pdf>, 1995.
- Scintrex: CG5 Scintrex Autograv System Operation Manual, <https://www.aseg.org.au/sites/default/files/Scintrex-CG5manualrelease1.pdf>, 2006.
- Seidel, G.: Geologie von Thüringen (The Geology of Thuringia), E. Schweizerbart'sche Verlagsbuchhandlung, Stuttgart, Germany, 2nd edn., 15 2003.
- Sevil, J., Gutiérrez, F., Zarroca, M., Desir, G., Carbonel, D., Guerrero, J., Linares, R., Roque, C., and Fabregat, I.: Sinkhole investigation in an urban area by trenching in combination with GPR, ERT and high-precision leveling. Mantled evaporite karst of Zaragoza city, NE Spain, Eng. Geol., 231, 9–20, <https://doi.org/10.1016/j.enggeo.2017.10.009>, 2017.
- Shviro, M., Haviv, I., and Baer, G.: High-resolution InSAR constraints on flood-related subsidence and evaporite dissolution along the Dead Sea shores: Interplay between hydrology and rheology, Geomorphology, 293, Part A, 53–68, <https://doi.org/10.1016/j.geomorph.2017.04.033>, 2017.
- 20 Song, K.-I., Cho, G.-C., and Chang, S.-B.: Identification, remediation, and analysis of karst sinkholes in the longest railroad tunnel in South Korea, Eng. Geol., 135–136, 92–105, <https://doi.org/10.1016/j.enggeo.2012.02.018>, 2012.
- Timmen, L.: Absolute and Relative Gravimetry, in: Sciences in Geodesy I - Advances and Future Directions, edited by Xu, G., pp. 1–43, 25 Springer-Verlag, Berlin, Heidelberg, 2010.
- Timmen, L., Falk, R., Gabriel, G., Lothhammer, A., Schilling, M., and Vogel, D.: The Relative Gravimeter Calibration System Hannover for 10^{-4} Scale Determination, avn - allgemeine vermessungs-nachrichten, 125, 140–150, 2018.
- Torge, W.: Gravimetry, Walter de Gruyter, Berlin, New York, 1989.
- ~~Front, D.: Hiking on the Karst Trail through the Southern Harz gypsum karst landscape: enjoying and preserving a singular landscape, <https://www.karstwanderweg.de/english.htm> (last access: 2 September 2018), 2018.~~
- 30 ~~<https://www.karstwanderweg.de/english.htm> (last access: 2 September 2018), 2018.~~
- TrukSoft: Nigra - Special Software for Levellings, <http://www.nivellement.de/files/Nigra%20Manual.pdf>, 2018.
- Tuckwell, G., Grossey, T., Owen, S., and Stearns, P.: The use of microgravity to detect small distributed voids and low-density ground, Q. J. Engin. Geol. Hydrogeol., 41, 371–380, <https://doi.org/10.1144/1470-9236/07-224>, 2008.
- Van Camp, M., Meus, P., Quinif, Y., Kaufmann, O., van Ruymbeke, M., Vandiepenbeeck, M., and Camelbeek, T.: Karst aquifer investigation using absolute gravity, Eos, Trans. AGU, 87, 298, <https://doi.org/10.1029/2006EO300005>, 2006.
- 35 <https://doi.org/10.1029/2006EO300005>, 2006.
- Wadas, S. H., Polom, U., and Krawczyk, C. M.: High-resolution shear-wave seismic reflection as a tool to image near-surface subsurface structures - a case study in Bad Frankenhausen, Germany, Solid Earth, 7, 1491–1508, <https://doi.org/10.5194/se-7-1491-2016>, 2016.

- Wadas, S. H., Tanner, D. C., Polom, U., and Krawczyk, C. M.: Structural analysis of S-wave seismics around an urban sinkhole: evidence of enhanced dissolution in a strike-slip fault zone, *Nat. Haz. Ea. Sys. Sci.*, 17, 2335–2350, <https://doi.org/10.5194/nhess-17-2335-2017>, 2017.
- Waltham, A. C. and Fookes, P. G.: Engineering classification of karst ground conditions, *Q. J. Engin. Geol. Hydrogeol.*, 36, 101–118, <https://doi.org/10.1144/1470-9236/2002-33>, 2003.
- Waltham, T.: Control the drainage: the gospel accorded to sinkholes, *Q. J. Engin. Geol. Hydrogeol.*, 49, 5–20, <https://doi.org/10.1144/qjegh2015-088>, 2016.
- Waltham, T., Bell, F. G., and Culshaw, M. G.: Sinkholes and Subsidence: Karst and Cavernous Rocks in Engineering and Construction, Springer, Berlin, Heidelberg, <https://doi.org/10.1007/b138363>, 2005.
- 10 Weise, A., Kersten, T., Timmen, L., Gabriel, G., Schön, S., and Vogel, D.: Ein integrativer geodätisch-gravimetrischer Ansatz zur Erkundung von Subrosion im Erdfallgebiet Hamburg-Flottbek - Oberflächendeformation und Massentransfer, *avn - allgemeine vermessungsnachrichten*, 125, 244–254, 2018.
- Wenzel, H. G.: Schwerenetze, in: *Geodätische Netze in Landes- und Ingenieurvermessung II : Vorträge des Kontaktstudiums Februar 1985 in Hannover*, Vermessungswesen bei Konrad Wittwer, edited by Pelzer, H., vol. 13, p. 475 ff., 1985.
- 15 Wenzel, H. G.: Program package GRAVNA-Adjustment of gravity observations, Fortran-program, Geodetic Institute, University Karlsruhe (unpublished), 1993.
- Wilkinson, M., Mouli-Castillo, J., Morgan, P., and Eid, R.: Time-lapse gravity surveying as a monitoring tool for CO2 storage, *Int. J. Greenh. Gas Con.*, 60, 93–99, <https://doi.org/10.1016/j.ijggc.2017.03.006>, 2017.
- Williams, P.: *Encyclopedia of Caves and Karst Science*, chap. Dolines, pp. 628–641, Fitzroy Dearborn, NYC, US, 2004.
- 20 Wolf, H.: *Ausgleichsrechnung. Formeln zur praktischen Anwendung.*, Ferdinand Dümmlers Verlag, Bonn, 1975.
- Yechieli, Y., Abelson, M., Wachs, D., Shtivelman, V., Crouvi, O., and Baer, G.: Formation of Sinkholes along the Shore of the Dead Sea - Preliminary Investigation, in: *Ninth Multidisciplinary Conference on Sinkholes and the Engineering and Environmental Impacts of Karst. Geotechnical Special Publication.*, pp. 184–194, [https://doi.org/10.1061/40698\(2003\)16](https://doi.org/10.1061/40698(2003)16), 2003.
- Zini, L., Calligaris, C., Forte, E., Petronio, L., Zavagno, E., Boccali, C., and Cucchi, F.: A multidisciplinary approach in sinkhole analysis: The Quinis village case study (NE-Italy), *Eng. Geol.*, 197, 132–144, <https://doi.org/10.1016/j.enggeo.2015.07.004>, 2015.
- 25