

Ca-rich garnets and associated symplectites in mafic peraluminous granulites from the Gföhl Nappe System, Austria

Konstantin Petrakakis¹, Nathalie Schuster-Bourgin², Gerlinde Habler², and Rainer Abart²

¹University of Vienna, Department of Geodynamics and Sedimentology

²University of Vienna, Department of Lithospheric Research

Correspondence: Konstantin Petrakakis (konstantin.petrakakis@univie.ac.at)

Abstract. Mafic peraluminous granulites associated with the mantle-derived peridotites of the Dunkelsteiner Wald provide evidence of the tectono-metamorphic evolution of the Gföhl Nappe System, Austria. They contain the primary assemblage garnet + Al-rich-clinopyroxene + kyanite. Large Ca- and Mg-rich garnets are embedded in a granoblastic matrix of Al-rich-clinopyroxene, Ca-rich-plagioclase and minor hornblende. They have been partially replaced by different generations of symplectites: (a) corundum + sapphirine + spinel + plagioclase formed around kyanite inclusions, (b) orthopyroxene + spinel + plagioclase ± hornblende formed at their rims and (c) clinopyroxene + orthopyroxene + spinel + plagioclase ± hornblende formed within cracks.

The garnet shows a complex compositional structure comprising several repeatedly occurring garnet types, which are characterized by specific compositions. The areal extent and the cross-cutting relations observed in element distribution maps allowed for the derivation of the relative timing of the formation of the different garnet types. The compositional features of the garnets indicate post-formational modification by intracrystalline diffusion and metasomatic agents.

The garnet composition isopleths in equilibrium assemblage diagrams are in line with composition modification as indicated by the element distribution maps. They confirm the deviation of composition from equilibrium for all garnet types. Furthermore, the latest garnet types show evidence of metasomatic (Fe+Mg)-loss affecting their Ca-content. *PT*-estimates are based on equilibrium assemblage diagrams that reproduce satisfactorily the observed mineral assemblages and measured mineral compositions. Criteria for checking the existence of preserved equilibrium compositions are suggested. The results call in question the invariability of the assumption that the Ca-content and/or zoning in garnet preserves primary *PT*-information from garnet growth in every case.

Recrystallization and compositional readjustment of the reactive garnet volume during symplectite formation has led to the development of pronounced, secondary diffusion-induced zoning profiles overprinting the different garnet types and post-dating the complex garnet compositional structure. The primary assemblage is stable between 760 and 880° C and pressures >11 kbar. The bulk composition of the crack- symplectites is almost isochemical to the oldest, breaking-down garnet type. These symplectites have been formed above 730° C and pressures between 7.5 and 5 kbar. The studied rocks have undergone a more or less isothermal decompression from pressures above 11 kbar to 6 kbar at temperatures of about 800° C. Crack- and rim-symplectites have been formed after decompression during the early stage of approximately isobaric cooling under conditions of low differential stress. Due to limited availability of fluids promoting symplectite formation, the time-scale of symplectite

formation calculated from secondary diffusion profiles associated with crack- symplectites is shown to be geologically very short (< 0.5 ka).

1 Introduction

Reconstruction of the *PT*-conditions attained by metamorphic rocks during their evolution provides key information for the assessment of geodynamics of orogenic belts. Reconstructions of the *PT*-history of metamorphic rocks are based on the thermodynamic analysis of equilibrium phase relations. Thereby, preservation of equilibrium is often difficult to assess and often is tacitly assumed rather than rigorously tested. Especially in rocks metamorphosed under granulite facies conditions, the equilibrium phase relations attained at peak metamorphic conditions may be modified in the course of slow cooling, or due to recrystallization, repeated deformation and retrogression.

Due to its refractory nature, garnet is considered as one of the most reliable mineral in preserving its original composition. Based on its low inter-diffusion coefficient, Ca in garnet is supposed to be particularly robust and hardly affected by late recrystallization and retrogression. With this study, we challenge this proposition by analyzing granulite-facies rocks from the eastern-most part of the Moldanubian Zone of the Variscan Orogen exposed in the Czech Republic and in Austria (cf. Fig. 1).

Over about the last three decades, the assessment of the *PT*- evolution of granulites and associated rocks within the Moldanubian high-grade Gföhl Nappe System has been addressed by several tens of papers. The high number alone points to a poor agreement of the estimated *PT*-conditions and *PT*-path interpretations. Table 1 is a representative selection of the most recent *PT*-estimates complemented with obvious geodynamic implications resulting therefrom.

The *PT*-estimates in Table 1 are based on three approaches. The first approach used conventional continuous-reaction thermo-barometry involving integral ternary feldspar compositions from perthite and antiperthite, Na-bearing clinopyroxene and the Ca-content in garnet (O'Brien, 2008; Vrána et al., 2013, and references therein). The calculated *PT*- conditions are about 1000° C and 15–20, occasionally more, kbar. The second approach claims additionally the derivation of the prograde path of the rocks with the aid of equilibrium assemblage diagrams (pseudosections) mostly combined with results of conventional geothermobarometry relying again on garnet Ca-content (Štípská and Powell, 2005a; Racek et al., 2008; Štípská et al., 2014a; Jedlička et al., 2015, 2017). This approach implies the most complex geodynamic evolution of the rocks (cf. Table 1). The third approach aims similarly at the derivation of *PT*-conditions, but points also to anatectic and open- system processes that have affected rocks and minerals under the specific “Moldanubian” conditions (Hasalová et al., 2008b; Štípská et al., 2014a).

The most probable reason for the observed divergence of *PT*- estimates is that in such rocks partial or complete re-adjustment of rock microstructures, mineral abundances and compositions during their multi-stage tectono-metamorphic evolution may hinder the calculation of consistent *PT*- estimates. Critical discussions about the deviation of minerals from equilibrium composition are, indeed, found in most of the papers given in Table 1. The discussions deal with (i) the diffusion-aided Na-loss in clinopyroxene during the granulite facies overprint, (ii) the effects of decompression and rock recrystallization, and (iii) the available thermodynamic properties of minerals and their validity for thermobarometric calculations. However and irrespective of thermodynamic method used, all *PT*-estimates listed in Table 1 are based explicitly or implicitly on the assumption that

garnets and especially their Ca- contents have been hardly affected by processes other than changes of *PT* and that, therefore, any observed Ca-zoning has preserved past *PT* information.

In this paper, we address Ca-rich garnets (cf. Table 2) and associated symplectites in mafic, garnet-clinopyroxene-kyanite granulites that call into question the invariability of the above assumption. Extensive microprobe analysis and element mapping showed that the garnet composition, in particular the Ca-content, has been modified by intracrystalline diffusion and metasom-
5 atizing agents. Extending the possibilities currently offered by the calculation of equilibrium assemblage diagrams, we present criteria for the evaluation of preserved equilibrium compositions by checking the behavior of phase component isopleths. We emphasize the reliability of *PT*-estimates derived from equilibrium assemblage diagrams in case they reproduce satisfactorily the observed assemblages and mineral compositions. We have resolved the late evolution of the Moldanubian samples at hand
10 with particular reference to garnet behavior. Garnet composition modification has predated a largely isothermal decompression of the rocks that started above 11 kbar at a temperature of c. 800° C. This decompression induced garnet break-down and compositional re-adjustment and recrystallization of reactive garnet volumes associated with the formation of different, locally controlled symplectites within a very short time interval during early, post-decompression, H₂O-undersaturated conditions that were characterized by strain-free, almost isobaric cooling at c. 6 kbar.

15 2 Methods of data acquisition and recalculation

Extensive description of the methods of data acquisition and recalculation (rock and mineral analyses) as well as of symplectite modal analysis, bulk composition calculation of crack symplectites and EBSD of crack symplectites are given in the Supplement. Tables of averaged microprobe analyses of the minerals with standard deviations of the measured oxides are given
ibidem.

20 The type face used throughout the text is the following. SOLID SOLUTION; *phase_component*; Pure_phase. Mineral and component abbreviations are as follows:

CPX = clinopyroxene *di, hd, cTs, jd* [diopside, hedenbergite, Ca-Tschermak's pyroxene, jadeite].

GRT = garnet; *alm, sps, prp, grs* [almandine, spessartite, pyrope, grossularite].

HBL = hornblende; X_{mg} [Mg/(Mg+Fe)].

25 OL = olivine; *fo, fa* [forsterite, fayalite].

OPX = orthopyroxene; *en, fs* [enstatite, ferrosilite].

ILM = ilmenite; X_{mg} [Mg/(Mg+Fe)].

SPL = spinel; *spl, hrc* [spinel, hercynite].

SPR = sapphirine; X_{mg} [Mg/(Mg+Fe)].

30 PL = plagioclase; *an, ab* [anorthite, albite].

Crn = corundum. Ky = kyanite. Ms = white mica. Qtz = quartz. Prh = prehnite. Rt = rutile. Tnt = titanite.

Additional normative components: *hy* = hypersthene; *ol* = olivine.

Table 1. Selection of proposed *PT*-estimates complemented with obvious geodynamic implications from Moldanubian granulites and associated rocks in the Gföhl Nappe System, Moldanubian Unit. References: 1: Štípská and Powell (2005a). 2: Štípská and Powell (2005b). 3: Racek et al. (2006). 4: O'Brien (2008) and references therein. 5: Racek et al. (2008). 6: Faryad et al. (2010). 7: Vrána et al. (2013) and references therein. 8: Štípská et al. (2014a). 9: Jedlička et al. (2015). 10: Jedlička et al. (2017).

P (kbar) T (°C)					Methods	Reference
Initial stage	Implications	Peak	Implications	Post-Peak		
		18 850			EAD	1
magmatic, dry @ 8-10 >1000	→ compression →	< 18 < 850	→ decompression →	8-9 800	EAD	2
		15 800			EAD	3
10 ?		15 ?		7-10 750		3
		15-22 ~1000			GTB	4
magmatic, @ 14 >950	→ compression →	10-17 650-850 or 20 770	→ decompression →	5-7 < 800	EAD	5
		22 900	→ decompression →	16 820 or 10 870	EAD	6
		22-23 ?			GTB	7
eclogite @ 18 900	→ decompression & metasomatism to granulite →	12 950			EAD+open-sys	8
6 400	→ prograde <i>PT</i> →	32-40 ~700	→ decompression & re-heating →	15-20 800-1000	EAD+open-sys	9
8-9 460	→ prograde <i>PT</i> →	24-25 550	→ decompression & re-heating →	16-18 800-870	EAD	10
Methods: EAD = Equilibrium assemblage diagrams (pseudosections); EAD+open-sys = EAD and additional consideration of open-system processes; GTB = conventional one-reaction geothermobarometry.						

3 Geological background

The Moldanubian Unit in Austria forms the eastern-most, belt-like part of the Variscan Orogen with a general NNE-SSW strike. In its western part, it has been intruded by granitic plutons of the South Bohemian Pluton; in the east, it is thrustured over rocks of the Moravo-Silesian Unit (Schulmann et al., 2008, Fig. 1). It is composed of three lithotectonic nappe systems that are generally dipping to the east. The Gföhl Nappe System takes the highest tectonic position with felsic mylonitic granulites occurring at its top. The granulites are intimately underlain by the widespread Gföhl Gneiss and subordinate amphibolites. Garnet-peridotites with associated pyroxenites and eclogites represent tectonically emplaced fragments of the Earth's upper mantle (Medaris et al., 2005; Svojtka et al., 2016, and references therein) within the felsic granulites and rarely Gföhl Gneiss. The Drosendorf Nappe System (lithologically Bunte or Variegated Series) lies below the Gföhl Nappe System. It is composed of amphibolites, marbles, gneisses and quartzites overlying the basal Dobra Gneiss. It is also exposed within the Gföhl Nappe System in the Drosendorf Window. The tectonically lowest Ostrong Nappe System (lithologically Monotonous Series) is in contact with the Southern Bohemian Pluton and is composed of migmatitic, garnet-free Crd-gneiss with subordinate felsic gneiss and rare eclogitic bodies.

The metamorphic grade of the granulites within the Gföhl Nappe System has already been addressed in the previous section. Hasalová et al. (2008a) studied the gneisses and migmatites of the Gföhl Nappe System showing structural transitions from

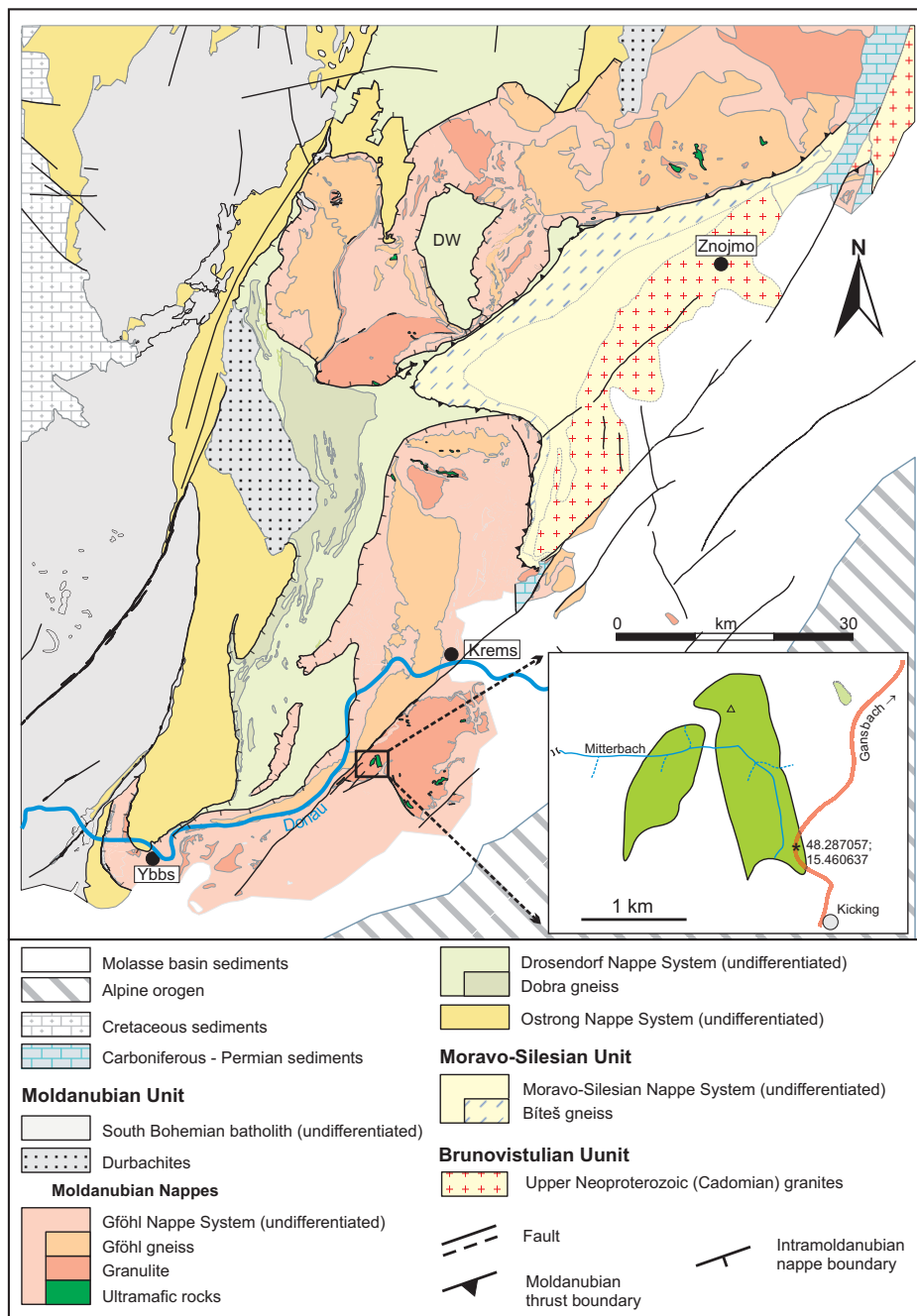


Figure 1. Simplified geological map of the Austrian part of the Moldanubian Unit modified after Schnabel (2002), Krenmayr et al. (2006), Cháb et al. (2007) and Kalvoda et al. (2008). DW signifies the Drosendorf Window. The inset is a sketch of the sampling area of the mafic granulites (embedded within felsic granulites) at the steep flanks of Mitterbachgraben. The land road Gansbach—Kicking as well as the GPS-coordinates at the star are shown (after Sheet 37, “Mautern”, Geological Survey of Austria).

banded orthogneis to stromatic, schlieren and nebulitic migmatites formed by anatectic melt infiltration at conditions between < 850 °C and 7.5 kbar to 690 °C and 4.5 kbar. Anatexis is a widespread phenomenon within the Gföhl Nappe System affecting not only the Gföhl Gneiss, but also the mylonitic felsic granulites and amphibolites. This is most evident in many outcrops along the river Danube (Fig. 1). Anatectic conditions of 700–800 °C at c. 8 kbar and evidence for decompression has been documented also for the Drosendorf Nappe System (Petrakakis, 1997; Racek et al., 2006). The Ostrong Nappe System is similarly anatectic, but differs distinctly in terms of pressure from the other Moldanubian nappe systems (Linner, 1996). Based on rare relics of kyanite and staurolite, the rocks had attained a prograde maximum at temperatures <600 °C and pressures of ~6 kbar. Subsequent anatexis took place at ~720°C and pressures not lesser than 4.5 kbar.

Seven samples of mafic granulites were collected from loose boulders dispersed over the steep flanks of the Mitterbachgraben (inset, Fig. 1). The local bedrock comprises serpentinites pertaining to the mantle-derived peridotite of the Dunkelsteiner Wald. The ultramafic rocks form several 100 m long lensoid bodies embedded in mylonitic felsic granulite. The collected samples are noticeable in the field, as they do not belong to the regionally widespread rock types in this area. They are dark gray, middle- to fine-grained, mostly granofelsic mafic granulites containing abundant pyroxene and kelyphitic reddish-brown garnets of occasionally striking large size up to 1.5 cm.

Previous work on similar rocks from the same area has been presented by Carswell et al. (1989). They interpreted the protoliths of these silica undersaturated, Mg-rich rocks showing high normative plagioclase contents as cumulate-liquid mixes of intra-plate basaltic magmas with lower crust rocks. The observed primary metamorphic assemblage GRT+CPX+Ky should have been formed at 30 kbar and 1146–1102 °C. Rarely observed SPR+PL- symplectites were formed at 1000 °C and $P < 20$ kbar at the expense of Ky+GRT. Finally, hornblende rimming matrix clinopyroxene was formed at amphibolite facies conditions.

XRF-analyses of the samples collected for this study reveal K-poor, Mg-rich compositions with X_{mg} ranging within 0.70–0.82. Analyses of bulk rock composition and calculated normative contents are given in the Supplement. In terms of normative contents, they contain *crn* in the range 10 to 16 %. Three of them contain *an* in the range 9 to 19 %; the other four samples contain instead *ol* between 3 and 9 %. The *di* contents of all samples vary between 48 and 61% and the *hy* content between 3 and 19 %. The *ab* content varies between 9 and 19 %. Some of the samples (UM5, UM6, UM8) resemble the corundum-bearing garnet clinopyroxenites from the Beni Bousera ultramafic massif that have been considered as low pressure crystallization cumulates from plagioclase-rich gabbros of ophiolitic affinity that underwent subduction and re-equilibration at mantle conditions (Kornprobst et al., 1990). Svojtka et al. (2016) assigned the Dunkelsteiner Wald pyroxenites to LREE-enriched melts of the subcontinental lithospheric mantle. In comparison with Al_2O_3 contents of 15–24 wt.-% in the samples presented here, their pyroxenitic samples are characterized by significantly lower Al_2O_3 not exceeding 12.23 wt.-% and higher $X_{mg} = 0.87 - 0.90$. Based on the pronounced peraluminous composition variability, we consider our samples as mantle-derived clinopyroxenitic melts that have assimilated variable amounts of Al-rich crustal material during ascent and tectonic emplacement to their current position.

The collected samples are mineralogically similar containing rather slightly variable amounts of clinopyroxene, plagioclase and garnet accompanied by some hornblende. The following presentation and discussion is focused on sample UM8 that

contains some large garnets with an unusual high number of features. This sample is the most magnesian and peraluminous of the whole collection ($X_{mg} = 0.82$ with normative $crn = 14.07\%$ and $an = 18.78\%$).

4 Rock fabric and mineral assemblages

The most abundant phase in the mafic granulite UM8 is clinopyroxene followed by plagioclase, fewer garnet of occasionally large size and still fewer brownish hornblende (Fig. 2a). The rock matrix is fine-grained with typical crystal sizes ranging from 0.1 to 0.3 mm. Beside clinopyroxene and plagioclase, sporadic relics of garnet associated with orthopyroxene-bearing symplectitic intergrowths occur within the rock matrix (Fig. 2b). Hornblende is common, but a minor phase (cf. Fig. 2c). Fine-grained hornblende and white mica are abundant along the conspicuous darker, thin and straight bands that cross-cut the rock matrix (Fig. 2a).

Under the light polarizing microscope, the matrix is granoblastic, almost equigranular, comprising smooth to straight interfaces among clinopyroxene, plagioclase and hornblende that meet at triple junctions (Fig. 2c). The large, up to 1.3 cm sized garnets (Fig. 2a) are partially kelyphitized and contain kyanite and clinopyroxene inclusions (Fig. 2d). Plagioclase is often observed with clinopyroxene in the inclusion domains of garnet. Kyanite inclusions have been partially to completely replaced by symplectites of plagioclase and tiny, highly refractive minerals (Fig. 2d). Granular green spinel may be occasionally recognized among them. In addition, these garnets exhibit 0.1–0.2 mm wide mode-I (extensional) cracks, which are filled with fine-grained symplectite (Fig. 2e). Most garnets are however much smaller with sizes less than 4 mm (Fig. 2f). Such garnets are kelyphitized too, but kyanite inclusions are seldom. They typically contain only clinopyroxene and plagioclase in their inclusion domains.

The garnets of the rock have been partially replaced by different symplectites. Based on their formation environment, three types of symplectites can be discerned:

Symplectites around kyanite inclusions in garnet (Fig. 3). The primary assemblage GRT+Ky broke-down forming initially a coarse-grained symplectite of SPL+PL+Crn (Fig. 3a,b). Corundum intergrown with spinel is then overgrown and replaced partially by sapphirine (Fig. 3c). Finally, the initial SPL+PL+Crn- symplectite has been partially replaced by a fine-grained SPR+PL- symplectite. Noticeably and as shown in Fig. 3d and Fig. 3e, the break-down products corundum and sapphirine are intergrown with the retreating garnet edge. GRT+Ky break-down has led elsewhere to the complete consumption of kyanite (Fig. 3f). The contrast-enhanced enlargement in Fig. 3g shows that also sapphirine has been overgrown by spinel belonging to an extremely fine-grained OPX+SPL- symplectite. This symplectite presumably replaced partially the coarse-grained SPR+PL- symplectite. The whole symplectitic structure is enclosed in a plagioclase corona, which shows straight contacts with the breaking-down garnet. All these features suggest that the current picture of the inclusion-related symplectites evolved during a multi-stage transformation process, whereby the initially formed corundum and the descendant sapphirine became successively metastable. This type of symplectite is henceforth referred to as *inclusion-related symplectite*.

Symplectites at garnet rims (Fig. 4a, Fig. 4b). This kind of symplectite comprises the observed kelyphites formed by reaction between the garnet rim and the rock matrix. It shows best the typical features of a symplectite microstructure. It consists of

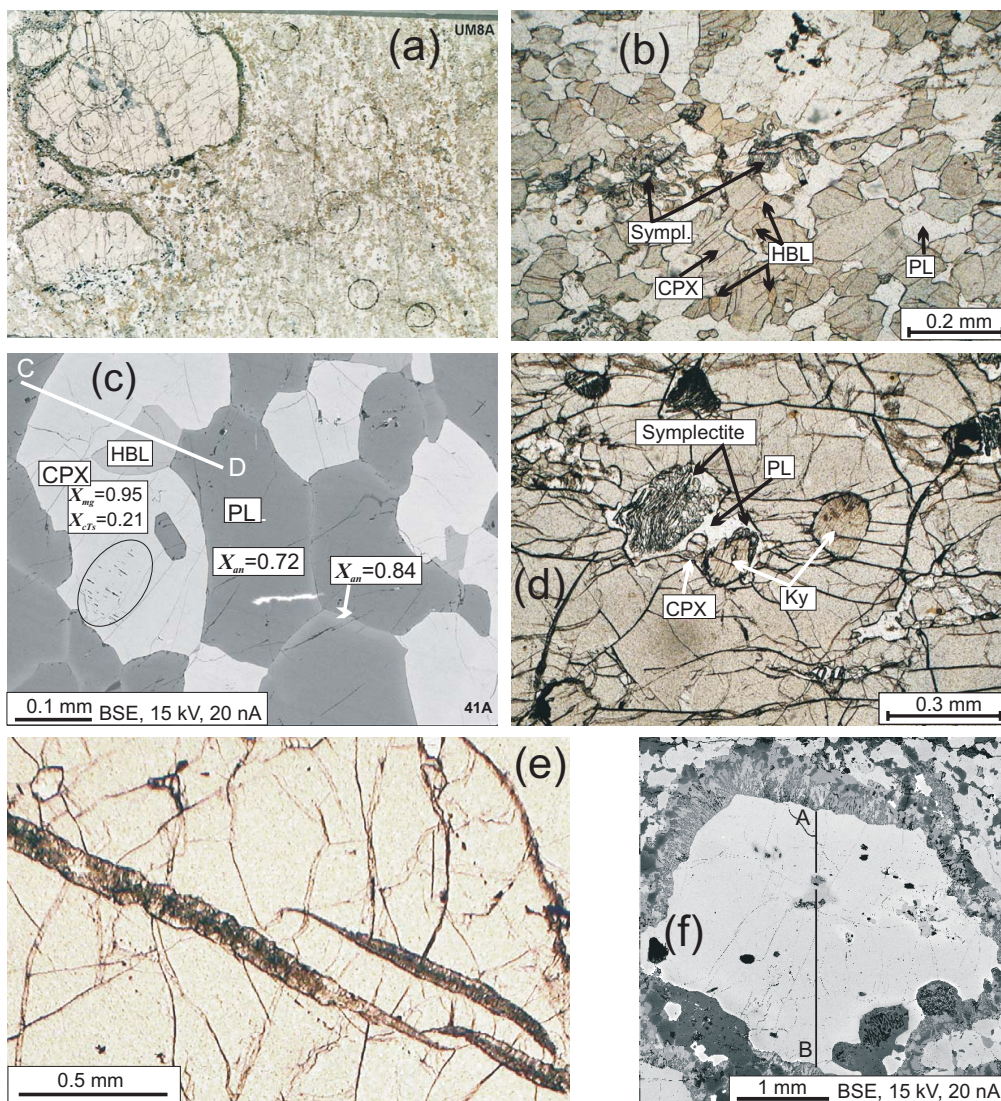


Figure 2. Rock and mineral features in sample UM8. Figures (a), (b), (d) and (e) are taken with a polarizing microscope. (a) Thin section showing one of the largest, partially kelyphitized garnets ($\varnothing \sim 1.3$ cm). The abundant gray crystals in the matrix are clinopyroxene with scarce garnet relics; white crystals are feldspar and the light brownish ones hornblende. The thin straight darker bands cross-cutting the rock matrix are rich in hornblende and white mica. The black cycles are orientation marks for microprobe analysis. (b) Granoblastic rock matrix showing clinopyroxene and plagioclase crystals with subordinate, small brownish crystals of hornblende. The small, irregular, highly refractive constituents (designated as Sympl.) are relics of garnet and symplectitic intergrowths containing orthopyroxene. (c) BSE image of the rock matrix showing smooth interfaces and triple junctions among clinopyroxene, plagioclase and hornblende as well as thin exsolution lamellas in the clinopyroxene interior designated with an ellipse. The plagioclase rims are enriched with Ca. The profile C-D is shown in Fig. 7b. (d) Kyanite and clinopyroxene inclusions in garnet partially or totally replaced by symplectite of plagioclase and highly refractive minerals. (e) 0.1—0.2 mm wide, mode-I cracks in garnet filled with fine-grained symplectite. (f) BSE image of a middle-sized garnet showing an inclusion-related symplectite within the resorption garnet embayment and a kelyphite at rims.

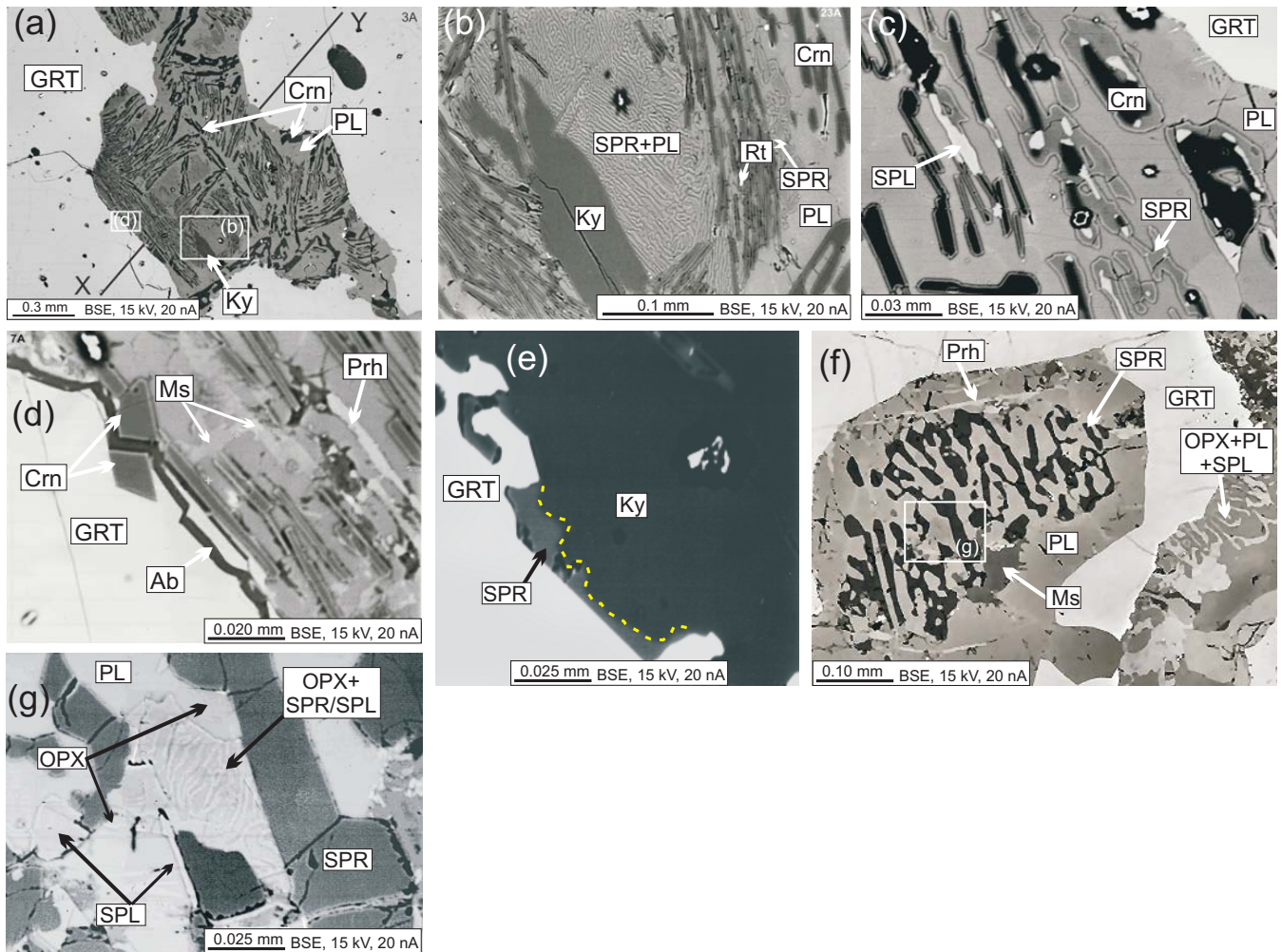


Figure 3. BSE images of inclusion- related symplectites. (a) Relict kyanite inclusion in garnet surrounded by Crn (black) + PL (middle gray)- symplectite. The line X-Y refers to the profile in Fig. 5c and Fig. 6. The rectangles designated with (b) and (d) are referring to the figures (b) and (d), respectively. (b) Crn+PL- symplectite seemingly enclosing an extremely fine-grained SPR+PL- symplectite. (c) In fact, sapphirine has overgrown and consumed corundum that is intergrown with spinel. (d) Corundum intergrown with the reactive garnet edge. Note the late hydration products (white mica and prehnite) as well as a late crack filled with albite. (e) Sapphirine has overgrown the resorbing kyanite and is intergrown with the reactive garnet edge. The yellow dashed line emphasizes the resorption embayment of kyanite. (f) SPR+PL- symplectite in garnet (cf. Fig. 2f). A plagioclase corona isolates the symplectite from garnet. Note that here kyanite is completely consumed. On the lower right part of this figure a typical garnet-rim- symplectite (cf. Fig. 4a) is shown. The rectangle designated with (g) refers to figure (g). (g) An extremely fine-grained symplectite of OPX+SPR/SPL in the central part of the figure is seemingly enclosed in the coarse-grained SPR+PL- symplectite. Note however, that spinel has overgrown sapphirine.

intergrowths of vermicular crystals replacing the garnet along a sharp garnet–symplectite reaction front. The older parts of the symplectite are distant to the garnet and comprise coarser-grained, rather granoblastic [OPX+SPL]- domains (Obata, 2011). Towards the garnet, the symplectitic phases become younger, reducing their intergranular spacing (and size), and evolving to an intergrowth of fibrous crystals of OPX+PL increasingly aligned perpendicular to the garnet–symplectite interface (Obata, 2011, „Law of normality”; Fig. 4a). Hornblende is often observed within this kind of symplectites. It is either intergrown with plagioclase touching the reaction front and being a late symplectitic phase (Fig. 4b), or forms coarse-grained granular crystals distant to the reaction front (Fig. 4a). As shown in both figures, the outermost margins of the adjacent matrix plagioclase crystals are enriched in Ca. This type of symplectite is henceforth referred to as *rim-symplectite*.

Symplectites within Mode-I (extensional) garnet cracks (Fig. 2e, Fig. 4c, Fig. 4d). This type of symplectite shows a symmetrical shape and size distribution of the phases on either side of the crack middle-line. Along the middle-line, coarser-grained orthopyroxene- and clinopyroxene-domains are intergrown with tiny vermicular spinel. Towards both garnet–symplectite interfaces, they evolved to fine-grained intergrowths of fibrous OPX+PL±CPX crystals oriented perpendicular to the reaction front. Thereby, inter-granular spacing (and size) of the symplectitic phases decreases. Some few hornblendes are often present and follow the modes of occurrence described in rim- symplectites. This type of symplectite is referred to below as *crack-symplectite*.

All three types of symplectites have been observed at one large garnet within one thin section. Rim- and crack- symplectites are mineralogically similar, bearing the assemblage [OPX ± CPX+SPL]+PL. Clinopyroxene occurs however only in crack-symplectites. Inherent to the formation of all three types of symplectite are the secondary compositional changes within some tens of μm across the retreating garnet edge. This is addressed in the next section.

5 Mineral chemistry

The mineral compositions (microprobe analyses) addressed below are given in the Supplement.

Beside the different types of symplectites, the largest garnets show systematic composition patterns. Fig. 5a shows the element distribution profile Z1-Z2-Z3 across the garnet in Fig. 6. The Mn content in the garnets is generally very low. Mg, Ca and Fe vary along the profile, but Fe shows the lowest variation. Along the profile, distinct element distribution patterns occur that may be observed repeatedly in all other garnets of the rock (e.g. Fig. 5b,c,d,e). These patterns, addressed in the following as GRT-types Z1, Z2, C, Z3, are discerned on the basis of distinctly differing relations among X_{alm} , X_{prp} and X_{grs} (Table 2). GRT-types Z1 and C share the same component relation characterized by $X_{grs} < X_{alm} < X_{prp}$. GRT-type Z2 is characterized by lowest X_{prp} and $X_{alm} \approx X_{grs}$. GRT-type Z3 shows the highest observed X_{grs} and $X_{alm} < X_{grs}$. The specific averaged values (X_{alm} ; X_{prp} ; X_{grs}) of these GRT-types are placed within yellowish boxes in Fig. 5a. Where appropriate, these boxes are included for reference in all other garnet profiles discussed below.

With the aid of the GRT-types defined as in Fig. 5a, the Ca-distribution map in Fig. 6 allows for mapping of their areal extend. The dashed line in Fig. 6 delineates the distribution of GRT-type C. The dotted line delineates the distribution of GRT-type Z1.

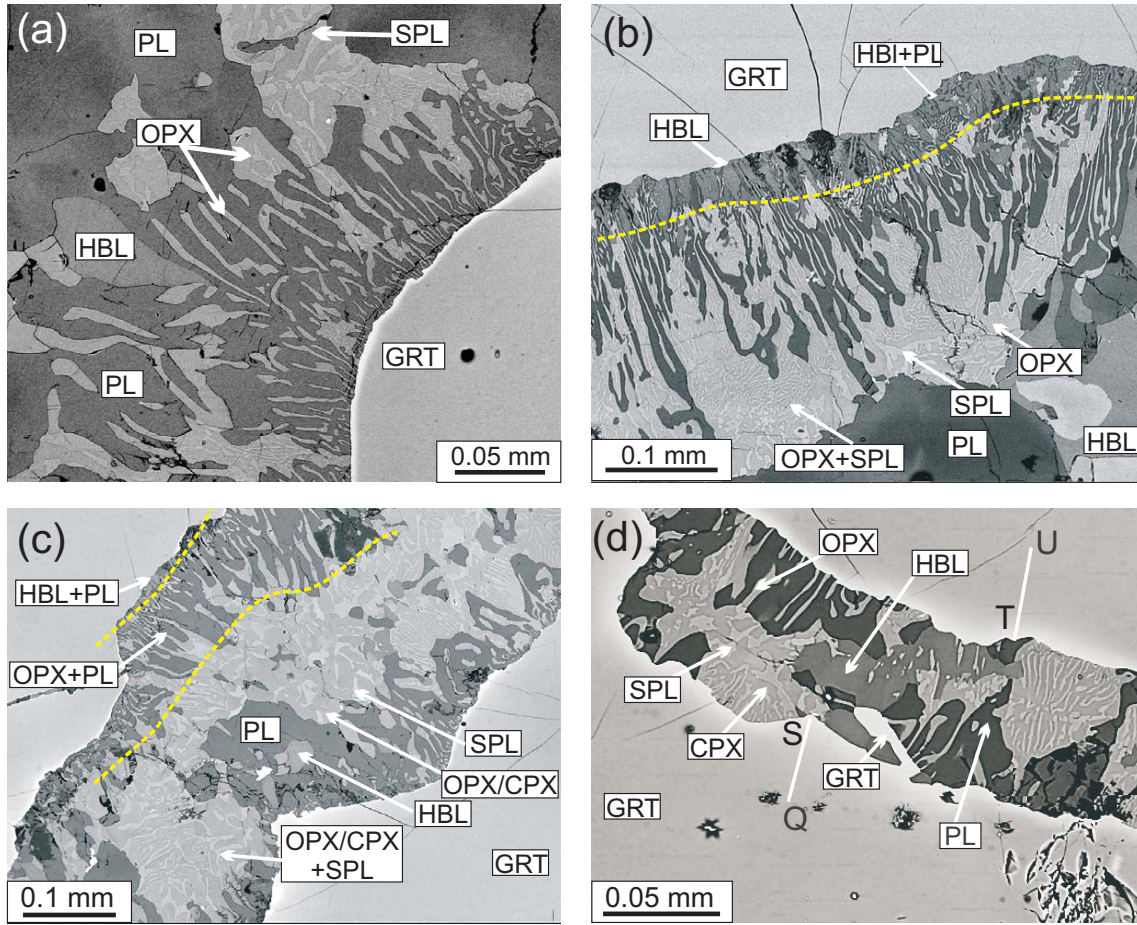


Figure 4. BSE images of rim- and crack- symplectites. Note in all figures the reduction of spacing (and size) of the symplectitic phases from the rock matrix [figures (a) and (b)] or the garnet crack middle-line [figures (c) and (d)] towards the garnet–symplectite interfaces. Note also the light-colored narrow zones at the retreating garnet edges denoting the overprinted secondary diffusion profiles (see text) associated with the symplectite formation. **(a)** OPX+SPL+PL- symplectite forming the kelyphites at garnet rims. At the left upper part of the figure, the matrix plagioclase crystals show a zonal pattern resulting from Ca-enrichment of their margins. **(b)** Composite garnet kelyphite showing a OPX+SPL+PL-symplectite adjacent to rock matrix evolving to a HBL+PL- symplectite touching the garnet–symplectite interface. The approximate boundary between the two symplectites is emphasized by a yellow dashed line. In the lower central part of the figure, the outer-most rims of coarse-grained matrix plagioclase show light-colored margins due to Ca-enrichment. **(c)** Symplectite within a mode-I (extensional) garnet crack showing a symmetric arrangement of the symplectitic phases about the middle-line of the crack. The dashed yellow lines emphasize this zonal structure. At the upper left garnet edge, an OPX+PL- symplectite has evolved to a HBL+PL- symplectite over very narrow zone. **(d)** CPX+OPX+SPL+PL- symplectite within a garnet crack. A clinopyroxene-domain intergrown with tiny vermicular spinel strictly oriented perpendicular to the garnet–symplectite interface as well as a plagioclase domain intergrown with vermicular orthopyroxene take up the largest area of the symplectite. Note also the remnant garnet within the kelyphite as well as the hornblende, which shows a different mode of occurrence resulting most likely by late replacement of orthopyroxene. The garnet profiles along the lines Q-S and T-U is shown in Fig. 5e.

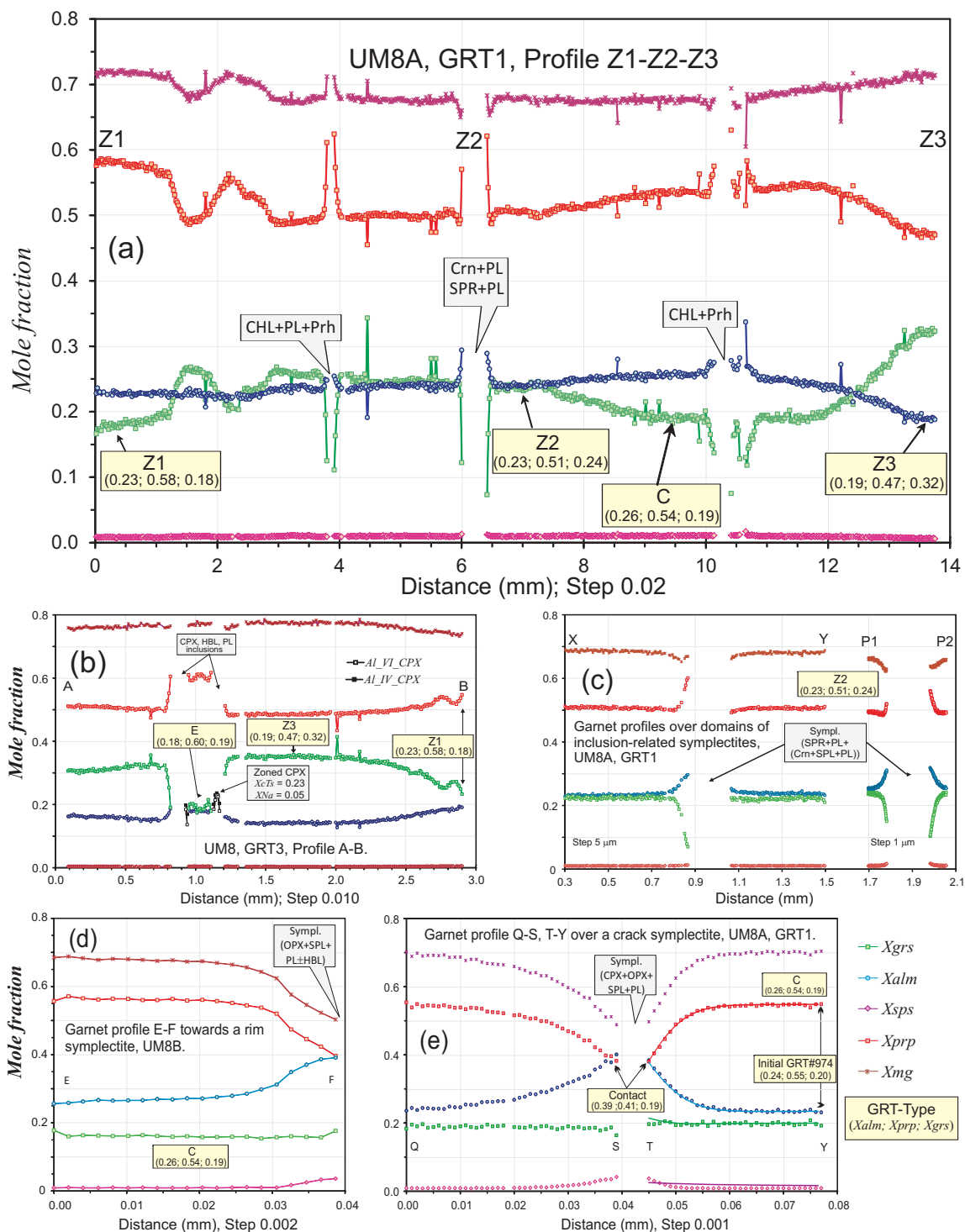


Figure 5. Caption in the next page.

Table 2. Composition and features of garnet types. m (n) and $\pm s$ are the average and standard deviation of n consecutive point analyses of uniform composition along the garnet profile Z1-Z2-Z3 in Fig. 5a, see also Supplement, Table S3 and Fig. S2.

GRT-type:	Z1		Z2		C		Z3		E		Z3 - C
	m (50)	$\pm s$	m (36)	$\pm s$	m (32)	$\pm s$	m (21)	$\pm s$	m (18)	$\pm s$	
X_{alm}	0.23	0.00	0.24	0.00	0.26	0.00	0.19	0.00	0.18	0.00	-0.07
X_{prp}	0.58	0.01	0.51	0.00	0.54	0.00	0.47	0.00	0.60	0.01	-0.06
X_{grs}	0.18	0.01	0.24	0.00	0.19	0.00	0.32	0.01	0.19	0.01	0.13
Features overview:	$grs < alm < prp$; Occurrence \neq Type C		Lowest prp ; $alm = grs$		$grs < alm < prp$; Occurrence \neq Type Z1		Highest grs ; $alm < grs < prp$		Highest prp ; $grs = alm$		

The distribution of GRT-type Z3 is easily recognized by the high Ca-content (light gray color in Fig. 6) at the right and lower margin of the garnet. GRT-type Z2 takes up the remaining part of the garnet.

GRT-type C occupies the large, inclusion-poor interior part of the garnet. GRT-type Z1 has evolved at a strongly Ca- depleted area along a garnet crack, which can be recognized in Fig. 2a and Fig. 6. Therefrom, it “intrudes” irregularly the garnet interior and extends over a narrow zone along the lowest rim of the garnet. As can be recognized in Fig. 6, GRT-type Z1 cross-cuts GRT-type Z3 over a narrow transitional zone and is therefore younger. This age relation is supported also by the typical middle-sized garnet in Fig. 5b. This garnet is of type Z3, but has evolved to GRT-type Z1 towards its margin. Compared with the other GRT-types shown in Fig. 6, GRT-type Z1 is a late feature related most probably with the action of metasomatizing agents. GRT-types Z2 and C are seemingly older, but their temporal interrelation is not clear. Their transition towards GRT-type Z3 is smooth. Despite their similar component relation described earlier ($X_{grs} < X_{alm} < X_{prp}$), we discriminate GRT-type C from GRT-type Z1 based on their strikingly different modes of occurrence described above. Based on these observations, the relative age relations of the garnet types may be summarized as follows: $Z1 < Z3 < Z2 \leq C$. It is noteworthy that the garnet is replaced by kelpite along its rim (cf. Fig. 6) and, as shown by the dotted line at the lowest garnet rim, only the younger GRT-type Z1 may be formed as late as the rim- symplectite.

Figure 5. Composition of garnet. (a) Profile Z1-Z2-Z3 in the large garnet of Fig. 6g. The specific compositional patterns occurring along this profile are standardized to GRT-types designated by yellow boxes (see text and Fig. 2). These GRT-types are repeatedly observed in other garnets of the sample, see the following figures. The yellow boxes are given there for reference. (b) Profile across the middle-sized garnet of GRT-type Z3 shown in Fig. 2e. The GRT-type E occurs adjacent to clinopyroxene inclusions. Note the pronounced zoning in Al shown by the clinopyroxene inclusion. (c) The diffusion profiles X-Y and P1-P2 may be located in Fig. 6g. They overprint GRT-type C across complex, inclusion-related symplectites, see text and Fig. 3. (d) Profile of a garnet of type C towards a rim- symplectite. Contrary to Ca that remains unaffected, the diffusion curves of the other elements show an inversion point at $\sim 8 \mu m$ ahead the garnet edge. (e) The shown two profiles can be located in Fig. 6g. The curves are model diffusion profiles fitted at the analysis points by treating alm , prp , grs as independent components. Analyses of garnet in contact with the symplectite (contact garnet) and the seemingly unaffected garnet apart of the diffusion profile (initial garnet) are given in the Supplement, Table S2.

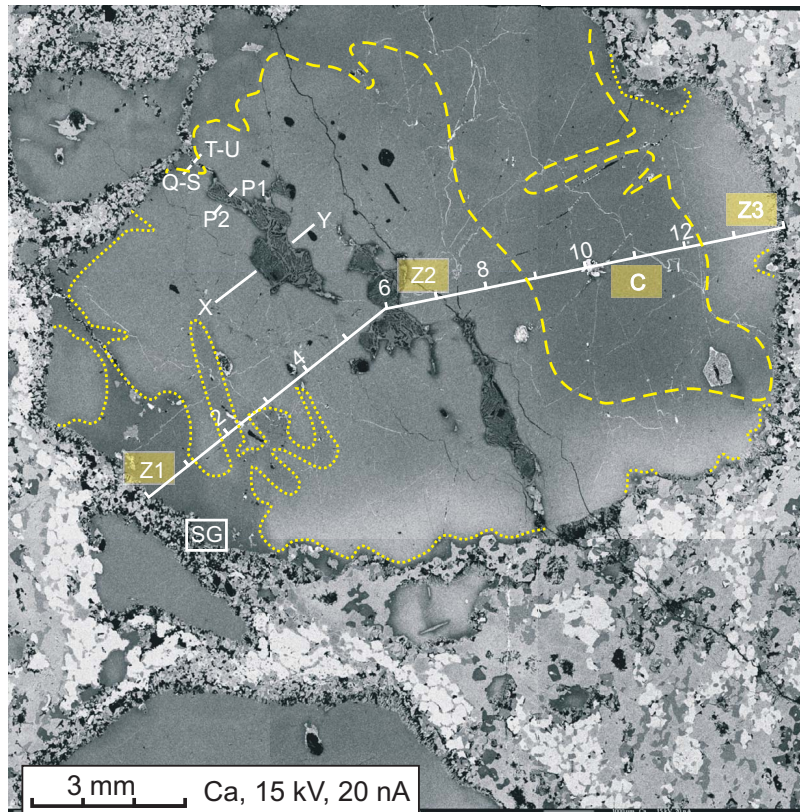


Figure 6. Ca- distribution map in garnet. This Ca- distribution map belongs to the large garnet in Fig. 2a. The lines Z1-Z2-Z3, X-Y, P1-P2, Q-S, T-U and the areas designated with yellowish boxes refer to the profiles and GRT-types (see text), respectively, shown in Fig. 5. The dashed line delimits the distribution of GRT-type C; the dotted line the distribution of GRT-type Z1. GRT-type Z3 (highest Ca content) is restricted along the lower and right margin of the garnet. Rectangle named SG shows the area, where garnet subgrains as those in Fig. 8 occur.

The garnet profiles in Fig. 5 show pronounced compositional zoning profiles that have evolved within some tens of micrometers along the garnet interface with the symplectites. Such compositional zoning profiles within the reactive and retreating garnet edge are imposed over pre-existing garnet compositional patterns and are, therefore, secondary. As will be discussed later, their evolution is linked to the formation of the symplectites. Henceforth, such pronounced compositional profiles will be referred to as *diffusion profiles*.

A close inspection of Fig. 5 reveals that the diffusion profiles overprint the GRT-types Z2, C and Z3. Therefore, the associated symplectites are younger than the overprinted GRT-types. For example, the strong Ca-depletion at 6 mm adjacent to an inclusion-related symplectite (Fig. 5a) is imposed over GRT-type Z2. The same kind of depletion at 10.5 mm is imposed over GRT-type C. In Fig. 5b, this depletion is overprinted over GRT-type Z3. Such relations can be verified also in Figs. 5c,d and e. As such overprinting relations have not been observed in case of the younger GRT-type Z1, we conclude that symplectite

formation is at earliest coeval to this garnet type and consequently younger than the internal compositional structure of the garnet related to GRT-types Z2, Z3 and C.

The garnet profiles shown in Fig. 5c and Fig. 5e are acquired over domains of inclusion-related and crack-symplectites, respectively. Fig. 5c shows a diffusion profile within about 10 μm towards the garnet–symplectite interface characterized by increasing X_{prp} and X_{alm} , and sharply decreasing X_{grs} . In Fig. 5e, the diffusion profile is characterized by unchanged X_{grs} , increasing X_{alm} and decreasing X_{prp} . This striking difference reflects primarily the influence of the local environment on their formation mechanism. In case of Fig. 5c, the environment is defined by GRT-type Z2 reacting with its kyanite inclusions. In case of Fig. 5e, it is defined solely by the instability of GRT-type C. Diffusion profiles at garnet-rim symplectites are similar to those at crack-symplectites. Occasionally, and as shown in Fig. 5d, the diffusion curves for Mg, Fe, Mn adjacent to rim symplectites show an inflection point at some short distance before the retreating garnet edge.

Pronounced diffusion profiles in garnet are also observed towards clinopyroxene inclusion domains. As shown in Fig. 5b, the middle-sized garnet of GRT-type Z3 contains also GRT-type E in the vicinity of clinopyroxene inclusions. This type is characterized by the highest observed X_{prp} . Remarkably, one of the clinopyroxene inclusions crossed by the profile in Fig. 5b shows a sharp zonal pattern with highest Al-content in its core. Even for this seemingly "protected" inclusion, X_{Na} remained negligibly low. This clinopyroxene zoning is rather the exception. As shown in Fig. 7a, in contrast to the adjacent reactive garnet edges preserving diffusion profiles, clinopyroxene inclusions show a uniform element distributions ($X_{cTs} \sim 0.20$; $X_{Na} \sim 0.07$). In fact, the composition of clinopyroxene inclusions does not differ significantly from the composition of the clinopyroxene crystals in the rock matrix (Supplement, Table S3).

Figure 7b shows a profile across matrix crystals of plagioclase, clinopyroxene and hornblende. The element distribution within hornblende and clinopyroxene are perfectly uniform. This is interpreted as evidence of homogenization by intra crystalline diffusion. The matrix clinopyroxene shows a similar composition as the inclusion discussed above. Only its outer-most rim shows less Al ($X_{cTs} \sim 0.13$, $X_{Na} \sim 0.05$). This change correlates with the Ca-enrichment of the outer-most plagioclase rims (cf. Fig. 2c). As shown in Fig. 2c, the interiors of some larger matrix clinopyroxene crystals contain very thin, analytically unresolved exsolution lamellae. Notably, the average of 120 point analyses carried out with defocused beam in scanning mode over such an area of size $49 \times 49 \mu\text{m}^2$ does not differ significantly from the interior analysis of clinopyroxene.

Plagioclase in inclusion domains in garnet contain more Al ($X_{an} \sim 0.88$) than the matrix crystals. The latter show interiors with uniform composition of $X_{an} \sim 0.72$ and outer-most rims of $X_{an} \sim 0.84$ (Fig. 2c; Supplement, Table S4). Plagioclase in inclusion domains of garnet has been often partially or totally replaced pseudomorphically by prehnite. Very late hydration and replacement products composed mostly of fine-grained aggregates of chlorite and sericite occur in almost all inclusion domains in garnet.

6 Additional garnet textures

Some large garnets show grain-internal domains with pronounced contrast on the BSE images in compositionally very homogeneous areas (Fig. 8). Forward scatter electron (FSE) images as well as orientation imaging using EBSD revealed that the

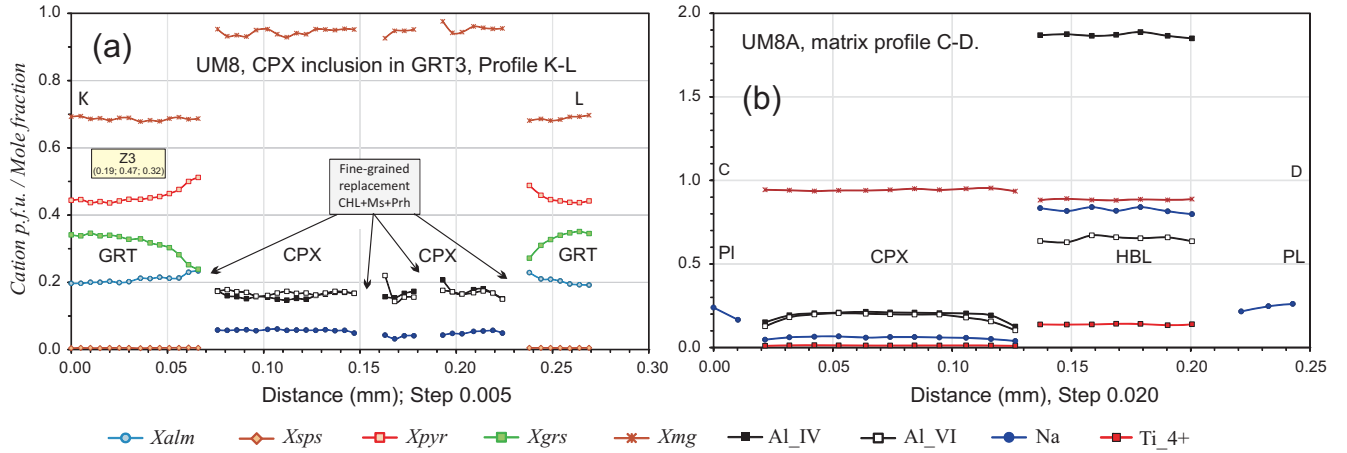


Figure 7. Clinopyroxene composition. (a) Profile K-L across a clinopyroxene inclusion in garnet. Contrary to the homogenized compositional pattern of the clinopyroxene, the adjacent garnet preserves a diffusion profile within $\sim 30 \mu m$ towards the pyroxene. Note also the appreciable Al ($X_{cTs} \sim 0.20$) and very low Na contents of the clinopyroxene. (b) Profile C-D (cf. Fig. 2c) across matrix phases. Clinopyroxene and hornblende are completely homogenized by intracrystalline diffusion. The composition of the clinopyroxene interior is similar with that of the inclusion shown in figure (a). Its outer-most rim shows less Al ($X_{cTs} \sim 0.12$) correlating negatively with the outer-most rim of plagioclase showing $X_{an} \sim 0.85$.

observed contrast is due to the presence of subgrains with up to 12° mutual misorientation. The subgrains are related by rotation around a common axis coinciding with garnet [211]. Similar subgrain formation ascribed to intracrystalline deformation by dislocation glide has already been observed in granulites and upper mantle rocks (Kleinschrodt and McGrew, 2000; Kleinschrodt and Duyster, 2002). In the sample at hand, this deformation-induced feature can be observed only within the youngest

5 GRT-type Z1. Notably, the diffusion profile (light-colored zone) in contact with a rim-symplectite at the right garnet rim (Fig. 8b), has overprinted the subgrain-containing garnet rim. Therefore, formation of the garnet subgrains within GRT-type Z1 pre-dates symplectite formation.

Some other garnets exhibit a peculiar appearance resembling a poikiloblastic microstructure (Fig. 9). We use the designation "poikiloblastic" for these garnets without any genetic co-notation. They contain abundant large, several tens to about two

10 hundred μm sized, rounded to vermicular plagioclase inclusions. Such garnets resemble closely GRT-type Z1 and occur in the outermost 100 to 300 micrometers of large garnets (Fig. 9a) or throughout small, up to about a millimeter sized garnets in the rock matrix (Fig. 9b). As can be recognized in the Fe-distribution map in Fig. 9a, the poikiloblastic garnet is overprinted by the diffusion profile that is associated with the crack- symplectite shown in the upper right part of the image. The poikiloblastic garnet is thus older than the crack- symplectite. The plagioclase inclusions show uniform chemical composition, but differ

15 significantly between the two poikiloblastic garnets shown in Fig. 9.

Garnet profiles acquired over crack-symplectites (e.g. Fig. 5e) show that GRT-type C extends beyond the diffusion-affected part of the garnet. An analysis practically identical with GRT-type C and lying on this profile is #974 (Supplement, Table S3).

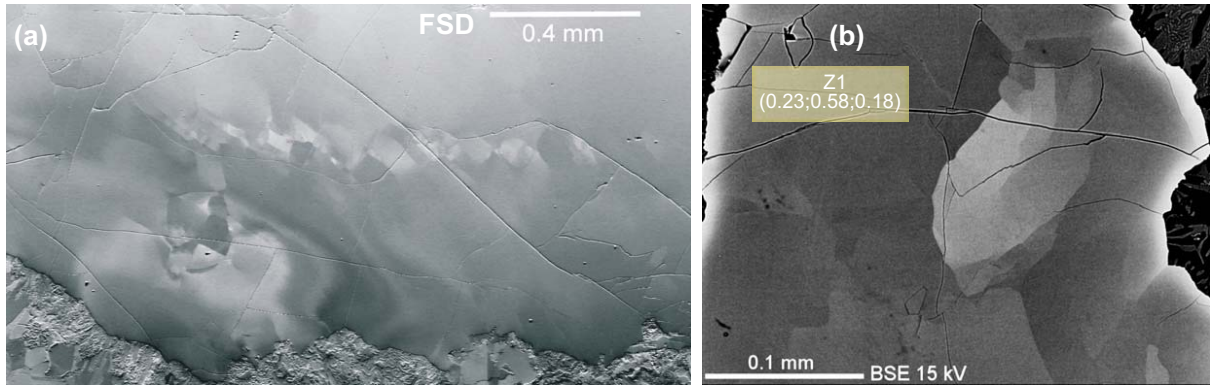


Figure 8. Images of orientation contrast of garnet subgrains within garnet of GRT-type Z1. (a) Garnet subgrains aligned linearly and forming an imbrication microstructure. **(b)** Subgrain development within garnet. The secondary diffusion profile at the right garnet rim (thin light-colored zone) in contact with a rim-symplectite has overprinted the subgrains- containing garnet.

Modal analysis of the phases in crack-symplectites (Fig. 4d, Fig. 5e) combined with their chemical composition obtained by microprobe analysis showed that the bulk symplectite composition is almost isochemical with the GRT-type C. The tools and methods of volumetric measurement of the symplectitic phases as well as the calculation of the bulk symplectite composition are described in the Supplement. The results are summarized in Fig. 10. They confirm that within the maximal uncertainty of lesser than 3 % shown by FeO, the integrated bulk symplectite is isochemical to initial garnet #974. However, some minor input of SiO₂, Na₂O and CaO to the bulk symplectite as well as some loss of Al₂O₃, FeO, MnO, and MgO from garnet should have taken place. Most likely, this mass exchange has been mediated by fluids. Despite these minor uncertainties, we consider the bulk symplectite as isochemical with #974 (or GRT-type C) allowing thus for a straightforward thermodynamic modeling of the symplectite formation within a simple bulk chemical system defined by the composition of this garnet. This is presented next.

7 *PT*- evolution

Despite the large variability of the observed features, two of them serve as starting points for modeling the *PT* evolution of the rock. The first one regards the primary assemblage GRT+CPX+Ky. The composition space for this assemblage is the rock bulk composition. The second one is the crack- symplectite assemblage CPX+OPX+SPL+PL that is almost isochemical to GRT-type C. These assemblages fix two different stability fields that constrain the *PT* path. Although hornblende is occasionally present in small amounts in the inclusion domains of garnet and within some symplectites, we consider its formation as late due to extensive recrystallization and partial re-hydration of the rock matrix that has been set up during or after the latest stage of symplectite formation. This is discussed in detail in a following section. Therefore, the two assemblages above are considered free of primary hydrated minerals and independent of a_{H_2O} at the time of their formation.

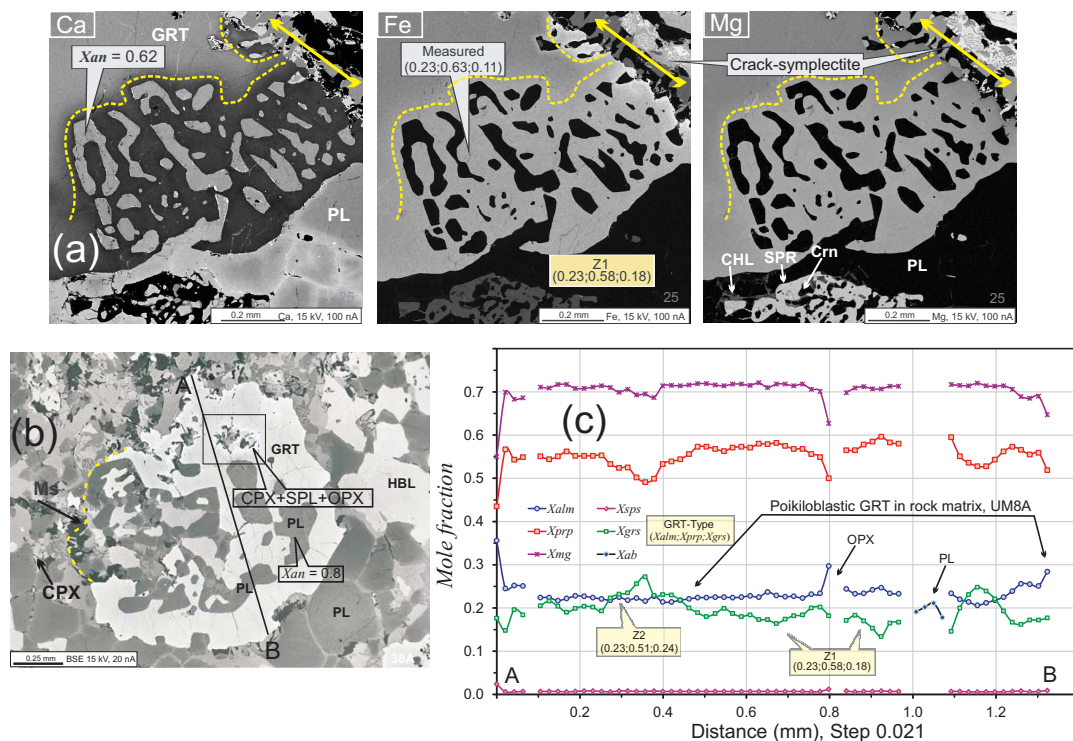


Figure 9. The poikiloblastic garnet. The designation of these garnets is based on their resemblance with the common poikiloblastic microstructure. It is used without any genetic co-notation. **(a)** Ca, Fe and Mg distribution maps at the rim of a large garnet evolving towards a poikiloblastic garnet of GRT-type Z1. The dashed lines delineate the poikiloblastic garnet. At its upper right part signified with a double yellow arrow, a symmetrical crack-symplectite containing an [OPX+SPL]- domain cross-cuts the poikiloblastic garnet. The associated pronounced diffusion profile (best seen in the Fe- distribution map) overprints the poikiloblastic garnet. **(b)** BSE image of an poikiloblastic garnet in the rock matrix. The inclusion domain in the rectangle shows a diffusion profile around clinopyroxene, orthopyroxene and spinel inclusions. **(c)** Profile across the garnet in figure (b). The garnet close to the plagioclase inclusions shows a homogenized element distribution resembling that of GRT-type Z1. Close to the inclusion domain shown in Figure (b), the element distribution resembles rather that of the older GRT-type Z2.

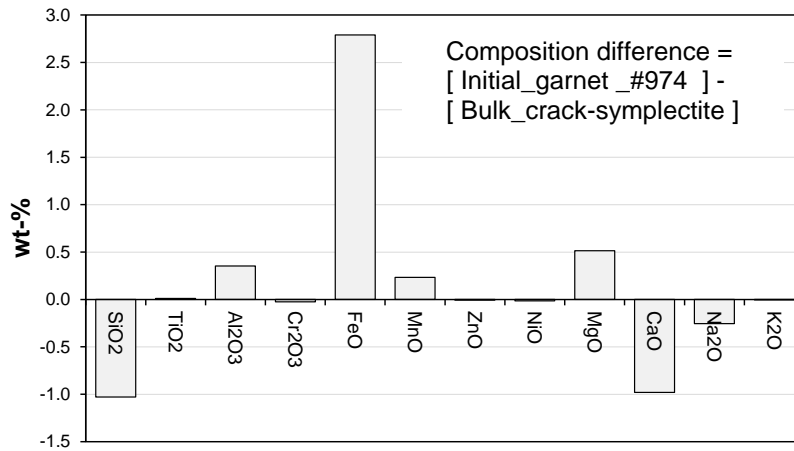


Figure 10. Difference between the composition of the initial garnet and the bulk composition of the crack-symplectite.. See also Fig. 5e and Fig. 4d.

For the calculation of the stability fields of the assemblages GRT+CPX+Ky and CPX+OPX+ SPL+PL, the Theriak—Domino software (de Capitani & Petrakakis, 2010), version 03.01.2012 with the associated database file jun92.bs was used. Because of the appreciable amounts of the *cTs* component in the measured clinopyroxene and the lack of appropriate *a-x* relations, a three-site ideal mixing model for clinopyroxene comprising the phase components *di*, *hd*, *cTs* and *jd* was formulated.

- 5 Sapphirine was omitted, as the available data seem to be inappropriate for the peculiar composition of the rock sample. Therefore, some parts of the following diagrams between the stability fields of the above two assemblages may be metastable with respect to sapphirine. Because of the very low, almost negligible Mn content in garnet and bulk rock, we added the minor Mn to Fe and utilized the ternary mixing model for garnet included in the database. We also omitted the very low contents of K measured in the rock and the minerals as well as P.
- 10 The equilibrium assemblage *PT* diagram (pseudosection) of Fig. 11a is based on the rock bulk composition. It reproduces well the two target assemblages mentioned above. The inset in Fig. 11b shows the same diagram expanded up to 20 kbar. The primary assemblage GRT+CPX+Ky is stable at $P > 11$ kbar and T between 760 and 880 °C. From there, the stability field of the crack-symplectite CPX+OPX+SPL+PL may be reached by a more or less isothermal decompression to pressures of less than 9 kbar, but higher than c. 5 kbar. This low P -limit is constrained by the absence of olivine in the symplectites.
- 15 Figure 11b shows the isopleths of garnet equilibrium composition. If an original growth zoning acquired during propagation of the garnet growth front at local equilibrium has been preserved without any modification by intracrystalline diffusion, all component isopleths should intersect at a single *PT*- point. Based on this figure, Fig. 11c shows the isopleths distribution for the observed GRT-types. According to the applied thermodynamic model, for none of the GRT-types does a common intersection point of the isopleths for the measured X_{alm} , X_{prp} and X_{grs} exist. We consider this as an indication of perturbation
- 20 of garnet composition from equilibrium. This holds not only for the stability field of the primary assemblage, but also for all other assemblages shown in Fig. 11a. This indicates that the garnet composition has been modified substantially during the

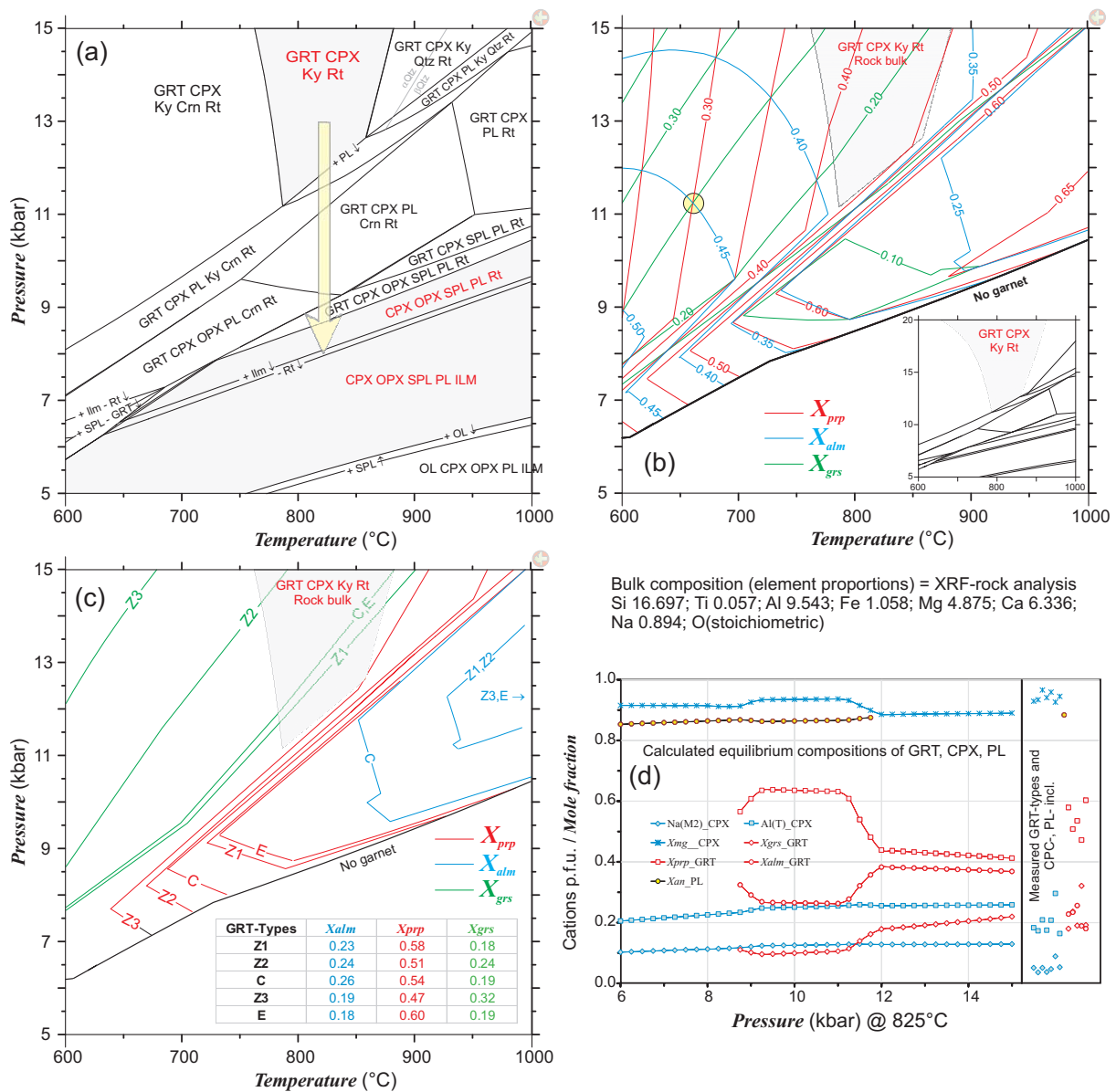


Figure 11. *PT* diagrams and composition of phases in sample UM8. (a) Equilibrium assemblage *PT* diagram (pseudosection) based on the rock bulk rock composition reproducing well the observed primary assemblage GRT+CPX+Ky+Rt and the later formed crack-symplectite assemblage CPX+OPX+ SPL+PL+ILM. The arrow denotes schematically the transition by isothermal decompression from the former to the latter assemblage. (b) Isopleths of the modeled ternary garnet equilibrium composition. The shaded area corresponds to the stability field of the primary assemblage. The yellow circle emphasizes the necessity of a common intersection point of the isopleths in case of a preserved equilibrium composition. The inset *PT* diagram is an extension of figure (a) up to 20 kbar. (c) Implied isopleths of the measured GRT-types and their proximity to the stability field of the primary assemblage denoted by the shaded area. The inset table summarizes the composition of the GRT-types. (d) Comparison of the measured GRT-types, clinopyroxene and plagioclase inclusions with their calculated equilibrium mineral compositions in the range 15–6 kbar at 825 °C.

evolution of the rock. Fe appears to have been partially lost and homogenized towards lower values for all garnet types. In case of GRT-types Z3 and E, the measured X_{alm} isopleth lies far beyond the right side of the figure. The prp isopleths are much lesser dispersed and lie closest to the stability field of the primary assemblage. Ca seems to "resist" extensive modification, perhaps "memorizing" a prograde PT past of the rock, especially within the Ca-rich GRT-type Z3. Taking however into account the relative timing of the garnet types ($Z1 < Z3 < Z2 \leq C$), it becomes evident that, for example, the Ca-rich GRT-type Z3 cannot reflect some earlier preserved PT information. In this case, GRT-type Z3 should be the oldest compositional element of the complex garnet structure. Indeed, if Fe has been partially removed from the garnet (cf. also Fig. 10) pushing the measured X_{alm} far to the right of Fig. 11c, the contents of Ca and Mg in garnet should have increased due to stoichiometric constraints. This increase should have displaced the isopleth of the measured X_{grs} to the left and the isopleth for the measured X_{prp} to the right of this figure. The opposite is certainly also true. Therefore, the measured higher Ca contents in some GRT-types do not necessarily reflect preserved past PT information.

Evaluating the degree of deviation of the various GRT-type isopleths from equilibrium by their proximity to the stability field of the primary assemblage, it may be concluded that GRT-type C occurring in the inner part of the garnet is the least disturbed type with its grs isopleth still lying within this stability field. We consider therefore GRT-type C as the best available garnet composition approaching better the stability field of the primary assemblage.

The measured compositions of inclusions in garnet are compared with calculated compositions along the decompression path shown in Fig. 11d. The pressure range 15 to 6 kbar at 825 °C is thought to be representative for the decompression implied by Fig. 11a. With the exception of garnet for $P < 12$ kbar, the calculated equilibrium composition of the minerals are rather insensitive to P change. The cTs and jd contents in clinopyroxene are predicted to decrease slightly with decreasing pressure. Plagioclase is stable below ~12 kbar outside the stability field of the primary assemblage. Therefore, the plagioclase observed in inclusion domains in garnet is secondary. The calculated composition of plagioclase remains unchanged down to 6 kbar. Noticeably, the measured composition of plagioclase inclusions is in excellent agreement with the calculated one. The measured X_{mg} and $X_{Al,T}$ of the clinopyroxene inclusions are very close to the calculated values. The clinopyroxene is di -rich and contains an appreciable amount of cTs component. In contrast, the measured X_{Na} shows the largest deviation from its calculated value pointing to almost complete loss of Na. This loss is probably related to the stabilization of plagioclase below ~12 kbar as well as to the formation of hornblende and the recrystallization of the matrix after decompression. This view is corroborated by the fact that the composition of the clinopyroxene inclusions are very similar with the compositions of the clinopyroxene in the rock matrix.

The calculated results for the symplectite assemblage CPX+OPX+SPL+PL shed more light and reliability to the PT evolution of the rock. Fig. 12a is an equilibrium assemblage diagram (pseudosection) calculated for a bulk composition equaling the initial garnet analysis #974 shown in Fig. 5e. A minor amount of quartz was added to this composition in order to suppress the formation of olivine implied by the excess SiO_2 of the bulk symplectite over the initial garnet, see Fig. 10 and section 6. This quartz is quickly consumed already during the first calculated steps of decompression shown in Fig. 12b. The stability field of the target assemblage CPX+OPX+SPL+PL in Fig. 12a refines the magnitude of decompression down to pressures between 7.5 and 5 kbar and temperatures above 730 °C.

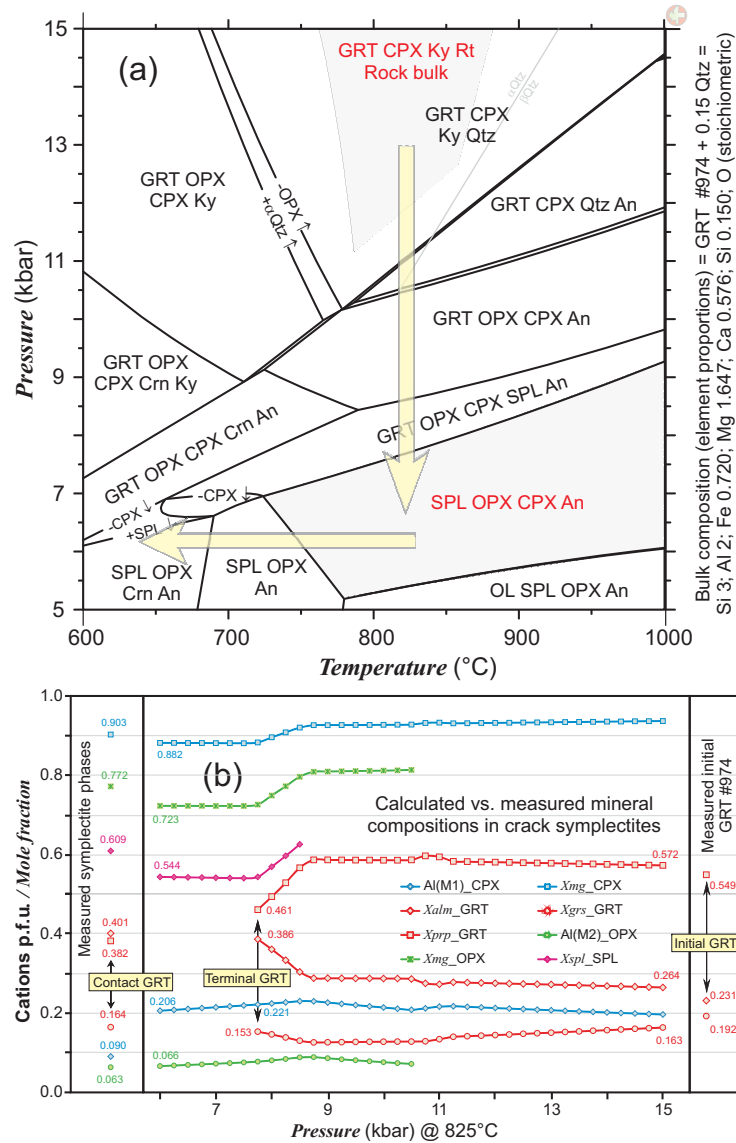


Figure 12. Isochemical break-down of garnet to crack- symplectite. (a) Equilibrium assemblage *PT* diagram (pseudosection) for a bulk composition equaling the composition of the initial garnet shown in Fig. 5e. The upper shaded area corresponds to the stability field of the primary assemblage GRT+CPX+Ky in Fig. 11a. The lower shaded area corresponds to the refined stability field of the observed crack-symplectite CPX+OPX+SPL+PL shown in Fig. 4d. The decompression arrow shows schematically the transition from the former to the latter assemblage. For the cooling arrow, see discussion in section 8.3. (b) Calculated mineral equilibrium composition along the decompression denoted by the arrow in figure (a). The terminal garnet is the last calculated composition before complete garnet elimination. The contact garnet is the spatially best resolved analysis of the retreating garnet edge in contact with symplectitic phases. Measured compositions of the initial garnet and symplectitic pyroxenes and spinel (cf. Fig. 5e) are shown for comparison. The results are summarized in Table 3.

In Fig. 12b, the calculated mineral compositions are compared with those measured within the symplectite. Again, the pressure range 6–15 kbar at 825 °C is thought to be representative for the decompression. It is interesting to note that the measured initial garnet composition (a GRT-type C) lies close to the calculated garnet composition at, say, 15 kbar. The diagram predicts that during decompression the garnet equilibrium composition remains fairly stable down to pressures of ~9 kbar. Then, it changes continuously to its terminal composition lying at ~7.8 kbar. The agreement between the compositions of the contact and terminal garnet is particularly good, especially in case of Ca and Fe. This corroborates the view that, in contrast to clinopyroxene and plagioclase, garnet did not suffer further modification by post-decompression recrystallization. The large discrepancy between the measured and the calculated clinopyroxene compositions is due to the Na-free bulk composition used in the calculation. Accordingly, the calculated plagioclase in equilibrium with the phases shown in Fig. 12b is pure anorthite, instead of the observed plagioclase with $X_{an} = 0.95$ (Supplement, Table S5).

Beside the contact garnet composition, the applied thermodynamic model reproduces very well also the measured modal distribution of the symplectitic phases (Table 3).

The above results are not biased by any external thermobarometric references. They are based solely on the bulk composition of the rock or on the initial garnet that were input to the applied thermodynamic model. The overall non-equilibrium state of the garnet has been established not only by the Ca-distribution map shown in Fig. 6, but also by checking, if the *grs*, *alm* and *prp* isopleths are crossing each other at a single point, providing evidence of preserved equilibrium (Fig. 11c). The calculated equilibrium assemblage diagrams reproduce well the observed assemblages and, in case of the isochemical break-down of garnet to the crack- symplectite, the measured compositions and volumes of garnet and symplectitic phases.

8 Discussion

8.1 Symplectite formation

Despite the single *PT* history experienced by the rock, the observed symplectite diversity points to the influence of the local environment on their formation. The inclusion-related symplectites are the products of reaction of garnet with its kyanite inclusions. The rim- symplectites are the products of reactions of the garnet rim with the rock matrix. In case of the crack-symplectites, it is the fact that garnet was less stable and broke-down partially, leading thus to the presumption that the crack-symplectites are more or less isochemical to the garnet. This presumption has been verified by measurement of volume and composition of the symplectitic phases as well as by the results of the applied thermodynamic modeling.

Symplectite formation requires three processes to occur simultaneously. Firstly, chemical components must be redistributed at the reaction front, because the precursor garnet (being considered chemically homogeneous on the scale of the forming symplectite) is replaced by an intergrowth of the chemically distinct symplectite phases at a sharp reaction front. The redistribution of these components occurs by diffusion within the reaction front (Gaidies et al., 2017). Secondly, for the reaction front to propagate, bonds must be broken in the precursor garnet at the leading edge of the reaction front, and new bonds must be established at its trailing edge forming the symplectite phases. The bulk of this process is referred to as *interface reaction*. And thirdly, new interfaces are formed separating the different symplectite phases.

Table 3. Calculated vs. measured composition and volume of clinopyroxene, orthopyroxene, spinel and plagioclase making up crack-symplectites. The calculated compositions and volumes are based on a bulk composition equaling the initial garnet in Fig. 5e. Methods of volumetric analysis and calculation of bulk symplectite composition are described in the Supplement.

		Composition		Volume-%	
Phase		Calculated @ 825°C, 7.75 kbar	Measured	Calculated @ 825°C, 7.75 kbar	Measured
CPX	Al _(T)	0.221	0.090	0.7	47.4 ^(a)
	X _{mg}	0.882	0.903		
	X _{Na}		0.021		
OPX	Al _(M1)	0.077	0.063	47.2	
	X _{mg}	0.726	0.772		
SPL	X _{mg}	0.543	0.609	10.1	12.3
PL	X _{an}	1.000	0.945	40.1	40.3
GRT ^(c)	X _{alm}	0.386	0.394 ^(b)	1.9	0.0
	X _{prp}	0.461	0.414		
	X _{grs}	0.153	0.185		

- (a) Value includes 8.1 % HBL considered as substitute for CPX.
(b) Value includes X_{sps} = 0.027.
(c) GRT-values correspond to terminal (calculated) and contact (measured) garnet.

Symplectite formation is initiated by a change in the environmental conditions of the rock. In case of the sample at hand, this change is characterized by decompression at a more or less constant high temperature. The garnet in contact with the newly forming symplectitic phases has a distinctly different composition from the breaking-down garnet. This composition difference sets up transient gradients in chemical potential of the garnet components that decay with time. This process implies a time-
5 dependent change of the composition of the breaking-down and retreating garnet edge that is accomplished by intra-crystalline diffusion. This change in composition is accompanied by recrystallization. In case of the inclusion-related symplectites, this recrystallization has led to a garnet edge that overgrew its own breaking-down products (Fig. 3d,e). The measured diffusion profiles at the breaking-down and retreating garnet edge (Fig. 5) reflect the “frozen-in” state of the above mentioned transient gradients at some time past the very first formation of the symplectite phases. Therefore, they allow us to calculate the time
10 scale of symplectite evolution. This is discussed in the next section.

It is suggested that the frequently observed change of characteristic inter-granular spacing (and size) of the symplectite phases correlates positively with the temperature of symplectite formation. Remmert et al. (2018) presented experimental evidence corroborating this view and argued that the characteristic spacing of symplectite phases is small at low temperatures, whereby symplectite formation tends to be diffusion-controlled. The characteristic spacing becomes larger at higher temper-
15 atures, whereby diffusion is more efficient, and symplectite formation becomes interface-reaction-controlled. The systematic decrease of the characteristic spacing of the symplectite phases from the older, external portions to the younger internal portions of the symplectite is observed in the rim and crack symplectites described above (Fig. 4).

EBSD analysis revealed a crystallographic orientation relationship (COR) between orthopyroxene and spinel in the rim- and crack- symplectites (cf. Supplement, Fig. S1). According to Obata (2011) and Obata and Ozawa (2011), CORs occur

in symplectites around garnet in ultramafic rocks that have formed at temperatures higher than ~800 °C; they are missing in symplectites that have formed at much lower temperatures. In the samples at hand, the COR between orthopyroxene and spinel is observed in both the early coarse-grained and the late fine-grained portions. Therefore, the *T*-change monitored by the symplectites of this study is rather small.

- 5 In summary, the studied symplectites have been formed most probably during cooling of the rock, but still at high temperature. It is thus very likely that the onset of symplectite evolution coincides with the transition from the more or less isothermal rock decompression to a more or less isobaric cooling (cf. Fig. 12a). This stage of rock evolution is discussed further below.

8.2 Time scale of symplectite formation

- The systematic compositional changes of garnet towards the interfaces to the symplectite can be explained by re-equilibration of the garnet that was mediated by intra-crystalline cation diffusion. One of the best examples observed in the studied samples refers to the crack symplectite shown in Fig. 4d and the associated garnet profiles in Fig. 5e. The typically low Mn content of the garnet increases slightly towards the garnet–symplectite interface. This is probably due to the fact that the symplectite assemblage cannot accommodate the entire Mn of the garnet, which is then "pushed back" into the reactant garnet, where it is passively enriched immediately ahead of the symplectite reaction front. The Ca content remains largely unaffected, whereas Fe is successively enriched and Mg successively depleted towards the garnet–symplectite interface. The inter-diffusion of Ca, Mg, Fe and Mn in garnet was modeled using a 1D implicit finite difference method. The diffusion coefficients were taken from Chakraborty and Ganguly (1992). Fixed concentration boundary conditions were defined by the contact garnet closest to the garnet-symplectite interface ($X_{alm} = 0.37$; $X_{prp} = 0.41$; $X_{grs} = 0.19$) and the initial garnet #974 ($X_{alm} = 0.24$; $X_{prp} = 0.55$; $X_{grs} = 0.20$), see Fig. 5e and Supplement, Table S2. Mn (X_{sps}) was treated as the dependent component. To minimize cutting effects, the shortest profile T-U shown in both figures was selected. Fitting of the model curves to the measured point analyses in Fig. 5e) yielded time scales of 340, 20 and 1.5 years for the assumed temperatures of 700, 800 and 900 °C, respectively. On the geological time scale, this corresponds to an ephemeral event. Such short-term diffusion cannot be explained by cooling alone. As will be discussed below, interface reactions responsible for symplectite formation is substantially mediated by the presence of H₂O-fluids. A limited availability of such fluids may inhibit the progress of symplectite formation.

8.3 Synthesis

- The complex compositional structure of the garnet in Fig. 6 cannot be explained simply as a (partially) preserved growth or (partial) homogenization at high temperature conditions. Additionally and as shown by the measured isopleths, the composition of all garnet types seems to deviate from equilibrium. The “older” GRT-type C occupies the large interior part of the garnet; its composition shows the least deviation from equilibrium, corresponding closest to *PT*-conditions pertaining to the stability field of the primary assemblage GRT+CPX+Ky. The Ca-rich GRT-type Z3 occupies a wide zone parallel to the garnet rim showing the largest observed deviation from equilibrium. GRT-type Z1 is the latest garnet type showing the most obvious relation to the action of metasomatizing agents. It is formed along a garnet crack, intrudes irregularly the garnet interior and extends in a

narrow zone along the garnet rim. Finally, the distribution of garnet types in Fig. 6 shows a relative timing of formation that can be summarized by $Z1 < Z3 < Z2 \leq C$.

All these features provide convincing evidence that the garnet shown in Fig. 6 has undergone diffusion-aided metasomatic modification during the late stages of its evolution represented best by GRT-types Z3 and Z1. Accordingly, the "younger" GRT-type Z3 might have been evolved from the "older" GRT-type C by removal of a total amount of 12 mol-% of Fe + Mg (Table 2; Fig. 5a). Recalling that GRT-type Z3 predates symplectite formation and that the GRT-type Z1 shows intracrystalline deformation (Fig. 8) due to tectonic displacement (see below), we may conclude that the metasomatic alteration that formed GRT-type Z3 and Z1 might have taken place under *PT*- conditions close to the conditions of the primary assemblage. An obvious metasomatizing agent might have been an anatectic melt and/or its accompanying fluids derived from the adjacent felsic rocks (cf. Hasalová et al., 2008a). Interestingly, Štípská et al. (2014a, b) inferred anatectic melts and fluids capable of transforming eclogites embedded in felsic granulites of the Blanský les massif to intermediate garnet and pyroxene-bearing granulites at pressures of ~12 kbar, but higher temperatures of 950 °C.

The calculated equilibrium assemblage diagram in Fig. 11 constrains the lower pressure of 11 kbar at ~800 °C for the stability of the primary assemblage GRT+CPX+Ky. Due to compositional modification of garnet and resetting of clinopyroxene inclusions, a reliable estimate of pressure is questionable. Nevertheless, these conditions are comparable to peak conditions of 14.5 ± 2 kbar and 870 ± 50 °C estimated by Johansson and Möller (1986) for the same primary assemblage in mafic rocks of similarly Mg-, Al- and Ca-rich composition from Roan, Western Gneiss Region, Norway. Incidentally, these Norwegian rocks have evolved during retrogression to an "intermediate-*P*" granulite comprising orthopyroxene, spinel, anorthite, andesine, sapphirine and corundum (Johansson and Möller, 1986).

Associated with the latest GRT-type Z1 are the poikiloblastic garnets with their numerous plagioclase inclusions. As shown in Fig. 9, these garnets evolved continuously on or from pre-existing, inclusion-poor garnet. Texturally very similar poikiloblastic garnets with numerous plagioclase inclusions have been described by Racek et al. (2008) in garnet- and pyroxene-bearing granulites of the Sankt Leonhard granulite massif (their sample D454). As these garnets did not match well with the other features observed in their samples, they have been called by these authors "enigmatic". Despite the chemical and paragenetic differences that are certainly controlled by bulk composition, the strange poikiloblastic and "enigmatic" garnets are pointing to a common process that is seemingly acting not only locally on the granulites of Sankt Leonhard or on those of the Dunkelsteiner Wald, but on a regional scale. As in case of the GRT-type Z3 above, the suspicion falls again on the metasomatic agents related with anatectic melts and/or associated fluids. The anatectic nature of at least the quartzo-feldspathic rocks in the Gföhl Nappe System and Drosendorf Nappe System has been inferred by Petrakakis (1986, 1997), Racek et al. (2006), Hasalová et al. (2008a), Schulmann et al. (2008) and references therein. Metasomatic alteration mechanisms affecting minerals and rocks by anatectic melts and/or fluids seem to be complex and are currently not clear. However, as far as the poikiloblastic garnets of this study are considered, it should be recalled (cf. Fig. 9) that they pre-date the formation of the crack-symplectites. Their formation is, therefore, related most probably to the activity of metasomatizing agents during the latest stage of garnet evolution.

The inferred more or less isothermal decompression starting in the stability field of the primary assemblage above 11 kbar and ending in that of the crack-symplectite at 5–7 kbar (cf. Fig. 12) constrains also any other symplectite formed by break-down

of the primary assemblage, e.g. also the inclusion-related symplectites not treated here in detail. For the very similar crack- and rim- symplectites, the appropriate reactions started until the pressure reached values of less than ~7 kbar. This decompression was most probably related to the nearly vertical extrusion of the rocks to mid-crustal levels suggested by Štípská et al. (2004), Schulmann et al. (2005, 2008), Franěk et al. (2006), Tajčmanová et al. (2006), Racek et al. (2006), Duretz et al. (2011). This major deformation event was most likely responsible also for the development of subgrains within GRT-Type Z1 (cf. Fig. 8), and the opening of cracks within garnet (Fig. 4e) and rock matrix (Fig. 2a). We interpret the straight, darker, hornblende- and white mica-rich bands cross-cutting the rock matrix as cracks that have been healed during late, post-decompression recrystallization conditions (see below). At the high temperatures indicated by the metamorphic assemblages of the sample at hand, the opening of such brittle structures implies rather high strain rates. The cracks in garnet and rock matrix have enabled fluid infiltration and favored component mobility to sites of interface reaction forming the symplectites.

On the other hand, the excellent preservation of the delicate symplectite microstructures, especially of the “unprotected” rim kelyphites, points to symplectite formation under low differential stress. This is supported also by the extensive matrix recrystallization leading to the observed granoblastic matrix as well as by the complete absence of localized shearing even along favorable preexisting, brittle planar elements like the healed cracks shown in Fig. 2a (Mancktelow, 2008; Mancktelow et al., 2013, cf.). The crack- symplectites were formed largely at post-decompression conditions during isobaric cooling at ~6 kbar (cf. Fig. 12). As already discussed in section 8.1, symplectite formation during cooling is indicated by the micro-structural features shown by the symplectitic phases. Isothermal decompression of the Gföhl Nappe System followed by isobaric cooling at similar pressures has been demonstrated also in GRT+OPX-granulites (Petrakakis and Jawecki, 1995; Petrakakis, 1997). This stage of the rock evolution is likely related to the lateral distribution of the rocks by horizontal channel flow within the middle-crust, as suggested by the authors cited in the previous paragraph.

It has been argued by Remmert et al. (2018) that symplectite formation only occurs in a rather narrow window of bulk water contents. Whereas the formation of symplectites is hampered in completely dry systems, a Garben microstructure with little spatial organization is formed at high water contents. The presence of a fluid phase during formation of the crack- symplectites is corroborated by the fact that within the crack- symplectites, which are largely isochemical with GRT-type C, the plagioclase contains some Na (cf. Fig. 10 and Supplement, Table S5). This Na could not have been derived from the precursor garnet, but necessarily supplied from the environment. Very likely, at least some Na (and Si) has been transferred to the reaction front, and some Ca (and Al) in the opposite direction. The latter has possibly contributed to the *an*-enrichment of the outer rims of matrix plagioclase (cf. Fig. 2c, Fig. 4a and b). The transfer of the chemical components most likely occurred by diffusion through fluid films at the grain boundaries and along triple junction arrays in the rock matrix. Furthermore, small volumes of HBL+PL- symplectite evolving from OPX+SP+PL- symplectite during the latest stages of kelyphite evolution provide additional direct evidence for the presence of a hydrous fluid. The observed slope inversion of the diffusion profile shown in Fig. 5d most likely reflects this change of the symplectitic assemblage. At least part of the fluid mediating symplectite formation at post-decompression conditions may have been derived by the crystallization of anatectic melts. In this respect, the cracks in the rock matrix might have promoted fluid mobility by forming favorable pathways to reaction sites.

Despite the cooling documented by the symplectite microstructures, symplectite formation led to a very limited replacement of the garnet. This is also supported by the remarkably very short duration of symplectite formation calculated from the diffusion profile shown in Fig. 5e. Furthermore, the recrystallized matrix contains currently a high temperature, barely retrogressed assemblage with abundant clinopyroxene and plagioclase and very minor hornblende. These features are consistent with limited availability of H₂O rather, than increasingly sluggish reaction kinetics induced by cooling. The reason for this might have been the healing of the rock cracks due to the enhanced local formation of hornblende and white mica.

Finally, the following question deserves some discussion. If metasomatic modification of FeO, MgO, CaO in garnet has taken place, how reliable are the presented equilibrium assemblage diagrams that rely on compositions assumed to be closed for such system components? As the metasomatic modification has affected at least the garnet, but before decompression, the question applies only to the primary assemblage GRT+CPX+Ky. As discussed already, the modification of garnet seems to be minor and of the order of c. 12 mol-% of Ca equivalents. On the other hand, which could have been the alternative primary assemblage for this peraluminous, potassium-poor and CPX-rich rock beside GRT+CPX+Ky? Due to the small number of coexisting phases (cf. Fig. 11a), the high variance of the primary assemblage is related to its large stability field extending far above 15 kbar (cf. inset in Fig. 11b). This underlines its low sensitivity in terms of changing *PT* as well as other external factors like the chemical potentials of CaO, FeO and MgO involved in the metasomatic change of the garnet. These changes may have induced the observed displacements of composition in garnet away from equilibrium, but hardly the assemblage. Therefore and despite this metasomatic modification, we consider GRT+CPX+Ky as the primary assemblage, precluding, however, the derivation of reliable geobarometric estimates therefrom.

8.4 Towards more reliable *PT*-estimates

Apart from emphasizing the inherent uncertainty in the *PT* estimates of rocks within the Gföhl Nappe System, a more general implication of our analysis needs to be addressed. Despite of the refractory nature of garnet, its composition may be strongly modified during high-grade metamorphism. The primary composition zoning attained during growth may be partially or completely obliterated by intracrystalline diffusion during prolonged high-temperature metamorphism and/or during successive stages of recrystallization, partial replacement or diffusion-mediated metasomatic alteration. Chemical alteration of garnet can be directly identified from secondary chemical zoning that is directly related to late-stage features such as cracks, veins or resorption features. More cryptic alteration such as homogenization during thermal annealing may be difficult to identify by petrographic means. In such case, the comparison of observed garnet compositions and calculated garnet-composition isopleths in equilibrium assemblage diagrams (pseudosections) is the method of choice for testing, whether an equilibrium composition was preserved or the garnet composition is due to post-formational modification. When reconstructing the *PT* conditions of high-grade metamorphic rocks, such a test is mandatory. Even at conditions, where mafic granulites are well below their solidus temperature, anatectic melt derived from nearby felsic granulites may serve as a metasomatic agent that facilitates chemical mass transport and, at the same time, speeds up mineral reactions. Typically, in case of Gföhl Nappe System within the Moldanubian Unit, mafic granulites are comparatively small rock bodies immersed in more voluminous felsic granulites.

Interaction between felsic and mafic lithologies at granulite facies conditions is an efficient and widespread process leading to partial loss of the “petrogenetic memory” of otherwise refractory minerals and rock types.

9 Conclusions

- 5 • Peraluminous, mafic granulites associated with the ultramafic rocks of the Dunkelsteiner Wald in the Gföhl Nappe System, Austria, contain large garnets embedded in a well recrystallized granoblastic matrix of clinopyroxene, plagioclase and minor hornblende. The garnets contain inclusions of kyanite and Al-rich, Na-poor clinopyroxene. They are partly replaced by (a) symplectites around Ky-inclusions composed of Crn, SPR, SPL, PL, (b) symplectites at their rims comprising OPX, SPL, PL and minor HBL, and (c) symplectites within cracks containing OPX, CPX, SPL, PL and minor HBL. The diversity of these symplectites is locally controlled.
- 10 • Extensive microprobe analysis and element mapping revealed that the garnets are Ca- and Mg-rich and compositionally complex. They are built up from different composition patterns (GRT-types) showing a specific relation among Fe, Mg and Ca. These GRT-types may be repeatedly observed in garnets. The mode of occurrence and the cross-cutting relations among these GRT-types within large garnet crystals allowed for the derivation of their relative timing of formation. At least the latest GRT-types show strong evidence of metasomatic alteration. Related with these garnet types are peculiar
15 poikiloblastic garnets with numerous plagioclase inclusions.
- Crack symplectites are shown to be largely isochemical with the oldest garnet type hosting them.
- Garnet in contact with symplectites shows a pronounced, diffusion-driven composition change within a couple of tens of μm ahead the garnet–symplectite interface. This change is linked to symplectite formation and has overprinted the underlying GRT-types. Therefore, symplectite formation post-dates the bulk compositional structure of garnet.
- 20 • Calculated equilibrium assemblage diagrams and analysis of the measured garnet component isopleths showed the following. (a) The primary assemblage GRT + Al-rich-CPX + Ky has been formed at pressures above 11 kbar and temperatures about 800 °C. (b) None of the measured GRT-types and compositions is a preserved equilibrium composition. (c) Especially the most Ca-rich GRT-types show metasomatically induced loss of Fe and Mg that affected their Ca-content. This alteration has taken place at *PT*- conditions close to the stability conditions of the primary assemblage. (d) The
25 crack-symplectite assemblage is stable at pressures of 5–7 kbar and temperatures above ~730 °C.
- Calculation of equilibrium assemblage diagrams (pseudosections) allows for the evaluation of the equilibrium or non-equilibrium state of minerals, particularly of garnet that is commonly included in calculations of *PT*-estimates. With these techniques, the observed mineral assemblages and measured mineral compositions may be reproduced adding to the reliability and confidence of *PT*-estimates and *PT*-paths derived therefrom.
- 30 • At least for metamorphic conditions pertaining to high-grade Moldanubian rocks, the commonly made assumption that measured Ca-contents and Ca-zoning in garnet invariably preserves past *PT*-information is called into question.

- The rocks have undergone a more or less isothermal decompression to pressures between 5 and 7 kbar related to the extrusion of the rocks of the Gföhl Nappe System to middle-crustal levels. This major deformation event has led to the formation of subgrains in garnet as well as cracks in garnet and rock matrix.
- The decompression induced the formation of the symplectites. At least the crack- and rim- symplectites were formed after decompression within a short time interval of lesser than 0.5 ka during almost isobaric cooling at ~6 kbar under conditions and low differential stress. Symplectite formation was promoted by hydrous fluids.
- The limited extend of garnet replacement by symplectites, the very short time interval of symplectite formation and the preservation of a barely retrogressed, granoblastic rock matrix of clinopyroxene, plagioclase and minor hornblende indicates limited availability of H₂O during cooling of the rocks.

10 *Competing interests.* The authors declare that they have no conflict of interest.

Acknowledgements. Theo Ntaflos (Department of Lithospheric Research, University of Vienna) is acknowledged for providing the samples many years ago. Franz Kiraly (ibidem) is acknowledged for provision of technical expertise and assistance during microprobe work. Ben Huet and Christoph Iglseder (Geological Survey of Austria) have contributed to the goals of this paper with provision of geological maps, critical comments and fruitful discussions. Hans-Joachim Massonne (Universität Stuttgart) and Martin Racek (Institute of Petrology and Structural Geology, Faculty of Science, Charles University, Prague) are acknowledged for thorough and constructive review of the paper. The editorial work of Frederico Rossetti is acknowledged for essential contributions to shaping of the paper and sharpening of the outcomes.

References

- Carswell, D. A., Möller, C., and O'Brien, P. J.: Origin of sapphirine-plagioclase symplectites in metabasites from Mitterbachgraben, Dunkesteinerwald granulite complex, Lower Austria, *European Journal of Mineralogy*, 1, 455–466, 1989.
- Chakraborty, S. and Ganguly, J.: Cation diffusion in aluminosilicate garnets: experimental determination in spessartine-almandine diffusion couples, evaluation of effective binary diffusion coefficients, and applications, *Contributions to Mineralogy and Petrology*, 111, 74–86, 1992.
- Cháb, J., Stráník, Z., and Eliáš, M.: *Geologická mapa České republiky 1:500 000*, Česká geologická služba, 2007.
- Duret, T., Kaus, B., Schulmann, K., Gapais, D., and Kermarrec, J.: Indentation as an extrusion mechanism of lower crustal rocks: Insight from analogue and numerical modelling, application to the Eastern Bohemian Massif, *Lithos*, 124, 158–168, 2011.
- 10 Faryad, S., W., Nahodilová, R., and Dolejš, D.: Incipient eclogite facies metamorphism in the Moldanubian granulites revealed by mineral inclusions in garnet, *Lithos*, 114, 54–69, 2010.
- Franěk, J., Schulmann, K., and Lexa, O.: Kinematic and rheological model of exhumation of high-pressure granulites in the Variscan orogenic root: example of the Blanský les granulite, Bohemian Massif, Czech Republic, *Mineralogy and Petrology*, 86, 253–276, 2006.
- Gaidies, F., Milke, R., Heinrich, W., and Abart, R.: *Metamorphic mineral reactions.*, vol. 16, pp. 469–540, European Mineralogical Union and the Mineralogical Society of Great Britain and Ireland, EMU Notes in Mineralogy, 2017.
- 15 Hasalová, P., Janoušek, V., Schulmann, K., Štípská, P., and Erban, V.: From orthogneiss to migmatite: geochemical assessment of the melt infiltration model in the Gföhl Unit Moldanubian Zone, Bohemian Massif, *Lithos*, 102, 508–537, 2008a.
- Hasalová, P., Štípská, P., Powell, R., Schulmann, K., Janoušek, V., and Lexa, O.: Transforming mylonitic metagranite by open-system interactions during melt flow, *Journal of metamorphic Geology*, 26, 55–80, 2008b.
- 20 Jedlička, R., Faryad, S., and Hauzenberger, C.: Prograde metamorphic history of UHP granulites from the Moldanubian Zone Bohemian Massif revealed by major element and Y+REE zoning in garnets, *Journal of Petrology*, 56, 2069–2088, 2015.
- Jedlička, R., Faryad, S., and W.: Felsic granulite with layers of eclogite facies rocks in the Bohemian Massif; did they share a common metamorphic history?, *Lithos*, 286–287, 408–425, 2017.
- Johansson, L. and Möller, C.: Formation of sapphirine during retrogression of a basic high-pressure granulite, Roan, Western Gneiss Region, Norway, *Contributions to Mineralogy and Petrology*, 94, 29–41, 1986.
- 25 Kalvoda, J., Bábek, O., Fatka, O., Leichmann, J., Melichar, R., Nehyba, S., and Spacek, P.: Brunovistulian terrane (Bohemian Massif, Central Europe) from late Proterozoic to late Paleozoic: A review, *International Journal of Earth Sciences*, 97, 497–518, 2008.
- Kleinschrodt, R. and Duyster, J.: HT-deformation of garnet: An EBSD study on granulites from Sri Lanka, India and Ivrea Zone, *Journal of Structural Geology*, 29, 1829–1844, 2002.
- 30 Kleinschrodt, R. and McGrew, A.: Garnet plasticity in the lower continental crust: Implications for deformation mechanisms based on microstructures and SEM-electron channeling pattern analysis, *Journal of Structural Geology*, 22, 795–805, 2000.
- Kornprobst, J., Piboule, M., Roden, M., and Tabit, A.: Corundum-bearing Garnet Clinopyroxenites at Beni Bousera Morocco: Original plagioclase-rich gabbros recrystallized at depth within the Mantle?, *Journal of Petrology*, 31, 717–745, 1990.
- Krenmayr, H., Schnabel, W., and Reitner, J.: *Geologische Karte von Oberösterreich 1:200.000*, Geologische Bundesanstalt, Wien., 2006.
- 35 Linner, M.: Metamorphism and partial melting of paragneisses of the Monotonous Group, SE Moldanubicum, Austria, *Mineralogy and Petrology*, 58, 215–234, 1996.

- Mancktelow, N., S., and Pennacchioni, G.: Late magmatic healed fractures in granitoids and their influence on subsequent solid-state deformation, *Journal of Structural Geology*, 57, 81–96, 2013.
- Mancktelow, N. S.: Interaction between brittle fracture and ductile flow during crustal deformation, *Boll. Soc.Geol.It. (Ital. J. Geosci.)*, 127, 217–220, 2008.
- 5 Medaris, L., Wang, H., Jelínek, E., Mihaljevič, M., and Jakeš, P.: Characteristics and origins of diverse Variscan peridotites in the Gföhl Nappe, Bohemian Massif, Czech Republic, *Lithos*, 82, 1–23, 2005.
- Obata, M.: Kelyphite and symplectite: textural and mineralogical diversities and universality, and a new dynamic view of their structural formation, in: *New Frontiers in Tectonic Research - General Problems, Sedimentary Basins and Island Arcs*, edited by Sharkov, E. V., chap. 05, InTech, Rijeka, 2011.
- 10 Obata, M. and Ozawa, K.: Topotaxial relationships between spinel and pyroxene in kelyphite after garnet in mantle-derived peridotites and their implications to reaction mechanism and kinetics, *Mineralogy and Petrology*, 101, 217, 2011.
- O'Brien, P. J.: Challenges in high-pressure granulite metamorphism in the era of pseudosections: reaction textures, compositional zoning and tectonic interpretation with examples from the Bohemian Massif, *Journal of metamorphic Geology*, 26, 235–251, 2008.
- Petrakakis, K.: Metamorphism of high-grade gneisses from the Moldanubian zone, Austria, with particular reference to the garnets, *Journal*
- 15 *of metamorphic Geology*, 4, 323–344, 1986.
- Petrakakis, K.: Evolution of Moldanubian rocks in Austria: review and synthesis, *Journal of metamorphic Geology*, 15, 203–222, 1997.
- Petrakakis, K. and Jawecki, C.: High-grade metamorphism and cooling evolution of Moldanubian granulites, *European Journal of Mineralogy*, 7, 1183–1203, 1995.
- Racek, M., P., Pitra, P., Schulmann, K., and Lexa, O.: Metamorphic record of burial and exhumation of orogenic lower and middle crust: a
- 20 *new tectonothermal model for the Drosendorf window Bohemian Massif, Austria, Mineralogy and Petrology*, 86, 221–251, 2006.
- Racek, M., Štípská, P., and Powell, R.: Garnet–clinopyroxene intermediate granulites in the St. Leonhard massif of the Bohemian Massif: ultrahigh-temperature metamorphism at high pressure or not?, *Journal of Metamorphic Geology*, 26, 253–271, 2008.
- Remmert, P., Heinrich, W., Wunder, B., Morales, L., Wirth, R., Rhede, D., and Abart, R.: Synthesis of monticellite–forsterite and merwinite–forsterite symplectites in the CaO–MgO–SiO₂ model system: influence of temperature and water content on microstructure evolution,
- 25 *Contributions to Mineralogy and Petrology*, 173, 1–17, 2018.
- Schnabel, W.: *Geologische Karte von Niederösterreich 1:200.000*, Geologische Bundesanstalt, 2002.
- Schulmann, K., Kröner, A., and Hegner, E. e. a.: Chronological constraints on the pre-orogenic history, burial and exhumation of deep-seated rocks along the eastern margin of the Variscan orogen, Bohemian Massif, Czech Republic, *American Journal of Science*, 305, 407–448, 2005.
- 30 Schulmann, K., Lexa, O., Štípská, P., Racek, M., Tajčmanová, L., Konopásek, J., Edel, J., Peschler, A., and Lehmann, J.: Vertical extrusion and horizontal channel flow of orogenic lower crust: key exhumation mechanisms in large hot orogens?, *Journal of Metamorphic Geology*, 26, 273–297, 2008.
- Svojtka, M., Ackerman, L., Medaris, L., G., Hegner, E., Valley, J., W., Hirajima, T., Jelínek, E., and Hrstka, T.: Petrological, Geochemical and Sr–Nd–O Isotopic Constraints on the Origin of Garnet and Spinel Pyroxenites from the Moldanubian Zone of the Bohemian Massif.,
- 35 *Journal of Petrology*, 57, 897–920, 2016.
- Tajčmanová, L., Konopásek, J., and Schulmann, K.: Thermal evolution of the orogenic lower crust during exhumation within a thickened Moldanubian root of the Variscan belt of Central Europe, *Journal of Metamorphic Geology*, 24, 119–134, 2006.

- Štípská, P. and Powell, R.: Constraining the P–T path of a MORB-type eclogite using pseudosections, garnet zoning and garnet-clinopyroxene thermometry: an example from the Bohemian Massif, *Journal of Metamorphic Geology*, 23, 725–743, 2005a.
- Štípská, P. and Powell, R.: Does ternary feldspar constrain the metamorphic conditions of high-grade meta-igneous rocks? Evidence from orthopyroxene granulites, Bohemian Massif., *Journal of Metamorphic Geology*, 23, 627–647, 2005b.
- 5 Štípská, P., Schulmann, K., and Kröner, A.: Vertical extrusion and middle crustal spreading of omphacite granulite: a model of syn-convergent exhumation Bohemian Massif, Czech Republic., *Journal of Metamorphic Geology*, 22, 179–198, 2004.
- Štípská, S., Powell, R., and Racek, M.: Rare eclogite-mafic granulite in felsic granulite in Blanský les: precursor of intermediate granulite in the Bohemian Massif?, *Journal of Metamorphic Geology*, 32, 325–345, 2014a.
- Štípská, S., Powell, R., Racek, M., and Lexa, O.: Intermediate granulite produced by transformation of eclogite at a felsic granulite contact, in Blanský les, Bohemian Massif, *Journal of Metamorphic Geology*, 32, 347–370, 2014b.
- 10 Vrána, S., Janoušek, V., and Franěk, J.: Contrasting mafic to felsic HP–HT granulites of the Blanský les Massif Moldanubian Zone of southern Bohemia: complexity of mineral assemblages and metamorphic reactions, *Journal of Geosciences*, 58, 347–378, 2013.