

Interactive comment on “A Semi-Automated Algorithm to Quantify Scarp Morphology (SPARTA): Application to Normal Faults in Southern Malawi” by Michael Hodge et al.

Michael Hodge et al.

michaelstvnhodge@gmail.com

Received and published: 18 October 2018

We thank the reviewers for their constructive reviews and apologize for the delay in returning the manuscript. The lead author, Michael Hodge, has left academia for a job with the Civil Service and the second author, Juliet Biggs, is now acting as corresponding author.

The reviewers raise several interesting points regarding the factors which may affect the along-strike variability of scarp heights. To address these comments, we have added the following paragraph to the end of the introduction:

Printer-friendly version

Discussion paper



Our aim is to develop an algorithm capable of measuring along-strike variations in the height of fault scarps at high resolution across a range of settings. The nature of the subsequent analysis and interpretation will, however, depend on the age and type of fault considered as well as the local lithological and climatic conditions. Individual earthquakes can produce scarps of variable height and a mix of on-fault and off-fault deformation (Wang et al., 2014; Gold et al., 2015; Milliner et al., 2016; Nissen et al., 2016). In some circumstances, ruptures are halted by discontinuities or steps in a fault system, whereas other earthquakes produce complex rupture patterns which include multiple fault segments (e.g. Jackson et al., 1982; Hamling et al., 2017). Between earthquakes, erosion depends on variations in lithological and climatic properties, which can produce dramatic changes in scarp height over short distances in only a few decades. For example, some parts of the scarp formed in the 1981 Alkyonides earthquake, Gulf of Corinth, are well-preserved but others have nearly disappeared (e.g. Mechernich et al., 2018). Some fault scarps are formed by individual earthquakes, others are multi-scarps produced by a few events, while others represent the cumulative effects of numerous earthquake cycles over tens of kyrs. In these cases, variations in scarp height may contain information on fault evolution that can be extracted by identifying structural segmentation (e.g. Watterson, 1986; Giba et al., 2012; Manighetti et al., 2015) and the presence of linking structures (e.g. Soliva and Benedicto, 2004; Nicol et al., 2010). However, these long-term effects will be convolved with variations associated with individual earthquakes. This combination of timescales involved in scarp generation raises the question as to what extent variations in offset and erosion persist across multiple earthquake cycles.

Reviewer specific comments.

This paper describes an automated method of fault scarp detection and measurement. The method is first tested on synthetic data, and then applied to faults in southern Malawi on real digital elevation models with a range of resolution (from 30 m to 50 cm). I think that this tool could be used on a range of normal fault scarps, to make

[Printer-friendly version](#)

[Discussion paper](#)



quick automatic maps of displacement. I think this is a nice study with a good level of analysis. However there are some changes that could be made to this manuscript to improve the clarity of the methodology and application to the Malawi faults, and the limitations of an automatic approach. I think that any reader should be cautious in applying automatic methods to DEMs, and the interpretation of scarp heights must take into account (1) the age of offset features, (2) how variable long-term preservation of fault scarps may be, and (3) how much displacement at the surface reflects the structure and linkage of faults at depth (e.g. how does localised surface slip reflect co-seismic slip at depth. I think that the authors of this paper have done a sufficient job of discussing 2-3 in their study area, but (1) must be explained from the start of the paper. I did not realise until the discussion what timescale the scarps were interpreted to represent, but this is integral to the paper.

As this is an open review, I can state that I agree with and overlap with comments made by R1.

General comments:

(1) The introduction needs to give the context of the timescales of displacement calculations. Do the scarps represent a single earthquake, multiple events, or geological offsets? This concept is only introduced in the discussion. I think the introduction should also include a brief description of the climatic setting and local potential for erosion of the scarps how long should we expect them to persist (e.g. years, 100s, 1000s, kyrs?). In general, after reading the discussion, it is still not clear to me how the measured scarp heights can be related to fault growth processes that occur over multiple earthquake cycles on geological (e.g. >10 kyr) timescales. Comparing the slip to length for a single event is reasonable, but if these scarps represent multiple earthquakes, then the ratio is not very meaningful unless the displacements represent the total geological offset (e.g. Cowie and Scholz, 1992). I think that the authors try to boil down some very complicated concepts by trying to relate the scarps to both a single event and the long-term geological evolution of the faults. Displacements in a single

[Printer-friendly version](#)[Discussion paper](#)

event can be highly variable along the strike of the fault, and may not always reflect the structure at depth. This may even be true over a few earthquake cycles. I think there is an interesting question to be addressed, that is, how do persistent variations in surface displacements (over a few EQs) relate to the structure of the fault?

Response: The SPARTA algorithm is designed to measure surface offset regardless of whether the scarp formed during a single or multiple events, whereas the interpretation and analysis of the results would differ significantly. In order to better set up this problem, we have added to both the introduction and discussion sections:

1) We have added the following sentences to the first paragraph of the introduction to introduce the range of possible scarp types that the algorithm could be used to study 'The scarps may be formed by a single earthquake or a small number of events, or represent the cumulative effect of numerous events over geological timescales. Linking the surface offset along the fault to information on the age of the features can provide information about the rupture and slip history on the fault (e.g., Wallace, 1968; Sieh, 1978; Zielke et al., 2012; Ren et al., 2016). For mature faults, it can be used to characterise long-term development by identifying structural segmentation (e.g., Watterson, 1986; Giba et al., 2012; Manighetti et al., 2015) and the presence of linking structures (e.g., Soliva and Benedicto, 2004; Nicol et al., 2010).'

2) To provide more background information on Malawi examples, we have added the following to the start of section 2 (2nd paragraph) ' In the southern MRS, the Bilila-Mtakataka fault (BMF) scarp breaks the surface along almost its entire length, a distance of 110 km (Jackson and Blenkinsop, 1997). Previous studies suggested that the scarp formed during a single earthquake (Jackson and Blenkinsop, 1997), but the morphology and geometry vary along strike (Hodge et al., 2018a) and are more typical of a large, structurally segmented normal fault which has experienced several previous earthquake cycles. (e.g., Schwartz and Coppersmith, 1984; Wesnousky, 1986; Peacock and Sanderson, 1991)

[Printer-friendly version](#)[Discussion paper](#)

We agree with the reviewer that slip-to-length analyses are only meaningful when applied to individual earthquakes. Our analysis of slip-to-length ratio is a test of the hypothesis that the scarps were formed by a single event and clearly states the assumptions made. The unusual slip-to-length ratios are then used as another line of evidence that multiple earthquakes were responsible. We have inserted some comments throughout the text to make this clearer, by explaining that assuming a single earthquake is an end-member, and by more explicitly interpreting the high slip/length ratios as indicating that the scarps likely formed by multiple earthquakes.

(2) I like the detailed discussion of the fault evolution and linkage, which is possible due to the high resolution analysis. How old are these faults, and what stage of growth are they in? The authors hint at this in the discussion by suggesting that the Thyolo and Muona faults are more mature than the Malombe faults, but could it just be that the Thyolo and Muona faults have experienced large earthquakes with more shallow slip, more recently?

Response: Little data are available on the faults in southern Malawi, which is part of the argument to study their geomorphology. We do, however, note that the Malombe fault is an intra-basin fault, whereas the other faults are in the immediate footwall of rift border escarpments (p. 5, lines 19-22). For balance, we also add a statement at the end of the discussion on fault evolution (end of section 7.2.3) to say that: In the absence of any dated earthquakes, however, we cannot rule out that the Thyolo and Muona faults have experienced a more recent earthquake, with surface rupture, than the Malombe and Bilila-Mtakataka faults, and therefore have the appearance of being more mature.

(3) It would be helpful to include more introduction to how fault scarps are treated in the literature. In other studies, the crest and base of scarps are not used, but instead linear regressions are fitted to offset features away from the scarp and projected to the fault. This method avoids problem of near-field scarp degradation and of proximal off fault deformation (e.g. Nissen et al., 2014; Cowie et al., 2017). It is not clear why the

[Printer-friendly version](#)[Discussion paper](#)

crest-base method has been used in this paper.

Response: As explained above to a similar comment from Reviewer 1, we did use regressions fitted to the offset surfaces either side of the scarp to calculate scarp height. We have now made this clearer, and apologise for confusion caused by the wording of the original methods description.

(4) I think your algorithm essentially is a way of smoothing out the non-tectonic signals in the data, but then if the scarps are the same size as any non-tectonic signal, they will also be removed (and therefore no scarp will be found in that profile). It would be helpful to the reader to state this more plainly, if it is true?

Response: We have added a comment to this effect to the discussion (first paragraph, section 7.1)

(4 cont) I also wonder if your algorithm is smoothing any off-fault deformation, which may be within 10s of meters of the scarp (e.g. Nissen et al., 2014; Gold et al., 2015).

Response: For discussion of off-fault deformation, see the response to reviewer 1, point 1

(5) Overall addressing the conclusion to the discussion on page 35, I think it is highly likely that the scarps represent multiple events given the extreme slip to length ratios you calculate, but that large magnitude earthquakes are definitely possible (even if they do not rupture the entire fault). Every time there is a new surface-rupturing earthquake, they seem to be even more complex (e.g. New Zealand and C Italy, 2016), so it is not surprising (though very interesting!) that there is some variability of the measured scarp heights, which may be even more difficult to unravel if they represent several earthquakes but not the total geological history of the faults.

Response: We think this comment is covered by the additional introductory paragraph added in response to comments from both reviewers, and by an additional statement near the end of the Conclusions which says: Our results suggest that each fault has

[Printer-friendly version](#)[Discussion paper](#)

likely formed through multiple events. However, earthquake ruptures are known to show complex variation in on- and off-fault deformation along-strike, and it is possible that along-strike variations in scarp height also reflect near-surface slip distribution in single earthquakes. It is also important to note that even if the current scarps formed in multiple events, large magnitude (M 7 - 8) earthquakes are possible in Malawi.

Specific comments:

(1) P2, Lines 20-28 hint at the uncertainties associated with DEMs, but these are not discussed formally in the paper. There could be at least one or two references in this paragraph on general DEM processing here or in the methods.

Response: We have added a sentence indicating the errors found in comparison of stereo-image DEMs with lidar 'ground truth', which essentially captures noise in the data (Citing Zhou 2015).

(2) P 7, L 1: Change Media to Median

Response: Thanks for the catch!

(3) Pg 8, lines 7-9 I'm not sure that I consider the profile to represent noise in the data, as the features mentioned to cause noise are real features, which are being reliably recorded in the DEM. I think throughout the manuscript there needs to be a distinction between analytical noise in data and real features in the landscape that may cause ambiguity in the scarp height.

Response: See response to Reviewer 1, we have replaced references to 'noise' with more specific reference to topographic, natural features that make identifying the scarp in the DEM difficult and/or ambiguous.

(4) How is the dashed grey line calculated on figure 2a-c? By eye to me, it looks like the manually picked crest of the scarp in 2a is too far to the right on the profile the scarp looks like it starts at 140 m actually closer to the automatic picks.

[Printer-friendly version](#)[Discussion paper](#)

Response: The main motivation for this algorithm and paper is that scarp location is open to interpretation, and so requires some unified, quantified, repeatable metrics. Investigators' choice of location may almost always be biased because of this selection of metrics-our algorithm makes this process quantitative and repeatable. We note that the reviewer's contention of our pick illustrates the issue we are addressing.

(5) Figure 4b is nicely summarised in the text on p12, lines 2-6. It would be helpful to do the same for Figure 4a, given the amount of work that went into the synthetic tests.

Response: Fig 4a is summarised in the previous paragraph (p11, lines 6-15 of the submitted version). While we appreciate the reviewer acknowledging the time spent generating these profiles describing each profile-filter combination in detail is rather repetitive. In fact, I think we removed this from an earlier draft of the manuscript in the interest of maintaining the readers attention. A really attentive reader could easily extract the corresponding information from Fig 4a given the description provided of Fig 4

(6) P12, L24-25: Is this analysis in this paper (e.g. do you mean on the real data), or planned future work?

Response: This is something that has been done, and we have rephrased accordingly 'Thus these are the optimal filters which we choose to employ in our natural measurements, using bin width and slope thresholds tailored to the local environment'

(7) P 18 - It is impressive that scarps with heights less than 5 m can be identified in SRTM!

Response: Yes, we agree. It can mainly be attributed to this ideal setting with low-relief, relatively level landscapes surrounding these faults. Naturally in higher relief areas such small scarps may not be evident in 30-m SRTM data.

(8) I think this has good implications for using this tool to identify active fault scarps.

Response: Absolutely, and to quantify them!

Discussion:

(1) P29, L18-23: I dont understand the logic behind the choice of average height for the Bilila-Mtakataka fault rupture (11 +/- 7 m). Why are the algorithm results not used? I understand that the rupture surveyed in this paper is not as complete as that from Hodge et al., 2018? Why not combine the manual picks from the parts of the rupture that were surveyed in the previous work, with the automatic picks from this paper, to have the most data integrated into the average displacement?

Response: This is a valid point. We have combined the findings from Hodge et al 2018 from 0 - 8 km (7 +/- 3 m) and 98 - 110 km (10 +/- 6 m), and the findings from this paper to give a measurement of 16 +/- 7 m for the entire scarp. This is a weighted average. The calculations in the paper have been adjusted accordingly.

(2) P29, L26-27: The 2 km uncertainty seems arbitrary, how was this chosen?

Response: Changed to 1% and updated calculations accordingly.

(3) P34, L3: this magnitude calculation is a maximum magnitude this must be made clear. Smaller magnitude earthquakes can also occur (and also be devastating). I would use the word estimated rather than found.

Response: We have adjusted language in this section to indicate that these are estimates of the maximum plausible magnitude of an earthquake that ruptures the entire fault plane. We have also adjusted the reported magnitudes of several historical quakes listed and now use the modern reanalysis of moments which are often smaller

Figures:

(1) Problem with the labels in Figure 2 d-f. The text references to the figure do not line up with what is written on the figure and I cannot tell whether the labels on the figure actually correspond to what is plotted (e.g. in the text (e) is listed as a moving mean, bin width 20 m but plotted as Lowess 40 m which is correct?). It looks like Figure 2f is actually the 40 m bin(Lowess?) because it is smoother. This makes the whole

[Printer-friendly version](#)[Discussion paper](#)

comparison even more confusing for a reader who is not familiar with the different filtering methods.

Response: Done

(2) It would also be helpful to show an example of the Savitzky-Golay filter in Figure 2, as it is discussed in section 3 and more readers will not be familiar with this type of filter.

Response: Done

(3) In Figure 4, is it possible to also plot the actual fits of the models to the synthetic profile on the first panel perhaps use the best fitting model, so the reader can get a more physical sense of how well the algorithm is working in the best case?

Response: Done

(4) Figure 6: It would be nice to see an unannotated version of this in the supplementary material, so we can see the scarp. Or even better, use a dashed line or arrows to indicate the trace of the scarp in Fig 6. We all like to see a nice fault scarp in a hi-res DEM.

Response: Done

(5) Figure 10: Top of the figure, bold black line is labelled as Manual TanDEM-X 12-m (Chapter 3) should it be Section 3?

Response: Yes, Corrected

Interactive comment on Solid Earth Discuss., <https://doi.org/10.5194/se-2018-38>, 2018.

Printer-friendly version

Discussion paper



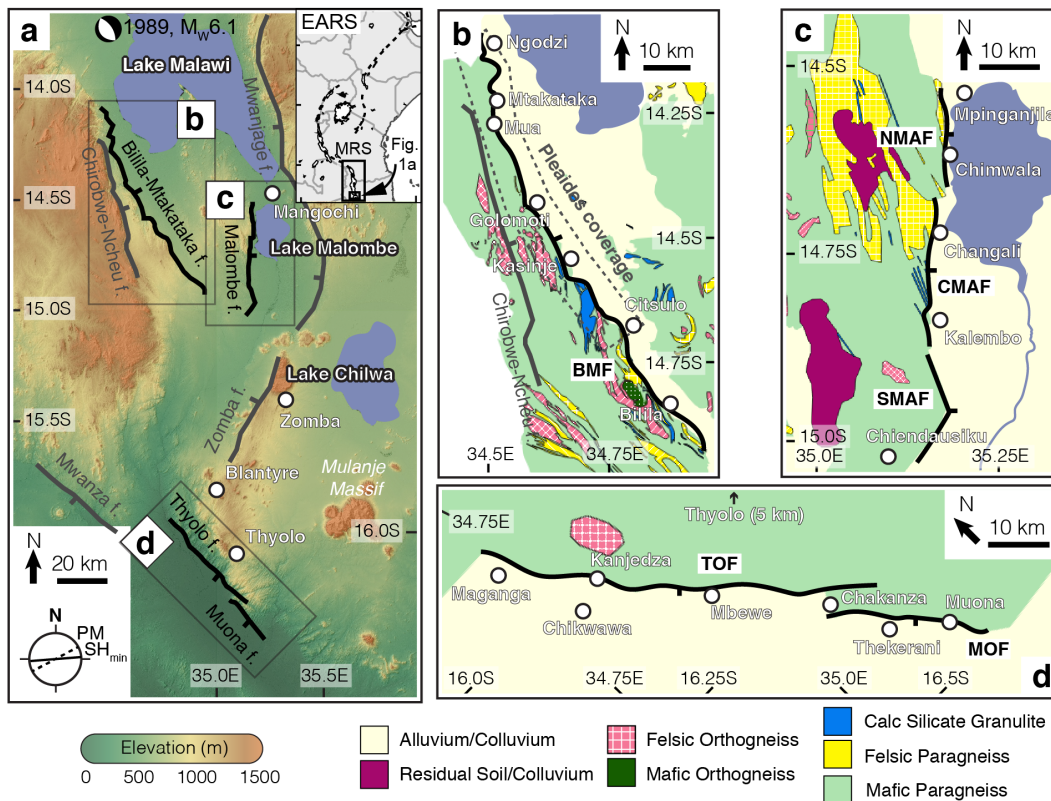


Fig. 1. Fig 1 with EARS inset

Printer-friendly version

Discussion paper



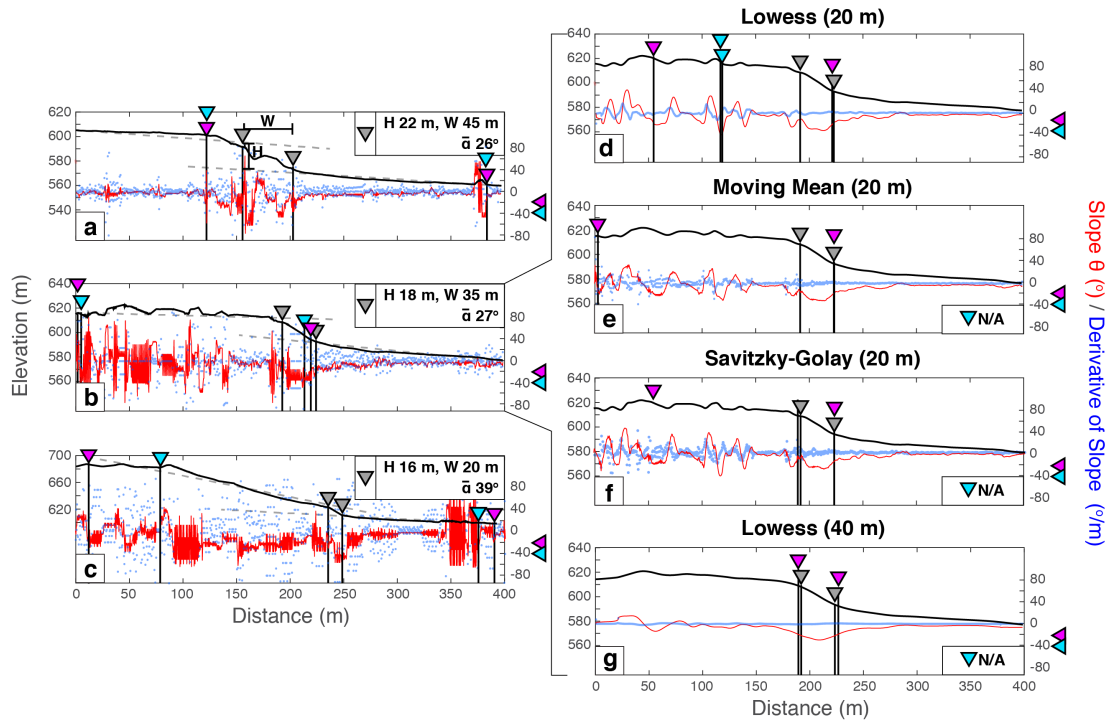


Fig. 2. Fig 2 with S-G filter example

Printer-friendly version

Discussion paper



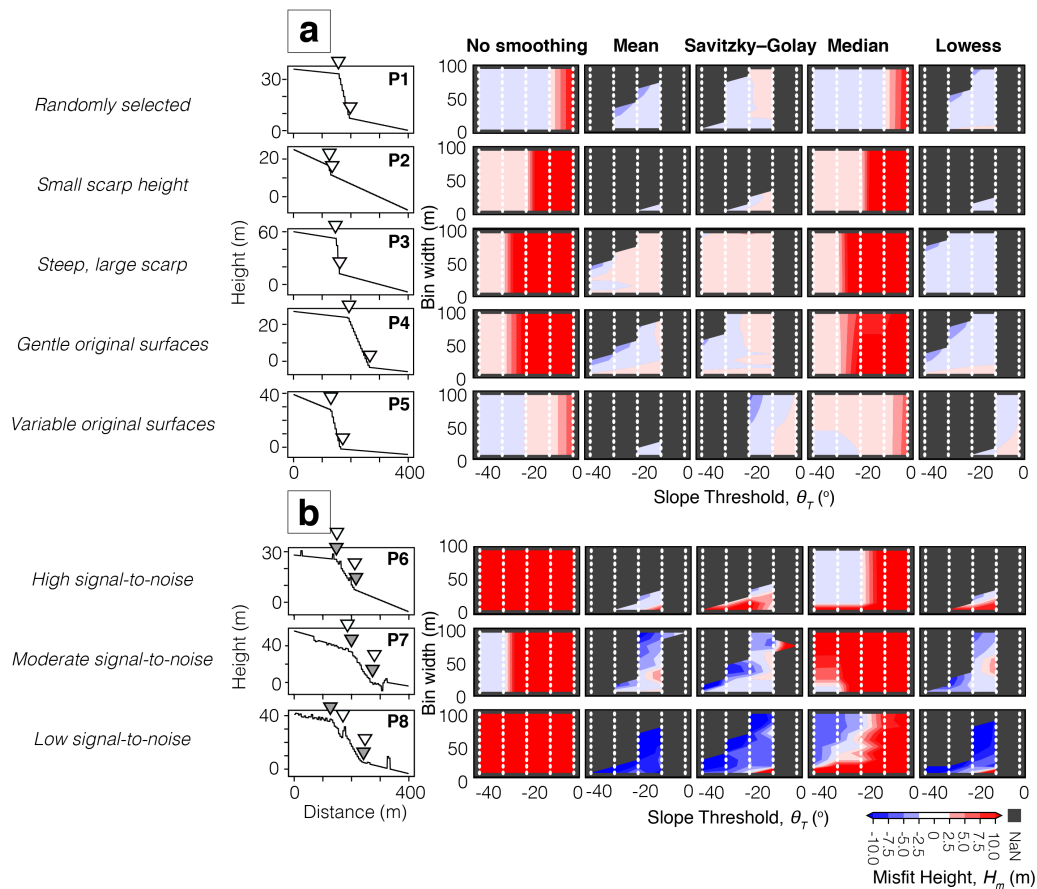


Fig. 3. Fig 4 with scarp markers

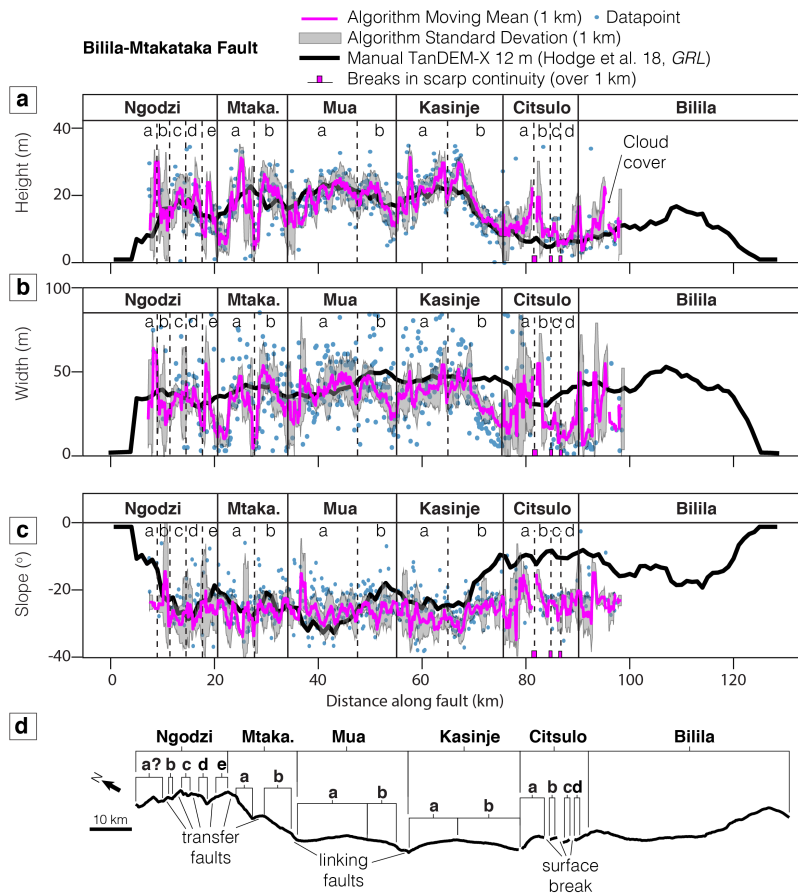


Fig. 4. Fig 10 with raw points

Printer-friendly version

Discussion paper

