



Lithospheric image of the Central Iberian Zone (Iberian Massif) using Global-Phase Seismic Interferometry

Juvenal Andrés^{1,3}, Deyan Draganov², Martin Schimmel¹, Puy Ayarza³, Imma Palomeras³, Mario Ruiz¹, Ramon Carbonell¹

¹Institut of Earth Science Jaume Almera (ICTJA), 08028, Barcelona, Spain

²Department of Geoscience and Engineering, Delft University of Technology, Stevinweg 1, 2628 CN Delft, The Netherlands

³Department of Geology, University of Salamanca, 37008, Salamanca, Spain

Correspondence to: Juvenal Andrés (jandres@ictja.csic.es)

Abstract.

The Spanish Central System is an intraplate mountain range that divides the Iberian Inner Plateau in two sectors – the northern Duero Basin and the Tajo Basin to the south. The topography of the area is highly variable with the Tajo Basin having an average altitude of 450-500 m while the Duero Basin presents a higher average altitude of 750-800 m. The Spanish Central System is characterized by a thick-skin pop-up and pop-down configuration formed by the reactivation of Variscan structures during the Alpine Orogeny. The high topography is, most probably, the response of a tectonically thickened crust that should be also identified by 1) the geometry of the Moho discontinuity 2) an imbricated crustal architecture and/or 3) the rheological properties of the lithosphere. Shedding some light about these features are the main targets of the current investigation. In this work, we present the lithospheric-scale model across this part of the Iberian Massif. We have used data from the CIMDEF project, which consists of recordings of an almost-linear array of 69 short-period seismic stations, which define a 320 km long transect. We have applied the so-called Global-Phase Seismic Interferometry. The technique uses continuous recordings of global-earthquakes (> 120° epicentral distance) to extract global phases and their reverberations within the lithosphere. The processing provides an approximation of the zero-offset reflection response of a single station to a vertical source, sending (near) vertical seismic energy. Results indeed reveal a clear thickening of the crust below the Central System resulting, most probably, from an imbrication of the lower crust. Accordingly, the crust-mantle boundary is mapped as a relative flat interface at approximately 10 s two-way travel time except in the Central System, where this feature deepens towards the NW reaching more than 12 s. The boundary between the upper and lower crust is well defined and is found at 5 s two-way travel. The upper crust has a very distinctive signature depending on the region. Reflectivity at upper-mantle depths is scattered throughout the profile, located between 13-18 s, and probably related with the Hales discontinuity.

Introduction

The Spanish Central System represents the most prominent topographic feature in Central Iberia. It is bounded by two major Tertiary – basins, namely the Duero Basin to the N and the Tajo Basin to the S, forming the Central Meseta. This mountain range extends in NE-SW direction for over 300 km, with peaks more than 2500 m in height, and is actively increasing its elevation in the order of 1mm/yr (Cloetingh et al., 2002), while the Central Meseta features an average altitude of 600-700 m.

The average elevation of the central Iberian Peninsula is the highest among those in the European continent. Current interest of Solid Earth Sciences, is focusing towards constraining and understanding topography as a whole, its changes



and their causes. Changes in topography are the expression of the characteristics of the lithosphere and processes that affect it: 1) on the surface (such as erosion and, therefore, climate), 2) within the lithosphere itself (such as intrusion of volcanics and magmas, faulting, rifting, compression, extension etc.), and 3) corresponding isostatic rebounds. How the crust responds to these processes is mostly controlled by its internal architecture and the distribution of its physical properties. Since the early 1990s, a number of multidisciplinary geophysical studies have been undertaken to characterize the crust and lithosphere in the Iberian Massif, first to the NW, and then to the SW, up to and across the Montes de Toledo. Detailed crustal and, sometimes, lithospheric structures have been delineated primarily from high-resolution controlled-source (normal-incidence and wide-angle) seismic reflection/refraction data (Pulgar, et al., 1995; Ayarza et al., 1998; Simancas et al., 2003; Carbonell et al., 2004a; Flecha et al., 2009; Palomeras et al., 2009, 2011; Martínez-Poyatos et al., 2012; Ehsan et al., 2014; 2015). However, there is a gap of seismic information at the Central System and surrounding basins.

Due to its usefulness, seismic interferometry (SI) has lately consolidated itself as a tool for lithospheric imaging. Recent studies have exploited earthquakes/moonquakes recordings (Ruigrok and Wapennar, 2012; Nishitsuji et al., 2016 a,b) to image lithospheric discontinuities such as the Moho (in the Earth and the Moon) or subducting slabs. These studies are based on a technique called Global-Phase Seismic Interferometry (GloPSI) (Ruigrok and Wapennar, 2012). GloPSI is a technique that retrieves P-wave reflectivity, coming from distant energy sources, below a single station by autocorrelating earthquake phases coming nearly as a plane wave with (near) vertical incidence angles. We have employed this technique in an almost linear array of 320 km length crossing the Central System and the Duero and Tajo Basins within the Central Iberian Zone. The resulting image provides new insights on the lithospheric structure of this intraplate mountain range which complement previous results.

Our interpretations are supported by models deduced from other nearby seismic datasets available. The results from normal incidence seismic profiles ESCIN-2, IBERSEIS-NI and ALCUDIA-NI (Pulgar, et al., 1995; Simancas, et al., 2003; Martínez-Poyatos et al., 2012) as well as the velocity information from the wide-angle datasets acquired as part of those experiments (e.g. IBERSEIS-WA and ALCUDIA-WA, Palomeras et al., 2009; Ehsan et al., 2015) are evaluated in our interpretation.

This work aims to contribute to the knowledge on the lithospheric structure and crustal thickness across the Central System, and to its relationship with the contrasting topography of the Duero Basin and Tajo Basin, constraints that are an asset to study the origin and evolution of the elevation and the deformation dynamics of the Iberian Peninsula.

Geological Setting

In the Iberian Massif (Fig.1) outcrops part of the Late Palaeozoic Variscan/Alleghanian Orogen of Europe. The latter was formed by the collision between pre-Mesozoic Laurentia/Baltica and Gondwana continents. The orogeny took place in two steps: 1) from Ordovician to Devonian times with the closure of the Rheic Ocean, that separated the continents, and 2) from Devonian to Carboniferous times where the continents were amalgamated along with other minor pieces like Armorica (Franke, 2000; Matte, 2001). The Iberian Massif exposes a complete section of the Variscan Belt formed by six units. External parts of the orogen are represented by the South Portuguese Zone (SPZ) to the S and the Cantabrian Zone (CZ) in the N, whereas the internal zones are the Ossa-Morena Zone (OMZ), Galicia-Tras-os-Montes Zone (GTMZ), Central Iberian Zone (CIZ), and West-Asturian Leonese Zone (WALZ) (Juvivert, et al., 1972). From these domains, the CIZ, WALZ, and CZ represent continental portions of a passive margin along Gondwana before the Variscan orogeny. Overlying the CIZ, the GTMZ is a relic of the Rheic Ocean formed partly by ophiolites. The OMZ is interpreted as a



85 ribbon continental domain that drifted to some extent from Gondwana. Finally, the SPZ is interpreted as a fragment of Avalonia (Fonseca and Ribeiro, 1993; Tait et al., 2000).

The CIMDEF seismic profile is located within the CIZ although, the latter is overlain by Cenozoic basins to the N and S of the profile. The CIZ is the largest subdivision of the Iberian Massif and has two distinct zones (Diez Balda et al., 1990).
 90 To the N it is characterized by high-grade metamorphism and high deformation (Barbero and Villaseca, 2000) and a vast volume of Carboniferous granites, most of them outcropping (Bea et al., 2004). The southern part is characterized by less deformed rocks, featuring NW-SE trending upright folds and faults, and a much more moderate volume of granites.

The profile crosses three main geological domains within Central Iberia, namely the Central System, the Duero and Tajo
 95 Basins. The Central System is an intraplate mountain range characterized by a thick-skin pop-up and pop-down configuration with an E-W to NE-SW orientation. It was formed during the Cenozoic Alpine compression of the Iberian Peninsula and is composed by uplifted Variscan basement (Vegas et al., 1990., de Vicente et al., 1996, de Vicente et al., 2007). It is divided into two major areas by a set of almost N-S faults. The western sector is called Gredos and the eastern side is Guadarrama-Somosierra. The outcropping materials are mainly Variscan granites in the western sector with minor
 100 outcrops of metamorphic rocks, while the eastern zone is mainly composed by metamorphic rocks with minor outcropping granites. The granites of the western sector correspond to the Avila Batholith which is a vast association of igneous rocks. The current knowledge of the crustal and lithospheric structure of the Central System comes mainly from geophysical studies such as seismic data (Suriñach and Vegas, 1988, Diaz et al., 2016) and inversion and forward modelling of potential-field data (Tejero et al., 1996; De Vicente, et al., 2007; Torne et al., 2015). These studies have found a crustal
 105 thickness in the range of 31 km to 35 km, showing a thickening underneath the Central System with respect to the surrounding basins. Our study area is located in the western part of the Central System, i.e. the Gredos sector. Its structure corresponds to a main pop-up of about 100 km across the strike which can be subdivided in four short-wavelength pop-ups, of about 10-20 km, and three pop-downs framed into the pop-ups. The Duero Basin corresponds to the foreland basin of the Cantabrian Mountains to the N as well as the foreland basin of the Central System to the S. The Tajo Basin is
 110 located to the S of the Central System and the contact between them is marked by a thick-skinned thrust fault that fades out to the W. Approximately at the longitude of the CIMDEF profile, this thrust fault is substituted by a set of faults located slightly to the N and hosting the Tietar river (Fig. 2 in De Vicente et al. 2007).

The CIMDEF experiment

115 The data used in this study were acquired within the CIMDEF project. The set-up consisted of a three-stage deployment. The first part of the profile was recorded between May and June 2017 by 24 short-period stations equipped with 2-Hz three-component geophones. The second stage was acquired between February and April 2018 and consisted in a deployment of 15 stations, while the third deployment was undertaken between July and September 2018 and 30 new stations were installed using the same configuration of geophones and data-loggers for all deployment stages. The data
 120 were acquired in continuous recording at 250 samples per second (sps) during periods ranging from 28 to 60 days. The stations were installed along an almost linear NW-SE array with an average interstation spacing of 4.8 km, covering a total length of 320 km (Fig. 1). For every station, at least 28 days of continuous recording is available although in the northern and southern part of the profile, almost two months of data are available. For the processing, we select the vertical-component of global earthquakes (Fig. 2) with $MW \geq 5$ from the USGS catalogue. The limited deployment time
 125 of the experiment determined the choice of $MW \geq 5$ in order to allow the use of more sources. A total of 81 earthquakes



were selected (Table 1): 17 for the central deployment, 38 for the southern segment and 26 for the northern part of the profile.

The selection of the beginning of the time window to be used was based on the theoretical travel time of the phases calculated by the ak135 model (Kennett et al., 1995). We visually inspected the recordings and selected phases with a high signal-to-noise ratio. The time-window is set to start 30 s before the onset of specific phases of interest (e.g., PKiKP or PKIKP) and to end 300 s after the onset and before the onset of the first S-wave phase.

Global-Phase Seismic Interferometry

The GloPSI technique uses body-wave global phases that have travelled through the core and whose energy arrives at the surface nearly vertical. These seismic phases are PKP, PKiKP, and PKIKP, produced by earthquakes at $>120^\circ$ of epicentral distance (Fig. 2). When arriving at the station, the phases and their reverberations in the lithosphere are used as the input data. In general, these arrivals are nearly plane waves in the mantle and have a slowness lower than 0.04 s/km.

The reflections produced by the phases and their reverberations can be retrieved using SI. The methodology is based on the 1D derivation for an acoustic medium of Claerbout (1968) where reflectivity is retrieved by autocorrelation. This theory was latter extended to 3D inhomogeneous media by Wapenaar (2003) and adapted to retrieve body-waves from global earthquakes by Ruigrok and Wapenaar (2012). The GloPSI technique relies on the application of autocorrelation of every earthquake and stack over sources to retrieve the pseudo zero-offset reflections response below a station from a virtual source that radiates energy nearly vertically down. Stacking over the correct illumination range ensures cancelation of spurious events and enhancement of stationary events. Thus, we calculated the back azimuths of the selected events (inset in Fig. 2). Despite the constraint that the distance $> 120^\circ$ implies in terms of availability of sources, the illumination is well covered, thus ensuring a good stacking of the resulting autocorrelations. Limitations of the methodology are related with earthquake distribution and quantity and with the internal structure of the crust. As GloPSI uses nearly vertical incident energy, reverberations from steep dipping structures below the station would not be retrieved. However, the lack of imaged reflectivity of such structures can be used to interpret their presence (Nishitsuji et al., 2016a). The methodology is extensively covered in Ruigrok and Wapenaar (2012), therefore the reader is referred to the paper for further details.

Data Processing

The methodology we employ for the processing of the earthquakes recording includes pre-processing and construction of stacked autocorrelograms of the vertical component. We base our processing steps on linear autocorrelations and phase-weighted stacks (tf-PWS) (Schimmel and Gallart, 2007). The tf-PWS is based on the non-linear theory where the linear stack is weighted by the time-frequency phase. This procedure enhances coherent signals independently of their amplitudes. The time-frequency phase stack is written as

$$c_{ps}(\tau, f) = \left| \frac{1}{N} \sum_{j=1}^N S_j(\tau, f) e^{i2\pi f \tau} \right|^p \quad (1)$$

where $c_{ps}(\tau, f)$ is the time-frequency phase coherence, and $S_j(\tau, f)$ is the S-transform. Then, the tf-PWS is calculated by multiplying the phase stack with the S-transform of the linear stack as,

$$S_{pws}(\tau, f) = c_{ps}(\tau, f) S_{ls}(\tau, f). \quad (2)$$

Finally, the inverse S-transform is applied to convert the stack from the frequency domain to the time domain.



The pre-processing applied to all selected time-windows consists in first, deconvolving the instrument response from the signal. Then, the data is decimated from 250 sps to 50 sps in order to reduce computing time. The next step consists in band-pass filter the data to restrict the frequency bands to those where we expect the target information to be found. We applied a broad band-pass filter of 0.1-2 Hz after computing the power-spectral density for different magnitude earthquakes (Fig. 3). Subsequently, we apply SI by autocorrelation to each selected phase (transient source). To help the correct stacking, the autocorrelations are normalized by their energy. This step aids the summation process as each phase could have a different spectral balance, thus hindering an optimal stacking. The resulting stack is filtered between 0.7-2 Hz as low frequencies offer low resolution and they (< 0.7 Hz) are influenced strongly by the microseismic noise (Fig 4).

As a consequence of the autocorrelation process, a strong arrival at $t = 0$ is created, representing a smeared Dirac delta function at time 0 s (Claerbout 1968; Wapenaar, 2003), dominating the earlier part of the trace. Two methodologies have been tested to reduce this effect: a) deconvolution of the wavelet around 0 t (the virtual-source time function) extracted from the average of all autocorrelations per event and phase; b) subtracting the average time function of all the traces from every individual autocorrelation. Both processes partly helped to eliminate the influence of the virtual-source time function but did not deliver optimal results. For the sake of the interpretation, we have preferred to mute the virtual-source time function, as the previous mentioned techniques have not been entirely successful.

The entire processing workflow of the earthquake recordings yields a pseudo zero-offset section with the reflection response of the lithospheric structure below all stations (Fig.4). Further post-processing steps, as elevation correction, have been considered but discarded. The maximum elevation difference in the area is approximately 1 km, that assuming an average crustal P-wave velocity of 5.5 km/s, would represent 0.36 s, which would not modify the possible interpretation of reflectors at lithospheric scale.

Results

We present a P-wave reflectivity profile obtained by stacking autocorrelograms from phases of global earthquakes (Fig. 4). The section crosses, from NW to SE the Duero Basin (DB), Central System (CS), Tajo Basin (TB), and also the Toledo Mountains in the Central Iberian Zone (CIZ) (Fig. 1), and can be regarded as an image of the reflectivity of the upper lithosphere down to 30 s two-way travel time (TWT).

We have applied a time-to-depth conversion to display the estimated depth at which we obtain reflectors. The conversion is applied to the time axis to the left and is displayed on the right axis of Figure 4, but the velocity model is not too certain, thus the depth serves only as a reference. This conversion uses the velocity profile of shot 3 from the ALCUDIA-WA experiment, down to Moho depths, (Ehsan et al., 2015) which is fairly close to the southern end of our profile but at an offset of around 20 km (see Fig. 1). Below the Moho, a constant velocity of 8 km/s has been used in the conversion. In areas with a sedimentary cover as the Duero Basin in the northern part of the profile, the depth conversion might not be accurate because of the lower velocity in sediments, thus overestimating the real reflector depths. In addition, in areas where the crust is thicker, the resulting depth would also be overestimated as we might have used mantle velocities in crustal areas.

The relative long distance covered by the profile and the relatively close station spacing ($\approx 4,8$ km) ensure a high lateral resolution of the lithospheric structure of the study area. The section shown in Fig. 4 shows alternating bands of high and low reflectivity and also distinct areas of high and low frequency. The most conspicuous observations are: 1) a high-



reflectivity band from the surface down to 9.5-12 s TWT, with much lower reflectivity below; and 2) another band of high-amplitude and low-frequency arrivals in the southern half of the profile above 5.5 s TWT. This band continues to the N with slightly higher frequency and lesser amplitude arrivals that are a slightly shallower. Also, apparently random reflectivity appears below 12 s TWT.

The first of the above mentioned reflective layers represents the highly reflective continental crust which can be easily separated from a more transparent mantle in this part of the CIZ and is one of the keys to calculate the crustal thickness. Among the reflectors found within the crust, a marked package of arrivals is found between 3 and 5.5 s TWT throughout the profile. This displays an almost flat structure underneath the Central System, while thinning towards the N and S of the profile. As seen in the wiggle image in Figure 4, this shallower band of reflectivity presents a different signature in the three domains, the Central System, the Tajo Basin and the Duero Basin, displaying much lower frequencies in the Central System. Accordingly, to the N and S, the reflector is defined by higher-frequency wiggles, which become very coherent to the S. Moreover, in the first 70 km of the profile this band of reflectivity features lower amplitudes and exhibits less continuity while showing a similar waveform to the wiggles further S. The bottom of this thick band of reflectivity defines a discontinuity at an average depth of 5.5 s TWT. Based on the characteristics of this feature, we can state that this discontinuity is shallower, sharper, and better defined in the northern and southern parts of the profile, although it covers the entire section. We interpret this discontinuity as the upper crust-lower crust boundary. Thus, the upper crust features a homogeneous (low frequency) signature in the Central System and is probably thinner and more heterogeneous to the N and S.

The lower crust features a high and heterogeneous reflectivity that is interpreted as the seismic expression of a laminated layer, as seen in the ALCUDIA-NI experiment (Martínez-Poyatos et al., 2012; Ehsan et al, 2014). Within this lower band of reflectivity, differences also exist between the central-southern part and the northern sector. Below the Duero Basin, a less reflective lower crust exists up to 135 km of distance, while below the Tajo Basin and the Central System, the reflections have higher amplitudes overall indicating higher impedance contrasts in that area and a coherent response regardless of the differences at upper crustal levels.

The crust-mantle discontinuity is marked by a transition from high-amplitude reflections to a much lower-amplitude seismic signature; it is difficult to define a sharp Moho discontinuity with this dataset. This transition features an increase in seismic impedance and is located between 9.5-12 s TWT (peak wiggles in Fig. 4). The Moho is shallower and more difficult to define in the northern sector where it appears above 10 s. It seems rather flat until it starts deepening to the SE, at 120 km distance to the N of the Central System. Below the Central System a clear step is found, differentiating the crust-mantle boundary in two parts. From the north, the gentle deepening continues until 180 km distance, just below the northern edge of the Central System. At this point, the deepest Moho position is found below the highest elevation of the mountain range, where two traces show high-amplitude reflectivity at 12 s TWT. The Moho shallows again southwards until 230 km distance, where it becomes almost flat again, featuring depths of 10 s TWT until the end of the profile.

As expected, the mantle is more transparent than the crust and reflections are scattered and less abundant. In general, the northern sector is characterized by slightly higher reflectivity than the central and southern area. A reflection at 13-14 s TWT is visible at different places along the profile. It features higher amplitudes under the northern part of the Duero Basin, then fading away and being visible again at 50 km, and along an interval between 80 and 110 km distance. This



250 reflector might continue below the Central System with two conspicuous reflections at 16 s. The reflector can be followed
up again below the Tajo Basin and Toledo Mountains where it gradually shallows from 14 to 13 s TWT. Below this
interface, another discontinuous reflector is found between 19-20 s TWT. As before, this feature is more visible under the
Duero Basin and only clear again at a distance of 230 km. At latter times, there are no clear arrivals with high enough
continuity as to define a reflector (Fig. 4).

255

Discussion

In this work, we present the first reflectivity profile of the lithosphere under the Central Iberian Zone, in the Iberian
Massif, by means of SI applied to global-earthquake data. The resulting image (Fig. 5) provides key insights to understand
the internal structure and tectonic evolution of the Central System and the surrounding sedimentary basins. In the
260 following sections, we analyse and address the nature of the crust and mantle reflectors and their possible origin. Our
interpretation approach relies on the identification of arrivals which have lateral coherence, along with similar waveforms.
In general terms, good lateral reflectivity is retrieved along the profile where clear crustal reflectors can be identified.
Although in this work we use low-frequency global phases, the crust can be divided in upper and lower crust, both
coinciding with the main reflectivity zones seen in the ALCUDIA-NI profile, which uses a higher-frequency data set (8-
265 80 Hz). The upper crust extends from 0 to 5.5 s TWT in average (0-15 km), while the lower crust goes down to 9.5-12 s
TWT (29-38 km). Therefore, two crustal-scale discontinuities are identifiable: the base of the upper crust at 5-5.5 s TWT
and the crustal-mantle discontinuity between 9.5 and 12.5 s TWT. Finally, the lithospheric mantle covers the rest of the
profile from depths of 29-39 km and also features two discontinuities at 13-14 s TWT and around 19-20 s TWT.

270 Upper Crust

The upper crust observed as part of the CIMDEF experiment (Fig. 5) is identified between 3-5.5 s TWT (7-15 km) and is
characterized by a package of reflectivity with high-amplitude events and, in places, rather low frequencies. However,
this package shows some differences along the profile. Below the Duero Basin two different types of reflectivity are
found. From 0 to 70 km distance, relatively low-amplitude reflectivity with higher frequencies is observed. Then, higher
275 amplitudes appear up to the Central System location. There, the reflectivity has much lower frequencies and even higher
amplitudes. The signature changes again below the Tajo Basin and the Toledo Mountains where higher frequencies are
present again and high amplitudes are exhibited. These differences in the reflectivity could be attributed to lithological
changes associated to the outcropping geology.

280 The upper crustal image observed in this section allows us to establish a correlation between the reflectivity signatures
and the Carboniferous-Permian magmatic zonation of the Iberian Massif (Simancas et al., 2013). According to these
authors, the magmatism in the Iberian Variscides can be divided in four areas depending on its characteristics. From N to
S, the CIMDEF profile crosses zones I, II, and III. Zone I includes the Cantabrian and Asturian-Leonese zones, is
characterized by a negligible volume of post-orogenic granitoids; and corresponds to the first 70 km of the profile. Zone
285 II has large volumes of Carboniferous granitoids (Bea, 2004) related to recycled metasediments from the continental crust
(Villaseca et al., 1998, Bea et al., 2003). In this context, crustal thickening and extension has been proposed to support
the high production of granites (Pérez-Estaún et al., 1991; Martínez Catalán et al., 2014). This area is crosscut by some
220 km of the profile. The final zone intersected by the experiment, has much less abundant granitoids than the previous
zone and represents the last 80 km of the southern end of the profile. The boundary between zones I and II coincides with
290 a reflectivity change at upper crustal level in our profile, as the first 70 km feature a lower-amplitude signature, more
heterogeneous reflectivity and higher-frequency events than the rest of the profile. Within zone II, another change of



signature is found around 140 km distance, where a high-frequency/high-amplitude reflectivity is followed by a low-amplitude/high-frequency reflectivity. This transition lies slightly to the N of the contact between the Tertiary sediments of the Duero Basin and the outcropping granitoids of the Central System. Despite our profile cannot constrain the uppermost part of the upper crust, the relationship between surface geology and our results is evident, and we assume that the main contacts observed at the surface are at the same locations as observed here at 3 s TWT (8-9 km). Accordingly, we suggest that the extension of granites in zone II can be prolonged to the N of the Central System, even though they do not outcrop as they are covered by the Duero Basin sediments. In this context, it can be stated that below the Central System the upper crust is completely formed by granites down to 5.5 s TWT, as they are massive lithologies that do not feature sharp impedance contrasts at the scale of the sampling waves. Zone III is imaged by the upper crustal reflectivity in the Tajo Basin and further S, which depicts the seismic response of metasediments featuring vertical folds accompanied by few granites, thus providing scarce impedance contrasts visible to high-frequency waves and giving a high-amplitude but relatively low-frequency response. As a summary, it can be inferred that the seismic signature of the upper crust sampled by the CIMDEF experiment is strongly influenced by the overall differences between the seismic response of igneous rocks and (meta)sedimentary rocks, being the former the source of a low-frequency homogeneous seismic signature.

Lower Crust

Below the upper crust, the CIMDEF experiment, shows a highly reflective lower crust along most of the central segment. However, lower amplitude reflectivity is found in the first 130 km to the N. Also, from the southern border of the Central System to the end of the profile, amplitudes at a lower-crustal level are somehow lower than underneath the Central System.

Although GloPSI has low resolution when compared to the active-source vertical-incidence reflection data, a similar reflective pattern is again identified between both types of datasets. The lower limit of the upper crust correlates well with a mid-crustal discontinuity identified in the IBERSEIS-NI and ALCUDIA-NI datasets to the S (Simancas et al., 2003; Poyatos et al., 2012; Ehsan et al., 2014) and also found in the ESCIN-2 and ESCIN-3.3 profiles to the N (Pulgar et al., 1996; Ayarza et al., 1998). This interface is present from the SPZ, the OMZ, and the southern part of the CIZ as well as in the WALZ and in the northern border between the Duero Basin and the Cantabrian Mountains. It has been regarded as the Variscan brittle/ductile transition (Simancas, et al., 2003; Palomeras, et al., 2009; Martínez-Poyatos, et al., 2012; Ehsan, et al., 2015) although ductile Variscan deformation is widespread at outcrop level in these areas, i.e. in what is supposed to be the fragile part of the Variscan crust. From a seismic point of view, this interface characterizes the division between the top of a highly laminated lower crust and a more transparent upper crust. Furthermore, this boundary separates areas with different patterns of deformation suggesting that the former might act as a detachment. Estimations of shortening at upper- and lower-crust levels, suggest that this detachment might have accommodated most of the deformation (Martínez-Poyatos, et al., 2012; Simancas et al., 2013) although these estimations fail to control the amount of ductile deformation and the part of the latter maybe previous to the Variscan Orogeny at lower crustal level.

As in the previous datasets, in the CIMDEF profile this boundary is not identifiable by a marked reflection but rather by a change in the reflectivity signature between the upper crust and the lower crust. In our profile (Fig. 5), we have also imaged how this interface continues to the north at approximately the same depth (5 s TWT). The existence of this discontinuity, that represents a boundary between different deformation patterns, indicates that the upper and lower crust should have had some degree of decoupling during its tectonic evolution. If this boundary were Variscan in age, its



original position could have been modified by the late Variscan igneous activity affecting the CIZ, mostly the Central
 335 System area. This may be the reason why it appears slightly deeper in the central part of the profile. In the southern border
 of the CS, this interface could be continuous, but also could be imbricated as an effect of the shortening, as imaged in
 Figures 5 and 6. Below the southern border of the CS, there is a small area where the high-reflectivity pattern of the lower
 crust seems to be above that of the upper crust thus suggesting the existence of this imbrication. Nevertheless, to confirm
 this feature, higher-resolution studies are needed.

340 There are evidences of a thickening of the crust in the central and northern part of the CIZ during Carboniferous times.
 This led to the late extension (Pérez-Estaún et al., 1991; Díez Balda et al., 1995, Martínez-Poyatos, et al., 2012) during
 Permian time and to widespread magmatism. The presence of high-frequency reflections at lower crustal levels below the
 Central System evidence that here, not all the crust melted during the Variscan Orogeny in that zone. Massive granitoids
 345 do not produce reflections but rather a transparent low-frequency response. We infer then, that the lower crust below the
 Central System was not entirely affected by crustal melting as intense reflectivity remains. Northwards, below the Duero
 Basin, the lower crust is less reflective. To explain this difference, two scenarios could be invoked. First, the presence of
 a partly melted lower crust that would imply the onset of extension and melting of the area. However, the outcropping
 rocks present a low metamorphic degree which is incompatible with this scenario. Second, the pre-Variscan lower crust
 350 of this area had a slightly different composition and deformation compared to its continuation to the S and N. These
 features might had translated in a different response to deformation during the Variscan compressional and extensional
 stages. Last but not least, the northern part of the CIMDEF profile lies in the Duero sedimentary basin, where Tertiary
 and Quaternary sedimentary layers might have absorbed part of the seismic energy thus attenuating the corresponding
 amplitudes. This hypothesis is supported by the fact that, in general, amplitudes are lower in the northern part of the
 355 profile.

The most prominent feature in the profile is the crust-mantle boundary (Fig. 5). The Moho topography of the Central
 System has been suggested, by gravity modelling (De Vicente et al., 2007) and seismic receiver functions (RF) (Mancilla
 & Diaz, 2015), to have a gentle bulk in a synform-like structure of long wavelength, increasing its thickness up to 2-3 km
 360 with respect to its surroundings. The crust-mantle discontinuity here is not presented as a unique and sharp reflection, but
 by a change in the reflectivity pattern instead. We have interpreted the discontinuity (Fig. 5) at 9.5-12 s (29-38 km), based
 on the position of a boundary between a highly reflective crust that passes to an upper mantle characterized by low-
 reflectivity and small-amplitude events. In normal-incidence seismic data, the contrast between high and low reflectivity
 (or transparent) has been used as the criteria to define the position of the Moho (Carbonell et al., 2013). This reflectivity
 365 boundary is irregularly distributed, being shallower to the N, around 9.5-10 s (29 km) and deepening in the central part
 of the profile, although shallowing again to the S. Accordingly, below the highest peak of the Central System, an overlap
 of two branches of the Moho is found (Fig. 5), where the deepest set of reflectors is found at times as deep as 12 s TWT
 (38 km). This package of reflectivity is limited to the recordings of two stations and covers a distance of ≈ 15 km, while
 the whole thickening covers an area of ≈ 100 km, going from the southern border of the Central System and to the southern
 370 part of the Duero Basin. The fact that the presence of these deeper reflections is limited to 2 stations might not be a
 structural feature, but related with the methodology itself. Because GloPSI uses near vertical incident energy, it is
 insensible to steeply tilted structures, as the reflection of these cannot be recorded below the same station. Thus, if a steep
 angle is found in a structure below the Central System, our results would not recover it. Furthermore, the frequency
 content of such distant earthquakes is quite low, limiting the vertical resolution that can be resolved. As a consequence,
 375 other reflections shallower than those two already retrieved but deeper than the Moho, between these two and the S limit



of the CS, might not be resolved with the frequency used in our study, or the signal could be mixed with that of the lower crust.

In Figure 5, we have interpreted this feature as the result of the lithospheric compression that occurred during the Alpine
 380 Orogeny, which has further modified the structure of the Variscan crust, triggering an imbrication and thickening of the
 lower crust that can be only partly observed with this dataset. This structure would be similar to the imbrication of lower
 crust identified in the Cantabrian Mountains as a result of Alpine compression (Pulgar et al., 1995; Teixell et al., 2018,
 among others). Although in our case the observation of this underthrusting is limited by the number of recording stations,
 a clear thickening of the crust below the Central System can be observed anyway. The northern boundary of this crustal
 385 thickening reveals no apparent correlation with major outcropping structures. However, the southern boundary of the
 thickened crust lies close to the south Central System (SCS) thrust and to the fault system that defines the Tietar river
 basin (Fig. 6a and b). A prolongation of this lower crustal imbrication into the upper crust could project in any of these
 thrusts and would imply that the whole crust is in fact somehow imbricated, giving us additional insights on the origin of
 the low topography of the meseta to the S of the Central System (Fig. 6b). However, this would require that the identified
 390 Variscan mid-crustal detachment did not work as such during the Alpine compression (as shown in Fig. 6a), allowing
 compressive structures to affect both, the upper and the lower crust simultaneously. In addition, seismic profiles
 crosscutting the Madrid Basin and the SCS thrust to the NE of our profile (de Vicente et al., 2013), do not show
 underthrusting of sediments of this basin, indicating that if this tectonic feature exists, it is probably related to the Tietar
 River fault system. In any case, the resolution of this data set does not allow us to identify steeply dipping crustal features.
 395 Higher-resolution solutions and estimations of the shortening at upper and lower crustal levels should be used to support
 any of these hypothesis.

Figure 6 shows a sketch of the interpretation of the CIMDEF GloPSI profile overlapped with the Moho geometry deduced
 from gravity inversion (Torne et al., 2015), and a compilation of active-source and RF Moho depths (Diaz et al., 2016).
 400 Also, the geometry of the inferred imbrication, involving just the lower crust (Fig. 6a) or the upper and lower crust (Fig.
 6b) is included. In general, there is a good agreement between the three models, with only small mismatches in the root
 area. To the S, a similar thickness of around 32-34 km is depicted from the different models. To the N, the model
 presented in this paper shows a thinner crust of around 30 km while the two other models present thickness of 32-33 km.
 This mismatch, which is reduced along the profile towards the northern border of the CS, could be due to the existence
 405 of low-velocity sediments in the Duero Basin that lead to errors in the time to depth conversions. The differences below
 the CS affect the depth as well as the geometry of the crust-mantle interface. The Moho discontinuity in Diaz et al. (2016)
 presents a rather flat geometry, depicting a little, 1-km-thick root. The results from gravity inversion, while being closer
 with our results regarding crustal thickness, are highly influenced by the inclusion of the topography in the inversion
 procedure. Accordingly, the crustal thickening starts further to the S, showing a progressive thinning in the area where
 410 our crustal thickness is maximum. This implies that the model based on gravity inversion relates the root with local
 isostasy whereas our model infers a tectonic influence in the geometry and position of the crust-mantle boundary. In any
 case, the resolution of the datasets and the limitations of the GloPSI technique in imaging steeply dipping interfaces
 allows the observed small differences in the results of different techniques.

415 The mechanism that gives rise to the uplift and crustal thickening of the Central System is an ongoing discussion where
 two main hypotheses are proposed. First, several studies (Cloetingh et al., 2002; de Bruijne and Andriessen, 2002; de
 Vicente et al., 2007, de Vicente et al., 2018) have suggested lithospheric folding of Iberia to be the driving force. They



base their hypothesis on gravity and analogue modelling, basin infill, and structural analysis of outcropping geology. They propose a model where the crust has buckled entirely, and deformation is represented in the upper crust by the formation of pop-ups that uplift the basement, while ductile deformation is present in the lower crust. The folding wavelength in continental Iberia is calculated to be between 150 to 250 km (Muñoz-Martín et al., 2010). The second hypothesis proposes that a detachment level runs from the Betics to the S or the Pyrenees to the N (Quintana et al., 2015). This solution would mean that a simple shear with a detachment at some crustal level would accommodate the shortening and provide the uplift of the Central System. Our reflectivity image provides insights that might shed some light on its structure. Despite the presence of a clear thickening under the Central System, which affects the upper crust, the lower crust is not much bulked but it seems tectonically imbricated below the Central System. Furthermore, the wavelengths proposed for the lithospheric folding should be visible in our array length. Furthermore, the thickening of the crust under the Central System seems to be the only remarkable curvature within the crust. The second hypothesis is mainly based on the idea that the Central System has a small crustal root. This statement is based on the current geophysical knowledge of the area which includes gravity modelling (de Vicente et al., 2007), gravity inversion (Torne et al., 2015), and receiver-function studies (Mancilla & Diaz, 2015). Considering our results, the crustal root is not as small as previously seen in other geophysical datasets, and at the deepest point it might define an offset of 6-7 km. We suggest that the crustal root should have formed during the Alpine orogeny by the compression of Africa in NW direction. Consequently, we infer underthrusting or stacking/imbrication of two layers of (lower) crust as the formation mechanism. This might have accommodated much the shortening produced during the compression. If the entire crust (and not just the lower crust) were imbricated, this hypothesis could further explain the elevation difference between the Tajo and Duero Basins, as the latter is isostatically supported by a thicker crust and the former is underthrusting.

Upper mantle

The upper-mantle reflections are scattered within the profile at two main levels (Fig. 5) - between 13-14 s TWT and between 19-20 s TWT. Both reflections have low lateral continuity and, although they are visible almost throughout the entire array, the lack of continuity among patches of reflectivity hinders their interpretation and definition of their geometry. Both sets of reflectivity are nearly parallel except below the Central System, where the first reflection deepens while the second does not. At these depths, 45-55 km for the top reflection and 70-75 km for the bottom one, other similar reflectors have been found in southern Iberia. In the IBERSEIS profile, a zone between 61 and 72 km depth was modelled, corresponding to what the authors interpreted to be the Hales discontinuity (Ayarza et al., 2010). The same discontinuity has been imaged by the ALCUDIA-WA datasets (Palomeras et al., submitted). The discontinuity, modelled by wide-angle seismic data, is proposed to be related to the mineral phase transition from spinel-lherzolite to garnet-lherzolites (Hales, 1969). To compensate for the low reflection coefficient of this phase change and to explain the thickness and high reflectivity of this feature, an area of layering or lenses with different ratios of spinel/garnet and thickness that allow constructive interferences of the seismic waves has been proposed. Moreover, to the N, below the ALCUDIA-NI profile (Martínez-Poyatos et al., 2012), conspicuous scattered reflectors are found at the same time/depth, between 13-14 and 19 s TWT. These have been interpreted to be also images of the Hales discontinuity in the area (Palomeras et al., submitted). In the same form, the reflectivity seen below the CIMDEF experiment between 45-75 km might be related to a mineral phase transition. To confirm the existence and extend of this area, velocity information would be needed. In this regard, a similar scenario is found below the Urals, where a heterogeneous upper mantle, as the one of this study, was sampled by a dense wide-angle seismic experiment (Carbonell, 2004b).

Conclusions



460 In this work, we present a lithospheric scale reflectivity profile of the central part of the Iberian Peninsula by means of
 Global Phase Seismic Interferometry (GloPSI) acquired as part of the CIMDEF project. The array covers the Cenozoic
 Duero and Tajo basins, to the N and S respectively of the Central System. The most relevant finding of the resulting
 image is the thickening of the Central System crust through a northward directed imbrication of its lowermost part. In
 general, the crust-mantle boundary presents depths between 29-31 km to the N and S of the profile, while below the
 465 Central System it reaches depths of 38 km. The crustal thickening has a wavelength of around 100 km, and encloses the
 entire Central System, from the southern thrust, the boundary to the S with the Tajo Basin, until the southern border of
 the Duero Basin. As yet, it is not clear if the imaged lower crust imbrication affects also the upper crust. In fact, the
 surface projection of this feature could be projected on top of the southern Central System thrust or the Tietar River faults
 system, thus indicating that the whole crust might be affected by this feature and further explaining the low topographies
 470 of the meseta to the S of the Central System. However, the fact that a Variscan mid-crustal detachment has been inferred
 and the lack of estimations of lower crustal shortening hinder this interpretation. Higher resolution datasets are necessary
 to image these features.

Furthermore, the profile reveals a clear different reflectivity signature within the crust. The crust is subdivided into two
 475 main layers, the upper and lower crust. The upper crust is inferred to be formed mainly by massive granitoids under the
 Central System down to 5.5 s TWT, as its seismic response is dominated by low frequencies and high amplitudes. Below
 this layer, the lower crust is characterized by high frequency and high amplitude arrivals, supporting the existence of high
 impedance contrast layers that have been already imaged with vertical incidence data in the lower crust to the S and N of
 the CIMDEF profile.

480 The interface that separates upper and lower crust (≈ 12.5 -15 km depth), is proposed to be a detachment level between
 both crusts. However, the characteristics of the outcropping rocks, showing ductile deformation in many areas hinders its
 interpretation as fragile-ductile transition. Further studies about this interface are in progress and will be presented
 elsewhere.

485 Within the upper mantle, patches of reflectivity are found in two bands, 45-55 km depth and 70-75 km depth. Both
 reflections are scattered through the profile and appear almost flat. We relate them both with the possible N extension of
 the Hales discontinuity, the transition zone from spinel-lherzolite to garnet-lherzolite already observed to the S of this
 profile.

490

Author contributions.

JA, MR, IM and PA acquired the data. JA and DD processed the data. JA prepared the manuscript. All authors have
 contributed to the discussion and manuscript review.

Competing interests.

The authors declare that they have no conflict of interest

Acknowledgements

This study was supported by: The Spanish National Research Program under grants refs.: CGL2014-56548-P; CGL2016-
 500 81964-REDE; the Generalitat de Catalunya 2017-SGR-1022; J. A. is supported by FPI grant BES-2015-071683 from the
 Spanish State Department of Science Innovation and Universities. The data used for the research carried out in this



contribution is stored at the DIGITAL.CSIC data repository. We would like to acknowledge the ICTJA-CSIC Seismic Laboratory (<http://labsis.ictja.csic.es/>) for making their seismic station available for this experiment.

505

510

515

520

525

530



Bibliography

- 535 Ayarza, P., Martínez Catalán, J.R., Gallart, J., Dañobeitia, J.J., Pulgar, J.A.: Estudio Sísmico de la Corteza Ibérica Norte 3.3: A seismic image of the Variscan crust in the hinterland of the NW Iberian Massif, *Tectonics*, 17, 171–186, 1998.
- Ayarza, P., Palomeras, I., Carbonell, R., Afonso, J.C., Simancas, J.F.: A wide-angle upper mantle reflector in SW Iberia: Some constraints on its nature, *Physics of the Earth and Planetary Interiors*, 181, 88–102, doi:10.1016/j.pepi.2010.05.004,
 540 2010.
- Banda, E., Suriñach, E., Aparicio, A., Sierra, J., Ruiz de la Parte, E.: Crust and upper mantle structure of the central Iberian Meseta (Spain), *Geophysical Journal of the Royal Astronomical Society* 67, 779–789, 1981.
- 545 Barbero, L., and Villaseca, C.: Eclogite facies relicts in metabasites from the Sierra de Guadarrama (Spanish Central System): P-T estimations for the Hercynian evolution, *Mineralogical Magazine*, 64, 815–836, 2000.
- Bea, F., Montero, P., Zinger, T.: The nature, origin and thermal influence of the granite source layer of Central Iberia, *The Journal of Geology*, 111, 579–595, 2003.
- 550 Bea, F.: La naturaleza del magmatismo de la Zona Centroibérica: Consideraciones generales y ensayo de correlación, in *Geología de España*, edited by J. A. Vera, pp. 128–133, SGE-IGME, Madrid, 2004.
- Carbonell, R., Simancas, F., Juhlin, C., Pous, J., Pérez-Estaún, A., González-Lodeiro, F., Muñoz, G., Heise, W., Ayarza, P.: Geophysical evidence of a mantle derived intrusion in SW Iberia, *Geophysical Research Letters*, 31, L11601, doi:10.1029/2004GL019684, 2004a.
- Carbonell, R.: On the nature of the mantle heterogeneities and discontinuities: evidence from a very dense wide-angle shot record, *Tectonophysics*, 388, 103–117, 2004b.
- 560 Carbonell, R., Levander, A., Kind, R.: The Mohorovičić discontinuity beneath the continental crust: An overview of seismic constraints, *Tectonophysics*, 609, 353–376, doi.org/10.1016/j.tecto.2013.08.037, 2013.
- Claerbout, J.: Synthesis of a layered medium from its acoustic transmission response: *Geophysics*, 33, 264–269, doi: 10.1190/1.1439927, 1968.
- 565 Claerhout, J.: Synthesis of a layered medium from its acoustic transmission response: *Geophysics*, 33, 264–269, doi: 10.1190/1.1439927, 1968.
- Cloetingh, S., Burov, E., Beekman, F., Andeweg, B., Andriessen, P.A.M., Garcia-Castellanos, D., de Vicente, G., Vegas, R.: Lithospheric folding in Iberia, *Tectonics*, 21(5), 1041, 2002.
- 570 De Bruijne, C. H., and Andriessen, P. A. M.F.: Fault related denudation in the Spanish Central System (central Spain), recording the far field effects of Alpine plate tectonic history of the Iberian microplate, *Tectonophysics*, 349, 161 – 184, 2002.



- de Vicente, G., Giner, J.L., Muñoz-Martín, A., González-Casado, J.M., Lindo, R.: Determination of present-day stress
 575 tensor and neotectonic interval in the Spanish Central System and Madrid Basin, central Spain: Dynamics of Extensional
 Basins and Inversion Tectonics, *Tectonophysics*, 266, 405–424. doi:10.1016/S0040-1951(96)00200-4, 1996.
- de Vicente, G., Vegas, R., Muñoz Martín, A., Silva, P.G., Andriessen, P., Cloetingh, S., González Casado, J.M., Van
 Wees, J.D., Álvarez, J., Carbó, A., Olaiz, A.: Cenozoic thick-skinned deformation and topography evolution of the
 580 Spanish Central System, *Global and Planetary Change*, 58, 335–381. doi:10.1016/j.gloplacha.2006.11.042, 2007.
- de Vicente, G., Cunha, P. P., Muñoz-Martín, A., Cloetingh, S. A. P. L., Olaiz, A., Vegas, R.: The Spanish-Portuguese
 Central System: An example of intense intraplate deformation and strain partitioning, *Tectonics*, 37, 4444–4469.
<https://doi.org/10.1029/2018TC005204>, 2018.
 585
- Díaz, J., Gallart, J., Carbonell, R.: Moho topography beneath the Iberian-Western Mediterranean region mapped from
 controlled-source and natural seismicity surveys, *Tectonophysics*, 692, 74–85,
<http://dx.doi.org/10.1016/j.tecto.2016.08.023>, 2016.
- Díez Balda, M. A., Vegas, R., González Lodeiro, F.: Central- Iberian Zone. Autochthonous Sequences. Structure, in *Pre-
 Mesozoic Geology of Iberia*, edited by R. D. Dallmeyer and E. Martínez García, pp. 172–188, Springer, Berlin, 1990.
- Díez Balda, M. A., Martínez Catalán, J.R., Ayarza, P.: Syn-collisional extensional collapse parallel to the orogenic trend
 in a domain of steep tectonics: The Salamanca detachment zone (Central Iberian Zone, Spain), *Journal of Structural
 595 Geology*, 17, 163–182, 1995.
- Ehsan, S. A., Carbonell, R., Ayarza, P., Martí, D., Pérez-Estaún, A., Martínez-Poyatos, D., Simancas, F., Azor, A.,
 Mansilla, L.: Crustal deformation styles along the reprocessed deep seismic reflection transect of the Central Iberian Zone
 (Iberian Peninsula), *Tectonophysics*, 621, 159–174, <http://dx.doi.org/10.1016/j.tecto.2014.02.014>, 2014.
 600
- Ehsan, S. A., Carbonell, R., Ayarza, P., Martí, D., Martínez-Poyatos, D., Simancas, J.F., Azor, A., Ayala, C., Torné, M.,
 Pérez-Estaún A.: Lithospheric velocity model across the Southern Central Iberian Zone (Variscan Iberian Massif): The
 ALCUDIA wide-angle seismic reflection transect, *Tectonics*, 34, 535–554, doi:10.1002/2014TC003661, 2015.
- Flecha, I., Palomeras, I., Carbonell, R., Simancas, F., Ayarza, P., Matas, J., González-Lodeiro F., Pérez-Estaún, A.:
 605 Seismic imaging and modelling of the lithosphere of SW-Iberia, *Tectonophysics*, 472(1–4), 148–15,
 doi:10.1016/j.tecto.2008.05.033, 2009.
- Fonseca, P., Ribeiro, A.: Tectonics of the Beja-Acebuches Ophiolite: a major suture in the Iberian Variscan Foldbelt,
 610 *Geologische Rundschau*, 82(3), 440–447, <https://doi.org/10.1007/BF00212408>, 1993.
- Franke, W.: The mid-European segment of the Variscides: tectonostratigraphic units, terrane boundaries and plate tectonic
 evolution, in *Orogenic Processes: Quantification and Modelling in the Variscan Belt*, edited by W. Franke et al.,
 Geological Society, London, Special Publications, 179, 35–61, doi:10.1144/GSL.SP.2000.179.01.05, 2000.

615



- Hales, A.: A seismic discontinuity in the lithosphere, *Earth and Planetary Science Letters* 7, 44–46, 1969.
- Julivert, M., M. Fontboté, A. Ribeiro, and Conde, L. E.: Mapa y Memoria Explicativa del Mapa Tectónico de la Península Ibérica y Baleares, scale 1: 1,000,000, 113 pp., Inst. Geol. y Min. de Esp., Madrid, 1972.
- 620 Kennett B.L.N., Engdahl, E.R., Buland R.: Constraints on seismic velocities in the earth from travel times, *Geophysical Journal International*, 122, 108–124, 1995.
- Mancilla, F.L., Diaz, J.: High resolution Moho topography map beneath Iberia and Northern Morocco from receiver
 625 function analysis, *Tectonophysics*, 203–211. <http://dx.doi.org/10.1016/j.tecto.2015.06.017>, 2015.
- Martínez Catalán, J.R., Rubio Pascual, F.J., Díez Montes, A, Díez Fernández, R., Gómez Barreiro, J., Dias da Silva, I., González Clavijo, I., Ayarza, P., Alcock, J.E.: The late Variscan HT/LP metamorphic event in NW and Central Iberia: relationships to crustal thickening, extension, orocline development and crustal evolution, *Geological Society, London, Special Publications*, 405, <https://doi.org/10.1144/SP405.1>, 2014.
- 630 Martínez-Poyatos, D., Carbonell, R., Palomeras, I., Simancas, F., Ayarza, P., Martí, D., Azor, A., Jabaloy, A., González Cuadra, P., Tejero, R., Martín Parra, L.M., Matas, J., González Lodeiro, F., Pérez-Estaún, A., García Lobón, J.L., Mansilla, L.: Imaging the crustal structure of the Central Iberian Zone (Variscan Belt): the ALCUDIA deep seismic reflection transect, *Tectonics* 31(3), TC3017, <http://dx.doi.org/10.1029/2011TC002995>, 2012.
- 635 Matte, P.: The Variscan collage and orogeny (480–290 Ma) and the tectonic definition of the America microplate: A review, *Terra Nova*, 13, 122–128, doi:10.1046/j.1365-3121.2001.00327.x, 2001.
- 640 Muñoz-Martín, A., De Vicente, G., Fernández-Lozano, J., Cloetingh, S. A. P. L., Willingshofer, E., Sokoutis, D., Beekman, F.: Spectral analysis of the gravity and elevation along the western Africa–Eurasia plate tectonic limit: Continental versus oceanic lithospheric folding signals, *Tectonophysics*, 495(3–4), 298–314. <https://doi.org/10.1016/j.tecto.2010.09.036>, 2010.
- 645 Nishitsuji, Y., E. Ruigrok, M. Gomez, K. Wapenaar, Draganov, D.: Reflection imaging of aseismic zone of the Nazca slab by global-phase seismic interferometry: Interpretation, 4, doi: 10.1190/int-2015-0225.1, 2016a.
- Nishitsuji, Y., Rowe, C.A., Wapenaar, K., Draganov, D.: Reflection imaging of the Moon’s interior using deep-moonquake seismic interferometry, *Journal Geophysical Research: Planets*, 121, 695–713, doi:10.1002/2015JE004975,
 650 2016b.
- Palomeras, I., Carbonell, R., Flecha, I., Simancas, F., Ayarza, P., Matas, J., Martínez-Poyatos, D., Azor, A., González Lodeiro, F., Pérez-Estaún, A.: The nature of the lithosphere across the Variscan Orogen of SW-Iberia: Dense wide-angle seismic reflection data, *Journal of Geophysical Research: Solid Earth*, 114, B02302, doi:10.1029/2007JB005050, 2009.
- 655



- Palomeras, I., Carbonell, R., Ayarza, P., Fernandez, M., Simancas, F., Martínez-Poyatos, D., González Lodeiro, F., and A. Pérez-Estaún, A.: Geophysical model of the lithosphere across the Variscan Belt of SW-Iberia: multidisciplinary assessment, *Tectonophysics*, 508, 42–51, <http://dx.doi.org/10.1016/j.tecto.2010.07.010>, 2011.
- 660 Pérez Estaún, A., Martínez Catalán, J.R., Bastida, F.: Crustal thickening and deformation sequence in the footwall to the suture of the Variscan belt of northwest Spain, *Tectonophysics*, 191, 243–253, 1991.
- Pulgar, J. A., Pérez-Estaún, A., Gallart, J., Álvarez-Marrón, J., Gallastegui, J., Alonso, J. L., and ESCIN Group: The ESCIN-2 deep seismic reflection profile: a traverse across the Cantabrian Mountains and adjacent Duero basin, *Revista*
 665 *Sociedad Geológica España*, 8, 383–394, 1995.
- Quintana, I., Pulgar, J. A., Alonso, J. L.: Displacement transfer from borders to interior of a plate: A crustal transect of Iberia, *Tectonophysics*, 663, 378–398. <https://doi.org/10.1016/j.tecto.2015.08.046>, 2015.
- 670 Ruigrok, E., Wapenaar, K.: Global-phase seismic interferometry unveils P-wave reflectivity below the Himalayas and Tibet, *Geophysical Research Letters*, 39, L11303, doi: 10.1029/2012GL051672, 2012.
- Schimmel, M., Gallart, J.: Frequency-dependent phase coherence for noise suppression in seismic array data, *Journal of Geophysical Research: Solid Earth*, 112, B04303, doi:10.1029/2006JB004680, 2007.
- 675 Simancas, J.F., Carbonell, R., González Lodeiro, F., Pérez-Estaún, A., Juhlin, C., Ayarza, P., Kashubin, A., Azor, A., Martínez-Poyatos, D., Almodóvar, G.R., Pascual, E., Sáez, R., and Expósito,.: Crustal structure of the transpressional Variscan orogen of SW Iberia: SW Iberia deep seismic reflection profile (IBERSEIS), *Tectonics*, 22(6), 1062, doi:10.1029/2002TC001479, 2003.
- 680 Simancas, J. F., Ayarza, P., Azor, A., Carbonell, R., Martínez-Poyatos, D., Pérez-Estaún, A., and González Lodeiro, F.: A seismic geotraverse across the Iberian Variscides: Orogenic shortening, collisional magmatism, and orocline development, *Tectonics*, 32, 417–432, doi:10.1002/tect.20035, 2013.
- 685 Suriñach, E., Vegas, R., 1988. Lateral inhomogeneities of the Hercynian crust in central Spain. *Physics of the Earth and Planetary Interior*, 51, 226–234.
- Tait, J., Schätz, M., Bachtadse, V., Soffel, H.: Palaeomagnetism and Palaeozoic palaeogeography of Gondwana and European terranes, in *Orogenic Processes: Quantification and Modelling in the Variscan Belt*, edited by W. Franke et al.,
 690 Geological Society, London, Special Publications, 179, 21–34, doi:10.1144/GSL.SP.2000.179.01.04, 2000.
- Teixell, A., Labaume, P., Ayarza, P., Espurt, N., de Saint Blanquat, M., Lagabriele, Y.: Crustal structure and evolution of the Pyrenean-Cantabrian belt: A review and new interpretations from recent concepts and data, *Tectonophysics*, 724–725, 146–170, <https://doi.org/10.1016/j.tecto.2018.01.009>, 2018.
- 695 Tejero, R., Perucha, M.A., Rivas, A., Bergamín, J.F.: Gravity and structural models of Spanish Central System, *Geogaceta*, 20, 947–950, 1996.



700 Torne, M., Fernández, M., Vergés, J., Ayala, C., Salas, M. C., Jimenez-Munt, I., Diaz, J.: Crust and mantle lithospheric
structure of the Iberian Peninsula deduced from potential field modeling and thermal analysis, *Tectonophysics*, 663, 419–
433. <https://doi.org/10.1016/j.tecto.2015.06.003>, 2015.

Vegas, R., Vázquez, J.T., Suriñach, E., Marcos, A.: Model of distributed deformation, block rotations and crustal
thickening for the formation of the Spanish Central System, *Tectonophysics*, 184, 367-378. doi:10.1016/0040-
705 1951(90)90449-I, 1990.

Villaseca, C., Barbero, L., Rogers, G.: Crustal origin of Hercynian peraluminous granitic batholiths of Central Spain:
Petrological, geochemical and isotopic (Sr, Nd) arguments, *Lithos*, 43, 55–79, 1998.

710 Wapenaar, K.: Synthesis of an inhomogeneous medium from its acoustic transmission response, *Geophysics*, 68, 1756–
1759, doi: 10.1190/1.1620649, 2003.

715

720

725



730 FIGURES

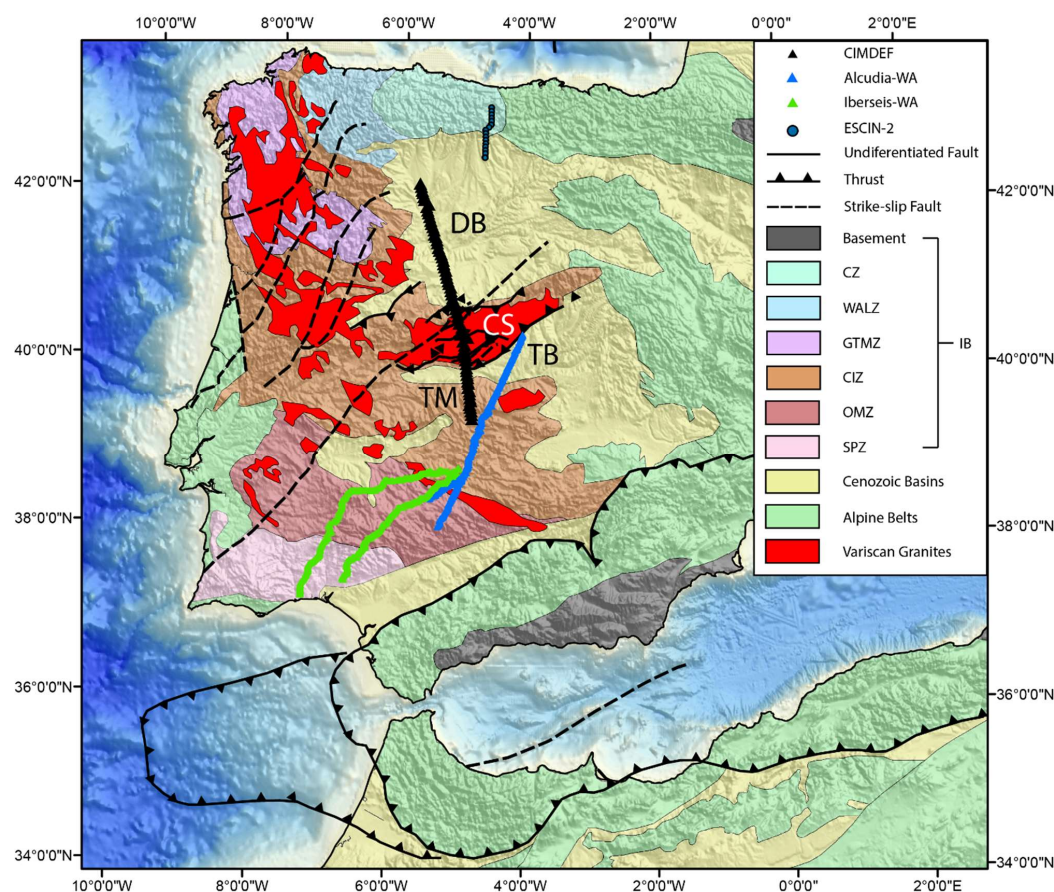


Figure 1. Simplified geological map of the study area with major tectonic provinces of the Iberian Massif and structures. TM: Toledo Mountains, CS: Central System, DB: Duero Basin, TB: Tajo Basin, CZ: Cantabrian Zone, WALZ: West-Asturian Leonese Zone, GTMZ: Galicia Tras-os Montes, CIZ: Central Iberian Zone, OMZ: Ossa-Morena Zone, SPZ: South Portuguese Zone

735

740

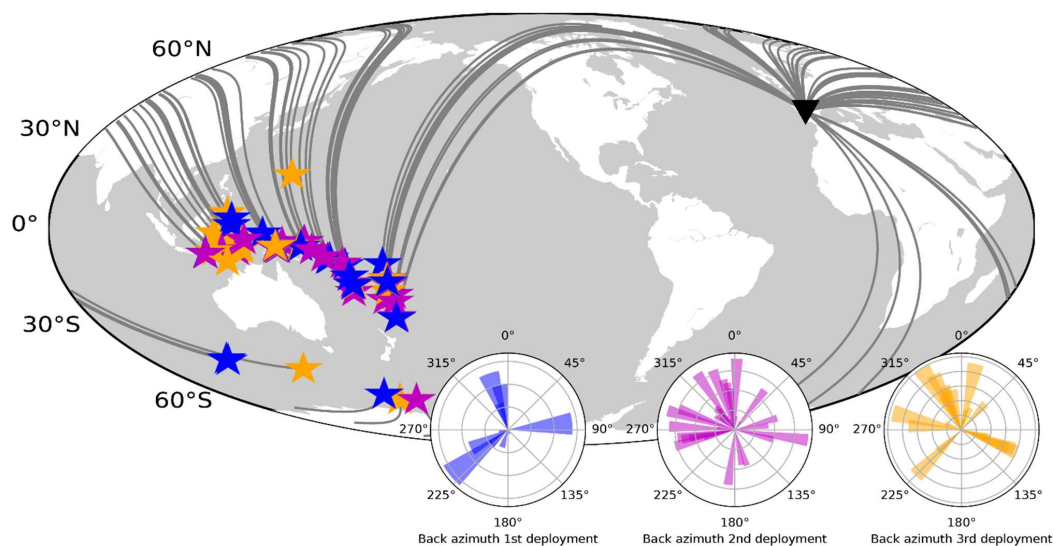


Figure 2. Colour-coded earthquakes (Magnitude ≥ 5) used for the three deployments. 17 earthquakes (blue stars) used for the central deployment, 38 (purple stars) for the southern, segment and 26 (orange stars) for the northern part of the profile. Polar plots represent the back azimuth of selected earthquakes for each deployment.

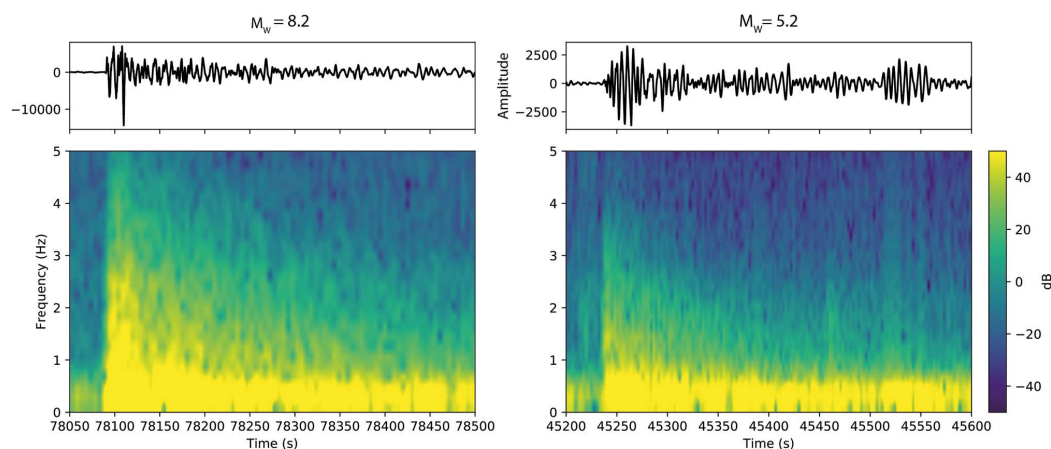


Figure 3. Power-spectral density of two earthquakes recorded by the CIMDEF array. They cover both ends of the used magnitudes, thus proving the existence of energy at the selected frequency band.

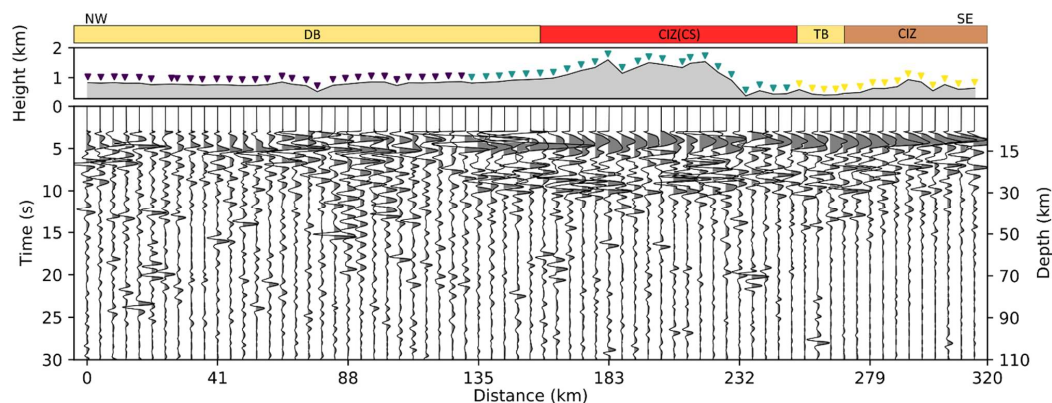
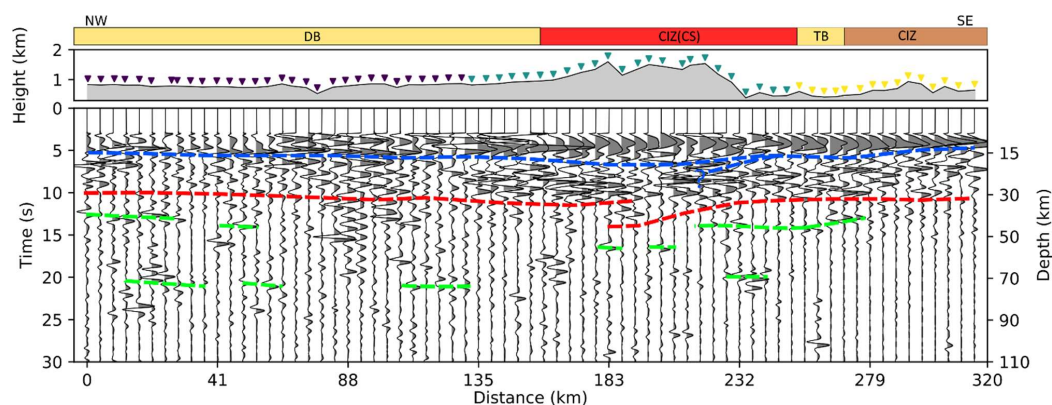


Figure 4. Reflectivity profile retrieved by Global-Phase Seismic Interferometry. In the wiggle plot, the grey lobes indicate positive polarity. On top, extend of the geological areas crossed by the profile. Coloured triangles represent the different acquisition stages (from north to South, 3rd, 1st, and 2nd deployments)



810 **Figure. 5** Interpretation of the lithospheric reflectivity profile. The blue dashed line marks the boundary between the upper
 crust and the mid-lower crust. The red dashed line is the crust-mantle boundary. Scattered reflectivity within the upper
 mantle is marked by the green dashed lines.

815

820

825

830

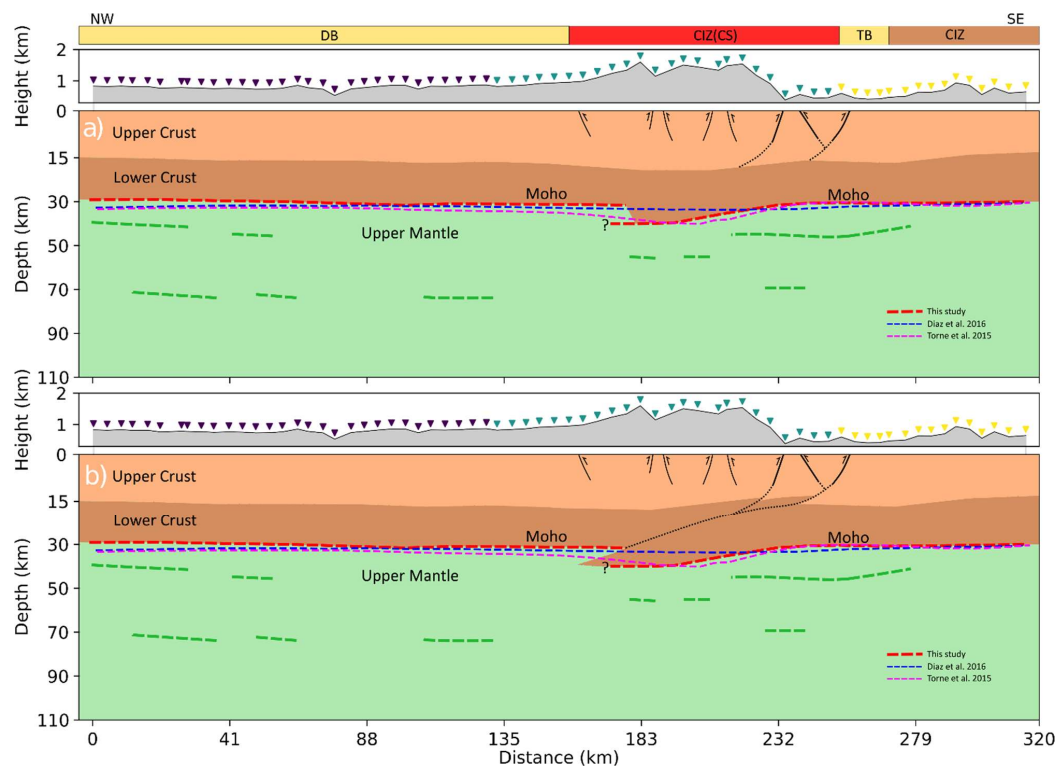


Figure. 6 Sketch of the proposed crustal geometry, overlapped with Moho results from gravity inversion and RF. a) model where the S thrust and the Tietar fault lie within the upper crust and only the lower crust imbricates; b) model where the entire crust imbricates below the CS



Table 1. Global earthquakes used in this study.

Date	Latitude (°)	Longitude (°)	Depth (km)	Magnitude	Deployment
24/05/2017	-10.0191	161.9535	52	5.5	Central
25/05/2017	-22.3132	-176.3299	127	5.6	Central
29/05/2017	-1.2923	120.4313	12	6.6	Central
30/05/2017	-12.113	167.266	257.42	5.2	Central
02/06/2017	-4.7348	145.1363	192.85	5.9	Central
03/06/2017	-62.5792	155.834	10	5.9	Central
09/06/2017	-16.855	-177.6	10	5.6	Central
09/06/2017	5.486	125.139	13.99	5.2	Central
09/06/2017	-10.26	161.185	53.2	5.2	Central
10/06/2017	-54.3039	-146.639	10	5.6	Central
10/06/2017	-11.503	166.433	48.46	5.1	Central
12/06/2017	3.69	126.776	56.82	5.4	Central
14/06/2017	-18.3246	168.728	13.6	5.8	Central
15/06/2017	-30.5156	-178.0563	34	6	Central
15/06/2017	-55.414	-124.789	10	5.8	Central
17/06/2017	-24.0927	179.6041	511	6.1	Central
17/06/2017	51.76	-173.371	29.46	5.3	Central
25/02/2018	-6.0699	142.7536	25.21	7.5	South
25/02/2018	-5.8339	142.263	10	5.7	South
26/02/2018	-5.4592	151.8089	20.16	5.6	South
26/02/2018	-6.3991	143.2581	9	5.9	South
26/02/2018	-6.4973	143.5497	22	5.8	South
26/02/2018	-2.7774	126.6859	9	6.1	South
26/02/2018	-6.5052	143.255	19	6.3	South
27/02/2018	-18.8679	169.2903	203	5.5	South
27/02/2018	-6.4033	143.0332	12	5.7	South
27/02/2018	-60.2494	150.7793	10	6.1	South
28/02/2018	-6.1696	142.4681	16	6.1	South
02/03/2018	-6.1353	130.2782	135	5.9	South
04/03/2018	-6.0741	142.7211	6	5.7	South
04/03/2018	-6.331	142.5994	10	6	South
06/03/2018	-6.2314	142.4131	10	5.5	South
06/03/2018	-6.3043	142.6116	20.49	6.7	South
07/03/2018	-5.4456	151.3913	50	5.6	South
08/03/2018	-3.3428	130.9337	10	5.6	South
08/03/2018	-4.3762	153.1996	22.86	6.8	South
09/03/2018	-4.2814	153.3875	30	5.8	South
09/03/2018	-21.0006	-178.606	540.34	5.7	South
12/03/2018	-46.3559	95.9296	10	5.6	South
22/03/2018	-30.1742	-177.7218	22.22	5.5	South
24/03/2018	-5.4959	151.4971	33	6.3	South
24/03/2018	-45.7783	96.0692	10	6	South
25/03/2018	-7.3049	128.4848	144	5.7	South
25/03/2018	-6.6343	129.8172	169	6.4	South



26/03/2018	-5.5024	151.4025	40	6.7	South
29/03/2018	-9.4211	159.5792	32	5.8	South
29/03/2018	-5.5321	151.4999	35	6.9	South
29/03/2018	-5.899	151.8542	10	5.7	South
02/04/2018	-24.719	-176.8865	92	6.1	South
05/04/2018	-18.2946	-177.9138	511	5.8	South
06/04/2018	-1.4171	138.2026	10	5.6	South
07/04/2018	-6.3608	142.6662	10	5.5	South
07/04/2018	-5.8382	142.5314	18.07	6.3	South
15/04/2018	1.4083	126.8759	34	6	South
17/04/2018	-3.5216	131.3032	10	5.5	South
06/07/2018	-49.6301	126.0404	10	5.5	North
07/07/2018	-30.5662	-178.0701	35	6	North
08/07/2018	-21.2766	168.4961	10	5.5	North
08/07/2018	-19.0182	169.4901	255	5.5	North
13/07/2018	-18.9279	169.0467	167	6.4	North
17/07/2018	-11.5936	166.432	37.96	6	North
20/07/2018	18.45	145.993	121	5.6	North
22/07/2018	-18.9577	168.8868	103.46	5.5	North
28/07/2018	-7.1039	122.7263	578.16	6	North
28/07/2018	-8.2395	116.508	14	6.4	North
05/08/2018	-8.2579	116.4403	34	6.9	North
10/08/2018	-62.6208	165.635	10	5.6	North
17/08/2018	-7.3718	119.8017	529	6.5	North
19/08/2018	-18.1132	-178.1523	600	8.2	North
19/08/2018	-18.4447	-177.6404	575.76	6.3	North
19/08/2018	-18.2293	-178.1002	537.63	5.6	North
19/08/2018	-18.2748	-178.3539	618.29	5.7	North
19/08/2018	-8.3366	116.5993	16	6.3	North
19/08/2018	-16.9783	-178.0332	415.6	6.8	North
19/08/2018	-8.319	116.6271	21	6.9	North
19/08/2018	-8.3511	116.5565	10	5.8	North
20/08/2018	-18.1559	-178.1888	526.17	5.5	North
21/08/2018	-16.0295	168.145	9	6.5	North
22/08/2018	-6.9675	155.7284	34	5.8	North
28/08/2018	-10.8859	124.1187	14	6.2	North
28/08/2018	-18.0299	-177.9387	600.62	5.7	North