

Alkali basalt from Seifu Seamount in the Japan Sea: post-spreading magmatism in a back-arc setting

5 Tomoaki MORISHITA^{1,2}, Naoto HIRANO³, Hirochika SUMINO⁴, Hiroshi SATO⁵, Tomoyuki SHIBATA⁶,
Masako YOSHIKAWA⁶, Shoji ARAI⁷, Rie NAUCHI⁷, Akihiro TAMURA⁷

¹Faculty of Geosciences and Civil Engineering, Kanazawa University,
Kanazawa 920-1192, Japan

²Lamont-Doherty Earth Observatory, Columbia University, Palisades, NY 10964, USA

³Center for Northeast Asian Studies, Tohoku University, 41 Kawauchi, Aoba-ku, Sendai 980-8576, Japan

10 ⁴Graduate School of Arts and Sciences, University of Tokyo, 3-8-1 Komaba, Meguro-ku, Tokyo 153-0041, Japan

⁵Department of Business Administration, Senshu University, 2-1-1, Higashimita, Tama-ku, Kawasaki-shi,
Kanagawa 214-8580, Japan

⁶Department of Earth and Planetary Systems Science, Graduate School of Science, Hiroshima University,
1-3-2 Kagamiyama, Higashi-Hiroshima City, Hiroshima 739-8511, Japan

15 ⁷School of Natural System, Kanazawa University, Kanazawa 920-1192, Japan

Correspondence to: Tomoaki Morishita (tomo_make_a_wish@icloud.com)

Abstract. We present geochemical and ⁴⁰Ar/³⁹Ar age data for a peridotite xenolith-bearing basalt dredged from Seifu Seamount (SSM basalt) in the northeast Tsushima Basin, southwest Japan Sea. A ⁴⁰Ar/³⁹Ar plateau age of 8.33 ± 0.15 Ma (2σ) was obtained for the SSM basalt, indicating that it was erupted shortly after the termination of back-arc spreading in the
20 Japan Sea. The SSM basalt is a high-K to shoshonitic alkali basalt that is characterized by light rare earth element enrichment. The trace element features of the basalt are similar to those of ocean island basalt, although the Yb content is much higher, indicating formation by low-degree partial melting of spinel peridotite. The Nd, Sr, and Pb isotopic compositions of the SSM basalt differ from those of back-arc basin basalts in the Japan Sea. The Sr–Nd isotopic composition of the SSM basalt suggests its source was depleted mid-ocean ridge mantle containing an EM1-like component. The SSM
25 basalt was formed in a post-back-arc extension setting by low-degree partial melting of upwelling asthenosphere that had previously been associated with the main phase of back-arc magmatism.

Keywords: Back-arc magmatism, Alkali basalt, Japan Sea, Post-back-arc magmatism

1. Introduction

30 Numerous studies have investigated the magmatism that occurs during back-arc rifting (e.g., Martinez *et al.*, 2001; Pearce and Stern, 2006). The Japan Sea is a typical inactive back-arc basin developed between an island arc and a continent (Tamaki and Honza, 1985; Uyeda and Kanamori, 1979), and is located in the northern part of the western Pacific where back-arc basins are common. Numerous geophysical surveys have been carried out to elucidate the architecture of the Japan

Sea back-arc basin and its formation processes (e.g., Lee *et al.*, 1999; Yoon *et al.*, 2014; Sato *et al.*, 2014). Geophysical data and sampling by the Ocean Drilling Program (ODP) have revealed the mechanisms of formation of the northern Japan Sea (Tamaki *et al.*, 1992) (Fig. 1). Lithospheric break-up and oceanic spreading began at the eastern margin of the continent at 32–28 Ma, and back-arc magmatism ceased at 18–15 Ma (Tamaki *et al.*, 1992). The basins in this region comprise mainly extended continental and oceanic crust (Tamaki *et al.*, 1992). A chain of seamounts and islands are distributed in these basins (Fig. 1). Volcanic rocks from seamounts in the Yamato Basin have ages of 13–6 Ma (Kaneoka *et al.*, 1990; Kaneoka and Yuasa, 1988), whereas volcanism on Ulleung Island in the Tsushima Basin (Ulleung Basin) is much younger (<2 Ma; Kim *et al.*, 1999).

One basaltic sample containing mantle xenoliths was dredged from Seifu Seamount (herein called the SSM basalt) in the northeast Tsushima Basin in the southwest Japan Sea (Fig. 1) (Ninomiya *et al.*, 2007). Peridotites from back-arc basins have rarely been reported (Ichiyama *et al.*, 2013; Ohara, 2006). Such xenoliths could provide insights into the architecture and history of the Japan Sea basins. To evaluate the significance of these xenoliths, we report petrological, geochemical, and geochronological data for this mantle xenolith-bearing alkali basalt sample that was first described by Ninomiya *et al.* (2007).

Pouclet *et al.* (1995) summarized the magmatic history of the circum-Japan Sea region, including the southwest Japan arc, northeast China, and back-arc basins (Japan Basin, Ulleung Basin, and Yamato Basin). Alkali basalt magmatism became common in the southwest Japan arc after the termination of extension in the Japan Sea at <4 Ma. Kim and Yoon (2017) suggested that seamounts in the Tsushima Basin were formed post-back-arc spreading, based on geochemical data for the alkali basalt samples studied by Lee *et al.* (2011). Sato *et al.* (2002) proposed that post-back-arc spreading magmatism during the last stages of back-arc basin spreading and after the cessation of spreading is a common process in the latter stages of back-arc development. Ishizuka *et al.* (2009) also investigated post-back-arc spreading magmatism in the Shikoku Basin of the Izu–Bonin arc–back-arc system. In this paper, we discuss the origin of the SSM basalt in the context of post-back-arc magmatism.

2. Geological setting and sample description

Seifu Seamount is located at the northeastern margin of Tsushima Basin, which is a junction of three basins that are located between continental crustal fragments (Fig. 1). Tsushima Basin is now geomorphologically connected to the southwestern margin of the Japan Basin by the Ulleung Interplain Gap (UIG), and is separated from Yamato Basin by the Yamato Rise and Oki Bank. The studied basalt sample was dredged from Seifu Seamount by the KT85-15 cruise of *R/V Tansei-maru* of the Ocean Research Institute, University of Tokyo, in 1985 (Dredge Station No. KT85-15 D-3: 38°12.20'–12.80'N and 132°34.70'E) (Shimamura *et al.*, 1987). Lee *et al.* (1999) proposed that the basement of Tsushima Basin is thick oceanic crust formed by incomplete extension of continental crust, which was caused by the westward propagation of extension during opening of the Japan Sea. Tsushima Basin was opened in a N–S direction, as evidenced by the NE–SW

orientation of ridge-like features parallel to the Yamato Basin spreading axis (Lee *et al.*, 1999). Kim *et al.* (2011) showed that a chain of seamounts buried by sediments occurs along the UIG, and proposed that the ages of the UIG seamounts are the same as those of the Yamato Seamount Chain. Seifu Seamount is located in the Japan Basin in the most ENE region of the UIG seamount chain.

5 The basalt sample contains peridotite xenoliths of variable size from a few millimeters to <3 cm, although rare xenoliths are up to 10 cm in size, along with associated xenocrysts (Ninomiya *et al.*, 2007) (Fig. 2). Ninomiya *et al.* (2007) divided the peridotite xenoliths into two types based on mineral chemistry (Types I and II). Type I xenoliths were interpreted to be residues after relatively high degrees of open system melting caused by light rare earth element (LREE)-enriched fluids–melts, whereas Type II xenoliths have characteristics similar to subcontinental lithospheric mantle.

10 The basalt has a porphyritic texture, and the phenocrysts are mainly olivine, with small amounts of plagioclase, orthopyroxene, clinopyroxene, and spinel. Plagioclase phenocrysts are anhedral with albite twinning, oscillatory zoning, and dusty zones, and are sometimes surrounded by tiny plagioclase crystals that are the same size as crystals in the groundmass. Orthopyroxene phenocrysts are rimmed by fine-grained mineral aggregates, which are similar to the orthopyroxenes in the peridotite xenoliths, indicating the orthopyroxene phenocrysts are xenocrysts. Spinel phenocrysts are up to 0.5 mm in size,
15 anhedral, and rounded. The groundmass is crystalline, has an intersertal texture, and consists mainly of euhedral plagioclase, with small amounts of olivine that is partly serpentinized–altered, opaque minerals (ilmenite and titanomagnetite), apatite, and clinopyroxene (Fig. 2). Locally, the plagioclase crystals in the groundmass exhibit a weakly developed trachytic texture.

3. Geochemistry and dating

3.1. Analytical methods

20 Obvious crustal and mantle xenolith fragments were removed from the basalt sample before crushing to powder. Whole-rock major and trace element compositions of the SSM basalt were determined by electron probe microanalysis (EPMA; JEOL JXA-8800 Superprobe) and laser ablation–inductively coupled plasma–mass spectrometry (LA–ICP–MS) (Agilent 7500S coupled to a MicroLas GeoLas Q-Plus; Ishida *et al.*, 2004) at Kanazawa University, Kanazawa, Japan. For the EMPA and LA–ICP–MS measurements, glass was prepared from the powdered sample with an Ir strip heater (Nicholls,
25 1974; Stoll *et al.*, 2008), which comprises Cu electrodes connected to a direct current power supply and an Ir strip. Approximately 20 mg of the whole-rock powder was fused on the Ir strip. A current of 42–45 A and heating duration of <30 s were used to make the glass. The fused melt was quenched in an air stream after disconnecting the power supply. No visible residual and quench phases were observed in the glass. Details of this analytical method are described by Tamura *et al.* (2015).

30 EMPA was conducted with an accelerating voltage of 15 kV, beam current of 20 nA, and beam diameter of 10 μm . Natural and synthetic mineral standards provided by JEOL were used for all analyses. JEOL software using ZAF corrections was used for data reduction. X-ray peaks of all elements were counted for 10 s. Sodium and K intensities were monitored

during analysis, and no loss of these elements was detected. BHVO-2 glass from the United States Geological Survey (Reference Materials Project; USGS) was analyzed repeatedly to assess data quality. Data precision was better than $\pm 5\%$ and $\pm 20\%$ (relative standard deviation) for elements with abundances of >0.5 and <0.5 wt.%, respectively (Table 1).

5 NIST SRM 612 standard glass was used as the primary calibration standard during LA-ICP-MS analysis, and was analyzed at the beginning of each batch of ≤ 8 unknowns. A linear drift correction was applied between each calibration standard analysis. The elemental concentrations of NIST SRM 612 are the preferred values of Pearce *et al.* (1997). Data were also corrected using ^{29}Si as an internal standard, based on the Si contents obtained by EMPA, following the protocols of Longerich *et al.* (1996). NIST SRM 614 and BHVO-2 glasses were analyzed for data quality control purposes. The measured concentrations for NIST SRM 614 and BHVO-2 are within 10% of previously reported data for these standards, and the precision was better than $\pm 10\%$ (relative standard deviation) for all the analyzed elements.

The major element composition was also determined by X-ray fluorescence spectrometry (XRF; Rigaku Supermini) at Senshu University, Tokyo, Japan. The powdered sample was dried at 950°C and a mixture of this and lithium tetraborate ($\text{Li}_2\text{B}_4\text{O}_7$) flux (1:5 weight ratio) was melted at 1200°C . The analysis was performed using an accelerating voltage of 50 kV and beam current of 4.0 mA. Details of the XRF methodology are given by Sato (2010).

15 The analytical procedures used for chemical separation and isotopic analysis of Sr, Nd, and Pb are outlined by Yoshikawa and Nakamura (1993), Shibata and Yoshikawa (2004), and Miyazaki *et al.* (2003), respectively. Mass spectrometry was conducted with a Thermo-Finnigan MAT262 equipped with nine Faraday cups in static multi-collection mode. Normalizing ratios used to correct for isotopic fractionation were $^{86}\text{Sr}/^{88}\text{Sr} = 0.1194$, $^{146}\text{Nd}/^{144}\text{Nd} = 0.7219$, and 0.061 per atomic mass unit for Pb isotopes. Measured isotopic ratios for standard materials were $^{87}\text{Sr}/^{86}\text{Sr} = 0.710261 \pm 0.000018$ (2 sigma) for NIST 987, $^{143}\text{Nd}/^{144}\text{Nd} = 0.511842 \pm 0.000018$ (2 sigma) for La Jolla, and $^{206}\text{Pb}/^{204}\text{Pb} = 16.937 \pm 0.006$ (2 sigma), $^{207}\text{Pb}/^{204}\text{Pb} = 15.491 \pm 0.0048$ (2 sigma), and $^{208}\text{Pb}/^{204}\text{Pb} = 36.721 \pm 0.026$ (2 sigma) for NIST 981. Total procedural blanks for Sr, Nd, and Pb were <100 , <10 , and <10 pg, respectively. The geochemical and isotopic data for the SSM basalt are summarized in Table 1.

25 We undertook $^{40}\text{Ar}/^{39}\text{Ar}$ dating of the SSM basalt. The sample was crushed into grains that were < 2 millimeters in size, from which fresh groundmass was separated. Samples were wrapped in Al foil and loaded into an Al capsule (70 mm in length and 10 mm in diameter) with flux monitors EB-1 biotite (91.4 ± 0.5 Ma; Iwata, 1997), K_2SO_4 , and CaF_2 . The samples were irradiated for 24 h in the Japan Material Testing Reactor (JMTR). During irradiation, the samples were shielded by Cd foil in order to reduce thermal neutron-induced ^{40}Ar production from ^{40}K (Saito, 1994). The Ar extraction and isotopic analyses were conducted at the Radioisotope Center, University of Tokyo, Tokyo, Japan. During step heating, the gas was extracted in eight steps between 600 and 1300°C . The dating method has been described by Ebisawa *et al.* (2004).

3.2. Results

SiO_2 , TiO_2 , and total alkali contents ($\text{Na}_2\text{O} + \text{K}_2\text{O}$) of the SSM basalt are 49, 1.9, and 5.8 wt.% ($\text{Na}_2\text{O} = 4.0$ wt.% and $\text{K}_2\text{O} = 1.8$ wt.%), respectively. The SSM basalt is classified as an alkali basalt in a total alkalis vs. SiO_2 diagram

(Miyashiro, 1978) (Fig. 3) and low-Ti basalt ($\text{TiO}_2 < 2.5$ wt.%, $\text{Ti/Y} < 500$; Xu et al., 2001). The MgO content and FeO^*/MgO ratio ($\text{FeO}^* = \text{total FeO}$) are 6.4 wt.% and 1.5, respectively.

5 A primitive-mantle-normalized trace element pattern is shown in Fig. 4. The SSM basalt is characterized by LREE enrichment and no apparent anomalies in Eu and high-field-strength elements (HFSE) relative to neighboring REE, whereas Rb and Th exhibit slight negative anomalies. $(\text{Nb/La})_{\text{PM}}$ and $(\text{Ta/La})_{\text{PM}}$ ratios are both ca. 1.5 (Fig. 5a), and La_{PM} and $(\text{La/Yb})_{\text{PM}}$ ratios are 54 and 9, respectively. The trace element pattern of the SSM basalt is similar to those of ocean island basalts (OIB). However, the Yb_{PM} content (6) is distinctly higher than those of OIB (Fig. 5b).

10 Isotopic analyses of the unleached and leached sample (6M HCl) were undertaken to evaluate the effects of alteration (Table 2). Although these isotopic compositions are slightly different, alteration has not significantly affected the isotopic data. $^{143}\text{Nd}/^{144}\text{Nd}$ and $^{87}\text{Sr}/^{86}\text{Sr}$ ratios of the leached sample are 0.512903 and 0.703476, respectively (Fig. 6). The Pb isotopic ratios of the SSM basalt are $^{206}\text{Pb}/^{204}\text{Pb} = 17.664$, $^{207}\text{Pb}/^{204}\text{Pb} = 15.434$, and $^{208}\text{Pb}/^{204}\text{Pb} = 37.308$ (Fig. 6).

The $^{40}\text{Ar}/^{39}\text{Ar}$ age spectrum of the SSM basalt has a plateau age of 8.33 ± 0.15 Ma (2σ) in six fractions at lower temperatures (Fig. 7), with an initial $^{40}\text{Ar}/^{36}\text{Ar}$ ratio obtained from an inverse isochron that corresponds to the atmospheric ratio (295.5; Fig. 7).

15 4. Discussion

4.1. Timing of SSM basaltic magmatism

20 Basalt samples were recovered from the Japan Sea by the ODP Leg 127/128 cruises in the Yamato Basin (Sites 794 and 797) and Japan Basin (Site 795) (e.g., Tamaki *et al.*, 1992) (Fig. 1). $^{40}\text{Ar}/^{39}\text{Ar}$ dating of these basalts indicated formation during back-arc magmatism at 21–18 Ma (Yamato Basin) and 25–15 Ma (Japan Basin) (Kaneoka *et al.*, 1992). Back-arc basin basaltic (BABB) magmatism caused the extension of continental crust until 15 Ma (e.g., Kaneoka *et al.*, 1992; Tamaki *et al.*, 1992). $^{40}\text{Ar}/^{39}\text{Ar}$ dating of andesitic rocks from the Yamato Basin seamounts yielded ages of 17–11 Ma (Kaneoka *et al.*, 1990). The age of the SSM basalt (8.3 Ma) indicates formation shortly after termination of Japan Sea opening, and is clearly older than volcanism on Ulleung and Jeju islands (< 2 Ma).

25 4.2. Origin of the SSM basaltic melt

30 The trace element pattern of the SSM alkali basalt shows no depletion of Nb and Ta relative to LREE (e.g., $\text{Nb}_{\text{PM}}/\text{La}_{\text{PM}} = 1.5$) and high heavy REE (HREE) abundances (e.g., $\text{Yb}_{\text{PM}} = 6$) (Fig. 5). The pattern is broadly similar to OIB-type alkali basalts from oceanic islands (e.g., Ulleung Island) and continental regions of east China, whereas the high HREE abundances distinguish the SSM basalt from other alkali basalts in the circum-Japan Sea area (Fig. 5). Alkali basalts with high Nb/La ratios and HREE abundances have also been reported from the South Korean Plateau, located to the east of SSM (Lee *et al.*, 2011) (Fig. 5c).

The FeO/MnO ratio of a melt is a proxy for contributions from pyroxenite components in the mantle source (Herzberg, 2011). The FeO/MnO ratio of the SSM basalt is 47, which is consistent with partial melting of peridotite (50–60). Relatively high HREE abundances in the SSM basalt can be explained by the residual phases in the mantle source. Key elemental ratios, such as plots of Sm/Yb vs. Nb/Yb and Zr/Y vs. Nb/Yb, (Fig. 8), combined with simple partial melting models, show that garnet was not a residual phase in the mantle source. Formation of the SSM basalt can be explained by low-degree melting of spinel peridotite.

Geochemical contributions from slab-derived components were evaluated by ratios of elements partitioned into aqueous fluids (i.e., Ba) to elements partitioned into silicate melts (i.e., Th, Nb, and Ta), which were normalized to a compatible element in the subducted slab component (i.e., Yb) (Fig. 9). Using this approach, the SSM basalt has a MORB–OIB composition, whereas Japan Sea BABB magmatism and basalts from southwestern Japan show the addition of slab-derived components.

In isotopic plots, the SSM basalt also has a MORB–OIB composition, whereas Japan Sea BABB magmatism is characterized by MORB to island arc tholeiite–ocean island tholeiite (E-type) compositions (Allan and Gorton, 2006; Hirahara *et al.*, 2015) (Fig. 7). The Nd–Sr–Pb isotopic compositions of the SSM basalt are depleted and are more similar to the depleted (D)-type Japan Sea BABB magmatism than the other circum-Japan Sea alkali basalts (Fig. 7). The SSM basalt mantle source may be depleted MORB mantle (DMM) mixed with an enriched mantle component with EM1-like characteristics (Fig. 7). Hirahara *et al.* (2015) suggested that Japan Sea BABB magmatism has a composition between DMM and slab-derived components. The D-type basalts were formed from DMM with little or no contribution from slab-derived components. Forward modeling indicated that the melting conditions for the D-type basalts were deeper and hotter than those for MORB (Hirahara *et al.*, 2015). The contribution of slab-derived components to the mantle source of the SSM basalt was minor. *Peridotite xenoliths in the SSM basalt are not directly related to its petrogenesis.* The SSM basalt was likely a product of heterogeneous asthenospheric mantle as discussed in the next section.

4.3. Tectonic setting of the SSM basalt

The age and geochemistry of the SSM basalt suggest that upwelling of the Japan Sea back-arc asthenosphere continued after the cessation of back-arc spreading, such that low-degree partial melting could occur. The Nd, Sr, and Pb isotopic compositions of the SSM basalt are also clearly different from those of alkali basalts in the circum-Japan Sea area. In Nd–Sr and Pb isotope diagrams, data for the SSM basalt is slightly offset from the compositional trend of Japan Sea BABB magmatism (Fig. 7). Alkali basalts from the South Korean Plateau also have distinctive Nd–Sr isotopic compositions, which are similar to the SSM basalt (Fig. 5a), whereas their Pb isotopic compositions are similar to Japan Sea BABB magmatism (Fig. 7). The isotopic compositions of the SSM basalt are similar to those of 13–6 Ma trachyandesites from seamounts in Yamato Basin (Tatsumoto and Nakamura, 1991).

Based on geochemical data for South Korean Plateau basalts and the tectonic history of Tsushima Basin, Kim and Yoon (2017) concluded that these basalts were the product of post-extensional magmatism. However, the age of these basalts is unknown. Numerous submarine volcanoes, including seamounts buried by sediments, were discovered in the Japan Sea (e.g., Kimura *et al.*, 1987; Kim *et al.*, 2011) (Fig. 1). These submarine volcanoes and seamounts were also likely formed after back-arc spreading ceased.

Due to the very minor contributions from slab components to the SSM basalt source, the SSM basalt can be used to reveal the mantle components beneath the Japan Sea back-arc region of the western Pacific. Alkali basalts have also been reported from the Philippine Sea Plate (Kinan Seamount Chain; Sato *et al.*, 2002; Ishizuka *et al.*, 2009) and Pacific Plate (petit-spot magmas; Fig. 1; Hirano *et al.*, 2006; Machida *et al.*, 2009) near the Japan Sea in the western Pacific. The geochemical characteristics of the SSM basalt are similar to those of the Kinan Seamount Chain, but different from those of petit-spot magmas (Figs 3–6). Sato *et al.* (2002) described post-spreading magmatism that formed seamounts, which comprise enriched basalts, in the back-arc region of Shikoku Basin that formed during and/or after the last stages of back-arc spreading. Sato *et al.* (2002) suggested that post-spreading magmatism is a common process in back-arc basins in the western Pacific. For example, in contrast to the spreading-related magmatism (30–15 Ma), enriched basaltic magmatism (Kinan Seamount Chain; Fig. 1: 15–7 Ma) has been identified in the Shikoku Basin in the Izu–Bonin back-arc (Sato *et al.*, 2002; Ishizuka *et al.*, 2009). The age of the SSM basalt (8.3 Ma) is ca. 7 Myr younger than the termination of Japan Sea spreading (~15 Ma), and similar to that of post-spreading magmatism in Shikoku Basin. Ishizuka *et al.* (2009) suggested that post-back-arc spreading magmatism in Shikoku Basin was caused by heterogeneities in upwelling asthenospheric mantle, which produces BABB melts beneath the back-arc spreading center. Notably, the trace element compositions of the Kinan Seamount Chain alkali basalts are similar to that of the SSM basalt. The involvement of an EM1 component in the mantle source is a minor but pervasive feature in both the Japan Sea and Shikoku Basin in the western Pacific.

5. Conclusions

The SSM basalt (8.3 Ma) formed ca. 7 Myr after termination of Japan Sea spreading (~15 Ma). The SSM basalt formed by low-degree partial melting of spinel peridotite, and was the result of post-back-arc extension magmatism in the Japan Sea. The SSM basalt mantle source is consistent with being DMM with a minor EM1-like contribution. Geochemical similarities between post-back-arc magmatism in the Japan Sea and Shikoku Basin of the Philippine Sea suggest the EM1 component is a minor, but widespread, component beneath the western Pacific.

Acknowledgements

We are grateful to Captain K. Miki, T. Kato, and the other crew members of the *R/V Wakashio Maru*, Captain H. Igarashi and crew members of the *R/V Tansei Maru*, and the scientists that participated on these cruises. Comments from two anonymous reviewers greatly improved this paper. We also thank T. Ishii for providing the studied sample. This work was

partly supported by Kanazawa University SAKIGAKE 2018 (TM) and Grants-in-Aid for Scientific Research from the Ministry of Education, Culture, Sports, Science, and Technology of Japan (Nos 16H05741 and 19H01990; TM).

References

- 5 Allan, J. F. and Gorton, M. P.: Geochemistry of Igneous Rocks from Legs 127 and 128, Sea of Japan, in Proceedings of the Ocean Drilling Program, 127/128 Scientific Results, vol. 127, pp. 905–929, Ocean Drilling Program., 1992.
- Basu, A. R., Wang Junwen, Huang Wankang, Xie Guanghong and Tatsumoto, M.: Major element, REE, and Pb, Nd and Sr isotopic geochemistry of Cenozoic volcanic rocks of eastern China: implications for their origin from suboceanic-type mantle reservoirs, *Earth Planet. Sci. Lett.*, 105(1–3), 149–169, doi:10.1016/0012-821X(91)90127-4, 1991.
- 10 Choi, S. H., Mukasa, S. B., Kwon, S. and Andronikov, A. V: Sr, Nd, Pb and Hf isotopic compositions of late Cenozoic alkali basalts in South Korea: Evidence for mixing between the two dominant asthenospheric mantle domains beneath East Asia, *Chem. Geol.*, 232(3–4), 134–151, doi:10.1016/j.chemgeo.2006.02.014, 2006.
- Chung, S.: Trace Element and Isotope Characteristics of Cenozoic Basalts around the Tanlu Fault with Implications for the Eastern Plate Boundary between North and South China, *J. Geol.*, 107(3), 301–312, doi:10.1086/314348, 1999.
- Cousens, B. L. and Allan, J. F.: A Pb,Sr,Nd isotopic study of basaltic rocks from the sea of japan, legs 127/128, *Proc. Ocean Drill. Program, Sci. Results*, 127, 805–817, 1992.
- 15 Dostal, J., Zhai, M. and Dupuy, C.: Geochemistry and origin of Pliocene alkali basaltic lavas from Anhui-Jiangsu, eastern China, *Geochem. J.*, 22(4), 165–176, doi:10.2343/geochemj.22.165, 1988.
- Ebisawa, N., Sumino, H., Okazaki, R., Takigami, Y., Hirano, N., Nagao, K. and Kaneoka, I.: Construction of I-Xe and ⁴⁰Ar-³⁹Ar dating system using a modified VG3600 Mass Spectrometer and the first I-Xe data obtained in Japan, *J. Mass Spectrom.*
- 20 *Soc. Jpn.*, 52(4), 219–229, doi:10.5702/massspec.52.219, 2004.
- Hart, S. R.: A large-scale isotope anomaly in the Southern Hemisphere mantle, *Nature*, 309(5971), 753–757, doi:10.1038/309753a0, 1984.
- Herzberg, C.: Identification of Source Lithology in the Hawaiian and Canary Islands: Implications for Origins, *J. Petrol.*, 52(1), 113–146, doi:10.1093/petrology/egg075, 2011.
- 25 Hirahara, Y., Kimura, J.-I., Senda, R., Miyazaki, T., Kawabata, H., Takahashi, T., Chang, Q., Vaglarov, B. S., Sato, T. and Kodaira, S.: Geochemical variations in Japan Sea back-arc basin basalts formed by high-temperature adiabatic melting of mantle metasomatized by sediment subduction components, *Geochemistry, Geophys. Geosystems*, 16(5), 1324–1347, doi:10.1002/2015GC005720, 2015.
- Hirano, N., Takahashi, E., Yamamoto, J., Abe, N., Ingle, S. P., Kaneoka, I., Hirata, T., Kimura, J.-I., Ishii, T., Ogawa, Y.,
- 30 Machida, S. and Suyehiro, K.: Volcanism in Response to Plate Flexure, *Science* (80-.), 313(5792), 1426–1428, doi:10.1126/science.1128235, 2006.
- Ichiyama, Y., Morishita, T., Tamura, A. and Arai, S.: Petrology of peridotite xenolith-bearing basaltic to andesitic lavas from the Shiribeshi Seamount, off northwestern Hokkaido, the Sea of Japan, *J. Asian Earth Sci.*, 76, 48–58, doi:10.1016/j.jseaes.2013.07.031, 2013.
- 35 [Ishida, Y., Morishita, T., Arai, S., Shirasaka, M.: Simultaneous *in-situ* multi-element analysis of minerals on thin section using LA-ICP-MS., *Sci. Rep. Kanazawa Univ.*, 48, 31-42, 2004.](#)
- Ishizuka, O., Yuasa, M., Taylor, R. N. and Sakamoto, I.: Two contrasting magmatic types coexist after the cessation of back-arc spreading, *Chem. Geol.*, 266(3–4), 274–296, doi:10.1016/j.chemgeo.2009.06.014, 2009.
- Iwamori, H.: Degree of melting and source composition of Cenozoic basalts in southwest Japan: Evidence for mantle upwelling
- 40 by flux melting, *J. Geophys. Res.*, 97(B7), 10983, doi:10.1029/92JB00737, 1992.
- Iwata, N.: Geochronological study of the Decan volcanism by the 40Ar-39Ar method, Ph.D Thesis, Univ. Tokyo, pp.168, 1997.
- Kaneoka, I. and Yuasa, M.: 40Ar-39Ar age studies on igneous rocks dredged from the central part of the Japan Sea., *Geochem. J.*, 22(5), 195–204, doi:10.2343/geochemj.22.195, 1988.
- 45 Kaneoka, I., Notsu, K., Takigami, Y., Fujioka, K. and Sakai, H.: Constraints on the evolution of the Japan Sea based on 40Ar-39Ar ages and Sr isotopic ratios for volcanic rocks of the Yamato Seamount chain in the Japan Sea, *Earth Planet. Sci. Lett.*, 97(1–2), 211–225, doi:10.1016/0012-821X(90)90109-B, 1990.

- Kaneoka, I., Takigami, Y., Takaoka, N., Yamashita, S. and Tamaki, K.: 50. 40Ar- 39Ar Analysis of Volcanic Rocks Recovered From the Japan Sea Floor : Constraints on the Age of Formation of the Japan Sea, Proc. Ocean Drill. Program, Sci. Results, 127/128(2), 819–836, 1992.
- 5 Kelemen, P. B., Yogodzinski, G. M. and Scholl, D. W.: Along-strike variation in the Aleutian Island Arc: Genesis of high Mg# andesite and implications for continental crust, *Geophys. Monogr.*, 138, 223–276, doi.org/10.1029/138GM11 2003.
- Kim, G. B. and Yoon, S.-H.: An insight into asymmetric back-arc extension: Tecto-magmatic evidences from the Ulleung Basin, the East Sea (Sea of Japan), *Tectonophysics*, 717, 182–192, doi:10.1016/j.tecto.2017.07.016, 2017.
- Kim, G. B., Yoon, S. H., Chough, S. K., Kwon, Y. K. and Ryu, B. J.: Seismic reflection study of acoustic basement in the South Korea Plateau, the Ulleung Interplain Gap, and the northern Ulleung Basin: Volcano-tectonic implications for Tertiary back-arc evolution in the southern East Sea, *Tectonophysics*, 504(1–4), 43–56, doi:10.1016/j.tecto.2011.02.004, 2011.
- 10 Kim, K. H., Tanaka, T., Nagao, K. and Jang, S. K.: Nd and Sr isotopes and K-Ar ages of the Ulreungdo alkali volcanic rocks in the East Sea, South Korea., *Geochem. J.*, 33(5), 317–341, doi:10.2343/geochemj.33.317, 1999.
- Kimura, M., Matsuda, T., Sato, H., Kaneoka, I., Tokuyama, H., Kuramoto, S., Oshida, A., Shimamura, K., Tamaki, K., Kinoshita, H. and Uyeda, S.: Report on DELP 1985 Cruises in the Japan Sea : Part VII : Topography and Geology of the Yamato Basin and Its Vicinity, *Bull. Earthq. Res. Institute, Univ. Tokyo*, 62(4), 447–483, 1987.
- 15 Lee, G. H., Kim, H. J., Suh, M. C. and Hong, J. K.: Crustal structure, volcanism, and opening mode of the Ulleung Basin, East Sea (Sea of Japan), *Tectonophysics*, 308(4), 503–525, doi:10.1016/S0040-1951(99)00113-4, 1999.
- Lee, M. J., Lee, J. I., Kwon, S.-T., Choo, M. K., Jeong, K.-S., Cho, J.-H. and Kim, S.-R.: Sr-Nd-Pb isotopic compositions of submarine alkali basalts recovered from the South Korea Plateau, East Sea, *Geosci. J.*, 15(2), 149–160, doi:10.1007/s12303-011-0017-9, 2011.
- 20 Longerich, H. P., Jackson, S. E. and Günther, D.: Laser ablation inductively coupled plasma mass spectrometric transient signal data acquisition and analyte concentration calculation, *J. Anal. At. Spectrom.*, 11(9), 899–904, doi:10.1039/JA9961100899, 1996.
- Machida, S., Hirano, N. and Kimura, J.: Evidence for recycled plate material in Pacific upper mantle unrelated to plumes, *Geochim. Cosmochim. Acta*, 73(10), 3028–3037, doi:10.1016/j.gca.2009.01.026, 2009.
- 25 Machida, S., Hirano, N., Sumino, H., Hirata, T., Yoneda, S. and Kato, Y.: Petit-spot geology reveals melts in upper-most asthenosphere dragged by lithosphere, *Earth Planet. Sci. Lett.*, 426, 267–279, doi:10.1016/J.EPSL.2015.06.018, 2015.
- Martinez, F., Goodliffe, a M. and Taylor, B.: Metamorphic core complex formation by density inversion and lower-crust extrusion., *Nature*, 411(6840), 930–934, doi:10.1038/35082042, 2001.
- 30 Miyake, Y.: Geochemistry of igneous rocks of Shimane Peninsula, formed within a Miocene back-arc rifting zone at the Japan Sea margin., *Geochem. J.*, 28(6), 451–472, doi:10.2343/geochemj.28.451, 1994.
- Miyashiro, A.: Nature of alkalic volcanic rock series, *Contrib. to Mineral. Petrol.*, 66(1), 91–104, doi:10.1007/BF00376089, 1978.
- Miyazaki, T., Kimura, J.-I., Senda, R., Vaglarov, B. S., Chang, Q., Takahashi, T., Hirahara, Y., Hauff, F., Hayasaka, Y., Sano, S., Shimoda, G., Ishizuka, O., Kawabata, H., Hirano, N., Machida, S., Ishii, T., Tani, K. and Yoshida, T.: Missing western half of the Pacific Plate: Geochemical nature of the Izanagi-Pacific Ridge interaction with a stationary boundary between the Indian and Pacific mantles, *Geochemistry, Geophys. Geosystems*, 16(9), 3309–3332, doi:10.1002/2015GC005911, 2015.
- 35 Miyazaki, T., Shibata, T. and Yoshikawa, M.: New synthesis method of silica-gel for lead isotope analysis., *Proc. Japan Acad. Ser. B*, 79B(2), 58–62, doi:10.2183/pjab.79B.58, 2003.
- 40 Nakamura, E., Campbell, I. H., McCulloch, M. T. and Sun, S.-S.: Chemical geodynamics in a back arc region around the Sea of Japan: Implications for the genesis of alkaline basalts in Japan, Korea, and China, *J. Geophys. Res. Solid Earth*, 94(B4), 4634–4654, doi:10.1029/JB094iB04p04634, 1989.
- Nakamura, E., McCulloch, M. T. and Campbell, I. H.: Chemical geodynamics in the back-arc region of Japan based on the trace element and SrNd isotopic compositions, *Tectonophysics*, 174(3–4), 207–233, doi:10.1016/0040-1951(90)90323-Z, 1990.
- 45 Nicholls, I. A.: A direct fusion method of preparing silicate rock glasses for energy-dispersive electron microprobe analysis, *Chem. Geol.*, 14(3), 151–157, doi:10.1016/0009-2541(74)90124-7, 1974.
- Ninomiya, C., Arai, S., Ishii, T., Sea, T. and Sea, T.: Peridotite xenoliths from the Takeshima seamount, Japan: an insight into the upper mantle beneath the Sea of Japan, *Japanese Mag. Mineral. Petrol. Sci.*, 36(1), 1–14, doi:10.2465/gkk.36.1, 2007.

- Nohda, S., Tatsumi, Y., Yamashita, S. and Fujii, T.: Nd and Sr isotopic study of Leg 127 basalts: implications for the evolution of the Japan Sea backarc basin, *Proc., Sci. results, ODP, Legs 127/128, Japan Sea, 127*, 899–904, 1992.
- Ohara, Y.: Mantle process beneath Philippine Sea back-arc spreading ridges: A synthesis of peridotite petrology and tectonics, *Isl. Arc*, 15(1), 119–129, doi:10.1111/j.1440-1738.2006.00515.x, 2006.
- 5 Park, K., Park, J., Cheong, C. and Oh, C. W.: Sr, Nd and Pb Isotopic Systematics of the Cenozoic Basalts of the Korean Peninsula and Their Implications for the Permo- Triassic Continental Collision Boundary, (4), 529–538, 2005.
- Pearce, J. A. and Stern, R. J.: Origin of back-arc basin magmas: Trace element and isotope perspectives, pp. 63–86., 2006.
- Pearce, N. J. G., Perkins, W. T., Westgate, J. A., Gorton, M. P., Jackson, S. E., Neal, C. R. and Chenery, S. P.: A Compilation of New and Published Major and Trace Element Data for NIST SRM 610 and NIST SRM 612 Glass Reference Materials, *Geostand. Geoanalytical Res.*, 21(1), 115–144, doi:10.1111/j.1751-908X.1997.tb00538.x, 1997.
- 10 Pouclet, A., Lee, J.-S., Vidal, P., Cousens, B. and Bellon, H.: Cretaceous to Cenozoic volcanism in South Korea and in the Sea of Japan: magmatic constraints on the opening of the back-arc basin, *Geol. Soc. London, Spec. Publ.*, 81(1), 169–191, doi:10.1144/GSL.SP.1994.081.01.10, 1994.
- Ryan, W. B. F., S.M. Carbotte, J. Coplan, S. O'Hara, A. Melkonian, R. Arko, R.A. Weissen, V. Ferrini, A. Goodwillie, F. Nitsche, J. Bonczkowski, and R. Zensky (2009) Global Multi-Resolution Topography (GMRT) synthesis data set. *Geochemistry, Geophysics, Geosystems*, 10, Q03014, doi:10.1029/2008GC002332.
- 15 Saito, K.: Excess Ar in some metamorphic and plutonic rocks and reduction of thermal neutron-induced ⁴⁰Ar by Cd shielding, *Sci. Rep. Res. Institutes, Tohoku Univ.*, A40, 185–189, 1994.
- Sato, H., Machida, S., Kanayama, S., Taniguchi, H. and Ishii, T.: Geochemical and isotopic characteristics of the Kinan Seamount Chain in the Shikoku Basin., *Geochem. J.*, 36(5), 519–526, doi:10.2343/geochemj.36.519, 2002.
- 20 Sato H (2010) Quantitative analyses with X-ray fluorescence analyzer of major elements for rock samples. *Bulletin of the Institute of Natural Sciences, Senshu University*, No. 41, pp 15–23 (in Japanese)
- Sato, T., No, T., Kodaira, S., Takahashi, N. and Kaneda, Y.: Seismic constraints of the formation process on the back-arc basin in the southeastern Japan Sea, *J. Geophys. Res. Solid Earth*, 119(3), 1563–1579, doi:10.1002/2013JB010643, 2014.
- 25 Shibata, T. and Yoshikawa, M.: Precise Isotope Determination of Trace Amounts of Nd in Magnesium-rich Samples, *J. Mass Spectrom. Soc. Jpn.*, 52(6), 317–324, doi:10.5702/massspec.52.317, 2004.
- Shimamura, K., Jung, K.-K., S., K., Ashi, J., Oshida, A., Tokuyama, H. and Taira, A.: Report on DELP 1985 Cruises in the Japan Sea: Part VI: Preliminary Report on the sediment samples obtained during DELP 85 WAKASHIO Leg II and KT 85-15 cruises, *Bull. Earthq. Res. Inst.*, 62(4), 447–483, 1987.
- 30 Stern, C. R., Frey, F. A., Futa, K., Zartman, R. E., Peng, Z. and Kurtis Kyser, T.: Trace-element and Sr, Nd, Pb, and O isotopic composition of Pliocene and Quaternary alkali basalts of the Patagonian Plateau lavas of southernmost South America, *Contrib. to Mineral. Petrol.*, 104(3), 294–308, doi:10.1007/BF00321486, 1990.
- Stoll, B., Jochum, K. P., Herwig, K., Amini, M., Flanz, M., Kreuzburg, B., Kuzmin, D., Willbold, M. and Enzweiler, J.: An Automated Iridium-Strip Heater for LA-ICP-MS Bulk Analysis of Geological Samples, *Geostand. Geoanalytical Res.*, 32(1), 5–26, doi:10.1111/j.1751-908X.2007.00871.x, 2008.
- 35 Sun, S. -s. and McDonough, W. F.: Chemical and isotopic systematics of oceanic basalts: implications for mantle composition and processes, *Geol. Soc. London, Spec. Publ.*, 42(1), 313–345, doi:10.1144/GSL.SP.1989.042.01.19, 1989.
- Tamaki, K.: Geological structure of the Japan Sea and its tectonic implications, *Bull. Geol. Surv. Japan*, 39(5), 269–365, 1988.
- Tamaki, K. and Honza, E.: Incipient subduction and deduction along the eastern margin of the Japan Sea, *Tectonophysics*, 119(1–4), 381–406, doi:10.1016/0040-1951(85)90047-2, 1985.
- 40 Tamaki, K., Suyehiro, K., Allan, J., Ingle, J. C. J. and Pisciotto, K. A.: Tectonic Synthesis and Implications of Japan Sea ODP Drilling, in *Proceedings of the Ocean Drilling Program, 127/128 Part 2 Scientific Results*, vol. 127, pp. 1333–1348, Ocean Drilling Program., 1992.
- Tamura, A., Akizawa, N., Otsuka, R., Kanayama, K., Python, M., Morishita, T., Arai, S., Amura, A. K. T., Kizawa, N. O. A., Tsuka, R. Y. O. O., Anayama, K. Y. K. and Ython, M. A. P.: Measurement of whole-rock trace-element composition by flux-free fused glass and LA-ICP-MS: evaluation of simple and rapid routine work, *Geochem. J.*, 49(3), doi:10.2343/geochemj.2.0353, 2015.
- Tatsumoto, M. and Nakamura, Y.: DUPAL anomaly in the Sea of Japan: Pb, Nd, and Sr isotopic variations at the eastern Eurasian continental margin, *Geochim. Cosmochim. Acta*, 55(12), 3697–3708, doi:10.1016/0016-7037(91)90068-G, 1991.
- 50 Uto, K., Takahashi, E., Nakamura, E. and Kaneoka, I.: Geochronology of alkali volcanism in Oki-Dogo Island, Southwest

- Japan: Geochemical evolution of basalts related to the opening of the Japan Sea., *Geochem. J.*, 28(6), 431–449, doi:10.2343/geochemj.28.431, 1994.
- Uto, K., Hoang, N. and Matsui, K.: Cenozoic lithospheric extension induced magmatism in Southwest Japan, , 393, 281–299, doi:10.1016/j.tecto.2004.07.039, 2004.
- 5 Uyeda, S. and Kanamori, H.: Back-arc opening and the mode of subduction, *J. Geophys. Res.*, 84(B3), 1049, doi:10.1029/JB084iB03p01049, 1979.
- Xu, Y., Chung, S. L., Jahn, B. M. and Wu, G.: Petrologic and geochemical constraints on the petrogenesis of Permian-Triassic Emeishan flood basalts in southwestern China, *Lithos*, 58(3–4), 145–168, doi:10.1016/S0024-4937(01)00055-X, 2001.
- 10 Yan, J. and Zhao, J.-X.: Cenozoic alkali basalts from Jingpohu, NE China: The role of lithosphere–asthenosphere interaction, *J. Asian Earth Sci.*, 33(1–2), 106–121, doi:10.1016/J.JSEAES.2007.11.001, 2008.
- Yoon, S. H., Sohn, Y. K. and Chough, S. K.: Tectonic, sedimentary, and volcanic evolution of a back-arc basin in the East Sea (Sea of Japan), *Mar. Geol.*, 352, 70–88, doi:10.1016/j.margeo.2014.03.004, 2014.
- York, D.: Least squares fitting of a straight line with correlated errors, *Earth Planet. Sci. Lett.*, 5, 320–324, doi:10.1016/S0012-821X(68)80059-7, 1968.
- 15 Yoshikawa, M. and Nakamura, E.: Precise isotope determination of trace amounts of Sr in magnesium-rich samples, *J. Mineral. Petrol. Econ. Geol.*, 88(6), 548–561 [online] Available from: <http://cat.inist.fr/?aModele=afficheN&cpsid=3967931>, 1993.
- Zhang, Z., Feng, C., Li, Z., Li, S., Xin, Y., Li, Z. and Wang, X.: Petrochemical study of the Jingpohu Holocene alkali basaltic rocks, northeastern China., *Geochem. J.*, 36(2), 133–153, doi:10.2343/geochemj.36.133, 2002.
- Zou, H., Zindler, A., Xu, X. and Qi, Q.: Major, trace element, and Nd, Sr and Pb isotope studies of Cenozoic basalts in SE 20 China: mantle sources, regional variations, and tectonic significance, *Chem. Geol.*, 171(1–2), 33–47, doi:10.1016/S0009-2541(00)00243-6, 2000.
- Allan, J. F. and Gorton, M. P.: Geochemistry of Igneous Rocks from Legs 127 and 128, Sea of Japan, in *Proceedings of the Ocean Drilling Program, 127/128 Scientific Results*, vol. 127, pp. 905–929, Ocean Drilling Program., 1992.
- 25 Basu, A. R., Wang Junwen, Huang Wankang, Xie Guanghong and Tatsumoto, M.: Major element, REE, and Pb, Nd and Sr isotopic geochemistry of Cenozoic volcanic rocks of eastern China: implications for their origin from suboceanic-type mantle reservoirs, *Earth Planet. Sci. Lett.*, 105(1–3), 149–169, doi:10.1016/0012-821X(91)90127-4, 1991.
- Choi, S. H., Mukasa, S. B., Kwon, S. and Andronikov, A. V.: Sr, Nd, Pb and Hf isotopic compositions of late Cenozoic alkali basalts in South Korea: Evidence for mixing between the two dominant asthenospheric mantle domains beneath East Asia, *Chem. Geol.*, 232(3–4), 134–151, doi:10.1016/j.chemgeo.2006.02.014, 2006.
- 30 Chung, S.: Trace Element and Isotope Characteristics of Cenozoic Basalts around the Tanlu Fault with Implications for the Eastern Plate Boundary between North and South China, *J. Geol.*, 107(3), 301–312, doi:10.1086/314348, 1999.
- Cousens, B. L. and Allan, J. F.: A Pb,Sr,Nd isotopic study of basaltic rocks from the sea of japan, legs 127/128, *Proc. Ocean Drill. Program, Sci. Results*, 127, 805–817, 1992.
- Dostal, J., Zhai, M. and Dupuy, C.: Geochemistry and origin of Pliocene alkali basaltic lavas from Anhui-Jiangsu, eastern 35 China, *Geochem. J.*, 22(4), 165–176, doi:10.2343/geochemj.22.165, 1988.
- Ebisawa, N., Sumino, H., Okazaki, R., Takigami, Y., Hirano, N., Nagao, K. and Kaneoka, I.: Construction of I-Xe and ⁴⁰Ar-³⁹Ar dating system using a modified VG3600 Mass Spectrometer and the first I-Xe data obtained in Japan, *J. Mass Spectrom. Soc. Jpn.*, 52(4), 219–229, doi:10.5702/massspec.52.219, 2004.
- Hart, S. R.: A large-scale isotope anomaly in the Southern Hemisphere mantle, *Nature*, 309(5971), 753–757, 40 doi:10.1038/309753a0, 1984.
- Hirahara, Y., Kimura, J.-I., Senda, R., Miyazaki, T., Kawabata, H., Takahashi, T., Chang, Q., Vaglarov, B. S., Sato, T. and Kodaira, S.: Geochemical variations in Japan Sea back-arc basin basalts formed by high-temperature adiabatic melting of mantle metasomatized by sediment subduction components, *Geochemistry, Geophys. Geosystems*, 16(5), 1324–1347, doi:10.1002/2015GC005720, 2015.
- 45 Hirano, N., Takahashi, E., Yamamoto, J., Abe, N., Ingle, S. P., Kaneoka, I., Hirata, T., Kimura, J.-I., Ishii, T., Ogawa, Y., Machida, S. and Suyehiro, K.: Volcanism in Response to Plate Flexure, *Science (80-.)*, 313(5792), 1426–1428, doi:10.1126/science.1128235, 2006.
- Ishida, Y., Morishita, T., Arai, S., Shirasaka, M.: Simultaneous *in-situ* multi-element analysis of minerals on thin section using LA-ICP-MS., *Sci. Rep. Kanazawa Univ.*, 48, 31-42, 2004.

- Ishizuka, O., Yuasa, M., Taylor, R. N. and Sakamoto, I.: Two contrasting magmatic types coexist after the cessation of back-arc spreading, *Chem. Geol.*, 266(3–4), 274–296, doi:10.1016/j.chemgeo.2009.06.014, 2009.
- Iwamori, H.: Degree of melting and source composition of Cenozoic basalts in southwest Japan: Evidence for mantle upwelling by flux melting, *J. Geophys. Res.*, 97(B7), 10983, doi:10.1029/92JB00737, 1992.
- 5 Iwata, N.: Geochronological study of the Decan volcanism by the 40Ar-39Ar method, Ph.D Thesis, Univ. Tokyo, pp.168, 1997.
- Kaneoka, I. and Yuasa, M.: 40Ar-39Ar age studies on igneous rocks dredged from the central part of the Japan Sea., *Geochem. J.*, 22(5), 195–204, doi:10.2343/geochemj.22.195, 1988.
- Kaneoka, I., Notsu, K., Takigami, Y., Fujioka, K. and Sakai, H.: Constraints on the evolution of the Japan Sea based on 10 40Ar- 39Ar ages and Sr isotopic ratios for volcanic rocks of the Yamato Seamount chain in the Japan Sea, *Earth Planet. Sci. Lett.*, 97(1–2), 211–225, doi:10.1016/0012-821X(90)90109-B, 1990.
- Kaneoka, I., Takigami, Y., Takaoka, N., Yamashita, S. and Tamaki, K.: 50. 40Ar- 39Ar Analysis of Volcanic Rocks Recovered From the Japan Sea Floor : Constraints on the Age of Formation of the Japan Sea, *Proc. Ocean Drill. Program, Sci. Results*, 127/128(2), 819–836, 1992.
- 15 Kelemen, P. B., Yogodzinski, G. M. and Scholl, D. W.: Along-strike variation in the Aleutian Island Arc: Genesis of high Mg# andesite and implications for continental crust, *Geophys. Monogr.*, 138, 223–276, doi.org/10.1029/138GM11 2003.
- Kim, G. B. and Yoon, S.-H.: An insight into asymmetric back-arc extension: Tecto-magmatic evidences from the Ulleung Basin, the East Sea (Sea of Japan), *Tectonophysics*, 717, 182–192, doi:10.1016/j.tecto.2017.07.016, 2017.
- Kim, G. B., Yoon, S. H., Chough, S. K., Kwon, Y. K. and Ryu, B. J.: Seismic reflection study of acoustic basement in the 20 South Korea Plateau, the Ulleung Interplain Gap, and the northern Ulleung Basin: Volcano-tectonic implications for Tertiary back-arc evolution in the southern East Sea, *Tectonophysics*, 504(1–4), 43–56, doi:10.1016/j.tecto.2011.02.004, 2011a.
- Kim, G. B., Yoon, S. H., Chough, S. K., Kwon, Y. K. and Ryu, B. J.: Seismic reflection study of acoustic basement in the South Korea Plateau, the Ulleung Interplain Gap, and the northern Ulleung Basin: Volcano-tectonic implications for Tertiary back-arc evolution in the southern East Sea, *Tectonophysics*, 504(1–4), 43–56, doi:10.1016/J.TECTO.2011.02.004, 2011b.
- 25 Kim, K. H., Tanaka, T., Nagao, K. and Jang, S. K.: Nd and Sr isotopes and K-Ar ages of the Ulreungdo alkali volcanic rocks in the East Sea, South Korea., *Geochem. J.*, 33(5), 317–341, doi:10.2343/geochemj.33.317, 1999.
- Kimura, M., Matsuda, T., Sato, H., Kaneoka, I., Tokuyama, H., Kuramoto, S., Oshida, A., Shimamura, K., Tamaki, K., Kinoshita, H. and Uyeda, S.: Report on DELP 1985 Cruises in the Japan Sea : Part VII : Topography and Geology of the Yamato Basin and Its Vicinity, *Bull. Earthq. Res. Institute, Univ. Tokyo*, 62(4), 447–483, 1987.
- 30 Lee, G. H., Kim, H. J., Suh, M. C. and Hong, J. K.: Crustal structure, volcanism, and opening mode of the Ulleung Basin, East Sea (Sea of Japan), *Tectonophysics*, 308(4), 503–525, doi:10.1016/S0040-1951(99)00113-4, 1999.
- Lee, M. J., Lee, J. I., Kwon, S.-T., Choo, M. K., Jeong, K.-S., Cho, J.-H. and Kim, S.-R.: Sr-Nd-Pb isotopic compositions of submarine alkali basalts recovered from the South Korea Plateau, East Sea, *Geosci. J.*, 15(2), 149–160, doi:10.1007/s12303-011-0017-9, 2011.
- 35 Longerich, H. P., Jackson, S. E. and Günther, D.: Laser ablation inductively coupled plasma mass spectrometric transient signal data acquisition and analyte concentration calculation, *J. Anal. At. Spectrom.*, 11(9), 899–904, doi:10.1039/JA9961100899, 1996.
- Machida, S., Hirano, N. and Kimura, J.: Evidence for recycled plate material in Pacific upper mantle unrelated to plumes, *Geochim. Cosmochim. Acta*, 73(10), 3028–3037, doi:10.1016/j.gca.2009.01.026, 2009.
- 40 Machida, S., Hirano, N., Sumino, H., Hirata, T., Yoneda, S. and Kato, Y.: Petit-spot geology reveals melts in upper-most asthenosphere dragged by lithosphere, *Earth Planet. Sci. Lett.*, 426, 267–279, doi:10.1016/J.EPSL.2015.06.018, 2015.
- Miyake, Y.: Geochemistry of igneous rocks of Shimane Peninsula, formed within a Miocene back-arc rifting zone at the Japan Sea margin., *Geochem. J.*, 28(6), 451–472, doi:10.2343/geochemj.28.451, 1994.
- Miyashiro, A.: Nature of alkalic volcanic rock series, *Contrib. to Mineral. Petrol.*, 66(1), 91–104, doi:10.1007/BF00376089, 45 1978.
- Miyazaki, T., Kimura, J.-I., Senda, R., Vaglarov, B. S., Chang, Q., Takahashi, T., Hirahara, Y., Hauff, F., Hayasaka, Y., Sano, S., Shimoda, G., Ishizuka, O., Kawabata, H., Hirano, N., Machida, S., Ishii, T., Tani, K. and Yoshida, T.: Missing western half of the Pacific Plate: Geochemical nature of the Izanagi-Pacific Ridge interaction with a stationary boundary between the Indian and Pacific mantles, *Geochemistry, Geophys. Geosystems*, 16(9), 3309–3332, 50 doi:10.1002/2015GC005911, 2015.

- Miyazaki, T., Shibata, T. and Yoshikawa, M.: New synthesis method of silica-gel for lead isotope analysis., Proc. Japan Acad. Ser. B, 79B(2), 58–62, doi:10.2183/pjab.79B.58, 2003.
- Nakamura, E., Campbell, I. H., McCulloch, M. T. and Sun, S.-S.: Chemical geodynamics in a back arc region around the Sea of Japan: Implications for the genesis of alkaline basalts in Japan, Korea, and China, *J. Geophys. Res. Solid Earth*, 94(B4), 4634–4654, doi:10.1029/JB094iB04p04634, 1989.
- 5 Nakamura, E., McCulloch, M. T. and Campbell, I. H.: Chemical geodynamics in the back-arc region of Japan based on the trace element and SrNd isotopic compositions, *Tectonophysics*, 174(3–4), 207–233, doi:10.1016/0040-1951(90)90323-Z, 1990.
- Nicholls, I. A.: A direct fusion method of preparing silicate rock glasses for energy-dispersive electron microprobe analysis, *Chem. Geol.*, 14(3), 151–157, doi:10.1016/0009-2541(74)90124-7, 1974.
- 10 Ninomiya, C., Arai, S., Ishii, T., Sea, T. and Sea, T.: Peridotite xenoliths from the Takeshima seamount, Japan: an insight into the upper mantle beneath the Sea of Japan, *Japanese Mag. Mineral. Petrol. Sci.*, 36(1), 1–14, doi:10.2465/gkk.36.1, 2007.
- Nohda, S., Tatsumi, Y., Yamashita, S. and Fujii, T.: Nd and Sr isotopic study of Leg 127 basalts: implications for the evolution of the Japan Sea backarc basin, Proc., Sci. results, ODP, Legs 127/128, Japan Sea, 127, 899–904, 1992.
- 15 Ohara, Y.: Mantle process beneath Philippine Sea back-arc spreading ridges: A synthesis of peridotite petrology and tectonics, *Isl. Arc*, 15(1), 119–129, doi:10.1111/j.1440-1738.2006.00515.x, 2006.
- Park, K., Park, J., Cheong, C. and Oh, C. W.: Sr, Nd and Pb Isotopic Systematics of the Cenozoic Basalts of the Korean Peninsula and Their Implications for the Permo- Triassic Continental Collision Boundary, (4), 529–538, 2005.
- 20 Pearce, J. A. and Stern, R. J.: Origin of back-arc basin magmas: Trace element and isotope perspectives, pp. 63–86., 2006.
- Pearce, N. J. G., Perkins, W. T., Westgate, J. A., Gorton, M. P., Jackson, S. E., Neal, C. R. and Chenery, S. P.: A Compilation of New and Published Major and Trace Element Data for NIST SRM 610 and NIST SRM 612 Glass Reference Materials, *Geostand. Geoanalytical Res.*, 21(1), 115–144, doi:10.1111/j.1751-908X.1997.tb00538.x, 1997.
- Pouclet, A., Lee, J.-S., Vidal, P., Cousens, B. and Bellon, H.: Cretaceous to Cenozoic volcanism in South Korea and in the Sea of Japan: magmatic constraints on the opening of the back-arc basin, *Geol. Soc. London, Spec. Publ.*, 81(1), 169–191, doi:10.1144/GSL.SP.1994.081.01.10, 1994.
- Ryan, W. B. F., S.M. Carbotte, J. Coplan, S. O'Hara, A. Melkonian, R. Arko, R.A. Weissel, V. Ferrini, A. Goodwillie, F. Nitsche, J. Bonczkowski, and R. Zemsky (2009) Global Multi-Resolution Topography (GMRT) synthesis data set. *Geochemistry, Geophysics, Geosystems*, 10, Q03014, doi:10.1029/2008GC002332.
- 30 Saito, K.: Excess Ar in some metamorphic and plutonic rocks and reduction of thermal neutron-induced ⁴⁰Ar by Cd shielding, *Sci. Rep. Res. Institutes, Tohoku Univ.*, A40, 185–189, 1994.
- Sato, H., Machida, S., Kanayama, S., Taniguchi, H. and Ishii, T.: Geochemical and isotopic characteristics of the Kinan Seamount Chain in the Shikoku Basin., *Geochem. J.*, 36(5), 519–526, doi:10.2343/geochemj.36.519, 2002.
- Sato H (2010) Quantitative analyses with X-ray fluorescence analyzer of major elements for rock samples. *Bulletin of the Institute of Natural Sciences, Senshu University*, No. 41, pp 15–23 (in Japanese)
- 35 Sato, T., No, T., Kodaira, S., Takahashi, N. and Kaneda, Y.: Seismic constraints of the formation process on the back-arc basin in the southeastern Japan Sea, *J. Geophys. Res. Solid Earth*, 119(3), 1563–1579, doi:10.1002/2013JB010643, 2014.
- SHIBATA, T. and YOSHIKAWA, M.: Precise Isotope Determination of Trace Amounts of Nd in Magnesium-rich Samples, *J. Mass Spectrom. Soc. Jpn.*, 52(6), 317–324, doi:10.5702/massspec.52.317, 2004.
- 40 Shimamura, K., Jiung, K.-K., S., K., Ashi, J., Oshida, A., Tokuyama, H. and Taira, A.: Report on DELP 1985 Cruises in the Japan Sea: Part VI: Preliminary Report on the sediment samples obtained during DELP 85 WAKASHIO Leg II and KT 85-15 cruises, *Bull. Earthq. Res. Inst.*, 62(4), 447–483, 1987.
- Stern, C. R., Frey, F. A., Futa, K., Zartman, R. E., Peng, Z. and Kurtis Kyser, T.: Trace-element and Sr, Nd, Pb, and O isotopic composition of Pliocene and Quaternary alkali basalts of the Patagonian Plateau lavas of southernmost South America, *Contrib. to Mineral. Petrol.*, 104(3), 294–308, doi:10.1007/BF00321486, 1990.
- 45 Stoll, B., Jochum, K. P., Herwig, K., Amini, M., Flanz, M., Kreuzburg, B., Kuzmin, D., Willbold, M. and Enzweiler, J.: An Automated Iridium-Strip Heater for LA-ICP-MS Bulk Analysis of Geological Samples, *Geostand. Geoanalytical Res.*, 32(1), 5–26, doi:10.1111/j.1751-908X.2007.00871.x, 2008.
- Sun, S. -s. and McDonough, W. F.: Chemical and isotopic systematics of oceanic basalts: implications for mantle composition and processes, *Geol. Soc. London, Spec. Publ.*, 42(1), 313–345, doi:10.1144/GSL.SP.1989.042.01.19, 1989.
- 50

- Tamaki, K.: Geological structure of the Japan Sea and its tectonic implications, *Bull. Geol. Surv. Japan*, 39(5), 269–365, 1988.
- Tamaki, K. and Honza, E.: Incipient subduction and deduction along the eastern margin of the Japan Sea, *Tectonophysics*, 119(1–4), 381–406, doi:10.1016/0040-1951(85)90047-2, 1985.
- 5 Tamaki, K., Suyehiro, K., Allan, J., Ingle, J. C. J. and Pisciotto, K. A.: Tectonic Synthesis and Implications of Japan Sea ODP Drilling, in *Proceedings of the Ocean Drilling Program, 127/128 Part 2 Scientific Results*, vol. 127, pp. 1333–1348, Ocean Drilling Program., 1992.
- Tamura, A., Akizawa, N., Otsuka, R., Kanayama, K., Python, M., Morishita, T., Arai, S., Amura, A. K. T., Kizawa, N. O. A., Tsuka, R. Y. O. O., Anayama, K. Y. K. and Ython, M. A. P.: Measurement of whole-rock trace-element composition by flux-free fused glass and LA-ICP-MS : evaluation of simple and rapid routine work, *Geochem. J.*, 49(3), doi:10.2343/geochemj.2.0353, 2015.
- 10 Tatsumoto, M. and Nakamura, Y.: DUPAL anomaly in the Sea of Japan: Pb, Nd, and Sr isotopic variations at the eastern Eurasian continental margin, *Geochim. Cosmochim. Acta*, 55(12), 3697–3708, doi:10.1016/0016-7037(91)90068-G, 1991.
- Uto, K., Takahashi, E., Nakamura, E. and Kaneoka, I.: Geochronology of alkali volcanism in Oki-Dogo Island, Southwest Japan: Geochemical evolution of basalts related to the opening of the Japan Sea., *Geochem. J.*, 28(6), 431–449, doi:10.2343/geochemj.28.431, 1994.
- 15 Uto, K., Hoang, N. and Matsui, K.: Cenozoic lithospheric extension induced magmatism in Southwest Japan, , 393, 281–299, doi:10.1016/j.tecto.2004.07.039, 2004.
- Uyeda, S. and Kanamori, H.: Back-arc opening and the mode of subduction, *J. Geophys. Res.*, 84(B3), 1049, doi:10.1029/JB084iB03p01049, 1979.
- 20 [Xu, Y., Chung, S. L., Jahn, B. M. and Wu, G.: Petrologic and geochemical constraints on the petrogenesis of Permian-Triassic Emeishan flood basalts in southwestern China, *Lithos*, 58\(3–4\), 145–168, doi:10.1016/S0024-4937\(01\)00055-X, 2001](#)
- Yan, J. and Zhao, J.-X.: Cenozoic alkali basalts from Jingpohu, NE China: The role of lithosphere–asthenosphere interaction, *J. Asian Earth Sci.*, 33(1–2), 106–121, doi:10.1016/J.JSEAES.2007.11.001, 2008.
- 25 Yoon, S. H., Sohn, Y. K. and Chough, S. K.: Tectonic, sedimentary, and volcanic evolution of a back-arc basin in the East Sea (Sea of Japan), *Mar. Geol.*, 352, 70–88, doi:10.1016/j.margeo.2014.03.004, 2014.
- York, D.: Least squares fitting of a straight line with correlated errors, *Earth Planet. Sci. Lett.*, 5, 320–324, doi:10.1016/S0012-821X(68)80059-7, 1968.
- 30 Yoshikawa, M. and Nakamura, E.: Precise isotope determination of trace amounts of Sr in magnesium-rich samples, *J. Mineral. Petrol. Econ. Geol.*, 88(6), 548–561 [online] Available from: <http://cat.inist.fr/?aModele=afficheN&cpsid=3967931>, 1993.
- Zhang, Z., Feng, C., Li, Z., Li, S., Xin, Y., Li, Z. and Wang, X.: Petrochemical study of the Jingpohu Holocene alkali basaltic rocks, northeastern China., *Geochem. J.*, 36(2), 133–153, doi:10.2343/geochemj.36.133, 2002.
- 35 Zou, H., Zindler, A., Xu, X. and Qi, Q.: Major, trace element, and Nd, Sr and Pb isotope studies of Cenozoic basalts in SE China: mantle sources, regional variations, and tectonic significance, *Chem. Geol.*, 171(1–2), 33–47, doi:10.1016/S0009-2541(00)00243-6, 2000.

Figure Captions

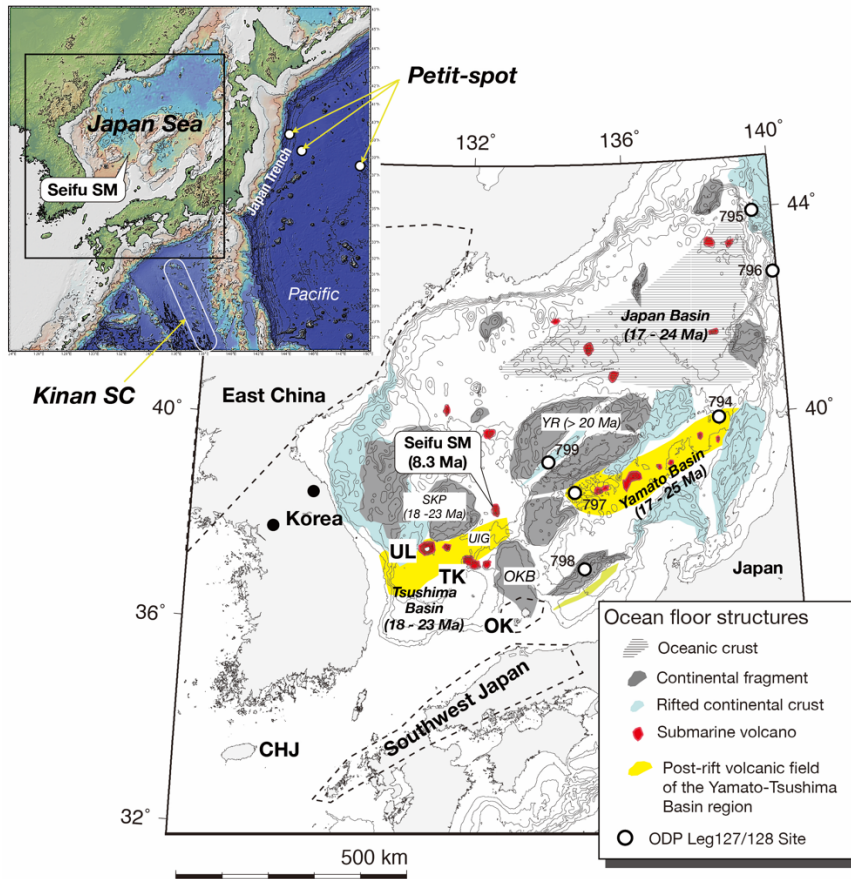


Figure 1: Location of Seifu Seamount (SSM) and ocean floor structure (YR = Yamato Rise; OKB = Oki Bank; SKP = South Korea Plateau; UIG = Ulleung Interplain Gap) in the Japan Sea (modified after Tamaki, 1988; Tamaki *et al.*, 1992; Kim *et al.*, 2011). Oceanic crust is only found in the Japan Basin. Note that Seifu Seamount is on extended continental crust (white area) in the Japan Basin, located between the seamounts (submarine volcanoes) of the UIG and Yamato Basin (Kim *et al.*, 2011). The ages of submarine volcanoes in this area are 17–10 Ma. Ulleung Island (UL), Takeshima Island (TK), Oki Island (OK), and Cheju Island (CHJ) are mainly Quaternary volcanoes (<5 Ma). Sites from ODP Legs 127 and 128 that recovered back-arc basin basaltic (BABB) rocks from Yamato Basin (Tamaki *et al.*, 1992) and other locations of basalts in the circum-Japan Sea area are shown (southwest Japan, including San-in and San-yo, northwest Kyushu, Korea, and east China). Petit-spot and the Kinan Seamount Chain are locations of alkali basalts on the Pacific and Philippine Sea plates, respectively (Hirano *et al.*, 2006; Ishizuka *et al.*, 2009). Age data are from Tamaki *et al.* (1992), Kaneoka *et al.* (1990, 1992), and Kim *et al.* (2011). The topographic and bathymetric maps were prepared using GeoMapApp (Ryan *et al.*, 2009).

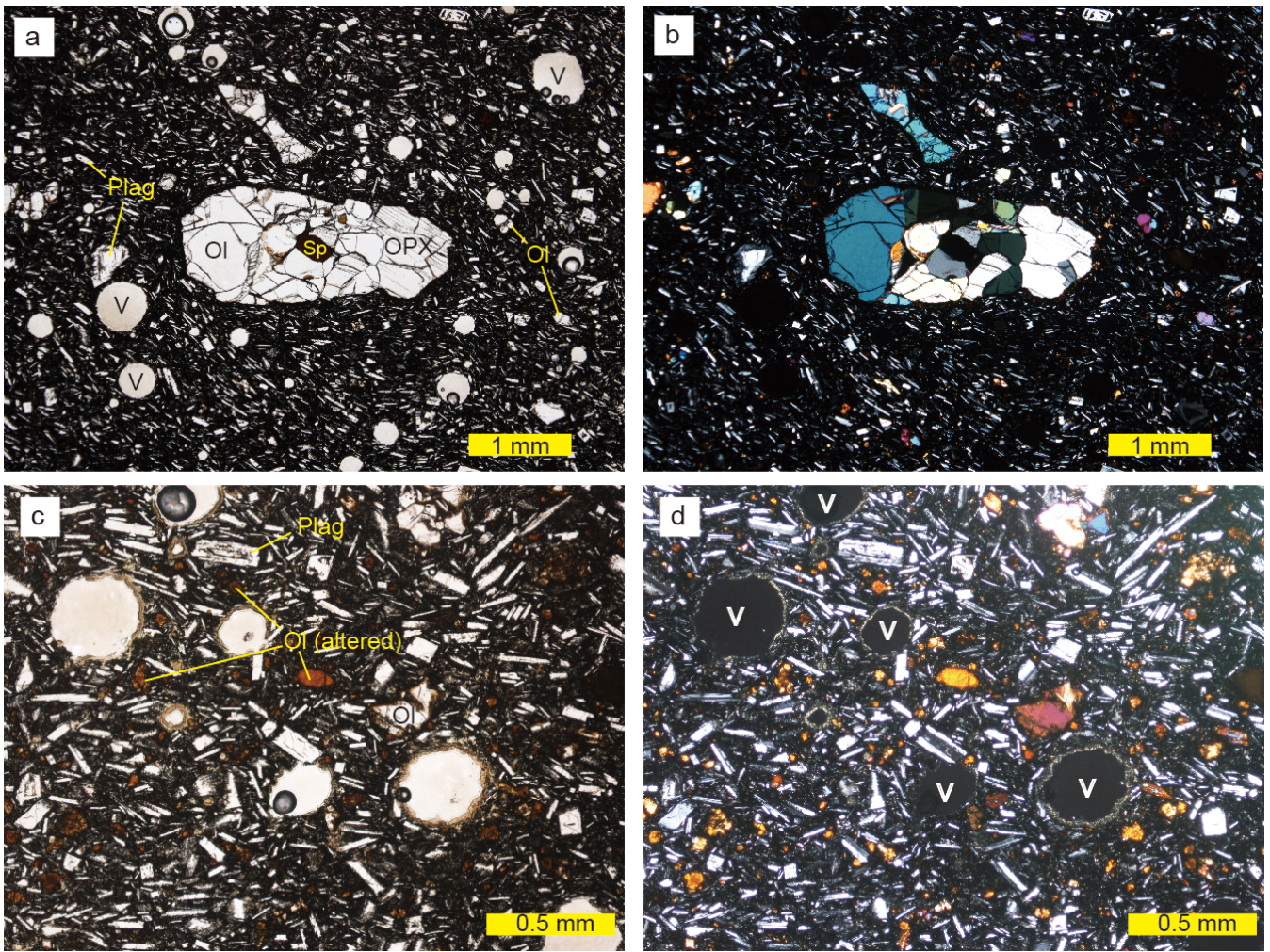


Figure 2: Photomicrographs of the studied Seifu Seamount basalt sample. (a) A peridotite xenolith in plane-polarized light. (b) Cross-polarized light image of (a). (c) Typical texture of the studied Seifu Seamount basalt in plane-polarized light. (d) Cross-polarized light image of (c). Ol = olivine, Plag = plagioclase, Sp = spinel, and V = vesicle.

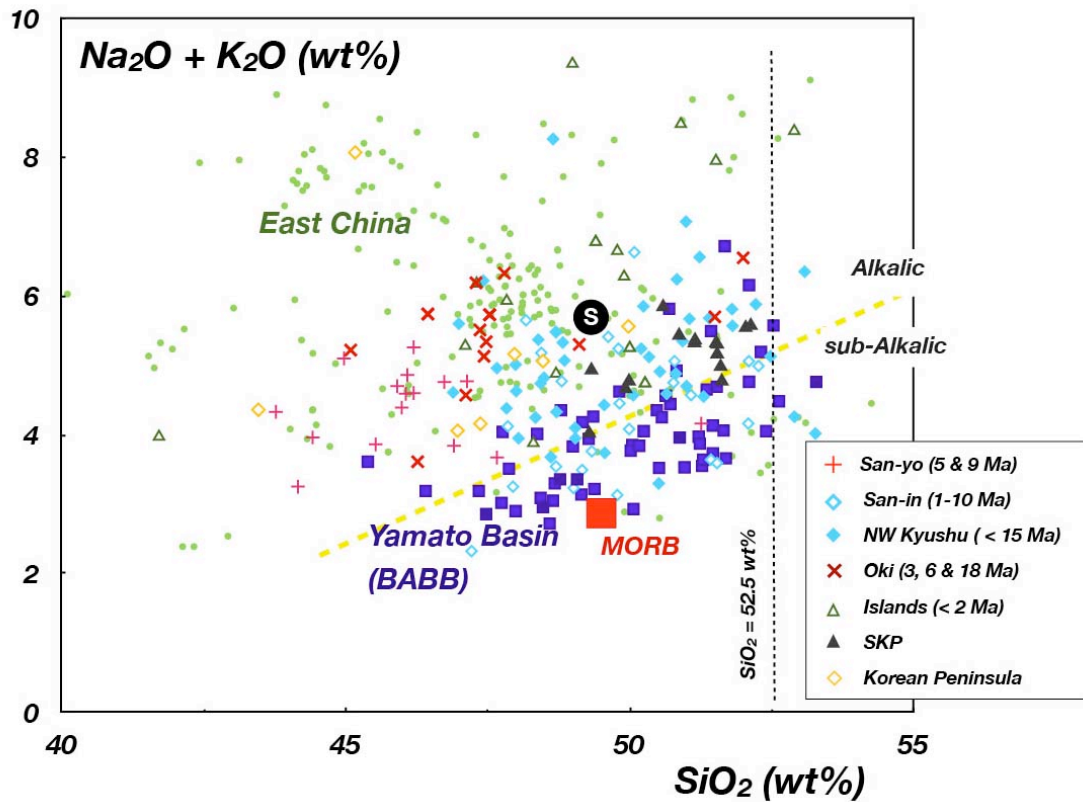


Figure 3: Whole-rock SiO_2 and total alkali ($\text{Na}_2\text{O} + \text{K}_2\text{O}$) contents of the basalt from Seifu Seamount (black circle annotated with S). The alkali and sub-alkali boundary lines are from Miyashiro (1978). Basalts from the circum-Japan Sea area are shown for comparison. BABB = back-arc basin basalt from the Yamato and Japan Basins. Data sources: Dostal *et al.* (1988), Nakamura *et al.* (1989, 1990), Allan and Gorton (1992), Iwamori (1992), Miyake (1994), Uto *et al.* (1994, 2004), Basu *et al.* (1991), Chung (1999), Kim *et al.* (1999), Pouclet *et al.* (1995), Zou *et al.* (2000), Zhang *et al.* (2002), Choi *et al.*, (2006), Yan and Zhao (2008), Lee *et al.* (2011), and Hirahara *et al.* (2015).

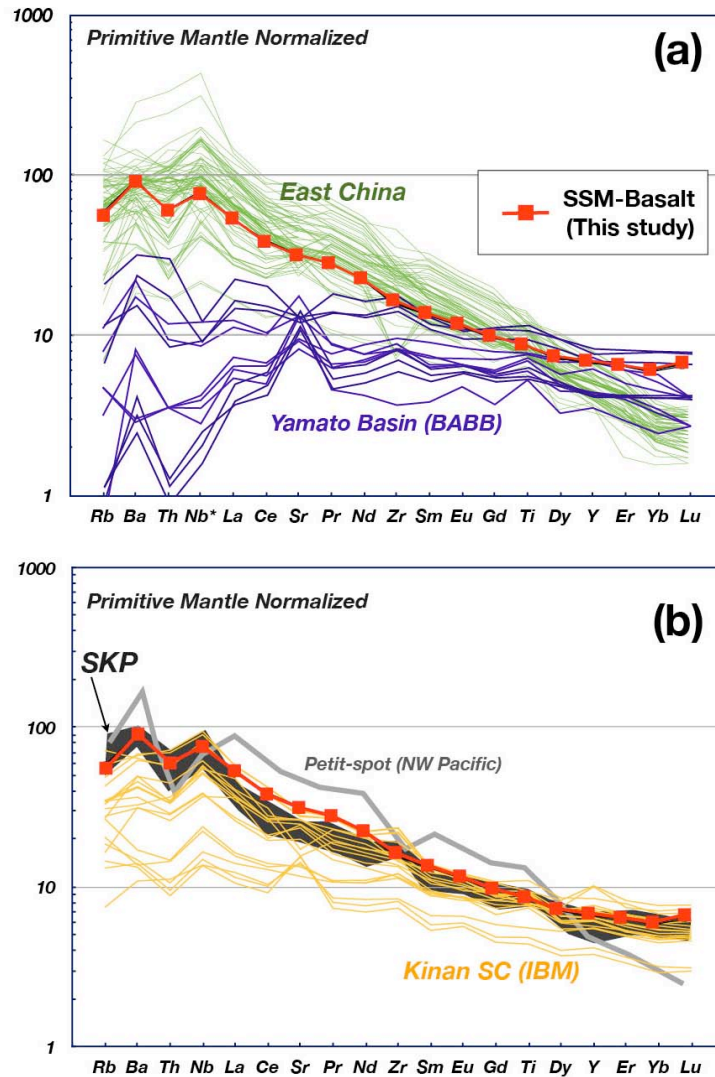


Figure 4: Primitive-mantle-normalized trace element pattern of the basalt from Seifu Seamount (SSM basalt). Normalizing values (primitive mantle) are from Sun and McDonough (1989). Representative basalts from the circum-Japan Sea area are shown for comparison (see Fig. 2 for the data sources). Back-arc basin basaltic (BABB) magmatism from Yamato Basin and alkali basalts from east China are shown in (a). Alkali basalts from the South Korean Plateau (SKP) (black field) are shown in (b). Data for the Kinan Seamount Chain in Shikoku Basin (Izu–Bonin–Mariana region) and petit-spot volcanoes in the western Pacific are from Ishizuka *et al.* (2009) and Hirano *et al.* (2006), respectively. In (a), Nb* was calculated by assuming that $Nb_{PM}/Ta_{PM} = 1$.

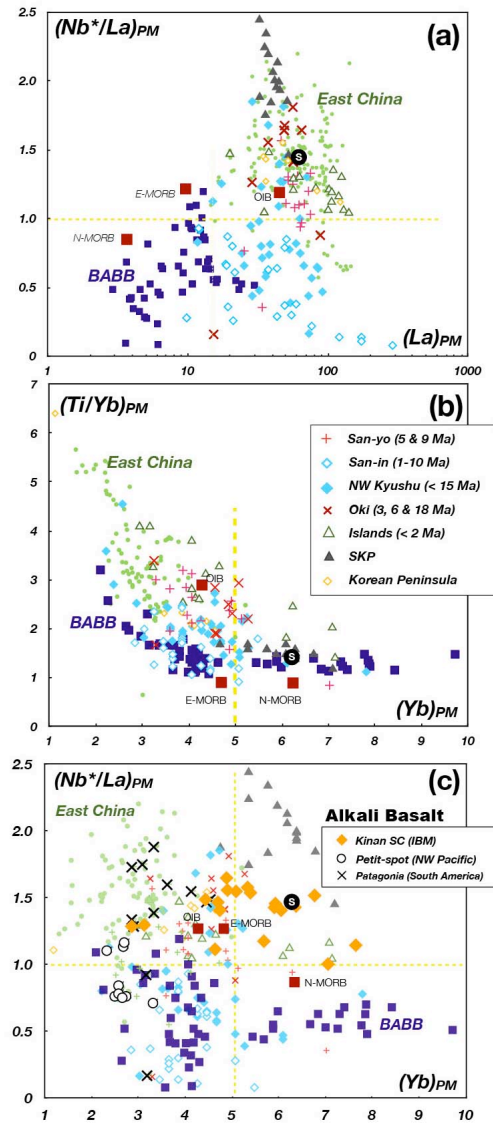


Figure 5: High-field-strength and rare earth element systematics of the SSM basalt (black circle annotated with S) and basalts from the circum-Japan Sea area with $\text{SiO}_2 < 52.5 \text{ wt.}\%$ (Ulleung, Jeju, and Takeshima islands; SKP = South Korean Plateau). Normalizing values (primitive mantle) and reference basalt data (MORB and OIB) were taken from Sun and McDonough (1989). (a) Nb vs. La ($\text{Nb}^* = \text{Nb}$ calculated by assuming that $\text{Nb}_{\text{PM}}/\text{Ta}_{\text{PM}} = 1$). (b) Ti vs. Yb (data sources are given in Fig. 3). (c) Discrimination of basalts based on the compositional relationships shown in (a) and (b). Note that high-Nb/La and high-Yb basalts have rarely been reported from the circum-Japan Sea area. Data for alkali basalts from the Kinan Seamount Chain in the Shikoku Basin (Izu–Bonin–Mariana region) (Ishizuka *et al.*, 2009), petit-spot volcanoes in the western Pacific (Hirano *et al.*, 2006), and Patagonia (South America) (Stern *et al.*, 1990) are shown for comparison.

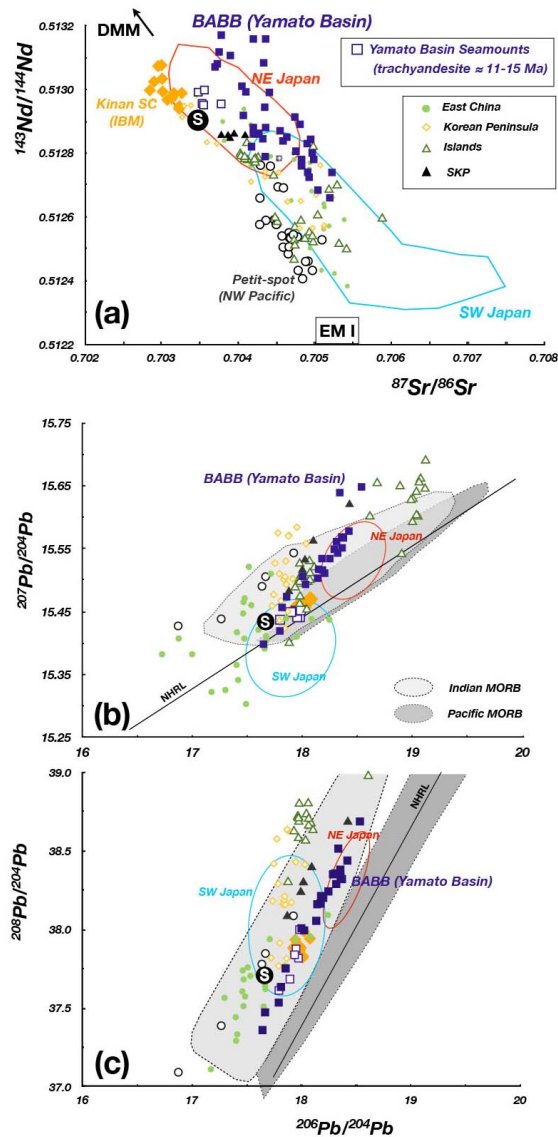


Figure 6: Nd–Sr–Pb isotopic compositions of the SSM basalt (black circle annotated with S). (a) Sr–Nd isotopic plot. (b) $^{206}\text{Pb}/^{204}\text{Pb}$ vs. $^{207}\text{Pb}/^{204}\text{Pb}$. (c) $^{206}\text{Pb}/^{204}\text{Pb}$ vs. $^{208}\text{Pb}/^{204}\text{Pb}$. Reference data and data fields were taken from Basu *et al.* (1991), Tatsumoto and Nakamura (1991), Cousens and Allan (1992), Nohda *et al.* (1992), Pouclet *et al.* (1994), Lee *et al.* (2001), Park *et al.* (2005), Choi *et al.* (2006), Ishizuka *et al.* (2009), Machida *et al.* (2009, 2015), and Hirahara *et al.* (2015). Indian and Pacific MORB fields in (b) and (c) are from Miyazaki *et al.* (2015). The Northern Hemisphere Reference Line (NHRL) is from Hart (1984).

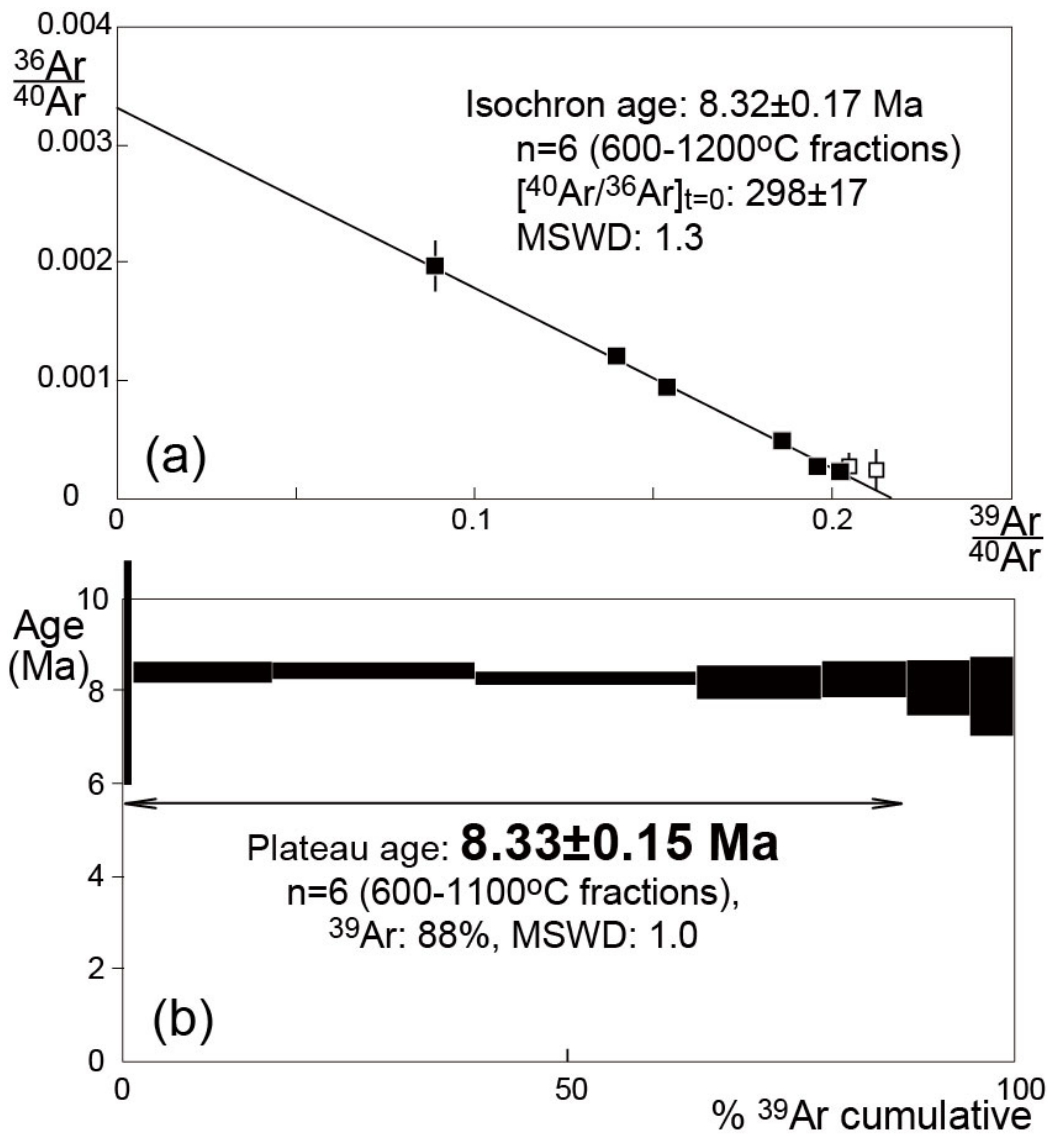


Figure 7: (a) Inverse isochron and (b) $^{40}\text{Ar}/^{39}\text{Ar}$ age spectrum. MSWD = mean-squared weighted deviation (MSWD = $\text{SUMS}/(n-2)$; York, 1968). All errors are 2σ .

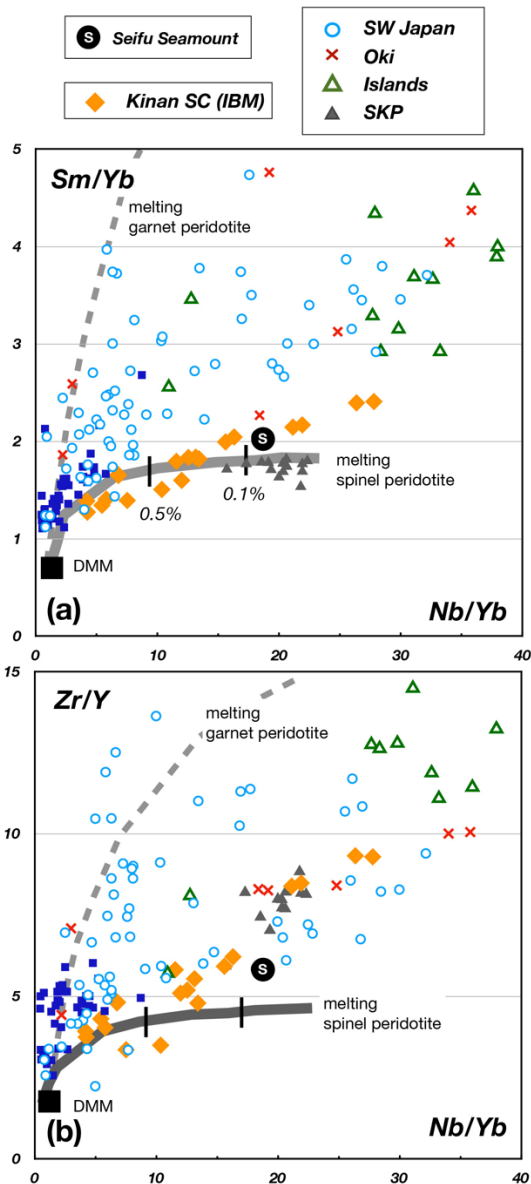


Figure 8: (a) Sm/Yb vs. Nb/Yb. (b) Zr/Y vs. Nb/Yb. Melting trends for garnet and spinel peridotites were calculated from a batch melting model and using the distribution coefficients from Kelemen *et al.* (2003). The depleted MORB mantle (DMM) composition is from Workman and Hart (2005). The southwestern Japan data are from San-yo, San-in, and northwest Kyushu (see Fig. 3 for the data sources).

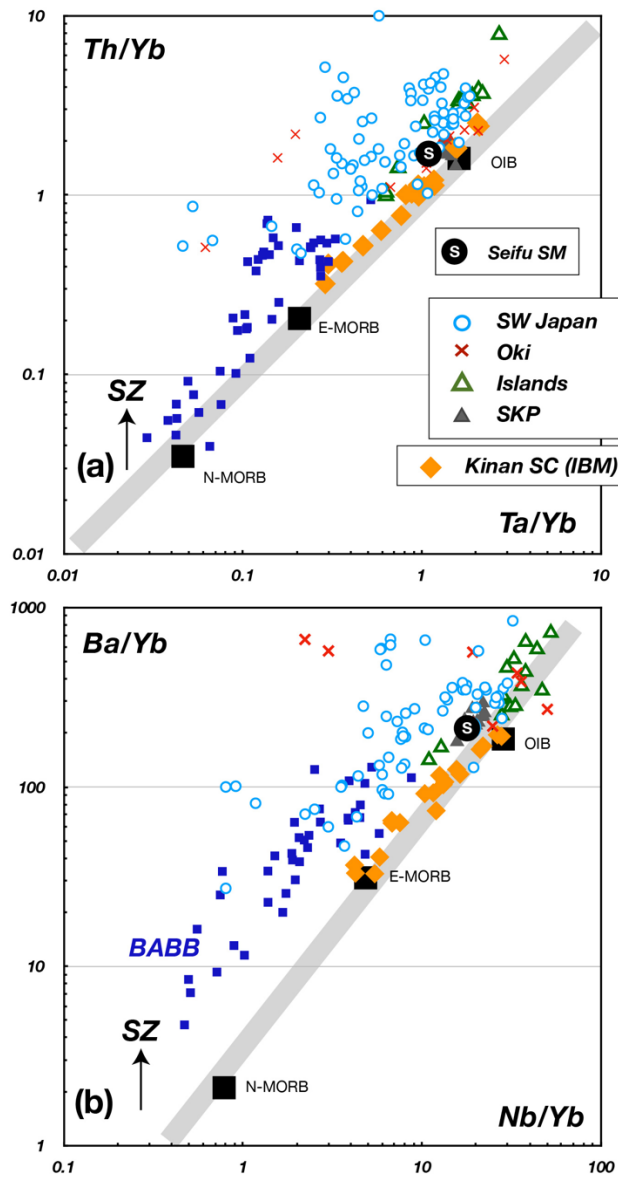


Figure 9: (a) Th/Yb vs. Ta/Yb. (b) Ba/Yb vs. Nb/Yb. The gray line represents the array of global MORB compositions and the arrow indicates the effect of subduction components (SZ) (Pearce and Stern, 2006). Compositions of N-MORB, E-MORB, and OIB are from Sun and McDonough (1989).

Table 1. Whole rock compositions of basalt from the Seifu Seamount

| in wt% | SSM-Basalt | | XRF | BHVO-2 | | |
|--------------------------------|------------|------------|--|--------|------------|------|
| | EPMA | | | EPMA | | |
| | AVE | SD (2/38)* | | AVE | SD (2/28)* | RD** |
| SiO ₂ | 49.02 | 1.05 | 49.21 | 48.57 | 1.03 | 0.97 |
| TiO ₂ | 1.86 | 0.06 | 1.79 | 2.84 | 0.1 | 1.04 |
| Al ₂ O ₃ | 17.89 | 0.53 | 18.22 | 12.95 | 0.34 | 0.96 |
| FeO* | 9.81 | 0.33 | 9.54 (Fe ₂ O ₃) | 12.14 | 0.43 | 1.06 |
| MnO | 0.21 | 0.07 | 0.19 | 0.2 | 0.07 | 1.19 |
| MgO | 6.39 | 0.2 | 6.24 | 7.45 | 0.25 | 1.03 |
| CaO | 8.88 | 0.2 | 8.51 | 11.77 | 0.24 | 1.03 |
| Na ₂ O | 4.05 | 0.13 | 3.67 | 2.31 | 0.12 | 1.04 |
| K ₂ O | 1.75 | 0.05 | 1.91 | 0.47 | 0.03 | 0.9 |
| P ₂ O ₅ | 0.49 | 0.09 | 0.74 | 0.22 | 0.06 | 0.82 |
| Total | 100.35 | | 100.02 | 98.92 | | |

| in µg/g | LA-ICP-MS | | LA-ICP-MS | | |
|---------|-----------|-----------|-----------|-----------|------|
| | AVE | SD (2/6)* | AVE | SD (2/4)* | RD** |
| Sc | 22.6 | 0.1 | 31.6 | 0.7 | 0.99 |
| Ti | 11696 | 128 | 16630 | 231 | 1.02 |
| V | 206 | 5 | 314 | 5 | 0.99 |
| Cr | 124 | 11 | 300 | 13 | 1.07 |
| Mn | 1608 | 22 | 1355 | 34 | 1.04 |
| Co | 42.0 | 1.1 | 45.7 | 1.0 | 1.01 |
| Ni | 143 | 6 | 128 | 4 | 1.08 |
| Rb | 36.4 | 0.8 | 9.0 | 0.2 | 0.98 |
| Sr | 678.8 | 6.0 | 407.2 | 7.4 | 1.03 |
| Y | 31.7 | 0.5 | 25.0 | 0.5 | 0.96 |
| Zr | 184.9 | 3.7 | 165.4 | 3.7 | 0.96 |
| Nb | 55.7 | 0.7 | 17.5 | 0.3 | 0.97 |
| Ba | 644.2 | 8.0 | 133.5 | 2.2 | 1.02 |
| La | 37.20 | 0.16 | 15 | 0.30 | 0.99 |
| Ce | 69.73 | 0.83 | 38.48 | 0.77 | 1.03 |
| Pr | 7.90 | 0.01 | 5.25 | 0.10 | 0.98 |
| Nd | 31.07 | 0.08 | 24.6 | 0.58 | 1.00 |
| Sm | 6.13 | 0.07 | 6.09 | 0.11 | 1.00 |
| Eu | 2.00 | 0.02 | 2.09 | 0.05 | 1.01 |
| Gd | 5.99 | 0.06 | 6.06 | 0.14 | 0.97 |
| Tb | 0.88 | 0.00 | 0.89 | 0.02 | 0.97 |
| Dy | 5.47 | 0.06 | 5.21 | 0.17 | 0.98 |
| Ho | 1.09 | 0.02 | 0.94 | 0.03 | 0.96 |
| Er | 3.21 | 0.03 | 2.5 | 0.10 | 0.99 |
| Tm | 0.45 | 0.01 | 0.31 | 0.01 | 0.94 |
| Yb | 3.01 | 0.04 | 1.96 | 0.06 | 0.98 |
| Lu | 0.50 | 0.01 | 0.3 | 0.03 | 1.08 |
| Hf | 5.09 | 0.28 | 4.54 | 0.37 | 1.04 |
| Ta | 3.25 | 0.04 | 1.11 | 0.02 | 0.98 |
| Th | 5.16 | 0.04 | 1.17 | 0.03 | 0.96 |
| U | 1.25 | 0.04 | 0.38 | 0.01 | 0.95 |

Major and trace-element data were overall averages of two fused glasses.

* standard deviation (SD) with numbers of analysis (glass/point).

The fused glass of BHVO-2 (USGS powdered reference material) was prepared and measured for quality control in the analysis. ** relative deviation (RD) to GeoReM preferred values.

Table 2. Isotopic compositions for basalt from the Seifu Seamount

| | leached* | 2σ | unleached | 2σ | Standard | 2σ | |
|--|-----------------|-----------------------------|------------------|-----------------------------|-----------------|-----------------------------|----------|
| ⁸⁷Sr/⁸⁶Sr | 0.703476 | 0.000015 | 0.703697 | 0.000014 | 0.710261 | 0.000018 | NIST 987 |
| ¹⁴³Nd/¹⁴⁴Nd | 0.512903 | 0.000019 | 0.512887 | 0.000007 | 0.511842 | 0.000018 | La Jolla |
| ²⁰⁶Pb/²⁰⁴Pb | 17.664 | 0.004 | 17.685 | 0.008 | 16.939 | 0.006 | NIST 981 |
| ²⁰⁷Pb/²⁰⁴Pb | 15.434 | 0.004 | 15.435 | 0.007 | 15.491 | 0.0048 | NIST 981 |
| ²⁰⁸Pb/²⁰⁴Pb | 37.708 | 0.010 | 37.739 | 0.017 | 36.721 | 0.026 | NIST 981 |

* washed by HCl.

Total procedural blanks for Sr, Nd and Pb were less than 100, 10 and 10 pg, respectively.