

Author's Response for production version of "Abutting faults: a case study of the evolution of strain at Courthouse branch point, Moab Fault, Utah" (se-2019-137)

Heijn van Gent 10/2/2020

We would like to thank the editor and the reviewers for accepting this paper. In the following we will describe all differences between the version of the manuscript as it was re-submitted in January 2020 and this version, dated February 10th 2020.

We would particularly like to thank the reviewer Fabrizio Balsamo, for taking the time to submit additional notes and proofreading. The document attached below has all track changes marked

- In line 21 we removed the first instance of the word "direction"
- In line 23 we removed the text "in the"
- In line 102 we removed the sentence "In the remainder of this paper we will use this nomenclature."
- In lines 194 – 202 we made the text that was originally bold, normal again
- In line 213-214 we removed the section "of thin deformation band bundle sets" in order to simplify the sentence
- In line 217 we made the text that was originally bold, normal again
- In lines 221-224 we made the text that was originally bold, normal again
- In line 227 we changes the section header to "4.3 Paleostrain results for the study area outside the CHJ"
- In lines 230-231 we made the text that was originally bold, normal again
- In lines 234-235 we made the text that was originally bold, normal again
- In lines 256-257 & 259-260 we made the text that was originally bold, normal again
- In lines 276, 278 and 280-281 we made the text that was originally bold, normal again
- In lines 293-295 we clarified the text to and removed the word "field"
- In line 353 we added the authors initial.

Abutting faults: a case study of the evolution of strain at Courthouse branch point, Moab Fault, Utah

Heijn van Gent^{1,2}, Janos L. Urai¹

¹Institute for Structural Geology, Tectonics and Geomechanics, RWTH Aachen University, Lochnerstrasse 4-20, Aachen, Germany, www.ged.rwth-aachen.de

²Now at: Shell International Exploration and Production, The Hague, the Netherlands

Correspondence to: Heijn van Gent (Heijnvangent@hotmail.com)

Abstract. Slip planes and slip directions of subsequent generations of faults were measured and analysed in the interaction damage zone of two abutting faults in porous sandstones, to understand the paleostress/paleostrain evolution.

The Courthouse branch point of the Moab Fault in SE Utah (USA) is a much-studied, spectacular outcrop of two abutting faults, located in the footwall block of the main fault and in the hanging wall block of the abutting fault. The abutting fault is synthetic to the main fault. The outcrop shows a wide range of deformation structures and fault related diagenesis: striated slip planes, deformation bands, veins, Liesegang bands and copper-rich mineralization.

By combining our own measurements with published data on the relative age of these structures, we classified the data in four sets. Using the Numeric Dynamic Analysis (NDA) to calculate the orientation of the kinematic axes we found three different paleo-extension directions in the four sets, recording the evolution of stress/strain axes during the abutting process.

The first phase of deformation ~~direction~~ is regional extension in the NE-SW direction. As the second fault approached the main fault from its footwall side and the two faults start to become kinematically linked, the extension direction changed so that the overall extension ~~in the~~ became perpendicular to the approaching fault (NW-SE). Finally, the extension direction changed back to perpendicular to the first segment (NE-SW), when the two faults become geometrically-linked and regional extension became dominant again.

1 Introduction

Damage zones can extend tens to hundreds of meters away from the fault core and their evolution in porous sandstones has been the subject of numerous studies (see for example: Aydin and Johnson, 1978; Cartwright et al., 1995; Shipton and Evans, 2002; Shipton and Cowie, 2003; Davatzes and Aydin, 2003; Davatzes et al., 2003, 2005; Crider and Peacock, 2004; Kim et al., 2004; Johansen et al., 2005; Fossen, 2010; Soliva et al., 2016; Peacock et al, 2017a, 2017b).

Although at the regional scale the stress field and kinematics of extensional tectonics is well established (Anderson, 1951), less is known of the interaction of faults at the local scale (Walsh and Watterson, 1991; Peacock, 2002;

Nicol et al., 2010; Duffy et al., 2015; Delogkos et al., 2017; Peacock et al., 2017a), although this is where damage zones and the associated flow of geofluids are most important (Walsh et al., 1998; Lonergan, 2007; Rotevatn et al., 2009a; Yale, 2003; Eichhubl et al., 2009; Duffy, 2015).

Peacock et al. (2017a, b) suggested that flow is already affected in the “interaction damage zone” as the faults approach each other before becoming kinematically linked. The partitioning of strain at this scale can compartmentalize reservoirs or provide conduits for fluid flow depending on the mode of failure (Aydin and Johnson, 1978; Ingram and Urai, 1999; Johansen et al., 2005; Rotevatn et al., 2007; Bozkurt Çiftçi and Bozkurt, 2007; Urai et al., 2008; Eichhubl et al., 2009; Ferrill et al., 2009; Rotevatn et al., 2009b; van Gent et al., 2010a, Vrolijk et al., 2016, Kettermann and Urai, 2015).

In this study we focus on the evolution in the stress and strain field in a single-tip fault interaction (Fossen et al., 2005), where one fault grows towards another. Peacock et al. (2017a) call this an “abutting fault interaction”, where the synchronously growing, abutting fault is synthetic to the main fault, until the two faults become hard-linked and slip together, without cross-cutting.

We use the orientation and slip direction of subsequent generations of minor faults as input for paleostress and paleostrain analysis. We document changes in the extension direction and related local stress field over time, which we correlate with the transition from isolated faults (stage i), through interacting, kinematically linked faults (stage ii), to geometrically linked abutting faults (stage iii). Understanding the stress and strain evolution of such a structure is a key step towards understanding the fluid pathways in the subsurface.

Peacock et al. (2017a) describes the interaction of abutting faults as a continuous process in a regional stress field with three evolutionary stages. First the faults are far from each other and do not interact. The faults start to interact as they approach each other and become kinematically linked. Interaction can be indicated by deformation structures in the acute bisector. In the final stage the approaching fault abuts to the main fault and they become geometrically linked along a branch line. From this point on, both faults slip parallel to this line: the faults become hard-linked.

2.1 Regional Geology

The study area is located on the Colorado Plateau near Moab, Utah (USA), where evaporites of the Paradox formation were deposited on basement in the Carboniferous (Doelling, 2002; Nuccio and Condon, 1996) (Foxford et al., 1996). The Lower Jurassic, aeolian Navajo Sandstone is overlain by the Middle Jurassic Dewey Bridge Member, a calcareous, medium- to fine-grained sandstone. The Slick Rock Member is a part of the Middle Jurassic Entrada Fm. This is a reddish to orange, fine grained and cross-bedded aeolian sandstone, which is overlain by the greyish-yellow sandstones of the Moab Member (Curtis Fm.). Directly overlying the Moab Member is the late Jurassic terrestrial Morrison formation, consisting of siltstones, fine grained sandstones, nodular limestones and conglomerates, with occasional dinosaur bones.

In the Jurassic, major salt-cored anticlines (Fig. 1a) developed in the Moab area (Doelling, 2002; Foxford et al., 1996), with numerous salt-related faults and salt welds in the overburden. The Moab salt-related fault is described in detail in Foxford et al. (1998) and in many other publications. With a maximum throw of ~950 m near the entrance of the Arches National Park and a length of around 45 km (Foxford et al., 1996, 1998), The Moab fault likely initiated as salt-weld, but shows clear characteristics of brittle normal faulting in the study area. The fault offsets rocks from Late Carboniferous to Cretaceous. It was active from the Triassic to mid-Jurassic during salt tectonics, and again from mid-Cretaceous to Early Tertiary when the salt dissolved and the salt structures collapsed (Foxford et al 1996, 1998). Maximum burial depths of 2-3 km and temperatures of around 80 °C were reached in the Entrada sandstone (Nuccio and Condon, 1996; Fossen, 2010).

In aerial and satellite photos the exposed sandstones of the Colorado Plateau display a dense network of sub-vertical joints in many locations which formed due to the uplift of the Colorado Plateau in the Tertiary (Cruikshank and Aydin, 1995; Foxford et al., 1996; Kettermann et al., 2015). Similar structures are visible in the footwall of the Moab Fault in the Moab Member. They postdate the activity of the Moab Fault (Cruikshank and Aydin, 1995; Fossen, 2010).

2.2 Outcrop description

We focus here on an outcrop near the northern termination of the Moab fault (Fig. 1) with a number of hard-linked strands (Fig 1) which likely developed as breached relay ramps (Foxford et al., 1998, Fossen and Rotevatn, 2016). This is opposed to a secondary fault splaying from the main fault. This implies that the growing abutting fault (segment B, Figure 1b and 2) is arrived at the junction after the main Moab fault (segment A). A third segment, (segment C) is exposed further to the west. At the intersection of segment A and B, a spectacular outcrop of abutting faults is found (Courthouse Junction (CHJ) branch point, Fossen et al., 2005) (Fig. 1, Fig. 2 and Fig. 3) (Foxford et al., 1996; Davatzes and Aydin, 2003; Davatzes et al., 2005; Eichhubl et al., 2009; Johansen et al., 2005). The two faults abut at an angle of 64°. The intersecting damage zones are exposed in the footwall of Segment A and the hanging wall of Segment B (see box in Figs. 1b and 2a).

The triangular CHJ outcrop exposes grey-yellow sandstones of the Moab Member (with patches of Morrison Fm on top), while the Courthouse Canyon to the south exposes older rocks, including the Navajo sandstone. The Moab Member typically has a porosity of around 20-25% (Antonellini and Aydin, 1994) which is strongly reduced, to between 17 and 1% at the CHJ (Eichhubl et al., 2009; Johansen et al., 2005). Foxford et al (1998) constrains the throw along segment A to about of 370 m just south of Courthouse Rock (see fig. 2 for location), and between 100 and 20 m in Mill Canyon, just north of Courthouse Rock (Figure 1b). Eichhubl et al. (2009) estimates a throw on Segment A of about 200 m at the CHJ, and on Segment B in the order of 100 m.

Johansen et al (2005) published a detailed map of the outcrop, showing the distribution, location and interaction (cross-cutting relationships) between the different structure types mapped. These include joints and three types of deformation bands: Thick deformation bands (ThickDB) and Thin deformation bands (ThinDB) occasionally with a slip plane (ThinDB-S). ~~In the remainder of this paper we will use this nomenclature.~~ All these types occur in bundles or clusters. While the ThickDB (~1–1.5 mm wide) are dominated by large grain size (~50–150 µm) and

occasional undeformed grains, the ThinDB are truly cataclastic with grain size $<5 \mu\text{m}$. Johansen et al. (2005) use cross-cutting relationships to demonstrate that the ThickDB are older than the ThinDB. In addition, ThinDB were subdivided into seven separate evolutionary sets (fig. 12 in Johansen et al. 2005). Our own observations are consistent with this, and we will rely on the analysis of Johansen et al. (2005) in the remainder of the manuscript.

Occasionally, ThinDB in a bundle display smooth, corrugated surfaces (Fig. 2 b-e), which are interpreted as slip planes (ThinDB-S) by Johansen et al. (2005). These are the slip surfaces that are measured in this study. Because they are corrugated slip surfaces, rather than cataclastic bands, we assume that they follow the Mohr-Coulomb failure criterion. These slip surfaces are relatively small compared to the entire deformation band bundle.

Eichhubl et al., 2009 also report joints in CHJ. Some occur along deformation band bundles, indicating that some of the jointing postdates cataclasis in agreement with regional trend. Davatzes et al. (2005) use a static-elastic calculation of stress at CHJ to explain the formation of these joints, controlled by changes in remote tectonic stress, burial depth, fluid pressure, and rock properties.

3 Methods

3.1 Paleostress and Paleostrain

The reconstruction of either the paleostress or the paleostrain tensor from fault slip data has a long history, but is not yet considered a mature field of structural geology (Simon, 2019). Nevertheless, Paleostress and Paleostrain reconstructions have added significantly to our toolbox to understand brittle deformation in crust (Angelier, 1985; Angelier et al., 1985; Bles et al., 1989; Kleinspehn et al., 1989; Choi et al., 2001; Vandycke, 2002; Dyksterhuis et al., 2005; Martínez-Martínez, 2006; Bozkurt Çiftçi and Bozkurt, 2007; Balsamo et al., 2008; Sippel et al., 2009; van Gent et al., 2009, 2010b). Many of these studies draw inferences on the first order, regional scale stress fields (Gölke and Coblenz, 1996; Gruenthal and Stromeyer, 1994; Warners-Ruckstuhl et al., 2013).

Understanding the evolution of third order local stress perturbations around a group of interacting faults (Peacock, et al. 2017a), is mostly based on numerical models (see e.g.: Ackermann and Schlische, 1997; Thomas and Pollard, 1993; Gupta and Scholz, 2000; Maerten et al., 2002; Davatzes et al., 2005; Nikolinakou et al., 2011). Outcrop scale examples include changing extension directions inside relay ramps (Bozkurt Çiftçi and Bozkurt, 2007), stress analyses based on focal mechanisms (Larroque et al., 1987; Liang and Wyss, 1991; Wyss et al. 1992; Plateaux et al., 2009), paleostress changes around fault tips (Balsamo et al., 2008) and interaction of core complexes with their associated fault systems (Martínez-Martínez, 2006).

Paleostress and paleostrain reconstruction algorithms share many assumptions, although they differ strongly in their approach. Only the orientations and the relative sizes (expressed in the ratio R) of the principal stresses ($R = (\sigma_2 - \sigma_3) / (\sigma_1 - \sigma_3)$) or strains ($R = (\lambda_2 - \lambda_3) / (\lambda_1 - \lambda_3)$) are reconstructed, not the full tensor. This produces (in the case of paleostress using the 'dynamic' fault-slip analysis) a "reduced stress tensor", and for the 'kinematic paleostress analysis' a reduced strain tensor. In the case of coaxial deformation these can be considered to coincide with the stress axes and the reduced stress ratio (Sperner et al., 1993; Sperner, 1996; Ilic and Neubauer, 2005),

but the differences in infinitesimal strain (earthquake analysis) and finite strain (fault slip data) have not yet been fully addressed. For a more complete discussion of these issues see Angelier (1994), Ramsay and Lisle (2000),
140 Celerier et al. (2012) and Simon (2019).

The kinematic approach is based on the Mohr-Coulomb Criterion (Coulomb, 1776; Mohr 1900) and assumes a high shear stress to normal stress ratio. An example is the Numeric Dynamic Analysis (NDA) which calculates the orientation of the kinematic axes and the kinematic reduced ratio. These methods treat all faults as being newly formed. A further requirement is that the contraction and extension axes lie in the plane defined by the slip direction and the fault plane normal. This makes this method unsuitable for the use with faults with oblique striae and reactivated faults (Sperner, 1996). These methods also require the assumption of an angle of internal friction (generally assumed to be 30°), neglecting the natural variability of this parameter (Sperner, 1996; Sperner et al., 1993).
145

The dynamic method assumes that slip on a fault plane will be parallel to the direction of maximum resolved shear stress on the fault plane (Wallace, 1951; Bott, 1959). The Direct Stress Inversion Method (DSI) (Angelier, 1979; 1984; 1990) is an example of a Wallace and Bott type paleostress analysis, where this argument is inverted. Important assumptions of stress inversion are that the stress field is homogeneous, each fault is independent of the others, they are not coeval, and they do not interact (Simon, 2019).
150

Celerier et al., (2012) and Simon (2019) discuss the similarities between paleostress and paleostrain analysis, and the simple geometric relationships that are sometimes observed between strain and stress axes when the fault and slip orientations are clustered. However, in cases when these orientations are more scattered, the two approaches yield different results. Celerier et al. (2012) argue that 'by summing each fault contribution to obtain global strain tensor, strain tensor may be well suited for averaging strain within a volume'. The inverse methods of stress analysis on the other hand may be more suited to 'separate heterogeneous data'.
155

Separating heterogeneous fault orientation – slip direction pairs into homogenous subsets which can reasonably be considered to originate from a single phase, is one of the major challenges in paleostress calculations (see for example Sippel et al., 2009 and references therein), and individual faults that are wrongly assigned, or are overprinted by a later stress state can cause the inversion algorithm to fail. We assume that in CHJ the structures evolved under the same regional stress field, but are interacting with each other, causing overprinting and local stress rotations. For this reason, a paleostrain analysis is in our opinion more suited to analyse this outcrop.
160
165

We used the implementation of NDA in the program Tectonics FP (Ortner et al., 2002, <http://www.tectonicsfp.com/>). For completeness and discussion, the paleostress results of the DSI method are also included in the figures. We indicate cases where paleostress and paleostrain axes are very similar.

3.2 Field observations

We measured the orientation of both the slip planes with polished surfaces as well as the undulations which are interpreted to represent the slip direction (see: Angelier, 1994; Doblas, 1998, Fig. 2b and Fig. 2c) in the different generations of deformation band bundles, following the set numbering and evolutionary sequence of Johanssen et
170

al. (2005). Macroscopic observations on samples cut perpendicular to the slip plane show an increase of deformation band frequency towards the slip plane, in addition to a bleaching of the matrix (Fig. 2d). Observations in thin sections show an anastomosing network of cataclastic deformation bands with a significant reduction of grain size (Fig. 2e), in agreement with Aydin and Johnson, (1978) and Fossen et al. (2007). This demonstrates that there is a genetic relation between bundles and slip planes, and suggests that these slip planes form under the same stress conditions as the bundle. The slickensides do not react with HCl. We note that if the slip planes would have formed late and in a single event, a paleostress/strain analysis on the different sets would yield the same result. More data from detailed optical and Broad Ion Beam polished SEM micrographs of samples of deformation bands from this outcrop can be found in Komoroczi (2014).

In Fig. 3, we augment the different sets mapped by Jonhansen et al. (2005) with our own observations. We have only included deformation band bundles longer than 5 m. GPS stations not associated with a drawn line are of shorter bundles, or isolated slipplanes. The 'forking geometry' (Simón, 2019), formed by segment B and the long deformation band bundle of set 3&4 (see figure 3a) against Segment A, supports the interpretation that Segment B abuts against Segment A. We collected 207 separate fault orientation – slip direction measurements from the larger CHJ area (see Fig. 3). The bulk of these measurements (n=123) are collected at the CHJ outcrop (Fig 3a). The remaining data comes from both inside the fault zone and from the footwall of Segments B and C (Fig. 3b) where very similar-looking slip planes were found, associated with deformation band bundles. The observed slip planes often form conjugate sets. Measurements at the CHJ and those on top of the unnamed tower directly west of the Courthouse Rock are in the Moab Member, while those at the base of the Courthouse Rock (Fig. 3b) are in the Slick Rock and Dewey Bridge members. Those inside the fault zone of Segments B and C are in either Slick Rock or Moab members.

Where Δ ThinDB-S have undulations on meter and smaller scale (See Fig. 4), the different slip directions are generally parallel (Fig. 4d). The observation that slip planes typically occur in the core of a deformation band bundle is illustrated by this example (Fig. 4b and 4c). To better capture the variability of slip direction and reduce the effect of individual outliers due to local spurious orientations or measurement errors, we measured the fault plane and striation orientation up-to three times on a single structure, about a meter apart. The authors strived to include all visible slip planes, but because a reasonable outcrop quality is required to measure both the orientation of the surface and the corrugations, not all of the visible slip planes were included in the final analysis.

Like Johansen et al. (2005), we did not observe slip planes in the set consisting of Δ ThickDB, which are associated with Segment A, but the seven sets associated with Δ ThinDB can all be recognized in our data set of fault orientation – slip direction pairs.

Fault orientation – slip direction pairs measured outside of the Branch Point were grouped into four sets (I-IV) from East to West (see Fig. 3b), based on their geographical spread. Data from location I contains many observations along the base of the Courthouse Rock in the footwall of Segment B, directly south of the branch point (see fig. 1 & 5).

Met opmaak: Lettertype: Niet Vet

Met opmaak: Lettertype: Niet Vet

Met opmaak: Lettertype: Niet Vet

210 No polished slip planes and slickensides are observed on Segments A and B, but observations of the meter-scale undulations of the main fault structures show slip on these structures was dip-slip (at least in the final stages of movement; Fig. 3a).

4 Results

4.1 Separating the data from Courthouse Junction

215 We separated our 123 fault orientation – slip direction pairs from CHJ into the seven evolutionary sets ~~of thin deformation band bundle sets~~, following the subdivision of Johansen et al. (2005), using the average orientations and published locations to differentiate them. Our own observations were classified into their scheme, using the orientation only. Since Set 1 and Set 2, Set 3 and Set 4 are conjugates (the average poles are at an angle of around 60°), we combined these into "Set 1&2", "Set 3&4". The remaining data was grouped into "Set 5, 6 & 7", when we demonstrated this combined set produces kinematically consistent results (see Fig. 6).

Met opmaak: Lettertype: Niet Vet

Met opmaak: Lettertype: Niet Vet

Met opmaak: Lettertype: Niet Vet

4.2 Paleostrain results at the Courthouse Junction

220 The calculated paleostress/paleostain results at CHJ are shown in Figure 6. As discussed above, we focus on strain axes calculated using NDA. Results show extension in the NW-SE direction for Set 1&2 and Set 3&4. For Set 1&2 the extension axis has the direction 334/03 and for Set 3&4 336/10, with R-values of 0.48 and 0.46 respectively. The maximum compressive strain axis is near-vertical for Set 1&2 but is rotated slightly towards the west on the lower hemisphere stereoplot for Set 3&4. The results for Set 5, 6 & 7 show extension in the NE-SW direction, (orientation 219/03) with an R-value of 0.47. We note that the DSI paleostress axes for this particular set are broadly similar to the paleostain axes, although the R values for both methods are very different.

Met opmaak: Lettertype: Niet Vet

Met opmaak: Lettertype: Niet Vet

Met opmaak: Lettertype: Niet Vet

Met opmaak: Lettertype: Niet Vet

Met opmaak: Lettertype: Niet Vet

Met opmaak: Lettertype: Niet Vet

Met opmaak: Lettertype: Niet Vet

4.3 Paleostain results for the remainder of the study area outside the CHJ

230 Figure 7 shows the paleostain/paleostress results outside CHJ. At location I, (Fig. 1, 5) 37 measurements were collected in the footwall of Segment B (Fig. 5). Based on the distribution of slip directions, we separated the data in two sub-sets (set Ia and Ib). Since we did not observe cross-cutting relations at this locality, we cannot determine relative age relationships. By separating the data from location I into set Ia and Ib, the variance reduces for both methods. The histogram of Fig. 7 shows the angular mismatch between the measured orientation of slip on a fault plane, and the calculated slip direction on that plane, providing a quality control. It can be seen that the mismatch is quite small. Both set Ia and Ib as well as the full data set in location I show a vertical maximum compressive strain axis and a N-S extension direction. The paleostress results for set Ia are broadly similar to the paleostain results.

Met opmaak: Lettertype: Niet Vet

Met opmaak: Lettertype: Niet Vet

Met opmaak: Lettertype: Niet Vet

Met opmaak: Lettertype: Niet Vet

Met opmaak: Lettertype: Niet Vet

Met opmaak: Lettertype: Niet Vet

Met opmaak: Lettertype: Niet Vet

240 In location II and location III, the paleostress and paleostain axes are very similar. As these locations are in the footwall of Segment B, away from major fault interactions, it seems reasonable that here the main paleostress requirements of a homogeneous stress field and independency between the faults are met. As a result, NDA and DSI produce results that are similar, with a vertical maximum compressive stress/strain axis and N-S extension direction.

The data at location IV in Fig. 3 is insufficient to calculate a stress or strain tensor (at least four, but preferably 15 independent measurements are required, (Sperner, 1996; Sperner et al., 1993, Simon, 2019). The sample location east of the stream in location IV (red great circle in Fig. 3) has an anomalous orientation compared to the north-dipping fault at the western location (blue great circles), but slip directions are near parallel, suggesting reactivation of an earlier structure. The slip directions do not fit the expected NS extension. This might be due to the perturbation of the stress field by the nearby branch point on Segment C with the minor fault structure, (highlighted with a* in Fig. 1b).

5.1 Interpretation and discussion

Our observations on the relative timing of the different sets of deformation bands is consistent with those of Johansen et al. (2005) based on cross-cutting relationships. Johansen et al. (2005) conclude that their set 1 and set 2 and their set 3 and set 4 have developed roughly simultaneously, based on similar orientations, during the approach and initial interaction of Segments A and B. Johansen et al. (2015) describe their set 5, set 6 and set 7 to have formed directly after Segment B abutted against Segment A.

Our study shows that set 1&2 and set 3&4 formed under similar extension directions, supporting their interpretation, and suggesting a more complex history with gradually rotating deformation axes. Set 5,6&7 are kinematically consistent (but not conjugate), thus we interpret them to have formed roughly at the same time. In this set, the paleostress axes are consistent with the paleostrain axes, while this is not the case for combined set 1&2 and set 3&4. Similar to the situation described above for locations II and III, Set 5,6&7 is interpreted to be the only set in CHJ where the requirements of a homogeneous stress field and independency between the faults are met. Thus, both methods produce similar results here. The same can be observed for the paleostress results of Location Ia.

5.2 Deformation during the transition from kinematically to geometrically linked abutting faults

In this study we used both kinematic and dynamic analysis of fault slip data. Using the analysis of Johansen et al. (2005) to separate data from different generations, the strain-based NDA method which averages strain in a volume, can analyse this evolution. The NDA method yields consistent results over the study area, which is a reasonable result for this system (Celerier et al. 2012). In those locations where we can reasonably assume a homogenous stress field and no fault interaction, we found similar stress and strain axes. In the other locations where the relation between calculated stress and strain axes diverges, we infer that this is because DSI cannot separate the effects of the gradually rotating stress field as Segment B approaches Segment A.

Figure 8 summarizes the evolution of the stress state in three stages, assuming coaxial deformation: (i) as Segment A and B are isolated, (ii) kinematically linked and (iii) geometrically linked.

For stage (i), our observations are consistent with the interpretation of Johansen et al. (2005) that Segment A formed first. Since no striated slip planes are observed here, we assume a vertical σ_1 and estimate σ_3 at 040-045°, perpendicular to Segment A. This is interpreted as the regional stress field. ThickDB also formed during this phase (Johansen et al., 2005).

Met opmaak: Lettertype: Niet Vet

Met opmaak: Lettertype: Niet Vet

Met opmaak: Lettertype: Niet Vet

Met opmaak: Lettertype: Niet Vet

Met opmaak: Lettertype: Niet Vet

Met opmaak: Lettertype: Niet Vet

In stage (ii) (Fig. 8b), the two faults start to interact. Set 1&2 start to form in the damage zone around the fault tip of Segment B and develop further in the interaction damage zone, in a heterogeneous, rotating stress field. This stress field eventually causes a second group of deformation structures (set 3&4) to form. The difference in orientation of the extension axis between the results of set 1&2 and set 3&4 is small, but the maximum principle strain (λ_1 in Fig. 6) rotates slightly away from vertical.

Met opmaak: Lettertype: Niet Vet

Met opmaak: Lettertype: Niet Vet

Met opmaak: Lettertype: Niet Vet

Met opmaak: Lettertype: Niet Vet

In stage (iii) the segments A and B connected and became geometrically hard-linked. The stress state in the Courthouse branch point rotates back to regional extension direction of NE-SW tension as seen in the NDA analysis of sets 5,6&7 (Fig. 8c).

285 The relative timing of the observations outside CHJ is poorly constrained, but extension at locations I, II and III was roughly N-S (Fig. 8b). If we assume that Set Ia formed before Ib, the rotation caused by the linkage of Segment A and B corresponds to the minor rotation of axes at this location. In locations II and III we infer that the stress states were not influenced by the connection of Segment A and B, and deformation axes are assumed to be relatively constant here. At location IV our data suggest that extension was with a slight anticlockwise rotation.

The changes in orientation of the principal stresses over time in CHJ are interpreted to show the local, third order stress evolution. The northern termination of the Moab fault (segment A, B and C, but before the relay ramps between them were breached) initially field-formed in a regional stress field, an overall NE-SW regional extension. The approach of Segment B as the relay ramp was breaching caused local stress rotations around the fault tip, causing new structures to form. Thomas and Pollard (1993) show that near-tip stresses in models of en-echelon mode I fractures in a similar geometry dominate over the regional stresses, and these stresses change before oblique intersection. Davatzes et al. (2005) model the stress state at a branch point by combining observations from the Courthouse branch point and the branch point close to location IV (Fig. 3). Their models are iterative and the calculated stress orientations are similar to our results.

300 Peacock et al. (2017a) discuss how the interaction damage zone can influence fluid flow before the faults become geometrically linked. Eichubl et al. (2009), infer most diagenetic cement deposits in the CHJ to be associated with Set 5,6&7 which formed after the faults became hard-linked. They identify the structures associated with this set as joints and not as deformation bands. Johansen et al. (2005) however shows that joints in the CHJ formed inside a deformation band (an observation shared by us), and thus jointing post-dates the formation of deformation bands. This suggest that the diagenetic overprint in the CHJ is later than the abutting of the fault.

6. Conclusions

We analysed subsequent generations of striated minor fault planes in the overprinting damage zones of interacting normal faults in porous sandstone, at Courthouse Junction, near Moab, UT.

310 By combining our own measurements with published data on the relative age of these structures, we classified the observations in four sets. Using Numeric Dynamic Analysis (NDA) the orientation of the kinematic axes was

calculated for three of these sets, and made inferences on the first set. We found three different paleo-extension directions in the sets, recording the evolution of stress/strain axes during the abutting process.

315 Stage 1 of deformation direction is regional extension in the NE-SW direction. In this case study of a single-tip interaction of abutting faults, we find a near 90° rotation of the extension direction (from NE-SW to NW-SE) as the stress fields around the main fault and the abutting faults start to interact when they are kinematically linked in stage ii. Once the faults abut and become geometrically linked (stage iii), there is a rotation back to the regional extension direction. This evolution represents a third order local change of the regional stress field, caused by relay ramp breaching and abutting faults.

Data availability

320 Data of this study are available on reasonable request from the author.

Author contributions

HvG performed the field investigation, data analysis and conceptualized and wrote the first draft. JLU provided supervision, in-depth discussions and validation throughout, including extensive revisions of the original draft. This work was funded by Wintershall GmbH through the "Tight Gas Initiative" of Wintershall and RWTH Aachen
325 University.

Acknowledgements

We further thank Bert de Wijn and Andreas Frischbutter (Wintershall) as well as Janneke IJmker, Steffen Abe, Frank Strozyk, Myron Thomas and Zoltan Komoroczi for discussions and critical comments to the manuscript. The
330 authors thank Fabrizio Balsamo and an anonymous reviewer for constructive criticisms which much improved the paper, as well as the topical editor, Federico Rossetti, for overseeing the review. process

References

- Ackermann, R. V. and Schlische, R. W.: Anticustering of small normal faults around larger faults. *Geology*, 25(12), 1127-1130, doi: 10.1130/0091-7613, 1997.
- 335 Anderson, E. M.: The dynamics of faulting and dyke formation with applications to Britain, First edition ed., 206 pp., Oliver&Boyd, Edinburgh., 1951.
- Angelier, J.: Determination of the mean principal directions of stresses for a given fault population. *Tectonophysics*, 56(3-4), T17, doi: 10.1016/0040-1951(79)90081-7 , 1979

- 340 Angelier, J.: Tectonic analysis of fault slip data sets. *Journal of Geophysical Research*, 89, 5838-5848, doi: 10.1029/JB089iB07p05835, 1984.
- Angelier, J.: Extension and rifting – the Zeit region, Gulf of Suez. *Journal of Structural Geology*, 7(5), 605-612, doi: 10.1016/0191-8141(85)90032-X, 1985.
- Angelier, J.: Inversion of field data in fault tectonics to obtain the regional stress-III. A new rapid direct inversion method by analytical means. *Geophysics Journal International*, 103, 363-376, doi: 10.1111/j.1365-246X.1990.tb01777.x, 1990.
- 345 Angelier, J.: Fault Slip Analysis and Paleostress Reconstruction. In: *Continental Deformation*, edited by P. L. Hancock, pp. 53-100, Pergamon Press, Oxford, 1994.
- Angelier, J., Colletta, B. and Anderson, R. E.: Neogene paleostress changes in the Basin and Range: A case study at Hoover Dam, Nevada-Arizona. *Geological Society of America Bulletin*, 96(3), 347-361, doi: 10.1130/0016-7606, 350 1985.
- Aydin, A. and Johnson, A.M.: Development of faults as zones of deformation bands and as slip surfaces in sandstones. *Pure and Applied Geophysics*, 116, 931-942, doi: 10.1007/BF00876547, 1978
- Balsamo, F., Storti, F., Piovano, B., Salvini, F., Cifelli, F. and Lima, C.: Time dependent structural architecture of subsidiary fracturing and stress pattern in the tip region of an extensional growth fault system, Tarquinia basin, Italy. *Tectonophysics* 454 54–69, doi: 10.1016/j.tecto.2008.04.011, 2008
- 355 Bles, J. L., Bonijoly, D., Castaing, C. and Gros, Y.: Successive post-Variscan stress fields in the French Massif Central and its borders (Westerns European plate): comparison with geodynamic data. *Tectonophysics*, 79-111, doi: 10.1016/0040-1951(89)90185-6, 1989.
- Bott, M. H. P.: The mechanics of oblique slip faulting. *Geological Magazine*, 96(2), 109-117, doi: 10.1017/S0016756800059987, 1959:
- 360 Bozkurt Çiftçi, N. and Bozkurt, E.: Anomalous stress field and active breaching at relay ramps: a field example from Gediz Graben, SW Turkey. *Geological Magazine*, 144(4), 687-699, doi: 10.1017/S0016756807003500, 2007.
- Cartwright, J. A., Trudgill, B. D. and Moore, J. M.: Fault growth by segment linkage: an explanation for scatter in maximum displacement and trace length data from the Canyonlands Grabens of SE Utah. *Journal of Structural Geology*, 9, 1319-1326, doi: 10.1016/0191-8141(95)00033-A, 1995.
- 365 Celerier, B., Etchecopar, A., Bergerat, F., Vergely, P. and Arthaud, F.: Inferring stress from faulting : from Early concepts to inverse methods. *Tectonophysics*, Elsevier, 581, pp.206-219 (IF 2,433). Doi: 10.1016/j.tecto.2012.02.009, 2012.

- Choi, P.-y., Kwon, S.-k., Hwang, J.-h., Lee, S. R. and An, G.-o.: Paleostress analysis of the Pohang-Ulsan area, Southeast Korea: tectonic sequence and timing of block rotation. *Geosciences Journal*, 5(1), 1-18, doi: 10.1007/BF02910169, 2001.
- Coulomb, C. A.: Sur une application des règles maximis et minimis à quelques problèmes de statique à l'architecture, *Acad. Sci. Paris Mém. Math. Phys.*, 343-382, 1776.
- Crider, J. G. and Peacock, D. C. P.: Initiation of brittle faults in the upper crust: a review of field observations. *Journal of Structural Geology*, 26(4), 691-707, doi: 10.1016/j.jsg.2003.07.007, 2004.
- Cruikshank, K. M. and Aydin, A.: Unweaving the joints in Entrada Sandstone, Arches National Park, Utah, U.S.A. *Journal of Structural Geology*, 17(3), 409-421, doi: 10.1016/0191-8141(94)00061-4, 1995
- Davatzes, N. C. and Aydin, A.: Overprinting faulting mechanisms in high porosity sandstones of SE Utah. *Journal of Structural Geology*, 25(11), 1795-1813, doi: 10.1016/S0191-8141(03)00043-9, 2003
- Davatzes, N. C., Aydin, A. and Eichhubl, P.: Overprinting faulting mechanisms during the development of multiple fault sets in sandstone, Chimney Rock fault array, Utah, USA. *Tectonophysics*, 363(1-2), 1-18, doi: 10.1016/S0040-1951(02)00647-9, 2003
- Davatzes, N. C., Eichhubl, P. and Aydin, A.: Structural evolution of fault zones in sandstone by multiple deformation mechanisms: Moab fault, southeast Utah. *Geological Society of America Bulletin*, 117(1-2), 135-148, doi: 10.1130/B25473.1, 2005.
- Delogkos, E., Childs, C., Manzocchi, T. and Walsh, J.J.: The role of bed-parallel slip in the development of complex normal fault zones. *Journal of Structural Geology* 97, 199-211, doi: 10.1016/j.jsg.2017.02.014, 2017.
- Doblas, M.: Slickenside kinematic indicators. *Tectonophysics*, 295(1-2), 187, doi: 10.1016/S0040-1951(98)00120-6, 1998.
- Doelling, H. H.: Geologic map of the Moab and eastern part of the San Rafael Desert 30' X 60' Quadrangles, Grand and Emery counties, Utah, and Mesa county, Colorado, Map 180, Utah Geological Survey, 2002.
- Duffy, O., Bell, R. E., Jackson, C. A.-L., Gawthorpe, R.L. and Whipp, P.S.: Fault growth and interactions in a multiphase rift fault network: Horda Platform, Norwegian North Sea. *Journal of Structural Geology* 80 (2015) 99-119, doi: 10.1016/j.jsg.2015.08.015, 2015.
- Dyksterhuis, S., Müller, R. D. and Albert, R. A.: Paleostress field evolution of the Australian continent since the Eocene. *Journal of Geophysical Research, Solid Earth*, 110, B05102, doi: 10.1029/2003JB002728, 2005.
- Eichhubl, P., Davatz, N. C. and Becker, S. P: Structural and diagenetic control of fluid migration and cementation along the Moab fault, Utah. *AAPG Bulletin*, 93(5), 653-681, doi: 10.1306/02180908080, 2009.

- Ferrill, D. A., Morris, A. P. and McGinnes, R. N.: Crossing conjugate normal faults in field exposures and seismic data. *AAPG Bulletin*, 93(11), 1471-1488, doi: doi.org/10.1306/06250909039, 2009
- 400
- Fossen, H.: Deformation bands formed during soft-sediment deformation: Observations from SE Utah. *Marine and Petroleum Geology*, 27(1), 215-222, doi: 10.1016/j.marpetgeo.2009.06.005, 2010.
- Fossen, H. and Rotevatn, A.: Fault linkage and relay structures in extensional settings—A review. *Earth-Science Reviews* 154 14–28, doi: 10.1016/j.earscirev.2015.11.014, 2016.
- 405
- Fossen, H., Johansen, T. E. S., Hesthammer, J. and Rotevatn A.: Fault interaction in porous sandstone and implications for reservoir management; examples from southern Utah. *AAPG Bulletin*, 89(12), 1593-1606, doi: 10.1306/07290505041, 2005.
- Fossen, H., Schultz R. A., Shipton, Z. K. and Mair, K.: Deformation bands in sandstone: a review. *Journal of the Geological Society, London*, 164, 755-769, doi: 10.1144/0016-76492006-036, 2007.
- 410
- Foxford, K. A., Garden, I. R., Guscott, S. C., Burley, S. D., Lewis, J. L. L., Walsh, J. J. and Watterson J.: The field geology of the Moab Fault. In: *Geology and Resources of the Paradox Basin*, edited by A. C. Huffmann, W. R. L. Lund and L. H. Godwin, pp. 265-283, Utah Geological Association Guidebook, 1996.
- Foxford, K. A., Walsh, J. J. and Watterson, J.: Structure and content of the Moab Fault Zone, Utah, USA, and its implications for fault seal prediction. In: Jones, G., Fisher, Q. J. & Knipe, R. J. (eds) *Faulting, Fault Sealing and Fluid Flow in Hydrocarbon Reservoirs*. Geological Society, London, Special Publications, 147, 87-103, doi: 10.1144/GSL.SP.1998.147.01.06 1998.
- 415
- Gölke, M. and Coblenz, D.: Origins of the European regional stress field. *Tectonophysics*, 266, 11-24, doi: 10.1016/S0040-1951(96)00180-1, 1996.
- Gruenthal, G. and Stromeier, D.: The recent crustal stress field in Central Europe sensu lato and its quantitative modelling. *Geologie en Mijnbouw*, 73, 173-180, 1994.
- 420
- Gupta, A. and Scholz, C. H.: A model of normal fault interaction based on observations and theory. *Journal of Structural Geology*, 22(7), 865-879, doi: 10.1016/S0191-8141(00)00011-0, 2000.
- Gutiérrez, F.: Origin of the salt valleys in the Canyonlands section of the Colorado Plateau: Evaporite-dissolution collapse versus tectonic subsidence. *Geomorphology*, 57(3-4), 423-435, doi: 10.1016/S0169-555X(03)00186-7,
- 425 2004
- Ilic, A. and Neubauer, F.: Tertiary to recent oblique convergence and wrenching of the Central Dinarides: Constraints from a palaeostress study. *Tectonophysics*, 410 465-484, doi: 10.1016/j.tecto.2005.02.019, 2005.
- Ingram, G.M., Urai, J.L., 1999. Top-seal leakage through faults and fractures; the role of mudrock properties. *Geological Society Special Publications* 158, 125–135.

- 430 Johansen, T. E. S., Fossen, H. and Kluge, R.: The impact of syn-faulting porosity reduction on damage zone architecture in porous sandstone: an outcrop example from the Moab Fault, Utah. *Journal of Structural Geology*, 27(8), 1469-1485, doi: 10.1016/j.jsg.2005.01.014, 2005.
- Kettermann, M., Grützner, C., van Gent, H.W., Urai, J.L., Reicherter, K. and Mertens, J.: Evolution of a highly dilatant fault zone in the grabens of Canyonlands National Park, Utah, USA -Integrating fieldwork, ground-
435 penetrating radar and airborne imagery analysis. *Solid Earth*, 6 (3), pp. 839-855, 10.5194/se-6-839-2015, 2015.
- Kettermann, M. and Urai, J.L.: Changes in structural style of normal faults due to failure mode transition: First results from excavated scale models. *Journal of Structural Geology* 74, 105–116. doi: 10.1016/j.jsg.2015.02.013, 2015.
- Kim, Y.-S., Peacock, D. C. P. and Sanderson, D. J.: Fault damage zones. *Journal of Structural Geology*, 26(3), 503-
440 517, doi:doi:10.1016/j.jsg.2003.08.002 , 2004.
- Kleinspehn, K. L., Pershing, J. and Teyssier, C.: Paleostress stratigraphy: A new technique for analyzing tectonic control on sedimentary-basin subsidence. *Geology*, 17, 253-256, doi: 10.1130/0091-7613, 1989.
- Komoróczy, Z.: Fractures and faults in tight gas sandstones: a study using laboratory and field data. Doctoral thesis, Faculty of Georesources and Materials Engineering, RWTH Aachen University. Available online at
445 <http://publications.rwth-aachen.de/record/482027/files/482027.pdf>, 2014
- Lonergan, R. J. H. J. L., Rawnsley, K. and Sanderson, D. J. (Ed.): *Fractal Reservoirs*, 285 pp., The Geological Society London, London, 2007.
- Larroque, J. M., Etchecopar, A., and Philip, H.: Evidence for the permutation of stresses (σ_1 and σ_2) in the Alpine foreland: the example of the Rhine graben. *Tectonophysics*, 144(4), 315-322, doi: 10.1016/0040-1951,
450 1987.
- Liang, B. and Wyss, M.: Estimates of orientations of stress and strain tensors based on fault-plane solutions in the epicentral area of the great Hawaiian earthquake of 1868. *Bulletin of the Seismological Society of America* ; 81 (6): 2320–2334, 1991.
- Maerten, L., Gillespie, P., and Pollard, D. D.: Effects of local stress perturbation on secondary fault development.
455 *Journal of Structural Geology*, 24, 145-153, doi: 10.1016/S0191-8141(01)00054-2, 2002.
- Martínez-Martínez, J. M.: Lateral interaction between metamorphic core complexes and less-extended, tilt-block domains: the Alpujarras strike-slip transfer fault zone (Betics, SE Spain). *Journal of Structural Geology*, 28(4), 602-620, doi:10.1016/j.jsg.2006.01.012 , 2006
- Mohr, O.: Welche Umstände bedingen die Elastizitätsgrenze und den Bruch eines Materials? *Zeitschrift des Vereins*
460 *Deutscher Ingenieure*, 44, 1524-1530, 1572-1577, 1900.

Nicol, A., Walsh, J. J., Villamor, P., Seebeck, H. and Berryman, K. R.: Normal fault interactions, paleoearthquakes and growth in an active rift. *Journal of Structural Geology*, 32(8), 1101-1113, doi: 10.1016/j.jsg.2010.06.018, 2010.

465 Nikolinakou, M.A., Luo, G., Hudec, M.R. and Flemings, P.B.: Geomechanical modeling of stresses and pore pressures in mudstones adjacent to salt bodies. Presented at the 45th US Rock Mechanics/Geomechanics Symposium, 26–29 June 2011, American Rock Mechanics Association, San Francisco, California, USA, 1–8, doi: , 2011.

470 Nuccio, V. F. and Condon, S. M.: Burial and Thermal History of the Paradox Basin, Utah and Colorado, and Petroleum Potential of the Middle Pennsylvanian Paradox Formation. Report, 47 pp, US Geological Survey, Reston, VA, USA, 1996

Ortner, H., Reiter, F. and Acs, P.: Easy handling of tectonic data: the programs TectonicVB for Mac and Tectonics FP for Windows(tm). *Computers & Geosciences*, 28, 1193-1200, see also <http://www.tectonicsfp.com/>, doi: 10.1016/S0098-3004(02)00038-9, 2002.

475 Peacock, C.P.: Propagation, interaction and linkage in normal fault systems. *Earth-Science Reviews*, Volume 58, Issues 1–2, Pages 121-142, doi: 10.1016/S0012-8252(01)00085-X, 2002

Peacock, D., Nixon, C., Sanderson, D., Rotevatn, A. and Zuluaga, L.: Interacting faults. *Journal of Structural Geology*. 97 , doi: 10.1016/j.jsg.2017.02.008, 2017a

Peacock, C.P. Dimmen, V., Rotevatn, A. and Sanderson, D.J.: A broader classification of damage zones. *Journal of Structural Geology*, Volume 102, Pages 179-192, doi: 10.1016/j.jsg.2017.08.004, 2017b.

480 Plateaux, R., Angelier, J., Bergerat, F., Cappa, F. and Stefánsson, R.: Stress changes induced at neighbouring faults by the June 2000 earthquakes, South Iceland Seismic Zone. *Terra Nova*, Volume 22, Issue 2, doi: 10.1111/j.1365-3121.2009.00919.x, 2009

Ramsay, J. G. and Lisle, R. J.: *The Techniques of modern structural geology Volume 3: Applications of continuum mechanics in structural geology*, 700-1061 pp. Academic Press, London, 2000.

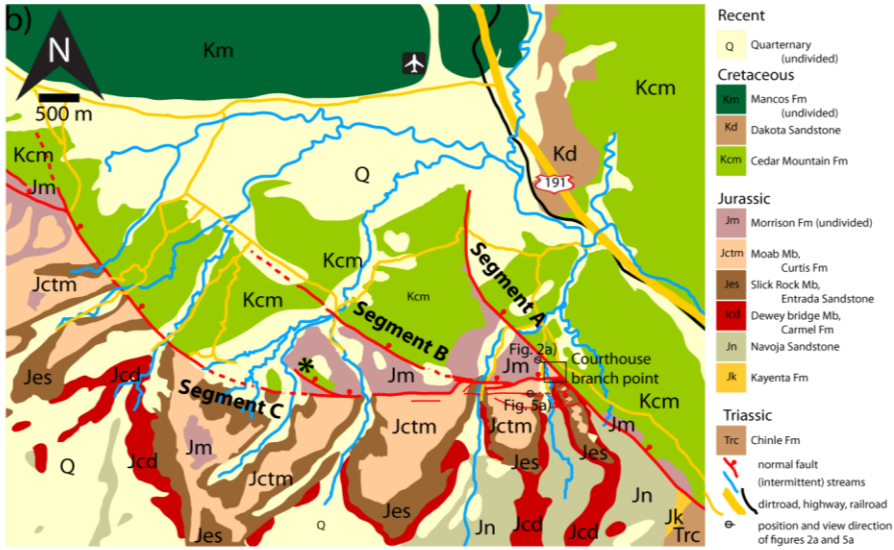
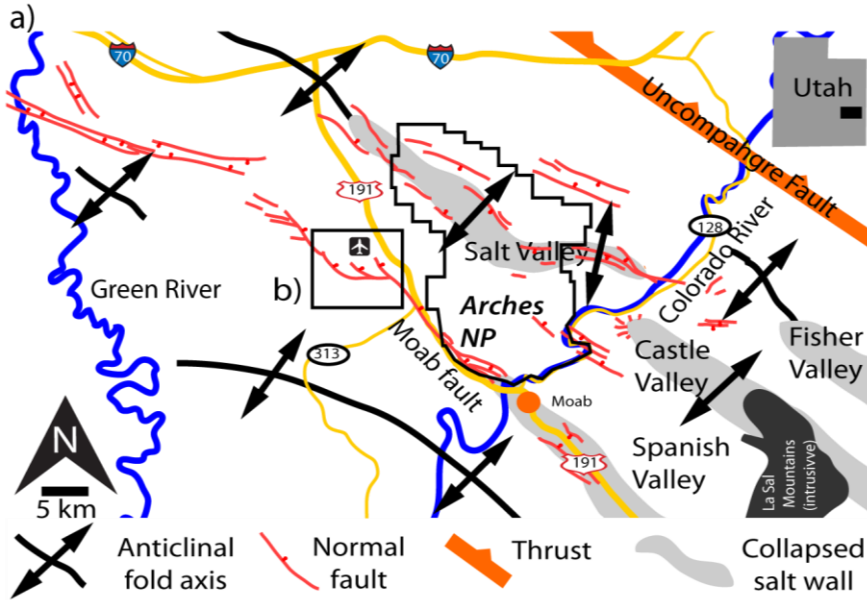
485 Rotevatn, A., Tveranger, J., Howell, J. A. and Fossen, H.: Dynamic investigation of the effect of a relay ramp on simulated fluid flow: geocellular modelling of the Delicate Arch Ramp, Utah. *Petroleum Geoscience*, 15, 45-58, doi: 10.1144/1354-079309-779, 2009a.

490 Rotevatn, A., Buckley, S. J., Howell, J. A. and Fossen, H.: Overlapping faults and their effect on fluid flow in different reservoir types: A LIDAR-based outcrop modeling and flow simulation study. *AAPG Bulletin*, 93(3), 407-427, doi: 10.1306/09300807092, 2009b.

- Rotevatn, A., Fossen, H., Hesthammer, J., Aas, T.E. and Howell: Are relay ramps conduits for fluid flow? Structural analysis of a relay ramp in Arches National Park, Utah, in *Fractured Reservoirs*, edited by L. Lonergan, R. Jolly, K. Rawnsley and D. J. Sanderson, pp. 55-71, London, doi: 10.1144/GSL.SP.2007.270.01.04, 2007.
- 495 Shipton, Z. K. and Evans, J. P.: Structural Heterogeneity and Permeability in Faulted Eolian Sandstone: Implications for Subsurface Modeling of Faults. *AAPG Bulletin*, 86(5), 869-883, doi: 10.1306/61EEDBC0-173E-11D7-8645000102C1865D, 2002.
- Shipton, Z. K. and Cowie, P. A.: A conceptual model for the origin of fault damage zone structures in high-porosity sandstone. *Journal of Structural Geology*, 25(3), 333-344, doi: 10.1016/S0191-8141(02)00037-8, 2003.
- Simón, J.L.: Forty years of paleostress analysis: has it attained maturity? *Journal of Structural Geology*, Volume 500 125, Pages 124-133, doi: 10.1016/j.jsg.2018.02.01, 2019.
- Sippel, J., Scheck-Wenderoth, M., Reicherter, K. and Mazur, S.: Paleostress states at the south-western margin of the Central European Basin System - Application of fault-slip analysis to unravel a polyphase deformation pattern. *Tectonophysics - Progress in understanding sedimentary basins*, 470(1-2), 129-146, doi: 10.1016/j.tecto.2008.04.010, 2009.
- 505 Sperner, B.: Computer programs for the kinematic analysis of brittle deformation structures. in *Tübinger Geowissenschaftliche Arbeiten*, edited by W. Frisch, Tübingen, 1996
- Sperner, B., Ratschbacher, L. and Ott, R.: Fault-striae analysis: a Turbo pascal program for graphical presentation and reduced stress tensor calculation. *Computers & Geosciences*, 19(9), 1361-1388, doi: 10.1016/0098-3004(93)90035-4, 1993.
- 510 Soliva, R., Ballas, G., Fossen, H. and Philit, S.: Tectonic regime controls clustering of deformation bands in porous sandstone. *GEOLOGY*, June 2016; v. 44; no. 6; p. 423-426, doi: 10.1130/G37585.1, 2016
- Thomas, A. L. and Pollard, D.D.: The geometry of echelon fractures in rock: implications from laboratory and numerical experiments, *Journal of Structural Geology*, 15(3-5), 323-334, doi: 10.1016/0191-8141(93)90129-X, 1993.
- 515 Urai, J.L., Nover, G., Zwach, C., Ondrak, R., Schöner, R., and Kroos, B.: Transport Processes. In: *Dynamics of Complex Intracontinental Basins: The Central European Basin System*. Springer, 367-388, 2008
- van Gent, H. W., Back, S. , Urai, J. L., Kukla, P. A. and Reicherter, K.: Paleostresses of the Groningen area, the Netherlands – results of a seismic based structural reconstruction. *Tectonophysics - Progress in understanding sedimentary basins* 470(1-2), 147-161, doi: 10.1016/j.tecto.2008.09.038, 2008.
- 520 van Gent, H.W., Holland, M., Urai, J.L., and Loosveld, R.: Evolution of fault zones in carbonates with mechanical stratigraphy - insights from scale models using layered cohesive powder. *Journal of Structural Geology* 32, 1375-1391, doi: 10.1016/j.jsg.2009.05.006, 2010a

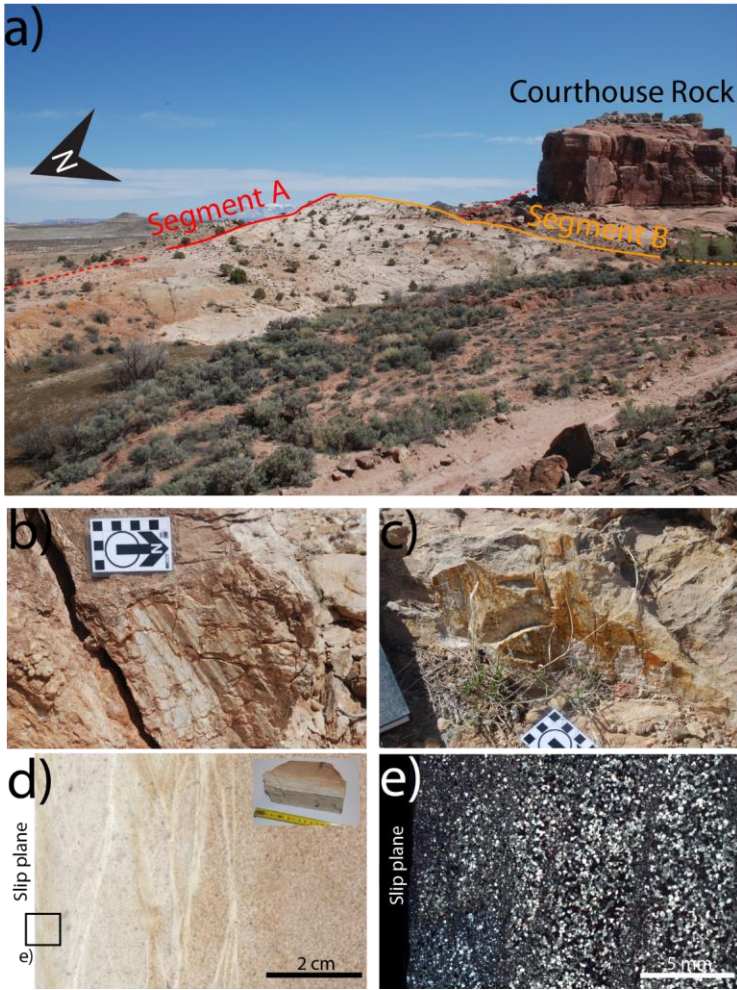
- van Gent, H. W., Back, S., Urai J.L., and Kukla, P. A.: Small-scale faulting in the Upper Cretaceous of the Groningen Block (The Netherlands): 3D seismic interpretation, fault plane analysis and paleostress. *Journal of Structural Geology*, 32(4), 537-553, doi: 10.1016/j.jsg.2010.03.003, 2010b
525
- Vandycke, S.: Paleostress records in Cretaceous formations in NW Europe: extensional and strike-slip events in relationships with Cretaceous-Tertiary inversion tectonics. *Tectonophysics*, 357, 119-136, doi: 10.1016/S0040-1951(02)00365-7, 2002
- Vrolijk, P., Urai, J.L. and Kettermann, M.: Clay Smear: Review of Mechanisms and Applications. *Journal of Structural Geology* 86, 95–152. Doi: 10.1016/j.jsg.2015.09.006, 2016.
530
- Wallace, R. E.: Geometry of shearing stress and relation to faulting. *Journal of Geology*, 59, 111-130.
- Walsh, J. J. and Watterson, J.: Geometric and kinematic coherence and scale effects in normal fault systems. In: *The Geometry of Normal Faults*, edited by A. M. Roberts, G. Yielding and B. Freeman, pp. 193-203, London, 1991.
- Walsh, J. J., Watterson, J., Heath, A. E. and Childs, C.: Representation and scaling of faults in fluid flow models. *Petroleum Geoscience*, 4(3), 241-251, doi: 10.1144/petgeo.4.3.241, 1998
535
- Warners-Ruckstuhl, K, Govers, R. and Wortel, R.: Tethyan collision forces and the stress field of the Eurasian Plate. *Geophysical Journal International*, Volume 195, Issue 1, Pages 1–15, doi: 10.1093/gji/ggt219, 2013.
- Wyss, M., Liang, B., R. Tanigawa, W. and Wu, X.: Comparison of orientations of stress and strain tensors based on fault plane solutions in Kaoiki, Hawaii. *Journal of Geophysical Research*, 97, 4769-4790. doi: 10.1029/91JB02968, 1992.
540
- Yale, D. P. : Fault and stress magnitude controls on variations in the orientation of in situ stress, Geological Society, London, Special Publications, 209(1), 55-64, doi: 10.1144/GSL.SP.2003.209.01.06, 2003.

Figures and Figure captions



550

Fig. 1: a) Simplified geological map of the Moab area, showing the study area in the box. b) Geological map of the study area. The box denotes the position of the CHJ, and the locations and view direction for Fig. 2a and Fig. 5. Maps are modified from: Nuccio and Condon, 1996, Doelling, 2002, Gutiérrez, 2004, Fossen et al., 2005, Johansen et al., 2005, Eichhubl et al., 2009, with our own observations. Coordinates of top left and bottom right corners of the maps (UTM): a) 38.963783, -110.183635; 38.468487, -109.139748, b) 38.754977, -109.810685; 38.691298, -109.710322.



555

Fig. 2: Outcrop and sample photos. a) The CHJ, as seen from the NW. Larger deformation structures are already visible from this distance. See Fig. 1b for location and view direction of this photo. b) and c) show typical examples of striated slip planes. d) photograph of a sample cut perpendicular to the slip plane and parallel to the striations. Note the increase in deformation band density towards the slip plane, as well as the bleaching of the sandstone near the slip plane. A picture of the sample is shown in the inset. e) Photomicrograph with crossed polarizers, thin section of the sample shown in e). The deformation bands are clearly cataclastic. Deformation band density increases towards the slip plane at this scale too.

560

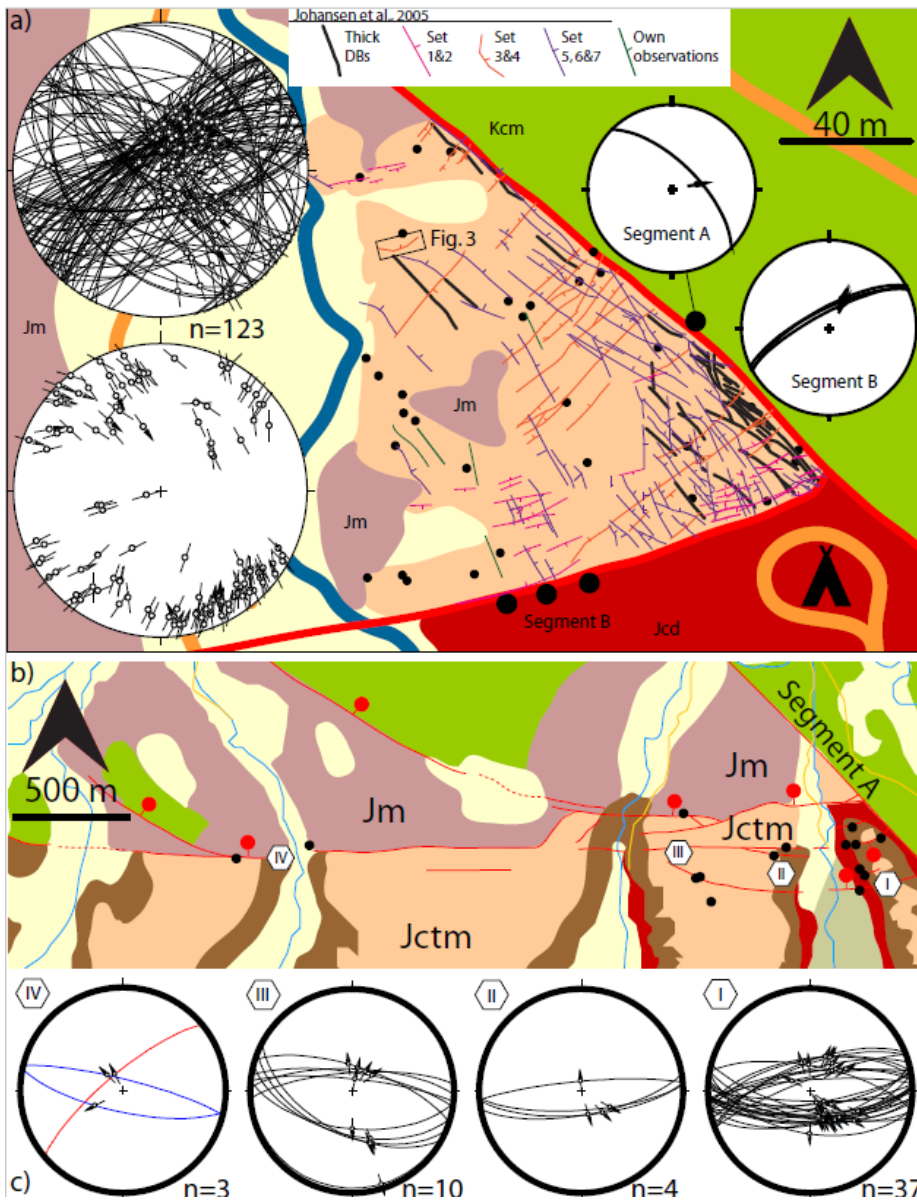


Fig. 3: a) Map of the Courthouse Junction outcrop with GPS stations (dots) of the locations where striated slip planes were measured in (33 locations, 123 measurements). A sketch map of the different sets of deformation bands is included, based on Johansen et al. (2005) and our own observations (length > 5m). Stereograms show the measured striated fault planes, as Angelier lower hemisphere plot and as Hoepener plot. The small stereograms show faults and striations in the two fault segments. See Fig. 1 for key. b) same as a, but along Segment B and C, at 15 stations, with 60 measurements (separated in 4 Locations; I-IV). c) Stereonets for these Locations.

565

570

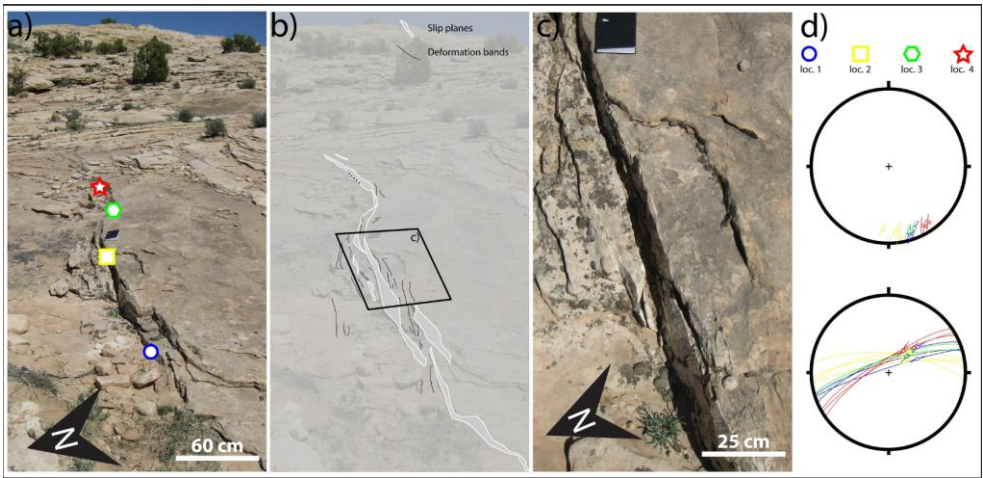


Fig. 4: A) An undulating slip plane in a bundle of deformation bands. Symbols show measurement locations. For location, see Fig. 3. B) interpreted field image of A). C) detail of A), showing the slip plane in the core of a bundle of deformation bands. D) Stereographic plot of the orientation and slip direction at the four locations, shown in A). Both the Hoepener plot (top) and the great circle plot (bottom) show that these locations exhibit significantly different orientations of the structure, but that the slip directions are similar. The colours and symbols in d) correspond to those in a).

575

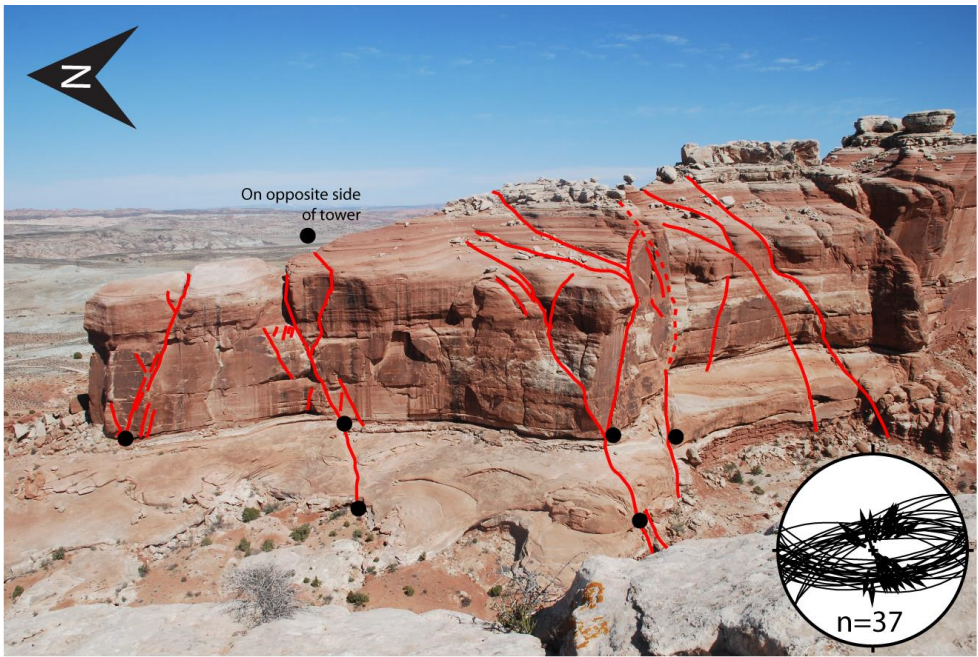


Fig. 5: View of the western face of the northern termination of the Courthouse Rock (Location I), with visible faults interpreted. The 27 measurements of striated slip planes are recorded at the stations indicated with the black dots. Width of view is about 400 m. Stereonet shows the measured planes and slip directions. See Fig. 1b for location and direction info. CHJ is just off the image, to the north.

580

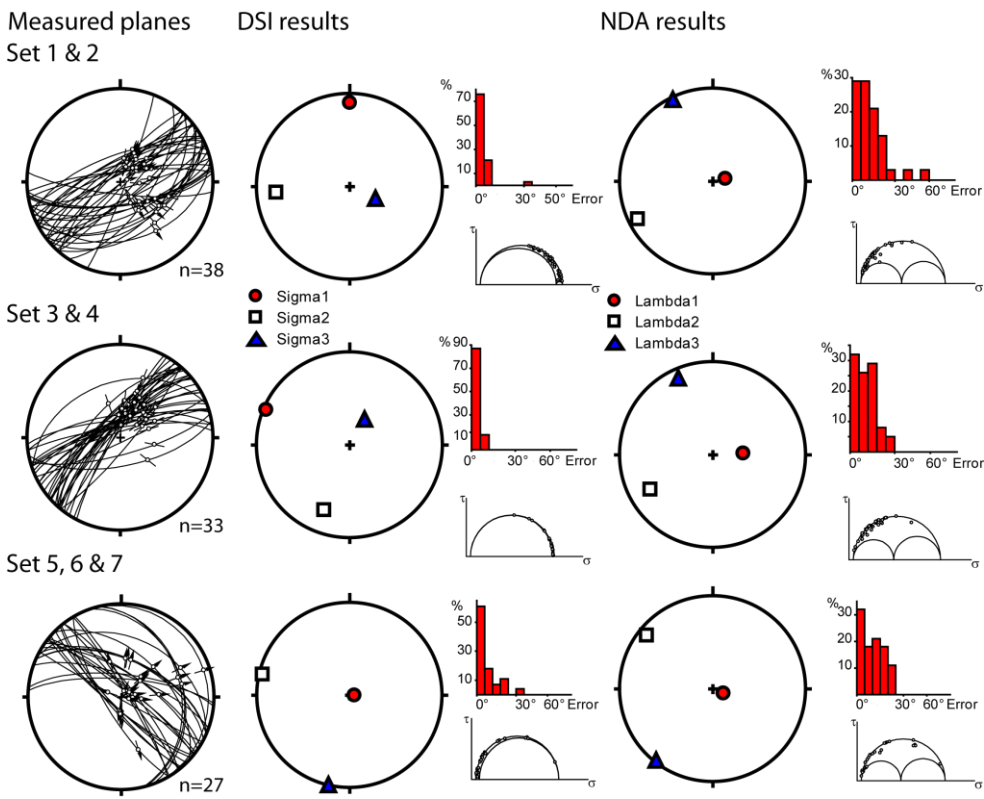


Fig. 6: Fault plane orientation – slip direction and paleostress (DSI) and paleostrain (NDA) results (for the three sets) from CHJ (Fig. 3a). The separation is based on Johansen et al. (2005), with kinematically related sets combined into a single data set.

585

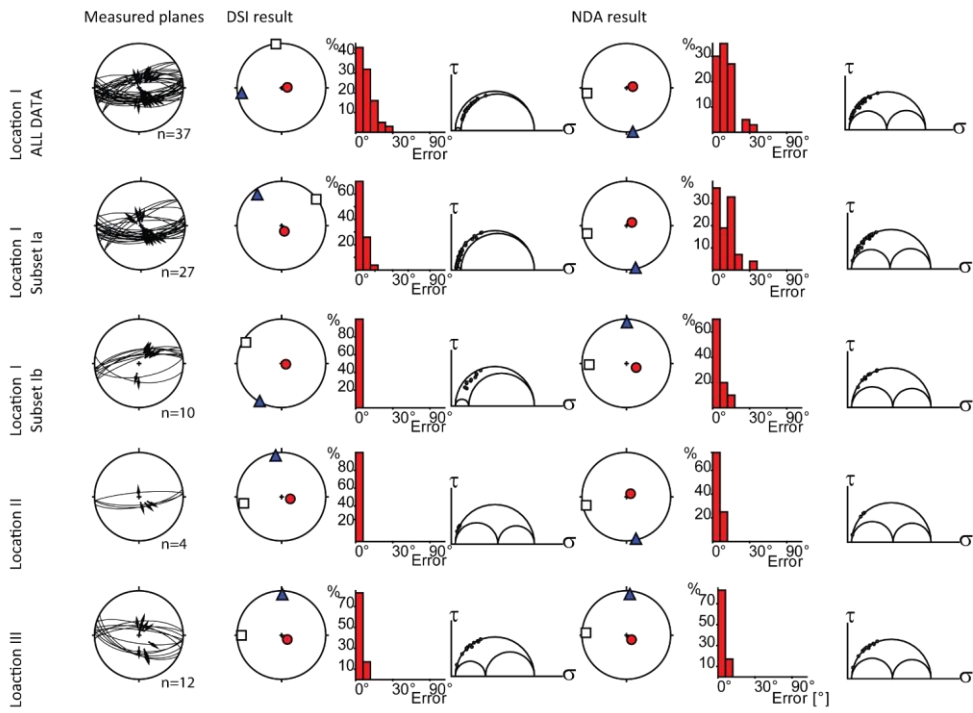


Fig. 7: Fault plane orientation—slip direction and paleostress (DSI) and paleostrain (NDA) results from Locations I-III along Segments B and C. No paleostress results are shown for location IV, as the number of observations here was too low to obtain a valid result.

590

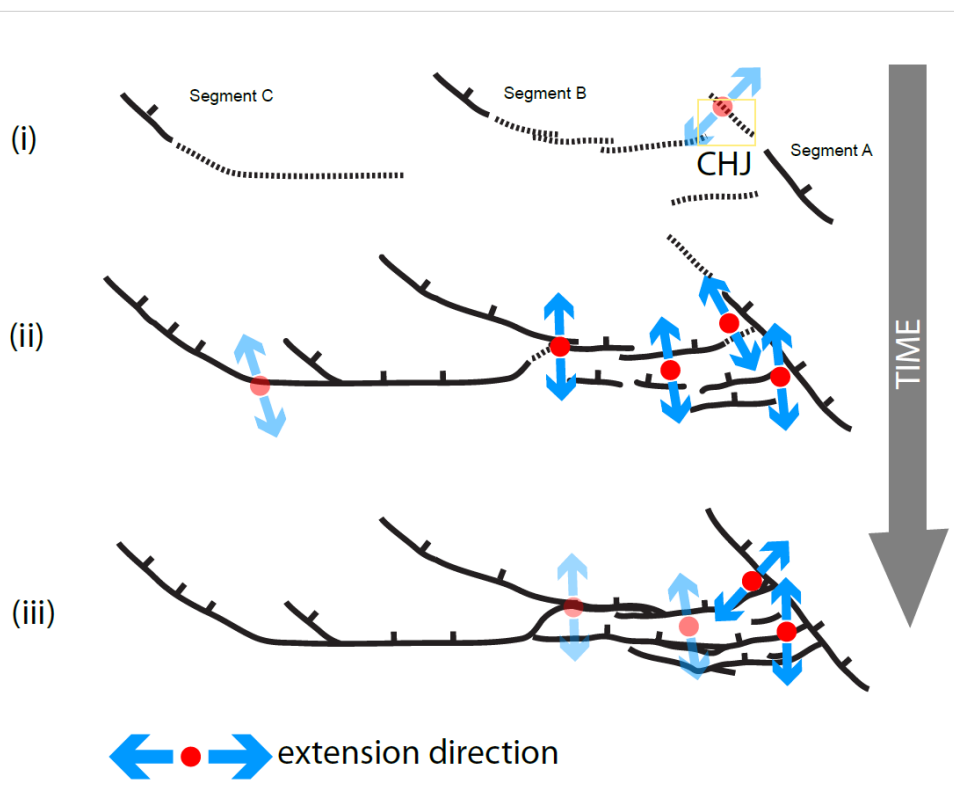


Figure 8: Sketch of the evolution of the Courthouse branch point (CHJ). Broken lines are damage zones in front of normal faults (lines) (see Peacock e 2011b). Blue arrows point in the direction of extension, light blue symbols are inferred. i) The faults are isolated. The Moab fault (Segment A) forms under the influence of the regional NE-SW extension direction (based on fault undulations on segment A and the thick deformation bands set, described by Johannsen et al. (2015). ii) When Segment B, initially formed as a parallel fault, starts to rotate and approach Segment A, the segments becomes kinematically linked, and the minimum principal stress rotates at CHJ to NW-SE (Deformation band sets 1&2 and 3&4. iii) When Segment A and B connect and become hard-linked or geometrically linked, the minimum principal stress at CHJ rotates back to the regional stress state (deformation band Set 5,6&7). The outline of these sketches corresponds roughly to the rea shown in Fig. 3b.

595

600