

Interactive comment on “Seismic waveform tomography of the Central and Eastern Mediterranean upper mantle” by Nienke Blom et al.

Nienke Blom et al.

nienke.blom@esc.cam.ac.uk

Received and published: 6 March 2020

In the manuscript we have now included a further discussion of anisotropy. We were initially hesitant to provide a further discussion of anisotropy, because the sensitivities to the different parameters vary substantially, and it is fundamentally impossible to separate intrinsic and extrinsic anisotropy. We have now adapted Figure 8 and included a new figure with anisotropy depth slices. We have also included some discussion in the text including the above caveats, which hope this provides a good balance.

Interactive comment on Solid Earth Discuss., <https://doi.org/10.5194/se-2019-152>, 2019.

C1

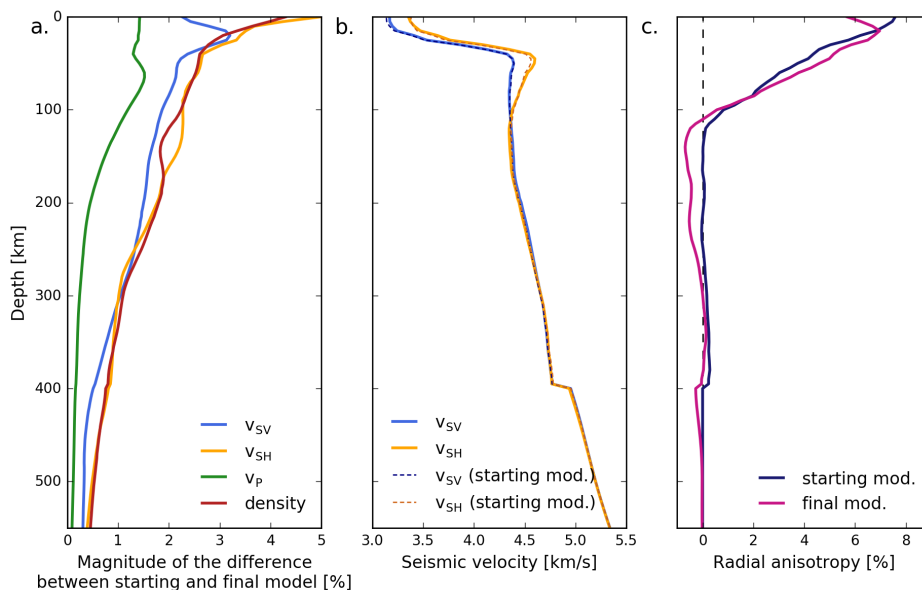


Fig. 1. Updated Figure 8, including a panel with depth averaged anisotropy

C2

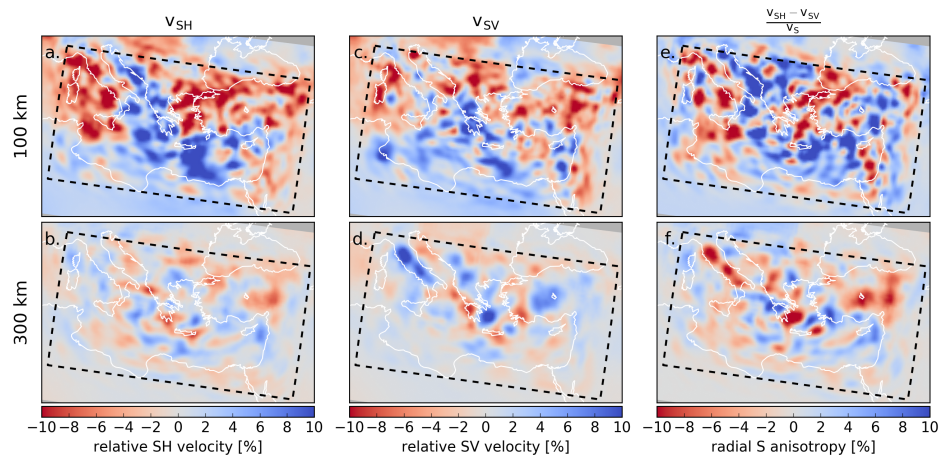


Fig. 2. New anisotropy figure (new Fig. 11).