

# ***Interactive comment on “Seismic waveform tomography of the Central and Eastern Mediterranean upper mantle” by Nienke Blom et al.***

**Nienke Blom et al.**

nienke.blom@esc.cam.ac.uk

Received and published: 6 March 2020

In the manuscript we have now included a further discussion of anisotropy. We were initially hesitant to provide a further discussion of anisotropy, because the sensitivities to the different parameters vary substantially, and it is fundamentally impossible to separate intrinsic and extrinsic anisotropy. We have now adapted Figure 8 and included a new figure with anisotropy depth slices. We have also included some discussion in the text including the above caveats, which hope this provides a good balance.

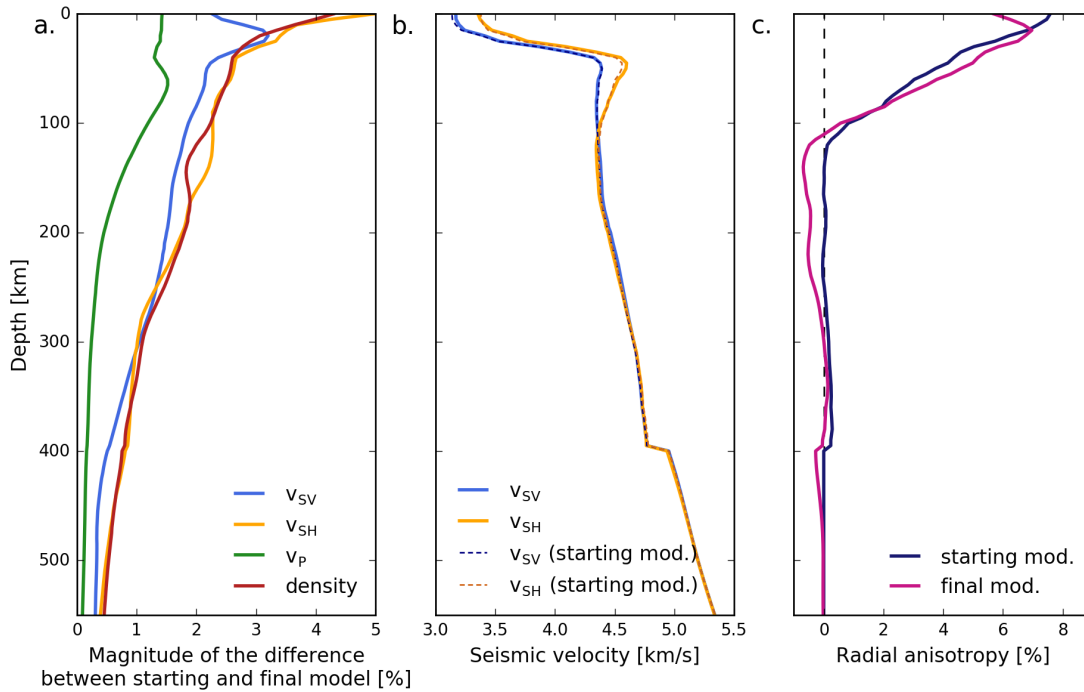
---

Interactive comment on Solid Earth Discuss., <https://doi.org/10.5194/se-2019-152>, 2019.

Printer-friendly version

Discussion paper



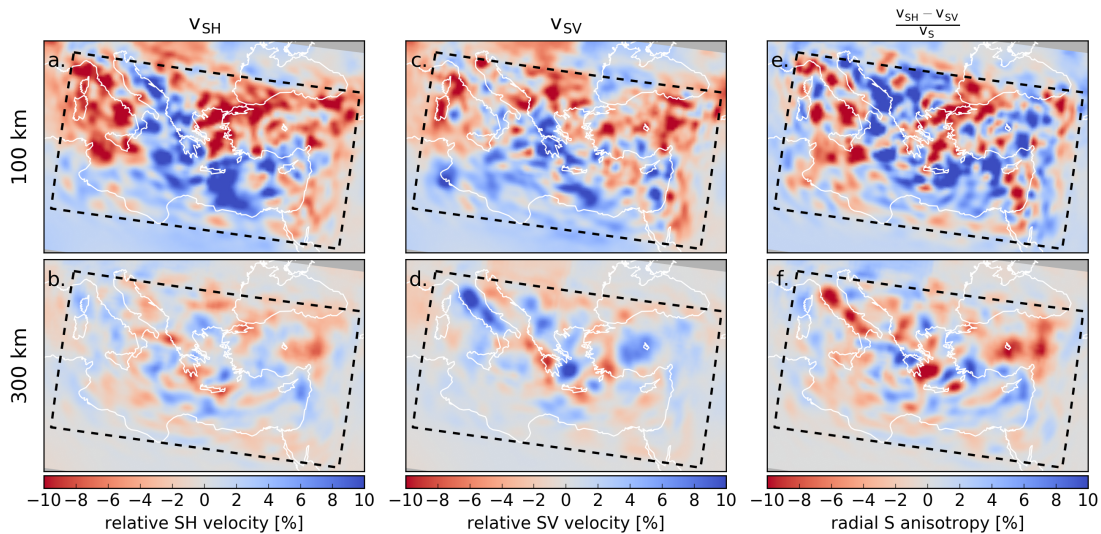


**Fig. 1.** Updated Figure 8, including a panel with depth averaged anisotropy

Printer-friendly version

Discussion paper





**Fig. 2.** New anisotropy figure (new Fig. 11).

Printer-friendly version

Discussion paper

