

General comments concerning the revised manuscript

What follows is the revision of our manuscript ‘Seismic waveform tomography of the Central and Eastern Mediterranean upper mantle’ by Blom, Gokhberg and Fichtner.

We adapted our manuscript according to the comments raised by the reviewers, and reply to each of their points separately in the separate documents supplied. The most important changes concern:

- **Density.** in the original version of the paper we did not discuss density in great detail, although the fact that we invert for density is different from the usually taken approach. We have now extended the discussion on the possibilities for retrieving density, and have included relevant references.
- **Methodological clarifications.** It was apparent from the reviewers’s comments that parts of our workflow required clarification. This has been incorporated partially into the manuscript, partially in the Supplementary Material.
- **Other models.** Both reviewers raised the point that a comparison with other work could be incorporated into the paper. Although this is not the focus of the present study, we have included some additional text to this effect in the results and discussion sections, and have added a further comparison to the model UU-P07 (Amaru, 2007) in the Supplementary Material.

A point-by-point discussion of the reviewers’s comments follows below.

Best wishes,

Nienke Blom (University of Cambridge)

Alexey Gokhberg (ETH Zürich)

Andreas Fichtner (ETH Zürich)

Response to Reviewer 1

Comments by Reviewer 1 in blue, answers in black.

It is generally a well-written manuscript, however, there are a few issues to be highlighted. The authors state that the focus is on the methodological part which is pretty similar to Fichtner et al. and Krisher et al. except for inverting for density. The method part may be shortened to avoid repetitions. The main difference compared to most of the previous FWI studies is the simultaneous inversion of density with wavespeeds. However, there are also other examples in literature from exploration to lithospheric studies where density is also inverted, but they are not cited. It is worthwhile to have a complete literature review, and it would also be more insightful to compare the results of density inversions to those previously published tomographic studies.

We feel that shortening the methodological part would risk deteriorating the repeatability of the work, and therefore respectfully prefer to keep it in the current format. While we have attempted to invert for density, we did not overly stress this particular aspect, because of the inconclusive results regarding this parameter in our study. Nevertheless, we have expanded the section discussing the density model and its limitations, referencing some relevant literature and discussing possible avenues to move ahead this field. This is now discussed in a separate section (Section 6.4).

On the other hand, the message of the paper needs a bit of clarification. The authors very briefly discuss the potential reasons for the failure of retrieving density in conclusions. However, it is not clear if density can indeed be retrieved or not in FWI. If not, is it better not to invert it, or is there any advantage of inverting for it despite the trade-off between seismic parameters? It would be helpful to extend these discussions considering the results of other studies.

Especially in the case of exploration seismology, results regarding density seem to be encouraging. This has all to do with the fact that information derived from impedance contrasts can be used much more efficiently thanks to the availability of reflection data. Other factors include the controlled-source aspect of such studies and the source and receiver density. In favourable set-ups, such results may be used on lithospheric scales as well – especially if higher frequency data is used. In our case, however, the data are clearly transmission-dominated, meaning that reflection data are virtually absent. This is very similar in other applications at this spatial scale. Nevertheless, as we have shown in Blom et al. (2017), including density as a free parameter is important to avoid contamination of the reconstructed velocity distributions. A more in-depth discussion of density is included in Section 6.4 of the paper.

Some further detailed comments are as given below:

Page 2, line 40, last sentence: The authors state that not only P and S wavespeeds but also density can be constrained by full-waveform inversion. However, the results of the study seem not promising to support this statement. The authors discuss the potential reasons, but they do not discuss much what should be done to retrieve density or what the strategy in future studies should be. Will taking full anisotropy and attenuation into account in inversions help retrieve the density model correctly?

We agree that this was a deficiency of the original manuscript. This is improved in the revised version. Though we were optimistic at the beginning of this study, we now see our ability to constrain 3-D density much more critically. Taking other parameters, including more complex

anisotropy or attenuation, into account is unlikely to help. This is because any increase in the total number of model parameters can only act to decrease resolution. The actual crux of the problem is that sensitivity to density is so small that the recovered density model is strongly affected by unavoidably subjective regularisation. In this sense, a way forward would be to replace the current deterministic inversion by a fully probabilistic inversion that does not require regularisation. Then, at least, one would obtain complete and honest information about our state of knowledge on 3-D density inside the Earth. Research in this direction is underway [e.g., Gebraad et al., 2020. "Bayesian elastic full-waveform inversion using Hamiltonian Monte Carlo", JGR, in press]

Page 5, line 115: Parameterization is an important decision in FWI to capture the physics of the medium. It is not clear if the authors are inverting for only SV and SH wavespeeds for radial anisotropy or also the anisotropic parameter η .

The anisotropic parameter η is not inverted for. The more parameters are included in an inversion, the less well constrained it becomes. η is constrained by P-waves with variable incidence angle, for which we have too little data to constrain it properly. More broadly speaking, there is currently no 3-D heterogeneous model of η at regional to global scales. (This is different in exploration, where the necessary data may indeed be available.) We have formulated more clearly in the paper which exact parameters are inverted for (Section 4.1).

Why was not the amplitude information used in the misfit, which may be more sensitive to density variations?

Amplitudes are so sensitive to local velocity variations and source magnitude, that the risk of accidentally polluting the inversion would be too strong. Some amplitude information is used in the misfit indirectly: the relative amplitudes within a window. This does give valuable additional constraints on all parameters.

The manuscript nicely summarizes the strategies considered in the inversion algorithm. However, it is not described how the crust was considered in simulations and inversions, which can have a significant effect on the constructed model. Besides, focusing on a subdomain of the model of Fichtner et al. by performing ~ 95 iterations, one would expect higher resolution in the model, which also deserves investigation of depths shallower than 60 km where some interesting crustal features may be observed.

The initial crust was implemented in the form of a velocity gradient, meaning that the initial model has no sharp crust-mantle discontinuity. This approach is widely used in regional- to global-scale tomography [e.g., Fichtner & Igel, 2008; French et al., 2014], and it essentially served two purposes: (1) The absence of a discontinuity facilitates the construction of a finite-element mesh, and in particular, it avoids the presence of very small elements. (2) An initially smooth transition between crust and mantle allows the data to actually modify its sharpness. Thus, in the final model, the velocity gradient from crust to mantle is as sharp as required by the data. The disadvantage of this approach lies in a limited interpretability of the final model in the sense that no sharp separation between crust and mantle exists. (To illustrate resolution at shallower depth, we added to the Supplementary material a new depth slice at 50 km depth for the spike tests.) The shortest periods in the simulations are 28 seconds, which limits the amount of detail present in the final model – irrespective of the number of iterations.

Section 4.3: It would be good to mention the smoothing and/or pre-conditioning strategies if applied.

In summary, the preconditioning amounts to the 99th percentile clipping, removal of information close to the edges, and smoothing. The latter two are informed by the frequency band (and resulting typical wavelengths) of the wave propagation in each iteration, and become smaller / finer as the inversion goes to shorter periods. The exact parameters used for each iteration are explained in full detail in the Supplementary Material, and we have added a clarification in the manuscript text referring to this.

Section 4.4: To my understanding, the starting model has multi-resolution (smooth global model, inverted European model, and higher-resolution Anatolian model), and a smoothed version of it is used. What is the resolution or the degree of smoothness of the chosen model to start iterations?

Indeed the starting model has several levels of resolution. However, no additional smoothing was applied prior to the inversion presented in this work. We have added information on the resolution lengths of the starting model.

Figure 2: There are quite some small-scale variations (smaller than those in velocity models) in the starting model of density. How was density constructed in the starting model? How good is it to start with?

In the starting model, density was not treated in any specific way, although it was updated along with the other parameters and also smoothed strongly. Because of this, density in the starting model has no particular interpretative value.

Figure 6: Why is the histogram split into two parts? Why is there a gap around the zero phase shift?

This is a result of the way the adjoint source computation is implemented for the time-frequency misfit. Internally, a decision algorithm attempts to filter out the windows in which the traces are too dissimilar to allow for a meaningful comparison. This algorithm happens to include a criterion based on a division by the maximum absolute phase shift within a TF window. This would be a very small number if the traces are very similar, and the resulting criterion big, which results in rejection. In other words, the window has a high risk of being (erroneously) rejected if the traces are very similar. This is of course a very crude algorithm, but the effect of this can be offset by slightly adapting the windows. As a result, however, the windows with a near-zero phase shift disappear from the distribution which is, as a result, very much non-Gaussian.

Figure 10: Looks like there is a strong anti-correlation between P- and S-wavespeed models (i.e., the S-wavespeed model shows all slow wavespeed in continents, and fast wavespeed in oceans at shallower depths whereas the P-wavespeed model is predominantly fast). There is also a sharp boundary in the P-wave model on the Eastern part. How do the authors interpret these anomalies? Are these features also observed similarly in other tomographic models?

We agree with the reviewer that at first sight there does appear to be an anticorrelation, however upon closer inspection this turns out to be not actually the case – the P-wave model is fast in general. The sharp boundary in the P-wave model shows the boundary between the non-updated and updated parts of the model domain, i.e. where there is data coverage and where there is none.

Figure 15: Looks like the Gaussian anomalies used in the spike-tests of the P-wave model are larger than those of S-wavespeeds and density. Is it a plotting issue (or illusion?) or any specific reason for choosing it to be like that? It would be more insightful to show the spike-test results at other depths as well.

Indeed, there seemed to be a plotting issue. The figure has been adapted, and the supplementary material now contains further slices at 50, 300, and 500 km depth.

The authors have performed ~ 95 iterations, plus five additional iterations for every parameter during the spike tests. It is a large number of iterations. How expensive is each iteration? Or what is the overall computational cost?

In Table 1, the column $n_x * n_y * n_z * n_t$ is a measure of computational cost per simulation. As the computational cost of waveform simulations scales to the fourth power of the maximum frequency, the bulk of the computational cost is in the final iterations; the first 50 iterations therefore represent less than $\frac{1}{4}$ of the total computational cost. Giving an absolute number of wall-clock time or GPU time is less informative, because it is very much dependent on the machine the simulations are run on. The same holds for e.g. (estimates of) energy consumption. The cluster that was used in our case was upgraded halfway through the work, which means that 'before' and 'after' values would not be comparable.

Response to Reviewer 2

Comments by Reviewer 2 in purple, answers in black.

(1) The authors claim that they also include radial anisotropy in their inversion, however, I cannot find any results for radial anisotropy in this manuscript. I strongly recommend the authors to present these solutions in order to make the statement consistent.

Information on the different Vsh and Vsv models is already presented in Figure 8 in the paper.

(2) It seems to me that the ETH group has published a number of papers on the same region (Europe) using the same approach (FWI). Why publishing another one or performing another inversion for the same target? What is the long term goal of this group for imaging the European upper mantle using FWI? Just including more data and publishing another paper once a while is not a good scientific exploration as far as I consider. For instance, I can list some papers which are similar to this manuscript. Can the authors provide some statements about significant improvements of this work in comparison to their previous work? Such as (1) Fichtner and Villasenor, 2015, EPSL; (2) Rickers et al, 2013, EPSL; (3) Fichtner et al, 2013, EPSL.

First, we note that science generally has two components: the development of new methods, and their application to new data. Both modes of operation are legitimate and needed to ensure progress, and one is not *per se* better than the other.

Second, we would like to point out that none of the publications listed above covers the region studied here. Fichtner & Villasenor (EPSL, 2015) considered the Western Mediterranean, with a focus more than 2000 km away from the current one. Rickers et al. (EPSL, 2013) studied the North Atlantic, with a focus on Iceland and Jan Mayen, more than 3000 km to the north of this study. Finally, Fichtner et al. (EPSL, 2013) focus on the Anatolian micro-plate and the North Anatolian Fault zone, to the east of the current study region. The work of Fichtner et al. (GJI, 2013), not listed above, covers all of Europe and Western Asia. Though this study includes the Eastern Mediterranean, it uses only around half of the amount of data for a model volume that is more than 100 times larger. Thus, Fichtner et al. (GJI, 2013) operated at a completely different scale in all respects.

This said, it is clear that the present study is entirely independent from the ones we did before, and it focuses on a region that had not been studied with the help of full-waveform inversion. Given the geologic relevance of the Eastern Mediterranean, we believe that our work is therefore more than justified.

(3) In fact, From Figures 7 and 14, I am surprised to see that predicted seismograms from their starting model (Fichtner et al, 2013) have such large mismatches in comparison to observed waveforms, even for this long-period frequency band. If their previous model is already good enough, we should not see such significant differences.

As explained in the response to the previous question, Fichtner et al. (GJI 2013) used a significantly smaller amount of data for a model volume that was orders of magnitude larger. Furthermore, the shortest period in Fichtner et al. (GJI 2013) was around 50 s, i.e., around twice as large as the shortest period used here. In summary, it is not at all surprising that the Eastern Mediterranean part of the 2013 model does not explain the shorter-period data at much smaller scale considered here.

This high misfit immediately serves as another motivation to carry out this work – clearly the existing models are insufficient.

(4) The authors just present their own tomographic model. In fact, the Mediterranean region is well studied by using either travel time tomography or even full waveform inversion by other groups. The authors ignored the same endeavor towards FWI imaging for the European crust and upper mantle by other groups. I wonder how their current model compares with other previous tomographic or FWI models? As far as I can tell from their Figure 12, the resolution for subducting slabs underneath the Mediterranean is quite low in comparison to previous travel time tomography (Wortel and Spakman, 2000, Piromallo and Morelli, 2003) or FWI models (Zhu et al, a series of studies). I strongly suggest the authors to make some comparisons with these previous studies, in order to convince the readers about the advantages or disadvantages of their current inversion.

We have added additional figures to the Supplementary Material, where we compare our final model to the Utrecht model UU-P07 (Amaru, 2007; this model is the successor of the model used in Wortel & Spakman, 2000). There is a clear correspondence between the models, which is encouraging given the fact that we compare a travel-time P-velocity model and a waveform S-velocity model. As is visible from these figures, the models have similar levels of detail as our final model – something similar holds for the models of Piromallo & Morelli (2003) and Zhu et al (2015). It may have appeared that there is more detail in the models mentioned by the reviewer, because those are usually viewed on a larger scale – in particular UU-P07, which is a global model. The advantage of zooming in, as we do, is that there is a lot more information, and as a result, e.g. the amplitudes of the anomalies are stronger.

(5) The authors claim that their model has good resolution down to the mantle transition zone. However, in their horizontal cross sections (Figure 10), I only see results down to 300 km. I suggest they to put more slices, say from 400 to 700 km.

We do not claim they have good resolution down to the mantle transition zone – only in some parts is the model updated down to the mantle transition zone. This is already summarised in Figure 8 of the paper, and we have now added further depth slices through both the final model and the resolution tests in the Supplementary Material.

(6) For vertical cross sections (Figures 12 to 13). I don't see any reasons to put slices with absolute velocity here. Since they will be dominated by 1D structures, in particular for the mantle transition zone, which involves velocity jumps across 410 and 660. I suggest only show relative velocity perturbations in their right panel.

One of the largest added benefits of using waveform tomography is the fact that we get access to absolute velocities. Any thermodynamical interpretation relies heavily on absolute velocity – see for example Deschamps & Trampert, 2003; Cobden et al, 2008, 2009, 2018. For this reason we prefer to show both types of cross-section.

(7) In fact, for the Hellenic subduction (Figure 13), numerous previous studies have demonstrated that the Hellenic slab can penetrate the 660 km discontinuity down to the lower mantle (from either travel time tomography or FWI), however, the authors' result seems different from previous conclusions. Do we need to re-evaluate this consensus, or the authors' model does not have enough resolution to resolve it?

We agree with the reviewer that the initial formulation here was unfortunate; by no means did we intend to imply that the Hellenic slab must terminate near the MTZ! We have rephrased this part of the text to clarify this.

(8) For waveform comparisons, such as Figures 7 and 14, the authors only show comparisons between observed and predicted seismograms for a couple of station-source pairs. However, as pointed out by the authors, there are numerous seismograms. I am not surprised to see some improvements for some selected pairs of earthquakes and stations. How about other pairs? Since there are many stations in the authors' dataset, why not plot all three components (vertical, radial and transverse) for most data and predictions, just like common-shot gathers as did by exploration seismologists. I think that will be a better way to convince the readers that their model can really explain data, instead of just intentionally or randomly selecting some pairs with good match. In addition, I suggest the authors to change color for predicted seismograms from the starting model, such as blue or other colors different from the current waveforms.

We have experimented with this. In the end we find that a comparison of single traces give the most insightful results, as is commonly done in waveform tomography. A record section, for our setup, results in the interference of too many different phases that are a result of significant 3-D structure. A record section may be more suitable in a situation where all receivers are located roughly in a line, as is the case for e.g. Beller et al (GJI, 2017). As a compromise we have included figure 6 which shows a very detailed misfit development.

(9) Figure 3, why changing iteration numbers for different frequency bands? In order to demonstrate that their model can fit data for different frequency ranges, I suggest just compare the starting one with their current model (100th iteration).

Figure 3 is meant as a demonstration of the multiscale method, and shows that the chosen points to include higher frequency content are suitable. This is why we prefer to show the iterations as given in the figure.

(10) Figure 4, it seems to me that the color of panel d is highly saturated, then they can see a strong banana kernel, how about using some reasonable colors. In addition, do they need to add additional weighting coefficients in order to use both body and surface waves for this inversion?

The colour scale in panel d is intentionally made the same as the colour scale in panels e and i. This oversaturation is the only way to make the kernels for all windows visible. This is intended as an illustration of the power of the windowing strategy: because of the significant phase shift visible in the body waves, the gradient in v_p is much stronger for this window than for the surface wave window. This information would be lost almost entirely if a single window were taken for both arrivals. No additional weighting is included – this happens automatically through windowing.

(11) Figure 11, I suggest to plot iso-surface for relative velocity perturbation instead of absolute values, which is a typical way to examine subducting slabs.

With waveform tomography, we have a method that comes with the luxury of giving us absolute velocities. We are taking advantage of that because it directly feeds into thermochemical interpretation – this is the reason that we show these. Moreover, compared to the anomalies, the background variations are relatively minimal, so showing relative instead of absolute velocities will not make a very large difference.

(12) In section 6.2, in order to evaluate their model, the authors chose additional 6 earthquakes as an independent dataset. As far as I can tell, this is a very small dataset to convince the readers that their model can explain waveforms that are not used in the inversion. I strongly suggest them to increase the size of this independent dataset.

We used events that cover the study area well. We would understand the argument if the events would cluster, but they don't. Doing more would just inflate the manuscript and result in unnecessary additional computational cost.

Some minor modifications: [...]

We have implemented the suggestions given by the reviewer.

Seismic waveform tomography of the Central and Eastern Mediterranean upper mantle

Nienke Blom^{1,3}, Alexey Gokhberg², and Andreas Fichtner²

¹Bullard Laboratories, Department of Earth Sciences, University of Cambridge, Madingley Rise, Cambridge CB3 0EZ, United Kingdom

²Department of Earth Sciences, ETH Zürich, Sonneggstrasse 5, 8092 Zürich, Switzerland

³previously: Department of Earth Sciences, Universiteit Utrecht, Princetonlaan 8A, 3584 CB Utrecht, Netherlands

Correspondence: Nienke Blom (nienke.blom@esc.cam.ac.uk)

Abstract. We present a seismic waveform tomography of the upper mantle beneath the Central and Eastern Mediterranean down to the mantle transition zone. Our methodology incorporates in a consistent manner the information from body and multimode surface waves, source effects, frequency dependence, wavefront healing, anisotropy and attenuation. This allows us to jointly image multiple parameters of the crust and upper mantle.

5 Based on the data from $\sim 17\,000$ unique source-receiver pairs, gathered from 80 earthquakes, we image radially anisotropic S velocity, P velocity and density. We use a multi-scale approach in which the longest periods (100–150 s) are inverted first, broadening to a period band of 28–150 s. Thanks to a strategy that combines long-period signals and a separation of body and surface wave signals, we are able to image down to the transition zone in most of the model domain.

Our model shows considerable detail in especially the northern part of the domain, where data coverage is very dense, and
10 displays a number of clear and coherent high-velocity structures across the domain that can be linked to episodes of current and past subduction. These include the Hellenic subduction zone, the Cyprus subduction zone and high-velocity anomalies beneath the Italian peninsula and the Dinarides. This model is able to explain data from new events that were not included in the inversion.

1 Introduction

15 Since the late 1970s (Dziewoński et al., 1977; Aki et al., 1977), seismic tomography has emerged as the primary method for imaging the Earth’s interior from the kilometre to the global scale. On regional to continental scales, the 3-D images can help to decipher the tectonic situation and history of an area by linking the surface observations to structures deeper in the mantle: high-velocity structures have been associated with subduction since the earliest days of seismic tomography.

The Mediterranean in particular is an area that has attracted much attention from the beginning – not in the least because
20 of its strong seismicity and good data coverage. Classical ray tomography has been applied numerous times to study this area, both using body and surface waves (e.g. Spakman et al., 1988; Pìromallo and Morelli, 1997, 2003; Amaru, 2007; Biryol et al., 2011; Koulakov et al., 2015; Portner et al., 2018; Snieder, 1988; Zielhuis and Nolet, 1994; Marone et al., 2004; Schivardi and Morelli, 2009; Salaün et al., 2012; Legendre et al., 2012).

As data availability increased, structures have thus been imaged with increasing amounts of detail. In the past, this has already
25 led to hypotheses on the kinematics of the Mediterranean region that were testable against independent surface geological data
(see e.g. Wortel and Spakman, 2000; Faccenna et al., 2014). Nevertheless, ambiguities remain: in particular the differences
between body and surface wave studies can be striking, where surface wave anomalies are generally of larger amplitude, but
laterally smoother. Another difficulty is the connection between the crust and mantle, with most methods relying on some input
30 crustal model whose accuracy may vary, depending on location (e.g. Bozdağ and Trampert, 2008; Laske et al., 2013; Fichtner
et al., 2013b).

Continuing improvements in computing power have meanwhile facilitated the development of waveform tomography tech-
niques (also referred to as full-waveform inversion or adjoint tomography), that allow us to fully account for the physics of
wave propagation in 3-D heterogeneous media. By directly comparing observed seismograms with a simulated 3-D wave-
field, a wealth of information can be extracted from the data. While computationally more expensive than ray-based imaging
35 methods, the advantage of waveform methods lies in their ability to incorporate in a consistent manner all the information in
seismograms – not just the arrivals of certain, specified phases. As a result, body and multimode surface waves, source effects,
frequency-dependence, wavefront healing, anisotropy and attenuation are naturally and coherently incorporated. The use of
such a forward and inverse modelling technique largely excludes modelling artefacts in the imaging. Issues like the contamina-
tion of mantle structure that results from insufficient crustal corrections can thus be avoided (e.g. Montagner and Jobert, 1988;
40 Bozdağ and Trampert, 2008). This makes waveform tomography especially suitable for imaging tectonically active parts of the
Earth such as the Mediterranean, where large contrasts in elastic properties are likely to be present. It thus allows us to image
S-wave and P-wave velocity jointly for the crust and mantle, but also makes it possible to put constraints on density that ray
tomography cannot provide.

1.1 Objective and outline

45 In this study, we use waveform tomography to image the upper mantle beneath the Central and Eastern Mediterranean, inverting
for the seismic velocities v_{SH} , v_{SV} and v_p as well as density ρ . Compared to the earlier, larger scale European model of Fichtner
et al. (2013b), our study provides a more local and zoomed-in model with clearer features that display stronger amplitudes.
In the present study, we pay particular attention to developing a strategy that optimises the sensitivity to the deeper parts of
the model domain by **combining long-period surface wave data with a window selection strategy optimised for the selection**
50 **of short period body wave signals**. This **paper** focuses on the technical construction of the model, discussing in detail the used
methodology and the uncertainties and caveats of the methods and results. While we will highlight some key features of the
resulting model, a detailed geological discussion will be the subject of a follow-up study.

After a brief introduction to the geological setting of the Mediterranean (Section 2), we will focus on the methodological
aspects of the waveform tomography executed, discussing the model domain and data selection (Section 3) as well as the
55 inversion setup (Section 4). The latter includes a description of the effects of window selection on the inversion. In Section
5, we discuss the main features of the resulting model, after which Section 6 is dedicated to validity tests of the model and a
discussion of the limitations of the methodology.

2 Geological setting

Slow convergence between the African and Eurasian plates dominates the geological and tectonic setting of the Mediterranean domain (McKenzie, 1972; Dewey et al., 1989; Wortel and Spakman, 2000; Faccenna et al., 2014). This convergence (approx. 6 mm/yr, Reilinger et al., 2006) is currently mainly accommodated in the Alpine arc, the Hellenic Arc and through complicated interactions between several plates and microplates present in the domain.

The Mediterranean is comprised of two basins of contrasting characteristics. The Western Mediterranean consists of young oceanic lithosphere (~30 Ma and younger, Wortel and Spakman, 2000), and the Central/Eastern Mediterranean is predominantly old (up to 340 Ma, Granot, 2016). This dichotomy is ultimately a result of the collision of the Adria plate (a promontory of the African plate) with the Eurasian crust at the location of the Alps – effectively cutting the basin in two (Channell, 1996; Faccenna et al., 2014). The young Western Mediterranean formed during subsequent opening of the Liguro-Provençal and Tyrrhenian basins as a result of **slab roll-back** (Faccenna et al., 2004). This rotated what is now the Italian peninsula to its current NW–SE orientation and resulted in the formation of the Apennines. It also brought Corsica and Sardinia from Iberia to their current locations and resulted in the steeply dipping Tyrrhenian subduction zone (e.g. Spakman and Wortel, 2004; Koulakov et al., 2015). The Central/Eastern Mediterranean, on the other hand, consists mainly of old African oceanic lithosphere – with the exception of the Aegean Sea, where current subduction beneath the Hellenic Arc and **slab roll-back** towards the south-west and south have resulted in a young extensional basin (e.g. McKenzie, 1978; Jolivet et al., 1994).

Several relatively large microplates play significant roles in the system (Figure 1a). On the eastern end of the Mediterranean, the Arabian plate is moving northwards towards Eurasia along the Dead Sea Fault. **West of the Arabian plate, the Anatolian microplate moves westwards relative to Eurasia and Arabia. This is accommodated by the North Anatolian Fault and East Anatolian Fault.** Continuing west, the Aegean microplate moves in a SW direction relative to Eurasia. The combination of these motions results in a counterclockwise rotation that has been attributed to the rollback of the Hellenic slab and effects of mantle convection and gravitational potential energy as a result of Anatolia's high elevation (Faccenna et al., 2014). Another subduction zone is visible beneath Cyprus, which some consider to be separated from the Hellenic subduction through the formation of a **subduction-transform edge propagator (STEP)** fault (Govers and Wortel, 2005; Özbakır et al., 2013).

3 Model domain and data

3.1 Choice of model domain

The chosen study area covers most of the Central and Eastern Mediterranean. This includes the tectonically interesting regions of the Italian peninsula, the Hellenic Arc and Anatolia, but also stretches towards the south to include the African coast (Figure 1). In order to avoid artificial reflections from the boundaries when simulating wave propagation within this model domain, a buffer zone with absorbing boundaries is implemented (Cerjan et al., 1985).

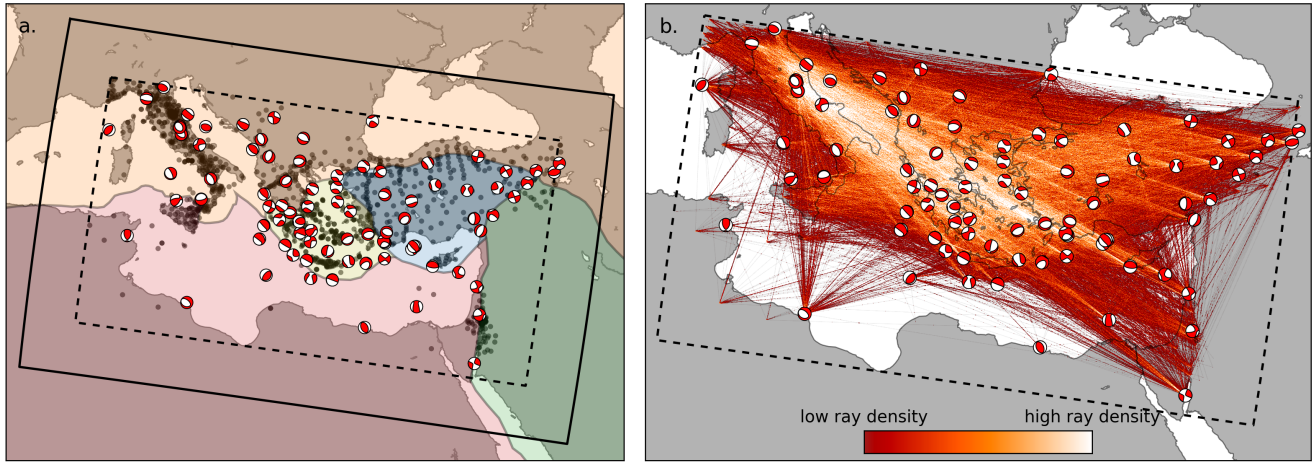


Figure 1. (a) The modelling domain in the Central and Eastern Mediterranean, with tectonic plates taken from Bird (2003): Africa in red, Eurasia in orange, Aegean in yellow, Anatolia in blue and Arabia in green. Superimposed on top of this are the earthquakes used in this study (red-white focal mechanisms), and the locations of all seismic stations (black dots). A 3° buffer zone separates the outer and inner model boundaries (solid and dashed lines, respectively). Within the buffer zone, wave propagation energy is absorbed that would otherwise result in artificial reflections. (b) An impression of “ray density” in the model domain, based on the great circle paths of all traces used in this study. This is just a rough proxy of coverage, serving only to highlight the variability and directionality of the coverage.

3.2 Data selection

The inversion is carried out using data from around 80 earthquakes that occurred within the model domain between 1998 and 2017 (Figure 1a, Supplementary Table 1). Most of the tectonic activity is in the north of the model domain, so in order to obtain a coverage that is as homogeneous as possible, events are initially selected manually from the IRIS SPUD moment tensor catalog (<http://ds.iris.edu/spud/momenttensor>). Additional events are then obtained using automatic event selection from the Large-scale Seismic Inversion Framework package (LASIF; Krischer et al., 2015, <http://lasif.net>).

All moment tensors are taken from the Global CMT Project (Ekström et al., 2012; Dziewonski et al., 1981, <http://www.globalcmt.org>). Seismograms are downloaded automatically from the IRIS, ORFEUS, ETH, GFZ, and KOERI data centres using the LASIF package. Since especially the depth and the moment tensor components linking horizontal and vertical motions can be poorly constrained when determined from long-period data (e.g. Jackson, 2001), we manually monitor the suitability of the earthquake data at all stages during the inversion. We excluded events that provided too few reliable measurements, e.g. because of cycle skipping or noise issues. In a few cases, we relocated or changed the timing of events where the (spatial) distribution of phase shifts indicated a clearly interpretable pattern (see Section 2 of the Supplementary material).

This approach results in around 80 events at the beginning of the inversion, corresponding to about 17 000 event-station pairs or 50 000 single-component channels, with a coverage that is excellent in the north but limited in the south (Figure 1b). A table containing all earthquakes is available in Supplementary Table 1.

4 Inversion setup

105 We perform regional waveform tomography by comparing the observed seismograms to synthetic seismograms, computed for subsequent iterations of model updates. Our inversion uses a deterministic, gradient-based iterative approach, such that the synthetic seismograms for consecutive models progressively provide a better match with the observed data. This optimisation method is local: updates are obtained by continuously moving in a direction of descent. There is therefore no guarantee that it will descend towards the global minimiser, i.e. the (set of) model(s) that would result in the lowest total misfit. The resulting
110 model is therefore a function of several important strategies and choices, which are discussed below.

4.1 Seismic wave propagation

Synthetic seismograms are computed by simulating seismic wave propagation in 3-D within the model domain. Here, we solve the wave equation

$$\rho(\mathbf{x}) \ddot{\mathbf{u}}(\mathbf{x}, t) - \nabla \cdot \boldsymbol{\sigma}(\mathbf{x}, t) = \mathbf{f}(\mathbf{x}, t), \quad (1)$$

115 where ρ denotes density, \mathbf{u} is the displacement field ($\ddot{\mathbf{u}}$ being its second time derivative the acceleration field), $\boldsymbol{\sigma}$ the stress field and \mathbf{f} the forcing term. We use the SES3D wave propagation code (Fichtner and Igel, 2008; Gokhberg and Fichtner, 2016) and invert for a rheology that includes radial anisotropy for S-wave velocity (SH and SV). Anelasticity, kept fixed, is implemented using memory variables (Blanch et al., 1995; Fichtner and van Driel, 2014). The rheology relates stress $\boldsymbol{\sigma}$ to displacement \mathbf{u} .
There are therefore four inverted parameters: the seismic wavespeeds v_{SH} , v_{SV} , and v_{p} , and density ρ .

120 4.2 Misfit definition

In order to quantify the differences between observed and synthetic waveforms, we use the time-frequency phase misfit functional of Fichtner et al. (2008)

$$J_{\text{TF},p}(\mathbf{m}) := \int_t \int_\omega W_p^2(t, \omega) [\phi(\mathbf{m}, t, \omega) - \phi_{\text{obs.}}(t, \omega)]^2 dt d\omega, \\ W_p = \frac{\log(1 + |\tilde{u}_{\text{obs.}}|)}{\max(\log(1 + |\tilde{u}_{\text{obs.}}|))}, \quad (2)$$

based on the phase shift ($\phi - \phi_{\text{obs}}$) for a given time window between observed and synthetic data from their time-frequency
125 representations (calculated using the Gabor transform). A logarithmic time-frequency weighting function W_p determines the regions within that space that have sufficient amplitude such that meaningful measurements can be made, with \tilde{u} being the time-frequency representation of seismic signal u as calculated via the Gabor transform. Misfits for all windows, traces, and events are summed to produce the total misfit for a given model.

The advantage of this misfit definition is that it combines the sensitivity to phase shifts from, for instance, a cross-correlation
130 time shift misfit (Luo and Schuster, 1991; Dahlen et al., 2000) and to the shape of waveforms from an L_2 -norm misfit (e.g. Tarantola, 1984, 1986). It does not require the isolation of specific phases, and is therefore specifically suitable for interfering

phases. However, it is beneficial to isolate small- and large-amplitude signals in separate windows such that the information from small-amplitude signals is not suppressed by the weighting W_p (Section 4.6).

4.3 Optimisation algorithm

135 The objective functional in Equation 2 is minimised such that the synthetic seismograms for each consecutive model provide a better match with the observed data than the previous. We use a conjugate gradient scheme (Nocedal and Wright, 2006; Fletcher and Reeves, 1964) to compute model updates. This algorithm makes use of the gradient of the current iteration's misfit with respect to the model parameters and a recursive term based on the previous iteration's descent direction.

The misfit gradient is constructed from sensitivity kernels obtained using the adjoint method (e.g. Tarantola, 1988; Tromp
140 et al., 2005; Fichtner et al., 2006; Fichtner, 2010). The raw gradients for each model parameter are preprocessed before a descent direction is computed in order to improve convergence properties of the gradients. Kernels for each event are clipped at the 99th percentile in order to avoid too-strong localisation of updates especially in the source region, and then summed to produce the misfit gradient. The side and bottom edges are set to zero to remove potential boundary effects, and some smoothing is applied. This processing routine, **fully described in Supplementary Table 2**, is based on experience from previous
145 inversions and some initial experimentation. It is re-evaluated at several points during the inversion. The processed gradients are used to compute a descent direction using the conjugate gradient scheme, and the step length is then determined using a quadratic interpolation between the current model and three test models made with steps of lengths of 5%, 7% and 10% of the maximum gradient amplitude. The final model for an iteration is obtained from the computed descent direction and the step length thus obtained.

150 4.4 Choice of initial model

Because of the local nature of the gradient-based optimisation, the choice of initial model is of crucial importance: the closer the initial model is to the global minimiser, the more likely it is that it lies within the same “misfit valley”.

Fichtner et al. (2013b) constructed a model of the European crust and upper mantle (with an embedded higher resolution model of Anatolia (Fichtner et al., 2013a)). These models were constructed using waveform tomography and already include
155 considerable detail. The starting model for the current study is retrieved from these, by way of the initial stages of the Collaborative Seismic Earth Model (Afanasiev et al., 2015; Fichtner et al., 2018), which combines the local models with a smoother background of S20RTS anomalies (Ritsema et al., 1999). The transition between these is smooth, owing to the efforts of Afanasiev et al. (2015) to combine regional seismic tomography models into a coherent and consistent global model. This gives a starting model with considerable detail in the northern parts of the model domain (**resolution lengths of down to 25 km;**
160 **see also Figure 4 in Fichtner et al. (2013a)**), but only very smooth structures in the southern parts (Figure 2).

The initial crust was implemented in the form of a velocity gradient, meaning that the initial model has no sharp crust-mantle discontinuity. This approach is widely used in regional- to global-scale tomography (e.g. Fichtner and Igel, 2008; French and Romanowicz, 2014), and it mostly serves two purposes: (1) The absence of a discontinuity facilitates the construction of a finite-element mesh, and in particular, it avoids the presence of very small elements that would require a very small numerical

165 time step. (2) An initially smooth transition between crust and mantle allows the data to actually modify its sharpness, thereby avoiding artifacts that may result from an incorrect a priori implementation of the Mohorovičić discontinuity. Thus, in the final model, the velocity gradient from crust to mantle is as sharp as required by the data. These advantages are balanced by the disadvantage of somewhat limited interpretability of the final model in the sense that no sharp separation between crust and mantle exists.

170 4.5 Multi-scale approach

To further mitigate the risk of descending towards (insignificant) local minima, we use a multi-scale approach (Bunks et al., 1995). The lowest frequencies are inverted first, and as more of the data is explained by the model, higher frequencies are included in a stepwise manner. As a result of this approach, the large-scale structure within the model domain is obtained before small-scale details are filled in. This approach, a standard in waveform tomography (e.g. Akçelik et al., 2002; Tape et al., 2007; Virieux and Operto, 2009), mitigates the risk of cycle skips, spares computational resources and increases (at
175 long periods) the proportion of the model domain that the data are sensitive to. This means that some of the long-wavelength structure of the southern, less well covered part of the model domain, can also be retrieved.

The used frequency bands are specified in Table 1. Care is taken to avoid the introduction of cycle skips when new frequency content is introduced in the inversion. This is done by limiting the highest frequency to be less than 1.25 times the previous
180 highest frequency. In each frequency band, ~ 10 – 20 iterations are carried out.

At each frequency band, the events to be included are re-evaluated, mainly for the benefit of reducing computational cost (see Table 1). At low frequencies, events with few stations may provide valuable constraints on parts of the model domain that are otherwise poorly covered – several such events are located in North Africa (Figure 1). These events are mostly discarded at higher frequencies, where the benefit of including the event becomes unfavourable compared to the computational cost.

185 In addition to the smoothing of the kernels as described in Section 4.3, we found it was necessary to apply additional processing to the total model update at the end of the iterations in some of the frequency bands. This mainly involved additional smoothing and removal of edge effects. All additional smoothing and damping is described in Supplementary Table 2.

4.6 Waveform and window selection

For the initial three frequency bands (down to periods of 65 s), the first 1200 s of data after the event origin time were evaluated.
190 This is reduced in subsequent period bands, where the surface wave train becomes more compact (see Figure 3) and the computational cost per simulation increases (Table 1). Ideally, complete seismograms are used as data in the inversion. However, due to potential source- and receiver-side issues, geometry and noise, some selection of the data needs to be performed (Krischer et al., 2015). The initial window selection is carried out automatically using LASIF. For the first three frequency bands, windows are reviewed manually for all 50 000 seismograms; windows for later frequency bands are reviewed in part. During some
195 initial experimentation, it was found that the inclusion of late arrivals could contribute to the formation of boundary artefacts, especially if source or receiver are positioned close to the domain boundary. Such windows are therefore excluded.

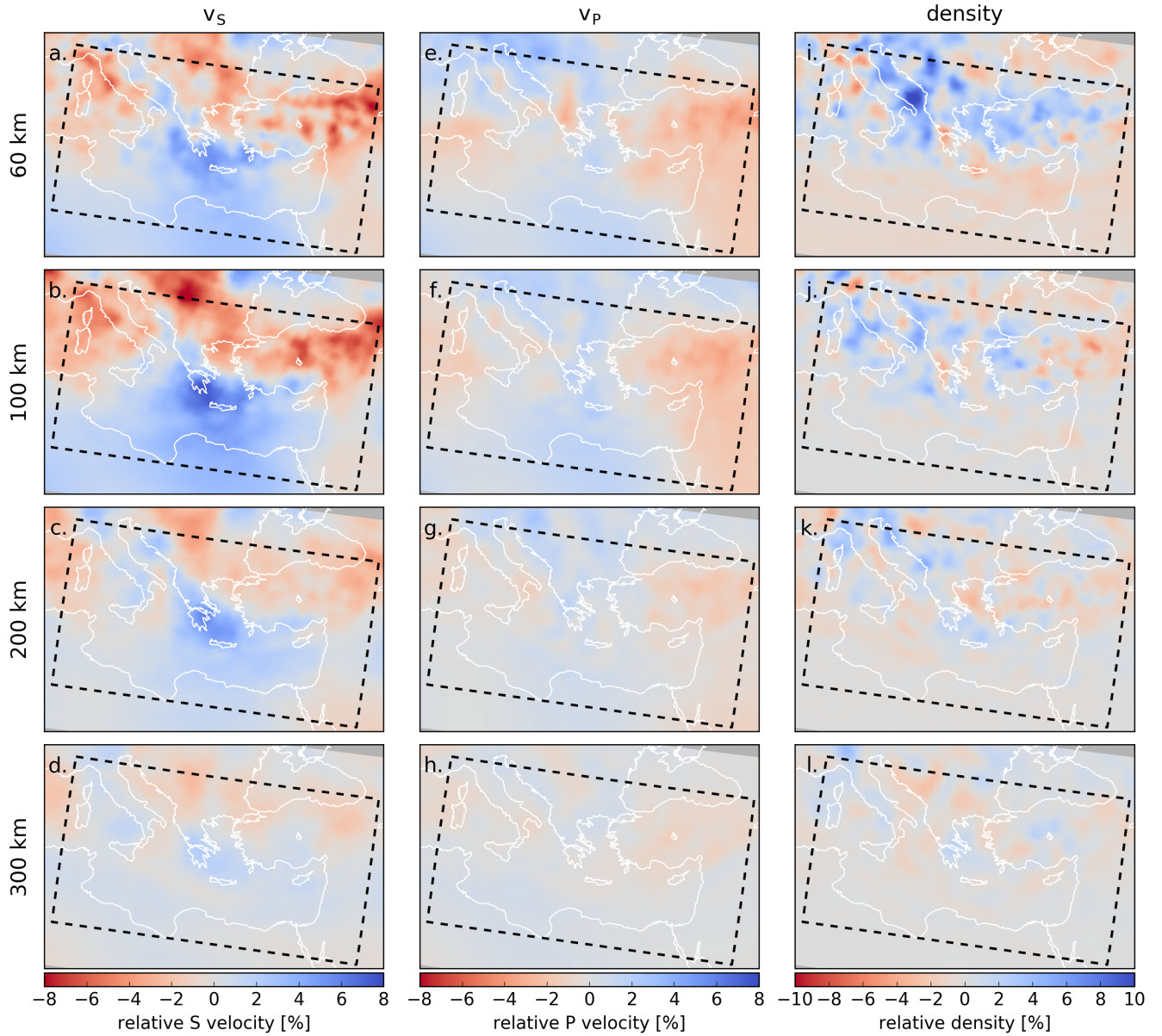


Figure 2. The starting model for (isotropic) S velocity, P velocity and density, as derived from Fichtner et al. (2013b, a). Slices are plotted at depths of 60, 100, 200 and 300 km, as relative deviations from the depth-averaged starting model. (a-d) isotropic S velocity v_s , computed as the Voigt average of the anisotropic velocities v_{SH} and v_{SV} ($v_s = \sqrt{\frac{1}{3}(v_{SH}^2 + 2v_{SV}^2)}$; e.g. Babuška and Cara, 1991), (e-h) P velocity v_p , (i-l) density ρ . Note the different colour scales.

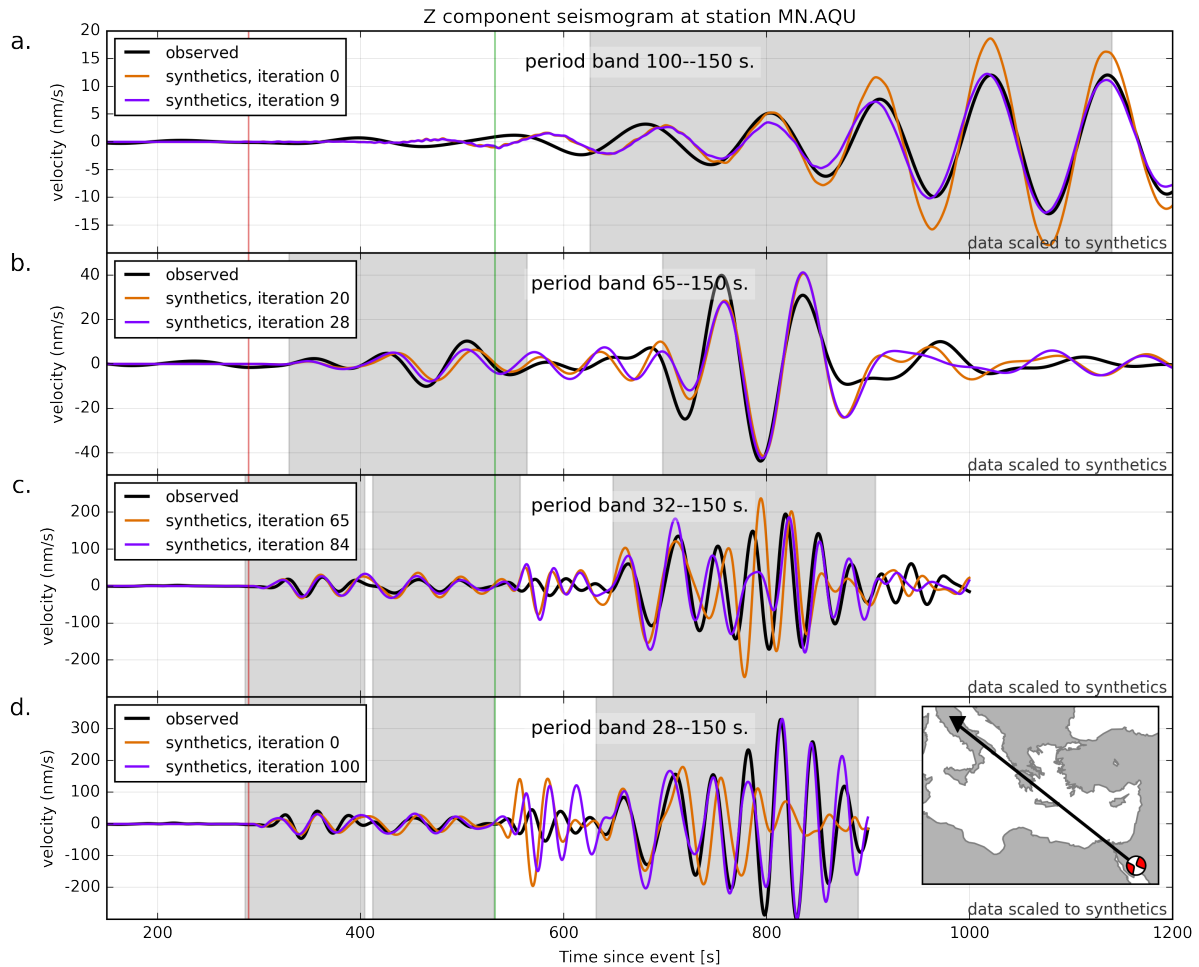


Figure 3. An illustration of the vertical-component seismogram recorded at MedNet station MN.AQU resulting from an earthquake in the Sinai region (27 June 2015, 15:34:03 UTC, $M_W=5.6$ – see inset) and corresponding synthetics for different period bands and iterations (see Table 1). Selected windows are shown as grey shaded areas. Vertical lines indicate P-wave (red) and S-wave (green) first arrival times predicted using TauP toolkit (Crotwell et al., 1999) in ObsPy (Beyreuther et al., 2010) for PREM (Dziewoński and Anderson, 1981). In the final period band (panel d), we compare the initial model 0 with the final model. The fit of the body wave data improves visibly, but especially the fit of the surface wave train improves dramatically – this observation is typical for the entire dataset.

#	Period range	Number of iterations	Simulated time	$n_x \cdot n_y \cdot n_z \cdot n_t$
0	100–150 s	10	1200 s	10.2×10^6
1	80–150 s	10	1200 s	24.4×10^6
2	65–150 s	10	1200 s	44.8×10^6
3	55–150 s	10	1001 s	60.2×10^6
4	46–150 s	10	990 s	89.1×10^6
5	38–150 s	15	990 s	167.3×10^6
6	32–150 s	20	1000 s	347.3×10^6
7	28–150 s	15	900 s	570.2×10^6

Table 1. Overview of inversion choices. Within each frequency band, ~ 10 -20 iterations are carried out, starting with the longest periods (Bunks et al., 1995). The column ‘Simulated time’ shows the duration of each synthetic earthquake simulation. As frequency increases, the surface wave train becomes more compact (see Figure 3), so the simulation duration can be shortened. The final column $n_x \cdot n_y \cdot n_z \cdot n_t$ shows the product of the discretisation in the three spatial directions (number of elements) and time (number of time steps), which serves as an indication of the computational cost of a single forward simulation.

Our window selection strategy is aimed to maximise sensitivity to deep structure. This is done by explicitly separating small- and large-amplitude signals into different windows, which allows us to make use of the (smaller amplitude) body wave information. Figure 4 illustrates this. Two separate windows A and B reveal significant and complementary information in both wave packets, which is demonstrated by the deep sensitivity for v_p for body wave window A. In the combined window A+B, both the misfit and the v_p sensitivity kernel are dominated by the large-amplitude surface-wave signal, which is not significantly different from window B. Separating such windows accelerates the convergence of the body wave data and thus, given the finite total number iterations, allows us to better resolve deeper structure.

5 Results

A total of 100 conjugate-gradient model updates were calculated, divided over eight consecutive frequency bands going down to periods of 28 s (Table 1). In this section, we will discuss the resulting models and misfit development.

5.1 Misfit development

Figure 5 displays the misfit development for all the frequency bands used in this study. The misfit reduction varies per frequency band but is on the order of 10–20% within each band.

Comparing the initial and final model in the period band of 28–150 s, the misfit drops by 48%. This is demonstrated in Figures 6 and 7, where we compare observed traces for this period band with synthetics from the initial and final model using windows from the final iteration. Figure 6 demonstrates that the most important misfit improvements come from events clustering in the central Aegean part of the model domain, and towards the south-east. The events with the largest initial misfit

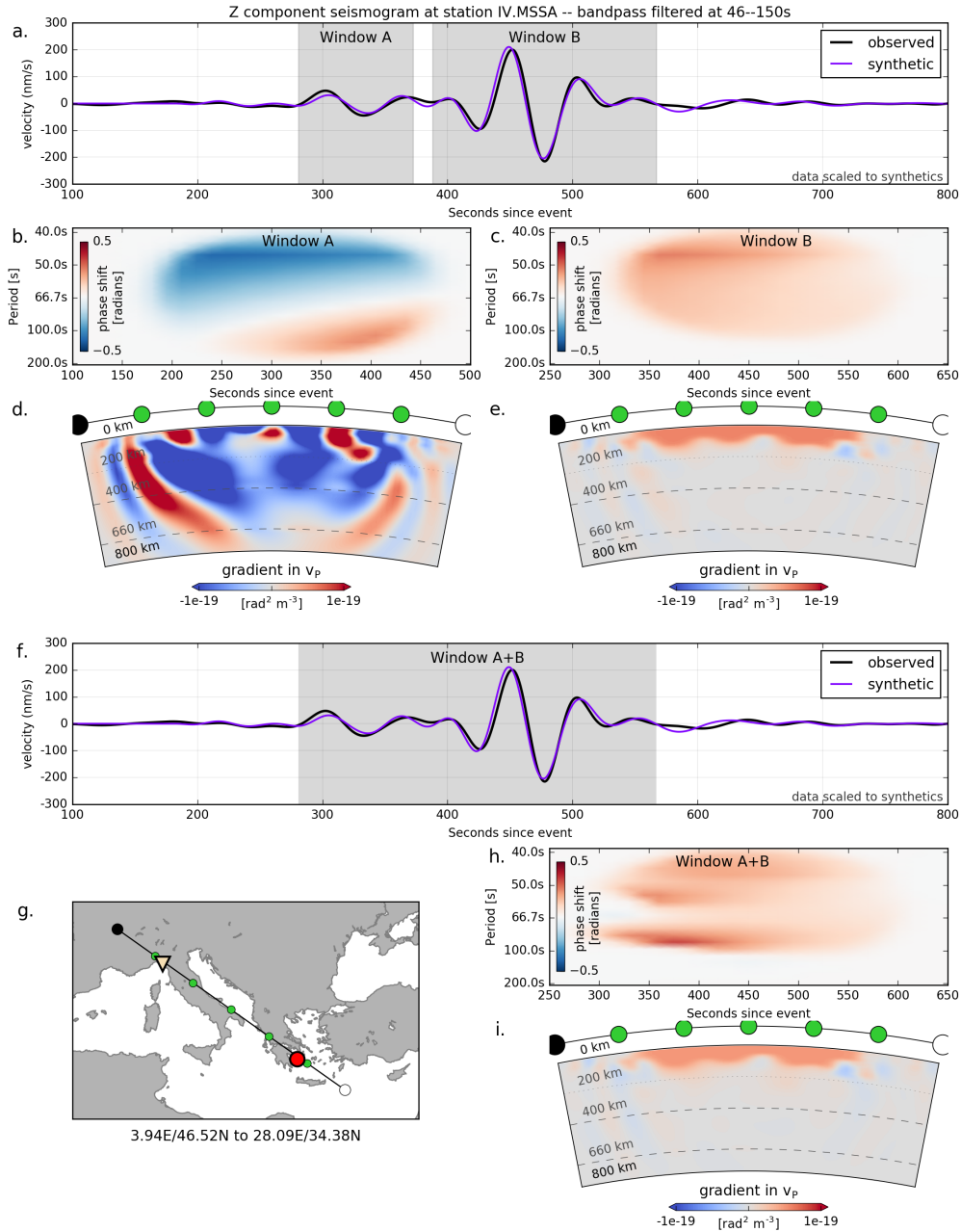


Figure 4. An illustration of the difference between selecting multiple windows or a single window in the presence of both small-amplitude and large-amplitude signals. (a) Observed and synthetic seismograms from an earthquake in the Aegean (4 April 2014, 20:08:08 UTC, $M_W=5.6$), band-pass filtered between periods of 46 and 150 s, with two separate windows A and B. (b) Weighted time-frequency phase difference $W_p(\phi - \phi_{\text{obs.}})$ (Equation 2) between observed and synthetic seismograms for window A. (d) A cross-section through the corresponding sensitivity kernel for v_p . (c,e) Phase difference and kernel for window B. **Note that both kernels are on the same colour scale. Because window B is a surface wave window, it is to be expected that sensitivity to P velocity is much reduced.** (f) The same traces as in (a), but now with a single combined window A+B. (g) Map showing the location of the cross-section, with the locations of the earthquake and station indicated by a red circle and yellow triangle, respectively. (h,i) Phase difference and kernel for the combined window A+B. Note the similarity to the corresponding plots for window B (c,e) – a result of the weighting W_p that suppresses the effect of the small-amplitude signal.

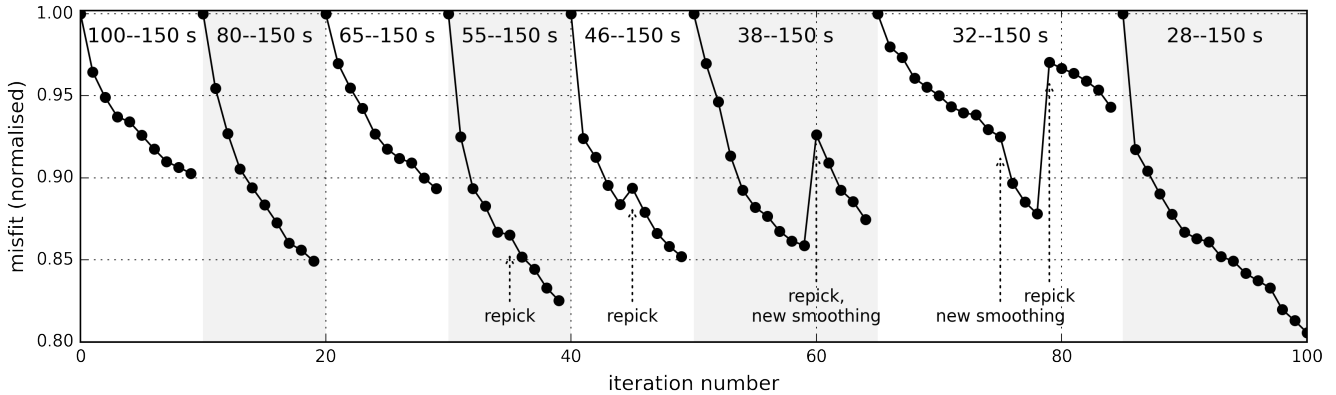


Figure 5. Misfit development across iterations, normalised by the initial misfit within each frequency band. Within every frequency band, 10–20 conjugate-gradient updates are calculated (Table 1). In the period bands of 55–150 s and higher, windows were re-evaluated mid-period band, indicated with the label ‘repick’. The increase in misfit at these points is a result of the fact that the objective functional is changed as additional windows are included – a result of the fact that the waveforms grow more similar. In some cases, the smoothing parameters (Section 4.3) are also changed mid-period band. This is done when the misfit development starts flattening out.

(which are the events with the largest number of windows) display the largest drop in misfit – both in absolute and in relative terms. Phase shifts per window become closer to zero for the final model.

Figure 7 shows examples of seismogram fits for an event in the Aegean sea. Especially at stations farther away from the source (e.g. stations 1 and 9), the difference between the synthetic seismograms for the initial and final models is striking.

5.2 Model

After 100 iterations, the model has been updated considerably for all parameters down to the transition zone (Figure 8). Updates are strongest near the surface, and decrease in strength with depth. P-velocity is updated significantly less strongly than the other parameters, and to shallower depths (Figure 8a). Average shear velocities do not change significantly from the starting model (Figure 8b), with average v_{SH} slightly higher than v_{SV} in the uppermost 100 km. Figure 9 shows how the Hellenic subduction zone becomes progressively more pronounced as iterations progress.

The final model is shown in Figure 10 (compare to the starting model in Figure 2). In general, the S velocity model has features that can be linked most coherently with our knowledge of the geological situation. In the upper ~ 100 km, the continental areas have slow velocities while the old oceanic lithosphere of the Central/Eastern Mediterranean is fast. In contrast to this, both the Western Mediterranean and the Aegean sea display low velocities, as expected from their history of young oceanic crust formation and recent or ongoing extension. Several high-velocity zones can be linked to areas of known current or previous subduction. These will be discussed in more detail below.

The picture is not so clear for P velocity and density. P velocity has generally increased in the upper ~ 200 km of the model domain, with smaller amplitudes than in S velocity. Because for a given frequency, wavelengths are longer for P waves, the

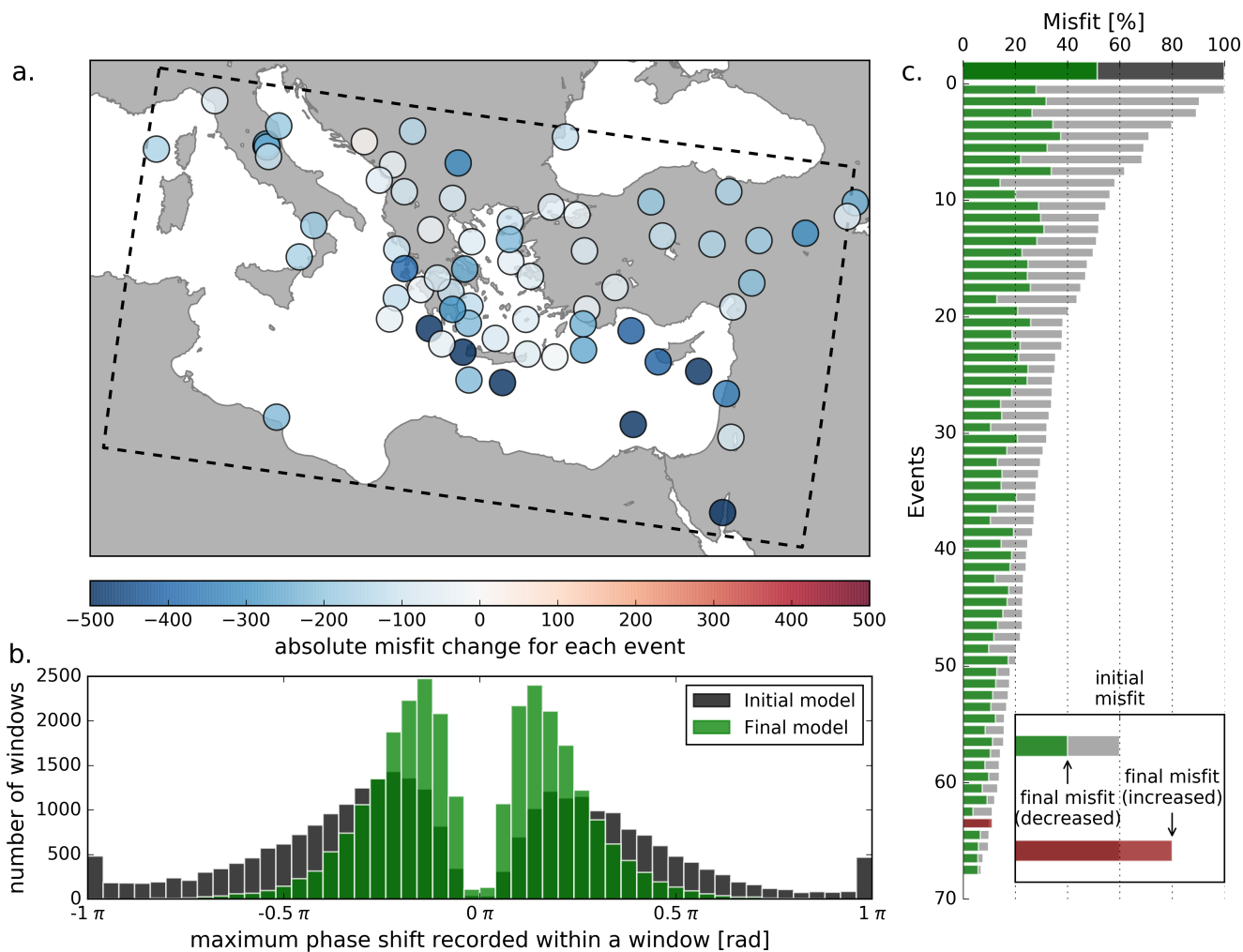


Figure 6. A comparison of the initial and final models in the shortest period band (28–150 s). (a) Geographical distribution of the absolute change in misfit for each of the events from the initial to the final model. (b) A comparison of maximum time-frequency phase shift between observed and synthetic seismograms within windows, for the initial (black) and final (green) models. A positive phase shift means that synthetics are ahead of observed data, a negative phase shift the other way around. (c) Misfit for the initial (grey) and final (green/red) model, plotted both for the whole dataset (thick bar) and per event (narrow bars). Event values are scaled by the largest initial misfit and sorted by initial misfit. Total misfit decrease in this period band is 48%. The strongest misfit decrease is generally seen for the events with the largest initial misfit.

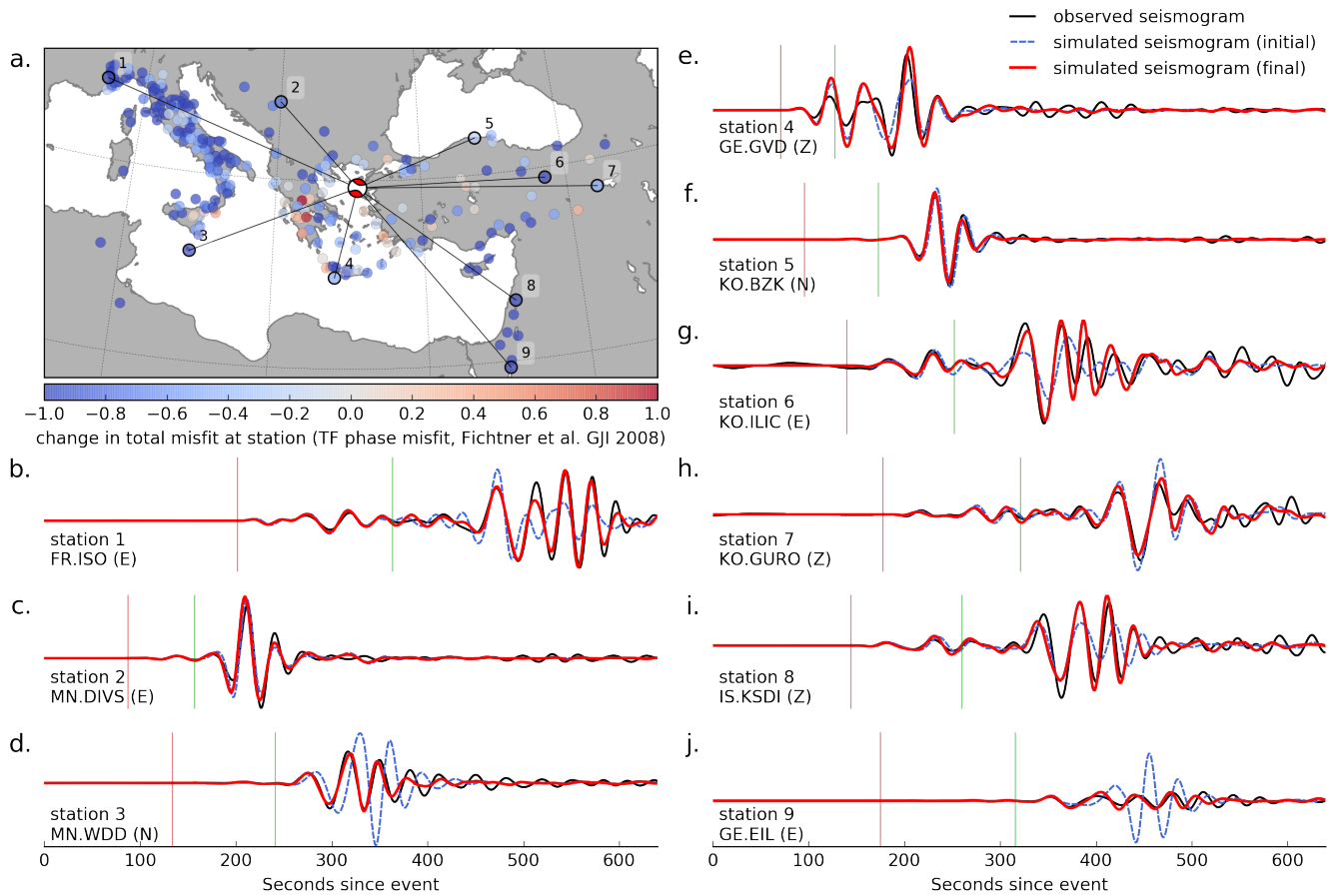


Figure 7. Misfit change for a single event, and example seismograms. (a) change in misfit for all stations of an event in the Aegean Sea (8 January 2013, 14:16:11 UTC, $M_W=5.8$), evaluated in period band 7 (28–150 s) (Table 1). Each dot represents the total change in misfit for a station. (b-j) examples comparing observed (black) and synthetic seismograms for the indicated stations (initial model: dashed, pink; final model: red). Vertical lines indicate P-wave (red) and S-wave (green) arrival times predicted for PREM (Dziewoński and Anderson, 1981) using TauP toolkit (Crotwell et al., 1999) in ObsPy (Beyreuther et al., 2010).

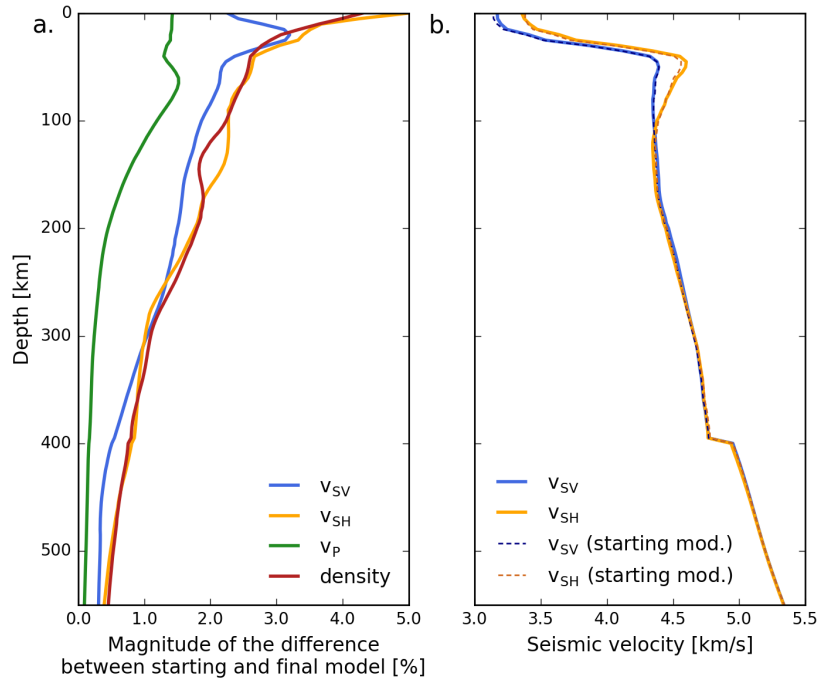


Figure 8. a. Depth average of the magnitude of the relative difference between initial and final model for all model parameters individually: $\text{mean}(|(\mathbf{m}_f - \mathbf{m}_i)/\mathbf{m}_i|)$. b. The depth-averaged horizontal and vertical shear wave velocities for the initial and final models.

resulting model is smoother than the S velocity model. The Hellenic subduction zone is visible down to ~ 250 km. In the density model, the opposite effect is visible: because it is mainly contrasts in density to which the waves are sensitive, the updated structures are of generally shorter wavelength. As a result, the imaged structures are of stronger amplitude and tend to be more oscillatory. Although this reaches greater depths (even beyond the transition zone), the results are much less coherent. We will discuss this separately below.

5.2.1 High-velocity structures

Several distinct high-velocity structures are visible within the model. A 3-D rendering of these structures is shown in Figure 11, visualised with the 4.75 km/s velocity isosurface. This value is chosen because it is somewhat above the upper-mantle average, and serves to emphasise the approximate outline of the high-velocity features. Cross-sections are shown in Figures 12 and 13.

Beneath Italy, a high-velocity body (labelled ‘A’ in Figure 11) stretches along most of the Italian peninsula underneath the Apennines towards Puglia and Sicily, visible between depths of ~ 200 –500 km (Figure 12a,b). This structure, mostly clearly separated from the surface, is imaged in many other studies and is sometimes interpreted as the remains of Tethyan subduction or as delamination from the Italian peninsula (e.g. Piromallo and Morelli, 2003; Koulakov et al., 2015).

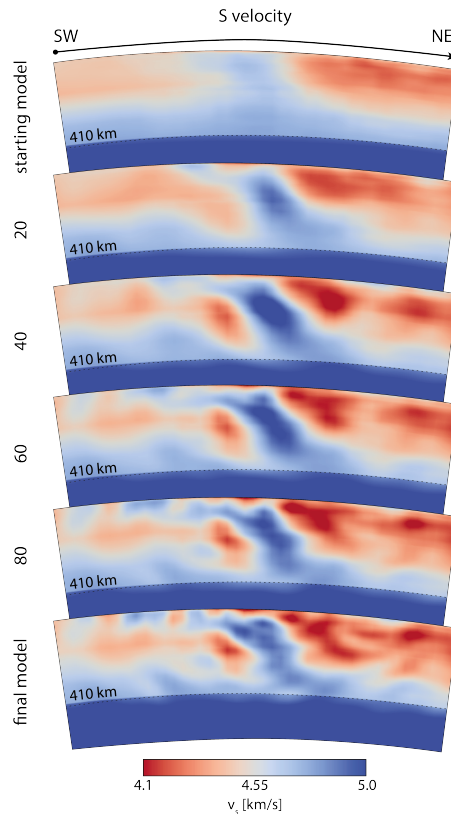


Figure 9. Development of the S velocity model across iterations, in a southwest-to-northeast section that is perpendicular to the Hellenic subduction zone (see Figure 1a). Plotted is the absolute isotropic S velocity v_s . The starting model (Figure 2) is derived from Fichtner et al. (2013b). The section corresponds to the Hellenic section in Figure 13d (dark green).

245 On the other side of the Adriatic sea, a high-velocity anomaly (labelled ‘B’ in Figure 11) stretches from the southern Dinarides south towards northern Greece. It is especially prominent underneath the Southern Dinarides (Figure 12b) but stretches along most of the Adriatic coast (Figure 12c). In the north, an anomaly is only visible near the surface underneath the Adriatic sea (Figure 12a). This Dinaric anomaly is imaged in other studies (e.g. Piromallo and Morelli, 2003; Amaru, 2007) and correlates with the location of geodetically inferred convergence and subduction of Adria beneath Eurasia (e.g. Bennett et al.,
 250 2008).

The most prominent and strongest high-velocity structure sits beneath the Hellenic Arc and Aegean Sea (labelled ‘C’ in Figure 11), and has been widely interpreted as the African plate subducting beneath Eurasia. At the surface, it follows the curvature of the Hellenic Arc from the Peloppones towards Crete. The anomaly dips downward and inward in a north-easterly direction down to the top of the mantle transition zone (Figure 13d,e). This structure has been imaged to various depths from
 255 the early days of seismic tomography and is generally believed to continue deep into the lower mantle (e.g. Spakman et al.,

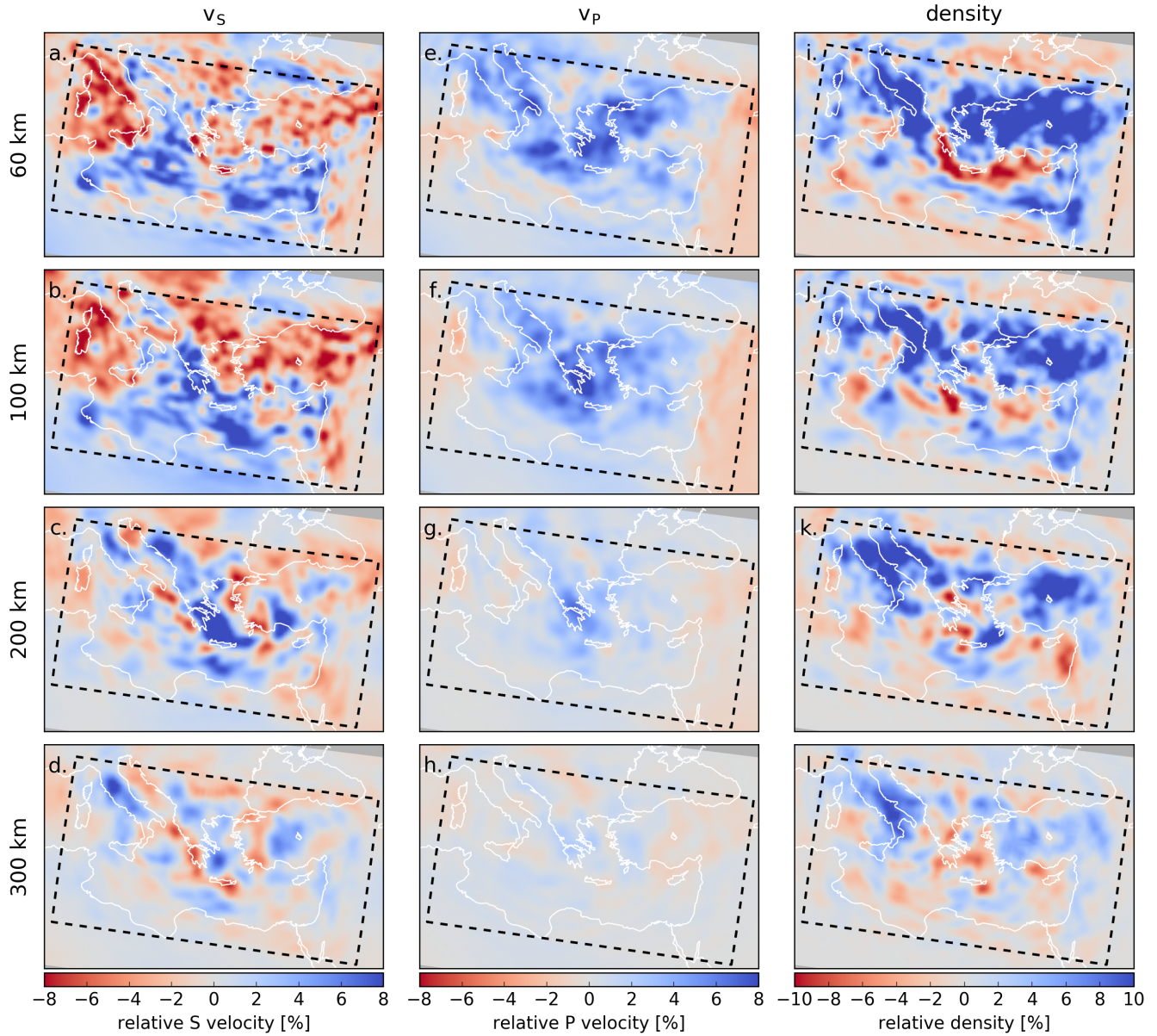


Figure 10. The final model for isotropic S velocity, P velocity and density – compare to Figure 2. Slices are plotted at depths of 60, 100, 200 and 300 km, as relative deviations from the depth-averaged starting model. (a-d) isotropic S velocity v_s , (e-h) P velocity v_p , (i-l) density. Note the different colour scales, where especially the amplitudes of variation in P velocity are much lower. **Additional depth slices can be found in the Supplementary Material.**

1988; Piromallo and Morelli, 1997; Amaru, 2007; Biryol et al., 2011; Portner et al., 2018; Hosseini, 2016). In our model, the fast anomaly flattens out towards the 410 km discontinuity and is not imaged in deeper parts (Figure 13d,e). **This is likely a result of a lack of sensitivity to depths beneath the mantle transition zone, and should not be interpreted as an indication that the slab does not extend into the lower mantle.**

260 Beneath western/central Anatolia, another high-velocity anomaly of large amplitude (labelled ‘D’) is visible, dipping northward from the Gulf of Antalya towards the transition zone (Figures 13f,g). It is imaged in various other studies (e.g. Amaru, 2007; Biryol et al., 2011; Portner et al., 2018) and is interpreted as the deeper part of the Cyprean slab. In previous studies, the shallow part of this slab was imaged as near-horizontal, stretching northward from the Cyprus trench (e.g. Bakırcı et al., 2012). At the surface, this part is thought by some to be separated from the Hellenic slab via the Pliny-Strabo STEP fault (Govers and
265 Wortel, 2005; Özbakır et al., 2013), whereas others surmise the Pliny and Strabo faults to be part of a general African-Eurasian convergence system (Howell et al., 2017). In our images, this shallow part is imaged intermittently and a clear gap is visible between the shallow and deep parts of the slab, which extends into the transition zone (Figure 13f,g).

A fifth anomaly, labelled ‘E’, is visible south of the Hellenic Arc in Figure 11. We will not interpret this further due to the poor data coverage in this area, mostly derived from a single earthquake.

270 **In the Supplementary Material, we further compare this model with model UU-P07 (Amaru, 2007).**

6 Discussion

6.1 Advantages and limitations of the method and model

Although computationally more expensive than ray-based tomography methods, the advantage of waveform tomography lies in its ability to make use of all and any part of seismograms that has a sufficient signal-to-noise ratio, allowing for a more complete
275 extraction of all information that is carried by seismic waves. This allows us to take into account body and multimode surface waves, source effects, and frequency-dependence, and jointly invert for multiple parameters for the crust and upper mantle. This is done in a manner where the misfit is computed directly from the observed and simulated seismograms, thus providing a self-consistent inversion framework. This method is particularly powerful in tectonically active parts of the Earth such as the Mediterranean, where strong heterogeneity is unavoidably present – circumstances under which the assumptions underlying
280 ray theory become invalid.

Nevertheless, it is important to understand that the results are unavoidably affected by observational and methodological errors. In the following paragraphs we will discuss some of these issues.

Moment tensors used in this inversion are taken from the Global Centroid Moment Tensor catalog (Ekström et al., 2012) using the point source approximation. These are not inverted for separately, as limited azimuthal coverage – in particular near
285 the model domain boundaries – may lead to a bias in the results, as well as potential overfitting. Valentine and Woodhouse (2010) note that the model used for source inversions can have an imprint on tomographic results. Particularly in areas of limited coverage errors in the description of the source can have a large effect – this may be the case for Anomaly E in Figure 11. In order to minimise such effects, patterns in phase shift for each event are monitored manually and in some cases, source

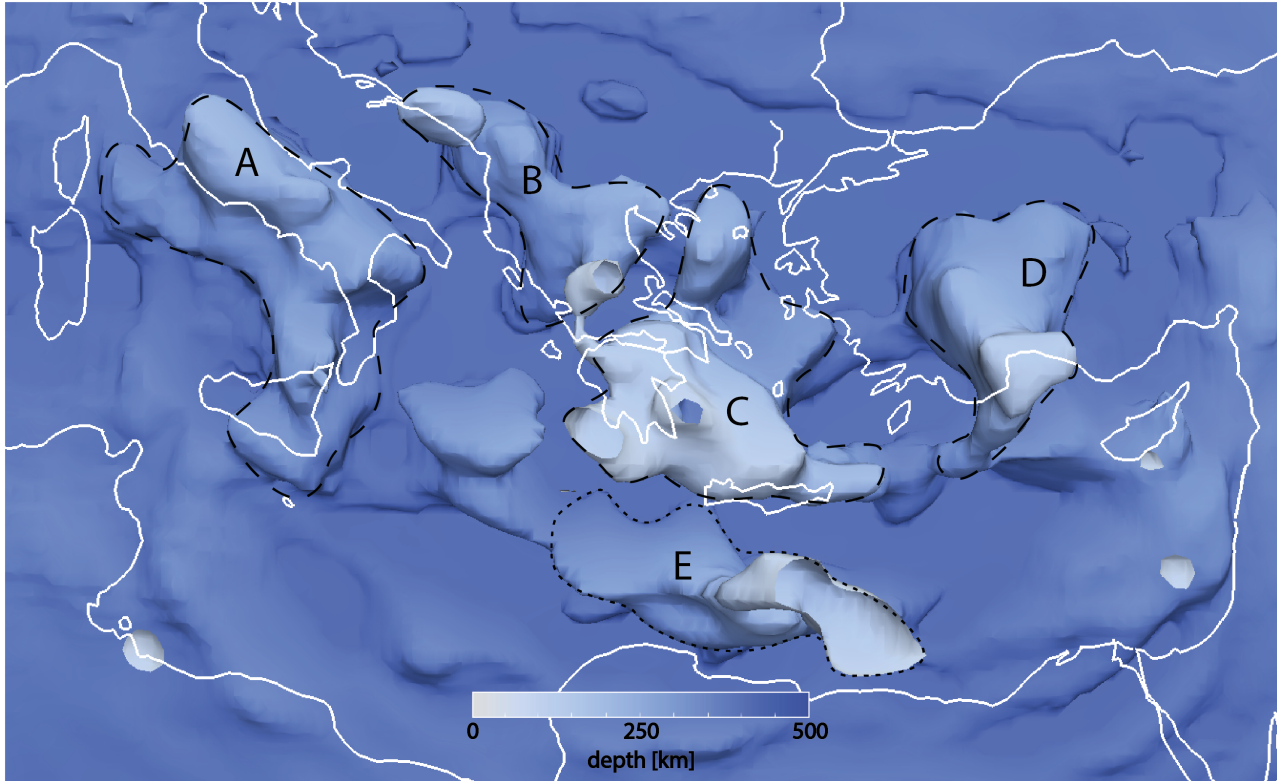


Figure 11. A 3-D rendering of high-velocity structures within the model domain. For this figure, the 4.75 km/s isosurface of isotropic S velocity v_s was selected. This value is chosen because it is somewhat above the upper-mantle average, and serves to emphasise the approximate outline of the high-velocity features. The model is coloured by depth, with shallower regions whiter and deeper regions bluer. The high velocities are labeled with letters: A: Italy/Appenines; B: Dinarides, C: Hellenic, D: Anatolia. E is possibly an artefact. A 3-D visualisation video is available through the Supplementary material, as well as the vtk file for this figure – this can be viewed using e.g. ParaView (Ahrens et al., 2005).

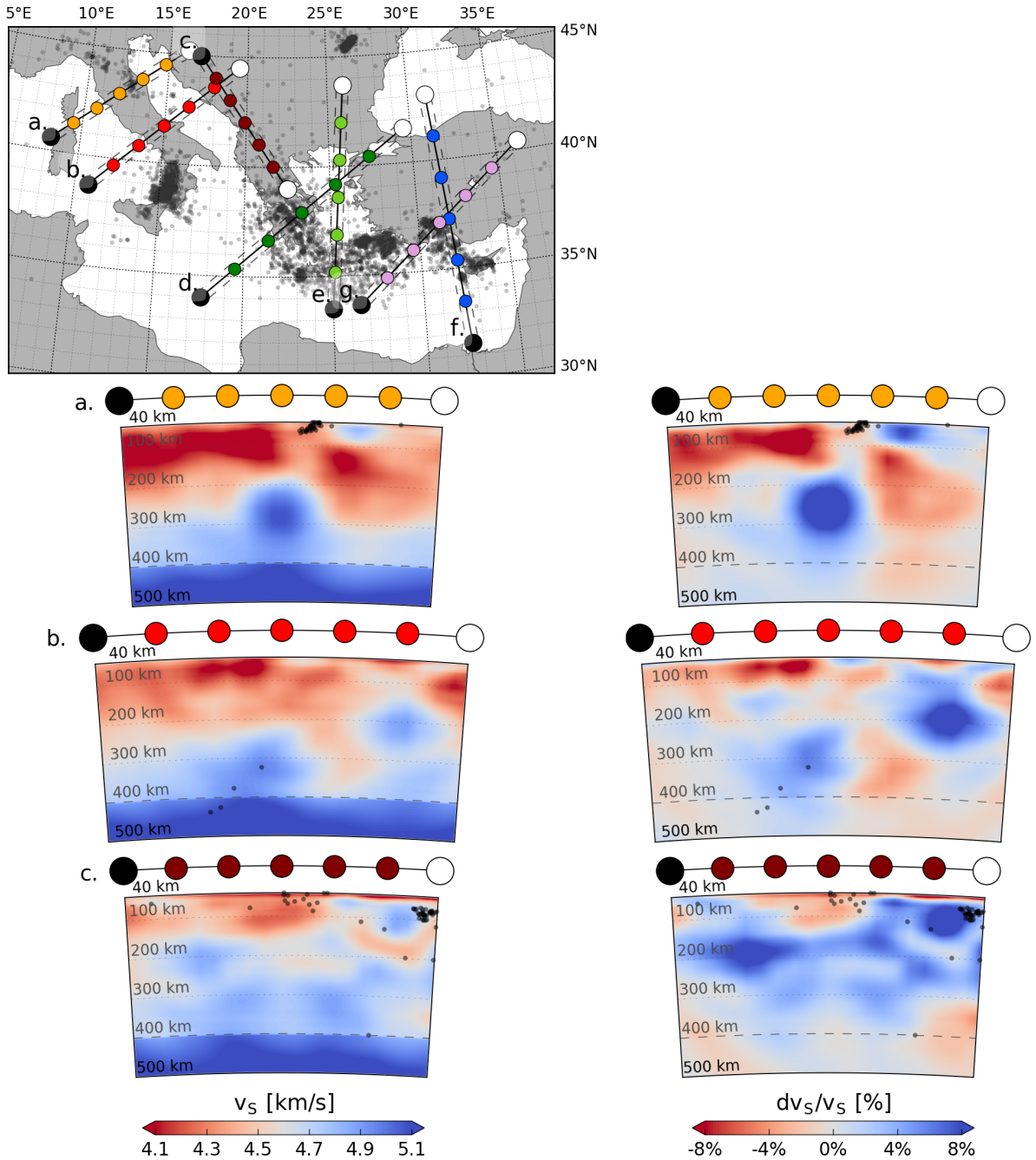


Figure 12. Cross-sections through the S velocity model and a map showing their locations. Left column: isotropic S velocity v_s , right column: relative deviations in v_s from the depth-averaged starting model. Black dots indicate seismicity in the region, as obtained from the EMSC-CSEM catalogue (2004–August 2019, depths greater than 40 km and $M > 2$; Godey et al., 2013). Seismicity on the cross-sections is plotted if it is within 50 km from the cross-section slice. (top) Map showing the locations of the cross-sections. (a) Cross-section across Northern Italy (anomaly A) (b) Cross-section across Italy and the Dinarides (anomalies A & B) (c) Cross-section parallel to the Dinaric anomaly (anomaly B)

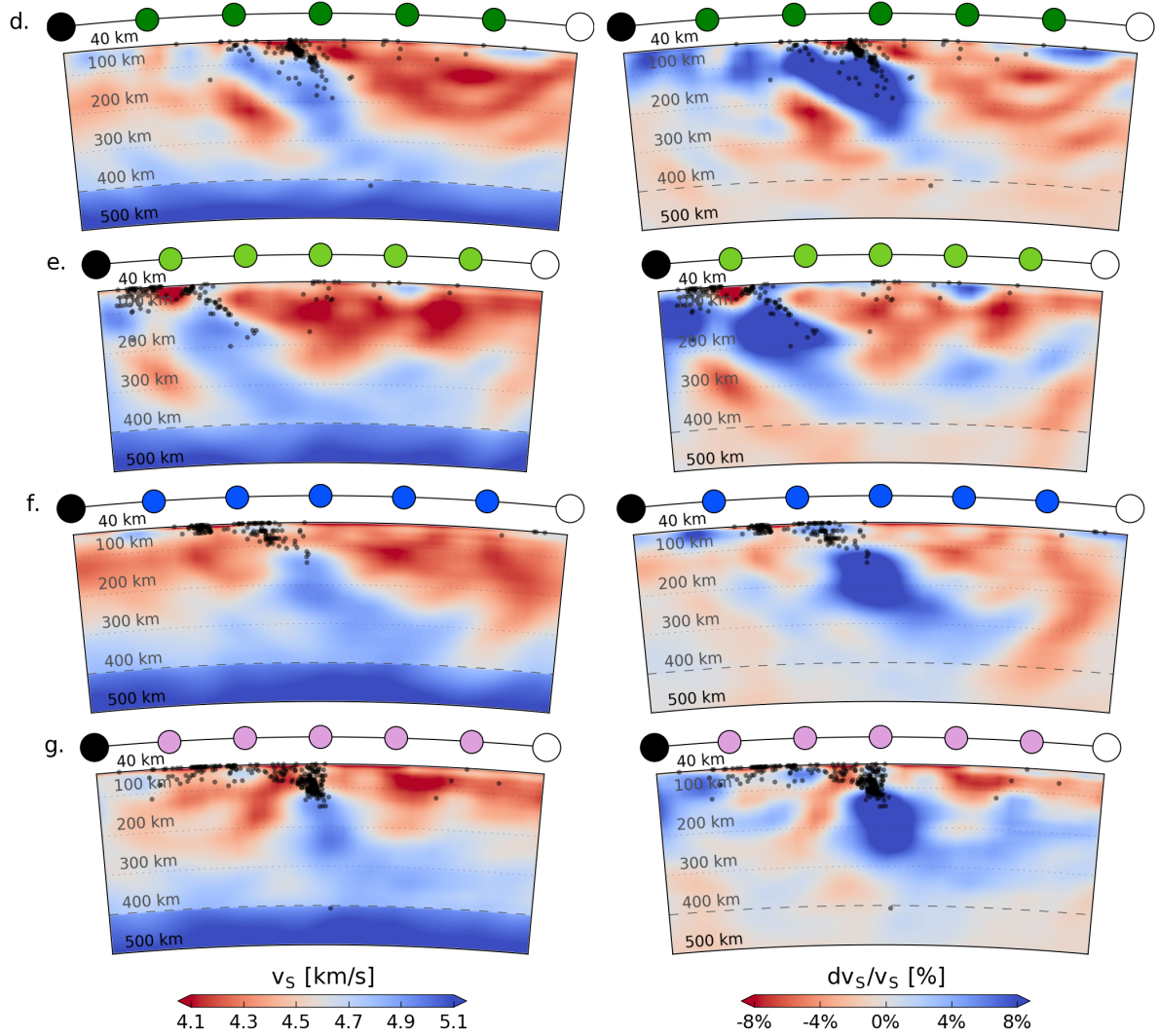


Figure 13. Continuation of cross-sections from Figure 12 (d) Cross-section across the Hellenic subduction zone (anomaly C) (e) Alternate orientation cross-section of the Hellenic subduction zone (anomaly C) (f) Cross-section across the Anatolian subduction zone (anomaly D). (g) Alternate cross-section across the Anatolian subduction zone.

parameters were adjusted accordingly. In line with results from Bozdağ et al. (2016) and Hjörleifsdóttir and Ekström (2010),
 290 these adjustments are generally on the order of a few s or km, and they correspond more closely to the reported ISC-EHB
 locations (Engdahl et al., 1998; Weston et al., 2018) as well as results reported in regional tectonic studies such as Howell
 et al. (2017). Examples are shown in Section 2 of the Supplementary material. In a few cases, events were removed from the
 inversion altogether, as their waveforms showed a notable jump in complexity in the higher frequency bands which may point
 to issues with the point source assumption or the source time function.

295 The wave propagation simulations are carried out on a regular mesh: a spherical chunk that includes no ellipticity, topog-
 raphy, ocean layer, or explicitly meshed internal discontinuities. The neglect of topography can lead to small-scale artefacts
 near the surface, in particular if the topography is on the same length scale as the minimum wavelength (Nuber et al., 2016).
 Similarly, internal discontinuities and the effect of the water layer are not modelled explicitly. Especially near the surface, the
 model thus has to be interpreted as an effective representation of the real Earth, valid for the frequencies used in the inversion
 300 (Capdeville et al., 2010). Sharp or small-scale layering and (apparent) anisotropy thus cannot be distinguished reliably.

Another source of error are the actual data used in the inversion. Such errors can pertain to the location, orientation and
 timing of the receivers, as well as instrument errors and errors in the reported response. Many of these issues are caught using
 the automated quality control carried out in our workflow, but subtle errors remain difficult to catch. In areas of dense data
 coverage, this will average out, but in the regions of poor coverage, these may still affect the inverted result.

305 6.2 Fit to data not used in the inversion

Within the framework of the inversion and issues as outlined above, it is possible to analyse the trustworthiness (and limitations)
 of the model.

For this, we compute the misfit for the initial and final models for six earthquakes that were not part of the inversion
 (Supplementary Table 1). We compare complete traces where no window selection has taken place in order to avoid preferential
 310 usage of data that ‘work well’. For this reason, and following Tape et al. (2010) and Simutè et al. (2016), we use for this a
 normalised L_2 waveform difference misfit:

$$J_{L_2} = \frac{\int_t [\mathbf{u}(\mathbf{m}, t) - \mathbf{u}_{\text{obs.}}(t)]^2 dt}{\sqrt{\int_t [\mathbf{u}(\mathbf{m}, t)]^2 dt \int_t [\mathbf{u}_{\text{obs.}}(t)]^2 dt}}. \quad (3)$$

Figure 14 shows the change in misfit for these events for all stations as well as example seismograms from events A–E
 (Supplementary Table 1). The data fit improves both visually and quantitatively in the large majority of traces.

315 6.3 Spike tests

In addition, we assess our model with what can be viewed as a “waveform tomography equivalent” for spike testing. While
 more sophisticated methods, such as resolution analysis through random probing (Fichtner and van Leeuwen, 2015), do exist,
 spike tests do not rely on any assumptions about the shape of point spread functions which – especially in the case of density
 – may be strongly non-Gaussian. They thus give qualitative insight into smearing in a way that is visually easy to interpret.

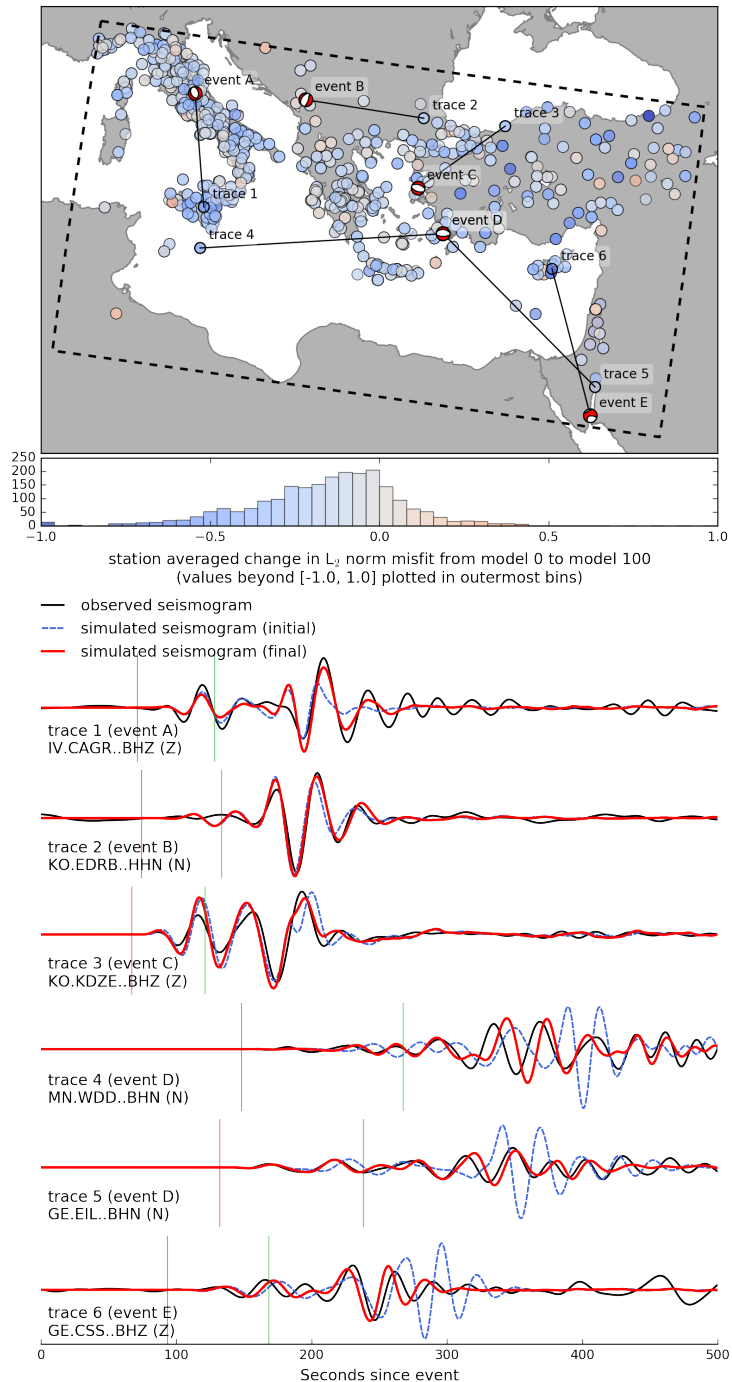


Figure 14. L_2 norm misfit decrease for new events and example traces. Top: Map with for each station a dot representing the station-averaged change in L_2 norm misfit for whole traces for all new events, and histogram with the same data. Misfit decreases for 79% of the data. Total L_2 norm misfit decreases by 9%, compared to 13% for the original data set. Bottom: Example seismograms showing observed data (black) compared with synthetics for the initial (dashed, pink) and final (red) models for the indicated source-receiver pairs.

320 As Rawlinson and Spakman (2016) note, it is important in ray-theory travelttime tomography to use the raypaths of the actual model to assess recovery, smearing and trade-offs. To mimic this using the full wavefields computed from 3-D wave propagation, we add a grid of Gaussian anomalies onto one parameter in model 91 and use the real data to run five additional iterations in the final period band of 28–150 s. If the model is robust, the data will detect the (presumably) erroneous spikes, and updates will be generated that remove the anomalies. We do this for each parameter (v_{sv} , v_{sh} , v_p and density) individually, 325 thereby also checking trade-offs. Spikes are introduced in an alternating chequered pattern at different depth levels.

In Figure 15, we compare, at a depth of 100 km, the input anomaly (top row) with the part of the model update that is a result of the addition of the spikes (bottom four rows). This is computed by subtracting the reference model update (without spikes) from the update after five iterations of the spiked model: $\mathbf{u}_{\text{spike}} = (\mathbf{m}_{s+5} - \mathbf{m}_s) - (\mathbf{m}_{96} - \mathbf{m}_{91})$.

330 Comparing Figure 15 to Figure 1, we immediately observe that those parts of the model domain that are well-covered are indeed also the parts in which the spikes are most successfully removed. This is most visible for the first two rows, with spikes in v_{sh} and v_{sv} , respectively. These are also the parameters that are recovered best, with trade-offs to other parameters that are less significant. Recovery of v_p is, in general, very limited. Trade-offs from v_p to other parameters are partially stronger than the updates in v_p itself. This is in line with our observations of the final model (Section 5.2 and Figure 10).

335 Recovery of density is also limited. Only in the central Aegean recovery is of a level approaching that of v_{sv} and v_{sh} , and the negative spikes are surrounded by a positive “halo”. Furthermore, when comparing the different rows, we see that trade-offs to density from the other parameters are larger than the updates in density itself. While this is a test done over only a few iterations and it is possible that these trade-offs even out more as iterations progress, this does indicate that density is not a stable parameter.

6.4 Perspectives on full-waveform inversion for density

340 **The limited recovery of 3-D density structure is interesting in the context of previous numerical experiments, showing that density has a clear imprint on the seismic wavefield and may in principle be constrained (Płonka et al., 2016; Blom et al., 2017), especially at longer periods (Takeuchi and Saito, 1972). Furthermore, recent work in seismic exploration (e.g. Prioux et al., 2013; Operto and Miniussi, 2018; Pan et al., 2018) and regional seismology (e.g. Beller et al., 2017) has been encouraging.**

345 The fact that density cannot be constrained reliably in the present study can be attributed to two main factors. Firstly, as density affects the seismic wavefield mainly through reflection/back-scattering, it is predominantly *contrasts* in density that are imaged. This results in a sensitivity to density at much shorter length-scales than for S velocity. It is therefore likely that short-scale structure from other parameters is mapped into density – this is especially likely near sharp transitions such as the surface and the Mohorovičić discontinuity, and may be exacerbated by the lack of topography/bathymetry and the ocean layer in our mesh. **In the context of exploration seismology, indirect sensitivity to density through impedance contrasts can be** 350 **exploited much more effectively through the use of reflected waves.**

Furthermore, variations in density have a smaller effect on the seismic wavefield than variations in seismic velocity (Blom et al., 2017). This means that in the presence of noise, inaccuracies in the modelling method as discussed above, or variations in parameters not included explicitly in the inversion (e.g. attenuation or further anisotropy), density is likely to act as an

“inversion garbage bin” (e.g. [Operto and Miniussi, 2018](#); [Pan et al., 2018](#)). For this reason, we presently do not further interpret
355 density, although it is still important to include this parameter in the inversion.

The way ahead in waveform inversion for density structure may require significantly more effort than we, admittedly, antic-
ipated at the beginning of this study. Other physical parameters that are at a similar level of importance as density will need
to be included in order to avoid that the neglect of one parameter pollutes the image of another. Likely candidates for such
parameters are attenuation and more complex forms of anisotropy. An even larger number of model parameters will unavoid-
ably decrease resolution of individual parameters and increase the influence of subjective regularisation, e.g., damping and
360 smoothing. This subjective imprint can only be avoided by adopting a probabilistic approach to waveform inversion that only
incorporates prior knowledge that we actually do have. The result would be a posterior distribution that reflects our honest
state of knowledge on 3-D density in the Earth. Thanks to increasing computational resources and methodological advances,
probabilistic full-waveform based on Monte Carlo sampling is starting to be within reach (e.g. [Biswas and Sen, 2017](#); [Gebraad
et al., 2020](#)).
365

7 Conclusions

We have imaged the upper mantle beneath the Central and Eastern Mediterranean using waveform tomography, simultaneously
inverting for radially anisotropic S velocity, P velocity and density. We particularly aimed to resolve deep structure, by using an
approach that combines the use of long period data at the beginning of the inversion with a windowing technique that optimally
370 makes use of the separation of small-amplitude body waves from large-amplitude surface waves. This has resulted in a model
in which several high-velocity structures are imaged down to the transition zone, which can be correlated to the current and
past tectonic setting. This model is able to explain new data not used in the inversion.

Due to the natural dominance of surface wave signals in waveform tomography, our model is best constrained for S velocity,
and we therefore base our interpretations on this parameter. P-wave velocity structure is less well recovered and smoother
375 – a result of its longer wavelength for the same frequency – but broadly speaking it displays the same structures. Density,
meanwhile, is poorly constrained, due to the sensitivity of the measurements to contrasts in density rather than the parameter
itself, and due to the fact that of the imaged quantities, it has the smallest imprint on the wavefield, making it more sensitive to
data or modelling errors. These observations are demonstrated using spike tests, and efforts are ongoing to improve the joint
imaging of all parameters.

380 The Hellenic slab is the most prominent feature in the model. It extends from the surface down to the transition zone in a
bent, arcuate shape. It is visible in both S and P velocity. Two more or less parallel anomalies are visible beneath the Italian
Peninsula and the Dinarides. The Italian anomaly is visible at depths below ~ 100 km, whereas the Dinaric anomaly extends
towards the surface beneath the southern Dinarides. Although extending towards Greece in the south, the Dinaridic anomaly
is well separated from the Hellenic slab. The final large feature in the model is the high-velocity anomaly beneath Anatolia,
385 interpreted as the Cyprus slab. This structure dips towards the north and east beneath the western and central parts of Anatolia.

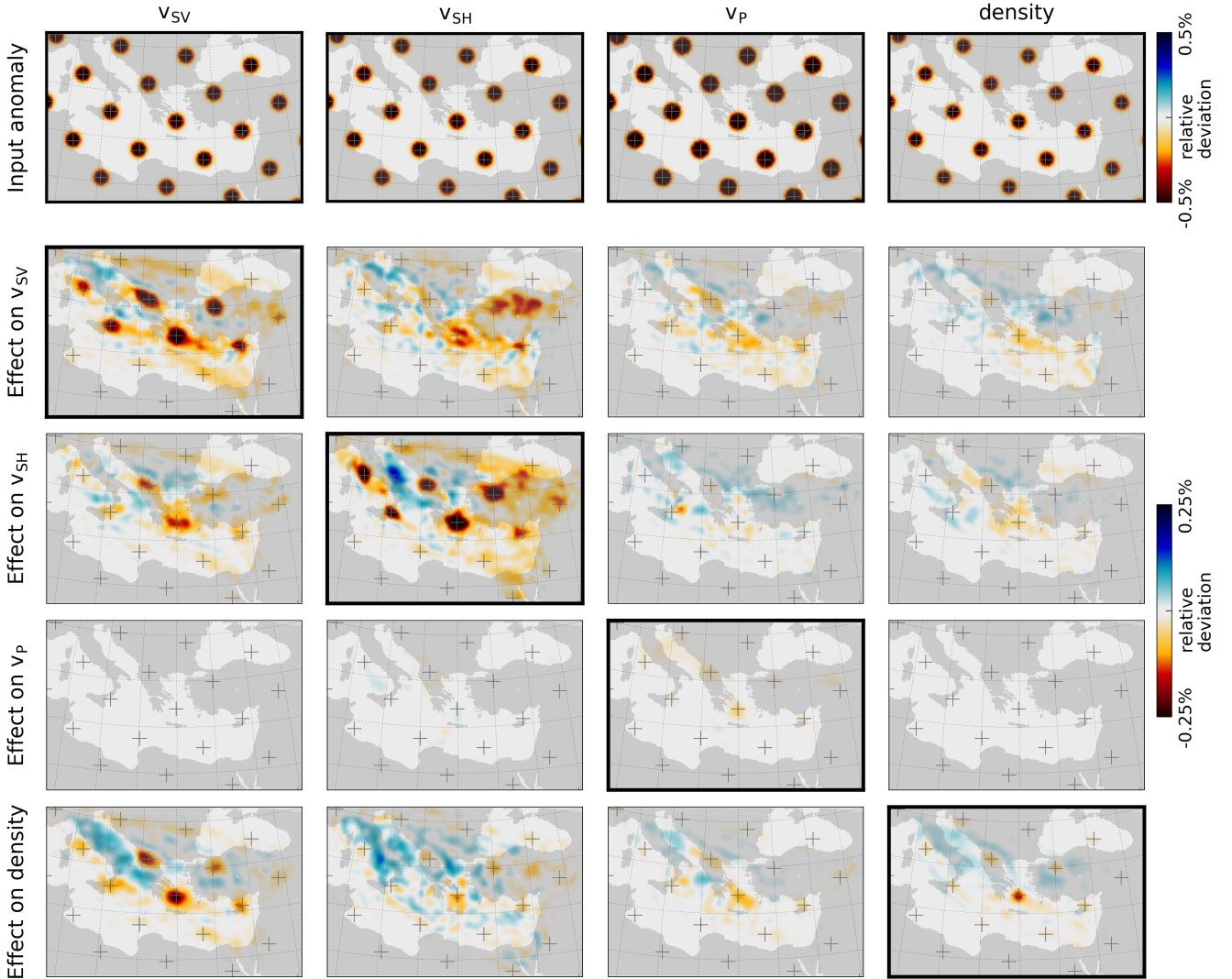


Figure 15. Spike tests conducted for model 91 in the period band 28–150 s, designed in the spirit of Rawlinson and Spakman (2016). Each of the columns represents a separate test with a chequered grid of spikes in one of the parameters. We denote the original model as \mathbf{m}_{91} , the model with spikes as \mathbf{m}_s and the model produced after 5 iterations as \mathbf{m}_{s+5} . The updated reference model is \mathbf{m}_{96} . The top row represents the input anomaly for that particular parameter, where we show $\mathbf{m}_o - \mathbf{m}_s$. In the following four rows, we show the cumulative model update after five iterations – i.e. $(\mathbf{m}_{s+5} - \mathbf{m}_s) - (\mathbf{m}_{96} - \mathbf{m}_{91})$ – for each of the parameters. Results are shown for a depth of 100 km– **additional slices can be found in the Supplementary Material.**

No clear connection between the shallow and dipping parts of the anomaly are imaged, and it is also well separated from the Hellenic slab.

Code and data availability. All data were downloaded from publicly available data repositories such as IRIS (www.iris.edu) and ORFEUS (www.orfeus-eu.org) using the ObsPy/LASIF mass downloader. Processing and workflow took place using LASIF (Krischer et al., 2015, downloadable via <http://lasif.net>) and ObsPy (Beyreuther et al., 2010, <https://www.obspy.org>), which are free open source Python libraries. The simulations themselves were run using the wave propagation package SES3D. This is free open source software released under Apache 2.0 License. It is available for download at <https://cos.ethz.ch/software/production/ses3d.html>. The final model is available as ascii and vtk files, the former suitable for interaction with ses3d, the latter suitable for viewing with ParaView.

Video supplement. A video demonstration of the final model is available through the Supplementary material.

Author contributions. NB mainly designed the project, conducted the research and wrote most of the manuscript, in collaboration with AF. AG designed the optimisation algorithm and wrote the code that interfaces the simulations and inversion workflow, specifically adapted to the research project and to the cluster that the simulations were run on. AF helped design the project and supervised the execution, and helped write the manuscript.

Competing interests. No competing interest are present.

Acknowledgements. We thank the editor Caroline Beghein and two anonymous reviewers for their valuable comments. This research was funded by Netherlands Organisation for Scientific Research NWO grant under Project Number 864.11.008, the Swiss National Supercomputing Center (CSCS) in the form of the ch1 and s868 projects and the European Research Council (ERC) under the European Union's Horizon 2020 research and innovation programme under grant agreement No 714069. We furthermore gratefully acknowledge the enormous quantities of freely available seismic data that are continuously collected by and made available to the seismological community. IRIS and ORFEUS, as well as institutional data centres play no small role in facilitating this. LASIF was the main workhorse for carrying out all the data and window selection in this project. We thank Lion Krischer, who wrote the original version used in this project, and all others who have contributed to this freely available tool. This would not be possible without the seismological functionality that has been developed in the ObsPy toolkit. All simulations made use of ses3d and SISYPHUS, which were run on the CSCS Swiss National Supercomputing Centre cluster Piz Daint. We are grateful to all CSCS staff who were always quick to help out and get things working. Finally, we thank Rob Govers and Deborah Wehner for carefully reading the manuscript with the critical eye of the outsider.

References

- Afanasiev, M., Peter, D., Sager, K., Simutè, S., Ermert, L., Krischer, L., and Fichtner, A.: Foundations for a multiscale collaborative global Earth model, *Geophysical Journal International*, 204, 39–58, 2015.
- Ahrens, J., Geveci, B., and Law, C.: Paraview: An end-user tool for large data visualization, *The visualization handbook*, 2005.
- 415 Akçelik, V., Biros, G., and Ghattas, O.: Parallel multiscale Gauss-Newton-Krylov methods for inverse wave propagation, in: *Supercomputing, ACM/IEEE 2002 Conference*, pp. 41–41, IEEE, 2002.
- Aki, K., Christoffersson, A., and Husebye, E. S.: Determination of the three-dimensional seismic structure of the lithosphere, *Journal of Geophysical Research*, 82, 277–296, <https://doi.org/10.1029/JB082i002p00277>, <http://dx.doi.org/10.1029/JB082i002p00277>, 1977.
- Amaru, M.: Global travel time tomography with 3-D reference models, Ph.D. thesis, Utrecht University, 2007.
- 420 Babuška, V. and Cara, M.: *Seismic anisotropy in the Earth.*, Kluwer Academic Publishers, Dordrecht, Boston, London., 1991.
- Bakırcı, T., Yoshizawa, K., and Özer, M. F. r.: Three-dimensional S-wave structure of the upper mantle beneath Turkey from surface wave tomography, *Geophysical Journal International*, 190, 1058–1076, <https://doi.org/10.1111/j.1365-246X.2012.05526.x>, <https://doi.org/10.1111/j.1365-246X.2012.05526.x>, 2012.
- Beller, S., Monteiller, V., Operto, S., Nolet, G., Paul, A., and Zhao, L.: Lithospheric architecture of the South-Western Alps revealed by
425 multiparameter teleseismic full-waveform inversion, *Geophysical Journal International*, 212, 1369–1388, 2017.
- Bennett, R. A., Hreinsdóttir, S., Buble, G., Bašić, T., Bačić, v., Marjanović, M., Casale, G., Gendaszek, A., and Cowan, D.: Eocene to present subduction of southern Adria mantle lithosphere beneath the Dinarides, *Geology*, 36, 3–6, 2008.
- Beyreuther, M., Barsch, R., Krischer, L., and Wassermann, J.: ObsPy: A Python toolbox for seismology, *Seis. Res. Lett.*, 81, 47–58, 2010.
- Bird, P.: An updated digital model of plate boundaries, *Geochem. Geophys. Geosys.*, 4, 1027–1079, 2003.
- 430 Biryol, C. B., Beck, S., Zandt, G., and Ozacar, A. A.: Segmented African lithosphere beneath the Anatolian region inferred from teleseismic P-wave tomography, *Geophys. J. Int.*, 184, 1037–1057, 2011.
- Biswas, R. and Sen, M.: 2D full-waveform inversion and uncertainty estimation using the reversible jump Hamiltonian Monte Carlo, *SEG Expanded Abstracts*, pp. 1280–1285, 2017.
- Blanch, J. O., Robertsson, J. O. A., and Symes, W. W.: Modelling of a constant Q : Methodology and algorithm for an efficient and optimally
435 inexpensive viscoelastic technique, *Geophysics*, 60, 176–184, 1995.
- Blom, N. A., Boehm, C., and Fichtner, A.: Synthetic inversions for density using seismic and gravity data, *Geophys. J. Int.*, 209, 1204–1220, <https://doi.org/10.1093/gji/ggx076>, [+http://dx.doi.org/10.1093/gji/ggx076](http://dx.doi.org/10.1093/gji/ggx076), 2017.
- Bozdağ, E., Peter, D., Lefebvre, M., Komatitsch, D., Tromp, J., Hill, J., Podhorszki, N., and Pugmire, D.: Global adjoint tomography: first-generation model, *Geophysical Supplements to the Monthly Notices of the Royal Astronomical Society*, 207, 1739–1766, 2016.
- 440 Bozdağ, E. and Trampert, J.: On crustal corrections in surface wave tomography, *Geophys. J. Int.*, 172, 1066–1082, 2008.
- Bunks, C., Saleck, F. M., Zaleski, S., and Chavent, G.: Multiscale seismic waveform inversion, *Geophysics*, 60, 1457–1473, 1995.
- Capdeville, Y., Guillot, L., and Marigo, J. J.: 1-D non periodic homogenization for the wave equation, *Geophys. J. Int.*, 181, 897–910, 2010.
- Cerjan, C., Kosloff, D., Kosloff, R., and Reshef, M.: A nonreflecting boundary condition for discrete acoustic and elastic wave equations, *Geophysics*, 50, 705–708, 1985.
- 445 Channell, J. E. T.: Palaeomagnetism and palaeogeography of Adria, Geological Society, London, Special Publications, 105, 119–132, <https://doi.org/10.1144/GSL.SP.1996.105.01.11>, <https://sp.lyellcollection.org/content/105/1/119>, 1996.

- Crotwell, H. P., Owens, T. J., and Ritsema, J.: The TauP Toolkit: Flexible seismic travel-time and ray-path utilities, *Seismological Research Letters*, 70, 154–160, 1999.
- Dahlen, F., Hung, S.-H., and Nolet, G.: Fréchet kernels for finite-frequency traveltimes – I. Theory, *Geophys. J. Int.*, 141, 157–174, 2000.
- 450 Dewey, J., Helman, M., Knott, S., Turco, E., and Hutton, D.: Kinematics of the western Mediterranean, Geological Society, London, Special Publications, 45, 265–283, 1989.
- Dziewoński, A. M. and Anderson, D. L.: Preliminary reference Earth model, *Phys. Earth Planet. Inter.*, 25, 297–356, 1981.
- Dziewoński, A. M., Hager, B. H., and O’Connell, R. J.: Large-scale heterogeneities in the lower mantle, *J. Geophys. Res.*, 82, 239–255, 1977.
- 455 Dziewonski, A. M., Chou, T.-A., and Woodhouse, J. H.: Determination of earthquake source parameters from waveform data for studies of global and regional seismicity, *Journal of Geophysical Research: Solid Earth*, 86, 2825–2852, <https://doi.org/10.1029/JB086iB04p02825>, <http://dx.doi.org/10.1029/JB086iB04p02825>, 1981.
- Ekström, G., Nettles, M., and Dziewonski, A. M.: The global CMT project 2004-2010: centroid moment tensors for 13,017 earthquakes, *Phys. Earth Planet. Inter.*, 200-201, 1–9, 2012.
- 460 Engdahl, E. R., van der Hilst, R., and Buland, R.: Global teleseismic earthquake relocation with improved travel times and procedures for depth determination, *Bulletin of the Seismological Society of America*, 88, 722–743, 1998.
- Faccenna, C., Piromallo, C., Crespo-Blanc, A., Jolivet, L., and Rossetti, F.: Lateral slab deformation and the origin of the western Mediterranean arcs, *Tectonics*, 23, 2004.
- Faccenna, C., Becker, T. W., Auer, L., Billi, A., Boschi, L., Brun, J. P., Capitanio, F. A., Funicello, F., Horvath, F., Jolivet, L., Piromallo, C., 465 Royden, L., Rossetti, F., and Serpelloni, E.: Mantle dynamics in the Mediterranean, *Reviews of Geophysics*, 52, 283–332, 2014.
- Fichtner, A.: *Full Seismic Waveform Modelling and Inversion.*, Springer, Heidelberg., 2010.
- Fichtner, A. and Igel, H.: Efficient numerical surface wave propagation through the optimization of discrete crustal models - a technique based on non-linear dispersion curve matching (DCM), *Geophys. J. Int.*, 173, 519–533, 2008.
- Fichtner, A. and van Driel, M.: Models and Fréchet kernels for frequency-(in)dependent Q, *Geophys. J. Int.*, 198, 1878–1889, 2014.
- 470 Fichtner, A. and van Leeuwen, T.: Resolution analysis by random probing, *J. Geophys. Res.*, 120, doi:10.1002/2015JB012106, 2015.
- Fichtner, A., Bunge, H.-P., and Igel, H.: The adjoint method in seismology - I. Theory, *Phys. Earth Planet. Inter.*, 157, 86–104, 2006.
- Fichtner, A., Kennett, B. L. N., Igel, H., and Bunge, H.-P.: Theoretical background for continental- and global-scale full-waveform inversion in the time-frequency domain., *Geophys. J. Int.*, 175, 665–685, 2008.
- Fichtner, A., Saygin, E., Taymaz, T., Cupillard, P., Capdeville, Y., and Trampert, J.: The deep structure of the North Anatolian Fault Zone, 475 *Earth Planet. Sci. Lett.*, 373, 109–117, 2013a.
- Fichtner, A., Trampert, J., Cupillard, P., Saygin, E., Taymaz, T., Capdeville, Y., and Villasenor, A.: Multi-scale full waveform inversion, *Geophys. J. Int.*, 194, 534–556, 2013b.
- Fichtner, A., van Herwaarden, D.-P., Afanasiev, M., Simutè, S., Krischer, L., Çubuk Sabuncu, Y., Taymaz, T., Colli, L., Saygin, E., Villaseñor, A., Trampert, J., Cupillard, P., Bunge, H.-P., and Igel, H.: The Collaborative Seismic Earth Model: Generation 1, *Geophysical Research Letters*, 45, 4007–4016, <https://doi.org/10.1029/2018GL077338>, <https://agupubs.onlinelibrary.wiley.com/doi/abs/10.1029/2018GL077338>, 2018.
- 480 Fletcher, R. and Reeves, C. M.: Function minimization by conjugate gradients, *The computer journal*, 7, 149–154, 1964.
- French, S. W. and Romanowicz, B. A.: Whole-mantle radially anisotropic shear velocity structure from spectral-element waveform tomography, *Geophysical Journal International*, 199, 1303–1327, <https://doi.org/10.1093/gji/ggu334>, [+http://dx.doi.org/10.1093/gji/ggu334](http://dx.doi.org/10.1093/gji/ggu334), 2014.

- 485 Gebraad, L., Boehm, C., and Fichtner, A.: Bayesian elastic full-waveform inversion using Hamiltonian Monte Carlo, *J. Geophys. Res.*, p. in press, 2020.
- Godey, S., Bossu, R., and Guilbert, J.: Improving the Mediterranean seismicity picture thanks to international collaborations, *Physics and Chemistry of the Earth, Parts A/B/C*, 63, 3–11, 2013.
- Gokhberg, A. and Fichtner, A.: Full-waveform inversion on heterogeneous HPC systems, *Comp. Geosci.*, 89, 260–268, 2016.
- 490 Govers, R. and Wortel, M.: Lithosphere tearing at STEP faults: Response to edges of subduction zones, *Earth and Planetary Science Letters*, 236, 505–523, 2005.
- Granot, R.: Palaeozoic oceanic crust preserved beneath the Eastern Mediterranean, *Nature Geoscience*, 9, 701, 2016.
- Hjörleifsdóttir, V. and Ekström, G.: Effects of three-dimensional Earth structure on CMT earthquake parameters, *Phys. Earth Planet. Inter.*, 179, 178–190, 2010.
- 495 Hosseini, K.: Global multiple-frequency seismic tomography using teleseismic and core-diffracted body waves, Ph.D. thesis, lmu, 2016.
- Howell, A., Jackson, J., Copley, A., McKenzie, D., and Nissen, E.: Subduction and vertical coastal motions in the eastern Mediterranean, *Geophysical Journal International*, 211, 593–620, 2017.
- Jackson, J.: Living with earthquakes: know your faults, *Journal of Earthquake Engineering*, 5, 5–123, 2001.
- Jolivet, L., Brun, J.-P., Gautier, P., Lallemand, S., and Patriat, M.: 3D-kinematics of extension in the Aegean region from the early Miocene
500 to the present – insights from the ductile crust, *Bulletin - Société Géologique de France*, 165, 195–209, 1994.
- Koulakov, I., Jakovlev, A., Zabelina, I., Roure, F., Cloetingh, S., El Khrepy, S., and Al-Arifi, N.: Subduction or delamination beneath the Apennines? Evidence from regional tomography, *Solid Earth*, 6, 669–679, <https://doi.org/10.5194/se-6-669-2015>, <https://www.solid-earth.net/6/669/2015/>, 2015.
- Krischer, L., Fichtner, A., Žukauskaitė, S., and Igel, H.: Large-scale seismic inversion framework, *Seis. Res. Lett.*, 86, 1198–1207, 2015.
- 505 Laske, G., Masters, G., Ma, Z., and Pasyanos, M.: Update on CRUST1.0 – A 1-degree global model of Earth’s crust, in: *Geophys. Res. Abstr.*, vol. 15, p. 2658, EGU General Assembly Vienna, Austria, 2013.
- Legendre, C. P., Meier, T., Lebedev, S., Friederich, W., and Viereck-Götte, L.: A shear wave velocity model of the European upper mantle from automated inversion of seismic shear and surface waveforms, *Geophysical Journal International*, 191, 282–304, <https://doi.org/10.1111/j.1365-246X.2012.05613.x>, <https://doi.org/10.1111/j.1365-246X.2012.05613.x>, 2012.
- 510 Luo, Y. and Schuster, G. T.: Wave-equation traveltime inversion., *Geophysics*, 56, 645–653, 1991.
- Marone, F., Van Der Lee, S., and Giardini, D.: Three-dimensional upper-mantle S-velocity model for the Eurasia–Africa plate boundary region, *Geophysical Journal International*, 158, 109–130, 2004.
- McKenzie, D.: Active tectonics of the Mediterranean region, *Geophysical Journal International*, 30, 109–185, 1972.
- McKenzie, D.: Active tectonics of the Alpine–Himalayan belt: the Aegean Sea and surrounding regions, *Geophysical Journal International*,
515 55, 217–254, <https://doi.org/10.1111/j.1365-246X.1978.tb04759.x>, <https://doi.org/10.1111/j.1365-246X.1978.tb04759.x>, 1978.
- Montagner, J. P. and Jobert, N.: Vectorial tomography -II. Application to the Indian Ocean, *Geophys. J.*, 94, 309–344, 1988.
- Nocedal, J. and Wright, S.: *Numerical Optimization*, Springer Science & Business Media, 2006.
- Nuber, A., Manukyan, E., and Maurer, H.: Ground topography effects on near-surface elastic full waveform inversion, *Geophys. J. Int.*, 207, 67–71, <https://doi.org/10.1093/gji/ggw267>, <https://doi.org/10.1093/gji/ggw267>, 2016.
- 520 Operto, S. and Miniussi, A.: On the role of density and attenuation in three-dimensional multiparameter viscoacoustic VTI frequency-domain FWI: an OBC case study from the North Sea, *Geophysical Journal International*, 213, 2037–2059, <https://doi.org/10.1093/gji/ggy103>, <https://doi.org/10.1093/gji/ggy103>, 2018.

- Özbakır, A. D., Şengör, A., Wortel, M., and Govers, R.: The Pliny–Strabo trench region: A large shear zone resulting from slab tearing, *Earth and Planetary Science Letters*, 375, 188–195, 2013.
- 525 Pan, W., Geng, Y., and Innanen, K. A.: Interparameter trade-off quantification and reduction in isotropic-elastic full-waveform inversion: synthetic experiments and Hussar land data set application, *Geophysical Journal International*, 213, 1305–1333, <https://doi.org/10.1093/gji/ggy037>, <https://doi.org/10.1093/gji/ggy037>, 2018.
- Piomallo, C. and Morelli, A.: Imaging the Mediterranean upper mantle by P-wave travel time tomography, *Annals of Geophysics*, 40, 1997.
- Piomallo, C. and Morelli, A.: P wave tomography of the mantle under the Alpine–Mediterranean area, *Journal of Geophysical Research: Solid Earth*, 108, 2003.
- 530 Plonka, A. I., Blom, N. A., and Fichtner, A.: The imprint of crustal density heterogeneities on regional seismic wave propagation, *Solid Earth*, 7, 1591–1608, <https://doi.org/10.5194/se-7-1591-2016>, <http://www.solid-earth.net/7/1591/2016/>, 2016.
- Portner, D. E., Delph, J. R., Biryol, C. B., Beck, S. L., Zandt, G., Özacar, A. A., Sandvol, E., and Türkelli, N.: Subduction termination through progressive slab deformation across Eastern Mediterranean subduction zones from updated P-wave tomography beneath Anatolia, *Geosphere*, 14, 907–925, 2018.
- 535 Prieux, V., Brossier, R., Operto, S., and Virieux, J.: Multiparameter full waveform inversion of multicomponent ocean-bottom-cable data from the Valhall field. Part 1: Imaging compressional wave speed, density and attenuation, *Geophys. J. Int.*, 194, 1640–1664, 2013.
- Rawlinson, N. and Spakman, W.: On the use of sensitivity tests in seismic tomography, *Geophysical Journal International*, 205, 1221–1243, <https://doi.org/10.1093/gji/ggw084>, <http://dx.doi.org/10.1093/gji/ggw084>, 2016.
- 540 Reilinger, R., McClusky, S., Vernant, P., Lawrence, S., Ergintav, S., Cakmak, R., Ozener, H., Kadirov, F., Guliev, I., Stepanyan, R., et al.: GPS constraints on continental deformation in the Africa–Arabia–Eurasia continental collision zone and implications for the dynamics of plate interactions, *Journal of Geophysical Research: Solid Earth*, 111, 2006.
- Ritsema, J., van Heijst, H., and Woodhouse, J. H.: Complex shear wave velocity structure imaged beneath Africa and Iceland, *Science*, 286, 1925–1928, 1999.
- 545 Salaün, G., Pedersen, H. A., Paul, A., Farra, V., Karabulut, H., Hatzfeld, D., Papazachos, C., Childs, D. M., Pequegnat, C., and the SIMBAAD Team: High-resolution surface wave tomography beneath the Aegean–Anatolia region: constraints on upper-mantle structure, *Geophys. J. Int.*, 190, 406–420, 2012.
- Schivardi, R. and Morelli, A.: Surface wave tomography in the European and Mediterranean region, *Geophysical Journal International*, 177, 1050–1066, 2009.
- 550 Simuté, S., Steptoe, H., Cobden, L., Gokhberg, A., and Fichtner, A.: Full-waveform inversion of the Japanese Islands region, *J. Geophys. Res.*, 121, 3722–3741, <https://doi.org/10.1002/2016JB012802>, <http://dx.doi.org/10.1002/2016JB012802>, 2016.
- Snieder, R.: Large-scale waveform inversions of surface waves for lateral heterogeneity: 2. Application to surface waves in Europe and the Mediterranean, *Journal of Geophysical Research: Solid Earth*, 93, 12 067–12 080, 1988.
- Spakman, W. and Wortel, R.: A tomographic view on western Mediterranean geodynamics, in: *The TRANSMED atlas. The Mediterranean region from crust to mantle*, pp. 31–52, Springer, 2004.
- 555 Spakman, W., Wortel, M., and Vlaar, N.: The Hellenic subduction zone: a tomographic image and its geodynamic implications, *Geophysical research letters*, 15, 60–63, 1988.
- Takeuchi, H. and Saito, M.: *Seismic Surface Waves*, *Methods in computational Physics*, 11, 217–295, 1972.
- Tape, C., Liu, Q., and Tromp, J.: Finite-frequency tomography using adjoint methods - Methodology and examples using membrane surface waves., *Geophys. J. Int.*, 168, 1105–1129, 2007.
- 560

- Tape, C., Liu, Q., Maggi, A., and Tromp, J.: Seismic tomography of the southern California crust based upon spectral-element and adjoint methods., *Geophys. J. Int.*, 180, 433–462, 2010.
- Tarantola, A.: Inversion of Seismic Reflection Data in the Acoustic Approximation, *Geophysics*, 49, 1259–1266, 1984.
- Tarantola, A.: A strategy for nonlinear elastic inversion of seismic reflection data., *Geophysics*, 51, 1893–1903, 1986.
- 565 Tarantola, A.: Theoretical background for the inversion of seismic waveforms, including elasticity and attenuation, *Pure Appl. Geophys.*, 128, 365–399, 1988.
- Tromp, J., Tape, C., and Liu, Q.: Seismic tomography, adjoint methods, time reversal and banana-doughnut kernels, *Geophys. J. Int.*, 160, 195–216, 2005.
- Valentine, A. P. and Woodhouse, J. H.: Reducing errors in seismic tomography: combined inversion for sources and structure, *Geophysical Journal International*, 180, 847–857, 2010.
- 570 Virieux, J. and Operto, S.: An overview of full waveform inversion in exploration geophysics, *Geophysics*, 74, WCC127–WCC152, 2009.
- Weston, J., Engdahl, E. R., Harris, J., Di Giacomo, D., and Storchak, D. A.: ISC-EHB: reconstruction of a robust earthquake data set, *Geophysical Journal International*, 214, 474–484, <https://doi.org/10.1093/gji/ggy155>, <https://doi.org/10.1093/gji/ggy155>, 2018.
- Wortel, M. J. R. and Spakman, W.: Subduction and Slab Detachment in the Mediterranean–Carpathian Region, *Science*, 290, 1910–1917, <https://doi.org/10.1126/science.290.5498.1910>, <http://science.sciencemag.org/content/290/5498/1910>, 2000.
- 575 Zielhuis, A. and Nolet, G.: Shear-wave velocity variations in the upper mantle beneath central Europe, *Geophys. J. Int.*, 117, 695–715, 1994.