

~~Oligocene-Miocene extension led to mantle exhumation in the central Ligurian Basin, Western Alpine Domain~~

Seismic evidence for failed rifting in the Ligurian Basin, Western Alpine Domain

5 Anke Dannowski¹, Heidrun Kopp^{1,2}, Ingo Grevemeyer¹, Dietrich Lange¹, Martin Thorwart², Jörg Bialas¹, and Martin Wollatz-Vogt¹

¹GEOMAR Helmholtz Centre for Ocean Research Kiel, Germany

²CAU, Christian-Albrechts-Universität zu Kiel, Germany

Correspondence to: Anke Dannowski (adannowski@geomar.de)

10 **Abstract.** The Ligurian Basin is located in the Mediterranean Sea to the north-west of Corsica at the transition from the western Alpine orogen to the Apennine system and was generated by the south-eastward trench retreat of the Apennines-Calabrian subduction zone. Late Oligocene to Miocene rifting caused continental extension and subsidence, leading to the opening of the basin. Yet, it ~~still~~ remains enigmatic if rifting caused continental break-up and seafloor spreading. To reveal its lithospheric architecture, we acquired a ~~state-of-the-art~~ 130-km long seismic refraction and wide-angle reflection profile in the Ligurian

15 Basin. The seismic line was recorded in the framework of SPP2017 4D-MB, the German component of the European AlpArray initiative, and trends in a NE-SW direction at the centre of the Ligurian Basin, roughly parallel to the French coastline.

The seismic data were recorded on the newly developed GEOLOG recorder, designed at GEOMAR, and are dominated by sedimentary refractions and show mantle Pn arrivals at offsets of up to 70 km and a very prominent wide-angle Moho reflection. The main features share several characteristics (i.e. offset range, continuity), generally associated with continental

20 settings rather than documenting oceanic crust emplaced by seafloor spreading. Seismic tomography results are ~~augmented~~ complemented by gravity data and yield a 7.5~6-8 km thick sedimentary cover and the seismic Moho at 11-13 km depth below the sea surface. Our study reveals that the oceanic domain does not extend as far north as previously assumed. Whether Oligocene-Miocene extension led to extreme thinned continental crust or exhumed subcontinental mantle with a low grade of mantle serpentinisation remains enigmatic. However, rifting failed before oceanic spreading was initiated, accompanied by the

25 formation of mantle derived oceanic crust, which is directly underlain by serpentinised mantle material at the south-western end of the profile. The acoustic basement at the north-eastern termination is interpreted to be eContinental crust is; thickening towards the NE within the northern Ligurian Basin.

~~Our study reveals that the oceanic domain does not extend as far north as previously assumed and that extension led to extreme continental thinning and exhumation of sub-continental mantle which eventually became serpentinised.~~

30 1 Introduction

The Ligurian Sea is situated in the north-western Mediterranean Sea at the transition from the western Alpine orogen to the Apennine system. The geodynamic~~al~~ setting of the area is controlled by the convergence of the African and Eurasian plates (e.g. Dercourt et al., 1986). Despite the existing large collection of seismic and other geophysical data, the present-day crustal architecture of the Ligurian Basin is still under discussion and the kinematic boundaries are poorly resolved, in particular, the continent-ocean transition (COT) along the margins as well as its termination to the north-northeast. Imaging clear fault structures within the crust has prove~~nd~~ challenging due to the presence of thick Messinian salt layers and due to the ~~time-of arrival-masking effect~~ of the first seafloor multiple which roughly coincides with the arrival of the reflection of the acoustic basement (Béthoux et al., 2008). Deep drilling data are lacking and the magnetic data are complex and anomalies discontinuous (Bayer et al., 1973). Based on integrated seismic and magnetic data, maps indicating the extent of the oceanic domain were created (i.e. Burrus, 1984; Gueguen et al., 1998; Rollet et al., 2002), however, no axial ridge was imaged near the centre of the basin (Rollet et al., 2002). ~~To explain the mismatch between the expected oceanic domain and the observed seismic signal,~~ ~~The crust in the north-eastern basin was interpreted to be 'atypical' oceanic crust (Mauffret et al., 1995; Chamot-Rooke et al., 1997; Contrucci et al., 2001; Rollet et al., 2002)~~ ~~to explain the mismatch between the expected oceanic domain and the observed seismic signal.~~ A clear change from continental to oceanic crust was only shown for the southern area of the Ligurian Basin, in the Gulf of Lion and offshore Sardinia (Gailler et al., 2009). It is proposed that the oceanic domain is separated from the continental margins by a transitional domain characterised by a high-velocity lower crust (Fig. 1). ~~An good~~ overview of seismic experiments until 2002 is presented in Rollet et al. (2002). Furthermore, the area was revisited or data were re-analysed with modern seismic techniques including the CROP deep seismic profiles (Finetti et al., 2005), the TGS-NOPEC and the SARDINIA profiles (Gailler et al., 2009; Jolivet et al., 2015), as well as more recent studies along the French and Italian Riviera with the 3D seismic refraction GROSMarin project (Dessa et al., 2011) and an amphibious ambient noise study (Guerin et al., 2019).

In the frame of the LOBSTER project, we ~~add-obtained~~ a new state-of-the-art seismic refraction line ~~to the database~~ (Fig. 1, red line with orange and yellow triangles). Here, we present the analysis of the seismic refraction ~~line in data from~~ the central Ligurian Basin, which is the extension of a pre-existing ~~seismic~~ profile (Makris et al., 1999), which we call MAKRIS (Fig. 1, black line). We aim to unravel the present-day crustal structure and its nature in the centre of the Ligurian Basin, map the depth of the crust-mantle boundary (seismic Moho), and reveal the styles of deformation during the last extensional phase. We investigate the hypothesis that ~~the~~ Oligocene-Miocene ~~extension-rifting~~ led to either ~~hyper~~-extended continental crust or ~~serpentinised-exhumation of~~ sub-continental mantle below post-rift sediments in the north-eastern Ligurian Basin. ~~A further objective is to provide a seismic velocity model as a contribution to an improved seismic event localisation in the offshore region.~~

2 Geological structures and geodynamics of the Ligurian Sea and the Corsica-Sardinia block

The Ligurian Sea has a width of ~150 km, reaching from the northern tip of Corsica to the Ligurian coast near the city of Sanremo. It widens towards the southwest to ~175 km between Calvi (Corsica) and Cannes. South of ~~the-an~~ imaginary line between Ajaccio (Corsica) and Toulon, the basin-Ligurian Sea is roughly 225 km wide. ~~The basin and~~ opens entirely towards the Balearic Sea. The Ligurian Basin itself is smaller with a width of 70 km, 120 km, and 170 km, respectively, along the three dashed grey lines in Figure 1 and the seafloor reaches a depths of ~2700 m. The Ligurian margin is characterised by a narrow and steep slope (10-20 km) with a few listric normal faults (Finetti et al., 2005). The Corsica slope is wider (20-50 km) and the margin is characterised by several listric faults extending over a wider area (~~Dessa et al., 2011~~ Contrucchi et al., 2001; Rollet et al., 2002).

The Ligurian Sea formed as a back-arc basin at the transition from the western Alpine orogen to the Apennine system (e.g. Doglioni et al., 1997; Faccenna et al., 1997; Réhault-Réhault et al., 1984). The Alpine transition is characterised by a change in subduction polarity between the two orogens (Jolivet and Faccenna, 2000; Handy et al., 2010). The Ligurian Basin is the oldest back-arc basin in the Western Mediterranean Sea and developed from Late Oligocene to Early Miocene (Réhault and Béthoux, 1984; Roca and Desegaulx, 1992; Fernández et al., 1995; Jolivet and Faccenna, 2000; Rosenbaum et al., 2002; Finetti et al., 2005; Advokaat et al., 2014). The extension is related to the south-east trench retreat of the Apennines-Calabrian subduction zone initiated in the Oligocene (Montigny et al., 1981; Réhault and Béthoux, 1984; Vigliotti and Langenheim, 1995; Gueguen et al., 1998; Rosenbaum et al., 2002; Faccenna et al., 2001).

Rifting has initiated ~30 Ma ago at a rate of ~1 cm/yr in the NE and ~2 cm/yr in the SW (Rollet et al., 2002). The initiation is associated with magmatism on land along the western Ligurian margin (Rollet et al., 2002). At roughly 21 Ma, rifting terminated while an anticlockwise rotation of the Corsica-Sardinia block was initiated (Rollet et al., 2002; Speranza et al., 2002). During this phase, the commencement of oceanic spreading was proposed (Pascal et al., 1993; Contrucchi et al., 2001; Rollet et al., 2002; Finetti et al., 2005). These authors referred to tholeiitic volcanic edifices to solidify their interpretation and interpreted the pattern of magnetic data (Bayer et al., 1973) to be a result of two main discontinuous volcanic lineaments, sub-parallel to the basin axis related to oceanic spreading and unroofing of mantle material. The opening of the Ligurian Basin ended ~16-15 Ma ago and was associated with a second calc-alkaline volcanic phase along the Corsican margin (Rollet et al., 2002) that is linked to the migration of the subducting lithosphere towards the E-SE. The extension of the Ligurian Basin ~~stopped-terminated~~ and shifted to the Tyrrhenian Sea while the Apennines-Calabrian subduction zone continued to roll back further southeast until late the Messinian, ~6 Ma (Faccenna et al., 2001; Advokaat et al., 2014). The opening rate was calculated with 7.8-10.3 mm/yr (Moeller et al., 2013). In the north of the Tyrrhenian Sea, extension led to continental crustal thinning (Moeller et al., 2013), while further south in the centre of the Tyrrhenian Basin, the mantle was exhumed and serpentinitised and intruded by Mid-Ocean-Ridge type (MOR-type and intraplate basalts) (Prada et al., 2016). Similar to the Ligurian Basin, the Tyrrhenian Sea shows distributed, non-linear magnetic anomalies (Cella et al., 2008). Anomalies often coincide with

volcanic islands, seamounts or other morphological units of igneous composition. During the Ocean Drilling Project (ODP) Leg 107 at site 651, serpentinised mantle rocks were drilled forming the top of the basement (Bonatti et al., 1990).

95 Gueguen et al. (1998) and Rollet ~~et~~ al. (2002) suggest that the central Ligurian Basin is comprised of oceanic crust. The se authors divided the basin into different zones of continental and oceanic domains based on seismic, magnetic and gravity data (Fig. 1): (1) atypical oceanic crust with (2) transitional zones to (3) continental crust. The location of the northeast-southwest trending continent-ocean transition is proposed to be situated in the vicinity of the volcanic Tristanites Massif (Fig. 1) (Makris et al., 1999) (yellow ~~line~~bar perpendicular to the MAKRIS profile in Figure 1). Based on re-analysed expanding spread profiles
100 (ESP), Contrucci et al. (2001) proposed a 40 km wide area of oceanic crust near the Median Seamount (Fig. 1).

3 Data acquisition, processing, and modelling

Data at different scales resolving the subsurface structure were acquired in the Ligurian Sea in February of 2018 during the cruise MSM71 aboard the German research vessel Maria S. Merian (Kopp et al., 2018). Active seismic refraction data were
105 obtained along the centre of the basin. Our NE-SW trending seismic refraction and wide-angle reflection line is situated in the prolongation of an existing refraction profile in the northern Ligurian Basin (Makris et al., 1999) (Fig. 1) ~~and is presented here~~.

3.1 Data acquisition and processing

The active seismic data were simultaneously recorded on short period ocean bottom seismometers (OBS) and ocean bottom hydrophones (OBH) as well as on a short streamer (280 m long) that was towed behind the vessel ~~in~~at 5 m water depth.
110 Additionally, Parasound sediment echo sounding data were recorded along the profiles. The 127.5 km long refraction seismic profile consists of 15 OBH/OBS at a station spacing of ~ 8km (Fig. 1). A total of 1079 shots were fired by an ~~84~89-liter~~ (5420 inch³) G-gun array, consisting of 2 sub-arrays. Each sub-array with a cluster of 2x8.5 litres (520 inch³), followed by a cluster in the middle of 2x6.2 litres (2x380 inch³, port) and 2x4.1 litres (2x250 inch³, starboard), and the third cluster again of 2x8.5 litres for both sub-arrays. The array with a string distance of 12 m was towed at 8 m below the sea-surface and 40 m behind
115 the vessel. A shot at an interval of 60 s; ~~resulting~~ resulted in a shot ~~interval~~distance of ~123 m. The guns were shot at ~190 bar providing a dominant frequency band of approximately 5-70 Hz. The location of the stations on the seafloor was ~~estimated~~ determined using the symmetry of the direct water arrivals from the shots on both sides. For this purpose, the direct arrival was picked and the deviation between computed and real travel times was minimised by adjusting the OBS's position along the profile. Dislocation off-line cannot be corrected with this method. For 2D travelttime modelling, the stations were projected
120 on to the profile. The airgun shots were recorded using newly developed GEOLOG data loggers, designed at GEOMAR. All recorders ~~ran~~operated reliably during the deployment of 2 days with a negligible absolute clock drift between -1.03 ms ~~to~~ and +0.72 ms. The sampling frequency ~~was~~ 250 Hz. The data processing included the conversion of the continuous data from GEOLOG format into the standard continuous SEG-Y format using the GEOLOG programming interface. Afterwards, the

continuous SEG-Y data were converted into standard trace-based SEG-Y format (Fig. 2b). Simultaneously, the clock drift was corrected, a step important for OBS data, since the instruments cannot be continuously synchronized via GPS during deployment as commonly done onshore. A gated Wiener multi-trace deconvolution with an autocorrelation average of 51 traces was applied to the shot gathers to compress the basic wavelet, to leave the Earth's reflectivity in the seismic trace and to remove the source signature and the hydrophone and geophone responses.

3.2 The GEOLOG recorder

The GEOLOG is a 32-bit seismic data logger designed to digitise data from a three-component seismometer and a hydrophone. We recorded the hydrophone output on two channels (channels 1 and 5) at two different amplification levels providing well amplified long-range records (gain=16) and preventing clipped amplitudes from short-range airgun shots (gain=1) to minimise difficulties with amplitude restoration because no gain range was implemented. The gain for the three seismometer channels 2 to 4 was set to 16, which provided good signal to noise ratios for all record offsets without clipping of amplitudes. Two additional analogue pins can be used as general-purpose input/output (GPIO) for measuring power levels for example. 3.3 V and 5 V connectors can serve external devices. Sampling intervals between 50 Hz and 4 kHz are controlled either by an atomic clock or by a temperature compensated clock (SEASCAN). We used an external GPS receiver for synchronization of the internal clock prior and after deployment, which was driven by the GEOLOG itself. Our seismic data were stored on two micro SD cards with a volume of 32 GB each. The recorder has been tested and proved reliable for writing speeds and SD cards of up to 128 GB (larger capacities are possible). The low power consumption of 375 mW (average battery drain) allowed us to save batteries. We used only 8 alkaline batteries per station for our short-term deployment. Thus, using lithium batteries, long-term deployments of more than 9 months can be performed. Battery power can further be saved by a delayed start of recording up to 31 days after programming. We set the recording parameters, i.e. the number of channels, gain and sampling rate, using the a graphical user interface. The recorders can be programmed through any terminal program on a Windows or Linux operating system. The programming device was connected via RS232 using an RS232-USB adapter. A second RS232 interface can be used to drive external sensors (e.g. levelling of broadband seismometers). The GPS system used for the internal clock time synchronisation was developed together with the recorder and can operate with GPS, GLONASS, GALLILEO and QZSS enabling operation worldwide and in polar regions. Besides stable output of NMEA data (defined by the National Marine Electronics Association) and a PPS (pulse-per-second) time signal, the German DCF-77 code is also available. Moreover, the GPS system is available to deliver time or distance based trigger with TTL output, NMEA sequence and records of time stamps on an SD card.

3.3 Data description and analysis

The airgun shots can be followed for offsets up to 60 km on all 15 stations (Fig. 2). In general, the sections look very similar with clear sedimentary arrivals and wide-angle Moho reflections (PmP) as well as mantle phases (Pn) at a critical distance

155 between 25 km and 35 km to the stations (Fig. 2a). Although phase arrivals show common features in all record sections (Fig. 2a), the characteristics of the seismic phases change slightly from south to north (Fig. 2b-2d).

As a result of decreasing water depth towards the northeast, the direct waves through water (Pw) arrive later at the southern stations than at the northern stations (Fig. 2a). ~~The picks~~ Arrivals from a shallow sedimentary reflection phase (PsP) ~~arrive occur~~ approximately 0.5 s to 1 s after the direct ~~arrival-wave~~ and result from the top of salts that become shallower towards the north (as imaged in the multichannel seismic data in Fig. 3a). The red picks (Ps1) and the orange picks (Ps2) (Fig. 2b-2d) are interpreted as refracted phases through Plio-Quaternary and older sediments, respectively. The apparent seismic velocity of the Ps2 is very constant at ~4.3 km/s to ~4.6 km/s. The phase shows many undulations and some shadow zones (Fig. 3b) caused by the salt unit that displays intense doming and is possibly disrupted by some volcanic structures that are imaged in the MCS (Fig. 3a) and the Parasound data (Fig. 3c). This phase continues as a secondary arrival (Ps3) with a similar apparent velocity of ~4.6 km/s at the southern stations but disappears at the northern stations. Based on the apparent velocity and forward modelling, we interpret phase Ps3 as a refracted phase through the sediments. Simultaneously, when phase Ps3 disappears ~~(from OBS208 towards the north~~ (compare to OBS209 (Fig. 2c), where Ps3 only occurs on the southern branch), an additional refracted phase (Pg) (green picks in Fig. 2c-2d) occurs with an increasing range of offsets observed on the stations and becomes longer northwards. The phase has an apparent velocity of ~6.2 km/s. At an offset of about 25 km, an abrupt change in the apparent seismic velocity to ~8 km/s occurs for the first arrival ~~occurs to apparent velocities of ~8 km/s~~, as typically observed in the oceanic upper mantle. The yellow picks (Fig. 2b-2d) are refracted mantle phases (Pn) ~~that at the northern stations and~~ show a similar apparent seismic velocity of ~8 km/s at the northern stations. However, the critical distance at the northern stations moves to slightly larger offsets of at about up to ~30 km. Furthermore, an earlier very short reflection occurs at 20-25 km offset. ~~The gravimetric data (Fig. 5a) show a change approx. 20 km south of OBS208.~~ Pn phases at the southern stations are very weak, while the PmP is relatively strong compared to typical oceanic crust characteristics. The observed slight changes in the seismic signal are accompanied by slight changes in the free-air gravity anomaly around profile KM 60 (approx. 20 km south of OBS209), as discussed below.

3.4 P-wave traveltimes tomography modelling strategy and parameters

A preliminary seismic velocity model was build using RAYINVR (Zelt, 1999) to (1) reveal the overall structure of the ~~datapoint~~ profile, (2) manually assign the picked phases to certain layers, and (3) serve as starting model point for the travel time tomography. Travel times were picked on the hydrophone channels using the interactive analysis tool for wide-angle seismic data PASTEUP (Fujie et al., 2008). The overall quality of the hydrophone data was slightly better compared to the vertical geophone channel, however, the ~~The~~ vertical ~~seismometer~~ component was used for picking to confirm and to complement the picks observed on the hydrophone channel. In addition, multiples were picked when above the noise level (because of constructive interference) and where primary waves are below the noise level (Meléndez et al., 2014). ~~in addition and~~ Picks of water layer multiple phases were used during the forward modelling approach to confirm the layer boundaries and seismic velocities. Thereafter, a travel time tomographic inversion (tomo2D from Korenaga et al., (2000)) was applied to invert the

seismic P-wave velocity model and yield model uncertainties. The picks were assigned pick uncertainties ranging from 20 ms for clear near offset phases (Ps1), 30 ms for intermediate offsets (Ps2 and Pg), and up to 50-70 ms for picks at larger offset (Pn and PmP) taking into account the decreased resolution due to the increased wave length of the seismic signal and the decreased signal-noise-ratio. In a first step only near offset picks with distances smaller than 15 km were inverted. Subsequently, all first arrivals and the mantle reflections were inverted with a set of starting models that converged to χ^2 values of less than 1 within 5 iterations. To test the model space and its limits, ~~the~~ starting models, ranging from velocities between 1.8 km/s and 2.5 km/s at the seafloor with different velocity gradients, and ranging from 4.5 km/s to 7.5 km/s at 12-13.5 km depth to mimic the different types of crust, were manually created using ~~rayinvr~~ RAYINVR (Zelt, 1999). The starting models used in the analysis were 1D hanging below the seafloor (Fig. 4c). To carefully evaluate the resulting velocity models, we used three criteria: (1) travel times need to fit the data (Fig. 2a), (2) travel time residuals, RMS misfit and χ^2 had to be low (i.e. ~~e~~ $\chi^2 - \chi^2 \sim 1$), and (3) the gravity response (calculated after a velocity-density conversion ~~after~~) (Korenaga et al., 2001) of the resulting density model must yield comparable results to the satellite gravity data. Based on ~~the~~ this evaluation, 17 models (Fig. 4c) were chosen to generate an average model for the crustal part (Fig. 4a, above the Moho) and the standard deviation was calculated (Fig. 4b). Overall, the standard deviation in the crust down to the acoustic basement is smaller than 0.15 km/s, indicating small differences between the inverted velocity models and hence an excellent resolution. Random Gaussian noise was not added, to the travel time picks, however, during modelling re-picking of phases (mainly fine adjustments to the picks) did not lead to major differences in the resulting velocity model. In a further step, the average model was edited by adding different 1D profiles with mantle velocities underneath the crust-mantle boundary (inlay in Fig. 4d). A set of ~~12-14~~ mantle velocity starting models was used to invert for refracted mantle phases, while the model above the seismic Moho was overdamped. Again, an average model and the standard deviation for the mantle were calculated (Fig. 4e). Standard deviations for the mantle P-wave velocities are small (<0.1 km/s), indicating a good resolution of upper mantle velocities. Lastly, the very short reflected phases interpreted to result from the top of continental crust were calculated as a floating reflector without implementing a velocity discontinuity into the model to confirm the top of crust, i.e. the crystalline basement.

4 Results

4.1 Seismic P-wave velocity distribution

In general, the average P-wave velocity along the profile (Fig. 4a) shows only minor lateral variations, mainly caused by the salt layers and the corresponding tectonic features at 4-6 km depth. The uppermost portion of the velocity model is characterised by a strong velocity gradient of $\sim 1 \text{ s}^{-1}$ that is laterally ~~very~~ constant. P-wave velocities increase from 2.2 km/s at the seafloor to 3.5 km/s ~~approximately~~ 1.3 km depth below the seafloor. We interpret this unit as Plio-Quaternary sediments mixed with the upper evaporite unit after Rollet et al. (2002), using their multi-channel seismic data profile MA24 (Fig. 1, inlay profile 6). The Plio-Quaternary sediments are imaged as horizontally layered strata in the multi-channel seismic data in Figure 3a. This high velocity-gradient layer thins towards the north, from 1.5 km to 1.2 km thickness; ~~respectively~~, and shows

220 slightly slower velocities at the southern end (2.2 km/s) compared to the northern end (2.4 km/s) at the seafloor. Between ~4
km and 6 km depth, the velocities range from 3.5 km/s to 4.5 km/s, and there are areas where minor velocity inversions are
observed. These low velocity units have a lateral extent of up to 10 km and a velocity contrast of up to ~0.2 km/s. We identify
this section as the Messinian salt unit. From 6 km to ~10 km depth, the seismic velocities increase from ~4.5 km/s at the top
to 5.7 km/s at the bottom. We interpret this section as ~~Pre-Messinian down to~~ syn-rift sediments, possibly ~~from~~ Aquitanian
225 ~~related according~~ to Jolivet et al. (2015), to post-rift sediments, until Pre-Messinian.
~~The acoustic basement occurs at a depth from of 10 km to 11.5 km below the sea surface.~~ In the north-eastern half of the
profile, starting roughly at profile KM 70 (~~Fig. 4a~~), we determine the crystalline basement (CB) (red dashed line in Fig. 4a) at
a depth of 10 km to 11.5 km below the sea surface. ~~the~~The basement velocities increase from 5.8 km/s to 6.6 km/s (marked
with “Y” in Fig. 4a); they are interpreted, based on absolute velocities, as continental crust, thickening towards the north. The
230 acoustic basement here is at a depth of ~10 km below the sea surface. At the opposite southern half of the profile, we could
not identify the CB in the OBS data. However, a strong velocity jump occurs from 5.7 km/s to ≥ 7.3 km/s. ~~We interpret this~~
~~part of the acoustic basement that we interpret~~ as the crust-mantle boundary (Moho). The uppermost mantle is characterised
by seismic velocities > 7.3 km/s that increase to ~8 km/s over a depth interval of 2-3 km. The histogram (Fig. ~~5b4f~~) images a
gap in seismic velocities between 6.6 km/s and 7.3 km/s, which suggests that no fresh oceanic crust material (gabbroic rocks)
235 is present along the profile.

4.2 Gravity modelling

To constrain the crustal structure along the profile, we calculated the gravity response (Talwani et al., 1959) of the final seismic
velocity model and compared it to the free-air gravity anomaly derived from satellite data (Sandwell et al., 2014). The fact that
the profile is situated in the centre of the basin allows us to assume that only minor 3D side-effects occur in our 2D-modelling
240 approach, caused by topography. The velocity-depth distribution was used to assign densities by applying different density-
velocity relations. The water layer is assumed to have a density of 1.03 g/cm³. Gardeners rule, $\rho = 1.74 * V_p^{0.25}$, valid for
sediments between 1.5 km/s $< V_p < 6.1$ km/s (Gardner et al., 1974), was used for the sedimentary layers. For crystalline (non-
volcanic) rocks the relation: $\rho = 0.541 + 0.3601 * V_p$ (Christensen and Mooney, 1995) was used. A density of 3.3 g/cm³ was
assigned ~~for to~~ the mantle. In areas with reduced seismic mantle velocities, the mantle density was reduced to 3.15 g/cm³
245 (Carlson and Miller, 2003). The converted densities explain the observed free-air gravity anomaly for the part covered by our
deployed instruments. We extended the profile further northeast ~~with over~~ the marine part of the MAKRIS line (Fig. 1, inlay
profile 4). From profile KM 127.5 northwards, we related the gross density model structure to the results of the MAKRIS line
(Makris et al., 1999). However, we removed a large step of 10 km in Moho depth and replaced it by a more gradually deepening
Moho, which closely follows ~~closely~~ the top of the layer of underplating in the MAKRIS line. The fit of observed and calculated
250 gravity data ~~is~~ reasonably well supporting the interpretation of a thickening continental crust towards the northeast.

5 Introduction Section (as Heading 1) Discussion

5.1 Nature of the crustlithosphere

255 The seismic velocity model along our refraction profile (Fig. 4a) shows no common features ~~for of~~ oceanic crust. Oceanic crust typically consists of a high-velocity gradient in Layer 2 and a lower velocity gradient in Layer 3 (e.g. White et al., 1992; Grevenmeyer et al., 2018; Christeson et al., 2019). The absolute seismic velocities are highly variable, however, for a gabbroic crust, velocities are typically between 6.7 km/s and 7.2 km/s (Grevenmeyer et al., 2018; Christeson et al., 2019). The histogram in Figure ~~5e 4f~~ shows a gap for this range of velocities suggesting that no typical oceanic crust and no thick layer of gabbroic rocks ~~are is~~ present along the profile. In any case, the lack of seismic velocities expected for oceanic crust does not support the
260 occurrence of larger units of oceanic crust as observed in the Tyrrhenian Sea (Prada et al., 2014).

Continental crust is characterised by a low seismic velocity gradient throughout the crystalline crustal layers and shows typical velocities of ~5.8 to ~6.6 km/s (Christensen and Mooney, 1995). We observe this velocity range in the northern half of the profile, starting from profile KM_70, at a depth of 10 km to 13 km (marked with “Y” in Fig. 4a). The observed seismic velocities provide only ~~leave~~ two possible interpretations: (1) hyper-extended continental crust or (2) a laterally isolated magmatic intrusion within the sedimentary units feeding the volcanic extrusion observed in the MCS and Parasound data (Fig. 3c). Based
265 on the gravity model (Fig. 5), we favour the first scenario of extremely thinned continental crust, ~~pinching out which is decreasing in thickness~~ towards the SW, ~~leading and may even lead~~ to exhumed mantle during the rifting phase in the southern ~~half of the profile~~.

The velocity model for the southern half along our refraction profile is well constrained, however, the lower part (9 km to
270 11 km depth), above the Moho, shows higher uncertainty compared to the shallow, sedimentary units. The depth of the crust-mantle boundary is well constrained with an uncertainty range of ± 0.25 km along the southern profile half in contrast to ± 0.75 km along the northern profile half (Fig. 4b). We observe seismic velocities > 5.5 km/s that we interpret as fast syn-rift sediments due to a missing crystalline basement reflection. Alternatively, the change from sediments to the crystalline basement might not be characterised by a high impedance contrast, and thus, not imaged in our refraction seismic data as a
275 strong in amplitude reflection event (compare to Fig. 2) and is expressed in a high uncertainty of the determined CB at the northern profile end (Fig. 4). The MCS line MA24 (Rollet et al., 2002) (Fig. 1, inlay profile 6) records the acoustic basement at ~ 6.5 s two-way traveltime (stwt), while the seafloor occurs at 3.6 stwt (~ 2.7 km below sea surface). By means of a simple time to depth conversion using an average seismic velocity of 4.2 km/s, we estimate a minimum sedimentary thickness of ~ 6.1 km (2.9 stwt), resulting in an acoustic basement depth of ~ 8.8 km, as a most shallow approximation (drawn as a red dotted
280 line in figure 4a). This line roughly fits the 5.5 km/s isoline accounting for a standard deviation of 0.2 km/s (Fig. 4b). For the southern half of our profile, this leaves a maximum continental crustal thickness of 2-2.5 km, thickening northwards.

Based on the refraction seismic data along our profile (southern half) we are not able to distinguish between sediments with high seismic velocities and extremely thinned continental crust. However, we can give a minimum and maximum continental crustal thickness, ranging from 0 km to 2.5 km. Based on the velocity model (Fig. 4a) it is not possible to distinguish whether

285 the crystalline basement ~~there~~ is upper, middle, or lower continental crust. A continental crustal thickening towards the north-east is as well supported by the modelling of the free air anomaly (Fig. 5). Additionally, a thickening crustal layer supports the interpretation as continental crust, since we would expect the COT to be manifested in an abrupt change from oceanic to continental crust or to gradually thin out towards the NE, towards the rotational pole (Rosenbaum et al., 2002), depending on the ~~situation-position~~ of the profile with respect to the proposed spreading axis.

290 An expanding spread profile (ESP) (Le Douaran et al., 1984; Contrucci et al., 2001) crosses the northern end of our profile (Fig. 1, inlay profile 5). There the crust-mantle boundary was defined at a depth of 13-15 km while the acoustic basement was observed at ~9 km depth. Contrucci et al. (2001) retrieved crustal velocities of 6.3 - 6.9 km/s for the basin centre, which in general, is in good agreement with our results. Based on MCS data (LISA01) (Contrucci et al., 2001) with an observed major step in the basement on the Ligurian margin, they interpreted the central basin as an oceanic domain. On the Corsica margin, 295 this major step was not observed; however, magnetic anomalies were used to constrain the interpretation. The MCS data resolve only the sedimentary portion of the crust and ~~give-yield~~ no information on the internal structures of the crystalline basement itself. Thus, a different explanation for the major step in the basement near the Ligurian margin could be that upper-crustal blocks sit on top of continental mantle similar to the Galicia margin (Nagel and Buck, 2004). Our profile only provides information on the basin centre where the absolute velocities of Le Douaran et al. (1984) and Contrucci et al. (2001) fit 300 continental crust velocities very well and support our interpretation of mantle material beneath thinned continental crust observations.

5.23 ~~Low degree of mantle serpentinisation~~ ~~Mantle exhumation and magmatic intrusions~~

~~The velocity model for the southern half along our refraction profile is well constrained (Fig. 5b).~~ Seismic velocities of ~7.3 305 km/s and higher are too fast for magmatic crust (Grevemeyer et al., 2018; Christeson et al., 2019). Seismic velocities of unaltered mantle are >7.8 km/s (Carlson and Miller, 2003; Grevemeyer et al., 2018). Based on the seismic P-wave velocities, we interpret the uppermost mantle to be serpentinised at a low grade, which is supported by the Pn phases that are weak in amplitude at the southern stations (Fig. 2). P-wave velocities of ~7.5 km/s in the south-western half of the profile (Fig. 4a) are in-line with up to ~20% serpentinisation (Carlson and Miller, 2003). From OBS204 to OBS207, the PmP phase is extremely 310 high in amplitude and unusually clearly visible over a wide distance of up to 20 km (in ~10 km to ~30 km offset to the station). This area (profile KM_40-KM_60) is marked by $V_p > 7.8$ km/s directly underneath the basement ("Z" in Fig. 4a), possibly an area of unaltered mantle due to a left over (and possibly rotated) block of continental crust as observed in other magma-poor passive margins (Bayracki et al., 2016) or a result of a mafic intrusion. The fact that the mantle is only partly serpentinised ~~implies-suggests~~ that syn-rift sediments (nowadays showing high P-wave velocities) ~~were-may have been~~ directly deposited 315 on top of the mantle or brittle continental crust (Pérez-Gussinyé, 2013). Thus, structurally, the Ligurian Sea is mimicking the Atlantic non-volcanic passive margins of Iberia (Minshull et al., 2014) and Goban Spur (Bullock and Minshull, 2005).

However, the fast mantle in the Ligurian Sea would support a much lower degree of serpentinisation when compared to the Atlantic margin.

In comparison to the Tyrrhenian Sea, the P-wave velocities of the upper mantle in the Ligurian Sea are high (Fig. 4a). P-wave velocities of the upper mantle in the Tyrrhenian Sea Domain #3 are significantly lower with 4.5 km/s at the top of the mantle (Prada et al., 2016). We observe significant differences between both basins: (1) Along the southern half of our profile we observe strong PmP reflections indicating a high-velocity contrast at the crust-mantle boundary, while in Domain #3 in the Tyrrhenian Sea PmP reflections are absent. (2) The Ligurian Basin has a thick sedimentary cover of ~6-8 km, while the Tyrrhenian Sea Domain #3 shows a sedimentary cover of ~1-2 km (Prada et al., 2014). Further, (3) the Ligurian Basin was stretched ~150 km during the ~16 million year opening phase, while the Tyrrhenian Sea was stretched ~300 km within 9-10 million years. Although the extension in the Ligurian Basin lasted longer and occurred earlier, the sedimentation rate is significantly higher compared to the Tyrrhenian Sea. Syn-rift sedimentation was recorded in MCS data (Fig. 1, inlay profile 3) in the Gulf of Lion (Jolivet et al., 2015). Sediments are known to reduce the permeability and thus, the amount of water that reaches the mantle rocks, necessary for serpentinisation (Ruepke et al., 2013). Two other factors can play a role for the degree of mantle serpentinisation in the Ligurian Basin: Ruepke et al. (2013) show in thermo-tectono-stratigraphic basin models the effects of sedimentary blanketing and low stretching factors on serpentinisation. Hence our seismic velocity model (Fig. 4a) can be well explained if mantle rocks have been partially exhumed from continental crust, without being directly exposed to sea water due to syn-rift sedimentation. However, also the interpretation of extremely thinned brittle continental crust requires syn-rift sedimentation since the stretching might open fluid pathways through the crust down to the mantle (Nagel and Buck, 2004).

5.32 Continent-ocean transition and magmatic intrusions

The MCS line MA24 (Rollet et al., 2002) was shot along an ESP profile consisting of four ~~stations~~ measurements with a spacing of ~35 km (Le Douaran et al., 1984). The two transects are crossing our profile at the southern end (Fig. 1, inlay profile 6).

The MCS data resolve sedimentary units, while the seismic velocities retrieved along the ESP profile show no absolute seismic velocities similar to oceanic crust. Both transects do not map a spreading axis. Further west along the Ligurian margin, a multichannel seismic study (Jolivet et al., 2015) and a wide-angle refraction seismic study (Gailler et al., 2009) of the Ligurian margin (Fig. 1, inlay profiles 2a and 3), in the Gulf of Lion, show a wide continent-ocean transition zone. The travel time tomography model along the OBS profiles (Gailler et al., 2009) images a succession of three domains: (1) continental, (2) transitional, and (3) oceanic ~~domain~~ towards the basin centre, following the zonation of Rollet et al. (2002). The same succession was found for both continental margins, however though, the Corsica margin's transitional zone is much narrower. The transitional domain is interpreted to consist of a mixture of continental crust, exhumed mantle, and magmatic intrusions (Gailler et al., 2009; Rollet et al., 2002). In contrast, Jolivet et al. (2015) interpret the transitional zone as exhumed lower continental crust overlying the continental mantle which is in the distal part exhumed and serpentinised. The exhumation of

350 lower continental crust in the Gulf of Lions is still debated. For example, numerical modelling of continental rifting at the magma-poor Galicia margin showed that the lower crust is scarcely preserved or absent in the continental tip (Nagel and Buck, 2004). Our velocity model at the base of the continental crust is not well enough resolved (Fig. 4b) to distinguish between upper and lower continental crust, but we emphasize again, that we can exclude oceanic crust based on the seismic velocity ~~distribution structure~~ (Fig. 4fe) and the results of gravity modelling (Fig. 5) along our seismic profile. The oceanic domain on 355 both conjugated margins in the Gulf of Lion (Fig. 1, inlay profile 2a) and offshore Sardinia (Fig. 1, inlay profile 2b) was imaged in the travel time tomographic approach with the typical pattern observed at mid-ocean ridges (Gailler et al., 2009), with a high velocity gradient in the upper oceanic crust and a low velocity gradient in the lower crust.

The extension process in the Ligurian Basin stopped roughly 16 Ma and was replaced by the extension and opening of the Tyrrhenian Sea as the Apennines-Calabrian subduction zone continued to roll back. The magnetic data (Bayer et al., 1973; 360 Cella et al., 2008) in both basins show a similar anomaly distribution with discontinuous, partially isolated anomalies. Prada et al. (2014) analysed a seismic refraction profile crossing the Tyrrhenian Sea from Sardinia to Italy mainland. Similar to the Ligurian Basin, the western margin is more elongated than the eastern margin. The ~~y-authors~~ divide the analysed profile into 3 different domains from Sardinia to the central basin: In domain #1 continental crust thins from 22 km to 13 km over a distance of 80 km. Domain #2 is interpreted as magmatic back-arc crust with blocks of continental crust and stretches over a distance 365 of ~80 km on the Corsican side of the basin (Prada et al., 2014). The change from continental to magmatic crust is marked by an abrupt increase of seismic velocities to >7 km/s in the lower crust, similar to the observation of Gailler et al. (2009) on the Ligurian Basin side of Sardinia. Prada et al. (2014) interpret the seismic velocities, which are slightly lower than found in 0-7 Ma old-oceanic crust, to be a result of back-arc spreading close to the active volcanic arc. Domain #3 is interpreted to be composed of serpentinised mantle to a depth of 5-6 km with basaltic intrusions and shows a width of ~140 km. ~~The authors~~ 370 ~~summarise~~ Prada et al., (2014) suggest that rifting in the Central Tyrrhenian Basin started with extension of continental crust, continued with back-arc spreading, followed by ~~nearby~~ mantle exhumation. Later, the area underwent magmatic episodes with magmatic intrusions into the sedimentary layer or cropping out, forming volcanoes. These volcanoes and magmatic intrusions could be related to magnetic anomalies (Prada et al., 2016). Using the Tyrrhenian Sea as an analogy, we suggest that many of the isolated magnetic anomalies in the Ligurian Sea are caused by magmatic intrusions or extrusions manifested as volcanic 375 edifices (Median Seamount, Tristanites Massif, Monte Doria; see Fig. 1) (Rollet et al., 2002), rather than related to a spreading axis, which was indeed not mapped in MCS data so far. However, in MCS data, intrusions of volcanic sills into younger sediments were observed (Finetti et al., 2005). At the Monte Doria Seamount, 11-12 Ma old basalts with a calc-alkaline signature were sampled by dredges and submersible dives (Rollet et al., 2002; Réhault et al., 2012), clearly indicating post-rift magmatism. Further, volcanism related to the slab roll-back of the Apennines-Calabrian subduction zone was observed at the 380 Ligurian continental margin and dated to the initiation of the rifting phase (Rollet et al., 2002). Volcanism was as well associated with the end of the opening of the Ligurian Basin and related to the trench retreat of the Apennines-Calabrian subduction zone (Rollet et al., 2002). This implies that volcanism also occurred during the rifting phase and could add to the discontinuous magnetic anomalies.

385 5.4 Opening of the Ligurian Basin

The opening of the Ligurian Basin in a back-arc position during late Oligocene and early Miocene was driven by the south-east retreating Apennines-Calabria-Maghrebides subduction zone (e.g. Doglioni et al., 1997; Faccenna et al., 1997; Réhault et al., 1984; Carminati et al., 1998). The shift of active expansion from the Ligurian Basin to the Tyrrhenian Sea is considered a result of the Alpine collision that locked the Corsica-Sardinia drift towards the east and slab break-offs along the northern African margin and along the Apennines (Carminati et al., 1998). Thus, the opening of the Ligurian Basin was limited in time and space. Two different conceptual scenarios of rifting could explain our observations: (1) Rifting causing continental crust to thin until continental lower crust and mantle are exhumed and afterwards oceanic spreading is induced as observed in the Gulf of Lion (Gailler et al., 2009; Jolivet et al., 2015). (2) Rifting causing continental crust to thin until back-arc spreading is initiated and the continuation of extension leads to exhumation of mantle with magmatic intrusions (Prada et al., 2016).

390 Depending on the scenario, our profile is situated in the Ligurian transitional domain #2 or in the Tyrrhenian domain #3. Rifting scenario (2) would imply that well developed oceanic back-arc crust should occur southeast and northwest of the profile. The transect reaches into the area of a 3D seismic study of the Ligurian margin offshore Sanremo (Dessa et al., 2011). The authors state that they were surprised not to see a distinct change in the velocity field at the COT. Dessa et al. (2011) could not ~~show-find~~ clear evidence for a kind of back-arc crust as shown by Prada et al. (2014) or Gailler et al. (2009). However,

400 continental crustal thinning is well imaged. Considering these aspects, we rather favour rifting scenario (1) which is also supported by the conceptual model described by Decarlis et al. (2017) for the evolution of magma-poor rifted margins. The model includes three phases of extension: (1) An initial stretching phase forming widely distributed half-grabens in the upper crust. Afterwards (2) a thinning phase leads to hyper-extended crust and is followed by (3) an exhumation phase during which subcontinental mantle rocks were exhumed.

405 Furthermore, the Ligurian Basin width in our study area (70 - 120 km) is much narrower than further south (~200 km) where domain #2 is ~~summing-cumulating up~~ to ~100 km in length for both conjugated margins together, ~~which -This~~ would entirely fill the basin in our study area, leaving little or no space for oceanic spreading. This is i.e. supported by petrological and geophysical observations at the West Iberia margin, that suggest that a COT zone can reach a width of up to 200 km (Pérez-Gussinyé, 2013).

410 Additionally, the opening rate becomes slower towards the north and the amount of stretching becomes less, which is probably caused by the anti-clockwise rotation of the Corsica-Sardinia block. Stretching of the crust as a result of the opening of the basin becomes less intense towards the north and thus controls the NE termination of the ultra-thin continental crust. Further, the extension of the basin decreases towards the north and assuming oceanic crust to be present, the crust should become less thick towards the proposed ridge axis tip. However, our seismic data and gravity data indicate a gradual thickening of the

415 crystalline crust, at least a gradual deepening of the mantle, indicating thickening continental crust northwards. This is as well supported by the magnetic data (Bayer et al., 1973), which do not show the typical oceanic crust pattern of magnetisation

~~stripes, but rather a lateral patchy pattern of magmatic domains.~~ This could imply that oceanic spreading was not initiated during the Oligocene-Miocene extension in the northern Ligurian Basin, along ~~the southern half of our seismic~~ line. Continuing further north, extension ~~leads led~~ to extreme thinning of continental crust, but lasted not long enough to exhume mantle.

420

6 Conclusion

The P-wave velocity model determined in this study images the uppermost lithospheric structure of the ~~north-eastern~~ central Ligurian Basin. Syn- and post-rift sediments of ~~7.5~6~~ 8 km thickness filled the basin during and after the 15 Ma long lasting opening phase. ~~The~~ Based on the image of the seismic velocity distribution along the southern half of the profile ~~shows it~~ remains enigmatic if the mantle is overlain directly by sediments or by extremely thinned continental crust of up to 2.5 km. ~~contact between sediments and-~~ The degree of mantle serpentinisation ~~with up to 20% is low., while t~~ The northern half of the profile indicates a northward thickening of continental crust and a deepening crust-mantle boundary from 11 km to 13 km. Based on the retrieved velocity distribution, gravity modelling and results of surrounding studies, we conclude that the extension of the Ligurian Basin led to:

425

430

- (1) ~~hyper-e~~ Extended and very thin continental crust ~~and or~~ exhumed, partially serpentinised mantle ~~and~~
- (2) ~~a-e~~ Continental crustal thinning from north to south related to the increase of extension with increasing distance from the rotation pole of the anti-clockwise rotation of the Corsica-Sardinia block. ~~Further,~~ Furthermore, our study documents that:
- (3) ~~s~~ Seafloor spreading and formation of mantle-derived oceanic crust was not initiated during the extension of the Ligurian Basin.

435

Thus, we ~~assume-conclude~~ that the oceanic domain does not extend as far north as previously stated and that the transition from the continental domain and the real oceanic domain with a potential spreading axis is situated south or south-west, however, nearby our seismic line.

440

Data availability. Seismic data are available on request from the first or second author and ~~will be made~~ are available via the German marine data archive PANGAEA ~~upon acceptance of the manuscript~~ at <https://doi.org/10.1594/PANGAEA.910561>.

Competing interests. The authors declare that they have no conflict of interest.

445

Acknowledgements. This project is funded by Deutsche Forschungsgemeinschaft (DFG), grant number KO_2961/6-1. We thank captain and crew of RV Maria S. Merian cruise MSM71 for their support during the OBS work. We thank the MSM71 cruise participants for their effort. The LOBSTER project comprises the offshore component of the AlpArray seismic network

(Hetényi et al., 2018) and is part of the German priority program SPP2017 4D-MB. Generic Mapping Tools (Wessel & Smith, 1998) were used to produce the figures. [We thank the reviewers L. Jolivet, J.-X. Dessa, and M. Prada for their fruitful comments.](#)

450 **References**

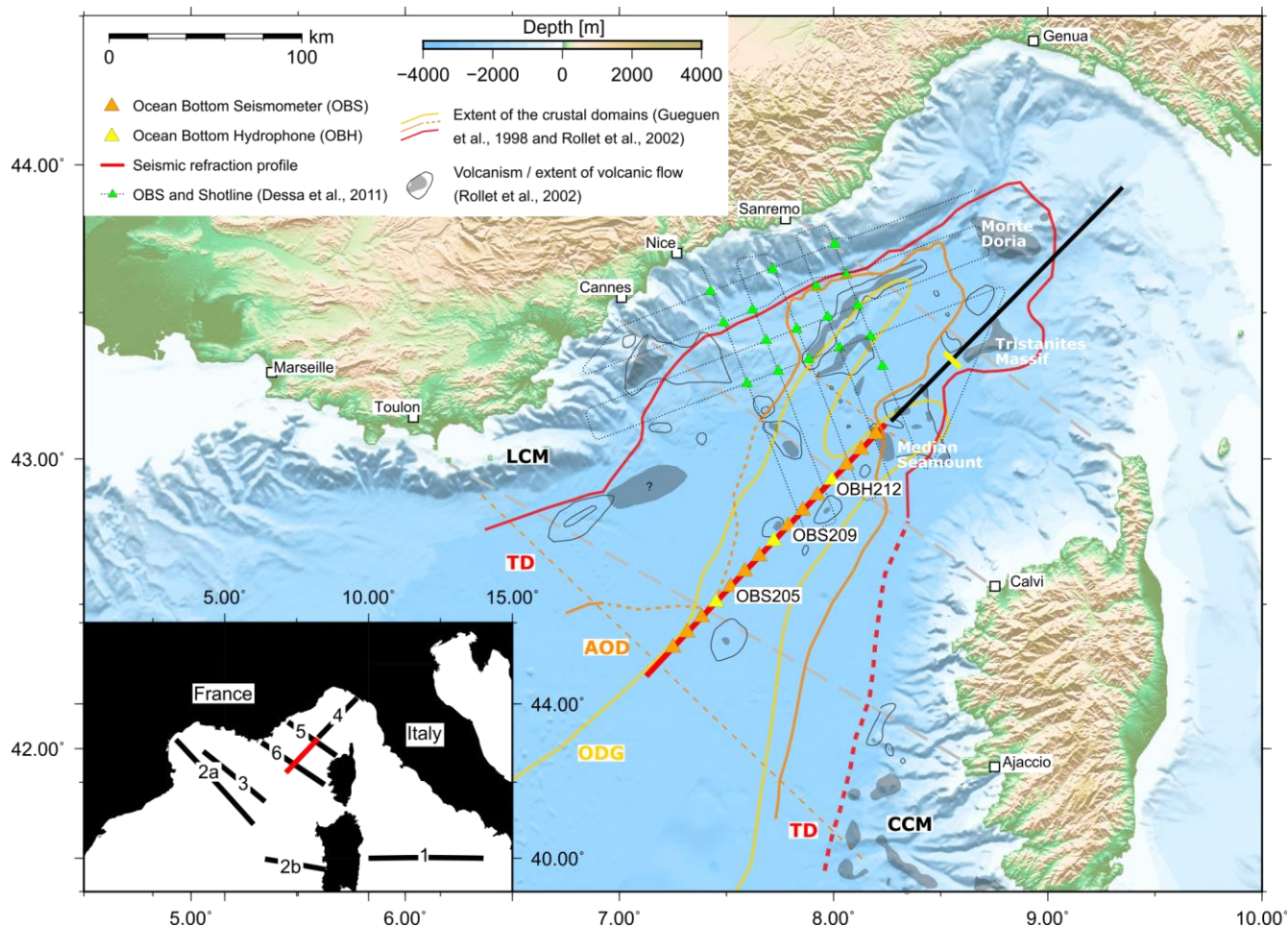
- Advokaat, E. L., van Hinsbergen, D. J. J., Maffione, M., Langereis, C. G., Vissers, R. L. M., Cherchi, A., Schroeder, R., Madani, H. and Columbu, S.: Eocene rotation of Sardinia, and the paleogeography of the western Mediterranean region, *Earth Planet. Sci. Lett.*, 401, 183–195, doi:10.1016/j.epsl.2014.06.012, 2014.
- [Bayrakci, G., Minshull, T.A., Sawyer, D.S., Reston, T. J., Klaeschen, D., Papenberg, C., Ranero, C., Bull, J. M., Davy, R. G., Shillington, D. J., Perez-Gussinye, M., and Morgan, J. K.: Fault-controlled hydration of the upper mantle during continental rifting, *Nature Geoscience*, doi: 10.1038/NGEO2671, 2016.](#)
- 455 [Bayer, R., Le Mouel, J. L. and Le Pichon, X.: Magnetic anomaly pattern in the western mediterranean, *Earth Planet. Sci. Lett.*, 19\(2\), 168–176, doi:10.1016/0012-821X\(73\)90111-8, 1973.](#)
- Béthoux, N., Tric, E., Chery, J. and Beslier, M.-O.: Why is the Ligurian Basin (Mediterranean Sea) seismogenic?
- 460 Thermomechanical modeling of a reactivated passive margin: MODELING OF THE LIGURIAN BASIN, *Tectonics*, 27(5), doi:10.1029/2007TC002232, 2008.
- Bonatti, E., Seyler, M., Channell, J., Giraudeau, J. and Mascle, G., Eds.: Peridotites drilled from the Tyrrhenian Sea, ODP Leg 107, Ocean Drilling Program 107, 1990.
- Bullock, A. and Minshull, T.: From continental extension to seafloor spreading: Crustal structure of the Goban Spur rifted margin, southwest of the UK, *Geophys. J. Int.*, 163, 527–546, doi: 10.1111/j.1365-246X.2005.02726.x, 2005.
- 465 Burrus, J.: Contribution to a geodynamic synthesis of the Provencal Basin (NorthWestern Mediterranean), *Mar. Geol.*, 55(3–4), 247–269, [https://doi.org/10.1016/0025-3227\(84\)90071-9](https://doi.org/10.1016/0025-3227(84)90071-9), 1984.
- Carlson, R. L. and Miller, D. J.: Mantle wedge water contents estimated from seismic velocities in partially serpentinized peridotites: MANTLE WEDGE WATER CONTENTS, *Geophys. Res. Lett.*, 30(5), doi:10.1029/2002GL016600, 2003.
- 470 [Carminati et al., 1998, Carminati, E., Wortel, M.J.R., Meijer, P.T., and Sabadini, R.: The two-stage opening of the western-central mediterranean basins: a forward modeling test to a new evolutionary model, *Earth Planet. Sci. Lett.*, 160, pp. 667-679, doi:10.1016/S0012-821X\(98\)00118-6, 1998.](#)
- Cella, F., Fedi, M., Florio, G., Paoletti, V. and Rapolla, A.: A review of the gravity and magnetic studies in the Tyrrhenian Basin and its volcanic districts, [23*Annals of Geophysics*, 51, doi:10.4401/ag-3035](#), 2008.
- 475 Chamot-Rooke, N., Jestin, F. and Gaulier, J.-M.: Constraints on Moho Depth and Crustal Thickness in the Liguro-Provençal Basin from a 3d Gravity Inversion: Geodynamic Implications, *Rev. Inst. FRANCAIS Pet.*, 52, 557–583, doi:10.2516/ogst:1997060, 1997.
- Christensen, N. I. and Mooney, W. D.: Seismic velocity structure and composition of the continental crust: A global view, *J. Geophys. Res. Solid Earth*, 100(B6), 9761–9788, doi:10.1029/95JB00259, 1995.

- 480 Christeson, G. L., Goff, J. A. and Reece, R. S.: Synthesis of Oceanic Crustal Structure From Two-Dimensional Seismic Profiles, *Rev. Geophys.*, 57(2), 504–529, doi:10.1029/2019RG000641, 2019.
- Contrucci, I., Nercessian, A., Béthoux, N., Mauffret, A. and Pascal, G.: A Ligurian (Western Mediterranean Sea) geophysical transect revisited, *Geophys. J. Int.*, 74–97, 2001.
- Decarlis, A., Beltrando, M., Manatschal, G., Ferrando, S. and Carosi, R.: Architecture of the Distal Piedmont-Ligurian Rifted Margin in NW Italy: Hints for a Flip of the Rift System Polarity, *Tectonics*, 36(11), 2388–2406, doi:10.1002/2017TC004561, 485 2017.
- Dercourt, J., Zonenshain, L. P., Ricou, L.-E., Kazmin, V. G., Le Pichon, X., Knipper, A. L., Grandjacquet, C., Sbertshikov, I. M., Geysant, J., Lepvrier, C., Pechersky, D. H., Boulin, J., Sibuet, J.-C., Savostin, L. A., Sorokhtin, O., Westphal, M., Bazhenov, M. L., Lauer, J. P. and Biju-Duval, B.: Geological evolution of the tethys belt from the atlantic to the pamirs since 490 the LIAS, *Tectonophysics*, 123(1–4), 241–315, doi:10.1016/0040-1951(86)90199-X, 1986.
- Dessa, J.-X., Simon, S., Lelievre, M., Beslier, M.-O., Deschamps, A., Bethoux, N., Solarino, S., Sage, F., Eva, E., Ferretti, G., Bellier, O. and Eva, C.: The GROSMarin experiment: three dimensional crustal structure of the North Ligurian margin from refraction tomography and preliminary analysis of microseismic measurements, *Bull. Soc. Geol. Fr.*, 182(4), 305–321, doi:10.2113/gssgfbull.182.4.305, 2011.
- 495 Doglioni, C., Gueguen, E., Sàbat, F. and Fernandez, M.: The Western Mediterranean extensional basins and the Alpine orogen, *Terra Nova*, 9(3), 109–112, doi:10.1046/j.1365-3121.1997.d01-18.x, 1997.
- Faccenna, C., Mattei, M., Funiciello, R. and Jolivet, L.: Styles of back-arc extension in the Central Mediterranean, *Terra Nova*, 9(3), 126–130, doi:10.1046/j.1365-3121.1997.d01-12.x, 1997.
- Faccenna, C., Funiciello, F., Giardini, D. and Lucente, P.: Episodic back-arc extension during restricted mantle convection in 500 the Central Mediterranean, *Earth Planet. Sci. Lett.*, 187(1–2), 105–116, doi:10.1016/S0012-821X(01)00280-1, 2001.
- Fernàndez, M., Foucher, J. P. and Jurado, M. J.: Evidence for the multi-stage formation of the south-western Valencia Trough, *Mar. Pet. Geol.*, 12(1), 101–109, doi:10.1016/0264-8172(95)90390-6, 1995.
- Finetti, I. R., Boccaletti, M., Bonini, M., Ben, A., Pipan, M., Prizzon, A. and Sani, F.: Lithospheric Tectono-Stratigraphic Setting of the Ligurian Sea–Northern Apennines–Adriatic Foreland from Integrated CROP Seismic Data, in *Deep Seismic 505 Exploration of the Central Mediterranean and Italy, CROP PROJECT*, pp. 119–158., 2005.
- Fujie, G., Kasahara, J., Murase, K., Mochizuki, K. and Kaneda, Y.: Interactive analysis tools for the wide-angle seismic data for crustal structure study (Technical Report), *Explor. Geophys. - EXPLOR GEOPHYS*, 39, doi:10.1071/EG08006, 2008.
- Gailler, A., Klingelhoefer, F., Olivet, J.-L. and Aslanian, D.: Crustal structure of a young margin pair: New results across the Liguro–Provencal Basin from wide-angle seismic tomography, *Earth Planet. Sci. Lett.*, 286(1–2), 333–345, 510 doi:10.1016/j.epsl.2009.07.001, 2009.
- Gardner, G. H. F., Gardner, L. W. and Gregory, A. R.: FORMATION VELOCITY AND DENSITY—THE DIAGNOSTIC BASICS FOR STRATIGRAPHIC TRAPS, *GEOPHYSICS*, 39(6), 770–780, doi:10.1190/1.1440465, 1974.

- Grevemeyer, I., Ranero, C. R. and Ivandic, M.: Structure of oceanic crust and serpentinization at subduction trenches, *Geosphere*, 14(2), 395–418, doi:10.1130/GES01537.1, 2018.
- 515 Gueguen, E., Doglioni, C. and Fernandez, M.: On the post-25 Ma geodynamic evolution of the western Mediterranean, *Tectonophysics*, 298(1–3), 259–269, doi:10.1016/S0040-1951(98)00189-9, 1998.
- Guerin, G., Rivet, D., Deschamps, A., Larroque, C., Mordret, A., Dessa, J.-X. and Martin, X.: High resolution ambient noise tomography of the South-Western Alps and the Ligurian margin, *Geophys. J. Int.*, doi:10.1093/gji/ggz477, 2019.
- Handy, M. R., M. Schmid, S., Bousquet, R., Kissling, E. and Bernoulli, D.: Reconciling plate-tectonic reconstructions of
520 Alpine Tethys with the geological–geophysical record of spreading and subduction in the Alps, *Earth-Sci. Rev.*, 102(3–4), 121–158, doi:10.1016/j.earscirev.2010.06.002, 2010.
- Hetényi, G., Molinari, I., Clinton, J., Bokelmann, G., Bondár, I., Crawford, W. C., Dessa, J.-X., Doubre, C., Friederich, W., Fuchs, F., Giardini, D., Gráczér, Z., Handy, M. R., Herak, M., Jia, Y., Kissling, E., Kopp, H., Korn, M., Margheriti, L., Meier, T., Mucciarelli, M., Paul, A., Pesaresi, D., Piromallo, C., Plenefisch, T., Plomerová, J., Ritter, J., Rümpker, G., Šipka, V.,
525 Spallarossa, D., Thomas, C., Tilmann, F., Wassermann, J., Weber, M., Wéber, Z., Wesztergom, V., Živčić, M., Abreu, R., Allegretti, I., Apoloner, M.-T., Aubert, C., Besançon, S., Bès de Berc, M., Brunel, D., Capello, M., Čarman, M., Cavaliere, A., Chèze, J., Chiarabba, C., Cougoulat, G., Cristiano, L., Czifra, T., D’Alema, E., Danesi, S., Daniel, R., Dannowski, A., Dasović, I., Deschamps, A., Egdorf, S., Fiket, T., Fischer, K., Funke, S., Govoni, A., Gröschl, G., Heimers, S., Heit, B., Herak, D., Huber, J., Jarić, D., Jedlička, P., Jund, H., Klingen, S., Klotz, B., Kolínský, P., Kotek, J., Kühne, L., Kuk, K., Lange, D.,
530 Loos, J., Lovati, S., Malengros, D., Maron, C., Martin, X., Massa, M., Mazzarini, F., Métral, L., Moretti, M., Munzarová, H., Nardi, A., Pahor, J., Péquegnat, C., Petersen, F., Piccinini, D., Pondrelli, S., Prevolnik, S., Racine, R., Régnier, M., Reiss, M., Salimbeni, S., et al.: The AlpArray Seismic Network: A Large-Scale European Experiment to Image the Alpine Orogen, *Surv. Geophys.*, 39(5), 1009–1033, doi:10.1007/s10712-018-9472-4, 2018.
- Jolivet, L. and Faccenna, C.: Mediterranean extension and the Africa-Eurasia collision, *Tectonics*, 19(6), 1095–1106,
535 doi:10.1029/2000TC900018, 2000.
- Jolivet, L., Gorini, C., Smit, J. and Leroy, S.: Continental breakup and the dynamics of rifting in back-arc basins: The Gulf of Lion margin: Backarc rift and lower crust extraction, *Tectonics*, 34(4), 662–679, doi:10.1002/2014TC003570, 2015.
- Kopp, H., Lange, D., Thorwart, M., Paul, A., Dannowski, A., Petersen, F., Aubert, C., Beeck, F., Beniést, A., Besançon, S., Brotzer, A., Caielli, G., Crawford, W., Deen, M., Lehmann, C., Marquardt, K., Neckel, M., Papanagnou, L., Schramm, B.,
540 Schröder, P., Steffen, K.-P., Wolf, F., Xia, Y.: RV MARIA S. MERIAN Fahrtbericht / Cruise Report MSM71 LOBSTER: Ligurian Ocean Bottom Seismology and Tectonics Research, Las Palmas (Spain) – Heraklion (Greece) 07.02.-27.02.2018. GEOMAR Report, N. Ser. 041-. GEOMAR Helmholtz-Zentrum für Ozeanforschung Kiel, Kiel, Germany, 47 pp, doi: 10.3289/GEOMAR_REP_NS_41_2018-, 2018.
- Korenaga, J., Holbrook, W. S., Kent, G. M., Kelemen, P. B., Detrick, R. S., Larsen, H.-C., Hopper, J. R. and Dahl-Jensen, T.:
545 Crustal structure of the southeast Greenland margin from joint refraction and reflection seismic tomography, *J. Geophys. Res. Solid Earth*, 105(B9), 21591–21614, doi:10.1029/2000JB900188, 2000.

- Korenaga, J., Holbrook, W. S., Detrick, R. S. and Kelemen, P. B.: Gravity anomalies and crustal structure at the southeast Greenland margin, *J. Geophys. Res. Solid Earth*, 106(B5), 8853–8870, doi:10.1029/2000JB900416, 2001.
- Le Douaran, S., Burrus, J. and Avedik, F.: Deep structure of the north-western Mediterranean Basin: Results of a two-ship seismic survey, *Mar. Geol.*, 55(3–4), 325–345, doi:10.1016/0025-3227(84)90075-6, 1984.
- Makris, J., Egloff, F., Nicolich, R. and Rihm, R.: Crustal structure from the Ligurian Sea to the Northern Apennines — a wide angle seismic transect, *Tectonophysics*, 301(3–4), 305–319, doi:10.1016/S0040-1951(98)00225-X, 1999.
- Mauffret, A., Pascal, G., Maillard, A. and Gorini, C.: Tectonics and deep structure of the north-western Mediterranean Basin, *Mar. Pet. Geol.*, 12(6), 645–666, doi:10.1016/0264-8172(95)98090-R, 1995.
- 555 [Meléndez, A., Sallarès, V., Ranero, C.R., and Kormann, J.: Origin of water layer multiple phases with anomalously high amplitude in near-seafloor wide-angle seismic recordings, *Geophys. J. Int.*, 196, 243-252, doi:10.1093/gji/ggt391, 2014.](#)
- Minshull, T. A., Dean, S. M. and Whitmarsh, R. B.: The peridotite ridge province in the southern Iberia Abyssal Plain: Seismic constraints revisited, *J. Geophys. Res. Solid Earth*, 119(3), 1580–1598, doi:10.1002/2014JB011011, 2014.
- Moeller, S., Grevemeyer, I., Ranero, C. R., Berndt, C., Klaeschen, D., Sallares, V., Zitellini, N. and de Franco, R.: Early-stage rifting of the northern Tyrrhenian Sea Basin: Results from a combined wide-angle and multichannel seismic study: Rifting Tyrrhenian, *Geochem. Geophys. Geosystems*, 14(8), 3032–3052, doi:10.1002/ggge.20180, 2013.
- 560 Montigny, R., Edel, J. B. and Thuizat, R.: Oligo-Miocene rotation of Sardinia: KAr ages and paleomagnetic data of Tertiary volcanics, *Earth Planet. Sci. Lett.*, 54(2), 261–271, doi:10.1016/0012-821X(81)90009-1, 1981.
- Nagel, T. J. and Buck, W. R.: Symmetric alternative to asymmetric rifting models, *Geology*, 32(11), 937, doi:10.1130/G20785.1, 2004.
- 565 Pascal, G. P., Mauffret, A. and Patriat, P.: The ocean-continent boundary in the Gulf of Lion from analysis of expanding spread profiles and gravity modelling, *Geophys. J. Int.*, 113(3), 701–726, doi:10.1111/j.1365-246X.1993.tb04662.x, 1993.
- Pérez-Gussinyé, M.: A tectonic model for hyperextension at magma-poor rifted margins: an example from the West Iberia–Newfoundland conjugate margins, *Geol. Soc. Lond. Spec. Publ.*, 369(1), 403–427, doi:10.1144/SP369.19, 2013.
- 570 Prada, M., Sallares, V., Ranero, C. R., Vendrell, M. G., Grevemeyer, I., Zitellini, N. and de Franco, R.: Seismic structure of the Central Tyrrhenian basin: Geophysical constraints on the nature of the main crustal domains: CRUSTAL AFFINITY OF THE TYRRHENIAN BASIN, *J. Geophys. Res. Solid Earth*, 119(1), 52–70, doi:10.1002/2013JB010527, 2014.
- Prada, M., Ranero, C. R., Sallarès, V., Zitellini, N. and Grevemeyer, I.: Mantle exhumation and sequence of magmatic events in the Magnaghi–Vavilov Basin (Central Tyrrhenian, Italy): New constraints from geological and geophysical observations, *Tectonophysics*, 689, 133–142, doi:10.1016/j.tecto.2016.01.041, 2016.
- 575 Réhault, J.-P. and Bethoux, N.: Earthquake relocation in the Ligurian Sea (western Mediterranean): Geological interpretation, *Mar. Geol.*, 55(3), 429–445, doi:10.1016/0025-3227(84)90080-X, 1984.
- Réhault, J.-P., Boillot, G. and Mauffret, A.: The Western Mediterranean Basin geological evolution, *Mar. Geol.*, 55(3), 447–477, doi:10.1016/0025-3227(84)90081-1, 1984.

- 580 Réhault, J.-P., Honthaas, C., Guennoc, P., Bellon, H., Ruffet, G., Cotten, J., Sosson, M. and Maury, R. C.: Offshore Oligo-Miocene volcanic fields within the Corsica-Liguria Basin: Magmatic diversity and slab evolution in the western Mediterranean Sea, *J. Geodyn.*, 58, 73–95, doi:10.1016/j.jog.2012.02.003, 2012.
- Roca, E. and Desegaulx, P.: Analysis of the geological evolution and vertical movements in the València Trough area, western Mediterranean, *Mar. Pet. Geol.*, 9(2), 167–185, doi:10.1016/0264-8172(92)90089-W, 1992.
- 585 Rollet, N., Déverchère, J., Beslier, M.-O., Guennoc, P., Réhault, J.-P., Sosson, M. and Truffert, C.: Back arc extension, tectonic inheritance, and volcanism in the Ligurian Sea, Western Mediterranean: LIGURIAN SEA BACK ARC STRUCTURE AND EVOLUTION, *Tectonics*, 21(3), 6-1-6–23, doi:10.1029/2001TC900027, 2002.
- Rosenbaum, G., Lister, G. and Duboz, C.: Reconstruction of the tectonic evolution of the Western Mediterranean since the Oligocene, *J. Virtual Explor.*, 8, 107–130, doi:10.3809/jvirtex.2002.00053, 2002.
- 590 Ruepke, L.H., Schmid, D.W., Perez-Gussinye, M., and Hartz, E.: Interrelation between rifting, faulting, sedimentation, and mantle serpentinization during continental margin formation—including examples from the Norwegian Sea, *Geochem. Geophys. Geosyst.* 14, doi: 10.1002/ggge.20268, 2013.
- Sandwell, D. T., Müller, R. D., Smith, W. H. F., Garcia, E. and Francis, R.: New global marine gravity model from CryoSat-2 and Jason-1 reveals buried tectonic structure, *Science*, 346(6205), 65, doi:10.1126/science.1258213, 2014.
- 595 Speranza, F., Villa, I. M., Sagnotti, L., Florindo, F., Cosentino, D., Cipollari, P. and Mattei, M.: Age of the Corsica–Sardinia rotation and Liguro–Provençal Basin spreading: new paleomagnetic and Ar/Ar evidence, *Tectonophysics*, 347(4), 231–251, doi:10.1016/S0040-1951(02)00031-8, 2002.
- Talwani, M., Worzel, J. L. and Landisman, M.: Rapid gravity computations for two-dimensional bodies with application to the Mendocino submarine fracture zone, *J. Geophys. Res.* 1896-1977, 64(1), 49–59, doi:10.1029/JZ064i001p00049, 1959.
- 600 Vigliotti, L. and Langenheim, V. E.: When did Sardinia stop rotating? New palaeomagnetic results, *Terra Nova*, 7(4), 424–435, doi:10.1111/j.1365-3121.1995.tb00538.x, 1995.
- Wessel, P., & Smith, W. H. F.: New improved version of the generic mapping tools released. *Eos, Transactions American Geophysical Union*, 79(47), 579, <https://doi.org/10.1029/98EO00426>, 1998.
- White, R. S., McKenzie, D. and O’Nions, R. K.: Oceanic crustal thickness from seismic measurements and rare earth element
605 inversions, *J. Geophys. Res.*, 97(B13), 19683, doi:10.1029/92JB01749, 1992.
- Zelt, C. A.: Modelling strategies and model assessment for wide-angle seismic travelttime data, *Geophys. J. Int.*, 139(1), 183–204, doi:10.1046/j.1365-246X.1999.00934.x, 1999.



610 Figure 1: Map of the study area with the seismic refraction line (thick red line) and OBH/OBS locations that extend the MAKRIS
profile (thick long black line) (Makris et al., 1999). Thin black lines-polygons and grey shaded areas mark volcanic extrusion after
615 Rollet et al. (2002). The different crustal domains (Rollet et al., 2002) are marked by thin orange and red lines and are labeled
with: AOC-AOD - atypical oceanic crust domain, CCM - Corsica continental margin, LCM - Ligurian continental margin, TD -
transitional domain. A thin yellow line marks the oceanic domain (ODG) after Gueguen et al. (1998). Thin red dashed lines show
620 proposed fracture zones (Rollet et al., 2002). Short thick yellow bar perpendicular to the MAKRIS profile marks the continent-
ocean transition (COT) (Makris et al., 1999). Green triangles and thin dotted black lines are the OBS locations and shot profiles of
Dessa et al. (2011). The black and white inset in the lower left corner show previous seismic refraction and reflection lines: 1 - Prada
et al. (2014), 2a/2b - Gailler et al. (2009), 3 - Jolivet et al. (2015), 4 - Makris et al. (1999), 5 - Contrucci et al. (2001), 6 - MA24 from
Rollet et al. (2002).

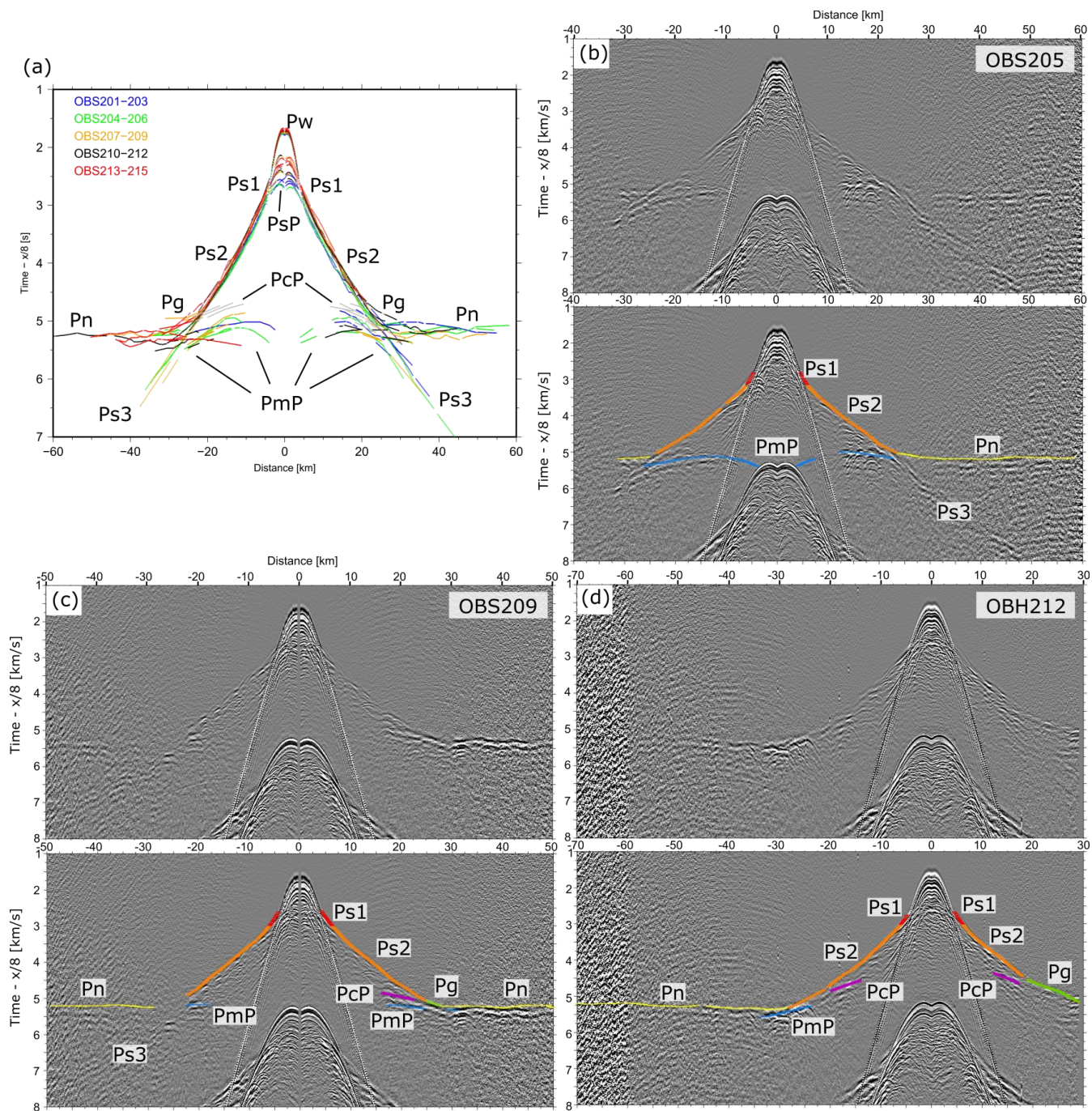


Figure 2: (a) Stacked travel time picks of all 15 stations showing very similar arrivals suggesting an almost 1D structure along the profile. (b) Record section of station OBS205 (time reduced with a velocity of 8 km/s). The lower panel shows the calculated travel time picks from the final velocity model superimposed on the seismic data. (c) Record section and calculated travel times of station OBS209 (d) Record section and calculated travel times of station OBH212.

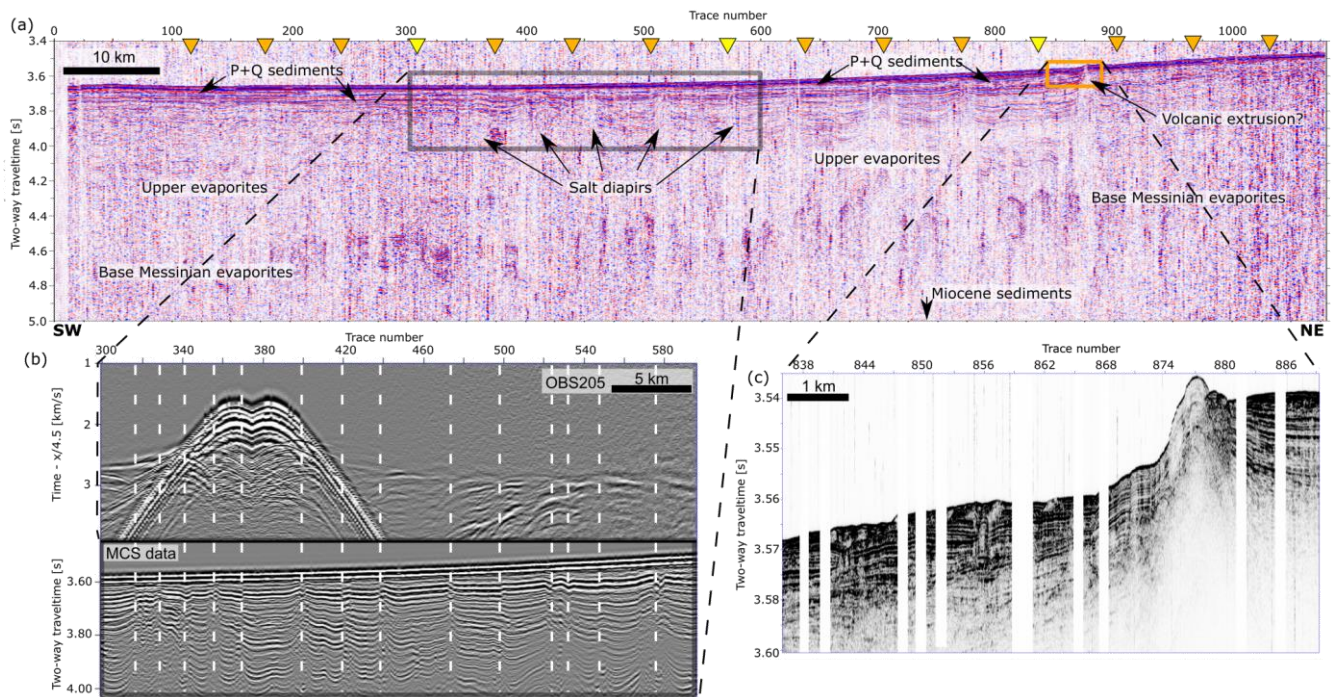
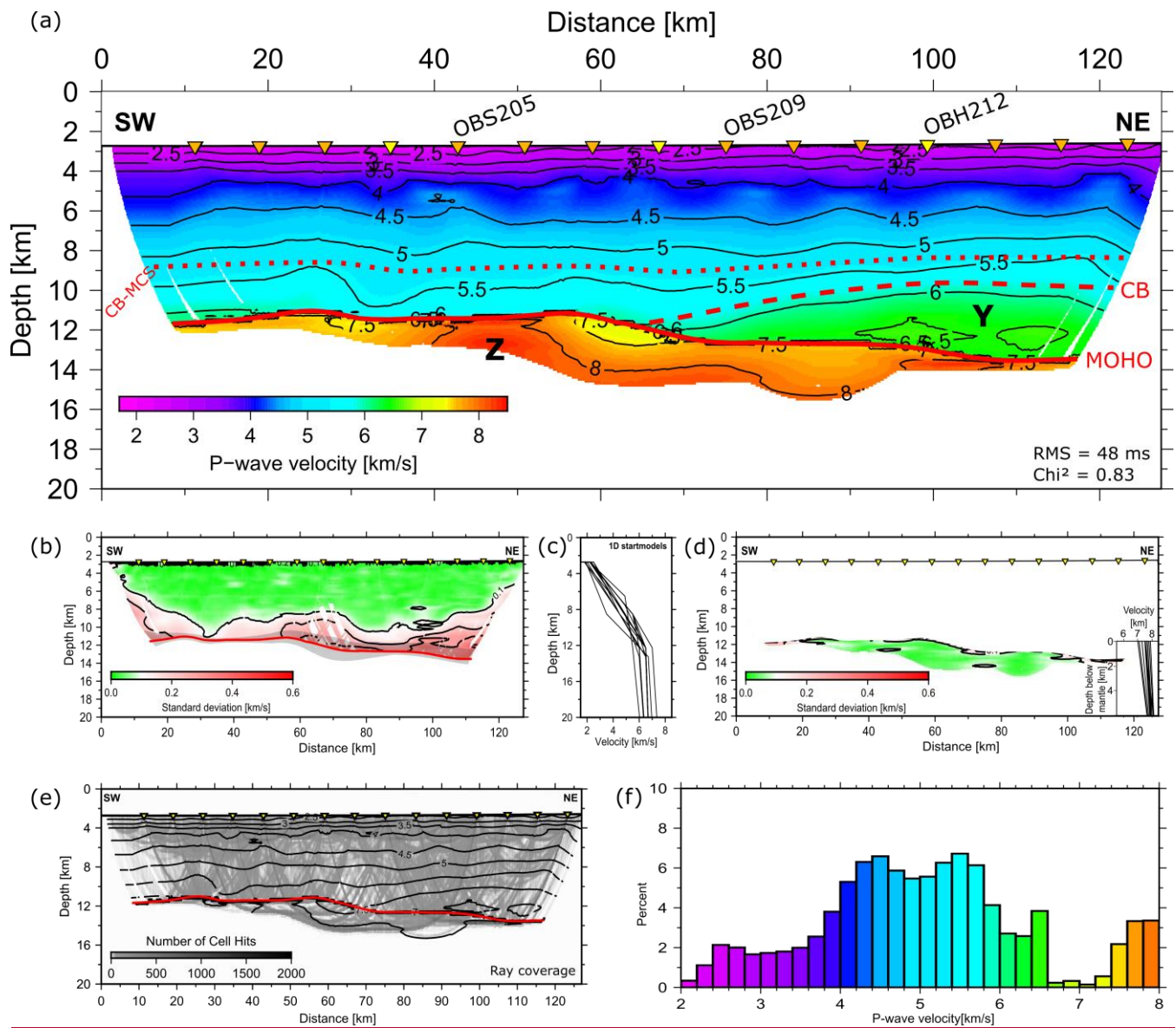


Figure 3: (a) Multi-channel seismic data (MCS data) simultaneously shot with the refraction seismic line. The orange/yellow triangles mark the OBS/OBH positions along the profile. (b) Upper panel shows OBS205 from shot point 300 to shot point 600 with a reduction velocity of 4.5 km/s. The lower panel is a zoom into the MCS section (black box in a). The white lines show that the undulations in the sedimentary phases fit well with faults and salt diapirs. (c) Parasound sediment echo sounder data from the (orange box in 3a) shown in the lower panel.

630



635 **Figure 4: (a) Final velocity model based on the averaged velocities from the plausible starting models. The red dashed line marks the crystalline basement (CB) as determined from the refraction seismic data. The red dotted line presents the CB inferred from MCS data (CB-MCS) crossing our profile (details given in the text). The solid red line marks the crust-mantle boundary (Moho); (b) Standard deviation for 17 inverted velocity models, covering the crustal part down to the Moho; (c) Starting models used in the inversion and to calculate the resulting average model in 4a. (d) Standard deviation for 12-14 inverted velocity models (starting models in the inset), covering the upper mantle up to the Moho; (e) Ray coverage for the final average velocity model; (f) Histogram with the velocity distribution of the final average velocity model.**

640

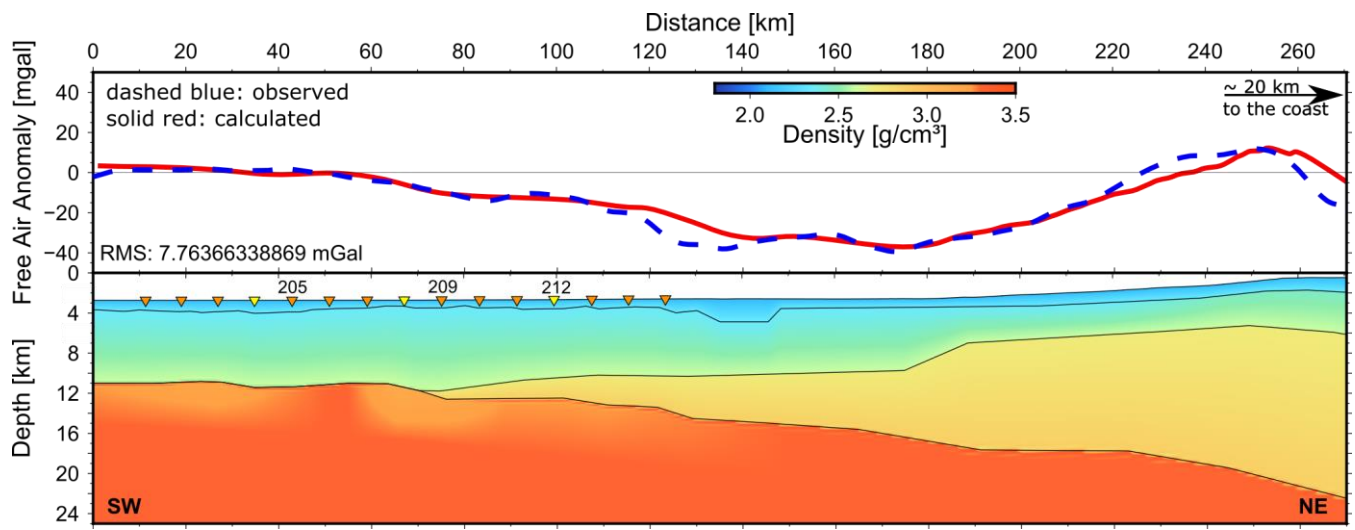


Figure 5: **Figure 5**— Density model (lower panel) converted from seismic velocities to densities (details given in the text) for the SW part covered by seismic stations. The profile was extended towards the NE using the marine part of the seismic refraction line of Makris et al. (1999). The upper panel shows the data fit between the observed-satellite derived free-air anomaly data (Sandwell et al., 2014) (dashed blue) and the model response (solid red line).

645