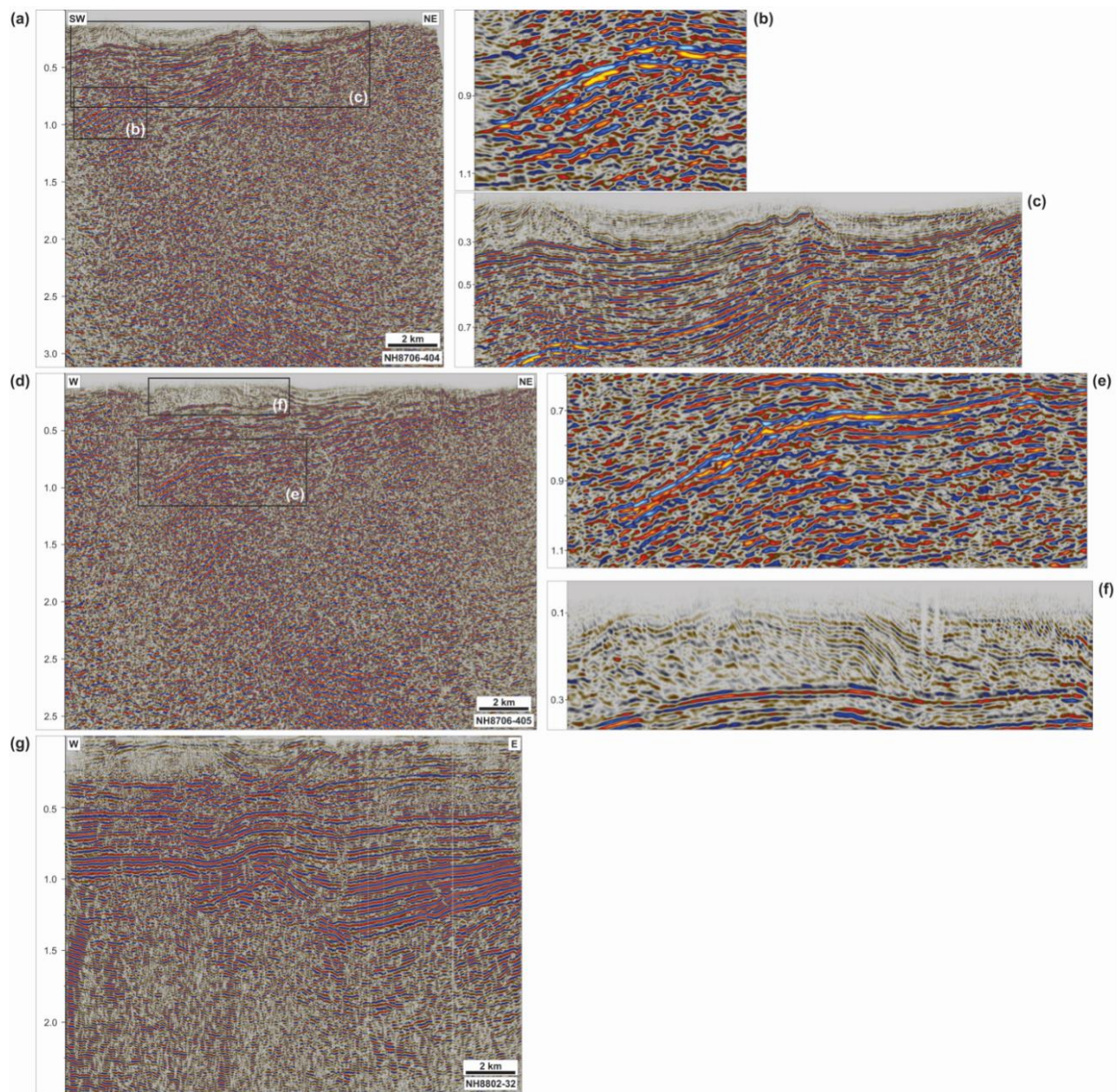
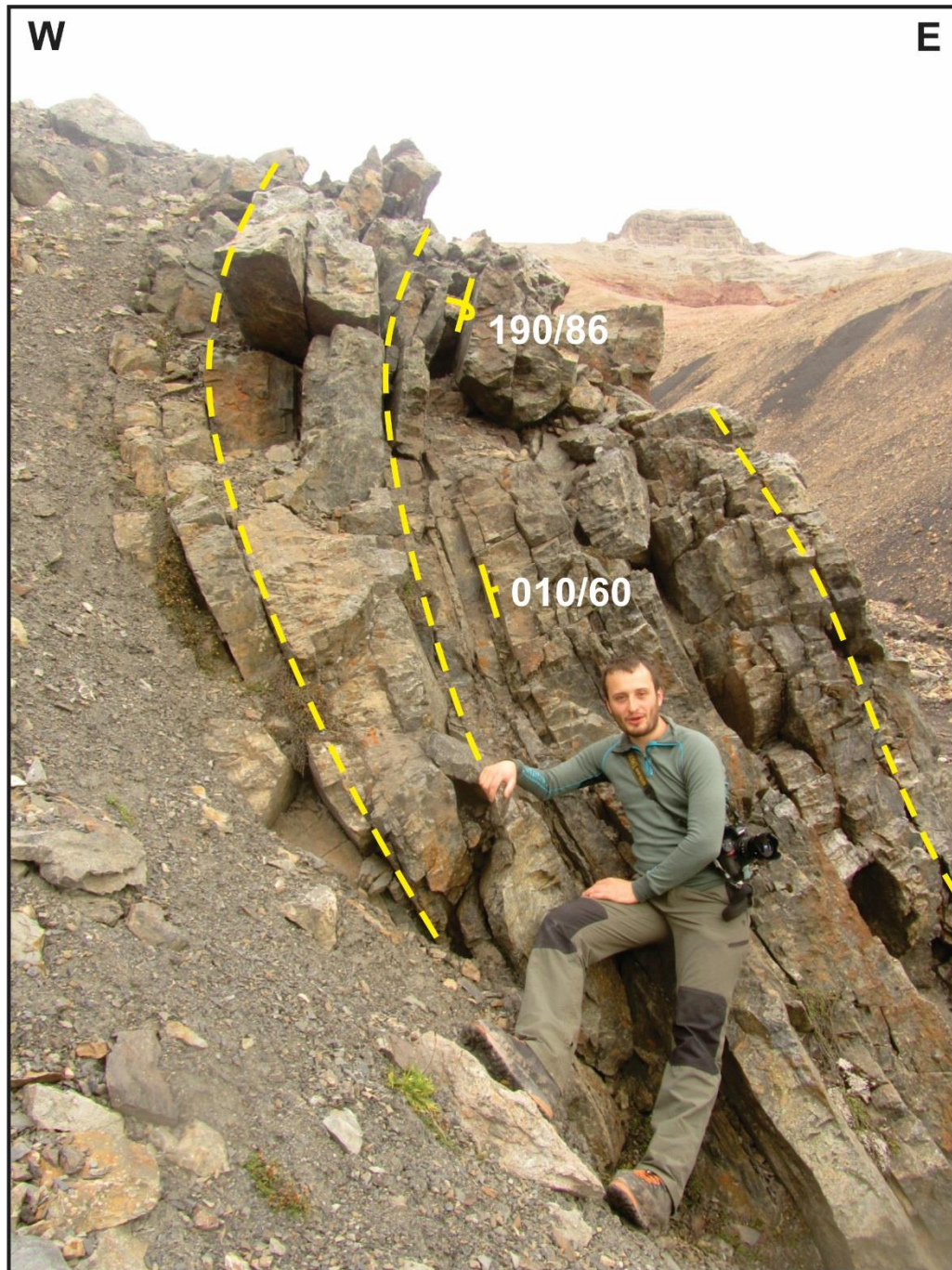


S1: (a) Photographs in non-polarized and (b) polarized light of a thick section in Devonian sandstone including fractured quartz (qz) crosscut by healed fractures (hf) showing no displacement and by quartz-rich cataclastic fault rock filled with calcite cement (upper part); (c) Photographs in non-polarized and (d) polarized light of cataclased Devonian sandstone comprised of quartz crystals showing mild undulose extinction (ue) and grainsize reduction along the subvertical, east-dipping fault in the gully under the coal mine in Pyramiden (Error! Reference source not found.b). Brittle cracks incorporate clasts of quartz, and a matrix of quartz, calcite and brownish, iron-rich clay minerals.



S2: Uninterpreted seismic sections in Sassenfjorden–Tempelfjorden (a and b) and Reindalspasset (c). See Error! Reference source not found.b for location.



S3: Field photograph of steeply east-dipping, partly overturned Lower Devonian dark sandstone near the bottom of the gully below the mine entrance.